



LAUREL ENVIRONMENTAL GEOSCIENCES, DPC

53 WEST HILLS ROAD • HUNTINGTON STATION, NEW YORK • 11746

PHONE: (631) 673-0612 • FAX: (631) 427-5323

WWW.LAURELENV.COM

January 9, 2023

**Weekly CAMP Reporting; 27-09 40th Avenue Site, Queens County, Long Island City, NY 11101
– Site Number C241241**

In accordance with the approved remedial action work plan for the above referenced site, a community air monitoring program (“CAMP”) is included with any intrusive activities to monitor for fugitive dust or volatile organic compounds (“VOCs”) generated by work at the Site. CAMP has been run during all work at the site, which began October 24, 2022. The approved work plan requires weekly reporting of CAMP data to the NYSDEC. This letter report covers the time period from January 2 through January 8, 2023. The CAMP action levels are set at 0.15 milligrams per cubic meter (“mg/m³”) above background for dust and 5 parts per million (“ppm”) for VOCs. The background readings during the week were ranging from approximately 0.024mg/m³ to 0.072mg/m³ for dust and 0.0ppm to 0.181ppm for VOCs.

Exceedances for dust levels were documented during this period, these exceedances were attributed to welding fumes when welding was being conducted in proximity of the CAMP DustTrak units. During the times of exceedances, no fugitive dust was observed, and no ground intrusive activities were being conducted. The highest dust levels were recorded on January 5 at 0.513 mg/m³, which occurred while welding was occurring near the CAMP unit.

No CAMP exceedances for VOCs were documented during this period. The highest PID readings were recorded on January 5 at 0.40 ppm.

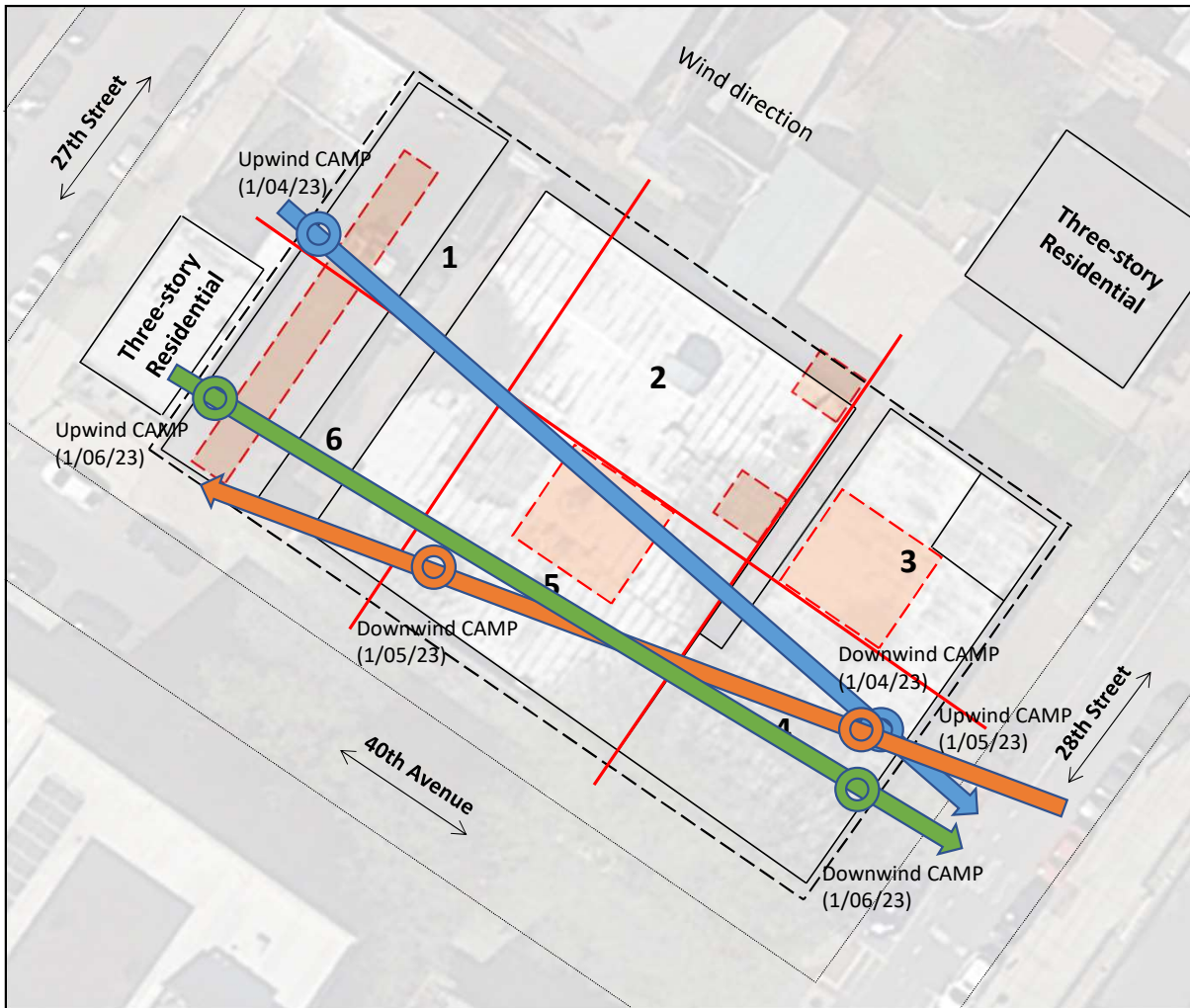
Graphs showing the 15-minute time weighted average (“TWA”) for CAMP conducted in the work zone and at the upwind perimeter have been attached to this letter report. A figure showing each monitoring location has also been attached.

Respectfully submitted,
Laurel Environmental Geosciences, DPC.

Jamie Burgher
Geologist III

ATTACHMENTS:

- 1: CAMP Locations
- 2: CAMP Dust graphs
- 3: CAMP PID graphs



KEY

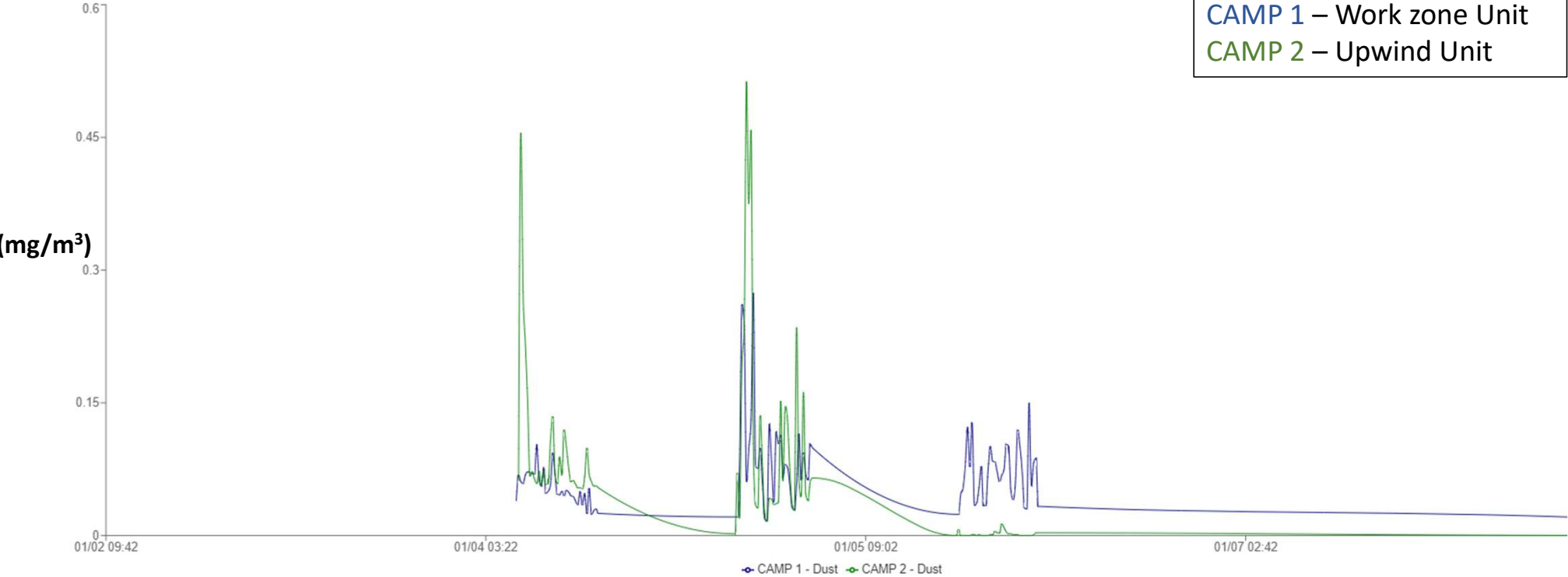
- Area of concern
- Quadrant boundary
- Site boundary

Wind Direction

- (1/04/23)
- (1/05/23)
- (1/06/23)

CAMP Dust Levels (15-minute time weighted average)

KEY:
CAMP 1 – Work zone Unit
CAMP 2 – Upwind Unit



CAMP PID Levels (15-minute time weighted average)

