	<h2 style="text-align: center;">Daily Activity Report</h2>					
	Newtown Creek Bud Site - North Block					
	2-10 54th Avenue, Long Island City, New York BCP No. C241248					
<h3 style="text-align: center;">General Site Information</h3>						
Date:	Monday, October 3, 2022					
Weather:	Overcast, Rain 48-58 °F					
Wind Direction/Speed:	N @ 15-21 mph					
AKRF Personnel on Site:	Hank Westly					
AKRF Equipment on Site:	Mini RAE 3000 Photoionization Detector [(PID) x1], TSI Sidepak Aerosol Monitor, CAMP - 10.6 electron Volt (eV) Mini RAE 3000 PID x 2 and TSI 8530 DustTrak II x 2.					
	None.					
<h3 style="text-align: center;">Contractor Information</h3>						
Contracting Company		Main Personnel			Equipment	
Bud North GC LLC		Chris Steinmann			None.	
Civetta Cousins JV (Civetta)		Eric Weiberth			Payloader, Track loader, Excavator (x6), Mobile Crane	
<h3 style="text-align: center;">Description and Location of Work Activities Performed</h3>						
Civetta continued installing pile cap forms, cutting piles to final elevation, and installing waterproofing and rebar. Excavation took place in grid WC-03 for concrete form installation.						
Seven loads of soil from grid WC-03 (0-2'), (2-3.5') were exported to Bayshore facility in Keasby, NJ. One load of soil from grid WC-17 (0-3.5') was exported to Clean Earth Carteret. The landscpaing contractor imported one load of general fill from IRRC.						
<h3 style="text-align: center;">Site Soil Disposal Tracking Information</h3>						
Destination Facility	Daily Trucks	Total Trucks	Daily Approx. Cubic Yds	Total Approx. Cubic Yds	Total Site Loads	Total Approximate Cubic Yards
Clean Earth Carteret	1	54	20	1,080	817	16,340
Clean Earth North Jersey	0	177	0	3,540		
Bayshore Management LLC	7	586	140	11,720		
ACUA	-	-	0	0		
-	-	-	0	0		
Total	0	817	160	16,340	817	16,340
<h3 style="text-align: center;">CAMP Air Monitoring Results</h3>						
CAMP Station	UPWIND			DOWNWIND		
Odors:	None.			None.		
VOC Action Level Exceedance(s):	None.			None.		
Particulate Action Level Exceedance(s):	None.			None.		
Maximum VOC Level (ppm):	1.0147			0.4352		
Maximum Particulate Level (mg/m³):	0.0600			0.0610		
Notes: Air monitoring was not conducted from 9:00-15:30 due to rain.						
<h3 style="text-align: center;">Additional Information</h3>						
Planned Work Activity for Following Day/Week:	Continue off-site disposal of soil and concrete debris, excavation, installation of SSDS. Continue with import of clean backfill and 3/4" stone.					
Comments:						

Site Map



LEGEND

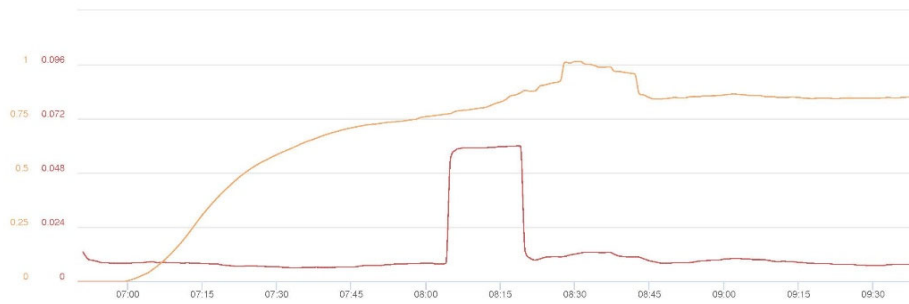
- BCP SITE BOUNDARY
- WASTE CLASS GRID
- REMEDIAL EXCAVATION TO 2 FEET BELOW GROUNDWATER (APPROX. 50 FEET BY 75 FEET, UP TO 11 FEET DEEP) FOR REMOVAL OF SOURCE MATERIAL
- REMEDIAL EXCAVATION TO APPROXIMATELY 2 FEET BELOW EXISTING GRADE
- BOTTOM DOCUMENTATION SAMPLE SOURCE AREA REMOVAL
- SIDEWALL DOCUMENTATION SAMPLE SOURCE AREA REMOVAL
- CONFIRMATORY DOCUMENTATION SAMPLE LOCATION



Map Source:
NYCDDP (NYC Dept. of City Planning) GIS data

Upwind CAMP Station Data

Mon, 3rd of Oct 2022, 0:00:00 – 17:59:22
(GMT-05:00) Eastern Time (US & Canada)



Mass Conc. Total mg/m³ AVG 15m

DustTrak-8530

RS222(G)

MIN	AVG	MAX
0.006	0.013	0.06

VOC ppm AVG 15m ppm

miniRAE 3000

RS222(G)

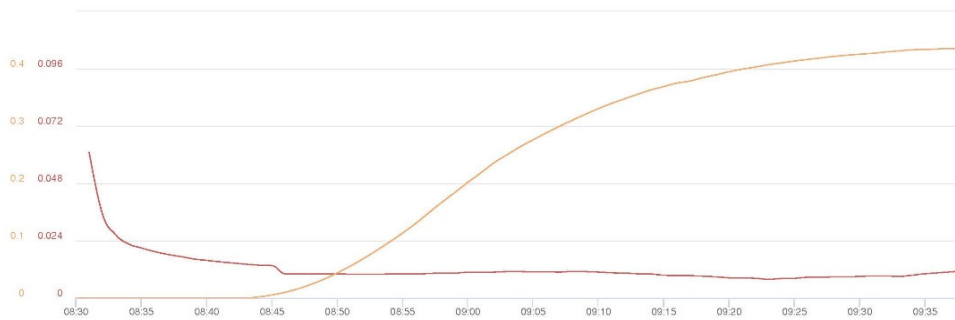
MIN	AVG	MAX
0	0.6798	1.0147

© Netronix 2022

Name Bud Site UPWIND
(FA04921)
S/N 0B266651
Description (FA04921)
Location 52-37 2nd St, Queens,
NY 11101, USA

Downwind CAMP Station Data

Mon, 3rd of Oct 2022, 0:00:00 – 17:58:30
(GMT-05:00) Eastern Time (US & Canada)



Mass Conc. Total mg/m³ AVG 15m

DustTrak-8530

RS222(G)

MIN	AVG	MAX
0.0079	0.0125	0.061

VOC ppm AVG 15m ppm

miniRAE 3000

RS222(G)

MIN	AVG	MAX
0	0.2212	0.4362

© Netronix 2022

Name Bud Site MID (FA04057)
S/N 0B446167
Description FA04057
Location 2 55th Ave, Long Island
City, NY 11101, USA

Site Photographs

Photograph 1 -
Export of soil from
Grid WC-17, view
facing east.




Photograph 2 -
Excavation of soil
from Grid WC-03,
view facing west.



Photograph 3 - Mud
slab poured in WC-
15.



	Daily Activity Report					
	Newtown Creek Bud Site - North Block					
	2-10 54th Avenue, Long Island City, New York					
	BCP No. C241248					
General Site Information						
Date:	Tuesday, October 4, 2022					
Weather:	Rain 47-54 °F					
Wind Direction/Speed:	N @ 10 mph					
AKRF Personnel on Site:	Hank Westly					
AKRF Equipment on Site:	Mini RAE 3000 Photoionization Detector [(PID) x1], TSI Sidepak Aerosol Monitor, CAMP - 10.6 electron Volt (eV) Mini RAE 3000 PID x 2 and TSI 8530 DustTrak II x 2.					
	None.					
Contractor Information						
Contracting Company	Main Personnel			Equipment		
Bud North GC LLC	Chris Steinmann			None.		
Civetta Cousins JV (Civetta)	Eric Weiberth			Payloader, Track loader, Excavator (x6), Mobile Crane		
Description and Location of Work Activities Performed						
Civetta continued installing pile cap forms, cutting piles to final elevation, and installing waterproofing and rebar.						
Excavation took place in grid WC-03 to assist concrete form installation. The soil was stockpiled in the same grid. The landscaping crew prepped an area outside the site fence for a future crane pad.						
Site Soil Disposal Tracking Information						
Destination Facility	Daily Trucks	Total Trucks	Daily Approx. Cubic Yds	Total Approx. Cubic Yds	Total Site Loads	Total Approximate Cubic Yards
Clean Earth Carteret	0	54	0	1,080	817	16,340
Clean Earth North Jersey	0	177	0	3,540		
Bayshore Management LLC	0	586	0	11,720		
ACUA	-	-	0	0		
-	-	-	0	0		
Total	0	817	0	16,340	817	16,340
CAMP Air Monitoring Results						
CAMP Station	UPWIND			DOWNWIND		
Odors:	None.			None.		
VOC Action Level Exceedance(s):	None.			None.		
Particulate Action Level Exceedance(s):	None.			None.		
Maximum VOC Level (ppm):	None.			None.		
Maximum Particulate Level (mg/m³):	None.			None.		
Notes: Air monitoring was not conducted due to rain.						
Additional Information						
Planned Work Activity for Following Day/Week:	Continue off-site disposal of soil and concrete debris, excavation, installation of SSDS. Continue with import of clean backfill and 3/4" stone.					
Comments:						

Site Map



LEGEND

- BCP SITE BOUNDARY
- WASTE CLASS GRID
- REMEDIAL EXCAVATION TO 2 FEET BELOW GROUNDWATER (APPROX. 50 FEET BY 75 FEET, UP TO 11 FEET DEEP) FOR REMOVAL OF SOURCE MATERIAL
- REMEDIAL EXCAVATION TO APPROXIMATELY 2 FEET BELOW EXISTING GRADE
- BOTTOM DOCUMENTATION SAMPLE SOURCE AREA REMOVAL
- SIDEWALL DOCUMENTATION SAMPLE SOURCE AREA REMOVAL
- CONFIMATORY DOCUMENTATION SAMPLE LOCATION



Map Source:
NYCDOCP (NYC Dept. of City Planning) GIS data

Upwind CAMP Station Data

N/A

Downwind CAMP Station Data

N/A

Site Photographs

Photograph 1 -
Civetta pulling out
sheets of metal in
WC-01, view facing
northwest.




Photograph 2 - Soil
stockpiled for
excavation on 10/5,
view facing west.



Photograph 3 - The
landscaping crew
breaks up the
sidewalk to prep for
a crane pad
installation.



	Daily Activity Report					
	Newtown Creek Bud Site - North Block					
	2-10 54th Avenue, Long Island City, New York					
	BCP No. C241248					
General Site Information						
Date:	Wednesday, October 5, 2022					
Weather:	Overcast, Rain 59 °F					
Wind Direction/Speed:	N @ 10 mph					
AKRF Personnel on Site:	Hank Westly					
AKRF Equipment on Site:	Mini RAE 3000 Photoionization Detector [(PID) x1], TSI Sidepak Aerosol Monitor, CAMP - 10.6 electron Volt (eV) Mini RAE 3000 PID x 2 and TSI 8530 DustTrak II x 2.					
	None.					
Contractor Information						
Contracting Company	Main Personnel			Equipment		
Bud North GC LLC	Chris Steinmann			None.		
Civetta Cousins JV (Civetta)	Eric Weiberth			Payloader, Track loader, Excavator (x6)		
Description and Location of Work Activities Performed						
Civetta continued installing pile cap forms, cutting piles to final elevation, and installing waterproofing and rebar.						
Excavation took place in grid WC-03 to assist concrete form installation. Six loads of soil were exported from WC-03 (0-3.5) to Bayshore, and three loads from WC-01 (3.5-7) were exported to Clean Earth of Carteret. The landscaping crew prepped an area outside the site fence for a future crane pad.						
Site Soil Disposal Tracking Information						
Destination Facility	Daily Trucks	Total Trucks	Daily Approx. Cubic Yds	Total Approx. Cubic Yds	Total Site Loads	Total Approximate Cubic Yards
Clean Earth Carteret	3	57	60	1,140	826	16,520
Clean Earth North Jersey	0	177	0	3,540		
Bayshore Management LLC	6	592	120	11,840		
ACUA	-	-	0	0		
-	-	-	0	0		
Total	9	826	180	16,520	826	16,520
CAMP Air Monitoring Results						
CAMP Station	UPWIND			DOWNWIND		
Odors:	None.			None.		
VOC Action Level Exceedance(s):	None.			None.		
Particulate Action Level Exceedance(s):	None.			None.		
Maximum VOC Level (ppm):	3.689			1.3313		
Maximum Particulate Level (mg/m³):	0.0901			0.0333		
Notes: Air monitoring was not conducted from 8:30-11:30 due to rain.						
Additional Information						
Planned Work Activity for Following Day/Week:	Continue off-site disposal of soil and concrete debris, excavation, installation of SSDS. Continue with import of clean backfill and 3/4" stone.					
Comments:						

Site Map



LEGEND

- BCP SITE BOUNDARY
- WASTE CLASS GRID
- REMEDIAL EXCAVATION TO 2 FEET BELOW GROUNDWATER (APPROX. 50 FEET BY 75 FEET, UP TO 11 FEET DEEP) FOR REMOVAL OF SOURCE MATERIAL
- REMEDIAL EXCAVATION TO APPROXIMATELY 2 FEET BELOW EXISTING GRADE
- BOTTOM DOCUMENTATION SAMPLE SOURCE AREA REMOVAL
- SIDEWALL DOCUMENTATION SAMPLE SOURCE AREA REMOVAL
- CONFIMATORY DOCUMENTATION SAMPLE LOCATION



Map Source:
NYCDOCP (NYC Dept. of City Planning) GIS data

Upwind CAMP Station Data

Wed, 5th of Oct 2022, 0:00:00 – 19:32:33
(GMT-05:00) Eastern Time (US & Canada)



Mass Conc. Total mg/m³ AVG 15m
mg/m³
DustTrak-8530
RS232C(S)

MIN	AVG	MAX
0.0057	0.0119	0.0901

VOC ppm AVG 15m ppm
miniRAE 3000
RS232C(S)

MIN	AVG	MAX
0.071	2.1724	3.689

Name Bud Site UPWIND (FA04921)
S/N 0B266651
Description (FA04921)
Location 202 54th Ave, Long Island City, NY 11101, USA

© Netronix 2022

Downwind CAMP Station Data

Wed, 5th of Oct 2022, 0:00:00 – 19:34:29
(GMT-05:00) Eastern Time (US & Canada)



Mass Conc. Total mg/m³ AVG 15m
mg/m³
DustTrak-8530
RS232C(S)

MIN	AVG	MAX
0.0011	0.0078	0.0333

VOC ppm AVG 15m ppm
miniRAE 3000
RS232C(S)

MIN	AVG	MAX
0	0.8419	1.3313

Name Bud Site MID (FA04057)
S/N 0B446167
Description FA04057
Location 2 55th Ave, Long Island City, NY 11101, USA

© Netronix 2022

Site Photographs

Photograph 1 -
Exporting soil in WC-
03, view facing west.




Photograph 2 -
Landscaping crew
excavates for
installation of sewer
system, view facing
northeast.



Photograph 3 - The
landscaping crew
breaks up the
sidewalk to prep for
a crane pad
installation.



	Daily Activity Report					
	Newtown Creek Bud Site - North Block					
	2-10 54th Avenue, Long Island City, New York					
	BCP No. C241248					
General Site Information						
Date:	Thursday, October 6, 2022					
Weather:	Clear 55-73 °F					
Wind Direction/Speed:	NW @ 3 mph					
AKRF Personnel on Site:	Hank Westly					
AKRF Equipment on Site:	Mini RAE 3000 Photoionization Detector [(PID) x1], TSI Sidepak Aerosol Monitor, CAMP - 10.6 electron Volt (eV) Mini RAE 3000 PID x 2 and TSI 8530 DustTrak II x 2.					
	None.					
Contractor Information						
Contracting Company	Main Personnel			Equipment		
Bud North GC LLC	Chris Steinmann			None.		
Civetta Cousins JV (Civetta)	Eric Weiberth			Payloader, Track loader, Excavator (x6)		
Description and Location of Work Activities Performed						
Civetta continued installing pile cap forms, cutting piles to final elevation, pouring concrete, and installing waterproofing and rebar.						
Excavation took place in grid WC-03 to assist concrete form installation. Civetta exported one truckload of C+D. The landscaping crew prepped an area outside the site fence for a future crane pad, and installed the sewer system in WC-25. The landscpaing contractor imported two loads of 1.5" stone from Callahan.						
Site Soil Disposal Tracking Information						
Destination Facility	Daily Trucks	Total Trucks	Daily Approx. Cubic Yds	Total Approx. Cubic Yds	Total Site Loads	Total Approximate Cubic Yards
Clean Earth Carteret	0	57	0	1,140	826	16,520
Clean Earth North Jersey	0	177	0	3,540		
Bayshore Management LLC	0	592	0	11,840		
ACUA	-	-	0	0		
-	-	-	0	0		
Total	0	826	0	16,520	826	16,520
CAMP Air Monitoring Results						
CAMP Station	UPWIND			DOWNWIND		
Odors:	None.			None.		
VOC Action Level Exceedance(s):	None.			None.		
Particulate Action Level Exceedance(s):	None.			None.		
Maximum VOC Level (ppm):	0.9023			0.2229		
Maximum Particulate Level (mg/m³):	0.029			0.0158		
Notes: None.						
Additional Information						
Planned Work Activity for Following Day/Week:	Continue off-site disposal of soil and concrete debris, excavation, installation of SSDS. Continue with import of clean backfill and 3/4" stone.					
Comments:						

Site Map



LEGEND

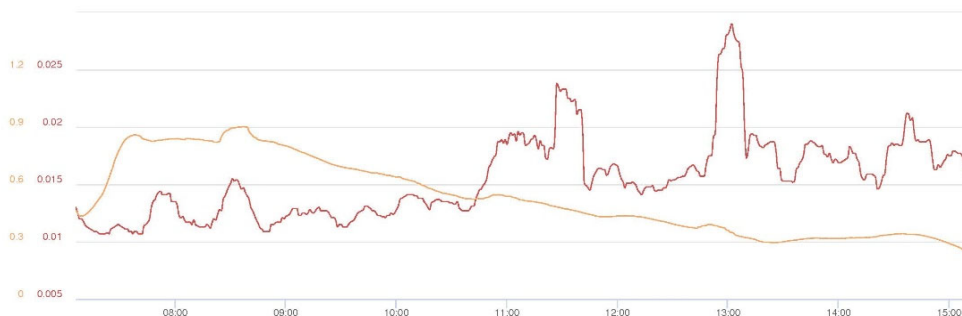
- BCP SITE BOUNDARY
- WASTE CLASS GRID
- REMEDIAL EXCAVATION TO 2 FEET BELOW GROUNDWATER (APPROX. 50 FEET BY 75 FEET, UP TO 11 FEET DEEP) FOR REMOVAL OF SOURCE MATERIAL
- REMEDIAL EXCAVATION TO APPROXIMATELY 2 FEET BELOW EXISTING GRADE
- BOTTOM DOCUMENTATION SAMPLE SOURCE AREA REMOVAL
- SIDEWALL DOCUMENTATION SAMPLE SOURCE AREA REMOVAL
- CONFIMATORY DOCUMENTATION SAMPLE LOCATION



Map Source:
NYCDOCP (NYC Dept. of City Planning) GIS data

Upwind CAMP Station Data

Thu, 6th of Oct 2022, 0:00:00 – 17:38:09
(GMT-05:00) Eastern Time (US & Canada)



Mass Conc. Total mg/m³ AVG 15m
mg/m³
DustTrak-8530
RS232(G)

MIN	AVG	MAX
0.0107	0.0155	0.029

VOC ppm AVG 15m ppm
miniRAE 3000
RS232(A)

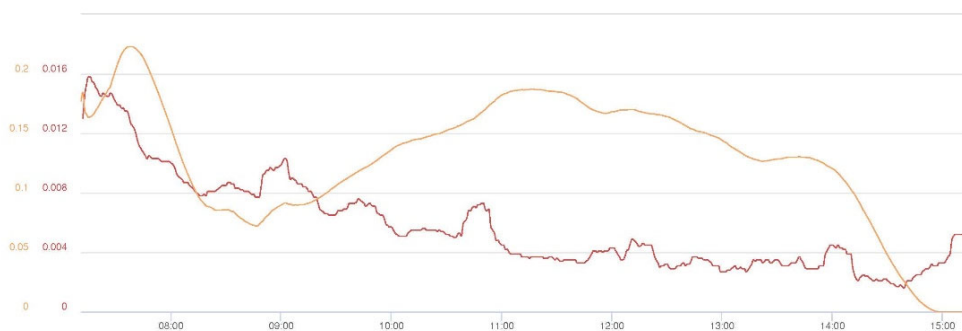
MIN	AVG	MAX
0.2431	0.5341	0.9023

Name Bud Site UPWIND (FA04921)
S/N 0B266651
Description (FA04921)
Location 202 54th Ave, Long Island City, NY 11101, USA

© Netronix 2022

Downwind CAMP Station Data

Thu, 6th of Oct 2022, 0:00:00 – 17:39:55
(GMT-05:00) Eastern Time (US & Canada)



Mass Conc. Total mg/m³ AVG 15m
mg/m³
DustTrak-8530
RS232(G)

MIN	AVG	MAX
0.0016	0.0058	0.0158

VOC ppm AVG 15m ppm
miniRAE 3000
RS232(A)

MIN	AVG	MAX
0	0	0.2229

Name Bud Site MID (FA04057)
S/N 0B446167
Description FA04057
Location 2 55th Ave, Long Island City, NY 11101, USA

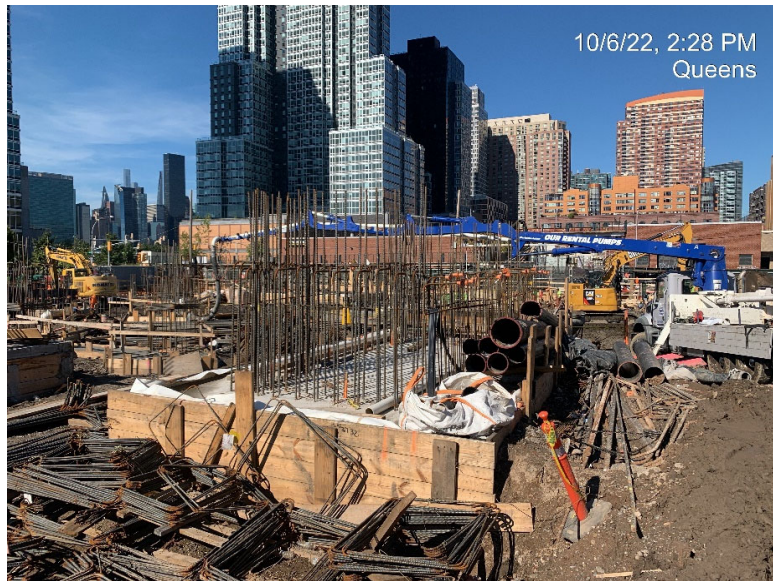
© Netronix 2022

Site Photographs

Photograph 1 -
Stockpiled soil from
pile cap form
installation, view
facing south.




Photograph 2 -
Pouring pile caps in
WC-02. view facing
northwest.



Photograph 3 -
Sewer sytem
installation, view
facing southeast.



	Daily Activity Report					
	Newtown Creek Bud Site - North Block					
	2-10 54th Avenue, Long Island City, New York					
	BCP No. C241248					
General Site Information						
Date:	Friday, October 7, 2022					
Weather:	Clear 55-73 °F					
Wind Direction/Speed:	S @ 3 mph					
AKRF Personnel on Site:	Hank Westly					
AKRF Equipment on Site:	Mini RAE 3000 Photoionization Detector [(PID) x1], TSI Sidepak Aerosol Monitor, CAMP - 10.6 electron Volt (eV) Mini RAE 3000 PID x 2 and TSI 8530 DustTrak II x 2.					
	None.					
Contractor Information						
Contracting Company	Main Personnel			Equipment		
Bud North GC LLC	Chris Steinmann			None.		
Civetta Cousins JV (Civetta)	Eric Weiberth			Payloader, Track loader, Excavator (x6)		
Description and Location of Work Activities Performed						
Civetta continued installing pile cap forms, cutting piles to final elevation, pouring concrete, and installing waterproofing and rebar.						
Excavation took place in grid WC-03 to assist concrete form installation. Civetta exported three truckloads of soi to Clean Earth of Carteret, and imported six loads of fill from IRRC. The landscaping crew prepped an area outside the site fence for a future crane pad, and installed the sewer system in WC-25. The landscpaing contractor imported two loads of fill stone from IRRC and one load of 2"-4" stone from Callahan.						
Site Soil Disposal Tracking Information						
Destination Facility	Daily Trucks	Total Trucks	Daily Approx. Cubic Yds	Total Approx. Cubic Yds	Total Site Loads	Total Approximate Cubic Yards
Clean Earth Carteret	3	60	60	1,200	829	16,580
Clean Earth North Jersey	0	177	0	3,540		
Bayshore Management LLC	0	592	0	11,840		
ACUA	-	-	0	0		
-	-	-	0	0		
Total	0	829	60	16,580	829	16,580
CAMP Air Monitoring Results						
CAMP Station	UPWIND			DOWNWIND		
Odors:	None.			None.		
VOC Action Level Exceedance(s):	None.			None.		
Particulate Action Level Exceedance(s):	None.			None.		
Maximum VOC Level (ppm):	0.4819			ND		
Maximum Particulate Level (mg/m³):	0.0328			0.1245		
Additional Information						
Planned Work Activity for Following Day/Week:	Continue off-site disposal of soil and concrete debris, excavation, installation of SSDS. Continue with import of clean backfill and 3/4" stone.					
Comments:						

Site Map



LEGEND

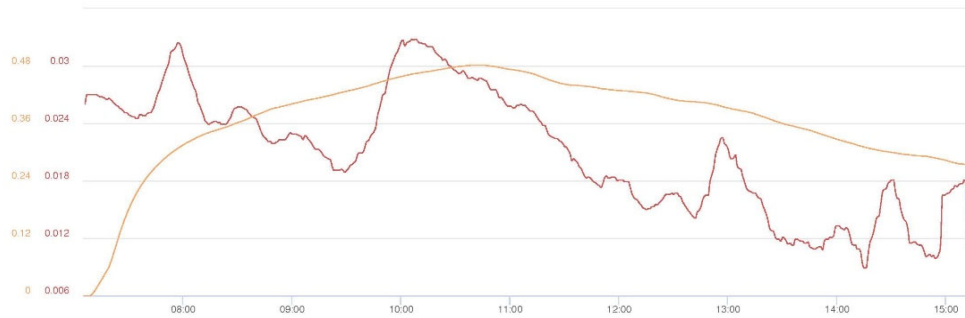
- BCP SITE BOUNDARY
- WASTE CLASS GRID
- REMEDIAL EXCAVATION TO 2 FEET BELOW GROUNDWATER (APPROX. 50 FEET BY 75 FEET, UP TO 11 FEET DEEP) FOR REMOVAL OF SOURCE MATERIAL
- REMEDIAL EXCAVATION TO APPROXIMATELY 2 FEET BELOW EXISTING GRADE
- BOTTOM DOCUMENTATION SAMPLE SOURCE AREA REMOVAL
- SIDEWALL DOCUMENTATION SAMPLE SOURCE AREA REMOVAL
- CONFIMATORY DOCUMENTATION SAMPLE LOCATION



Map Source:
NYCDOCP (NYC Dept. of City Planning) GIS data

Upwind CAMP Station Data

Fri, 7th of Oct 2022, 0:00:00 – 18:21:45
(GMT-05:00) Eastern Time (US & Canada)



Mass Conc. Total mg/m³ AVG 15m

mg/m³
DustTrak-8530
#52322(G)

MIN	AVG	MAX
0.0089	0.021	0.0328

VOC ppm AVG 15m ppm

miniRAE 3000
#52322(G)

MIN	AVG	MAX
0	0.3686	0.4819

© Netronix 2022

Name Bud Site MID (FA04057)
S/N 0B446167
Description FA04057
Location 2 55th Ave, Long Island
City, NY 11101, USA

Downwind CAMP Station Data



VOC ppm AVG 15m ppm
miniRAE 3000
#52322(G)

MIN	AVG	MAX
0.0123	0.0322	0.1245

Mass Conc. Total mg/m³ AVG 15m
mg/m³
DustTrak-8530
#52322(G)

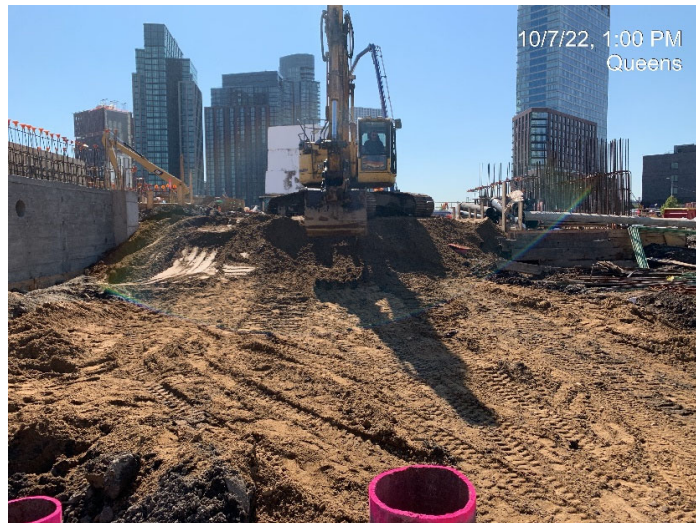
MIN	AVG	MAX
0.0123	0.0322	0.1245

Site Photographs

Photograph 1 -
Export of soil to CEC
in WC-03, view
facing north.




Photograph 2 -
Regradded
imported fill in WC-
03, view facing
south.



Photograph 3 -
Sewer sytem
installation, view
facing east.



		<h2 style="text-align: center;">Daily Activity Report</h2>					
		Newtown Creek Bud Site - North Block					
		2-10 54th Avenue, Long Island City, New York					
		BCP No. C241248					
<h3 style="text-align: center;">General Site Information</h3>							
Date:		Tuesday, October 11, 2022					
Weather:		Clear 55-73 °F					
Wind Direction/Speed:		NW @ 6 mph					
AKRF Personnel on Site:		Hank Westly					
AKRF Equipment on Site:		Mini RAE 3000 Photoionization Detector [(PID) x1], TSI Sidepak Aerosol Monitor, CAMP - 10.6 electron Volt (eV) Mini RAE 3000 PID x 2 and TSI 8530 DustTrak II x 2.					
		None.					
<h3 style="text-align: center;">Contractor Information</h3>							
Contracting Company		Main Personnel			Equipment		
Bud North GC LLC		Chris Steinmann			None.		
Civetta Cousins JV (Civetta)		Eric Weiberth			Payloader, Track loader, Excavator (x6)		
<h3 style="text-align: center;">Description and Location of Work Activities Performed</h3>							
The site was inactive on 10/10/2022 due to holiday. Therefore, no daily report was prepared. Civetta continued installing pile cap forms, cutting piles to final elevation, pouring concrete, and installing waterproofing and rebar.							
Excavation took place in grid WC-03 to assist concrete form installation. Civetta exported four truckloads of soil to Bayshore from WC-25, and imported 12 loads of approved fill from IRRC, and two loads of 1.5" stone. The landscaping crew prepped an area outside the site fence for a future crane pad, and installed the sewer system in WC-25. The landscpaing contractor imported one load of 1.5" stone from Callahan and exported one load of soil from WC-25 to Bayshore.							
<h3 style="text-align: center;">Site Soil Disposal Tracking Information</h3>							
Destination Facility	Daily Trucks	Total Trucks	Daily Approx. Cubic Yds	Total Approx. Cubic Yds	Total Site Loads	Total Approximate Cubic Yards	
Clean Earth Carteret	0	60	0	1,200	834	16,680	
Clean Earth North Jersey	0	177	0	3,540			
Bayshore Management LLC	5	597	100	11,940			
ACUA	-	-	0	0			
-	-	-	0	0			
Total	0	834	100	16,680	834	16,680	
<h3 style="text-align: center;">CAMP Air Monitoring Results</h3>							
CAMP Station	UPWIND			DOWNWIND			
Odors:	None.			None.			
VOC Action Level Exceedance(s):	None.			None.			
Particulate Action Level Exceedance(s):	None.			None.			
Maximum VOC Level (ppm):	0.8211			0.5507			
Maximum Particulate Level (mg/m³):	0.0418			0.0888			
<h3 style="text-align: center;">Additional Information</h3>							
Planned Work Activity for Following Day/Week:	Continue off-site disposal of soil and concrete debris, excavation, installation of SSDS. Continue with import of clean backfill and 3/4" stone.						
Comments:							

Site Map



LEGEND

- BCP SITE BOUNDARY
- WASTE CLASS GRID
- REMEDIAL EXCAVATION TO 2 FEET BELOW GROUNDWATER (APPROX. 50 FEET BY 75 FEET, UP TO 11 FEET DEEP) FOR REMOVAL OF SOURCE MATERIAL
- REMEDIAL EXCAVATION TO APPROXIMATELY 2 FEET BELOW EXISTING GRADE
- BOTTOM DOCUMENTATION SAMPLE SOURCE AREA REMOVAL
- SIDEWALL DOCUMENTATION SAMPLE SOURCE AREA REMOVAL
- CONFIRMATORY DOCUMENTATION SAMPLE LOCATION



Map Source:
NYC DCP (NYC Dept. of City Planning) GIS data

Upwind CAMP Station Data

Tue, 11th of Oct 2022, 0:00:00 – 17:59:49
(GMT-05:00) Eastern Time (US & Canada)



Mass Conc. Total mg/m³ AVG 15m

DustTrak 8530
R5232(%)

MIN	AVG	MAX
0.0217	0.0289	0.0418

VOC ppm AVG 15m ppm

miniRAE 3000
R5232(%)

MIN	AVG	MAX
0.1465	0.4759	0.8211

Name Bud Site UPWIND
(FA04921)
S/N 0B266651
Description (FA04921)
Location 202 54th Ave, Long
Island City, NY 11101,
USA

© Netronix 2022

Downwind CAMP Station Data

Tue, 11th of Oct 2022, 0:00:00 – 18:00:56
(GMT-05:00) Eastern Time (US & Canada)



Mass Conc. Total mg/m³ AVG 15m

DustTrak 8530
R5232(%)

MIN	AVG	MAX
0.013	0.029	0.0888

VOC ppm AVG 15m ppm

miniRAE 3000
R5232(%)

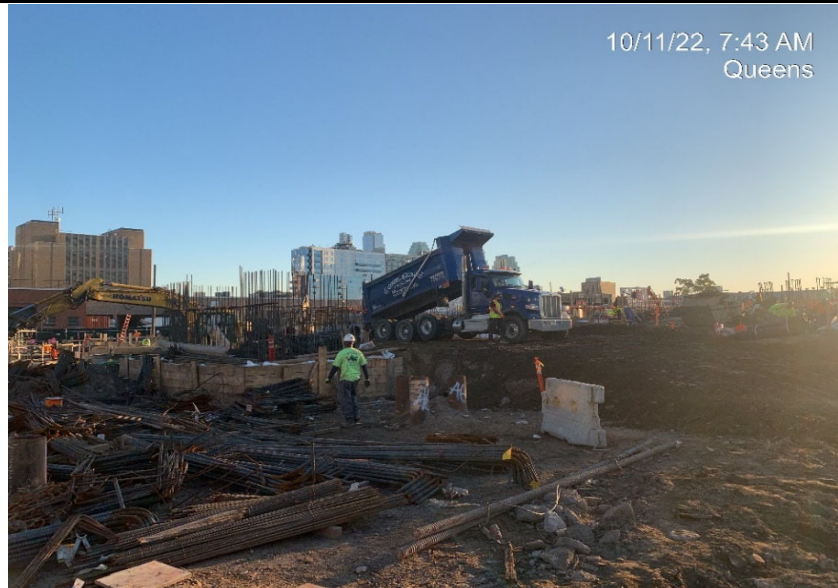
MIN	AVG	MAX
0.141	0.4208	0.5507

Name Bud Site MID (FA04057)
S/N 0B446167
Description FA04057
Location 2 55th Ave, Long Island
City, NY 11101, USA

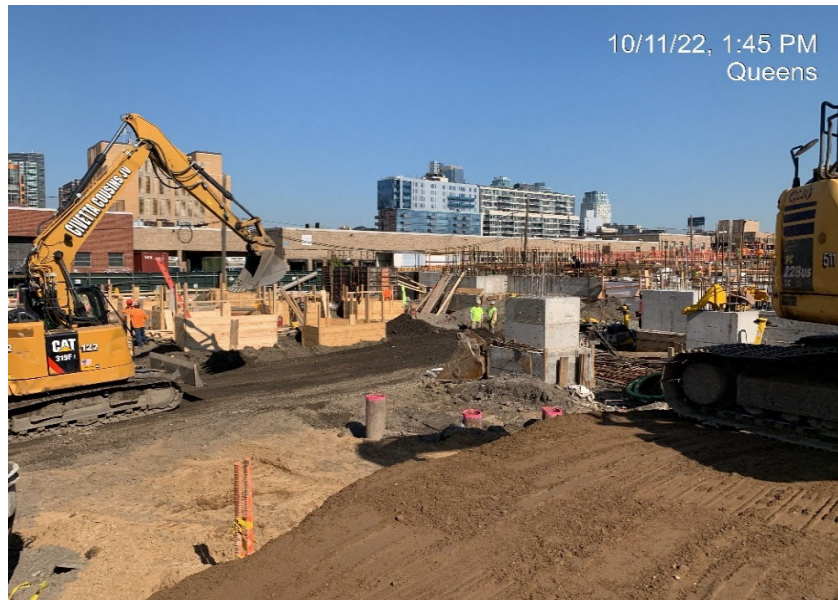
© Netronix 2022

Site Photographs

Photograph 1 -
Import of soil to WC-
3, view facing
northeast.




Photograph 2 - Pile
cap form
installation in WC-4,
view facing
northeast.



Photograph 3 -
Rebar installation in
WC-13, and WC-14.



	Daily Activity Report					
	Newtown Creek Bud Site - North Block					
	2-10 54th Avenue, Long Island City, New York					
	BCP No. C241248					
General Site Information						
Date:	Wednesday, October 12, 2022					
Weather:	Clear 55-73 °F					
Wind Direction/Speed:	SW @ 8 mph					
AKRF Personnel on Site:	Hank Westly					
AKRF Equipment on Site:	Mini RAE 3000 Photoionization Detector [(PID) x1], TSI Sidepak Aerosol Monitor, CAMP - 10.6 electron Volt (eV) Mini RAE 3000 PID x 2 and TSI 8530 DustTrak II x 2.					
	None.					
Contractor Information						
Contracting Company	Main Personnel			Equipment		
Bud North GC LLC	Chris Steinmann			None.		
Civetta Cousins JV (Civetta)	Eric Weiberth			Payloader, Track loader, Excavator (x6)		
Description and Location of Work Activities Performed						
Civetta continued installing pile cap forms, cutting piles to final elevation, pouring concrete, and installing waterproofing and rebar.						
Excavation took place in grid WC-03 and WC-01 to assist concrete form installation. The landscpaing contractor graded in grids WC-24, and WC-25.						
Site Soil Disposal Tracking Information						
Destination Facility	Daily Trucks	Total Trucks	Daily Approx. Cubic Yds	Total Approx. Cubic Yds	Total Site Loads	Total Approximate Cubic Yards
Clean Earth Carteret	0	60	0	1,200	834	16,680
Clean Earth North Jersey	0	177	0	3,540		
Bayshore Management LLC	0	597	0	11,940		
ACUA	-	-	0	0		
-	-	-	0	0		
Total	0	834	0	16,680	834	16,680
CAMP Air Monitoring Results						
CAMP Station	UPWIND			DOWNWIND		
Odors:	None.			None.		
VOC Action Level Exceedance(s):	None.			None.		
Particulate Action Level Exceedance(s):	None.			None.		
Maximum VOC Level (ppm):	0.4681			0.3129		
Maximum Particulate Level (mg/m³):	0.0829			0.0383		
Additional Information						
Planned Work Activity for Following Day/Week:	Continue off-site disposal of soil and concrete debris, excavation, installation of SSDS. Continue with import of clean backfill and 3/4" stone.					
Comments:						

Site Map



LEGEND

- BCP SITE BOUNDARY
- WASTE CLASS GRID
- REMEDIAL EXCAVATION TO 2 FEET BELOW GROUNDWATER (APPROX. 50 FEET BY 75 FEET, UP TO 11 FEET DEEP) FOR REMOVAL OF SOURCE MATERIAL
- REMEDIAL EXCAVATION TO APPROXIMATELY 2 FEET BELOW EXISTING GRADE
- BOTTOM DOCUMENTATION SAMPLE SOURCE AREA REMOVAL
- SIDEWALL DOCUMENTATION SAMPLE SOURCE AREA REMOVAL
- CONFIMATORY DOCUMENTATION SAMPLE LOCATION



Map Source:
NYCDOCP (NYC Dept. of City Planning) GIS data

Upwind CAMP Station Data

Wed, 12th of Oct 2022, 6:54:00 – 17:52:00
(GMT-05:00) Eastern Time (US & Canada)



© Netronix 2022

Name Bud Site MID (FA04057)
S/N 0B446167
Description FA04057
Location 2 55th Ave, Long Island
City, NY 11101, USA

Downwind CAMP Station Data

Wed, 12th of Oct 2022, 0:00:00 – 17:55:22
(GMT-05:00) Eastern Time (US & Canada)



© Netronix 2022

Name Bud DOWNWIND
(FA3254)
S/N 0B312021
Description FA03254
Location 202 54th Ave, Long
Island City, NY 11101,
USA

Site Photographs

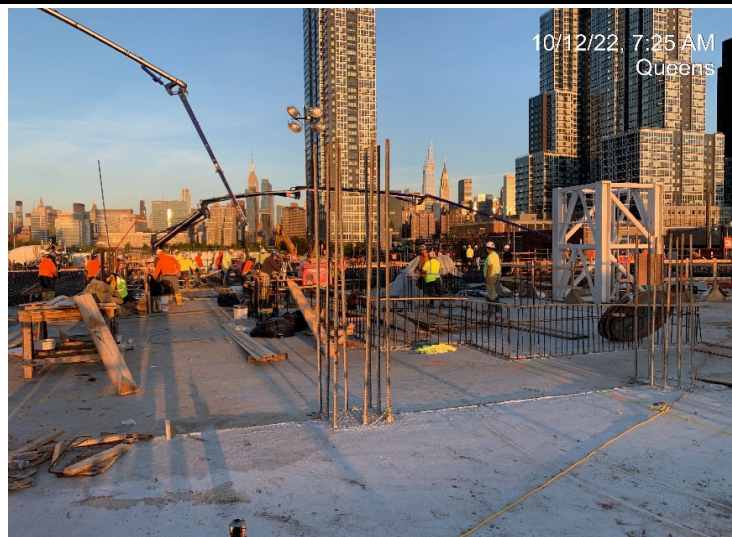
Photograph 1 -
Import of soil to WC-
3, view facing
northeast.




Photograph 2 - Pile
cap form
installation in WC-4,
view facing
northeast.



Photograph 3 - Slab
pouring in WC-15,
WC-14, WC-07, and
WC-06. View facing
northwest.



	<h2 style="text-align: center;">Daily Activity Report</h2>					
	Newtown Creek Bud Site - North Block					
	2-10 54th Avenue, Long Island City, New York					
	BCP No. C241248					
<h3 style="text-align: center;">General Site Information</h3>						
Date:	Thursday, October 13, 2022					
Weather:	Partly Cloudy, Rain 55-73 °F					
Wind Direction/Speed:	SW @ 8 mph					
AKRF Personnel on Site:	Hank Westly					
AKRF Equipment on Site:	Mini RAE 3000 Photoionization Detector [(PID) x1], TSI Sidepak Aerosol Monitor, CAMP - 10.6 electron Volt (eV) Mini RAE 3000 PID x 2 and TSI 8530 DustTrak II x 2.					
	None.					
<h3 style="text-align: center;">Contractor Information</h3>						
Contracting Company	Main Personnel		Equipment			
Bud North GC LLC	Chris Steinmann		None.			
Civetta Cousins JV (Civetta)	Eric Weiberth		Payloader, Track loader, Excavator (x6)			
<h3 style="text-align: center;">Description and Location of Work Activities Performed</h3>						
Civetta continued installing pile cap forms, cutting piles to final elevation, pouring concrete, and installing waterproofing and rebar. Excavation took place in grid WC-03 and WC-01 to assist concrete form installation. The soil was regraded on site.						
The landscpaing contractor graded and installed foam foundation elements in grids WC-24, and WC-25. The landscpaing contractor exported six loads of soil from WC-24, and WC-25 to Bayshore Management LLC.						
<h3 style="text-align: center;">Site Soil Disposal Tracking Information</h3>						
Destination Facility	Daily Trucks	Total Trucks	Daily Approx. Cubic Yds	Total Approx. Cubic Yds	Total Site Loads	Total Approximate Cubic Yards
Clean Earth Carteret	0	60	0	1,200	840	16,800
Clean Earth North Jersey	0	177	0	3,540		
Bayshore Management LLC	6	603	120	12,060		
ACUA	-	-	0	0		
-	-	-	0	0		
Total	0	840	120	16,800	840	16,800
<h3 style="text-align: center;">CAMP Air Monitoring Results</h3>						
CAMP Station	UPWIND			DOWNWIND		
Odors:	None.			None.		
VOC Action Level Exceedance(s):	None.			None.		
Particulate Action Level Exceedance(s):	None.			None.		
Maximum VOC Level (ppm):	0.4977			0.2959		
Maximum Particulate Level (mg/m³):	0.2405			0.0466		
There was an exceedence of the 0.15 mg/m³ 15min avg limit from 8:46-9:00 at the upwind CAMP station. This was caused by the contractor welding near the station. The station was moved and no other exceedneces were reported for the day. Due to rain, CAMP was inactive from 13:00 until the end of the work day.						
<h3 style="text-align: center;">Additional Information</h3>						
Planned Work Activity for Following Day/Week:	Continue off-site disposal of soil and concrete debris, excavation, installation of SSDS. Continue with import of clean backfill and 3/4" stone.					
Comments:						

Site Map



LEGEND

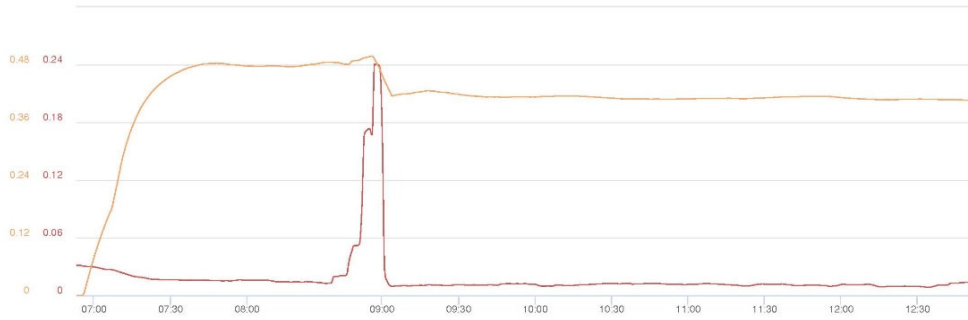
- BCP SITE BOUNDARY
- WASTE CLASS GRID
- REMEDIAL EXCAVATION TO 2 FEET BELOW GROUNDWATER (APPROX. 50 FEET BY 75 FEET, UP TO 11 FEET DEEP) FOR REMOVAL OF SOURCE MATERIAL
- REMEDIAL EXCAVATION TO APPROXIMATELY 2 FEET BELOW EXISTING GRADE
- BOTTOM DOCUMENTATION SAMPLE SOURCE AREA REMOVAL
- SIDEWALL DOCUMENTATION SAMPLE SOURCE AREA REMOVAL
- CONFIMATORY DOCUMENTATION SAMPLE LOCATION



Map Source:
NYCDOCP (NYC Dept. of City Planning) GIS data

Upwind CAMP Station Data

Thu, 13th of Oct 2022, 0:00:00 – 17:23:44
(GMT-05:00) Eastern Time (US & Canada)



Mass Conc. Total mg/m³ AVG 15m
mg/m³
DustTrak-8530
RS232(C)

MIN	AVG	MAX
0.0085	0.0183	0.2405

VOC ppm AVG 15m ppm
miniRAE 3000
RS232(A)

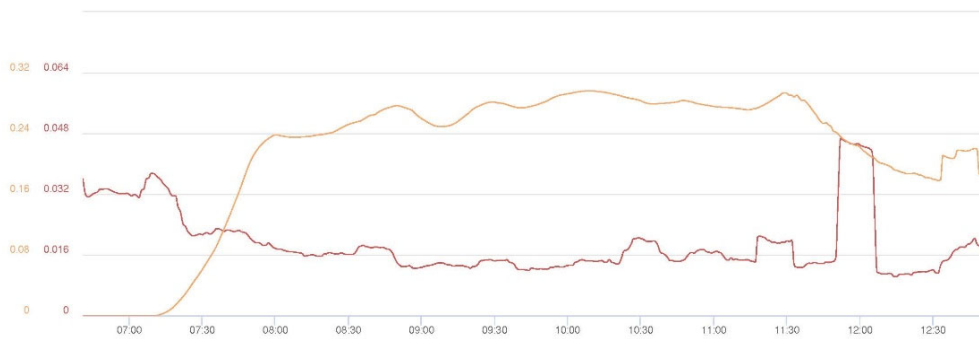
MIN	AVG	MAX
0	0.4115	0.4977

© Netronix 2022

Name Bud Site MID (FA04057)
S/N 0B446167
Description FA04057
Location 2 55th Ave, Long Island
City, NY 11101, USA

Downwind CAMP Station Data

Thu, 13th of Oct 2022, 0:00:00 – 17:25:12
(GMT-05:00) Eastern Time (US & Canada)



Mass Conc. Total mg/m³ AVG 15m
mg/m³
DustTrak-8530
RS232(C)

MIN	AVG	MAX
0.0103	0.0189	0.0466

VOC ppm AVG 15m ppm
miniRAE 3000
RS232(A)

MIN	AVG	MAX
0	0.2158	0.2959

© Netronix 2022

Name Bud DOWNWIND
(FA3254)
S/N 0B312021
Description FA03254
Location 202 54th Ave, Long
Island City, NY 11101,
USA

Site Photographs

Photograph 1 -
Excavation around
pile cap forms in
grid WC-02, and WC-
03. View facing
north.




Photograph 2 -
Excavation for pile
cap, grid WC-01.
View facing
southwest.



Photograph 3 -
Export of soil in WC-
25, and WC-24,
view facing
southeast.



	Daily Activity Report					
	Newtown Creek Bud Site - North Block					
	2-10 54th Avenue, Long Island City, New York					
	BCP No. C241248					
General Site Information						
Date:	Friday, October 14, 2022					
Weather:	Partly Cloudy, Rain 55-73 °F					
Wind Direction/Speed:	N @ 8 mph					
AKRF Personnel on Site:	Hank Westly					
AKRF Equipment on Site:	Mini RAE 3000 Photoionization Detector [(PID) x1], TSI Sidepak Aerosol Monitor, CAMP - 10.6 electron Volt (eV) Mini RAE 3000 PID x 2 and TSI 8530 DustTrak II x 2.					
	None.					
Contractor Information						
Contracting Company	Main Personnel			Equipment		
Bud North GC LLC	Chris Steinmann			None.		
Civetta Cousins JV (Civetta)	Eric Weiberth			Payloader, Track loader, Excavator (x6)		
Description and Location of Work Activities Performed						
Civetta continued installing pile cap forms, cutting piles to final elevation, pouring concrete, and installing waterproofing and rebar. Excavation took place in grid WC-03 and WC-01 to assist concrete form installation. The soil was regraded on site.						
The landscpaing contractor graded and installed foam foundation elements in grids WC-24, and WC-25. The landscaping contractor excavated in WC-19 to assist with the instillation of sewer pipes.						
Site Soil Disposal Tracking Information						
Destination Facility	Daily Trucks	Total Trucks	Daily Approx. Cubic Yds	Total Approx. Cubic Yds	Total Site Loads	Total Approximate Cubic Yards
Clean Earth Carteret	0	60	0	1,200	840	16,800
Clean Earth North Jersey	0	177	0	3,540		
Bayshore Management LLC	0	603	0	12,060		
ACUA	-	-	0	0		
-	-	-	0	0		
Total	0	840	0	16,800	840	16,800
CAMP Air Monitoring Results						
CAMP Station	UPWIND			DOWNWIND		
Odors:	None.			None.		
VOC Action Level Exceedance(s):	None.			None.		
Particulate Action Level Exceedance(s):	None.			None.		
Maximum VOC Level (ppm):	0.7501			0.3629		
Maximum Particulate Level (mg/m³):	0.0216			0.0181		
Comments: None						
Additional Information						
Planned Work Activity for Following Day/Week:	Continue off-site disposal of soil and concrete debris, excavation, installation of SSDS. Continue with import of clean backfill and 3/4" stone.					
Comments:						

Site Map



LEGEND

- BCP SITE BOUNDARY
- WASTE CLASS GRID
- REMEDIAL EXCAVATION TO 2 FEET BELOW GROUNDWATER (APPROX. 50 FEET BY 75 FEET, UP TO 11 FEET DEEP) FOR REMOVAL OF SOURCE MATERIAL
- REMEDIAL EXCAVATION TO APPROXIMATELY 2 FEET BELOW EXISTING GRADE
- BOTTOM DOCUMENTATION SAMPLE SOURCE AREA REMOVAL
- SIDEWALL DOCUMENTATION SAMPLE SOURCE AREA REMOVAL
- CONFIMATORY DOCUMENTATION SAMPLE LOCATION



Map Source:
NYCDOCP (NYC Dept. of City Planning) GIS data

Upwind CAMP Station Data

Fri, 14th of Oct 2022, 0:00:00 – 18:58:14
(GMT-05:00) Eastern Time (US & Canada)



Mass Conc. Total mg/m³ AVG 15m

mg/m³

DustTrak8530

RS232(C)

MIN AVG MAX

0.0068 0.013 0.0216

VOC ppm AVG 15m

ppm

miniRAE 3000

RS232(B)

MIN AVG MAX

0.2567 0.563 0.7501

Name Bud Site UPWIND
(FA04921)
S/N 0B266651
Description (FA04921)
Location 52-37 2nd St, Queens,
NY 11101, USA

© Netronix 2022

Downwind CAMP Station Data

Fri, 14th of Oct 2022, 0:00:00 – 18:58:49
(GMT-05:00) Eastern Time (US & Canada)



Mass Conc. Total mg/m³ AVG 15m

mg/m³

DustTrak8530

RS232(C)

MIN AVG MAX

0.0031 0.0075 0.0181

VOC ppm AVG 15m

ppm

miniRAE 3000

RS232(A)

MIN AVG MAX

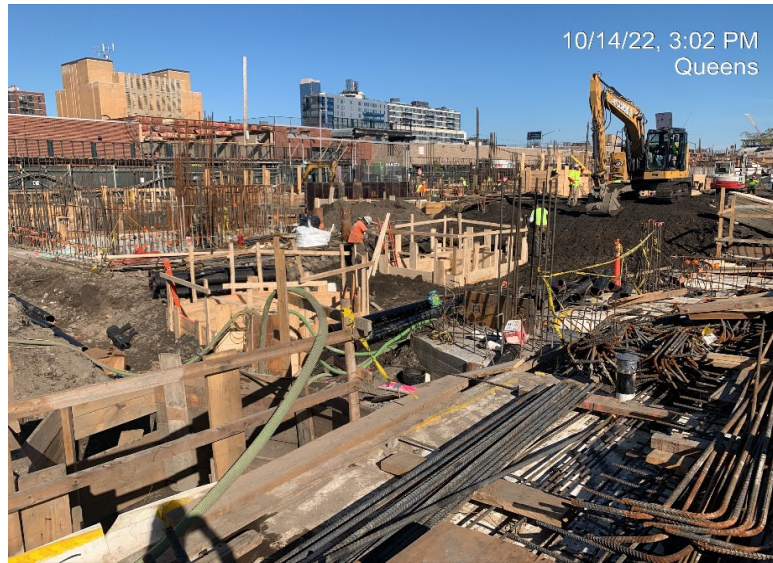
0.1055 0.2925 0.3629

Name Bud Site MID (FA04057)
S/N 0B446167
Description FA04057
Location 2 55th Ave, Long Island
City, NY 11101, USA

© Netronix 2022

Site Photographs

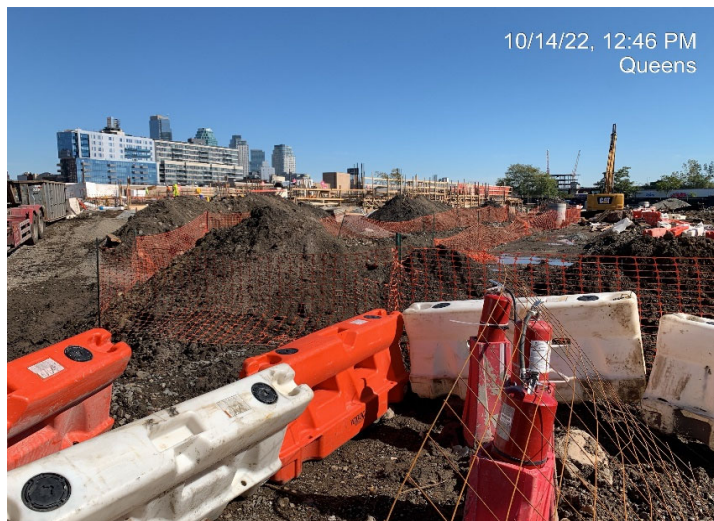
Photograph 1 -
Excavation around
pile cap forms in
grid WC-02, and WC-
01. View facing
northeast.




Photograph 2 -
Instillation of sewer
system, view facing
southwest.



Photograph 3 -
Instillation of sewer
system, view facing
northeast.



	<h2 style="text-align: center;">Daily Activity Report</h2>					
	Newtown Creek Bud Site - North Block					
	2-10 54th Avenue, Long Island City, New York					
	BCP No. C241248					
General Site Information						
Date:	Monday, October 17, 2022					
Weather:	Partly Cloudy, Rain 55-73 °F					
Wind Direction/Speed:	SW @ 8 mph					
AKRF Personnel on Site:	Hank Westly					
AKRF Equipment on Site:	Mini RAE 3000 Photoionization Detector [(PID) x1], TSI Sidepak Aerosol Monitor, CAMP - 10.6 electron Volt (eV) Mini RAE 3000 PID x 2 and TSI 8530 DustTrak II x 2.					
	None.					
Contractor Information						
Contracting Company	Main Personnel			Equipment		
Bud North GC LLC	Chris Steinmann			None.		
Civetta Cousins JV (Civetta)	Eric Weiberth			Payloader, Track loader, Excavator (x6)		
Description and Location of Work Activities Performed						
Civetta continued installing pile cap forms, cutting piles to final elevation, pouring concrete, and installing waterproofing and rebar. Excavation took place in grid WC-03 and WC-01 to assist concrete form installation. The soil was regraded on site.						
The landscpaing contractor graded and installed foam foundation elements in grids WC-24, and WC-25. The landscaping contractor exported four loads of soil to CENJ. The landscaping contractor imported three loads of 57 stone from Astro Agregates, and one load of 1.5" stone from Callahan.						
Site Soil Disposal Tracking Information						
Destination Facility	Daily Trucks	Total Trucks	Daily Approx. Cubic Yds	Total Approx. Cubic Yds	Total Site Loads	Total Approximate Cubic Yards
Clean Earth Carteret	0	60	0	1,200	844	16,880
Clean Earth North Jersey	4	181	80	3,620		
Bayshore Management LLC	0	603	0	12,060		
ACUA	-	-	0	0		
-	-	-	0	0		
Total	0	844	80	16,880	844	16,880
CAMP Air Monitoring Results						
CAMP Station	UPWIND			DOWNWIND		
Odors:	None.			None.		
VOC Action Level Exceedance(s):	None.			None.		
Particulate Action Level Exceedance(s):	None.			None.		
Maximum VOC Level (ppm):	0.3415			0.4942		
Maximum Particulate Level (mg/m³):	0.0455			0.0415		
Comments: The CAMP stations were inactive from 9:20-10:20 due to rain.						
Additional Information						
Planned Work Activity for Following Day/Week:	Continue off-site disposal of soil and concrete debris, excavation, installation of SSDS. Continue with import of clean backfill and 3/4" stone.					
Comments:						

Site Map



LEGEND

- BCP SITE BOUNDARY
- WASTE CLASS GRID
- REMEDIAL EXCAVATION TO 2 FEET BELOW GROUNDWATER (APPROX. 50 FEET BY 75 FEET, UP TO 11 FEET DEEP) FOR REMOVAL OF SOURCE MATERIAL
- REMEDIAL EXCAVATION TO APPROXIMATELY 2 FEET BELOW EXISTING GRADE
- BOTTOM DOCUMENTATION SAMPLE SOURCE AREA REMOVAL
- SIDEWALL DOCUMENTATION SAMPLE SOURCE AREA REMOVAL
- CONFIRMATORY DOCUMENTATION SAMPLE LOCATION



Map Source:
NYC DCP (NYC Dept. of City Planning) GIS data

Upwind CAMP Station Data

10/17/2022 0:00:36 – 10/18/2022 0:00:00
(GMT-05:00) Eastern Time (US & Canada)



Mass Conc. Total mg/m³ AVG 15m
mg/m³
DustTrak-8530
RS232(G)

MIN	AVG	MAX
0.0132	0.0238	0.0455

VOC ppm AVG 15m ppm
miniRAE 3000
RS232(A)

MIN	AVG	MAX
0	0.2091	0.3415

© Netronix 2022

Name Bud Site MID (FA04057)
S/N 0B446167
Description FA04057
Location 2 55th Ave, Long Island
City, NY 11101, USA

Downwind CAMP Station Data

10/17/2022 0:00:27 – 10/18/2022 0:00:00
(GMT-05:00) Eastern Time (US & Canada)



Mass Conc. Total mg/m³ AVG 15m
mg/m³
DustTrak-8530
RS232(G)

MIN	AVG	MAX
0.009	0.0175	0.0415

VOC ppm AVG 15m ppm
miniRAE 3000
RS232(A)

MIN	AVG	MAX
0	0.2343	0.4942

© Netronix 2022

Name Bud DOWNWIND
(FA3254)
S/N 0B312021
Description FA03254
Location 202 54th Ave, Long
Island City, NY 11101,
USA

Site Photographs

Photograph 1 -
Dubner covers
sewer pipes with
concrete WC-19,
view facing west.




Photograph 2 -
Civetta installs pile
cap forms in WC-02,
view facing
northwest.



Photograph 3 -
Dubner importing
stone, view facing
east.



	<h2 style="text-align: center;">Daily Activity Report</h2>					
	Newtown Creek Bud Site - North Block					
	2-10 54th Avenue, Long Island City, New York BCP No. C241248					
<h3 style="text-align: center;">General Site Information</h3>						
Date:	Monday, October 17, 2022					
Weather:	Partly Cloudy 47-56 °F					
Wind Direction/Speed:	W @ 5-9 mph					
AKRF Personnel on Site:	Hank Westly					
AKRF Equipment on Site:	Mini RAE 3000 Photoionization Detector [(PID) x1], TSI Sidepak Aerosol Monitor, CAMP - 10.6 electron Volt (eV) Mini RAE 3000 PID x 2 and TSI 8530 DustTrak II x 2.					
	None.					
<h3 style="text-align: center;">Contractor Information</h3>						
Contracting Company		Main Personnel			Equipment	
Bud North GC LLC		Chris Steinmann			None.	
Civetta Cousins JV (Civetta)		Eric Weiberth			Payloader, Track loader, Excavator (x6)	
<h3 style="text-align: center;">Description and Location of Work Activities Performed</h3>						
Civetta continued installing pile cap forms, cutting piles to final elevation, pouring concrete, and installing waterproofing and rebar. Excavation took place in grid WC-21 to assist concrete form installation.						
The landscpaing contractor graded gravel in grids WC-24, and WC-25, and installed sewer pipes in WC-22. The landscaping contractor imported seven loads of 57 stone from Astro Aggregates, and six load of fill from IRRC.						
<h3 style="text-align: center;">Site Soil Disposal Tracking Information</h3>						
Destination Facility	Daily Trucks	Total Trucks	Daily Approx. Cubic Yds	Total Approx. Cubic Yds	Total Site Loads	Total Approximate Cubic Yards
Clean Earth Carteret	0	60	0	1,200	844	16,880
Clean Earth North Jersey	0	181	0	3,620		
Bayshore Management LLC	0	603	0	12,060		
ACUA	-	-	0	0		
-	-	-	0	0		
Total	0	844	0	16,880	844	16,880
<h3 style="text-align: center;">CAMP Air Monitoring Results</h3>						
CAMP Station	UPWIND			DOWNWIND		
Odors:	None.			None.		
VOC Action Level Exceedance(s):	None.			None.		
Particulate Action Level Exceedance(s):	None.			None.		
Maximum VOC Level (ppm):	0.4163			0.5419		
Maximum Particulate Level (mg/m³):	0.0637			0.0169		
Comments: None						
<h3 style="text-align: center;">Additional Information</h3>						
Planned Work Activity for Following Day/Week:	Continue off-site disposal of soil and concrete debris, excavation, installation of SSDS. Continue with import of clean backfill and 3/4" stone.					
Comments:						

Site Map



LEGEND

- BCP SITE BOUNDARY
- WASTE CLASS GRID
- REMEDIAL EXCAVATION TO 2 FEET BELOW GROUNDWATER (APPROX. 50 FEET BY 75 FEET, UP TO 11 FEET DEEP) FOR REMOVAL OF SOURCE MATERIAL
- REMEDIAL EXCAVATION TO APPROXIMATELY 2 FEET BELOW EXISTING GRADE
- BOTTOM DOCUMENTATION SAMPLE SOURCE AREA REMOVAL
- SIDEWALL DOCUMENTATION SAMPLE SOURCE AREA REMOVAL
- CONFIRMATORY DOCUMENTATION SAMPLE LOCATION



Map Source:
NYCDDP (NYC Dept. of City Planning) GIS data

Upwind CAMP Station Data

Tue, 18th of Oct 2022, 0:00:00 – 16:20:17
(GMT-05:00) Eastern Time (US & Canada)



Mass Conc. Total mg/m³ AVG 15m

DustTrak-8530

BS232(O)

MIN	AVG	MAX
0.0059	0.0141	0.0637

VOC ppm AVG 15m ppm

miniRAE 3000

BS232(O)

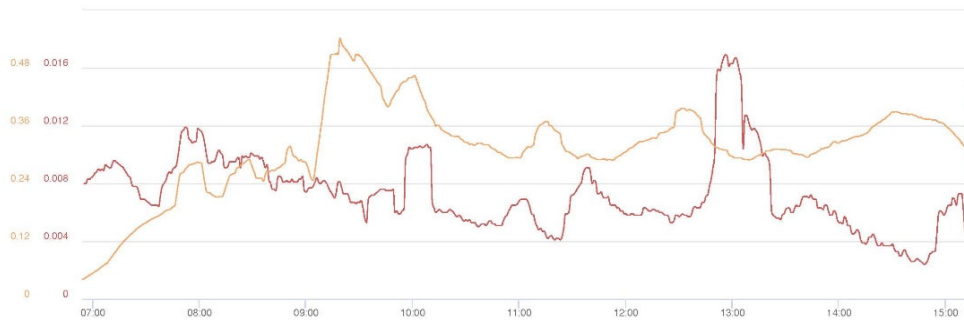
MIN	AVG	MAX
0.073	0.2107	0.4163

© Netronix 2022

Name Bud Site MID (FA04057)
S/N 0B446167
Description FA04057
Location 2 55th Ave, Long Island
City, NY 11101, USA

Downwind CAMP Station Data

Tue, 18th of Oct 2022, 0:00:00 – 16:21:23
(GMT-05:00) Eastern Time (US & Canada)



Mass Conc. Total mg/m³ AVG 15m

DustTrak-8530

BS232(O)

MIN	AVG	MAX
0.0024	0.0073	0.0169

VOC ppm AVG 15m ppm

miniRAE 3000

BS232(O)

MIN	AVG	MAX
0.041	0.314	0.5419

© Netronix 2022

Name Bud DOWNWIND
(FA3254)
S/N 0B312021
Description FA03254
Location 52-37 2nd St, Queens,
NY 11101, USA

Site Photographs

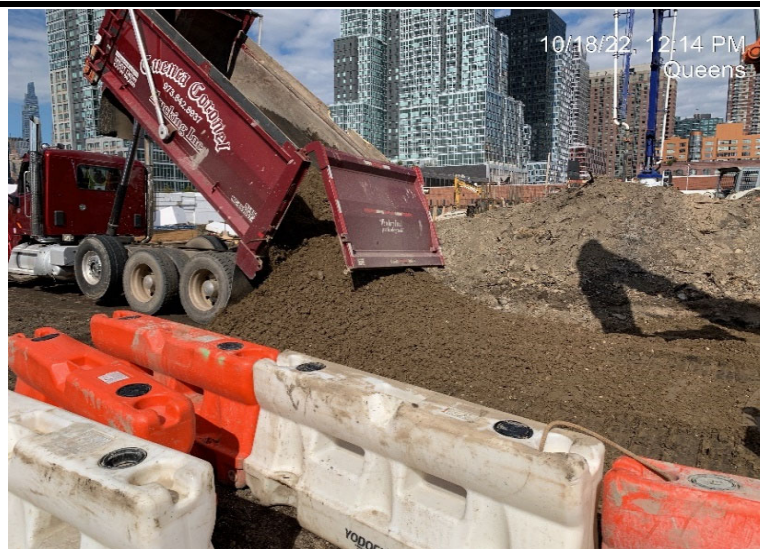
Photograph 1 -
Civetta pours
concrete into pile
caps, view facing
north.




Photograph 2 - The
landscaping
contractor installs
sewer system in WC
22, view facing
south.



Photograph 3 -
Dubner importing
fill, view facing
northwest.



	Daily Activity Report					
	Newtown Creek Bud Site - North Block					
	2-10 54th Avenue, Long Island City, New York					
	BCP No. C241248					
General Site Information						
Date:	Wednesday, October 19, 2022					
Weather:	Clear 41-53 °F					
Wind Direction/Speed:	W @ 5-9 mph					
AKRF Personnel on Site:	Hank Westly					
AKRF Equipment on Site:	Mini RAE 3000 Photoionization Detector [(PID) x1], TSI Sidepak Aerosol Monitor, CAMP - 10.6 electron Volt (eV) Mini RAE 3000 PID x 2 and TSI 8530 DustTrak II x 2.					
	None.					
Contractor Information						
Contracting Company	Main Personnel			Equipment		
Bud North GC LLC	Chris Steinmann			None.		
Civetta Cousins JV (Civetta)	Eric Weiberth			Payloader, Track loader, Excavator (x6)		
Description and Location of Work Activities Performed						
Civetta continued installing pile cap forms, cutting piles to final elevation, pouring concrete, and installing waterproofing and rebar. Excavation took place in grid WC-21 to assist concrete form installation.						
The landscpaing contractor graded gravel in grids WC-24, and WC-25, and installed sewer pipes in WC-22. The landscaping contractor exported four loads of soil to Clean Eart of North Jersey from WC-19. The landscaping contractor imported six loads of 57 stone from Astro Aggregates. Civetta Cousins imported six loads of general fill from IRRC to grid WC-03.						
Site Soil Disposal Tracking Information						
Destination Facility	Daily Trucks	Total Trucks	Daily Approx. Cubic Yds	Total Approx. Cubic Yds	Total Site Loads	Total Approximate Cubic Yards
Clean Earth Carteret	0	60	0	1,200	848	16,960
Clean Earth North Jersey	4	185	80	3,700		
Bayshore Management LLC	0	603	0	12,060		
ACUA	-	-	0	0		
-	-	-	0	0		
Total	0	848	80	16,960	848	16,960
CAMP Air Monitoring Results						
CAMP Station	UPWIND			DOWNWIND		
Odors:	None.			None.		
VOC Action Level Exceedance(s):	None.			None.		
Particulate Action Level Exceedance(s):	None.			None.		
Maximum VOC Level (ppm):	0.2043			0.3846		
Maximum Particulate Level (mg/m³):	0.0507			0.0787		
Comments: None						
Additional Information						
Planned Work Activity for Following Day/Week:	Continue off-site disposal of soil and concrete debris, excavation, installation of SSDS. Continue with import of clean backfill and 3/4" stone.					
Comments:						

Site Map



LEGEND

- BCP SITE BOUNDARY
- WASTE CLASS GRID
- REMEDIAL EXCAVATION TO 2 FEET BELOW GROUNDWATER (APPROX. 50 FEET BY 75 FEET, UP TO 11 FEET DEEP) FOR REMOVAL OF SOURCE MATERIAL
- REMEDIAL EXCAVATION TO APPROXIMATELY 2 FEET BELOW EXISTING GRADE
- BOTTOM DOCUMENTATION SAMPLE SOURCE AREA REMOVAL
- SIDEWALL DOCUMENTATION SAMPLE SOURCE AREA REMOVAL
- CONFIMATORY DOCUMENTATION SAMPLE LOCATION



Map Source:
NYCDOCP (NYC Dept. of City Planning) GIS data

Upwind CAMP Station Data

Wed, 19th of Oct 2022, 0:00:00 – 18:42:10
(GMT-05:00) Eastern Time (US & Canada)



Mass Conc. Total mg/m³ AVG 15m

mg/m³

DustTrak-8530

RS232(G)

MIN AVG MAX

0.0032 0.0125 0.0507

VOC ppm AVG 15m

ppm

miniRAE 3000

RS232(G)

MIN AVG MAX

0 0.1379 0.2043

Name Bud Site MID (FA04057)
S/N 0B446167
Description FA04057
Location 202 54th Ave, Long
Island City, NY 11101,
USA

© Neutronix 2022

Downwind CAMP Station Data

Wed, 19th of Oct 2022, 0:00:00 – 18:43:12
(GMT-05:00) Eastern Time (US & Canada)



Mass Conc. Total mg/m³ AVG 15m

mg/m³

DustTrak-8530

RS232(G)

MIN AVG MAX

0.0051 0.0318 0.0787

VOC ppm AVG 15m

ppm

miniRAE 3000

RS232(G)

MIN AVG MAX

0.0504 0.2691 0.3846

Name Bud DOWNWIND
(FA3254)
S/N 0B312021
Description FA03254
Location 52-37 2nd St, Queens,
NY 11101, USA

© Neutronix 2022

Site Photographs

Photograph 1 - The landscaping contractor grading gravel in WC-25 and WC-24.




Photograph 2 - The landscaping contractor exporting soil to CENJ, view facing south.



Photograph 3 - Civetta moving supplies and installing rebar in WC-03 and WC-04, view facing north.



	Daily Activity Report					
	Newtown Creek Bud Site - North Block					
	2-10 54th Avenue, Long Island City, New York					
	BCP No. C241248					
General Site Information						
Date:	Thursday, October 20, 2022					
Weather:	43-59 °F Clear					
Wind Direction/Speed:	W @ 5-9 mph					
AKRF Personnel on Site:	Hank Westly					
AKRF Equipment on Site:	Mini RAE 3000 Photoionization Detector [(PID) x1], TSI Sidepak Aerosol Monitor, CAMP - 10.6 electron Volt (eV) Mini RAE 3000 PID x 2 and TSI 8530 DustTrak II x 2.					
	None.					
Contractor Information						
Contracting Company	Main Personnel			Equipment		
Bud North GC LLC	Chris Steinmann			None.		
Civetta Cousins JV (Civetta)	Eric Weiberth			Payloader, Track loader, Excavator (x6)		
Description and Location of Work Activities Performed						
Civetta continued installing pile cap forms, cutting piles to final elevation, pouring concrete, and installing waterproofing and rebar.						
The landscpaing contractor installed sewer pipes in WC-22. The landscaping contractor exported four loads of soil to Clean Earth of North Jersey from WC-20.						
Site Soil Disposal Tracking Information						
Destination Facility	Daily Trucks	Total Trucks	Daily Approx. Cubic Yds	Total Approx. Cubic Yds	Total Site Loads	Total Approximate Cubic Yards
Clean Earth Carteret	0	60	0	1,200	852	17,040
Clean Earth North Jersey	4	189	80	3,780		
Bayshore Management LLC	0	603	0	12,060		
ACUA	-	-	0	0		
-	-	-	0	0		
Total	0	852	80	17,040	852	17,040
CAMP Air Monitoring Results						
CAMP Station	UPWIND			DOWNWIND		
Odors:	None.			None.		
VOC Action Level Exceedance(s):	None.			None.		
Particulate Action Level Exceedance(s):	None.			None.		
Maximum VOC Level (ppm):	0.4854			0.3286		
Maximum Particulate Level (mg/m³):	0.0588			0.016		
Comments: None						
Additional Information						
Planned Work Activity for Following Day/Week:	Continue off-site disposal of soil and concrete debris, excavation, installation of SSDS. Continue with import of clean backfill and 3/4" stone.					
Comments:						

Site Map



LEGEND

- BCP SITE BOUNDARY
- WASTE CLASS GRID
- REMEDIAL EXCAVATION TO 2 FEET BELOW GROUNDWATER (APPROX. 50 FEET BY 75 FEET, UP TO 11 FEET DEEP) FOR REMOVAL OF SOURCE MATERIAL
- REMEDIAL EXCAVATION TO APPROXIMATELY 2 FEET BELOW EXISTING GRADE
- BOTTOM DOCUMENTATION SAMPLE SOURCE AREA REMOVAL
- SIDEWALL DOCUMENTATION SAMPLE SOURCE AREA REMOVAL
- CONFIMATORY DOCUMENTATION SAMPLE LOCATION



Map Source:
NYCDOCP (NYC Dept. of City Planning) GIS data

Upwind CAMP Station Data

Thu, 20th of Oct 2022, 0:00:00 – 17:19:23
(GMT-05:00) Eastern Time (US & Canada)



Mass Conc. Total mg/m³ AVG 15m
mg/m³
DustTrak-8530
85222(a)

MIN	AVG	MAX
0.0075	0.0177	0.0588

VOC ppm AVG 15m ppm
miniRAE 3000
85222(a)

MIN	AVG	MAX
0.013	0.3798	0.4854

© Netronix 2022

Name Bud Site MID (FA04057)
S/N 0B446167
Description FA04057
Location 2 55th Ave, Long Island
City, NY 11101, USA

Downwind CAMP Station Data

Thu, 20th of Oct 2022, 0:00:00 – 17:20:00
(GMT-05:00) Eastern Time (US & Canada)



Mass Conc. Total mg/m³ AVG 15m
mg/m³
DustTrak-8530
85222(a)

MIN	AVG	MAX
-0.001	0.0009	0.016

VOC ppm AVG 15m ppm
miniRAE 3000
85222(a)

MIN	AVG	MAX
0	0.2251	0.3286

© Netronix 2022

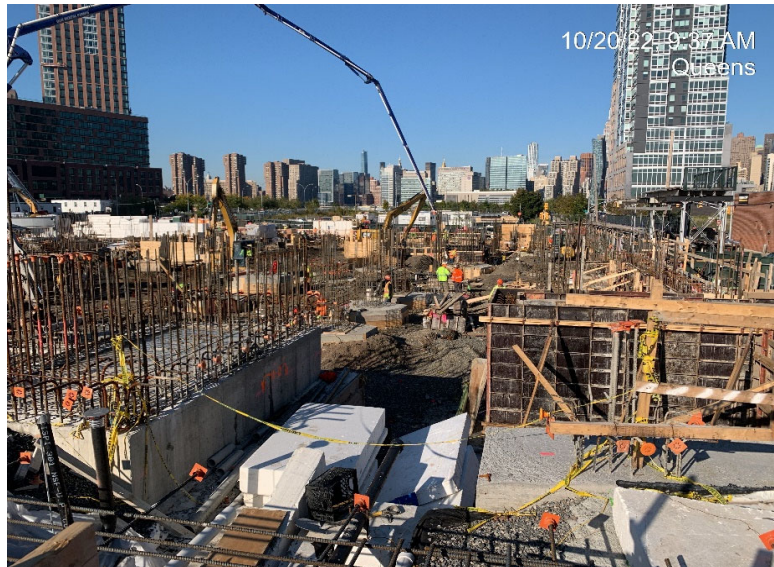
Name Bud DOWNWIND
(FA3254)
S/N 0B312021
Description FA03254
Location 52-37 2nd St, Queens,
NY 11101, USA

Site Photographs

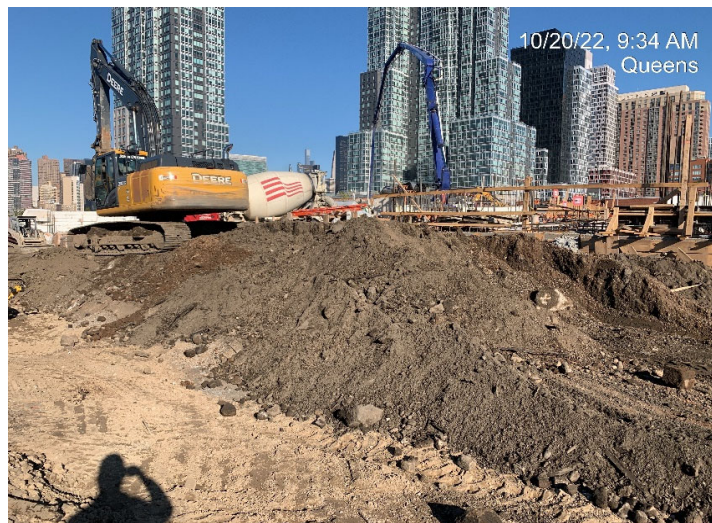
Photograph 1 -
Civetta pouring pile
caps in grid WC-04,
view facing
northeast.




Photograph 2 -
Civetta pouring pile
caps in grid WC-03,
view facing west.



Photograph 3 - The
landscaping contractor
aerating soil prior to export
in WC-19, view
facing northwest.



	Daily Activity Report					
	Newtown Creek Bud Site - North Block					
	2-10 54th Avenue, Long Island City, New York					
	BCP No. C241248					
General Site Information						
Date:	Friday, October 21, 2022					
Weather:	47-62 °F Clear					
Wind Direction/Speed:	W @ 8 mph					
AKRF Personnel on Site:	Hank Westly					
AKRF Equipment on Site:	Mini RAE 3000 Photoionization Detector [(PID) x1], TSI Sidepak Aerosol Monitor, CAMP - 10.6 electron Volt (eV) Mini RAE 3000 PID x 2 and TSI 8530 DustTrak II x 2.					
	None.					
Contractor Information						
Contracting Company	Main Personnel			Equipment		
Bud North GC LLC	Chris Steinmann			None.		
Civetta Cousins JV (Civetta)	Eric Weiberth			Payloader, Track loader, Excavator (x6)		
Description and Location of Work Activities Performed						
Civetta continued installing pile cap forms, cutting piles to final elevation, pouring concrete, and installing waterproofing and rebar. Civetta imported two loads of 3/4" stone from IRRC and five loads of 3/4" stone from Braen stone.						
The landscpaing contractor installed sewer pipes in WC-22. The landscaping contractor exported four loads of soil to Clean Earth of North Jersey from WC-20.						
Site Soil Disposal Tracking Information						
Destination Facility	Daily Trucks	Total Trucks	Daily Approx. Cubic Yds	Total Approx. Cubic Yds	Total Site Loads	Total Approximate Cubic Yards
Clean Earth Carteret	0	60	0	1,200	856	17,120
Clean Earth North Jersey	4	193	80	3,860		
Bayshore Management LLC	0	603	0	12,060		
ACUA	-	-	0	0		
-	-	-	0	0		
Total	4	856	80	17,120	856	17,120
CAMP Air Monitoring Results						
CAMP Station	UPWIND			DOWNWIND		
Odors:	None.			None.		
VOC Action Level Exceedance(s):	None.			None.		
Particulate Action Level Exceedance(s):	One.			None.		
Maximum VOC Level (ppm):	0.4725			0.6229		
Maximum Particulate Level (mg/m³):	0.415			0.1011		
Comments: There was one exceedance at the upwind CAMP station around 10:00. This was due to the enclosure being relocated by Civetta personel without notification to AKRF field staff. Exceedance was not due to Site activities.						
Additional Information						
Planned Work Activity for Following Day/Week:	Continue off-site disposal of soil and concrete debris, excavation, installation of SSDS. Continue with import of clean backfill and 3/4" stone.					
Comments:						

Site Map



LEGEND

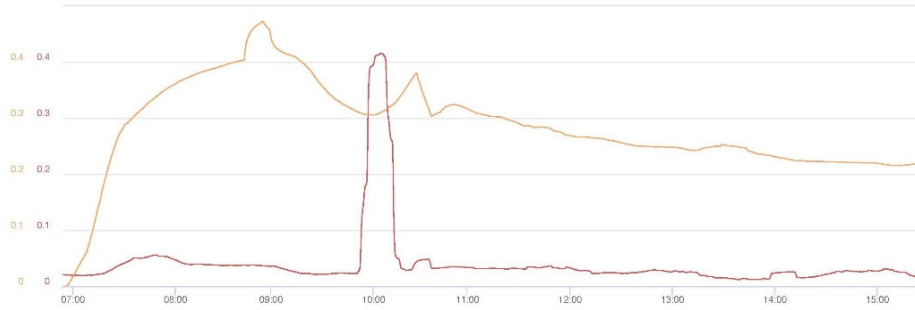
- BCP SITE BOUNDARY
- WASTE CLASS GRID
- REMEDIAL EXCAVATION TO 2 FEET BELOW GROUNDWATER (APPROX. 50 FEET BY 75 FEET, UP TO 11 FEET DEEP) FOR REMOVAL OF SOURCE MATERIAL
- REMEDIAL EXCAVATION TO APPROXIMATELY 2 FEET BELOW EXISTING GRADE
- BOTTOM DOCUMENTATION SAMPLE SOURCE AREA REMOVAL
- SIDEWALL DOCUMENTATION SAMPLE SOURCE AREA REMOVAL
- CONFIMATORY DOCUMENTATION SAMPLE LOCATION



Map Source:
NYCDOCP (NYC Dept. of City Planning) GIS data

Upwind CAMP Station Data

Fri, 21st of Oct 2022, 0:00:00 – 17:29:49
(GMT-05:00) Eastern Time (US & Canada)



Mass Conc. Total mg/m³ AVG 15m
mg/m³
DustTrak-8530
RS222(C)

MIN	AVG	MAX
0.0119	0.0405	0.415

VOC ppm AVG 15m ppm
ppm
miniRAE 3000
RS222(A)

MIN	AVG	MAX
0	0.2848	0.4725

© Netronix 2022

Name Bud Site MID (FA04057)
S/N 0B446167
Description FA04057
Location 255th Ave, Long Island
City, NY 11101, USA

Downwind CAMP Station Data

Fri, 21st of Oct 2022, 0:00:00 – 17:31:12
(GMT-05:00) Eastern Time (US & Canada)



Mass Conc. Total mg/m³ AVG 15m
mg/m³
DustTrak-8530
RS222(C)

MIN	AVG	MAX
0.0083	0.032	0.1011

VOC ppm AVG 15m ppm
ppm
miniRAE 3000
RS222(A)

MIN	AVG	MAX
0.04	0.343	0.6229

© Netronix 2022

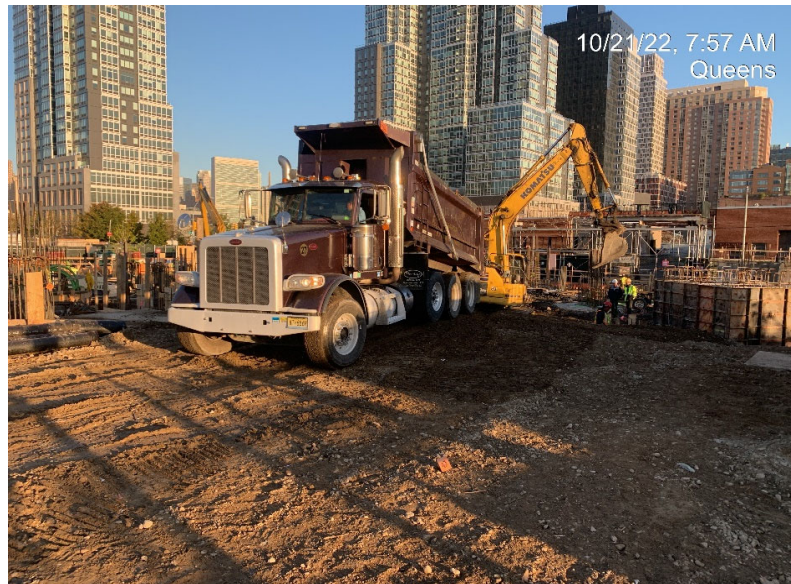
Name Bud DOWNWIND
(FA3254)
S/N 0B312021
Description FA03254
Location 52-37 2nd St, Queens,
NY 11101, USA

Site Photographs

Photograph 1 - The landscaping contractor pouring concrete over the sewer pipes in grid WC-22, view facing southwest.




Photograph 2 - Civetta importing 3/4" stone to grid WC-03.



Photograph 3 - The landscaping contractor exporting soil to CENJ, view facing northwest.










		Daily Activity Report					
		Newtown Creek Bud Site - North Block					
		2-10 54th Avenue, Long Island City, New York					
		BCP No. C241248					
General Site Information							
Date:		Monday, October 24, 2022					
Weather:		55-61 °F Light Rain/Overcast					
Wind Direction/Speed:		N @ 10 mph					
AKRF Personnel on Site:		Hank Westly					
AKRF Equipment on Site:		Mini RAE 3000 Photoionization Detector [(PID) x1], TSI Sidepak Aerosol Monitor, CAMP - 10.6 electron Volt (eV) Mini RAE 3000 PID x 2 and TSI 8530 DustTrak II x 2.					
		None.					
Contractor Information							
Contracting Company		Main Personnel			Equipment		
Bud North GC LLC		Chris Steinmann			None.		
Civetta Cousins JV (Civetta)		Eric Weiberth			Payloader, Track loader, Excavator (x6)		
Description and Location of Work Activities Performed							
Civetta continued installing pile cap forms, cutting piles to final elevation, pouring concrete, and installing waterproofing and rebar. Civetta imported two loads of 3/4" stone from IRRC and five loads of 3/4" stone from Braen stone.							
The landscpaing contractor graded gravel in WC-25. The landscaping contractor exported four loads of soil to Clean Earth of North Jersey from WC-20. The landscapers also imported seven loads of 57 stone from Astro Aggregates, and two loads of fill from IRRC.							
Site Soil Disposal Tracking Information							
Destination Facility	Daily Trucks	Total Trucks	Daily Approx. Cubic Yds	Total Approx. Cubic Yds	Total Site Loads	Total Approximate Cubic Yards	
Clean Earth Carteret	0	60	0	1,200	860	17,200	
Clean Earth North Jersey	4	197	80	3,940			
Bayshore Management LLC	0	603	0	12,060			
ACUA	-	-	0	0			
-	-	-	0	0			
Total	4	860	80	17,200	860	17,200	
CAMP Air Monitoring Results							
CAMP Station	UPWIND			DOWNWIND			
Odors:	None.			None.			
VOC Action Level Exceedance(s):	None.			None.			
Particulate Action Level Exceedance(s):	None.			None.			
Maximum VOC Level (ppm):	2.3445			N/A			
Maximum Particulate Level (mg/m³):	0.0407			0.0435			
Comments: The the CAMP stations were not active from 8:00-11:00 due to rain. An equipment error with the downwind PID caused it to not report for the day. The issue was troubleshot and will be resolved tomorrow.							
Additional Information							
Planned Work Activity for Following Day/Week:	Continue off-site disposal of soil and concrete debris, excavation, installation of SSDS. Continue with import of clean backfill and 3/4" stone.						
Comments:							

Site Map



LEGEND

-  BCP SITE BOUNDARY
-  WASTE CLASS GRID
-  REMEDIAL EXCAVATION TO 2 FEET BELOW GROUNDWATER (APPROX. 50 FEET BY 75 FEET, UP TO 11 FEET DEEP) FOR REMOVAL OF SOURCE MATERIAL
-  REMEDIAL EXCAVATION TO APPROXIMATELY 2 FEET BELOW EXISTING GRADE
-  BOTTOM DOCUMENTATION SAMPLE SOURCE AREA REMOVAL
-  SIDEWALL DOCUMENTATION SAMPLE SOURCE AREA REMOVAL
-  CONFIRMATORY DOCUMENTATION SAMPLE LOCATION



Map Source:
NYC DCP (NYC Dept. of City Planning) GIS data

Upwind CAMP Station Data

Mon, 24th of Oct 2022, 0:00:00 – 17:31:33
(GMT-05:00) Eastern Time (US & Canada)



Mass Conc. Total mg/m³ AVG 15m
mg/m³
DustTrek-8530
RS232(C)

MIN	AVG	MAX
0.0159	0.0226	0.0407

VOC ppm AVG 15m ppm
miniRAE 3000
RS232(A)

MIN	AVG	MAX
0	1.8824	2.3445

Name Bud Site UPWIND
(FA04921)
S/N 08266651
Description (FA04921)
Location 52-37 2nd St, Queens,
NY 11101, USA

© Netronix 2022

Downwind CAMP Station Data



Mass Conc. Total mg/m³ AVG 15m
mg/m³
DustTrek-8530
RS232(C)

MIN	AVG	MAX
0.0117	0.02	0.0435

VOC ppm AVG 15m ppm
miniRAE 3000
RS232(A)

MIN	AVG	MAX

Site Photographs

Photograph 1 - The landscaping contractor importing fill from IRRC.




Photograph 2 - The landscaping contractor grading gravel, view facing northwest.



Photograph 3 - The landscaping contractor exporting soil to CENJ, view facing northwest.










	<h2 style="text-align: center;">Daily Activity Report</h2>					
	Newtown Creek Bud Site - North Block					
	2-10 54th Avenue, Long Island City, New York BCP No. C241248					
<h3 style="text-align: center;">General Site Information</h3>						
Date:	Tuesday, October 25, 2022					
Weather:	64-68 °F Fog					
Wind Direction/Speed:	W @ 6 mph					
AKRF Personnel on Site:	Hank Westly					
AKRF Equipment on Site:	Mini RAE 3000 Photoionization Detector [(PID) x1], TSI Sidepak Aerosol Monitor, CAMP - 10.6 electron Volt (eV) Mini RAE 3000 PID x 2 and TSI 8530 DustTrak II x 2.					
	None.					
<h3 style="text-align: center;">Contractor Information</h3>						
Contracting Company		Main Personnel			Equipment	
Bud North GC LLC		Chris Steinmann			None.	
Civetta Cousins JV (Civetta)		Eric Weiberth			Payloader, Track loader, Excavator (x6)	
<h3 style="text-align: center;">Description and Location of Work Activities Performed</h3>						
Civetta installed SSDS piping and geofoam foundation blocks in grid WC-04. Civetta imported six loads of 3/4" stone from IRRC. Civetta regraded this stone over grids WC-03 and WC-04.						
The landscaping contractor graded gravel in WC-25. The landscaping contractor imported seven loads of 57 stone from Astro Aggregates.						
<h3 style="text-align: center;">Site Soil Disposal Tracking Information</h3>						
Destination Facility	Daily Trucks	Total Trucks	Daily Approx. Cubic Yds	Total Approx. Cubic Yds	Total Site Loads	Total Approximate Cubic Yards
Clean Earth Carteret	0	60	0	1,200	860	17,200
Clean Earth North Jersey	0	197	0	3,940		
Bayshore Management LLC	0	603	0	12,060		
ACUA	-	-	0	0		
-	-	-	0	0		
Total	0	860	0	17,200	860	17,200
<h3 style="text-align: center;">CAMP Air Monitoring Results</h3>						
CAMP Station	UPWIND			DOWNWIND		
Odors:	None.			None.		
VOC Action Level Exceedance(s):	None.			None.		
Particulate Action Level Exceedance(s):	None.			None.		
Maximum VOC Level (ppm):	1.8155			2.6076		
Maximum Particulate Level (mg/m³):	0.0863			0.1297		
Comments: None.						
<h3 style="text-align: center;">Additional Information</h3>						
Planned Work Activity for Following Day/Week:	Continue off-site disposal of soil and concrete debris, excavation, installation of SSDS. Continue with import of clean backfill and 3/4" stone.					
Comments:						

Site Map



LEGEND

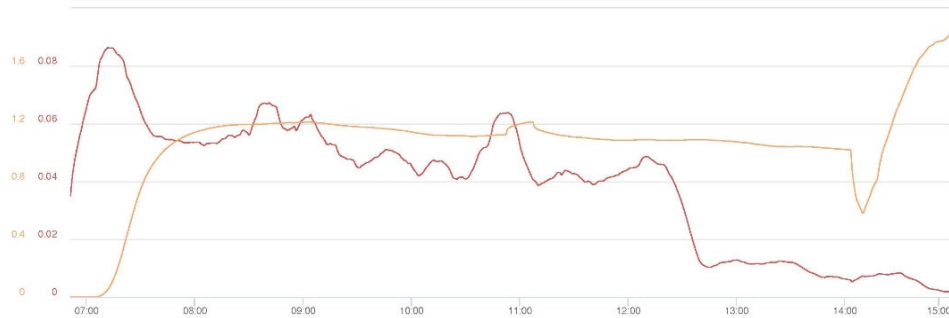
-  BCP SITE BOUNDARY
-  WASTE CLASS GRID
-  REMEDIAL EXCAVATION TO 2 FEET BELOW GROUNDWATER (APPROX. 50 FEET BY 75 FEET, UP TO 11 FEET DEEP) FOR REMOVAL OF SOURCE MATERIAL
-  REMEDIAL EXCAVATION TO APPROXIMATELY 2 FEET BELOW EXISTING GRADE
-  BOTTOM DOCUMENTATION SAMPLE SOURCE AREA REMOVAL
-  SIDEWALL DOCUMENTATION SAMPLE SOURCE AREA REMOVAL
-  CONFIRMATORY DOCUMENTATION SAMPLE LOCATION



Map Source:
NYC DCP (NYC Dept. of City Planning) GIS data

Upwind CAMP Station Data

Tue, 25th of Oct 2022, 0:00:00 – 17:11:35
(GMT-05:00) Eastern Time (US & Canada)



Mass Conc. Total mg/m³ AVG 15m
mg/m³
DustTrak-8530
RS232(G)

MIN	AVG	MAX
0.0018	0.0394	0.0863

VOC ppm AVG 15m
ppm
miniRAE 3000
RS232(A)

MIN	AVG	MAX
0	1.0583	1.8155

© Netronix 2022

Name Bud Site MID (FA04057)
S/N 08446167
Description FA04057
Location 2 55th Ave, Long Island
City, NY 11101, USA

Downwind CAMP Station Data

Tue, 25th of Oct 2022, 0:00:00 – 17:12:44
(GMT-05:00) Eastern Time (US & Canada)



Mass Conc. Total mg/m³ AVG 15m
mg/m³
DustTrak-8530
RS232(G)

MIN	AVG	MAX
0.008	0.0459	0.1297

VOC ppm AVG 15m
ppm
miniRAE 3000
RS232(A)

MIN	AVG	MAX
0.002	0.6707	2.6076

© Netronix 2022

Name Bud DOWNWIND
(FA3254)
S/N 08312021
Description FA03254
Location 52-37 2nd St, Queens,
NY 11101, USA

Site Photographs

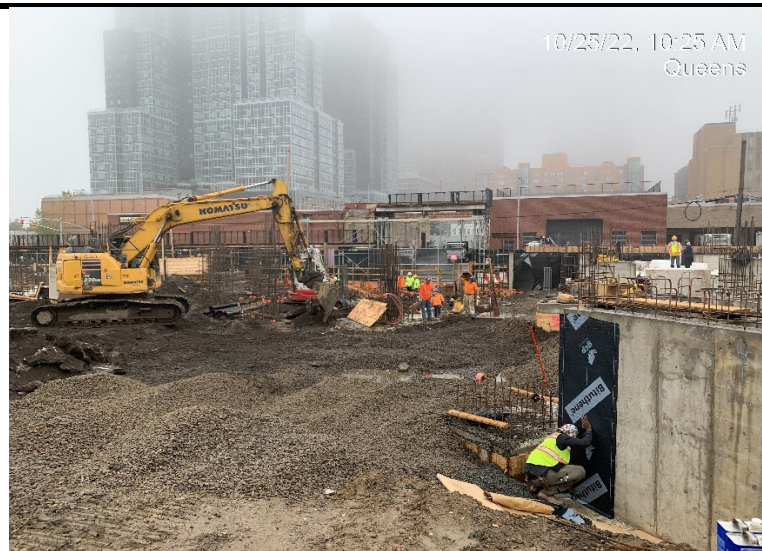
Photograph 1 -
Civetta importing
3/4" stone from
IRRC.



Photograph 2 - The
landscaping
contractor grading
gravel, view facing
northwest.



Photograph 3 -
Civetta spreading
imported gravel in
grid WC-03, view
facing north.



	<h2 style="text-align: center;">Daily Activity Report</h2>					
	Newtown Creek Bud Site - North Block					
	2-10 54th Avenue, Long Island City, New York BCP No. C241248					
<h3 style="text-align: center;">General Site Information</h3>						
Date:	Wednesday, October 26, 2022					
Weather:	54-68 °F Overcast					
Wind Direction/Speed:	S @ 7 mph					
AKRF Personnel on Site:	Hank Westly					
AKRF Equipment on Site:	Mini RAE 3000 Photoionization Detector [(PID) x1], TSI Sidepak Aerosol Monitor, CAMP - 10.6 electron Volt (eV) Mini RAE 3000 PID x 2 and TSI 8530 DustTrak II x 2.					
	None.					
<h3 style="text-align: center;">Contractor Information</h3>						
Contracting Company		Main Personnel			Equipment	
Bud North GC LLC		Chris Steinmann			None.	
Civetta Cousins JV (Civetta)		Eric Weiberth			Payloader, Track loader, Excavator (x6)	
<h3 style="text-align: center;">Description and Location of Work Activities Performed</h3>						
Civetta installed SSDS piping and geofoam foundation blocks in grid WC-04 and continued pouring concrete.						
The landscaping contractor graded gravel in WC-25. The landscaping contractor imported three loads of fill from IRRRC, and exported six loads of material to Clean Earth North Jersey (CENJ).						
<h3 style="text-align: center;">Site Soil Disposal Tracking Information</h3>						
Destination Facility	Daily Trucks	Total Trucks	Daily Approx. Cubic Yds	Total Approx. Cubic Yds	Total Site Loads	Total Approximate Cubic Yards
Clean Earth Carteret	0	60	0	1,200	866	17,320
Clean Earth North Jersey	6	203	120	4,060		
Bayshore Management LLC	0	603	0	12,060		
ACUA	-	-	0	0		
-	-	-	0	0		
Total	6	866	120	17,320	866	17,320
<h3 style="text-align: center;">CAMP Air Monitoring Results</h3>						
CAMP Station	UPWIND			DOWNWIND		
Odors:	None.			None.		
VOC Action Level Exceedance(s):	One.			None.		
Particulate Action Level Exceedance(s):	None.			One.		
Maximum VOC Level (ppm):	11.184			0.4586		
Maximum Particulate Level (mg/m³):	0.0629			0.58		
Comments: There was an exceedence at the upwind CAMP station of the VOC 15min avg of 5ppm. This exceedence was caused by using calibration gas that was no longer viable. The PID was recalibrated with new calibration gas and the levels remained below the exceedence level for the rest of the day. There was an exceedences at the downwind CAMP station of the particulate 15min avg of .150 (mg/m³). This was caused by excavation of the street along the western border of the site. This activity was stopped and no other exceedences were reported for the day.						
<h3 style="text-align: center;">Additional Information</h3>						
Planned Work Activity for Following Day/Week:	Continue off-site disposal of soil and concrete debris, excavation, installation of SSDS. Continue with import of clean backfill and 3/4" stone.					
Comments:						

Site Map



LEGEND

- BCP SITE BOUNDARY
- WASTE CLASS GRID
- REMEDIAL EXCAVATION TO 2 FEET BELOW GROUNDWATER (APPROX. 50 FEET BY 75 FEET, UP TO 11 FEET DEEP) FOR REMOVAL OF SOURCE MATERIAL
- REMEDIAL EXCAVATION TO APPROXIMATELY 2 FEET BELOW EXISTING GRADE
- BOTTOM DOCUMENTATION SAMPLE SOURCE AREA REMOVAL
- SIDEWALL DOCUMENTATION SAMPLE SOURCE AREA REMOVAL
- CONFIMATORY DOCUMENTATION SAMPLE LOCATION



Map Source:
NYCDOCP (NYC Dept. of City Planning) GIS data

Upwind CAMP Station Data

Wed, 26th of Oct 2022, 0:00:00 – 16:53:59
(GMT-05:00) Eastern Time (US & Canada)



Mass Conc. Total mg/m³ AVG 15m

mg/m³

DustTrak-8530

RS232C

MIN	AVG	MAX
0.0152	0.031	0.0629

VOC ppm AVG 15m ppm

ppm

miniRAE 3000

RS232C

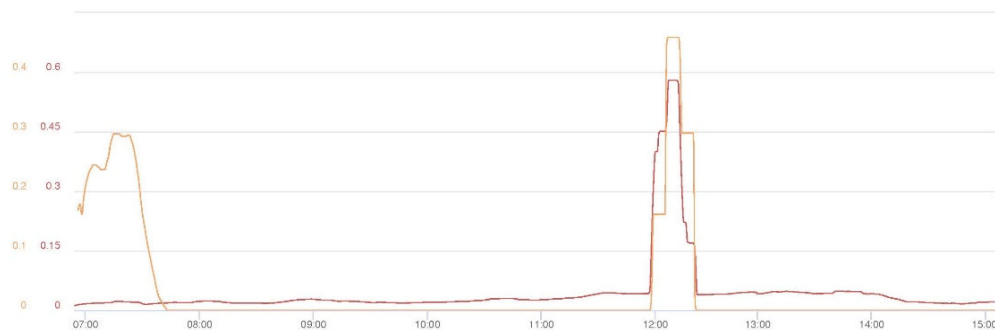
MIN	AVG	MAX
0	0	11.184

© Netronix 2022

Name Bud Site MID (FA04057)
S/N 0B446167
Description FA04057
Location 2 55th Ave, Long Island
City, NY 11101, USA

Downwind CAMP Station Data

Wed, 26th of Oct 2022, 0:00:00 – 16:55:58
(GMT-05:00) Eastern Time (US & Canada)



Mass Conc. Total mg/m³ AVG 15m

mg/m³

DustTrak-8530

RS232C

MIN	AVG	MAX
0.012	0.0456	0.58

VOC ppm AVG 15m ppm

ppm

miniRAE 3000

RS232C

MIN	AVG	MAX
0	0	0.4586

© Netronix 2022

Name Bud DOWNWIND
(FA3254)
S/N 0B312021
Description FA03254
Location 52-37 2nd St, Queens,
NY 11101, USA

Site Photographs

Photograph 1 - The landscaping contractor exporting soil to CENJ.




Photograph 2 - The landscapers grading gravel in WC-25, view facing northeast.



Photograph 3 - Civetta pouring concrete in WC-03, view facing west.



	Daily Activity Report					
	Newtown Creek Bud Site - North Block					
	2-10 54th Avenue, Long Island City, New York					
	BCP No. C241248					
General Site Information						
Date:	Thursday, October 27, 2022					
Weather:	44-65 °F Clear					
Wind Direction/Speed:	N @ 9 mph					
AKRF Personnel on Site:	Hank Westly					
AKRF Equipment on Site:	Mini RAE 3000 Photoionization Detector [(PID) x1], TSI Sidepak Aerosol Monitor, CAMP - 10.6 electron Volt (eV) Mini RAE 3000 PID x 2 and TSI 8530 DustTrak II x 2.					
	None.					
Contractor Information						
Contracting Company	Main Personnel			Equipment		
Bud North GC LLC	Chris Steinmann			None.		
Civetta Cousins JV (Civetta)	Eric Weiberth			Payloader, Track loader, Excavator (x6)		
Description and Location of Work Activities Performed						
Civetta installed SSDS piping and geofoam foundation blocks in grid WC-04 and continued pouring concrete. Civetta imported three loads of 3/4" stone from Braen Stone.						
The landscaping contractor graded gravel and poured concrete in WC-25 and WC-24. The landscaping contractor imported five loads of 57 stone from Astro Aggregates. Eastern Environmental installed three groundwater monitoring wells at various points throughout the site.						
Site Soil Disposal Tracking Information						
Destination Facility	Daily Trucks	Total Trucks	Daily Approx. Cubic Yds	Total Approx. Cubic Yds	Total Site Loads	Total Approximate Cubic Yards
Clean Earth Carteret	0	60	0	1,200	866	17,320
Clean Earth North Jersey	0	203	0	4,060		
Bayshore Management LLC	0	603	0	12,060		
ACUA	-	-	0	0		
-	-	-	0	0		
Total	0	866	0	17,320	866	17,320
CAMP Air Monitoring Results						
CAMP Station	UPWIND			DOWNWIND		
Odors:	None.			None.		
VOC Action Level Exceedance(s):	None.			None.		
Particulate Action Level Exceedance(s):	None.			None.		
Maximum VOC Level (ppm):	0.6637			0.2939		
Maximum Particulate Level (mg/m³):	0.0229			0.0913		
Comments: None.						
Additional Information						
Planned Work Activity for Following Day/Week:	Continue off-site disposal of soil and concrete debris, excavation, installation of SSDS. Continue with import of clean backfill and 3/4" stone.					
Comments:						

Site Map



LEGEND

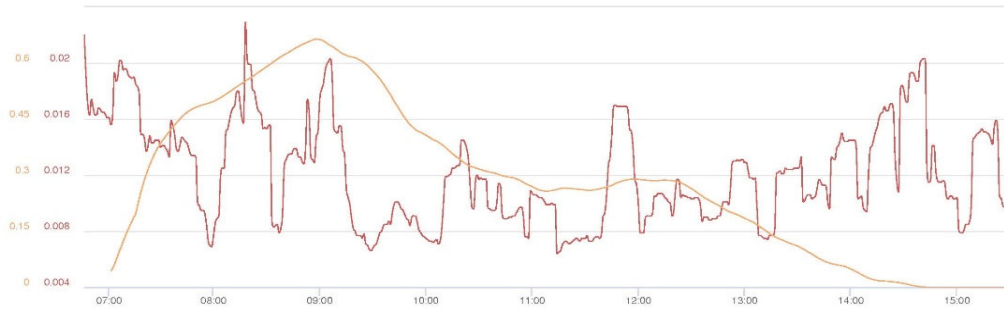
- BCP SITE BOUNDARY
- WASTE CLASS GRID
- REMEDIAL EXCAVATION TO 2 FEET BELOW GROUNDWATER (APPROX. 50 FEET BY 75 FEET, UP TO 11 FEET DEEP) FOR REMOVAL OF SOURCE MATERIAL
- REMEDIAL EXCAVATION TO APPROXIMATELY 2 FEET BELOW EXISTING GRADE
- BOTTOM DOCUMENTATION SAMPLE SOURCE AREA REMOVAL
- SIDEWALL DOCUMENTATION SAMPLE SOURCE AREA REMOVAL
- CONFIMATORY DOCUMENTATION SAMPLE LOCATION



Map Source:
NYCDOCP (NYC Dept. of City Planning) GIS data

Upwind CAMP Station Data

Thu, 27th of Oct 2022, 0:00:00 – 16:24:22
(GMT-05:00) Eastern Time (US & Canada)



© Netronix 2022

Name Bud Site UPWIND
(FA04921)
S/N 0B266651
Description (FA04921)
Location 52-37 2nd St, Queens,
NY 11101, USA

Downwind CAMP Station Data

Thu, 27th of Oct 2022, 0:00:00 – 16:24:58
(GMT-05:00) Eastern Time (US & Canada)



© Netronix 2022

Name Bud Site MID (FA04057)
S/N 0B446167
Description FA04057
Location 2 55th Ave, Long Island
City, NY 11101, USA

Site Photographs

Photograph 1 -
Eastern
Environmental
drilling MW-01,
view facing west.




Photograph 2 - The
landscaping
contractor
spreading concrete
in WC-25, view
facing northeast.



Photograph 3 -
Civetta importing
3/4" stone, view
facing northwest.



	Daily Activity Report					
	Newtown Creek Bud Site - North Block					
	2-10 54th Avenue, Long Island City, New York					
	BCP No. C241248					
General Site Information						
Date:	Friday, October 28, 2022					
Weather:	44-56 °F Clear					
Wind Direction/Speed:	NE @ 12 mph					
AKRF Personnel on Site:	Hank Westly					
AKRF Equipment on Site:	Mini RAE 3000 Photoionization Detector [(PID) x1], TSI Sidepak Aerosol Monitor, CAMP - 10.6 electron Volt (eV) Mini RAE 3000 PID x 2 and TSI 8530 DustTrak II x 2.					
	None.					
Contractor Information						
Contracting Company	Main Personnel			Equipment		
Bud North GC LLC	Chris Steinmann			None.		
Civetta Cousins JV (Civetta)	Eric Weiberth			Payloader, Track loader, Excavator (x6)		
Description and Location of Work Activities Performed						
Civetta installed SSDS piping and geofoam foundation blocks in grid WC-04 and continued pouring concrete. Civetta imported one load of 3/4" stone from IRRC.						
The landscaping contractor graded gravel and poured concrete in WC-25 and WC-24. The landscaping contractor imported two loads of 57 stone from Astro Agregates and five loads of fill from IRRC.						
Site Soil Disposal Tracking Information						
Destination Facility	Daily Trucks	Total Trucks	Daily Approx. Cubic Yds	Total Approx. Cubic Yds	Total Site Loads	Total Approximate Cubic Yards
Clean Earth Carteret	0	60	0	1,200	866	17,320
Clean Earth North Jersey	0	203	0	4,060		
Bayshore Management LLC	0	603	0	12,060		
ACUA	-	-	0	0		
-	-	-	0	0		
Total	0	866	0	17,320	866	17,320
CAMP Air Monitoring Results						
CAMP Station	UPWIND			DOWNWIND		
Odors:	None.			None.		
VOC Action Level Exceedance(s):	None.			None.		
Particulate Action Level Exceedance(s):	None.			None.		
Maximum VOC Level (ppm):	0.0685			0.2141		
Maximum Particulate Level (mg/m³):	0.041			0.096		
Comments: None.						
Additional Information						
Planned Work Activity for Following Day/Week:	Continue off-site disposal of soil and concrete debris, excavation, installation of SSDS. Continue with import of clean backfill and 3/4" stone.					
Comments:						

Site Map



LEGEND

- BCP SITE BOUNDARY
- WASTE CLASS GRID
- REMEDIAL EXCAVATION TO 2 FEET BELOW GROUNDWATER (APPROX. 50 FEET BY 75 FEET, UP TO 11 FEET DEEP) FOR REMOVAL OF SOURCE MATERIAL
- REMEDIAL EXCAVATION TO APPROXIMATELY 2 FEET BELOW EXISTING GRADE
- BOTTOM DOCUMENTATION SAMPLE SOURCE AREA REMOVAL
- SIDEWALL DOCUMENTATION SAMPLE SOURCE AREA REMOVAL
- CONFIMATORY DOCUMENTATION SAMPLE LOCATION



Map Source:
NYCDOCP (NYC Dept. of City Planning) GIS data

Upwind CAMP Station Data

Fri, 28th of Oct 2022, 0:00:00 – 18:06:08
(GMT-05:00) Eastern Time (US & Canada)



Mass Conc. Total mg/m³ AVG 15m
mg/m³
DustTrak-8530
RS232(C)

MIN	AVG	MAX
0.0065	0.0132	0.041

VOC ppm AVG 15m ppm
miniRAE 3000
RS232(A)

MIN	AVG	MAX
0	0	0.0685

© Netronix 2022

Name Bud Site UPWIND
(FA04921)
S/N 0B266651
Description (FA04921)
Location 2 55th Ave, Queens, NY
11101, USA

Downwind CAMP Station Data

Fri, 28th of Oct 2022, 0:00:00 – 18:06:47
(GMT-05:00) Eastern Time (US & Canada)



Mass Conc. Total mg/m³ AVG 15m
mg/m³
DustTrak-8530
RS232(C)

MIN	AVG	MAX
0.0046	0.0207	0.096

VOC ppm AVG 15m ppm
miniRAE 3000
RS232(A)

MIN	AVG	MAX
0	0.1347	0.2141

© Netronix 2022

Name Bud Site MID (FA04057)
S/N 0B446167
Description FA04057
Location 2 55th Ave, Long Island
City, NY 11101, USA

Site Photographs

Photograph 1 - The landscaping contractor importing approved fill, view facing northeast.




Photograph 2 - The landscaping contractor spreading concrete in WC-25, view facing northeast.

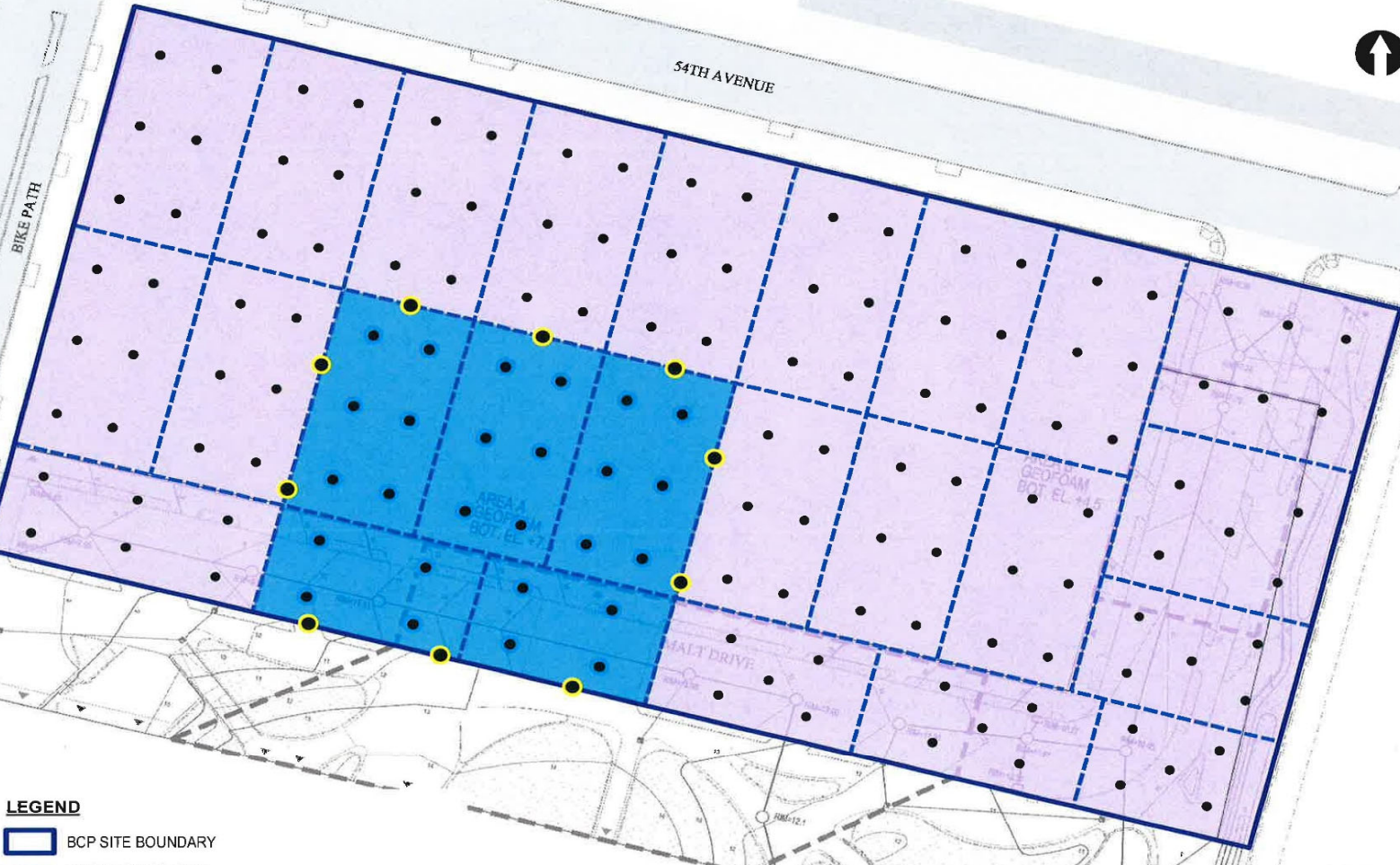


Photograph 3 - Site overview, view facing northeast.



	Daily Activity Report					
	Newtown Creek Bud Site - North Block					
	2-10 54th Avenue, Long Island City, New York					
	BCP No. C241248					
General Site Information						
Date:	Monday, October 31, 2022					
Weather:	53-65 °F Clear					
Wind Direction/Speed:	NE @ 6 mph					
AKRF Personnel on Site:	Hank Westly					
AKRF Equipment on Site:	Mini RAE 3000 Photoionization Detector [(PID) x1], TSI Sidepak Aerosol Monitor, CAMP - 10.6 electron Volt (eV) Mini RAE 3000 PID x 2 and TSI 8530 DustTrak II x 2.					
	None.					
Contractor Information						
Contracting Company	Main Personnel				Equipment	
Bud North GC LLC	Chris Steinmann				None.	
Civetta Cousins JV (Civetta)	Eric Weiberth				Payloader, Track loader, Excavator (x6)	
Description and Location of Work Activities Performed						
Civetta installed SSDS piping and geofoam foundation blocks in grid WC-03 and continued pouring concrete. Civetta imported three loads of 3/4" stone from IRRC.						
The landscaping contractor graded gravel in WC-20. The landscaping contractor imported six loads of 57 stone from Astro Aggregates.						
Site Soil Disposal Tracking Information						
Destination Facility	Daily Trucks	Total Trucks	Daily Approx. Cubic Yds	Total Approx. Cubic Yds	Total Site Loads	Total Approximate Cubic Yards
Clean Earth Carteret	0	60	0	1,200	866	17,320
Clean Earth North Jersey	0	203	0	4,060		
Bayshore Management LLC	0	603	0	12,060		
ACUA	-	-	0	0		
-	-	-	0	0		
Total	0	866	0	17,320	866	17,320
CAMP Air Monitoring Results						
CAMP Station	UPWIND				DOWNWIND	
Odors:	None.				None.	
VOC Action Level Exceedance(s):	None.				None.	
Particulate Action Level Exceedance(s):	None.				None.	
Maximum VOC Level (ppm):	1.5827				0.5627	
Maximum Particulate Level (mg/m³):	0.0834				0.2965	
Comments: There was one exceedence of the .150mg/m³ 15 min particulate avg at the downwind CAMP station. This was caused by Civetta using an air compressor to clean the site. This activity was stopped and no more exceedences were noted for the rest of the day.						
Additional Information						
Planned Work Activity for Following Day/Week:	Continue off-site disposal of soil and concrete debris, excavation, installation of SSDS. Continue with import of clean backfill and 3/4" stone.					
Comments:						

Site Map



LEGEND

- BCP SITE BOUNDARY
- WASTE CLASS GRID
- REMEDIAL EXCAVATION TO 2 FEET BELOW GROUNDWATER (APPROX. 50 FEET BY 75 FEET, UP TO 11 FEET DEEP) FOR REMOVAL OF SOURCE MATERIAL
- REMEDIAL EXCAVATION TO APPROXIMATELY 2 FEET BELOW EXISTING GRADE
- BOTTOM DOCUMENTATION SAMPLE SOURCE AREA REMOVAL
- SIDEWALL DOCUMENTATION SAMPLE SOURCE AREA REMOVAL
- CONFIRMATORY DOCUMENTATION SAMPLE LOCATION



Map Source:
NYC DCP (NYC Dept. of City Planning) GIS data

Upwind CAMP Station Data

Mon, 31st of Oct 2022, 0:00:00 – 16:54:55
(GMT-05:00) Eastern Time (US & Canada)



Mass Conc. Total mg/m³ AVG 15m
mg/m³
DustTrak-8530
RS232(G)

MIN	AVG	MAX
0.0111	0.0582	0.2965

VOC ppm AVG 15m ppm
miniRAE 3000
RS232(A)

MIN	AVG	MAX
0	0.4816	0.5627

© Netronix 2022

Name Bud Site MID (FA04057)
S/N 0B446167
Description FA04057
Location 2 55th Ave, Long Island
City, NY 11101, USA

Downwind CAMP Station Data

Mon, 31st of Oct 2022, 0:00:00 – 16:54:05
(GMT-05:00) Eastern Time (US & Canada)



Mass Conc. Total mg/m³ AVG 15m
mg/m³
DustTrak-8530
RS232(G)

MIN	AVG	MAX
0.0205	0.0459	0.0834

VOC ppm AVG 15m ppm
miniRAE 3000
RS232(A)

MIN	AVG	MAX
0	0	1.5827

© Netronix 2022

Name Bud Site UPWIND
(FA04921)
S/N 0B266651
Description (FA04921)
Location 52-37 2nd St, Queens,
NY 11101, USA

Site Photographs

Photograph 1 -
Civetta pouring
concrete in WC-03.



Photograph 2 - The
landscaping
contractor
regrading in WC-20.



Photograph 3 - The
landscaping
contractor
importing gravel to
WC-20.

