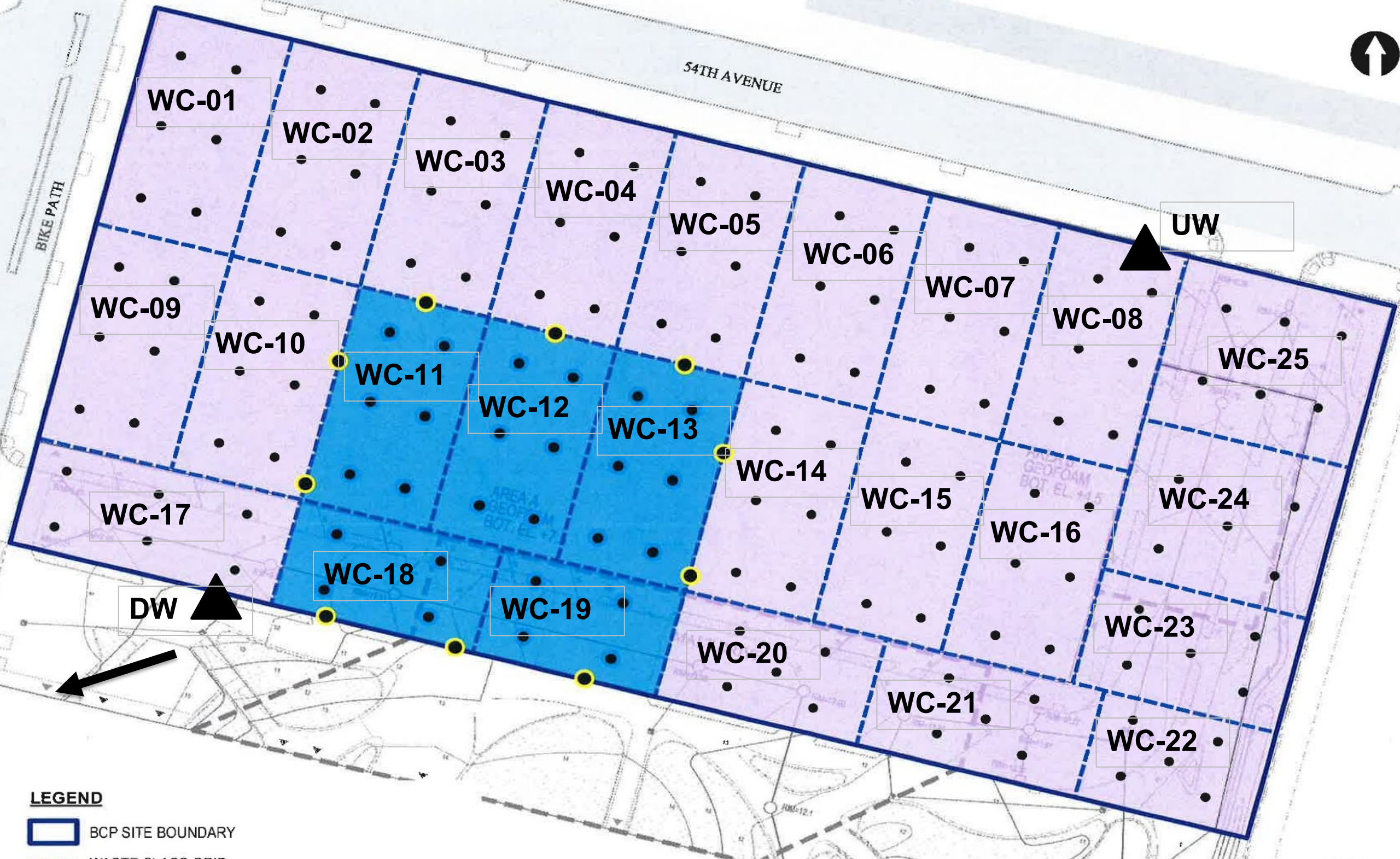
	<b>Daily Activity Report</b>					
	Newtown Creek Bud Site - North Block					
	2-10 54th Avenue, Long Island City, New York					
	BCP No. C241248					
General Site Information						
Date:	Tuesday, August 22, 2023					
Weather:	67-82 °F, Overcast and Rain					
Wind Direction/Speed:	W @ 9 mph					
AKRF Personnel on Site:	Mackenzie Miller					
AKRF Equipment on Site:	Mini RAE 3000 Photoionization Detector [(PID) x1], TSI Sidepak Aerosol Monitor					
Contractor Information						
Contracting Company	Main Personnel			Equipment		
Bud North GC LLC	Chris Steinmann			None.		
Steven Dubner Landscaping	Luca Toscano			Small Excavator, hand tools.		
Description and Location of Work Activities Performed						
Dubner imported 57 Stone from Astro Aggregates in Masepth, NY to the Site and spread it over the existing composite cover in grids WC-22 through WC-25.						
Dubner imported and stockpiled Naturcycle planting soil from 110 Sand Company in Melville, NY and spread it over the existing composite cover in landscaping areas in grids WC-22 through WC25.						
Site Soil Disposal Tracking Information						
Destination Facility	Daily Trucks	Total Trucks	Daily Approx. Cubic Yds	Total Approx. Cubic Yds	Total Site Loads	Total Approximate Cubic Yards
Clean Earth Carteret	0	79	0	1,580	912	18,240
Clean Earth North Jersey	0	213	0	4,260		
Bayshore Management LLC	0	620	0	12,400		
ACUA	-	-	0	0		
-	-	-	0	0		
Total	0	912	0	18,240	912	18,240
CAMP Air Monitoring Results						
CAMP Station	UPWIND			DOWNWIND		
Odors:	None.			None.		
VOC Action Level Exceedance(s):	None.			None.		
Particulate Action Level Exceedance(s):	N/A			N/A		
Maximum VOC Level (ppm):	N/A			N/A		
Maximum Particulate Level (mg/m³):	N/A			N/A		
Comments: AKRF performed roving air monitoring during import and spreading activities. No odors were detected and particulates were not observed at or near the Site boundaries.						
Additional Information						
Planned Work Activity for Following Day/Week:	Construction of building superstructure.					
Comments:						



# Site Map



## LEGEND

- BCP SITE BOUNDARY
- WASTE CLASS GRID
- REMEDIAL EXCAVATION TO 2 FEET BELOW GROUNDWATER (APPROX. 50 FEET BY 75 FEET, UP TO 11 FEET DEEP) FOR REMOVAL OF SOURCE MATERIAL
- REMEDIAL EXCAVATION TO APPROXIMATELY 2 FEET BELOW EXISTING GRADE
- BOTTOM DOCUMENTATION SAMPLE SOURCE AREA REMOVAL
- SIDEWALL DOCUMENTATION SAMPLE SOURCE AREA REMOVAL
- CONFIMATORY DOCUMENTATION SAMPLE LOCATION



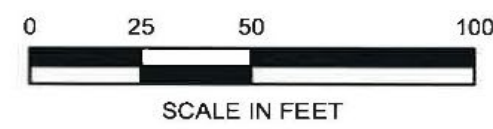
WORK AREA



CAMP  
STATION  
LOCATION



WIND  
DIRECTION



Map Source:  
NYC DCP (NYC Dept. of City Planning) GIS data

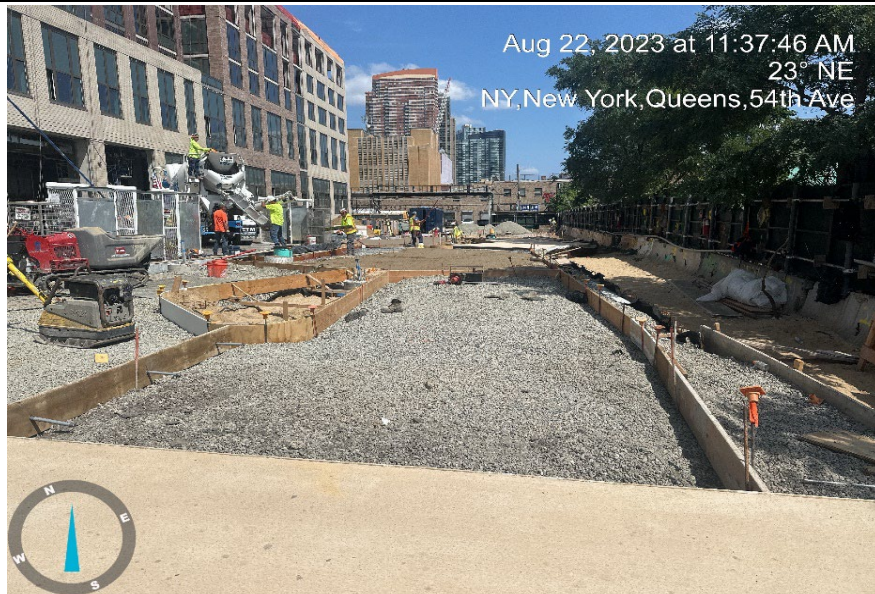



## Site Photographs

Photograph 1 - The 57 stone composite cover in the eastern portion of the Site, view facing north.



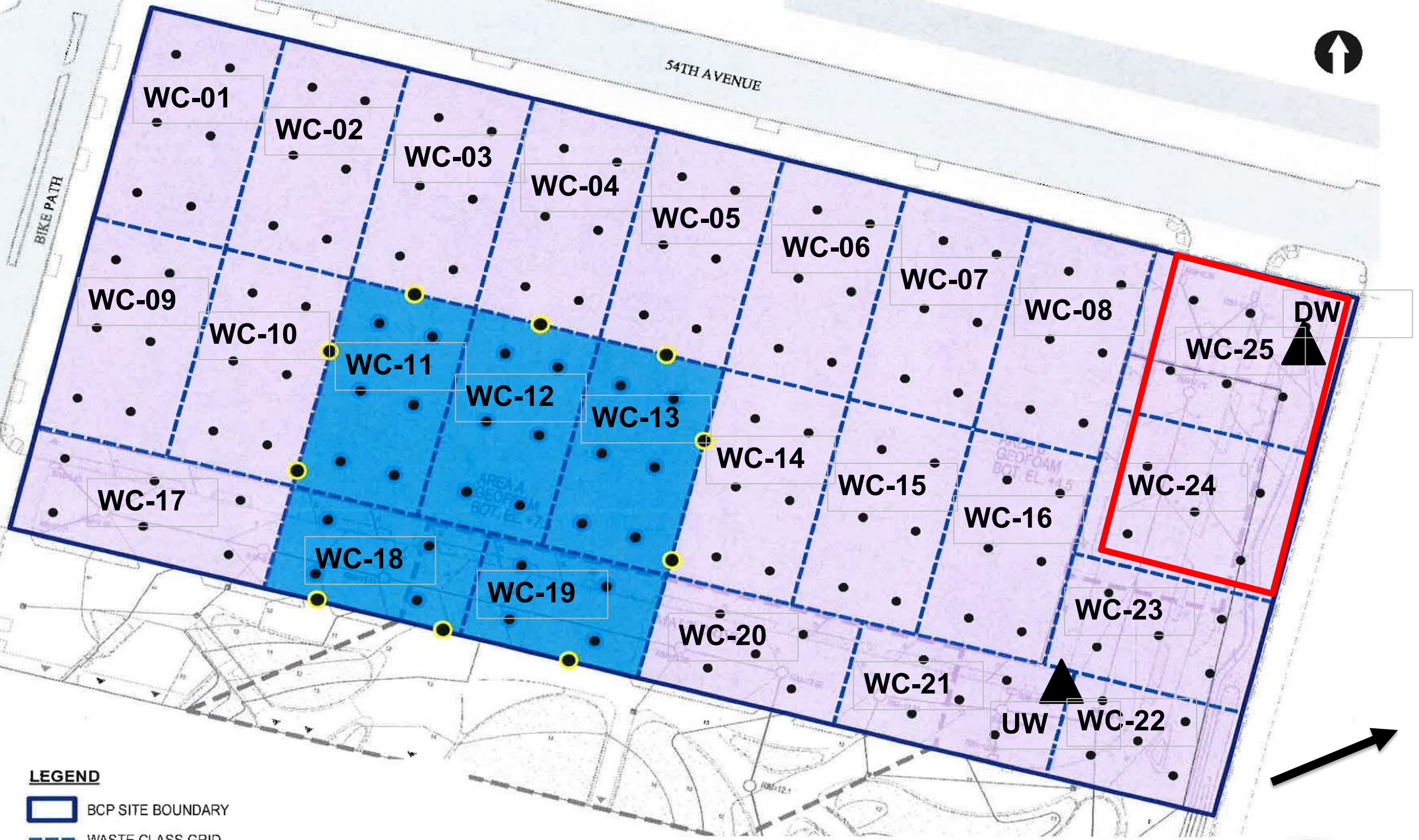
Photograph 2 - A Dubner laborer spreading landscaping soil.



	<b>Daily Activity Report</b>					
	Newtown Creek Bud Site - North Block					
	2-10 54th Avenue, Long Island City, New York					
	BCP No. C241248					
General Site Information						
Date:	Wednesday, August 30, 2023					
Weather:	70-86 °F, Overcast and Rain					
Wind Direction/Speed:	SW @ 8 mph					
AKRF Personnel on Site:	Mackenzie Miller					
AKRF Equipment on Site:	Mini RAE 3000 Photoionization Detector [(PID) x1], TSI Sidepak Aerosol Monitor					
Contractor Information						
Contracting Company	Main Personnel			Equipment		
Bud North GC LLC	Chris Steinmann			None.		
Steven Dubner Landscaping	Luca Toscano			Small Excavator, hand tools.		
Description and Location of Work Activities Performed						
<div>- Dubner poured concrete for the sidewalks in grids WC-24 and WC-25.</div> <div>- Dubner excavated in discrete locations for installation of a permitter fence.</div>						
Site Soil Disposal Tracking Information						
Destination Facility	Daily Trucks	Total Trucks	Daily Approx. Cubic Yds	Total Approx. Cubic Yds	Total Site Loads	Total Approximate Cubic Yards
Clean Earth Carteret	0	79	0	1,580	912	18,240
Clean Earth North Jersey	0	213	0	4,260		
Bayshore Management LLC	0	620	0	12,400		
ACUA	-	-	0	0		
-	-	-	0	0		
Total	0	912	0	18,240	912	18,240
CAMP Air Monitoring Results						
CAMP Station	UPWIND			DOWNWIND		
Odors:	None.			None.		
VOC Action Level Exceedance(s):	None.			None.		
Particulate Action Level Exceedance(s):	N/A			N/A		
Maximum VOC Level (ppm):	0.0452			0.0		
Maximum Particulate Level (mg/m³):	0.0587			0.0601		
Comments: Air monitoring was suspended from 09:15 AM to 11:15 AM due to rainy conditions.						
Additional Information						
Planned Work Activity for Following Day/Week:	Construction of building superstructure.					
Comments:						



# Site Map



## LEGEND

- BCP SITE BOUNDARY
- WASTE CLASS GRID
- REMEDIAL EXCAVATION TO 2 FEET BELOW GROUNDWATER (APPROX. 50 FEET BY 75 FEET, UP TO 11 FEET DEEP) FOR REMOVAL OF SOURCE MATERIAL
- REMEDIAL EXCAVATION TO APPROXIMATELY 2 FEET BELOW EXISTING GRADE
- BOTTOM DOCUMENTATION SAMPLE SOURCE AREA REMOVAL
- SIDEWALL DOCUMENTATION SAMPLE SOURCE AREA REMOVAL
- CONFIMATORY DOCUMENTATION SAMPLE LOCATION



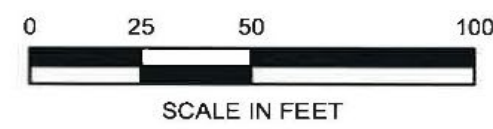
WORK AREA



CAMP STATION LOCATION



WIND DIRECTION



Map Source:  
NYC DCP (NYC Dept. of City Planning) GIS data



## Upwind CAMP Station Data

08/30/2023 0:00:05 – 08/31/2023 0:00:00  
(GMT-05:00) Eastern Time (US & Canada)



Mass Conc. Total mg/m³ AVG 15m  
mg/m³  
DustTrak-8530  
RS232(C)

MIN	AVG	MAX
0.0123	0.0228	0.0587

VOC ppm AVG 15m ppm  
miniRAE 3000  
RS232(B)

MIN	AVG	MAX
0	0	0.0452

© Netronix 2023

Name Bud Upwind  
S/N 0B28B647  
Description FA04946  
Location 2 55th Ave, Queens, NY  
11101, USA

## Downwind CAMP Station Data

08/30/2023 0:00:16 – 08/31/2023 0:00:00  
(GMT-05:00) Eastern Time (US & Canada)



Mass Conc. Total mg/m³ AVG 15m  
mg/m³  
DustTrak-8530  
RS232(C)

MIN	AVG	MAX
0.0119	0.0267	0.0601

VOC ppm AVG 15m ppm  
miniRAE 3000  
RS232(B)

MIN	AVG	MAX
0	0	0

© Netronix 2023

Name Bud Downwind  
S/N 0B327931  
Description FA04786  
Location 2 55th Ave, Queens, NY  
11101, USA

## Site Photographs

Photograph 1 - A small excavation through the composite cover in WC-24, facing west.




Photograph 2 - A small excavation through the composite cover in WC-24, facing southwest.



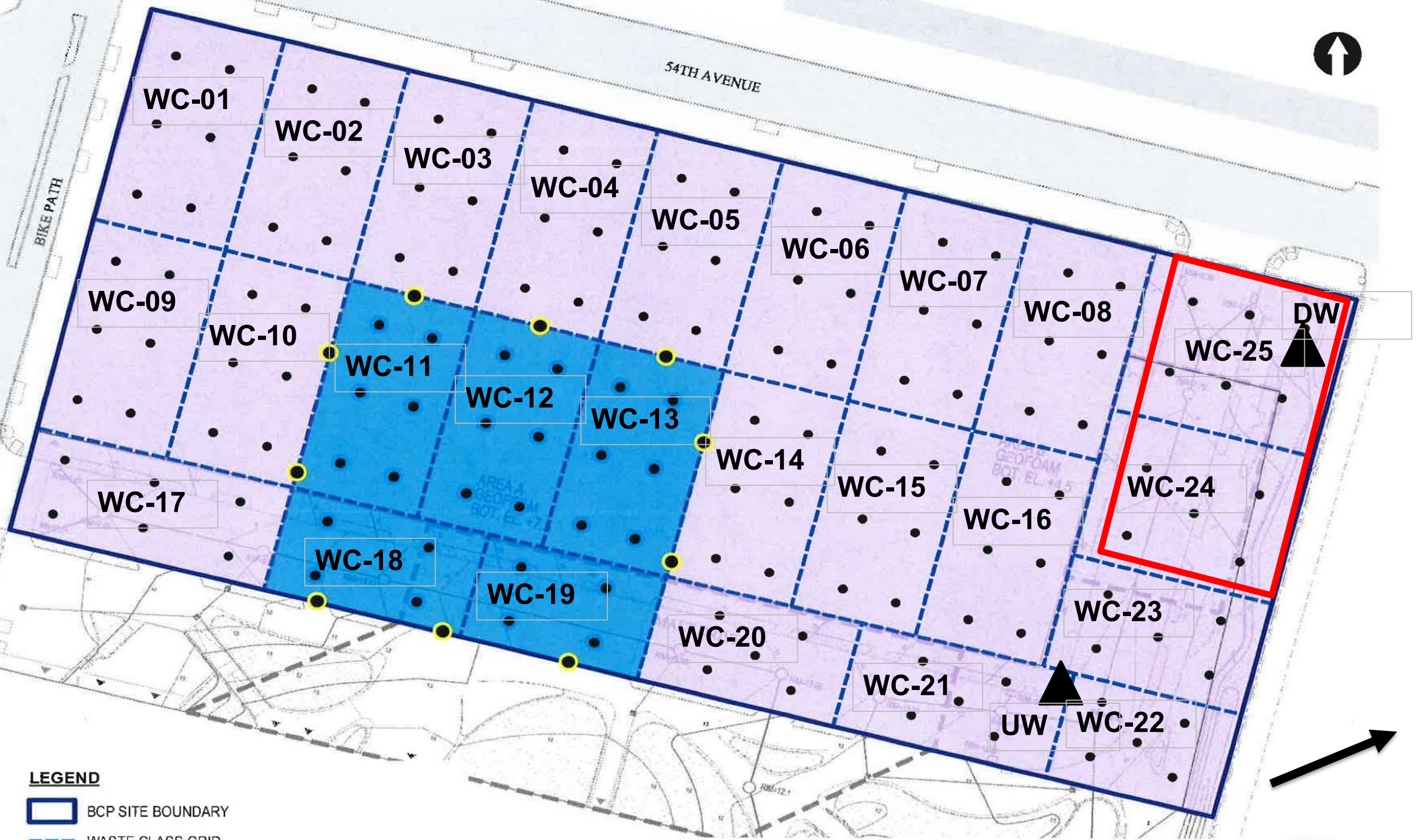
Photograph 3 - Stockpiled soil covered with plastic sheeting at the end of the day, view facing east.



	<b>Daily Activity Report</b>					
	Newtown Creek Bud Site - North Block					
	2-10 54th Avenue, Long Island City, New York					
	BCP No. C241248					
General Site Information						
Date:	Thursday, August 31, 2023					
Weather:	64-77 °F, Cloudy					
Wind Direction/Speed:	N @ 10 mph					
AKRF Personnel on Site:	Chad Walters					
AKRF Equipment on Site:	Mini RAE 3000 Photoionization Detector [(PID) x1], TSI Sidepak Aerosol Monitor					
Contractor Information						
Contracting Company	Main Personnel			Equipment		
Bud North GC LLC	Chris Steinmann			None.		
Steven Dubner Landscaping	Luca Toscano			Small Excavator, hand tools.		
Description and Location of Work Activities Performed						
<p>- Dubner excavated in discrete locations for installation of a perimeter fence.</p> <p>- Dubner stockpiling excavated soil [WC-24 (0-4)/WC-25 (0-4)] for future off-site disposal. Excavated material was covered with plastic sheeting.</p>						
Site Soil Disposal Tracking Information						
Destination Facility	Daily Trucks	Total Trucks	Daily Approx. Cubic Yds	Total Approx. Cubic Yds	Total Site Loads	Total Approximate Cubic Yards
Clean Earth Carteret	0	79	0	1,580	912	18,240
Clean Earth North Jersey	0	213	0	4,260		
Bayshore Management LLC	0	620	0	12,400		
ACUA	-	-	0	0		
-	-	-	0	0		
Total	0	912	0	18,240	912	18,240
CAMP Air Monitoring Results						
CAMP Station	UPWIND			DOWNWIND		
Odors:	None.			None.		
VOC Action Level Exceedance(s):	None.			None.		
Particulate Action Level Exceedance(s):	N/A			Yes (1)		
Maximum VOC Level (ppm):	0.0007			0.0		
Maximum Particulate Level (mg/m³):	0.0339			0.429		
Comments: Elevated levels of particulates (>0.100 mg/m3 above background) were detected at the Downwind CAMP station from approximately 08:12 to 08:26 due to dust associated with high winds and the movement of building materials around the Site (not excavation for fence installation). Water was applied to the work area and particulate levels returned to background levels.						
Additional Information						
Planned Work Activity for Following Day/Week:	Construction of building superstructure.					
Comments:						



# Site Map



## LEGEND

- BCP SITE BOUNDARY
- WASTE CLASS GRID
- REMEDIAL EXCAVATION TO 2 FEET BELOW GROUNDWATER (APPROX. 50 FEET BY 75 FEET, UP TO 11 FEET DEEP) FOR REMOVAL OF SOURCE MATERIAL
- REMEDIAL EXCAVATION TO APPROXIMATELY 2 FEET BELOW EXISTING GRADE
- BOTTOM DOCUMENTATION SAMPLE SOURCE AREA REMOVAL
- SIDEWALL DOCUMENTATION SAMPLE SOURCE AREA REMOVAL
- CONFIMATORY DOCUMENTATION SAMPLE LOCATION



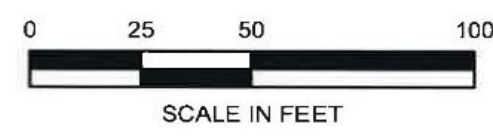
WORK AREA



CAMP STATION LOCATION



WIND DIRECTION

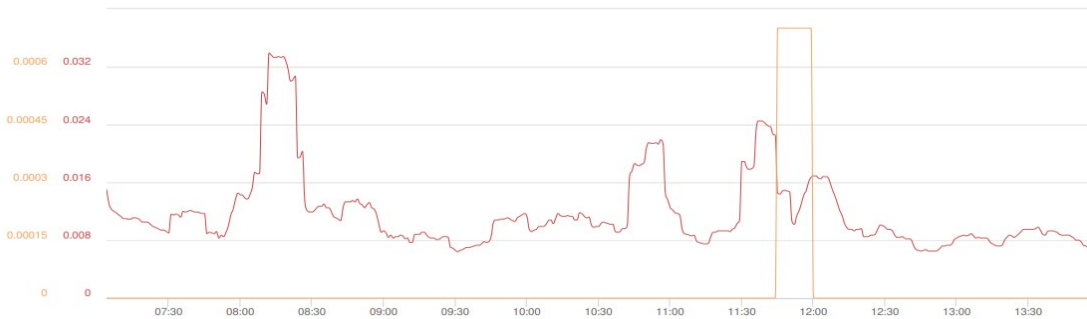


Map Source:  
NYC DCP (NYC Dept. of City Planning) GIS data



## Upwind CAMP Station Data

Thu, 31st of Aug 2023, 0:00:00 – 18:47:17  
(GMT-05:00) Eastern Time (US & Canada)



**Mass Conc. Total mg/m³ AVG 15m**  
mg/m³  
DustTrak-8530  
RS232(C)

MIN	AVG	MAX
0.0064	0.0118	0.0339

**VOC ppm AVG 15m** ppm  
miniRAE 3000  
RS232(B)

MIN	AVG	MAX
0	0	0.0007

**Name** Bud Upwind  
**S/N** 0B288647  
**Description** FA04946  
**Location** 2 55th Ave, Queens, NY  
11101, USA

© Netronix 2023

## Downwind CAMP Station Data

Thu, 31st of Aug 2023, 0:00:00 – 18:47:27  
(GMT-05:00) Eastern Time (US & Canada)



**Mass Conc. Total mg/m³ AVG 15m**  
mg/m³  
DustTrak-8530  
RS232(C)

MIN	AVG	MAX
0.0081	0.0318	0.429

**VOC ppm AVG 15m** ppm  
miniRAE 3000  
RS232(A)

MIN	AVG	MAX
0	0	0

**Name** Bud Downwind  
**S/N** 0B327931  
**Description** FA04786  
**Location** 2 55th Ave, Queens, NY  
11101, USA

© Netronix 2023



## Site Photographs

Photograph 1 -  
Excavated material  
added to stockpile in  
WC-25, facing  
northwest.



Photograph 2 -  
General view of the  
work zone in WC-24,  
facing north.



Photograph 3 -  
Stockpiled soil covered  
with poly sheeting,  
view facing  
southeast.

