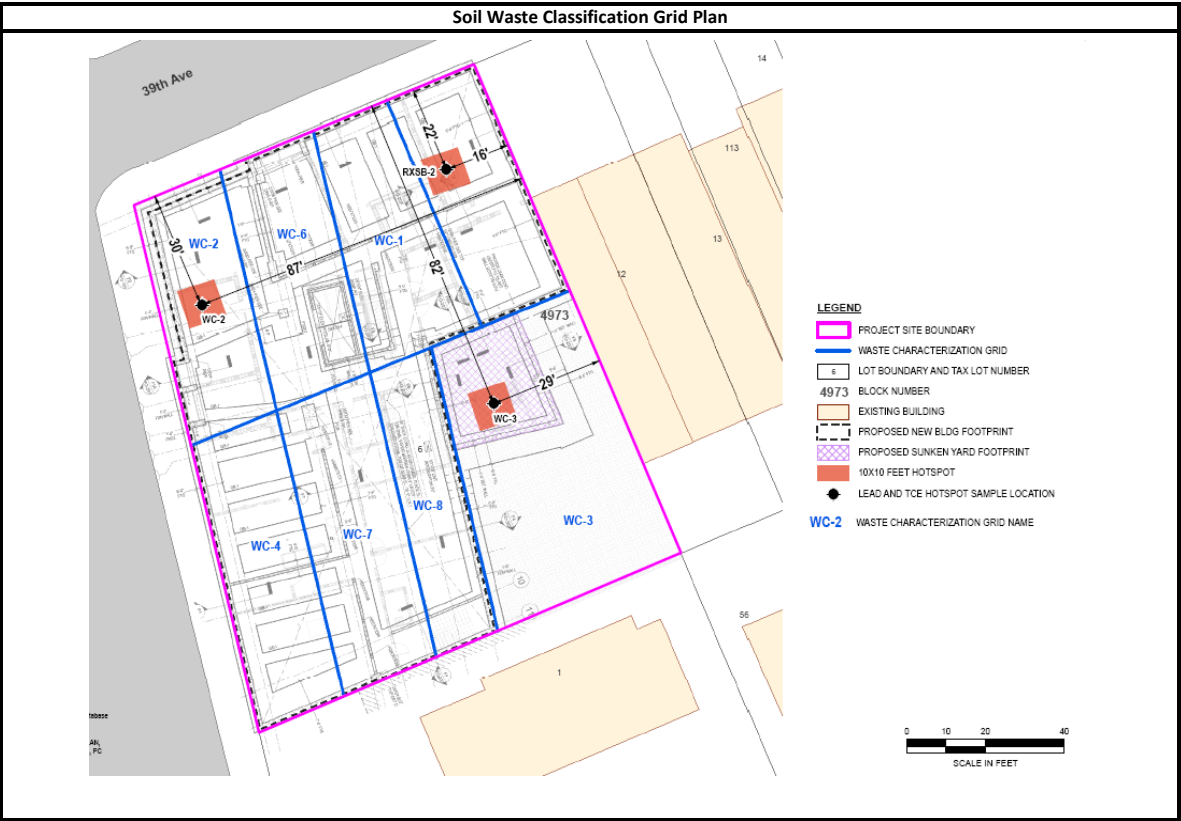
	Daily Activity Report					
	Magnolia Gardens					
	39-03 College Point Boulevard, Queens, NY					
	BCP Site No. C241273					
General Site Information						
Date:	Monday, May 13, 2024					
Weather:	46-67°F, Sunny					
Wind Direction/Speed (towards):	SW @ 5 mph					
AKRF Personnel on Site:	Madelyn Fleming					
AKRF Equipment on Site:	Mini RAE 3000 Photoionization Detectors [(PID) x3] and DustTrak Aerosol Monitors (x3)					
Visitors:	None					
Contractor Information						
Subcontractor						
Archstone Builders LLC				General Contractor (GC)		
Capstone Contracting Corp.				Foundation Contractor		
Description and Location of Work Activities Performed						
Excavation and grading occurred in Grids WC-3, WC-4, and WC-5. As part of the SOE, installed lagging and worked on underpinning in Grids WC-3, WC-4 and WC-5.						
Poured concrete for SOE heel blocks in Grid WC-5.						
Material Disposal Tracking Information						
Destination Facility/Material Type	Daily Trucks	Total Trucks	Daily Approx. Cubic Yds	Total Approx. Cubic Yds	Total Site Loads	Total Approximate Cubic Yards
Clean Earth of North Jersey (CENJ)/(haz lead soil)	0	7	0	140	232	4,640
Clean Earth of North Jersey (CENJ)/(haz TCE soil)	0	6	0	120		
Bayshore Soil Management, LLC (Bayshore)	0	190	0	3,800		
River Front Recycling (C&D)	0	13	0	260		
Clean Earth of Carteret (CEC)	0	16	0	320		
Import Material Tracking Information						
Origin Facility	Daily Trucks	Total Trucks	Daily Tonnage	Total Tonnage	Total Site Loads	Total Quantity (tons)
Vulcan, Wantage or Hamburg Quarry	0	7	0.00	156.15	7	156.15
CAMP Air Monitoring Results						
CAMP Station	UPWIND			DOWNWIND		
Odors:	None			None		
VOC Action Level Exceedance(s):	None			None		
Particulate Action Level Exceedance(s):	None			None		
Maximum VOC Level (ppm) 15-min avg:	0.1705			0.0910		
Maximum Particulate Level (mg/m³) 15-min avg:	0.0801			0.0580		
CAMP Response Actions: None						
Additional Information						
Planned Work Activity for Next Day/Week:	Continued export of soil offsite for disposal.					
Comments:	None.					

Soil Waste Classification Grid Plan



Upwind CAMP Station Data

Mon, 13th of May 2024, 0:00:00 – 21:15:27
(GMT-05:00) Eastern Time (US & Canada)



Mass Conc. Total mg/m³ AVG 15m mg/m³ DustTrak-8530 REC3000			VOC ppm AVG 15m ppm memRAE 3000 REC3000		
MIN	AVG	MAX	MIN	AVG	MAX
0.0281	0.0454	0.0801	0	0	0.1788

Name College Pt. Upwind
S/N 2B341306
Description FA06010
Location 3752 College Point Blvd,
Queens, NY 11354, USA

© NetScionx 2024

Mon, 13th of May 2024, 0:00:00 – 21:16:46
(GMT-05:00) Eastern Time (US & Canada)



Mass Conc. Total mg/m³ AVG 15m mg/m³ DustTrak-8530 REC3000			VOC ppm AVG 15m ppm memRAE 3000 REC3000		
MIN	AVG	MAX	MIN	AVG	MAX
0.0271	0.0441	0.058	0	0.001	0.091

Name College Pt. Downwind
S/N 2B346173
Description FA06008
Location 13314 39th Ave,
Flushing, NY 11354,
USA

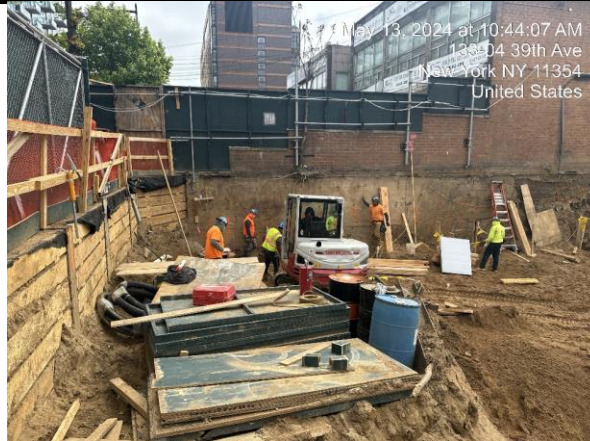
© NetScionx 2024

Site Photographs

Photograph 1 -
Lagging installation in
Grid WC-4.



Photograph 2 -
Excavation for SOE
work in Grid WC-5.



Photograph 3 -
Grading in Grid WC-3.

