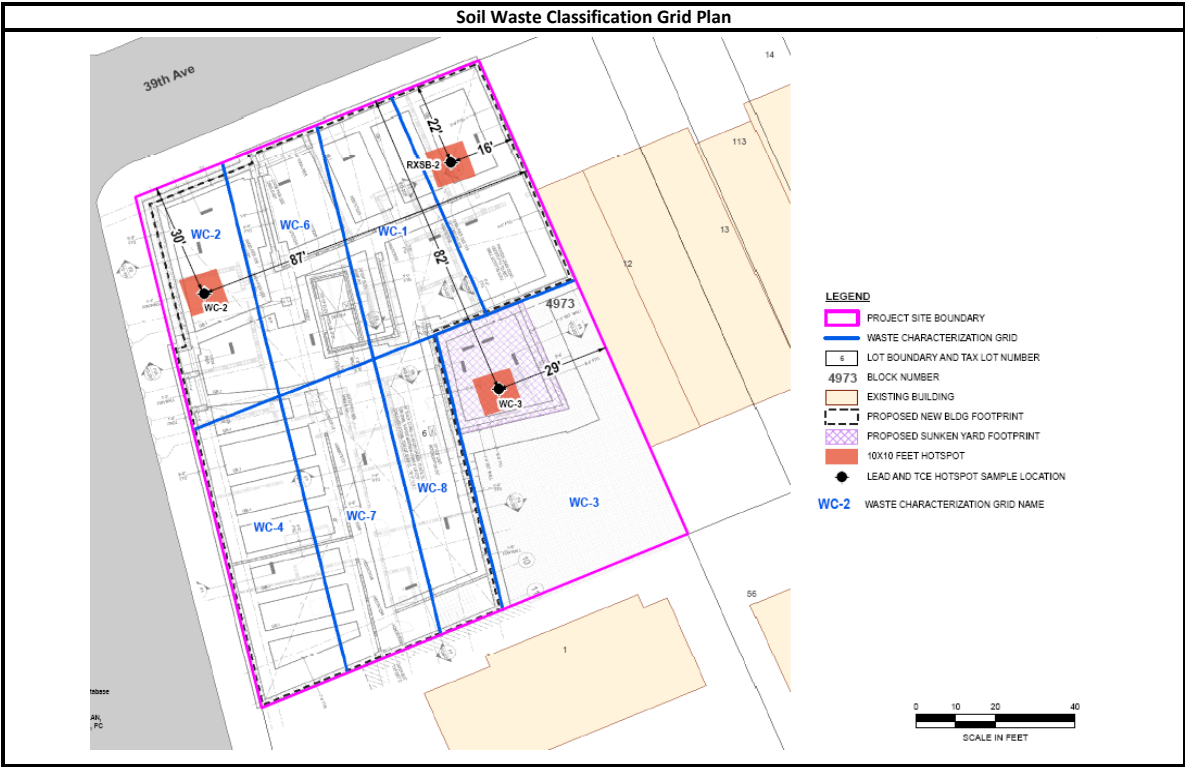
	Daily Activity Report					
	Magnolia Gardens					
	39-03 College Point Boulevard, Queens, NY					
	BCP Site No. C241273					
General Site Information						
Date:	Wednesday, May 22, 2024					
Weather:	62-81°F, Sunny					
Wind Direction/Speed (towards):	SW @ 6 mph					
AKRF Personnel on Site:	Madelyn Fleming					
AKRF Equipment on Site:	Mini RAE 3000 Photoionization Detectors [(PID) x3] and DustTrak Aerosol Monitors (x3)					
Visitors:	Control Point Associates					
Contractor Information						
Subcontractor						
Archstone Builders LLC				General Contractor (GC)		
Capstone Contracting Corp.				Foundation Contractor		
Control Point Associates (CPA)				NYS-licensed Surveyor		
Description and Location of Work Activities Performed						
Excavation and grading occurred in Grids WC-4, WC-5, WC-7, and WC-8. As part of the SOE, installed lagging, tiebacks, and worked on underpinning in Grids WC-4, WC-5, WC-7, and WC-8. No soil stockpiles were generated.						
Previously collected post-excavation soil endpoint samples (EP-12_15_20240521 and EP-13_15_20240520) were surveyed by NYS-licensed surveyor.						
Approximately 800 cubic yards of non-hazardous soil from Grids WC-4, WC-7, and WC-8 (8-16') were exported to the Bayshore Soil Management facility located in New Jersey. Most of the trucks remained on the trucking pad and tires did not come in contact with site soil. A couple of truck tires needed to be washed and the wash water was collected in the collection pit.						
Material Disposal Tracking Information						
Destination Facility/Material Type	Daily Trucks	Total Trucks	Daily Approx. Cubic Yds	Total Approx. Cubic Yds	Total Site Loads	Total Approximate Cubic Yards
Clean Earth of North Jersey (CENJ)/(haz lead soil)	0	7	0	140	319	6,380
Clean Earth of North Jersey (CENJ)/(haz TCE soil)	0	6	0	120		
Bayshore Soil Management, LLC (Bayshore)	40	277	800	5,540		
River Front Recycling (C&D)	0	13	0	260		
Clean Earth of Carteret (CEC)	0	16	0	320		
Import Material Tracking Information						
Origin Facility	Daily Trucks	Total Trucks	Daily Tonnage	Total Tonnage	Total Site Loads	Total Quantity (tons)
Vulcan, Wantage or Hamburg Quarry	0	9	0.00	203.07	9	203.07
CAMP Air Monitoring Results						
CAMP Station	UPWIND			DOWNWIND		
Odors:	None			None		
VOC Action Level Exceedance(s):	None			None		
Particulate Action Level Exceedance(s):	None			None		
Maximum VOC Level (ppm) 15-min avg:	0.1198			0.0000		
Maximum Particulate Level (mg/m³) 15-min avg:	0.1812			0.0521		
CAMP Response Actions: None						
Additional Information						
Planned Work Activity for Next Day/Week:	Continued export of soil offsite for disposal and SOE work.					
Comments:	None.					

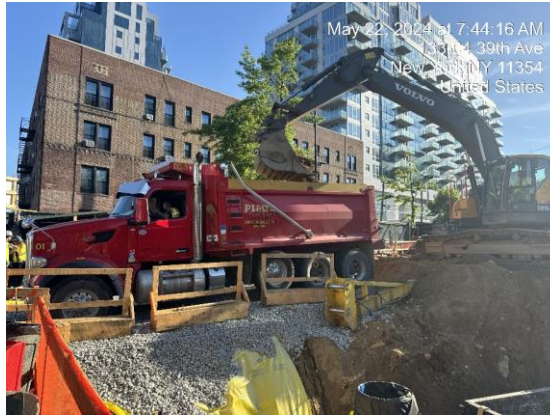
Soil Waste Classification Grid Plan



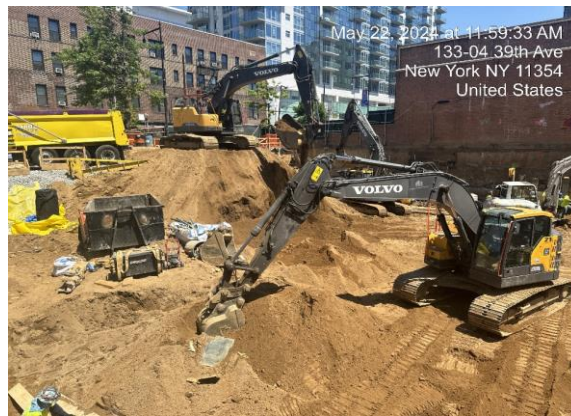


Site Photographs

Photograph 1 -
Non-hazardous soil
being loaded on to
trucks for export to
Bayshore.



Photograph 2 -
Excavation in Grid WC-
4.



Photograph 3 -
Lagging installation
for SOE in Grid WC-4.

