

## **MSR 004: MONTHLY STATUS REPORT, 10-16 Beach 19<sup>th</sup> Street (C241276): BCP Work Activities for November 2025**

From: Adam Atkinson, Gallagher Bassett Technical Services (GBTS) adam\_atkinson@gbtpa.com

To: Erick Bower, NYSDEC erick.bower@dec.ny.gov  
Scarlett McLaughlin, NYSDOH scarlett.mclaughlin@health.ny.gov  
Michele Dolan, NYSDOH michele.dolan@health.ny.gov  
Jane O'Connell, NYSDEC jane.oconnell@dec.ny.gov  
Scott Deyette, NYSDEC scott.deyette@dec.ny.gov  
William Bennett, NYSDOH william.bennett@dec.ny.gov

CC: Richard Hooker, GBTS richard\_hooker@gbtpa.com  
Erick Salazar, GBTS erick\_salazar@gbtpa.com  
Caroline Clark, GBTS caroline\_clark@gbtpa.com  
Jeff Fox, Foxy Development LLC jfox@foxymanagement.com  
Joanna Choiniska, Foxy Development LLC joanna@foxymanagement.com  
Tristan Nadal, Points Five LLC tnadal@pointsfive.com  
Dale Desnoyers, Allen & Desnoyers LLP dale@allendesnoyers.com

RE: Monthly Status Report for 10-16 Beach 19<sup>th</sup> Street BCP Site, Far Rockaway, Queens

Fieldwork activities have been performed in accordance with the NYSDEC-approved Remedial Investigation Work Plan (RIWP, November 2024) and the Supplemental Remedial Investigation Work Plan (SRIWP, October 2025), under the supervision of qualified personnel from Gallagher Bassett Technical Services (GBTS).

### **A) Overview of Remedial Services Completed During Reporting Period:**

The following RIWP and SRIWP activities were performed during the reporting period:

- In-situ infiltration testing was completed by GTA Engineering personnel (reporting directly to the developer) on November 3, 2025. Infiltration testing was performed within the existing 4" diameter steel well casings using potable water supplied by municipal facilities.
- GBTS placed data loggers (Heron "dipperLog", programmed to record temperature and pressure measurements from the water column in 15 minute intervals) in monitoring wells MW-04 (Grid A1), MW-06 (Grid D1), and MW-09 (Grid A3) on November 19, 2025. The data loggers were retrieved on November 21, 2025 (approximately 48 hours later) and groundwater elevation measurements were evaluated to identify potential tidal impacts.

Temperature and pressure measurements from the water column were recorded 15-minute intervals over a period of approximately 48 hours. The datasets were utilized to calculate groundwater depth in each well over time, which were then compared to tidal data from the same period to assess whether tidal influence was impacting the on-Site groundwater table. Findings were reported in the Revised Remedial Investigation Report (RIR) on November 26, 2025. A Grid Map depicting the well locations and groundwater elevation contours is attached.

**B) Locations of Work and Quantities of Material Imported and Exported:**

The tidal survey was performed at MW-04 (Grid A1), MW-06 (Grid D1), and MW-09 (Grid A3). No material was imported or exported.

**C) Sampling Events:**

No samples were collected.

**D) General Compliance with Governing Documents:**

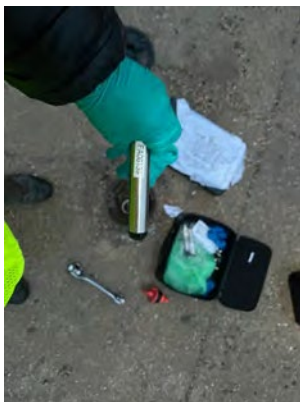
There were no significant deviations from the RIWP or SRIWP, or encountered problems. No complaints were received. CAMP implementation was limited to VOC monitoring with a handheld PID (dust monitoring was not conducted as no ground-intrusive fieldwork activities were performed). No exceedances of VOCs were recorded.

**E) Upcoming Work**

The Revised Draft Remedial Investigation Report is currently under NYSDEC review. The anticipated project schedule is as follows:

Task	Schedule
Submission of Draft Remedial Action Work Plan (RAWP)	August 12, 2025
Submission of Revised Draft RIR	November 26, 2025
NYSDEC approval of RIR	December 2025
Submission of Final RAWP	December 2025-January 2026
NYSDEC issues Decision Document	February-March 2026
RAWP Implementation	April 2026-June 2027
Submit draft Site Management Plan (as required)	August 1, 2027 ( <i>last date for submission</i> )
Submit draft Final Engineering Report	October 1, 2027 ( <i>last date for submission</i> )
NYSDEC issues Certificate of Completion	December 2027

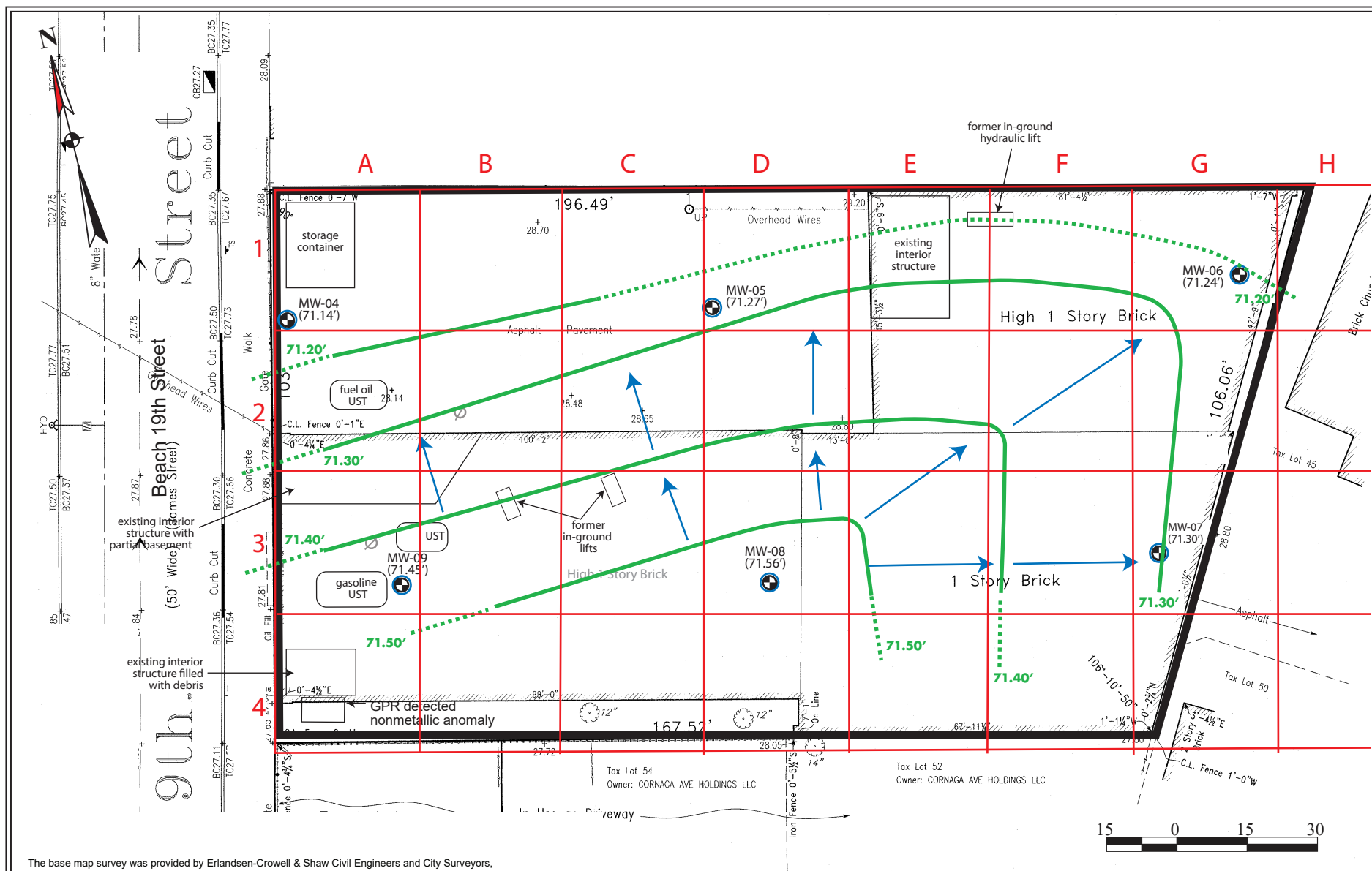
**F) Representative Site Photographs:**



Typical dipperLog setup (MW-09, Grid A3)



Typical retrieval of dipperLog (MW-04, Grid A1)



The base map survey was provided by Erlandsen-Crowell & Shaw Civil Engineers and City Surveyors, date April 7, 2025. Sample locations and relevant Site features were measured and triangulated from fixed points shown on the base survey and are accurate to the nearest 0.5-foot.

### Grid Map

BCP ID: C241276  
10-16 Beach 19th Street  
Borough of Queens, New York

### Legend:

- subject property border
- groundwater contour line
- RI monitoring well location
- direction of groundwater flow

File: 21003-0004

November 2025

Scale as shown

Attachment