



# FACT SHEET

## Brownfield Cleanup Program

**Former General Motors Assembly Plant  
Site Number C360070  
Sleepy Hollow, NY**

**March 2007**

### **Draft Interim Remedial Measure Proposal Available for Public Comment; Public Meeting Announced**

The New York State Department of Environmental Conservation (NYSDEC) requests public comments as it reviews a proposed Interim Remedial Measure (IRM) to address contamination related to the Former General Motors North Tarrytown Assembly Plant Site located in the Village of Sleepy Hollow, Westchester County (see map for the location of the site). The proposed IRM is described in the draft Interim Remedial Measure Decision Document, prepared by NYSDEC.

NYSDEC previously accepted an application submitted by GM and Roseland to participate in the BCP. The application proposes that the site will be used for restricted residential purposes.

#### **Public Comments About the Draft IRM Proposal**

NYSDEC is accepting written public comments on the draft IRM Decision Document for 45 days, from **March 14, 2007** through **April 28, 2007**. The draft IRM Decision Document is available for public review at the document repositories identified in this fact sheet.

**Brownfield Cleanup Program:** New York's Brownfield Cleanup Program (BCP) encourages the voluntary cleanup of contaminated properties known as "brownfields" so that they can be reused and redeveloped. These uses include recreation, housing and business.

A **brownfield** is any real property that is difficult to reuse or redevelop because of the presence or potential presence of contamination.

For more information about the BCP, visit:  
[www.dec.state.ny.us/website/der/bcp](http://www.dec.state.ny.us/website/der/bcp)

#### **Public Meeting**

Wednesday March 28, 2007

**Sleepy Hollow Village Hall**

**28 Beekman Avenue**

**Sleepy Hollow, New York**

3:00 - 5:00 - Availability Session - Board of Trustees Room, 2<sup>nd</sup> Floor  
(project personnel available to answer individual's questions in an informal setting)

7:00 - Public Meeting - Columbia Hose Meeting Room, 2<sup>nd</sup> Floor

NYSDEC invites you to a public meeting to discuss the draft IRM proposal to address contamination at the Former General Motors North Tarrytown Assembly Plant Site.

**NOTE: the purpose of this meeting concerns site remediation, and not proposals for future redevelopment of the site**

Written comments should be submitted to:

Mr. James Moras  
New York State Dept. of Environmental Conservation  
625 Broadway  
Albany NY 12233-7013

#### **Highlights of the Draft IRM Decision Document**

The IRM proposal has several goals:

- 1) All areas containing contamination above cleanup goals will be addressed through a combination of source area removals and post-

IRM institutional controls and engineering controls (IC/ECs).

2) The IRM will protect public health and the environment by, to the extent practicable: a) removing the grossly contaminated soil present at the Site; b) eliminating the potential for off-site migration of residual contamination; c) eliminating the potential for exposure to soils and historic fill materials that exceed Soil Cleanup Objectives values; d) eliminating the potential for exposure to residual contamination in groundwater; e) eliminating the potential for intrusion of volatile organic compound (VOC) soil vapors and methane into indoor air spaces in future buildings.

3) The major elements of the IRM include:

- ▶ Lead Source Remediation: excavation and removal of more than 5,300 cubic yards (CY) historic fill containing the greatest mass of lead on the Site. The proposed IRM would remove concentrations of lead greater than ( $>$ ) 5,000 parts per million (ppm) above the water table and  $>10,000$  ppm below the water table to the extent practicable, within two separate areas of the Site (PAOC 7 & PAOC 29);
- ▶ Chromium and trichloroethene (TCE) Source Remediation: excavation and removal of approximately 3,600 CY of subsurface soil and concrete contaminated with chromium and TCE associated with an historic process pit (PAOC 47). Soil saturated with groundwater would be treated to oxidize (destroy) TCE in the vicinity of the excavation area;
- ▶ Petroleum Source Remediation at Former underground storage tank (UST): excavation of approximately 5,100 CY of petroleum-impacted soil associated with an underground storage tank for No.6 fuel oil that was last used during the 1920s. Soil saturated with groundwater would be treated to oxidize (destroy) petroleum compounds in the vicinity of the excavation area;
- ▶ Engineering and Institutional Controls: The site-wide engineering and institutional controls (EC/IC), including but not limited to the following, would be incorporated into one or more environmental easements to ensure the long-term integrity of these controls:
  - A demarcation barrier consisting of a geotextile fabric or a structural surface (e.g., concrete or asphalt) over soil or fill that does not meet applicable New York State cleanup guidance for the intended use of the Site;
  - A final barrier cap system throughout the entire Site consisting of either:
    - A 2-foot thick surface soil cover, meeting applicable residential use criteria, for open space, landscaped or naturally-vegetated areas
    - Pavement (or similar hard surfaces) over non-vegetated areas;
    - Permanent buildings or similar structures;
  - Mitigation measures, as necessary, to address potential for intrusion of methane into future indoor air space within the East Parcel and in the northern corner of the West Parcel;
  - Mitigation measures, as necessary, to address potential intrusion of volatile organic vapors into future indoor air space within the East and West Parcels;
  - Installation of additional monitoring wells, where necessary, and post-IRM groundwater monitoring to document that remedial action objectives are being achieved onsite and offsite;
  - Institutional controls implemented during and/or following Site development, to monitor and maintain the engineering controls, and provide a legal mechanism in the form of an environmental easement to ensure the long-term integrity of these controls.

The work will be performed by GM and Roseland with oversight by NYSDEC and the New York State Department of Health (NYSDOH).

**Next Steps**

NYSDEC will consider public comments when it completes its review, make any necessary revisions, if appropriate, and finalize the IRM Decision Document. NYSDOH must concur with the approval of the IRM Decision Document. The approved IRM Decision Document will be placed in the document repositories. When NYSDEC finalizes the IRM Decision Document, GM/Roseland may proceed with the design and construction of the IRM. It is estimated that design, construction and treatment activities will take about 6 - 8 months to complete.

From a technical standpoint, the remedial action proposed for the Former General Motors North Tarrytown Assembly Plant Site is relatively simple. NYSDEC has determined that site-specific technical plans that will be added will allow the IRM Scope of Work to serve as a Remedial Action Work Plan that will guide construction of the IRM.

NYSDEC will keep the public informed during the remediation of the Former General Motors North Tarrytown Assembly Plant Site .

**Background**

The Site is situated on the eastern shore of the Hudson River and occupies an area of approximately 96.2 acres within the Village of Sleepy Hollow. It comprises three, non-contiguous parcels: 1) West Parcel (approximately 66.2 acres); 2) East Parcel (approximately 28.3 acres); and 3) South Parcel (approximately 1.7 acres) (site map attached).

GM and Roseland initiated formal NYSDEC review of the Site environmental conditions in a Voluntary Cleanup Agreement (VCA), signed in November 2002. Between 2004 and 2005, the Site transitioned from the Voluntary Cleanup Program (VCP) to the Brownfield Cleanup Program (BCP). During the transition, separate Brownfield Cleanup Agreements (BCAs) were developed for the East and West Parcels (which includes the South Parcel). These agreements were signed in May 2005. The Hudson River is an offsite area of interest to the West Parcel.

Prior to GM's purchase of the West Parcel in 1914, the parcel was partially developed with urban fill consisting largely of coal cinders and various aggregate mixtures to extend the waterfront into a portion of the former Pocantico Bay. Industrial operations prior to GM's purchase included a brickyard, a percussion rock drill factory, and two facilities where gasoline and steam-powered automobiles were manufactured and assembled. GM demolished most of the early industrial buildings during the 1920s, filled in the remainder of Pocantico Bay, and constructed an automotive assembly complex that continued to expand and operate until operations ceased in 1996. In the East Parcel, purchased by GM in 1960 for parking, the former Village of North Tarrytown (now the Village of Sleepy Hollow) operated a small (less than 10 acres) municipal refuse and ash landfill during the 1920s and 1930s. The South Parcel, developed on a natural hillside, was previously residential.

A series of environmental investigations were performed by GM and Roseland to characterize the nature and extent of contamination associated with historical site development and former industrial operations. The most recent of these investigations is described in the Draft Preliminary Remedial

Investigation Report, December 2006 (Draft Preliminary RIR), which is available for public review to provide background information for the IRM Proposal.

## **FOR MORE INFORMATION**

### **Document Repositories**

Local document repositories have been established at the following locations to help the public to review important project documents. These documents include the Draft Preliminary RIR, Proposed IRM Scope of Work and the draft IRM Decision Document, as well as the May 2005 BCAs:

NYSDEC Region 3 Office  
21 South Putt Corners Road  
New Paltz, New York 12561  
(845) 256-3154  
Monday - Friday 8:30 am -  
4:45 pm  
(please call for an  
appointment)

Village Hall  
28 Beekman Avenue  
Sleepy Hollow, NY 10591  
914-366-5106 (Village  
Clerk's Office)

Warner Library  
121 North Broadway  
Tarrytown, NY 10591  
914-631-7734  
Mon.: 1:00-9:00  
Tues./Wed.: 10:00-6:00  
Thurs.: 1:00-9:00  
Fri.: 9:00-5:00  
Sat.: 10:00-5:00  
Sun.: 1:00-5:00

### **Who to Contact**

Comments and questions are welcome and should be directed as follows:

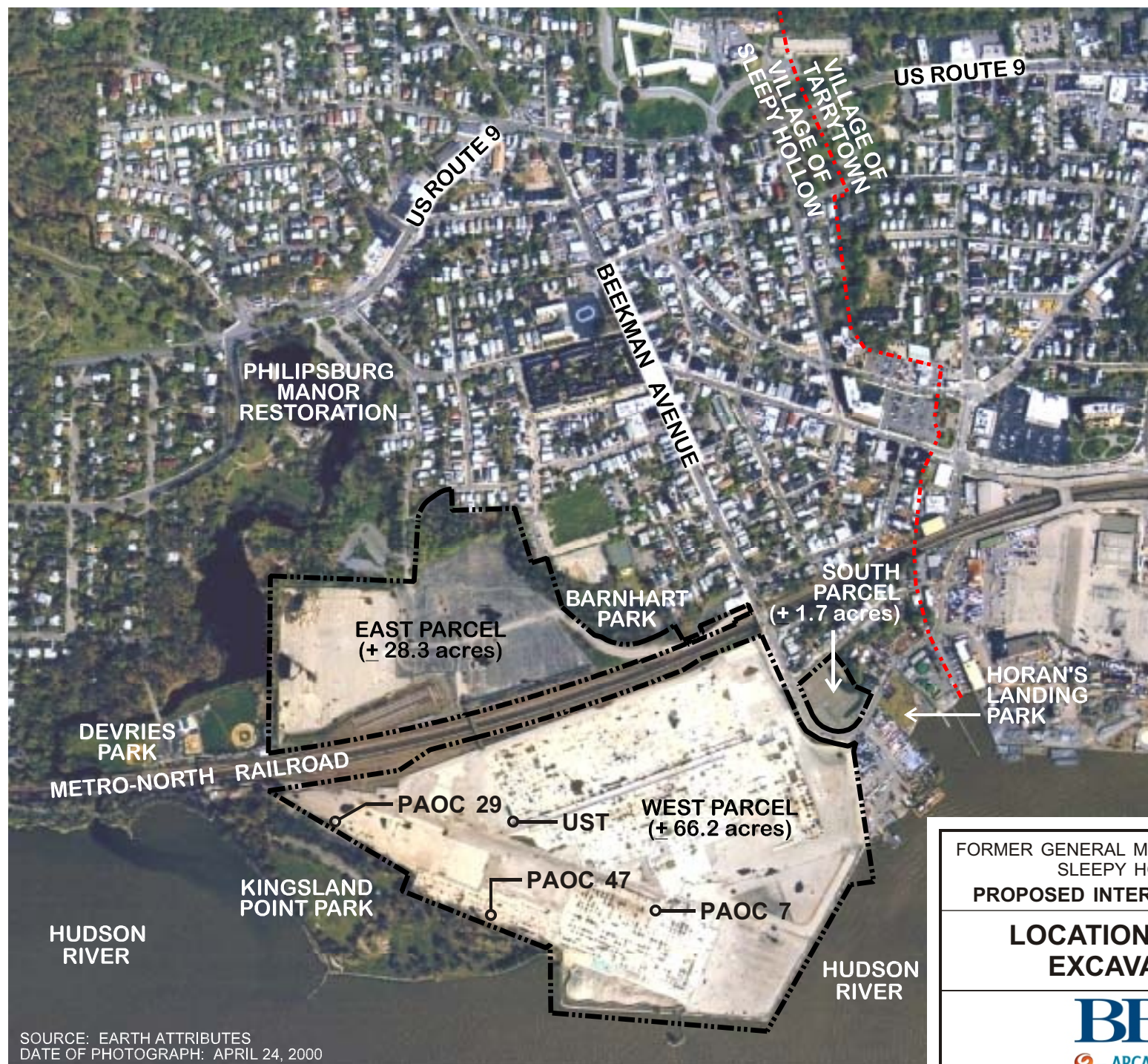
**Mr. James Moras**  
**Project Manager**  
NYSDEC  
625 Broadway, 12<sup>th</sup> Floor  
Albany, NY 12233-7013  
**(518) 402-9812**

For Citizen Participation  
questions, contact:  
**Mr. Michael Knipfing**  
**Citizen Participation**  
**Specialist**  
NYSDEC  
21 South Putt Corners Road  
New Paltz, NY 12561  
**(845) 256-3154**

For site-related health  
questions, please contact:  
**Mr. Joseph Crua**  
**Public Health Specialist**  
NYSDOH  
547 River Street  
Troy, NY 12180  
**1 (800) 458-1158, Ext. 27890**

Project information is also available on the NYSDEC website, at:  
**<http://www.dec.state.ny.us/website/der/projects/c360070.html>**





SOURCE: EARTH ATTRIBUTES  
DATE OF PHOTOGRAPH: APRIL 24, 2000



**LEGEND:**

— · — · — SITE BOUNDARY

- - - - - TOWN LINE

**REFERENCE:**  
FIGURE FROM DEIS FOR LIGHTHOUSE  
LANDING AT SLEEPY HOLLOW,  
NOVEMBER 2004, PREPARED BY  
DIVNEY TUNG SCHWALBE.

FORMER GENERAL MOTORS ASSEMBLY PLANT SITE  
SLEEPY HOLLOW, NEW YORK  
**PROPOSED INTERIM REMEDIAL MEASURES**

**LOCATION OF PROPOSED  
EXCAVATION AREAS**



**FIGURE  
1**