

(Fact Sheet Begins Next)

## Act Now to Continue Receiving Information About This Site!

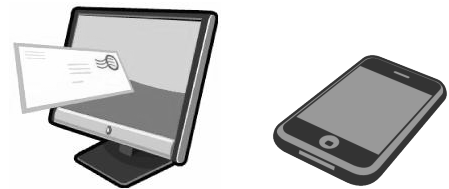
DEC's Division of Environmental Remediation (DER) now distributes information about contaminated sites *electronically by email*.

If you would like to continue to receive information about the contaminated site featured in this fact sheet:

**You must sign up for the DER email listserv:**

[www.dec.ny.gov/chemical/61092.html](http://www.dec.ny.gov/chemical/61092.html)

DER cannot register your email address - only the email address owner can do so. If you already have signed up for the listserv for the county in which the site is located, you need do nothing.



### Why You Should Go “Paperless”:

- Get site information faster and share it easily;
- Receive information about all sites in a chosen county - read what you want, delete the rest;
- It helps the environment and stretches your tax dollars.

**If “paperless” is not an option for you**, call or write to the DER project manager identified in this fact sheet. Indicate that you need to receive paper copies of fact sheets through the Postal Service. Include the site name in your correspondence. The option to receive paper is available to individuals only. Groups, organizations, businesses, and government entities are assumed to have email access.



Department of  
Environmental  
Conservation

# FACT SHEET

## State Superfund Program

Schmuckler's Dry Cleaners –  
Off Site  
Multiple locations surrounding:  
358-364 North Avenue  
New Rochelle, Westchester Co.

**SITE No. C360088A**  
**NYSDEC REGION 3**

**February 2024**

### Where to Find Information

Access project documents through the DECinfo Locator and at these location(s):  
<https://www.dec.ny.gov/data/DecDocs/C360088A/>

**New Rochelle Public Library**  
1 Liberty Plaza  
New Rochelle, NY 10801  
Call for hours: (914) 632-7878

**NYSDEC, Region 3 Office**  
21 South Putt Corners Road  
New Paltz, NY 12561  
Call in advance: (845) 256-3033

### Who to Contact

Comments and questions are welcome and should be directed as follows:

**Project-Related Questions**  
Mark Domaracki, Project Manager  
NYSDEC  
625 Broadway  
Albany, NY 12233  
(518) 402-9832  
[mark.domaracki@dec.ny.gov](mailto:mark.domaracki@dec.ny.gov)

**Project-Related Health Questions**  
Mark Sergott, Project Manager  
NYSDOH  
Empire State Plaza  
Corning Tower, Room 1787  
Albany, NY 12237  
(518) 402-7860  
[beci@health.ny.gov](mailto:beci@health.ny.gov)

For more information about New York's State Superfund Program, visit:  
[www.dec.ny.gov/chemical/8439.html](http://www.dec.ny.gov/chemical/8439.html)

### Investigation to Begin at State Superfund Site

The NYS Department of Environmental Conservation (NYSDEC) will soon begin a detailed environmental study at multiple off-site locations surrounding the Schmuckler's Dry Cleaner Off-site ("site") located near 358-364 North Avenue, New Rochelle, Westchester County. Please see the map for the site location.

**Investigation Work Plan:** The draft investigation work plan, called a "Remedial Investigation Work Plan (RIWP)," was developed under New York's State Superfund Program. Schmuckler's Dry Cleaner Off-site site is listed as a Class "A" site which is not on the State Registry of Inactive Hazardous Waste Sites (list of State Superfund sites). A Class A classification is assigned to a non-registry site in any remedial program where work is underway and not yet complete. This off-site investigation seeks to determine the extent and impact of contaminant migration from beneath the Schmuckler's Dry Cleaner site.

- Access the Draft RIWP and other project documents online through the DECinfo Locator: <https://www.dec.ny.gov/data/DecDocs/C360088A/>.
- Documents also are available at the location(s) identified at left under "Where to Find Information."

**Highlights of the Off-Site Investigation:** The off-site investigation will define the nature and extent of contamination in soil vapor and groundwater and any other parts of the environment that may be affected from the Schmuckler's Dry Cleaner site (C360088).

Past investigations in the area have determined chlorinated solvent and petroleum constituent contamination exists at the Schmuckler's Dry Cleaner property and has the potential to impact the surrounding properties. Tetrachloroethene (PCE), trichloroethene (TCE) and their byproducts are present in the subsurface beneath the Schmuckler's Dry Cleaner property. PCE is a contaminant often associated with dry cleaning operations and in the manufacture of metal parts. Benzene, Toluene, Ethylbenzene, and Xylene (BTEX) and other volatile organic compounds (VOCs) associated with petroleum products are also present beneath the Schmuckler's property.

Key components of the off-site investigation work include:

- Collecting soil vapor, sub-slab soil vapor and indoor air samples from buildings surrounding the Schmuckler's property;
- Installing and sampling shallow/deep ground water wells to monitor off-site impacts.

# STATE SUPERFUND PROGRAM

**Next Steps:** The information collected during the investigation will be summarized in a report. After the site investigation is complete, NYSDEC will conduct a "Feasibility Study." This study uses information developed during the site investigation to develop and evaluate potential ways to clean up contamination related to the site. The information collected during the site investigation may also support the conclusion that no action, or no further action, is needed to address site-related contamination. NYSDEC will then develop a draft cleanup plan, called a "Proposed Remedial Action Plan." This plan describes the remedy preferred by NYSDEC, or, if warranted, a proposal for no action or no further action.

The draft cleanup plan explains the decision that led to the preferred remedy by discussing each alternative and the reasons for choosing or rejecting it. The goal of the plan will be to ensure the protection of public health and the environment. NYSDEC will announce the availability of the draft cleanup plan in a future factsheet and will present it to the public for its review and comment during a 30-day comment period and at a public meeting.

**Site Description:** This is the off-site component to Schmuckler's Dry Cleaners site which is located in an urban area at 358-364 North Avenue in New Rochelle, Westchester County.

This off-site investigation covers approximately one city block, encompassing surrounding buildings and is in the downgradient direction of groundwater flow, toward the south east.

Properties along North Avenue are predominantly zoned for commercial or mixed use, some maintaining residential apartments above. Commercial uses dominate areas within one block east and west of North Avenue with the exception of a multi-unit residential building immediately to the west of the site. Drinking water on-site is provided from a municipal source.

Additional site details, including environmental and health assessment summaries, are available on NYSDEC's Environmental Site Remediation Database (by entering the site ID, C360088A) at:

<https://www.dec.ny.gov/cfm/xtapps/derexternal/index.cfm?pageid=3>

**State Superfund Program:** New York's State Superfund Program (SSF) identifies and characterizes suspected inactive hazardous waste disposal sites. Sites that pose a significant threat to public health and/or the environment go through a process of investigation, evaluation, cleanup and monitoring.

NYSDEC attempts to identify parties responsible for site contamination before committing State funds for investigation and cleanup.

For more information about the SSF, visit:

<https://www.dec.ny.gov/chemical/8439.html>

---

*We encourage you to share this fact sheet with neighbors and tenants, and/or post this fact sheet in a prominent area of your building for others to see.*

---

### Stay Informed With DEC Delivers

Sign up to receive site updates by email:

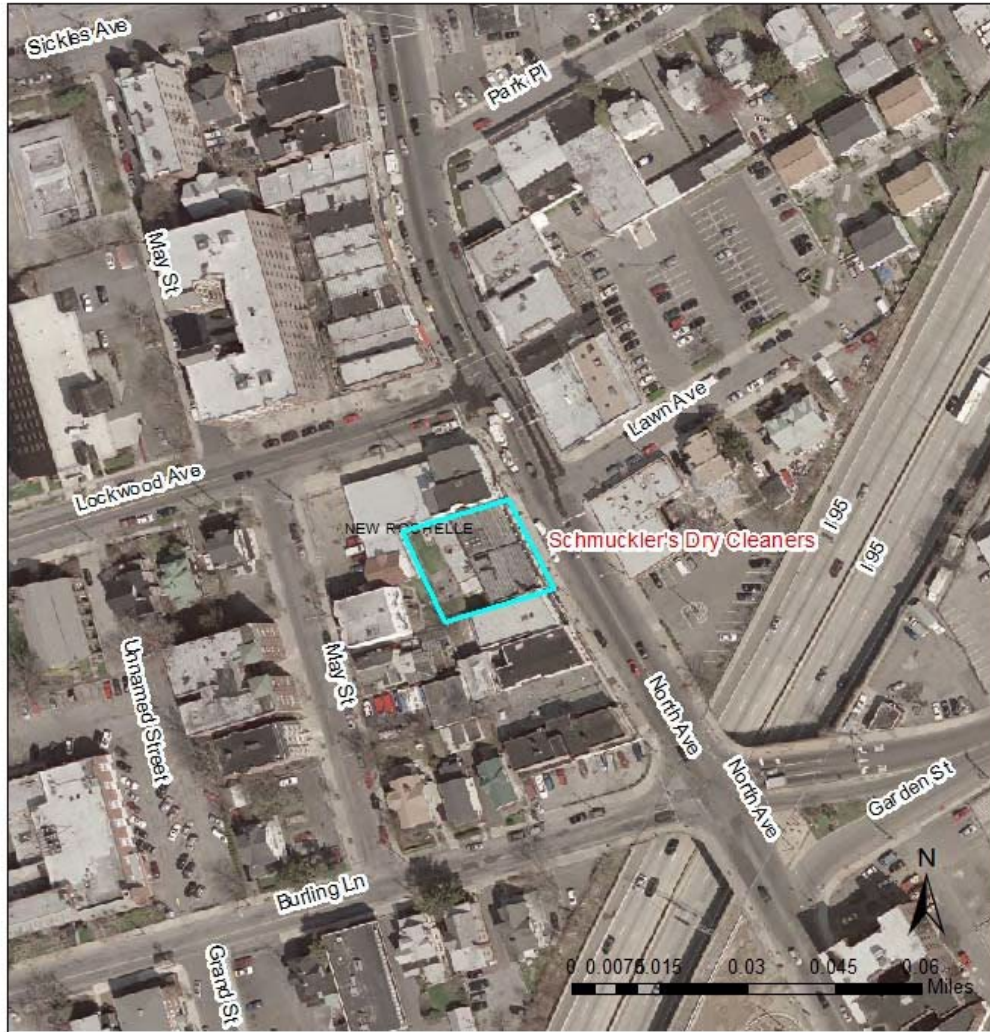
[www.dec.ny.gov/chemical/61092.html](http://www.dec.ny.gov/chemical/61092.html)

Note: Please disregard if you already have signed up and received this fact sheet electronically.

### DECInfo Locator

Interactive map to access DEC documents and public data about the environmental quality of specific sites: <https://www.dec.ny.gov/pubs/109457.html>

# STATE SUPERFUND PROGRAM



**Figure 1: Schmuckler's Dry Cleaners Location**





## Translation Available. Don't see your language? Ask!

<b>English</b>	To have this document translated into a language you can understand, contact the person below. There is no charge for the translation.
<b>Español Spanish</b>	Si necesita la traducción de este documento a un idioma que pueda entender, comuníquese con la persona indicada abajo. La traducción es gratis.
<b>简体字 Simplified Chinese</b>	如需將此文件翻譯成您能理解的語言版本，請聯絡下方人員。本次翻譯不收取費用。
<b>Русский Russian</b>	Чтобы получить перевод этого документа на понятный вам язык, свяжитесь с представителем, данные которого указаны ниже. Плата за эту услугу не взимается.
<b>אידיש Yiddish</b>	צו האבן די דאקומענט איבערגעטייטשט אין א שפראך וואס איר קענט פארשטיין, פארבינדט זיך מיט די פערזאן אונטן. די איבערטייטשונג איז פריי פון אפצאל.
<b>বাঙালি Bengali</b>	এই নথিটি আপনি বুঝতে পারেন এমন একটি ভাষায় অনুবাদ করতে, নিম্নলিখিত ব্যক্তির সাথে যোগাযোগ করুন। অনুবাদের জন্য কোন চার্জ দিতে হবে না।
<b>한국어 Korean</b>	이 언어를 본인이 이해할 수 있는 언어로 받아보려면 아래 담당자에게 문의하십시오. 번역료는 없습니다.
<b>Kreyòl Ayisyen Haitian Creole</b>	Pou yo ka tradwi dokiman sa nan yon lang ou ka konprann, kontakte moun ki anba a. Ou p'ap peye anyen pou tradiksyon an.
<b>Italiano Italian</b>	Per ottenere la traduzione di questo documento in un'altra lingua, contatti la persona indicata qui di seguito. La traduzione è gratuita.
<b>العربية Arabic</b>	لترجمة هذا المستند إلى لغة يمكنك فهمها، تواصل مع الشخص أدناه. لا يتم تطبيق رسوم مقابل الترجمة.
<b>Język Polski Polish</b>	Aby uzyskać tłumaczenie tego dokumentu na język, który jest dla Ciebie zrozumiały, skontaktuj się z poniższą osobą. Za tłumaczenie nie jest pobierana żadna opłata.

**Contact: Mark Domaracki, 518-402-9832, [mark.domaracki@dec.ny.gov](mailto:mark.domaracki@dec.ny.gov)**