

## Hubicki, Matthew S (DEC)

---

**From:** Patrick McHugh <pmchugh@akrf.com>  
**Sent:** Friday, April 27, 2018 12:53 PM  
**To:** Hubicki, Matthew S (DEC)  
**Cc:** Crosby, David (DEC); Deyette, Scott (DEC); Barry White; Marc Godick; Stephen Grens; Christopher Capece  
**Subject:** C360099 - Polychrome West Submittal #10 - Selected Disposal Facility (SoilSafe)  
**Attachments:** SoilSafe\_LoganFacilityDevelopment.pdf; C360099 - Submittal #10 - SoilSafe - Signed Approval Letter.pdf

*ATTENTION: This email came from an external source. Do not open attachments or click on links from unknown senders or unexpected emails.*

Good afternoon Matt,

Attached and for your records and/or review is the approval letter for the selected disposal facility. Excavated soil will be shipped to SoilSafe (<http://www.soilsafe.com/index.php/about-us>) in Logan, New Jersey. Also attached to this email is a short description of the facility project.

Please let us know if you have any questions, comments or concerns.

Thanks,  
Pat

--

**Patrick McHugh, P.E.**  
Environmental Engineer  
.....

### **AKRF, INC.**

*Environmental, Planning, and Engineering Consultants*

34 South Broadway , Suite 401 | White Plains , NY 10601  
P) 914.922.2387 | C) 907.378.8737 | F) 914.949.7559

[www.akrf.com](http://www.akrf.com)

# Logan Development

## Property Owner:

Soil Safe, Inc.

## Contact:

Mark Smith, President  
Soil Safe, Inc.  
6700 Alexander Bell Drive  
Columbia, Maryland 21046  
(410) 872-3990

## Purpose:

Capping and Development

## History:

The Logan property is a 160-acre Brownfield site located in Logan Township, New Jersey along the Delaware River. The site, together with many surrounding properties, was used by the Army Corps of Engineers as a former dredge depository for Delaware River navigation deepening projects throughout the 1950's and 1960's. This activity resulted in thick dredge deposits containing low-level contamination; rendering the property unusable from an environmental and geotechnical standpoint. Soil Safe acquired the property and obtained all the necessary permits to establish a soil recycling center at the site, and use the recycled product to cap 82 acres under a Remedial Action Work Plan and numerous other permits approved by the New Jersey Department of Environment (NJDEP). The capped area will be developed for commercial or industrial purposes, with the balance of the property remaining tidal and wetlands. Aside from one exception where recycled product is exported off-site to a nearby county project being performed by Soil Safe, all soil received and recycled at Logan remains on-site to build the cap.

*Gloucester County, New Jersey*

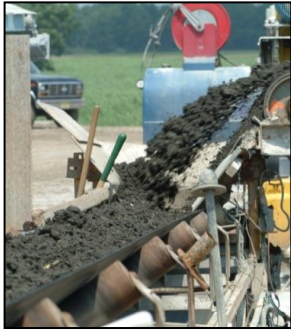


## Soil Safe Capping Concept:

Soil Safe's business model includes the recycling and beneficial use of non-hazardous contaminated soil. Through its stabilization recycling process, Soil Safe manufactures a recycled engineered Soil Product that has received Green Approved Product certification to the ICC 700 National Green Building Standard for recycled paving sub-base and other engineered soil material applications.

Soil Safe operates the Logan recycling center under 15 state and local permits. State permits were issued through the Air, Water, Class B Recycling, Site Remediation and Land Use departments of the NJDEP. The development project is funded through Soil Safe's customers who pay a fee to recycle their non-hazardous soil. Through the recycling process, Soil Safe manufactures the engineered Soil Product that is used in the construction of the cap. In Soil Safe's 25-year operating history, the company has recycled over 26 million tons of non-hazardous soil. The Soil Product has been used in hundreds of applications including landfill caps, paving, and engineered fill.

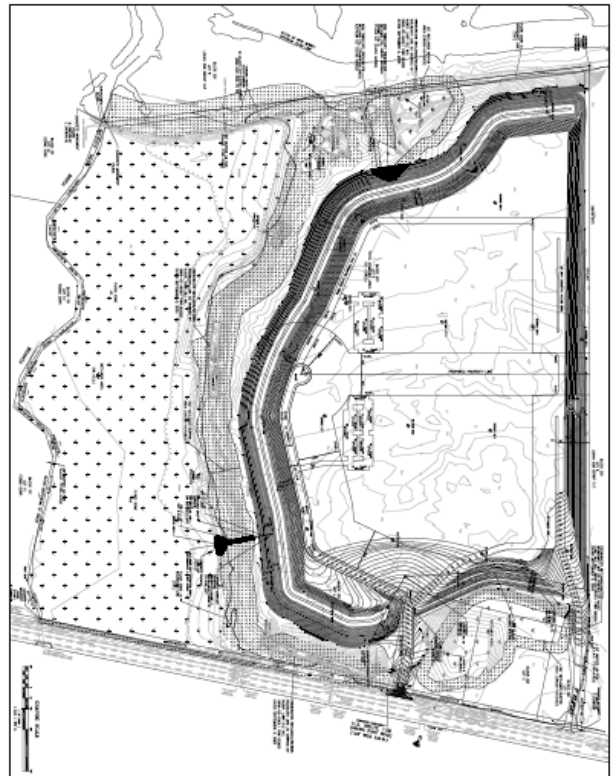
## Soil Recycling Center:



The Logan soil recycling center services the New York, New Jersey and Pennsylvania markets. The manufactured engineered Soil Product must meet strict environmental and geotechnical specifications prior to incorporation into the cap construction. All operations are supported by SoilSMART®, a state-of-the-industry Information Management System developed by Soil Safe to ensure full compliance with permits, reporting, and customer requirements. With all soil sampled and analyzed multiple times, Soil Safe ensures that the manufactured Soil Product meets all federal, state and local specifications before its use as capping and site development material, or exported off-site for use on the permitted county project.

## Permitting and Engineering:

Due to the contaminated dredge material and proximity to the Delaware River, Soil Safe followed a strict permitting and engineering protocol to gain approval from the State for the Logan operation and development. This required complete air and groundwater modeling including; AP42, AERMOD, HELP, partitioning fractions, and ModFlo Fate and Transport modeling. The low strength and drainage characteristics of the thick dredge sub-base presented several geotechnical engineering challenges in the design of the cap and the development pads for the project. The NJDEP concurred that Soil Safe's manufactured Soil Product is uniquely suited to construct a cap on this site and prepare it for development.



## Development:

Using the manufactured engineered Soil Product as the backbone for site work, Soil Safe is constructing the 82-acre cap and will prepare two large development pads on top of the cap. Soil Safe will cap and raise the grade of the site; providing a strong structural base for building construction, and an exceptional view of the Delaware River. Through the soil manufacturing process, the engineered fill material maintains uniform and consistent geotechnical properties that are superior to standard engineered fill in terms of grain size distribution, moisture-density relationship, permeability, shear and compressive strength. These characteristics are critically important for both the cap and development pads.





April 23, 2018

Robert Acampora  
Avalon Yonkers Sun Sites, LLC  
1499 Post Road  
Fairfield, CT 06824

Subject: **Avalon Bay Yonkers – Yonkers, NY +/- 3,800 tons of soil.**

Dear Mr. Acampora,

Soil Safe, Inc. has reviewed the completed and signed Material Characterization Report (MCR), the Waste Classification Borings, the Remedial Action Work Plan, dated December 2017, prepared by Paulus, Sokolowski and Sartor Engineering, PC, and the laboratory analysis reported by Alpha Analytical Laboratories; Lab Number: L1800404.

**We have approved** the approximate 3,800 tons of soil from **Grids: A, C, E, F, H, I, & J** for shipment to our Logan Township, NJ Facility under approval number **L5-1734** represented by the following samples:

WC-EX-A1 (0-7)	WC-EX-C1 (0-6)	WC-EX-E1 (0-9.5)	WC-EX-F1 (0-9)
WC-EX-H1 (0-9)	WC-EX-I1 (0-4.5)	WC-EX-J1 (0-4.5)	

Note that our permissible limits for each delivery are 1% by volume for trash (includes wood, glass, plastics and household debris) and 10% by volume for concrete, asphalt, brick and block combined; loads containing in excess of these limits, at our sole discretion, will be rejected and returned to the project site.

Regards,

Nicholas Bartlinski  
Compliance Manager

Cc: Janice Loar  
Logan Facility

*I acknowledge receipt of this letter and understand what materials are approved. I agree to note the appropriate **grid and depth** on each manifest. I confirm the Alpha Analytical Laboratories lab reports listed above is the complete characterization for the approved areas.*

X   
Signature

Print Name

**Soil Safe Incorporated • 6700 Alexander Bell Drive, Suite 300 • Columbia, MD 21046  
Phone: 410-872-3990 • Toll Free (800) 562-4365 • Facsimile (410) 872-9082**