



**Canadian Radium & Uranium Corp.**

103/105 Kisco Ave.

Mount Kisco, NY 10549

Inquiry Number: 3730247.11

September 19, 2013

## The EDR Aerial Photo Decade Package



440 Wheelers Farms Road  
Milford, CT 06461  
800.352.0050  
[www.edrnet.com](http://www.edrnet.com)

# EDR Aerial Photo Decade Package

Environmental Data Resources, Inc. (EDR) Aerial Photo Decade Package is a screening tool designed to assist environmental professionals in evaluating potential liability on a target property resulting from past activities. EDR's professional researchers provide digitally reproduced historical aerial photographs, and when available, provide one photo per decade.

**When delivered electronically by EDR, the aerial photo images included with this report are for ONE TIME USE ONLY. Further reproduction of these aerial photo images is prohibited without permission from EDR. For more information contact your EDR Account Executive.**

***Thank you for your business.***  
Please contact EDR at 1-800-352-0050  
with any questions or comments.

## **Disclaimer - Copyright and Trademark Notice**

This Report contains certain information obtained from a variety of public and other sources reasonably available to Environmental Data Resources, Inc. It cannot be concluded from this Report that coverage information for the target and surrounding properties does not exist from other sources. **NO WARRANTY EXPRESSED OR IMPLIED, IS MADE WHATSOEVER IN CONNECTION WITH THIS REPORT. ENVIRONMENTAL DATA RESOURCES, INC. SPECIFICALLY DISCLAIMS THE MAKING OF ANY SUCH WARRANTIES, INCLUDING WITHOUT LIMITATION, MERCHANTABILITY OR FITNESS FOR A PARTICULAR USE OR PURPOSE. ALL RISK IS ASSUMED BY THE USER. IN NO EVENT SHALL ENVIRONMENTAL DATA RESOURCES, INC. BE LIABLE TO ANYONE, WHETHER ARISING OUT OF ERRORS OR OMISSIONS, NEGLIGENCE, ACCIDENT OR ANY OTHER CAUSE, FOR ANY LOSS OF DAMAGE, INCLUDING, WITHOUT LIMITATION, SPECIAL, INCIDENTAL, CONSEQUENTIAL, OR EXEMPLARY DAMAGES. ANY LIABILITY ON THE PART OF ENVIRONMENTAL DATA RESOURCES, INC. IS STRICTLY LIMITED TO A REFUND OF THE AMOUNT PAID FOR THIS REPORT.** Purchaser accepts this Report AS IS. Any analyses, estimates, ratings, environmental risk levels or risk codes provided in this Report are provided for illustrative purposes only, and are not intended to provide, nor should they be interpreted as providing any facts regarding, or prediction or forecast of, any environmental risk for any property. Only a Phase I Environmental Site Assessment performed by an environmental professional can provide information regarding the environmental risk for any property. Additionally, the information provided in this Report is not to be construed as legal advice.

Copyright 2013 by Environmental Data Resources, Inc. All rights reserved. Reproduction in any media or format, in whole or in part, of any report or map of Environmental Data Resources, Inc., or its affiliates, is prohibited without prior written permission.

EDR and its logos (including Sanborn and Sanborn Map) are trademarks of Environmental Data Resources, Inc. or its affiliates. All other trademarks used herein are the property of their respective owners.

**Date EDR Searched Historical Sources:**

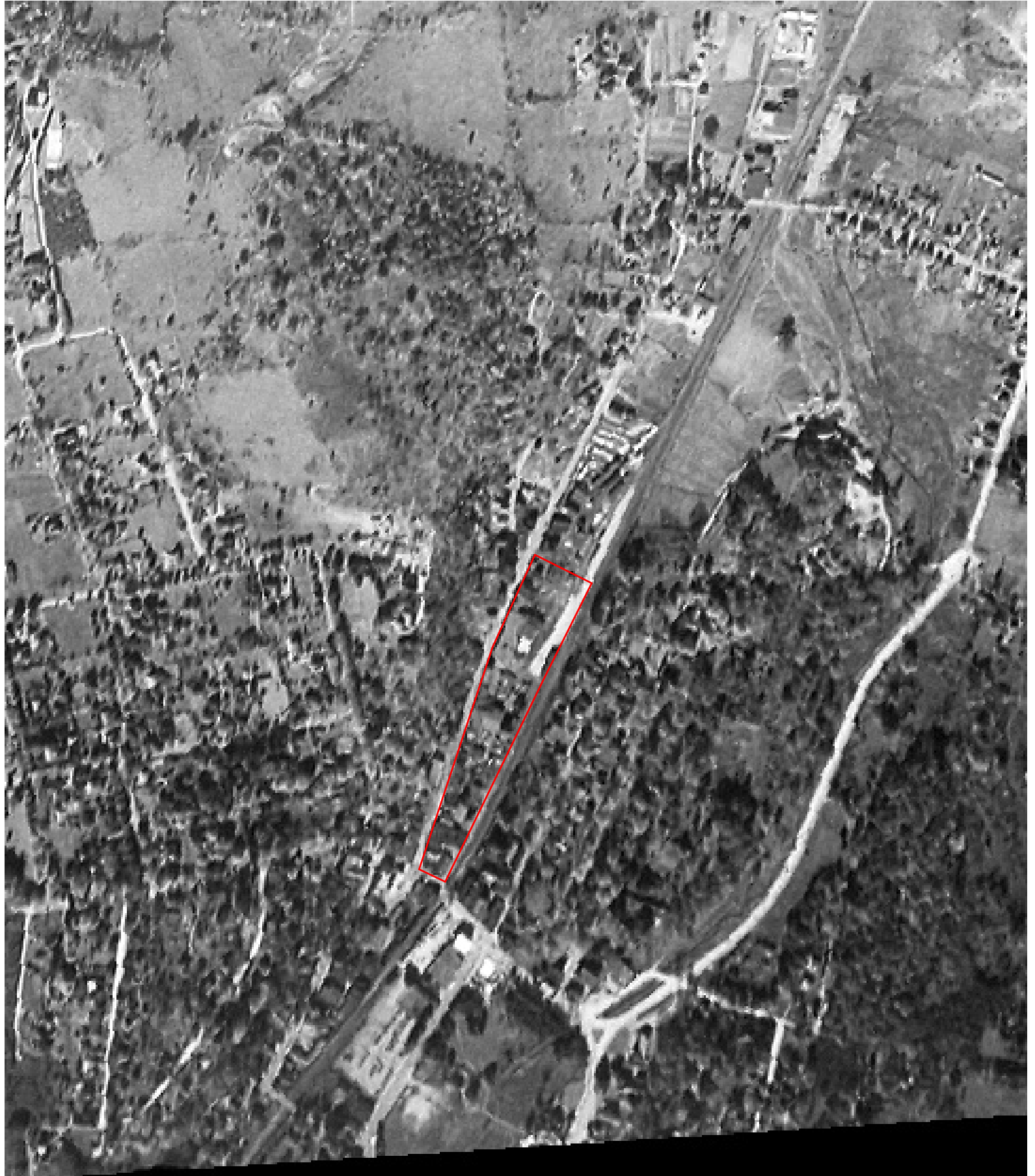
Aerial Photography September 19, 2013

**Target Property:**

103/105 Kisco Ave.

Mount Kisco, NY 10549

<u><i>Year</i></u>	<u><i>Scale</i></u>	<u><i>Details</i></u>	<u><i>Source</i></u>
1941	Aerial Photograph. Scale: 1"=500'	Panel #: 41073-B6, Mount Kisco, NY;Flight Date: January 01, 1941	EDR
1953	Aerial Photograph. Scale: 1"=500'	Panel #: 41073-B6, Mount Kisco, NY;Flight Date: April 15, 1953	EDR
1964	Aerial Photograph. Scale: 1"=500'	Panel #: 41073-B6, Mount Kisco, NY;Flight Date: March 23, 1964	EDR
1971	Aerial Photograph. Scale: 1"=500'	Panel #: 41073-B6, Mount Kisco, NY;Flight Date: December 03, 1971	EDR
1974	Aerial Photograph. Scale: 1"=750'	Panel #: 41073-B6, Mount Kisco, NY;Flight Date: October 24, 1974	EDR
1989	Aerial Photograph. Scale: 1"=750'	Panel #: 41073-B6, Mount Kisco, NY;Flight Date: April 20, 1989	EDR
1994	Aerial Photograph. Scale: 1"=500'	Panel #: 41073-B6, Mount Kisco, NY;DOQQ - acquisition dates: April 04, 1994	EDR
2006	Aerial Photograph. Scale: 1"=500'	Panel #: 41073-B6, Mount Kisco, NY;Flight Year: 2006	EDR
2009	Aerial Photograph. Scale: 1"=500'	Panel #: 41073-B6, Mount Kisco, NY;Flight Year: 2009	EDR
2011	Aerial Photograph. Scale: 1"=500'	Panel #: 41073-B6, Mount Kisco, NY;Flight Year: 2011	EDR

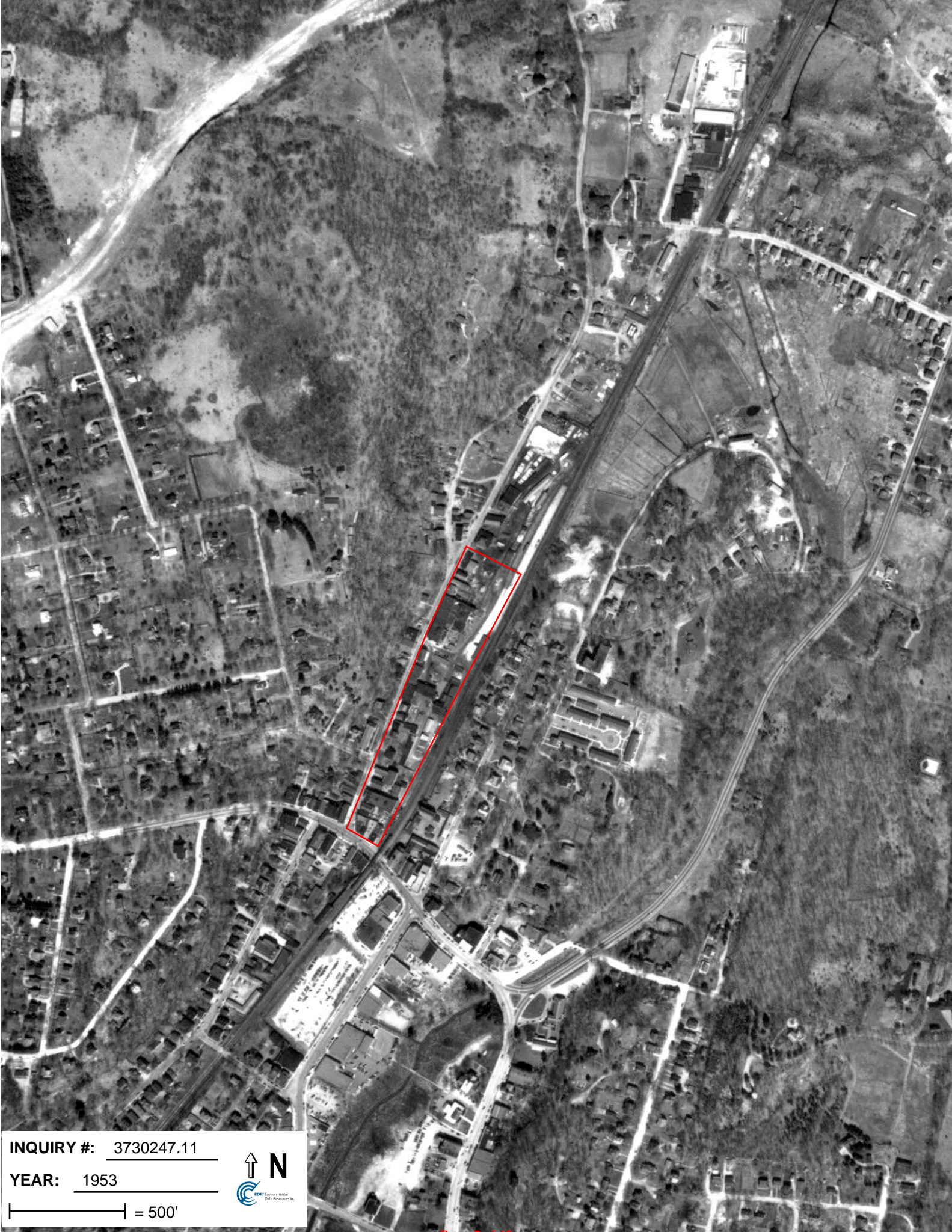


INQUIRY #: 3730247.11

YEAR: 1941

| = 500'



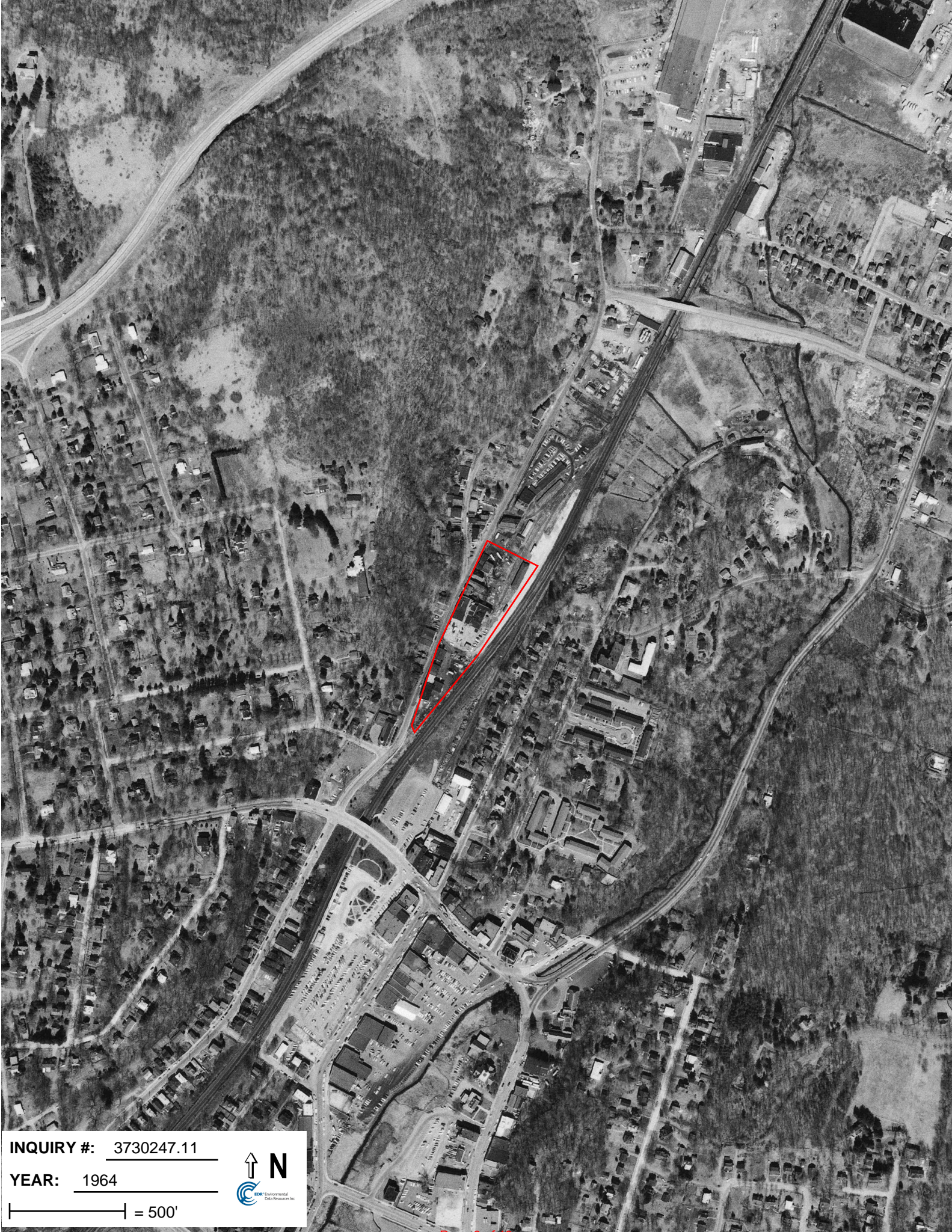


**INQUIRY #:** 3730247.11

**YEAR:** 1953

| = 500'





INQUIRY #: 3730247.11

YEAR: 1964

| = 500'



EDR Environmental Data Resources Inc.



INQUIRY #: 3730247.11

YEAR: 1971

| = 500'





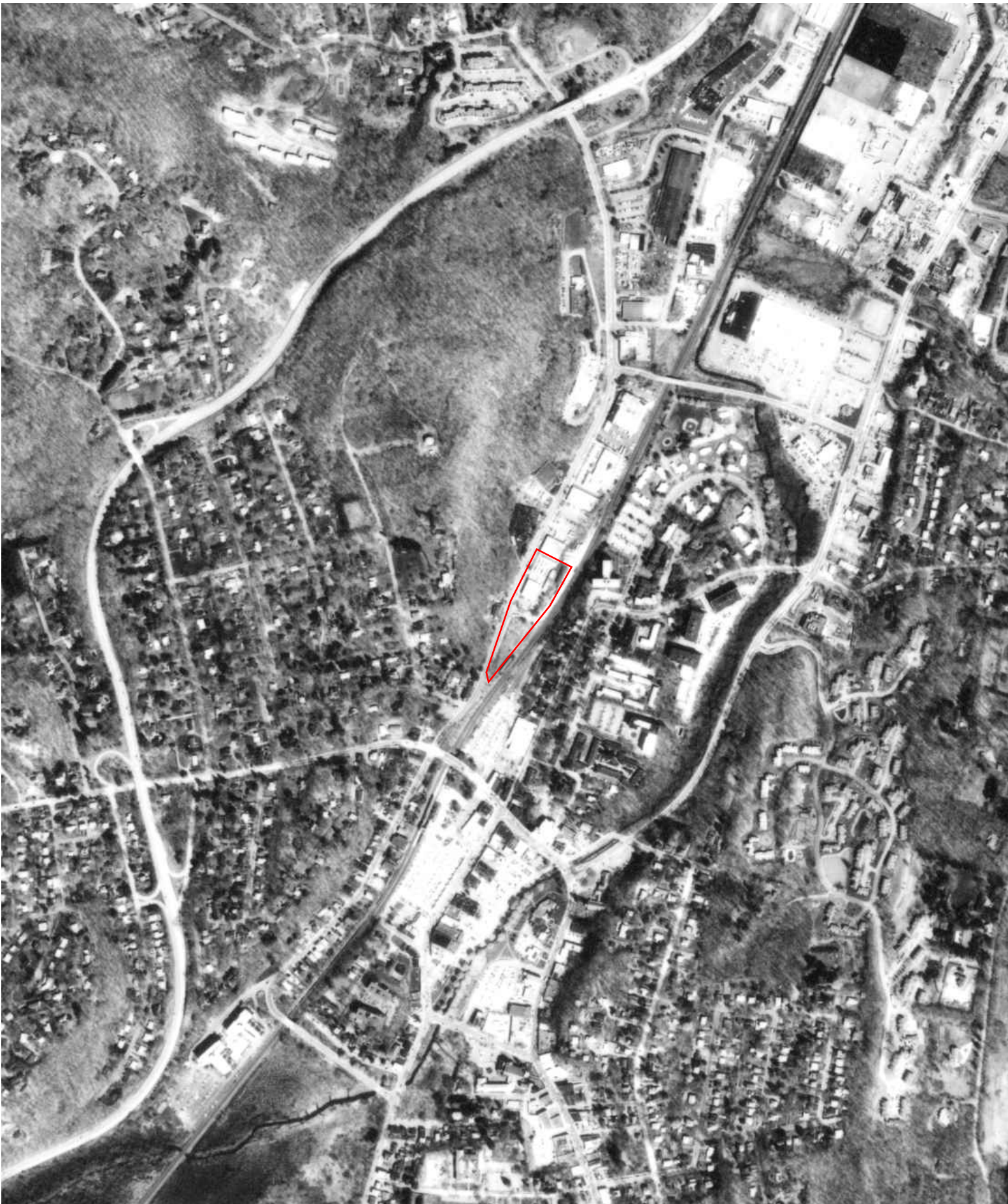
INQUIRY #: 3730247.11

YEAR: 1974

| = 750'







INQUIRY #: 3730247.11

YEAR: 1989

| = 750'





INQUIRY #: 3730247.11

YEAR: 1994

| = 500'





**INQUIRY #:** 3730247.11

**YEAR:** 2006

| = 500'





**INQUIRY #:** 3730247.11

**YEAR:** 2009

| = 500'





**INQUIRY #:** 3730247.11

**YEAR:** 2011

| = 500'

