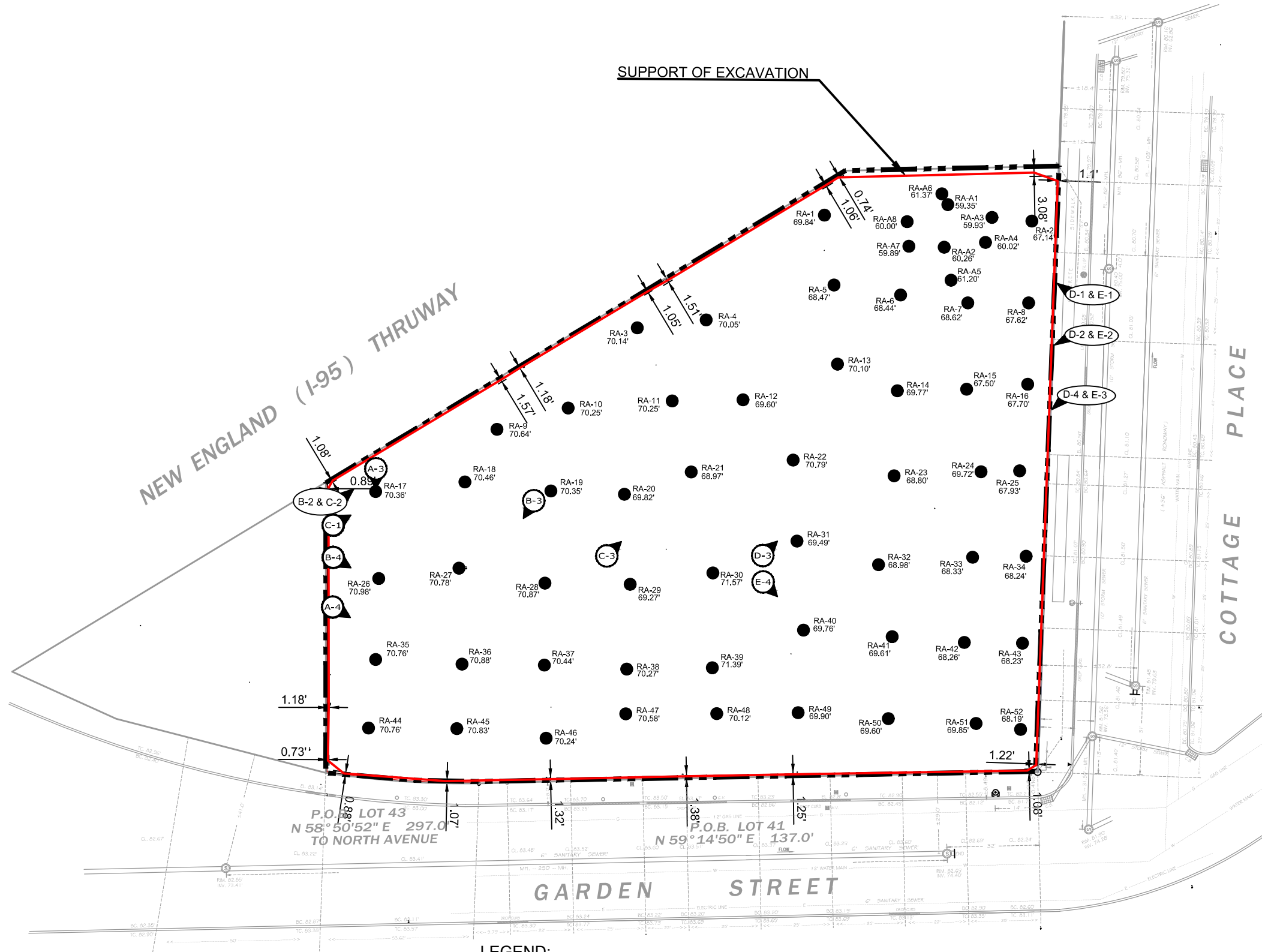
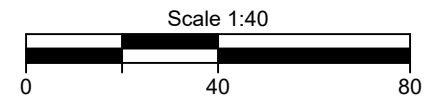


N:\ACAD\10491\FER\10491 - FIG-4.2A - PHOTO LOCATION INDEX PLAN.DWG 09/04/20 11:53:05AM, aas, LAYOUT:FIG-4.2A



LEGEND:

- RA-16 - END POINT NUMBER & LOCATION
- 67.70' - ELEVATION OF END POINT
- PROPERTY LINE
- SOE BOUNDARY
- B-2 & C-2 ○ C-1 - PHOTO LOCATION & DIRECTION



NYS Education Law  
Unauthorized alterations or additions to this plan are a violation of section 7209 (2) of the New York State Education Law. Copies of this map not having the seal of the engineer shall not be valid.

© SESI CONSULTING ENGINEERS D.P.C. 2020  
This drawing and all information contained here on is proprietary information of SESI CONSULTING ENGINEERS D.P.C. and may not be copied or reproduced, either in whole or in part, by any method, without written permission of SESI CONSULTING ENGINEERS D.P.C.

GARDEN STREET RESIDENCES  
NEW ROCHELLE, WESTCHESTER COUNTY, NY

PHOTO LOCATION INDEX PLAN

job no: 10491  
drawing no:

FIG-4.2A

SOILS / FOUNDATIONS  
SITE DESIGN  
ENVIRONMENTAL

SESI  
CONSULTING  
ENGINEERS D.P.C.

12A MAPLE AVE. PINE BROOK, N.J. 07058 PH: 973-808-9050

dwg by: aas  
chk by: SG  
scale: AS NOTED  
date: 09/04/2020

**A-3**



Facing southeast and from above, parallel to southeastern soldier pile shoring wall boundary

**A-4**



Facing east from above into and thru Cells A-4, B-4 and C-4

## B-2



Facing north from above into and through Cells B-2, C-2, D-2, E-2 and Cottage Place

**B-3**



Facing south in Cell B-3 thru B-4 and A-4

## B-4



Facing east from above thru Cells A-3, B-4 and C-4



# C-1



Facing north from above thru Cells A-3, B-2, C-1, D-1 and E-1

## C-2



Facing north from above thru Cells A-3, B-3, C-2, D-2 and E-1



**C-3**



Facing north in Cell C-3, looking thru D-2 and E-2

**C-4**



Facing east from above thru Cells A-3, B-3 and C-4

## D-1



Facing west from above, looking into Cells D-1 and E-1

## D-2



Facing south from Cell E-1 and thru Cells D-2, C-3, B-3 and A-4

## D-3



Facing north in Cell C-3 and thru Cells D-3 and E-2

## D-4



Facing south from above thru Cells E-2, D-3, D-4 and C-4



**E-1**



Facing west from above, looking into Cells E-1 and D-1

## E-2



Facing southwest from above thru Cells E-2, D-2 and B-2

**E-3**



Facing south from above thru Cells E-3, D-3, C-3 and B-4



**E-4**



Facing east from above in Cell D-3 thru E-3 and E-4