



Impact Environmental Engineering Geology, PLLC

170 Keyland Court | Bohemia | NY | 11716 | 631.269.8800 welcome to solid ground...
www.impactenvironmental.com

DAILY STATUS REPORT #16

WEATHER	Snow	Rain	X	Overcast	Partly Cloudy	Bright Sun
TEMP.	< 32	32-50		50-70	X	>85

Prepared By: Marius Sidlauskas

IEC Project No:	15514	NYSDEC BCP Site No:	C360211	Date:	10/25/2022
Project:	60 McLean Avenue, Yonkers, NY				

Consultant: Impact Environmental Engineering and Geology, PLLC (IEEG) Time On: 7:00 Time Out: 1:30	Personnel On Site: Environmental Supervisor – Marius Sidlauskas (IEEG) Foreman – Javier Velasquez (SNL Construction) Demo Contractor – Frank Mazzurco (D-Best Industries) Waste Disposal -Michael Librizzi (Brookside Environmental)
--	---

Scope of Work:

- Demolition of rear slab on second floor interior, air monitoring of dust and VOC's particles. Building walls will remain intact during rehabilitation work.
- Removal and offsite transport of slab rubble, to facilitate installation of new slab and bracing.

Site Activities:

- Three (3) endpoint samples taken from the UST excavation area. Two (2) bottom samples and one (1) south sidewall sample were collected. Sidewall samples from the north, east, and west sidewalls could not be collected due to presence of concrete retaining walls. Samples were submitted to Phoenix Laboratories for analysis of CP-51 VOCs and CP-51 SVOCs.
- Temporary backfilling of UST excavation area from previously excavated non-impacted soil pile. A demarcation layer was placed below backfilled material. This material will be sampled for waste characterization purposes, and will be re-excavated and disposed of once an appropriate facility has been selected, and approval granted.

Community Air Monitoring Program (CAMP)

- IEEG implemented work zone air monitoring during ground intrusive activities. Work zone monitoring equipment consisted of two (2) stations equipped with a DustTrak and PID positioned upwind and downwind of the work area.
- No VOC or dust concentrations were detected in exceedance of the daily short-term exposure limit at the work zone air monitoring stations.
- 0.018 (upwind) 0.034 (downwind) mg/m³, PID: 0.0 (up/down) prestart conditions.
- Upwind Dust Data ranged from 0.018 mg/m³ to 0.026 mg/m³.
- Downwind Dust Data ranged from 0.022 mg/m³ to 0.039 mg/m³.
- Upwind and downwind PID data ranged from 0.0 ppm to 0.0 ppm.
- No visible dust was observed during activities.

Miscellaneous Items or Problem Encountered:

- No visible dust was observed during activities.

Planned Activities for the Next Day:

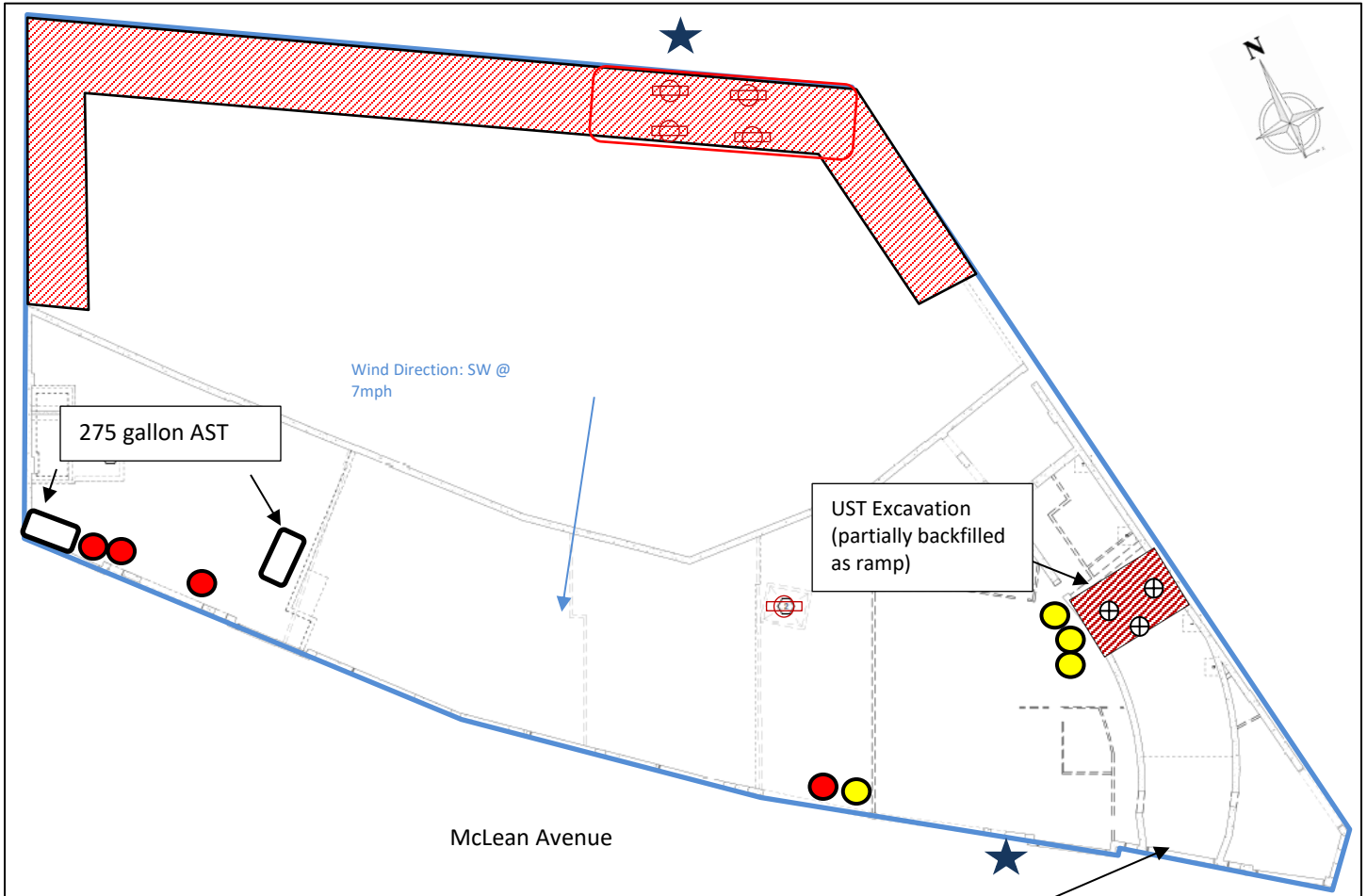
- Excavation of area previously demolished sub slab



Impact Environmental Engineering Geology, PLLC

170 Keyland Court | Bohemia | NY | 11716 | 631.269.8800 welcome to solid ground...
www.impactenvironmental.com

Site Activity Map



- ★ CAMP Station
- Property Boundary
- ▨ Work Area / Slab Broken Up (removed)
- PID Screening Point
- ▭ Over-Excavated area
- ⊕ Piston
- Hydraulic oil (2), Waste oil (1) and spent absorbent (1) Drums
- Pumped Drums (not yet removed)
- ⊕ Endpoint Sample Location

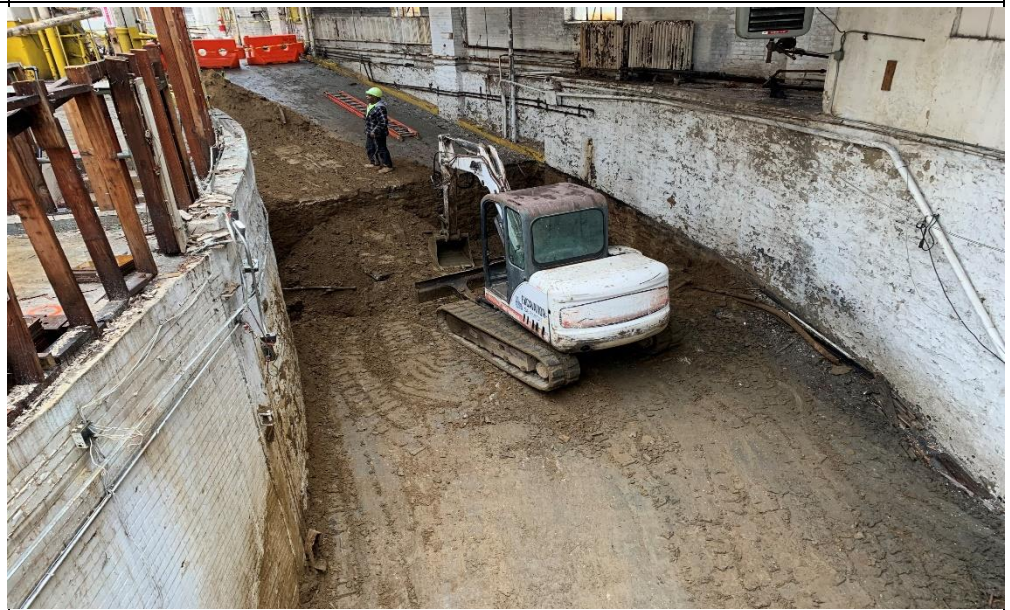


Photo Log

Photo 1 – View of backfilling of UST excavation from the non-impacted soil pile



Photo 2 – View of ramp in UST excavation area





Impact Environmental Engineering Geology, PLLC

170 Keyland Court | Bohemia | NY | 11716 | 631.269.8800 welcome to solid ground...

www.impactenvironmental.com

Photo 3 – Upwind CAMP station



Photo 4 – Downwind CAMP station next to Mclean Ave





Dust and Volatile Organic Vapor Monitoring

Project: 60 McLean Avenue Yonkers, NY Job No.: 15514
 Location: _____ On-site Personnel: MS
 Day & Date: 10/25/2022 Weather: _____
 Wind Direction: 7 mpg SW AM PM Sample Interval: 15 minutes
 Temperature Range: _____ °F Background Reading (particulates) 0.018 mg/m³
 Background Reading (organic vapors) 0.0 ppm
 Calibration Dates: Particulate Meters: _____ Photoionization Detector: _____
 Action: Organic vapors: > 5ppm above background levels/ 15 minute readings
 Level/Response: Particulates: 0.100 mg/m³ above up wind reading/15 minute period

Time	Particulate levels:		ORGANIC VAPOR LEVELS (ppm)	NOTES
	UPWIND (mg/m ³)	DOWNWIND (mg/m ³)		
0700				
0715				
0730				
0745				
0800				
0815				
0830	0.018	0.0034	0.0	Excavation Begins
0845	0.020	0.037	0.0	
0900	0.022	0.039	0.0	
0915	0.022	0.033	0.0	
0930	0.021	0.029	0.0	
0945	0.019	0.022	0.0	
1000	0.019	0.022	0.0	
1015	0.023	0.026	0.0	
1030	0.022	0.025	0.0	
1045	0.025	0.027	0.0	
1100	0.026	0.026	0.0	
1115	0.026	0.026	0.0	



IMPACT ENVIRONMENTAL

welcome to solid ground...

170 Keyland Court | Bohemia | NY | 11716 | 631.269.8800

www.impactenvironmental.com

Project: _____ Job No.: _____
 Location: _____ Day & Date: _____

Time	Particulate levels:		ORGANIC VAPOR LEVELS (ppm)	NOTES
	UPWIND (mg/m ³)	DOWNWIND (mg/m ³)		
1215	0.025	0.029	0.0	
1230	0.025	0.028	0.0	
1245	0.030	0.032	0.0	
1300	0.015	0.035	0.0	
1315				Activity Ends
1330				
1345				
1400				
1415				
1430				
1445				
1500				
1515				
1530				
1545				
1600				



IMPACT ENVIRONMENTAL

welcome to solid ground...

170 Keyland Court | Bohemia | NY | 11716 | 631.269.8800

www.impactenvironmental.com

1615				
1630				
1645				
1700				