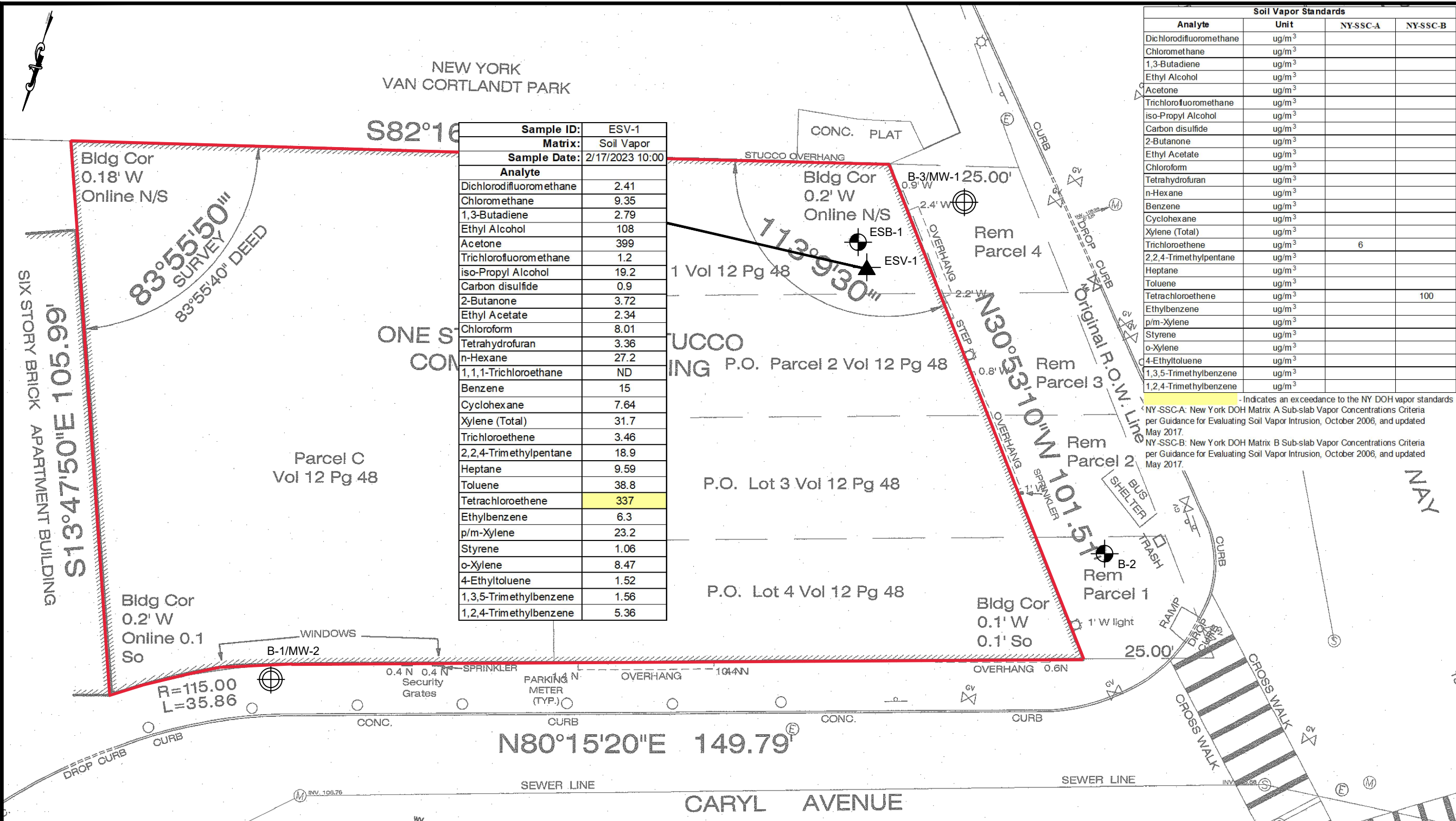


N:\ACAD\12453A - YONKERS, NY (MACQUESTEN - PHASE II)\CAD\PHASE II\12453A\_BORING LOCATION WITH ANALYSIS.DWG 04/24/23 03:33:39PM, alan.ward, LAYOUT.FIG 4 VAPOR



Sample ID:	ESV-1
Matrix:	Soil Vapor
Sample Date:	2/17/2023 10:00
Analyte	
Dichlorodifluoromethane	2.41
Chloromethane	9.35
1,3-Butadiene	2.79
Ethyl Alcohol	108
Acetone	399
Trichlorofluoromethane	1.2
iso-Propyl Alcohol	19.2
Carbon disulfide	0.9
2-Butanone	3.72
Ethyl Acetate	2.34
Chloroform	8.01
Tetrahydrofuran	3.36
n-Hexane	27.2
1,1,1-Trichloroethane	ND
Benzene	15
Cyclohexane	7.64
Xylene (Total)	31.7
Trichloroethene	3.46
2,2,4-Trimethylpentane	18.9
Heptane	9.59
Toluene	38.8
Tetrachloroethene	337
Ethylbenzene	6.3
p/m-Xylene	23.2
Styrene	1.06
o-Xylene	8.47
4-Ethyltoluene	1.52
1,3,5-Trimethylbenzene	1.56
1,2,4-Trimethylbenzene	5.36

Soil Vapor Standards			
Analyte	Unit	NY-SSC-A	NY-SSC-B
Dichlorodifluoromethane	ug/m <sup>3</sup>		
Chloromethane	ug/m <sup>3</sup>		
1,3-Butadiene	ug/m <sup>3</sup>		
Ethyl Alcohol	ug/m <sup>3</sup>		
Acetone	ug/m <sup>3</sup>		
Trichlorofluoromethane	ug/m <sup>3</sup>		
iso-Propyl Alcohol	ug/m <sup>3</sup>		
Carbon disulfide	ug/m <sup>3</sup>		
2-Butanone	ug/m <sup>3</sup>		
Ethyl Acetate	ug/m <sup>3</sup>		
Chloroform	ug/m <sup>3</sup>		
Tetrahydrofuran	ug/m <sup>3</sup>		
n-Hexane	ug/m <sup>3</sup>		
Benzene	ug/m <sup>3</sup>		
Cyclohexane	ug/m <sup>3</sup>		
Xylene (Total)	ug/m <sup>3</sup>		
Trichloroethene	ug/m <sup>3</sup>	6	
2,2,4-Trimethylpentane	ug/m <sup>3</sup>		
Heptane	ug/m <sup>3</sup>		
Toluene	ug/m <sup>3</sup>		
Tetrachloroethene	ug/m <sup>3</sup>		100
Ethylbenzene	ug/m <sup>3</sup>		
p/m-Xylene	ug/m <sup>3</sup>		
Styrene	ug/m <sup>3</sup>		
o-Xylene	ug/m <sup>3</sup>		
4-Ethyltoluene	ug/m <sup>3</sup>		
1,3,5-Trimethylbenzene	ug/m <sup>3</sup>		
1,2,4-Trimethylbenzene	ug/m <sup>3</sup>		

- Indicates an exceedance to the NY DOH vapor standards  
 NY-SSC-A: New York DOH Matrix A Sub-slab Vapor Concentrations Criteria per Guidance for Evaluating Soil Vapor Intrusion, October 2006, and updated May 2017.  
 NY-SSC-B: New York DOH Matrix B Sub-slab Vapor Concentrations Criteria per Guidance for Evaluating Soil Vapor Intrusion, October 2006, and updated May 2017.

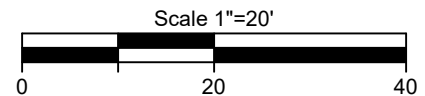
NOTE:  
 THIS PLAN IS FOR LOCATING SITE FEATURES ONLY.  
 OTHER SITE WORK SHOWN HERE IS NOT INTENDED FOR CONSTRUCTION.

REFERENCE  
 1. EXIST CONDITIONS & BOUNDARY ARE TAKEN FROM "SURVEY OF TAX LOT 1 BLOCK 29"  
 PREPARED BY GABRIEL E. SENOR, P.C. DATED MAY 25, 2022.

© SESI CONSULTING ENGINEERS 2023  
 This drawing and all information contained here on is proprietary information of SESI CONSULTING ENGINEERS and may not be copied or reproduced, either in whole or in part, by any method, without written permission of SESI CONSULTING ENGINEERS.

**LEGEND**

- SOIL BORING LOCATION
- SOIL BORING / MONITORING WELL LOCATION
- SOIL VAPOR POINT LOCATION
- BCP SITE/ PARCEL BOUNDARY



dwg by: AW  
 chk by: JVV  
 scale: AS NOTED  
 date: 04/24/2023

**SESI CONSULTING ENGINEERS**  
 GEOTECHNICAL | ENVIRONMENTAL | SITE CIVIL  
 959 route 46e, 3rd floor, Parsippany, nj 07054 ph: 973.808.9050

project:  
 632 SOUTH BROADWAY  
 YONKERS, NEW YORK

title:  
 SOIL VAPOR SAMPLE LOCATION MAP  
 WITH ANALYSES ABOVE STANDARDS

job no: 12453A  
 drawing no:

**FIG 4**