

STERLING

Sterling Environmental Engineering, P.C.
24 Wade Road • Latham, New York 12110

SITE LOCATION MAP
TROY BELTING AND SUPPLY COMPANY
70 COHOES ROAD

TOWN OF COLONIE

ALBANY CO., NY



LEGEND:

- SB-9 SOIL BORING (RJS ENVIRONMENTAL, 2011)
- I TP-14-5 TEST PIT (STERLING, 2014)
- SW-4 SURFACE WATER/SEDIMENT SAMPLE (STERLING, 2014)
- MW-6 RI MONITORING WELL (STERLING 2014/2015)
- ▲ 7-SV-IA-OA SUB-SLAB/INDOOR/OUTDOOR AIR SAMPLE - OFFSITE (STERLING 2014-2018)
- SS-2 SURFACE SOIL SAMPLE (STERLING 2014)
- BROWNFIELD CLEANUP AREA BOUNDARY

MAP REFERENCES:

1. BASE MAP: (INCLUDING EXISTING MONITORING WELL LOCATIONS & APPROXIMATE PROPERTY LINE), IS FROM DRAWING ENTITLED "MONITORING WELL SURVEY," BY CORNERSTONE SURVEYING & MAPPING, DECEMBER 17, 2012.
2. FORMER BROOK LOCATION FROM DRAWING ENTITLED "SURVEY OF PARCEL OF LAND," BY KING & DANSKIN, ENGINEERING & SURVEYING, JUNE 3, 1964.
3. EXISTING SOIL BORING LOCATIONS FROM DRAWING ENTITLED "BORING LOCATION MAP" (WITHIN PHASE II REPORT), BY RJS ENVIRONMENTAL, SEPTEMBER 28, 2011.
4. AERIAL IMAGE FROM NEW YORK STATEWIDE DIGITAL ORTHOMAGERY PROGRAM, PHOTOGRAPHY CIRCA 2011

STERLING

Sterling Environmental Engineering, P.C.

24 Wade Road • Latham, New York 12110

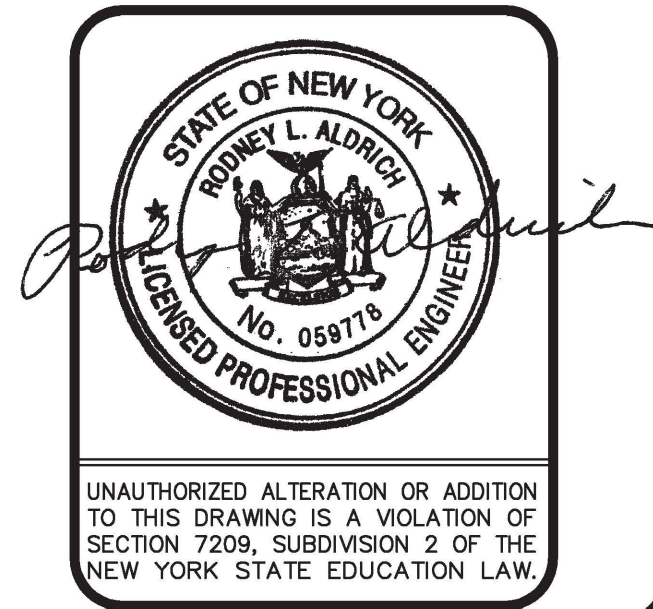
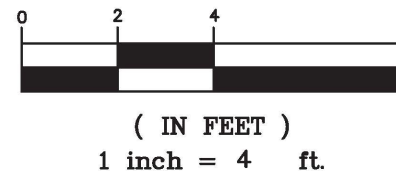
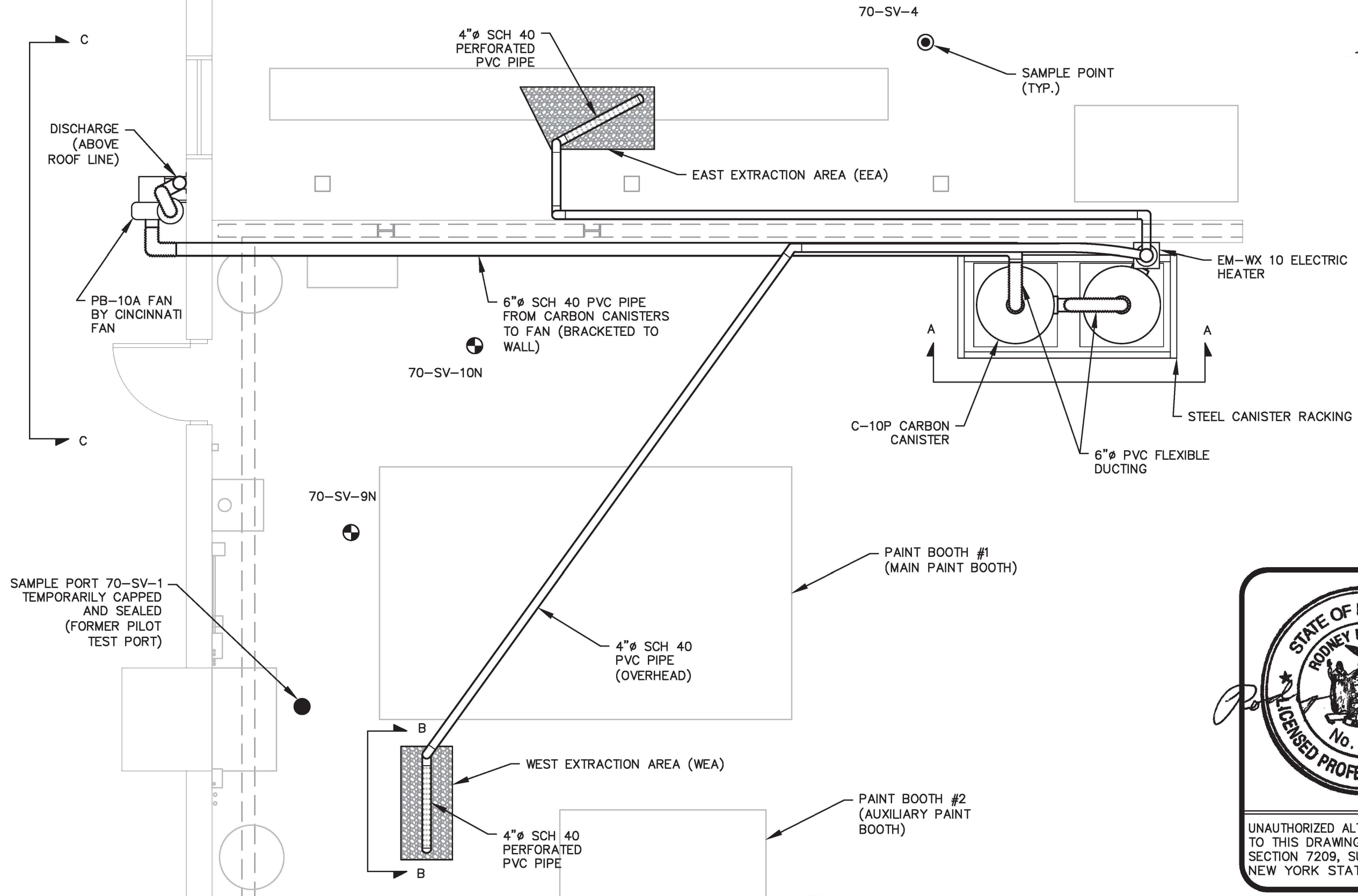
SITE VICINITY & HISTORICAL SAMPLE LOCATION MAP
TROY BELTING AND SUPPLY COMPANY
70 COHOES ROAD

TOWN OF COLONIE

ALBANY CO., N.Y.

PROJ. No.: 2011-31 | DATE: 04/28/2022 | SCALE: 1" = 60' | DWG. NO. 2011-31224 | FIGURE 2

S:\Drawings\2011-31- Troy Belting and Supply Co\2011-31100_VMS Monitoring Figure.dwg CAD 7/20/2016 12:51 PM

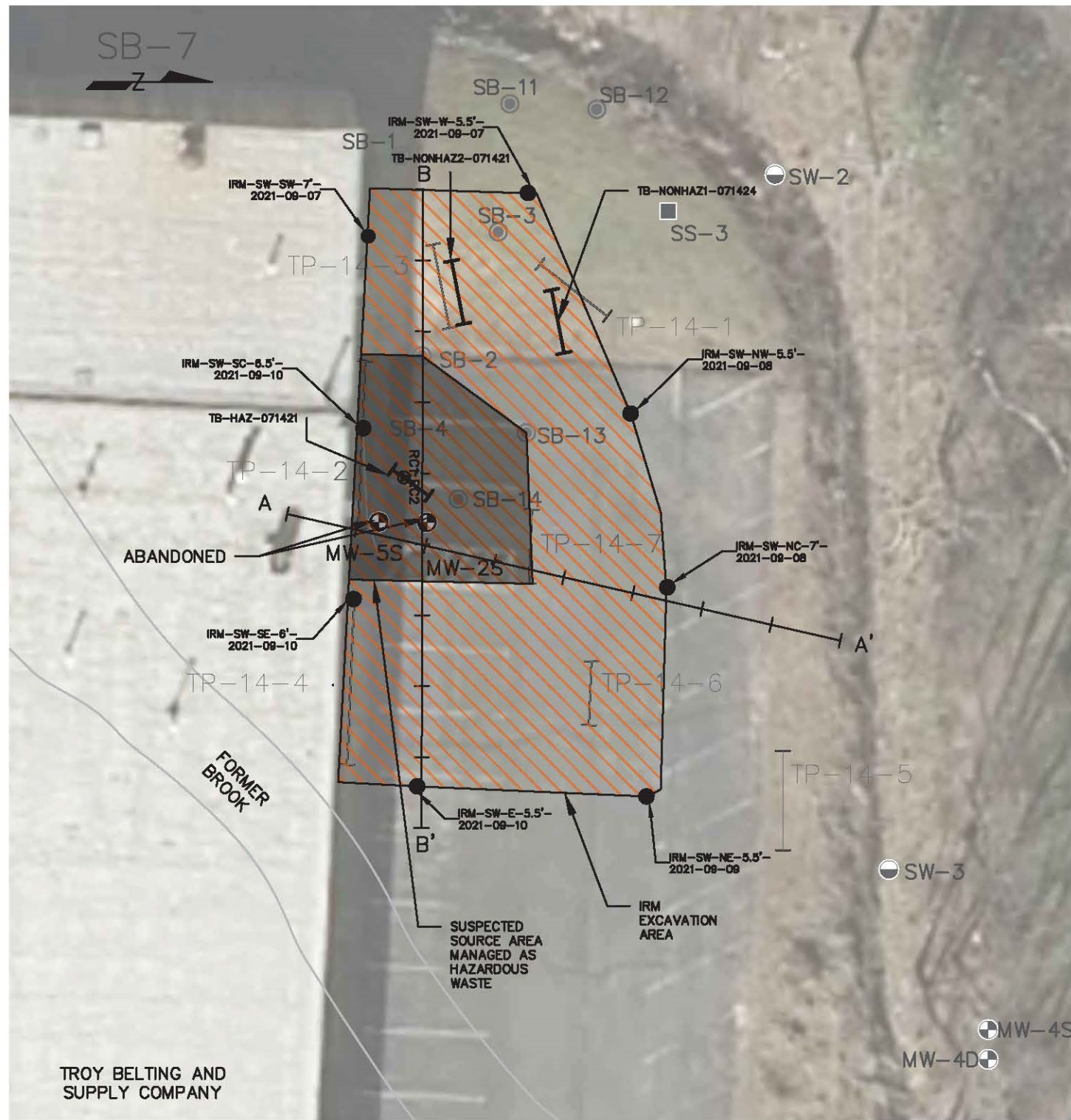


STERLING
Sterling Environmental Engineering, P.C.
24 Wade Road • Latham, New York 12110

VAPOR MITIGATION SYSTEM
LAYOUT
TROY BELTING & SUPPLY CO.
70 COHOES ROAD
TOWN OF COLONIE ALBANY CO., N.Y.

PROJ. No.: 2011-31 | DATE: 07/07/2016 | SCALE: 1" = 4' | DWG. NO. 2011-31100 | FIGURE 3

S:\Sterling\Projects\2011 Projects\Troy Belting and Supply Co - 2011-31\Drawings-Maps-Figures\2011-31227_IRM CCR As-Built Section View_F-5.dwg CAD 12/10/2021 12:15 PM

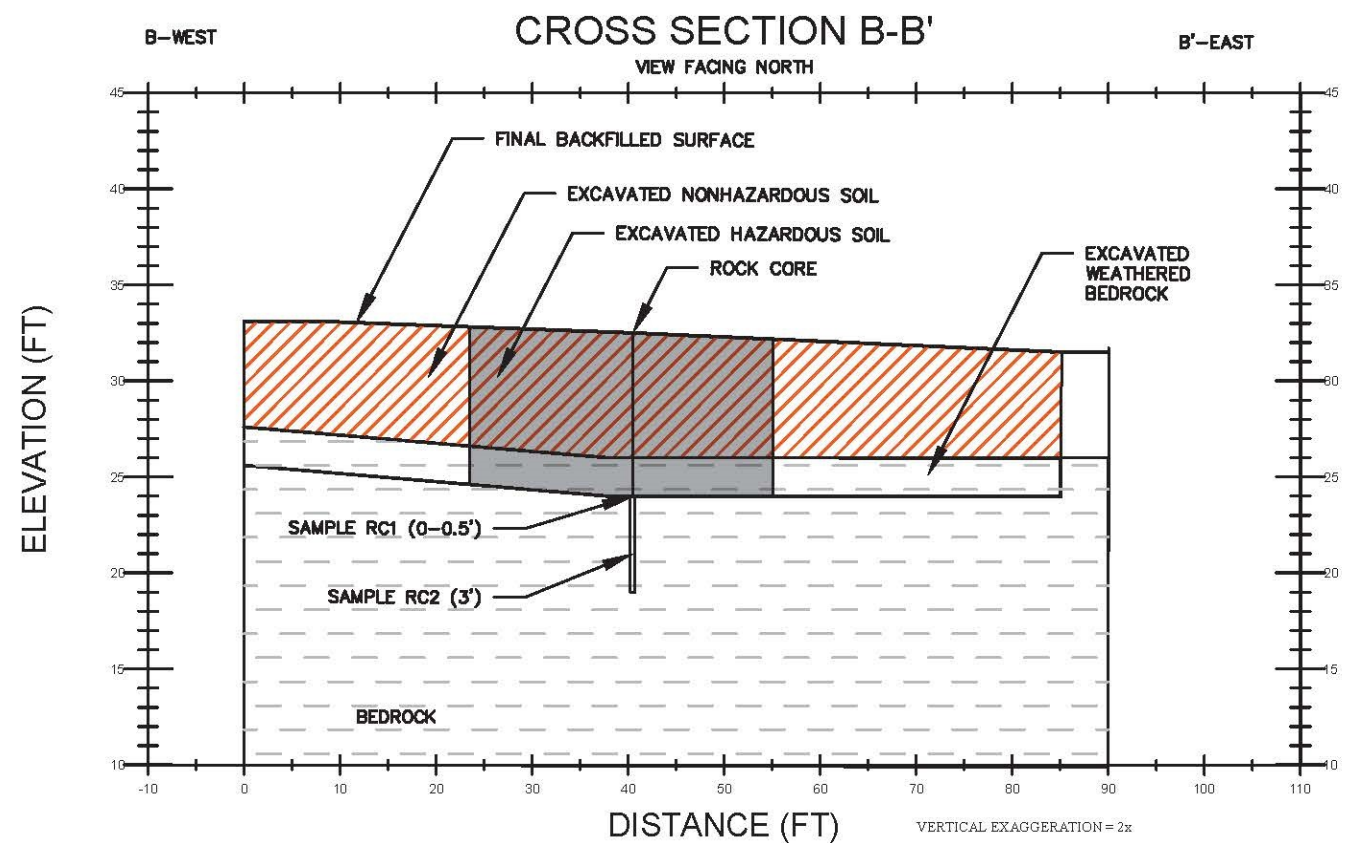
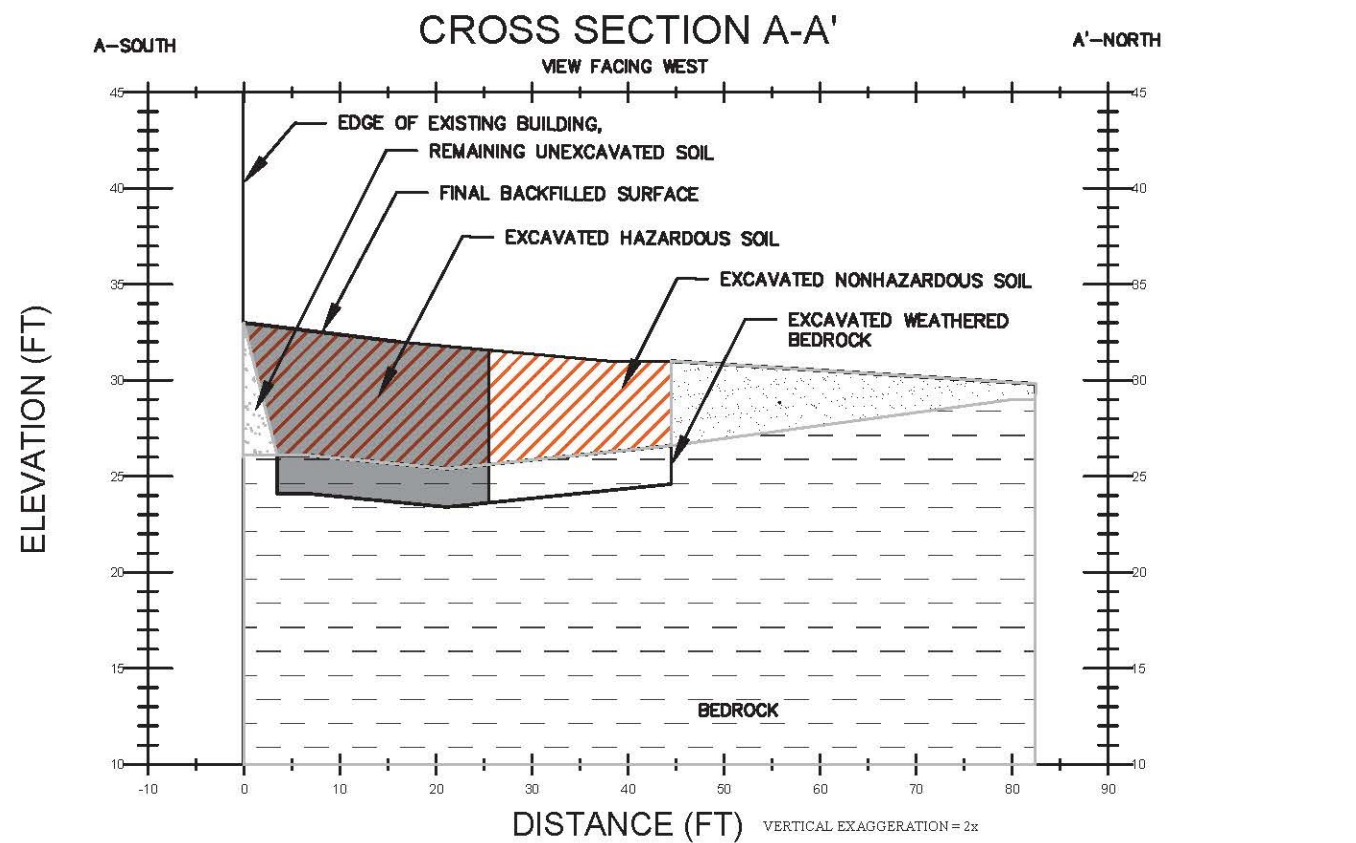
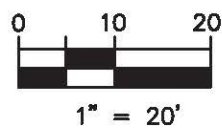


LEGEND:

- IRM EXCAVATION SIDE WALL SAMPLE
- HISTORIC SURFACE WATER / SEDIMENT SAMPLE
- HISTORIC SOIL BORING
- ⊕ MONITORING WELL
- ┌ IRM WASTE CHARACTERIZATION TEST PIT
- └ HISTORIC TEST PIT
- ▲ IRM ROCK CORE SAMPLE

MAP REFERENCES:

1. BASE MAP: (INCLUDING EXISTING MONITORING WELL LOCATIONS & APPROXIMATE PROPERTY LINE), IS FROM DRAWING ENTITLED "MONITORING WELL SURVEY," BY CORNERSTONE SURVEYING & MAPPING, DECEMBER 17, 2012.
2. AERIAL IMAGE FROM NEW YORK STATEWIDE DIGITAL ORTHOIMAGERY PROGRAM, PHOTOGRAPHY CIRCA 2011



STERLING

Sterling Environmental Engineering, P.C.

24 Wade Road • Latham, New York 12110

SOURCE AREA EXCAVATION IRM
AS-BUILT SECTION VIEW
TROY BELTING AND SUPPLY COMPANY
70 COHOES ROAD

TOWN OF COLONIE

ALBANY CO., NY

PROJ. No.: 2011-31 | DATE: 12/09/2021 | SCALE: 1" = 20' | DWG. NO. 2011-31227 | FIGURE 4

CONTAMINANT [ppm.]	SOIL CLEANUP OBJECTIVES			SAMPLE ID AND COLLECTION DEPTHS							
	PoG SCO [ppm.]	Commercial SCO [ppm.]	Industrial SCO [ppm.]	IRM-SW-W	IRM-SW-SW	IRM-SW-NW	IRM SW-NC	IRM SW-NE	IRM-SW-SC	IRM-SW-SE	IRM-SW-E
				5.5 ft.	7 ft.	5.5 ft.	7 ft.	5.5 ft.	6.5 ft.	6 ft.	5.5 ft.
Tetrachloroethene	1.3	500	1000	0.017	0.1	0.38	9.3	2.7	17	1	0.00009
Trichloroethene	0.47	200	400	18	6.4	20	57	16	220	6	0.0063
1,1,1-Trichloroethane	0.68	500	1000	1.4	0.16	0.43	0.65	0.17	3.2	0.059	0.00024
cis-1,2-Dichloroethene	0.25	500	1000	0.39	0.67	0.59	16	3.9	4.8	2.6	0.043
1,1-Dichloroethene	0.33	500	1000	0.022	0.015	0.015	0.12	0.023	0.11	0.0064	0.00011
1,1-Dichloroethane	0.27	240	480	0.012	0.031	0.0099	0.063	0.093	0.067	0.019	0.0033
Vinyl Chloride	0.02	13	27	0.029	0.02	0.011	0.21	0.06	0.15	0.086	0.016

