

## FIGURES



MAP REFERENCE: NYSDOT TROY NORTH QUADRANGLE, 1991, TROY SOUTH QUADRANGLE, 1993.

**STERLING**  
Sterling Environmental Engineering, P.C.

24 Wade Road • Latham, New York 12110

SITE LOCATION MAP  
TROY BELTING & SUPPLY CO.  
70 COHOES ROAD

TOWN OF COLONIE

ALBANY CO., N.Y.

PROJ. No.: 2011-31 | DATE: 4/10/14 | SCALE: 1" = 2000' | DWG. NO. 2011-31033 | FIGURE 1



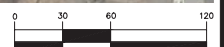


#### LEGEND:

- SB-9 SOIL BORING (RJS ENVIRONMENTAL, 2011)
- TP-44 TEST PIT (STERLING, 2014)
- SW/SED-4 SURFACE WATER/SEDIMENT SAMPLE (STERLING, 2014)
- MW-6 RI MONITORING WELL (STERLING 2014/2015)
- ▲ 7-SV-IA-OA SUB-SLAB/INDOOR/OUTDOOR AIR SAMPLE - ONSITE (STERLING 2014-2018)
- ▲ 7-SV-IA-OA SUB-SLAB/INDOOR/OUTDOOR AIR SAMPLE - OFFSITE (STERLING 2014-2018)
- SS-2 SURFACE SOIL SAMPLE (STERLING 2014)
- APPROXIMATE PROPERTY BOUNDARY

#### MAP REFERENCES:

1. BASE MAP: (INCLUDING EXISTING MONITORING WELL LOCATIONS & APPROXIMATE PROPERTY LINE), IS FROM DRAWING ENTITLED "MONITORING WELL SURVEY" BY CORNERSTONE SURVEYING & MAPPING, DECEMBER 17, 2012.
2. FORMER BROOK LOCATION FROM DRAWING ENTITLED "SURVEY OF PARCEL OF LAND," BY KING & DANKIN, ENGINEERING & SURVEYING, JUNE 3, 1964.
3. "EXISTING SOIL BORING LOCATIONS FROM DRAWING ENTITLED "BORING LOCATION MAP" (WITHIN PHASE II REPORT), BY RJS ENVIRONMENTAL, SEPTEMBER 26, 2011.
4. AERIAL IMAGE FROM NEW YORK STATEWIDE DIGITAL ORTHOMAGERY PROGRAM, PHOTOGRAPHY CIRCA 2011



( IN FEET )  
1 inch = 60 ft.

**STERLING**

Sterling Environmental Engineering, P.C.

24 Wade Road • Latham, New York 12110

SAMPLE AND WELL LOCATIONS MAP  
TROY BELTING AND SUPPLY CO.  
70 COHOES ROAD

TOWN OF COLONIE ALBANY CO., N.Y.

PROJ. NO.: 2011-31 | DATE: 6/25/2018 | SCALE: 1" = 60' | DWG. NO. 2011-31189 | FIGURE 2



NOTE: SEE FIGURE 4 FOR CROSS SECTION

**LEGEND:**

- MW-1 EXISTING MONITORING WELL
- SB-1 EXISTING SOIL BORING LOCATION
- APPROXIMATE PROPERTY LINE

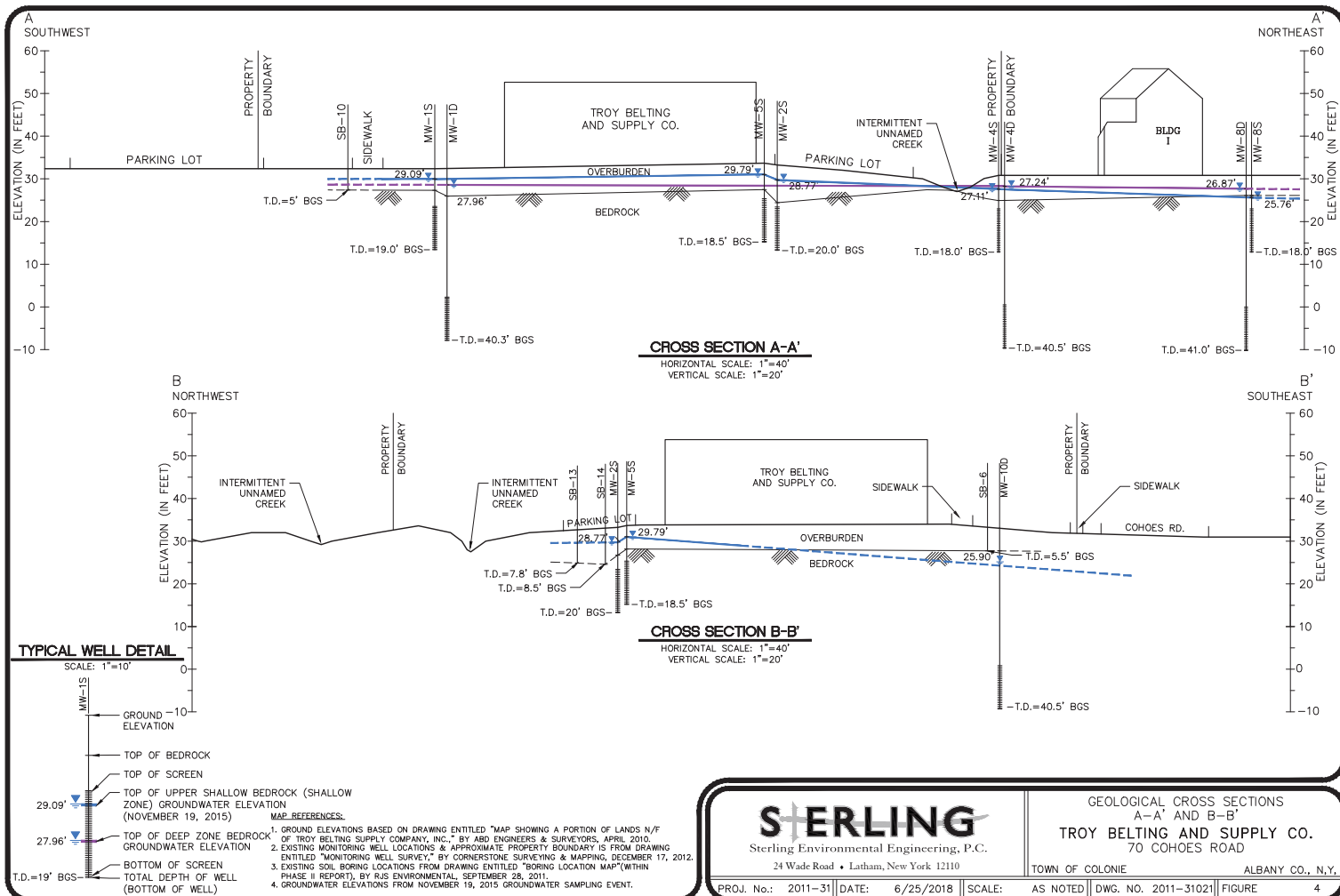
**MAP REFERENCES:**

1. BASE MAP: (INCLUDING EXISTING MONITORING WELL LOCATIONS & APPROXIMATE PROPERTY LINE) IS FROM DRAWING ENTITLED "MONITORING WELL SURVEY," BY CORNERSTONE SURVEYING & MAPPING, DECEMBER 17, 2012.
2. EXISTING SOIL BORING LOCATIONS FROM DRAWING ENTITLED "BORING LOCATION MAP" (WITHIN PHASE II REPORT), BY RJS ENVIRONMENTAL, SEPTEMBER 28, 2011.
3. AERIAL IMAGE FROM NEW YORK STATEWIDE DIGITAL ORTHOMAGERY PROGRAM, PHOTOGRAPHY CIRCA 2011

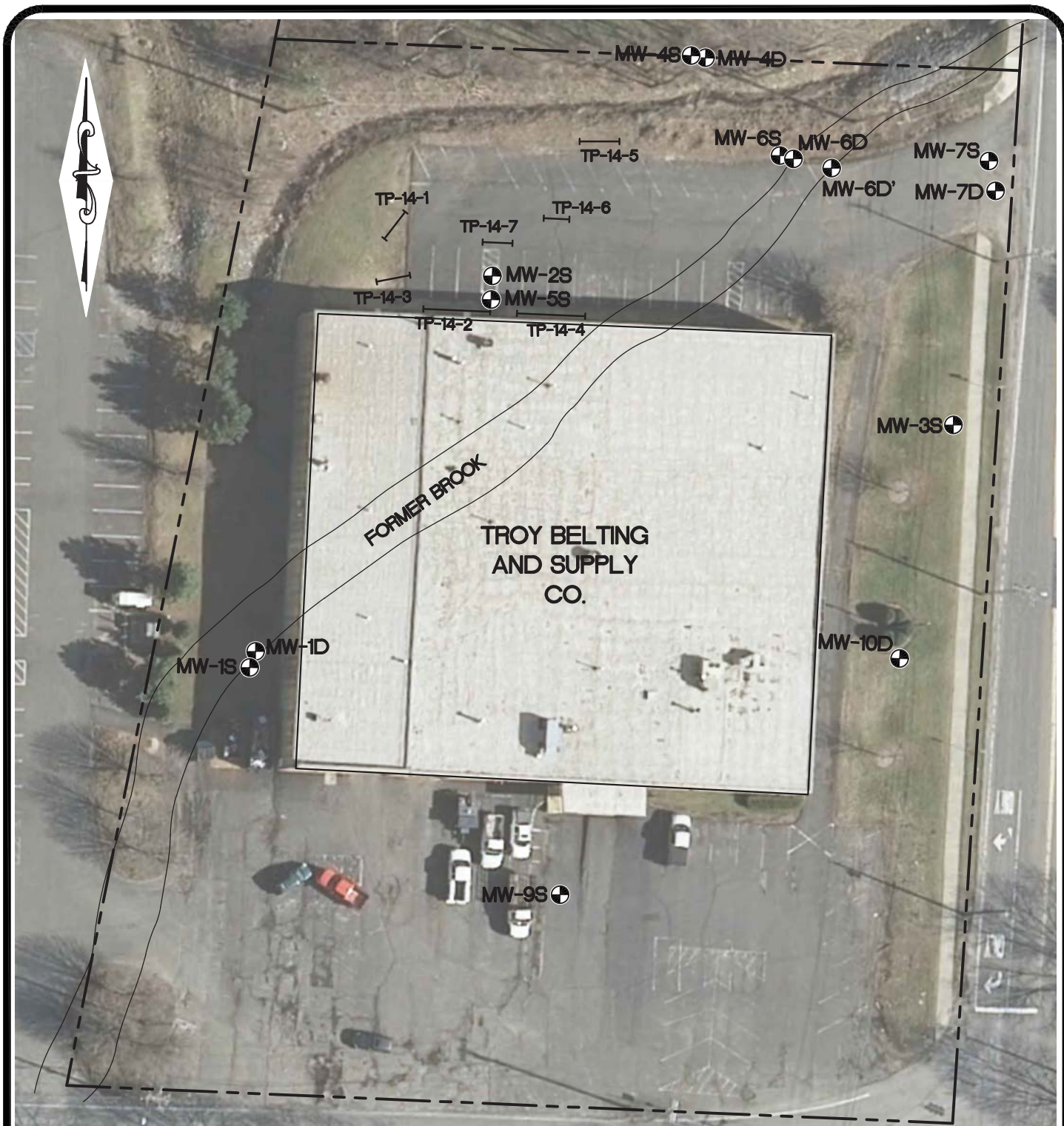
**STERLING**  
Sterling Environmental Engineering, P.C.  
24 Wade Road • Latham, New York 12110

EXISTING BORING AND MONITORING WELL LOCATIONS  
WITH LOCATION OF CROSS SECTIONS A-A' & B-B'  
**TROY BELTING AND SUPPLY COMPANY**  
70 COHOES ROAD  
TOWN OF COLONIE ALBANY CO., N.Y.

PROJ. No.: 2011-31 | DATE: 12/29/2017 | SCALE: 1" = 60' | DWG. NO. 2011-31020 | FIGURE 3





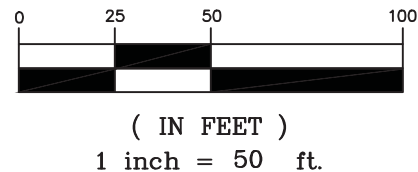


**LEGEND:**

- TEST PIT LOCATIONS  
**MW-1S** APPROXIMATE MONITORING WELL

**MAP REFERENCES:**

1. BASE MAP: (INCLUDING EXISTING MONITORING WELL LOCATIONS & APPROXIMATE PROPERTY LINE), IS FROM DRAWING ENTITLED "MONITORING WELL SURVEY," BY CORNERSTONE SURVEYING & MAPPING, DECEMBER 17, 2012.
2. AERIAL IMAGE FROM NEW YORK STATEWIDE DIGITAL ORTHOIMAGERY PROGRAM, PHOTOGRAPHY CIRCA 2011



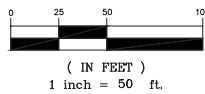
**STERLING**  
 Sterling Environmental Engineering, P.C.  
 24 Wade Road ♦ Latham, New York 12110

TEST PIT LOCATION MAP  
 TROY BELTING AND SUPPLY COMPANY  
 70 COHOES ROAD  
 TOWN OF COLONIE ALBANY CO., N.Y.



LEGEND:  
— TEST PIT LOCATIONS 28' — TOP OF BEDROCK ELEVATION CONTOUR  
● MW-1 MONITORING WELL

MAP REFERENCES:  
1. BASE MAP (INCLUDING EXISTING MONITORING WELL LOCATIONS & APPROXIMATE PROPERTY LINE), IS FROM DRAWING ENTITLED "MONITORING WELL SURVEY" BY CORNERSTONE SURVEYING & MAPPING, DECEMBER 17, 2012.  
2. AERIAL IMAGE FROM NEW YORK STATEwide DIGITAL ORTHOMAP, PHOTOGRAPHY CIRCA 2011

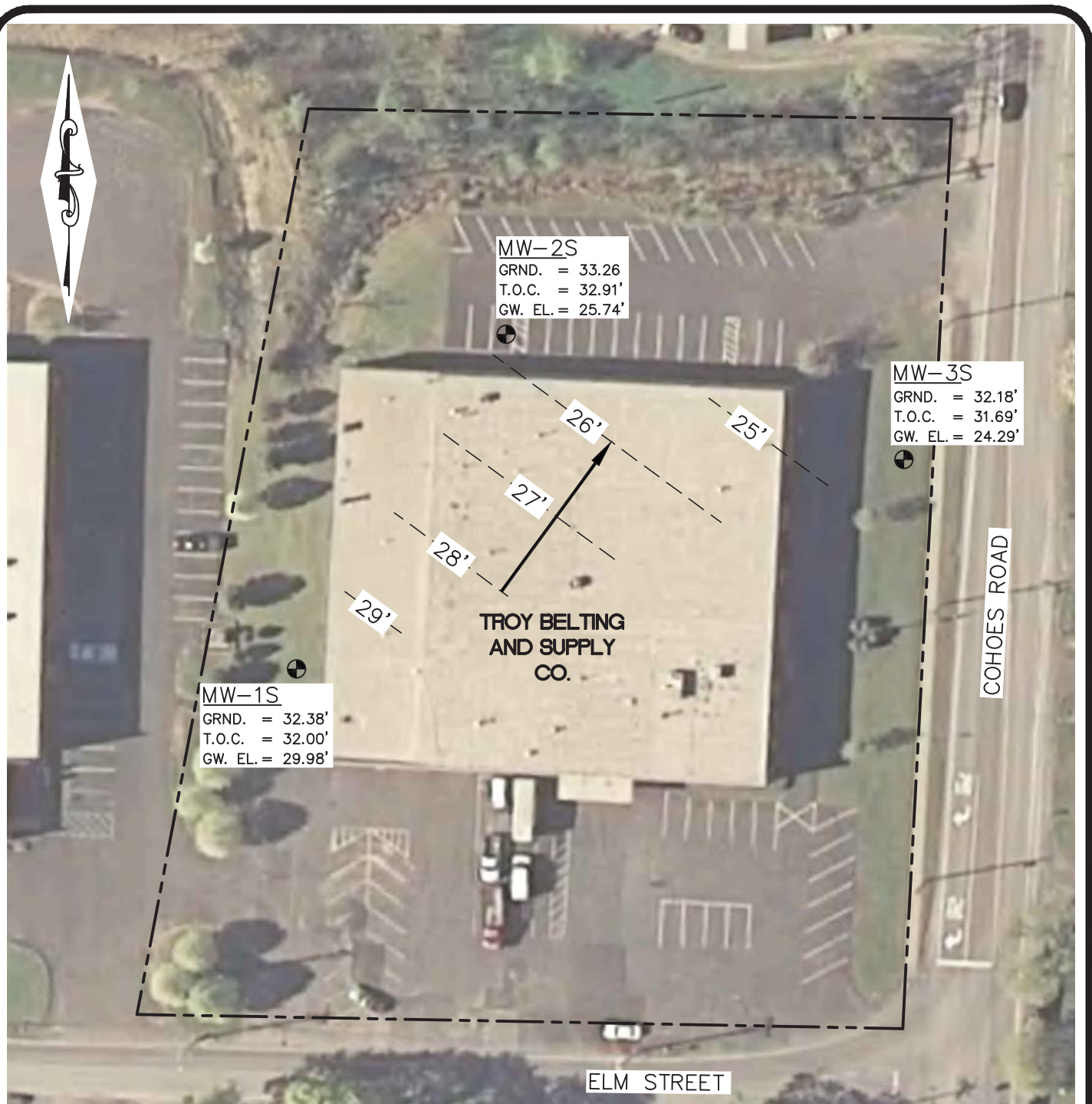


**STERLING**  
Sterling Environmental Engineering, P.C.  
24 Wade Road • Latham, New York 12110

TOP OF BEDROCK ELEVATION  
CONTOUR MAP  
**TROY BELTING AND SUPPLY COMPANY**  
70 COHOES ROAD  
TOWN OF COLONIE ALBANY CO., N.Y.

PROJ. No.: 2011-31 | DATE: 12/29/2017 | SCALE: 1" = 50' | DWG. NO. 2011-31160 | FIGURE 6





**LEGEND:**

- ⊕ MW-2S MONITORING WELL
- GRND. = 30.00' GROUND ELEVATION
- T.O.C. = 29.00' TOP OF CASING ELEVATION
- GW. = 25.00' BEDROCK GROUNDWATER ELEVATION FOR MAY 2012
- APPROXIMATE PROPERTY LINE
- -28'- - GROUNDWATER ELEVATION CONTOUR
- INFERRED GROUNDWATER FLOW DIRECTION

**MAP NOTES:**

BASE MAP, (INCLUDING WELL LOCATIONS, WELL ELEVATIONS, AND APPROXIMATE PROPERTY LINE,) IS PROVIDED BY CORNERSTONE SURVEYING & MAPPING, ENTITLED "MONITORING WELL SURVEY" FOR TROY BELTING & SUPPLY COMPANY, INC., DATED APRIL 28, 2012.

**STERLING**

Sterling Environmental Engineering, P.C.

24 Wade Road ♦ Latham, New York 12110

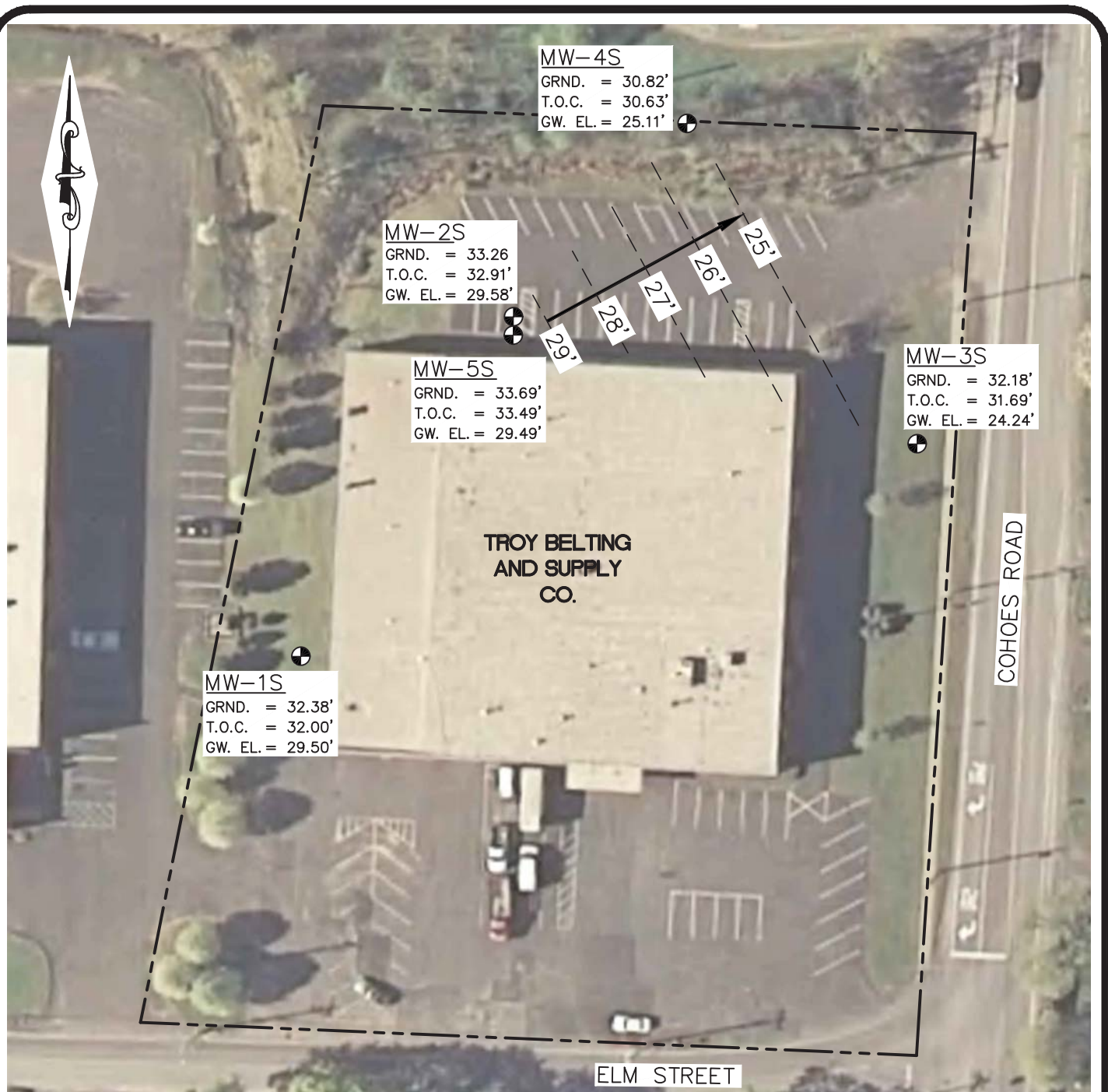
BEDROCK AQUIFER (SHALLOW ZONE) GROUNDWATER  
ELEVATION CONTOUR MAP-MAY 2012

**TROY BELTING AND SUPPLY COMPANY**  
70 COHOES ROAD

TOWN OF COLONIE

ALBANY CO., N.Y.





#### LEGEND:

- ⊕ MW-1S MONITORING WELL
- GRND. = 30.00' GROUND ELEVATION
- T.O.C. = 29.00' TOP OF CASING ELEVATION
- GW. = 25.00' BEDROCK GROUNDWATER ELEVATION FOR DECEMBER 2012
- APPROXIMATE PROPERTY LINE
- - - - - GROUNDWATER ELEVATION CONTOUR
- INFERRED GROUNDWATER FLOW DIRECTION

#### MAP NOTES:

BASE MAP, (INCLUDING EXISTING WELL LOCATIONS, EXISTING WELL ELEVATIONS AND APPROXIMATE PROPERTY LINE,) IS PROVIDED BY CORNERSTONE SURVEYING & MAPPING, ENTITLED "MONITORING WELL SURVEY" FOR TROY BELTING & SUPPLY COMPANY, INC., DATED DECEMBER 17, 2012.

# STERLING

Sterling Environmental Engineering, P.C.

24 Wade Road ♦ Latham, New York 12110

BEDROCK AQUIFER (SHALLOW ZONE) GROUNDWATER  
ELEVATION CONTOUR MAP-DECEMBER 2012

**TROY BELTING AND SUPPLY COMPANY**  
70 COHOES ROAD

TOWN OF COLONIE

ALBANY CO., N.Y.

S:\Sterling\Projects\2011 Projects\Troy Belting and Supply Co. 2011-31\Drawings\Map-Figure\2011-31041 LOW Elev Map Shallow.dwg 2018 11:33 AM



**LEGEND:**

- 28' GROUNDWATER ELEVATION CONTOUR  
(DASHED WHERE INFERRED)
- INFERRED GROUNDWATER FLOW DIRECTION
- ⊕ MW-1S  
OWEL = 28.55 MONITORING WELL LOCATION  
GROUNDWATER ELEVATION (OCTOBER 29, 2014)
- - - - - APPROXIMATE PROPERTY LINE

**MAP REFERENCES:**

1. BASE MAP: (INCLUDING EXISTING MONITORING WELL LOCATIONS & APPROXIMATE PROPERTY LINE), IS FROM DRAWING ENTITLED "MONITORING WELL SURVEY," BY CORNERSTONE SURVEYING & MAPPING, DECEMBER 17, 2012.
2. FORMER BROOK LOCATION FROM DRAWING ENTITLED "SURVEY OF PARCEL OF LAND," BY KING & DANKIN, ENGINEERING & SURVEYING, JUNE 3, 1964.
3. EXISTING SOIL BORING LOCATIONS FROM DRAWING ENTITLED "BORING LOCATION MAP" (WITHIN PHASE II REPORT), BY RUS ENVIRONMENTAL, SEPTEMBER 28, 2011.
4. AERIAL IMAGE FROM NEW YORK STATEWIDE DIGITAL ORTHOMAGERY PROGRAM, PHOTOGRAPHY CIRCA 2011.

**STERLING**  
Sterling Environmental Engineering, P.C.  
24 Wade Road • Latham, New York 12110

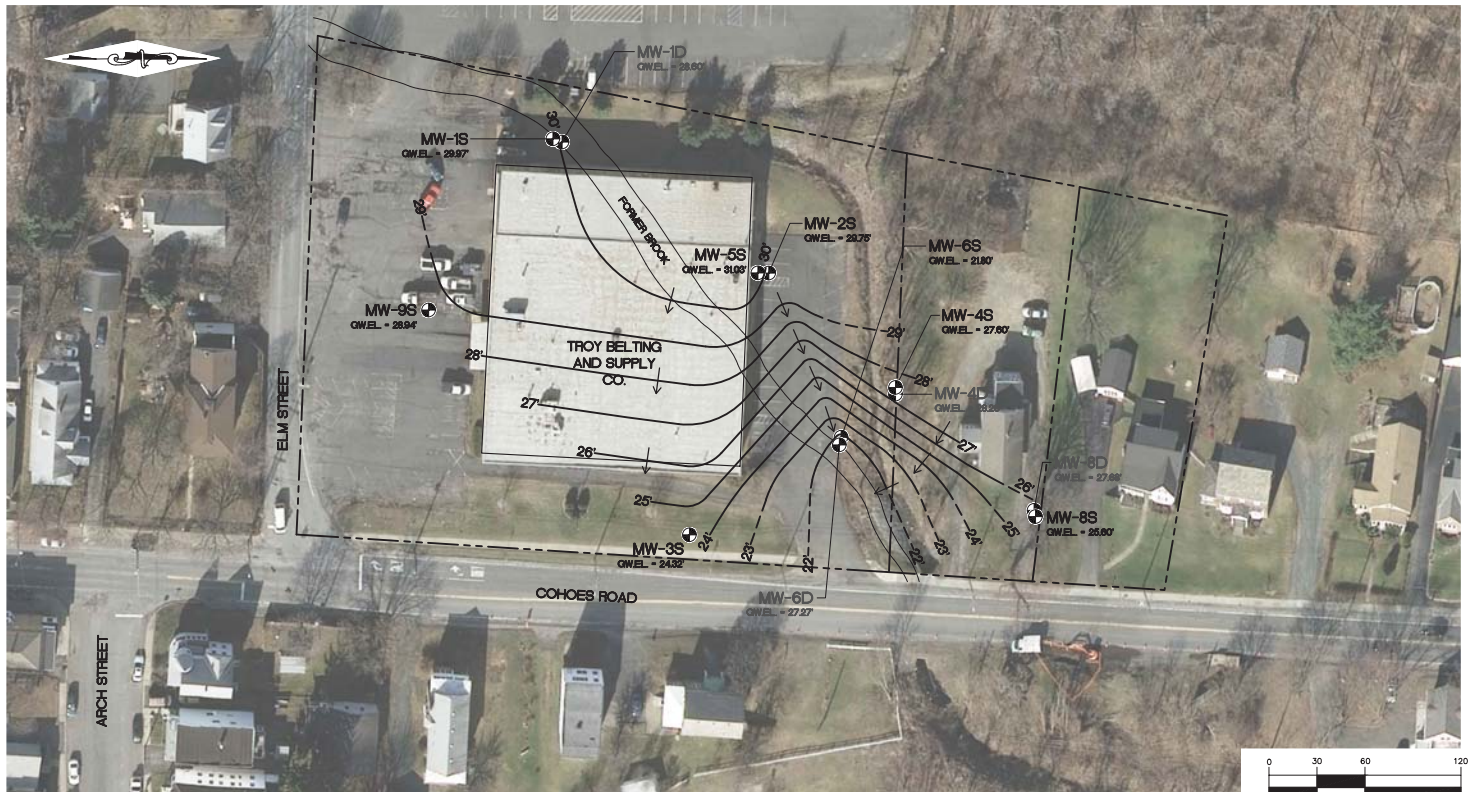
BEDROCK AQUIFER (SHALLOW ZONE) GROUNDWATER  
ELEVATION CONTOUR MAP - OCTOBER 29, 2014  
**TROY BELTING AND SUPPLY COMPANY**  
70 COHOES ROAD

TOWN OF COLONIE ALBANY CO., N.Y.

PROJ. No.: 2011-31 | DATE: 12/29/2017 | SCALE: 1" = 60' | DWG. NO. 2011-31041 | FIGURE 7c



S:\Sterling\Projects\2011 Projects\Troy Belting and Supply Co. 2011-31\Drawings\Map\Figures\2011-31067\GWElevs\Shadows-Dec2014\_L770.dwg/26/2018 10:19 AM



**LEGEND:**

- 28' GROUNDWATER ELEVATION CONTOUR  
(DASHED WHERE INFERRED)
- INFERRED GROUNDWATER FLOW DIRECTION
- MW-1S  
OWEL = 28.97  
MONITORING WELL LOCATION  
GROUNDWATER ELEVATION (DECEMBER 16, 2014)
- - - - - APPROXIMATE PROPERTY LINE

**MAP REFERENCES:**

1. BASE MAP: (INCLUDING EXISTING MONITORING WELL LOCATIONS & APPROXIMATE PROPERTY LINE), IS FROM DRAWING ENTITLED "MONITORING WELL SURVEY," BY CORNERSTONE SURVEYING & MAPPING, DECEMBER 17, 2012.
2. FORMER BROOK LOCATION FROM DRAWING ENTITLED "SURVEY OF PARCEL OF LAND," BY KING & DANKIN, ENGINEERING & SURVEYING, JUNE 3, 1964.
3. EXISTING SOIL BORING LOCATIONS FROM DRAWING ENTITLED "BORING LOCATION MAP" (WITHIN PHASE II REPORT), BY RUS ENVIRONMENTAL, SEPTEMBER 28, 2011.
4. AERIAL IMAGE FROM NEW YORK STATEWIDE DIGITAL ORTHOMAGERY PROGRAM, PHOTOGRAPHY CIRCA 2011.

**STERLING**  
Sterling Environmental Engineering, P.C.  
24 Wade Road • Latham, New York 12110

BEDROCK AQUIFER (SHALLOW ZONE) GROUNDWATER  
ELEVATION CONTOUR MAP - DECEMBER 16, 2014  
**TROY BELTING AND SUPPLY COMPANY**  
70 COHOES ROAD

TOWN OF COLONIE ALBANY CO., N.Y.

PROJ. No.: 2011-31 | DATE: 12/29/2017 | SCALE: 1" = 60' | DWG. NO. 2011-31067 | FIGURE 7d

S:\Sterling\Projects\2011\Projects\Troy Belting and Supply Co. 2011-31\Drawings\Map-Figure\2011-31089\GWL Elevation Map-Shadow-01.dwg, 2015, 15:56:09/2015 10:23 AM



**LEGEND:**

- 28' GROUNDWATER ELEVATION CONTOUR (DASHED WHERE INFERRED)
- INFERRED GROUNDWATER FLOW DIRECTION
- ⊕ MW-1S GW.ELEV. = 28.83' MONITORING WELL LOCATION GROUNDWATER ELEVATION (OCTOBER 12, 2015)
- - - APPROXIMATE PROPERTY LINE

**MAP REFERENCES:**

1. BASE MAP: (INCLUDING EXISTING MONITORING WELL LOCATIONS & APPROXIMATE PROPERTY LINE), IS FROM DRAWING ENTITLED "MONITORING WELL SURVEY," BY CORNERSTONE SURVEYING & MAPPING, DECEMBER 17, 2012.
2. FORMER BROOK LOCATION FROM DRAWING ENTITLED "SURVEY OF PARCEL OF LAND," BY KING & DANKIN, ENGINEERING & SURVEYING, JUNE 3, 1964.
3. EXISTING SOIL BORING LOCATIONS FROM DRAWING ENTITLED "BORING LOCATION MAP" (WITHIN PHASE II REPORT), BY RUS ENVIRONMENTAL, SEPTEMBER 28, 2011.
4. AERIAL IMAGE FROM NEW YORK STATEWIDE DIGITAL ORTHOMAGERY PROGRAM, PHOTOGRAPHY CIRCA 2011.

**STERLING**  
Sterling Environmental Engineering, P.C.  
24 Wade Road • Latham, New York 12110

BEDROCK AQUIFER (SHALLOW ZONE) GROUNDWATER  
ELEVATION CONTOUR MAP - OCTOBER 12, 2015  
**TROY BELTING AND SUPPLY COMPANY**  
70 COHOES ROAD  
TOWN OF COLONIE ALBANY CO., N.Y.


PROJ. No.: 2011-31	DATE: 12/29/2017	SCALE: 1" = 60'	DWG. NO. 2011-31089	FIGURE 7e
--------------------	------------------	-----------------	---------------------	-----------



S:\Sterling\Projects\2011\Projects\Troy Belting and Supply Co. 2011-31\Drawings\Map-Figure\2011-31161 GWE Map Shadow Nov\_2015\_3-77.dwg p6562018 1:166 AM



**LEGEND:**

- 28' GROUNDWATER ELEVATION CONTOUR  
(DASHED WHERE INFERRED)
- INFERRED GROUNDWATER FLOW DIRECTION
-  MW-1S  
QW.E.L. = 28.89' MONITORING WELL LOCATION  
GROUNDWATER ELEVATION (NOVEMBER 19, 2015)
- - - - - APPROXIMATE PROPERTY LINE

**MAP REFERENCES:**

1. BASE MAP: (INCLUDING EXISTING MONITORING WELL LOCATIONS & APPROXIMATE PROPERTY LINE), IS FROM DRAWING ENTITLED "MONITORING WELL SURVEY," BY CORNERSTONE SURVEYING & MAPPING, DECEMBER 17, 2012.
2. FORMER BROOK LOCATION FROM DRAWING ENTITLED "SURVEY OF PARCEL OF LAND," BY KING & DANKIN, ENGINEERING & SURVEYING, JUNE 3, 1964.
3. EXISTING SOIL BORING LOCATIONS FROM DRAWING ENTITLED "BORING LOCATION MAP" (WITHIN PHASE II REPORT), BY RUS ENVIRONMENTAL, SEPTEMBER 28, 2011.
4. AERIAL IMAGE FROM NEW YORK STATEWIDE DIGITAL ORTHOMAGERY PROGRAM, PHOTOGRAPHY CIRCA 2011.

**STERLING**  
Sterling Environmental Engineering, P.C.

24 Wade Road • Latham, New York 12110

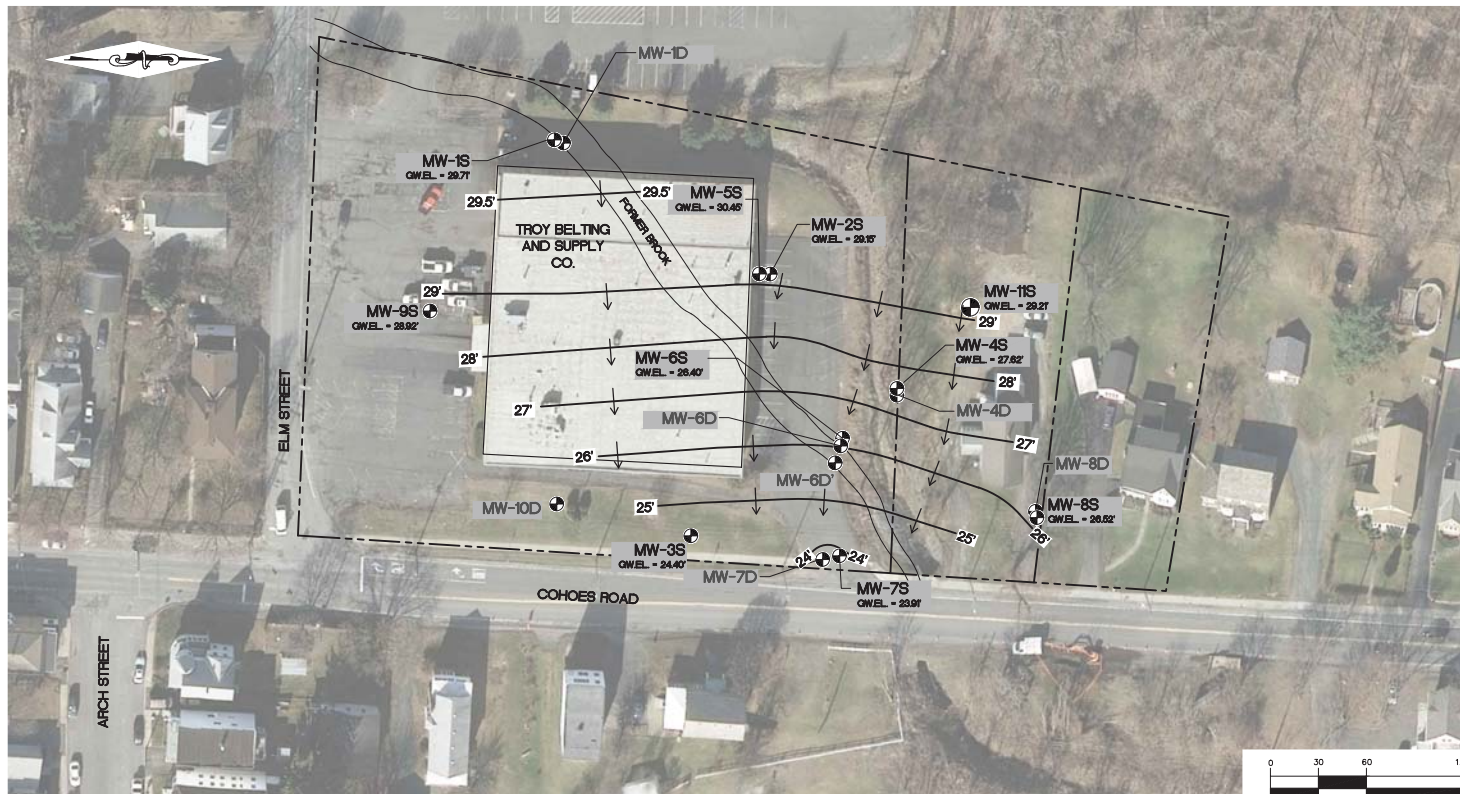
BEDROCK AQUIFER (SHALLOW ZONE) GROUNDWATER  
ELEVATION CONTOUR MAP - NOVEMBER 19, 2015  
**TROY BELTING AND SUPPLY COMPANY**  
70 COHOES ROAD

TOWN OF COLONIE

ALBANY CO., N.Y.

PROJ. No.: 2011-31 | DATE: 12/29/2017 | SCALE: 1" = 60' | DWG. NO. 2011-31161 | FIGURE 7f

S:\Subarea\2011\TroyBelting\Boring and Supply Co. - 2011-31\Drawings\Map-Figures\2011-31174\_P-70 - ShallowGW Elev  
 Map Feb 2017.dwg/2018 10:24 AM



**LEGEND:**

- 26' GROUNDWATER ELEVATION CONTOUR  
(DASHED WHERE INFERRED)
- INFERRED GROUNDWATER FLOW DIRECTION
- ⊙ MW-1S  
QWEL = 27.85' MONITORING WELL LOCATION  
GROUNDWATER ELEVATION (FEBRUARY 23, 2017)
- - - - - APPROXIMATE PROPERTY LINE

**MAP REFERENCES:**

1. BASE MAP: (INCLUDING EXISTING MONITORING WELL LOCATIONS & APPROXIMATE PROPERTY LINE), IS FROM DRAWING ENTITLED "MONITORING WELL SURVEY," BY CORNERSTONE SURVEYING & MAPPING, DECEMBER 17, 2012.
2. FORMER BROOK LOCATION FROM DRAWING ENTITLED "SURVEY OF PARCEL OF LAND," BY KING & DANKIN, ENGINEERING & SURVEYING, JUNE 3, 1964.
3. EXISTING SOIL BORING LOCATIONS FROM DRAWING ENTITLED "BORING LOCATION MAP" (WITHIN PHASE II REPORT), BY RUS ENVIRONMENTAL, SEPTEMBER 28, 2011.
4. AERIAL IMAGE FROM NEW YORK STATEWIDE DIGITAL ORTHOMAGERY PROGRAM, PHOTOGRAPHY CIRCA 2011

**STERLING**  
Sterling Environmental Engineering, P.C.

24 Wade Road • Latham, New York 12110

BEDROCK AQUIFER (SHALLOW ZONE) GROUNDWATER  
ELEVATION CONTOUR MAP - FEBRUARY 23, 2017  
TROY BELTING AND SUPPLY COMPANY  
70 COHOES ROAD

TOWN OF COLONIE ALBANY CO., N.Y.

PROJ. No.: 2011-31	DATE: 6/25/2018	SCALE: 1" = 60'	DWG. NO. 2011-31174
			FIGURE 7g



S:\Sterling\Projects\2011 Projects\Troy Belting and Supply Co. 2011-31\Drawings\Map-Figure\2011-31068\GWL Elev - Deep Oct2014.dwg 05/20/14 4:00 PM



**LEGEND:**

- 26' GROUNDWATER ELEVATION CONTOUR (DASHED WHERE INFERRED)
- INFERRED GROUNDWATER FLOW DIRECTION
- MW-1D  
OUEL = 28.07  
MONITORING WELL LOCATION  
GROUNDWATER ELEVATION (OCTOBER 29, 2014)
- - - APPROXIMATE PROPERTY LINE

**MAP REFERENCES:**

1. BASE MAP: (INCLUDING EXISTING MONITORING WELL LOCATIONS & APPROXIMATE PROPERTY LINE), IS FROM DRAWING ENTITLED "MONITORING WELL SURVEY," BY CORNERSTONE SURVEYING & MAPPING, DECEMBER 17, 2012.
2. FORMER BROOK LOCATION FROM DRAWING ENTITLED "SURVEY OF PARCEL OF LAND," BY KING & DANKIN, ENGINEERING & SURVEYING, JUNE 3, 1964.
3. EXISTING SOIL BORING LOCATIONS FROM DRAWING ENTITLED "BORING LOCATION MAP" (WITHIN PHASE II REPORT), BY RUS ENVIRONMENTAL, SEPTEMBER 28, 2011.
4. AERIAL IMAGE FROM NEW YORK STATEWIDE DIGITAL ORTHOMAGERY PROGRAM, PHOTOGRAPHY CIRCA 2011.

**STERLING**  
Sterling Environmental Engineering, P.C.  
24 Wade Road • Latham, New York 12110

BEDROCK AQUIFER (DEEP ZONE) GROUNDWATER  
ELEVATION CONTOUR MAP - OCTOBER 29, 2014  
**TROY BELTING AND SUPPLY COMPANY**  
70 COHOES ROAD

TOWN OF COLONIE ALBANY CO., N.Y.

PROJ. No.: 2011-31 | DATE: 12/29/2017 | SCALE: 1" = 60' | DWG. NO. 2011-31068 | FIGURE 8a

S:\Sterling\Projects\2011 Projects\Troy Belting and Supply Co. 2011-31 Drawings\Map-1 Figure 2011-31044\GWL Map-1.Dwg, Dec. 16, 2014 10:53 AM

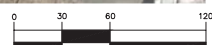


#### LEGEND:

- 26' GROUNDWATER ELEVATION CONTOUR (DASHED WHERE INFERRED)
- INFERRED GROUNDWATER FLOW DIRECTION
- MW-1D  
G.W.E.L. = 28.00' MONITORING WELL LOCATION GROUNDWATER ELEVATION (DECEMBER 16, 2014)
- - - APPROXIMATE PROPERTY LINE

#### MAP REFERENCES:

1. BASE MAP: (INCLUDING EXISTING MONITORING WELL LOCATIONS & APPROXIMATE PROPERTY LINE), IS FROM DRAWING ENTITLED "MONITORING WELL SURVEY," BY CORNERSTONE SURVEYING & MAPPING, DECEMBER 17, 2012.
2. FORMER BROOK LOCATION FROM DRAWING ENTITLED "SURVEY OF PARCEL OF LAND," BY KING & DANKIN, ENGINEERING & SURVEYING, JUNE 3, 1964.
3. EXISTING SOIL BORING LOCATIONS FROM DRAWING ENTITLED "BORING LOCATION MAP" (WITHIN PHASE II REPORT), BY RUS ENVIRONMENTAL, SEPTEMBER 28, 2011.
4. AERIAL IMAGE FROM NEW YORK STATEWIDE DIGITAL ORTHOMAGERY PROGRAM, PHOTOGRAPHY CIRCA 2011.



( IN FEET )  
1 inch = 60 ft.

**STERLING**  
Sterling Environmental Engineering, P.C.

24 Wade Road • Latham, New York 12110

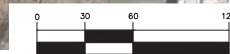
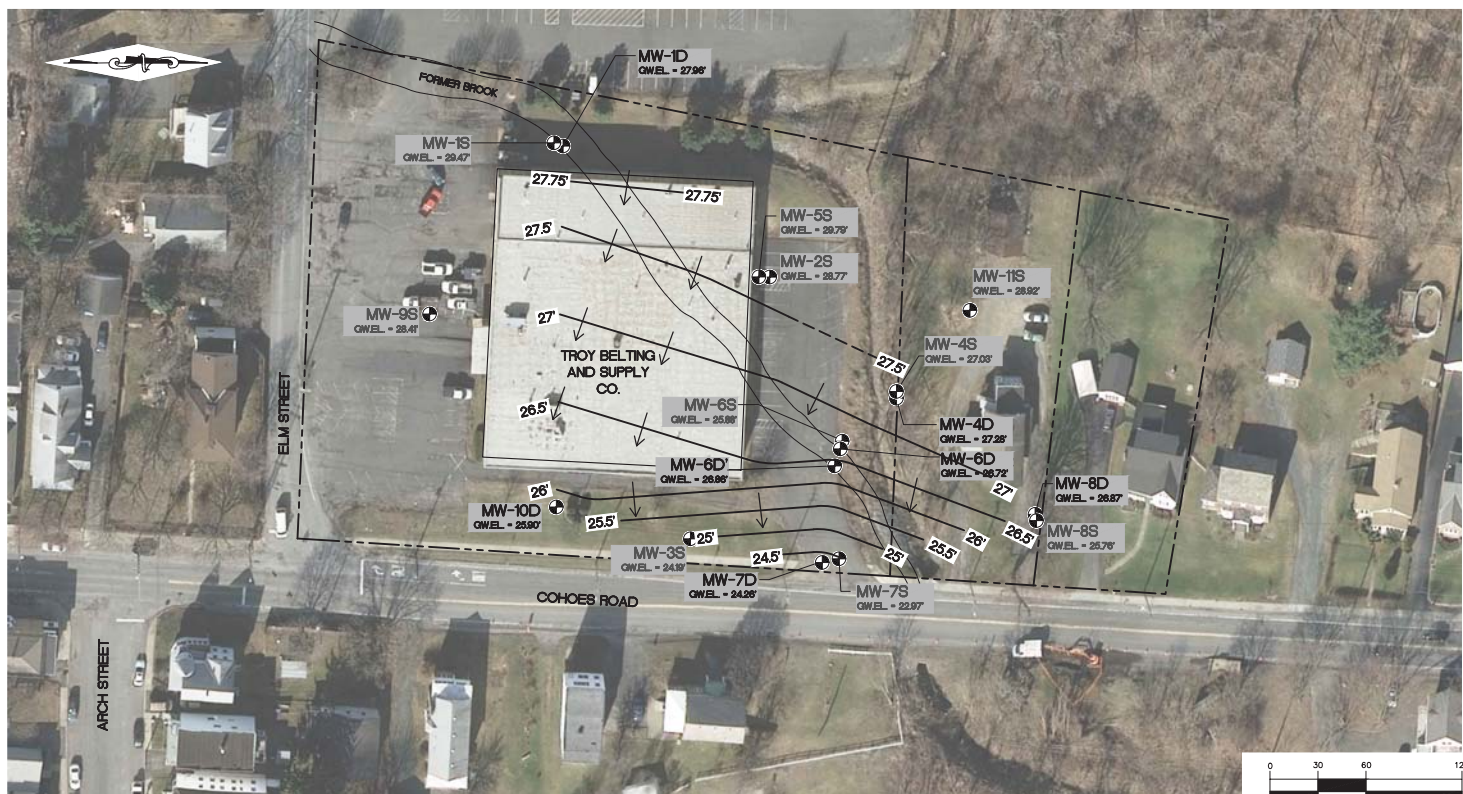
BEDROCK AQUIFER (DEEP ZONE) GROUNDWATER  
ELEVATION CONTOUR MAP - DECEMBER 16, 2014  
TROY BELTING AND SUPPLY COMPANY  
70 COHOES ROAD

TOWN OF COLONIE ALBANY CO., N.Y.

PROJ. No.: 2011-31 | DATE: 12/29/2017 | SCALE: 1" = 60' | DWG. NO. 2011-31044 | FIGURE 8b



S:\Sterling\Projects\2011 Projects\Troy Belting and Supply Co.  
2011-311 Drawings Map - Figure 2011-31162.GW Elev Map - Nov-2015, P & S.dwg 2/26/2018 11:49 AM



( IN FEET )  
1 inch = 60 ft.

#### LEGEND:

- 26' GROUNDWATER ELEVATION CONTOUR  
(DASHED WHERE INFERRED)
- INFERRED GROUNDWATER FLOW DIRECTION
- MW-1D  
GW.E.L. = 28.10' MONITORING WELL LOCATION  
GROUNDWATER ELEVATION (NOVEMBER 19, 2015)
- - - - - APPROXIMATE PROPERTY LINE

#### MAP REFERENCES:

1. BASE MAP: (INCLUDING EXISTING MONITORING WELL LOCATIONS & APPROXIMATE PROPERTY LINE), IS FROM DRAWING ENTITLED "MONITORING WELL SURVEY," BY CORNERSTONE SURVEYING & MAPPING, DECEMBER 17, 2012.
2. FORMER BROOK LOCATION FROM DRAWING ENTITLED "SURVEY OF PARCEL OF LAND," BY KING & DANKIN, ENGINEERING & SURVEYING, JUNE 3, 1964.
3. EXISTING SOIL BORING LOCATIONS FROM DRAWING ENTITLED "BORING LOCATION MAP" (WITHIN PHASE II REPORT), BY RUS ENVIRONMENTAL, SEPTEMBER 28, 2011.
4. AERIAL IMAGE FROM NEW YORK STATEWIDE DIGITAL ORTHOMAGERY PROGRAM, PHOTOGRAPHY CIRCA 2011.

**STERLING**  
Sterling Environmental Engineering, P.C.

24 Wade Road • Latham, New York 12110

BEDROCK AQUIFER (DEEP ZONE) GROUNDWATER  
ELEVATION CONTOUR MAP - NOVEMBER 19, 2015  
**TROY BELTING AND SUPPLY COMPANY**  
70 COHOES ROAD

TOWN OF COLONIE ALBANY CO., N.Y.

PROJ. No.: 2011-31	DATE: 12/29/2017	SCALE: 1" = 60'	DWG. NO. 2011-31162	FIGURE 8c
--------------------	------------------	-----------------	---------------------	-----------

K:\Studies\Projects\2017 Projects\Troy Belting and Supply Co. - 2011-31 Drawings - Map Figures\2017-31-175-8400 - Deep GW Elev Map Feb 23 2017.dwg (2/23/2017 1:05:43 AM)



LEGEND:

- 26' GROUNDWATER ELEVATION CONTOUR (DASHED WHERE INFERRED)
- INFERRED GROUNDWATER FLOW DIRECTION
- MW-1D GW.ELEV. = 28.37 MONITORING WELL LOCATION GROUNDWATER ELEVATION (FEBRUARY 23, 2017)
- - - APPROXIMATE PROPERTY LINE

MAP REFERENCES:

1. BASE MAP: (INCLUDING EXISTING MONITORING WELL LOCATIONS & APPROXIMATE PROPERTY LINE), IS FROM DRAWING ENTITLED "MONITORING WELL SURVEY," BY CORNERSTONE SURVEYING & MAPPING, DECEMBER 17, 2012.
2. FORMER BROOK LOCATION FROM DRAWING ENTITLED "SURVEY OF PARCEL OF LAND," BY KING & DANGSON, ENGINEERING & SURVEYING, JUNE 3, 1964.
3. EXISTING SOIL BORING LOCATIONS FROM DRAWING ENTITLED "BORING LOCATION MAP" (WITHIN PHASE II REPORT), BY RUS ENVIRONMENTAL, SEPTEMBER 28, 2011.
4. AERIAL IMAGE FROM NEW YORK STATEWIDE DIGITAL ORTHOMAGERY PROGRAM, PHOTOGRAPHY CIRCA 2011.

**STERLING**  
Sterling Environmental Engineering, P.C.  
24 Wade Road • Latham, New York 12110

BEDROCK AQUIFER (DEEP ZONE) GROUNDWATER  
ELEVATION CONTOUR MAP - FEBRUARY 23, 2017  
TROY BELTING AND SUPPLY COMPANY  
70 COHOES ROAD

TOWN OF COLONIE ALBANY CO., N.Y.

PROJ. No.: 2011-31 | DATE: 12/29/2017 | SCALE: 1" = 60' | DWG. NO. 2011-31175 | FIGURE 8d





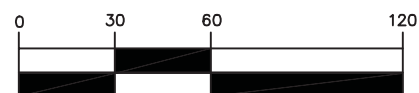
**LEGEND:**



EXISTING MONITORING WELL



APPROXIMATE PROPERTY LINE



( IN FEET )

1 inch = 60 ft.

**MAP REFERENCES:**

1. BASE MAP: (INCLUDING EXISTING MONITORING WELL LOCATIONS & APPROXIMATE PROPERTY LINE), IS FROM DRAWING ENTITLED "MONITORING WELL SURVEY," BY CORNERSTONE SURVEYING & MAPPING, DECEMBER 17, 2012.
2. AERIAL IMAGE FROM NEW YORK STATEWIDE DIGITAL ORTHOIMAGERY PROGRAM, PHOTOGRAPHY CIRCA 2011

**STERLING**

Sterling Environmental Engineering, P.C.

24 Wade Road ♦ Latham, New York 12110

TETRACHLOROETHENE (PCE) GROUNDWATER  
CONCENTRATIONS (MAY 4, 2012)  
**TROY BELTING AND SUPPLY COMPANY**  
70 COHOES ROAD

TOWN OF COLONIE

ALBANY CO., N.Y.



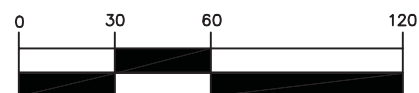
#### LEGEND:



EXISTING MONITORING WELL



APPROXIMATE PROPERTY LINE



( IN FEET )

1 inch = 60 ft.

#### MAP REFERENCES:

1. BASE MAP: (INCLUDING EXISTING MONITORING WELL LOCATIONS & APPROXIMATE PROPERTY LINE), IS FROM DRAWING ENTITLED "MONITORING WELL SURVEY," BY CORNERSTONE SURVEYING & MAPPING, DECEMBER 17, 2012.
2. AERIAL IMAGE FROM NEW YORK STATEWIDE DIGITAL ORTHOIMAGERY PROGRAM, PHOTOGRAPHY CIRCA 2011

# STERLING

Sterling Environmental Engineering, P.C.

24 Wade Road ♦ Latham, New York 12110

TETRACHLOROETHENE (PCE) GROUNDWATER  
CONCENTRATIONS (DECEMBER 20, 2012)  
**TROY BELTING AND SUPPLY COMPANY**  
70 COHOES ROAD

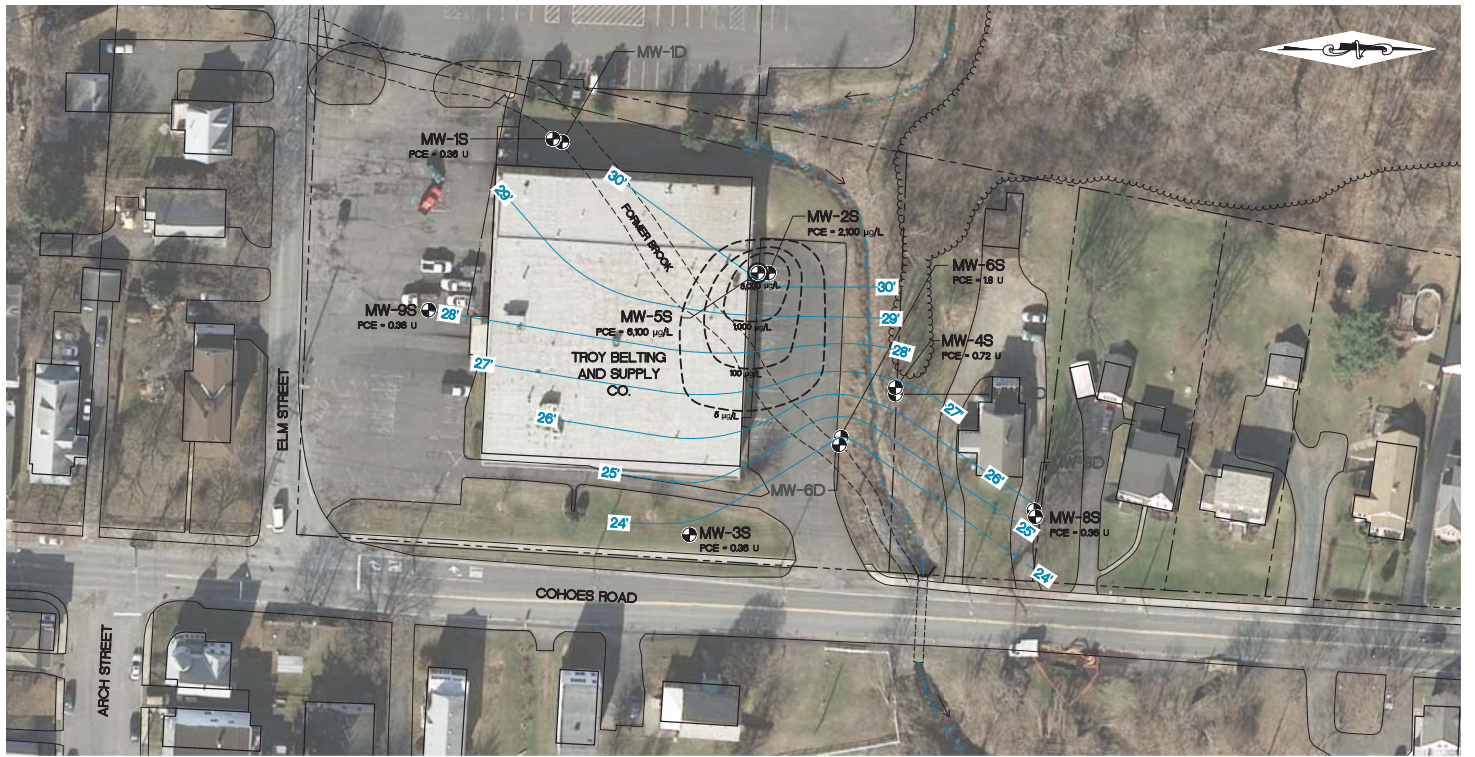
TOWN OF COLONIE

ALBANY CO., N.Y.

PROJ. No.: 2011-31 | DATE: 12/29/2017 | SCALE: 1" = 60' | DWG. NO. 2011-31071 | FIGURE 9b



S:\Sterling\Projects\2011\Projects\Troy Belting and Supply Co.  
2011-31\Drawings\Map\Figure 2011-31045PCE-Shallow-2-Final.dwg, 20181110 AM



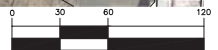
#### LEGEND

- TETRACHLOROETHENE (PCE) ISOCONCENTRATION CONTOUR ( $\mu\text{g/L}$ )
- 28' GROUNDWATER ELEVATION CONTOUR, OCTOBER 31, 2014 (DASHED WHERE INFERRED)
- MW-4S PCE = 18 U MONITORING WELL LOCATION WITH ANALYTICAL RESULTS FOR PCE (OCTOBER, 2014)
- APPROXIMATE PROPERTY LINE
- CENTER LINE OF STREAM
- STORM SEWER
- TREE LINE

U — COMPOUND WAS NOT DETECTED AT OR ABOVE THE LABORATORY METHOD DETECTION LIMIT.

#### MAP REFERENCES:

1. BASE MAP: (INCLUDING EXISTING MONITORING WELL LOCATIONS & APPROXIMATE PROPERTY LINE), IS FROM DRAWING ENTITLED "MONITORING WELL SURVEY," BY CORNERSTONE SURVEYING & MAPPING, DECEMBER 17, 2012.
2. FORMER BROOK LOCATION FROM DRAWING ENTITLED "SURVEY OF PARCEL OF LAND," BY KING & DANSKIN, ENGINEERING & SURVEYING, JUNE 3, 1964.



( IN FEET )  
1 inch = 60 ft.

**STERLING**  
Sterling Environmental Engineering, P.C.

24 Wade Road • Latham, New York 12110

TETRACHLOROETHENE (PCE) GROUNDWATER CONCENTRATIONS—  
BEDROCK AQUIFER (SHALLOW ZONE, OCTOBER 2014)  
**TROY BELTING AND SUPPLY COMPANY**  
70 COHOES ROAD

TOWN OF COLONIE ALBANY CO., N.Y.

PROJ. No.: 2011-31 | DATE: 12/29/2017 | SCALE: 1" = 60' | DWG. NO. 2011-31045 | FIGURE 9c

S:\Projects\2011 Projects\Troy Belting and Supply Co. -  
2011-31170\Mapa - Figures\2011-31170\_PCE-Shallow\_Fig.dwg C:\DWG\2011-31170\_PCE-Shallow\_Fig.dwg 12:15 PM



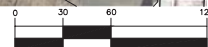
#### LEGEND

- TETRACHLOROETHENE (PCE) ISOCONCENTRATION CONTOUR ( $\mu\text{g/L}$ )
- 28' GROUNDWATER ELEVATION CONTOUR, NOVEMBER, 2015 (DASHED WHERE INFERRED)
- MW-4S  
PCE = 12 U  
MONITORING WELL LOCATION WITH ANALYTICAL RESULTS FOR PCE (NOVEMBER 2015)
- APPROXIMATE PROPERTY LINE
- CENTER LINE OF STREAM
- STORM SEWER
- TREE LINE

U — COMPOUND WAS NOT DETECTED AT OR ABOVE THE LABORATORY METHOD DETECTION LIMIT.

#### MAP REFERENCES:

1. BASE MAP: (INCLUDING EXISTING MONITORING WELL LOCATIONS & APPROXIMATE PROPERTY LINE), IS FROM DRAWING ENTITLED "MONITORING WELL SURVEY," BY CORNERSTONE SURVEYING & MAPPING, DECEMBER 17, 2012.
2. FORMER BROOK LOCATION FROM DRAWING ENTITLED "SURVEY OF PARCEL OF LAND," BY KING & DANSKIN, ENGINEERING & SURVEYING, JUNE 3, 1964.



( IN FEET )  
1 inch = 60 ft.

**STERLING**  
Sterling Environmental Engineering, P.C.

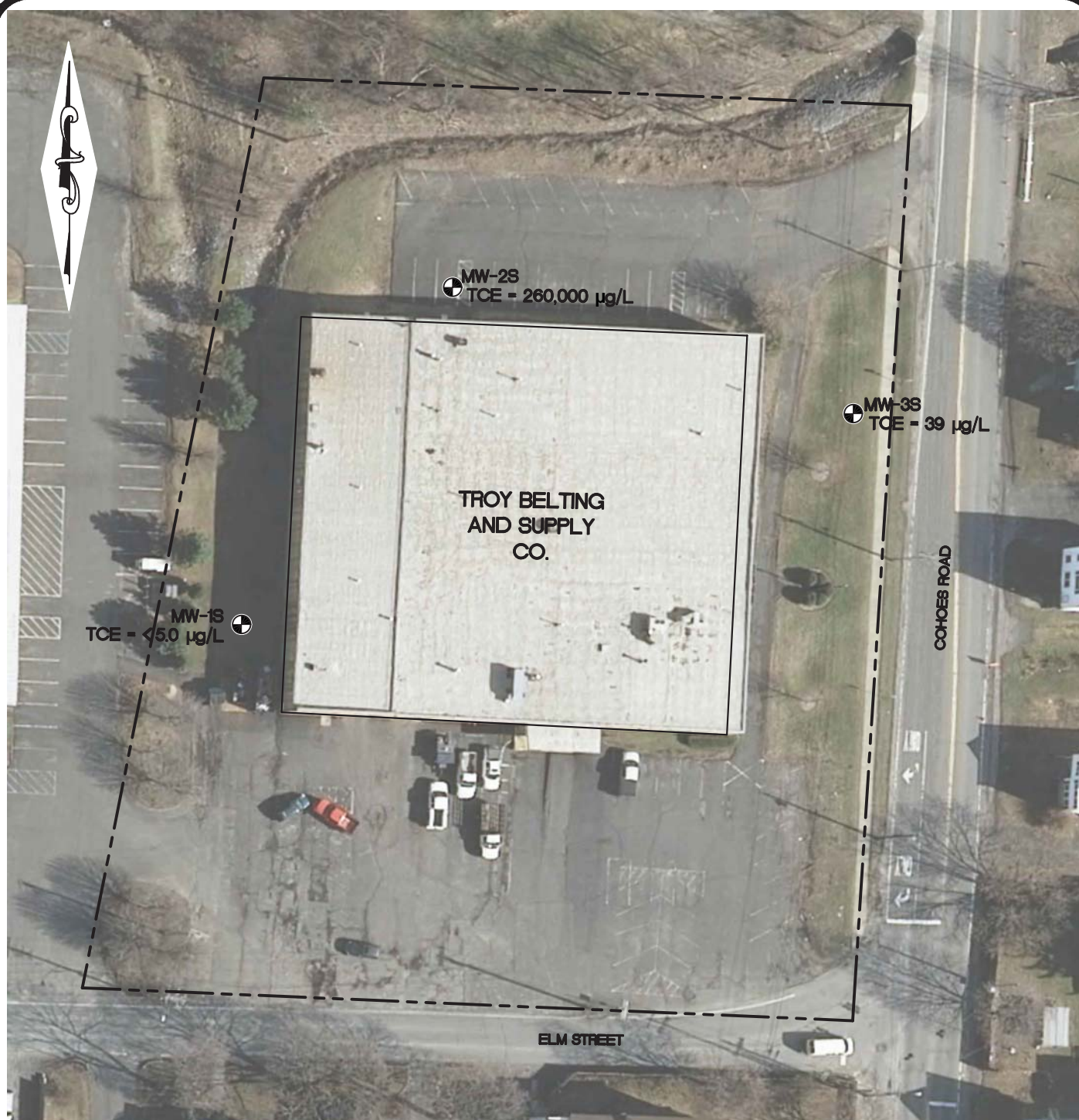
24 Wade Road • Latham, New York 12110

TETRACHLOROETHENE (PCE) GROUNDWATER CONCENTRATIONS—  
BEDROCK AQUIFER (SHALLOW ZONE, NOVEMBER 2015)  
**TROY BELTING AND SUPPLY COMPANY**  
70 COHOES ROAD

TOWN OF COLONIE ALBANY CO., N.Y.

PROJ. No.: 2011-31 | DATE: 12/29/2017 | SCALE: 1" = 60' | DWG. NO. 2011-31170 | FIGURE 9d





**LEGEND:**

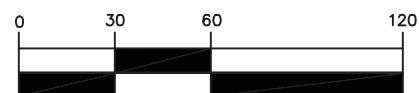


**MW-1S**

MONITORING WELL



APPROXIMATE PROPERTY LINE



( IN FEET )

1 inch = 60 ft.

**MAP REFERENCES:**

1. BASE MAP: (INCLUDING EXISTING MONITORING WELL LOCATIONS & APPROXIMATE PROPERTY LINE), IS FROM DRAWING ENTITLED "MONITORING WELL SURVEY," BY CORNERSTONE SURVEYING & MAPPING, DECEMBER 17, 2012.
2. AERIAL IMAGE FROM NEW YORK STATEWIDE DIGITAL ORTHOIMAGERY PROGRAM, PHOTOGRAPHY CIRCA 2011

**STERLING**

Sterling Environmental Engineering, P.C.

24 Wade Road ♦ Latham, New York 12110

TRICHLOROETHENE (TCE) GROUNDWATER  
CONCENTRATIONS (MAY 4, 2012)  
**TROY BELTING AND SUPPLY COMPANY**  
70 COHOES ROAD

TOWN OF COLONIE

ALBANY CO., N.Y.

PROJ. No.: 2011-31 | DATE: 12/29/2017 | SCALE: 1" = 60' | DWG. NO. 2011-31074 | FIGURE 10a



**LEGEND:**



**MW-1S**

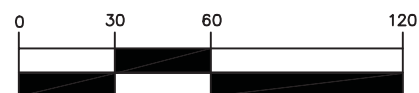
MONITORING WELL



APPROXIMATE PROPERTY LINE

**MAP REFERENCES:**

1. BASE MAP: (INCLUDING EXISTING MONITORING WELL LOCATIONS & APPROXIMATE PROPERTY LINE), IS FROM DRAWING ENTITLED "MONITORING WELL SURVEY," BY CORNERSTONE SURVEYING & MAPPING, DECEMBER 17, 2012.
2. AERIAL IMAGE FROM NEW YORK STATEWIDE DIGITAL ORTHOIMAGERY PROGRAM, PHOTOGRAPHY CIRCA 2011



( IN FEET )

1 inch = 60 ft.

**STERLING**

Sterling Environmental Engineering, P.C.

24 Wade Road ♦ Latham, New York 12110

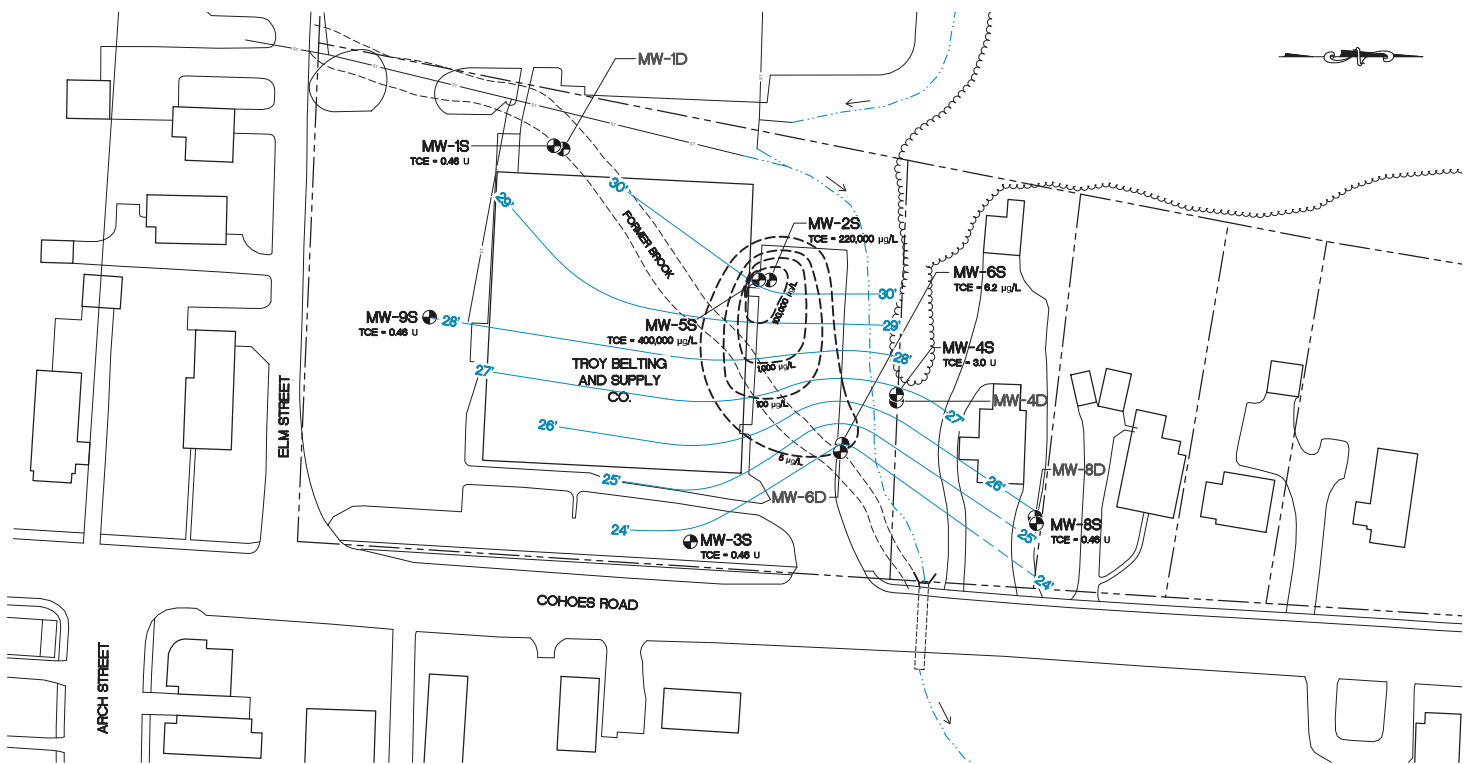
TRICHLOROETHENE (TCE) GROUNDWATER  
CONCENTRATIONS (DECEMBER 20, 2012)  
**TROY BELTING & SUPPLY CO.**  
70 COHOES ROAD

TOWN OF COLONIE

ALBANY CO., N.Y.

PROJ. No.: 2011-31 | DATE: 2/21/14 | SCALE: 1" = 60' | DWG. NO. 2011-31075 | FIGURE 10b





**LEGEND**

--- TRICHLOROETHENE (TCE) ISOCONCENTRATION CONTOUR (µg/L)

28' GROUNDWATER ELEVATION CONTOUR, OCTOBER 31, 2014 (DASHED WHERE INFERRED)

MW-4S TCE = 9.0 U MONITORING WELL LOCATION WITH ANALYTICAL RESULTS FOR TCE (OCTOBER 2014)

--- APPROXIMATE PROPERTY LINE

--- CENTER LINE OF STREAM

--- STORM SEWER

--- TREE LINE

U - COMPOUND WAS NOT DETECTED AT OR ABOVE THE LABORATORY METHOD DETECTION LIMIT.

**MAP REFERENCES:**

1. BASE MAP: (INCLUDING EXISTING MONITORING WELL LOCATIONS & APPROXIMATE PROPERTY LINE), IS FROM DRAWING ENTITLED "MONITORING WELL SURVEY," BY CORNERSTONE SURVEYING & MAPPING, DECEMBER 17, 2012.
2. FORMER BROOK LOCATION FROM DRAWING ENTITLED "SURVEY OF PARCEL OF LAND," BY KING & DANSKIN, ENGINEERING & SURVEYING, JUNE 3, 1964.

**STERLING**  
Sterling Environmental Engineering, P.C.

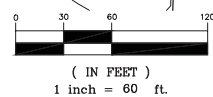
24 Wade Road • Latham, New York 12110

TRICHLOROETHENE (TCE) GROUNDWATER CONCENTRATIONS - BEDROCK AQUIFER (SHALLOW ZONE, OCTOBER 2014)  
**TROY BELTING AND SUPPLY COMPANY**  
70 COHOES ROAD

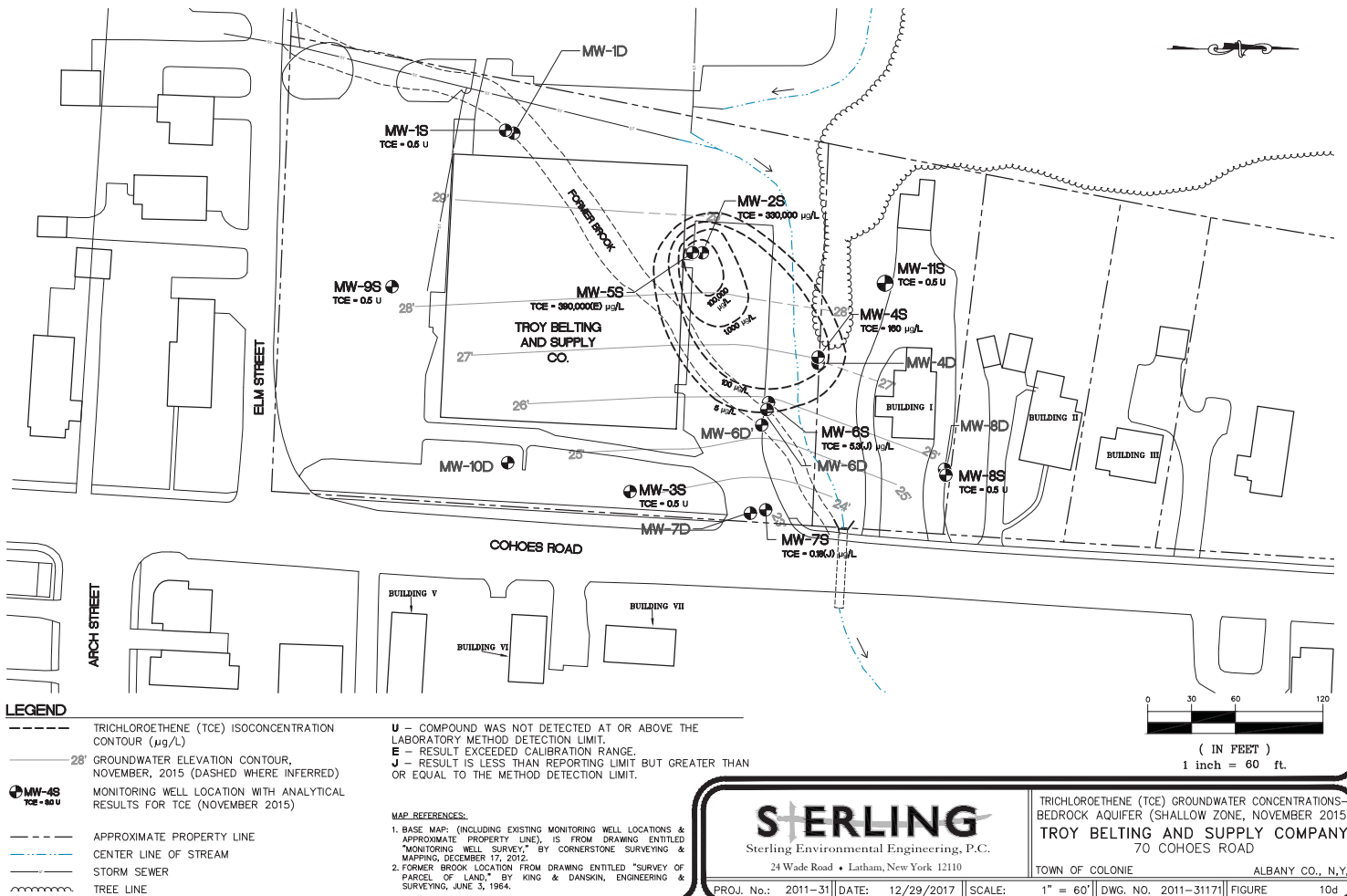
TOWN OF COLONIE

ALBANY CO., N.Y.

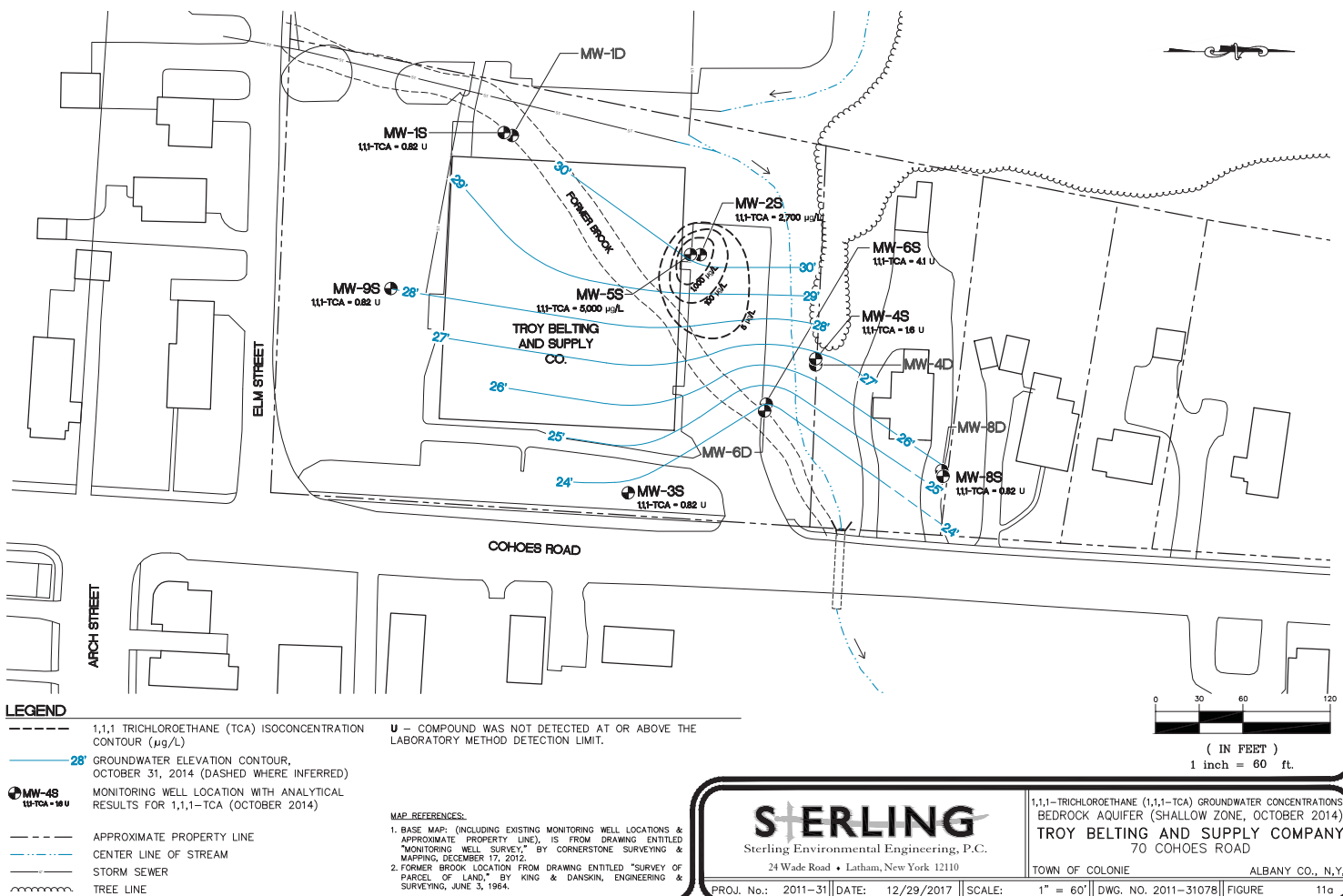
PROJ. No.: 2011-31 | DATE: 12/29/2017 | SCALE: 1" = 60' | DWG. NO. 2011-31046 | FIGURE 10c



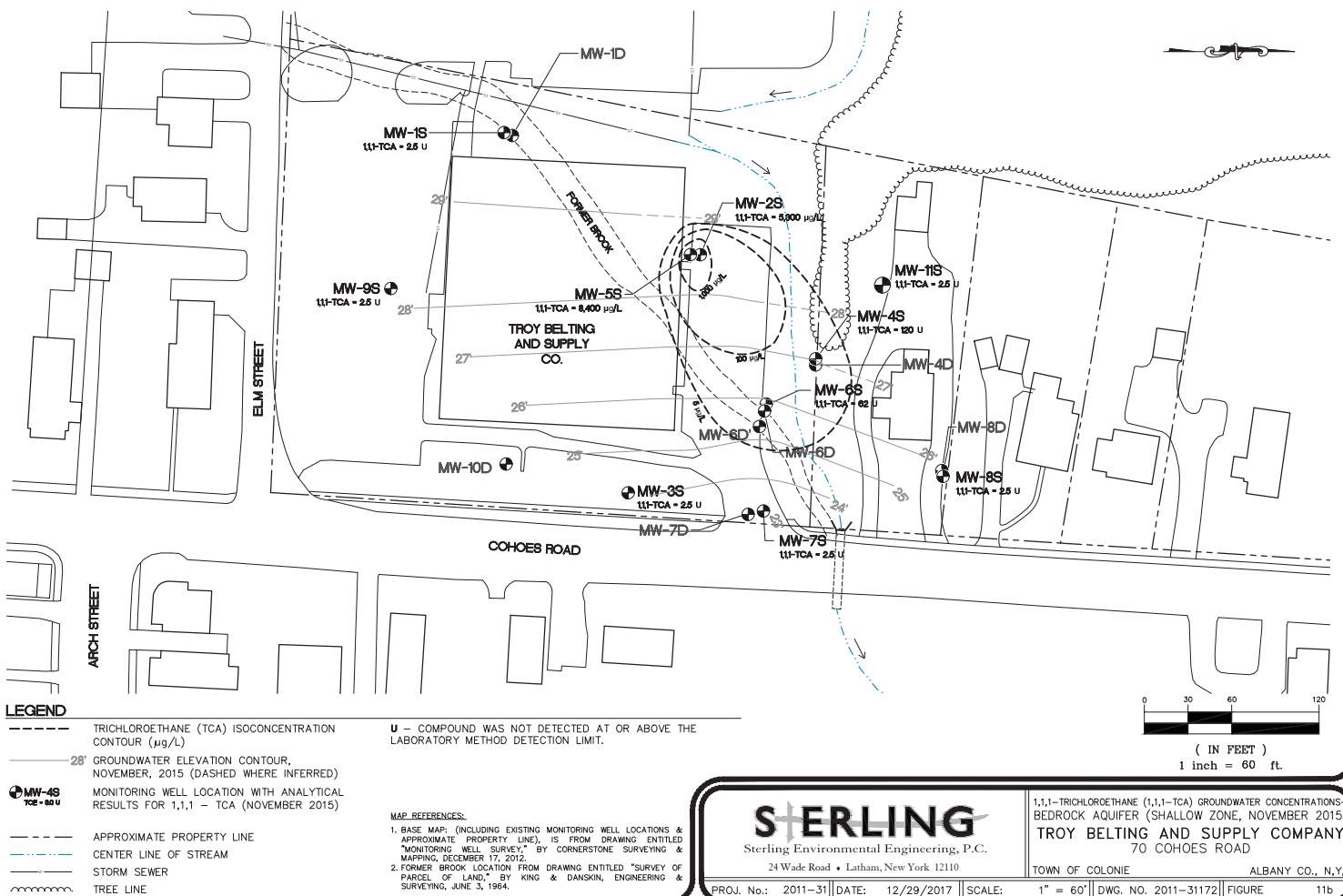
S:\Working\Projects\2011 Projects\Troy Belting and Supply Co. - 2011-31\Drawings-Maps-Figures\2011-31171\_TCE-Shallow.dwg 12/29/2017 3:18 PM





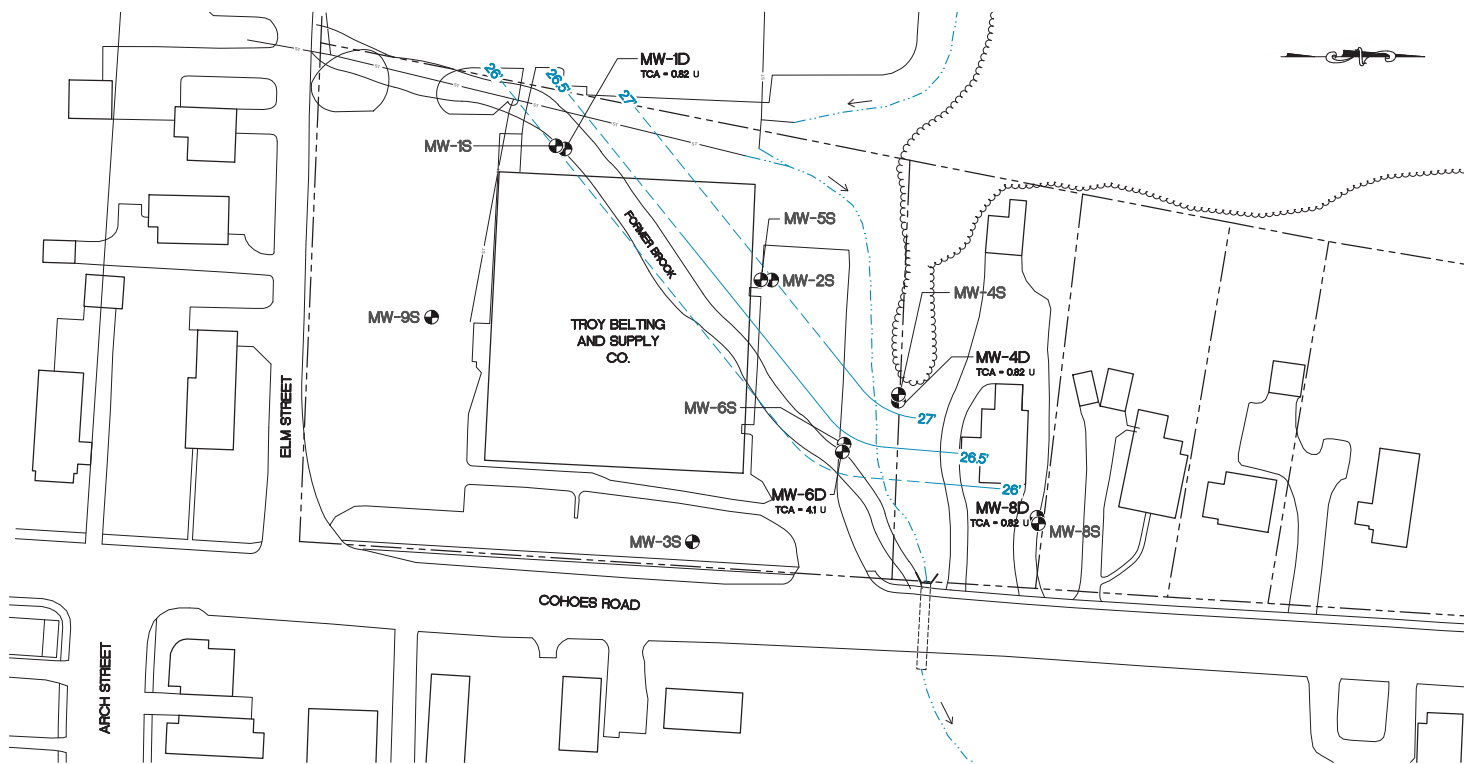


S:\Projects\2011\Projects\Troy Belting and Supply Co. - 2011-31\Drawings-Maps-Figures\2011-31172\_TCA-Shallow\_Z-Hung CAD  
6/25/2018 12:50 PM





S:\Sterling\Projects\2011\Projects\Troy Belting and Supply Co.  
2011-31\Drawings\Map Figure\DWG\11-31079\TCA Deep Aquifer 11-31.dwg 26/10/18 11:21 AM



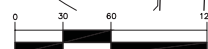
# LEGEND

- 26' GROUNDWATER ELEVATION CONTOUR, OCTOBER 31, 2014 (DASHED WHERE INFERRED)
- 26.5' GROUNDWATER ELEVATION CONTOUR, OCTOBER 31, 2014 (DASHED WHERE INFERRED)
- 27' GROUNDWATER ELEVATION CONTOUR, OCTOBER 31, 2014 (DASHED WHERE INFERRED)
- MONITORING WELL LOCATION WITH ANALYTICAL RESULTS FOR 1,1,1-TCA (OCTOBER 2014)
- APPROXIMATE PROPERTY LINE
- CENTER LINE OF STREAM
- STORM SEWER
- TREE LINE

U — COMPOUND WAS NOT DETECTED AT OR ABOVE THE LABORATORY METHOD DETECTION LIMIT.

## MAP REFERENCES:

1. BASE MAP: (INCLUDING EXISTING MONITORING WELL LOCATIONS & APPROXIMATE PROPERTY LINE), IS FROM DRAWING ENTITLED "MONITORING WELL SURVEY," BY CORNERSTONE SURVEYING & MAPPING, DECEMBER 17, 2012.
2. FORMER BROOK LOCATION FROM DRAWING ENTITLED "SURVEY OF PARCEL OF LAND," BY KING & DANSKIN, ENGINEERING & SURVEYING, JUNE 3, 1964.



( IN FEET )  
1 inch = 60 ft.

**STERLING**  
Sterling Environmental Engineering, P.C.

24 Wade Road • Latham, New York 12110

1,1,1-TRICHLOROETHANE (1,1,1-TCA) GROUNDWATER CONCENTRATIONS—  
BEDROCK AQUIFER (DEEP ZONE, OCTOBER 2014)  
**TROY BELTING AND SUPPLY COMPANY**  
70 COHOES ROAD

TOWN OF COLONIE

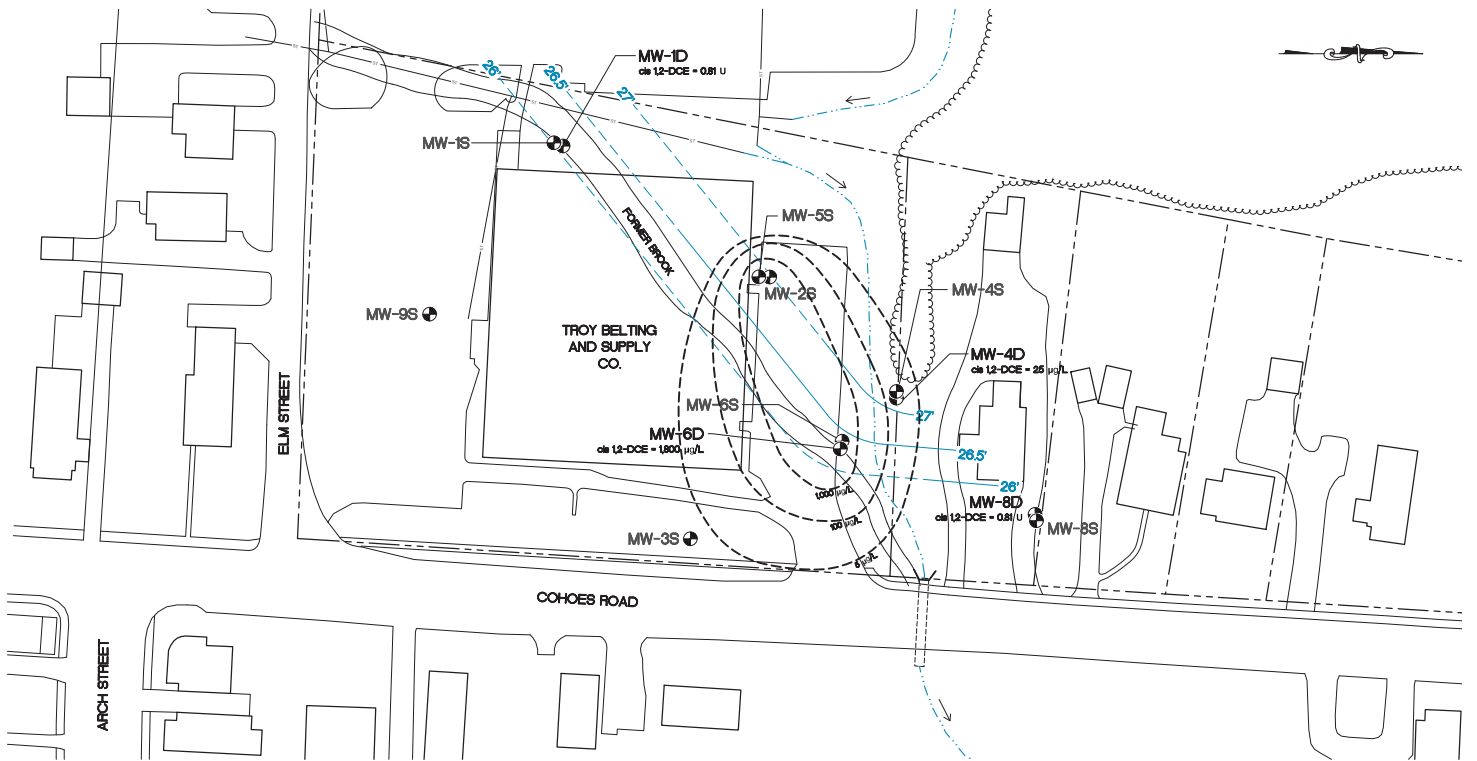
ALBANY CO., N.Y.

PROJ. No.: 2011-31	DATE: 12/29/2017	SCALE: 1" = 60'	DWG. NO. 2011-31079	FIGURE 11c
--------------------	------------------	-----------------	---------------------	------------





S:\Sterling\Projects\2011\TroyBelting\Troy Belting and Supply Co.  
2011-31\Drawings\Map-Figure\2011-31052.DCE.Dwg J:\2b.dwg 26/10/18 11:24 AM



#### LEGEND

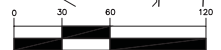
- cis 1,2-DICHLOROETHENE (cis 1,2-DCE) ISOCONCENTRATION CONTOUR ( $\mu\text{g/L}$ )
- 26' GROUNDWATER ELEVATION CONTOUR, OCTOBER 31, 2014 (DASHED WHERE INFERRED)
- MW-4D**  
cis 1,2-DCE = 25  $\mu\text{g/L}$  MONITORING WELL LOCATION WITH ANALYTICAL RESULTS FOR cis 1,2-DCE (OCTOBER 2014)

- APPROXIMATE PROPERTY LINE
- CENTER LINE OF STREAM
- STORM SEWER
- TREE LINE

U — COMPOUND WAS NOT DETECTED AT OR ABOVE THE LABORATORY METHOD DETECTION LIMIT.

#### MAP REFERENCES:

1. BASE MAP: (INCLUDING EXISTING MONITORING WELL LOCATIONS & APPROXIMATE PROPERTY LINE), IS FROM DRAWING ENTITLED "MONITORING WELL SURVEY," BY CORNERSTONE SURVEYING & MAPPING, DECEMBER 17, 2012.
2. FORMER BROOK LOCATION FROM DRAWING ENTITLED "SURVEY OF PARCEL OF LAND," BY KING & DANSKIN, ENGINEERING & SURVEYING, JUNE 3, 1964.



( IN FEET )  
1 inch = 60 ft.

**STERLING**  
Sterling Environmental Engineering, P.C.

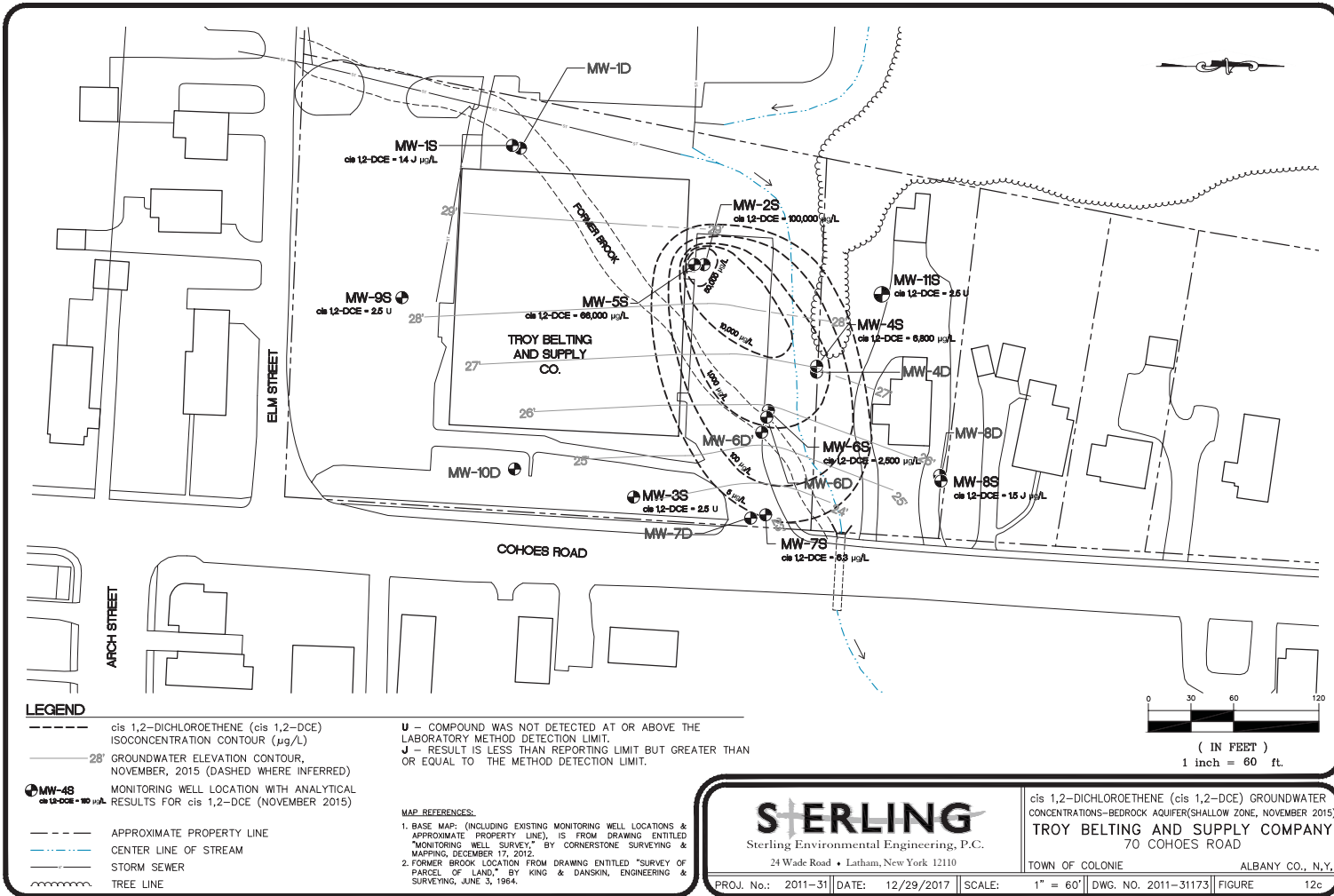
24 Wade Road • Latham, New York 12110

cis 1,2-DICHLOROETHENE (cis 1,2-DCE) GROUNDWATER CONCENTRATIONS—BEDROCK AQUIFER (DEEP ZONE, OCTOBER 2014)  
**TROY BELTING AND SUPPLY COMPANY**  
70 COHOES ROAD

TOWN OF COLONIE

ALBANY CO., N.Y.

PROJ. No.: 2011-31	DATE: 12/29/2017	SCALE: 1" = 60'	DWG. NO. 2011-31052	FIGURE 12b
--------------------	------------------	-----------------	---------------------	------------







**LEGEND:**

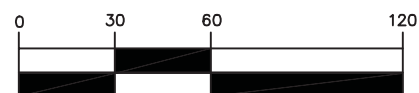


**MW-18**

MONITORING WELL



APPROXIMATE PROPERTY LINE



( IN FEET )

1 inch = 60 ft.

**MAP REFERENCES:**

1. BASE MAP: (INCLUDING EXISTING MONITORING WELL LOCATIONS & APPROXIMATE PROPERTY LINE), IS FROM DRAWING ENTITLED "MONITORING WELL SURVEY," BY CORNERSTONE SURVEYING & MAPPING, DECEMBER 17, 2012.
2. AERIAL IMAGE FROM NEW YORK STATEWIDE DIGITAL ORTHOIMAGERY PROGRAM, PHOTOGRAPHY CIRCA 2011

**STERLING**

Sterling Environmental Engineering, P.C.

24 Wade Road ♦ Latham, New York 12110

TOTAL VOLATILE ORGANIC COMPOUNDS (TOTAL VOCs)  
GROUNDWATER CONCENTRATIONS (MAY 4, 2012)

**TROY BELTING AND SUPPLY COMPANY**  
70 COHOES ROAD

TOWN OF COLONIE

ALBANY CO., N.Y.

PROJ. No.: 2011-31 | DATE: 12/29/2017 | SCALE: 1" = 60' | DWG. NO. 2011-31024 | FIGURE 13a



**LEGEND:**



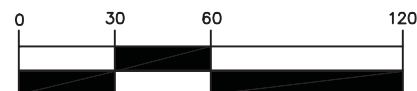
EXISTING MONITORING WELL



APPROXIMATE PROPERTY LINE

**MAP REFERENCES:**

1. BASE MAP: (INCLUDING EXISTING MONITORING WELL LOCATIONS & APPROXIMATE PROPERTY LINE), IS FROM DRAWING ENTITLED "MONITORING WELL SURVEY," BY CORNERSTONE SURVEYING & MAPPING, DECEMBER 17, 2012.
2. AERIAL IMAGE FROM NEW YORK STATEWIDE DIGITAL ORTHOIMAGERY PROGRAM, PHOTOGRAPHY CIRCA 2011



( IN FEET )

1 inch = 60 ft.

**STERLING**

Sterling Environmental Engineering, P.C.

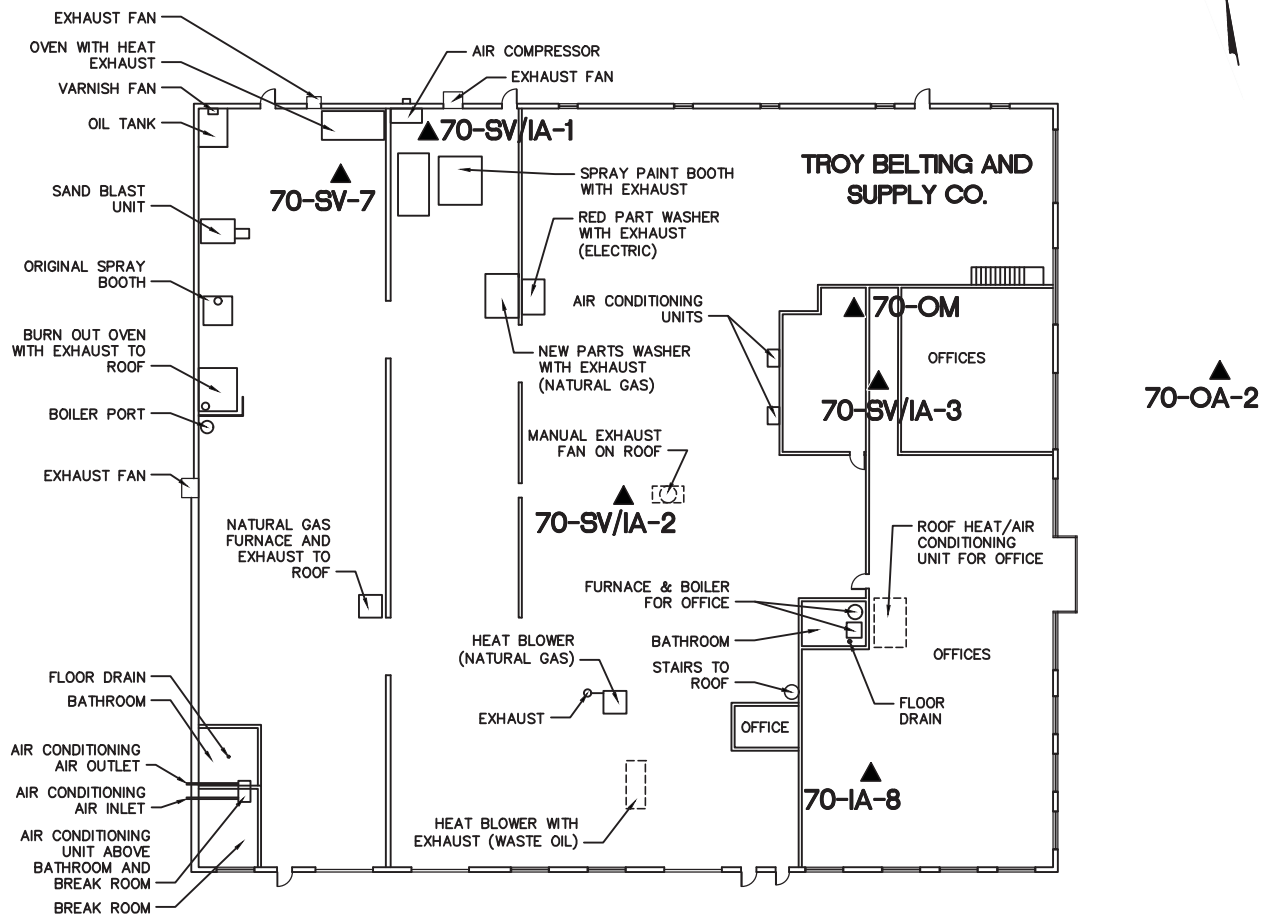
24 Wade Road ♦ Latham, New York 12110

TOTAL VOLATILE ORGANIC COMPOUNDS (TOTAL VOCs)  
GROUNDWATER CONCENTRATIONS (DECEMBER 20, 2012)  
**TROY BELTING AND SUPPLY COMPANY**  
70 COHOES ROAD

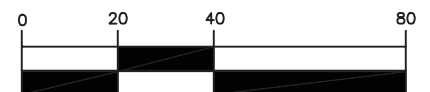
TOWN OF COLONIE

ALBANY CO., N.Y.





▲  
70-OA-1



( IN FEET )  
1 inch = 40 ft.

**LEGEND:**

▲ 70-SV/IA-1/OA-1/OM—SOIL VAPOR AND OUTDOOR/INDOOR AIR SAMPLING POINTS

**STERLING**

Sterling Environmental Engineering, P.C.

24 Wade Road ♦ Latham, New York 12110

ONSITE SOIL VAPOR  
INTRUSION SAMPLING POINTS  
**TROY BELTING AND SUPPLY COMPANY**  
70 COHOES ROAD

TOWN OF COLONIE

ALBANY CO., N.Y.

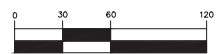


**LEGEND:**

OA	=	OUTDOOR AIR
IA	=	INDOOR AIR
SV	=	SUB-SLAB SOIL VAPOR
---	=	APPROXIMATE PROPERTY LINE

**MAP REFERENCES:**

1. BASE MAP (INCLUDING PROPERTY LINE BOUNDARY) IS FROM DRAWING ENTITLED "MONITORING WELL SURVEY," BY CORNERSTONE SURVEYING & MAPPING, DECEMBER 17, 2012.
2. AERIAL IMAGE FROM NEW YORK STATEWIDE DIGITAL ORTHOMAGERY PROGRAM, PHOTOGRAPHY CIRCA 2011.



( IN FEET )  
1 inch = 60 ft.

**STERLING**

Sterling Environmental Engineering, P.C.

24 Wade Road • Latham, New York 12110

OFFSITE SOIL VAPOR/INDOOR AIR/OUTDOOR AIR  
SAMPLING LOCATIONS (MARCH 10-13, 2014)  
**TROY BELTING AND SUPPLY COMPANY**  
70 COHOES ROAD

TOWN OF COLONIE

ALBANY CO., NY

PROJ. No.: 2011-31	DATE: 12/29/2017	SCALE: 1" = 60'	DWG. NO. 2011-31035	FIGURE 15
--------------------	------------------	-----------------	---------------------	-----------



**FIGURE 16**  
**[CONFIDENTIAL & PROVIDED UNDER SEPARATE COVER]**

**APPENDIX A**  
**PREVIOUS ENVIRONMENTAL REPORTS**  
**(PROVIDED ON CD)**