



**Sampling Plan for  
Basement Ponded Water and Sediment Sampling  
First Prize Center Site, Albany/Colonie, NY  
June 17, 2025 (Revised August 8, 2025)  
C.T. Male Project No.: 17.7536**

This plan is to seek approval from New York State Department of Environmental Conservation (NYSDEC) to collect and analyze surface water samples of the ponded water and, if present, sediment accumulated at the bottom of the ponded water within the former basement of the Main Building at the First Prize Center Site. Currently, there is an estimated 1 to 3 feet of standing water atop of a basement floor slab. The amount of sediment resulting from stormwater infiltration above the basement floor slab is undetermined at this time.

The attached Figure 1 shows the proposed water sampling locations. Water will be collected with a new bailer at each location, or directly with a laboratory grade container for laboratory analysis. The water will be collected from the northerly foundation wall by lowering a bailer without entering the water. The remaining locations will be collected by personnel wearing waders and walking to the sample location slowly and carefully or with a small boat, if determined to be warranted after assessing the site conditions. The buddy system will be employed for this work and sampling personnel must wear floatation vests.

The amount of sediment along the northern side of the basement where stormwater infiltrated will be assessed. If more than two (2) inches of competent sediment (i.e., not loose sluff) is present, sediment samples will be collected for laboratory analysis. The method of sediment sample collection will have to be determined at the time of the field work depending on how much sediment is present. If more than 2- inches but less than six (6) inches, a laboratory grade sampling container will be used to scoop the material by hand. If more than six (6) inches, a sampling device such as a split spoon or Geoprobe acetate liner.

The laboratory analyses will be for the following parameters:

- Target Compound List Volatile Organic Compounds;
- Target Compound List Semi-Volatile Organic Compounds; and
- Target Analyte List Metals

## C.T. MALE ASSOCIATES

*June 17, 2025 (Revised August 8, 2025)*

*Sampling Plan for Basement Ponded Water and Sediment Sampling*

*Page - 2*

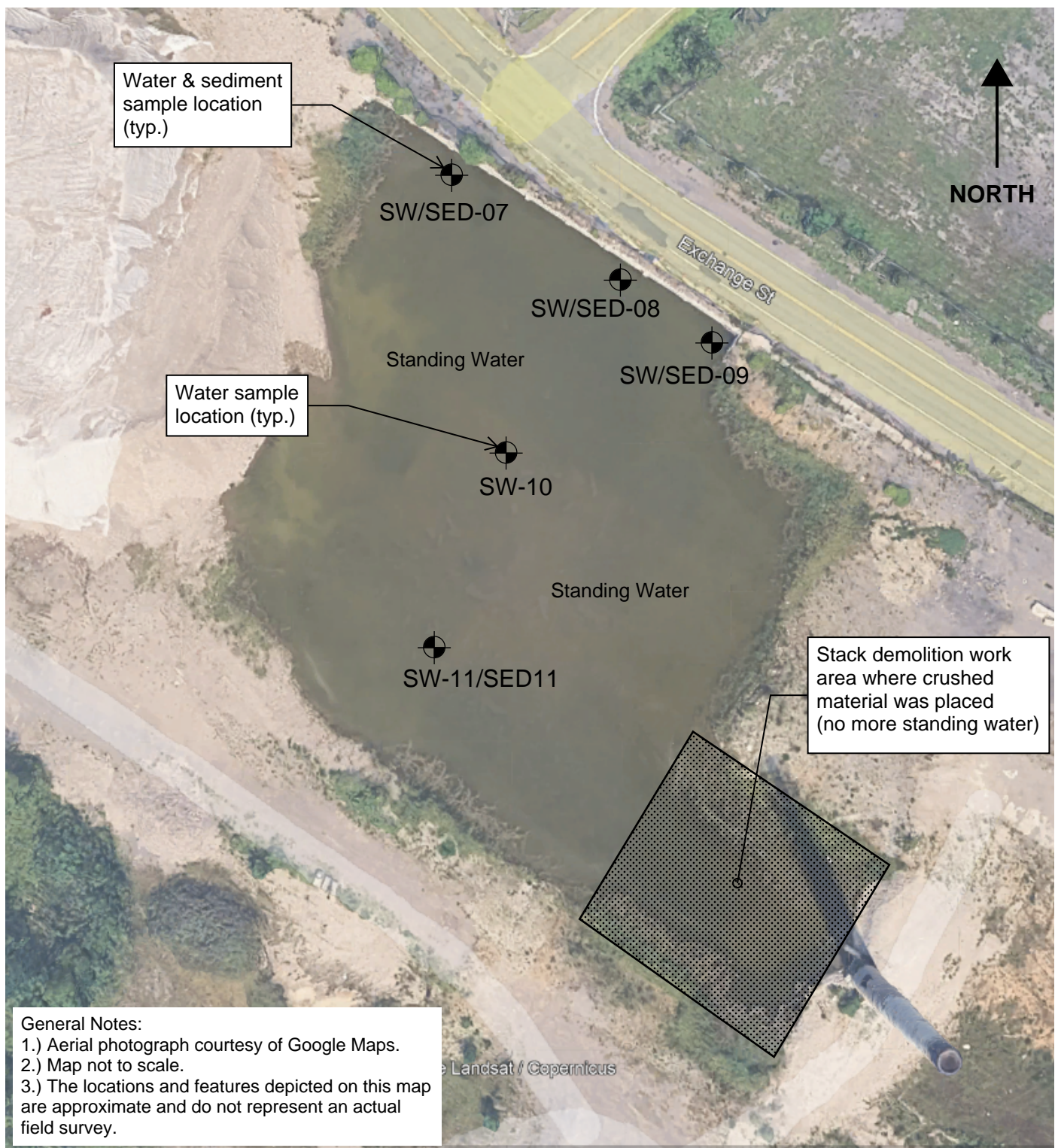
PFAS analysis (via USEPA Method 1633A) will also be performed on water samples collected from SW-08 and SW-11, and sediment samples from SED-08 and SED-11.

Samples will be analyzed by the project lab of record, Pace Analytical Labs. Quality assurance/quality control samples will not be collected beyond a trip blank for volatile organic analysis. The analytical results will be DUSR validated.

The waders and sediment sampling equipment will be decontaminated with a detergent wash and rinse. The wash and rinse fluids will be containerized in a 55-gallon steel drum or other small container (5-gallon plastic bucket(s) with lids) until the analytical results from the surface water and sediment samples are received. The analytical results will be used to evaluate whether it is reasonable to allow the collected water to be allowed to infiltrate site soils, poured back into the basement standing water or off-site disposal. NYSDEC will be consulted if any other method besides off-site disposal at a permitted facility is being considered.

A summary report of the findings will be prepared and submitted to NYSDEC for review.

For implementation of the work outline in this sampling plan, NYSDEC (Robert Doyle and Chris O'Neill) will be notified at least 7 business days via email.



**Figure 1 - Basement Sampling Plan**  
**First Prize Center Site, Albany/Colonie, NY**  
**C.T. Male Project No. 17.7536**  
**August 8, 2025**