

---

*Parcel A*  
*2023 Periodic Review Report*

**Former ALCO Site**

City of Schenectady, Schenectady County, New York

Prepared For  
**Maxon ALCO Holdings, LLC**

540 Broadway  
Albany, New York 12207

May 2023

Former ALCO Site  
City of Schenectady, Schenectady County, New York

Parcel A  
2023 Periodic Review Report

NYSDEC Site Number: C447042

May 2023

Prepared For:

Maxon ALCO Holdings, LLC  
540 Broadway  
Albany, New York 12207

Prepared By:

Barton & Loguidice, D.P.C.  
10 Airline Drive, Suite 200  
Albany, New York 12205



## Table of Contents

<u>Section</u>	<u>Page</u>
1.0 EXECUTIVE SUMMARY .....	3
2.0 SITE OVERVIEW .....	7
3.0 REMEDY PERFORMANCE, EFFECTIVENESS, AND PROTECTIVENESS .....	10
4.0 IC/EC PLAN COMPLIANCE .....	11
4.1 Engineering and Institutional Control - Table 2 .....	11
4.2 Engineering and Institutional Control Certification .....	12
5.0 MONITORING PLAN COMPLIANCE REPORT .....	13
5.1 Groundwater and Harbor Monitoring Results .....	13
5.2 Cover System Summary .....	14
5.3 SVI Results .....	15
5.4 Riverbank Sheen – 1604483 .....	15
6.0 OPERATION & MAINTENANCE .....	17
7.0 CONCLUSIONS .....	18

### Tables

Table 1	Post-Remediation Sampling Requirements and Schedule .....	7
Table 2	IC/EC Descriptions .....	9
Table 3	Monitoring/Inspections Schedule .....	11

### Figures

Figure 1	Site Location Map
Figure 2	Site Plan
Figure 3	Riverbank Site Plan

Appendices

Appendix A	NYSDEC Approved Certification Form
Appendix B	Site Annual Inspection Form
Appendix C	Cover System Photos
Appendix D	Cover Map
Appendix E	SVI Assessment Results
Appendix F	Spill 1604483 2022-2023 Weekly Inspection Reports

## 1.0 EXECUTIVE SUMMARY

Maxon ALCO Holdings, LLC (MAH) entered into Brownfield Cleanup Agreements (BCA), as a Volunteer, through the New York State Department of Environmental Conservation's (NYSDEC) Brownfield Cleanup Program (BCP) for the property located at 301 Nott Street in Schenectady, New York, identified as the ALCO Site (Property or Site) and historically known as the Nott Street Industrial Park (Park). In 2010, after purchasing the property, the Volunteer (Maxon-ALCO Holdings) divided the Property into three parcels: Parcel A, Parcel B, and Parcel C (Site Nos. C447042, C447043, and C447044, see Figure 1) and each Parcel was deemed eligible for the BCP and subject to separate BCAs.

The site location is included as Figure 1.

Subsequently, a remedial investigation (RI) was performed to:

- Characterize site conditions;
- Determine the nature of the contamination; and
- Assess risk to human health and the environment.

The RI data identified contaminants of concern associated with historical operations at the property conducted by others. A "contaminant of concern" is a contaminant that is sufficiently present in frequency and concentration in the environment to require evaluation for remedial action. Not all contaminants identified on the property are contaminants of concern. The nature and extent of contamination and environmental media requiring action are summarized below. Additionally, the RI Report contains a full discussion of the data. The contaminant(s) of concern identified at this site are:

- trans-1,2-Dichloroethene
- trichloroethene (TCE)
- cis-1,2-Dichloroethene
- tetrachloroethene (PCE)
- Vinyl Chloride
- Polycyclic Aromatic Hydrocarbons (PAHs),

The contaminant(s) of concern exceed the applicable Standard, Criteria, and Guidance (SCGs) for:

- Groundwater
- Soil
- Soil vapor intrusion

Soil samples were analyzed for volatile organic compounds (VOCs), semi-volatile organic compounds (SVOCs), inorganics, and pesticides/polychlorinated biphenyls (PCBs). Several Polycyclic Aromatic Hydrocarbons (PAHs), (which are present in coal and coal ash), have been measured in surface soils at some locations above the unrestricted use soil cleanup objectives (SCOs). The chlorinated solvent tetrachloroethene (PCE) was also detected in sub-surface soil above unrestricted use SCOs. There were

no pesticides/PCBs detected above unrestricted use SCOs. Arsenic was found above the unrestricted use SCOs in one sample. Site-related soil contamination is not expected to extend off-site based on the available data.

Groundwater samples were analyzed for VOCs, SVOCs, inorganics, and pesticides/PCBs. Groundwater at ALCO-Maxon Site Parcel C is impacted by chlorinated solvents (PCE, TCE, cis-1,2-dichloroethene, trans-1,2-dichloroethene and vinyl chloride). The chlorinated solvent impact originates from an area on ALCO-Maxon Site Parcel C. Chlorinated solvents have been measured in groundwater samples above groundwater standards. Exceedance of groundwater standards were also observed for a limited number of PAHs in one monitoring well. The property is serviced by Municipal water and sewer.

### **Parcel A RI Findings**

- Non-aqueous phase liquid (NAPL) was detected in two of the three monitoring wells installed around MW-45; NAPL thicknesses varied from roughly one inch in MW-47 to roughly one foot in MW-48.
- Concentrations of chlorinated VOCs in Parcel A monitoring wells sampled ranged from 136 micrograms per liter (µg/L) to 3082 µg/L.

### **Site-Wide Groundwater Quality**

- Monitoring wells installed on Parcels A, B, and C provided further delineation of the chlorinated solvent detection, which is detectable across the three parcels along the established groundwater flow gradient.
- The source area for the chlorinated solvent detection was identified and delineated in an area of Parcel C around soil vapor point SV-C9 and groundwater monitoring wells MW-19, and MW-46.

### **Remedial Action Objectives**

After completion of the remedial work, historic residual contamination was left at this site, which is hereafter referred to as “remaining contamination”. Institutional and Engineering Controls (ICs and ECs) have been incorporated into the site remedy to control exposure to remaining contamination to ensure protection of public health and the environment. An Environmental Easement granted to the NYSDEC, and recorded with the Schenectady County Clerk, requires compliance with the ECs and ICs placed on the site. Each Parcel was issued a separate Decision Document by NYSDEC. The Remedial Action Objectives (RAOs) for Parcel A are as follows:

Parcel A (Decision Document, August 2014)**Groundwater***RAOs for Public Health Protection*

- Prevent ingestion of groundwater with contaminant levels exceeding drinking water standards.
- Prevent contact with, or inhalation of, volatiles from contaminated groundwater.

*RAOs for Environmental Protection*

- Restore ground water aquifer to pre-disposal/pre-release conditions, to the extent practicable.
- Remove the source of ground or surface water contamination.

**Soil***RAOs for Public Health Protection*

- Prevent ingestion/direct contact with contaminated soil.
- Prevent inhalation of or exposure from contaminants volatilizing from contaminants in soil.

*RAOs for Environmental Protection*

- Prevent migration of contaminants that would result in groundwater or surface water contamination.
- Prevent impacts to biota from ingestion/direct contact with soil causing toxicity or impacts from bioaccumulation through the terrestrial food chain.

**Soil Vapor***RAOs for Public Health Protection*

- Mitigate impacts to public health resulting from existing, or the potential for, soil vapor intrusion into buildings at a site.

The final remedial measures for the site must address RAOs, which are site-specific statements that convey the goals for minimizing or eliminating substantial risks to public health and the environment.

The remedies, approved by NYSDEC, were implemented in accordance with the November 2016 Final Engineering Report and have been operated continuously in accordance with the July 2016 Site Management Plan.

A summary of the 2022-2023 tasks outlined above is provided herein.

- Quarterly groundwater monitoring
- Weekly inspection and reporting of historic residual from past releases, identified as: Spill 1604483

Both Parcels A and B received Certificate of Completion (COC) status in December 2016. Since the COC, the site is subject to the SMP (see Section 2). Monitoring activities outlined in the SMP have been fulfilled during this reporting period. The annual air pressure differential monitoring within the Rivers Casino and Landings Hotel took place on December 14, 2022 and confirm the effectiveness of the engineering controls.



## 2.0 SITE OVERVIEW

The site is located at 301 Nott Street, Schenectady, New York. The site consists of three adjacent parcels (see Figure 2):

- Parcel A is approximately 20.31 acres and was part of the former American Locomotive Company property located at 301 Nott Street, Schenectady, NY 12306. Parcel A has the Mohawk River as its northern border and is adjacent to Parcel B (C447043).
- Parcel B is approximately 31.43 acres and was part of the former American Locomotive Company property located at 301 Nott Street in Schenectady. This Parcel lies between Parcel A (C447042), that is adjacent to the Mohawk River, and Parcel C (C447044), which is adjacent to Front Street and Erie Boulevard.
- Parcel C is approximately 5.45 acres and was part of the former American Locomotive Company property located at 301 Nott Street in Schenectady. Parcel C is made up of two parcels. The larger area is adjacent to Parcel B (C447043) and the second area is across Erie Boulevard and includes the former Erie Boulevard Power substation. A portion of Parcel C has industrial activities conducted by STS.

See Figure 2, Site Plan, for a breakdown of the parcel locations.

**The site was remediated in accordance with the NYSDEC's August 2014 Decision Document, including:**

1. Implementation of a remedial design program to provide details necessary for the construction, operation, optimization, maintenance, and monitoring of the remedial program. Included was the implementation of green remediation principles and techniques where feasible in the design, implementation, and site management of the remedy as per DER-31.
2. Two areas of on-site soil with significant levels of arsenic, lead and mercury (Soil Hot Spots) contamination was removed and disposed of to a depth of two feet. Clean fill meeting the requirements of 6NYCRR Part 375-6.7(d) was to be utilized to backfill the excavation and establish the designated grades at the site.
3. A site soil cover was required to allow for restricted residential use of the site. The soil cover selected consisted of either structures such as buildings, pavement, sidewalks comprising the site development or a soil cover in areas where the upper two feet of exposed surface soil will exceed the applicable soil cleanup objectives (SCOs). Where the soil cover is required it is a minimum of two feet of soil, meeting the SCO's for cover material as set forth in 6 NYCRR Part 375-6.7(d) for restricted residential use. The soil cover will be placed over a demarcation layer, with the upper six inches of the soil of sufficient quality to maintain a vegetation layer. Any fill material brought to the site will meet the requirements for the identified site use as set forth in 6 NYCRR Part 375-6.7(d).

4. Imposition of an institutional control in the form of an environmental easement for controlled property that:
  - Requires the remedial party or site to complete and submit to the Department a periodic certification of institutional and engineering controls in accordance with Part 375-1.8(h)(3);
  - Allows the use and development of the controlled property for restricted residential, commercial and industrial uses as defined by Part 375-1.8(g), although land use is subject to local zoning laws;
  - Restricts the use of groundwater as a source of potable or process water, without necessary water quality treatment as determined by the New York State Department of Health (NYSDOH) or County DOH; and
  - Requires compliance with the Department approved Site Management Plan.
5. Development and implementation of a Site Management Plan for long term management of remaining contamination as required by the Environmental Easement, which includes plans for: (1) Institutional and Engineering Controls (2) monitoring, (3) operation and maintenance, and (4) reporting. The SMP for Parcel A outlined the following items for reporting in the PRR:
  - Identification, assessment and certification of ECs/ICs required by the remedy for the site.
  - Results of the required annual site inspections and severe condition inspections, if applicable.
  - Applicable site management forms and other records generated for the site during the reporting period in the NYSDEC-approved electronic format, if not previously submitted.
  - A summary of any discharge monitoring data and/or information generated during the reporting period, with comments and conclusions.
  - Data summary tables and graphical representations of contaminants of concern by media (groundwater, soil vapor, etc.), which include a listing of the compounds analyzed, along with the applicable standards, with exceedances highlighted. These will include a presentation of past data as part of an evaluation of contaminant concentration trends. These results are provided to the Department in quarterly monitoring reports under separate cover.
  - Results of analyses, copies of laboratory data sheets, and the required laboratory data deliverables for samples collected during the reporting period are submitted in digital format as determined by the NYSDEC on a quarterly basis under separate cover. Currently, data is supplied electronically and submitted to the NYSDEC EQUIS™ database.

- A site evaluation, which includes the following:
  - The compliance of the remedy with the requirements of the site-specific Remedial Action Work Plan (RAWP), Record of Decision (ROD), or Decision Document;
  - The operation and the effectiveness of treatment units, etc., including identification of any needed repairs or modifications;
  - Any new conclusions or observations regarding site contamination based on inspections or data generated by the Monitoring and Sampling Plan for the media being monitored;
  - Recommendations regarding any necessary changes to the remedy and/or Monitoring and Sampling Plan; and
  - Trends in contaminant levels in the affected media will be evaluated to determine if the remedy continues to be effective in achieving remedial goals as specified by the Decision Document.
  - The overall performance and effectiveness of the remedy.

<b>Table 1. Post-Remediation Sampling Requirements and Schedule</b>		
<b>Sampling Location</b>	<b>Analysis</b>	<b>*Schedule</b>
Soil Cover System	Visual Inspection	Annually
Groundwater Monitoring Wells	VOCs, Total Hardness, Nitrate-Nitrogen, Chloride, Sulfate, Total Metals, and **DRO	Quarterly
Harbor Sediment/Surface Water	DRO, VOCs (plus 10 TICs), and SVOCs (plus TICs)	Annually
Soil Vapor Intrusion Mitigation Monitoring	Pressure Differential Measurements	Annually
*The frequency of events will be conducted as specified until otherwise approved by NYSDEC and NYSDOH. Discontinuance of such activity will be by permission of the NYSDEC and NYSDOH. ** Monitoring locations MW-72 and MW-73 only		

Since the COC, the site has followed the SMP. Monitoring activities outlined in the SMP have been fulfilled during this reporting period.

### 3.0 REMEDY PERFORMANCE, EFFECTIVENESS, AND PROTECTIVENESS

The implementation of the selected remedies has been successful, and the remedial system continues to operate effectively.

- The soil cover system prevents direct contact with remaining on-site contaminants.
- The property has an environmental easement restricting land and groundwater use at the site. The easement was filed on October 14, 2016 with the Schenectady County Clerk.
- Periodic monitoring confirms that the in situ oxidant injections completed on Parcel C to treat the chlorinated solvent plume have reduced the concentrations of indicator and volatile organic constituents in the groundwater on Parcel A.
- As per the SMP, the Rivers Casino and Landings Hotel structures are assessed for soil vapor intrusion (SVI). The building's HVAC system should maintain positive pressure, preventing potential for vapors, if any, from migrating up through the subslab. The heating season represents the worst case condition where subslab vapors have a potential to be drawn into the building. During the 2022/2023 monitoring event, the Rivers Casino portion was verified to be under positive pressure. Documentation from the Rivers Casino and Landings Hotel mechanical technician, BPI, provided confirmation that the HVAC system is operating efficiently and effectively (Appendix E).

The groundwater monitoring results presented to the Department in the quarterly Groundwater Quality Monitoring Reports demonstrates substantial progress towards the remedial objective of restoration of groundwater quality through natural attenuation. With ongoing maintenance of the integrity of the soil cover system, continued improvement in water quality is expected to occur over time.

## 4.0 IC/EC PLAN COMPLIANCE

### 4.1 Engineering and Institutional Control - Table 2

Table 2 summarizes each Institutional and Engineering Control.

Table 2. IC/EC Descriptions			
Engineering Control	Description	Objective	Status
Institutional Controls:	<ul style="list-style-type: none"> <li>The property may be used for: restricted residential use;</li> <li>ECs must be operated and maintained as specified in this SMP;</li> <li>ECs must be inspected at a frequency and in a manner defined in the SMP.</li> <li>The use of groundwater underlying the property is prohibited without necessary water quality treatment as determined by the NYSDOH or the Schenectady County Department of Health to render it safe for use as drinking water or for industrial purposes, and the user must first notify and obtain written approval to do so from the Department.</li> <li>Groundwater and other environmental or public health monitoring must be performed.</li> <li>Data and information pertinent to site management must be reported at the frequency and in a manner as defined in the SMP.</li> <li>Future activities that will disturb remaining contaminated material must be conducted in accordance with the SMP;</li> <li>Monitoring to assess the performance and effectiveness of the remedy must be performed as defined in the SMP;</li> <li>Operation, maintenance, monitoring, inspection, and reporting of any mechanical or physical component of the remedy shall be performed as defined in the SMP;</li> <li>Access to the site must be provided to agents, employees or other representatives of the State of New York with reasonable prior notice to the property owner to assure compliance with the restrictions identified by the Environmental Easement.</li> <li>The potential for vapor intrusion must be evaluated for any buildings developed in the area within the IC boundaries noted on Figure 2, and any impacts that are identified must be monitored or mitigated;</li> <li>Vegetable gardens and farming on the site are prohibited;</li> <li>Appropriate clean soil cover of a minimum thickness of two feet, due to the restricted-residential use, must be maintained on the site;</li> <li>Excavation below the clean soil layer entail requires: 1) 15 day prior notification to NYSDEC and NYSDOH, 2) notification to contractors of the potential hazard (contractor personnel may be subject to 29 CFR 1910.120 – HAZWOPER), and 3) restoration of the clean soil layer</li> </ul>	<ul style="list-style-type: none"> <li>Implement, maintain and monitor Engineering Control systems;</li> <li>Prevent future exposure to remaining contamination; and,</li> <li>Limit the use and development of the site to restricted residential uses only.</li> </ul>	Operational
Engineering Controls:	Cover system	Meet the SCOs for cover material as set forth in 6 NYCRR Part 375-6.7(d) for restricted residential use.	Operational

## **4.2 Engineering and Institutional Control Certification**

Scott D. Nostrand, P.E., of Barton & Loguidice, D.P.C. (B&L), certifies, on the basis of on-site observation and documentation as presented herein, that the Engineering and Institutional Control activities completed during this reporting period at the former ALCO site located at 301 Nott Street were completed in substantial compliance with the approved Parcel A Site Management Plan dated November 2016. The NYSDEC approved certification forms are included in Appendix A.

## 5.0 MONITORING PLAN COMPLIANCE REPORT

Monitoring of the performance of the remedy has been conducted in accordance with the Site Management Plan and the following Table 3.

Table 3. Monitoring/Inspections Schedule			
Program	Frequency	Matrix	Analysis
Groundwater Monitoring Wells: MW-62, MW-65, MW-64D, MW-64S	Quarterly	Groundwater	VOCs, Total Hardness, Nitrate-Nitrogen, Chloride, Sulfate, and Total Metals
MW-72 and MW-73	Quarterly	Groundwater	DRO
Harbor Sediment Sampling	Annual	Sediment	VOCs, SVOCs, and DRO
Harbor Surface Water Sampling	Annual	Surface Water	VOCs, SVOCs, and DRO
Soil Cover System	Annual	--	Visual Inspection
Soil Vapor Intrusion Mitigation Monitoring	Annual	Sub-slab/Building pressure	Pressure Differential Measurements
Periodic Review Report	Annual	--	--

### 5.1 Groundwater and Harbor Monitoring Results

In accordance with the Parcel A SMP, groundwater monitoring wells MW-62, MW-65, MW-64D, and MW-64S were sampled during the First, Second, Third, and Fourth Quarters of 2022. The analytical results were presented in the respective 2022 Groundwater Quality Monitoring Report(s), and submitted to the NYSDEC under separate cover. In addition, analytical data was supplied electronically and submitted to the NYSDEC EQuIS™ database.

#### *Riverbank Wells – Diesel Range Organics (MW-72 and MW-73)*

In accordance with the Parcel A SMP, riverbank monitoring wells MW-72 and MW-73 were sampled for Diesel Range Organics (DRO) during the First, Second, Third, and Fourth Quarters of 2022. Monitoring well MW-72 was inundated with riverbank sediment and unable to be sampled during the 2022 First and Second Quarter. In September 2022, accumulated sediment in MW-72 was flushed by Cascade Environmental, allowing groundwater samples to be collected during the Third and Fourth Quarter monitoring events. The analytical results were presented in the respective 2022 Groundwater Quality Monitoring Report(s), and submitted to the NYSDEC

under separate cover. In addition, analytical data was supplied electronically and submitted to the NYSDEC EQuIS™ database.

#### *Annual Harbor Sampling*

In accordance with Parcel A SMP, the annual Harbor sampling was conducted during the 2022 Third Quarter monitoring event on September 27, 2022. One surface water and one sediment sample was collected from the Harbor and analyzed for VOCs and DROs. The Parcel A sample is collected at the end of the center dock system within the Harbor. The surface water sample was containerized first, followed by the collection of harbor sediment to avoid sampling turbid conditions. The results from the annual Harbor sampling event were provided in the 2022 Third Quarter Groundwater Quality Monitoring Report submitted to the NYSDEC under separate cover. In addition, analytical data was supplied electronically and submitted to the NYSDEC EQuIS™ database.

A schedule of the 2022 EQuIS and Groundwater Quality Monitoring Report submittals is presented below.

- Submission of the EQuIS Q1 2022 groundwater quality data to NYSDEC database (March 28, 2022). NYSDEC EIMS Team data submission approval (April 12, 2022).
- Submission of the First Quarter Groundwater Monitoring Report (May 10, 2022).
- Submission of the Second Quarter Groundwater Monitoring Report (July 18, 2022).
- Submission of the EQuIS Q2 2022 groundwater quality data to NYSDEC database (August 5, 2022). NYSDEC EIMS Team data submission approval (September 15, 2022).
- Submission of the Third Quarter Groundwater Monitoring Report (November 2, 2022).
- Submission of the EQuIS Q3 2022 groundwater quality data to NYSDEC database (November 4, 2022). NYSDEC EIMS Team data submission approval (December 21, 2022).
- Submission of the Fourth Quarter Groundwater Monitoring Report (December 5, 2022).
- Submission of the EQuIS Q4 2022 groundwater quality data to NYSDEC database (December 12, 2022). NYSDEC EIMS Team data submission approval (December 28, 2022).

## **5.2 Cover System Summary**

Annual site inspection was completed on March 30<sup>th</sup>, 2022 and included inspection of the cover system. This checklist, provided by the SMP, is included as Appendix B. Representative photographs of site cover are located in Appendix C. During the annual inspection, soils were found to be stabilized and in good condition. Cracking (including areas capped by concrete or hard surfacing) or areas of concern were not identified and the cover remains sound.

Geotechnical soil borings were completed during the week of April 4, 2022 to assist in the design of a proposed large-vessel boat dock along the shoreline of the Mohawk River. Disturbance of the soil cover was completed in accordance with the NYSDEC approved Mohawk Harbor



Dockage Geotechnical Testing Work Plan, prepared by MJ Engineering and Land Surveying, P.C. Site work was supervised by a B&L qualified environmental professional in accordance with the Parcel A Site Management Plan and Excavation Work Plan.

In accordance with the Work Plan, MJ Engineering and Land Surveying, P.C., will submit the summary findings report to the Department for review and approval.

### **5.3 SVI Results**

As per the SMP, SVI assessments are required for new buildings located on the property. Parcel A includes the Casino/Landings Hotel building. This building is currently operated under positive pressure. As such, ports are located throughout the Casino and hotel portions of the building to demonstrate that the indoor pressure differential is net positive in comparison to subslab conditions.

The annual SVI was performed on December 14, 2022 by B&L staff, utilizing a Dwyer 477AV-1 Digital Manometer in both the Casino portion and Landings Hotel portion of the building. The outside temperature during the morning of the inspection was reported at 30°F, with a daily average temperature of 26°F recorded ([www.wunderground.com](http://www.wunderground.com)). The heating system in the Casino would be in operation based on the documented temperatures.

During this monitoring event, the confirmatory measurements established that maintaining the building HVAC under positive pressure was resulting in a net positive pressure differential between the building interior and the subslab within both the Casino and Hotel. See Appendix E for sampling port locations and a historical data comparison chart, as well as a letter from the HVAC contractor certifying the system is fully operational during the 2022-2023 period. The next annual air pressure differential monitoring will take place between November 15, 2023 to March 31, 2024 during the heating season as recommended by the NYSDOH soil vapor intrusion guidance documentation (2006). The heating season represents the worst case condition where subslab vapors have the potential to be drawn into the building.

### **5.4 Riverbank Sheen – 1604483**

During the 2022-2023 season, a sheen has been visibly reduced as compared to 2017 and 2018. Summarized below are several mitigation techniques implemented along the riverbank that monitor and contain Spill 1604483.

An existing sub-grade 120-foot grout wall conveys historic residual LNAPL northeast along the wall. In August 2017, injection grouting work was completed along the lower bank (217 ft. amsl) by Debrino Caulking Associates, Inc. of Castleton-on-Hudson, NY. Two parallel rows of borings were installed approximately 16 to 20 feet below grade 18-inches to 24-inches apart in an alternating pattern, forming a sub-grade wall approximately 120 feet in length. The grout wall was installed to convey historic residual LNAPL northeast along the wall.

A series of eight (8) injection wells were installed by NYEG Drilling, LLC of Brewerton, New York, on the downgradient side of the grout wall after installation of the wall was completed. The injection wells were installed to a depth of 15-feet bgs using a track mounted Geoprobe rig. The wells were constructed with 2-inch PVC. To date, a total of 17,375 pounds of PersulfOx has been injected along the riverbank area. Following each ISCO program, summary reports were provided to the Department and included as Appendices to this document. During the 2022-2023 season, ISCO injection work was not conducted.

Two operational monitoring wells (MW-72 and MW-73) are located upgradient of the grout wall. These wells are included in the Parcel A monitoring well network. In accordance with the Parcel A Site Management Plan (SMP) groundwater samples are collected from each location and analyzed for DRO. The results are presented in a Groundwater Quality Monitoring Report which is provided to the Department on a quarterly basis. One 6-inch recovery well, designated as MW-72REC is located on the lower bench level near monitoring well MW-72.

The eight (8) existing injection wells and monitoring wells were surveyed on April 29<sup>th</sup>, 2022 by Hershberg and Hershberg's New York State-licensed surveyor. Locations were reported in feet as horizontal coordinates referenced to the New York State plane coordinate system (NAD 1983), accurate to the nearest one-tenth (0.1) feet. Elevations were reported in feet referenced to the USGS mean sea level datum; ground levels at wellheads were measured to at least one-tenth (0.1) feet, and the top rim of the PVC riser and the lid of the protective cover on each monitoring well were measured to one-hundredth (0.01) feet. A summary of monitoring points, including well designations and associated PVC elevations, are shown on Figure 3. A 100-foot containment boom and 80-foot absorbent boom are installed to contain sheen seeping from the riverbank. The absorbent boom is replaced as needed by PIM. Initial aerator installation consisted of disc diffuser membranes attached to small air compressors powered with solar panels. However, even with the maintenance of the system, the units did not consistently aerate the desired area. The units were damaged during a flood event in November 2019 and the decision was made to replace this system. The new aerator system was installed in spring of 2020 and consisted of two Fuji Electric 0.3 hp regenerative blower units are housed on permanent platforms installed in the upper riprap, powered by an electrical outlet installed on the upper bench level. Each blower unit connects to three diffuser membranes within the containment boom (6 total diffusers). This system was not operational in April of 2022 due to record flooding, however the blower units were replaced in-kind. This system is removed in late fall every year in preparation of the river freezing, and re-installed in the spring when the river thaws. In accordance with the SMP, a Remedial System Optimization (RSO) study was prepared and submitted to the NYSDEC on January 17, 2023 for review and approval.

## **6.0 OPERATION & MAINTENANCE**

The site remedy does not rely on any mechanical systems, such as groundwater treatment systems, sub-slab depressurization systems or air sparge/soil vapor extraction systems to protect public health and the environment. Therefore, the operation and maintenance of such components is not included in this PRR.

## 7.0 CONCLUSIONS

Maxon ALCO Holdings, LLC, has been operating the remedial systems at the ALCO Parcel A property in accordance with the approved Site Management Plan. During the 2022-2023 PRR reporting period, the following conclusions and recommendations have been made:

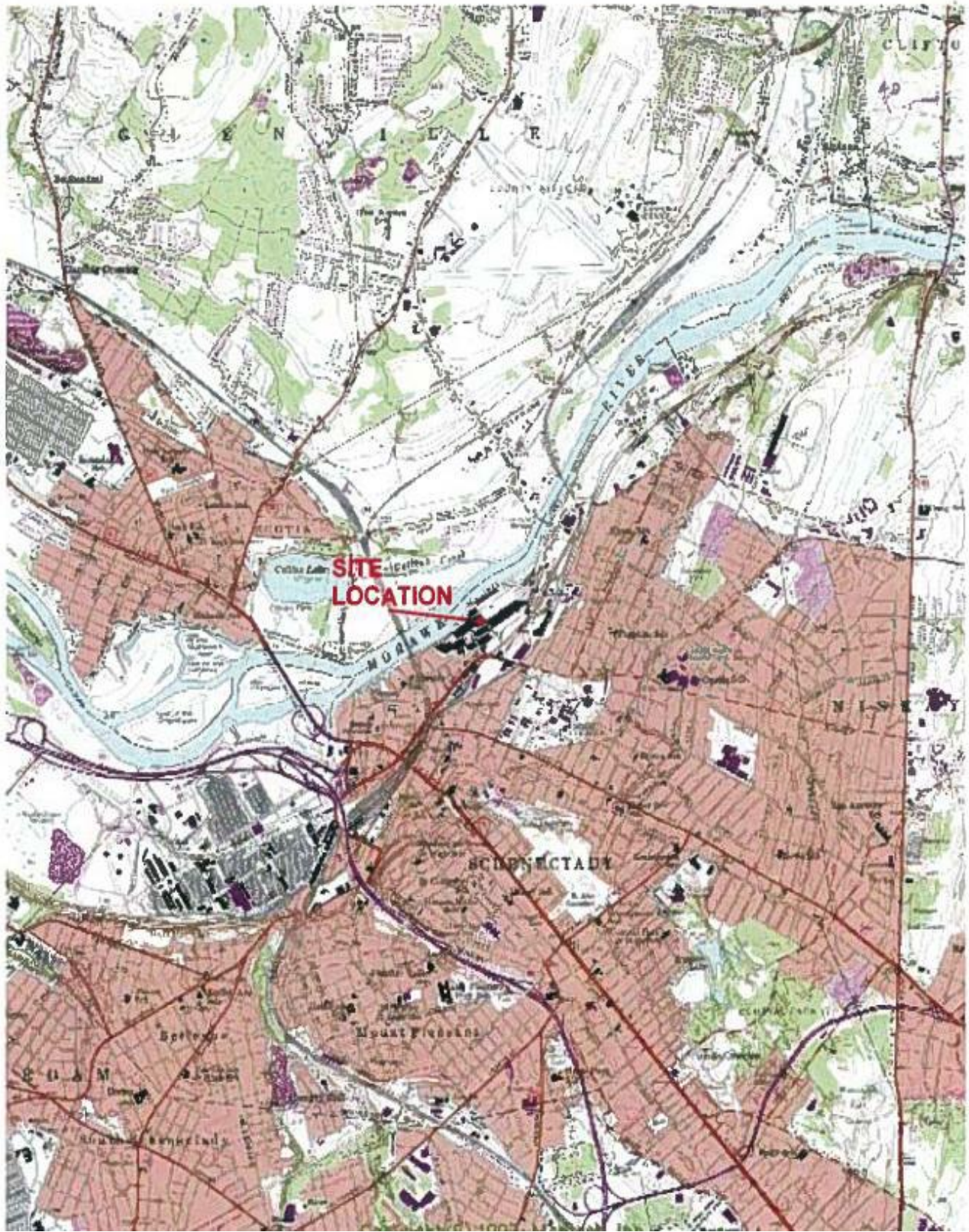
- Quarterly groundwater monitoring has overall continued to show declines in levels of chlorinated solvents. Overall, since 2016, VOC parameters concentrations are trending downward or non-detect. It is recommended that monitoring continue to mark the trend and determine whether natural attenuation is satisfactory or whether further remedial action is needed. To date, the monitoring reflects that the remedial program remains effective.
- The soil cover system has been successfully maintained throughout the site as maintenance and/or construction excavation activities are completed.
- New buildings on site that have first floor occupancy have been historically tested for soil vapor intrusion. Structures on Parcel A include the Rivers Casino and Landings Hotel, which have demonstrated to be under a positive pressure system in the past. The next annual air pressure differential monitoring will take place during the 2023-24 heating season documented by the NYSDOH as the period between November 15 to March 31.
- Spill 1604483 has been regularly inspected throughout the reporting period, once a week or more as necessary. Product levels were monitored within MW-73 during the 2022-2023 monitoring period and reported to the Department on a weekly basis. Site checks and activity descriptions are included in Appendix F.

**Figure 1**

**Site Location Map**



↑  
N



**Barton  
&Loguidice**

MAXON ALCO HOLDINGS, LLC  
PARCEL A PERIODIC REVIEW REPORT

SITE LOCATION

Figure Number

1

Project Number

1368.001.007

Date

MAY 2023

Scale

NOT TO SCALE

SCHENECTADY COUNTY

NEW YORK

**Figure 2**

**Site Plan**







**Figure 3**

**Riverbank Site Plan**

Plotted: Apr 26, 2023 - 5:25PM  
Z:\BL-Vault\ID2\18217AD2-1C71-4823-8927-99D5C4054147\0\2879000-2879866\2879866\FIG 1\_RIVERBANK FEATURES (ID 2879866).dwg

SYR By: bas



10 Airline Drive  
Suite 200  
Albany, NY  
12205

Date  
APRIL 2023

Scale  
AS SHOWN

Figure Number  
3

Project Number  
1368.001.007

**B & L**  
**Barton & Loguidice, D.P.C.**

MAXON ALCO HOLDINGS, LLC  
PARCEL A PERIODIC REVIEW REPORT

# RIVERBANK MONITORING AND MITIGATION FEATURES

SCHENECTADY

SCHENECTADY COUNTY, NEW YORK

## **Appendix A**

### **NYSDEC Approved Certification Form**



Enclosure 2  
**NEW YORK STATE DEPARTMENT OF ENVIRONMENTAL CONSERVATION**  
**Site Management Periodic Review Report Notice**  
**Institutional and Engineering Controls Certification Form**



	Site Details	Box 1	
<b>Site No.</b>	<b>C447042</b>		
<b>Site Name</b> ALCO-Maxon Site - Parcel A			
Site Address: 301 NOTT STREET      Zip Code: 12305			
City/Town: Schenectady			
County: Schenectady			
Site Acreage: 19.150			
Reporting Period: April 09, 2022 to April 09, 2023			
		YES	NO
1.	Is the information above correct?	<input checked="" type="checkbox"/>	<input type="checkbox"/>
If NO, include handwritten above or on a separate sheet.			
2.	Has some or all of the site property been sold, subdivided, merged, or undergone a tax map amendment during this Reporting Period?	<input type="checkbox"/>	<input checked="" type="checkbox"/>
3.	Has there been any change of use at the site during this Reporting Period (see 6NYCRR 375-1.11(d))?	<input type="checkbox"/>	<input checked="" type="checkbox"/>
4.	Have any federal, state, and/or local permits (e.g., building, discharge) been issued for or at the property during this Reporting Period?	<input type="checkbox"/>	<input checked="" type="checkbox"/>
<b>If you answered YES to questions 2 thru 4, include documentation or evidence that documentation has been previously submitted with this certification form.</b>			
5.	Is the site currently undergoing development?	<input type="checkbox"/>	<input checked="" type="checkbox"/>

		Box 2	
		YES	NO
6.	Is the current site use consistent with the use(s) listed below? Restricted-Residential, Commercial, and Industrial	<input checked="" type="checkbox"/>	<input type="checkbox"/>
7.	Are all ICs in place and functioning as designed?	<input checked="" type="checkbox"/>	<input type="checkbox"/>

**IF THE ANSWER TO EITHER QUESTION 6 OR 7 IS NO, sign and date below and  
DO NOT COMPLETE THE REST OF THIS FORM. Otherwise continue.**

**A Corrective Measures Work Plan must be submitted along with this form to address these issues.**

\_\_\_\_\_  
Signature of Owner, Remedial Party or Designated Representative

\_\_\_\_\_  
Date

		<b>Box 2A</b>	
		<b>YES</b>	<b>NO</b>
8.	Has any new information revealed that assumptions made in the Qualitative Exposure Assessment regarding offsite contamination are no longer valid?	<input type="checkbox"/>	<input checked="" type="checkbox"/>
<b>If you answered YES to question 8, include documentation or evidence that documentation has been previously submitted with this certification form.</b>			
9.	Are the assumptions in the Qualitative Exposure Assessment still valid? (The Qualitative Exposure Assessment must be certified every five years)	<input checked="" type="checkbox"/>	<input type="checkbox"/>
<b>If you answered NO to question 9, the Periodic Review Report must include an updated Qualitative Exposure Assessment based on the new assumptions.</b>			

<b>SITE NO. C447042</b>	<b>Box 3</b>
<b>Description of Institutional Controls</b>	

<u>Parcel</u>	<u>Owner</u>	<u>Institutional Control</u>
<b>39.34-1-8 (Portion of)</b>	Maxon ALCO Holdings LLC	<p>Ground Water Use Restriction Soil Management Plan Landuse Restriction Monitoring Plan Site Management Plan IC/EC Plan</p> <p>O&amp;M Plan</p> <p>Institutional Controls (ICs)</p> <ol style="list-style-type: none"> <li>1. The property may be used for: restricted residential use;</li> <li>2. All Engineering Controls (ECs) must be operated and maintained as specified in the Site Management Plan (SMP);</li> <li>3. All ECs must be inspected at a frequency and in a manner defined in the SMP;</li> <li>4. The use of groundwater underlying the property is prohibited without the necessary water quality treatment as determined by the NYSDOH or the Schenectady County Department of Health to render it safe for use as drinking water or for industrial purposes, and the user must first notify and obtain written approval to do so from the Department;</li> <li>5. Groundwater and other environmental or public health monitoring must be performed as defined in this SMP;</li> <li>6. Data and information pertinent to site management must be reported at the frequency and in a manner as defined in this SMP;</li> <li>7. All future activities that will disturb remaining contaminated material must be conducted in accordance with this SMP;</li> <li>8. Monitoring to assess the performance and effectiveness of the remedy must be performed as defined in this SMP;</li> <li>9. Operation, maintenance, monitoring, inspection and reporting of any mechanical or physical component of the remedy shall be performed as defined in this SMP;</li> <li>10. Access to the site must be provided to agents, employees or other representatives of the State of New York with reasonable prior notice to the property owner to assure compliance with the restrictions identified by the Environmental Easement;</li> <li>11. The potential for vapor intrusion must be evaluated for any buildings developed in the area within the IC boundaries noted on Figure 2 in the SMP, and any impacts that are identified must be monitored or mitigated;</li> <li>12. Vegetable gardens and farming on the site are prohibited;</li> <li>13. Appropriate clean soil cover of a minimum thickness of two feet, due to the restricted-residential use, must be maintained on the site;</li> <li>14. The SMP must note that residually-impacted soils are present below the clean soil cover;</li> <li>15. Develop a Soil Vapor Mitigation Plan to guide future building construction; and</li> <li>16. Develop a Groundwater Monitoring Plan to document improving groundwater quality in response to remediation activities.</li> </ol>
<b>39.34-1-9</b>	Maxon ALCO Holdings LLC	<p>O&amp;M Plan Ground Water Use Restriction Soil Management Plan Landuse Restriction Monitoring Plan Site Management Plan IC/EC Plan</p> <p>Institutional Controls (ICs)</p> <ol style="list-style-type: none"> <li>1. The property may be used for: restricted residential use;</li> <li>2. All Engineering Controls (ECs) must be operated and maintained as specified in the Site Management Plan (SMP);</li> <li>3. All ECs must be inspected at a frequency and in a manner defined in the SMP;</li> <li>4. The use of groundwater underlying the property is prohibited without the necessary water quality treatment as determined by the NYSDOH or the Schenectady County Department of Health to render it</li> </ol>

safe for use as drinking water or for industrial purposes, and the user must first notify and obtain written approval to do so from the Department;

5. Groundwater and other environmental or public health monitoring must be performed as defined in this SMP;

6. Data and information pertinent to site management must be reported at the frequency and in a manner as defined in this SMP;

7. All future activities that will disturb remaining contaminated material must be conducted in accordance with this SMP;

8. Monitoring to assess the performance and effectiveness of the remedy must be performed as defined in this SMP;

9. Operation, maintenance, monitoring, inspection and reporting of any mechanical or physical component of the remedy shall be performed as defined in this SMP;

10. Access to the site must be provided to agents, employees or other representatives of the State of New York with reasonable prior notice to the property owner to assure compliance with the restrictions identified by the Environmental Easement;

11. The potential for vapor intrusion must be evaluated for any buildings developed in the area within the IC boundaries noted on Figure 2 in the SMP, and any impacts that are identified must be monitored or mitigated;

12. Vegetable gardens and farming on the site are prohibited;

13. Appropriate clean soil cover of a minimum thickness of two feet, due to the restricted-residential use, must be maintained on the site;

14. The SMP must note that residually-impacted soils are present below the clean soil cover;

15. Develop a Soil Vapor Mitigation Plan to guide future building construction; and

16. Develop a Groundwater Monitoring Plan to document improving groundwater quality in response to remediation activities.

**39.41-1-10**

Maxon ALCO Holdings, LLC

O&M Plan  
Ground Water Use Restriction  
Soil Management Plan  
Landuse Restriction  
Monitoring Plan  
Site Management Plan  
IC/EC Plan

**Institutional Controls (ICs)**

1. The property may be used for: restricted residential use;

2. All Engineering Controls (ECs) must be operated and maintained as specified in the Site Management Plan (SMP);

3. All ECs must be inspected at a frequency and in a manner defined in the SMP;

4. The use of groundwater underlying the property is prohibited without the necessary water quality treatment as determined by the NYSDOH or the Schenectady County Department of Health to render it safe for use as drinking water or for industrial purposes, and the user must first notify and obtain written approval to do so from the Department;

5. Groundwater and other environmental or public health monitoring must be performed as defined in this SMP;

6. Data and information pertinent to site management must be reported at the frequency and in a manner as defined in this SMP;

7. All future activities that will disturb remaining contaminated material must be conducted in accordance with this SMP;

8. Monitoring to assess the performance and effectiveness of the remedy must be performed as defined in this SMP;

9. Operation, maintenance, monitoring, inspection and reporting of any mechanical or physical component of the remedy shall be performed as defined in this SMP;

10. Access to the site must be provided to agents, employees or other representatives of the State of New York with reasonable prior notice to the property owner to assure compliance with the restrictions identified by the Environmental Easement;

11. The potential for vapor intrusion must be evaluated for any buildings developed in the area within the IC boundaries noted on Figure 2 in the SMP, and any impacts that are identified must be monitored or



mitigated;

12. Vegetable gardens and farming on the site are prohibited;
13. Appropriate clean soil cover of a minimum thickness of two feet, due to the restricted-residential use, must be maintained on the site;
14. The SMP must note that residually-impacted soils are present below the clean soil cover;
15. Develop a Soil Vapor Mitigation Plan to guide future building construction; and
16. Develop a Groundwater Monitoring Plan to document improving groundwater quality in response to remediation activities.

**39.41-1-11**

Maxon ALCO Holdings LLC

Ground Water Use Restriction  
Soil Management Plan  
Landuse Restriction  
Monitoring Plan  
Site Management Plan  
IC/EC Plan

O&M Plan

Institutional Controls (ICs)

1. The property may be used for: restricted residential use;
2. All Engineering Controls (ECs) must be operated and maintained as specified in the Site Management Plan (SMP);
3. All ECs must be inspected at a frequency and in a manner defined in the SMP;
4. The use of groundwater underlying the property is prohibited without the necessary water quality treatment as determined by the NYSDOH or the Schenectady County Department of Health to render it safe for use as drinking water or for industrial purposes, and the user must first notify and obtain written approval to do so from the Department;
5. Groundwater and other environmental or public health monitoring must be performed as defined in this SMP;
6. Data and information pertinent to site management must be reported at the frequency and in a manner as defined in this SMP;
7. All future activities that will disturb remaining contaminated material must be conducted in accordance with this SMP;
8. Monitoring to assess the performance and effectiveness of the remedy must be performed as defined in this SMP;
9. Operation, maintenance, monitoring, inspection and reporting of any mechanical or physical component of the remedy shall be performed as defined in this SMP;
10. Access to the site must be provided to agents, employees or other representatives of the State of New York with reasonable prior notice to the property owner to assure compliance with the restrictions identified by the Environmental Easement;
11. The potential for vapor intrusion must be evaluated for any buildings developed in the area within the IC boundaries noted on Figure 2 in the SMP, and any impacts that are identified must be monitored or mitigated;
12. Vegetable gardens and farming on the site are prohibited;
13. Appropriate clean soil cover of a minimum thickness of two feet, due to the restricted-residential use, must be maintained on the site;
14. The SMP must note that residually-impacted soils are present below the clean soil cover;
15. Develop a Soil Vapor Mitigation Plan to guide future building construction; and
16. Develop a Groundwater Monitoring Plan to document improving groundwater quality in response to remediation activities.

**39.41-1-12**

Maxon ALCO Holdings LLC

O&M Plan  
Ground Water Use Restriction  
Soil Management Plan  
Landuse Restriction  
Monitoring Plan  
Site Management Plan  
IC/EC Plan

Institutional Controls (ICs)

1. The property may be used for: restricted residential use;
2. All Engineering Controls (ECs) must be operated and maintained as specified in the Site Management Plan (SMP);
3. All ECs must be inspected at a frequency and in a manner defined in the SMP;
4. The use of groundwater underlying the property is prohibited without the necessary water quality treatment as determined by the NYSDOH or the Schenectady County Department of Health to render it safe for use as drinking water or for industrial purposes, and the user must first notify and obtain written approval to do so from the Department;
5. Groundwater and other environmental or public health monitoring must be performed as defined in this SMP;
6. Data and information pertinent to site management must be reported at the frequency and in a manner as defined in this SMP;
7. All future activities that will disturb remaining contaminated material must be conducted in accordance with this SMP;
8. Monitoring to assess the performance and effectiveness of the remedy must be performed as defined in this SMP;
9. Operation, maintenance, monitoring, inspection and reporting of any mechanical or physical component of the remedy shall be performed as defined in this SMP;
10. Access to the site must be provided to agents, employees or other representatives of the State of New York with reasonable prior notice to the property owner to assure compliance with the restrictions identified by the Environmental Easement;
11. The potential for vapor intrusion must be evaluated for any buildings developed in the area within the IC boundaries noted on Figure 2 in the SMP, and any impacts that are identified must be monitored or mitigated;
12. Vegetable gardens and farming on the site are prohibited;
13. Appropriate clean soil cover of a minimum thickness of two feet, due to the restricted-residential use, must be maintained on the site;
14. The SMP must note that residually-impacted soils are present below the clean soil cover;
15. Develop a Soil Vapor Mitigation Plan to guide future building construction; and
16. Develop a Groundwater Monitoring Plan to document improving groundwater quality in response to remediation activities.

**39.41-1-13**

Maxon ALCO Holdings LLC

Ground Water Use Restriction  
Soil Management Plan  
Landuse Restriction  
Monitoring Plan  
Site Management Plan  
IC/EC Plan

O&M Plan

Institutional Controls (ICs)

1. The property may be used for: restricted residential use;
2. All Engineering Controls (ECs) must be operated and maintained as specified in the Site Management Plan (SMP);
3. All ECs must be inspected at a frequency and in a manner defined in the SMP;
4. The use of groundwater underlying the property is prohibited without the necessary water quality treatment as determined by the NYSDOH or the Schenectady County Department of Health to render it safe for use as drinking water or for industrial purposes, and the user must first notify and obtain written approval to do so from the Department;
5. Groundwater and other environmental or public health monitoring must be performed as defined in this SMP;
6. Data and information pertinent to site management must be reported at the frequency and in a manner as defined in this SMP;
7. All future activities that will disturb remaining contaminated material must be conducted in accordance with this SMP;
8. Monitoring to assess the performance and effectiveness of the remedy must be performed as defined in this SMP;

9. Operation, maintenance, monitoring, inspection and reporting of any mechanical or physical component of the remedy shall be performed as defined in this SMP;
10. Access to the site must be provided to agents, employees or other representatives of the State of New York with reasonable prior notice to the property owner to assure compliance with the restrictions identified by the Environmental Easement;
11. The potential for vapor intrusion must be evaluated for any buildings developed in the area within the IC boundaries noted on Figure 2 in the SMP, and any impacts that are identified must be monitored or mitigated;
12. Vegetable gardens and farming on the site are prohibited;
13. Appropriate clean soil cover of a minimum thickness of two feet, due to the restricted-residential use, must be maintained on the site;
14. The SMP must note that residually-impacted soils are present below the clean soil cover;
15. Develop a Soil Vapor Mitigation Plan to guide future building construction; and
16. Develop a Groundwater Monitoring Plan to document improving groundwater quality in response to remediation activities.

**39.41-1-14**

Maxon ALCO Holdings LLC

O&M Plan  
Ground Water Use Restriction  
Soil Management Plan  
Landuse Restriction  
Monitoring Plan  
Site Management Plan  
IC/EC Plan

#### Institutional Controls (ICs)

1. The property may be used for: restricted residential use;
2. All Engineering Controls (ECs) must be operated and maintained as specified in the Site Management Plan (SMP);
3. All ECs must be inspected at a frequency and in a manner defined in the SMP;
4. The use of groundwater underlying the property is prohibited without the necessary water quality treatment as determined by the NYSDOH or the Schenectady County Department of Health to render it safe for use as drinking water or for industrial purposes, and the user must first notify and obtain written approval to do so from the Department;
5. Groundwater and other environmental or public health monitoring must be performed as defined in this SMP;
6. Data and information pertinent to site management must be reported at the frequency and in a manner as defined in this SMP;
7. All future activities that will disturb remaining contaminated material must be conducted in accordance with this SMP;
8. Monitoring to assess the performance and effectiveness of the remedy must be performed as defined in this SMP;
9. Operation, maintenance, monitoring, inspection and reporting of any mechanical or physical component of the remedy shall be performed as defined in this SMP;
10. Access to the site must be provided to agents, employees or other representatives of the State of New York with reasonable prior notice to the property owner to assure compliance with the restrictions identified by the Environmental Easement;
11. The potential for vapor intrusion must be evaluated for any buildings developed in the area within the IC boundaries noted on Figure 2 in the SMP, and any impacts that are identified must be monitored or mitigated;
12. Vegetable gardens and farming on the site are prohibited;
13. Appropriate clean soil cover of a minimum thickness of two feet, due to the restricted-residential use, must be maintained on the site;
14. The SMP must note that residually-impacted soils are present below the clean soil cover;
15. Develop a Soil Vapor Mitigation Plan to guide future building construction; and
16. Develop a Groundwater Monitoring Plan to document improving groundwater quality in response to remediation activities.

**39.41-1-15**

Maxon ALCO Holdings LLC

Ground Water Use Restriction

Soil Management Plan  
Landuse Restriction  
Monitoring Plan  
Site Management Plan  
IC/EC Plan

O&M Plan

Institutional Controls (ICs)

1. The property may be used for: restricted residential use;
2. All Engineering Controls (ECs) must be operated and maintained as specified in the Site Management Plan (SMP);
3. All ECs must be inspected at a frequency and in a manner defined in the SMP;
4. The use of groundwater underlying the property is prohibited without the necessary water quality treatment as determined by the NYSDOH or the Schenectady County Department of Health to render it safe for use as drinking water or for industrial purposes, and the user must first notify and obtain written approval to do so from the Department;
5. Groundwater and other environmental or public health monitoring must be performed as defined in this SMP;
6. Data and information pertinent to site management must be reported at the frequency and in a manner as defined in this SMP;
7. All future activities that will disturb remaining contaminated material must be conducted in accordance with this SMP;
8. Monitoring to assess the performance and effectiveness of the remedy must be performed as defined in this SMP;
9. Operation, maintenance, monitoring, inspection and reporting of any mechanical or physical component of the remedy shall be performed as defined in this SMP;
10. Access to the site must be provided to agents, employees or other representatives of the State of New York with reasonable prior notice to the property owner to assure compliance with the restrictions identified by the Environmental Easement;
11. The potential for vapor intrusion must be evaluated for any buildings developed in the area within the IC boundaries noted on Figure 2 in the SMP, and any impacts that are identified must be monitored or mitigated;
12. Vegetable gardens and farming on the site are prohibited;
13. Appropriate clean soil cover of a minimum thickness of two feet, due to the restricted-residential use, must be maintained on the site;
14. The SMP must note that residually-impacted soils are present below the clean soil cover;
15. Develop a Soil Vapor Mitigation Plan to guide future building construction; and
16. Develop a Groundwater Monitoring Plan to document improving groundwater quality in response to remediation activities.

**39.41-1-16**

Maxon ALCO Holdings LLC

O&M Plan  
Ground Water Use Restriction  
Soil Management Plan  
Landuse Restriction  
Monitoring Plan  
Site Management Plan  
IC/EC Plan

Institutional Controls (ICs)

1. The property may be used for: restricted residential use;
2. All Engineering Controls (ECs) must be operated and maintained as specified in the Site Management Plan (SMP);
3. All ECs must be inspected at a frequency and in a manner defined in the SMP;
4. The use of groundwater underlying the property is prohibited without the necessary water quality treatment as determined by the NYSDOH or the Schenectady County Department of Health to render it safe for use as drinking water or for industrial purposes, and the user must first notify and obtain written approval to do so from the Department;
5. Groundwater and other environmental or public health monitoring must be performed as defined in this

SMP;

6. Data and information pertinent to site management must be reported at the frequency and in a manner as defined in this SMP;

7. All future activities that will disturb remaining contaminated material must be conducted in accordance with this SMP;

8. Monitoring to assess the performance and effectiveness of the remedy must be performed as defined in this SMP;

9. Operation, maintenance, monitoring, inspection and reporting of any mechanical or physical component of the remedy shall be performed as defined in this SMP;

10. Access to the site must be provided to agents, employees or other representatives of the State of New York with reasonable prior notice to the property owner to assure compliance with the restrictions identified by the Environmental Easement;

11. The potential for vapor intrusion must be evaluated for any buildings developed in the area within the IC boundaries noted on Figure 2 in the SMP, and any impacts that are identified must be monitored or mitigated;

12. Vegetable gardens and farming on the site are prohibited;

13. Appropriate clean soil cover of a minimum thickness of two feet, due to the restricted-residential use, must be maintained on the site;

14. The SMP must note that residually-impacted soils are present below the clean soil cover;

15. Develop a Soil Vapor Mitigation Plan to guide future building construction; and

16. Develop a Groundwater Monitoring Plan to document improving groundwater quality in response to remediation activities.

**39.41-1-17**

Maxon ALCO Holdings LLC

Ground Water Use Restriction  
Soil Management Plan  
Landuse Restriction  
Monitoring Plan  
Site Management Plan  
IC/EC Plan

O&M Plan

Institutional Controls (ICs)

1. The property may be used for: restricted residential use;

2. All Engineering Controls (ECs) must be operated and maintained as specified in the Site Management Plan (SMP);

3. All ECs must be inspected at a frequency and in a manner defined in the SMP;

4. The use of groundwater underlying the property is prohibited without the necessary water quality treatment as determined by the NYSDOH or the Schenectady County Department of Health to render it safe for use as drinking water or for industrial purposes, and the user must first notify and obtain written approval to do so from the Department;

5. Groundwater and other environmental or public health monitoring must be performed as defined in this SMP;

6. Data and information pertinent to site management must be reported at the frequency and in a manner as defined in this SMP;

7. All future activities that will disturb remaining contaminated material must be conducted in accordance with this SMP;

8. Monitoring to assess the performance and effectiveness of the remedy must be performed as defined in this SMP;

9. Operation, maintenance, monitoring, inspection and reporting of any mechanical or physical component of the remedy shall be performed as defined in this SMP;

10. Access to the site must be provided to agents, employees or other representatives of the State of New York with reasonable prior notice to the property owner to assure compliance with the restrictions identified by the Environmental Easement;

11. The potential for vapor intrusion must be evaluated for any buildings developed in the area within the IC boundaries noted on Figure 2 in the SMP, and any impacts that are identified must be monitored or mitigated;

12. Vegetable gardens and farming on the site are prohibited;

13. Appropriate clean soil cover of a minimum thickness of two feet, due to the restricted-residential use,

must be maintained on the site;

14. The SMP must note that residually-impacted soils are present below the clean soil cover;

15. Develop a Soil Vapor Mitigation Plan to guide future building construction; and

16. Develop a Groundwater Monitoring Plan to document improving groundwater quality in response to remediation activities.

**39.41-1-18**

Maxon ALCO Holdings LLC

O&M Plan  
Ground Water Use Restriction  
Soil Management Plan  
Landuse Restriction  
Monitoring Plan  
Site Management Plan  
IC/EC Plan

Institutional Controls (ICs)

1. The property may be used for: restricted residential use;

2. All Engineering Controls (ECs) must be operated and maintained as specified in the Site Management Plan (SMP);

3. All ECs must be inspected at a frequency and in a manner defined in the SMP;

4. The use of groundwater underlying the property is prohibited without the necessary water quality treatment as determined by the NYSDOH or the Schenectady County Department of Health to render it safe for use as drinking water or for industrial purposes, and the user must first notify and obtain written approval to do so from the Department;

5. Groundwater and other environmental or public health monitoring must be performed as defined in this SMP;

6. Data and information pertinent to site management must be reported at the frequency and in a manner as defined in this SMP;

7. All future activities that will disturb remaining contaminated material must be conducted in accordance with this SMP;

8. Monitoring to assess the performance and effectiveness of the remedy must be performed as defined in this SMP;

9. Operation, maintenance, monitoring, inspection and reporting of any mechanical or physical component of the remedy shall be performed as defined in this SMP;

10. Access to the site must be provided to agents, employees or other representatives of the State of New York with reasonable prior notice to the property owner to assure compliance with the restrictions identified by the Environmental Easement;

11. The potential for vapor intrusion must be evaluated for any buildings developed in the area within the IC boundaries noted on Figure 2 in the SMP, and any impacts that are identified must be monitored or mitigated;

12. Vegetable gardens and farming on the site are prohibited;

13. Appropriate clean soil cover of a minimum thickness of two feet, due to the restricted-residential use, must be maintained on the site;

14. The SMP must note that residually-impacted soils are present below the clean soil cover;

15. Develop a Soil Vapor Mitigation Plan to guide future building construction; and

16. Develop a Groundwater Monitoring Plan to document improving groundwater quality in response to remediation activities.

**39.41-1-19**

Maxon ALCO Holdings LLC

Ground Water Use Restriction  
Soil Management Plan  
Landuse Restriction  
Monitoring Plan  
Site Management Plan  
IC/EC Plan

O&M Plan

Institutional Controls (ICs)

1. The property may be used for: restricted residential use;

2. All Engineering Controls (ECs) must be operated and maintained as specified in the Site Management

Plan (SMP);

3. All ECs must be inspected at a frequency and in a manner defined in the SMP;
4. The use of groundwater underlying the property is prohibited without the necessary water quality treatment as determined by the NYSDOH or the Schenectady County Department of Health to render it safe for use as drinking water or for industrial purposes, and the user must first notify and obtain written approval to do so from the Department;
5. Groundwater and other environmental or public health monitoring must be performed as defined in this SMP;
6. Data and information pertinent to site management must be reported at the frequency and in a manner as defined in this SMP;
7. All future activities that will disturb remaining contaminated material must be conducted in accordance with this SMP;
8. Monitoring to assess the performance and effectiveness of the remedy must be performed as defined in this SMP;
9. Operation, maintenance, monitoring, inspection and reporting of any mechanical or physical component of the remedy shall be performed as defined in this SMP;
10. Access to the site must be provided to agents, employees or other representatives of the State of New York with reasonable prior notice to the property owner to assure compliance with the restrictions identified by the Environmental Easement;
11. The potential for vapor intrusion must be evaluated for any buildings developed in the area within the IC boundaries noted on Figure 2 in the SMP, and any impacts that are identified must be monitored or mitigated;
12. Vegetable gardens and farming on the site are prohibited;
13. Appropriate clean soil cover of a minimum thickness of two feet, due to the restricted-residential use, must be maintained on the site;
14. The SMP must note that residually-impacted soils are present below the clean soil cover;
15. Develop a Soil Vapor Mitigation Plan to guide future building construction; and
16. Develop a Groundwater Monitoring Plan to document improving groundwater quality in response to remediation activities.

**39.41-1-20**

Maxon ALCO Holdings LLC

O&M Plan  
Ground Water Use Restriction  
Soil Management Plan  
Landuse Restriction  
Monitoring Plan  
Site Management Plan  
IC/EC Plan

Institutional Controls (ICs)

1. The property may be used for: restricted residential use;
2. All Engineering Controls (ECs) must be operated and maintained as specified in the Site Management Plan (SMP);
3. All ECs must be inspected at a frequency and in a manner defined in the SMP;
4. The use of groundwater underlying the property is prohibited without the necessary water quality treatment as determined by the NYSDOH or the Schenectady County Department of Health to render it safe for use as drinking water or for industrial purposes, and the user must first notify and obtain written approval to do so from the Department;
5. Groundwater and other environmental or public health monitoring must be performed as defined in this SMP;
6. Data and information pertinent to site management must be reported at the frequency and in a manner as defined in this SMP;
7. All future activities that will disturb remaining contaminated material must be conducted in accordance with this SMP;
8. Monitoring to assess the performance and effectiveness of the remedy must be performed as defined in this SMP;
9. Operation, maintenance, monitoring, inspection and reporting of any mechanical or physical component of the remedy shall be performed as defined in this SMP;
10. Access to the site must be provided to agents, employees or other representatives of the State of New

York with reasonable prior notice to the property owner to assure compliance with the restrictions identified by the Environmental Easement;

11. The potential for vapor intrusion must be evaluated for any buildings developed in the area within the IC boundaries noted on Figure 2 in the SMP, and any impacts that are identified must be monitored or mitigated;

12. Vegetable gardens and farming on the site are prohibited;

13. Appropriate clean soil cover of a minimum thickness of two feet, due to the restricted-residential use, must be maintained on the site;

14. The SMP must note that residually-impacted soils are present below the clean soil cover;

15. Develop a Soil Vapor Mitigation Plan to guide future building construction; and

16. Develop a Groundwater Monitoring Plan to document improving groundwater quality in response to remediation activities.

**39.41-1-21**

Maxon ALCO Holdings LLC

Ground Water Use Restriction  
Soil Management Plan  
Landuse Restriction  
Monitoring Plan  
Site Management Plan  
IC/EC Plan

O&M Plan

Institutional Controls (ICs)

1. The property may be used for: restricted residential use;

2. All Engineering Controls (ECs) must be operated and maintained as specified in the Site Management Plan (SMP);

3. All ECs must be inspected at a frequency and in a manner defined in the SMP;

4. The use of groundwater underlying the property is prohibited without the necessary water quality treatment as determined by the NYSDOH or the Schenectady County Department of Health to render it safe for use as drinking water or for industrial purposes, and the user must first notify and obtain written approval to do so from the Department;

5. Groundwater and other environmental or public health monitoring must be performed as defined in this SMP;

6. Data and information pertinent to site management must be reported at the frequency and in a manner as defined in this SMP;

7. All future activities that will disturb remaining contaminated material must be conducted in accordance with this SMP;

8. Monitoring to assess the performance and effectiveness of the remedy must be performed as defined in this SMP;

9. Operation, maintenance, monitoring, inspection and reporting of any mechanical or physical component of the remedy shall be performed as defined in this SMP;

10. Access to the site must be provided to agents, employees or other representatives of the State of New York with reasonable prior notice to the property owner to assure compliance with the restrictions identified by the Environmental Easement;

11. The potential for vapor intrusion must be evaluated for any buildings developed in the area within the IC boundaries noted on Figure 2 in the SMP, and any impacts that are identified must be monitored or mitigated;

12. Vegetable gardens and farming on the site are prohibited;

13. Appropriate clean soil cover of a minimum thickness of two feet, due to the restricted-residential use, must be maintained on the site;

14. The SMP must note that residually-impacted soils are present below the clean soil cover;

15. Develop a Soil Vapor Mitigation Plan to guide future building construction; and

16. Develop a Groundwater Monitoring Plan to document improving groundwater quality in response to remediation activities.

**39.41-1-22**

Maxon ALCO Holdings LLC

O&M Plan  
Ground Water Use Restriction  
Soil Management Plan  
Landuse Restriction



Monitoring Plan  
Site Management Plan  
IC/EC Plan

Institutional Controls (ICs)

1. The property may be used for: restricted residential use;
2. All Engineering Controls (ECs) must be operated and maintained as specified in the Site Management Plan (SMP);
3. All ECs must be inspected at a frequency and in a manner defined in the SMP;
4. The use of groundwater underlying the property is prohibited without the necessary water quality treatment as determined by the NYSDOH or the Schenectady County Department of Health to render it safe for use as drinking water or for industrial purposes, and the user must first notify and obtain written approval to do so from the Department;
5. Groundwater and other environmental or public health monitoring must be performed as defined in this SMP;
6. Data and information pertinent to site management must be reported at the frequency and in a manner as defined in this SMP;
7. All future activities that will disturb remaining contaminated material must be conducted in accordance with this SMP;
8. Monitoring to assess the performance and effectiveness of the remedy must be performed as defined in this SMP;
9. Operation, maintenance, monitoring, inspection and reporting of any mechanical or physical component of the remedy shall be performed as defined in this SMP;
10. Access to the site must be provided to agents, employees or other representatives of the State of New York with reasonable prior notice to the property owner to assure compliance with the restrictions identified by the Environmental Easement;
11. The potential for vapor intrusion must be evaluated for any buildings developed in the area within the IC boundaries noted on Figure 2 in the SMP, and any impacts that are identified must be monitored or mitigated;
12. Vegetable gardens and farming on the site are prohibited;
13. Appropriate clean soil cover of a minimum thickness of two feet, due to the restricted-residential use, must be maintained on the site;
14. The SMP must note that residually-impacted soils are present below the clean soil cover;
15. Develop a Soil Vapor Mitigation Plan to guide future building construction; and
16. Develop a Groundwater Monitoring Plan to document improving groundwater quality in response to remediation activities.

**39.41-1-23**

Maxon ALCO Holdings LLC

Ground Water Use Restriction  
Soil Management Plan  
Landuse Restriction  
Monitoring Plan  
Site Management Plan  
IC/EC Plan

O&M Plan

Institutional Controls (ICs)

1. The property may be used for: restricted residential use;
2. All Engineering Controls (ECs) must be operated and maintained as specified in the Site Management Plan (SMP);
3. All ECs must be inspected at a frequency and in a manner defined in the SMP;
4. The use of groundwater underlying the property is prohibited without the necessary water quality treatment as determined by the NYSDOH or the Schenectady County Department of Health to render it safe for use as drinking water or for industrial purposes, and the user must first notify and obtain written approval to do so from the Department;
5. Groundwater and other environmental or public health monitoring must be performed as defined in this SMP;
6. Data and information pertinent to site management must be reported at the frequency and in a manner as defined in this SMP;

7. All future activities that will disturb remaining contaminated material must be conducted in accordance with this SMP;
8. Monitoring to assess the performance and effectiveness of the remedy must be performed as defined in this SMP;
9. Operation, maintenance, monitoring, inspection and reporting of any mechanical or physical component of the remedy shall be performed as defined in this SMP;
10. Access to the site must be provided to agents, employees or other representatives of the State of New York with reasonable prior notice to the property owner to assure compliance with the restrictions identified by the Environmental Easement;
11. The potential for vapor intrusion must be evaluated for any buildings developed in the area within the IC boundaries noted on Figure 2 in the SMP, and any impacts that are identified must be monitored or mitigated;
12. Vegetable gardens and farming on the site are prohibited;
13. Appropriate clean soil cover of a minimum thickness of two feet, due to the restricted-residential use, must be maintained on the site;
14. The SMP must note that residually-impacted soils are present below the clean soil cover;
15. Develop a Soil Vapor Mitigation Plan to guide future building construction; and
16. Develop a Groundwater Monitoring Plan to document improving groundwater quality in response to remediation activities.

**39.41-1-24**

Maxon ALCO Holdings LLC

O&M Plan  
Ground Water Use Restriction  
Soil Management Plan  
Landuse Restriction  
Monitoring Plan  
Site Management Plan  
IC/EC Plan

#### Institutional Controls (ICs)

1. The property may be used for: restricted residential use;
2. All Engineering Controls (ECs) must be operated and maintained as specified in the Site Management Plan (SMP);
3. All ECs must be inspected at a frequency and in a manner defined in the SMP;
4. The use of groundwater underlying the property is prohibited without the necessary water quality treatment as determined by the NYSDOH or the Schenectady County Department of Health to render it safe for use as drinking water or for industrial purposes, and the user must first notify and obtain written approval to do so from the Department;
5. Groundwater and other environmental or public health monitoring must be performed as defined in this SMP;
6. Data and information pertinent to site management must be reported at the frequency and in a manner as defined in this SMP;
7. All future activities that will disturb remaining contaminated material must be conducted in accordance with this SMP;
8. Monitoring to assess the performance and effectiveness of the remedy must be performed as defined in this SMP;
9. Operation, maintenance, monitoring, inspection and reporting of any mechanical or physical component of the remedy shall be performed as defined in this SMP;
10. Access to the site must be provided to agents, employees or other representatives of the State of New York with reasonable prior notice to the property owner to assure compliance with the restrictions identified by the Environmental Easement;
11. The potential for vapor intrusion must be evaluated for any buildings developed in the area within the IC boundaries noted on Figure 2 in the SMP, and any impacts that are identified must be monitored or mitigated;
12. Vegetable gardens and farming on the site are prohibited;
13. Appropriate clean soil cover of a minimum thickness of two feet, due to the restricted-residential use, must be maintained on the site;
14. The SMP must note that residually-impacted soils are present below the clean soil cover;
15. Develop a Soil Vapor Mitigation Plan to guide future building construction; and

16. Develop a Groundwater Monitoring Plan to document improving groundwater quality in response to remediation activities.

**39.41-1-4 (Portion of)**

Maxon ALCO Holdings, LLC

O&M Plan  
Ground Water Use Restriction  
Soil Management Plan  
Monitoring Plan  
Site Management Plan  
IC/EC Plan

Landuse Restriction

Institutional Controls (ICs)

1. The property may be used for: restricted residential use;
2. All Engineering Controls (ECs) must be operated and maintained as specified in the Site Management Plan (SMP);
3. All ECs must be inspected at a frequency and in a manner defined in the SMP;
4. The use of groundwater underlying the property is prohibited without the necessary water quality treatment as determined by the NYSDOH or the Schenectady County Department of Health to render it safe for use as drinking water or for industrial purposes, and the user must first notify and obtain written approval to do so from the Department;
5. Groundwater and other environmental or public health monitoring must be performed as defined in this SMP;
6. Data and information pertinent to site management must be reported at the frequency and in a manner as defined in this SMP;
7. All future activities that will disturb remaining contaminated material must be conducted in accordance with this SMP;
8. Monitoring to assess the performance and effectiveness of the remedy must be performed as defined in this SMP;
9. Operation, maintenance, monitoring, inspection and reporting of any mechanical or physical component of the remedy shall be performed as defined in this SMP;
10. Access to the site must be provided to agents, employees or other representatives of the State of New York with reasonable prior notice to the property owner to assure compliance with the restrictions identified by the Environmental Easement;
11. The potential for vapor intrusion must be evaluated for any buildings developed in the area within the IC boundaries noted on Figure 2 in the SMP, and any impacts that are identified must be monitored or mitigated;
12. Vegetable gardens and farming on the site are prohibited;
13. Appropriate clean soil cover of a minimum thickness of two feet, due to the restricted-residential use, must be maintained on the site;
14. The SMP must note that residually-impacted soils are present below the clean soil cover;
15. Develop a Soil Vapor Mitigation Plan to guide future building construction; and
16. Develop a Groundwater Monitoring Plan to document improving groundwater quality in response to remediation activities.

**39.41-1-5 (Portion of)**

Maxon ALCO Holdings, LLC

Ground Water Use Restriction  
Soil Management Plan  
Landuse Restriction  
Monitoring Plan  
Site Management Plan  
IC/EC Plan

O&M Plan

Institutional Controls (ICs)

1. The property may be used for: restricted residential use;
2. All Engineering Controls (ECs) must be operated and maintained as specified in the Site Management Plan (SMP);
3. All ECs must be inspected at a frequency and in a manner defined in the SMP;
4. The use of groundwater underlying the property is prohibited without the necessary water quality

treatment as determined by the NYSDOH or the Schenectady County Department of Health to render it safe for use as drinking water or for industrial purposes, and the user must first notify and obtain written approval to do so from the Department;

5. Groundwater and other environmental or public health monitoring must be performed as defined in this SMP;

6. Data and information pertinent to site management must be reported at the frequency and in a manner as defined in this SMP;

7. All future activities that will disturb remaining contaminated material must be conducted in accordance with this SMP;

8. Monitoring to assess the performance and effectiveness of the remedy must be performed as defined in this SMP;

9. Operation, maintenance, monitoring, inspection and reporting of any mechanical or physical component of the remedy shall be performed as defined in this SMP;

10. Access to the site must be provided to agents, employees or other representatives of the State of New York with reasonable prior notice to the property owner to assure compliance with the restrictions identified by the Environmental Easement;

11. The potential for vapor intrusion must be evaluated for any buildings developed in the area within the IC boundaries noted on Figure 2 in the SMP, and any impacts that are identified must be monitored or mitigated;

12. Vegetable gardens and farming on the site are prohibited;

13. Appropriate clean soil cover of a minimum thickness of two feet, due to the restricted-residential use, must be maintained on the site;

14. The SMP must note that residually-impacted soils are present below the clean soil cover;

15. Develop a Soil Vapor Mitigation Plan to guide future building construction; and

16. Develop a Groundwater Monitoring Plan to document improving groundwater quality in response to remediation activities.

**39.41-1-6 (Portion of)** Maxon ALCO Holdings, LLC

O&M Plan  
Ground Water Use Restriction  
Soil Management Plan  
Landuse Restriction  
Monitoring Plan  
Site Management Plan  
IC/EC Plan

#### Institutional Controls (ICs)

1. The property may be used for: restricted residential use;

2. All Engineering Controls (ECs) must be operated and maintained as specified in the Site Management Plan (SMP);

3. All ECs must be inspected at a frequency and in a manner defined in the SMP;

4. The use of groundwater underlying the property is prohibited without the necessary water quality treatment as determined by the NYSDOH or the Schenectady County Department of Health to render it safe for use as drinking water or for industrial purposes, and the user must first notify and obtain written approval to do so from the Department;

5. Groundwater and other environmental or public health monitoring must be performed as defined in this SMP;

6. Data and information pertinent to site management must be reported at the frequency and in a manner as defined in this SMP;

7. All future activities that will disturb remaining contaminated material must be conducted in accordance with this SMP;

8. Monitoring to assess the performance and effectiveness of the remedy must be performed as defined in this SMP;

9. Operation, maintenance, monitoring, inspection and reporting of any mechanical or physical component of the remedy shall be performed as defined in this SMP;

10. Access to the site must be provided to agents, employees or other representatives of the State of New York with reasonable prior notice to the property owner to assure compliance with the restrictions identified by the Environmental Easement;

11. The potential for vapor intrusion must be evaluated for any buildings developed in the area within the IC

boundaries noted on Figure 2 in the SMP, and any impacts that are identified must be monitored or mitigated;

12. Vegetable gardens and farming on the site are prohibited;
13. Appropriate clean soil cover of a minimum thickness of two feet, due to the restricted-residential use, must be maintained on the site;
14. The SMP must note that residually-impacted soils are present below the clean soil cover;
15. Develop a Soil Vapor Mitigation Plan to guide future building construction; and
16. Develop a Groundwater Monitoring Plan to document improving groundwater quality in response to remediation activities.

**39.41-1-7**

Maxon ALCO Holdings, LLC

Ground Water Use Restriction  
Soil Management Plan  
Landuse Restriction  
Monitoring Plan  
Site Management Plan  
IC/EC Plan

O&M Plan

Institutional Controls (ICs)

1. The property may be used for: restricted residential use;
2. All Engineering Controls (ECs) must be operated and maintained as specified in the Site Management Plan (SMP);
3. All ECs must be inspected at a frequency and in a manner defined in the SMP;
4. The use of groundwater underlying the property is prohibited without the necessary water quality treatment as determined by the NYSDOH or the Schenectady County Department of Health to render it safe for use as drinking water or for industrial purposes, and the user must first notify and obtain written approval to do so from the Department;
5. Groundwater and other environmental or public health monitoring must be performed as defined in this SMP;
6. Data and information pertinent to site management must be reported at the frequency and in a manner as defined in this SMP;
7. All future activities that will disturb remaining contaminated material must be conducted in accordance with this SMP;
8. Monitoring to assess the performance and effectiveness of the remedy must be performed as defined in this SMP;
9. Operation, maintenance, monitoring, inspection and reporting of any mechanical or physical component of the remedy shall be performed as defined in this SMP;
10. Access to the site must be provided to agents, employees or other representatives of the State of New York with reasonable prior notice to the property owner to assure compliance with the restrictions identified by the Environmental Easement;
11. The potential for vapor intrusion must be evaluated for any buildings developed in the area within the IC boundaries noted on Figure 2 in the SMP, and any impacts that are identified must be monitored or mitigated;
12. Vegetable gardens and farming on the site are prohibited;
13. Appropriate clean soil cover of a minimum thickness of two feet, due to the restricted-residential use, must be maintained on the site;
14. The SMP must note that residually-impacted soils are present below the clean soil cover;
15. Develop a Soil Vapor Mitigation Plan to guide future building construction; and
16. Develop a Groundwater Monitoring Plan to document improving groundwater quality in response to remediation activities.

**39.41-1-9**

Maxon ALCO Holdings, LLC

O&M Plan  
Ground Water Use Restriction  
Soil Management Plan  
Landuse Restriction  
Monitoring Plan  
Site Management Plan  
IC/EC Plan

Institutional Controls (ICs)

1. The property may be used for: restricted residential use;
2. All Engineering Controls (ECs) must be operated and maintained as specified in the Site Management Plan (SMP);
3. All ECs must be inspected at a frequency and in a manner defined in the SMP;
4. The use of groundwater underlying the property is prohibited without the necessary water quality treatment as determined by the NYSDOH or the Schenectady County Department of Health to render it safe for use as drinking water or for industrial purposes, and the user must first notify and obtain written approval to do so from the Department;
5. Groundwater and other environmental or public health monitoring must be performed as defined in this SMP;
6. Data and information pertinent to site management must be reported at the frequency and in a manner as defined in this SMP;
7. All future activities that will disturb remaining contaminated material must be conducted in accordance with this SMP;
8. Monitoring to assess the performance and effectiveness of the remedy must be performed as defined in this SMP;
9. Operation, maintenance, monitoring, inspection and reporting of any mechanical or physical component of the remedy shall be performed as defined in this SMP;
10. Access to the site must be provided to agents, employees or other representatives of the State of New York with reasonable prior notice to the property owner to assure compliance with the restrictions identified by the Environmental Easement;
11. The potential for vapor intrusion must be evaluated for any buildings developed in the area within the IC boundaries noted on Figure 2 in the SMP, and any impacts that are identified must be monitored or mitigated;
12. Vegetable gardens and farming on the site are prohibited;
13. Appropriate clean soil cover of a minimum thickness of two feet, due to the restricted-residential use, must be maintained on the site;
14. The SMP must note that residually-impacted soils are present below the clean soil cover;
15. Develop a Soil Vapor Mitigation Plan to guide future building construction; and
16. Develop a Groundwater Monitoring Plan to document improving groundwater quality in response to remediation activities.

**39.49-2-1.7 (Portion of)** Maxon ALCO Holdings LLC

O&M Plan  
Ground Water Use Restriction  
Soil Management Plan  
Landuse Restriction  
Monitoring Plan  
Site Management Plan  
IC/EC Plan

Institutional Controls (ICs)

1. The property may be used for: restricted residential use;
2. All Engineering Controls (ECs) must be operated and maintained as specified in the Site Management Plan (SMP);
3. All ECs must be inspected at a frequency and in a manner defined in the SMP;
4. The use of groundwater underlying the property is prohibited without the necessary water quality treatment as determined by the NYSDOH or the Schenectady County Department of Health to render it safe for use as drinking water or for industrial purposes, and the user must first notify and obtain written approval to do so from the Department;
5. Groundwater and other environmental or public health monitoring must be performed as defined in this SMP;
6. Data and information pertinent to site management must be reported at the frequency and in a manner as defined in this SMP;
7. All future activities that will disturb remaining contaminated material must be conducted in accordance with this SMP;
8. Monitoring to assess the performance and effectiveness of the remedy must be performed as defined in

this SMP;

9. Operation, maintenance, monitoring, inspection and reporting of any mechanical or physical component of the remedy shall be performed as defined in this SMP;

10. Access to the site must be provided to agents, employees or other representatives of the State of New York with reasonable prior notice to the property owner to assure compliance with the restrictions identified by the Environmental Easement;

11. The potential for vapor intrusion must be evaluated for any buildings developed in the area within the IC boundaries noted on Figure 2 in the SMP, and any impacts that are identified must be monitored or mitigated;

12. Vegetable gardens and farming on the site are prohibited;

13. Appropriate clean soil cover of a minimum thickness of two feet, due to the restricted-residential use, must be maintained on the site;

14. The SMP must note that residually-impacted soils are present below the clean soil cover;

15. Develop a Soil Vapor Mitigation Plan to guide future building construction; and

16. Develop a Groundwater Monitoring Plan to document improving groundwater quality in response to remediation activities.

#### Box 4

##### Description of Engineering Controls

###### Parcel

###### Engineering Control

###### **39.34-1-8 (Portion of)**

###### Cover System

###### Engineering Controls (ECs)

Cover System – A site cover will be required to allow for restricted residential use of the site.

- the site cover consists either of structures such as buildings, pavement, and sidewalks comprising the site development, or appropriate clean soil cover of a minimum thickness of two feet must be maintained on the site;
- the Site Management Plan (SMP) must note that residually-impacted soils are present below the clean soil cover;
- Excavation below the clean soil layer entail requires: 1) 15 day prior notification to NYSDEC and NYSDOH, 2) notification to contractors of the potential hazard (contractor personnel may be subject to 29 CFR 1910.120 – HAZWOPER), and 3) restoration of the clean soil layer.
- Development of a Flood Hazard Mitigation Plan to comply with Chapter 157 – Flood Hazard Control of the City of Schenectady Code, as the ALCO site lies within FEMA mapped Zones A-16 and B;
- The Excavation Work Plan (EWP), in the SMP, outlines the procedures required to be implemented in the event the cover system is breached, penetrated or temporarily removed, and any underlying remaining impacted soil is disturbed. Procedures for the inspection of this cover are provided in the Monitoring and Sampling Plan included in the SMP. Any work conducted pursuant to the EWP must also be conducted in accordance with the procedures defined in a Health and Safety Plan and associated Community Air Monitoring Plan prepared for the site and provided in the SMP.

###### **39.34-1-9**

###### Cover System

###### Engineering Controls (ECs)

Cover System – A site cover will be required to allow for restricted residential use of the site.

- the site cover consists either of structures such as buildings, pavement, and sidewalks comprising the site development, or appropriate clean soil cover of a minimum thickness of two feet must be maintained on the site;
- the Site Management Plan (SMP) must note that residually-impacted soils are present below the clean soil cover;
- Excavation below the clean soil layer entail requires: 1) 15 day prior notification to NYSDEC and NYSDOH, 2) notification to contractors of the potential hazard (contractor personnel may be subject to 29 CFR 1910.120 – HAZWOPER), and 3) restoration of the clean soil layer.
- Development of a Flood Hazard Mitigation Plan to comply with Chapter 157 – Flood Hazard Control of the City of Schenectady Code, as the ALCO site lies within FEMA mapped Zones A-16 and B;
- The Excavation Work Plan (EWP), in the SMP, outlines the procedures required to be

#### Parcel

#### Engineering Control

implemented in the event the cover system is breached, penetrated or temporarily removed, and any underlying remaining impacted soil is disturbed. Procedures for the inspection of this cover are provided in the Monitoring and Sampling Plan included in the SMP. Any work conducted pursuant to the EWP must also be conducted in accordance with the procedures defined in a Health and Safety Plan and associated Community Air Monitoring Plan prepared for the site and provided in the SMP.

#### **39.41-1-10**

##### **Cover System**

##### Engineering Controls (ECs)

Cover System – A site cover will be required to allow for restricted residential use of the site.

- the site cover consists either of structures such as buildings, pavement, and sidewalks comprising the site development, or appropriate clean soil cover of a minimum thickness of two feet must be maintained on the site;
- the Site Management Plan (SMP) must note that residually-impacted soils are present below the clean soil cover;
- Excavation below the clean soil layer entail requires: 1) 15 day prior notification to NYSDEC and NYSDOH, 2) notification to contractors of the potential hazard (contractor personnel may be subject to 29 CFR 1910.120 – HAZWOPER), and 3) restoration of the clean soil layer.
- Development of a Flood Hazard Mitigation Plan to comply with Chapter 157 – Flood Hazard Control of the City of Schenectady Code, as the ALCO site lies within FEMA mapped Zones A-16 and B;
- The Excavation Work Plan (EWP), in the SMP, outlines the procedures required to be implemented in the event the cover system is breached, penetrated or temporarily removed, and any underlying remaining impacted soil is disturbed. Procedures for the inspection of this cover are provided in the Monitoring and Sampling Plan included in the SMP. Any work conducted pursuant to the EWP must also be conducted in accordance with the procedures defined in a Health and Safety Plan and associated Community Air Monitoring Plan prepared for the site and provided in the SMP.

#### **39.41-1-11**

##### **Cover System**

##### Engineering Controls (ECs)

Cover System – A site cover will be required to allow for restricted residential use of the site.

- the site cover consists either of structures such as buildings, pavement, and sidewalks comprising the site development, or appropriate clean soil cover of a minimum thickness of two feet must be maintained on the site;
- the Site Management Plan (SMP) must note that residually-impacted soils are present below the clean soil cover;
- Excavation below the clean soil layer entail requires: 1) 15 day prior notification to NYSDEC and NYSDOH, 2) notification to contractors of the potential hazard (contractor personnel may be subject to 29 CFR 1910.120 – HAZWOPER), and 3) restoration of the clean soil layer.
- Development of a Flood Hazard Mitigation Plan to comply with Chapter 157 – Flood Hazard Control of the City of Schenectady Code, as the ALCO site lies within FEMA mapped Zones A-16 and B;
- The Excavation Work Plan (EWP), in the SMP, outlines the procedures required to be implemented in the event the cover system is breached, penetrated or temporarily removed, and any underlying remaining impacted soil is disturbed. Procedures for the inspection of this cover are provided in the Monitoring and Sampling Plan included in the SMP. Any work conducted pursuant to the EWP must also be conducted in accordance with the procedures defined in a Health and Safety Plan and associated Community Air Monitoring Plan prepared for the site and provided in the SMP.

#### **39.41-1-12**

##### **Cover System**

##### Engineering Controls (ECs)

Cover System – A site cover will be required to allow for restricted residential use of the site.

- the site cover consists either of structures such as buildings, pavement, and sidewalks comprising the site development, or appropriate clean soil cover of a minimum thickness of two feet must be maintained on the site;
- the Site Management Plan (SMP) must note that residually-impacted soils are present below the clean soil cover;
- Excavation below the clean soil layer entail requires: 1) 15 day prior notification to NYSDEC and



Parcel

Engineering Control

NYSDOH, 2) notification to contractors of the potential hazard (contractor personnel may be subject to 29 CFR 1910.120 – HAZWOPER), and 3) restoration of the clean soil layer.

- Development of a Flood Hazard Mitigation Plan to comply with Chapter 157 – Flood Hazard Control of the City of Schenectady Code, as the ALCO site lies within FEMA mapped Zones A-16 and B;

- The Excavation Work Plan (EWP), in the SMP, outlines the procedures required to be implemented in the event the cover system is breached, penetrated or temporarily removed, and any underlying remaining impacted soil is disturbed. Procedures for the inspection of this cover are provided in the Monitoring and Sampling Plan included in the SMP. Any work conducted pursuant to the EWP must also be conducted in accordance with the procedures defined in a Health and Safety Plan and associated Community Air Monitoring Plan prepared for the site and provided in the SMP.

**39.41-1-13**

Cover System

Engineering Controls (ECs)

Cover System – A site cover will be required to allow for restricted residential use of the site.

- the site cover consists either of structures such as buildings, pavement, and sidewalks comprising the site development, or appropriate clean soil cover of a minimum thickness of two feet must be maintained on the site;
- the Site Management Plan (SMP) must note that residually-impacted soils are present below the clean soil cover;
- Excavation below the clean soil layer entail requires: 1) 15 day prior notification to NYSDEC and NYSDOH, 2) notification to contractors of the potential hazard (contractor personnel may be subject to 29 CFR 1910.120 – HAZWOPER), and 3) restoration of the clean soil layer.
- Development of a Flood Hazard Mitigation Plan to comply with Chapter 157 – Flood Hazard Control of the City of Schenectady Code, as the ALCO site lies within FEMA mapped Zones A-16 and B;
- The Excavation Work Plan (EWP), in the SMP, outlines the procedures required to be implemented in the event the cover system is breached, penetrated or temporarily removed, and any underlying remaining impacted soil is disturbed. Procedures for the inspection of this cover are provided in the Monitoring and Sampling Plan included in the SMP. Any work conducted pursuant to the EWP must also be conducted in accordance with the procedures defined in a Health and Safety Plan and associated Community Air Monitoring Plan prepared for the site and provided in the SMP.

**39.41-1-14**

Cover System

Engineering Controls (ECs)

Cover System – A site cover will be required to allow for restricted residential use of the site.

- the site cover consists either of structures such as buildings, pavement, and sidewalks comprising the site development, or appropriate clean soil cover of a minimum thickness of two feet must be maintained on the site;
- the Site Management Plan (SMP) must note that residually-impacted soils are present below the clean soil cover;
- Excavation below the clean soil layer entail requires: 1) 15 day prior notification to NYSDEC and NYSDOH, 2) notification to contractors of the potential hazard (contractor personnel may be subject to 29 CFR 1910.120 – HAZWOPER), and 3) restoration of the clean soil layer.
- Development of a Flood Hazard Mitigation Plan to comply with Chapter 157 – Flood Hazard Control of the City of Schenectady Code, as the ALCO site lies within FEMA mapped Zones A-16 and B;
- The Excavation Work Plan (EWP), in the SMP, outlines the procedures required to be implemented in the event the cover system is breached, penetrated or temporarily removed, and any underlying remaining impacted soil is disturbed. Procedures for the inspection of this cover are provided in the Monitoring and Sampling Plan included in the SMP. Any work conducted pursuant to the EWP must also be conducted in accordance with the procedures defined in a Health and Safety Plan and associated Community Air Monitoring Plan prepared for the site and provided in the SMP.

**39.41-1-15**

Cover System

Engineering Controls (ECs)

Cover System – A site cover will be required to allow for restricted residential use of the site.

Parcel

Engineering Control

- the site cover consists either of structures such as buildings, pavement, and sidewalks comprising the site development, or appropriate clean soil cover of a minimum thickness of two feet must be maintained on the site;
- the Site Management Plan (SMP) must note that residually-impacted soils are present below the clean soil cover;
- Excavation below the clean soil layer entail requires: 1) 15 day prior notification to NYSDEC and NYSDOH, 2) notification to contractors of the potential hazard (contractor personnel may be subject to 29 CFR 1910.120 – HAZWOPER), and 3) restoration of the clean soil layer.
- Development of a Flood Hazard Mitigation Plan to comply with Chapter 157 – Flood Hazard Control of the City of Schenectady Code, as the ALCO site lies within FEMA mapped Zones A-16 and B;
- The Excavation Work Plan (EWP), in the SMP, outlines the procedures required to be implemented in the event the cover system is breached, penetrated or temporarily removed, and any underlying remaining impacted soil is disturbed. Procedures for the inspection of this cover are provided in the Monitoring and Sampling Plan included in the SMP. Any work conducted pursuant to the EWP must also be conducted in accordance with the procedures defined in a Health and Safety Plan and associated Community Air Monitoring Plan prepared for the site and provided in the SMP.

**39.41-1-16**

Cover System

Engineering Controls (ECs)

Cover System – A site cover will be required to allow for restricted residential use of the site.

- the site cover consists either of structures such as buildings, pavement, and sidewalks comprising the site development, or appropriate clean soil cover of a minimum thickness of two feet must be maintained on the site;
- the Site Management Plan (SMP) must note that residually-impacted soils are present below the clean soil cover;
- Excavation below the clean soil layer entail requires: 1) 15 day prior notification to NYSDEC and NYSDOH, 2) notification to contractors of the potential hazard (contractor personnel may be subject to 29 CFR 1910.120 – HAZWOPER), and 3) restoration of the clean soil layer.
- Development of a Flood Hazard Mitigation Plan to comply with Chapter 157 – Flood Hazard Control of the City of Schenectady Code, as the ALCO site lies within FEMA mapped Zones A-16 and B;
- The Excavation Work Plan (EWP), in the SMP, outlines the procedures required to be implemented in the event the cover system is breached, penetrated or temporarily removed, and any underlying remaining impacted soil is disturbed. Procedures for the inspection of this cover are provided in the Monitoring and Sampling Plan included in the SMP. Any work conducted pursuant to the EWP must also be conducted in accordance with the procedures defined in a Health and Safety Plan and associated Community Air Monitoring Plan prepared for the site and provided in the SMP.

**39.41-1-17**

Cover System

Engineering Controls (ECs)

Cover System – A site cover will be required to allow for restricted residential use of the site.

- the site cover consists either of structures such as buildings, pavement, and sidewalks comprising the site development, or appropriate clean soil cover of a minimum thickness of two feet must be maintained on the site;
- the Site Management Plan (SMP) must note that residually-impacted soils are present below the clean soil cover;
- Excavation below the clean soil layer entail requires: 1) 15 day prior notification to NYSDEC and NYSDOH, 2) notification to contractors of the potential hazard (contractor personnel may be subject to 29 CFR 1910.120 – HAZWOPER), and 3) restoration of the clean soil layer.
- Development of a Flood Hazard Mitigation Plan to comply with Chapter 157 – Flood Hazard Control of the City of Schenectady Code, as the ALCO site lies within FEMA mapped Zones A-16 and B;
- The Excavation Work Plan (EWP), in the SMP, outlines the procedures required to be implemented in the event the cover system is breached, penetrated or temporarily removed, and any underlying remaining impacted soil is disturbed. Procedures for the inspection of this cover are provided in the Monitoring and Sampling Plan included in the SMP. Any work conducted pursuant to

Parcel

Engineering Control

the EWP must also be conducted in accordance with the procedures defined in a Health and Safety Plan and associated Community Air Monitoring Plan prepared for the site and provided in the SMP.

**39.41-1-18**

Cover System

Engineering Controls (ECs)

Cover System – A site cover will be required to allow for restricted residential use of the site.

- the site cover consists either of structures such as buildings, pavement, and sidewalks comprising the site development, or appropriate clean soil cover of a minimum thickness of two feet must be maintained on the site;
- the Site Management Plan (SMP) must note that residually-impacted soils are present below the clean soil cover;
- Excavation below the clean soil layer entail requires: 1) 15 day prior notification to NYSDEC and NYSDOH, 2) notification to contractors of the potential hazard (contractor personnel may be subject to 29 CFR 1910.120 – HAZWOPER), and 3) restoration of the clean soil layer.
- Development of a Flood Hazard Mitigation Plan to comply with Chapter 157 – Flood Hazard Control of the City of Schenectady Code, as the ALCO site lies within FEMA mapped Zones A-16 and B;
- The Excavation Work Plan (EWP), in the SMP, outlines the procedures required to be implemented in the event the cover system is breached, penetrated or temporarily removed, and any underlying remaining impacted soil is disturbed. Procedures for the inspection of this cover are provided in the Monitoring and Sampling Plan included in the SMP. Any work conducted pursuant to the EWP must also be conducted in accordance with the procedures defined in a Health and Safety Plan and associated Community Air Monitoring Plan prepared for the site and provided in the SMP.

**39.41-1-19**

Cover System

Engineering Controls (ECs)

Cover System – A site cover will be required to allow for restricted residential use of the site.

- the site cover consists either of structures such as buildings, pavement, and sidewalks comprising the site development, or appropriate clean soil cover of a minimum thickness of two feet must be maintained on the site;
- the Site Management Plan (SMP) must note that residually-impacted soils are present below the clean soil cover;
- Excavation below the clean soil layer entail requires: 1) 15 day prior notification to NYSDEC and NYSDOH, 2) notification to contractors of the potential hazard (contractor personnel may be subject to 29 CFR 1910.120 – HAZWOPER), and 3) restoration of the clean soil layer.
- Development of a Flood Hazard Mitigation Plan to comply with Chapter 157 – Flood Hazard Control of the City of Schenectady Code, as the ALCO site lies within FEMA mapped Zones A-16 and B;
- The Excavation Work Plan (EWP), in the SMP, outlines the procedures required to be implemented in the event the cover system is breached, penetrated or temporarily removed, and any underlying remaining impacted soil is disturbed. Procedures for the inspection of this cover are provided in the Monitoring and Sampling Plan included in the SMP. Any work conducted pursuant to the EWP must also be conducted in accordance with the procedures defined in a Health and Safety Plan and associated Community Air Monitoring Plan prepared for the site and provided in the SMP.

**39.41-1-20**

Cover System

Engineering Controls (ECs)

Cover System – A site cover will be required to allow for restricted residential use of the site.

- the site cover consists either of structures such as buildings, pavement, and sidewalks comprising the site development, or appropriate clean soil cover of a minimum thickness of two feet must be maintained on the site;
- the Site Management Plan (SMP) must note that residually-impacted soils are present below the clean soil cover;
- Excavation below the clean soil layer entail requires: 1) 15 day prior notification to NYSDEC and NYSDOH, 2) notification to contractors of the potential hazard (contractor personnel may be subject to 29 CFR 1910.120 – HAZWOPER), and 3) restoration of the clean soil layer.
- Development of a Flood Hazard Mitigation Plan to comply with Chapter 157 – Flood Hazard

Parcel

Engineering Control

Control of the City of Schenectady Code, as the ALCO site lies within FEMA mapped Zones A-16 and B;

- The Excavation Work Plan (EWP), in the SMP, outlines the procedures required to be implemented in the event the cover system is breached, penetrated or temporarily removed, and any underlying remaining impacted soil is disturbed. Procedures for the inspection of this cover are provided in the Monitoring and Sampling Plan included in the SMP. Any work conducted pursuant to the EWP must also be conducted in accordance with the procedures defined in a Health and Safety Plan and associated Community Air Monitoring Plan prepared for the site and provided in the SMP.

**39.41-1-21**

Cover System

Engineering Controls (ECs)

Cover System – A site cover will be required to allow for restricted residential use of the site.

- the site cover consists either of structures such as buildings, pavement, and sidewalks comprising the site development, or appropriate clean soil cover of a minimum thickness of two feet must be maintained on the site;
- the Site Management Plan (SMP) must note that residually-impacted soils are present below the clean soil cover;
- Excavation below the clean soil layer entail requires: 1) 15 day prior notification to NYSDEC and NYSDOH, 2) notification to contractors of the potential hazard (contractor personnel may be subject to 29 CFR 1910.120 – HAZWOPER), and 3) restoration of the clean soil layer.

Development of a Flood Hazard Mitigation Plan to comply with Chapter 157 – Flood Hazard Control of the City of Schenectady Code, as the ALCO site lies within FEMA mapped Zones A-16 and B;

- The Excavation Work Plan (EWP), in the SMP, outlines the procedures required to be implemented in the event the cover system is breached, penetrated or temporarily removed, and any underlying remaining impacted soil is disturbed. Procedures for the inspection of this cover are provided in the Monitoring and Sampling Plan included in the SMP. Any work conducted pursuant to the EWP must also be conducted in accordance with the procedures defined in a Health and Safety Plan and associated Community Air Monitoring Plan prepared for the site and provided in the SMP.

**39.41-1-22**

Cover System

Engineering Controls (ECs)

Cover System – A site cover will be required to allow for restricted residential use of the site.

- the site cover consists either of structures such as buildings, pavement, and sidewalks comprising the site development, or appropriate clean soil cover of a minimum thickness of two feet must be maintained on the site;
- the Site Management Plan (SMP) must note that residually-impacted soils are present below the clean soil cover;
- Excavation below the clean soil layer entail requires: 1) 15 day prior notification to NYSDEC and NYSDOH, 2) notification to contractors of the potential hazard (contractor personnel may be subject to 29 CFR 1910.120 – HAZWOPER), and 3) restoration of the clean soil layer.

Development of a Flood Hazard Mitigation Plan to comply with Chapter 157 – Flood Hazard Control of the City of Schenectady Code, as the ALCO site lies within FEMA mapped Zones A-16 and B;

- The Excavation Work Plan (EWP), in the SMP, outlines the procedures required to be implemented in the event the cover system is breached, penetrated or temporarily removed, and any underlying remaining impacted soil is disturbed. Procedures for the inspection of this cover are provided in the Monitoring and Sampling Plan included in the SMP. Any work conducted pursuant to the EWP must also be conducted in accordance with the procedures defined in a Health and Safety Plan and associated Community Air Monitoring Plan prepared for the site and provided in the SMP.

**39.41-1-23**

Cover System

Engineering Controls (ECs)

Cover System – A site cover will be required to allow for restricted residential use of the site.

- the site cover consists either of structures such as buildings, pavement, and sidewalks comprising the site development, or appropriate clean soil cover of a minimum thickness of two feet must be maintained on the site;

#### Parcel

#### Engineering Control

- the Site Management Plan (SMP) must note that residually-impacted soils are present below the clean soil cover;
- Excavation below the clean soil layer entail requires: 1) 15 day prior notification to NYSDEC and NYSDOH, 2) notification to contractors of the potential hazard (contractor personnel may be subject to 29 CFR 1910.120 – HAZWOPER), and 3) restoration of the clean soil layer.
- Development of a Flood Hazard Mitigation Plan to comply with Chapter 157 – Flood Hazard Control of the City of Schenectady Code, as the ALCO site lies within FEMA mapped Zones A-16 and B;
- The Excavation Work Plan (EWP), in the SMP, outlines the procedures required to be implemented in the event the cover system is breached, penetrated or temporarily removed, and any underlying remaining impacted soil is disturbed. Procedures for the inspection of this cover are provided in the Monitoring and Sampling Plan included in the SMP. Any work conducted pursuant to the EWP must also be conducted in accordance with the procedures defined in a Health and Safety Plan and associated Community Air Monitoring Plan prepared for the site and provided in the SMP.

#### **39.41-1-24**

#### Cover System

##### Engineering Controls (ECs)

Cover System – A site cover will be required to allow for restricted residential use of the site.

- the site cover consists either of structures such as buildings, pavement, and sidewalks comprising the site development, or appropriate clean soil cover of a minimum thickness of two feet must be maintained on the site;
- the Site Management Plan (SMP) must note that residually-impacted soils are present below the clean soil cover;
- Excavation below the clean soil layer entail requires: 1) 15 day prior notification to NYSDEC and NYSDOH, 2) notification to contractors of the potential hazard (contractor personnel may be subject to 29 CFR 1910.120 – HAZWOPER), and 3) restoration of the clean soil layer.
- Development of a Flood Hazard Mitigation Plan to comply with Chapter 157 – Flood Hazard Control of the City of Schenectady Code, as the ALCO site lies within FEMA mapped Zones A-16 and B;
- The Excavation Work Plan (EWP), in the SMP, outlines the procedures required to be implemented in the event the cover system is breached, penetrated or temporarily removed, and any underlying remaining impacted soil is disturbed. Procedures for the inspection of this cover are provided in the Monitoring and Sampling Plan included in the SMP. Any work conducted pursuant to the EWP must also be conducted in accordance with the procedures defined in a Health and Safety Plan and associated Community Air Monitoring Plan prepared for the site and provided in the SMP.

#### **39.41-1-4 (Portion of)**

#### Cover System

##### Engineering Controls (ECs)

Cover System – A site cover will be required to allow for restricted residential use of the site.

- the site cover consists either of structures such as buildings, pavement, and sidewalks comprising the site development, or appropriate clean soil cover of a minimum thickness of two feet must be maintained on the site;
- the Site Management Plan (SMP) must note that residually-impacted soils are present below the clean soil cover;
- Excavation below the clean soil layer entail requires: 1) 15 day prior notification to NYSDEC and NYSDOH, 2) notification to contractors of the potential hazard (contractor personnel may be subject to 29 CFR 1910.120 – HAZWOPER), and 3) restoration of the clean soil layer.
- Development of a Flood Hazard Mitigation Plan to comply with Chapter 157 – Flood Hazard Control of the City of Schenectady Code, as the ALCO site lies within FEMA mapped Zones A-16 and B;
- The Excavation Work Plan (EWP), in the SMP, outlines the procedures required to be implemented in the event the cover system is breached, penetrated or temporarily removed, and any underlying remaining impacted soil is disturbed. Procedures for the inspection of this cover are provided in the Monitoring and Sampling Plan included in the SMP. Any work conducted pursuant to the EWP must also be conducted in accordance with the procedures defined in a Health and Safety Plan and associated Community Air Monitoring Plan prepared for the site and provided in the SMP.

#### **39.41-1-5 (Portion of)**

Parcel

Engineering Control

Cover System

Engineering Controls (ECs)

Cover System – A site cover will be required to allow for restricted residential use of the site.

- the site cover consists either of structures such as buildings, pavement, and sidewalks comprising the site development, or appropriate clean soil cover of a minimum thickness of two feet must be maintained on the site;
- the Site Management Plan (SMP) must note that residually-impacted soils are present below the clean soil cover;
- Excavation below the clean soil layer entail requires: 1) 15 day prior notification to NYSDEC and NYSDOH, 2) notification to contractors of the potential hazard (contractor personnel may be subject to 29 CFR 1910.120 – HAZWOPER), and 3) restoration of the clean soil layer.
- Development of a Flood Hazard Mitigation Plan to comply with Chapter 157 – Flood Hazard Control of the City of Schenectady Code, as the ALCO site lies within FEMA mapped Zones A-16 and B;
- The Excavation Work Plan (EWP), in the SMP, outlines the procedures required to be implemented in the event the cover system is breached, penetrated or temporarily removed, and any underlying remaining impacted soil is disturbed. Procedures for the inspection of this cover are provided in the Monitoring and Sampling Plan included in the SMP. Any work conducted pursuant to the EWP must also be conducted in accordance with the procedures defined in a Health and Safety Plan and associated Community Air Monitoring Plan prepared for the site and provided in the SMP.

**39.41-1-6 (Portion of)**

Cover System

Engineering Controls (ECs)

Cover System – A site cover will be required to allow for restricted residential use of the site.

- the site cover consists either of structures such as buildings, pavement, and sidewalks comprising the site development, or appropriate clean soil cover of a minimum thickness of two feet must be maintained on the site;
- the Site Management Plan (SMP) must note that residually-impacted soils are present below the clean soil cover;
- Excavation below the clean soil layer entail requires: 1) 15 day prior notification to NYSDEC and NYSDOH, 2) notification to contractors of the potential hazard (contractor personnel may be subject to 29 CFR 1910.120 – HAZWOPER), and 3) restoration of the clean soil layer.
- Development of a Flood Hazard Mitigation Plan to comply with Chapter 157 – Flood Hazard Control of the City of Schenectady Code, as the ALCO site lies within FEMA mapped Zones A-16 and B;
- The Excavation Work Plan (EWP), in the SMP, outlines the procedures required to be implemented in the event the cover system is breached, penetrated or temporarily removed, and any underlying remaining impacted soil is disturbed. Procedures for the inspection of this cover are provided in the Monitoring and Sampling Plan included in the SMP. Any work conducted pursuant to the EWP must also be conducted in accordance with the procedures defined in a Health and Safety Plan and associated Community Air Monitoring Plan prepared for the site and provided in the SMP.

**39.41-1-7**

Cover System

Engineering Controls (ECs)

Cover System – A site cover will be required to allow for restricted residential use of the site.

- the site cover consists either of structures such as buildings, pavement, and sidewalks comprising the site development, or appropriate clean soil cover of a minimum thickness of two feet must be maintained on the site;
- the Site Management Plan (SMP) must note that residually-impacted soils are present below the clean soil cover;
- Excavation below the clean soil layer entail requires: 1) 15 day prior notification to NYSDEC and NYSDOH, 2) notification to contractors of the potential hazard (contractor personnel may be subject to 29 CFR 1910.120 – HAZWOPER), and 3) restoration of the clean soil layer.
- Development of a Flood Hazard Mitigation Plan to comply with Chapter 157 – Flood Hazard Control of the City of Schenectady Code, as the ALCO site lies within FEMA mapped Zones A-16 and B;

#### Parcel

#### Engineering Control

- The Excavation Work Plan (EWP), in the SMP, outlines the procedures required to be implemented in the event the cover system is breached, penetrated or temporarily removed, and any underlying remaining impacted soil is disturbed. Procedures for the inspection of this cover are provided in the Monitoring and Sampling Plan included in the SMP. Any work conducted pursuant to the EWP must also be conducted in accordance with the procedures defined in a Health and Safety Plan and associated Community Air Monitoring Plan prepared for the site and provided in the SMP.

#### **39.41-1-9**

#### Cover System

#### Engineering Controls (ECs)

Cover System – A site cover will be required to allow for restricted residential use of the site.

- the site cover consists either of structures such as buildings, pavement, and sidewalks comprising the site development, or appropriate clean soil cover of a minimum thickness of two feet must be maintained on the site;
- the Site Management Plan (SMP) must note that residually-impacted soils are present below the clean soil cover;
- Excavation below the clean soil layer entail requires: 1) 15 day prior notification to NYSDEC and NYSDOH, 2) notification to contractors of the potential hazard (contractor personnel may be subject to 29 CFR 1910.120 – HAZWOPER), and 3) restoration of the clean soil layer.
- Development of a Flood Hazard Mitigation Plan to comply with Chapter 157 – Flood Hazard Control of the City of Schenectady Code, as the ALCO site lies within FEMA mapped Zones A-16 and B;
- The Excavation Work Plan (EWP), in the SMP, outlines the procedures required to be implemented in the event the cover system is breached, penetrated or temporarily removed, and any underlying remaining impacted soil is disturbed. Procedures for the inspection of this cover are provided in the Monitoring and Sampling Plan included in the SMP. Any work conducted pursuant to the EWP must also be conducted in accordance with the procedures defined in a Health and Safety Plan and associated Community Air Monitoring Plan prepared for the site and provided in the SMP.

#### **39.49-2-1.7 (Portion of)**

#### Cover System

#### Engineering Controls (ECs)

Cover System – A site cover will be required to allow for restricted residential use of the site.

- the site cover consists either of structures such as buildings, pavement, and sidewalks comprising the site development, or appropriate clean soil cover of a minimum thickness of two feet must be maintained on the site;
- the Site Management Plan (SMP) must note that residually-impacted soils are present below the clean soil cover;
- Excavation below the clean soil layer entail requires: 1) 15 day prior notification to NYSDEC and NYSDOH, 2) notification to contractors of the potential hazard (contractor personnel may be subject to 29 CFR 1910.120 – HAZWOPER), and 3) restoration of the clean soil layer.
- Development of a Flood Hazard Mitigation Plan to comply with Chapter 157 – Flood Hazard Control of the City of Schenectady Code, as the ALCO site lies within FEMA mapped Zones A-16 and B;
- The Excavation Work Plan (EWP), in the SMP, outlines the procedures required to be implemented in the event the cover system is breached, penetrated or temporarily removed, and any underlying remaining impacted soil is disturbed. Procedures for the inspection of this cover are provided in the Monitoring and Sampling Plan included in the SMP. Any work conducted pursuant to the EWP must also be conducted in accordance with the procedures defined in a Health and Safety Plan and associated Community Air Monitoring Plan prepared for the site and provided in the SMP.

**Periodic Review Report (PRR) Certification Statements**

1. I certify by checking "YES" below that:

a) the Periodic Review report and all attachments were prepared under the direction of, and reviewed by, the party making the Engineering Control certification;

b) to the best of my knowledge and belief, the work and conclusions described in this certification are in accordance with the requirements of the site remedial program, and generally accepted engineering practices; and the information presented is accurate and complete.

YES NO

☒

☐

2. For each Engineering control listed in Box 4, I certify by checking "YES" below that all of the following statements are true:

(a) The Engineering Control(s) employed at this site is unchanged since the date that the Control was put in-place, or was last approved by the Department;

(b) nothing has occurred that would impair the ability of such Control, to protect public health and the environment;

(c) access to the site will continue to be provided to the Department, to evaluate the remedy, including access to evaluate the continued maintenance of this Control;

(d) nothing has occurred that would constitute a violation or failure to comply with the Site Management Plan for this Control; and

(e) if a financial assurance mechanism is required by the oversight document for the site, the mechanism remains valid and sufficient for its intended purpose established in the document.

YES NO

☒

☐

**IF THE ANSWER TO QUESTION 2 IS NO, sign and date below and  
DO NOT COMPLETE THE REST OF THIS FORM. Otherwise continue.**

**A Corrective Measures Work Plan must be submitted along with this form to address these issues.**

\_\_\_\_\_  
Signature of Owner, Remedial Party or Designated Representative

\_\_\_\_\_  
Date



**IC CERTIFICATIONS  
SITE NO. C447042**

**Box 6**

**SITE OWNER OR DESIGNATED REPRESENTATIVE SIGNATURE**

I certify that all information and statements in Boxes 1,2, and 3 are true. I understand that a false statement made herein is punishable as a Class "A" misdemeanor, pursuant to Section 210.45 of the Penal Law.

I Bryce D. Dingman at 10 Airline Drive, Albany NY 12205,  
print name print business address

am certifying as Designated Representative for Owner (Owner or Remedial Party)

for the Site named in the Site Details Section of this form.



\_\_\_\_\_  
Signature of Owner, Remedial Party, or Designated Representative  
Rendering Certification

5/09/2023

\_\_\_\_\_  
Date

## EC CERTIFICATIONS

**Box 7**

### Professional Engineer Signature

I certify that all information in Boxes 4 and 5 are true. I understand that a false statement made herein is punishable as a Class "A" misdemeanor, pursuant to Section 210.45 of the Penal Law.

I Scott D. Nostrand at 10 Airline Drive, Albany NY 12205,  
print name print business address

am certifying as a Professional Engineer for the Owner  
(Owner or Remedial Party)



Scott D. Nostrand  
Signature of Professional Engineer, for the Owner or  
Remedial Party, Rendering Certification


Stamp  
(Required for PE)

5/09/2023  
Date

## **Appendix B**

### **Site Annual Inspection Form**

**SITE MANAGEMENT PLAN  
ANNUAL SITE-WIDE INSPECTION**

<b>Site Name:</b> Former ALCO Site - Parcel A	<b>Date:</b> March 30, 2023
<b>Site No.:</b> C447042	<b>Inspected By:</b> RJF
<b>Site Address:</b> Harborside Drive, Schenectady NY	<b>Inspector's Signature:</b> 
<b>Owner:</b> Maxon ALCO Holdings, LLC	<b>Inspector's Address:</b> 10 Airline Drive
<b>Owner Address:</b> 220 Harborside Drive, Suite 300, Schenectady, NY 12305	Albany, NY 12205

Site Management Plan (SMP) Compliance	YES	NO	N/A	COMMENTS
Has some or all of the site property been sold, subdivided, merged, or undergone a tax map amendment during this Reporting Period?		✓		
Has the Environmental Easement been upheld?	✓			
Have site-use restrictions been upheld (restricted-residential)?	✓			
Has the groundwater use restriction been upheld?	✓			
Has all intrusive work been conducted in accordance with the SMP?	✓			
Was the Excavation Work Plan followed?	✓			
Was the Community Air Monitoring Plan followed?	✓			
Are all records related to the site maintained and up-to-date?	✓			
Has the soil cap been maintained?	✓			
Document the general site conditions, including any evidence of soil erosion, ponding, and settlement in the soil soil cover, at the time of the site inspection:	<p>All site cover remains in the same acceptable condition since 2018.</p> <p>The site has remained in accordance with the SMP.</p>			

## **Appendix C**

### **Cover System Photos**



Photo 1. Parcel A looking east/northeast toward RPI building.



Photo 2. Parcel A looking east toward the apartment building.





Photo 3. Parcel A looking north toward Mohawk River.



Photo 4. Parcel A looking north/northwest toward Landings Hotel/Mohawk River.





Photo 5. Parcel A looking northwest toward Landings Hotel.



Photo 6. Parcel A looking south towards STS Steel.



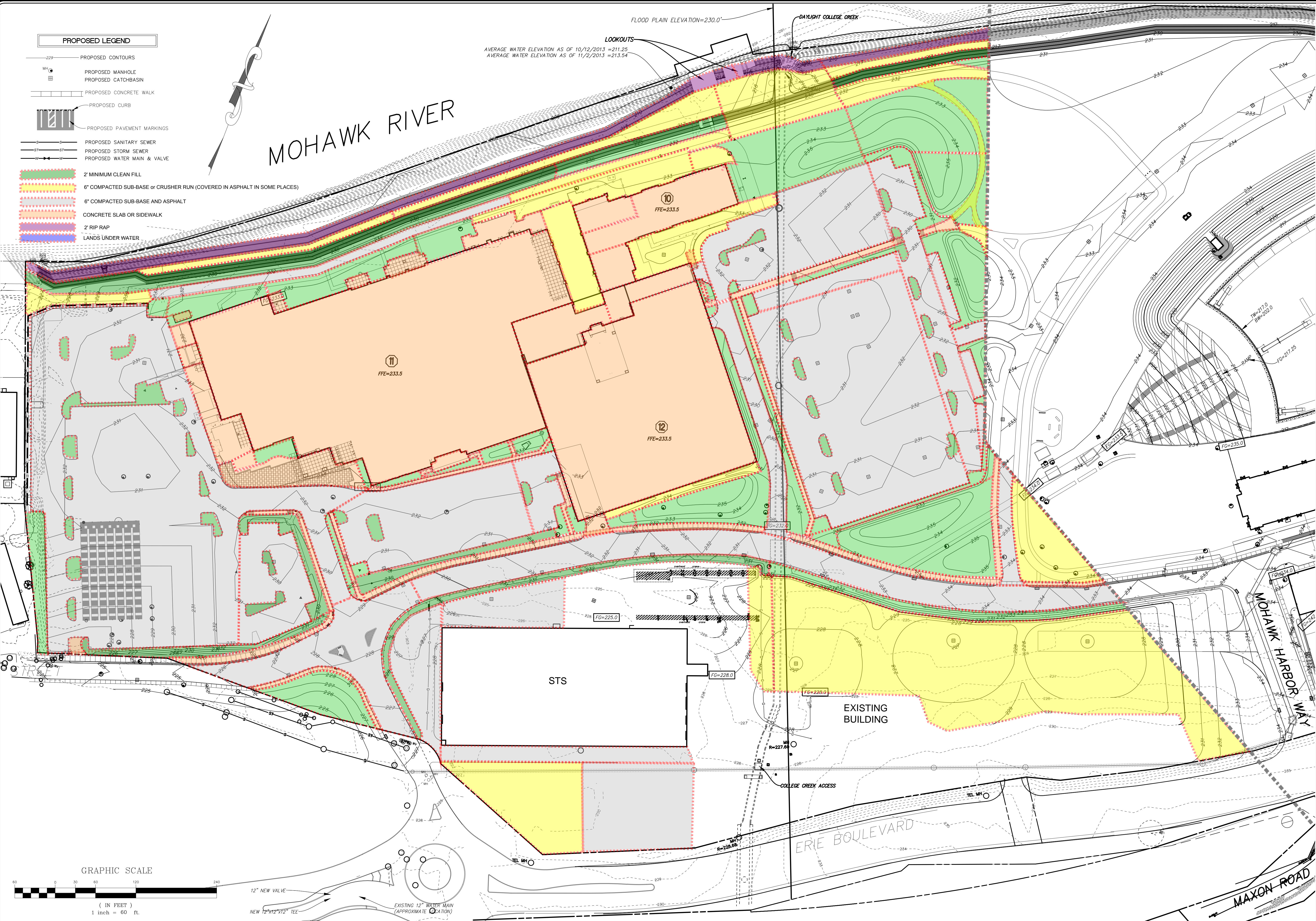


Photo 7. Parcel A looking south, Rivers Casino staff/patron parking lot.

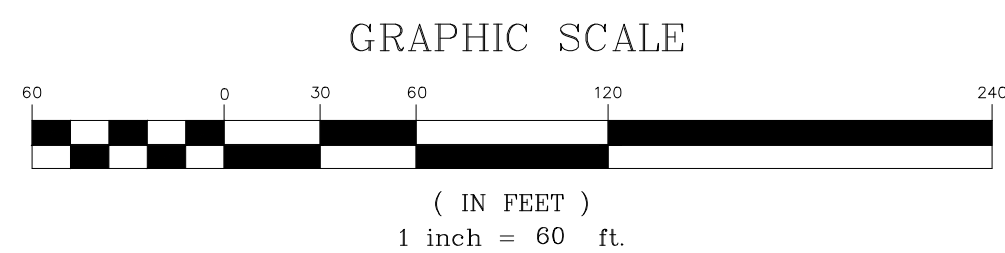
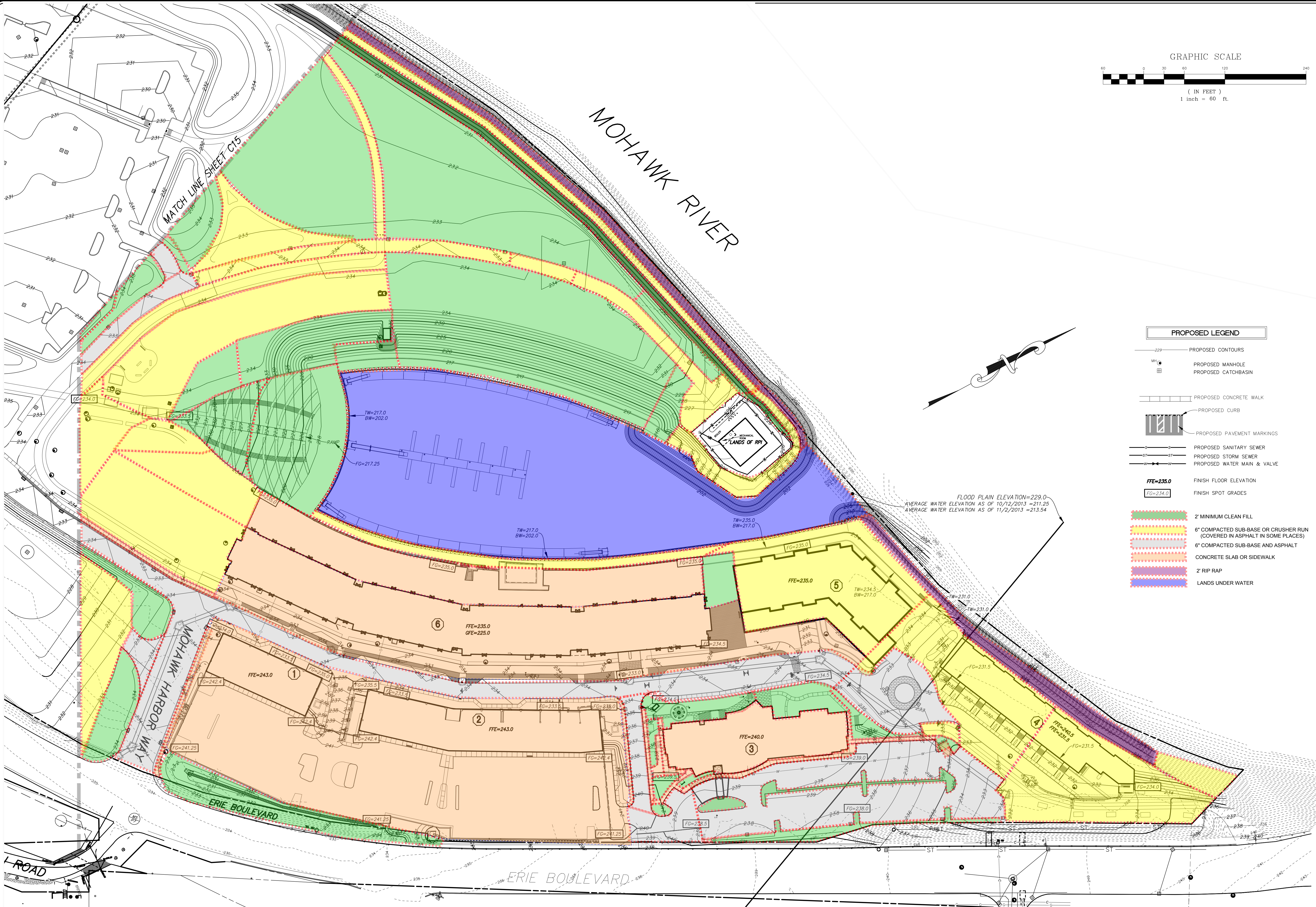
## **Appendix D**

### **Cover Map**





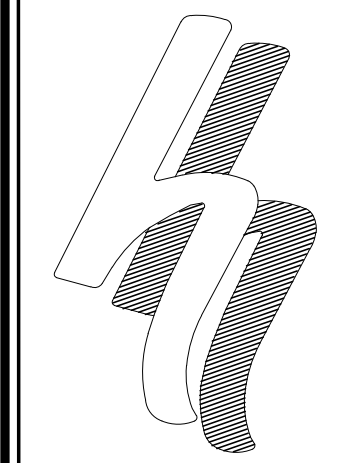




PROPOSED LEGEND

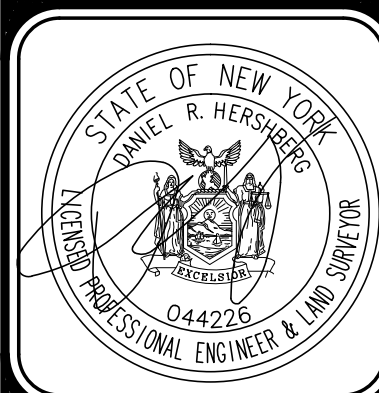
- PROPOSED CONTOURS
- PROPOSED MANHOLE
- PROPOSED CATCHBASIN
- PROPOSED CONCRETE WALK
- PROPOSED CURB
- PROPOSED PAVEMENT MARKINGS
- PROPOSED SANITARY SEWER
- PROPOSED STORM SEWER
- PROPOSED WATER MAIN & VALVE
- FINISH FLOOR ELEVATION
- FINISH SPOT GRADES

- 2' MINIMUM CLEAN FILL
- 6" COMPACTED SUB-BASE OR CRUSHER RUN (COVERED IN ASPHALT IN SOME PLACES)
- 6" COMPACTED SUB-BASE AND ASPHALT
- CONCRETE SLAB OR SIDEWALK
- 2' RIP RAP
- LANDS UNDER WATER



HERSHBERG & HERSHBERG  
Consulting Engineers and Land Surveyors  
18 Locust Street  
Albany, New York 12203

ALTERATION OF THIS DOCUMENT EXCEPT BY A LICENSED PROFESSIONAL ENGINEER OR LAND SURVEYOR IS ILLEGAL



DATE	
REMARKS	
REVISIONS	

FINISH GRADE PLAN 2  
ALCO REDEVELOPMENT SITE  
SCHENECTADY, NEW YORK



2017 Fill Quantities - RJ Valente to Rifenburg Contracting Corp.

BEGIN DATE	1/1/17	CUSTOMER	121
END DATE	12/31/17	ORDER	15
SELL/BUY/TRA	ALL		
SHIP/RECEIVE	ALL		

<u>PRODUCT</u>	<u>Description</u>	<u>Tickets</u>	<u>Qty</u>	<u>Unit</u>	<u>TicketType</u>
110	ROB SAND	490	9,528.00	CUBIC YAR	S
320	#2 STONE	1	42.10	TON	S
330	#3 STONE	35	1,608.71	TON	S
350	CRUSHER RUN	209	6,957.66	TON	S
372	620.04 MEDIUM STONE	37	675.41	TON	S
412	SCREENED TOPSOIL	160	1,500.00	CUBIC YAR	S
		932.00	20,311.88		

## **Appendix E**

### **SVI Assessment Results**



April 24, 2022

Mr. Joshua Haugh  
Project Manager  
New York State Department of Environmental Conservation  
Region 4  
1130 South Westcott Road  
Schenectady, New York 12306-2014

*VIA ELECTRONIC MAIL*

Re: Casino Building and Landing Hotel Sub-Slab Air Pressure Differential  
Confirmatory Measurement - Report  
ALCO – BCP Sites C447042, and C447043  
Schenectady, NY

File: 1368.001.007

Dear Mr. Haugh:

On behalf of Maxon ALCO Holdings, LLC, Barton & Loguidice, D.P.C. (B&L) has prepared the following letter to summarize the results of pressure measurements collected in accordance with the Casino Building and Sub-Slab Air Pressure Differential Confirmatory Measurement Work Plan submittal letter dated March 9, supplemental letter dated April 4, 2017, and the B&L email provided April 7, 2017 as approved by the New York State Department of Environmental Conservation (NYSDEC) approval letter dated April 11, 2017. Agreed upon locations for measurement collections are highlighted in the attached figure.

The pressure differential confirmatory measurements were collected on December 14, 2022 by B&L staff utilizing a Dwyer 477AV-1 Digital Manometer. At the time of the sampling event, the outside ambient temperature was 30 degrees Fahrenheit. Each proposed location was provided access by casino staff to collect the confirmatory measurements. B&L staff calibrated the meter at each location with the reference and signal ports open to the building air and then connected the signal port of the manometer to each 1/4" stainless steel sampling tube with polyethylene tubing. With the meter connected in this manner a lower pressure in the sub-slab test area is indicated by negative readings. The readings were predominantly in the negative range and the average values (units are inches of water column) were as follows:

SSVP-1:	-0.012"
SSVP-8:	0.000"
SSVP-9:	0.000"
SSVP-12:	0.000"
SSVP-15:	Signal port inaccessible (stripped fastening screws)
SVPP-18:	0.000"



The results for the Landings Hotel are as follows:

Location 1:	-0.037"
Location 2:	0.000"
Location 4:	0.000"
Location 5:	0.000"

In July 2017, it was established that Location 3 was not installed when B&L and Rifenburg staff attempted locating the port.

The results of the confirmatory measurements at each of the accessible points in the sub slab area confirmed two readings below the pressure within the building interior, one located within the casino portion and one within the hotel portion. Signal port SVPP-15, located in one of the casino's utility rooms was inaccessible due to faulty fastening screws. Seven measurements were found to be equalized, and no measurements were found positive.

In summary, the confirmatory measurements establish that maintaining the building HVAC under positive pressure is currently in the desired net positive pressure differential between the building interior and the subslab within both the casino and hotel structures. Documentation from the Rivers Casino and Landings Hotel mechanical technician, BPI, provided confirmation that the HVAC system is operating efficiently (see Attachment).

Please feel free to contact the undersigned at (518) 300-0770 with any questions or need for additional information.

Very truly yours,  
BARTON & LOGUIDICE, INC.

Bryce D. Dingman, P.G.  
Associate

Enclosure

cc: Tom Owens, Esq. - Maxon ALCO Holdings LLC

Dean Sommer, Esq. - Young Sommer





95 Hudson River Rd.  
Waterford, NY 12188  
(518) 326-8450 Ph. (518) 326-8435 Fax

3/28/23

Rivers Casino  
Rush St  
Schenectady, NY

**Re: HVAC**

Dear Chrystal,

Regarding the building HVAC for the casino and the hotel, all equipment is running properly, has service and maintenance performed on a regular basis, is running efficiently and is capable of continued building occupancy.

I trust you will find this meets your requirements and standards. It is our company's goal to meet your needs and provide you with the best possible service. If you should have any questions or require additional information on the above, please do not hesitate to contact us.

Respectfully,  
Daniel A. Keating  
BPI Mechanical Service, Inc.

## **Appendix F**

### **Spill 1604483 Weekly Inspection Reports**

**ALCO DAILY MONITORING LOG**

1	2	3	4	5	6	7	8	9	10	11	12	13	14	15	16	17	18	19	20	21	22	23	24	25	26	27	28								
GENERAL				ALCO PARCEL A																								ALCO PARCEL B				ALCO PARCEL C			
				Blowers and Aerators		Riverbank booms						MW-73		Other		Harbor								DS-1		Other		Any work activity? (injections, groundwater monitoring, construction, etc.)		If yes to column 24, describe the activities performed in Parcel C					
Date	Time	Weather (note precip)	Inspector initials	Freeman's Bridge staff gauge	Blowers and aerators effective?	If no to column 5, describe actions taken to correct	Containment boom effective?	Absorbent boom effective?	Is sheen, if present, fully contained in boom?	Is boomed area free of debris?	If no to columns 7-10, describe actions taken to correct	Depth to NAP	Depth to GW	General observations (e.g., odors) or follow-up needed	Harbor booms/sweeps secure and in good condition?	Sheen, if present, fully contained in absorbents?	Are boomed areas free of debris?	If no to columns 15-17, describe actions taken to correct	Did absorbent socks in baffles need changed out?	Condition of eastern Harbor wall (e.g., staining on sweeps)	Product level in RW-3	Condition of additional wells near RW-3 (RW-3A, RW-3B, and RW-3C)	Product level in MW-3	MW-2 and MW-3 Purge Amount	Product level (thickness) in OWS	General observations (e.g., odors) or follow-up needed									
6/1/2022	PM	Sunny	B&L	11.02	NA		NA	NA	NA	NA		5.7	6.7	PMM contacted to install boom/batters west of 8A	OK	mild sheen	yes	sheen contained	No	Sweeps replaced on 3/28	0.22'	No measurable product	0.0'	-	-	-	-	no							
Weekend																																			
6/4/2022	AM	cloudy	Galeci	-	N/A		N/A	N/A	N/A	N/A		-	-	none	OK	sheen	yes	sheen contained	-	-	-	-	-	-	-	-	-	-	no						
6/5/2022	AM	cloudy	Galeci	-	N/A		N/A	N/A	N/A	N/A		-	-	none	OK	sheen	yes	sheen contained	-	-	-	-	-	-	-	-	-	-	no						
6/6/2022	AM	cloudy	Galeci	-	N/A		N/A	N/A	N/A	N/A		-	-	none	OK	sheen	yes	sheen contained	-	-	-	-	-	-	-	-	-	-	no						
6/7/2022	AM	cloudy	Galeci	-	N/A		N/A	N/A	N/A	N/A		-	-	none	OK	sheen	yes	sheen contained	-	-	-	-	-	-	-	-	-	-	no						
6/8/2022	AM	Sunny	B&L	20.84	NA		NA	No	No sheen	No	Mohawk River flooded. River level too high for boom to be effective	Flooded	Flooded	Mohawk River flooded	Harbor/amphitheater flooded	not contained	yes	PMM onsite to boom mouth of harbor and address sheen	Inaccessible	Inaccessible	Flooded	Flooded	0.0'	-	-	-	-	no							
Weekend																																			
6/11/2022	AM	cloudy	Galeci	-	N/A		N/A	yes	yes	yes		-	-	none	OK	sheen	yes	sheen contained	-	-	-	-	-	-	-	-	-	-	no						
6/12/2022	AM	cloudy	Galeci	-	N/A		N/A	yes	yes	yes		-	-	none	OK	sheen	yes	sheen contained	-	-	-	-	-	-	-	-	-	-	no						
6/13/2022	AM	cloudy	Galeci	-	N/A		N/A	yes	yes	yes		-	-	none	OK	sheen	yes	sheen contained	-	-	-	-	-	-	-	-	-	-	no						
6/14/2022	AM	cloudy	Galeci	-	N/A		N/A	yes	yes	yes		-	-	none	OK	sheen	yes	sheen contained	-	-	-	-	-	-	-	-	-	-	no						
6/15/2022	PM	Sunny	B&L	11.2	NA		NA	Yes	Yes	No		-	6.05	-	OK	mild sheen	yes	sheen contained	2 of 5 socks replaced	Sweeps will need replacing soon.	-	No measurable product	0.0'	-	-	-	-	no							
Weekend																																			
6/18/2022	AM	cloudy	Galeci	-	N/A		N/A	yes	yes	yes		-	-	none	OK	sheen	yes	sheen contained	-	-	-	-	-	-	-	-	-	-	no						
6/19/2022	AM	cloudy	Galeci	-	N/A		N/A	yes	yes	yes		-	-	none	OK	sheen	yes	sheen contained	-	-	-	-	-	-	-	-	-	-	no						
6/20/2022	AM	cloudy	Galeci	-	N/A		N/A	yes	yes	yes		-	-	none	OK	sheen	yes	sheen contained	-	-	-	-	-	-	-	-	-	-	no						
6/21/2022	AM	cloudy	Galeci	-	N/A		N/A	yes	yes	yes		-	-	none	OK	sheen	yes	sheen contained	-	-	-	-	-	-	-	-	-	-	no						
6/22/2022	PM	Sunny	B&L	13.09	NA		NA	Yes	Yes	Debris removed		3.84	4.8	-	OK. Will need replacing in near future.	mild sheen	yes	sheen contained	4 out of 5 socks replaced	Sweeps will need replacing soon. PMM contacted	0.13'	RW-3A: 0.04' product	0.0'	-	-	-	-	yes	Q2 monitoring event						
Weekend																																			
6/25/2022	AM	cloudy	Galeci	-	N/A		N/A	yes	yes	yes		-	-	none	OK	sheen	yes	sheen contained	-	-	-	-	-	-	-	-	-	-	no						
6/26/2022	AM	cloudy	Galeci	-	N/A		N/A	yes	yes	yes		-	-	none	OK	sheen	yes	sheen contained	-	-	-	-	-	-	-	-	-	-	no						
6/27/2022	AM	cloudy	Galeci	-	N/A		N/A	yes	yes	yes		-	-	none	OK	sheen	yes	sheen contained	-	-	-	-	-	-	-	-	-	-	no						
6/28/2022	AM	cloudy	Galeci	-	N/A		N/A	yes	yes	yes		-	-	none	OK	sheen	yes	sheen contained	-	-	-	-	-	-	-	-	-	-	no						
6/29/2022	AM	Sunny	B&L	10.51	N/A		N/A	Yes	Yes	Yes		6.2	7.35	-	No	Mild sheen	yes	booms not secure, PMM replaced and secured to dock, sheen contained.	4 out of 5 socks replaced	Sweeps will need replacing soon. PMM contacted	0.44'	No measurable product	0.0'	-	-	-	-	no							
Weekend																																			
6/2/2022	AM	rain	Galeci	-	N/A		N/A	yes	yes	yes		-	-	none	OK	yes	yes	sheen contained	-	-	-	-	-	-	-	-	-	-	no						
6/3/2022	AM	dry	Galeci	-	N/A		N/A	yes	yes	yes		-	-	none	OK	yes	yes	sheen contained	-	-	-	-	-	-	-	-	-	-	no						
6/4/2022	AM	rain	Galeci	-	N/A		N/A	yes	yes	yes		-	-	none	OK	yes	yes	sheen contained	-	-	-	-	-	-	-	-	-	-	no						
6/5/2022	AM	cloudy	Galeci	-	N/A		N/A	yes	yes	yes		-	-	none	OK	yes	yes	sheen contained	-	-	-	-	-	-	-	-	-	-	no						
6/6/2022	AM	Overcast	B&L	9.82	N/A		N/A	Yes	Yes	Yes	PMM contacted, containment boom to be installed	6.58	7.75	-	yes	yes	yes	sheen contained	4 out of 5 socks replaced	PMM replaced sweeps, in good condition	0.59'	No measurable product	0.0'	-	-	-	-	no							
Weekend																																			
6/9/2022	AM	sunny	Galeci	-	N/A		N/A	yes	yes	yes		-	-	none	OK	yes	yes	sheen contained	-	-	-	-	-	-	-	-	-	-	no						
6/10/2022	AM	sunny	Galeci	-	N/A		N/A	yes	yes	yes		-	-	none	OK	yes	yes	sheen contained	-	-	-	-	-	-	-	-	-	-	no						
6/11/2022	AM	sunny	Galeci	-	N/A		N/A	yes	yes	yes		-	-	none	OK	yes	yes	sheen contained	-	-	-	-	-	-	-	-	-	-	no						
6/12/2022	AM	sunny	Galeci	-	N/A		N/A	yes	yes	yes		-	-	none	OK	yes	yes	sheen contained	-	-	-	-	-	-	-	-	-	-	no						
6/13/2022	AM	Sunny	B&L	11.96	N/A		Yes	Yes	Yes	Yes		5.02	6	-	yes	yes	yes	sheen contained	4 out of 5 socks replaced	-	0.91'	No measurable product	0.0'	-	-	-	-	no							
Weekend																																			

# ALCO DAILY MONITORING LOG

1	2	3	4	5	6	7	8	9	10	11	12	13	14	15	16	17	18	19	20	21	22	23	24	25	26	27	28							
GENERAL				ALCO PARCEL A																								ALCO PARCEL B				ALCO PARCEL C		
				Blowers and Aerators			Riverbank booms					MW-73		Other	Harbor														DS-1		Other		Any work activity? (injections, groundwater monitoring, construction, etc.)	If yes to column 24, describe the activities performed in Parcel C
Date	Time	Weather (note precip)	Inspector initials	Freeman's Bridge staff gauge	Blowers and aerators effective?	If no to column 5, describe actions taken to correct	Containment boom effective?	Absorbent boom effective?	Is sheen, if present, fully contained in boom?	Is boomed area free of debris?	If no to columns 7-10, describe actions taken to correct	Depth to NAPL	Depth to GW	General observations (e.g., odors) or follow-up needed	Harbor booms/sweeps secure and in good condition?	Sheen, if present, fully contained in absorbents?	Are boomed areas free of debris?	If no to columns 15-17, describe actions taken to correct	Did absorbent socks in baffles need changed out?	Condition of eastern Harbor wall (e.g., staining on sweeps)	Product level in RW-3	Condition of additional wells near RW-3 (RW-3A, RW-3B, and RW-3C)	Product level in MW-3	MW-2 and MW-3 Purge Amount	Product level (thickness) in OWS	General observations (e.g., odors) or follow-up needed								
5/16/2022	AM	sunny	Galesi	-	N/A		yes	yes	yes	yes		-	-	none	yes	yes	yes	sheen contained		-	-	-	-	-	-	-	-	-	no					
5/17/2022	AM	Overcast	Galesi	-	N/A		yes	yes	yes	yes		-	-	none	yes	yes	yes	sheen contained	-	-	-	-	-	-	-	-	-	-	no					
5/18/2022	AM	sunny	Galesi	-	N/A		yes	yes	yes	yes		-	-	none	yes	yes	yes	sheen contained	-	-	-	-	-	-	-	-	-	-	no					
5/19/2022	AM	Overcast	Galesi	-	N/A		yes	yes	yes	yes		-	-	none	yes	yes	yes	sheen contained	-	-	-	-	-	-	-	-	-	-	no					
5/20/2022	PM	Sunny	B&L	12.07	N/A		yes	yes	yes	yes		4.77	6.42	-	yes	yes	yes	sheen contained	2 out of 5 socks replaced	-	0.6'	No measurable product	0.0'	-	-	-	-	no						
Weekend																																		
5/23/2022	AM	sunny	Galesi	-	N/A		yes	yes	yes	yes		-	-	none	OK	yes	yes	sheen contained	-	-	-	-	-	-	-	-	-	-	no					
5/24/2022	AM	Overcast	Galesi	-	N/A		yes	yes	yes	yes		-	-	none	OK	yes	yes	sheen contained	-	-	-	-	-	-	-	-	-	-	no					
5/25/2022	AM	sunny	Galesi	-	N/A		yes	yes	yes	yes		-	-	none	OK	yes	yes	sheen contained	-	-	-	-	-	-	-	-	-	-	no					
5/26/2022	AM	Partly cloudy	Galesi	-	N/A		yes	yes	yes	yes		-	-	none	OK	yes	yes	sheen contained	-	-	-	-	-	-	-	-	-	-	no					
5/27/2022	PM	overcast	B&L	11.98	N/A		yes	yes	yes	yes		4.99	6.42	-	OK	yes	yes	sheen contained	0 out of 5 socks replaced	Sweeps ok, need replacing soon	0.44'	No measurable product	0.0'	-	-	-	-	no						
Weekend																																		
Memorial Day																																		
5/31/2022	AM	sunny	Galesi	-	N/A		yes	yes	yes	yes		-	-	none	OK	yes	yes	sheen contained	-	-	-	-	-	-	-	-	-	-	no					
6/1/2022	AM	sunny	Galesi	-	N/A		yes	yes	yes	yes		-	-	none	OK	yes	yes	sheen contained	-	-	-	-	-	-	-	-	-	-	no					
6/2/2022	AM	sunny	Galesi	-	N/A		yes	yes	yes	yes		-	-	none	OK	yes	yes	sheen contained	-	-	-	-	-	-	-	-	-	-	no					
6/3/2022	AM	sunny	B&L	12.2	N/A		yes	yes	yes	yes		5.6	6.4	-	OK	yes	yes	sheen contained	0 out of 5 socks replaced	Sweeps ok, need replacing soon	0.65'	No measurable product	0.0'	-	-	-	-	no						
Weekend																																		
6/6/2022	AM	sunny	Galesi	-			yes	yes	yes	yes		-	-	none	OK	yes	yes	sheen contained	-	-	-	-	-	-	-	-	-	-	no					
6/7/2022	AM	overcast	Galesi	-	N/A		yes	yes	yes	yes		-	-	none	OK	yes	yes	sheen contained	-	-	-	-	-	-	-	-	-	-	no					
6/8/2022	AM	sunny	Galesi	-	N/A		yes	yes	yes	yes		-	-	none	OK	yes	yes	sheen contained	-	-	-	-	-	-	-	-	-	-	no					
6/9/2022	AM	Rain	Galesi	-	N/A		yes	yes	yes	yes		-	-	none	OK	yes	yes	sheen contained	-	-	-	-	-	-	-	-	-	-	no					
6/10/2022	AM	sunny	B&L	12.48	N/A		yes	yes	yes	yes		4.6	5.55	-	OK	yes	yes	sheen contained	0 out of 5 socks replaced	Sweeps ok, need replacing soon	0.33'	No measurable product	0.0'	-	-	-	-	no						
Weekend																																		
6/13/2022	AM	sunny	Galesi	-	N/A		yes	yes	yes	yes		-	-	none	OK	yes	yes	sheen contained	-	-	-	-	-	-	-	-	-	-	no					
6/14/2022	AM	overcast	Galesi	-	N/A		yes	yes	yes	yes		-	-	none	OK	yes	yes	sheen contained	-	-	-	-	-	-	-	-	-	-	no					
6/15/2022	AM	sunny	Galesi	-	N/A		yes	yes	yes	yes		-	-	none	OK	yes	yes	sheen contained	-	-	-	-	-	-	-	-	-	-	no					
6/16/2022	AM	overcast	Galesi	-	N/A		yes	yes	yes	yes		-	-	none	OK	yes	yes	sheen contained	-	-	-	-	-	-	-	-	-	-	no					
6/17/2022	AM	sunny	B&L	12.03'	N/A		yes	OK	yes	yes	PIM contacted, containment boom to be replaced 6/17	4.97	6.27	-	OK	yes	yes	PIM contacted, sweeps to be replaced 6/17. Sheen contained	5 out of 5 socks replaced	PIM contacted, sweeps to be replaced 6/17	0.45'	No measurable product	0.0'	-	-	-	-	no						
Weekend																																		
6/20/2022	AM	sunny	Galesi	-	N/A		yes	yes	yes	yes		-	-	none	Yes	yes	yes	sheen contained	-	-	-	-	-	-	-	-	-	-	no					
6/21/2022	AM	rain	Galesi	-	N/A		yes	yes	yes	yes		-	-	none	Yes	yes	yes	sheen contained	-	-	-	-	-	-	-	-	-	-	no					
6/22/2022	AM	rain	Galesi	-	N/A		yes	yes	yes	yes		-	-	none	Yes	yes	yes	sheen contained	-	-	-	-	-	-	-	-	-	-	no					
6/23/2022	AM	rain	Galesi	-	N/A		yes	yes	yes	yes		-	-	none	Yes	yes	yes	sheen contained	-	-	-	-	-	-	-	-	-	-	no					
6/24/2022	AM	sunny	B&L	12.74'	N/A		Yes	yes	yes	yes		4.41	5.23	-	Yes	yes	yes	sheen contained	0 out of 5 socks replaced	Good	0.18'	No measurable product	0.0'	-	-	-	-	no						
Weekend																																		

# ALCO DAILY MONITORING LOG

1	2	3	4	5	6	7	8	9	10	11	12	13	14	15	16	17	18	19	20	21	22	23	24	25	26	27	28	
GENERAL				ALCO PARCEL A														ALCO PARCEL B								ALCO PARCEL C		
				Blowers and Aerators			Riverbank booms					MW-73		Other	Harbor								DS-1		Other		Any work activity? (injection, groundwater monitoring, construction, etc.)	If yes to column 24, describe the activities performed in Parcel C
Date	Time	Weather (note precip)	Inspector initials	Freeman's Bridge staff gauge	Blowers and aerators effective?	If no to column 5, describe actions taken to correct	Containment boom effective?	Absorbent boom effective?	Is sheen, if present, fully contained in boom?	Is boomed area free of debris?	If no to columns 7-10, describe actions taken to correct	Depth to NAPL	Depth to GW	General observations (e.g., odors) or follow-up needed	Harbor booms/sweeps secure and in good condition?	Sheen, if present, fully contained in absorbents?	Are boomed areas free of debris?	If no to columns 15-17, describe actions taken to correct	Did absorbent socks in baffles need changed out?	Condition of eastern Harbor wall (e.g., staining on sweep)	Product level in RW-3	Condition of additional wells near RW-3 (RW-3A, RW-3B, and RW-3C)	Product level in MW-3	MW-2 and MW-3 Purge Amount	Product level (thickness) in OWS	General observations (e.g., odors) or follow-up needed		
6/27/2022	AM	rain	Galeci	-	N/A		yes	yes	yes	yes		-	-	none	Yes	yes	yes	sheen contained	-	-	-	-	-	-	-	-	no	
6/28/2022	AM	sunny	Galeci	-	N/A		yes	yes	yes	yes		-	-	none	Yes	yes	yes	sheen contained	-	-	-	-	-	-	-	-	no	
6/29/2022	AM	sunny	Galeci	-	N/A		yes	yes	yes	yes		-	-	none	Yes	yes	yes	sheen contained	-	-	-	-	-	-	-	-	no	
6/30/2022	AM	sunny	Galeci	-	N/A		yes	yes	yes	yes		-	-	none	Yes	yes	yes	sheen contained	-	-	-	-	-	-	-	-	no	
7/1/2022	AM	sunny	B&L	12.07'	N/A		Yes	yes	yes	yes		4.95	6.1	-	Yes	yes	yes	sheen contained	0 out of 5 socks replaced	Good	0.38'	No measurable product	0.0'	-	-	-	no	
Weekend																												
4th of July																												
7/5/2022	AM	sunny	Galeci	-	N/A		yes	yes	yes	yes		-	-	none	Yes	yes	yes	sheen contained	-	-	-	-	-	-	-	-	no	
7/6/2022	AM	sunny	Galeci	-	N/A		yes	yes	yes	yes		-	-	none	Yes	yes	yes	sheen contained	-	-	-	-	-	-	-	-	no	
7/7/2022	AM	sunny	Galeci	-	N/A		yes	yes	yes	yes		-	-	none	Yes	yes	yes	sheen contained	-	-	-	-	-	-	-	-	no	
7/8/2022	AM	sunny	B&L	11.95'	N/A		Yes	yes	yes	yes		5.1	6.3	-	Yes	yes	yes	sheen contained	0 out of 5 socks replaced	Good	N/A	No measurable product	0.0'	-	-	-	no	
Weekend																												
7/11/2022	AM	Cloudy	Galeci	-	N/A		yes	yes	yes	yes		-	-	none	Yes	yes	yes	sheen contained	-	-	-	-	-	-	-	-	no	
7/12/2022	AM	Cloudy	Galeci	-	N/A		yes	yes	yes	yes		-	-	none	Yes	yes	yes	sheen contained	-	-	-	-	-	-	-	-	no	
7/13/2022	AM	Cloudy	Galeci	-	N/A		yes	yes	yes	yes		-	-	none	Yes	yes	yes	sheen contained	-	-	-	-	-	-	-	-	no	
7/14/2022	AM	Cloudy	Galeci	-	N/A		yes	yes	yes	yes		-	-	none	Yes	yes	yes	sheen contained	-	-	-	-	-	-	-	-	no	
7/15/2022	AM	sunny	B&L	12.07'	N/A		Yes	yes	yes	yes		5.03	6.18	-	Yes	yes	yes	sheen contained	0 out of 5 socks replaced	Good	0.37'	No measurable product	0.0'	-	-	-	no	
Weekend																												
7/18/2022	AM	rain	Galeci	-	Yes	PMI installed aerators	yes	yes	yes	yes		-	-	none	Yes	yes	yes	sheen contained	-	-	-	-	-	-	-	-	no	
7/19/2022	AM	cloudy	Galeci	-	Yes		yes	yes	yes	yes		-	-	none	Yes	yes	yes	sheen contained	-	-	-	-	-	-	-	-	no	
7/20/2022	AM	sunny	Galeci	-	Yes		yes	yes	yes	yes		-	-	none	Yes	yes	yes	sheen contained	-	-	-	-	-	-	-	-	no	
7/21/2022	AM	cloudy	Galeci	-	Yes		yes	yes	yes	yes		-	-	none	Yes	yes	yes	sheen contained	-	-	-	-	-	-	-	-	no	
7/22/2022	AM	sunny	B&L	11.95'	Yes		Yes	yes	yes	yes		4.98	6.11	-	OK	yes	yes	sheen contained	0 out of 5 socks replaced	Good	0.5'	No measurable product	0.0'	-	-	-	no	
Weekend																												
7/25/2022	AM	rain	Galeci	-	Yes		yes	yes	yes	yes		-	-	none	Yes	yes	yes	sheen contained	-	-	-	-	-	-	-	-	no	
7/26/2022	AM	clear	Galeci	-	Yes		yes	yes	yes	yes		-	-	none	Yes	yes	yes	sheen contained	-	-	-	-	-	-	-	-	Yes	Quarterly groundwater monitoring
7/27/2022	AM	clear	Galeci	-	Yes		yes	yes	yes	yes		-	-	none	Yes	yes	yes	sheen contained	-	-	-	-	-	-	-	-	Yes	Quarterly groundwater monitoring
7/28/2022	AM	rain	Galeci	-	Yes		yes	yes	yes	yes		-	-	none	Yes	yes	yes	sheen contained	-	-	-	-	-	-	-	-	no	
7/29/2022	AM	sunny	B&L	12'	Yes		Yes	yes	yes	yes		5.07	6.27	-	OK	yes	yes	sheen contained	0 out of 5 socks replaced	Good	0.27'	No measurable product	0.0'	-	-	-	no	
Weekend																												
8/1/2022	AM	sunny	Galeci	-	Yes		yes	yes	yes	yes		-	-	none	Yes	yes	yes	sheen contained	-	-	-	-	-	-	-	-	no	
8/2/2022	AM	sunny	Galeci	-	Yes		yes	yes	yes	yes		-	-	none	Yes	yes	yes	sheen contained	-	-	-	-	-	-	-	-	no	
8/3/2022	AM	sunny	Galeci	-	Yes		yes	yes	yes	yes		-	-	none	Yes	yes	yes	sheen contained	-	-	-	-	-	-	-	-	no	
8/4/2022	AM	sunny	Galeci	-	Yes		yes	yes	yes	yes		-	-	none	Yes	yes	yes	sheen contained	-	-	-	-	-	-	-	-	no	
8/5/2022	AM	sunny	B&L	11.98'	Yes		Yes	yes	yes	yes		5.11	6.3	-	OK	yes	yes	sheen contained	2 of 5 socks replaced	Good	0.38'	No measurable product	0.0'	-	-	-	no	
Weekend																												

ALCO DAILY MONITORING LOG																													
1	2	3	4	5	6	7	8	9	10	11	12	13	14	15	16	17	18	19	20	21	22	23	24	25	26	27	28		
GENERAL				ALCO PARCEL A														ALCO PARCEL B										ALCO PARCEL C	
				Blowers and Aerators			Riverbank booms					MW-73		Other		Harbor							DS-1			Other		Any work activity? (injections, groundwater monitoring, construction, etc.)	If yes to column 24, describe the activities performed in Parcel C
Date	Time	Weather (note precip)	Inspector initials	Freeman's Bridge staff gauge	Blowers and aerators effective?	If no to column 5, describe actions taken to correct	Containment boom effective?	Absorbent boom effective?	Is sheen, if present, fully contained in boom?	Is boomed area free of debris?	If no to columns 7-10, describe actions taken to correct	Depth to NAP	Depth to GV	General observations (e.g., odors) or follow-up needed	Harbor booms/sweeps secure and in good condition?	Sheen, if present, fully contained in absorbents?	Are boomed areas free of debris?	If no to columns 15-17, describe actions taken to correct	Did absorbent socks in baffles need changed out?	Condition of eastern Harbor wall (e.g., staining on sweeps)	Product level in RW-3	Condition of additional wells near RW-3 (RW-3A, RW-3B, and RW-3C)	Product level in MW-3	MW-2 and MW-3 Purge Amount	Product level (thickness) in OWS	General observations (e.g., odors) or follow-up needed			
8/8/2022	AM	rain	Galeci	-	Yes		yes	yes	yes	yes		-	-	none	Yes	yes	yes	sheen contained	-	-	-	-	-	-	-	-	no		
8/9/2022	AM	cloudy	Galeci	-	Yes		yes	yes	yes	yes		-	-	none	Yes	yes	yes	sheen contained	-	-	-	-	-	-	-	-	no		
8/10/2022	AM	sunny	Galeci	-	Yes		yes	yes	yes	yes		-	-	none	Yes	yes	yes	sheen contained	-	-	-	-	-	-	-	-	no		
8/11/2022	AM	sunny	Galeci	-	Yes		yes	yes	yes	yes		-	-	none	Yes	yes	yes	sheen contained	-	-	-	-	-	-	-	-	yes	Surge testing on DS wells	
8/12/2022	AM	sunny	B&L	11.87'	Yes		Yes	yes	yes	yes		5.2	6.37	-	Ok	yes	yes	sheen contained	0 of 5 socks replaced	Good	0.47'	No measurable product	0.04'	-	-	-	no		
Weekend																													
8/15/2022	AM	sunny	Galeci	-	Yes		yes	yes	yes	yes		-	-	none	Yes	yes	yes	sheen contained	-	-	-	-	-	-	-	-	no		
8/16/2022	AM	sunny	Galeci	-	Yes		yes	yes	yes	yes		-	-	none	Yes	yes	yes	sheen contained	-	-	-	-	-	-	-	-	no		
8/17/2022	AM	sunny	Galeci	-	Yes		yes	yes	yes	yes		-	-	none	Yes	yes	yes	sheen contained	-	-	-	-	-	-	-	-	no		
8/18/2022	AM	rain	Galeci	-	no	Aerators turned off due to low water level.	yes	yes	yes	yes		-	-	none	Yes	yes	yes	RM replaced harbor booms and skirting, added skirting in front of dock.	-	-	-	-	-	-	-	-	no		
8/19/2022	AM	sunny	B&L	10.48'	no		Yes	yes	yes	yes		6.5	7.6	-	yes	yes	yes	sheen contained	1 of 5 socks replaced	Good	0.41'	No measurable product	0.07'	-	-	-	no		
Weekend																													
8/22/2022	AM	rain	Galeci	-	Yes		yes	yes	yes	yes		-	-	none	Yes	yes	yes	sheen contained	-	-	-	-	-	-	-	-	no		
8/23/2022	AM	rain	Galeci	-	Yes		yes	yes	yes	yes		-	-	none	Yes	yes	yes	sheen contained	-	-	-	-	-	-	-	-	no		
8/24/2022	AM	sunny	Galeci	-	Yes		yes	yes	yes	yes		-	-	none	Yes	no	yes	RM contacted, sheen cleaned from harbor	-	-	-	-	-	-	-	-	no		
8/25/2022	AM	sunny	Galeci	-	yes		yes	yes	yes	yes		-	-	none	Yes	yes	yes	sheen contained	-	-	-	-	-	-	-	-	no		
8/26/2022	AM	sunny	B&L	11.97'	yes		Yes	yes	yes	yes		5.04	6.35	-	yes	yes	yes	sheen contained	2 of 5 socks replaced	Good	0.46'	No measurable product	0.07'	-	-	-	no		
Weekend																													
8/27/2022	AM	Cloudy	Galeci	-	Yes		yes	yes	yes	yes		-	-	none	Yes	yes	yes	sheen contained	-	-	-	-	-	-	-	-	no		
8/28/2022	AM	rain	Galeci	-	Yes		yes	yes	yes	yes		-	-	none	Yes	yes	yes	sheen contained	-	-	-	-	-	-	-	-	no		
8/29/2022	AM	sunny	Galeci	-	Yes		yes	yes	yes	yes		-	-	none	Yes	yes	yes	sheen contained	-	-	-	-	-	-	-	-	no		
8/30/2022	AM	sunny	Galeci	-	yes		yes	yes	yes	yes		-	-	none	Yes	yes	yes	sheen contained	-	-	-	-	-	-	-	-	no		
8/31/2022	AM	sunny	B&L	12.07'	yes		Yes	yes	yes	yes		4.92	6.34	-	yes	yes	yes	RM contacted to clean up sheen noted by kayak shed in harbor.	1 of 5 socks replaced	Good	0.62'	No measurable product	0.07'	-	-	-	yes	Pump in RW-3 being replaced	
Weekend																													
Labor Day																													
9/5/2022	AM	rain	Galeci	-	Yes		yes	yes	yes	yes		-	-	none	Yes	yes	yes	sheen contained	-	-	-	-	-	-	-	-	no		
9/7/2022	AM	Rain	Galeci	-	Yes		yes	yes	yes	yes		-	-	none	Yes	yes	yes	sheen contained	-	-	-	-	-	-	-	-	no		
9/8/2022	AM	sunny	Galeci	-	yes		yes	yes	yes	yes		-	-	none	Yes	yes	yes	sheen contained	-	-	-	-	-	-	-	-	no		
9/9/2022	AM	sunny	B&L	11.86	yes		Yes	yes	yes	yes		5.04	6.6	-	yes	yes	yes	sheen contained	0 of 5 socks replaced	Good	0.39'	No measurable product	0.00'	-	-	-	no		
Weekend																													
9/12/2022	AM	rain	Galeci	-	Yes		yes	yes	yes	yes		-	-	none	Yes	yes	yes	sheen contained	-	-	-	-	-	-	-	-	no		
9/13/2022	AM	rain	Galeci	-	Yes		yes	yes	yes	yes		-	-	none	Yes	yes	yes	sheen contained	-	-	-	-	-	-	-	-	no		
9/14/2022	AM	sunny	Galeci	-	Yes		yes	yes	yes	yes		-	-	none	Yes	yes	yes	sheen contained	-	-	-	-	-	-	-	-	no		
9/15/2022	AM	sunny	Galeci	-	yes		yes	yes	yes	yes		-	-	none	Yes	yes	yes	sheen contained	-	-	-	-	-	-	-	-	no		
9/16/2022	AM	sunny	B&L	12.09	yes		Yes	yes	yes	yes		4.91	6.5	-	yes	yes	yes	sheen contained	0 of 5 socks replaced	Good	0.57'	No measurable product	0.00'	-	-	-	yes	Annual harbor samplings	
Weekend																													

Barton & Loguidice

ALCO DAILY MONITORING LOG

1	2	3	4	5	6	7	8	9	10	11	12	13	14	15	16	17	18	19	20	21	22	23	24	25	26	27	28		
GENERAL				ALCO PARCEL A														ALCO PARCEL B								ALCO PARCEL C			
				Blowers and Aerators			Riverbank booms					MW-73		Other		Harbor								DS-1		Other		Any work activity? (injections, groundwater monitoring, construction, etc.)	If yes to column 24, describe the activities performed in Parcel C.
Date	Time	Weather (note precip)	Inspector Initials	Freeman's Bridge staff gauge	Blowers and aerators effective?	If no to column 5, describe actions taken to correct	Containment boom effective?	Absorbent boom effective?	Is sheen, if present, fully contained in boom?	Is boomed area free of debris?	If no to columns 7-10, describe actions taken to correct	Depth to NAPL	Depth to GW	General observations (e.g., odors) or follow-up needed	Harbor booms/sweeps secure and in good condition?	Sheen, if present, fully contained in absorbents?	Are boomed areas free of debris?	If no to columns 15-17, describe actions taken to correct	Did absorbent socks in baffles need changed out?	Condition of eastern Harbor wall (e.g., staining on sweep)	Product level in RW-3	Condition of additional wells near RW-3 (RW-3A, RW-3B, and RW-3C)	Product level in MW-3	MW-2 and MW-3 Purge Amount	Product level (thickness) in OWS	General observations (e.g., odors) or follow-up needed			
9/18/2022	AM	sunny	Galeci	-	Yes		yes	yes	yes	yes		-	-	none	Yes	yes	yes	sheen contained	-	-	-	-	-	-	-	-	no		
9/20/2022	AM	rain	Galeci	-	Yes		yes	yes	yes	yes		-	-	none	Yes	yes	yes	sheen contained	-	-	-	-	-	-	-	-	no		
9/21/2022	AM	rain	Galeci	-	Yes		yes	yes	yes	yes		-	-	none	Yes	yes	yes	sheen contained	-	-	-	-	-	-	-	-	no		
9/22/2022	AM	rain	Galeci	-	yes		yes	yes	yes	yes		-	-	none	Yes	yes	yes	sheen contained	-	-	-	-	-	-	-	-	no		
9/23/2022	AM	sunny	B&L	11.92	yes		Yes	yes	yes	yes		4.85	6.55	-	yes	yes	yes	sheen contained	0 of 5 socks replaced	Good	0.29'	No measurable product	0.00'	-	-	-	no		
Weekend																													
9/26/2022	AM	overcast	Galeci	-	Yes		yes	yes	yes	yes		-	-	none	Yes	yes	yes	sheen contained	-	-	-	-	-	-	-	-	no		
9/27/2022	AM	sunny	Galeci	-	Yes		yes	yes	yes	yes		-	-	none	Yes	yes	yes	sheen contained	-	-	-	-	-	-	-	-	yes	MW-72 redevelopment	
9/28/2022	AM	sunny	Galeci	-	Yes		yes	yes	no	yes	Precision contacted, sheen contained	-	-	none	Yes	yes	yes	sheen contained	-	-	-	-	-	-	-	-	no		
9/29/2022	AM	sunny	Galeci	-	yes		yes	yes	yes	yes		-	-	none	Yes	yes	yes	sheen contained	-	-	-	-	-	-	-	-	no		
9/30/2022	AM	sunny	B&L	12.31	yes		Yes	yes	yes	yes		4.58	5.78	-	yes	yes	yes	sheen contained	0 of 5 socks replaced	Good	0.38'	No measurable product	0.00'	-	-	-	no		
Weekend																													
10/3/2022	AM	sunny	Galeci	-	Yes		yes	yes	yes	yes		-	-	none	Yes	yes	yes	sheen contained	-	-	-	-	-	-	-	-	no		
10/4/2022	AM	cloudy	Galeci	-	Yes		yes	yes	yes	yes		-	-	none	Yes	yes	yes	sheen contained	-	-	-	-	-	-	-	-	no		
10/5/2022	AM	rain	Galeci	-	Yes		yes	yes	yes	yes		-	-	none	Yes	yes	yes	sheen contained	-	-	-	-	-	-	-	-	yes	Q4 groundwater sampling	
10/6/2022	AM	sunny	Galeci	-	yes		yes	yes	yes	yes		-	-	none	Yes	yes	yes	sheen contained	-	-	-	-	-	-	-	-	yes	Q4 groundwater sampling	
10/7/2022	AM	sunny	B&L	12.17	yes		Yes	yes	yes	yes		4.99	5.45	-	yes	yes	yes	Precision replaced sweep along east harbor wall this week.	0 of 5 socks replaced	Good	0.25'	No measurable product	0.00'	-	-	-	no		
Weekend																													
10/10/2022	AM	sunny	Galeci	-	Yes		yes	yes	yes	yes		-	-	none	Yes	yes	yes	sheen contained	-	-	-	-	-	-	-	-	no		
10/11/2022	AM	sunny	Galeci	-	Yes		yes	yes	yes	yes		-	-	none	Yes	yes	yes	sheen contained	-	-	-	-	-	-	-	-	no		
10/12/2022	AM	sunny	Galeci	-	Yes		yes	yes	yes	yes		-	-	none	Yes	yes	yes	sheen contained	-	-	-	-	-	-	-	-	no		
10/13/2022	AM	cloudy	Galeci	-	yes		yes	yes	yes	yes		-	-	none	Yes	yes	yes	sheen contained	-	-	-	-	-	-	-	-	no		
10/14/2022	AM	sunny	B&L	12.18	yes		Yes	yes	yes	yes		4.85	4.98	-	yes	yes	yes	sheen contained	0 of 5 socks replaced	Good	0.12'	No measurable product	0.00'	-	-	-	no		
Weekend																													
10/17/2022	AM	cloudy	Galeci	-	Yes		yes	yes	yes	yes		-	-	none	Yes	yes	yes	sheen contained	-	-	-	-	-	-	-	-	no		
10/18/2022	AM	rain	Galeci	-	Yes		yes	yes	yes	yes		-	-	none	Yes	yes	yes	sheen contained	-	-	-	-	-	-	-	-	no		
10/19/2022	AM	sunny	Galeci	-	Yes		yes	yes	yes	yes		-	-	none	Yes	yes	yes	sheen contained	-	-	-	-	-	-	-	-	no		
10/20/2022	AM	sunny	Galeci	-	yes		yes	yes	yes	yes		-	-	none	Yes	yes	yes	sheen contained	-	-	-	-	-	-	-	-	no		
10/21/2022	AM	sunny	B&L	12.1	yes		Yes	yes	yes	yes		N/A	4.9	-	yes	yes	yes	sheen contained	0 of 5 socks replaced	Good	1.6'	No measurable product	0.00'	-	-	-	no		
Weekend																													

Barton & Loguidice

ALCO DAILY MONITORING LOG

1	2	3	4	5	6	7	8	9	10	11	12	13	14	15	16	17	18	19	20	21	22	23	24	25	26	27	28			
GENERAL				ALCO PARCEL A														ALCO PARCEL B							ALCO PARCEL C					
				Blowers and Aerators			Riverbank booms					MW-73		Other		Harbor									DS-1		Other		Any work activity? (injections, groundwater monitoring, construction, etc.)	If yes to column 24, describe the activities performed in Parcel C
Date	Time	Weather (note precip)	Inspector initials	Freeman's Bridge staff gauge	Blowers and aerators effective?	If no to column 5, describe actions taken to correct	Containment boom effective?	Absorbent boom effective?	Is sheen, if present, fully contained in boom?	Is boomed area free of debris?	If no to columns 7-10, describe actions taken to correct	Depth to NAPL	Depth to GW	General observations (e.g., odors) or follow-up needed	Harbor booms/sweeps secure and in good condition?	Sheen, if present, fully contained in absorbents?	Are boomed areas free of debris?	If no to columns 15-17, describe actions taken to correct	Did absorbent socks in baffles need changed out?	Condition of eastern Harbor wall (e.g., staining on sweep)	Product level in RW-3	Condition of additional wells near RW-3 (RW-3A, RW-3B, and RW-3C)	Product level in MW-3	MW-2 and MW-3 Purge Amount	Product level (thickness) in OWS	General observations (e.g., odors) or follow-up needed				
	AM	rain	Galeci	-	Yes		yes	yes	yes	yes		-	-	none	Yes	yes	yes	sheen contained	-	-	-	-	-	-	-	-	no			
10/24/2022	AM	cloudy	Galeci	-	Yes		yes	yes	yes	yes		-	-	none	Yes	yes	yes	sheen contained	-	-	-	-	-	-	-	-	no			
10/25/2022	AM	sunny	Galeci	-	Yes		yes	yes	yes	yes		-	-	none	Yes	yes	yes	sheen contained	-	-	-	-	-	-	-	-	no			
10/26/2022	AM	sunny	Galeci	-	yes		yes	yes	yes	yes		-	-	none	Yes	yes	yes	sheen contained	-	-	-	-	-	-	-	-	no			
10/27/2022	AM	sunny	Galeci	-	yes		yes	yes	yes	yes		-	-	none	Yes	yes	yes	sheen contained	-	-	-	-	-	-	-	-	no			
10/28/2022	AM	sunny	B&L	11.89	yes		Yes	yes	yes	yes		N/A	5.15	-	yes	yes	yes	sheen contained	0 of 5 socks replaced	Good	0.20'	No measurable product	0.00'	-	-	-	no			
Weekend																														
10/31/2022	AM	cloudy	Galeci	-	Yes		yes	yes	yes	yes		-	-	none	Yes	yes	yes	sheen contained	-	-	-	-	-	-	-	-	no			
11/1/2022	AM	cloudy	Galeci	-	Yes		yes	yes	yes	yes		-	-	none	Yes	yes	yes	sheen contained	-	-	-	-	-	-	-	-	no			
11/2/2022	AM	sunny	Galeci	-	Yes		yes	yes	yes	yes		-	-	none	Yes	yes	yes	sheen contained	-	-	-	-	-	-	-	-	no			
11/3/2022	AM	sunny	Galeci	-	yes		yes	yes	yes	yes		-	-	none	Yes	yes	yes	sheen contained	-	-	-	-	-	-	-	-	no			
11/4/2022	AM	sunny	B&L	9.54	yes		Yes	yes	yes	yes		7.44	7.61	-	yes	no	yes	Precision contacted to clean up sheen noted in front of electrical panel along the east harbor wall.	0 of 5 socks replaced	Good	0.25'	No measurable product	0.00'	-	-	-	no			
Weekend																														
11/7/2022	AM	sunny	Galeci	-	Yes		yes	yes	yes	yes		-	-	none	Yes	yes	yes	sheen contained	-	-	-	-	-	-	-	-	no			
11/8/2022	AM	sunny	Galeci	-	Yes		yes	yes	yes	yes		-	-	none	Yes	yes	yes	sheen contained	-	-	-	-	-	-	-	-	no			
11/9/2022	AM	sunny	Galeci	-	Yes		yes	yes	yes	yes		-	-	none	Yes	yes	yes	sheen contained	-	-	-	-	-	-	-	-	no			
11/10/2022	AM	sunny	Galeci	-	yes		yes	yes	yes	yes		-	-	none	Yes	yes	yes	sheen contained	-	-	-	-	-	-	-	-	no			
11/11/2022	AM	sunny	B&L	9.9	yes		Yes	yes	yes	yes		N/A	7.28	-	yes	Yes	yes	sheen contained	0 of 5 socks replaced	Good	0.25'	No measurable product	0.00'	-	-	-	no			
Weekend																														
11/14/2022	AM	cloudy	Galeci	-	N/A	Aerators removed by PIM for winter.	N/A	yes	yes	yes	Containment boom removed by PIM for winter.	-	-	none	Yes	yes	yes	sheen contained	-	-	-	-	-	-	-	-	no			
11/15/2022	AM	cloudy	Galeci	-	N/A		N/A	yes	yes	yes		-	-	none	Yes	yes	yes	sheen contained	-	-	-	-	-	-	-	-	no			
11/16/2022	AM	snow	Galeci	-	N/A		N/A	yes	yes	yes		-	-	none	Yes	yes	yes	sheen contained	-	-	-	-	-	-	-	-	no			
11/17/2022	AM	sunny	Galeci	-	N/A		N/A	yes	yes	yes		-	-	none	Yes	yes	yes	sheen contained	-	-	-	-	-	-	-	-	no			
11/18/2022	AM	sunny	B&L	10.2	N/A		N/A	yes	yes	yes		6.95	7.00	-	yes	Yes	yes	sheen contained	0 of 5 socks replaced	Good	0.36'	No measurable product	0.00'	-	-	-	no			
Weekend																														
11/21/2022	AM	cloudy	Galeci	-	N/A		N/A	yes	yes	yes		-	-	none	Yes	yes	yes	sheen contained	-	-	-	-	-	-	-	-	no			
11/22/2022	AM	cloudy	Galeci	-	N/A		N/A	yes	yes	yes		-	-	none	Yes	yes	yes	sheen contained	-	-	-	-	-	-	-	-	no			
11/23/2022	AM	cloudy	Galeci	-	N/A		N/A	yes	yes	yes		-	-	none	Yes	yes	yes	sheen contained	-	-	-	-	-	-	-	-	no			
Holiday																														
Holiday																														
Weekend																														
11/28/2022	AM	cloudy	Galeci	-	N/A		N/A	N/A	N/A	N/A	Absorbent boom removed by PIM for winter.	-	-	none	Yes	yes	yes	sheen contained	-	-	-	-	-	-	-	-	no			
11/29/2022	AM	cloudy	Galeci	-	N/A		N/A	N/A	N/A	N/A		-	-	none	Yes	yes	yes	sheen contained	-	-	-	-	-	-	-	-	no			
11/30/2022	AM	rain	Galeci	-	N/A		N/A	N/A	N/A	N/A		-	-	none	Yes	yes	yes	sheen contained	-	-	-	-	-	-	-	-	no			
12/1/2022	AM	sunny	Galeci	-	N/A		N/A	N/A	N/A	N/A		-	-	none	Yes	yes	yes	sheen contained	-	-	-	-	-	-	-	-	no			
12/2/2022	AM	sunny	B&L	10.74	N/A		N/A	N/A	N/A	N/A		6.5	6.75	-	yes	Yes	yes	PIM replacing sweep along east harbor wall	0 of 5 socks replaced	Good	0.42'	No measurable product	0.00'	-	-	-	no			
Weekend																														



**ALCO DAILY MONITORING LOG**

1	2	3	4	5	6	7	8	9	10	11	12	13	14	15	16	17	18	19	20	21	22	23	24	25	26	27	28		
GENERAL				ALCO PARCEL A														ALCO PARCEL B							ALCO PARCEL C				
				Blowers and Aerators			Riverbank booms					MW-73		Other		Harbor								DS-1		Other		Any work activity? (injections, groundwater monitoring, construction, etc.)	If yes to column 24, describe the activities performed in Parcel C
Date	Time	Weather (note precip)	Inspector initials	Freeman's Bridge staff gauge	Blowers and aerators effective?	If no to column 5, describe actions taken to correct	Containment boom effective?	Absorbent boom effective?	Is sheen, if present, fully contained in boom?	Is boomed area free of debris?	If no to columns 7-10, describe actions taken to correct	Depth to NAPL	Depth to GW	General observations (e.g., odors) or follow-up needed	Harbor booms/sweeps secure and in good condition?	Sheen, if present, fully contained in absorbents?	Are boomed areas free of debris?	If no to columns 15-17, describe actions taken to correct	Did absorbent socks in baffles need changed out?	Condition of eastern Harbor wall (e.g., staining on sweeps)	Product level in RW-3	Condition of additional wells near RW-3 (RW-3A, RW-3B, and RW-3C)	Product level in MW-3	MW-2 and MW-3 Purge Amount	Product level (thickness) in OWS	General observations (e.g., odors) or follow-up needed			
12/5/2022	AM	cloudy	Galeci	-	N/A		N/A	N/A	N/A	N/A		-	-	none	Yes	yes	yes	sheen contained	-	-	-	-	-	-	-	-	no		
12/6/2022	AM	rain	Galeci	-	N/A		N/A	N/A	N/A	N/A		-	-	none	Yes	yes	yes	sheen contained	-	-	-	-	-	-	-	-	no		
12/7/2022	AM	rain	Galeci	-	N/A		N/A	N/A	N/A	N/A		-	-	none	Yes	yes	yes	sheen contained	-	-	-	-	-	-	-	-	no		
12/8/2022	AM	sunny	Galeci	-	N/A		N/A	N/A	N/A	N/A		-	-	none	Yes	yes	yes	sheen contained	-	-	-	-	-	-	-	-	no		
12/9/2022	AM	sunny	B&L	11.38	N/A		N/A	N/A	N/A	N/A		5.64	6.16	-	yes	Yes	yes	sheen contained	0 of 5 socks replaced	Good	0.41'	No measurable product	0.00'	-	-	-	no		
Weekend																													
12/12/2022	AM	snow	Galeci	-	N/A		N/A	N/A	N/A	N/A		-	-	none	Yes	yes	yes	sheen contained	-	-	-	-	-	-	-	-	no		
12/13/2022	AM	sunny	Galeci	-	N/A		N/A	N/A	N/A	N/A		-	-	none	Yes	yes	yes	sheen contained	-	-	-	-	-	-	-	-	no		
12/14/2022	AM	sunny	Galeci	-	N/A		N/A	N/A	N/A	N/A		-	-	none	Yes	yes	yes	sheen contained	-	-	-	-	-	-	-	-	no		
12/15/2022	AM	sunny	Galeci	-	N/A		N/A	N/A	N/A	N/A		-	-	none	Yes	yes	yes	sheen contained	-	-	-	-	-	-	-	-	no		
12/16/2022	B&L inspection not done																												
Weekend																													
12/19/2022	PM	sunny	B&L	10.47	N/A		N/A	N/A	N/A	N/A		6.59	7.20	-	N/A	No sheen	yes	No sheen noted	0 of 5 socks replaced	Good	0.54'	No measurable product	0.00'	-	-	-	no		
12/20/2022	AM	sunny	Galeci	-	N/A		N/A	N/A	N/A	N/A		-	-	none	Yes	yes	yes	No sheen noted	-	-	-	-	-	-	-	-	no		
12/21/2022	AM	sunny	Galeci	-	N/A		N/A	N/A	N/A	N/A		-	-	none	Yes	yes	yes	No sheen noted	-	-	-	-	-	-	-	-	no		
12/22/2022	AM	sunny	Galeci	-	N/A		N/A	N/A	N/A	N/A		-	-	none	Yes	yes	yes	No sheen noted	-	-	-	-	-	-	-	-	no		
12/23/2022	AM	overcast	B&L	11.01	N/A		N/A	N/A	N/A	N/A		6.04	6.60	-	yes	Yes	yes	No sheen noted	0 of 5 socks replaced	Good	0.40'	No measurable product	0.00'	-	-	-	no		
Weekend																													
Holiday																													
12/27/2022	AM	sunny	Galeci	-	N/A		N/A	N/A	N/A	N/A		-	-	none	Yes	yes	yes	No sheen noted	-	-	-	-	-	-	-	-	no		
12/28/2022	AM	sunny	Galeci	-	N/A		N/A	N/A	N/A	N/A		-	-	none	Yes	yes	yes	No sheen noted	-	-	-	-	-	-	-	-	no		
12/29/2022	PM	sunny	B&L	10.73	N/A		N/A	N/A	N/A	N/A		6.1	6.57	-	yes	Yes	yes	Sheen noted on top of ice, contained	0 of 5 socks replaced	Good	0.21'	No measurable product	0.00'	-	-	-	no		
Weekend																													
Holiday																													
1/3/2023	AM	cloudy	Galeci	-	N/A		N/A	N/A	N/A	N/A		-	-	none	Yes	yes	yes	No sheen noted	-	-	-	-	-	-	-	-	no		
1/4/2023	AM	rain	Galeci	-	N/A		N/A	N/A	N/A	N/A		-	-	none	Yes	yes	yes	No sheen noted	-	-	-	-	-	-	-	-	no		
1/5/2023	AM	cloudy	Galeci	-	N/A		N/A	N/A	N/A	N/A		-	-	none	Yes	yes	yes	No sheen noted	-	-	-	-	-	-	-	-	no		
1/6/2023	AM	overcast	B&L	12.15	N/A		N/A	N/A	N/A	N/A		4.76	5.13	-	yes	Yes	yes	No sheen noted	0 of 5 socks replaced	Good	0.07'	No measurable product	0.00'	-	-	-	no		
Weekend																													
1/9/2023	AM	sunny	Galeci	-	N/A		N/A	N/A	N/A	N/A		-	-	none	Yes	yes	yes	No sheen noted	-	-	-	-	-	-	-	-	no		
1/10/2023	AM	sunny	Galeci	-	N/A		N/A	N/A	N/A	N/A		-	-	none	Yes	yes	yes	No sheen noted	-	-	-	-	-	-	-	-	no		
1/11/2023	PM	sunny	B&L	10.45	N/A		N/A	N/A	N/A	N/A		6.5	6.95	-	N/A	No sheen	yes	No sheen noted	0 of 5 socks replaced	Good	0.08'	No measurable product	0.00'	-	-	-	no		
1/12/2023	AM	sunny	Galeci	-	N/A		N/A	N/A	N/A	N/A		-	-	none	Yes	yes	yes	No sheen noted	-	-	-	-	-	-	-	-	no		
Weekly inspection done on Wednesday, 1/11																													
Weekend																													

ALCO DAILY MONITORING LOG

1	2	3	4	5	6	7	8	9	10	11	12	13	14	15	16	17	18	19	20	21	22	23	24	25	26	27	28		
GENERAL				ALCO PARCEL A														ALCO PARCEL B										ALCO PARCEL C	
Date	Time	Weather (note precip)	Inspector initials	Blowers and Aerators		Riverbank booms					MW-73		Other		Harbor								DS-1		Other		Any work activity? (injection, groundwater monitoring, construction, etc.)	If yes to column 24, describe the activities performed in Parcel C	
				Freeman's Bridge staff gauge	Blowers and aerators effective?	If no to column 5, describe actions taken to correct	Containment boom effective?	Absorbent boom effective?	Is sheen, if present, fully contained in boom?	Is boomed area free of debris?	If no to columns 7-10, describe actions taken to correct	Depth to NAPL	Depth to GW	General observations (e.g., odors) or follow- up needed	Harbor booms/sweeps secure and in good condition?	Sheen, if present, fully contained in absorbents?	Are boomed areas free of debris?	If no to columns 15-17, describe actions taken to correct	Did absorbent socks in baffles need changed out?	Condition of eastern Harbor wall (e.g., staining on sweep)	Product level in RW-3	Condition of additional wells near RW-3 (RW-3A, RW-3B, and RW-3C)	Product level in MW-3	MW-2 and MW- 3 Purge Amount	Product level (thickness) in OWS	General observations (e.g., odors) or follow- up needed			
1/16/2023	AM	Cloudy	Galesi	-	N/A		N/A	N/A	N/A	N/A		-	-	none	Yes	yes	yes	No sheen noted	-	-	-	-	-	-	-	-	no		
1/17/2023	AM	Cloudy	Galesi	-	N/A		N/A	N/A	N/A	N/A		-	-	none	Yes	yes	yes	No sheen noted	-	-	-	-	-	-	-	-	no		
1/18/2023	AM	Overcast	Galesi	-	N/A		N/A	N/A	N/A	N/A		-	-	none	Yes	yes	yes	No sheen noted	-	-	-	-	-	-	-	-	no		
1/19/2023	AM	Rain	Galesi	-	N/A		N/A	N/A	N/A	N/A		-	-	none	Yes	yes	yes	No sheen noted	-	-	-	-	-	-	-	-	no		
1/20/2023	AM	sunny	B&L	10.63	N/A		N/A	N/A	N/A	N/A		6.40	6.80	-	N/A	No sheen	yes	No sheen noted	0 of 5 socks replaced	Good	0.05'	No measurable product	0.00'	-	-	-	no		
Weekend																													
1/23/2023	AM	snow	Galesi	-	N/A		N/A	N/A	N/A	N/A		-	-	none	Yes	yes	yes	No sheen noted	-	-	-	-	-	-	-	-	no		
1/24/2023	AM	snow	Galesi	-	N/A		N/A	N/A	N/A	N/A		-	-	none	Yes	yes	yes	No sheen noted	-	-	-	-	-	-	-	-	no		
1/25/2023	AM	Overcast	Galesi	-	N/A		N/A	N/A	N/A	N/A		-	-	none	Yes	yes	yes	No sheen noted	-	-	-	-	-	-	-	-	no		
1/26/2023	AM	sunny	B&L	10.8	N/A		N/A	N/A	N/A	N/A		6.19	6.65	-	N/A	No sheen	yes	No sheen noted	0 of 5 socks replaced	Good	0.10'	No measurable product	0.00'	-	-	-	no		
Weekly inspection done on Thursday, 1/26																													
Weekend																													
1/30/2023	AM	Cloudy	Galesi	-	N/A		N/A	N/A	N/A	N/A		-	-	none	Yes	yes	yes	No sheen noted	-	-	-	-	-	-	-	-	no		
1/31/2023	AM	Cloudy	Galesi	-	N/A		N/A	N/A	N/A	N/A		-	-	none	Yes	yes	yes	No sheen noted	-	-	-	-	-	-	-	-	no		
2/1/2023	AM	Cloudy	Galesi	-	N/A		N/A	N/A	N/A	N/A		-	-	none	Yes	yes	yes	No sheen noted	-	-	-	-	-	-	-	-	no		
2/2/2023	AM	Cloudy	Galesi	-	N/A		N/A	N/A	N/A	N/A		-	-	none	Yes	yes	yes	No sheen noted	-	-	-	-	-	-	-	-	no		
2/3/2023	PM	sunny	B&L	10.85	N/A		N/A	N/A	N/A	N/A		-	-	MW-73 SMS not checked due to weather	N/A	No sheen	yes	Harbor frozen. RW-3 wells and DS wells not monitored due to weather.	0 of 5 socks replaced	Good	-	No measurable product	-	-	-	-	no		
Weekend																													
2/6/2023	AM	Cloudy	Galesi	-	N/A		N/A	N/A	N/A	N/A		-	-	none	Yes	yes	yes	No sheen noted	-	-	-	-	-	-	-	-	no		
2/7/2023	AM	Cloudy	Galesi	-	N/A		N/A	N/A	N/A	N/A		-	-	none	Yes	yes	yes	No sheen noted	-	-	-	-	-	-	-	-	no		
2/8/2023	AM	Cloudy	Galesi	-	N/A		N/A	N/A	N/A	N/A		-	-	none	Yes	yes	yes	No sheen noted	-	-	-	-	-	-	-	-	no		
2/9/2023	AM	rain	Galesi	-	N/A		N/A	N/A	N/A	N/A		-	-	none	Yes	yes	yes	No sheen noted	-	-	-	-	-	-	-	-	no		
2/10/2023	AM	Cloudy	B&L	10.31	N/A		N/A	N/A	N/A	N/A		6.72	7.15	-	N/A	No sheen	yes	Harbor frozen	0 of 5 socks replaced	Good	0.05'	No measurable product	0.00'	-	-	-	no		
Weekend																													
2/13/2023	AM	Cloudy	Galesi	-	N/A		N/A	N/A	N/A	N/A		-	-	none	Yes	yes	yes	No sheen noted	-	-	-	-	-	-	-	-	no		
2/14/2023	AM	sunny	Galesi	-	N/A		N/A	N/A	N/A	N/A		-	-	none	Yes	yes	yes	No sheen noted	-	-	-	-	-	-	-	-	no		
2/15/2023	AM	Cloudy	Galesi	-	N/A		N/A	N/A	N/A	N/A		-	-	none	Yes	yes	yes	No sheen noted	-	-	-	-	-	-	-	-	no		
2/16/2023	AM	rain	Galesi	-	N/A		N/A	N/A	N/A	N/A		-	-	none	Yes	yes	yes	No sheen noted	-	-	-	-	-	-	-	-	no		
2/17/2023	AM	rain	B&L	10.91	N/A		N/A	N/A	N/A	N/A		6.07	6.42	-	N/A	No sheen	yes	Harbor frozen	0 of 5 socks replaced	Good	0.05'	No measurable product	0.00'	-	-	-	no		
Weekend																													
2/20/2023	AM	sunny	Galesi	-	N/A		N/A	N/A	N/A	N/A		-	-	none	Yes	yes	yes	No sheen noted	-	-	-	-	-	-	-	-	no		
2/21/2023	AM	cloudy	Galesi	-	N/A		N/A	N/A	N/A	N/A		-	-	none	Yes	yes	yes	No sheen noted	-	-	-	-	-	-	-	-	no		
2/22/2023	AM	Cloudy	Galesi	-	N/A		N/A	N/A	N/A	N/A		-	-	none	Yes	yes	yes	No sheen noted	-	-	-	-	-	-	-	-	no		
2/23/2023	AM	snow	Galesi	-	N/A		N/A	N/A	N/A	N/A		-	-	none	Yes	yes	yes	No sheen noted	-	-	-	-	-	-	-	-	no		
2/24/2023	PM	Cloudy	B&L	10.1	N/A		N/A	N/A	N/A	N/A		-	-	-	N/A	No sheen	yes	Harbor frozen	0 of 5 socks replaced	Good	N/A	RW-3 and 3A, 3B, 3C frozen. Unable to monitor	0.00'	-	-	-	no		
Weekend																													

Barton & Loguidice

ALCO DAILY MONITORING LOG

1	2	3	4	5	6	7	8	9	10	11	12	13	14	15	16	17	18	19	20	21	22	22	23	24	25	26	27	28	
GENERAL				ALCO PARCEL A														ALCO PARCEL B										ALCO PARCEL C	
				Blowers and Aerators			Riverbank booms					MW-73		Other	Harbor									DS-1		Other			
Date	Time	Weather (note precip)	Inspector initials	Freeman's Bridge staff gauge	Blowers and aerators effective?	If no to column 5, describe actions taken to correct	Containment boom effective?	Absorbent boom effective?	Is sheen, if present, fully contained in boom?	Is boomed area free of debris?	If no to columns 7-10, describe actions taken to correct	Depth to NAP	Depth to GW	General observations (e.g., odors) or follow-up needed	Harbor booms/sweeps secure and in good condition?	Sheen, if present, fully contained in absorbents?	Are boomed areas free of debris?	If no to columns 15-17, describe actions taken to correct	Did absorbent socks in baffles need changed out?	Condition of eastern Harbor wall (e.g., staining on sweep)	Product level in RW-3	Condition of additional wells near RW-3 (RW-3A, RW-3B, and RW-3C)	Product level in MW-3	MW-2 and MW-3 Purge Amount	Product level (thickness) in OWS	General observations (e.g., odors) or follow-up needed	Any work activity? (injections, groundwater monitoring, construction, etc.)	If yes to column 24, describe the activities performed in Parcel C	
2/27/2023	AM	cloudy	Galesi	-	N/A		N/A	N/A	N/A	N/A		-	-	none	Yes	yes	yes	No sheen noted	-	-	-	-	-	-	-	-	-	no	
2/28/2023	AM	snow	Galesi	-	N/A		N/A	N/A	N/A	N/A		-	-	none	Yes	yes	yes	No sheen noted	-	-	-	-	-	-	-	-	-	no	
3/1/2023	AM	Cloudy	Galesi	-	N/A		N/A	N/A	N/A	N/A		-	-	none	Yes	yes	yes	No sheen noted	-	-	-	-	-	-	-	-	-	no	
3/2/2023	AM	clear	Galesi	-	N/A		N/A	N/A	N/A	N/A		-	-	none	Yes	yes	yes	No sheen noted	-	-	-	-	-	-	-	-	-	no	
3/3/2023	AM	Clear	B&L	10.08	N/A		N/A	N/A	N/A	N/A		7.02	7.34	-	N/A	No sheen	yes	Harbor frozen	0 of 5 socks replaced	Good	N/A	RW-3 and 3A, 3B, 3C frozen. Unable to monitor	0.00'	-	-	-	-	no	
Weekend																													
3/6/2023	AM	cloudy	Galesi	-	N/A		N/A	N/A	N/A	N/A		-	-	none	Yes	yes	yes	No sheen noted	-	-	-	-	-	-	-	-	-	no	
3/7/2023	AM	cloudy	Galesi	-	N/A		N/A	N/A	N/A	N/A		-	-	none	Yes	yes	yes	No sheen noted	-	-	-	-	-	-	-	-	-	no	
3/8/2023	AM	Cloudy	Galesi	-	N/A		N/A	N/A	N/A	N/A		-	-	none	Yes	yes	yes	No sheen noted	-	-	-	-	-	-	-	-	-	no	
3/9/2023	AM	clear	Galesi	-	N/A		N/A	N/A	N/A	N/A		-	-	none	Yes	yes	yes	No sheen noted	-	-	-	-	-	-	-	-	-	no	
3/10/2023	PM	Clear	B&L	10.01	N/A		N/A	N/A	N/A	N/A		6.88	7.4	-	N/A	No sheen	yes	Harbor frozen	0 of 5 socks replaced	Good	0.37'	No measurable product	0.00'	-	-	-	-	no	
Weekend																													
3/13/2023	AM	cloudy	Galesi	-	N/A		N/A	N/A	N/A	N/A		-	-	none	Yes	yes	yes	No sheen noted	-	-	-	-	-	-	-	-	-	no	
3/14/2023	AM	Snow	Galesi	-	N/A		N/A	N/A	N/A	N/A		-	-	none	Yes	yes	yes	No sheen noted	-	-	-	-	-	-	-	-	-	no	
3/15/2023	AM	Cloudy	Galesi	-	N/A		N/A	N/A	N/A	N/A		-	-	none	Yes	yes	yes	No sheen noted	-	-	-	-	-	-	-	-	-	no	
3/16/2023	AM	clear	Galesi	-	N/A		N/A	N/A	N/A	N/A		-	-	none	Yes	yes	yes	No sheen noted	-	-	-	-	-	-	-	-	-	no	
3/17/2023	AM	Cloudy	B&L	10.27	N/A		N/A	N/A	N/A	N/A		6.71	7.4	-	N/A	No sheen	yes	Harbor frozen	0 of 5 socks replaced	Good	0.30'	No measurable product	0.00'	-	-	-	-	no	
Weekend																													
3/20/2023	AM	clear	Galesi	-	N/A		N/A	N/A	N/A	N/A		-	-	none	Yes	yes	yes	No sheen noted	-	-	-	-	-	-	-	-	-	no	
3/21/2023	AM	clear	Galesi	-	N/A		N/A	N/A	N/A	N/A		-	-	none	Yes	yes	yes	No sheen noted	-	-	-	-	-	-	-	-	-	no	
3/22/2023	AM	clear	Galesi	-	N/A		N/A	N/A	N/A	N/A		-	-	none	Yes	yes	yes	No sheen noted	-	-	-	-	-	-	-	-	-	no	
3/23/2023	AM	cloudy	Galesi	-	N/A		N/A	N/A	N/A	N/A		-	-	none	Yes	yes	yes	No sheen noted	-	-	-	-	-	-	-	-	-	no	
3/24/2023	AM	Cloudy	B&L	14.42	N/A		N/A	N/A	N/A	N/A		2.89	3.68	-	N/A	yes	yes	Harbor frozen	0 of 5 socks replaced	Good	0.12'	No measurable product	0.00'	-	-	-	-	no	
Weekend																													
3/27/2023	AM	cloudy	Galesi	-	N/A		N/A	N/A	N/A	N/A		-	-	none	Yes	yes	yes	No sheen noted	-	-	-	-	-	-	-	-	-	no	
3/28/2023	AM	cloudy	Galesi	-	N/A		N/A	N/A	N/A	N/A		-	-	none	Yes	yes	yes	No sheen noted	-	-	-	-	-	-	-	-	-	no	
3/29/2023	AM	clear	Galesi	-	N/A		N/A	N/A	N/A	N/A		-	-	none	Yes	yes	yes	No sheen noted	-	-	-	-	-	-	-	-	-	yes	01 groundwater monitoring
3/30/2023	AM	clear	Galesi	-	N/A		N/A	N/A	N/A	N/A		-	-	none	Yes	yes	yes	No sheen noted	-	-	-	-	-	-	-	-	-	yes	01 groundwater monitoring
3/31/2023	AM	clear	B&L	11.49	N/A		N/A	N/A	N/A	N/A	PIM installing absorbent boom along river bank	5.44	6.11	-	Yes	yes	yes	PIM replacing harbor boom and sweep along East Harbor Wall. Sheen contained.	0 of 5 socks replaced	Good	0.16'	No measurable product	0.00'	-	-	-	-	no	
Weekend																													
4/3/2023	AM	cloudy	Galesi	-	N/A		N/A	N/A	N/A	N/A		-	-	none	Yes	yes	yes	No sheen noted	-	-	-	-	-	-	-	-	-	no	
4/4/2023	AM	cloudy	Galesi	-	N/A		N/A	N/A	N/A	N/A		-	-	none	Yes	yes	yes	No sheen noted	-	-	-	-	-	-	-	-	-	no	
4/5/2023	AM	Rain	Galesi	-	N/A		N/A	N/A	N/A	N/A		-	-	none	Yes	yes	yes	No sheen noted	-	-	-	-	-	-	-	-	-	no	
4/6/2023	AM	cloudy	Galesi	-	N/A		N/A	N/A	N/A	N/A		-	-	none	Yes	yes	yes	No sheen noted	-	-	-	-	-	-	-	-	-	no	
4/7/2023	AM	Partly Cloudy	B&L	13.71	N/A		N/A	N/A	N/A	N/A	Boom washed away	2.9	3	-	Yes	yes	yes	sheen contained	0 of 5 socks replaced	Good	0.05'	No measurable product	0.00'	-	-	-	-	no	
Weekend																													

Barton & Loguidice				ALCO DAILY MONITORING LOG																									
1	2	3	4	5	6	7	8	9	10	11	12	13	14	15	16	17	18	19	20	21	22	23	24	25	26	27	28		
GENERAL				ALCO PARCEL A														ALCO PARCEL B										ALCO PARCEL C	
Date	Time	Weather (note precip)	Inspector initials	Freeman's Bridge staff gauge	Blowers and Aerators		Riverbank booms					MW-73		Other	Harbor								DS-1		Other		Any work activity? (injections, groundwater monitoring, construction, etc.)	If yes to column 24, describe the activities performed in Parcel C	
					If no to column 5, describe actions taken to correct	Containment boom effective?	Absorbent boom effective?	Is sheen, if present, fully contained in boom?	Is boomed area free of debris?	If no to columns 7-10, describe actions taken to correct	Depth to NAPL	Depth to GW	General observations (e.g., odors) or follow- up needed		Harbor booms/sweeps secure and in good condition?	Sheen, if present, fully contained in absorbents?	Are boomed areas free of debris?	If no to columns 15-17, describe actions taken to correct	Did absorbent socks in baffles need changed out?	Condition of eastern Harbor wall (e.g., staining on sweeps)	Product level in RW-3	Condition of additional wells near RW-3 (RW-3A, RW-3B, and RW-3C)	Product level in MW-3	MW-2 and MW- 3 Purge Amount	Product level (thickness) in OWS	General observations (e.g., odors) or follow- up needed			
4/10/2023	AM	clear	Galesi	-	N/A		N/A	yes	yes	yes		-	-	none	Yes	yes	yes	sheen contained	-	-	-	-	-	-	-	-	no		
4/11/2023	AM	clear	Galesi	-	N/A		N/A	yes	yes	yes		-	-	none	Yes	yes	yes	sheen contained	-	-	-	-	-	-	-	-	no		
4/12/2023	AM	clear	Galesi	-	N/A		N/A	yes	yes	yes		-	-	none	Yes	yes	yes	sheen contained	-	-	-	-	-	-	-	-	no		
4/13/2023	AM	clear	Galesi	-	N/A		N/A	yes	yes	yes		-	-	none	Yes	yes	yes	sheen contained	-	-	-	-	-	-	-	-	no		
4/14/2023	AM	clear	B&L	10.43	N/A		N/A	yes	yes	yes		6.50	6.58	-	Yes	yes	yes	sheen contained	0 of 5 socks replaced	Good	0.22'	No measurable product	0.00'	-	-	-	no		
Weekend																													
4/17/2023	AM	Rain	Galesi	-	N/A		N/A	yes	yes	yes		-	-	none	Yes	yes	yes	sheen contained	-	-	-	-	-	-	-	-	no		
4/18/2023	AM	Cloudy	Galesi	-	N/A		N/A	yes	yes	yes		-	-	none	Yes	yes	yes	sheen contained	-	-	-	-	-	-	-	-	no		
4/19/2023	AM	clear	Galesi	-	N/A		N/A	yes	yes	yes		-	-	none	Yes	yes	yes	sheen contained	-	-	-	-	-	-	-	-	no		
4/20/2023	AM	clear	Galesi	-	N/A		N/A	yes	yes	yes		-	-	none	Yes	yes	yes	sheen contained	-	-	-	-	-	-	-	-	no		
4/21/2023	PM	clear	B&L	10.01	N/A		N/A	yes	yes	yes		6.96	7.01	-	Yes	yes	yes	sheen contained	0 of 5 socks replaced	Good	0.30'	No measurable product	0.00'	-	-	-	no		

*The experience to*  
**listen**  
*The power to*  
**solve**<sup>SM</sup>

**Barton**  
**&Loguidice**

[www.bartonandloguidice.com](http://www.bartonandloguidice.com)