



Department of  
Environmental  
Conservation

# FACT SHEET

## Brownfield Cleanup Program

SMC-Brownfield Site

4317 Middle Settlement Rd  
New Hartford, NY 13413

**SITE No. C633016**

**NYSDEC REGION 6**

**July 2018**

## Environmental Cleanup to Begin at Brownfield Site

### Where to Find Information:

*Project documents are available at these location(s) to help the public stay informed.*

#### **New Hartford Public Library**

2 Library Lane  
New Hartford, NY 13413  
(315) 733-1535

### Who to Contact:

*Comments and questions are always welcome and should be directed as follows:*

#### **Project-Related Questions**

William Bennett, Project Manager  
NYSDEC  
625 Broadway, 11<sup>th</sup> Floor  
Albany, NY 12233-7014  
(518) 402-9659  
[william.bennett@dec.ny.gov](mailto:william.bennett@dec.ny.gov)

#### **Health-Related Questions**

Scarlett McLaughlin  
NYSDOH  
Empire State Plaza  
Corning Tower, Room 1787  
Albany, NY 12237  
(518) 402-7860  
[bee@health.ny.gov](mailto:bee@health.ny.gov)

**For more information about New York's  
Brownfield Cleanup Program, visit:**  
[www.dec.ny.gov/chemical/8450.html](http://www.dec.ny.gov/chemical/8450.html)

Action is about to begin that will address contamination related to the SMC-Brownfield Site ("site") located at 4317 Middle Settlement Rd, New Hartford, Oneida County. Please see the map for the site location. The cleanup activities will be performed by Special Metals Corporation (SMC) ("applicant(s)") with oversight provided by the New York State Department of Environmental Conservation (NYSDEC). NYSDEC has approved the Remedial Work Plan (RWP) and determined it protects public health and the environment. The approved RWP and other documents related to the cleanup of this site can be found at the location(s) identified to the left under *Where to Find Information*. Remedial activities are expected to begin in July 2018 and last about 5 months.

**Highlights of the Upcoming Cleanup Activities:** The goal of the cleanup action for the site is to achieve cleanup levels that protect public health and the environment. The key components of the remedy are:

- On-site upland (i.e., non-wetland or floodplain) soils will be remediated to industrial soil cleanup objectives (SCOs) and applicable protection of groundwater SCOs in accessible areas. Soil exceeding applicable SCOs in upland areas will be excavated and disposed of off-site at a permitted facility.
- A site cover will be established on-site to allow for industrial use of the site. The cover will consist either of structures such as buildings, pavement, and sidewalks comprising the site development or one foot of soil cover. Site grading and sediment traps will be incorporated into the site cover to prevent transport of soils by runoff off-site into Mud Creek, the Mud Creek floodplain, and wetlands.
- Off-site upland soils will be remediated to use-based SCOs by excavation and off-site disposal. Off-site residential properties will be remediated to residential SCOs.
- On-site and off-site soils exceeding restricted-residential SCOs and on-site and off-site sediment exceeding the Class C sediment guidance value of 1 part per million (ppm) for polychlorinated biphenyls (PCBs) in the Mud Creek corridor (Mud Creek, Mud Creek floodplain, southern on-site drainage ditches, and wetland) will be excavated and disposed of off-site at a permitted facility. The ecological habitat of the Mud Creek corridor will be restored in-kind.
- Imposition of institutional controls and a Site Management Plan. The Site Management Plan will include operation and maintenance of the on-site treatment system, long-term groundwater monitoring, vapor intrusion monitoring and mitigation as necessary, site cover and sediment trap monitoring and maintenance, and off-site restoration monitoring and maintenance.

A site-specific health and safety plan (HASP) and a Community Air Monitoring Plan (CAMP) will be implemented during remediation activities. The HASP and CAMP establish procedures to protect on-site workers and residents and includes required air monitoring as well as dust and odor suppression measures.

# BROWNFIELD CLEANUP PROGRAM

**Next Steps:** After the applicant(s) completes the cleanup activities, they will prepare a Final Engineering Report (FER) and submit it to NYSDEC. The FER will describe the cleanup activities completed and certify that cleanup requirements have been achieved or will be achieved.

When NYSDEC is satisfied that cleanup requirements have been achieved or will be achieved for the site, it will approve the FER. NYSDEC will then issue a Certificate of Completion to the applicant(s). The applicant(s) would be able to redevelop the site in conjunction with receiving a Certificate of Completion. In addition, the applicant(s):

- would have no liability to the State for contamination at or coming from the site, subject to certain conditions; and
- would be eligible for tax credits to offset the costs of performing cleanup activities and for redevelopment of the site.

NYSDEC will issue a fact sheet that describes the FER content. The fact sheet will identify any institutional controls (for example, deed restrictions) or engineering controls (for example, a site cap) necessary at the site in relation to the issuance of the Certificate of Completion.

**Site Description:** The Special Metals Site is located at 4317 Middle Settlement Road, New Hartford, Oneida County, New York. The 76.8-acre brownfield cleanup site is part of a larger parcel owned by Special Metals Corporation (SMC). The site contains an active industrial facility with several large structures including an office area, the main plant, the rolling plant, and the pilot plant, as well as several other ancillary structures. Prior to SMC developing the property in 1958, the site was undeveloped. Since the facility was constructed, SMC has produced and is currently producing specialty metals most notably for the aircraft industry.

Additional site details, including environmental and health assessment summaries, are available on NYSDEC's Environmental Site Remediation Database (by entering the Site ID, C633016) at:

<http://www.dec.ny.gov/cfm/externalapps/derexternal/index.cfm?pageid=3>

**Brownfield Cleanup Program Overview:** New York's Brownfield Cleanup Program (BCP) encourages the voluntary cleanup of contaminated properties known as "brownfields" so that they can be reused and redeveloped. These uses include recreation, housing, business or other uses. A brownfield site is any real property where a contaminant is present at levels exceeding the soil cleanup objectives or other health-based or environmental standards, criteria or guidance adopted by DEC that are applicable based on the reasonably anticipated use of the property, in accordance with applicable regulations.

For more information about the BCP, visit:

<http://www.dec.ny.gov/chemical/8450.html>

*We encourage you to share this fact sheet with neighbors and tenants, and/or post this fact sheet in a prominent area of your building for others to see.*

## Receive Site Fact Sheets by Email

Have site information such as this fact sheet sent right to your email inbox. NYSDEC invites you to sign up with one or more contaminated sites county email listservs at:

[www.dec.ny.gov/chemical/61092.html](http://www.dec.ny.gov/chemical/61092.html)

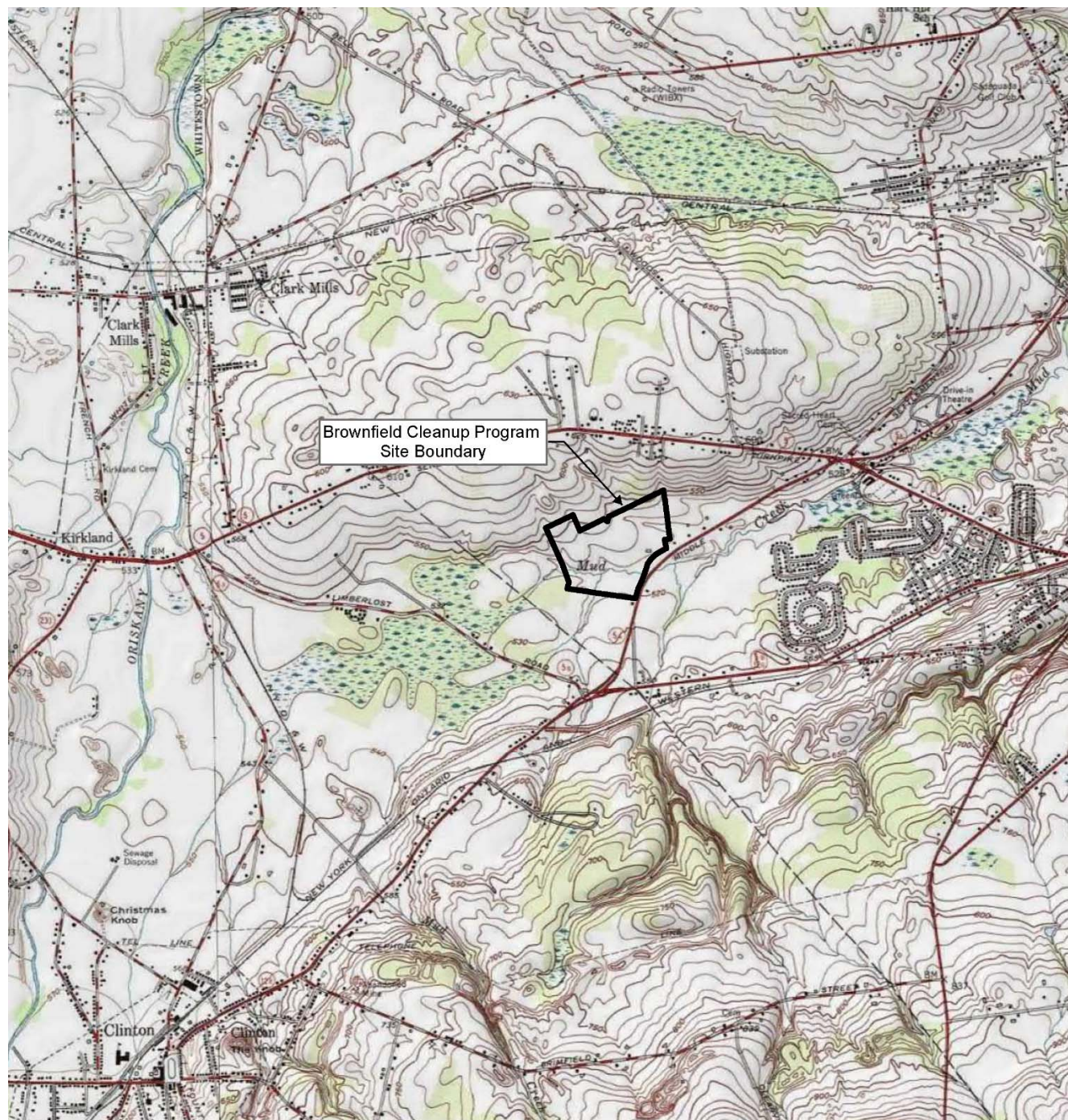
It's quick, it's free, and it will help keep you better informed. As a listserv member, you will periodically receive site-related information/announcements for all contaminated sites in the county(ies) you select.

Note: Please disregard if you have already signed up and received this fact sheet electronically.



# BROWNFIELD CLEANUP PROGRAM

Figure 1 – Site Location



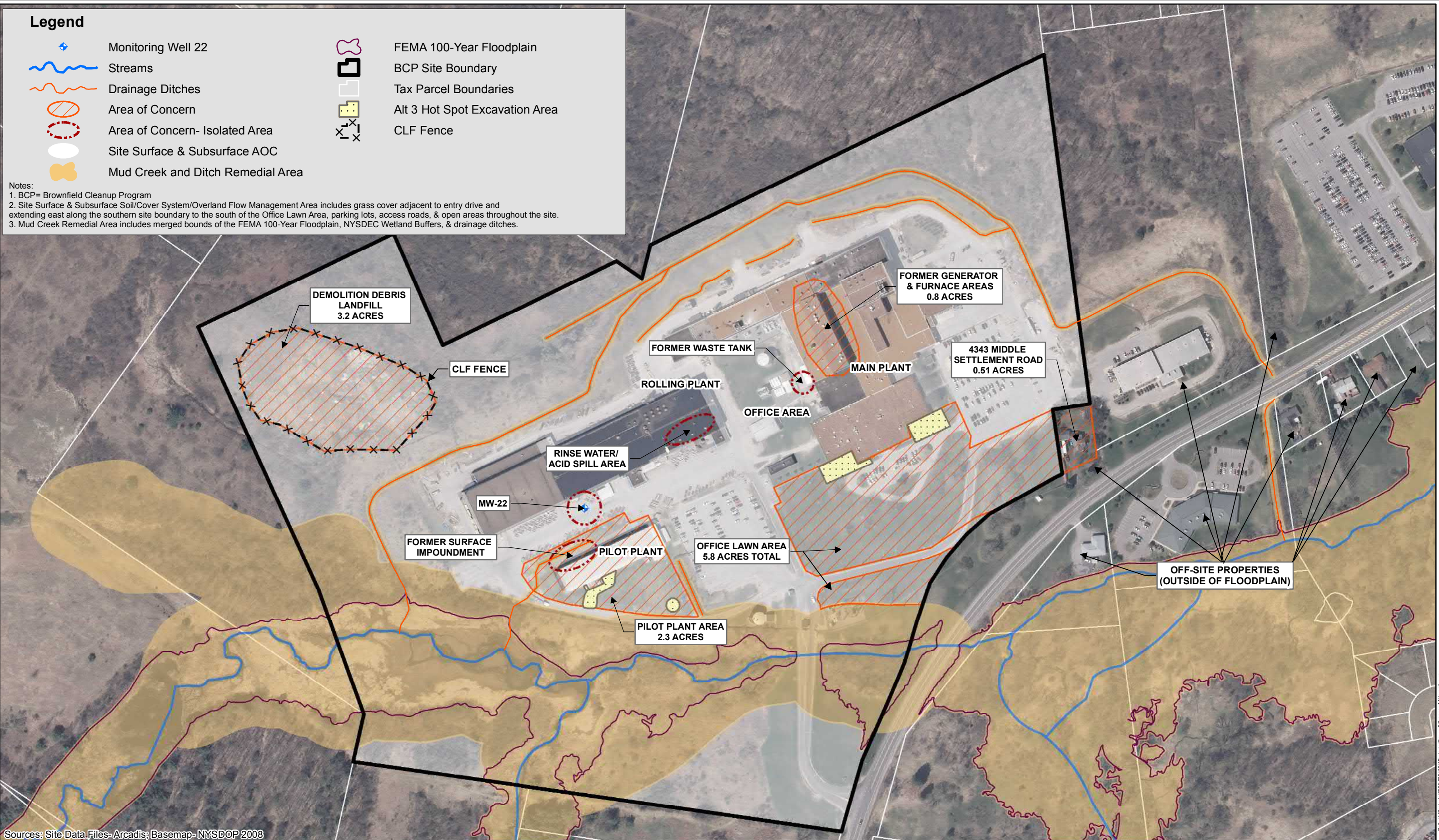


Legend

- Monitoring Well 22
- Streams
- Drainage Ditches
- Area of Concern
- Area of Concern- Isolated Area
- Site Surface & Subsurface AOC
- Mud Creek and Ditch Remedial Area

- FEMA 100-Year Floodplain
- BCP Site Boundary
- Tax Parcel Boundaries
- Alt 3 Hot Spot Excavation Area
- CLF Fence

Notes:  
1. BCP= Brownfield Cleanup Program  
2. Site Surface & Subsurface Soil/Cover System/Overland Flow Management Area includes grass cover adjacent to entry drive and extending east along the southern site boundary to the south of the Office Lawn Area, parking lots, access roads, & open areas throughout the site.  
3. Mud Creek Remedial Area includes merged bounds of the FEMA 100-Year Floodplain, NYSDEC Wetland Buffers, & drainage ditches.



Sources: Site Data Files- Arcadis; Basemap- NYSDOP 2008



1 inch = 250 feet