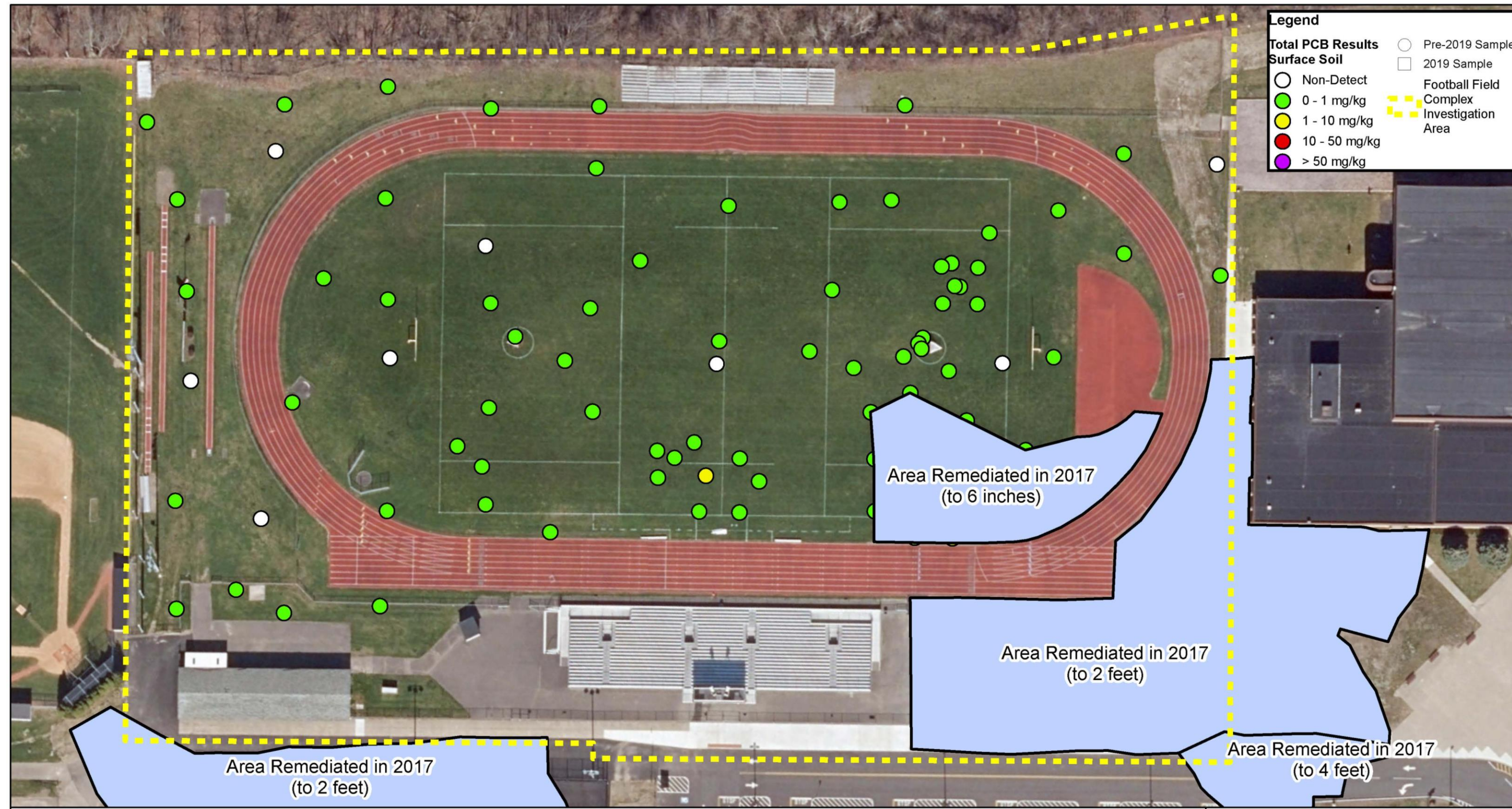
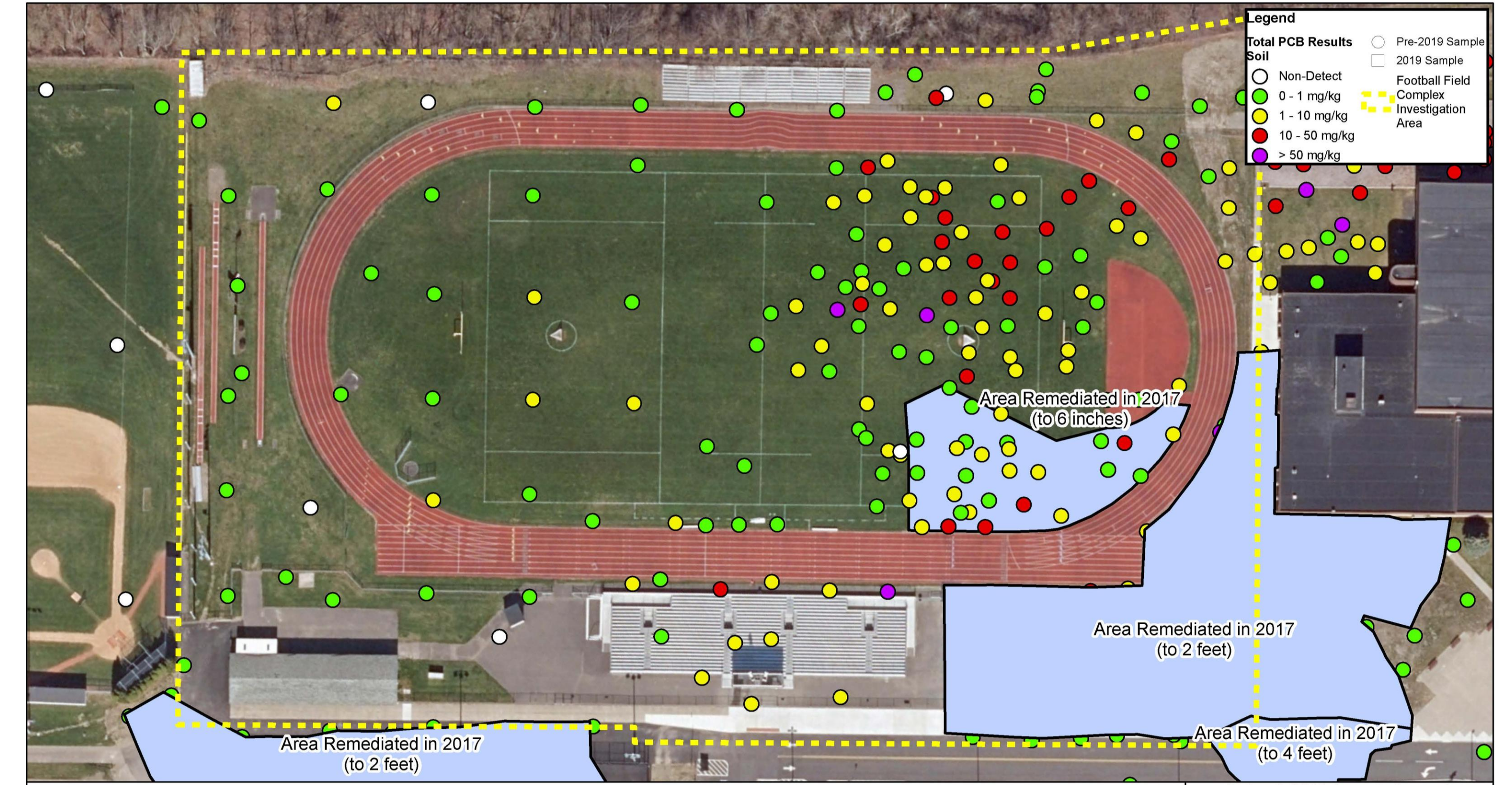


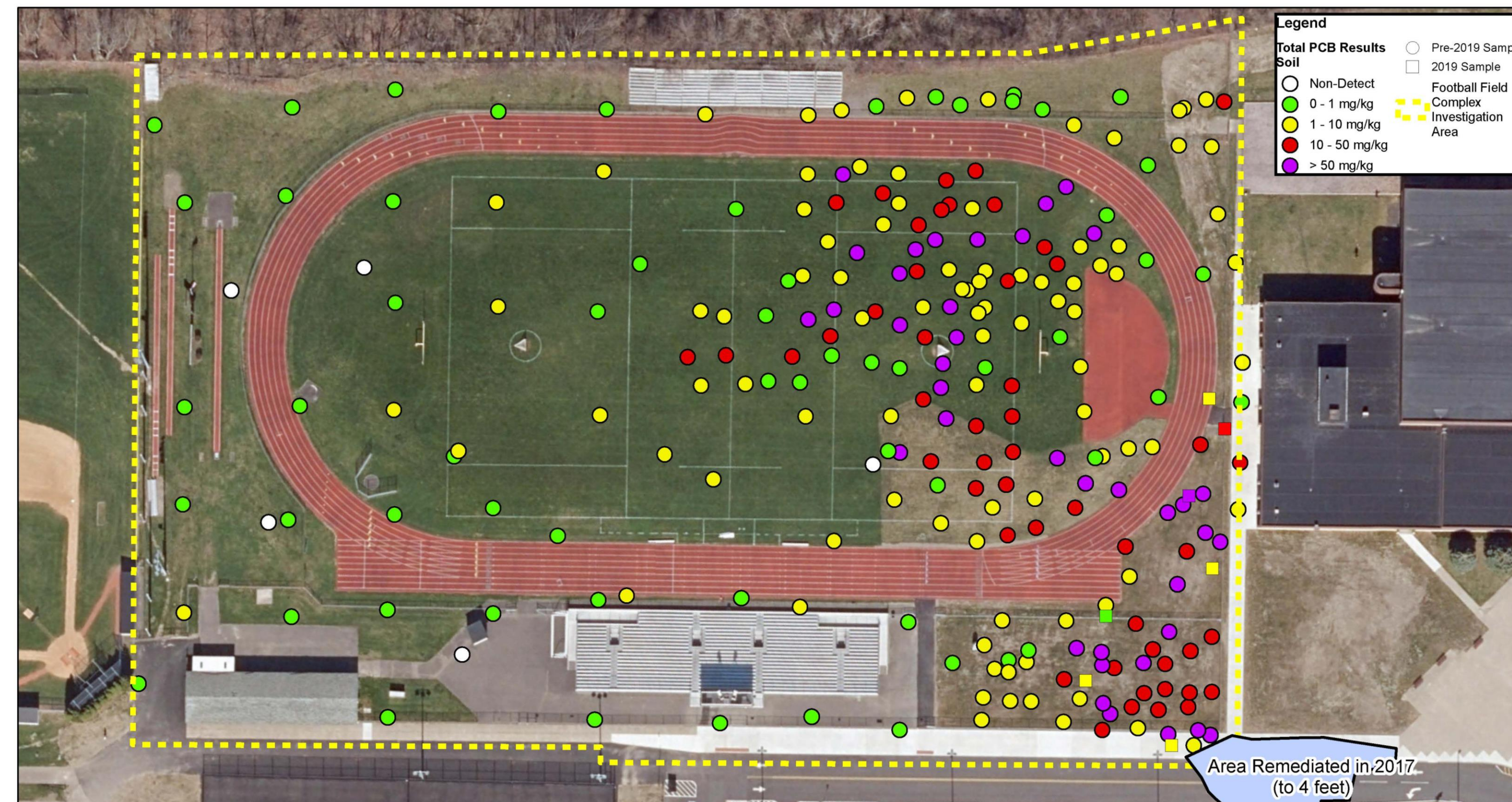
Football Field Investigation



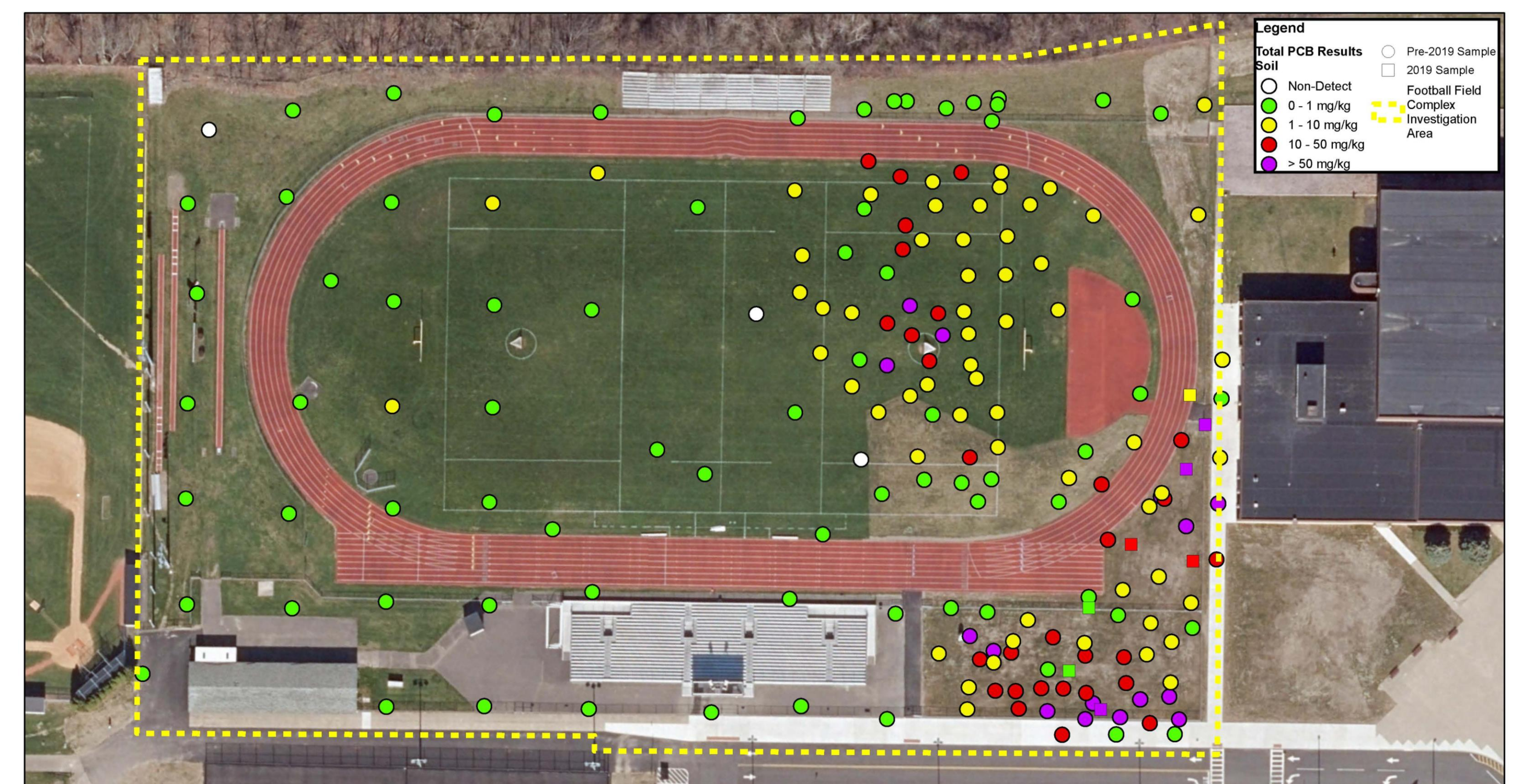
PCBs in Surface Soil: 0 to 2 inches below ground surface



PCBs in Shallow Subsurface Soil: 0.17 to 2 feet below ground surface

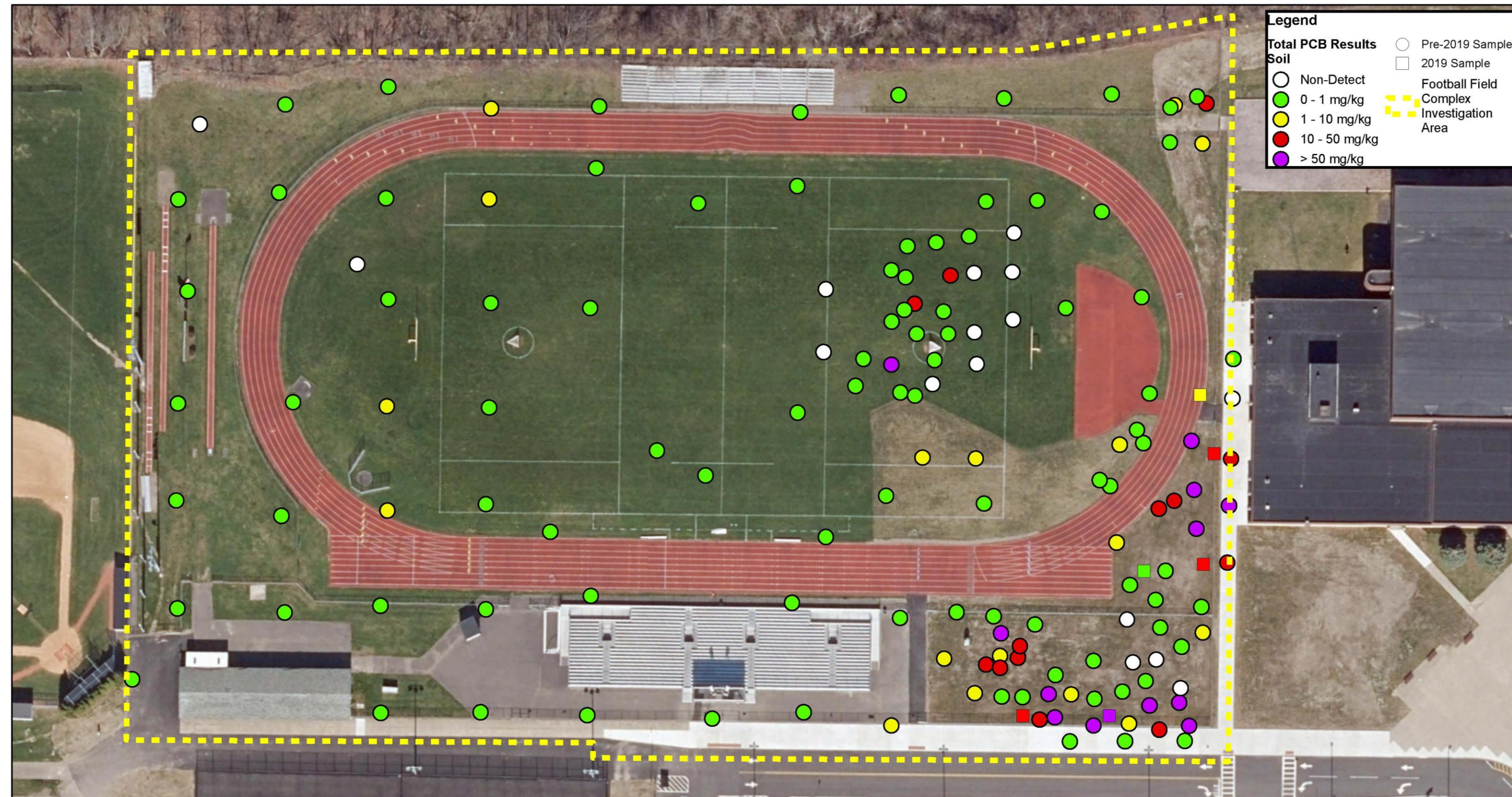


PCBs in Subsurface Soil: 2 to 4 feet below ground surface



PCBs in Subsurface Soil: 4 to 6 feet below ground surface

Football Field Investigation



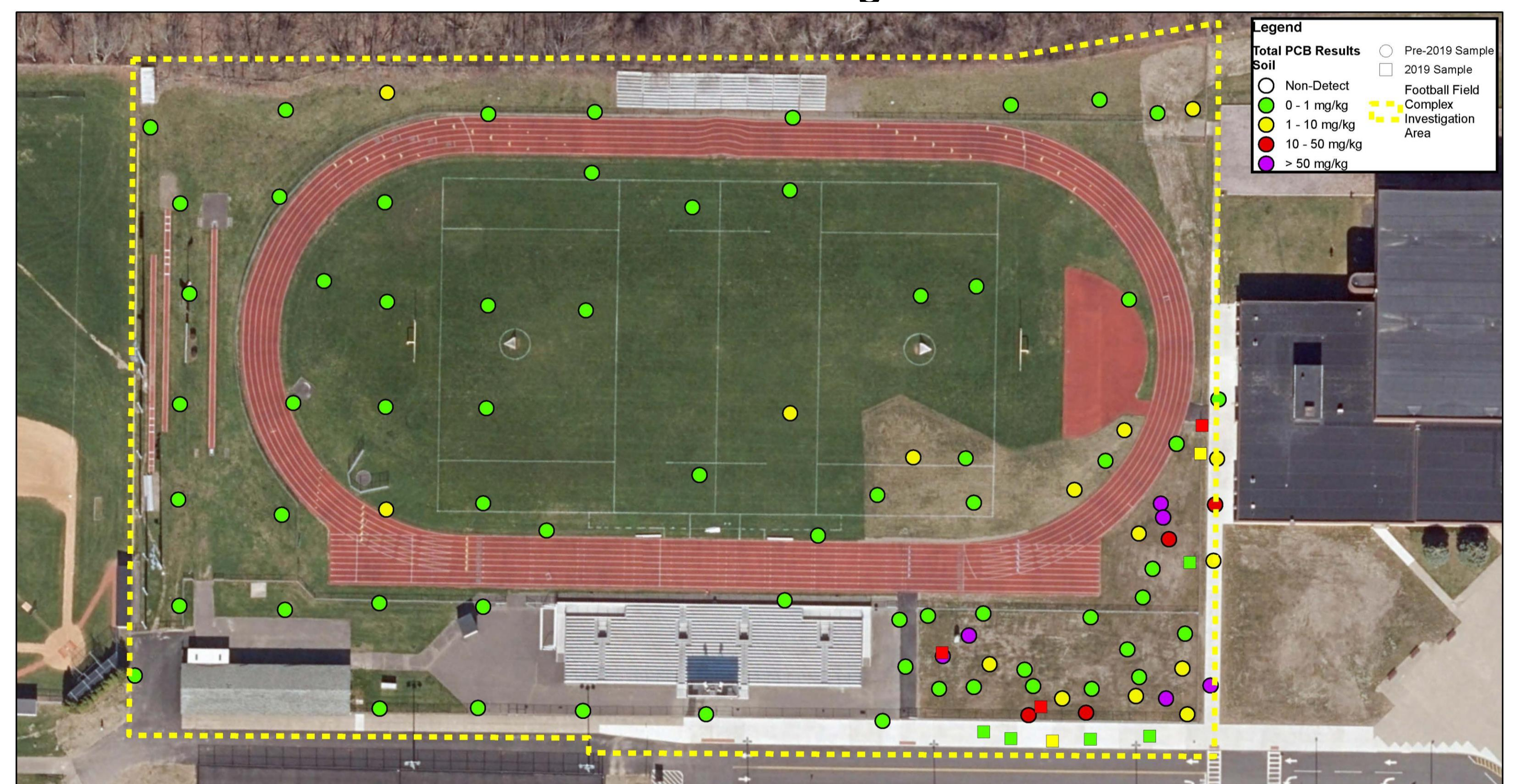
PCBs in Subsurface Soil: 6 to 8 feet below ground surface



PCBs in Subsurface Soil: 8 to 10 feet below ground surface



PCBs in Subsurface Soil: 10 to 12 feet below ground surface



PCBs in Subsurface Soil: 12 to 14 feet below ground surface

**1,314 Soil Samples Collected Across 533 Locations
217 Samples/150 Locations in 2019 Alone**