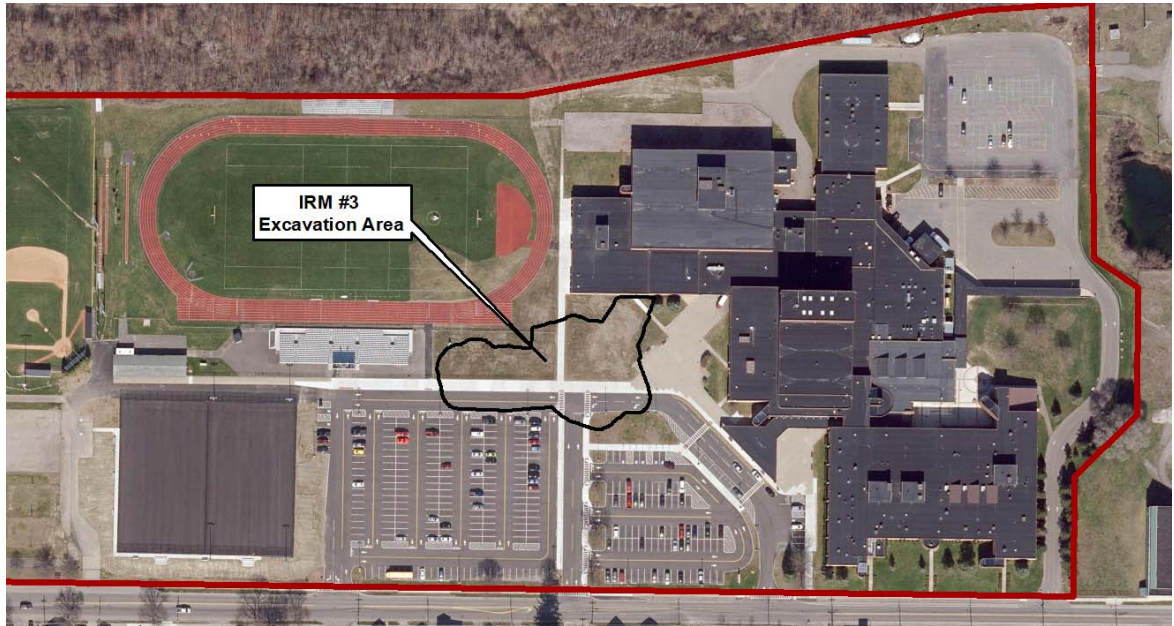
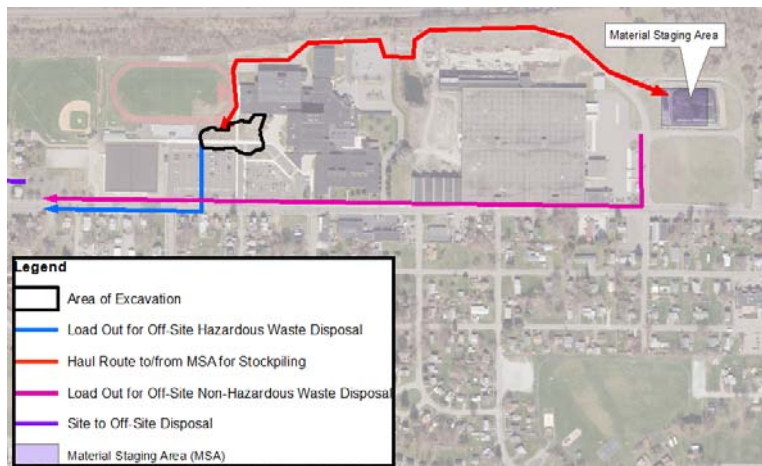


Elmira High School IRM #3 Construction Overview



IRM Area of Excavation

Truck Routes



Anticipated Excavation Volumes:

- Total Excavation: Approximately 12,600 cubic yards
- Hazardous Waste: 2,800 cubic yards (~5,300 ton)
- Non-Hazardous Waste: 3,200 cubic yards (~6,100 ton)
- Excavated soil potentially available for re-use at depth, pending testing and NYSDEC approval: 6,600 cubic yards

Dust Monitoring

- Monitors placed at site perimeter and Material Staging Area
- Monitors placed upwind and downwind of excavation activities



Dust Monitoring

Ambient Air Monitoring

- Monitors placed at air intakes on top of EHS building
- Additional monitors upwind and downwind of excavation activities



Ambient Air Monitoring

Slide 1

PB1 Hi res photos to be swapped out.
Paul Brookner, 6/12/2019