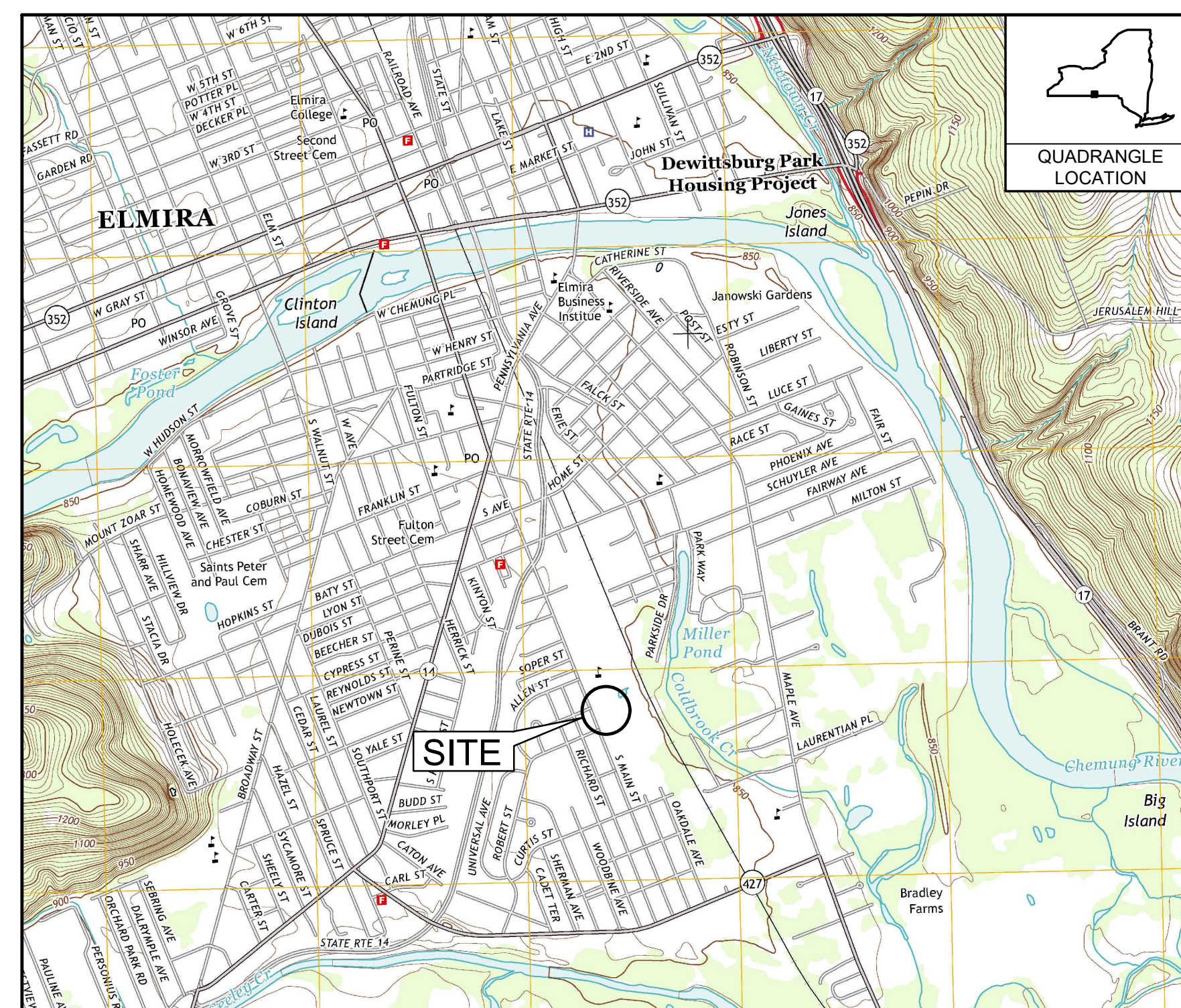


INTERIM REMEDIATION MEASURE #5

AMENDMENT #1 FORMER SPERRY-REMINGTON SITE - NORTH PORTION ELMIRA, NEW YORK

JANUARY 2021



SOURCE: "ELMIRA, NEW YORK" USGS 7.5' QUADRANGLE, 2013

SCALE: 1" = 2000'

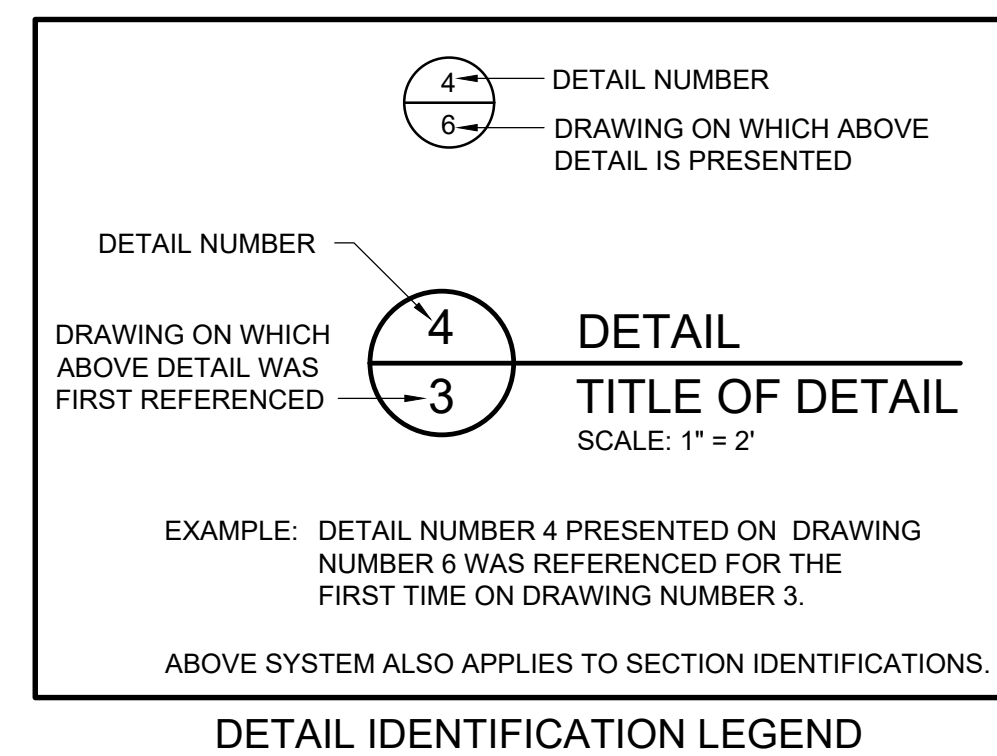
LOCATION MAP



LIST OF DRAWINGS	
SHEET NUMBER	SHEET TITLE
1	COVER SHEET
2	GRADING PLAN
3	CONTROL POINT TABLES
4	FORMER INDUSTRIAL SEWER REMOVAL PLAN
5	0-2 FT EXCAVATION
6	2-4 FT EXCAVATION
7	4-6 FT EXCAVATION
8	INTERMEDIATE GRADING PLAN
9	PROPOSED RESTORATION PLAN

PREPARED FOR: **UNISYS CORPORATION**
CORPORATE ENVIRONMENTAL AFFAIRS
3199 PILOT KNOB ROAD MS F1B05
EAGAN, MN 55121

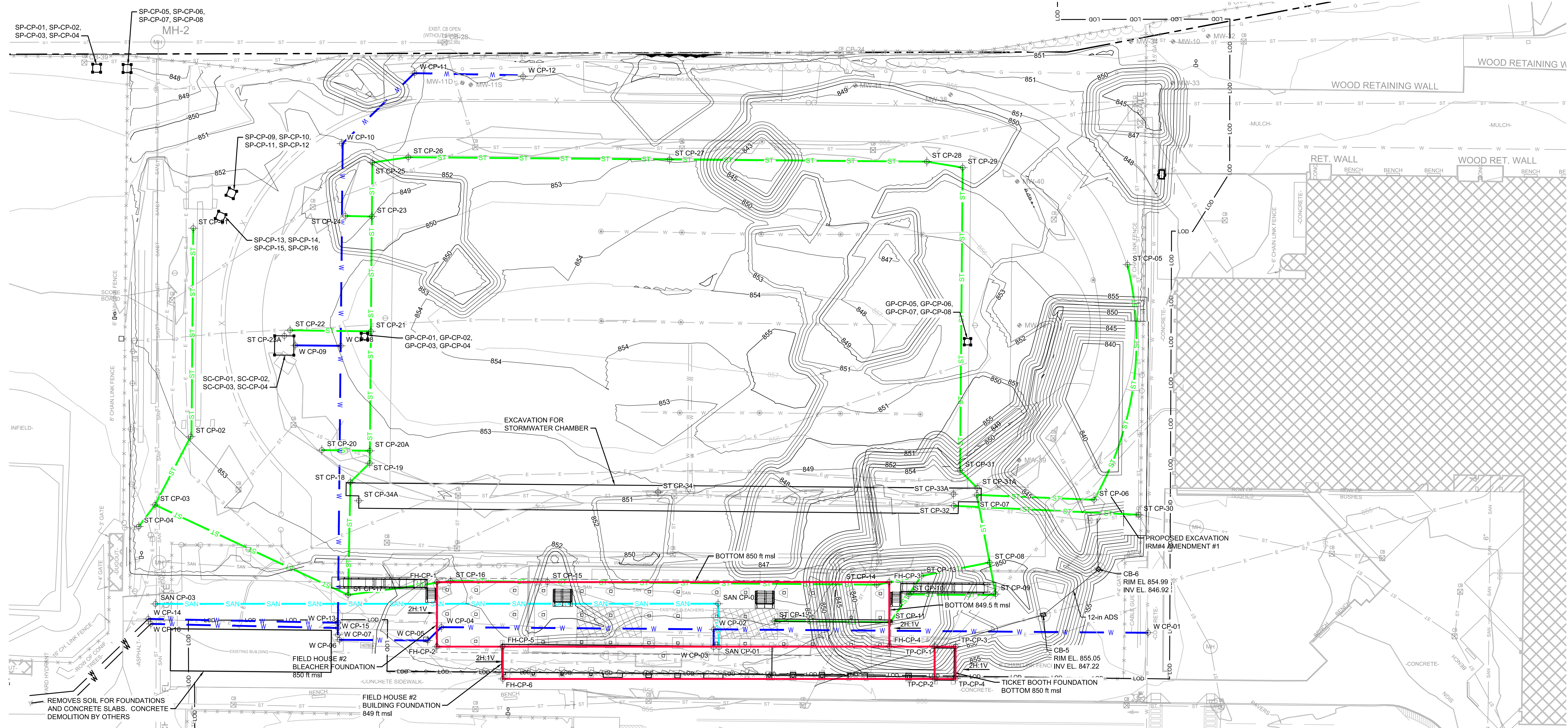
PREPARED BY: **B&B Engineers & Geologists**
of new york, p.c.
an affiliate of Geosyntec Consultants

10211 WINCOPIN CIRCLE, FLOOR 4
COLUMBIA, MD 20144
PHONE: (410) 381-4333



REV	DATE	DESCRIPTION	DRN	APP
 				
TITLE: COVER SHEET				
PROJECT: INTERIM REMEDIATION MEASURE #5				
SITE: FORMER SPERRY-REMINGTON SITE - NORTH PORTION ELMIRA, NEW YORK				
DESIGN BY: AK		DATE: JANUARY 2021		
DRAWN BY: BGF		PROJECT NO.: MN08321		
CHECKED BY: KTO		FILE: MN08321-501-UTILITY		
REVIEWED BY: PLB		DRAWING NO.:		
APPROVED BY: AK		1 OF 9		

CONSTRUCTION DRAWING



LEGEND

	MANHOLE
	CATCH BASIN
	CHAIN LINK FENCE
	WOODEN FENCE
	EXISTING CONTOUR LINE
	BURIED ELECTRIC CABLE
	SANITARY SEWER
	STORM SEWER
	NATURAL GAS LINE
	WATER LINE
	FOUNDATION
	EXCAVATION GRADING (FT MSL)
	LIMIT OF DISTURBANCE / TEMPORARY FENCE

3 PLAN GRADING PLAN



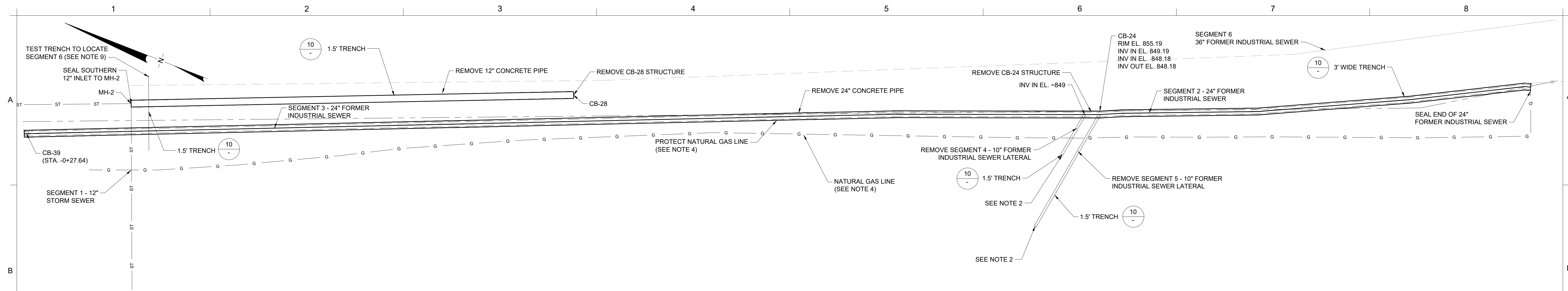
- NOTES:**
- SEE SECTION 02 61 13 FOR REQUIREMENTS REGARDING EXCAVATION.
 - ALL VEHICLES LEAVING THE EXCAVATION AREA SHALL ONLY USE THE ESTABLISHED TEMPORARY ACCESS ROAD OR ROADWAY TO ENTER THE EQUIPMENT WASH PAD. WASH-DOWN OF ALL VEHICLE TIRES/UNDERCARRIAGE SHALL BE PERFORMED PRIOR TO VEHICLES LEAVING THE SITE.
 - DOCUMENTATION SAMPLING AND APPROVAL TO BACKFILL SHALL BE REQUIRED PRIOR TO BACKFILLING.
 - FINAL EXCAVATIONS WILL BE SURVEYED PRIOR TO BACKFILLING. SEE SECTION 01 78 29.
 - PLACE DEMARCATION LAYER NETTING OVER SIDES AND BOTTOM OF EXCAVATION PRIOR TO BACKFILLING. SEE DETAIL 1 ON DRAWING 4A. LOCATION AND DEPTH OF DEMARCATION LAYERS WILL BE SURVEYED. SEE SECTION 01 78 29.
 - SEE SHEET 4B FOR CONTROL POINT SCHEDULE AS WELL AS TRENCH SUMMARY TABLE THAT DEFINES THE DEPTH AND WIDTH OF EACH TRENCH.
 - AFTER DEMARCATION LAYER HAS BEEN PLACED AND SURVEYED, CONTRACTOR SHALL COORDINATE WITH ECSD CONTRACTOR FOR UTILITY AND FOUNDATION INSTALLATION. EXCAVATIONS THAT WILL REMAIN OPEN FOR AN EXTENDED PERIOD SHALL BE BACKFILL UP TO FOUR FEET TO THE TOP TO MEET OSHA SAFETY REQUIREMENTS. SEE DETAIL IN DRAWING 4B.

1	2/11/21	RESPONSE TO AGENCY COMMENTS	BGF	AK
REV	DATE	DESCRIPTION	DRN	APP
TITLE:		GRADING PLAN		
PROJECT:		INTERIM REMEDIATION MEASURE #5		
SITE:		FORMER SPERRY-REMINGTON SITE - NORTH PORTION ELMIRA, NEW YORK		
DESIGN BY:		AK	DATE: JANUARY 2021	
DRAWN BY:		AD	PROJECT NO.: MN08321	
CHECKED BY:		TBR	FILE: MN08321-504-UTILITY	
REVIEWED BY:		PLB	DRAWING NO.:	
APPROVED BY:		AK	2 OF 9	

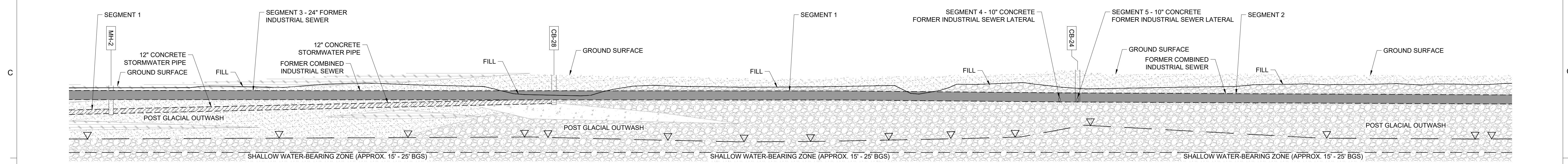
Aun Kungler
SIGNATURE
2/11/2021
DATE



B&B Engineers & Geologists of new york, p.c. <i>an affiliate of Geosyntec Consultants</i>		UNISYS	
--	--	---------------	--



8 PLAN
FORMER COMBINED INDUSTRIAL SEWER
 SCALE: 1" = 20'



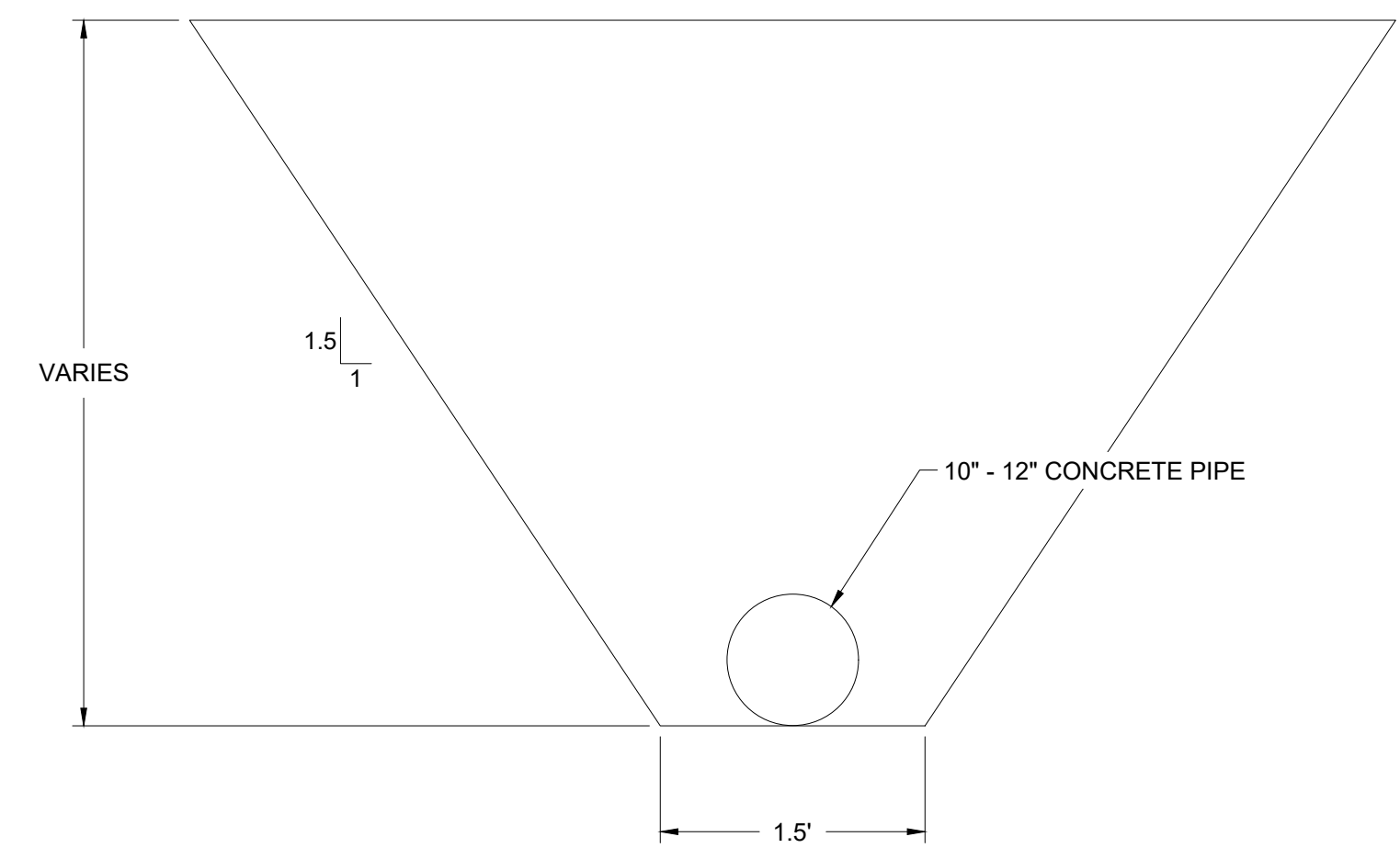
9 PROFILE
FORMER COMBINED INDUSTRIAL SEWER
 SCALE: 1" = 20'H - 10'V

LITHOLOGY

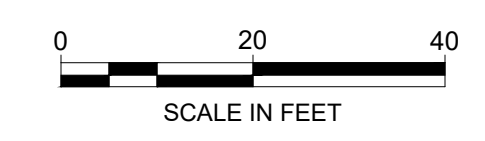
	WATER TABLE
	SILTY CLAY
	SANDY GRAVEL
	SILTY SAND
	GRAVELLY SAND

WEATHERED BEDROCK PRESENT AT APPROXIMATELY 780 FEET.

- NOTES:**
- FORMER INDUSTRIAL SEWER REMOVAL WILL BE CONDUCTED IN ACCORDANCE WITH SECTION 02 41 13.23. CONTRACTOR SHALL SUBMIT A SEWER REMOVAL WORK PLAN FOR NYSDEC APPROVAL.
 - THE LATERAL EXTENT OF SEGMENTS 4 AND 5 TO THE WEST ARE UNDEFINED. TRENCHING TO REMOVE THOSE SECTIONS SHALL CONTINUE TO THE WEST UNTIL THE END OF THE SEGMENT IS ENCOUNTERED OR THE TRENCH INTERSECTS THE EXCAVATION GRADING PRESENTED ON SHEET 4. OTHER LATERALS ENCOUNTERED DURING SEWER REMOVAL WILL BE EXPOSED AND REMOVED FROM THE FOOTBALL FIELD TO THE EXTENT FEASIBLE.
 - TRENCH SPOILS WILL BE MANAGED AS NON-HAZARDOUS SOIL AS PRESENTED IN SECTION 02 61 13.
 - THE NATURAL GAS LINE LOCATED ALONG THE PROPERTY LINE WILL BE DECOMMISSIONED UNDER THE INTERIM SITE MANAGEMENT PLAN PRIOR TO IRM #5. SEGMENTS OF NATURAL GAS LINE ENCOUNTERED SHALL BE REMOVED AND THE REMAINING ENDS SHALL BE CAPPED.
 - DOCUMENTATION SAMPLING AND APPROVAL TO BACKFILL SHALL BE REQUIRED PRIOR TO BACKFILLING.
 - FINAL EXCAVATIONS WILL BE SURVEYED PRIOR TO BACKFILLING. SEE SECTION 01 78 29.
 - PLACE DEMARCATION LAYER NETTING OVER BOTTOM OF EXCAVATION PRIOR TO BACKFILLING. SEE DETAIL 31 ON DRAWING 19. LOCATION AND DEPTH OF DEMARCATION LAYERS WILL BE SURVEYED PRIOR TO BACKFILLING. SEE SECTION 01 78 29.
 - ALL MATERIALS IMPORTED TO THE SITE MUST MEET THE REQUIREMENTS OF DER-10 SECTION 5.4(e) AND APPENDIX 5 FOR UNRESTRICTED USE INCLUDING EMERGING CONTAMINANTS. ALL CONFORMANCE DATA FOR IMPORTED MATERIALS MUST BE APPROVED BY NYSDEC. SEE SECTION 31 23 23.
 - A TEST TRENCH WILL BE EXCAVATED TO A DEPTH OF 11 FT BGS TO IDENTIFY THE ALIGNMENT OF SEGMENT 6.



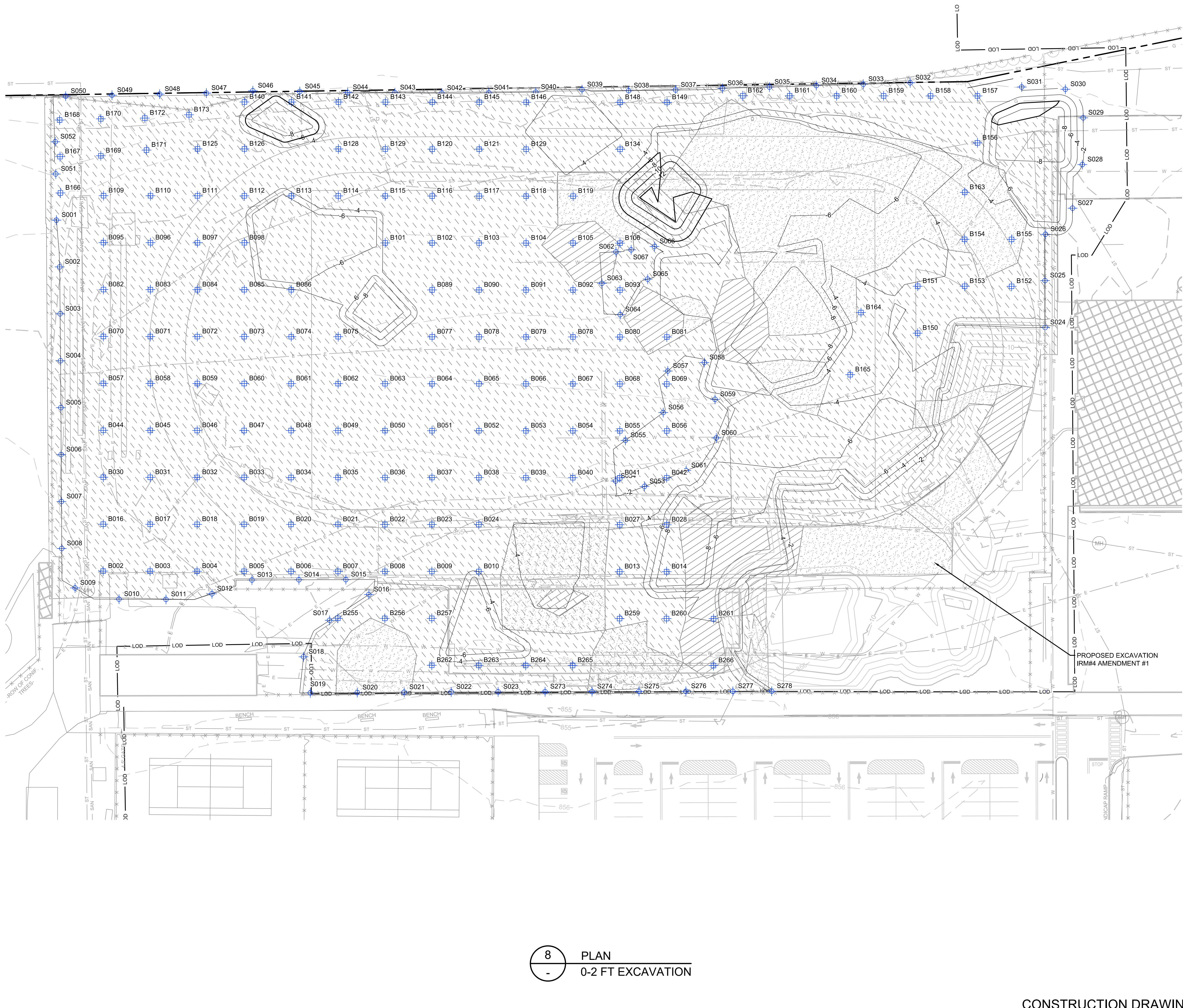
10 DETAIL
1.5 FOOT TRENCH
 SCALE: NOT TO SCALE



CONSTRUCTION DRAWING

REV	DATE	DESCRIPTION	DRN	APP
TITLE: FORMER INDUSTRIAL SEWER REMOVAL PLAN				
PROJECT: INTERIM REMEDIATION MEASURE #5				
SITE: FORMER SPERRY-REMINGTON SITE - NORTH PORTION ELMIRA, NEW YORK				
DESIGN BY: AK		DATE: JANUARY 2021		
DRAWN BY: AD		PROJECT NO.: MN0832I		
CHECKED BY: TBR		FILE: MN0832I-509-UTILITY		
REVIEWED BY: PLB		DRAWING NO.: 9		
APPROVED BY: AK		4 OF 9		

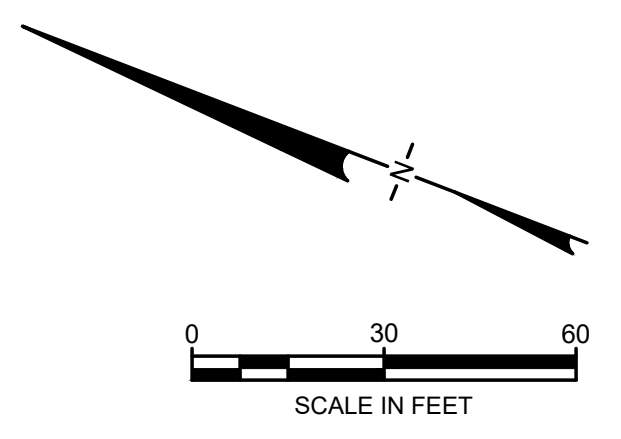
P:\cadd\PROJECTS\E\Unisys - Elmira NY\MN0832I\MN0832I-509-UTILITY.dwg
 b:\mtek - 2/11/2021 1:51 PM



LEGEND

	PRE-DELINEATION CONFIRMATION SAMPLE		NON RCRA/TSCA FOR OFF-SITE DISPOSAL (PCBS >= 10 AND < 50 MG/KG)
	MANHOLE		TSCA SOILS FOR OFF-SITE DISPOSAL (PCBS >= 50 MG/KG)
	CATCH BASIN		LAYBACK SOIL TO BE REUSED AS BACKFILL PENDING TESTING
	CULVERT PIPE		
	CHAIN LINK FENCE		
	WOODEN FENCE		
	PROPERTY LINE		
	EXISTING CONTOUR LINE		
	EDGE OF WATER		
	EDGE OF WOODS OR BRUSH		
	BURIED ELECTRIC CABLE		
	SANITARY SEWER		
	STORM SEWER		
	NATURAL GAS LINE		
	WATER LINE		
	EXCAVATION LIMITS		
	LIMIT OF DISTURBANCE		
	BURIED FIBER OPTIC CABLE		
	TREE		
	S040 SIDEWALL CONFIRMATION SAMPLE		
	B028 BOTTOM SAMPLE		

- NOTES:
- SEE SHEET 2 FOR GENERAL NOTES.
 - SEE SHEET 4 FOR GRADING PLAN.
 - SEE SECTION 026113 FOR REQUIREMENTS REGARDING EXCAVATION.
 - EXCAVATED SOILS WITH PCBs BELOW 50 Mg/Kg SHALL BE SEGREGATED AND STOCKPILED AT THE MATERIAL STAGING AREA FOR SAMPLING PURSUANT TO THE CATEGORIES SHOWN.
 - SOILS WITH PCBs > 50 Mg/Kg SHALL BE BROUGHT TO A TSCA ACCUMULATION AREA FOR LOADING FOR OFF-SITE DISPOSAL. TEMPORARY TSCA TRANSIT ROAD SHALL BE PLACED OVER NON-TSCA AREAS WHEN BRINGING THESE SOILS TO THE TSCA ACCUMULATION AREA.
 - SOILS IN METALS-DRIVEN IRM SHALL BE BROUGHT TO METALS STAGING AREA.
 - LAYBACK SOILS SHOWN ON SHEETS 10 TO 15 SHALL BE SEGREGATED AND STOCKPILED AT THE MATERIAL STAGING AREA FOR SAMPLING BY THE ENGINEER FOR POTENTIAL REUSE PER DER-10 SECTION 5.4(e).
 - SIDEWALL AND BOTTOM SAMPLE LOCATIONS ARE APPROXIMATE AND MAY BE MODIFIED IN THE FIELD BASED ON FIELD OBSERVATIONS AND CHANGES TO THE EXCAVATION PLAN.
 - APPROVAL OF ENGINEER AND NYSDEC REQUIRED BEFORE BACKFILLING AREAS WHERE CONFIRMATION SIDEWALL AND BOTTOM SAMPLES ARE COLLECTED.

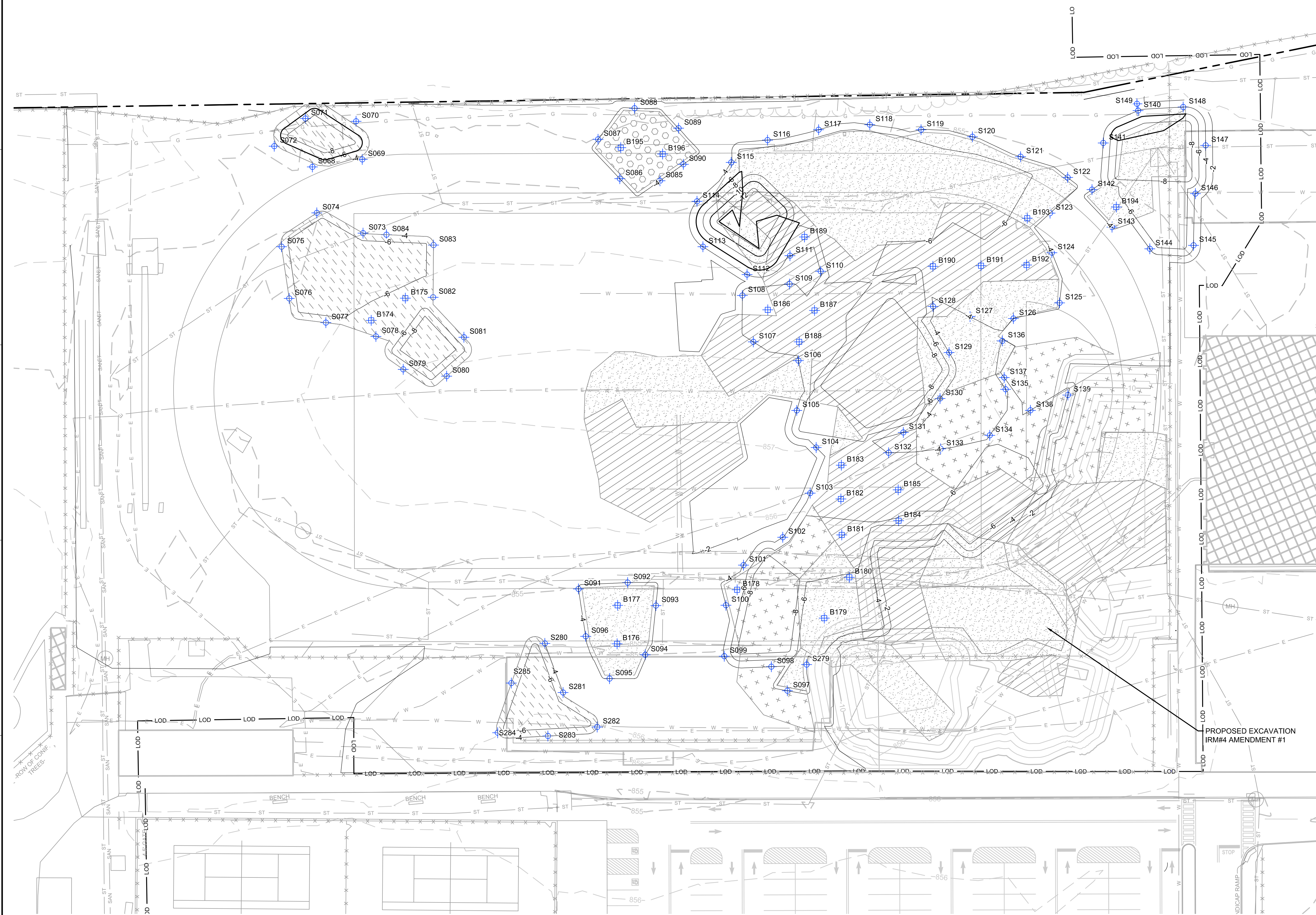


P:\cadd\PROJECTS\E\Unisys - Elmira NY\MN0832\IRM#5\510-512-UTILITY.dwg
b:\mtek - 2/11/2021 1:52 PM

8 PLAN
0-2 FT EXCAVATION

CONSTRUCTION DRAWING

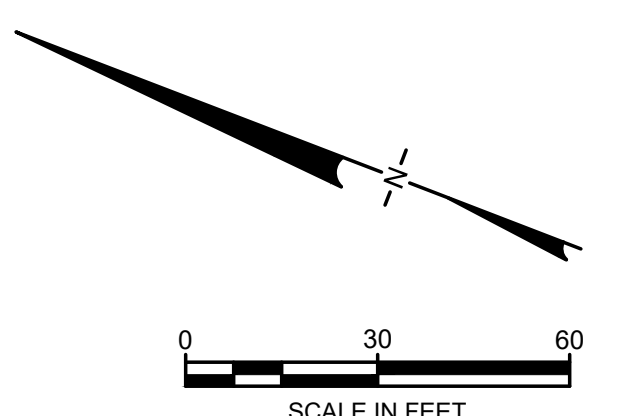
REV	DATE	DESCRIPTION	DRN	APP
 an affiliate of Geosyntec Consultants				
TITLE: 0-2 FT EXCAVATION				
PROJECT: INTERIM REMEDIATION MEASURE #5				
SITE: FORMER SPERRY-REMINGTON SITE - NORTH PORTION ELMIRA, NEW YORK				
DESIGN BY: JSW		DATE: JANUARY 2021		
DRAWN BY: JSW		PROJECT NO.: MN0832I		
CHECKED BY: AK		FILE: MN0832I-510-512-UTILITY		
REVIEWED BY: CHP		DRAWING NO.:		
APPROVED BY: AK		5 OF 9		



LEGEND

	PRE-DELINEATION CONFIRMATION SAMPLE		NON RCRA/TSCA FOR OFF-SITE DISPOSAL (PCBS >=10 AND < 50 MG/KG)
	MANHOLE		TSCA SOILS FOR OFF-SITE DISPOSAL (PCBS >= 50 MG/KG)
	CATCH BASIN		LAYBACK SOIL TO BE REUSED AS BACKFILL PENDING TESTING
	CULVERT PIPE		METALS-DRIVEN IRM
	CHAIN LINK FENCE		PAHs-DRIVEN IRM
	WOODEN FENCE		
	PROPERTY LINE		
	EXISTING CONTOUR LINE		
	EDGE OF WATER		
	EDGE OF WOODS OR BRUSH		
	BURIED ELECTRIC CABLE		
	SANITARY SEWER		
	STORM SEWER		
	NATURAL GAS LINE		
	WATER LINE		
	EXCAVATION LIMITS		
	LIMIT OF DISTURBANCE		
	BURIED FIBER OPTIC CABLE		
	TREE		
	SIDEWALL CONFIRMATION SAMPLE		
	BOTTOM SAMPLE		

- NOTES:**
- SEE SHEET 2 FOR GENERAL NOTES.
 - SEE SHEET 4 FOR GRADING PLAN.
 - SEE SECTION 026113 FOR REQUIREMENTS REGARDING EXCAVATION.
 - EXCAVATED SOILS WITH PCBs BELOW 50 Mg/Kg SHALL BE SEGREGATED AND STOCKPILED AT THE MATERIAL STAGING AREA FOR SAMPLING PURSUANT TO THE CATEGORIES SHOWN.
 - SOILS WITH PCBs > 50 Mg/Kg SHALL BE BROUGHT TO A TSCA ACCUMULATION AREA FOR LOADING FOR OFF-SITE DISPOSAL. TEMPORARY TSCA TRANSIT ROAD SHALL BE PLACED OVER NON-TSCA AREAS WHEN BRINGING THESE SOILS TO THE TSCA ACCUMULATION AREA.
 - SOILS IN METALS-DRIVEN IRM SHALL BE BROUGHT TO METALS STAGING AREA.
 - LAYBACK SOILS SHOWN ON SHEETS 10 TO 15 SHALL BE SEGREGATED AND STOCKPILED AT THE MATERIAL STAGING AREA FOR SAMPLING BY THE ENGINEER FOR POTENTIAL REUSE PER DER-10 SECTION 5.4(e).
 - SIDEWALL AND BOTTOM SAMPLE LOCATIONS ARE APPROXIMATE AND MAY BE MODIFIED IN THE FIELD BASED ON FIELD OBSERVATIONS AND CHANGES TO THE EXCAVATION PLAN.
 - APPROVAL OF ENGINEER AND NYSDEC REQUIRED BEFORE BACKFILLING AREAS WHERE CONFIRMATION SIDEWALL AND BOTTOM SAMPLES ARE COLLECTED.

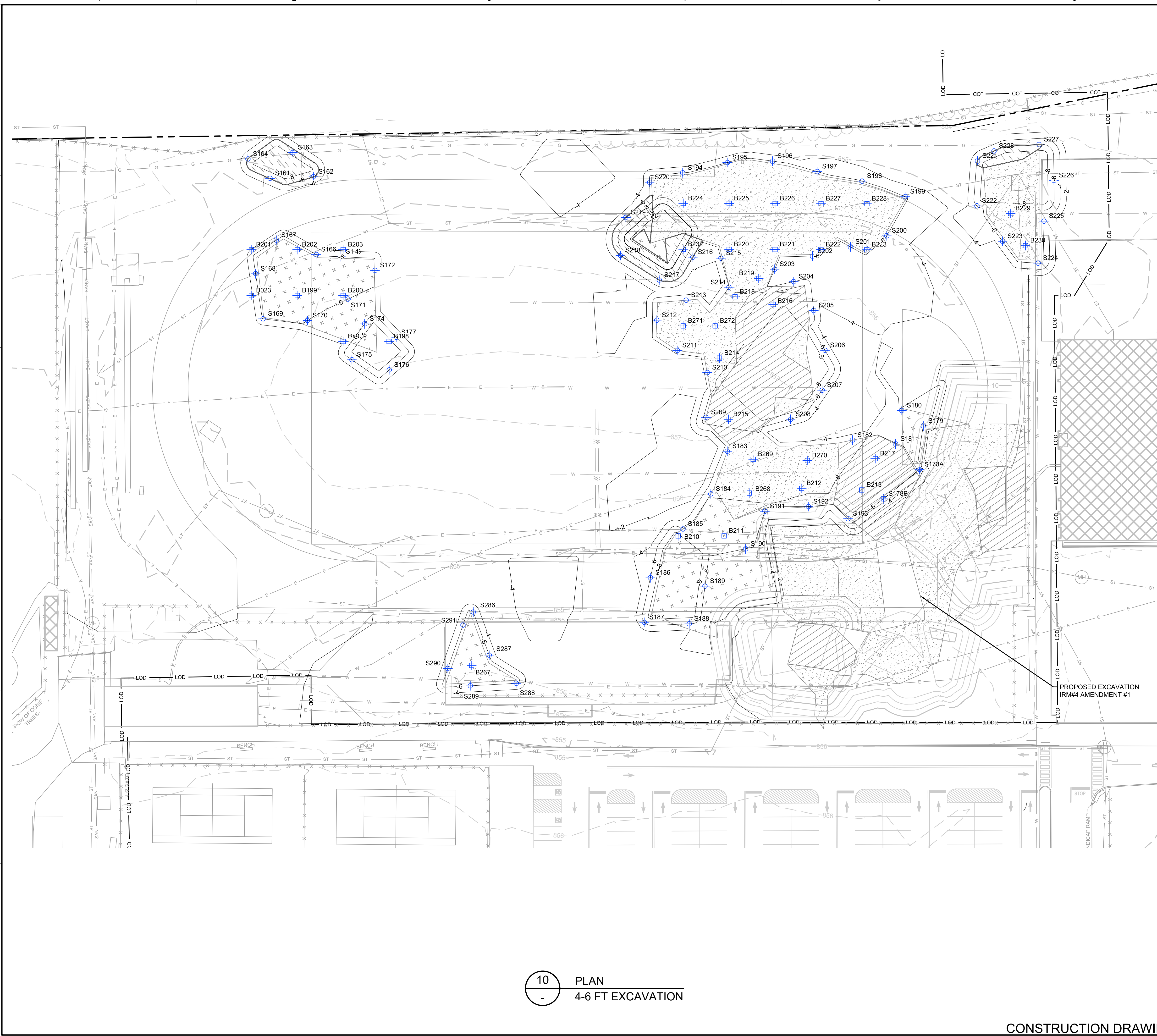


P:\cadd\PROJECTS\Unisys - Elmira NY (MN0832)\MN0832 IRM\F5\DWG\IRM 5-131-20\MN0832-510-512-UTILITY.dwg
blmick - 2/11/2021 1:52 PM

9 PLAN
- 2-4 FT EXCAVATION

CONSTRUCTION DRAWING

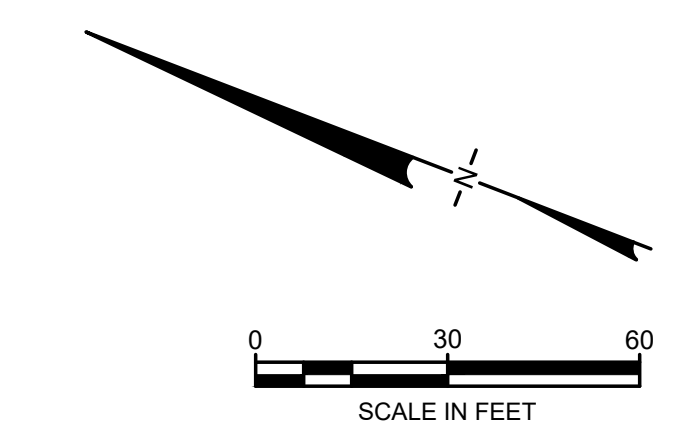
REV	DATE	DESCRIPTION	DRN	APP
 an affiliate of Geosyntec Consultants				
TITLE: 2-4 FT EXCAVATION				
PROJECT: INTERIM REMEDIATION MEASURE #5				
SITE: FORMER SPERRY-REMINGTON SITE - NORTH PORTION ELMIRA, NEW YORK				
DESIGN BY: JSW		DATE: JANUARY 2021		
DRAWN BY: JSW		PROJECT NO.: MN0832I		
CHECKED BY: AK		FILE: MN0832I-510-512-UTILITY		
REVIEWED BY: CHP		DRAWING NO.: 6 OF 9		
APPROVED BY: AK				
 SIGNATURE 2/11/2021 DATE				



LEGEND

	PRE-DELINEATION CONFIRMATION SAMPLE		NON RCRA/TSCA FOR OFF-SITE DISPOSAL (PCBS >=10 AND < 50 MG/KG)
	MANHOLE		TSCA SOILS FOR OFF-SITE DISPOSAL (PCBS >= 50 MG/KG)
	CATCH BASIN		LAYBACK SOIL TO BE REUSED AS BACKFILL PENDING TESTING
	CHAIN LINK FENCE		METALS-DRIVEN IRM
	WOODEN FENCE		
	PROPERTY LINE		
	EXISTING CONTOUR LINE		
	EDGE OF WATER		
	EDGE OF WOODS OR BRUSH		
	BURIED ELECTRIC CABLE		
	SANITARY SEWER		
	STORM SEWER		
	NATURAL GAS LINE		
	WATER LINE		
	EXCAVATION LIMITS		
	LIMIT OF DISTURBANCE		
	BURIED FIBER OPTIC CABLE		
	TREE		
	S040 SIDEWALL CONFIRMATION SAMPLE		
	B028 BOTTOM SAMPLE		

- NOTES:
- SEE SHEET 2 FOR GENERAL NOTES.
 - SEE SHEET 4 FOR GRADING PLAN.
 - SEE SECTION 026113 FOR REQUIREMENTS REGARDING EXCAVATION.
 - EXCAVATED SOILS WITH PCBs BELOW 50 Mg/Kg SHALL BE SEGREGATED AND STOCKPILED AT THE MATERIAL STAGING AREA FOR SAMPLING PURSUANT TO THE CATEGORIES SHOWN.
 - SOILS WITH PCBs > 50 Mg/Kg SHALL BE BROUGHT TO A TSCA ACUMULATION AREA FOR LOADING FOR OFF-SITE DISPOSAL. TEMPORARY TSCA TRANSIT ROAD SHALL BE PLACED OVER NON-TSCA AREAS WHEN BRINGING THESE SOILS TO THE TSCA ACCUMULATION AREA.
 - SOILS IN METALS-DRIVEN IRM SHALL BE BROUGHT TO METALS STAGING AREA.
 - LAYBACK SOILS SHOWN ON SHEETS 10 TO 15 SHALL BE SEGREGATED AND STOCKPILED AT THE MATERIAL STAGING AREA FOR SAMPLING BY THE ENGINEER FOR POTENTIAL REUSE PER DER-10 SECTION 5.4(e).
 - SIDEWALL AND BOTTOM SAMPLE LOCATIONS ARE APPROXIMATE AND MAY BE MODIFIED IN THE FIELD BASED ON FELD OBSERVATIONS AND CHANGES TO THE EXCAVATION PLAN.
 - APPROVAL OF ENGINEER AND NYSDEC REQUIRED BEFORE BACKFILLING AREAS WHERE CONFIRMATION SIDEWALL AND BOTTOM SAMPLES ARE COLLECTED.

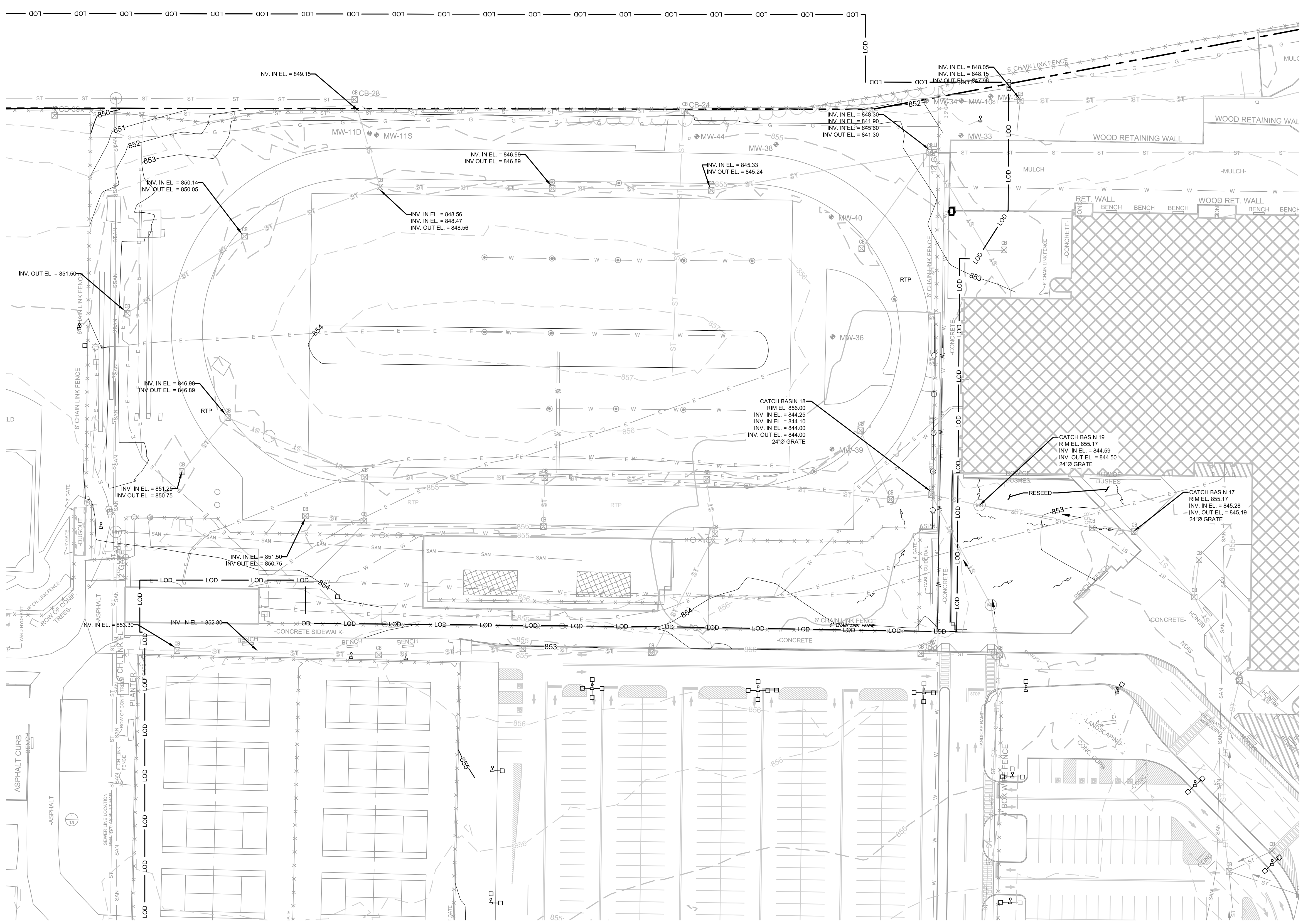


P:\cadd\PROJECTS\Unisys - Elmira NY (MN0832)\IRM\512-UTILITY.dwg
blmick - 2/11/2021 1:52 PM

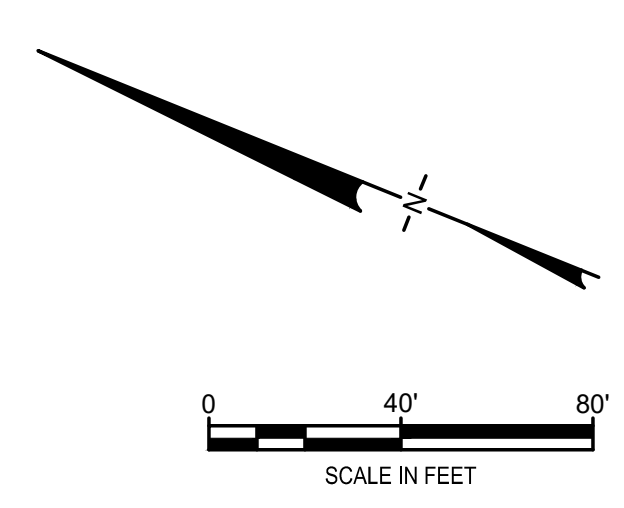
10 PLAN
- 4-6 FT EXCAVATION

CONSTRUCTION DRAWING

REV	DATE	DESCRIPTION	DRN	APP
 an affiliate of Geosyntec Consultants				
TITLE: 4-6 FT EXCAVATION				
PROJECT: INTERIM REMEDIATION MEASURE #5				
SITE: FORMER SPERRY-REMINGTON SITE - NORTH PORTION ELMIRA, NEW YORK				
DESIGN BY: JSW		DATE: JANUARY 2021		
DRAWN BY: JSW		PROJECT NO.: MN0832I		
CHECKED BY: AK		FILE: MN0832I-510-512-UTILITY		
REVIEWED BY: CHP		DRAWING NO.: 7 OF 9		
APPROVED BY: AK				
 SIGNATURE 2/11/2021 DATE				



LEGEND	
	MANHOLE
	CATCH BASIN
	CULVERT PIPE
	CHAIN LINK FENCE
	WOODEN FENCE
	PROPERTY LINE
	EXISTING CONTOUR LINE
	EDGE OF WATER
	EDGE OF WOODS OR BRUSH
	BURIED ELECTRIC CABLE
	SANITARY SEWER
	STORM SEWER
	NATURAL GAS LINE
	WATER LINE
	LIMIT OF DISTURBANCE
	BURIED FIBER OPTIC CABLE
	TREE
	FLOW DIRECTION
	PROPOSED INTERMEDIATE GRADE



- NOTES:
1. MANHOLE, CATCH BASIN, AND STORM DRAIN PIPE SIZES, MATERIALS, ELEVATIONS, AND INVERTS FROM DRAWING NUMBER L5.1 ENTITLED "SITE UTILITY PLAN - NORTH, HIGH SCHOOL 2017 ALTERATIONS PROJECT, ELMIRA CITY SCHOOL DISTRICT" AND DRAWING NUMBER L5.2 ENTITLED "SITE UTILITY PLAN - SOUTH, HIGH SCHOOL 2017 ALTERATIONS PROJECT, ELMIRA CITY SCHOOL DISTRICT", BY HUNT OF HORSEHEADS, NEW YORK, REVISED 21 FEBRUARY 2017; AND DRAWING NUMBER M-1c ENTITLED "SOUTHSIDE, SITE PLAN SOUTH MECHANICAL ELECTRICAL, AS-BUILT DWG", BY BOUILLE ELECTRIC, ELMIRA, N.Y., DATED 28 MAY 1980.
 2. CATCH BASIN, STORM SEWER, AND STORM STRUCTURE CONNECTION DETAILS FROM DRAWING NUMBER L6.1 ENTITLED "UTILITY DETAILS, HIGH SCHOOL 2017 ALTERATIONS PROJECT, ELMIRA CITY SCHOOL DISTRICT", BY HUNT OF HORSEHEADS, NEW YORK, REVISED 21 FEBRUARY 2017.
 3. CONTRACTOR MAY BACKFILL WITH NYSDEC-APPROVED REUSE SOIL UP TO INTERMEDIATE GRADE ELEVATIONS IN ACCORDANCE WITH SECTION 31 23 23.
 4. INTERMEDIATE GRADES ARE OFFSET BY 2 FEET IN ELEVATION FROM FINAL GRADES PRESENTED IN HS-SITE-NEW.DWG PROVIDED BY HUNT ON 10 NOVEMBER 2020.

P:\cadd\PROJECTS\E\unisygs - Elmira NY\MN0832\RM05\DWG\RM 5 1-31-20\MN0832-521-UTILITY.dwg
 bferrek - 2/11/2021 1:53 PM

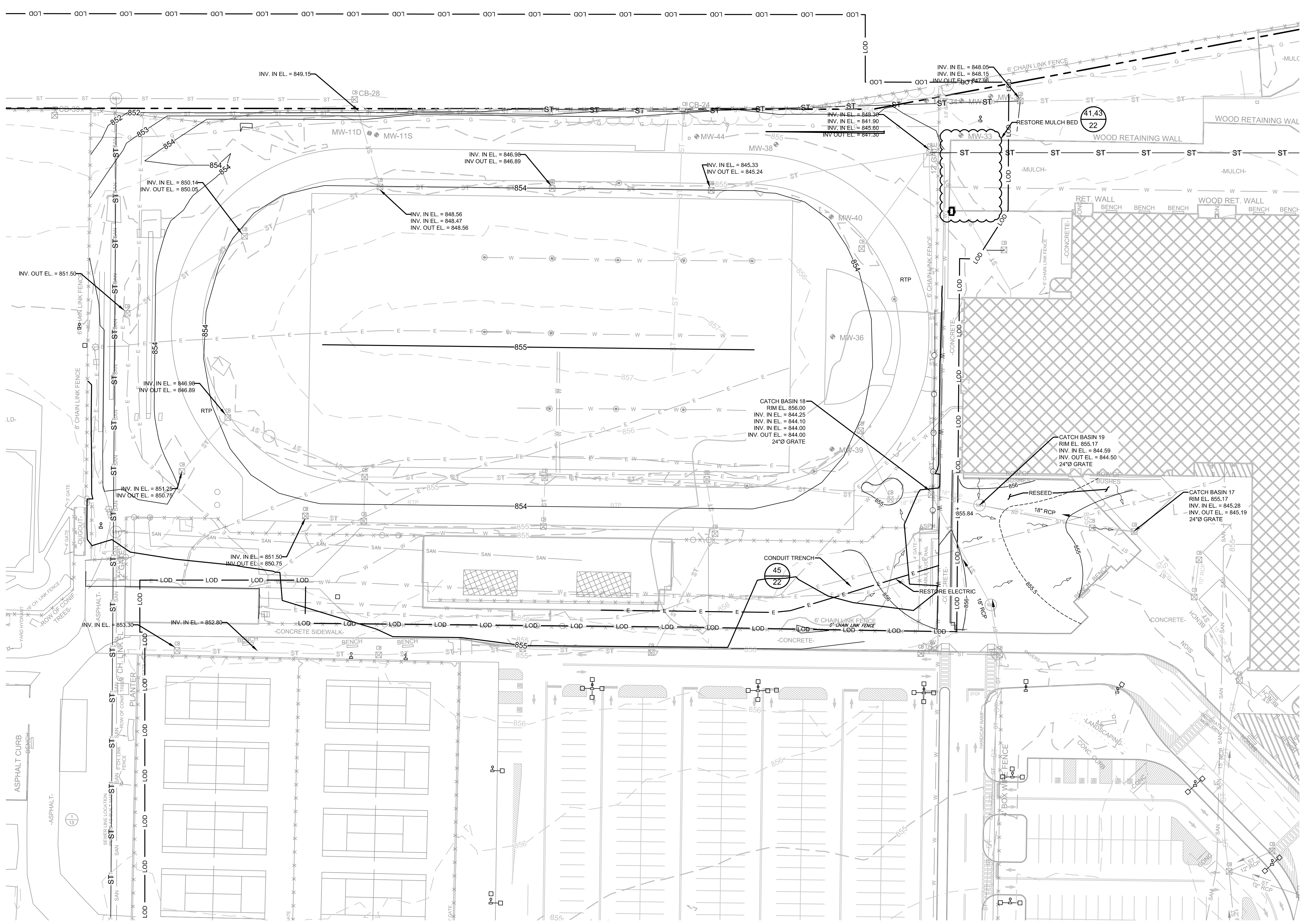
27 PLAN SITE RESTORATION

CONSTRUCTION DRAWING

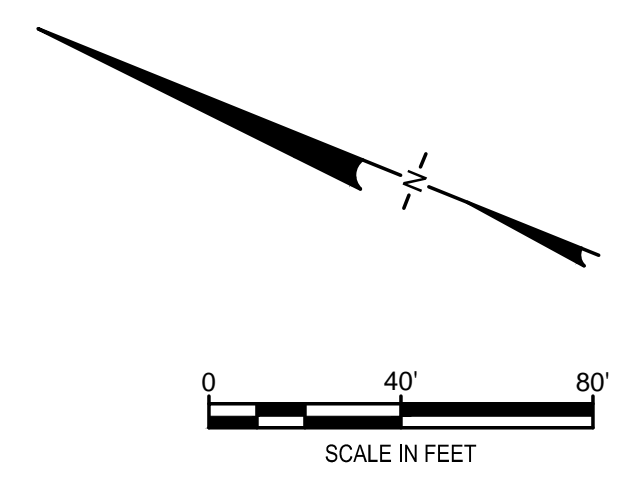
REV	DATE	DESCRIPTION	DRN	APP
 an affiliate of Geosyntec Consultants				
TITLE: INTERMEDIATE GRADING PLAN				
PROJECT: INTERIM REMEDIATION MEASURE #5				
SITE: FORMER SPERRY-REMINGTON SITE - NORTH PORTION ELMIRA, NEW YORK				
DESIGN BY: JSW		DATE: JANUARY 2021		
DRAWN BY: JSW		PROJECT NO.: MN0832I		
CHECKED BY: AK		FILE: MN0832I-521-UTILITY		
REVIEWED BY: CHP		DRAWING NO.:		
APPROVED BY: AK		8 OF 9		

Arun K. Krasnowski
 SIGNATURE
 2/11/2021
 DATE





LEGEND	
	MANHOLE
	CATCH BASIN
	CULVERT PIPE
	CHAIN LINK FENCE
	WOODEN FENCE
	PROPERTY LINE
	EXISTING CONTOUR LINE
	EDGE OF WATER
	EDGE OF WOODS OR BRUSH
	BURIED ELECTRIC CABLE
	SANITARY SEWER
	STORM SEWER
	NATURAL GAS LINE
	WATER LINE
	LIMIT OF DISTURBANCE
	BURIED FIBER OPTIC CABLE
	TREE
	FLOW DIRECTION
	PROPOSED FINAL GRADE



- NOTES:
- SEE SHEET 2 FOR GENERAL NOTES
 - MANHOLE, CATCH BASIN, AND STORM DRAIN PIPE SIZES, MATERIALS, ELEVATIONS, AND INVERTS FROM DRAWING NUMBER L5.1 ENTITLED "SITE UTILITY PLAN - NORTH, HIGH SCHOOL 2017 ALTERATIONS PROJECT, ELMIRA CITY SCHOOL DISTRICT" AND DRAWING NUMBER L5.2 ENTITLED "SITE UTILITY PLAN - SOUTH, HIGH SCHOOL 2017 ALTERATIONS PROJECT, ELMIRA CITY SCHOOL DISTRICT", BY HUNT OF HORSEHEADS, NEW YORK, REVISED 21 FEBRUARY 2017; AND DRAWING NUMBER M-1c ENTITLED "SOUTH SIDE, SITE PLAN SOUTH MECHANICAL ELECTRICAL, AS-BUILT DWG", BY BOUILLE ELECTRIC, ELMIRA, N.Y., DATED 28 MAY 1980.
 - CATCH BASIN, STORM SEWER, AND STORM STRUCTURE CONNECTION DETAILS FROM DRAWING NUMBER L6.1 ENTITLED "UTILITY DETAILS, HIGH SCHOOL 2017 ALTERATIONS PROJECT, ELMIRA CITY SCHOOL DISTRICT", BY HUNT OF HORSEHEADS, NEW YORK, REVISED 21 FEBRUARY 2017.
 - DETAILED SURVEY OF EXCAVATION AREA TO BE PERFORMED PRIOR TO COMMENCING EXCAVATION PROJECT TO DOCUMENT AS-BUILT GRADES, LOCATIONS, AND MATERIALS OF ALL INFRASTRUCTURE TO BE REMOVED. ALL INFRASTRUCTURE REMOVED FOR EXCAVATION TO BE REPLACED IN KIND, AS DOCUMENTED BY PRE-EXCAVATION AS-BUILT SURVEY. INFRASTRUCTURE TO BE REPLACED IN KIND IN ACCORDANCE WITH THE TERMS OF THE SETTLEMENT AGREEMENT BETWEEN UNISYS AND ECSD DATED 3 APRIL 2020 WITH REGARD TO FOOTBALL FIELD COMPLEX RESTORATION.
 - FINAL GRADES PROVIDED BY HUNT IN DRAWING "L4.2 - SITE INTERMITTENT GRADING PLAN" RECEIVED 11 FEBRUARY 2021.

V:\COLUMBIA-01\Drawings\PROJECTS\EU\phys - Elmira NY (MN0832)\MN0832-IR\MSD\DWG\IRM 5 1-31-20\MN0832-522-UTILITY.dwg
 bferrek - 2/11/2021 1:58 PM

27 PLAN SITE RESTORATION

CONSTRUCTION DRAWING

REV	DATE	DESCRIPTION	DRN	APP
TITLE: PROPOSED RESTORATION PLAN				
PROJECT: INTERIM REMEDIATION MEASURE #5				
SITE: FORMER SPERRY-REMINGTON SITE - NORTH PORTION ELMIRA, NEW YORK				
DESIGN BY: JSW		DATE: JANUARY 2021		
DRAWN BY: JSW		PROJECT NO.: MN0832I		
CHECKED BY: AK		FILE: MN0832I-522-UTILITY		
REVIEWED BY: CHP		DRAWING NO.:		
APPROVED BY: AK		9 OF 9		