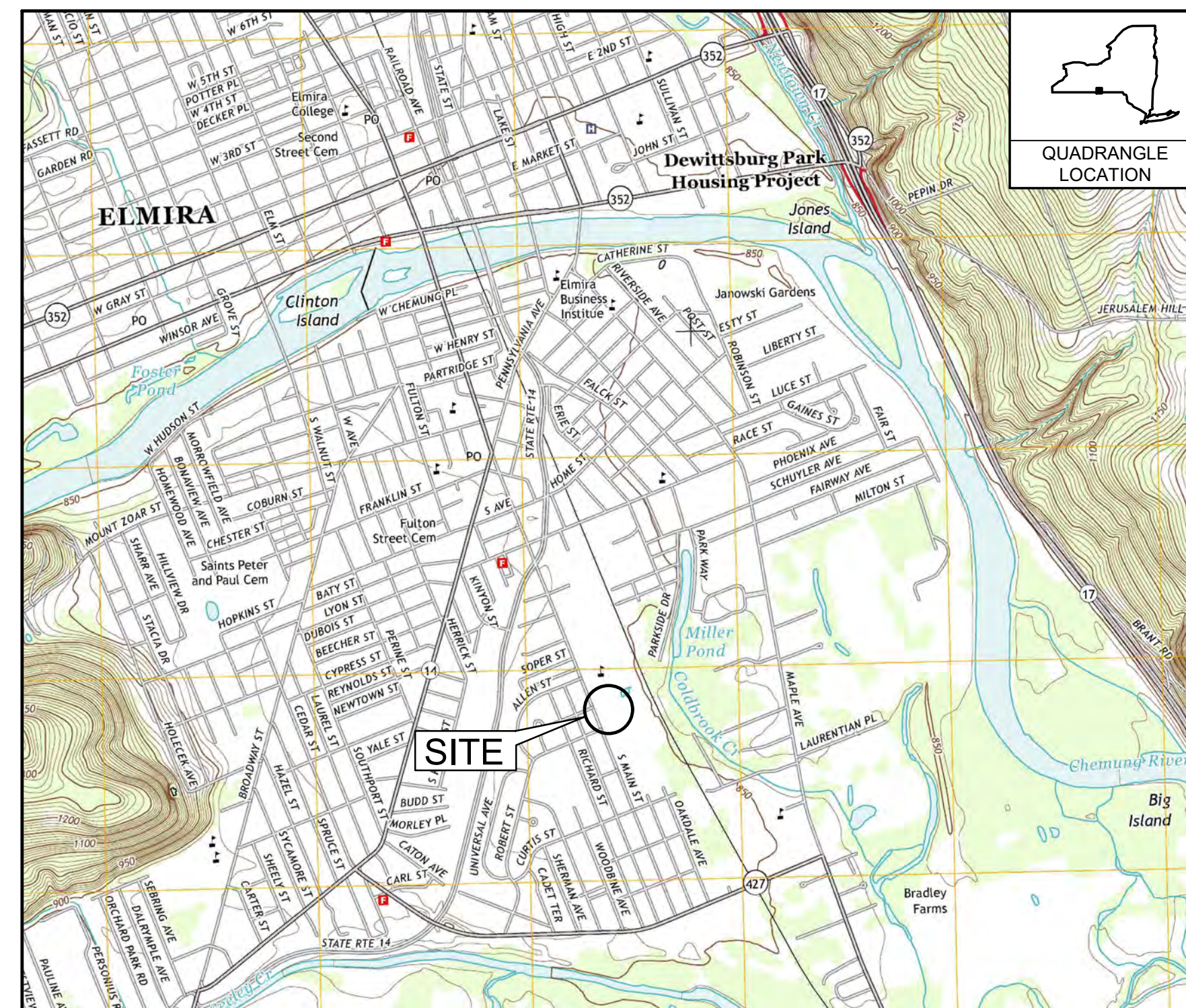


INTERIM REMEDIATION MEASURE #4

AMENDMENT #1 ELMIRA, NEW YORK

SEPTEMBER 2020



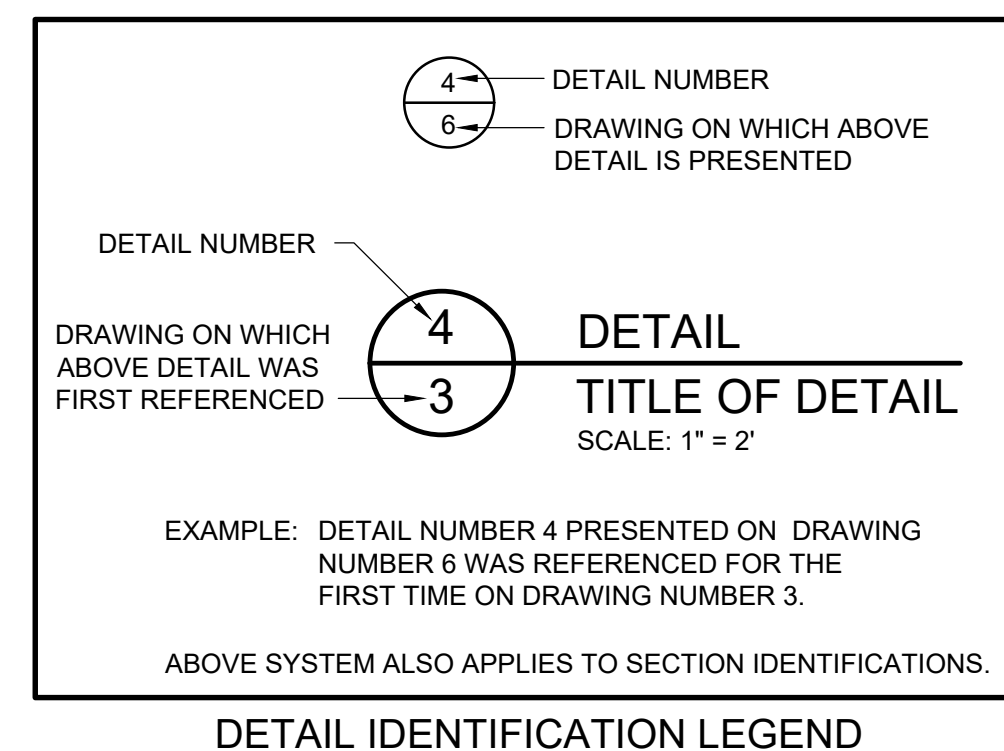
LOCATION MAP

| LIST OF DRAWINGS | |
|------------------|--------------------------------------|
| NUMBER | TITLE |
| 1 | TITLE SHEET |
| 2 | PROPOSED RESTORATION PLAN |
| 3 | SITE WORK PLAN |
| 4 | GRADING PLAN |
| 5 | SUPPORT OF EXCAVATION PLAN |
| 6 | DEMOLITION PLAN |
| 7 | UTILITES REMOVAL |
| 8 | STORM DRAIN MAINTENANCE |
| 9 | 0-2 FT EXCAVATION |
| 10 | 2-4 FT EXCAVATION |
| 11 | 4-6 FT EXCAVATION |
| 12 | 6-8 FT EXCAVATION |
| 13 | 8-10 FT EXCAVATION |
| 14 | 10-12 FT EXCAVATION |
| 15 | 12-14 FT EXCAVATION |
| 15 | 14-16 FT EXCAVATION |
| 17 | STORM DRAIN RESTORATION PLAN |
| 18 | RCRA ACCUMULATION AREA PLAN |
| 19 | EQUIPMENT WASH PAD |
| 20 | EROSION AND SEDIMENT CONTROL PLAN |
| 21 | EROSION AND SEDIMENT CONTROL DETAILS |

PREPARED FOR: **UNISYS CORPORATION**
CORPORATE ENVIRONMENTAL AFFAIRS
3199 PILOT KNOB ROAD MS F1B05
EAGAN, MN 55121

PREPARED BY: **B&B Engineers & Geologists
of new york, p.c.**
an affiliate of Geosyntec Consultants

10211 WINCOPIN CIRCLE, FLOOR 4
COLUMBIA, MD 20144
PHONE: (410) 381-4333



| REV | DATE | DESCRIPTION | DRN | APP |
|-----|----------|-----------------------------|-----|-----|
| 1 | 9/8/2020 | RESPONSE TO AGENCY COMMENTS | AD | AK |

**B&B Engineers & Geologists
of new york, p.c.**
an affiliate of Geosyntec Consultants

UNISYS

TITLE: TITLE SHEET

PROJECT: INTERIM REMEDIATION MEASURE #4

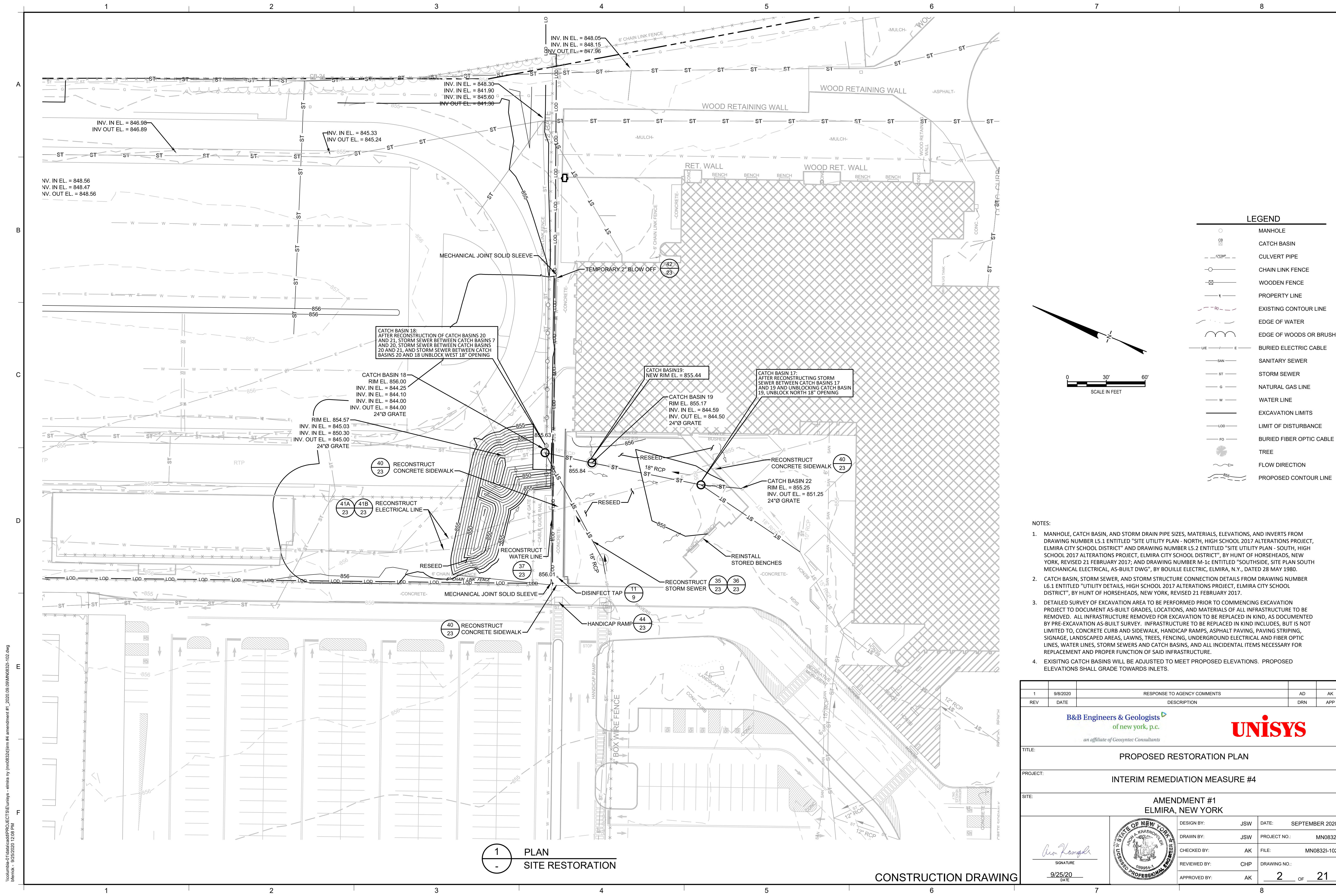
SITE: AMENDMENT #1
ELMIRA, NEW YORK

| | |
|------------------|----------------------|
| DESIGN BY: AK | DATE: SEPTEMBER 2020 |
| DRAWN BY: AD | PROJECT NO.: MN08321 |
| CHECKED BY: TBR | FILE: MN08321-101 |
| REVIEWED BY: PLB | DRAWING NO.: 1 OF 21 |
| APPROVED BY: AK | |

SIGNATURE: *AK*
DATE: 9/25/20

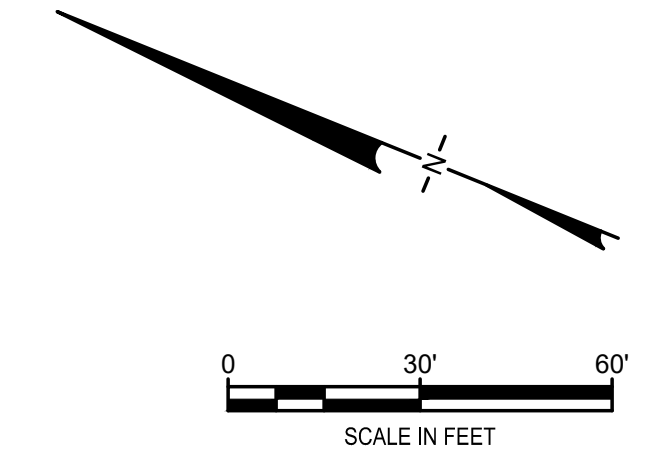
STATE OF NEW YORK
PROFESSIONAL ENGINEER
089954-1

CONSTRUCTION DRAWING



LEGEND

| | |
|-------------|--------------------------|
| ○ | MANHOLE |
| CB | CATCH BASIN |
| — 12" RCP — | CULVERT PIPE |
| — 18" RCP — | CHAIN LINK FENCE |
| — 24" RCP — | WOODEN FENCE |
| — | PROPERTY LINE |
| — 80' — | EXISTING CONTOUR LINE |
| — | EDGE OF WATER |
| — | EDGE OF WOODS OR BRUSH |
| — UE — | BURIED ELECTRIC CABLE |
| — SAN — | SANITARY SEWER |
| — ST — | STORM SEWER |
| — G — | NATURAL GAS LINE |
| — W — | WATER LINE |
| — | EXCAVATION LIMITS |
| — LOD — | LIMIT OF DISTURBANCE |
| — FO — | BURIED FIBER OPTIC CABLE |
| ● | TREE |
| — | FLOW DIRECTION |
| — 80' — | PROPOSED CONTOUR LINE |



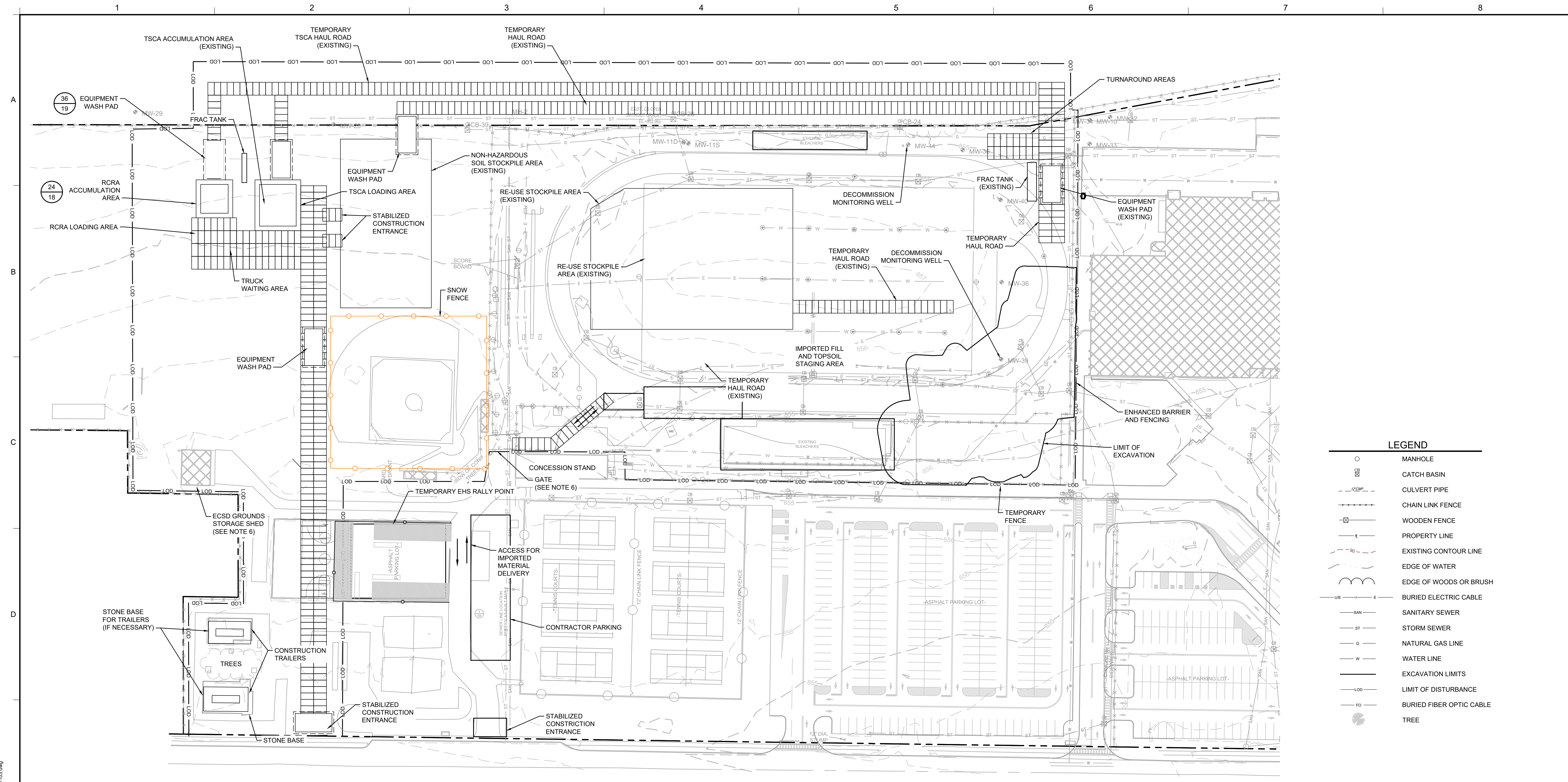
- NOTES:**
- MANHOLE, CATCH BASIN, AND STORM DRAIN PIPE SIZES, MATERIALS, ELEVATIONS, AND INVERTS FROM DRAWING NUMBER L5.1 ENTITLED "SITE UTILITY PLAN - NORTH, HIGH SCHOOL 2017 ALTERATIONS PROJECT, ELMIRA CITY SCHOOL DISTRICT" AND DRAWING NUMBER L5.2 ENTITLED "SITE UTILITY PLAN - SOUTH, HIGH SCHOOL 2017 ALTERATIONS PROJECT, ELMIRA CITY SCHOOL DISTRICT", BY HUNT OF HORSEHEADS, NEW YORK, REVISED 21 FEBRUARY 2017; AND DRAWING NUMBER M-1c ENTITLED "SOUTHIDE, SITE PLAN SOUTH MECHANICAL ELECTRICAL, AS-BUILT DWG", BY BOUILLE ELECTRIC, ELMIRA, N.Y., DATED 28 MAY 1980.
 - CATCH BASIN, STORM SEWER, AND STORM STRUCTURE CONNECTION DETAILS FROM DRAWING NUMBER L6.1 ENTITLED "UTILITY DETAILS, HIGH SCHOOL 2017 ALTERATIONS PROJECT, ELMIRA CITY SCHOOL DISTRICT", BY HUNT OF HORSEHEADS, NEW YORK, REVISED 21 FEBRUARY 2017.
 - DETAILED SURVEY OF EXCAVATION AREA TO BE PERFORMED PRIOR TO COMMENCING EXCAVATION PROJECT TO DOCUMENT AS-BUILT GRADES, LOCATIONS, AND MATERIALS OF ALL INFRASTRUCTURE TO BE REMOVED. ALL INFRASTRUCTURE REMOVED FOR EXCAVATION TO BE REPLACED IN KIND, AS DOCUMENTED BY PRE-EXCAVATION AS-BUILT SURVEY. INFRASTRUCTURE TO BE REPLACED IN KIND INCLUDES, BUT IS NOT LIMITED TO, CONCRETE CURB AND SIDEWALK, HANDICAP RAMPS, ASPHALT PAVING, PAVING STRIPING, SIGNAGE, LANDSCAPED AREAS, LAWNS, TREES, FENCING, UNDERGROUND ELECTRICAL AND FIBER OPTIC LINES, WATER LINES, STORM SEWERS AND CATCH BASINS, AND ALL INCIDENTAL ITEMS NECESSARY FOR REPLACEMENT AND PROPER FUNCTION OF SAID INFRASTRUCTURE.
 - EXISTING CATCH BASINS WILL BE ADJUSTED TO MEET PROPOSED ELEVATIONS. PROPOSED ELEVATIONS SHALL GRADE TOWARDS INLETS.

| | | | | |
|--|----------|-----------------------------|----------------|-----|
| 1 | 9/8/2020 | RESPONSE TO AGENCY COMMENTS | AD | AK |
| REV | DATE | DESCRIPTION | DRN | APP |
| | | | | |
| PROPOSED RESTORATION PLAN | | | | |
| INTERIM REMEDIATION MEASURE #4 | | | | |
| AMENDMENT #1 ELMIRA, NEW YORK | | | | |
| DESIGN BY: | JSW | DATE: | SEPTEMBER 2020 | |
| DRAWN BY: | JSW | PROJECT NO.: | MN0832I | |
| CHECKED BY: | AK | FILE: | MN0832I-102 | |
| REVIEWED BY: | CHP | DRAWING NO.: | 2 OF 21 | |
| APPROVED BY: | AK | | | |

1 PLAN
SITE RESTORATION

CONSTRUCTION DRAWING

\\columba01\data\cad\PROJECTS\elmira-ny\mn0832i\firm #4 amendment #1_2020.09.09\MN0832I-102.dwg
 bferrek - 9/25/2020 12:08 PM



LEGEND

- MANHOLE
- ⊗ CATCH BASIN
- CULVERT PIPE
- CHAIN LINK FENCE
- WOODEN FENCE
- PROPERTY LINE
- EXISTING CONTOUR LINE
- EDGE OF WATER
- EDGE OF WOODS OR BRUSH
- BURIED ELECTRIC CABLE
- SAN SANITARY SEWER
- ST STORM SEWER
- G NATURAL GAS LINE
- W WATER LINE
- EXCAVATION LIMITS
- LOD LIMIT OF DISTURBANCE
- FO BURIED FIBER OPTIC CABLE
- TREE

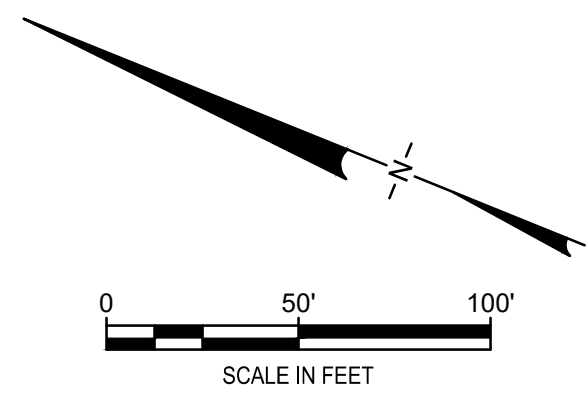
2 PLAN SITE PLAN

NOTES:




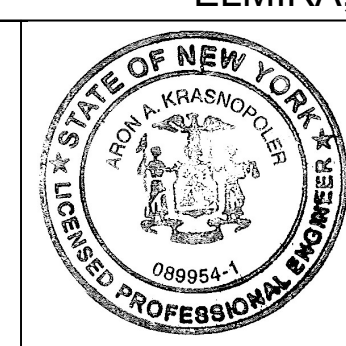
CONSTRUCTION SEQUENCE:

1. INSTALL/MAINTAIN TEMPORARY SEDIMENT AND EROSION CONTROLS IN ACCORDANCE WITH APPROVED SWPPP.
2. REMOVE EXISTING CHAIN-LINKED AS INDICATED ON SHEET 6.
3. INSTALL TEMPORARY FENCING AROUND THE LIMITS OF DISTURBANCE.
4. CLEAR THE CONSTRUCTION AREA WITHIN LIMITS OF DISTURBANCE.
5. INSTALL SUPPORT OF EXCAVATION AS SHOWN ON DRAWING 5.
6. INSTALL STORMWATER BYPASS AS SHOWN ON SHEET 8.
7. EXCAVATE SOILS AS SHOWN TO THE GRADES SHOWN ON DRAWING 4. SEE SECTION 02 61 13. SEGREGATE INTO SOILS WITH TOTAL PCBs ≥ 50 MG/KG FOR DISPOSAL, SOILS WITH TOTAL PCBs < 50 BUT ≥ 10 MG/KG FOR DISPOSAL, AND SOILS WITH TOTAL < 10 MG/KG FOR POTENTIAL RE-USE AS BACKFILL AS SHOWN ON DRAWINGS 9 TO 16.
8. REMOVE EXISTING UTILITIES WITHIN LIMITS OF EXCAVATION AS SHOWN ON DRAWINGS 7 IN ORDER TO COMPLETE EXCAVATION. CAP OR OTHERWISE PRESERVE ENDS OF UTILITIES TO ENABLE RE-CONNECTION IN-KIND REPLACEMENTS. REMOVED UTILITIES SHALL BE CHARACTERIZED FOR OFF-SITE DISPOSAL.
9. DECOMMISSION MONITORING WELLS MW-39 AND MW-44 IN ACCORDANCE WITH NYSDEC POLICY CP-43.
10. RECONSTRUCT IN-KIND REMOVED UTILITIES.

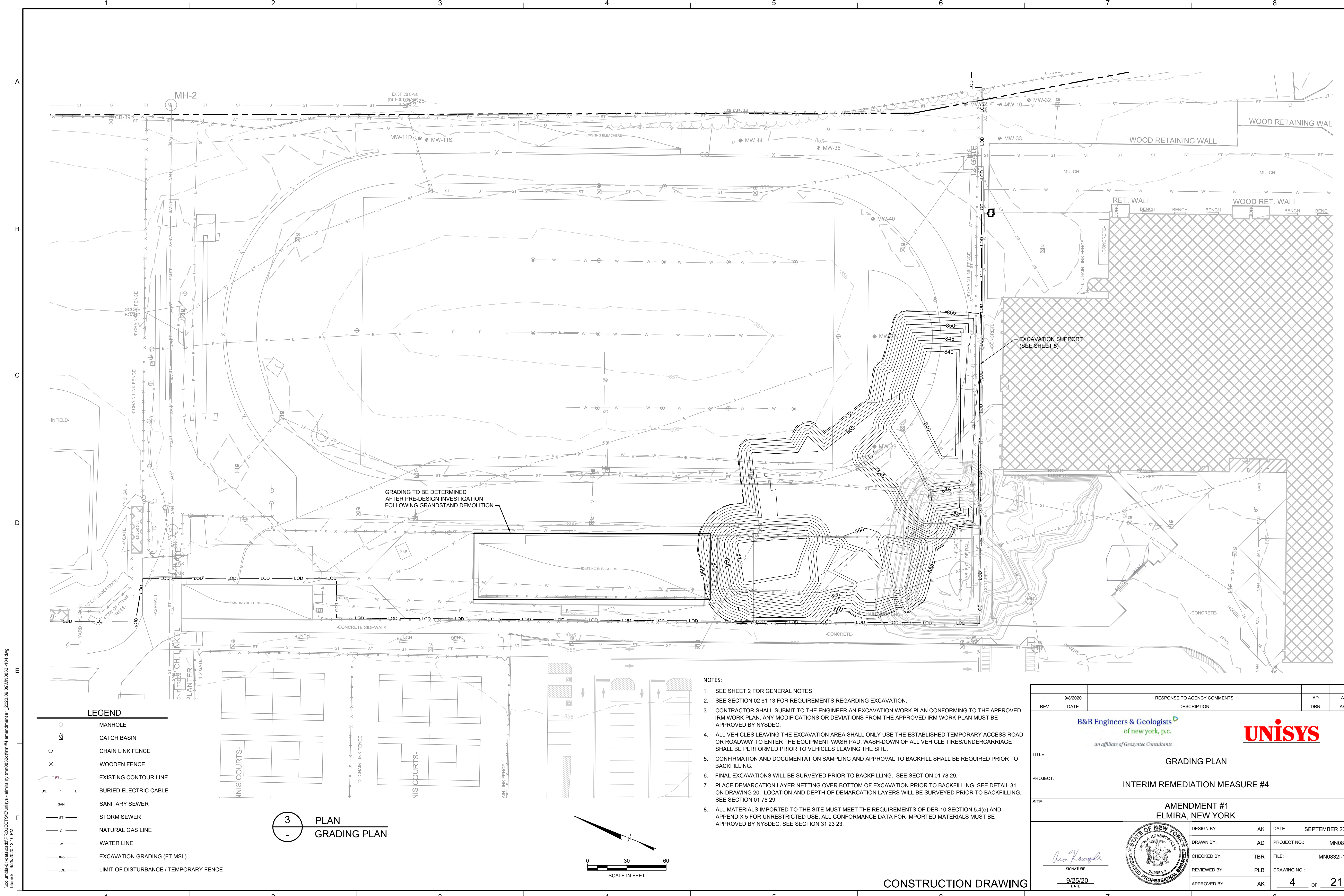
1. ALL WORK SHALL BE COMPLETED IN ACCORDANCE WITH THE APPROVED IRM WORK PLAN AMENDMENT #1. ANY PROPOSED MODIFICATION TO THE WORK PLAN MUST BE APPROVED BY NYSDEC.
2. CONTRACTOR SHALL USE TEMPORARY FACILITIES CONSTRUCTED FOR IRM #4 IN ACCORDANCE WITH IRM #4 CONSTRUCTION DRAWINGS DATED 19 MAY 2020.
3. CONSTRUCTION TRAFFIC PATTERNS MAY BE MODIFIED BY CONTRACTOR AS NECESSARY SUBJECT TO APPROVAL OF ENGINEER, ECSD AND NYSDEC.
4. CONTRACTOR SHALL INSTALL TEMPORARY 6-FOOT TALL CHAIN LINK FENCING AROUND THE LIMITS OF CONSTRUCTION. FENCING SHALL INCLUDE VISUAL SCREENING.
5. TEMPORARY TSCA TRANSIT ROAD SHALL BE PLACED OVER NON-TSCA AREAS TRANSIT OF HAUL TRUCKS CARRYING SOILS WITH ≥ 50 MG/KG PCBs (TSCA HAUL TRUCKS).
6. CONTRACTOR SHALL MAINTAIN ACCESS ECSD PERSONNEL. TO GROUNDS STORAGE SHED AND CONCESSION STAND STORAGE.
7. CONTRACTOR SHALL PROTECT EXISTING MONITORING WELLS WITHIN THE LIMIT OF DISTURBANCE DURING CONSTRUCTION.
8. RCRA ACCUMULATION AND LOADING AREAS SHALL BE CONSTRUCTED IF NEEDED TO MANAGE RCRA HAZARDOUS WASTE (TOTAL PCBs, 50 MG/KG)



CONSTRUCTION DRAWING

| | | | | |
|--|----------|---|-----|-----|
| 1 | 9/8/2020 | RESPONSE TO AGENCY COMMENTS | AD | AK |
| REV | DATE | DESCRIPTION | DRN | APP |
|   <p><i>an affiliate of Geosynic Consultants</i></p> | | | | |
| TITLE: SITE WORK PLAN | | | | |
| PROJECT: INTERIM REMEDIATION MEASURE #4 | | | | |
| SITE: AMENDMENT #1 ELMIRA, NEW YORK | | | | |
| DESIGN BY: AK | | DATE: SEPTEMBER 2020 | | |
| DRAWN BY: JWO | | PROJECT NO.: MN08321 | | |
| CHECKED BY: TBR | | FILE: MN08321-103 | | |
| REVIEWED BY: PLB | | DRAWING NO.: | | |
| APPROVED BY: AK | | 3 OF 21 | | |
|  SIGNATURE 9/25/20 DATE | |  | | |

I:\columbia-01\data\cadd\PROJECTS\ELMIRA\elmira ny (mn08321)\irm #4 amendment #1_2020.09.09\MN08321-103.dwg
 bfiretek - 9/25/2020 12:09 PM



LEGEND

- 853 MANHOLE
- 853 CATCH BASIN
- CHAIN LINK FENCE
- WOODEN FENCE
- 90 - EXISTING CONTOUR LINE
- SAN — BURIED ELECTRIC CABLE
- ST — SANITARY SEWER
- G — STORM SEWER
- W — NATURAL GAS LINE
- W — WATER LINE
- 845 — EXCAVATION GRADING (FT MSL)
- LOD — LIMIT OF DISTURBANCE / TEMPORARY FENCE

3 PLAN GRADING PLAN

NOTES:

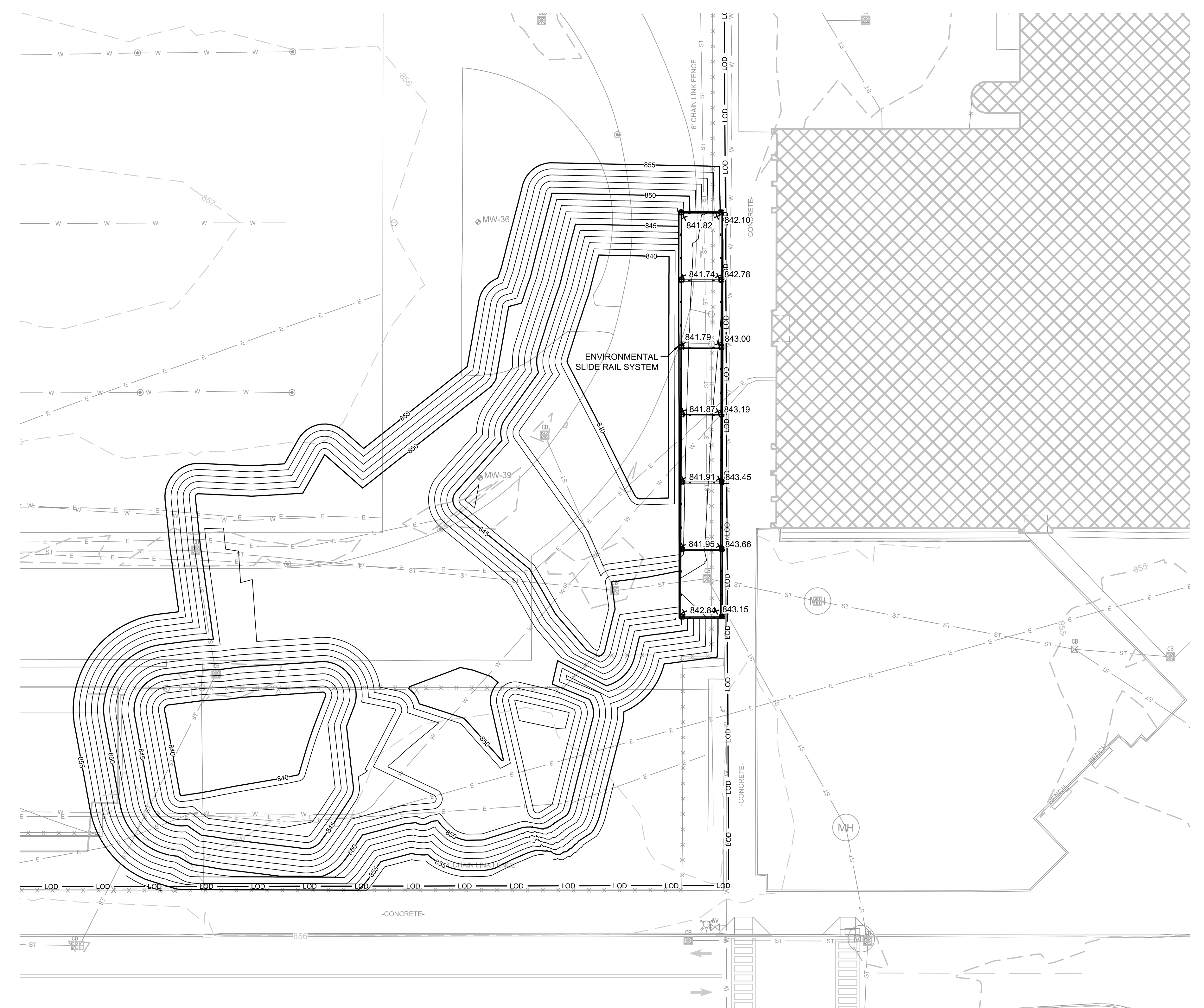
1. SEE SHEET 2 FOR GENERAL NOTES
2. SEE SECTION 02 61 13 FOR REQUIREMENTS REGARDING EXCAVATION.
3. CONTRACTOR SHALL SUBMIT TO THE ENGINEER AN EXCAVATION WORK PLAN CONFORMING TO THE APPROVED IRM WORK PLAN. ANY MODIFICATIONS OR DEVIATIONS FROM THE APPROVED IRM WORK PLAN MUST BE APPROVED BY NYSDEC.
4. ALL VEHICLES LEAVING THE EXCAVATION AREA SHALL ONLY USE THE ESTABLISHED TEMPORARY ACCESS ROAD OR ROADWAY TO ENTER THE EQUIPMENT WASH PAD. WASH-DOWN OF ALL VEHICLE TIRES/UNDERCARRIAGE SHALL BE PERFORMED PRIOR TO VEHICLES LEAVING THE SITE.
5. CONFIRMATION AND DOCUMENTATION SAMPLING AND APPROVAL TO BACKFILL SHALL BE REQUIRED PRIOR TO BACKFILLING.
6. FINAL EXCAVATIONS WILL BE SURVEYED PRIOR TO BACKFILLING. SEE SECTION 01 78 29.
7. PLACE DEMARCATION LAYER NETTING OVER BOTTOM OF EXCAVATION PRIOR TO BACKFILLING. SEE DETAIL 31 ON DRAWING 20. LOCATION AND DEPTH OF DEMARCATION LAYERS WILL BE SURVEYED PRIOR TO BACKFILLING. SEE SECTION 01 78 29.
8. ALL MATERIALS IMPORTED TO THE SITE MUST MEET THE REQUIREMENTS OF DER-10 SECTION 5.4(e) AND APPENDIX 5 FOR UNRESTRICTED USE. ALL CONFORMANCE DATA FOR IMPORTED MATERIALS MUST BE APPROVED BY NYSDEC. SEE SECTION 31 23 23.



| | | | | |
|--|----------|-----------------------------|----------------|-----|
| 1 | 9/8/2020 | RESPONSE TO AGENCY COMMENTS | AD | AK |
| REV | DATE | DESCRIPTION | DRN | APP |
| | | | | |
| GRADING PLAN | | | | |
| INTERIM REMEDIATION MEASURE #4 | | | | |
| AMENDMENT #1 ELMIRA, NEW YORK | | | | |
| SIGNATURE 9/25/20 DATE | | | | |
| DESIGN BY: | AK | DATE: | SEPTEMBER 2020 | |
| DRAWN BY: | AD | PROJECT NO.: | MN08321 | |
| CHECKED BY: | TBR | FILE: | MN08321-104 | |
| REVIEWED BY: | PLB | DRAWING NO.: | 4 OF 21 | |
| APPROVED BY: | AK | | | |

CONSTRUCTION DRAWING

I:\columbia\01\ata\cas\PROJECTS\ELMIRA\amendment #1_2020\09\08\MN08321-104.dwg
 brenck - 9/25/2020 12:10 PM



LEGEND

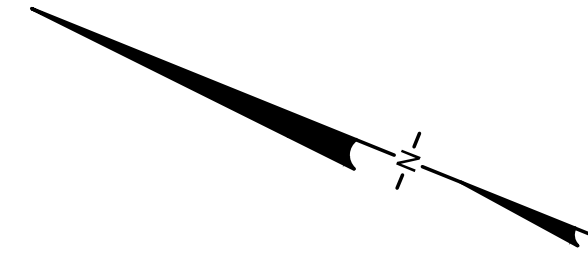
| | | | |
|-----|--------------------------|----------|-------------------------|
| ○ | MANHOLE | ⊕ | HISTORIC SPOT ELEVATION |
| ⊕ | CATCH BASIN | --- | HISTORIC STRUCTURE |
| --- | CULVERT PIPE | ▬ | EXISTING FOOTING |
| ○ | CHAIN LINK FENCE | 841.10 ○ | PROPOSED SPOT ELEVATION |
| ⊕ | WOODEN FENCE | | |
| --- | PROPERTY LINE | | |
| --- | EXISTING CONTOUR LINE | | |
| --- | EDGE OF WATER | | |
| --- | EDGE OF WOODS OR BRUSH | | |
| --- | BURIED ELECTRIC CABLE | | |
| --- | SANITARY SEWER | | |
| --- | STORM SEWER | | |
| --- | NATURAL GAS LINE | | |
| --- | WATER LINE | | |
| --- | EXCAVATION LIMITS | | |
| --- | LIMIT OF DISTURBANCE | | |
| --- | BURIED FIBER OPTIC CABLE | | |
| ⊕ | TREE | | |

4 PLAN
- EXCAVATION SUPPORT

- NOTES:
1. SEE SHEET 4 FOR GRADING PLAN.
 2. SEE SECTION 31 15 00 FOR REQUIREMENTS REGARDING SUPPORT OF EXCAVATION.
 3. CONTRACTOR SHALL PROVIDE DESIGN OF ENVIRONMENTAL SLIDE RAIL SYSTEM PREPARED BY A NYS PROFESSIONAL ENGINEER.
 4. SEE SHEET 8 FOR STORM DRAIN MAINTENANCE.

| | | | | |
|--|----------|--|-----|-----|
| 1 | 9/8/2020 | RESPONSE TO AGENCY COMMENTS | AD | AK |
| REV | DATE | DESCRIPTION | DRN | APP |
| | | | | |
| TITLE: SUPPORT OF EXCAVATION PLAN | | | | |
| PROJECT: INTERIM REMEDIATION MEASURE #4 | | | | |
| SITE: AMENDMENT #1 ELMIRA, NEW YORK | | | | |
| SIGNATURE 9/25/20 DATE | | DESIGN BY: AK DATE: SEPTEMBER 2020 DRAWN BY: JWO PROJECT NO.: MN08321 CHECKED BY: TBR FILE: MN08321-105 REVIEWED BY: PLB DRAWING NO.: APPROVED BY: AK 5 OF 21 | | |

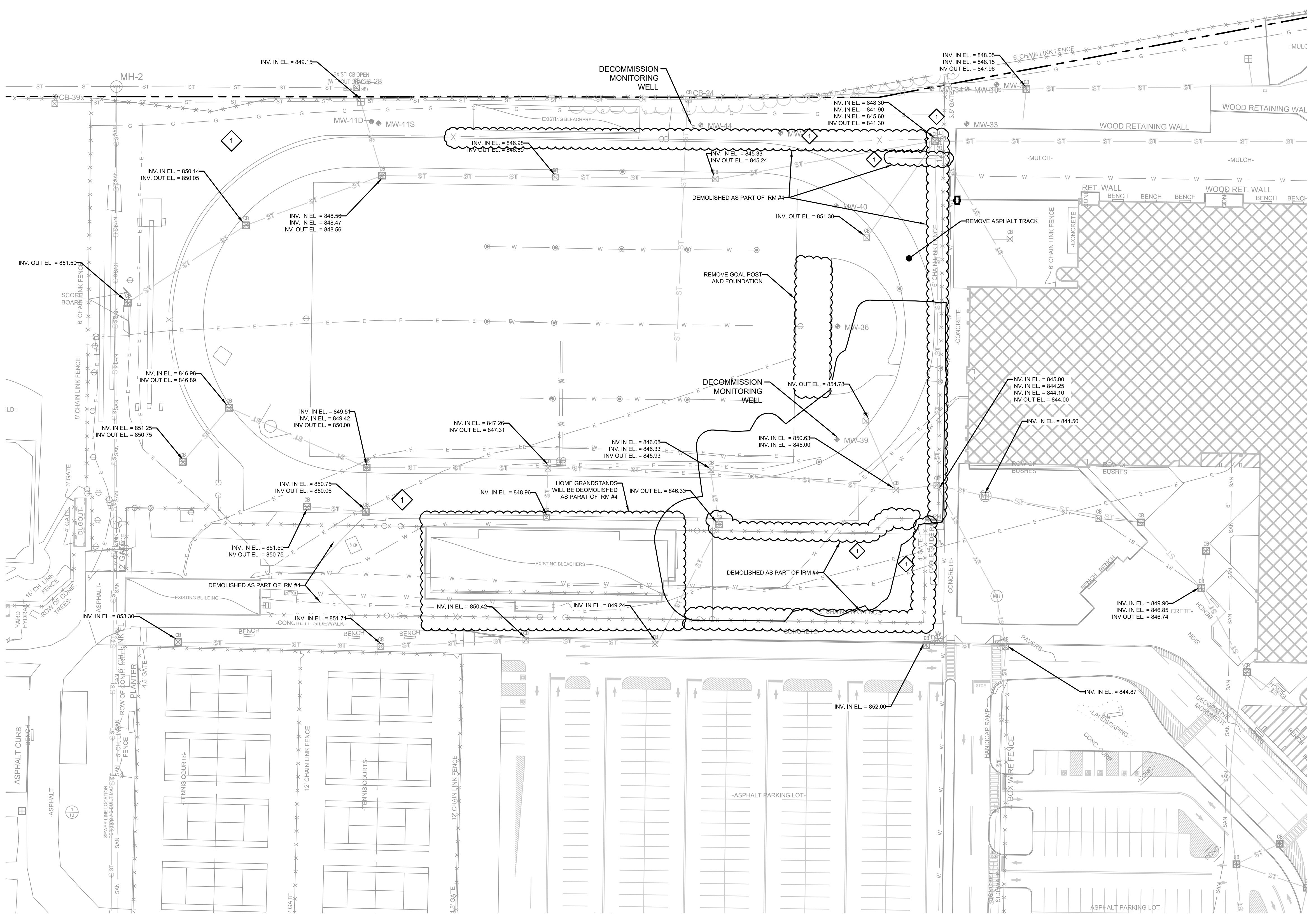
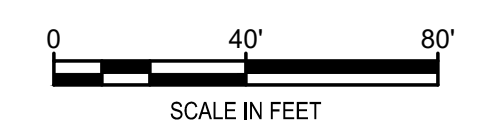
CONSTRUCTION DRAWING



LEGEND

| | |
|--|--------------------------|
| | MANHOLE |
| | CATCH BASIN |
| | CULVERT PIPE |
| | CHAIN LINK FENCE |
| | WOODEN FENCE |
| | PROPERTY LINE |
| | EXISTING CONTOUR LINE |
| | EDGE OF WATER |
| | EDGE OF WOODS OR BRUSH |
| | BURIED ELECTRIC CABLE |
| | SANITARY SEWER |
| | STORM SEWER |
| | NATURAL GAS LINE |
| | WATER LINE |
| | EXCAVATION LIMITS |
| | LIMIT OF DISTURBANCE |
| | BURIED FIBER OPTIC CABLE |
| | TREE |

DEMOLITION NOTES:
 REMOVE CHAIN-LINKED FENCE.

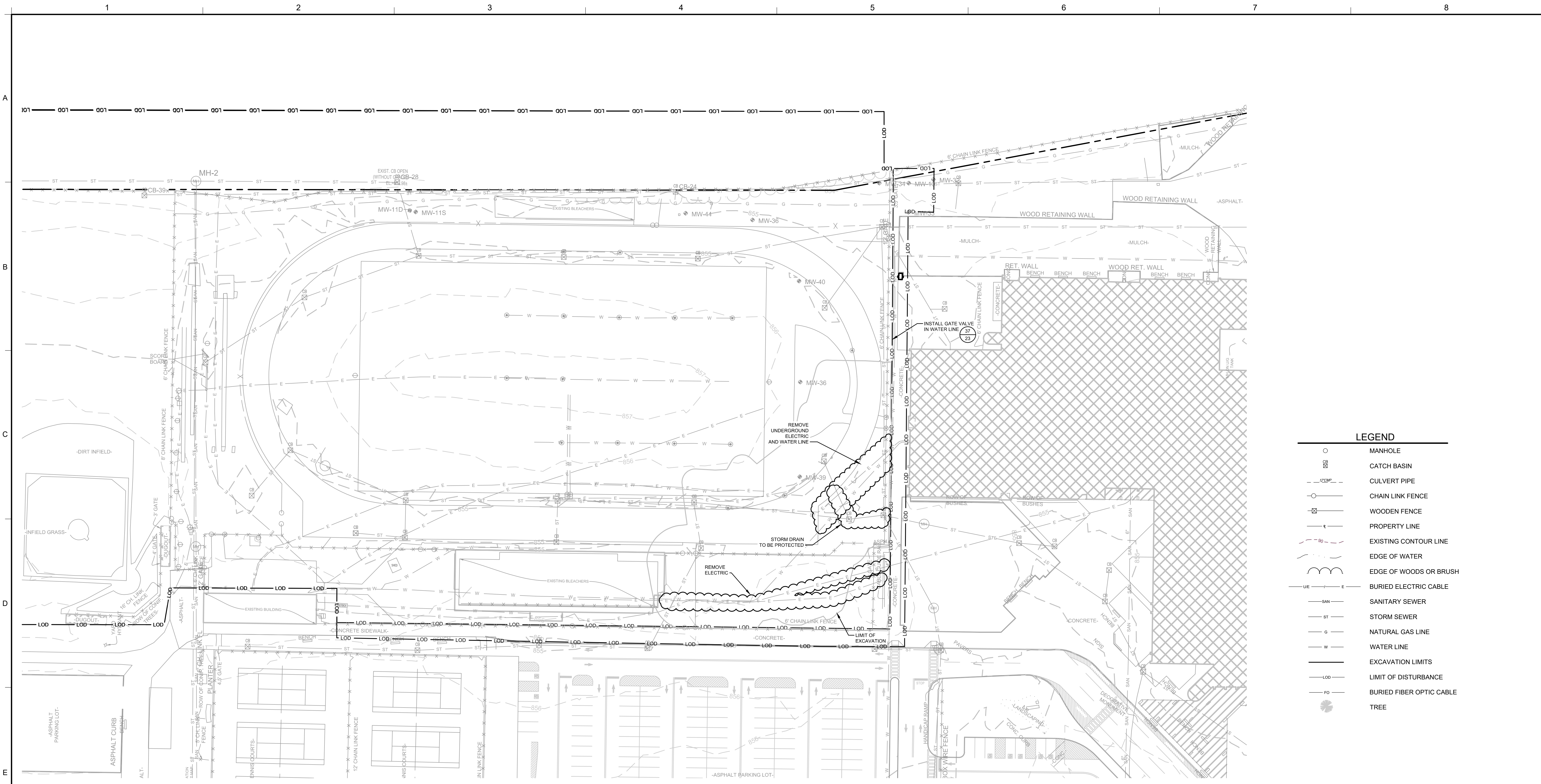


5 DETAIL DEMOLITION

CONSTRUCTION DRAWING

| | | | | |
|---------------------------------------|----------|--|-----|-----|
| 1 | 9/8/2020 | RESPONSE TO AGENCY COMMENTS | AD | AK |
| REV | DATE | DESCRIPTION | DRN | APP |
| | | <p><i>an affiliate of Geosynic Consultants</i></p> | | |
| DEMOLITION PLAN | | | | |
| INTERIM REMEDIATION MEASURE #4 | | | | |
| AMENDMENT #1 | | | | |
| ELMIRA, NEW YORK | | | | |
| DESIGN BY: AK | | DATE: SEPTEMBER 2020 | | |
| DRAWN BY: JWO | | PROJECT NO.: MN08321 | | |
| CHECKED BY: TBR | | FILE: MN08321-106 | | |
| REVIEWED BY: PLB | | DRAWING NO.: | | |
| APPROVED BY: AK | | 6 OF 21 | | |
| SIGNATURE 9/25/20 DATE | | | | |

I:\columbia-01\data\cadd\PROJECTS\unisy - elmira ny (mn08321)\irm #4 amendment #1_2020.09.09\MN08321-106.dwg
 bfrick - 9/25/2020 12:12 PM

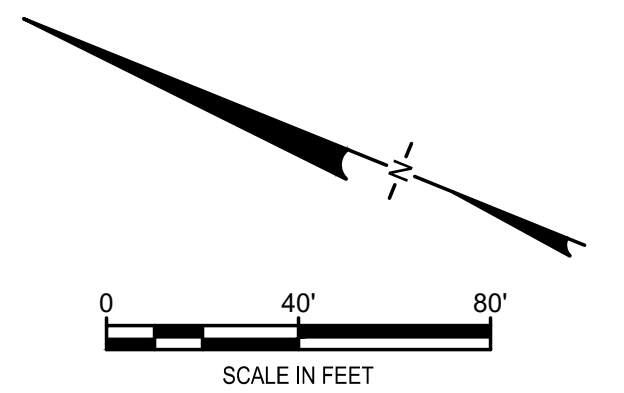


LEGEND



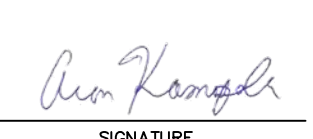

- MANHOLE
- ⊕ CATCH BASIN
- CULVERT PIPE
- ⊗ CHAIN LINK FENCE
- ⊠ WOODEN FENCE
- PROPERTY LINE
- - - EXISTING CONTOUR LINE
- ~ EDGE OF WATER
- ~ EDGE OF WOODS OR BRUSH
- BURIED ELECTRIC CABLE
- SANITARY SEWER
- STORM SEWER
- NATURAL GAS LINE
- WATER LINE
- EXCAVATION LIMITS
- LIMIT OF DISTURBANCE
- BURIED FIBER OPTIC CABLE
- TREE

- NOTES:**
- SEE DRAWING 8 FOR STORMWATER BYPASS.
 - EXISTING UTILITIES SHOWN HAVE BEEN LOCATED BASED ON AVAILABLE RECORD DRAWINGS. THE LOCATIONS SHOWN SHOULD BE CONSIDERED APPROXIMATE. CONTRACTOR SHALL UNCOVER EXISTING UTILITIES TO CONFIRM THEIR LOCATION, TYPE AND SIZE PRIOR TO INITIATING SOIL EXCAVATION OR DRIVING SHEET PILES.
 - UTILITY REMOVAL WILL BE LIMITED TO UTILITIES UNCOVERED DURING EXCAVATION SHOWN ON DRAWING 4.
 - UTILITIES WITHIN THE EXCAVATION SHALL BE REMOVED AND CHARACTERIZED FOR OFF-SITE DISPOSAL DURING EXCAVATION AND REPLACED IN-KIND AS THE EXCAVATION IS BACKFILLED. CONTRACTOR IS RESPONSIBLE TO CONFIRM THAT WATER AND ELECTRIC SERVICES ARE SHUT OFF PRIOR TO REMOVAL.
 - CUT AND TEMPORARILY CAP UTILITIES IN A MANNER THAT ALLOWS FOR RE-CONNECTION OF IN-KIND REPLACEMENT UTILITIES DURING BACKFILLING.
 - ALL ELECTRIC UTILITIES TO BE REMOVED SHALL BE REMOVED BACK TO AND FROM THE ELECTRICAL PANEL. CIRCUIT BREAKERS SHALL BE REMOVED AND RETURNED TO ECSD. BLANKS SHALL BE INSTALLED IN PLACE OF REMOVED CIRCUIT BREAKERS AND THE PANEL SCHEDULE SHALL BE UPDATED.

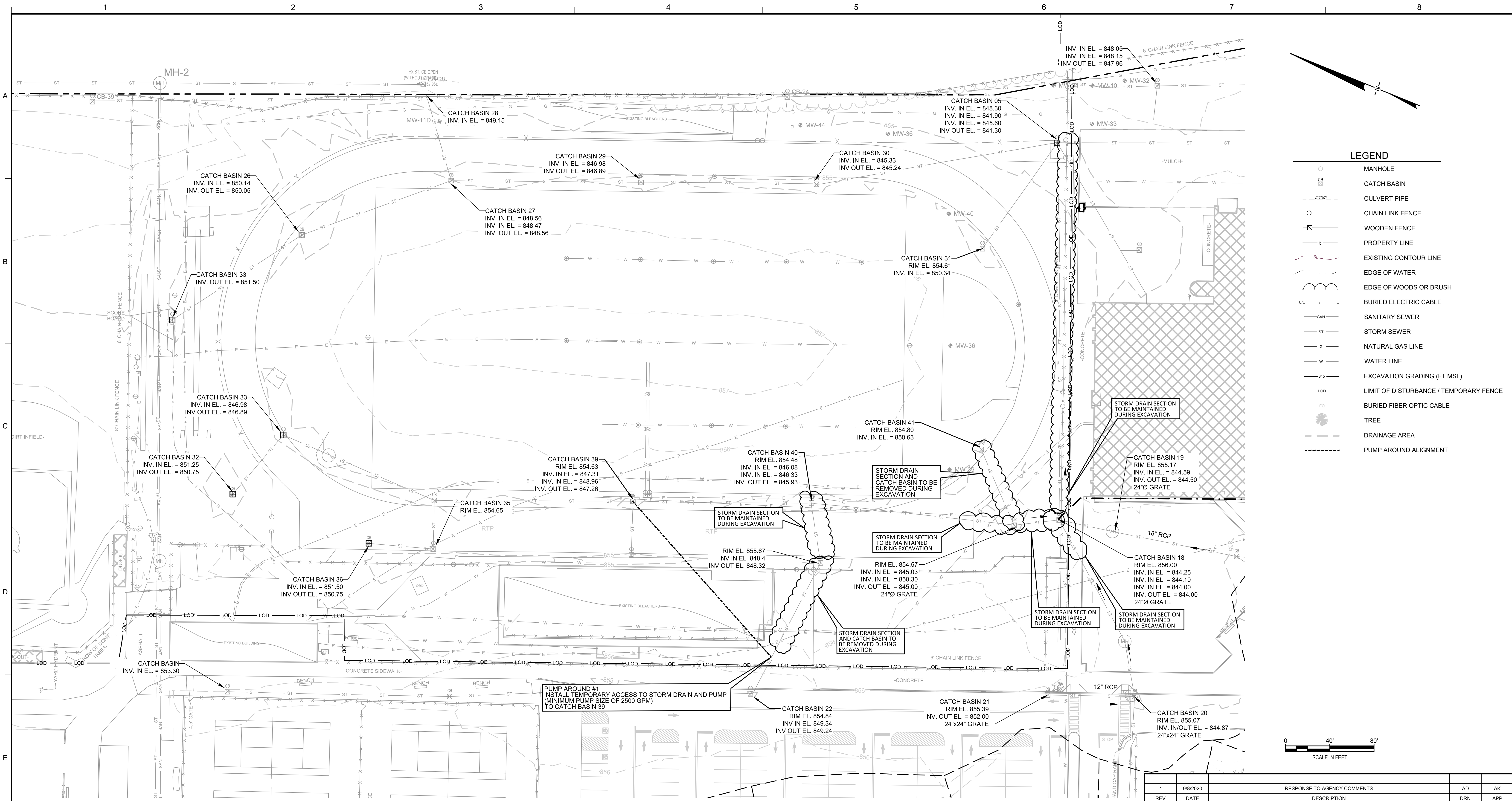
**6 PLAN
UTILITY ABANDONMENT**



CONSTRUCTION DRAWING

| | | | | |
|---|----------|---|-----|-----|
| 1 | 9/8/2020 | RESPONSE TO AGENCY COMMENTS | AD | AK |
| REV | DATE | DESCRIPTION | DRN | APP |
|   | | | | |
| TITLES: UTILITES REMOVAL | | | | |
| PROJECT: INTERIM REMEDIATION MEASURE #4 | | | | |
| SITE: AMENDMENT #1 ELMIRA, NEW YORK | | | | |
| DESIGN BY: AK | | DATE: SEPTEMBER 2020 | | |
| DRAWN BY: JWO | | PROJECT NO.: MN08321 | | |
| CHECKED BY: TBR | | FILE: MN08321-107 | | |
| REVIEWED BY: PLB | | DRAWING NO.: | | |
| APPROVED BY: AK | | 7 OF 21 | | |
|  SIGNATURE 9/25/20 DATE | |  | | |

I:\columbia-01\data\cadd\PROJECTS\ELMIRA - elmira ny (mn08321)\m4 amendment #1_2020.09.09\MN08321-107.dwg
 bferrek - 9/25/2020 12:13 PM



- NOTES:**
- EXISTING UTILITIES SHOWN HAVE BEEN LOCATED BASED ON AVAILABLE RECORD DRAWINGS. THE LOCATIONS SHOWN SHOULD BE CONSIDERED APPROXIMATE. CONTRACTOR SHALL UNCOVER EXISTING UTILITIES TO CONFIRM THEIR LOCATION, TYPE AND SIZE PRIOR TO INITIATING SOIL EXCAVATION OR DRIVING SHEET PILES.
 - UTILITY REMOVAL WILL BE LIMITED TO UTILITIES UNCOVERED DURING EXCAVATION.
 - UTILITIES WITHIN THE EXCAVATION SHALL BE REMOVED AND CHARACTERIZED FOR OFF-SITE DISPOSAL DURING EXCAVATION AND REPLACED IN-KIND AS THE EXCAVATION IS BACKFILLED. CONTRACTOR IS RESPONSIBLE TO CONFIRM THAT WATER AND ELECTRIC SERVICES ARE SHUT OFF PRIOR TO REMOVAL.
 - CAP STORM DRAIN SECTIONS THAT REMAIN IN PLACE AFTER STORM DRAIN SECTION REMOVAL DURING EXCAVATION.

7 PLAN STORM DRAIN SYSTEM

PUMP AROUND #1
INSTALL TEMPORARY ACCESS TO STORM DRAIN AND PUMP (MINIMUM PUMP SIZE OF 2500 GPM) TO CATCH BASIN 39

STORM DRAIN SECTION TO BE MAINTAINED DURING EXCAVATION

STORM DRAIN SECTION TO BE MAINTAINED DURING EXCAVATION

STORM DRAIN SECTION TO BE MAINTAINED DURING EXCAVATION

STORM DRAIN SECTION TO BE MAINTAINED DURING EXCAVATION

STORM DRAIN SECTION TO BE MAINTAINED DURING EXCAVATION

STORM DRAIN SECTION TO BE MAINTAINED DURING EXCAVATION

STORM DRAIN SECTION TO BE MAINTAINED DURING EXCAVATION

| REV | DATE | DESCRIPTION | AD | AK |
|-----|----------|-----------------------------|-----|-----|
| 1 | 9/8/2020 | RESPONSE TO AGENCY COMMENTS | AD | AK |
| | | | DRN | APP |

B&B Engineers & Geologists
of new york, p.c.
an affiliate of Geosynic Consultants

UNISYS

TITLE: STORM DRAIN MAINTENANCE

PROJECT: INTERIM REMEDIATION MEASURE #4

SITE: AMENDMENT #1
ELMIRA, NEW YORK

DESIGN BY: JSW DATE: SEPTEMBER 2020

DRAWN BY: JSW PROJECT NO.: MN0832I

CHECKED BY: AK FILE: MN0832I-108

REVIEWED BY: CHP DRAWING NO.: 8 OF 21

APPROVED BY: AK

9/25/20 DATE

CONSTRUCTION DRAWING

I:\columba\01\data\cad\PROJECTS\unisy - elmira ny (mn0832i)\m4 amendment #1_2020_09_09\MN0832I-108.dwg
bferrek - 9/25/2020 12:14 PM