

# Construction Completion Report

*251 HOMER STREET REDEVELOPMENT SITE  
BCP SITE NO. C905037  
OLEAN, NEW YORK*



June 2021

0491-020-001

Prepared For:

Olean Solar Land LLC  
&  
Homeridae LLC

Prepared By:



---

# CONSTRUCTION COMPLETION REPORT FOR 251 HOMER STREET REDEVELOPMENT SITE

**BCP Site No. C905037  
Olean, New York**

---

June 2021

0491-020-001

Prepared for:

**Olean Solar Land LLC  
&  
Homeridae LLC**

Prepared By:



Benchmark Environmental Engineering &  
Science, PLLC  
2558 Hamburg Turnpike, Suite 300  
Buffalo, NY 14218  
(716) 856-0599

In Association With:



TurnKey Environmental Restoration, LLC  
2558 Hamburg Turnpike, Suite 300  
Buffalo, NY 14218  
(716) 856-0635

## CERTIFICATION

I, Lori E. Riker, P.E., certify that I am currently a NYS registered professional engineer and that this Construction Completion Report (CCR) for the 251 Homer Street Redevelopment Site in Olean, NY was prepared in accordance with all applicable statutes and regulations and in substantial conformance with the DER Technical Guidance for Site Investigation and Remediation (DER-10).

Date: 6/7/21

SEAL:



**CONSTRUCTION COMPLETION REPORT  
FOR  
251 HOMER STREET REDEVELOPMENT SITE  
BCP SITE NO. C905037  
OLEAN, NEW YORK**

**Table of Contents**

<b>1.0</b>	<b>INTRODUCTION.....</b>	<b>1</b>
1.1	Background.....	1
1.1.1	<i>Site History</i> .....	1
1.1.2	<i>Redevelopment Work Plan</i> .....	2
1.2	Purpose and Scope .....	3
<b>2.0</b>	<b>DESCRIPTION OF CONSTRUCTION ACTIONS PERFORMED.....</b>	<b>4</b>
2.1	Remedial Objectives.....	4
2.2	Governing Documents .....	4
2.3	General Site and Nuisance Controls.....	4
2.4	Community Air Monitoring Results .....	5
2.5	Redevelopment Construction Elements .....	5
2.5.1	<i>Contractors and Consultants</i> .....	5
2.5.2	<i>Description of Construction Activity</i> .....	5
2.5.3	<i>Completed Construction</i> .....	5
2.5.4	<i>Cover System Repair</i> .....	6
2.6	Contamination Remaining at the Site.....	7
2.7	Issues Encountered and Corrective Actions .....	7
2.8	Deviations.....	7
<b>3.0</b>	<b>REFERENCES .....</b>	<b>8</b>



**CONSTRUCTION COMPLETION REPORT  
FOR  
251 HOMER STREET REDEVELOPMENT SITE  
BCP SITE NO. C905037  
OLEAN, NEW YORK**

**LIST OF FIGURES**

---

Figure 1	Site Location and Vicinity Map
Figure 2	Site Plan (Post-Redevelopment)
Figure 3	Site Redevelopment Record Drawing Solar Plant
Figure 4	Site Cover Restoration

**APPENDICES**

---

Appendix A	Photographic Log
Appendix B	Import Documentation

## 1.0 INTRODUCTION

This Construction Completion Report (CCR) documents redevelopment work completed under the New York State Department of Environmental Conservation (NYSDEC)-approved July 2018 Solar Facility Development Plan (Ref. 1) for the 251 Homer Street Redevelopment Site in Olean, New York (see Figures 1 and 2) (herein after referred to as the “Site”).

The Site totals approximately 16.68 acres and was previously remediated by Benson Construction and Development, LLC (Benson) under the NYSDEC Brownfield Cleanup Program (BCP, Site No. C905037). A Certificate of Completion (COC) was issued by the NYSDEC to Olean Gateway on December 2, 2016 after the review and approval of the Final Engineering Report (FER; Ref. 2) and the implementation of a Site Management Plan (SMP; Ref. 3).

### 1.1 Background

#### *1.1.1 Site History*

The 251 Homer Street Redevelopment Site was formerly part of the Socony-Vacuum Oil Company Refinery. The property and surrounding area operated as an oil refinery under several different entities between the 1880s and 1950s. Vacuum Oil merged with the Standard Oil Company, Inc. and in 1934 changed its name to Socony-Vacuum Oil Company (Socony); Socony operated until approximately 1954. These companies were predecessors of ExxonMobil Oil Corporation. The Socony refinery was divided into three sections and the #3 Works was the area where most of the refining took place. The 115-acre refinery was purchased by Mr. CJ Simpson in 1954 and ultimately became the Swan Finch Oil Company Olean Industries, which used the refinery tanks for storage of grain. In 1958, Swan Finch declared bankruptcy and in 1964 sold the facility to Felmont Oil, who subsequently removed the old refinery tanks and buildings. Felmont Oil sold the property to the County of Cattaraugus IDA in 1981, who in turn sold it to Benson Construction and Development, LLC (Benson) in 2005.

Benson entered into a Brownfield Cleanup Agreement (BCA) (BCP Site No. C905037) with the NYSDEC on April 20, 2010 to investigate and remediate the approximate 16.68-acre property comprised of one tax parcel identified as 251 Homer

Street (SBL#94.032-1-2.11) located in the City of Olean, Cattaraugus County, New York and referred to as the 251 Homer Street Redevelopment Site (see Figure 1). On July 3, 2014, Homer Street Properties, LLC submitted a BCP application amendment to be added as an additional Applicant (Volunteer) to the existing BCA. On August 30, 2016, Olean Solar Land LLC (as future property owner) and Homeridae LLC (as future lessee) submitted a BCP application amendment to be added as additional applicants (volunteers) to the existing BCA. A 60-day Advance Notification of Change in Ownership was submitted September 1, 2016 to notify the NYSDEC that Olean Solar Land LLC will be the new property owner. Homer Street Properties, LLC/Benson Construction and Development, LLC sold the property to Olean Solar Land LLC on June 28, 2018. A post-transfer of property notice was submitted to NYSDEC on July 12, 2018. Since both parties were named as Volunteers on the BCA prior to the sale, no COC transfer was necessary.

The Site was subdivided per approval by the City of Olean Common Council on December 22, 2015. The subdivision lot lines were amended as approved by the Common Council on November 22, 2016. The Site parcel was divided on the tax maps after the sale took place in June 2018. The original parcel had tax map ID (94.032-1-2.11) was split into two parcels (94.032-1-2.11 and 94.032-1-2.12); however, the overall Site boundaries did not change. Figure 2 shows the two parcels addressed as 231 and 251 Homer Street.

### ***1.1.2 Redevelopment Work Plan***

The proposed redevelopment activities were presented in the NYSDEC-approved July 2018 Solar Facility Development Plan (Ref. 1) prepared by Benchmark Environmental Engineering & Science, PLLC in association with TurnKey Environmental Restoration, LLC (Benchmark-TurnKey). In general, the planned scope of remedial activities outlined included:

- Installing 11,808 solar modules and associated rack systems with minimal excavation through the cover system
- Pouring two slab-on-grade transformer/inverter pads
- Connecting to the off-site National Grid system by below grade conduit at the transformer pad
- Extending the 30-inch storm drain discharging to Two Mile Creek
- Surveying cover system following construction

- Repairing the cover system

## 1.2 Purpose and Scope

This CCR has been prepared by Benchmark-TurnKey using guidance from Section 5.8 of DER-10 (Ref. 4) and includes:

- A description of the construction activities performed.
- A description of any problems encountered, deviations from the Development Plan, and associated corrective measures taken; and other pertinent information necessary to document that the Site activities were carried out in accordance with the July 2018 Solar Facility Development Plan.
- A Site map showing the redeveloped area.
- Copies of daily field activity notes and, if applicable, problem identification and corrective measure reports.
- Copies of import material receipts
- A certification by a licensed NYS Professional Engineer in accordance with Section 1.5 of DER-10.

## 2.0 DESCRIPTION OF CONSTRUCTION ACTIONS PERFORMED

### 2.1 Remedial Objectives

Redevelopment construction activities completed at the Site were conducted in accordance with the NYSDEC-approved Development Plan and SMP. Below is a summary of the work performed. Appendix A is a photographic log documenting the work.

### 2.2 Governing Documents

The governing document for redevelopment activities is:

- Homeridae Solar Facility Development Plan, 231-251 Homer Street Site, Olean NY, BCP Site No. C915137, prepared by Benchmark-TurnKey, July 18, 2018.

### 2.3 General Site and Nuisance Controls

Requirements for controls were contained in the July 2018 Storm Water Pollution Prevention Plan (SWPPP, Ref. 5) that was developed for the redevelopment work. A Notice of Intent (NOI) was submitted for the redevelopment activities on July 3, 2018 by Homeridae, LLC. The NOI was deemed accurate and complete, and the SWPPP was identified to be in substantive conformance with the requirements in the SPDES General Permit for Stormwater discharges (GP-0-15-002) in a letter from NYSDEC to Homeridae, LLC dated July 5, 2018. The Permit identification number for the Site is NYR11D898.

The following controls were implemented during construction in accordance with the SWPPP to prevent storm water runoff and erosion during and after Site redevelopment activities:

- Use of concrete wash out area
- Installation of perimeter silt fences
- Dust control by watering dry soils

Benchmark-TurnKey's NYSDEC-qualified inspector conducted Site inspections in accordance with SWPPP requirements during redevelopment activities and final cover system restoration. SWPPP inspection logs are maintained in a binder at the Site.

In July 2020, Benchmark-TurnKey inspected the Site and confirmed that all areas of disturbance achieved final stabilization and all sediment control measures were removed. On

March 5, 2021, Benchmark-TurnKey submitted the Notice of Termination (NOT) and ceased SWPPP inspections.

## 2.4 Community Air Monitoring Results

Real-time community air monitoring was not performed during redevelopment activities since soil/fill materials were not disturbed. The solar panels were erected on a rack system that sits on the finished cover and the ballast at the feet of the racks were supported by above grade concrete supports. The electrical conduits were installed within the soil cover materials.

## 2.5 Redevelopment Construction Elements

### 2.5.1 *Contractors and Consultants*

Homeridae, LLC contracted Benchmark-TurnKey to assist with implementation of the SMP during redevelopment of the Site from August 2018 to May 2020. Homeridae, LLC directly contracted the following subcontractors for Site preparation and redevelopment construction activities:

- **Primary Civil/Site Contractor:** Benson Construction and Development, LLC
- **Primary Electrical Contractor:** CIR Electrical
- **Site/Electrical Subcontractor:** Schuler-Haas Electric Corp.

### 2.5.2 *Description of Construction Activity*

The Homeridae solar photovoltaic power generation system includes approximately 11,808 solar modules and associated infrastructure for in-feed to the nearby electrical service on Franklin Street, City of Olean, New York (see Figures 1 and 2). The project involved redevelopment of approximately 15.29 acres of the total 16.68 acres of previously vacant industrial property that was remediated under the BCP. The City of Olean issued a building permit for installation of the 4.093 MW ground mounted solar photovoltaic (PV) system on June 25, 2018.

### 2.5.3 *Completed Construction*

A chain-link fence was installed with driven posts around the perimeter. The 30-inch storm drain discharging to Two Mile Creek was extended to beyond the fence and backfilled

with crushed bank run gravel from Giardini Brothers Gargoyle Road Plant to accommodate the on-site access road along the new fencing adjacent to the Creek (performed by Benson Construction). At the confluence of the 30-inch storm drains along the northeast property boundary, a pre-cast reinforced concrete chamber with steel grate was set in the depression, the pipes were extended into the new chamber, and the exterior of the chamber was backfilled with crushed bank run gravel. A total of 2,555 ton of gravel was imported from Giardini Construction's Gargoyle Road Plant. The import material had less than 10% of the crushed gravel pass the No. 80 sieve so no chemical testing of the material was required per DER-10. The gravel was spread with a dozer to a nominal thickness of 12 inches.

The solar panels were erected on a rack system that sits on top of the finished cover system. The ballasts at the feet of the racks were secured with poured in-place concrete. Two small slab-on-grade transformer/inverter pads were poured. The electrical conduit was placed within the cover materials and did not breach the demarcation layer. The conduit from the electrical pad along the northeast property boundary was installed at grade since the cover soil thickness did not allow a 2-foot deep installation. The conduit was encased in concrete and covered with soil. At the access road, this conduit drops to approximately 2 feet below grade and runs along the access road off-site through the tunnel under I-86 to Franklin Street where it connects to the National Grid system. Figure 3 illustrates these constructed features. The solar facility became operational the week of May 13, 2019.

#### ***2.5.4 Cover System Repair***

Figure 7 in the FER presents the elevations surveyed before and after cover system placement along with cover thickness. In accordance with the July 2018 Development Plan, a soil cover survey was completed in October 2018 to compare elevations measured after cover placement and following construction to determine where final cover system restoration was required. As shown on Figure 3, the area between the billboard and the equipment pad required additional cover soil. The cover system repairs were initiated in August 2019 with a request to import soil from Peck's Construction Yard in Allegany, NY that was approved by NYSDEC on August 20, 2019. Benson placed 968 cubic yards of soil in September 2019. A total of 18.05 ton of cover material imported from Giardini Bros. Construction was placed in the vehicle ruts between the solar panels. Appendix B includes the formal import request, summary of data, analytical data package, and import receipts.

On April 17, 2020, Benchmark-TurnKey measured the cover soil thickness to verify a minimum of 12 inches; however, several areas still did not meet the 12-inch requirement. Therefore, Benson placed an additional 134.55 ton of cover material obtained from Giardini Bros. Construction on April 30 and May 1, 2020. On May 4, 2020, Benchmark-TurnKey confirmed a 12-inch thickness in all areas as shown on Figure 4. The area was seeded by Benchmark-TurnKey in July 2020 and final stabilization was confirmed in November 2020.

## **2.6 Contamination Remaining at the Site**

Since residual contaminated soil/fill and groundwater remains on-site beneath the cover system, EC/ICs outlined in the Environmental Easement are required to protect public health and the environment. Long-term management of these EC/ICs and residual contamination will be performed under the NYSDEC-approved SMP.

## **2.7 Issues Encountered and Corrective Actions**

The only issue and corrective action undertaken during implementation of the above-described redevelopment activities was the placement of additional cover soil in the area between the billboard and equipment pad.

## **2.8 Deviations**

There were no deviations from the Development Plan or SMP during this project.

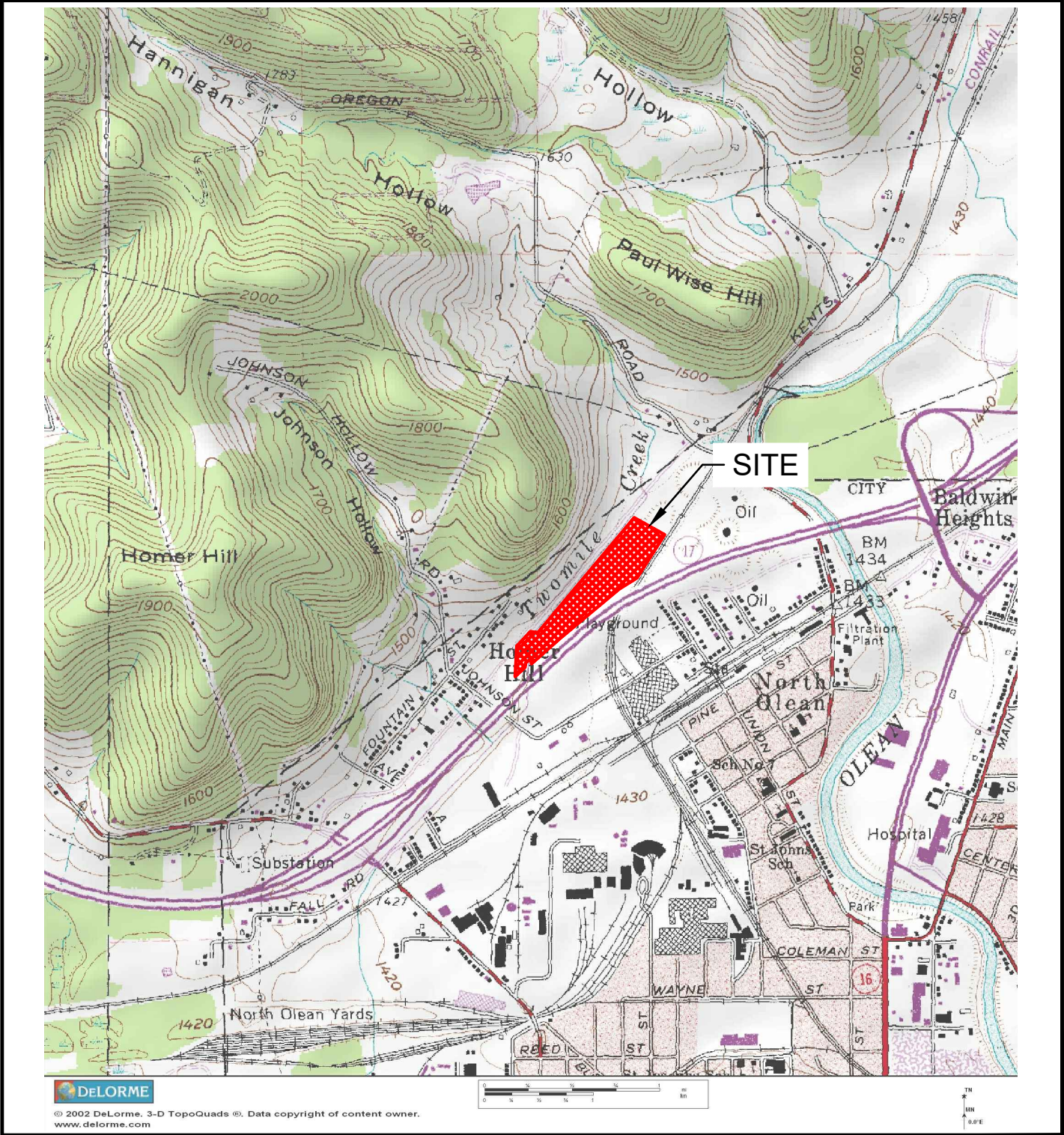


### 3.0 REFERENCES

1. Benchmark Environmental Engineering & Science, PLLC in association with TurnKey Environmental Restoration, LLC. *Homeridae Solar Facility Development Plan (Revised), 231-251 Homer Street Site, Olean, NY, BCP Site No. C905037*. July 18, 2018.
2. Benchmark Environmental Engineering & Science, PLLC in association with TurnKey Environmental Restoration, LLC. *Final Engineering Report, 251 Homer Street Redevelopment, NYSDEC Site Number C905037, Olean, NY*. October 2016.
3. Benchmark Environmental Engineering & Science, PLLC in association with TurnKey Environmental Restoration, LLC. *Site Management Plan, 251 Homer Street Redevelopment, NYSDEC Site Number C905037, Olean, NY*. August 2015; revised September 2016.
4. New York State Department of Environmental Conservation. *DER-10/Technical Guidance for Site Investigation and Remediation*. May 2010
5. Benchmark Environmental Engineering & Science, PLLC in association with TurnKey Environmental Restoration, LLC. *Storm Water Pollution Prevention Plan, Planned Solar Photovoltaic Power Generation System, 231-251 Homer Street Site, Olean, NY, BCP Site No. C905037*. July 2018.

## FIGURES

FIGURE 1



2558 HAMBURG TURNPIKE, SUITE 300, BUFFALO, NY 14218, (716) 856-0599



## SITE LOCATION AND VICINITY MAP

### CONSTRUCTION COMPLETION REPORT

251 HOMER STREET REDEVELOPMENT SITE  
BCP SITE NO. C905037  
OLEAN, NEW YORK

PREPARED FOR

OLEAN SOLAR LAND LLC AND HOMERIDAE LLC

PROJECT NO.: 0491-019-001

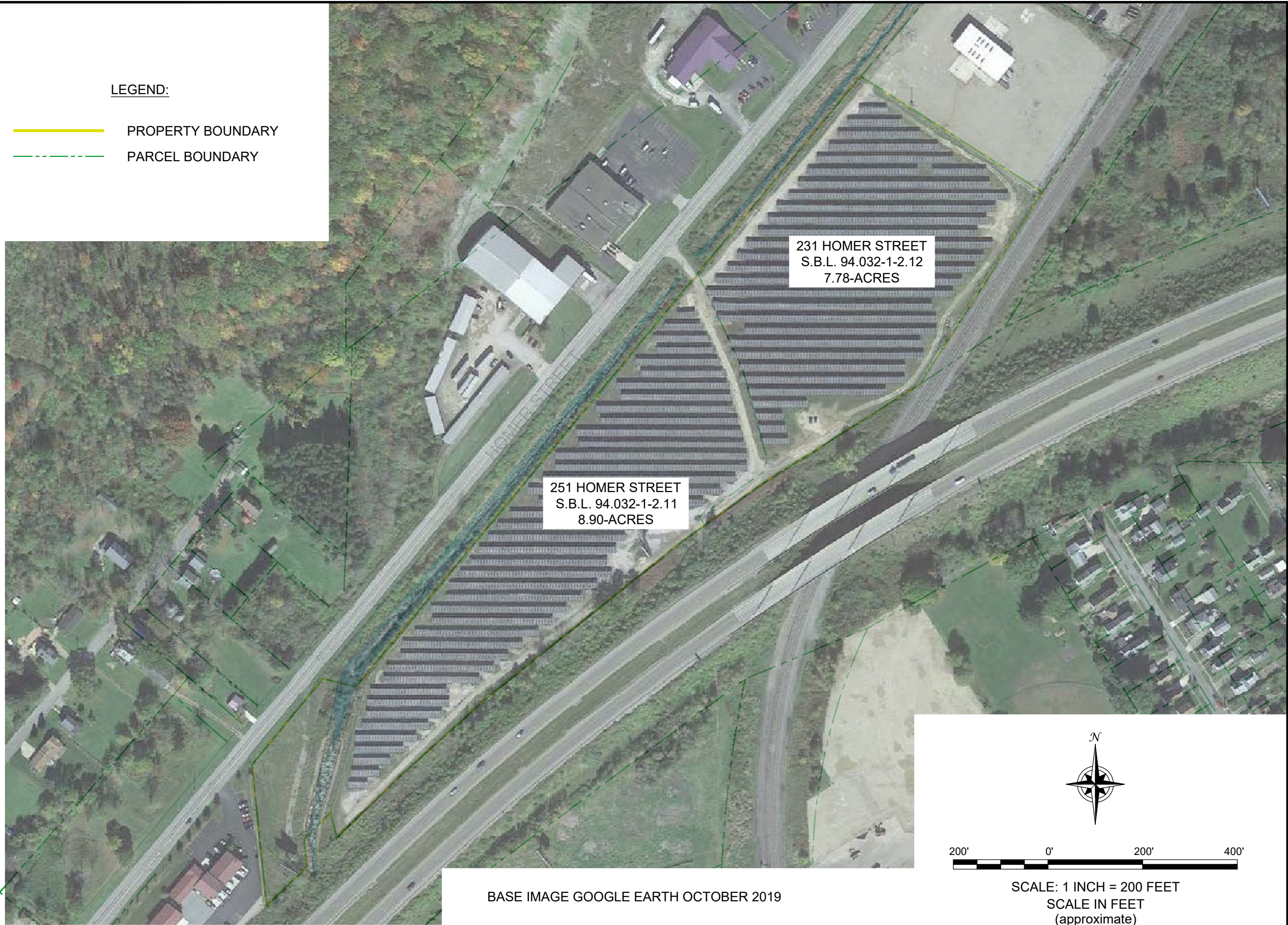
DATE: JULY 2020

DRAFTED BY: RFL

**DISCLAIMER:** PROPERTY OF BENCHMARK ENVIRONMENTAL ENGINEERING & SCIENCE, PLLC. & TURNKEY ENVIRONMENTAL RESTORATION, LLC. IMPORTANT: THIS DRAWING PRINT IS LOANED FOR MUTUAL ASSISTANCE AND AS SUCH IS SUBJECT TO RECALL AT ANY TIME. INFORMATION CONTAINED HEREON IS NOT TO BE DISCLOSED OR REPRODUCED IN ANY FORM FOR THE BENEFIT OF PARTIES OTHER THAN NECESSARY SUBCONTRACTORS & SUPPLIERS WITHOUT THE WRITTEN CONSENT OF BENCHMARK ENVIRONMENTAL ENGINEERING & SCIENCE, PLLC & TURNKEY ENVIRONMENTAL RESTORATION, LLC.



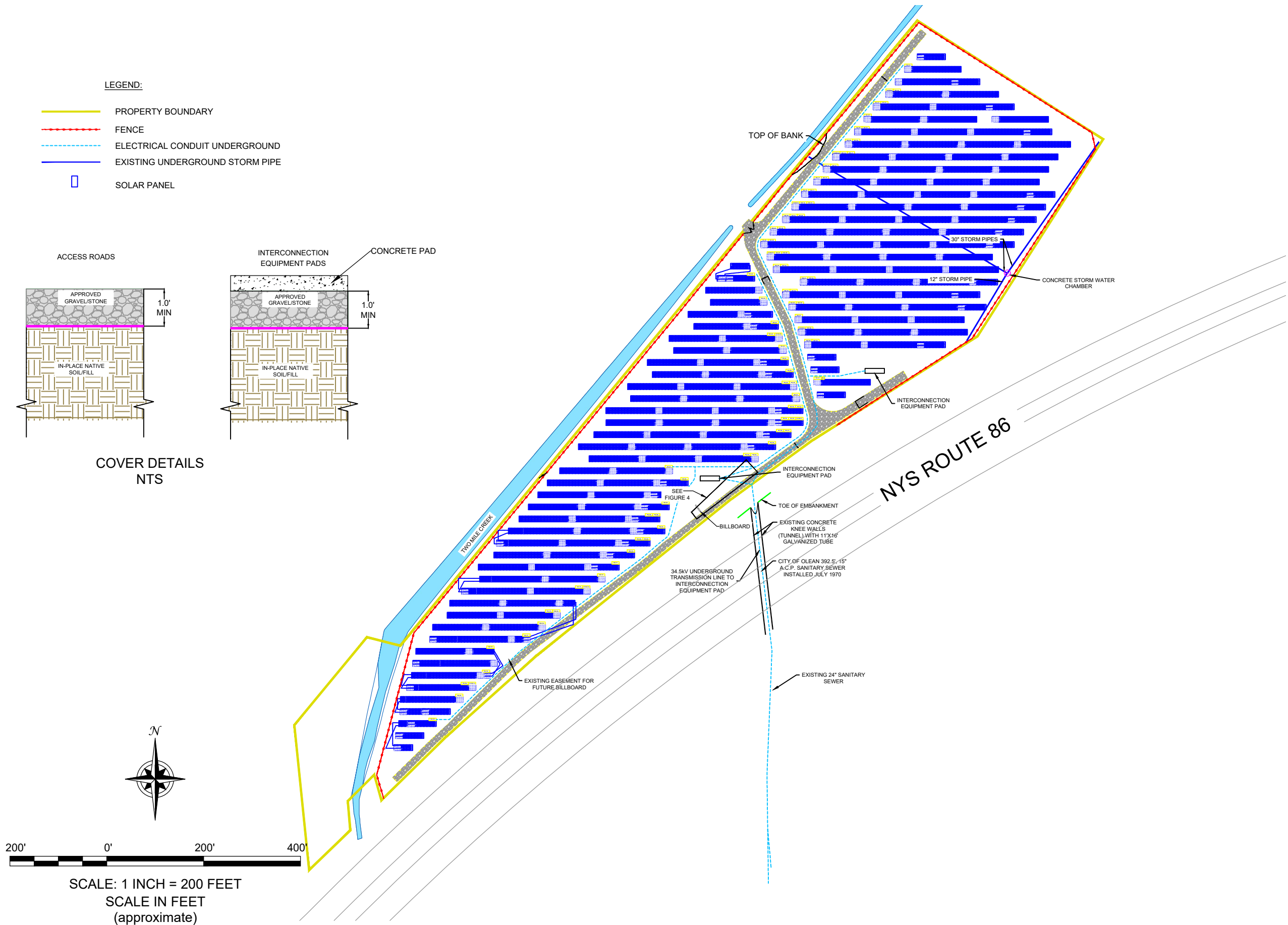
DATE: JULY 2020  
DRAFTED BY: RFL



<b>SITE PLAN (POST-REDEVELOPMENT)</b>	 2558 HAMBURG TURNPIKE SUITE 300 BUFFALO, NY 14218 (716) 856-0599
	JOB NO.: 0491-019-001
CONSTRUCTION COMPLETION REPORT 251 HOMER STREET REDEVELOPMENT SITE OLEAN, NEW YORK PREPARED FOR OLEAN SOLAR LAND LLC AND HOMERIDAE LLC	
<b>FIGURE 2</b>	

DISCLAIMER: PROPERTY OF BENCHMARK ENVIRONMENTAL ENGINEERING & SCIENCE, PLLC. IMPORTANT: THIS DRAWING PRINT IS LOANED FOR MUTUAL ASSISTANCE AND AS SUCH IS SUBJECT TO RECALL AT ANY TIME. INFORMATION CONTAINED HEREON IS NOT TO BE DISCLOSED OR REPRODUCED IN ANY FORM FOR THE BENEFIT OF PARTIES OTHER THAN NECESSARY SUBCONTRACTORS & SUPPLIERS WITHOUT THE WRITTEN CONSENT OF BENCHMARK ENVIRONMENTAL ENGINEERING & SCIENCE, PLLC.





**SITE REDEVELOPMENT RECORD DRAWING**  
**SOLAR PLANT**

CONSTRUCTION COMPLETION REPORT  
231-251 HOMER STREET SITE  
OLEAN, NEW YORK

PREPARED FOR

OLEAN SOLAR LAND LLC AND HOMERIDAE, LLC

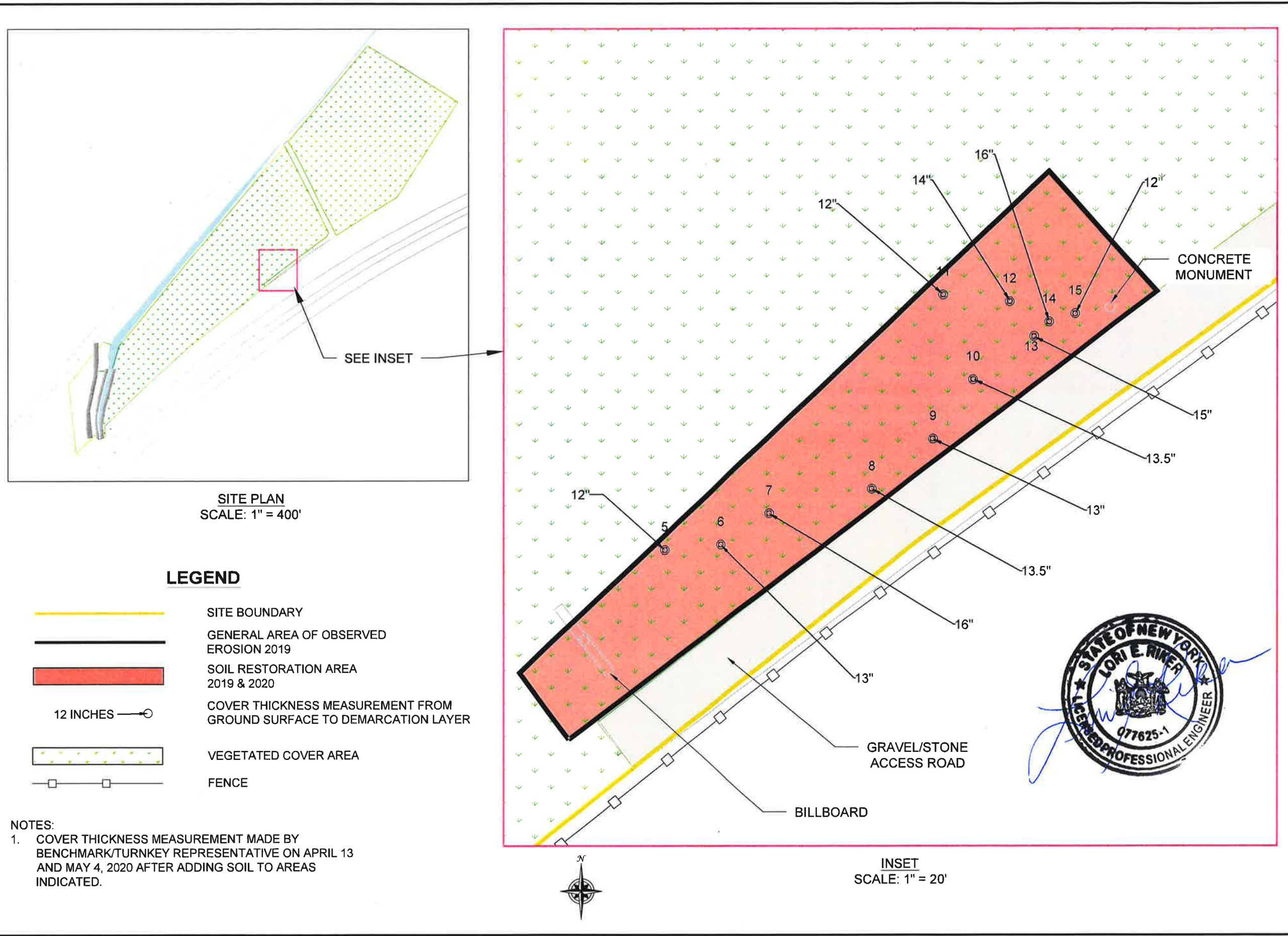


2558 HAMBURG TURNPIKE, SUITE 300, BUFFALO, NY 14218, (716) 856-0599

JOB NO.: 0362-018-001

**FIGURE 3**

**DISCLAIMER:** PROPERTY OF BENCHMARK ENVIRONMENTAL ENGINEERING & SCIENCE, PLLC. & TURNKEY ENVIRONMENTAL RESTORATION, LLC. IMPORTANT: THIS DRAWING PRINT IS LOANED FOR MUTUAL ASSISTANCE AND AS SUCH IS SUBJECT TO RECALL AT ANY TIME. INFORMATION CONTAINED HEREON IS NOT TO BE DISCLOSED OR REPRODUCED IN ANY FORM FOR THE BENEFIT OF PARTIES OTHER THAN NECESSARY SUBCONTRACTORS & SUPPLIERS WITHOUT THE WRITTEN CONSENT OF BENCHMARK ENVIRONMENTAL ENGINEERING & SCIENCE, PLLC & TURNKEY ENVIRONMENTAL RESTORATION, LLC.



## SITE COVER RESTORATION

CONSTRUCTION COMPLETION REPORT  
251 HOMER STREET REDEVELOPMENT SITE

OLEAN, NEW YORK  
PREPARED FOR

OLEAN SOLAR LAND LLC AND HOMERIDAE LLC

**BENCHMARK**  
ENVIRONMENTAL  
ENGINEERING &  
SCIENCE, PLLC

2556 HAMBURG TURNPIKE  
SUITE 300  
BUFFALO, NY 14218  
(716) 856-0599

JOB NO.: 0491-019-001

**FIGURE 4**

DISCLAIMER: PROPERTY OF BENCHMARK ENVIRONMENTAL ENGINEERING & SCIENCE, PLLC. IMPORTANT: THIS DRAWING PRINT IS LOANED FOR MUTUAL ASSISTANCE AND AS SUCH IS SUBJECT TO RECALL AT ANY TIME. INFORMATION CONTAINED HEREON IS NOT TO BE DISCLOSED OR REPRODUCED IN ANY FORM FOR THE BENEFIT OF PARTIES OTHER THAN NECESSARY SUBCONTRACTORS & SUPPLIERS WITHOUT THE WRITTEN CONSENT OF BENCHMARK ENVIRONMENTAL ENGINEERING & SCIENCE, PLLC.

# APPENDIX A

## PHOTOGRAPHIC LOG



## SITE PHOTOGRAPHS

Photo 1:



Photo 2:



Photo 3:



Photo 4:



### SOLAR FACILITY CONSTRUCTION

Photo 1: Access road and preparation for solar panel structures (9/13/2018)

Photo 2: Trench for electrical conduits (9/13/2018)

Photo 3: Layout of solar panel supports (10/12/2018)

Photo 4: Concrete interconnection equipment pad (10/12/2018)



## SITE PHOTOGRAPHS

Photo 5:



Photo 6:



Photo 7:



Photo 8:



### SOLAR FACILITY CONSTRUCTION

Photo 5: Layout of solar panel rows (10/12/2018)

Photo 6: Placement of solar panels on racking (10/24/2018)

Photo 7: Solar panel support forms (10/16/2018)

Photo 8: Poured concrete for solar panel supports (10/31/2018)



## SITE PHOTOGRAPHS

Photo 9:



Photo 10:



Photo 11:



Photo 12:



### SOLAR FACILITY CONSTRUCTION

Photo 9: Under road drainage pipe and absorbent socks along perimeter fencing (9/10/2018)

Photo 10: Access road and installed solar panels (12/6/2018)

Photo 11: Interconnection box and electrical conduit encased in concrete (12/6/2018)

Photo 12: Installed solar panels (12/6/2018)



## SITE PHOTOGRAPHS

Photo 13:



Photo 14:



Photo 15:



Photo 16:



### COVER SYSTEM REPAIRS (MAY 4, 2020)

Photo 13: Placing additional soil cover (looking southwest)

Photo 14: Placing additional soil cover (looking west)

Photo 15: Soil cover restored to 12-inch minimum (looking southwest)

Photo 16: Soil cover restored to 12-inch minimum (looking west)



## SITE PHOTOGRAPHS

Photo 17:



Photo 18:



Photo 19:



Photo 20:



### COVER SYSTEM REPAIRS (APRIL 13, 2021)

Photo 17: View of repaired cover system area (looking north)

Photo 18: View of repaired cover system area (looking west)

Photo 19: View of repaired cover system area (looking north)

Photo 20: View of repaired cover system area (looking east)



## SITE PHOTOGRAPHS

Photo 21:



Photo 22:



AERIAL VIEW OF REDEVELOPED SITE (LOOKING SOUTHWEST)

## APPENDIX B

### IMPORT DOCUMENTATION

# Giardini Bros. Construction

Allegany, New York 14706

Pit 373-7050

## SAND AND GRAVEL

Sold To Benson Construction 7-5-18  
Address Home St. - solar fields  
Driver \_\_\_\_\_

	ARTICLES	TOTAL	
21.370 Lbs.	S/B/R		
Lbs.			
Lbs.			
Lbs.			
Lbs.			
Lbs.			
	N.Y. State Sales Tax		

**WE WILL ASSUME NO RESPONSIBILITY WHEN DELIVERY IS MADE INSIDE OF CURB**

Received  
By

Received  
by

Ref. No: G 101209455

# Giardini Bros. Construction

Allegany, New York 14706

Pit 373-7050


## SAND AND GRAVEL

Sold To Benson Cart 7-5-18  
Address Solar-Fields-Homer St  
Driver \_\_\_\_\_

	ARTICLES	TOTAL
20.35 T <sup>lbs.</sup> n	S/B/R	
Lbs.		
Lbs.		
Lbs.		
Lbs.		
Lbs.		
	N.Y. State Sales Tax	

**WE WILL ASSUME NO RESPONSIBILITY WHEN DELIVERY IS MADE INSIDE OF CURB**

Received  
By

Received  
By 

# Giardini Bros. Construction

Allegany, New York 14706

Pit 373-7050

## SAND AND GRAVEL

7-5-18

Sold To

Address

Driver

	ARTICLES	TOTAL	
20.6 Ton Lbs.	S/B/R		
Lbs.			
Lbs.			
Lbs.			
Lbs.			
Lbs.			
	N.Y. State Sales Tax		

**WE WILL ASSUME NO RESPONSIBILITY WHEN DELIVERY IS MADE INSIDE OF CURB**

Received  
By                     

# Giardini Bros. Construction

Allegany, New York 14706

Pit 373-7050

# SAND AND GRAVEL

7-5-18

Sold To.

### Address

Driver

	ARTICLES	TOTAL
20.5 Lbs.	S/B/R	
Lbs.		
Lbs.		
Lbs.		
Lbs.		
Lbs.		
	N.Y. State Sales Tax	

**WE WILL ASSUME NO RESPONSIBILITY WHEN DELIVERY IS MADE INSIDE OF CURB**

Received  
By



# Giardini Bros. Construction

Allegany, New York 14706

Pit 373-7050

## SAND AND GRAVEL

Address

Driver

	ARTICLES	TOTAL
20.3 Tons Lbs.	J/B/R	
Lbs.		
Lbs.		
Lbs.		
Lbs.		
Lbs.		
	N.Y. State Sales Tax	

**WE WILL ASSUME NO RESPONSIBILITY WHEN DELIVERY IS MADE INSIDE OF CURB**

Received  
By

# Giardini Bros. Construction

Allegany, New York 14706

Pit 373-7050

## SAND AND GRAVEL

Address

Driver

	ARTICLES	TOTAL	
20.8 100 Lbs.	S/B/R		
Lbs.			
Lbs.			
Lbs.			
Lbs.			
Lbs.			
	N.Y. State Sales Tax		

**WE WILL ASSUME NO RESPONSIBILITY WHEN DELIVERY IS MADE INSIDE OF CURB**

Received  
By

# Giardini Bros. Construction

Allegany, New York 14706

Pit 373-7050

# SAND AND GRAVEL

Address

Driver

**WE WILL ASSUME NO RESPONSIBILITY WHEN DELIVERY IS MADE INSIDE OF CURB**

Received  
By

# Giardini Bros. Construction

Allegany, New York 14706

Pit 373-7050

# SAND AND GRAVEL

Sold To

Address

Driver

**WE WILL ASSUME NO RESPONSIBILITY WHEN DELIVERY IS MADE INSIDE OF CURB**

Received  
By

# Giardini Bros. Construction

Allegany, New York 14706

Pit 373-7050

## SAND AND GRAVEL

Sold To

Address

Driver

	ARTICLES	TOTAL
20.25 Lbs.	S   B   R	
Lbs.		
Lbs.		
Lbs.		
Lbs.		
Lbs.		
	N.Y. State Sales Tax	

**WE WILL ASSUME NO RESPONSIBILITY WHEN DELIVERY IS MADE INSIDE OF CURB**

Received  
By *[Signature]*

Ref. No. G 101269455

# Giardini Bros. Construction

Allegany, New York 14706

Pit 373-7050

## SAND AND GRAVEL

Sold To

Address

Driver

	ARTICLES	TOTAL
19.5 TON Lbs.	S/B/R	
Lbs.		
Lbs.		
Lbs.		
Lbs.		
Lbs.		
	N.Y. State Sales Tax	

**WE WILL ASSUME NO RESPONSIBILITY WHEN DELIVERY IS MADE INSIDE OF CURB**

Received  
By

DOI: 10.1002/for

# Giardini Bros. Construction

4198 Route 417  
Allegany, New York 14706

Phone 372-2928  
Pit 373-7050

**SAND AND GRAVEL** 7-9-18

Sold To Johnson (Construction)  
Address Home St. (Roach) 251 Solar  
Driver Back (Const Blue)

	ARTICLES	TOTAL
20.95 Ton Lbs.	S/B/R	
21.3 Ton Lbs.	S/B/R	
20.65 Ton Lbs.	S/B/R	
20.35 Ton Lbs.	S/B/R	
20.25 Ton Lbs.	S/B/R	
21.1 Ton Lbs.	S/B/R	
	N.Y. State Sales Tax	

**WE WILL ASSUME NO RESPONSIBILITY WHEN DELIVERY IS MADE INSIDE OF CURB**

Received  
By \_\_\_\_\_

124.6 Ton

Ref. No: G 101209455

# Giardini Bros. Construction

4198 Route 417  
Allegany, New York 14706

Phone 372-2928  
Pit 373-7050

**SAND AND GRAVEL** 79-18

Sold To Benson Construction  
Address Homer St. (Road) 251 Sdc2  
Driver Benson Fred

	ARTICLES	TOTAL
22.4 TON Lbs.	5/B/R	
22.1 TON Lbs.	5/B/R	
21.95 TON Lbs.	5/B/R	
20.90 TON Lbs.	5/B/R	
Lbs.		
Lbs.		
	N.Y. State Sales Tax	

**WE WILL ASSUME NO RESPONSIBILITY WHEN DELIVERY IS MADE INSIDE OF CURB**

Received  
By

87.35 Ton

DOI: 10.1002/anie

## DELIVERY RECEIPT

## Giardini Bros. Construction

4198 Route 417  
Allegany, New York 14706

Phone 372-2928  
Pit 373-7050

## SAND AND GRAVEL 7-9-18

Sold To Benson Construction  
Address Hammer St. Road 251 Solar  
Driver Benson (Red)

	ARTICLES	TOTAL
20.87 Ton Lbs.	S/B/R	
21.15 Ton Lbs.	S/B/R	
22.6 Ton Lbs.	S/B/R	
22.75 Ton Lbs.	S/B/R	
22.45 Ton Lbs.	S/B/R	
22.35 Ton Lbs.	S/B/R	
22.6 Ton	S/B/R	
22.3 Ton	S/B/R	
22.45 Ton	S/B/R	
22.3 Ton	S/B/R	
21.75 Ton	S/B/R	
N.Y. State Sales Tax		

WE WILL ASSUME NO RESPONSIBILITY WHEN DELIVERY IS MADE INSIDE OF CURB

Received  
By

243.5 Ton

Ref. No. G-101209455

## DELIVERY RECEIPT

## Giardini Bros. Construction

4198 Route 417  
Allegany, New York 14706

Phone 372-2928  
Pit 373-7050

## SAND AND GRAVEL 7-10-18

Sold To Benson Construction  
Address Hammer St. Road 251 Solar  
Driver Peck (Blue)

	ARTICLES	TOTAL
20.95 Ton Lbs.	S/B/R	
20.5 Ton Lbs.	S/B/R	
20.45 Ton Lbs.	S/B/R	
20.8 Ton Lbs.	S/B/R	
20.75 Ton Lbs.	S/B/R	
21.0 Ton Lbs.	S/B/R	
20.1 Ton	S/B/R	
20.65 Ton	S/B/R	
21.6 Ton	S/B/R	
21.4 Ton	S/B/R	
N.Y. State Sales Tax		

WE WILL ASSUME NO RESPONSIBILITY WHEN DELIVERY IS MADE INSIDE OF CURB

Received  
By

208.4 Tyler Barker

Ref. No. G-101209455

## DELIVERY RECEIPT

**Giardini Bros. Construction**4198 Route 417  
Allegany, New York 14706Phone 372-2928  
Pit 373-7050**SAND AND GRAVEL**

Sold To Benson Construction 7-10-18  
 Address Homer St. Road 251 Solar  
 Driver Peck (Blue)

	ARTICLES	TOTAL
21.4 Tons Lbs.	S/B/R	
20.7 Tons Lbs.	S/B/R	
21.55 Tons Lbs.	S/B/R	
21.05 Tons Lbs.	S/B/R	
21.05 Tons Lbs.	S/B/R	
Lbs.		
	N.Y. State Sales Tax	

WE WILL ASSUME NO RESPONSIBILITY WHEN DELIVERY IS MADE INSIDE OF CURB

Received By Tyler Barker  
 105.75 Tons

## DELIVERY RECEIPT

**Giardini Bros. Construction**4198 Route 417  
Allegany, New York 14706Phone 372-2928  
Pit 373-7050**SAND AND GRAVEL**

Sold To Benson Construction 7-10-18  
 Address Homer St. Road 251 Solar  
 Driver Benson (Red)

	ARTICLES	TOTAL
22.1 Tons Lbs.	S/B/R	
21.7 Tons Lbs.	S/B/R	
22.50 Tons Lbs.	S/B/R	
22.55 Tons Lbs.	S/B/R	
22.55 Tons Lbs.	S/B/R	
22.25 Tons Lbs.	S/B/R	
21.95 Tons	S/B/R	
22.2 Tons	S/B/R	
22.15 Tons	S/B/R	
21.4 Tons	S/B/R	
	N.Y. State Sales Tax	

WE WILL ASSUME NO RESPONSIBILITY WHEN DELIVERY IS MADE INSIDE OF CURB

Received By  
 221.35 Tons

Phone 372-2928  
Pit 373-7050

## SAND AND GRAVEL

7-10-18  
Sold To Benson Construction  
Address Homer St. Road 251 Solar  
Driver Benson (Red)

	ARTICLES	TOTAL
21.4 TUN Lbs.	S/B/R	
32.2 TUN Lbs.	S/B/R	
21.65 TUN Lbs.	S/B/R	27
22.15 TUN Lbs.	S/B/R	
21.2 TUN Lbs.	S/B/R	
20.8 TUN Lbs.	S/B/R	
	N.Y. State Sales Tax	

**WE WILL ASSUME NO RESPONSIBILITY WHEN DELIVERY IS MADE INSIDE OF CURB**

Received  
By

129.4 TON

Phone 372-2928  
Pit 373-7050

## SAND AND GRAVEL

Sold To Benson Construction 7-11-18  
Address Homer St. Rd - 251 Solar2  
Driver Benson (Red)

	ARTICLES	TOTAL
22.75 Tm Lbs.	S   B   R	
22.85 Tm Lbs.	S   B   R	
22.9 Tm Lbs.	S   B   R	
22.7 Tm Lbs.	S   B   R	
22.9 Tm Lbs.	S   B   R	
22.25 Tm Lbs.	S   B   R	
21.5 Tm	S   B   R	
22.2 Tm	S   B   R	
22.05 Tm	S   B   R	
23.2 Tm	S   B   R	
	N.Y. State Sales Tax	

**WE WILL ASSUME NO RESPONSIBILITY WHEN DELIVERY IS MADE INSIDE OF CURB**

Received  
By

225.3 Ton

Phone 372-2928  
Pit 373-7050

# SAND AND GRAVEL

7-11-13

Sold To Benson Construction  
Address Homer St. Road - 251 Solar  
Driver Benson (Red)

	ARTICLES	TOTAL
21.85 Tm Lbs.	S/B/R	
32.55 Tm Lbs.	S/B/R	
22.7 Tm Lbs.	S/B/R	
32.75 Tm Lbs.	S/B/R	
350 Tm Lbs.	S/B/R	
21.25 Tm Lbs.	S/B/R	
	N.Y. State Sales Tax	

**WE WILL ASSUME NO RESPONSIBILITY WHEN DELIVERY IS MADE INSIDE OF CURB**

**Received  
By**

134.6 Ton

Ref. No: G 101209455

Phone 372-2928  
Pit 373-7050

## SAND AND GRAVEL

7-11-18

Sold To Benson Construction 7-11-18  
Address Homer St Road - 251 Solar  
Driver PECK (Blue)

	ARTICLES	TOTAL
21.35 T Lbs.	S/B/R	
20.65 T Lbs.	S/B/R	
20.75 T Lbs.	S/B/R	
21.0 T Lbs.	S/B/R	
19.95 T Lbs.	S/B/R	
21.15 T Lbs.	S/B/R	
21.7 T Lbs.	S/B/R	
21.5 T Lbs.	S/B/R	
21.5 T Lbs.	S/B/R	
	N.Y. State Sales Tax	

**WE WILL ASSUME NO RESPONSIBILITY WHEN DELIVERY IS MADE INSIDE OF CURB**

Received  
By

189.35 Ton

ed  
Tyler Barker



# Giardini Bros. Construction

Phone 372-2928  
Pit 373-7050

## SAND AND GRAVEL

Sold To Benson Construction 7-11-18  
Address Harmer St. Road - 251 Solare  
Driver Peck (Blue)

**WE WILL ASSUME NO RESPONSIBILITY WHEN DELIVERY IS MADE INSIDE OF CURB**

145.4 Ton	Received By Tyler Barker
-----------	--------------------------------

# Giardini Bros. Construction

Phone 372-2928  
Pit 373-7050

## SAND AND GRAVEL

Sold To Benson Construction 7-1-18  
Address Homer Rd 251 / solar  
Driver White Truck

**WE WILL ASSUME NO RESPONSIBILITY WHEN DELIVERY IS MADE INSIDE OF CURB**

Received By 

## DELIVERY RECEIPT

**Giardini Bros. Construction**4198 Route 417  
Allegany, New York 14706Phone 372-2928  
Pit 373-7050**SAND AND GRAVEL**

7-12-18

Sold To Benson Construction  
Address D/130asin  
Driver Red- Benson

	ARTICLES	TOTAL
22.85 Ton Lbs.	S/B/R	
23.3 Ton Lbs.	S/B/R	
21.25 Ton Lbs.	S/B/R	
22.7 Ton Lbs.	S/B/R	
22.75 Ton Lbs.	S/B/R	
22.9 Ton Lbs.	S/B/R	
	N.Y. State Sales Tax	

WE WILL ASSUME NO RESPONSIBILITY WHEN DELIVERY IS MADE INSIDE OF CURB

Received  
By

135.75 Ton

## DELIVERY RECEIPT

**Giardini Bros. Construction**4198 Route 417  
Allegany, New York 14706Phone 372-2928  
Pit 373-7050**SAND AND GRAVEL**

7-12-18

Sold To Benson Construction  
Address Hammer St. Road 251 / solar  
Driver Benson- Red

	ARTICLES	TOTAL
22.05 Ton Lbs.	S/B/R	
22.8 Ton Lbs.	S/B/R	
22.0 Ton Lbs.	S/B/R	
23.2 Ton Lbs.	S/B/R	
23.2 Ton Lbs.	S/B/R	
	N.Y. State Sales Tax	

WE WILL ASSUME NO RESPONSIBILITY WHEN DELIVERY IS MADE INSIDE OF CURB

Received  
By

113.25 Ton

# Giardini Bros. Construction

Phone 373-7050  
email: sales@gbcbrothers.com

## SAND AND GRAVEL

Driver Empty 9400

**WE WILL ASSUME NO RESPONSIBILITY WHEN DELIVERY IS MADE INSIDE OF CURB**

10.45 Ton

Received  
By

Ref. No: G 101209459

# Giardini Bros. Construction

Phone 373-7050  
email: [sales@gbcbrothers.com](mailto:sales@gbcbrothers.com)

## SAND AND GRAVEL

Driver

WE WILL ASSUME NO RESPONSIBILITY WHEN DELIVERY IS MADE INSIDE OF CURB

59.55 Tol

Received  
By

Ref. No: G-101209455

Bot No: G 101208455

Ref. No: G 101209455

## DELIVERY RECEIPT

# Giardini Bros. Construction

PO Box 35  
Allegany, New York

Phone 373-7050  
email: [sales@gbcbrothers.com](mailto:sales@gbcbrothers.com)

## SAND AND GRAVEL

9-27-18

Sold To

Address

Driver

	ARTICLES	TOTAL
6.9 Tons Lbs.	S/B/R	
6.75 Tons Lbs.	S/B/R	
6.55 Tons Lbs.	S/B/R	
Lbs.		
Lbs.		
Lbs.		
	N.Y. State Sales Tax	

**WE WILL ASSUME NO RESPONSIBILITY WHEN DELIVERY IS MADE INSIDE OF CURB**

20.2 Ton

Received  
By

Ref. No: G 101203455

## DELIVERY RECEIPT

# Giardini Bros. Construction

PO Box 35  
Allegany, New York

Phone 373-7050  
email: [sales@gbcbrothers.com](mailto:sales@gbcbrothers.com)

## SAND AND GRAVEL

9-28-12

Sold To

Address

Driver

	ARTICLES	TOTAL
21. 15 TON Lbs.	S   B   R	
21. 45 TON Lbs.	S   B   R	
21. 65 TON Lbs.	S   B   R	
21. 7 TON Lbs.	S   B   R	
Lbs.		
Lbs.		
	N.Y. State Sales Tax	

~~WE WILL ASSUME NO RESPONSIBILITY WHEN DELIVERY IS MADE INSIDE OF CURB~~

81.15 TOR

Received  
By

Ref. No: G 101209453

## DELIVERY RECEIPT

**Giardini Bros. Construction**PO Box 35  
Allegany, New YorkPhone 373-7050  
email: sales@gbcbrothers.com**SAND AND GRAVEL**Sold To Benson Construction 10-10-18

Address \_\_\_\_\_

Driver \_\_\_\_\_

221 HOMER ST, Solarfields

	ARTICLES	TOTAL
7.0 Ton Lbs.	S/B/R	
6.7 Ton Lbs.	S/B/R	
6.45 Ton Lbs.	S/B/R	
6.5 Ton Lbs.	S/B/R	
6.40 Ton Lbs.	S/B/R	
7.95 Ton Lbs.	S/B/R	
	N.Y. State Sales Tax	

WE WILL ASSUME NO RESPONSIBILITY WHEN DELIVERY IS MADE INSIDE OF CURB

Received  
ByD CORNELL

Ref. No: G 101209455

## DELIVERY RECEIPT

**Giardini Bros. Construction**PO Box 35  
Allegany, New YorkPhone 373-7050  
email: sales@gbcbrothers.com**SAND AND GRAVEL**

Sold To Benson Construction 10-4-18  
 Address Solar Fields  
 Driver \_\_\_\_\_

	ARTICLES	TOTAL	
6.3 Ton Lbs.	CW #2's		
Lbs.			
Lbs.			
Lbs.			
Lbs.			
Lbs.			
	N.Y. State Sales Tax		

WE WILL ASSUME NO RESPONSIBILITY WHEN DELIVERY IS MADE INSIDE OF CURB

Received  
By \_\_\_\_\_

Ref. No: G 101209455

## DELIVERY RECEIPT

**Giardini Bros. Construction**PO Box 35  
Allegany, New YorkPhone 373-7050  
email: sales@gbcbrothers.com**SAND AND GRAVEL**

Sold To Benson Construction 10-10-18  
 Address \_\_\_\_\_  
 Driver \_\_\_\_\_

221 HOMER ST. Solarfields

	ARTICLES	TOTAL	
7.0 Ton Lbs.	S/B/R		
6.7 Ton Lbs.	S/B/R		
6.45 Ton Lbs.	S/B/R		
6.5 Ton Lbs.	S/B/R		
6.40 Ton Lbs.	S/B/R		
7.95 Ton Lbs.	S/B/R		
	N.Y. State Sales Tax		

WE WILL ASSUME NO RESPONSIBILITY WHEN DELIVERY IS MADE INSIDE OF CURB

41 Ton Received  
By D CORNELL

Ref. No: G 101209455

## DELIVERY RECEIPT

**Giardini Bros. Construction**PO Box 35  
Allegany, New YorkPhone 373-7050  
email: sales@gbcbrothers.com**SAND AND GRAVEL**

Sold To Benson Construction 10-15-18  
Address \_\_\_\_\_  
Driver Solar

	ARTICLES	TOTAL	
4.05 Tm Cwt 1's			
Lbs.		2	
Lbs.			
Lbs.			
Lbs.			
Lbs.			
Lbs.			
	N.Y. State Sales Tax		

WE WILL ASSUME NO RESPONSIBILITY WHEN DELIVERY IS MADE INSIDE OF CURB

Received  
By: D. Cornell

Ref. No: G 101209455



221 HOMER ST.

DELIVERY RECEIPT

**Giardini Bros. Construction**

PO Box 35  
Allegany, New York

Phone 373-7050  
email: sales@gbcbrothers.com

**SAND AND GRAVEL**

6-10-19

Sold To Benson Construction  
Address 221 Homer Street  
Driver \_\_\_\_\_

	ARTICLES	TOTAL
21.4 Tm Lbs.	S/B/R	
22.0 Tm Lbs.	S/B/R	
21.1 Tm Lbs.	S/B/R	
21.4 Tm Lbs.	S/B/R	
21.45 Tm Lbs.	S/B/R	
20.4 Tm Lbs.	S/B/R	
20.45 Tm	S/B/R	
	N.Y. State Sales Tax	

WE WILL ASSUME NO RESPONSIBILITY WHEN DELIVERY IS MADE INSIDE OF CURB

Received  
By 

Ref No. G 101209453

DELIVERY RECEIPT

**Giardini Bros. Construction**

PO Box 35  
Allegany, New York

Phone 373-7050  
email: sales@gbcbrothers.com

**SAND AND GRAVEL**

6-25-19

Sold To Benson Construction  
Address \_\_\_\_\_  
Driver \_\_\_\_\_

	ARTICLES	TOTAL
20.25 ton Lbs.	S-B-R	
Lbs.		
Lbs.		
Lbs.		
Lbs.		
Lbs.		
Lbs.		
	N.Y. State Sales Tax	

WE WILL ASSUME NO RESPONSIBILITY WHEN DELIVERY IS MADE INSIDE OF CURB

Received  
By 

Ref. No. G 101209453

## DELIVERY RECEIPT

**Giardini Bros. Construction**PO Box 35  
Allegany, New YorkPhone 373-7050  
email: sales@gbcbrothers.com**SAND AND GRAVEL**Sold To Benson Construction 6-26-19  
Address \_\_\_\_\_  
Driver \_\_\_\_\_

		ARTICLES	TOTAL	
18.3	Lbs.	S-B-R		
21.55	Lbs.	S-B-R		
20.6	Lbs.	S-B-R		
	Lbs.			
	Lbs.			
	Lbs.			
	Lbs.			
		N.Y. State Sales Tax		

WE WILL ASSUME NO RESPONSIBILITY WHEN DELIVERY IS MADE INSIDE OF CURB

60.45 Ton

Received By

Dennis A. Grackler

Ref No: G 101209455

## DELIVERY RECEIPT

**Giardini Bros. Construction**PO Box 35  
Allegany, New YorkPhone 373-7050  
email: sales@gbcbrothers.com**SAND AND GRAVEL**Sold To Benson Construction 7-1-19  
Address \_\_\_\_\_  
Driver \_\_\_\_\_

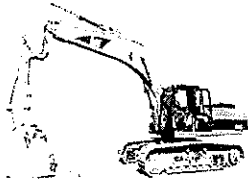
		ARTICLES	TOTAL	
18.85	Lbs.	S-B-R		
	Lbs.			
	Lbs.			
	Lbs.			
	Lbs.			
	Lbs.			
		N.Y. State Sales Tax		

WE WILL ASSUME NO RESPONSIBILITY WHEN DELIVERY IS MADE INSIDE OF CURB

Received By

Dennis A. Grackler

Ref No: G 101209455



# RICHARD L. PECK CONSTRUCTION, INC.

63 South 7th St., Allegany, NY 14706

Office (716) 373-2006

Fax (716) 372-3766

Mastercard, Visa, American Express and Discover Cards Accepted

**This is your Statement, no other bill will be sent.**

**PAYMENT IS DUE UPON RECEIPT. A 2% finance charge will be added after 30 days.**

**If filing exempt, please forward exemption certificate with payment.**

September 16, 2019

Benson Construction  
423 West Riverside Dr.  
Olean, NY 14760

---

09/09/19	Inv. #6933	Tri-Axle	8 hrs.	\$680.00
		Fill Dirt	135 yds.	\$675.00
09/09/19	Inv. #7509	Tri-Axle	5 hrs.	\$425.00
		Fill Dirt	81 yds.	\$405.00
09/10/19	Inv. #6934	Tri-Axle	8.5 hrs.	\$722.50
		Fill Dirt	148.5 yds.	\$742.50
09/11/19	Inv. #6935	Tri-Axle	8 hrs.	\$680.00
		Fill Dirt	162 yds.	<u>\$810.00</u>
				\$5,140.00
				<u>\$411.20</u> tax
				<b>\$5,551.20 TOTAL</b>

# Richard Peck Construction Inc.

## Driver's Load Count and Job Time Sheet

2010

Business Name:

Benson Construction

Driver's Name:

J. H. H.

Truck:

R-1

Date:

7/4/14

	Cr. Bankrun	Cr. #2	Cr. #3	PA2A	Pea Gr./ Sand Mix	Bank Run	Sc. Bank Run	#3	Over size
1									
2									
3									
4									
5									
6									
7									
8									
9									
10									

FILL DIRT

Total Loads:

Total Cubic Yards:

18.5

# Richard Peck Construction Inc.

## Driver's Load Count and Job Time Sheet

2010

Business Name:

Benson Construction

Driver's Name:

J. H. H.

Truck:

R-1

Date:

7/4/14

	Cr. Bankrun	Cr. #2	Cr. #3	PA2A	Pea Gr./ Sand Mix	Bank Run	Sc. Bank Run	#3	Over size
1									
2									
3									
4									
5									
6									
7									
8									
9									
10									

FILL DIRT

Total Loads:

Total Cubic Yards:

18.5

# Richard Peck Construction Inc.

## Driver's Load Count and Job Time Sheet

2017

Business Name: Benson Construction

Driver's Name: Timmy Truck: R-1 Date: 9/7/17

	Cr. Bankrun	Cr. #2	Cr. #3	PA2A	Pea Gr./ Sand Mix	Bank Run	Sc. Bank Run	#3	Over size
1									
2									
3									
4									
5									
6									
7									
8									
9									
10									

FILL DIRT

Total Loads: 1

Total Cubic Yards: 13.5

*BRP*

# Richard Peck Construction Inc.

## Driver's Load Count and Job Time Sheet

2017

Business Name: Benson Construction

Driver's Name: Timmy Truck: R-1 Date: 9/7/17

	Cr. Bankrun	Cr. #2	Cr. #3	PA2A	Pea Gr./ Sand Mix	Bank Run	Sc. Bank Run	#3	Over size
1									
2									
3									
4									
5									
6									
7									
8									
9									
10									

FILL DIRT

Total Loads: 1

Total Cubic Yards: 13.5

*BRP*



# Richard Peck Construction Inc.

Driver's Load Count and Job Time Sheet

2017

Business Name: Richard Peck Construction Inc.

Driver's Name: Michael Truck: R4 Date: 4/5/17

	Cr. Bankrun	Cr. #2	Cr. #3	PA2A	Pea Gr./ Sand Mix	Bank Run	Sc. Bank Run	#3	Over size
1									
2									
3									
4									
5									
6									
7									
8									
9									
10									

FILL DIRT

Total Loads: 1

Total Cubic Yards: 13.5

# Richard Peck Construction Inc.

Driver's Load Count and Job Time Sheet

2017

Business Name: Richard Peck Construction Inc.

Driver's Name: Michael Truck: R4 Date: 4/5/17

	Cr. Bankrun	Cr. #2	Cr. #3	PA2A	Pea Gr./ Sand Mix	Bank Run	Sc. Bank Run	#3	Over size
1									
2									
3									
4									
5									
6									
7									
8									
9									
10									

FILL DIRT

Total Loads: 1

Total Cubic Yards: 13.5

# Richard Peck Construction Inc.

## Driver's Load Count and Job Time Sheet

2015

Business Name: Benson

Driver's Name: J. H. Harris Truck: 114 Date: 9/5/15

	Cr. Bankrun	Cr. #2	Cr. #3	PA2A	Pea Gr./ Sand Mix	Bank Run	Sc. Bank Run	#3	Over size
1									
2									
3									
4									
5									
6									
7									
8									
9									
10									

Total Loads: 1

Total Cubic Yards: 13.5

# Richard Peck Construction Inc.

## Driver's Load Count and Job Time Sheet

2015

Business Name: Benson

Driver's Name: J. H. Harris Truck: 114 Date: 9/5/15

	Cr. Bankrun	Cr. #2	Cr. #3	PA2A	Pea Gr./ Sand Mix	Bank Run	Sc. Bank Run	#3	Over size
1									
2									
3									
4									
5									
6									
7									
8									
9									
10									

Total Loads: 1

Total Cubic Yards: 13.5

# Richard Peck Construction Inc.

Driver's Load Count and Job Time Sheet

2015

Business Name: Bau-Sch

Driver's Name: T. H. M. J. Truck: 11-9 Date: 1/2/19

	Cr. Bankrun	Cr. #2	Cr. #3	PA2A	Pea Gr./ Sand Mix	Bank Run	Sc. Bank Run	#3	Over size
1									
2									
3									
4									
5									
6									
7									
8									
9									
10									

Total Loads: 1

Total Cubic Yards: 13.5

# Richard Peck Construction Inc.

Driver's Load Count and Job Time Sheet

2015

Business Name: Bau-Sch

Driver's Name: T. H. M. J. Truck: 11-9 Date: 1/2/19

	Cr. Bankrun	Cr. #2	Cr. #3	PA2A	Pea Gr./ Sand Mix	Bank Run	Sc. Bank Run	#3	Over size
1									
2									
3									
4									
5									
6									
7									
8									
9									
10									

Total Loads: 1

Total Cubic Yards: 13.5

# Richard Peck Construction Inc.

Driver's Load Count and Job Time Sheet

2010

Business Name: Ben Sen Construction

Driver's Name: T. H. Smith Truck: R 4 Date: 7/5/14

	Cr. Bankrun	Cr. #2	Cr. #3	PA2A	Pea Gr./ Sand Mix	Bank Run	Sc. Bank Run	#3	Over size
1									
2									
3									
4									
5									
6									
7									
8									
9									
10									

Full Drum

Total Loads: 1

Total Cubic Yards: 13.5

*[Signature]*

# Richard Peck Construction Inc.

Driver's Load Count and Job Time Sheet

2010

Business Name: Ben Sen

Driver's Name: T. H. Smith Truck: R 4 Date: 7/5/14

	Cr. Bankrun	Cr. #2	Cr. #3	PA2A	Pea Gr./ Sand Mix	Bank Run	Sc. Bank Run	#3	Over size
1									
2									
3									
4									
5									
6									
7									
8									
9									
10									

Full Drum

Total Loads: 1

Total Cubic Yards: 13.5

*[Signature]*

# Richard Peck Construction Inc.

## Driver's Load Count and Job Time Sheet

2010

Business Name:

Benson Construction

Driver's Name:

11/15/10

Truck:

11/15/10

Date:

11/15/10

	Cr. Bankrun	Cr. #2	Cr. #3	PA2A	Pea Gr./ Sand Mix	Bank Run	Sc. Bank Run	#3	Over size
1									
2									
3									
4									
5									
6									
7									
8									
9									
10									

FILL DIRT

Total Loads:

1

Total Cubic Yards:

13.5

*[Signature]*

# Richard Peck Construction Inc.

## Driver's Load Count and Job Time Sheet

2010

Business Name:

Benson Construction

Driver's Name:

11/15/10

Truck:

11/15/10

Date:

11/15/10

	Cr. Bankrun	Cr. #2	Cr. #3	PA2A	Pea Gr./ Sand Mix	Bank Run	Sc. Bank Run	#3	Over size
1									
2									
3									
4									
5									
6									
7									
8									
9									
10									

FILL DIRT

Total Loads:

1

Total Cubic Yards:

13.5

*[Signature]*



# Richard Peck Construction Inc.

## Driver's Load Count and Job Time Sheet

2010

Business Name: Benson Construction

Driver's Name: Wendy Truck: R-4 Date: 7/5/10

	Cr. Bankrun	Cr. #2	Cr. #3	PA2A	Pea Gr./ Sand Mix	Bank Run	Sc. Bank Run	#3	Over size
1									
2									
3									
4									
5									
6									
7									
8									
9									
10									

FULL DUMP

Total Loads: 1

Total Cubic Yards: 13.5

*[Signature]*

# Richard Peck Construction Inc.

## Driver's Load Count and Job Time Sheet

2010

Business Name: Benson Construction

Driver's Name: Wendy Truck: R-4 Date: 7/5/10

	Cr. Bankrun	Cr. #2	Cr. #3	PA2A	Pea Gr./ Sand Mix	Bank Run	Sc. Bank Run	#3	Over size
1									
2									
3									
4									
5									
6									
7									
8									
9									
10									

FULL DUMP

Total Loads: 1

Total Cubic Yards: 13.5

*[Signature]*

# Richard Peck Construction Inc.

## Driver's Load Count and Job Time Sheet

2012

Business Name: Benson Construction

Driver's Name: T. Morris Truck: R-4 Date: 9/5/14

	Cr. Bankrun	Cr. #2	Cr. #3	PA2A	Pea Gr./ Sand Mix	Bank Run	Sc. Bank Run	#3	Over size
1									
2									
3									
4									
5									
6									
7									
8									
9									
10									

FILL DIRT

Total Loads: 1

Total Cubic Yards: 13.5

# Richard Peck Construction Inc.

## Driver's Load Count and Job Time Sheet

2012

Business Name: Benson Construction

Driver's Name: T. Morris Truck: R-4 Date: 9/5/14

	Cr. Bankrun	Cr. #2	Cr. #3	PA2A	Pea Gr./ Sand Mix	Bank Run	Sc. Bank Run	#3	Over size
1									
2									
3									
4									
5									
6									
7									
8									
9									
10									

FILL DIRT

Total Loads: 1

Total Cubic Yards: 13.5

# Richard L. Peck Construction, Inc.

7511

63 SOUTH 7th STREET • ALLEGANY, NEW YORK 14706 • 716 - 373 - 2006 • Fax 716 - 372 - 3766

TO

BANKSON CONT.

DATE

9/6/19

P.O. NUMBER

TERMS

Ton

DESCRIPTION

PRICE

TR1 AXLE 5 HZ

6 LEADS FILL

81 YRS

# Richard Peck Construction Inc.

Driver's Load Count and Job Time Sheet

2012

Business Name: Benson Construction

Driver's Name: T. Woods Truck: R-4 Date: 9/6/17

	Cr. Bankrun	Cr. #2	Cr. #3	PA2A	Pea Gr./ Sand Mix	Bank Run	Sc. Bank Run	#3	Over size
1									
2									
3									
4									
5									
6									
7									
8									
9									
10									

FILL DIRT

Total Loads: 1

Total Cubic Yards: 13.5

# Richard Peck Construction Inc.

Driver's Load Count and Job Time Sheet

2012

Business Name: Benson Construction

Driver's Name: T. Woods Truck: R-4 Date: 9/6/17

	Cr. Bankrun	Cr. #2	Cr. #3	PA2A	Pea Gr./ Sand Mix	Bank Run	Sc. Bank Run	#3	Over size
1									
2									
3									
4									
5									
6									
7									
8									
9									
10									

FILL DIRT

Total Loads: 1

Total Cubic Yards: 13.5

# Richard Peck Construction Inc.

## Driver's Load Count and Job Time Sheet

2015

Business Name: Benson Construction

Driver's Name: Thomas Truck: 104 Date: 7/6/15

	Cr. Bankrun	Cr. #2	Cr. #3	PA2A	Pea Gr./ Sand Mix	Bank Run	Sc. Bank Run	#3	Over size
1									
2									
3									
4									
5									
6									
7									
8									
9									
10									

FILL DIRT

Total Loads: 1

Total Cubic Yards: 13.5

# Richard Peck Construction Inc.

## Driver's Load Count and Job Time Sheet

2015

Business Name: Benson Construction

Driver's Name: Thomas Truck: 104 Date: 7/6/15

	Cr. Bankrun	Cr. #2	Cr. #3	PA2A	Pea Gr./ Sand Mix	Bank Run	Sc. Bank Run	#3	Over size
1									
2									
3									
4									
5									
6									
7									
8									
9									
10									

FILL DIRT

Total Loads: 1

Total Cubic Yards: 13.5

# Richard Peck Construction Inc.

## Driver's Load Count and Job Time Sheet

2020

Business Name: Benson Construction

Driver's Name: Wendy Truck: R-4 Date: 9/6/19

	Cr. Bankrun	Cr. #2	Cr. #3	PA2A	Pea Gr./ Sand Mix	Bank Run	Sc. Bank Run	#3	Over size
1									
2									
3									
4									
5									
6									
7									
8									
9									
10									

FILL DIRT

Total Loads: 1

Total Cubic Yards: 13.5

# Richard Peck Construction Inc.

## Driver's Load Count and Job Time Sheet

2019

Business Name: Benson Construction

Driver's Name: Wendy Truck: R-4 Date: 9/6/19

	Cr. Bankrun	Cr. #2	Cr. #3	PA2A	Pea Gr./ Sand Mix	Bank Run	Sc. Bank Run	#3	Over size
1									
2									
3									
4									
5									
6									
7									
8									
9									
10									

FILL DIRT

Total Loads: 1

Total Cubic Yards: 13.5

DELIVERY RECEIPT

# Giardini Bros. Construction

PO Box 35  
Allegany, New York

Phone 373-7050  
email: sales@gbcbrothers.com

## SAND AND GRAVEL

Sold To Benson Construction 4-30-20  
Address \_\_\_\_\_  
Driver \_\_\_\_\_

	ARTICLES	TOTAL
22.6 Ton	PA/2A	
22.55 Ton	↓	
23.50 Ton		
23.2 Ton		
21.15 Ton		
21.55 Ton		
Dylan	N.Y. State Sales Tax	

WE WILL ASSUME NO RESPONSIBILITY WHEN DELIVERY IS MADE INSIDE OF CURB

Received  
By

Rev. 10/12/09/055



# INVOICE



GIARDINI BROS CONSTRUCTION CO INC  
P.O. Box 35  
Allegany, NY 14706  
sales@gcbrothers.com

DATE INVOICE #  
7/9/2020 7436

Phone/Fax: 716-373-7050

**BILL TO:**

Benchmark Environmental  
2558 Hamburg Turnpike  
Buffalo, New York 14218

**SHIP TO:**

P.O. NUMBER

TERMS

REP

SHIP

VIA

F.O.B.

PROJECT

8/3/2020

QUANTITY

ITEM CODE

DESCRIPTION

PRICE EACH

AMOUNT

18.05

BR

Bankrun Gravel 7/8/20

7.00

126.35T

Job # B0362-018-001

1

Delivery

Trucking- Base Delivery 7/8/20

125.00

125.00T

Job # B0362-018-001

NYS Sales Tax

8.00%

20.11

\$271.46

**TOTAL**

# DELIVERY RECEIPT

## Giardini Bros. Construction

PO Box 35  
Allegany, New York

Phone 373-7050  
email: sales@gbcbrothers.com

### SAND AND GRAVEL

7-8-20

Sold To Benchmark Environmental  
Address Homer Street | Solar  
Driver JT Williams  
716-200-3196 - Mark Panus

		ARTICLES	TOTAL	
18.05	Ton	BANK RUN		
	Ton			
	Ton			
	Ton			
	Ton			
	Ton			
		w/ delivery		
Job#	B0362-018-001			
		N.Y. State Sales Tax		

WE WILL ASSUME NO RESPONSIBILITY WHEN DELIVERY IS MADE INSIDE OF CURB

Received  
By





More saving.  
More doing.<sup>SM</sup>

1900 DAN EATON DRIVE  
OLEAN, NY 14760 (716)372-3725

6161 00029 72164 07/08/20 01:43 PM  
SALE CASHIER CAMRYN

032247182751 TB CONT 20LB <A> 42.98  
TURFBLDR 20LB CONTRACTORS GRASS SEED  
NLP Savings \$9.00

SUBTOTAL	42.98
SALES TAX	3.44
TOTAL	\$46.42

XXXXXXXXXXXX8593 MASTERCARD

USD\$ 46.42  
TA

AUTH CODE 09493G/8293741

Chip Read

AID A0000000041010

MASTERCARD

P.O.#/JOB NAME: HOMER STREET