

November 25, 2025

Brad Demo
Environmental Program Specialist 1
New York State Department of Environmental Conservation
700 Delaware Avenue
Buffalo, New York 14209

Re: New Concrete Plant – Additional Work
229 Homer Street (NYSDEC Site No. C905044)
Olean, New York

Dear Mr. Demo:

On behalf of Jamestown Macadam, Inc., Roux Environmental Engineering and Geology, D.P.C. (Roux), has prepared this letter to notify the New York State Department of Environmental Conservation (NYSDEC) of additional intrusive activities planned for the 229 Homer Street Site (NYSDEC Site No. C905044) associated with the new concrete plant. A Notification Addendum to Excavation Work Plan (EWP) was submitted by Roux to the NYSDEC and was subsequently approved on June 16, 2025. The additional work, as described below, will be conducted in accordance with the approved EWP.

Excavation Activities

As indicated on the attached updated Site Plan Drawing C-101, the following additional work is planned for the Site:

- One National Grid power pole will be installed in the northwest portion of the Site. The 45-foot, Class 3 power poles will be installed per the National Grid Clean Corridor Pole Set attached.
- Underground electric utilities and two utility poles will be installed. Electric services are associated with the existing building, block heaters, and fuel tanks.
- Underground water utilities will be installed. Water services are associated with two frost-free hose bib risers.
- A 30-foot by 60-foot pre-engineered metal building to house the 160-ton aggregate batcher. Typical cross sections for the piers and walls are attached.
- A new concrete pad south of the existing building.

During intrusive activities, Roux will provide oversight as well as two monitoring stations, one upwind and one downwind, adjusted on a daily or more frequent basis based on actual wind directions.

Reporting

This additional intrusive work will be included in both the Construction Closeout Report (CCR) and the Site Management Plan (SMP) update.

November 25, 2025
Page 2

Sincerely,

ROUX ENVIRONMENTAL ENGINEERING AND GEOLOGY, D.P.C.



Lori E. Riker, P.E.
Principal Engineer

Att.

cc: Adam Hoisington (JMI)
Jacob Hardy (Benson Construction)
Jess Dombrowski (Roux)



STOP-CALL BEFORE YOU DIG!

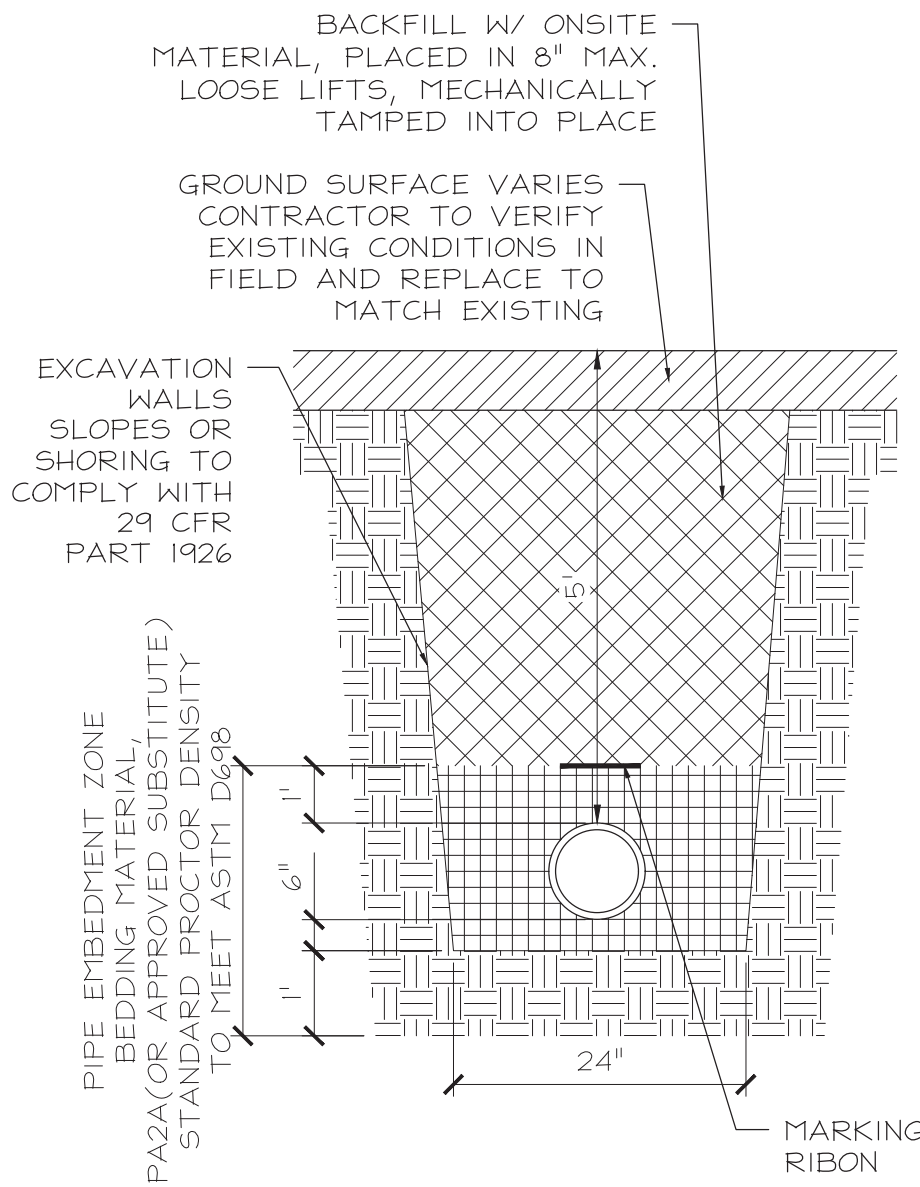
NEW YORK STATE LAW REQUIRES TWO WORKING DAYS
NOTICE BUT NOT MORE THAN 10 WORKING DAYS
UDig NY
CALL: 811

AT LEAST TWO DAYS BEFORE BUT NOT MORE THAN 10 DAYS BEFORE ANY
EXCAVATION, ETC., THE CONTRACTOR SHALL CALL/NOTIFY UDIG NY.

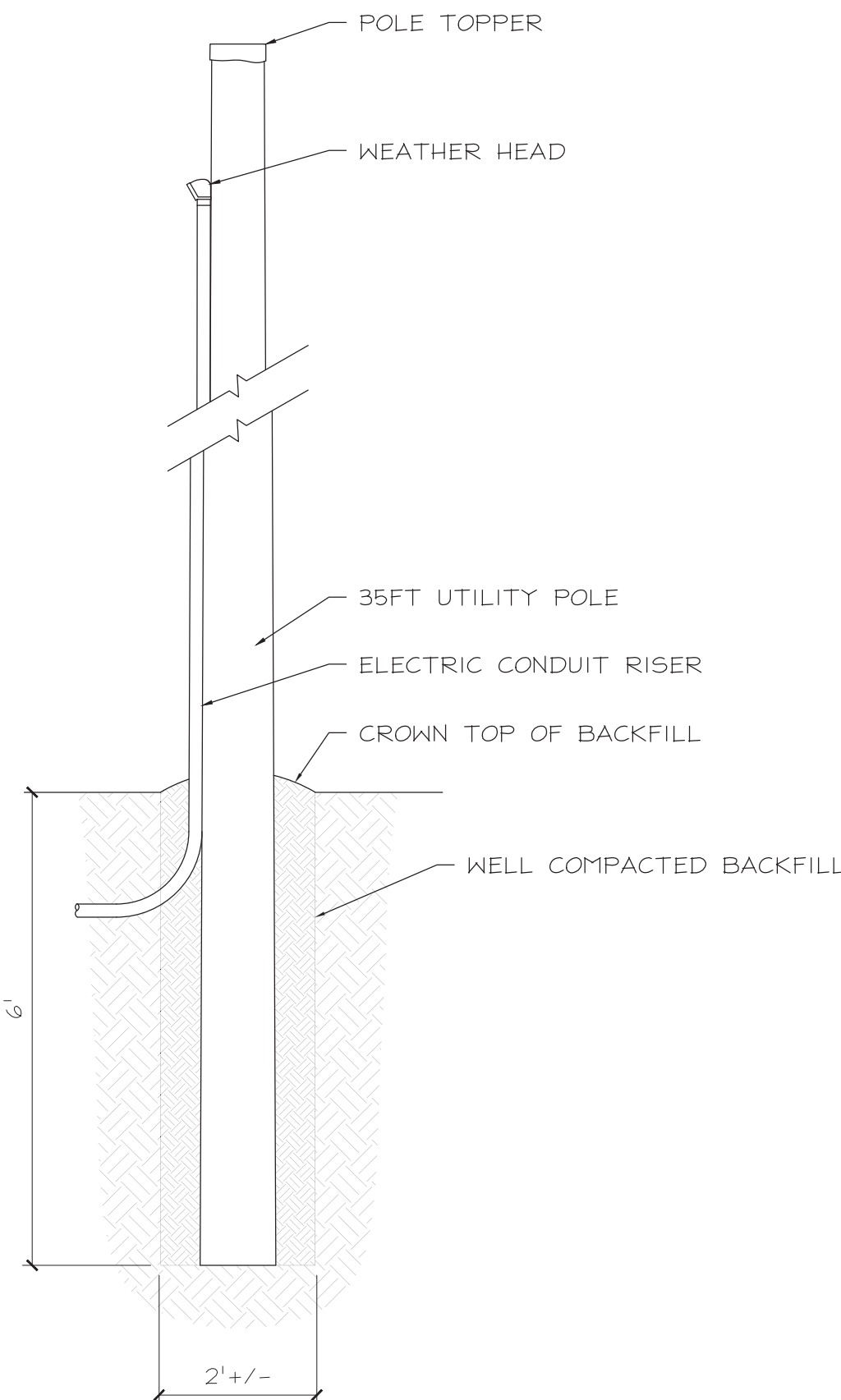
THE CONTRACTOR SHALL BE SOLELY RESPONSIBLE FOR ALL EXCAVATION WORK.

"UDIG NY" STANDARD COLOR CODES USED TO INDICATE TYPE OF
UNDERGROUND UTILITY:

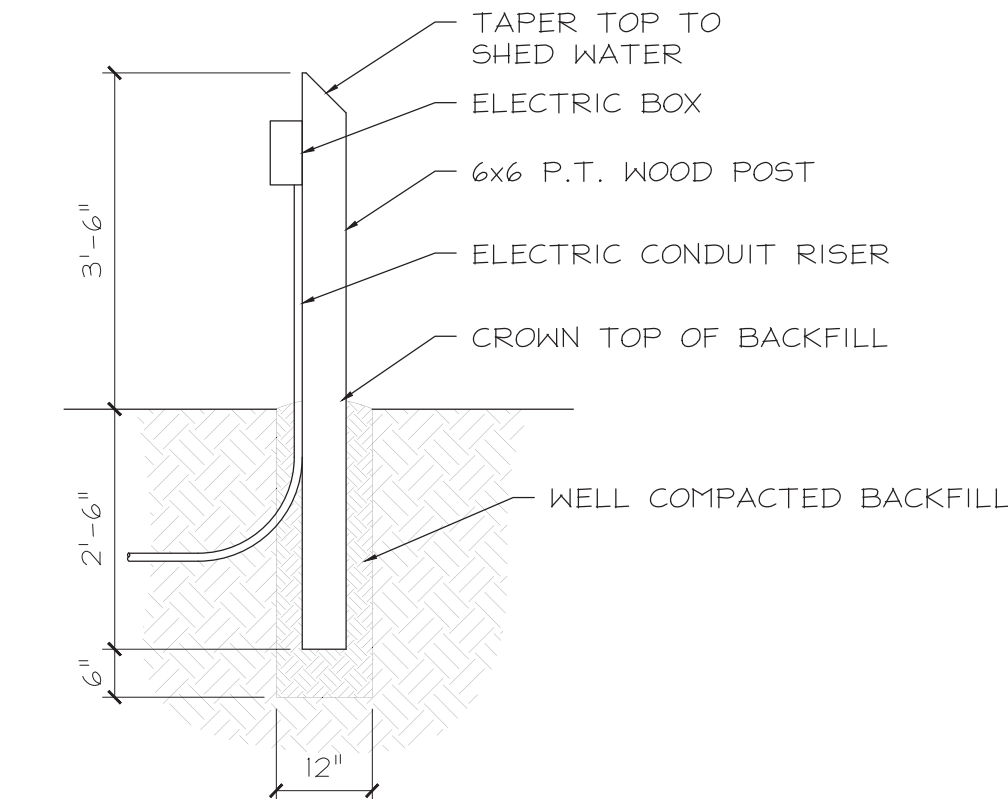
- YELLOW:** GAS, OIL, PETROLEUM PRODUCTS,
COMPRESSED GASES, AND ALL
OTHER HAZARDOUS LIQUIDS
- RED:** ELECTRIC POWER LINES AND/OR
CONDUIT.
- WHITE:** PROPOSED EXCAVATION
(FOR EXCAVATOR).
- ORANGE:** COMMUNICATION LINES AND/OR
CABLES, INC. TELEPHONE, TELEGRAPH,
AND CABLE TELEVISION.
- BLUE:** WATER.
- GREEN:** STORM AND SANITARY SEWERS
INCLUDING FORCE MAINS.



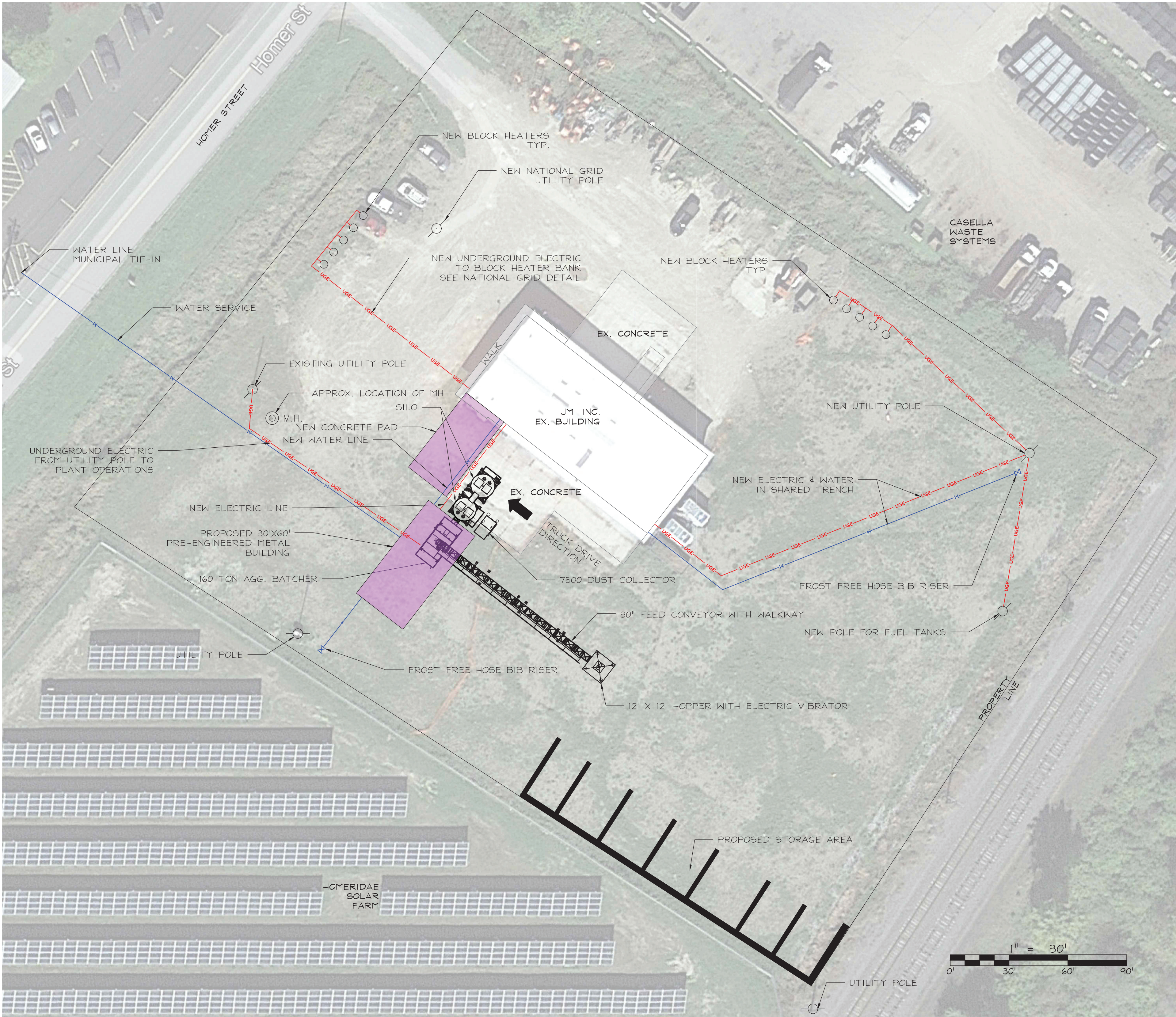
TYPICAL TRENCH DETAIL FOR DOMESTIC WATER LINES
SCALE: N.T.S.



TYPICAL UTILITY POLE DETAIL
SCALE: 1/2" = 1'-0"



TYPICAL BLOCK HEATER POLE DETAIL
SCALE: 1/2" = 1'-0"



SITE PLAN
SCALE: 1" = 30'



31 BOYLSTON STREET
BRADFORD, PA. 16701
P: 814.362.2000
cwallace@cjwallc.com

PROFESSIONAL STAMP

PROJECT NAME

JMI OLEAN

229 HOMER STREET
OLEAN, NY 14760

CLIENT INFO

BENSON CONSTRUCTION &
DEVELOPMENT LLC
130 SOUTH UNION ST
OLEAN, NY 14760

REVISIONS

#	DATE	BY	DESCRIPTION
1	5/15/25	THN	PRELIMINARY
2	5/29/25	CJW	ADDED BUILDING & WATER LINE
3	7/23/25	CJW	FINAL CONSTRUCTION DRAWINGS
4	11/10/25	CJW	REVISED UTILITY LAYOUT
5	11/25/25	CJW	UPDATED SITE DETAILS

PROJECT NO. 25-012

DWG DATE: 11/25/25

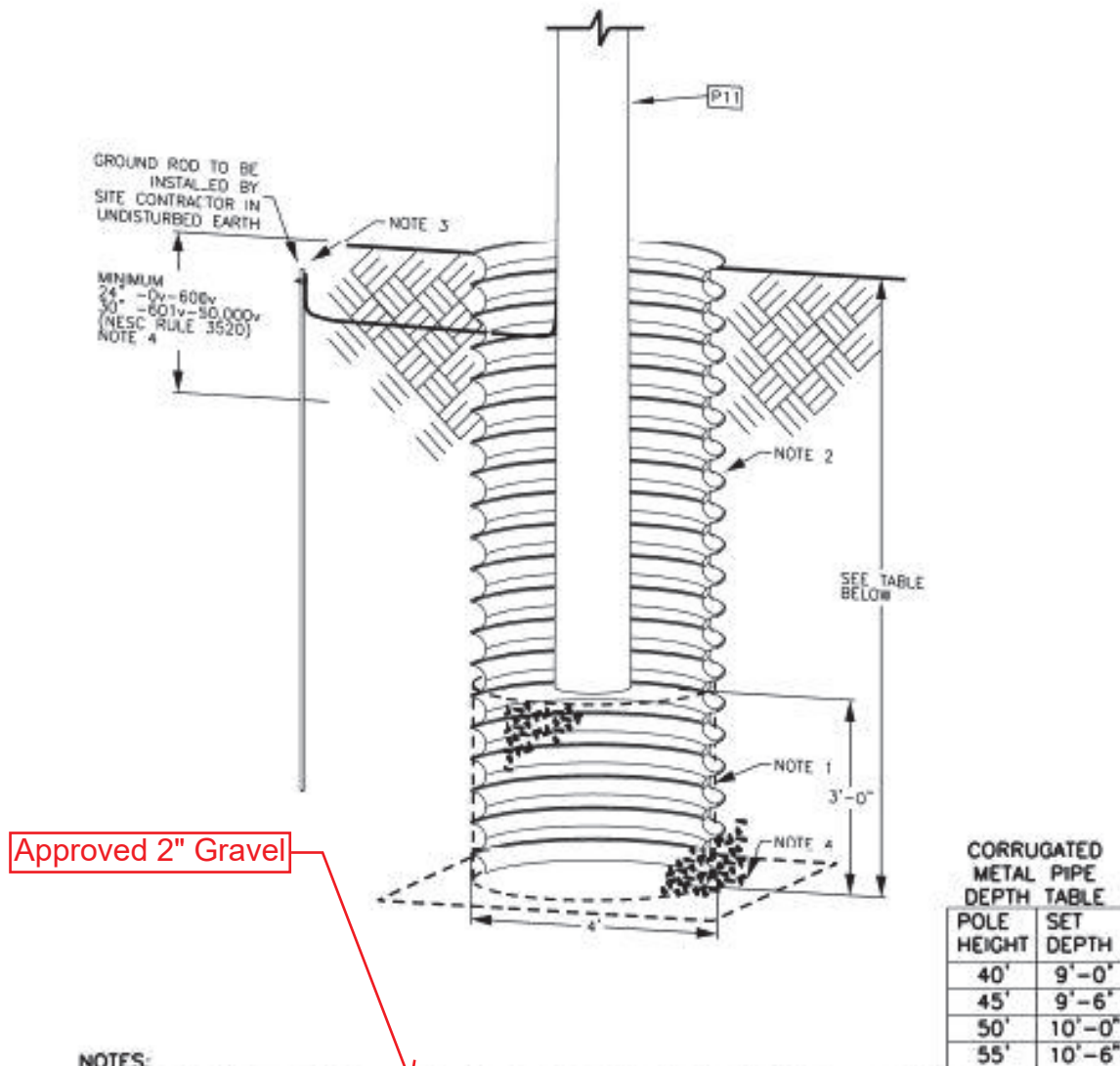
DRAWN BY: THN

SHEET TITLE

SITE PLAN

SHEET NUMBER

C-101



NOTES:

1. ~~CRUSHED STONE BACKFILL WITH AGGREGATE NOT EXCEEDING 3/4" IN DIAMETER SHALL BE USED TO BACK FILL POLES. CRUSHED STONE BACKFILL SHALL BE THOROUGHLY TAMPED USING MECHANICAL TAMPERS OR APPROPRIATE HAND TOOLS IN LAYERS NOT EXCEEDING 12" IN DEPTH.~~
2. CORRUGATED METAL PIPE WITH CORRUGATIONS 2- 3/8" X 1/2", MINIMUM 16 GAUGE.
3. SEE 13-114 FOR GROUND DETAILS.
4. INSTALL GEOTEXTILE FABRIC AS A BARRIER ON ALL CORRUGATED METAL PIPE OPENINGS.
5. UTILITY CREWS TO INSTALL POLE AND CONNECT TO GROUNDING ALREADY INSTALLED WITH CORRUGATED PIPE, GEOTEXTILE BARRIER AND CRUSHED STONE BACKFILL.
6. CORRUGATED STEEL PIPE SHALL BE FREE OF ALL BURS AND JAGGED EDGES IN ORDER TO REDUCE THE RISK OF CUTTING INJURIES DURING HANDLING. CORRUGATED PIPE SHALL BE FITTED WITH EDGE TRIM SUCH AS NEOPRENE RUBBER TO COVER BURS AND JAGGED EDGES.

Designer	Drawing	Date
MPR	ed02301	6/30/20

CLEAN CORRIDOR POLE SET

nationalgrid

OVERHEAD
CONSTRUCTION STANDARD

PAGE NUMBER

2-301

ISSUE

7/20

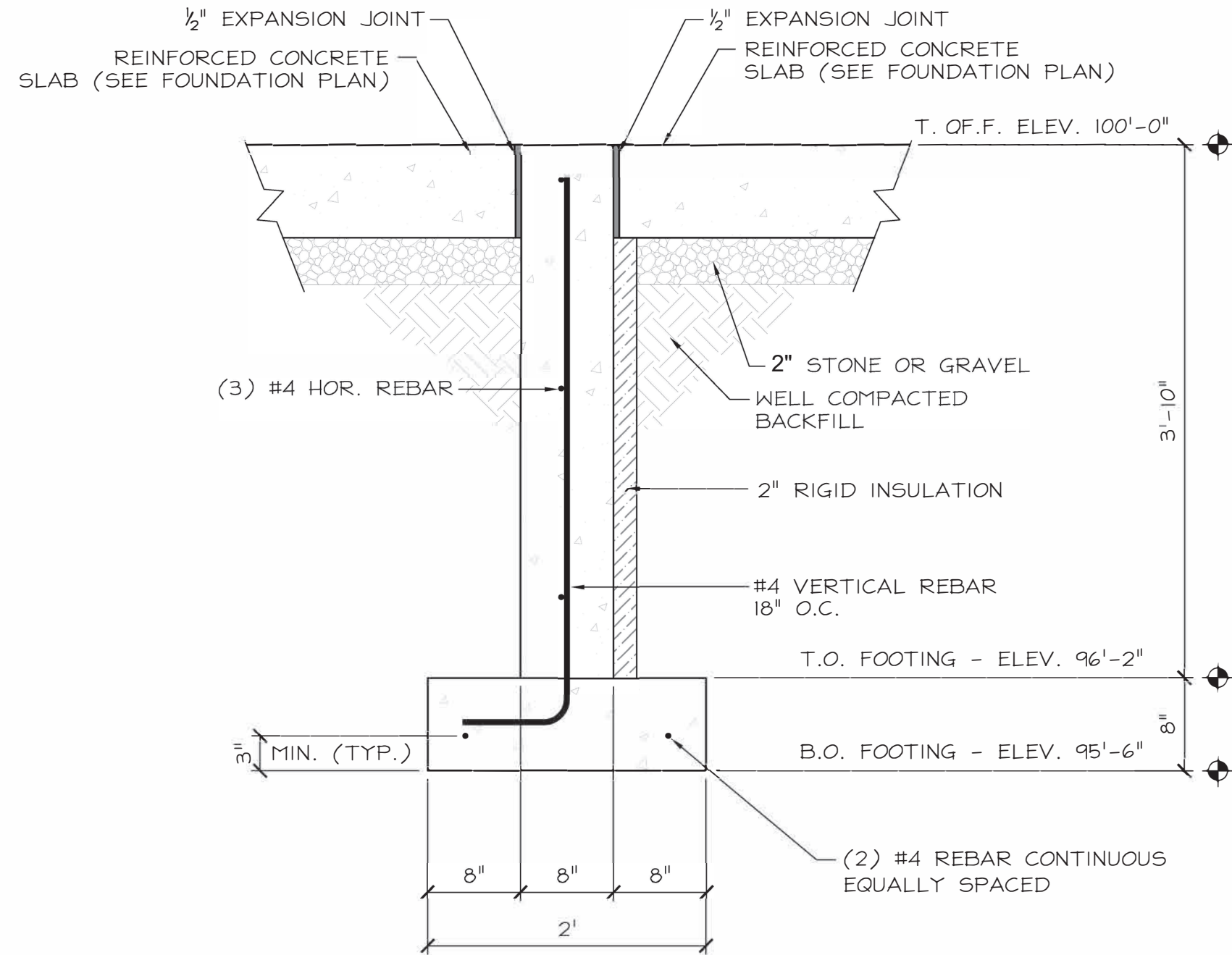


1. ~~CRUSHED STONE BACKFILL WITH AGGREGATE NOT EXCEEDING ¾" IN DIAMETER SHALL BE USED TO BACK FILL POLES. CRUSHED STONE BACKFILL SHALL BE THOROUGHLY TAMPED USING MECHANICAL TAMPERS OR APPROPRIATE HAND TOOLS IN LAYERS NOT EXCEEDING 12" IN DEPTH.~~
2. CORRUGATED METAL PIPE WITH CORRUGATIONS 2- 7/8" X 1/2", MINIMUM 16 GAUGE.
3. SEE 13-114 FOR GROUND DETAILS.
4. INSTALL GEOTEXTILE FABRIC AS A BARRIER.
5. CORRUGATED STEEL PIPE SHALL BE FREE OF ALL BURS AND JAGGED EDGES IN ORDER TO REDUCE THE RISK OF CUTTING INJURIES DURING HANDLING. CORRUGATED PIPE SHALL BE FITTED WITH EDGE TRIM SUCH AS NEOPRENE RUBBER TO COVER BURS AND JAGGED EDGES.

Designer	Drawing	Date
MPR	cd02301A	6/30/20

3 PHASE UG PRIMARY CLEAN CORRIDOR POLE SET

ISSUE	PAGE NUMBER	OVERHEAD CONSTRUCTION STANDARD	national grid
7/20	2-301A		



X
 S-101

TYPICAL CROSS SECTION
 SCALE: 1" = 1'-0"