



Department of  
Environmental  
Conservation

**Brownfield Cleanup Program  
Citizen Participation Plan  
for  
3821 River Road, Inc.**

July 2023

Site # C915003  
3821 River Road, Inc.  
3821 River Road  
Town of Tonawanda  
Erie County, New York

[www.dec.ny.gov](http://www.dec.ny.gov)

## Contents

<u>Section</u>	<u>Page Number</u>
1. What is New York's Brownfield Cleanup Program? .....	3
2. Citizen Participation Activities.....	3
3. Major Issues of Public Concern .....	8
4. Site Information .....	10
5. Investigation and Cleanup Process .....	12
Appendix A - Project Contacts and Locations of Reports and Information .....	15
Appendix B - Site Contact List .....	17
Appendix C - Site Location Map.....	20
Appendix D - Brownfield Cleanup Program Process .....	23

\* \* \* \* \*

**Note:** The information presented in this Citizen Participation Plan was current as of the date of its approval by the New York State Department of Environmental Conservation. Portions of this Citizen Participation Plan may be revised during the site's investigation and cleanup process.

Applicant: **3821 River Road, Inc. (“Applicant”)**  
Site Name: **3821 River Road, Inc. (“Site”)**  
Site Address: **3821 River Road, Tonawanda, New York 14150**  
Site County: **Erie**  
Site Number: **C915003**

## **1. What is New York’s Brownfield Cleanup Program?**

New York’s Brownfield Cleanup Program (BCP) works with private developers to encourage the voluntary cleanup of contaminated properties known as “brownfields” so that they can be reused and developed. These uses include recreation, housing, and business.

A *brownfield* is any real property that is difficult to reuse or redevelop because of the presence or potential presence of contamination. A brownfield typically is a former industrial or commercial property where operations may have resulted in environmental contamination. A brownfield can pose environmental, legal, and financial burdens on a community. If a brownfield is not addressed, it can reduce property values in the area and affect economic development of nearby properties.

The BCP is administered by the New York State Department of Environmental Conservation (NYSDEC) which oversees Applicants who conduct brownfield site investigation and cleanup activities. An Applicant is a person who has requested to participate in the BCP and has been accepted by NYSDEC. The BCP contains investigation and cleanup requirements, ensuring that cleanups protect public health and the environment. When NYSDEC certifies that these requirements have been met, the property can be reused or redeveloped for the intended use.

For more information about the BCP, go online at: <http://www.dec.ny.gov/chemical/8450.html> .

## **2. Citizen Participation Activities**

### *Why NYSDEC Involves the Public and Why It Is Important*

NYSDEC involves the public to improve the process of investigating and cleaning up contaminated sites, and to enable citizens to participate more fully in decisions that affect their health, environment, and social well-being. NYSDEC provides opportunities for citizen involvement and encourages early two-way communication with citizens before decision makers form or adopt final positions.

Involving citizens affected and interested in site investigation and cleanup programs is important for many reasons. These include:

- Promoting the development of timely, effective site investigation and cleanup programs that protect public health and the environment

- Improving public access to, and understanding of, issues and information related to a particular site and that site's investigation and cleanup process
- Providing citizens with early and continuing opportunities to participate in NYSDEC's site investigation and cleanup process
- Ensuring that NYSDEC makes site investigation and cleanup decisions that benefit from input that reflects the interests and perspectives found within the affected community
- Encouraging dialogue to promote the exchange of information among the affected/interested public, State agencies, and other interested parties that strengthens trust among the parties, increases understanding of site and community issues and concerns, and improves decision making.

This Citizen Participation (CP) Plan provides information about how NYSDEC will inform and involve the public during the investigation and cleanup of the site identified above. The public information and involvement program will be carried out with assistance, as appropriate, from the Applicant.

#### *Project Contacts*

Appendix A identifies NYSDEC project contact(s) to whom the public should address questions or request information about the site's investigation and cleanup program. The public's suggestions about this CP Plan and the CP program for the site are always welcome. Interested people are encouraged to share their ideas and suggestions with the project contacts at any time.

#### *Locations of Reports and Information*

The locations of the reports and information related to the site's investigation and cleanup program also are identified in Appendix A. These locations provide convenient access to important project documents for public review and comment. Some documents may be placed on the NYSDEC website. If this occurs, NYSDEC will inform the public in fact sheets distributed about the site and by other means, as appropriate.

#### *Site Contact List*

Appendix B contains the site contact list. This list has been developed to keep the community informed about, and involved in, the site's investigation and cleanup process. The site contact list will be used periodically to distribute fact sheets that provide updates about the status of the project. These will include notifications of upcoming activities at the site (such as fieldwork), as well as availability of project documents and announcements about public comment periods.

The site contact list includes, at a minimum:

- chief executive officer and planning board chairperson of each county, city, town and village in which the site is located;
- residents, owners, and occupants of the site and properties adjacent to the site;
- the public water supplier which services the area in which the site is located;
- any person who has requested to be placed on the site contact list;
- the administrator of any school or day care facility located on or near the site for purposes of posting and/or dissemination of information at the facility;
- location(s) of reports and information.

The site contact list will be reviewed periodically and updated as appropriate. Individuals and organizations will be added to the site contact list upon request. Such requests should be submitted to the NYSDEC project contact(s) identified in Appendix A. Other additions to the site contact list may be made at the discretion of the NYSDEC project manager, in consultation with other NYSDEC staff as appropriate.

**Note:** The first site fact sheet (usually related to the draft Remedial Investigation Work Plan) is distributed both by paper mailing through the postal service and through DEC Delivers, its email listserv service. The fact sheet includes instructions for signing up with the appropriate county listserv to receive future notifications about the site. See <http://www.dec.ny.gov/chemical/61092.html> .

Subsequent fact sheets about the site will be distributed exclusively through the listserv, except for households without internet access that have indicated the need to continue to receive site information in paper form. Please advise the NYSDEC site project manager identified in Appendix A if that is the case. Paper mailings may continue during the investigation and cleanup process for some sites, based on public interest and need.

### *CP Activities*

The table at the end of this section identifies the CP activities, at a minimum, that have been and will be conducted during the site's investigation and cleanup program. The flowchart in Appendix D shows how these CP activities integrate with the site investigation and cleanup process. The public is informed about these CP activities through fact sheets and notices distributed at significant points during the program. Elements of the investigation and cleanup process that match up with the CP activities are explained briefly in Section 5.

- **Notices and fact sheets** help the interested and affected public to understand contamination issues related to a site, and the nature and progress of efforts to investigate and clean up a site.
- **Public forums, comment periods and contact with project managers** provide opportunities for the public to contribute information, opinions and perspectives that have potential to influence decisions about a site's investigation and cleanup.

The public is encouraged to contact project staff at any time during the site's investigation and cleanup process with questions, comments, or requests for information. In addition, 3821 River Road, Inc. is committed to continuing to meet with community stakeholders and coordinating with the NYSDEC as appropriate to provide updates and gather inputs.

This CP Plan may be revised due to changes in major issues of public concern identified in Section 3 or in the nature and scope of investigation and cleanup activities. Modifications may include additions to the site contact list and changes in planned citizen participation activities.

#### *Technical Assistance Grant*

NYSDEC must determine if the site poses a significant threat to public health or the environment. This determination generally is made using information developed during the investigation of the site, as described in Section 5.

If the site is determined to be a significant threat, a qualifying community group may apply for a Technical Assistance Grant (TAG). The purpose of a TAG is to provide funds to the qualifying group to obtain independent technical assistance. This assistance helps the TAG recipient to interpret and understand existing environmental information about the nature and extent of contamination related to the site and the development/implementation of a remedy.

An eligible community group must certify that its membership represents the interests of the community affected by the site, and that its members' health, economic well-being or enjoyment of the environment may be affected by a release or threatened release of contamination at the site.

At the time the site was accepted into the BCP a significant threat determination had not yet been made.

To verify the significant threat status of the site, the interested public may contact the NYSDEC project manager identified in Appendix A.

For more information about TAGs, go online at <http://www.dec.ny.gov/regulations/2590.html>

Note: The table identifying the citizen participation activities related to the site's investigation and cleanup program follows on the next page:

Citizen Participation Activities	Timing of CP Activity(ies)
<b>Application Process:</b>	
<ul style="list-style-type: none"> <li>• Prepare site contact list</li> <li>• Establish document repository(ies)</li> </ul>	Completed
<ul style="list-style-type: none"> <li>• Publish notice in Environmental Notice Bulletin (ENB) announcing receipt of application and 30-day public comment period</li> <li>• Publish above ENB content in local newspaper</li> <li>• Mail above ENB content to site contact list</li> <li>• Conduct 30-day public comment period</li> </ul>	Completed
<b>After Execution of Brownfield Site Cleanup Agreement (BCA):</b>	
<ul style="list-style-type: none"> <li>• Prepare Citizen Participation (CP) Plan</li> </ul>	This document. Before start of Remedial Investigation <b>Note:</b> Applicant must submit CP Plan to NYSDEC for review and approval within 20 days of the effective date of the BCA.
<b>Before NYSDEC Approves Remedial Investigation (RI) Work Plan:</b>	
<ul style="list-style-type: none"> <li>• Distribute fact sheet to site contact list about proposed RI activities and announcing 30-day public comment period about draft RI Work Plan</li> <li>• Conduct 30-day public comment period</li> </ul>	The RI Work Plan was submitted with the BCP application. The public comment periods for the BCP Application and RI Work Plan were combined and the thirty-day public comment period ended on March 3, 2023 as identified in fact sheet.
<b>After Applicant Completes Remedial Investigation:</b>	
<ul style="list-style-type: none"> <li>• Distribute fact sheet to site contact list that describes RI results</li> </ul>	Before NYSDEC approves RI Report
<b>Before NYSDEC Approves Remedial Work Plan (RWP):</b>	
<ul style="list-style-type: none"> <li>• Distribute fact sheet to site contact list about draft RWP and announcing 45-day public comment period</li> <li>• Public meeting by NYSDEC about proposed RWP (if requested by affected community or at discretion of NYSDEC project manager)</li> <li>• Conduct 45-day public comment period</li> </ul>	Before NYSDEC approves RWP. Forty-five day public comment period begins/ends as per dates identified in fact sheet. Public meeting would be held within the 45-day public comment period.
<b>Before Applicant Starts Cleanup Action:</b>	
<ul style="list-style-type: none"> <li>• Distribute fact sheet to site contact list that describes upcoming cleanup action</li> </ul>	Before the start of cleanup action defined in the RWP.
<b>After Applicant Completes Cleanup Action:</b>	
<ul style="list-style-type: none"> <li>• Distribute fact sheet to site contact list that announces that cleanup action has been completed and that NYSDEC is reviewing the Final Engineering Report</li> <li>• Distribute fact sheet to site contact list announcing NYSDEC approval of Final Engineering Report and issuance of Certificate of Completion (COC)</li> </ul>	At the time the cleanup action has been completed.  <b>Note:</b> The two fact sheets are combined when possible if there is not a delay in issuing the COC.

### 3. Major Issues of Public Concern

This section of the CP Plan identifies major issues of public concern that relate to the site. Additional major issues of public concern may be identified during the course of the site's investigation and cleanup process.

The 3821 River Road project is an investigation and remediation project developed to allow the conversion of the former Rouse Breihan/Allied Fiber and Plastics Company (Allied) property into a property suitable for redevelopment and that poses no threat to human health or the environment.

The Site was originally developed by Allied<sup>1</sup> in the early 1950s and was operated as a manufacturing facility through 1982. Site operations by Allied included the polymerization of ethylene into low molecular weight polyethylene (trademark: A-C Polyethylene and Co-polymers), which was finished into powder, pelleted and solid forms of plastic. Allied sold the property to Rouse Breihan, Inc. in 1985, following the shutdown of all chemical processing activities. Rouse Breihan conducted management and laboratory testing for the Tonawanda Coke Corporation (TCC) on the 3821 River Road, Inc. BCP Site until 2018.

Major issues of public concern that have been identified during prior Site investigations consist of concentrations of chemicals in soil, groundwater, and storm sewers. Tar has been observed on the ground surface in the back of the property. Twelve (12) above ground storage tanks (ASTs) are present on the Site. The tanks previously contained various gases and liquids used during the former manufacturing processes. These tanks have been out of service since 1985.

During remedial investigations and remedial measures potential exposure to potential materials from the tanks, soils, groundwater, and storm sewer contents will be carefully managed. The potential exposures will be addressed throughout the site investigation, and the remediation process and plans starting with the procedures in the Remedial Investigation Work Plan, which will include a Community Air Monitoring Plan (CAMP), and a site-specific Project Safety, Health, and Environment Plan to be submitted to the NYSDEC for review prior to initiating the on-site investigations.

A comprehensive investigation of the Site (known as a Remedial Investigation) will be conducted starting in the late summer/early fall of 2023. There are currently no known potential exposures off the property. There are currently safety hazards across the property, and no one should access the property without permission and an escort. The facility had been operation for more than 60 years, but was closed in 1985, and as a result of time and weather, many overhead structures, floors, and underground utilities are potentially unstable. Manufacturing materials and constituents from the process are still present on the site and will be investigated and managed by 3821 River Road, Inc. As listed in the BCP Application, the following types of constituents are among the known compounds of concern and will be among those investigated at the site:

---

1. AlliedSignal acquired Honeywell International, Inc. in 1999 but the merged entity retained the Honeywell name.



- Asbestos
- Metals
- Semi-volatile Organic Compounds (SVOCs)
- Volatile Organic Compounds (VOCs)
- Cyanide

The remedial investigations that will be conducted are not limited to the compounds listed above (Metals, Cyanide, SVOCs, and VOCs) and will also include analysis for Polychlorinated Biphenyls (PCBs), Pesticides, Herbicides, Per- and polyfluoroalkyl substances (PFAS) and Ammonia.

The next steps that are either ongoing or soon to start, include:

- Asbestos Survey (ongoing) - A detailed survey of all buildings, tanks, and above ground utilities at the Site to determine what materials at the Site contain asbestos fibers.
- Asbestos Abatement - After the Asbestos Survey is completed, a plan will be developed to systematically remove or contain asbestos containing materials identified on the property.
- Remedial Investigation - A detailed investigation, including sample collection and analysis, of materials in tanks and containers, soil, groundwater, storm sewers, and building materials on the site.
- Interim Remedial Measures – These are limited actions to address conditions at the site that (1) represent known conditions that can be addressed without completion of the remedial investigation, (2) removal of materials or structures that would interfere with the remedial investigation, and (3) actions that can be implemented to improve site conditions prior to completion of the remedial investigation.

#### 4. Site Information

Appendix C contains a map identifying the location of the site.

##### *Site Description*

The 3821 River Road, Inc. property is located at 3821 River Road, Town of Tonawanda in Erie County, New York (Appendix C). The Site encompasses approximately 17.446 acres of land, and the center of the site is approximately 1.05 miles west of I-190 and located along the east side of River Road. The Niagara River is located approximately 0.45 miles to the west from the center of the Site. The surrounding properties are primarily former industrial use, electrical transmission rights-of-way, or vacant. The Riverview Innovation & Technology Campus (RITC, formerly The Tonawanda Coke Corporation [TCC]) is adjacent to Site to the east and north. The adjacent property to the south is an electrical transmission corridor and is owned by Niagara Mohawk Power Corporation (National Grid). River Road is directly adjacent to the west boundary of the Site and access to the Site is from an entrance along River Road. Approximately 27 buildings exist on the Site and 12 aboveground storage tanks (ASTs) with aboveground and below grade piping located in the center portion of the Site. The remaining buildings are unoccupied and have not been maintained since 2018.

##### *History of Site Use, Investigation, and Cleanup*

The Site was originally developed by Allied<sup>2</sup> in the early 1950s and was operated as a manufacturing facility through 1982. Site operations by Allied included the production of plastics (polymerization of ethylene into low molecular weight polyethylene [trademark: A-C Polyethylene and Co-polymers]), which was finished into powder, pelleted and solid forms of plastic.

During the summer of 1981, approximately 500 cubic yards (CY) of “tar” and soils were excavated and removed from an area in the eastern portion of the Site along the southern property boundary. The 0.07 acre “Former Coal Tar Site” (NYSDEC Inactive Hazardous Waste Site 915003C) consisted of an area of the plant property where pools of what was described as “coal tar”, from spillage and leakage during product-transfer operations, were located. The tar removal was completed by the TCC, under agreement with Allied, as part of the demolition of a section of the former plant.

The 3821 River Road, Inc. property was sampled by the United States Geological Survey (U.S.G.S.) in July of 1982 and in May of 1983 under the Niagara River Toxics Investigation. Chromium and lead exceeded concentrations when compared to samples taken from “undisturbed” soils in the surrounding Tonawanda area. A Phase I Investigation was completed in 1983 and an additional investigation was carried out at the end of 1988. Soil samples collected inside the pit (later registered as the Former Blowdown Pit Site #915003B) detected chromium and lead. Sediment from an onsite catch basin detected metals. Sampling and analysis of five off-

---

2. AlliedSignal acquired Honeywell International, Inc. in 1999 but the merged entity retained the Honeywell name.

site sewer samples showed no migration from this source. Sampling of monitoring wells over a one-year period detected by-products from the former manufacturing processes.

Allied sold the property to Rouse Breihan, Inc. in 1985, following the shutdown of all chemical processing activities. Rouse Breihan conducted management and laboratory testing for the Tonawanda Coke Corporation (TCC) on the 3821 River Road, Inc. BCP Site but did not produce plastic. For a period of time, a trucking firm also used a portion of the site for vehicle maintenance and parking.

In 1991, Allied excavated an area at the west end of the property where spent and off-specification batches of magnesium chromate catalyst were allegedly disposed/released. The excavation was completed under a Consent Order between Allied and NYSDEC. This area has historically been referenced as the “Blow Down Pit” and was reportedly in use from 1958 to 1962. The 0.02 acre Blow Down Pit was approximately 40-feet in diameter. NYSDEC notified Allied in May 1995 that the 0.02-acre Former Blowdown Pit Site<sup>3</sup> was delisted from the NYSDEC Registry of Inactive Hazardous Waste Disposal Sites. The NYSDEC Inactive Hazardous Waste Site number is 915003B.

In July of 1998, NYSDEC notified Allied that subsequent investigations had identified the presence of by-products in the groundwater upgradient of the Former Blow-down Pit Site. In November 1998, NYSDEC acknowledged Allied’s agreement to voluntarily proceed with additional investigations and identified specific investigation focus areas.

Additional investigation activities were completed at the Site between 2016 and 2021. These investigations identified the presents of by-products from the former manufacturing processes in the shallow groundwater and soil.

A Storm Sewer Investigation focused on the 36-inch storm sewer which traverses the western portion of the Site. The sampling detected compounds related to the presence of by-products from the former manufacturing operations.

3821 River Road, Inc will carry out major Investigations to assess the impacts of the entire site, not limited to the identified areas. Sampling associated with specific processing and activities, and ongoing routine monitoring will be conducted at the Site. The data from prior investigation reports have allowed an assessment of the character of the Site with respect to qualification for the BCP Program. Additional data is needed to fully characterize the nature and extent of contamination at the Site and will be collected during the upcoming Remedial Investigation.

The reports referenced to gain an understanding of the Site included:

1. Tonawanda Plastics Site NYSDEC ID 915003 Draft Site Investigation Summary Report, Parsons, 2021
2. Tonawanda Plastics Investigation Summary Report, Parsons, 2017

---

3. Note: In some previous documents this was also referred to as the chromium blow-down removal area.

Additional available site-specific documents are available on the NYSDEC Info Locator website. The direct link to the document folder on Info Locator is <https://www.dec.ny.gov/data/DecDocs/C915003/>.

## 5. Investigation and Cleanup Process

### *Application*

The Applicant has applied for and been accepted into New York's Brownfield Cleanup Program as a **Volunteer**. This means that the Applicant was not responsible for the disposal or discharge of the contaminants or whose ownership or operation of the site took place after the discharge or disposal of contaminants. The Volunteer must fully characterize the nature and extent of contamination onsite, and must conduct a "qualitative exposure assessment," a process that characterizes the actual or potential exposures of people, fish and wildlife to contaminants on the site and to contamination that may have migrated from the site.

The Applicant in its Application proposes that the site will be used for **restricted** purposes.

To achieve this goal, the Applicant will conduct **investigation and cleanup** activities at the site with oversight provided by NYSDEC. The Brownfield Cleanup Agreement executed by NYSDEC and the Applicant sets forth the responsibilities of each party in conducting these activities at the site.

### *Investigation*

The Applicant will conduct an investigation of the site officially called a "remedial investigation" (RI). This investigation will be performed with NYSDEC oversight. The Applicant developed a remedial investigation workplan, which was subject to public comment.

The site investigation has several goals:

- 1) define the nature and extent of contamination in soil, surface water, groundwater and any other parts of the environment that may be affected;
- 2) identify the source(s) of the contamination;
- 3) assess the impact of the contamination on public health and the environment; and
- 4) provide information to support the development of a proposed remedy to address the contamination or the determination that cleanup is not necessary.

The Applicant submitted a draft "Remedial Investigation Work Plan" to NYSDEC for review and approval. NYSDEC made the draft plan available to the public review during a 30-day public comment period.

When the investigation is complete, the Applicant will prepare and submit a report that summarizes the results. This report also will recommend whether cleanup action is needed to address site-related contamination. The investigation report is subject to review and approval by NYSDEC.

NYSDEC will use the information in the investigation report to determine if the site poses a significant threat to public health or the environment. If the site is a “significant threat,” it must be cleaned up using a remedy selected by NYSDEC from an analysis of alternatives prepared by the Applicant and approved by NYSDEC. If the site does not pose a significant threat, the Applicant may select the remedy from the approved analysis of alternatives.

#### *Interim Remedial Measures*

An Interim Remedial Measure (IRM) is an action that can be undertaken at a site when a source of contamination or exposure pathway can be effectively addressed before the site investigation and analysis of alternatives are completed. If an IRM is likely to represent all or a significant part of the final remedy, NYSDEC will require a 30-day public comment period.

#### *Remedy Selection*

When the investigation of the site has been determined to be complete, the project likely would proceed in one of two directions:

1. The Applicant may recommend in its investigation report that no action is necessary at the site. In this case, NYSDEC would make the investigation report available for public comment for 45 days. NYSDEC then would complete its review, make any necessary revisions, and, if appropriate, approve the investigation report. NYSDEC would then issue a “Certificate of Completion” (described below) to the Applicant.

**or**

2. The Applicant may recommend in its investigation report that action needs to be taken to address site contamination. After NYSDEC approves the investigation report, the Applicant may then develop a cleanup plan, officially called a “Remedial Work Plan”. The Remedial Work Plan describes the Applicant’s proposed remedy for addressing contamination related to the site.

When the Applicant submits a draft Remedial Work Plan for approval, NYSDEC would announce the availability of the draft plan for public review during a 45-day public comment period.

#### *Cleanup Action*

NYSDEC will consider public comments, and revise the draft cleanup plan if necessary, before approving the proposed remedy. The New York State Department of Health (NYSDOH) must concur with the proposed remedy. After approval, the proposed remedy becomes the selected remedy. The selected remedy is formalized in the site Decision Document.

The Applicant may then design and perform the cleanup action to address the site contamination. NYSDEC and NYSDOH oversee the activities. When the Applicant completes cleanup activities, it will prepare a final engineering report that certifies that cleanup requirements have been achieved or will be achieved within a specific time frame. NYSDEC will review the report to be

certain that the cleanup is protective of public health and the environment for the intended use of the site.

### *Certificate of Completion*

When NYSDEC is satisfied that cleanup requirements have been achieved or will be achieved for the site, it will approve the final engineering report. NYSDEC then will issue a Certificate of Completion (COC) to the Applicant. The COC states that cleanup goals have been achieved, and relieves the Applicant from future liability for site-related contamination, subject to certain conditions. The Applicant would be eligible to redevelop the site after it receives a COC.

### *Site Management*

The purpose of site management is to ensure the safe reuse of the property if contamination will remain in place. Site management is the last phase of the site cleanup program. This phase begins when the COC is issued. Site management incorporates any institutional and engineering controls required to ensure that the remedy implemented for the site remains protective of public health and the environment. All significant activities are detailed in a Site Management Plan.

An *institutional control* is a non-physical restriction on use of the site, such as a deed restriction that would prevent or restrict certain uses of the property. An institutional control may be used when the cleanup action leaves some contamination that makes the site suitable for some, but not all uses.

An *engineering control* is a physical barrier or method to manage contamination. Examples include: caps, covers, barriers, fences, and treatment of water supplies.

Site management also may include the operation and maintenance of a component of the remedy, such as a system that pumps and treats groundwater. Site management continues until NYSDEC determines that it is no longer needed.

**Appendix A -  
Project Contacts and Locations of Reports and Information**

**Project Contacts**

For information about the site's investigation and cleanup program, the public may contact any of the following project staff:

**New York State Department of Environmental Conservation (NYSDEC):**

Benjamin McPherson  
Project Manager  
NYSDEC Region 9  
Division of Environmental Remediation  
700 Delaware Avenue  
Buffalo, NY 14209  
716-851-7220  
benjamin.mcpherson@dec.ny.gov

Megan Gollwitzer  
Citizen Participation Specialist  
NYSDEC 9  
Division of Environmental Remediation  
700 Delaware Avenue  
Buffalo, NY 14209  
716-851-7201  
megan.gollwizer@dec.ny.gov

Angela Martin  
New York State Department of Health (NYSDOH)  
Bureau of Environmental Exposure Investigation  
Project Manager  
Empire State Plaza  
Corning Tower Room 1787  
Albany, NY 12237  
518-402-7860

## **Locations of Reports and Information**

The facilities identified below are being used to provide the public with convenient access to important project documents:

NYSDEC Region 9  
Division of Environmental Remediation  
700 Delaware Avenue  
Buffalo, NY 14209  
716-851-7220  
Hours: By Appointment Only

NYSDEC  
625 Broadway  
Albany, NY 12233-746  
Phone: (888) 459-8667  
Hours: By Appointment Only

Buffalo & Erie County Public Library (Central Branch)  
1 Lafayette Square  
Buffalo, NY 14203  
Phone: (716) 858-8900  
Hours: Mon – Sat: 8:30AM – 6PM  
Sun: 12 – 5PM

Town of Tonawanda Public Library (Kenmore Branch)  
160 Delaware Road  
Kenmore, NY 14217  
Phone: (716) 873-2842  
Hours: Mon – Sat: 10 AM to 5 PM  
Sun: 12 PM to 5 PM



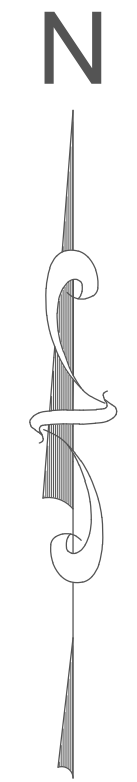
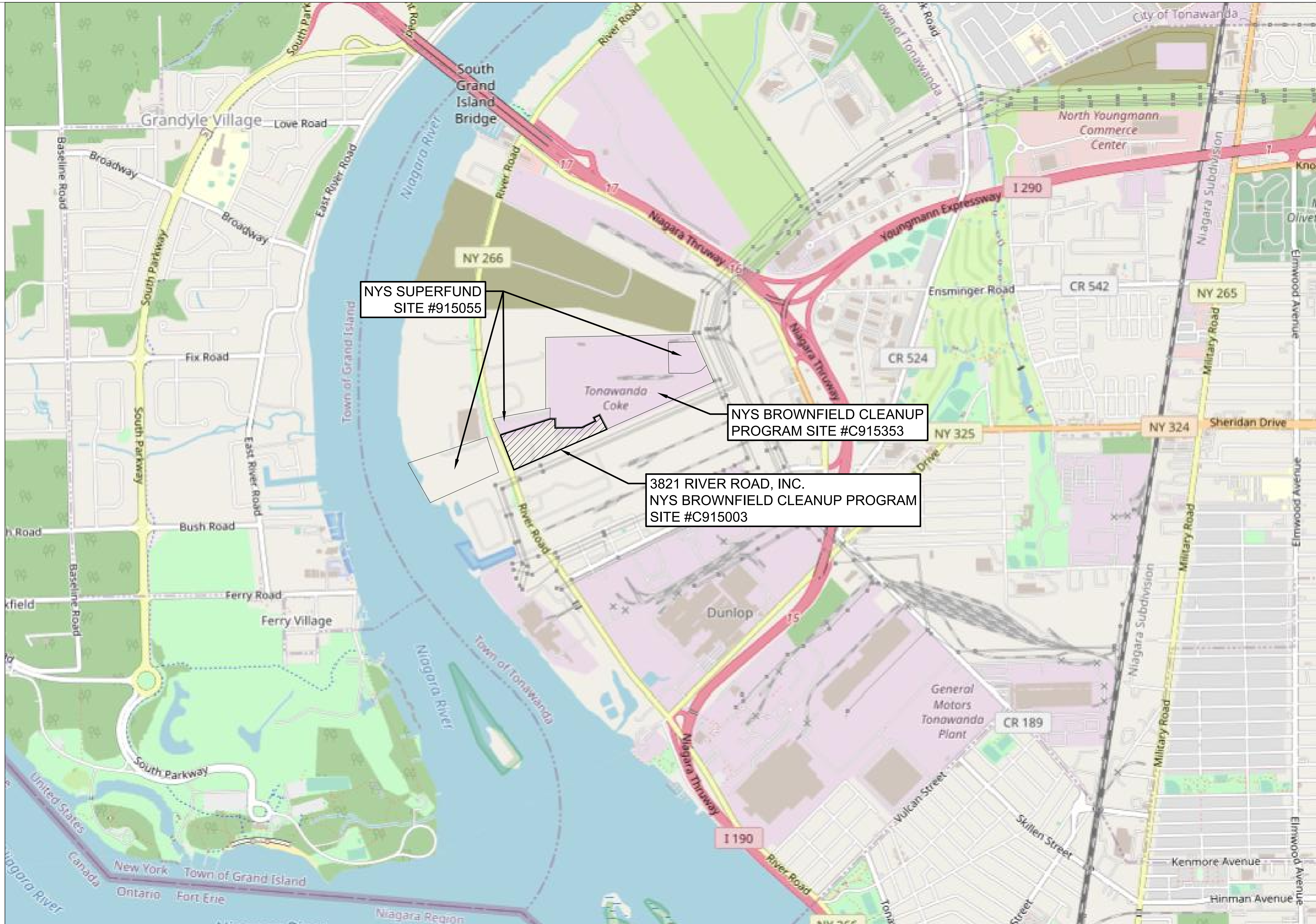
### Appendix B - Site Contact List

TITLE	FIRST	LAST	Email	ADDRESS	CITY / TOWN	STATE	ZIPCODE
<b>Elected Officials</b>							
Erie County Executive	Mark	Poloncarz	countyexecutive@erie.gov	95 Franklin Street, 16th floor	Buffalo	NY	14202
U.S. Congressman	Brian	Higgins	-	726 Exchange Street, Suite 601	Buffalo	NY	14210
New York State Senator	Timothy	Kennedy	-	37 Franklin Street, #550	Buffalo	NY	14202
New York State Senator	Sean	Ryan	-	40 LaRiviere Drive, Suite 121	Buffalo	NY	14202
New York State Assembly Majority Leader	Crystal	Peoples-Stokes	-	425 Michigan Avenue	Buffalo	NY	14203
New York State Assembly	William	Conrad	-	34 Pequet Parkway	Tonawanda	NY	14150
Erie County Legislator	John	Bargnesi	john.bargnesijr@erie.gov	2165 Sheridan Drive	Tonawanda	NY	14233
Commissioner, Environment and Planning	Daniel	Castle	daniel.castle@erie.gov	95 Franklin Street, 10 <sup>th</sup> Floor	Buffalo	NY	14202
Tonawanda Supervisor	Joseph	Emminger	jemminger@tonawanda.ny.us	2919 Delaware Avenue, Rm 11	Kenmore	NY	14217
Tonawanda Councilmember	Shannon	Patch	spatch@tonawanda.ny.us	2919 Delaware Avenue	Kenmore	NY	14217
Tonawanda Councilmember	Carl	Szarek	-	2919 Delaware Avenue	Kenmore	NY	14217
Tonawanda Councilmember	Gina	Santa Maria	gsantamaria@tonawanda.ny.us	2919 Delaware Avenue	Kenmore	NY	14217
Tonawanda Councilmember	Jill	OMalley	jomalley@tonawanda.ny.us	2919 Delaware Avenue	Kenmore	NY	14217
Director of Community Development	James	Hartz	jhartz@tonawanda.ny.us	169 Sheridan Parkside Drive	Tonawanda	NY	14150

<b>Document Repositories</b>							
Town of Tonawanda Public Library - Kenmore Branch	Mary	Muscarella	-	160 Delaware Road	Kenmore	NY	14217
Buffalo & Erie County Public Library	April	Tompkins	-	1 Lafayette Square	Buffalo	NY	14203
<b>Interested Parties</b>							
Riverview Innovation & Technology Campus, Inc.	Jon	Williams	-	140 Lee Street, Ste 200	Buffalo	NY	14210
National Grid			-	300 Erie Boulevard West	Syracuse	NY	13202
<b>Media</b>							
Buffalo News	Business	Desk	fin@buffnews.com	One News Plaza, P.O. Box 100	Buffalo	NY	14240
Buffalo News	David	Robinson	drobinson@buffnews.com	One News Plaza, P.O. Box 100	Buffalo	NY	14240
Buffalo News	Jonathan	Epstein	jepstein@buffnews.com	One News Plaza, P.O. Box 100	Buffalo	NY	14240
Ken-Ton Bee Editor	Chita	Selvaraj	chitras@beenews.com	5564 Main Street	Buffalo	NY	14221
<b>Public Water/Wastewater Supplier</b>							
Town of Tonawanda Water Resources	Michael	Kessler	mkessler@tonawanda.ny.us	779 Two Mile Creek Road	Tonawanda	NY	14150
Crew Chief	Mike	Metzger		525 Belmont Avenue	Buffalo	NY	14223

<b>Local Schools/Churches</b>							
Riverview Elementary School Principal	Claudia	Panaro	-	55 Taylor Drive	Tonawanda	NY	14150
PS #65 - Roosevelt ECC Principal	Michelle	Hope Barnes	-	249 Skillen Street	Buffalo	NY	14207
Charter School for Applied Technologies	Sue	Jurewicz	-	2303 Kenmore Avenue	Buffalo	NY	14207
Tonawanda Middle School Principal	David	Sellan	-	600 Fletcher Street	Tonawanda	NY	14150
<b>Community Organizations</b>							
Citizen Science Community Resources	Jackie	James- Creedon	jackie@csresources.org	3200 Elmwood Avenue, Rm 212	Kenmore	NY	14217
The Clean Air Coalition of WNY	Chris	Murawski	info@cacwny.org	52 Linwood Avenue	Buffalo	NY	14209
Buffalo Niagara Waterkeeper	Jill	Jedlicka	jedlicka@bnwaterkeeper.org	721 Main Street	Buffalo	NY	14203

## Appendix C - Site Location Maps



**FIGURE 1 - SITE LOCATION**  
**3821 RIVER ROAD, INC.**  
**NYS BROWNFIELD CLEANUP PROGRAM**  
**SITE #C915003**

3821 RIVER ROAD  
 TONAWANDA NEW YORK, 14150

**INVENTUM ENGINEERING**  
 441 CARLISLE DRIVE  
 SUITE C  
 HERNDON, VIRGINIA 20170  
 (703) 722-6049  
 www.InventumEng.com

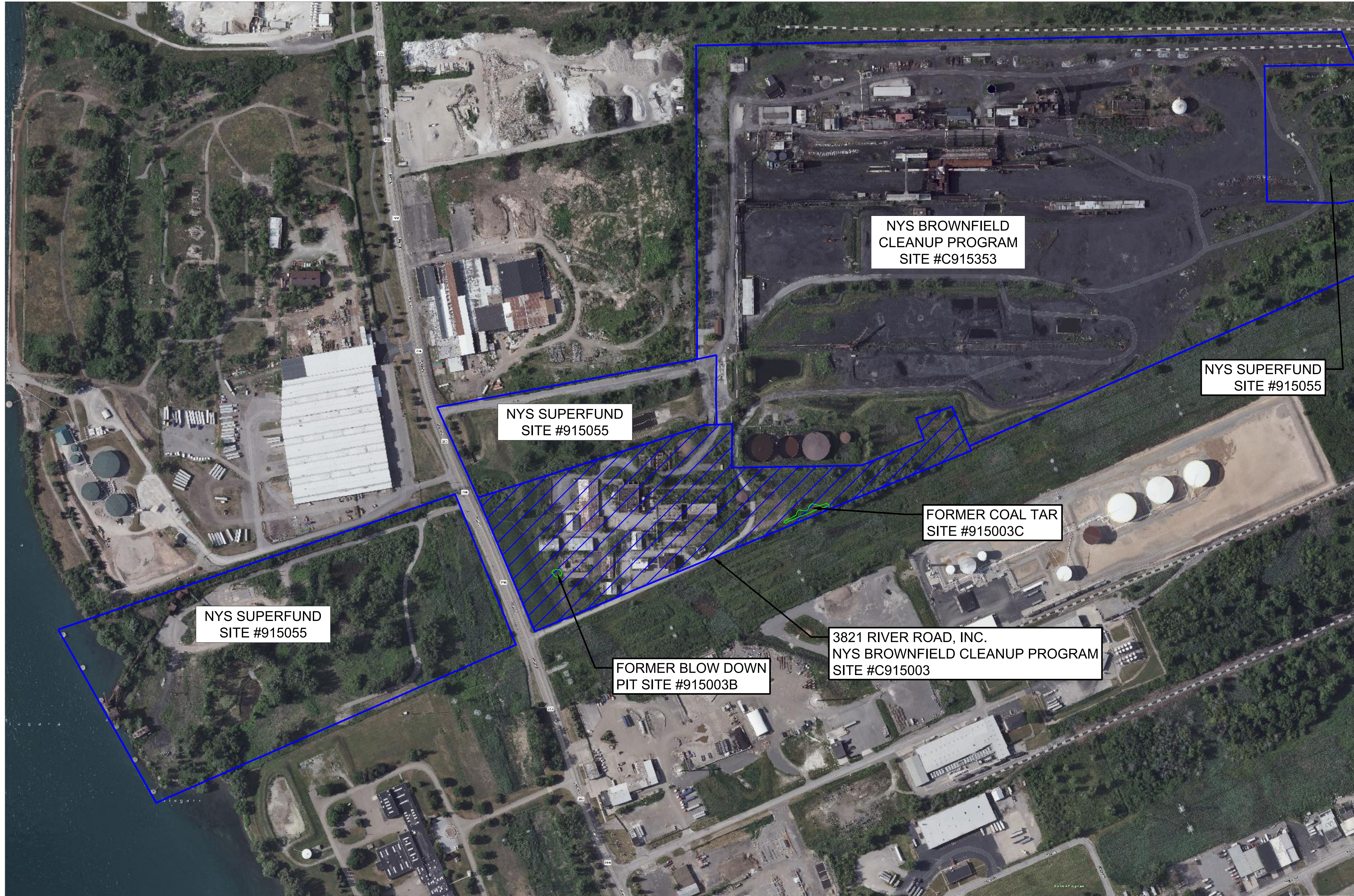
**FIGURE - 1**

DRAWING NUMBER

DRAWING BY: RB  
 CHECKED:  
 APPROVED:

PROPERTY OF INVENTUM ENGINEERING  
 IMPORTANT: THIS DRAWING PRINT IS LOANED FOR MUTUAL ASSISTANCE AND AS SUCH IS SUBJECT TO RECALL AT ANY TIME. REPRODUCTION IN ANY FORM FOR THE BENEFIT OF PARTIES OTHER THAN NECESSARY PARTNERS, FINANCIAL INSTITUTIONS, SUBSIDIARIES OR AFFILIATES WITHOUT THE WRITTEN CONSENT OF INVENTUM ENGINEERING.

NOTICE: THIS DRAWING HAS BEEN PREPARED UNDER THE SUPERVISION AND SEAL OF A LICENSED PROFESSIONAL ENGINEER. IT IS THE RESPONSIBILITY OF THE ENGINEER TO VERIFY THE ACCURACY OF ALL INFORMATION AND TO BE RESPONSIBLE FOR ANY PERSONS UNLESS ACTING UNDER THE DIRECTION OF A LICENSED PROFESSIONAL ENGINEER. TO ALTER THIS DOCUMENT IN ANY WAY.



Google Maps, www.google.com/maps

D

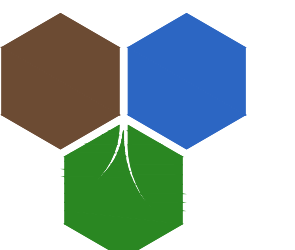
DRAWING BY	RB
CHECKED	
APPROVED	

PROPERTY OF INVENTUM ENGINEERING  
 IMPORTANT: THIS DRAWING PRINT IS LOANED FOR MUTUAL ASSISTANCE AND AS SUCH IS SUBJECT TO RECALL AT ANY TIME. REPRODUCTION IN ANY FORM FOR THE BENEFIT OF PARTIES OTHER THAN NECESSARY PARTNERS, FINANCIAL INSTITUTIONS, SUBSIDIARIES OR AGENTS OF INVENTUM ENGINEERING WITHOUT THE WRITTEN CONSENT OF INVENTUM ENGINEERING.  
 NOTICE: THIS DRAWING HAS BEEN PREPARED UNDER THE AUTHORITY OF A LICENSED PROFESSIONAL ENGINEER. ANY VIOLATION OF STATE LAWS FOR ANY PERSONS UNLESS ACTING UNDER THE DIRECTION OF A LICENSED PROFESSIONAL ENGINEER, TO ALTER THIS DOCUMENT IN ANY WAY.

**FIGURE 2**  
 3821 RIVER ROAD, INC.  
 NYS BROWNFIELD CLEANUP PROGRAM  
 SITE #C915003

3821 RIVER ROAD  
 TONAWANDA NEW YORK, 14150

**INVENTUM ENGINEERING**  
 441 CARLISLE DRIVE  
 SUITE C  
 HERNDON, VIRGINIA 20170  
 (703) 722-6049  
 www.InventumEng.com



**FIGURE - 2**  
 DRAWING NUMBER  
**SITE AERIAL**

# Appendix D– Brownfield Cleanup Program Process

