



Department of
Environmental
Conservation

Brownfield Cleanup Program (BCP) and State Superfund Program (SSF) Process Overview

Division of Environmental Remediation

March 2021

General Remedial Program Steps

Remedial Investigation Work Plan

What will be done to get a clear picture of the site?

SSF: DEC or other responsible party assembles a detailed plan to fully investigate the site. **Fact Sheets issued to announce the work plan and the start of the investigation field work.**

BCP: Applicant assembles the work plan. DEC and DOH review and comment. Approval after comments are addressed. **There is a 30 day public comment period for the RIWP. Fact sheet issued to announce review is in progress.**

General Remedial Program Steps

Remedial Investigation Report (RIR)

Here is what we learned about the site.

SSF and BCP: This report summarizes the results of the remedial investigation. **A Fact Sheet is issued announcing that the report is available.**

General Remedial Program Steps

Decision Documents

How are we going to clean this up?

SSF: DEC develops a Proposed Remedial Action Plan (PRAP). **There is a 30 day public comment period and a public meeting for the PRAP.** Comments received for the PRAP are considered in development of a Record of Decision (ROD) which outlines the cleanup process.

BCP: Applicant analyzes several cleanup methods and chooses one. DEC and DOH review the analysis and a Decision Document is developed outlining the accepted choice. **A Fact Sheet is issued announcing the proposed decision and there is a 45 day public comment period prior to finalizing the Decision Document.**



Department of
Environmental
Conservation

General Remedial Program Steps

Completion

SSF and BCP: A Final Engineering Report (FER) detailing the work completed is reviewed by DEC and DOH. After approval of the FER a Certificate of Completion (COC) is issued for BCP sites and some SSF sites. **Fact Sheet are issued to announce the availability of the FER and the issuance of the COC.**

General Remedial Program Steps

Site Management

SSF and BCP: Removal of all contamination is not always possible. A Site Management Plan (SMP) is put in place for any site that does not reach unrestricted clean-up levels. The SMP details what controls must be put in place and maintained to manage remaining contamination.

Periodic Review Reports (PRRs) are reviewed by DEC on a set schedule to ensure controls remain in place and functional.

Where to Find Information

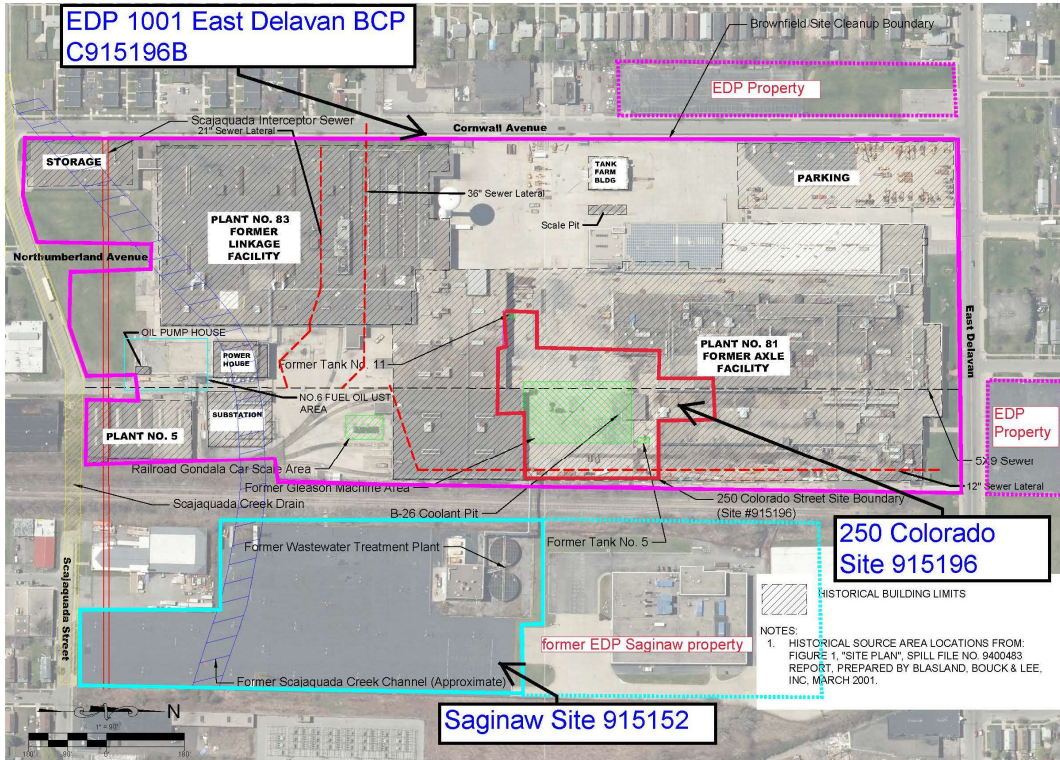
- Search for sites and access site documents using **DECinfo Locator**
- Go to www.dec.ny.gov and click on the link under Popular Topics
- Fact sheets, work plans, reports and more are available for viewing
- Information about many other DEC programs is also available

1001 East Delavan Property SSF and BCP Site Background Information

- 1001 East Delavan St. BCP site and 250 Colorado St. SSF site are portions of the former General Motors/American Axle Plant.
- GM began manufacturing automotive parts and assemblies in the 1920s. The plant buildings expanded in size and number over the decades. Plant complex occupied 52 acres.
- The former plant also includes the Saginaw site previously remediated under an Order with GM. Remediation completed in 2001. Currently in site management by EDP.
- GM sold the plant to American Axle in 1994; American Axle shut down operations and sold the plant to East Delavan Properties (EDP) in 2008. GM maintained environmental liabilities.
- GM implements an interim remedial measure to collect oil at the B-26 pit in 1991. Treatment system upgraded in 2006. EDP upgraded the system in 2011. System maintained by EDP and overhauled in 2018.
- GM entered an order to investigate and remediate the 2.65 acre 250 Colorado St. Site in 2005. The B-26 pit is located on the 250 Colorado St. Site.
- GM declares bankruptcy in 2011. Post bankruptcy GM is absolved of environmental liabilities.
- EDP enters agreement with DEC in 2018 and DEC assumes remediation of 250 Colorado St. Site.
- EDP enters the BCP for 1001 East Delavan in 2018 (32.88 acres).



Former GM/American Axle Plant Site Remediation Areas

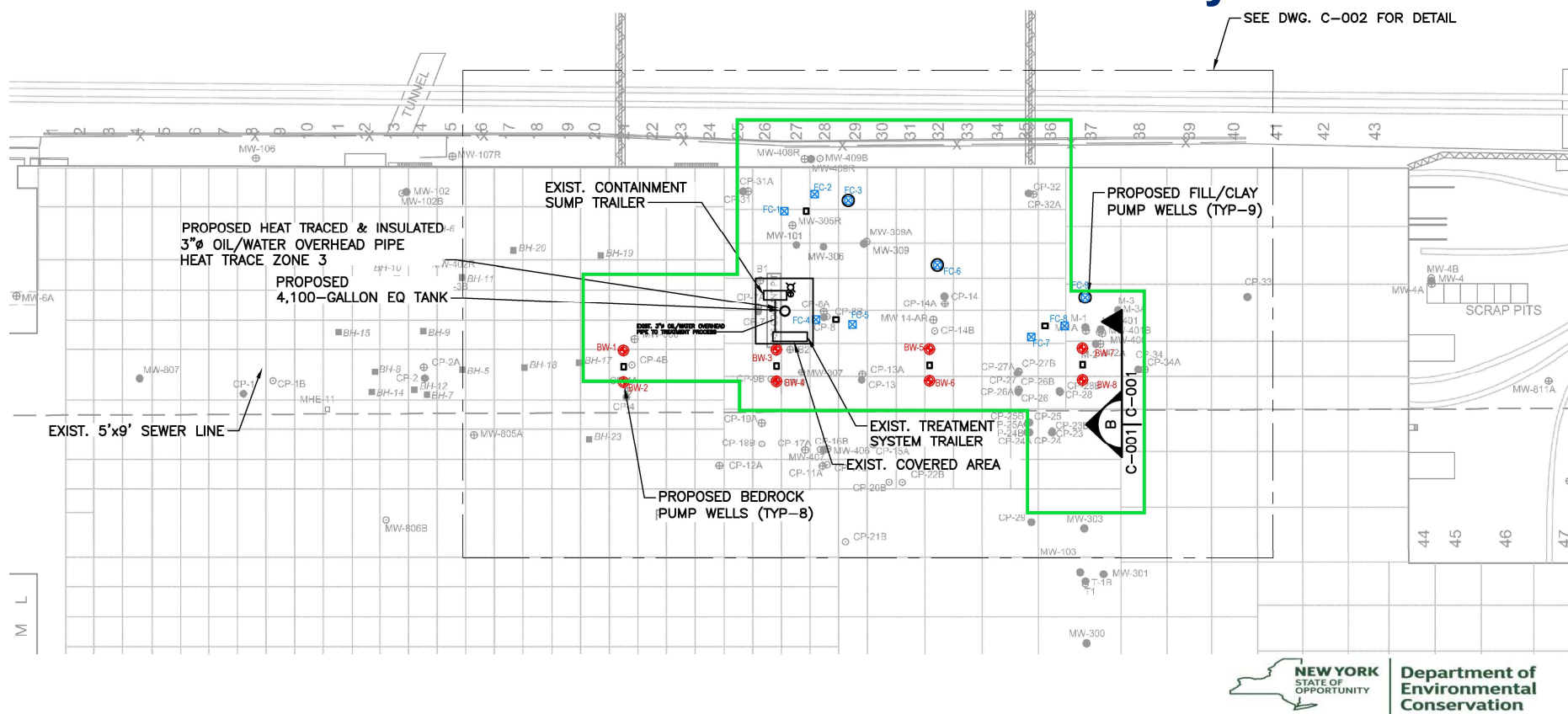


Recent 250 Colorado St. Site Remediation Measures

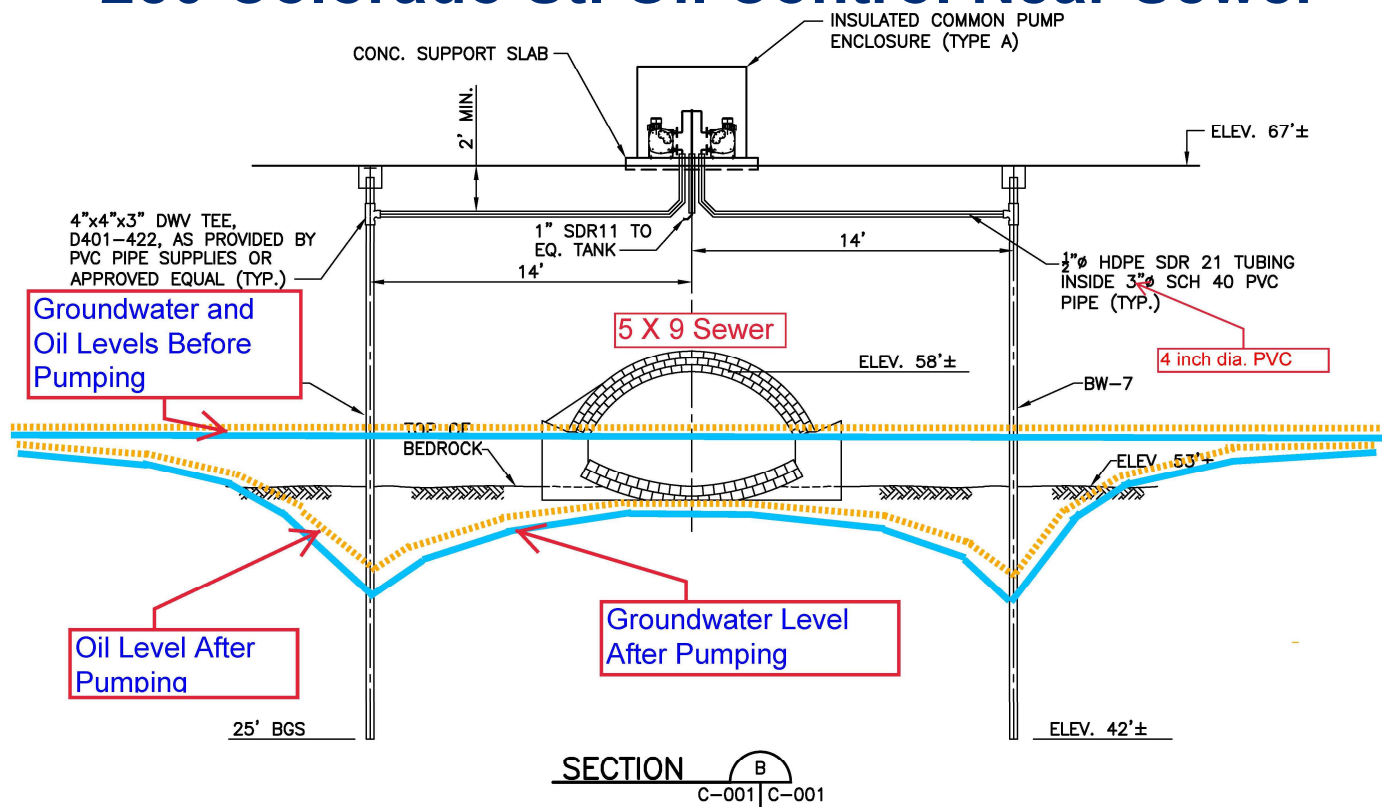
- DEC entered an Agreement with EDP in 2018 to assume site remediation
- DEC implements an evaluation of groundwater conditions and containment design.
- A groundwater containment and oil recovery design was constructed starting late 2018 and completed spring 2019.
- The groundwater system consists of 2 pump extraction systems;
 - ✓ shallow soil system to collect pools of oil in the former Gleason Machine Area, 9 individual wells
 - ✓ bedrock system to draw groundwater and oil away from the “5x9” sewer, 4 well pairs on each side of the sewer to enhance drawdown below the sewer pipe.
- Extracted groundwater/oil is treated by B-26 pit treatment system owned by EDP. Treated water is discharged to the sewer under an industrial discharge permit by BSA. Collected oil is containerized for proper off-site treatment/disposal.
- To date: 1.1M gallons of water treated through the system, 175 gallons of oil collected.
- DEC to evaluate long-term remedial measures at the 250 Colorado St. Site



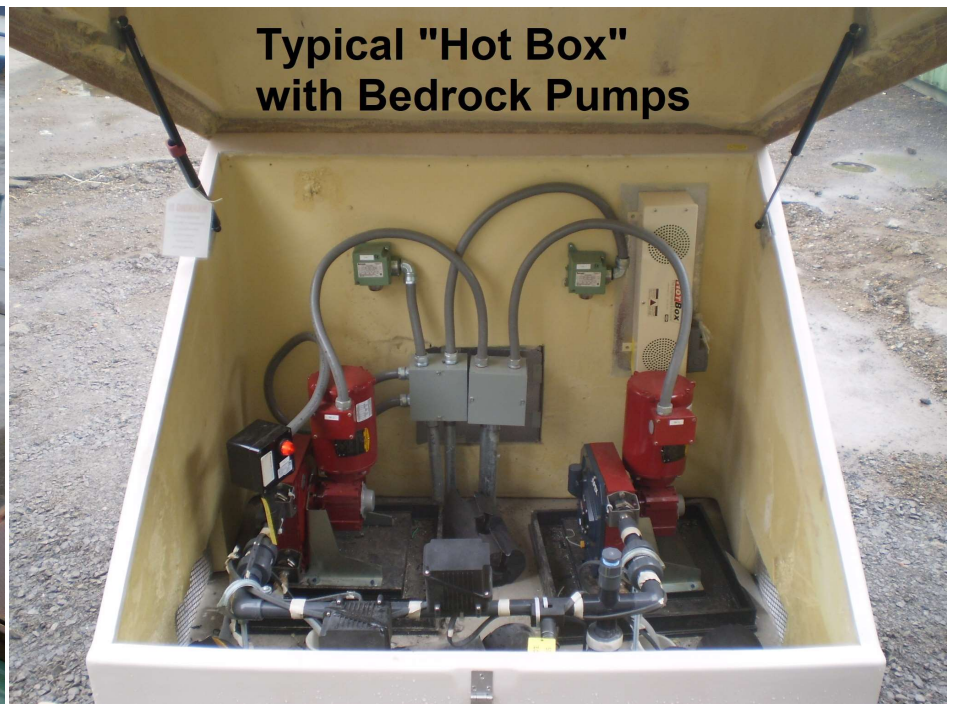
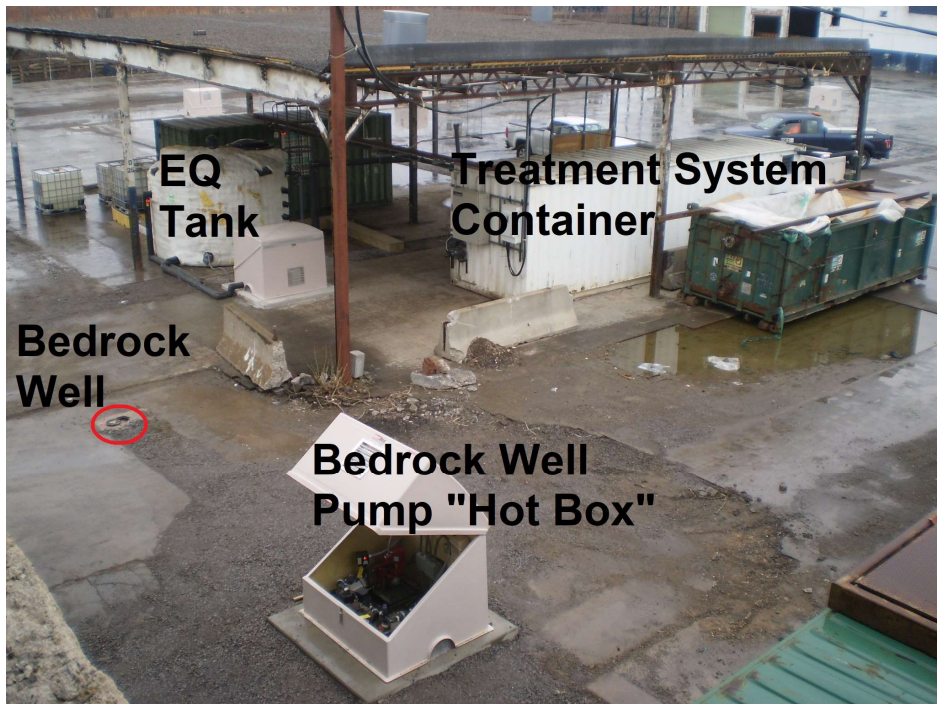
250 Colorado St. Site Groundwater Extraction System Wells



250 Colorado St. Oil Control Near Sewer



250 Colorado St. Site Extraction System Photos



250 Colorado St. Site Extraction System Photos



Preliminary Groundwater Assessment for Design

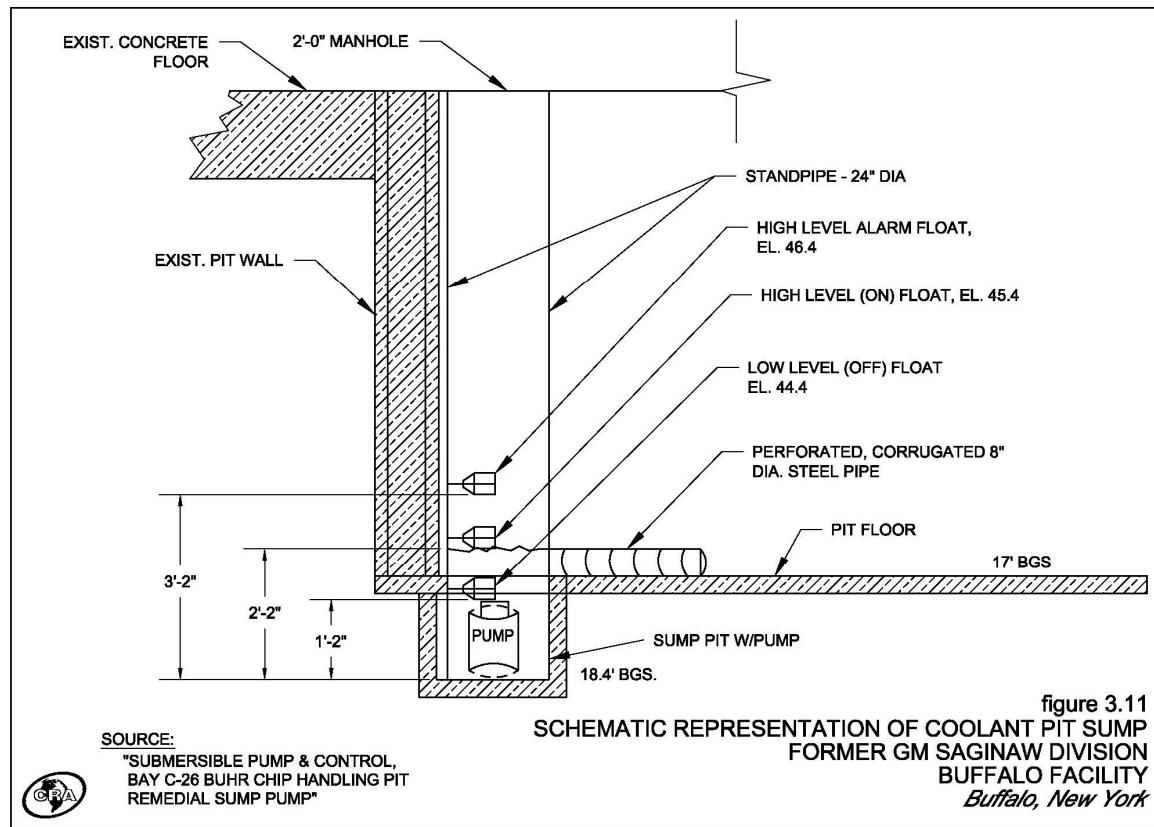
Well bailing to assess locations where oil has accumulated in wells;
note oil in bailer



Collected oil and water is poured into buckets prior to containerizing



B-26 Pit Collection System



12635-03(009)GN-NF044 APR 18/2005

Contact Us

Gene Melnyk

Project Manager

eugene.melnyk@dec.ny.gov

Andrea Caprio

Regional Remediation Engineer

andrea.caprio@dec.ny.gov

Chad Staniszewski

Acting Regional Director

chad.staniszewski@dec.ny.gov

(716) 851-7220



**Department of
Environmental
Conservation**