



Department of  
Environmental  
Conservation

# **1001 East Delavan – 250 Colorado Brownfield Cleanup Program (BCP) and State Superfund Program (SSF) Progress Update**

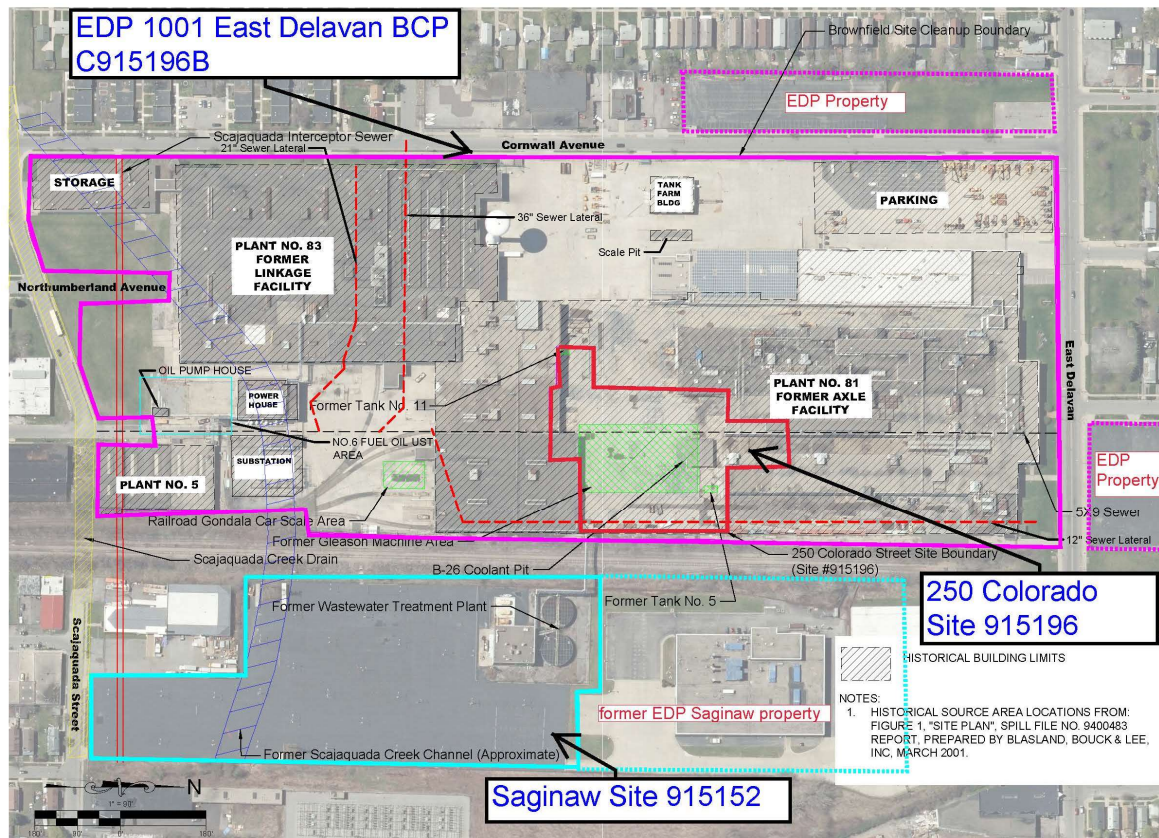
**Division of Environmental Remediation**

April 2023

## DEC Presentation Topics

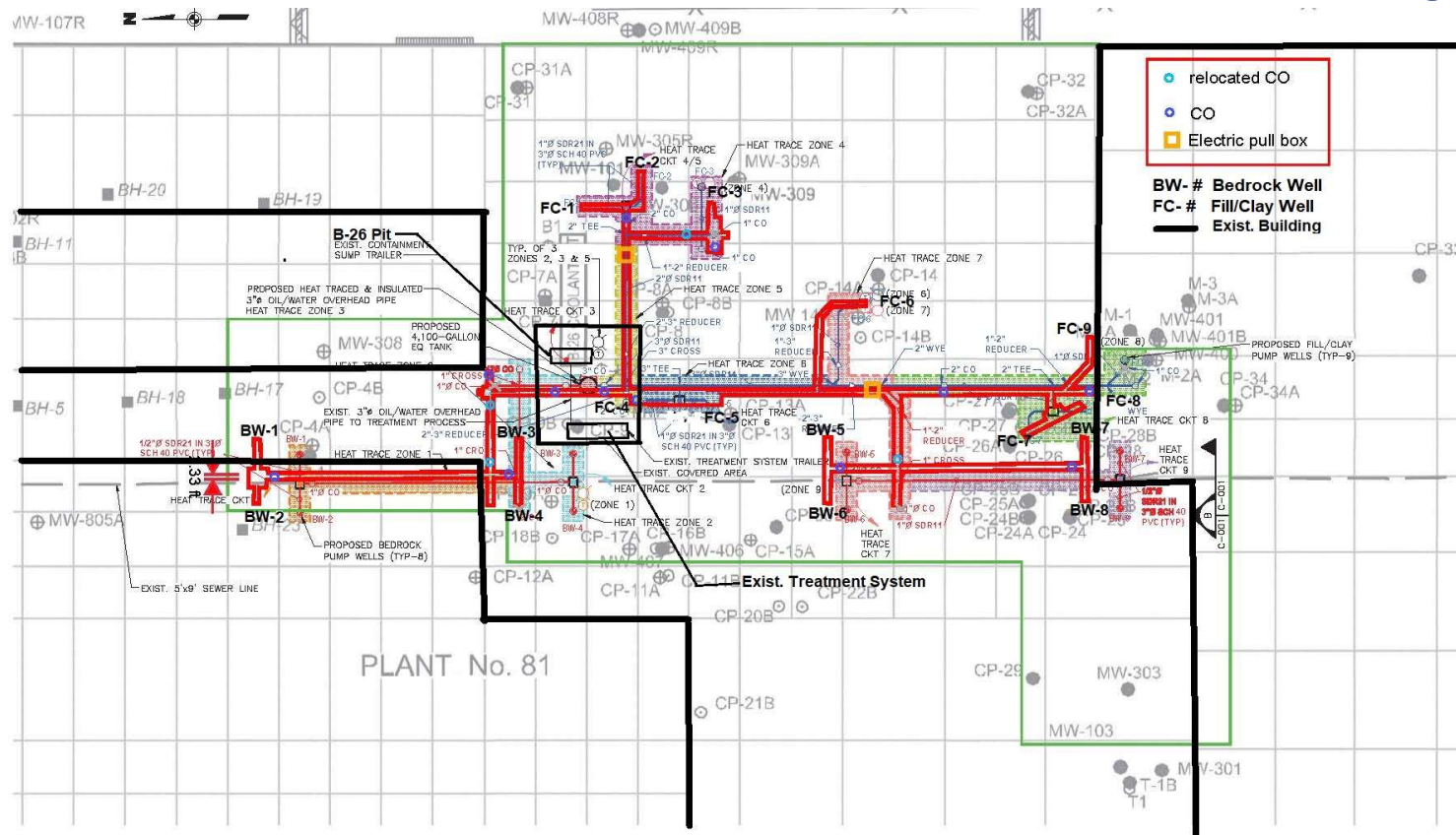
- SSF – BCP Site Boundaries
- Actions and Measures at the SSF Site
- SSF Remedial Measure Progress
- Future Tasks and Activities
- Questions

# Former GM/American Axle Plant Site



## 250 Colorado St. Site Interim Remediation Measures

- DEC evaluated groundwater conditions (2017) and developed a groundwater containment and oil recovery system (2018; installed in 2019).
- The groundwater system consists of 2 separate pump extraction systems;
  - ✓ shallow soil system for pockets of oil in the former Gleason Machine Area
  - ✓ bedrock system to draw groundwater and oil away from the “5x9” sewer
- Extracted groundwater/oil is treated by B-26 pit treatment system owned by EDP. Treated water is discharged to the sewer under an industrial discharge permit by BSA. Collected oil is containerized for proper off-site treatment/disposal.



## 250 Colorado St. Site Remediation Progress

- To date: 1.66M gal. of water has been collected & treated; ~340 gal. of oil collected by DEC system. EDP system has processed 2.5M gallons of water.
- Ongoing system operation and maintenance.
- Bedrock pumps continue to operate with routine maintenance and each pump has been retrofitted with the additional pump control feature.
- Completed a pump electrical system upgrade to integrate additional pump control features and optimize pump maintenance. A pump relocation was completed by EDP as part of building renovation and business expansion.
- Groundwater samples were collected from select wells 2021/2022.



## BCP and SSF – Future Tasks and Activities

### BCP Site

- Additional Investigation and Pre-design activities (July – November 2023)
- DEC reviews and releases revised [BCP Remedial Investigation \(RI\) Report](#) (July 2023)
- DEC review of [BCP Alternative Analysis \(AA\) Report/Remedial Action WP](#) (TBD).
- Fact Sheet and 45-day Public Comment Period for [BCP AA/RAWP](#)
- Additional public meetings at key milestones.

### SSF Site

- DEC will use SSF soil data from oil recovery well installation, recent groundwater data and [BCP RI Report](#) to develop a comprehensive [SSF RI](#) report.
- Use [SSF RI](#) to evaluate long-term remedial measures for the SSF Site.
- DEC to prepare and issue [SSF RI/AA Report](#) late 2024. Integrate [SSF remedial measures](#) with the [BCP site remedial measures](#).
- Future public meetings.

## Where to Find Information

- Search for sites and access site documents using **DECinfo Locator**
- Go to [www.dec.ny.gov](http://www.dec.ny.gov) and click on the link under Popular Topics
- Fact sheets, work plans, reports and more are available for viewing
- Information about many other DEC programs is also available

# Contact Us

**Gene Melnyk**

Project Manager

[eugene.melnyk@dec.ny.gov](mailto:eugene.melnyk@dec.ny.gov)

**Andrea Caprio**

Regional Remediation Engineer

[andrea.caprio@dec.ny.gov](mailto:andrea.caprio@dec.ny.gov)

**Chad Staniszewski**

Assistant Regional Director

[chad.staniszewski@dec.ny.gov](mailto:chad.staniszewski@dec.ny.gov)

**(716) 851-7220**



**Department of  
Environmental  
Conservation**

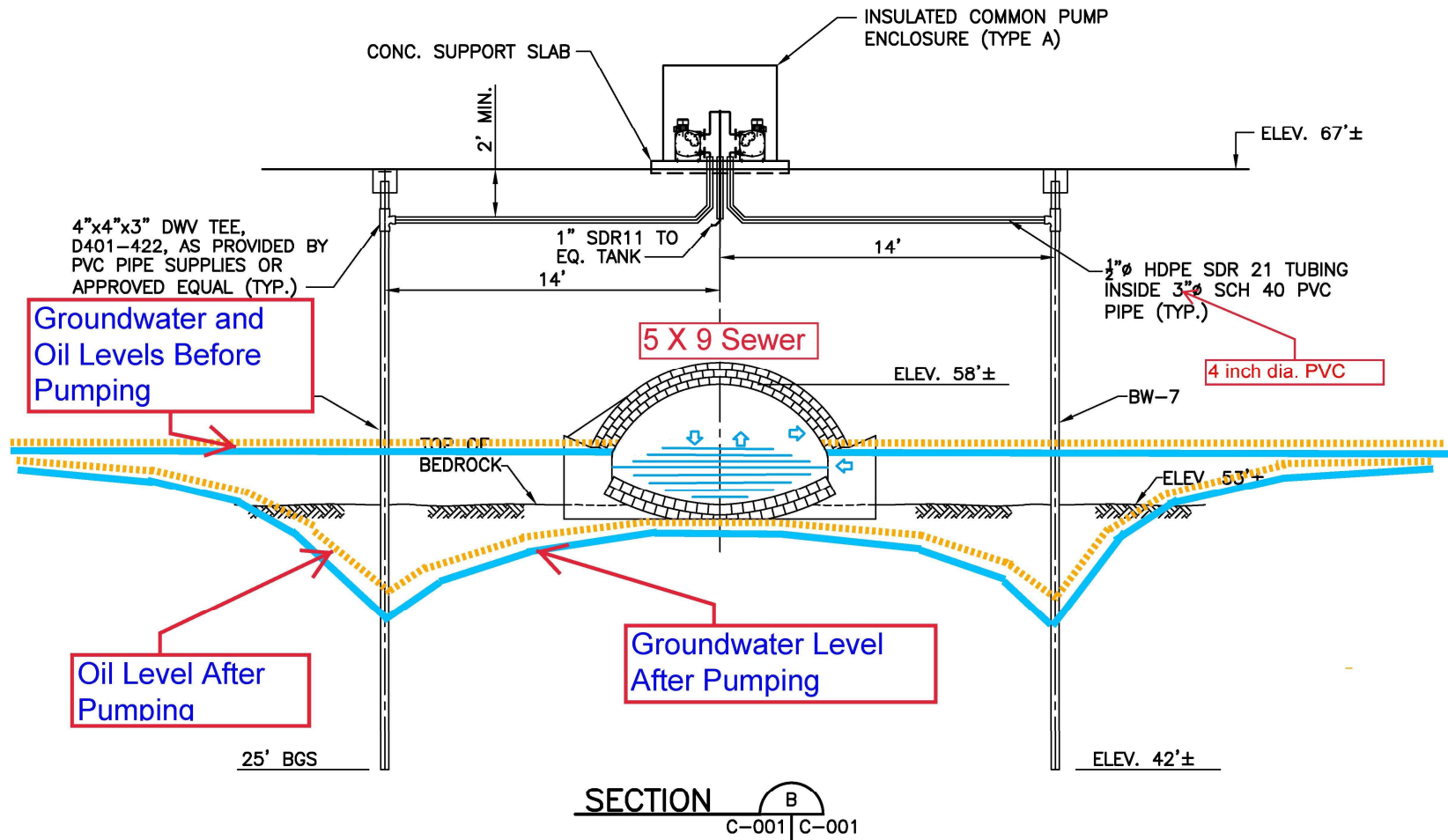
# Questions?



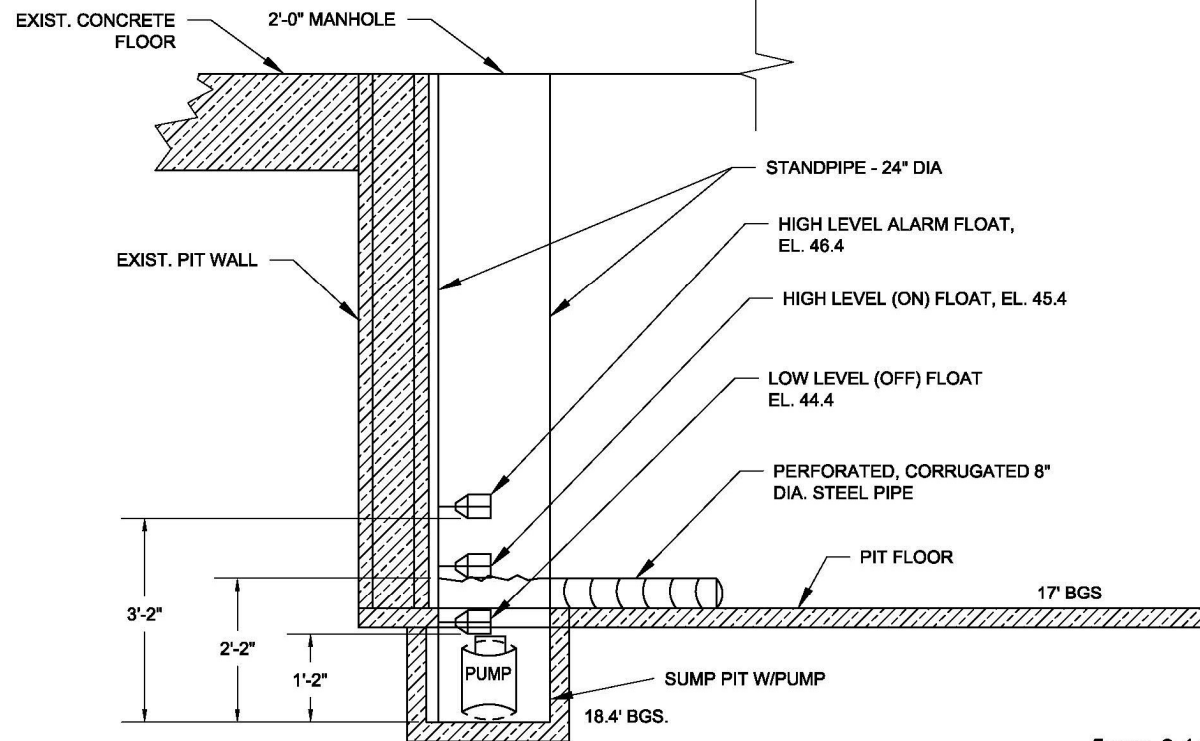
## 1001 East Delavan – 250 Colorado St. SSF and BCP Site Summary

- 1001 East Delavan St. (BCP site) and 250 Colorado St. (SSF site) are portions of the former General Motors/American Axle Plant.
- BCP site covers 32.88 acres and SSF site covers 2.65 acres.
- The Old GM B-26 pit oil collection system is located on the SSF site. The DEC installed oil collection system is also on the SSF site.

# 250 Colorado St. Oil Control Near Sewer



# B-26 Pit Collection System



**SOURCE:**

"SUBMERSIBLE PUMP & CONTROL,  
BAY C-26 BUHR CHIP HANDLING PIT  
REMEDIAL SUMP PUMP"



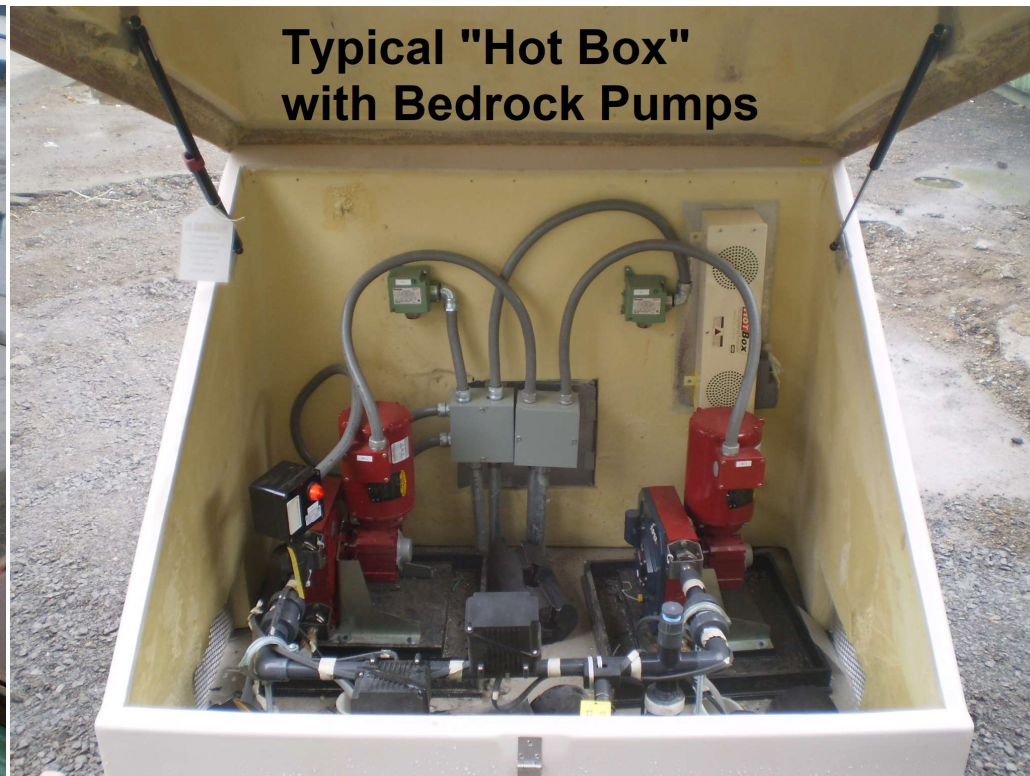
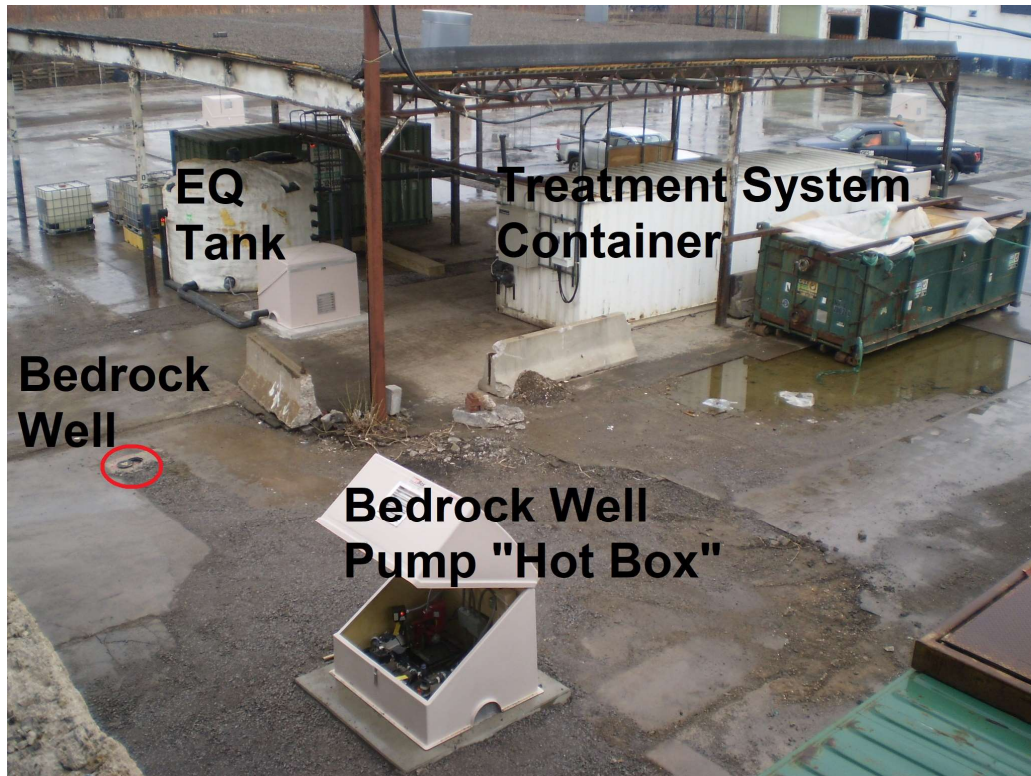
12635-03(009)GN-NF044 APR 18/2005

figure 3.11  
SCHEMATIC REPRESENTATION OF COOLANT PIT SUMP  
FORMER GM SAGINAW DIVISION  
BUFFALO FACILITY  
*Buffalo, New York*



Department of  
Environmental  
Conservation

## 250 Colorado St. Site Extraction System Photos



## 250 Colorado St. Site Extraction System Photos



## Preliminary Groundwater Assessment for Design

Well bailing to assess locations where oil has accumulated in wells;  
note oil in bailer



Collected oil and water is poured into buckets prior to containerizing



# General Remedial Program Steps

## Remedial Investigation Work Plan

What will be done to get a clear picture of the site?

**SSF:** DEC or other responsible party assembles a detailed plan to fully investigate the site. **Fact Sheets issued to announce the work plan and the start of the investigation field work.**

**BCP:** Applicant assembles the work plan. DEC and DOH review and comment. Approval after comments are addressed. **There is a 30 day public comment period for the RIWP. Fact sheet issued to announce review is in progress.**

## General Remedial Program Steps

### Remedial Investigation Report (RIR)

Here is what we learned about the site.

**SSF and BCP:** This report summarizes the results of the remedial investigation. **A Fact Sheet is issued announcing that the report is available.**

# General Remedial Program Steps

## Decision Documents

How are we going to clean this up?

**SSF:** DEC develops a Proposed Remedial Action Plan (PRAP). **There is a 30 day public comment period and a public meeting for the PRAP.** Comments received for the PRAP are considered in development of a Record of Decision (ROD) which outlines the cleanup process.

**BCP:** Applicant analyzes several cleanup methods and chooses one. DEC and DOH review the analysis and a Decision Document is developed outlining the accepted choice. **A Fact Sheet is issued announcing the proposed decision and there is a 45 day public comment period prior to finalizing the Decision Document.**

# General Remedial Program Steps

## Completion

**SSF and BCP:** A Final Engineering Report (FER) detailing the work completed is reviewed by DEC and DOH. After approval of the FER a Certificate of Completion (COC) is issued for BCP sites and some SSF sites. **Fact Sheet are issued to announce the availability of the FER and the issuance of the COC.**

# General Remedial Program Steps

## Site Management

**SSF and BCP:** Removal of all contamination is not always possible. A Site Management Plan (SMP) is put in place for any site that does not reach unrestricted clean-up levels. The SMP details what controls must be put in place and maintained to manage remaining contamination.

Periodic Review Reports (PRRs) are reviewed by DEC on a set schedule to ensure controls remain in place and functional.

## 1001 East Delavan Property SSF and BCP Site Background Information

- 1001 East Delavan St. BCP site and 250 Colorado St. SSF site are portions of the former General Motors/American Axle Plant.
- Old GM began manufacturing automotive parts and assemblies in the 1920s. The plant expanded in size and buildings over the decades. Plant complex occupied 52 acres.
- The former plant also includes the Saginaw site previously remediated under an Order with Old GM. Remediation completed in 2001. Currently in site management by EDP.
- Old GM sold the plant to American Axle in 1994; American Axle shut down operations and sold the plant to East Delavan Properties (EDP) in 2008. Old GM maintained environmental liabilities.
- Old GM implements an interim remedial measure to collect oil at the B-26 pit in 1991. Treatment system upgrades in 2006. EDP upgrades the system in 2011. Operation is ongoing. Maintained by EDP and overhauled the system in 2018.
- Old GM entered an order to investigate and remediate the 2.65 acre 250 Colorado St. Site in 2005. The B-26 pit is located in the 250 Colorado St. Site.
- Old GM declares bankruptcy in 2011. Per bankruptcy, New GM is absolved of environmental liabilities.
- EDP enters agreement with DEC in 2018 and DEC assumes remediation of 250 Colorado St. Site.
- EDP enters the BCP for 1001 East Delavan in 2018 (32.88 acres).

