
PERIODIC REVIEW REPORT

MARCH 11, 2017 TO MARCH 11, 2018

**3 GATES CIRCLE SITE
(BCP SITE No. C915272)**

BUFFALO, NEW YORK

March 2018

0309-014-001

Prepared for:

Montante/Morgan Gates Circle LLC

Prepared By:



Benchmark Environmental Engineering & Science, PLLC
2558 Hamburg Turnpike, Suite 300
Buffalo, NY 14218
(716)856-0599

In association with:



TurnKey Environmental Restoration, LLC
2558 Hamburg Turnpike, Suite 300
Buffalo, NY 14218
(716)856-0635

PERIODIC REVIEW REPORT

March 11, 2017 to March 11, 2018

3 Gates Circle Site (C915272)

Table of Contents

| | | |
|-------|---|----|
| 1.0 | INTRODUCTION | 1 |
| 1.1 | Site Background | 1 |
| 1.2 | Remedial History..... | 2 |
| 1.3 | Compliance | 5 |
| 1.4 | Recommendations | 5 |
| 2.0 | SITE OVERVIEW..... | 6 |
| 3.0 | REMEDY PERFORMANCE | 7 |
| 4.0 | SITE MANAGEMENT PLAN | 8 |
| 4.1 | Institutional and Engineering Control (IC/EC) Plan..... | 8 |
| 4.1.1 | Institutional Controls (ICs)..... | 8 |
| 4.1.2 | Engineering Controls (ECs) | 9 |
| 4.2 | Excavation Work Plan | 9 |
| 4.2.1 | Site Redevelopment Activities..... | 9 |
| 4.2.2 | Exported Materials..... | 10 |
| 4.2.3 | Imported Materials..... | 11 |
| 4.3 | Annual Inspection and Certification Program..... | 11 |
| 4.4 | Operation, Monitoring and Maintenance Plan | 12 |
| 5.0 | CONCLUSIONS AND RECOMMENDATIONS..... | 13 |
| 6.0 | DECLARATION/LIMITATION | 14 |
| 7.0 | REFERENCES | 15 |

PERIODIC REVIEW REPORT

March 11, 2017 to March 11, 2018

3 Gates Circle Site (C915272)

Table of Contents

FIGURES

| | |
|----------|---|
| Figure 1 | Site Location and Vicinity Map |
| Figure 2 | Site Plan |
| Figure 3 | Ongoing Redevelopment Site Cover System Map |

APPENDICIES

| | |
|------------|---|
| Appendix A | Institutional & Engineering Controls Certification Form |
| Appendix B | Export Material Documentation |
| Appendix C | Import Material Documentation |
| Appendix D | Photographic Log |

1.0 INTRODUCTION

Benchmark Environmental Engineering and Science, PLLC (Benchmark), in association with TurnKey Environmental Restoration, LLC (TurnKey) has prepared this Periodic Review Report (PRR) to summarize the post-remedial status of New York State Department of Environmental Conservation (NYSDEC) Brownfield Cleanup Program (BCP) Site No. C915272, located at 3 Gates Circle, in the City of Buffalo, Erie County, New York (see Figure 1).

This PRR has been prepared in accordance with the NYSDEC DER-10 *Technical Guidance for Site Investigation and Remediation* (May 2010; Ref. 1) and the NYSDEC's Institutional and Engineering Controls (IC/EC) Certification Form has been prepared for the Site. This PRR and the associated IC/EC Form (see Appendix A) have been completed for the post-remedial period from March 11, 2017 to March 11, 2018.

1.1 Site Background

Gates Circle Holdings, LLC (GCH) entered into a Brownfield Cleanup Agreement (BCA) with the New York State Department of Environmental Conservation (NYSDEC) on March 19, 2013, amended in October 2014, to investigate and remediate the approximate 6.9-acre Site located at 3 Gates Circle, in the City of Buffalo, County of Erie, New York. BCP site activities were performed in accordance with Brownfield Cleanup Agreement (BCA) Index#C915272-02-13.

The Site is located in the County of Erie, New York and is identified as a portion of Block 4 and Lot 1 on the City of Buffalo Tax Map # 89.79 per Erie County Tax Map records. The Site is situated on an approximately 6.9-acre area bounded by Lafayette Street and Gates Circle to the north, commercial buildings and a City of Buffalo parking ramp to the south, Linwood Avenue to the east, and Delaware Avenue to the west (see Figures 1 and 2).

The Site operated as a commercial/medical facility dating back to the early 1900s and continuing until March 2012. When it closed, the Site consisted of 13 interconnected buildings covering most of the Site. These buildings were primarily used for patient care and hospital administration operations, but included other supporting facilities (i.e., laboratories, research facilities, staff housing, auditorium, and a kitchen). The Power Plant located on the

southeast corner of the property contained boilers, cooling towers, backup generators, and a maintenance area for buildings and grounds equipment. The Power Plant was connected to the main campus via an underground tunnel. The historic backup generator and boiler fuel underground storage tanks (USTs) were located proximate to the former Power Plant.

Prior to the start of redevelopment, five (5) buildings were demolished as well as portions of 3 other buildings. On May 10, 2016, 1.35 acres of the 6.9 acres Site was sold by GCH to Episcopal Church Home and Affiliates Life Care Community, Inc. d/b/a Canterbury Woods (Canterbury Woods, see Figure 2). The 1.35 acre area located in the northwestern portion of the Site was redeveloped as an assisted living facility. The southern portion of the Site is still awaiting redevelopment and five (5) former Millard Fillmore hospital buildings still remaining in the northeastern portion. Two (2) new roadways, the Lancaster Avenue Extension and Lafayette Connector were constructed and are substantially complete (see Figure 2).

During the last post-remedial period, the remaining 5.55 acre parcel owned by GCH was subdivided as follows (see Figure 2) and the ownership transferred to Montante/Morgan Gates Circle LLC (M/MGC). Notice of Transfer of Certificate of Completion was filed with the Erie County Clerk's Office on May 3, 2017 (see Appendix A).

| Address | SBL Number | Acreage | Owner |
|-------------------|-------------|---------|---|
| 1 Gates Circle | 89.79-4-1.1 | 1.35 | Episcopal Church Home and Affiliates Life Care Community, Inc. |
| 1285 Delaware Ave | 89.79-4-1.5 | 1.96 | M/MGC |
| 1291 Delaware Ave | 89.79-4-1.4 | 0.77 | M/MGC |
| 1299 Delaware Ave | 89.79-4-1.6 | 0.3 | M/MGC |
| 865 Lafayette Ave | 89.79-4-1.2 | 0.48 | M/MGC |
| 630 Linwood Ave | 89.79-4-1.3 | 2.04 | M/MGC |

1.2 Remedial History

In August 2008, the two (2) No. 6 fuel oil USTs associated with the Power Plant were removed along with accessible contamination (approximately 962 tons). The presence of impacts beneath the Power Plant foundation necessitated installation of a groundwater remediation system to collect and pretreat perched groundwater impacted by No. 6 fuel oil.

A Remedial Investigation (RI) was performed in October 2014 to characterize the nature and extent of contamination at the Site. The results of the RI are described in detail in the Remedial Investigation/Alternatives Analysis (RI/AA) Report (Ref. 2). Generally, the RI determined the following contaminants of concern (COCs) in Site soil/fill were present: polycyclic aromatic hydrocarbons (PAHs), mercury, and No. 6 fuel oil.

Four (4) areas were identified that would require remedial action, in addition to the remaining fuel oil underneath the former Power Plant, which was made accessible by demolition of the majority of the building.

The RI/AA Report recommended remediation of the five (5) areas, with cover placement recommended as the final remedial measure under a Restricted Residential Track 4 Cleanup approach. Additional requirements included development and adherence to a Site Management Plan (SMP, Ref. 3) and filing of an Environmental Easement to restrict use of the property to restricted residential, commercial, and industrial applications and to place other limitations on post-redevelopment activities.

The following areas were remediated:

- SVOC-impacted soil/fill was removed from three (3) locations identified during RI. Approximately 635 tons of soil were removed from the following three areas.
 - SVOC-1 - was located in the southern central portion of the Site, and completed to a depth of about 3 fbgs. The dimensions were approximately 34 feet (east-west) by 38 feet (north-south)
 - SVOC-2 - was also located in the southern central portion of the Site, and completed to a depth of about 3.5 to 4 fbgs. The dimensions were approximately 28 feet (northwest-southeast) by 40 feet (northeast-southwest).
 - SVOC-3 – was located in the central portion of the Site between the former Medical Services and Kitchen Buildings, and was completed to a depth of about 3.5 to 4.5 fbgs. The building walls of both the Medical Services Building and the Kitchen Building were encountered during the excavation activities on the west and east side of the excavation, respectively. The concrete underground tunnel located between the Medical Services Building and the Kitchen Building was

encountered on the north side of the excavation. The dimensions were approximately 25 feet (north-south) by 50 feet (east-west).

- Mercury-impacted soil/fill was removed from one (1) location in the southern central portion of the Site. It was completed to a depth of about 3 fbg. The dimensions were approximately 40 feet (southwest-northeast) by 40 feet (northwest-southeast). In the southern and central portion of the excavation, black petroleum-like globules and odors were observed. A smaller excavation was completed within the excavation to address some minor petroleum-impacts encountered from 3 fbg to a depth of about 6 fbg. The dimension of this smaller excavation were approximately 30 feet (southwest-northeast) by 20 feet (northwest-southeast) identified during RI. Approximately 191 tons of soil were removed from the excavation area.
- No. 6 fuel oil-impacted (grossly impacted) soil/fill was removed from beneath the former Power Plant building after demolition. Because of the native clay soil present beneath the Power Plant and the high-viscosity of the No. 6 fuel, migration from the former USTs (removed in 2008) was limited to the more porous stone bedding materials. The area in which the No. 6 fuel oil excavation activities occurred was approximately 150 feet (northwest-southeast) by 75 feet (southwest-northeast). The depth of the excavation beneath the Power Plant floor varied from 1 to 5 feet, based on the thickness of the impacted bedding stone. The native clay soil did not appear to have been impacted by the No. 6 fuel oil. Approximately 2,434 tons of grossly impacted stone and soil were removed from this excavation.

After the RI/AA was completed, NYSDEC requested additional soil/fill samples be collected from the greenspace areas of the Site that will be considered a part of the cover system in September 2015. Based on the analytical results of the additional sampling, SVOCs (specifically PAHs) were the only compound class with detections above their respective Restricted Residential Soil Cleanup Objectives (RRSCOs) in five (5) of the six (6), 0 to 6 inch topsoil samples collected. Topsoil excavation activities were completed in five areas around the perimeter of the Site to a depth of 6-inches. Approximately 918 tons of topsoil were removed from the five areas.

Remedial activities completed at the Site were conducted in accordance with the IRM Work Plan (Ref. 4) dated January 29, 2015 and the Decision Document (Ref. 5) dated May 28, 2015 for the 3 Gate Circle Site. The remedial program was successful in achieving the remedial objectives for the Site. An Environmental Easement restricting end use of the Site and enforcing adherence to the SMP was recorded in October 2015. The remedial activities were documented in the Final Engineering Report (FER, Ref. 6) dated November 2015. The Site received its Certificate of Completion on December 10, 2015.

1.3 Compliance

The Site is currently being redeveloped. An assisted living facility was constructed on the northwestern portion of the Site and the two (2) new roadways, the Lancaster Avenue Extension and Lafayette Connector were constructed during the last post-remedial period. Site redevelopment projects involving the disturbance of the cover system and/or subsurface soil/fill are subject to the NYSDEC-approved SMP.

The vacant portions of the Site still awaiting redevelopment and five (5) former Millard Fillmore hospital buildings still remaining are in compliance with the SMP, as the cover system is in place (see Figure 3).

1.4 Recommendations

Redevelopment activities will continue at the Site in the next monitoring period (assumed to be March 11, 2018 through March 11, 2019). We recommend that the redevelopment activities continue to be conducted in accordance with the SMP and that the SMP be updated to include the redevelopment/cover system changes once they are completed.

2.0 SITE OVERVIEW

The remediated property is subject to a comprehensive, site-wide SMP which identifies requirements for monitoring and maintenance of engineering and institutional controls and procedures for post-remedial excavation and related activities.

The 3 Gates Circle Site was remediated under the BCP (as discussed in Section 1.2) and is undergoing redevelopment consistent with the restricted residential use. The area surrounding the Site, as described in Section 1.1, has not changed.

The Site has been subdivided into six (6) parcels, during the last post-remedial period, as discussed in Section 1.1 and shown on Figure 2.

3.0 REMEDY PERFORMANCE

A post-remedial site inspection involving a walk-over of the Site covered by this PRR was performed to visually observe and document the use of the Site for restricted residential, commercial, and/or industrial use, confirm absence of site groundwater use, inspect the cover system integrity, and verify conformance with other requirements under the SMP.

The site inspection completed during this reporting period indicates that the redevelopment activities on the northern 1.35 acre parcel (Canterbury Woods) are complete and M/MGC is planning to continue redevelopment activities on the Site in 2018. The redevelopment activities which involve the implementation of the SMP are being completed with oversight by Benchmark and TurnKey.

Areas of the Site not undergoing redevelopment are in compliance and functioning as intended in accordance with the SMP.

The completed IC/EC Certification forms and site photographs are included in Appendices A and D, respectively.

4.0 SITE MANAGEMENT PLAN

A site-wide SMP was prepared for the Site and approved by the Department in November 2015. Key components of the SMP are described below.

4.1 Institutional and Engineering Control (IC/EC) Plan

Since remaining contaminated soil/fill exists beneath the site, Institutional Controls and Engineering Controls (IC/ECs) are required to protect human health and the environment. The Engineering and Institutional Control Plan describes the procedures for the implementation and management of all IC/ECs at the Site. At the time of the site inspection, a significant portion of the Site is currently under redevelopment. The redevelopment activities which involve the implementation of the SMP are being completed with oversight by Benchmark and TurnKey. Areas of the Site not undergoing redevelopment are compliant with all engineering and institutional control requirements.

4.1.1 Institutional Controls (ICs)

The Site has a series of Institutional Controls in the form of site restrictions. Adherence to these Institutional Controls is required by the Environmental Easement. Site restrictions that apply to the Controlled Property are:

- The property may be used for restricted residential; commercial, industrial uses, subject to local zoning laws;
- All ECs must be operated and maintained as specified in this SMP;
- The use of groundwater underlying the property is prohibited without necessary water quality treatment as determined by the NYSDOH or the Erie Department of Health to render it safe for use as drinking water or for industrial purposes, and the user must first notify and obtain written approval to do so from the Department;
- All future activities on the property that will disturb remaining contaminated material must be conducted in accordance with the SMP;
- Operation, maintenance, monitoring, inspection, and reporting of the soil cover system shall be performed as defined in this SMP;
- Access to the site must be provided to agents, employees or other representatives of the State of New York with reasonable prior notice to the

property owner to assure compliance with the restrictions identified by the Environmental Easement;

- Vegetable gardens and farming on the property are prohibited;

4.1.2 Engineering Controls (ECs)

Engineering controls at the Site include:

- Cover System – Exposure to remaining contamination in soil/fill at the Site is prevented by a final cover system placed over the site. This cover system is comprised of a minimum of 24 inches of clean soil (with demarcation layer), asphalt pavement, concrete-covered sidewalks, concrete basement building slabs, or crushed stone that was placed over the remedial excavation areas and/or to adjust grades at the Site. The cover system must be maintained in compliance with the SMP.

4.2 Excavation Work Plan

An Excavation Work Plan (EWP) was included in the NYSDEC-approved SMP for the Site. The Excavation Work Plan provides guidelines for the management of soil/fill material during intrusive activities. Intrusive activities that are occurring as part of Site redevelopment are being performed in accordance with the EWP with oversight from Benchmark and TurnKey.

Future intrusive work that will penetrate the cover or cap, or encounter or disturb the remaining contamination, including any modifications or repairs to the existing cover system, will be performed in compliance with the EWP.

4.2.1 Site Redevelopment Activities

From March 11, 2017 to March 11, 2018 (e.g., the subject PRR monitoring period), Site redevelopment activities have occurred that have required implementation of the SMP, including cover system alteration, soil/fill material placement beneath the final cover demarcation layer, removal of Site soil/fill for NYSDEC approved off-site reuse and landfill disposal. Specific redevelopment activities occurring during the subject reporting period included:

- Completed construction activities associated with the Canterbury Woods 6-story assisted living facility which began in April 2016. The building has a footprint of approximately 21,480 square feet and provides hardscape cover in the form of concrete foundation and slab.
- In addition to building footprint, 13,635 square feet of hardscape was installed in the form of: six (6) elevated terraces, two (2) parking lots, one (1) parking ramp to the basement parking garage, and sidewalks around the building. This work was completed by August 2017.
- A vegetated soil cover system was placed in the remaining areas of the 1.35 acre Canterbury Woods parcel. The vegetated soil cover system consists of a minimum of 2-foot of Part 375 compliant materials which consist of 6-inches of imported topsoil or 9-inches of washed #2 stone overlying 18-inches to 15-inches of imported 2-inch crushed stone over a demarcation layer (orange mesh) to separate the cover system from existing Site soil/fill.
- M/MGC placed a final “top coat” asphalt layer on the Lafayette Avenue Connector, installed 1,750 square feet of side walk hardscape and placed a 6-inches of imported top soil to complete the final 2-foot cover of green space along the western side of the Lafayette Avenue Connector.

Figure 3 identifies the updated cover system at drawing for the Site. SMP activities were observed by Benchmark and TurnKey personnel to verify conformance with the SMP.

4.2.2 Exported Materials

During the redevelopment activities, materials were generated that were exported off-site in accordance with the SMP. These materials are as follows:

Solid Waste/Impacted Materials: Approximately 306 tons of material was taken to Modern Landfill because the material contained solid waste and/or was impacted. The solid waste and/or impacted materials was generated from site redevelopment activities to establish subgrade in the northern portion of the Site.

Appendix B contains the documentation for the materials that were exported off-site.

4.2.3 Imported Materials

The following aggregate materials and estimated quantities were imported to the Site to facilitate redevelopment construction activities described above:

- 2-inch run of crush stone material from Lafarge North American (Lafarge) quarry in Lockport, NY - approximately 900 tons.
- Clean #2 stone material from Lafarge quarry in Lockport, NY – approximately 130 tons.
- Imported approximately 400 cubic yards of topsoil from Bengert Greenhouses located on 230 French Road, West Seneca NY.

Material Reuse Requests were submitted to NYSDEC for approval prior importing the above referenced material on-Site. Appendix C includes the imported material documentation along with the topsoil Analytical package.

4.3 Annual Inspection and Certification Program

The Annual Inspection and Certification Program outlines requirements for certifying and attesting that the institutional controls and engineering controls employed on the Site are unchanged from the original design and/or previous certification. The Annual Certification includes a Site Inspection and completion of the NYSDEC's IC/EC Certification Form. The Site inspection is intended to verify that the IC/ECs:

- Are in place and effective.
- Are performing as designed.
- That nothing has occurred that would impair the ability of the controls to protect the public health and environment.
- That nothing has occurred that would constitute a violation or failure to comply with any operation and maintenance plan for such controls.
- Access is available to the Site to evaluate continued maintenance of such controls.

Inspection of the Site was conducted by Mr. Christopher Boron of TurnKey Environmental Restoration, LLC on March 7, 2018, a Qualified Environmental Professional (QEP) per 6NYCRR Part 375.12, under supervision of Mr. Thomas H. Forbes, P.E. a licensed and registered NY State Professional Engineer. At the time of the inspection, no construction activities were being performed. The assisted living facility construction project has been completed as well as the Lafayette Connector roadway. The Lancaster Avenue Connector roadway is substantially complete, minus the top coat. Existing cover systems are performing as intended. Additional redevelopment activities are planned for 2018. Upcoming redevelopment projects that disturb the existing cover system are subject to the NYSDEC-approved SMP.

No observable indication of intrusive activities was noted during the Site inspection beyond those described in Section 4.2. The assisted living building which was constructed utilizes the local municipal water supply, and no observable use of groundwater was noted during the Site inspection.

The completed Site Management Periodic Review Report Notice – Institutional and Engineering Controls Certification Form is included in Appendix A. A photographic log of the Site inspections during redevelopment activities are included in Appendix D.

4.4 Operation, Monitoring and Maintenance Plan

The remedy for the Site does not rely on any mechanical systems such as sub-slab depressurization or soil vapor extraction, to protect public health and the environment. Therefore, an Operation and Maintenance Plan is not required.

5.0 CONCLUSIONS AND RECOMMENDATIONS

Conclusions for this reporting period and recommendations for the next reporting period are as follows:

- At the time of the inspection, no construction activities were being performed. The assisted living facility construction project and Lafayette Connector roadway has been completed and associated new cover systems installed. The Lancaster Avenue Connector roadway is substantially complete, minus the top coat. Existing cover systems are performing as intended, therefore the Site is compliant.
- If redevelopment activities involving cover system modification or import/export of soil or stone materials occur in the next reporting period they will be subject to the SMP. In areas subject to redevelopment, Site access will be restricted via construction fencing and will be limited to authorized construction personnel.

The following modifications are recommended for the Site:

- No modifications are recommended at this time.

6.0 DECLARATION/LIMITATION

Benchmark Environmental Engineering and Science, PLLC personnel conducted the annual site inspection for BCP Site No. C915272, located in Buffalo, New York, according to generally accepted practices. This report complied with the scope of work provided to M/MGC by Benchmark Environmental Engineering & Science, PLLC.

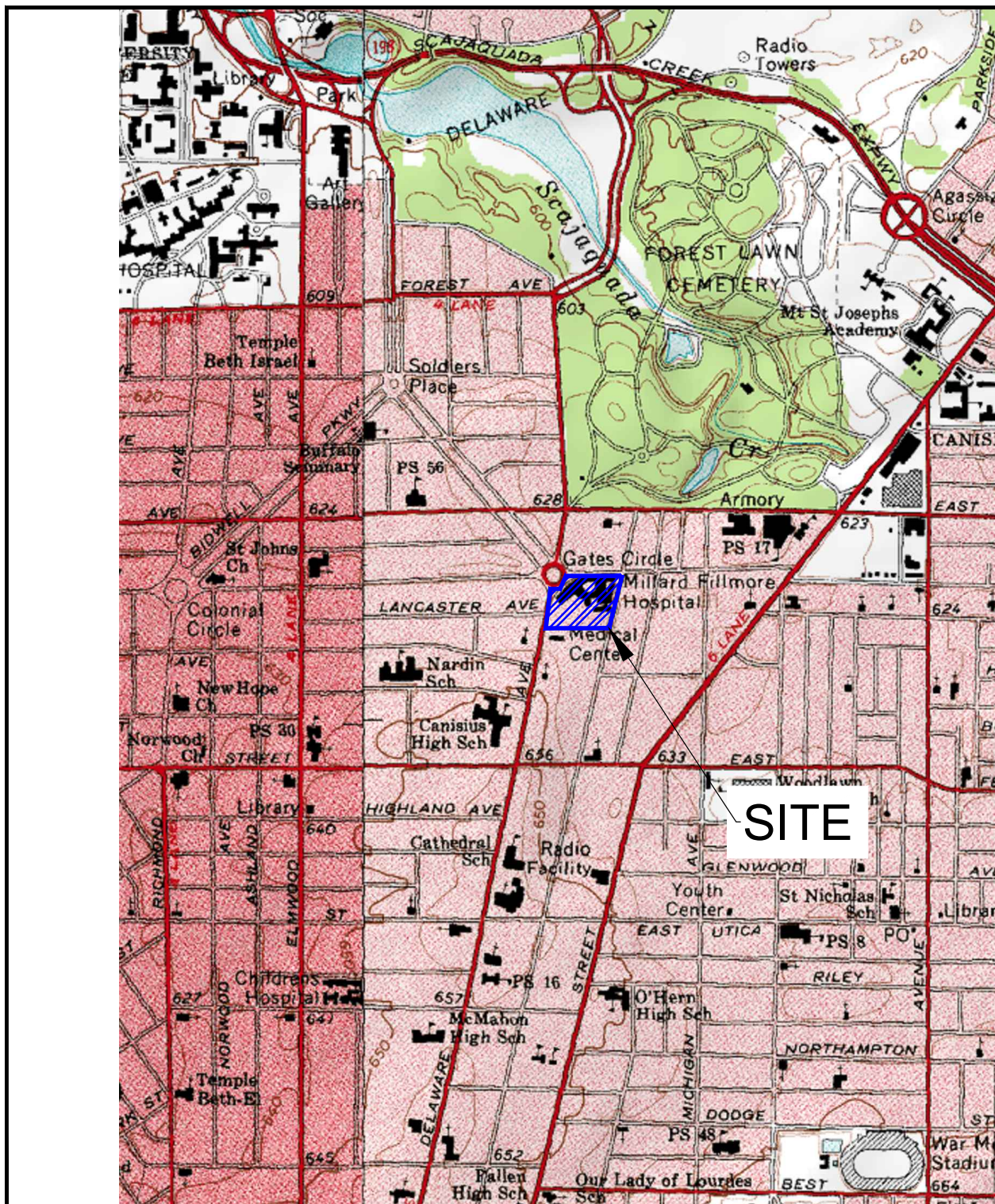
This report has been prepared for the exclusive use of the M/MGC. The contents of this report are limited to information available at the time of the site inspection. The findings herein may be relied upon only at the discretion of M/MGC. Use of or reliance upon this report or its findings by any other person or entity is prohibited without written permission of Benchmark Environmental Engineering and Science, PLLC.

7.0 REFERENCES

1. New York State Department of Environmental Conservation. *DER-10; Technical Guidance for Site Investigation and Remediation*. May 2010.
2. *Remedial Investigation / Alternative Analysis Work Plan, 3 Gates Circle, BCP Site No. C915272, Buffalo, New York*, dated May 2013, Revised October 2013, prepared by Benchmark Environmental Engineering and Science, PLLC.
3. *Site Management Plan, 3 Gates Circle Site, Erie County, Buffalo, New York, NYSDEC Site No. C915272*, dated November 2015, prepared by Benchmark Environmental Engineering and Science, PLLC.
4. *Remedial Investigation Work Plan Addendum, 3 Gates Circle Site (BCP Site No. 915272)*, dated October 7, 2014, prepared by Benchmark Environmental Engineering and Science, PLLC.
5. *Remedial Investigation/Alternative Analysis Report & Decision Document, 3 Gates Circle, Site ID No. C915272, Buffalo, Erie County*, dated May 28, 2015, prepared by New York State Department of Environmental Conservation.
6. *Final Engineering Report, 3 Gates Circle Site, BCP Site No. C915272, Buffalo, New York*, dated November 2015, prepared by Benchmark Environmental Engineering and Science, PLLC.

FIGURES

FIGURE 1



2558 HAMBURG TURNPIKE, SUITE 300, BUFFALO, NY 14218, (716) 856-0599



SITE LOCATION AND VICINITY MAP

PERIODIC REVIEW REPORT

3 GATES CIRCLE SITE
BCP SITE NO. C915272
BUFFALO, NEW YORK

PREPARED FOR

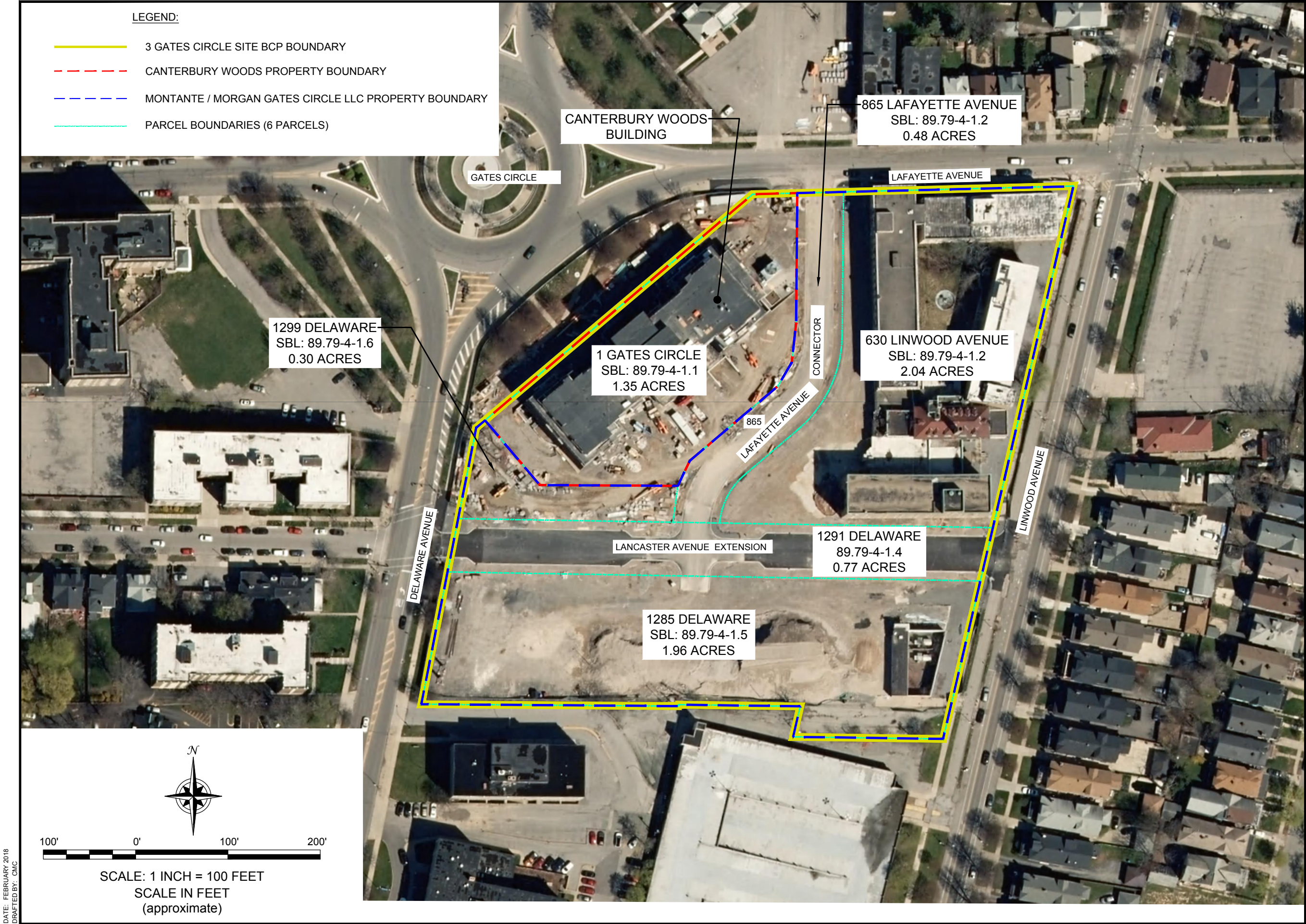
MONTANTE / MORGAN GATES CIRCLE LLC

PROJECT NO.: 0309-014-001

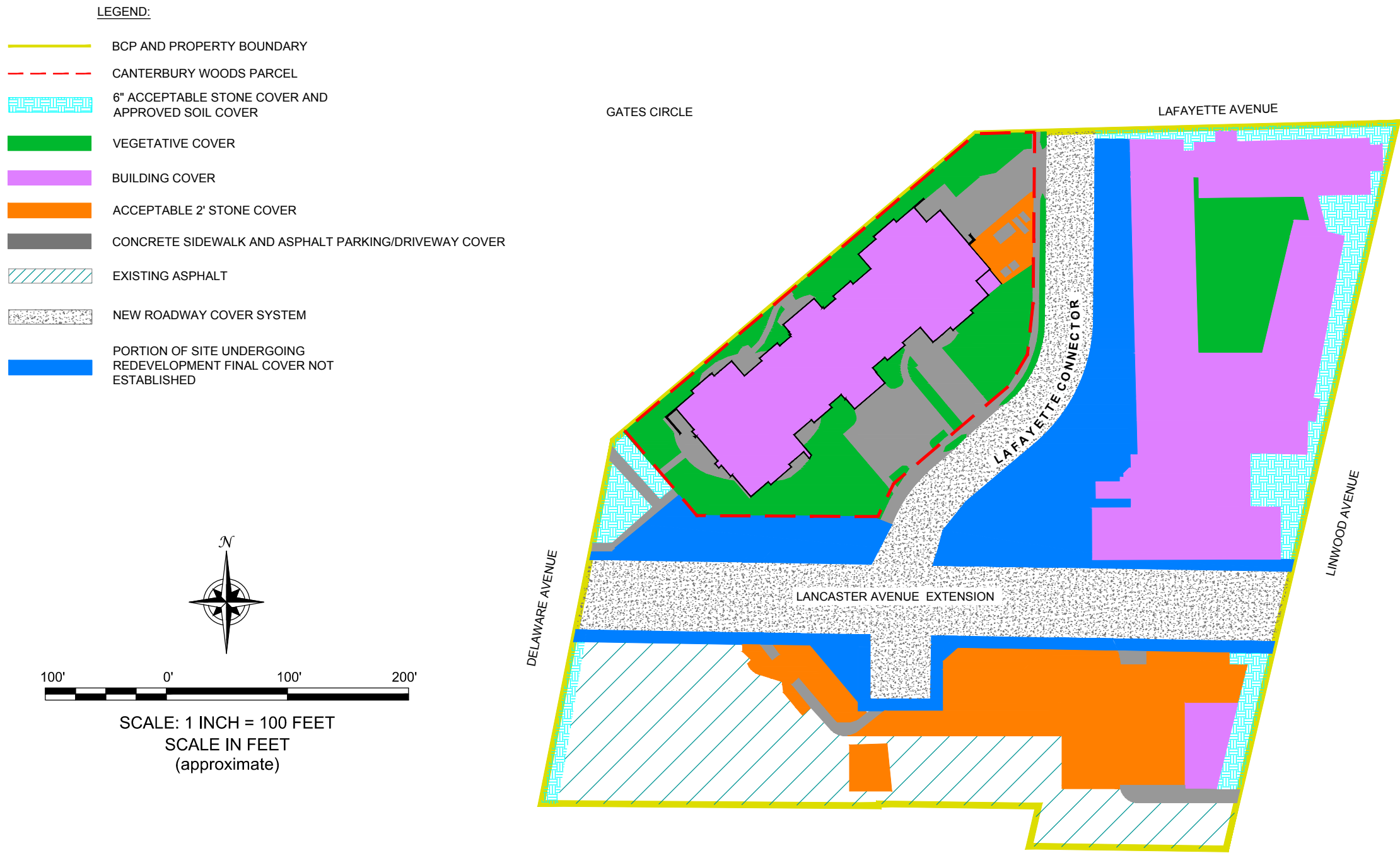
DATE: FEBRUARY 2018

DRAFTED BY: CMC

DISCLAIMER: PROPERTY OF BENCHMARK ENVIRONMENTAL ENGINEERING & SCIENCE, PLLC. & TURNKEY ENVIRONMENTAL RESTORATION, LLC. IMPORTANT: THIS DRAWING PRINT IS LOANED FOR MUTUAL ASSISTANCE AND AS SUCH IS SUBJECT TO RECALL AT ANY TIME. INFORMATION CONTAINED HEREON IS NOT TO BE DISCLOSED OR REPRODUCED IN ANY FORM FOR THE BENEFIT OF PARTIES OTHER THAN NECESSARY SUBCONTRACTORS & SUPPLIERS WITHOUT THE WRITTEN CONSENT OF BENCHMARK ENVIRONMENTAL ENGINEERING & SCIENCE, PLLC & TURNKEY ENVIRONMENTAL RESTORATION, LLC.



| | |
|---|--|
| <div><p>2558 HAMBURG TURNPIKE, SUITE 300, BUFFALO, NY 14218, (716) 856-0599</p></div> | <p>SITE PLAN</p> <p>PERIODIC REVIEW REPORT</p> <p>3 GATES CIRCLE SITE BCP SITE NO. C915272 BUFFALO, NEW YORK</p> <p>PREPARED FOR MONTANTE / MORGAN GATES CIRCLE LLC</p> <p>JOB NO.: 0309-014-001</p> |
| <p>FIGURE 2</p> | |
| <p><small>DISCLAIMER: PROPERTY OF BENCHMARK ENVIRONMENTAL ENGINEERING & SCIENCE, PLLC. & TURNKEY ENVIRONMENTAL RESTORATION, LLC IMPORTANT: THIS DRAWING PRINT IS LOANED FOR MUTUAL ASSISTANCE AND AS SUCH IS SUBJECT TO RECALL AT ANY TIME. INFORMATION CONTAINED HEREON IS NOT TO BE DISCLOSED OR REPRODUCED IN ANY FORM FOR THE BENEFIT OF PARTIES OTHER THAN NECESSARY SUBCONTRACTORS & SUPPLIERS WITHOUT THE WRITTEN CONSENT OF BENCHMARK ENVIRONMENTAL ENGINEERING & SCIENCE, PLLC & TURNKEY ENVIRONMENTAL RESTORATION, LLC.</small></p> | |



ONGOING REDEVELOPMENT SITE COVER SYSTEM

PERIODIC REVIEW REPORT

3 GATES CIRCLE SITE
BCP SITE NO. C915272
BUFFALO, NEW YORK

PREPARED FOR
NATANTE / MORGAN GATES CIRCLE



2558 HAMBURG TURNPIKE, SUITE 300, BUFFALO, NY 14218, (716) 856-0599

JOB NO.: 0309-014-001

DISCLAIMER: PROPERTY OF BENCHMARK ENVIRONMENTAL ENGINEERING & SCIENCE, PLLC. & TURNKEY ENVIRONMENTAL RESTORATION, LLC IMPORTANT: THIS DRAWING PRINT IS LOANED FOR MUTUAL ASSISTANCE AND AS SUCH IS SUBJECT TO RECALL AT ANY TIME. INFORMATION CONTAINED HEREON IS NOT TO BE DISCLOSED OR REPRODUCED IN ANY FORM FOR THE BENEFIT OF PARTIES OTHER THAN NECESSARY SUBCONTRACTORS & SUPPLIERS WITHOUT THE WRITTEN CONSENT OF BENCHMARK ENVIRONMENTAL ENGINEERING & SCIENCE, PLLC & TURNKEY ENVIRONMENTAL RESTORATION, LLC.

APPENDIX A

INSTITUTIONAL & ENGINEERING CONTROLS CERTIFICATION FORMS



Enclosure 2
NEW YORK STATE DEPARTMENT OF ENVIRONMENTAL CONSERVATION
Site Management Periodic Review Report Notice
Institutional and Engineering Controls Certification Form



Site Details

Box 1

Site No. C915272

Site Name 3 Gates Circle Site

Site Address: 3 Gates Circle Zip Code: 14209
City/Town: Buffalo
County: Erie
Site Acreage: 6.9

Reporting Period: March 11, 2017 to March 11, 2018

- | | YES | NO |
|---|-------------------------------------|-------------------------------------|
| 1. Is the information above correct? | <input type="checkbox"/> | <input checked="" type="checkbox"/> |
| If NO, include handwritten above or on a separate sheet. | | |
| 2. Has some or all of the site property been sold, subdivided, merged, or undergone a tax map amendment during this Reporting Period? | <input checked="" type="checkbox"/> | <input type="checkbox"/> |
| 3. Has there been any change of use at the site during this Reporting Period (see 6NYCRR 375-1.11(d))? | <input type="checkbox"/> | <input checked="" type="checkbox"/> |
| 4. Have any federal, state, and/or local permits (e.g., building, discharge) been issued for or at the property during this Reporting Period? | <input type="checkbox"/> | <input checked="" type="checkbox"/> |
| If you answered YES to questions 2 thru 4, include documentation or evidence that documentation has been previously submitted with this certification form. | | |
| 5. Is the site currently undergoing development? | <input checked="" type="checkbox"/> | <input type="checkbox"/> |

Box 2

- | | YES | NO |
|---|-------------------------------------|--------------------------|
| 6. Is the current site use consistent with the use(s) listed below? Restricted-Residential, Commercial, and Industrial | <input checked="" type="checkbox"/> | <input type="checkbox"/> |
| 7. Are all ICs/ECs in place and functioning as designed? | <input checked="" type="checkbox"/> | <input type="checkbox"/> |

**IF THE ANSWER TO EITHER QUESTION 6 OR 7 IS NO, sign and date below and
DO NOT COMPLETE THE REST OF THIS FORM. Otherwise continue.**

A Corrective Measures Work Plan must be submitted along with this form to address these issues.

Signature of Owner, Remedial Party or Designated Representative

Date

Revised Site Address Information for Box 1, Question 1:

| Address | SBL Number | Acreage | Owner |
|-------------------|-------------|---------|---|
| 1 Gates Circle | 89.79-4-1.1 | 1.35 | Episcopal Church Home and Affiliates Life Care Community, Inc. |
| 1285 Delaware Ave | 89.79-4-1.5 | 1.96 | Montante/Morgan Gates Circle LLC |
| 1291 Delaware Ave | 89.79-4-1.4 | 0.77 | Montante/Morgan Gates Circle LLC |
| 1299 Delaware Ave | 89.79-4-1.6 | 0.3 | Montante/Morgan Gates Circle LLC |
| 865 Lafayette Ave | 89.79-4-1.2 | 0.48 | Montante/Morgan Gates Circle LLC |
| 630 Linwood Ave | 89.79-4-1.3 | 2.04 | Montante/Morgan Gates Circle LLC |

Box 2A

8. Has any new information revealed that assumptions made in the Qualitative Exposure Assessment regarding offsite contamination are no longer valid?

YES NO

☐


If you answered YES to question 8, include documentation or evidence that documentation has been previously submitted with this certification form.

9. Are the assumptions in the Qualitative Exposure Assessment still valid?
(The Qualitative Exposure Assessment must be certified every five years)


☐

If you answered NO to question 9, the Periodic Review Report must include an updated Qualitative Exposure Assessment based on the new assumptions.

SITE NO. C915272

Box 3

Description of Institutional Controls

Parcel

Owner

Institutional Control

89.79-4-1

~~Gates Circle Holdings, LLC~~

Montauk Morgan Gates Circle LLC

Ground Water Use Restriction
Soil Management Plan
Landuse Restriction
Site Management Plan
IC/EC Plan

O&M Plan

1. Prohibition of use of groundwater.
2. Land use restriction for Restricted Residential, Commercial or Industrial use.
3. Soil Management or Excavation Work Plan for any future intrusive work.

Box 4

Description of Engineering Controls

Parcel

Engineering Control

89.79-4-1

Cover System

1. Monitoring and maintenance of the cover system.

Periodic Review Report (PRR) Certification Statements

1. I certify by checking "YES" below that:

a) the Periodic Review report and all attachments were prepared under the direction of, and reviewed by, the party making the certification;

b) to the best of my knowledge and belief, the work and conclusions described in this certification are in accordance with the requirements of the site remedial program, and generally accepted engineering practices; and the information presented is accurate and complete.

YES NO



2. If this site has an IC/EC Plan (or equivalent as required in the Decision Document), for each Institutional or Engineering control listed in Boxes 3 and/or 4, I certify by checking "YES" below that all of the following statements are true:

(a) the Institutional Control and/or Engineering Control(s) employed at this site is unchanged since the date that the Control was put in-place, or was last approved by the Department;

(b) nothing has occurred that would impair the ability of such Control, to protect public health and the environment;

(c) access to the site will continue to be provided to the Department, to evaluate the remedy, including access to evaluate the continued maintenance of this Control;

(d) nothing has occurred that would constitute a violation or failure to comply with the Site Management Plan for this Control; and

(e) if a financial assurance mechanism is required by the oversight document for the site, the mechanism remains valid and sufficient for its intended purpose established in the document.

YES NO



**IF THE ANSWER TO QUESTION 2 IS NO, sign and date below and
DO NOT COMPLETE THE REST OF THIS FORM. Otherwise continue.**

A Corrective Measures Work Plan must be submitted along with this form to address these issues.

Signature of Owner, Remedial Party or Designated Representative

Date

IC CERTIFICATIONS
SITE NO. C915272

Box 6

SITE OWNER OR DESIGNATED REPRESENTATIVE SIGNATURE

I certify that all information and statements in Boxes 1, 2, and 3 are true. I understand that a false statement made herein is punishable as a Class "A" misdemeanor, pursuant to Section 210.45 of the Penal Law.

I Christian Campos at 1080 Pittsford Victor Rd
print name Pittsford, NY 14534
print business address

am certifying as Montante / Morgan Gates Circle LLC (Owner or Remedial Party)

for the Site named in the Site Details Section of this form.


Signature of Owner, Remedial Party, or Designated Representative
Rendering Certification

3/23/2018
Date

IC/EC CERTIFICATIONS

Box 7

Qualified Environmental Professional Signature

I certify that all information in Boxes 4 and 5 are true. I understand that a false statement made herein is punishable as a Class "A" misdemeanor, pursuant to Section 210.45 of the Penal Law.

I Thomas H. Forbes, P.E. at Benchmark Environmental Engineering + Science PLLC
print name 2558 Hamburg Turnpike Suite 300, Buffalo, NY 14218
print business address

am certifying as a Qualified Environmental Professional for the Montante / Morgan Gates Circle LLC
(Owner or Remedial Party)

Ran Fan
Signature of Qualified Environmental Professional, for
the Owner or Remedial Party, Rendering Certification



3-23-18
Date

PEGGY A. LAGREE, ACTING ERIE COUNTY CLERK
REF:

DATE: 5/3/2017
TIME: 11:12:21 AM
RECEIPT: 17077454 - DUPLICATE -

PARALEGAL SERVICES OF BUFFALO
ACCOUNT #: 9273

DUPLICATE RECEIPT

ITEM - 01 740
RECD: 5/3/2017 11:16:51 AM
FILE: 2017087582 BK/PG D 11312/6748
GATES CIRCLE HOLDINGS LLC
MONTANTE/MORGAN GATES CIRCLE LLC
Recording Fees 55.50
Subtotal 55.50

| | |
|-------------|---------|
| TOTAL DUE | \$55.50 |
| PAID TOTAL | \$55.50 |
| PAID ESCROW | \$55.50 |

REC BY: Eileen
COUNTY RECORDER

5/3/2017
11:16:51 AM
2017087582 BK/PG D 11312/6748
GATES CIRCLE HOLDINGS LLC
MONTANTE/MORGAN GATES CIRCLE LLC
Recording Fees 55.50
Subtotal 55.50

5/3/2017
11:16:51 AM
2017087582 BK/PG D 11312/6748
GATES CIRCLE HOLDINGS LLC
MONTANTE/MORGAN GATES CIRCLE LLC
Recording Fees 55.50
Subtotal 55.50

FILED**NOTICE OF TRANSFER OF CERTIFICATE OF COMPLETION** MAY 03 2017**Environmental Restoration Program
Pursuant to 6 NYCRR Part 375-1.9(d)****3 Gates Circle, C915272
3 Gates Circle, Buffalo, New York 14209****ERIE COUNTY
CLERK'S OFFICE**

PLEASE TAKE NOTICE, that pursuant to 6 NYCRR 375-1.9(d), Gates Circle Holdings, LLC hereby transfers the Certificate of Completion (the "COC") issued by the Department of Environmental Conservation on December 10, 2015 for the site described below. Such COC was issued upon satisfaction of the Commissioner, following review by the Department of the final engineering report and data submitted pursuant to the State Assistance Contract, as well as any other relevant information regarding the Site, that the remediation requirements set forth in ECL Article 56, title 5 had been or would be achieved in accordance with the time frame, if any, established in the remedial work plan.

PLEASE TAKE NOTICE, that 3 Gates Circle (the "Site") is located at 3 Gates Circle, Buffalo, New York, Erie County. The Site is bearing DEC site number: C915272 and is more fully described on Schedule A attached hereto (the "Site"). The Tax Map Identification Number for site is 89.79-4-1.

PLEASE TAKE NOTICE, that a Notice of Certificate of Completion for the Site was filed in the Erie County Clerk's Office on December 17, 2015 in Liber 11289 Of Deeds at Page 6187.

PLEASE TAKE NOTICE, that on March 28, 2017 Gates Circle Holdings, LLC conveyed title to the Site to Montante/Morgan Gates Circle LLC by Deed recorded in Liber 11293 Of Deeds at Page 9251.

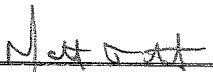
PLEASE TAKE NOTICE, Gates Circle Holdings, LLC hereby transfers the Certificate to the following new property owner(s) as provided for pursuant to 6 NYCRR 375-1.9(d):

Montante/Morgan Gates Circle LLC
1080 Pittsford Victor Road
Pittsford, NY 14534
Ph: 716-876-8899
Representative: Christian Campos, Authorized Member
CCampos@montante.com

PLEASE TAKE FURTHER NOTICE, that if there is an environmental easement for this site, that Montante/Morgan Gates Circle LLC recognizes and agrees to implement the Department-approved Site Management Plan, and any amendments thereto, and to fully comply with all restrictions and affirmative obligations contained therein as well as in the Environmental Easement for the Site.

WHEREFORE, the undersigned have signed this Notice of Transfer of Certificate of Completion as of this 20th of April 2017.

Gates Circle Holdings, LLC



By: Matthew Montante
Title: Manager

Sworn to before me this
20th Of April 2017



Jennifer L. Elmer
Notary Public, State of New York
Registration No. 01EL6005664
Qualified in Niagara County
Commission Expires April 20, 2018

Montante/Morgan Gates Circle LLC


By Christian Campos
Title: Authorized Member

Sworn to before me this
20th of April 2017



Jennifer L. Elmer
Notary Public, State of New York
Registration No. 01EL6005664
Qualified in Niagara County
Commission Expires April 20, 2018

APPENDIX B

MATERIAL EXPORT DOCUMENTATION



1445 Pletcher Road
Model City, NY 14107
(716) 754-8226

Truck: PARISO-13
Customer: 0161620026/ANASTASIA TRUCKING
Carrier: MDS-001/MODERN DISPOSAL

Truck Type: TA

Generator: 0250310002/MODERN DISPOSAL ROI
Service Site: 0452670001 CANTERBURY WOODS
Comment:

Profile: M16-2917/CANTERBURY WOODS

Ticket: 1002639068
Date: 5/2/2017
Time: 11:45:02 - 11:45:42
Scale

Gross: 78360 POUIn Scale INBOUN
Tare: 27600 POU P.T.
Net: 50760 POU

WO: 0001532800

| Origin | Materials & Services | Quantity | Unit |
|----------------------|-----------------------|----------|------|
| 142201/Williamsville | DC DEC Approved Waste | 25.38 | TON |

Driver: _____

Weighmaster: Kevin Vendetta



1445 Pletcher Road
Model City, NY 14107
(716) 754-8226



Ticket: 1002640841
Date: 5/9/2017
Time: 12:01:13 - 12:01:58
Scale

Gross: 75520 POU In Scale INBOUND
Tare: 27180 POU P.T.
Net: 48340 POU

Truck: PARISO-37
Customer: 0250310002/MODERN DISPOSAL ROI
Carrier: PARI-002/Pariso Hauling

Truck Type: TA
Route: PARISO/PARISO
Profile: M16-2917/CANTERBURY WOODS -

WO: 0001536302

Generator: 0250310002/MODERN DISPOSAL ROI
Service Site: 0452670001 CANTERBURY WOODS
Comment:

| Origin | Materials & Services | Quantity | Unit |
|----------------------|-----------------------|----------|------|
| 142201/Williamsville | DC DEC Approved Waste | 24.17 | TON |

Driver: _____

Weighmaster: Kevin Vendetta



1445 Pletcher Road
Model City, NY 14107
(716) 754-8226

Truck: PARISO-105
Customer: 0250310002/MODERN DISPOSAL ROI
Carrier: PARI-004/PARISO, B TRANSPORT

Truck Type: TA

Route: BROKER/SUB OUT VARIOUS BRC
Profile: M16-2917/CANTERBURY WOODS -

WO: 0001536300

Generator: 0250310002/MODERN DISPOSAL ROI
Service Site: 0452670001 CANTERBURY WOODS
Comment:

Ticket: 1002640796
Date: 5/9/2017
Time: 10:55:04 - 10:56:00
Scale

Gross: 72880 POU In Scale INBOUND
Tare: 26780 POU P.T.
Net: 46100 POU

| Origin | Materials & Services | Quantity | Unit |
|----------------------|-----------------------|----------|------|
| 142201/Williamsville | DC DEC Approved Waste | 23.05 | TON |

Driver:

BLL #105

Weighmaster: Kevin Vendetta



1445 Pletcher Road
Model City, NY 14107
(716) 754-8226

Truck: PARISO-105
Customer: 0250310002/MODERN DISPOSAL ROI
Carrier: PARI-004/PARISO, B TRANSPORT

Truck Type: TA

Route: BROKER/SUB OUT VARIOUS BRC
Profile: M16-2917/CANTERBURY WOODS -

WO: 0001536304

Generator: 0250310002/MODERN DISPOSAL ROI
Service Site: 0452670001 CANTERBURY WOODS
Comment:

Ticket: 1002640902
Date: 5/9/2017
Time: 13:35:12 - 13:35:49
Scale

Gross: 69120 POU In Scale INBOUND
Tare: 26780 POU P.T.
Net: 42340 POU

| Origin | Materials & Services | Quantity | Unit |
|----------------------|-----------------------|----------|------|
| 142201/Williamsville | DC DEC Approved Waste | 21.17 | TON |

Driver:

BLL 105

Weighmaster: Kevin Vendetta

JOB COPY



1445 Pletcher Road
Model City, NY 14107
(716) 754-8226



Ticket: 1002640849
Date: 5/9/2017
Time: 12:10:57 - 12:11:21
Scale

Gross: 72880 POU In Scale INBOUND
Tare: 27180 POU P.T.
Net: 45700 POU

Truck: PARISO-38
Customer: 0250310002/MODERN DISPOSAL ROI
Carrier: PARI-002/Pariso Hauling

Truck Type: TA

WO: 0001536303

Profile: M16-2917/CANTERBURY WOODS -

Generator: 0250310002/MODERN DISPOSAL ROI
Service Site: 0452670001 CANTERBURY WOODS
Comment:

| Origin | Materials & Services | Quantity | Unit |
|----------------------|-----------------------|----------|------|
| 142201/Williamsville | DC DEC Approved Waste | 22.85 | TON |

Driver: _____

Weighmaster: Kevin Vendetta

Weighmaster: Kevin Vendetta



1445 Pletcher Road
Model City, NY 14107
(716) 754-8226

Truck: PARISO-41
Customer: 0250310002/MODERN DISPOSAL ROI
Carrier: PARI-002/Pariso Hauling

Truck Type: TA

Profile: M16-2917/CANTERBURY WOODS -

Generator: 0250310002/MODERN DISPOSAL ROI
Service Site: 0452670001 CANTERBURY WOODS
Comment:



Ticket: 1002640853
Date: 5/9/2017
Time: 11:54:30 - 12:17:16
Scale

Gross: 73260 POU In Scale INBOUN
Tare: 27140 POU Out Scale OUTBOI
Net: 46120 POU

WO: 0001536301

| Origin | Materials & Services | Quantity | Unit |
|----------------------|-----------------------|----------|------|
| 142201/Williamsville | DC DEC Approved Waste | 23.06 | TON |

Driver: _____

Weighmaster: Kevin Vendetta



1445 Pletcher Road
Model City, NY 14107
(716) 754-8226

Truck: PARISO-41
Customer: 0250310002/MODERN DISPOSAL ROI
Carrier: PARI-002/Pariso Hauling

Truck Type: TA

Profile: M16-2917/CANTERBURY WOODS -

Generator: 0250310002/MODERN DISPOSAL ROI
Service Site: 0452670001 CANTERBURY WOODS
Comment:



Ticket: 1002640926
Date: 5/9/2017
Time: 14:14:18 - 14:14:35
Scale

Gross: 71020 POU In Scale INBOUN
Tare: 27140 POU P.T.
Net: 43880 POU

WO: 0001536305

| Origin | Materials & Services | Quantity | Unit |
|----------------------|-----------------------|----------|------|
| 142201/Williamsville | DC DEC Approved Waste | 21.94 | TON |

Driver: _____

Weighmaster: Kevin Vendetta



1445 Pletcher Road
Model City, NY 14107
(716) 754-8226



Ticket: 1002662613

Date: 7/25/2017

Time: 09:42:12 - 09:43:38

Scale

Gross: 73960 POUIn Scale INBOUN

Tare: 26880 POU P.T.

Net: 47080 POU

Truck: PARISO-233

Customer: 0250310002/MODERN DISPOSAL ROI

Carrier: PARI-001/PARISO INC, CARMEN

Truck Type: TA

Route: BROKER/SUB OUT VARIOUS BRC

WO: 0001581837

Profile: M16-2917/CANTERBURY WOODS

Generator: 0250310002/MODERN DISPOSAL ROI

Service Site: 0452670001 CANTERBURY WOODS

Comment:

| Origin | Materials & Services | Quantity | Unit |
|----------------------|-----------------------|----------|------|
| 142201/Williamsville | DC DEC Approved Waste | 23.54 | TON |

Driver: _____

Weighmaster: Nathan Duncan



1445 Pletcher Road
Model City, NY 14107
(716) 754-8226



Ticket: 1002662747
Date: 7/25/2017
Time: 12:32:36 - 12:33:02

Truck: PARISO-233
Customer: 0250310002/MODERN DISPOSAL ROI
Carrier: PARI-001/PARISO INC, CARMEN

Scale
Gross: 78680 POUIn Scale INBOUN
Tare: 26880 POU P.T.
Net: 51800 POU

Truck Type: TA
Route: BROKER/SUB OUT VARIOUS BRC WO: 0001581838
Profile: M16-2917/CANTERBURY WOODS

Generator: 0250310002/MODERN DISPOSAL ROI
Service Site: 0452670001 CANTERBURY WOODS
Comment:

| Origin | Materials & Services | Quantity | Unit |
|----------------------|-----------------------|----------|------|
| 142201/Williamsville | DC DEC Approved Waste | 25.90 | TON |

Driver: _____

Weighmaster: Nathan Duncan

APPENDIX C

IMPORT MATERIAL DOCUMENTATION

Lafarge LOCKPORT QUARRY 716-439-1300
3301 400 Hinman Rd

Scale: 1 Weighmaster: Kimberly S

RECEIVED:

Ticket: 128360349 3/24/2017 12:27:02PM

Customer: 55965 PARISO LOGISTICS INC

Order: 400368208 Gates Circle

P.O.: Pickup

Dispatch 0

Truck: PAR238 License 74692JX

Hauler: 4000000 CUSTOMER VEHICLE

Zone: ZONE0 Max.GWW 74,375

Product: 8515 CS,WASHED 2

| | Pounds | Alt |
|--------|---------|---------|
| Gross: | 71440 | 32405 |
| Tare: | 27320 * | 12392 * |
| Net: | 44120 | 20012 |

Quantity: 22.06 Ton

Today: 22.06 Ton

Loads: 1 * Predetermined Tare

| Cash Sale | Price | Amount |
|-----------|-------|--------|
|-----------|-------|--------|

Material:

Other:

Tax:

Total:

PARISO LOGISTICS, INC.

3649 River Road

Tonawanda, NY 14150

OFFICE: 875-6168

JOB#

FAX: 875-4121

| | | |
|---|--|--|
| CUSTOMER | | DATE |
| LOAD LOCATION | | DUMP LOCATION |
| HIRED TRUCK COMPANY | | JOB START |
| TRUCK # & DRIVER | | JOB FINISH |
| <input type="checkbox"/> DUMP TRUCK SERVICE | <input type="checkbox"/> SLINGER SERVICE | TRAVEL TIME |
| <input type="checkbox"/> DUMP TRAILER SERVICE | <input type="checkbox"/> OTHER | <input type="checkbox"/> LUNCH <input type="checkbox"/> NO LUNCH |
| MATERIAL HAULED | | TOTAL |

| LD # | TICKET # | WEIGHT | WAIT TIME ON JOB IN - OUT | REMARKS: SPECIFY: ON "HOLD" @ PLANT, TOLLS, DUMP LOCATIONS, ETC. |
|------|----------|--------|------------------------------|---|
| 128 | 360349 | 22.06 | - | |
| 2 | | | - | |
| 3 | | | - | |
| 4 | | | - | |
| 5 | | | - | |
| 6 | | | - | |
| 7 | | | - | |
| 8 | | | - | |
| 9 | | | - | |
| 10 | | | - | |
| 11 | | | - | |
| 12 | | | - | |
| 13 | | | - | |
| 14 | | | - | |
| 15 | | | - | |

OUR RESPONSIBILITY ENDS AT THE CURB

CUSTOMER'S SIGNATURE:

JOB COPY

Lafarge LOCKPORT QUARRY 716-439-1300
 3301 400 Hinman Rd
 Scale: 2 Weighmaster: Kimberly S
 RECEIVED: _____
 Ticket: 128360587 3/28/2017 1:33:19PM
 Customer: 55965 PARISO LOGISTICS INC
 Order: 400368208 Gates Circle

P.O.: _____ Pickup
 Dispatch 0
 Truck: PLI17 License 79722M
 Hauler: 4000000 CUSTOMER VEHICLE
 Zone: ZONE0 Max GVW 73,750
 Product: 600829 304.122" ROC

| | Pounds | Alt |
|-----------|-----------|---------|
| Gross: | 70480 | 31969 |
| Tare: | 27960 * | 12682 * |
| Net: | 42520 | 19287 |
| Quantity: | 21.26 Ton | |
| Today: | 84.03 Ton | |
| Loads: | 4 | |

* Predetermined Tare

| Cash Sale | Price | Amount |
|-----------|-------|--------|
| Material: | | |
| Other: | | |
| Tax: | | |
| Total: | | |

PARISO LOGISTICS, INC.

3649 River Road

Tonawanda, NY 14150

OFFICE: 875-6168

JOB#

FAX: 875-4121

D.D.S. CUSTOMER *03/28/17* DATE
Lafarge Lockport LOAD LOCATION *Gates Circle* DUMP LOCATION
 HIRED TRUCK COMPANY
 TRUCK # & DRIVER *17 Jack Kohn*
☒ DUMP TRUCK SERVICE ☐ SLINGER SERVICE
☐ DUMP TRAILER SERVICE ☐ OTHER
 MATERIAL HAULED *2" CM*
 JOB START
 JOB FINISH
 TRAVEL TIME
☐ LUNCH ☐ NO LUNCH
 TOTAL

| LD # | TICKET # | WEIGHT | WAIT TIME ON JOB IN - OUT | REMARKS SPECIFY: ON "HOLD" @ PLANT, TOLLS, DUMP LOCATIONS, ETC. |
|------|----------|--------|------------------------------|--|
| 1 | 60587 | 21.26 | - | |
| 2 | | | - | |
| 3 | | | - | |
| 4 | | | - | |
| 5 | | | - | |
| 6 | | | - | |
| 7 | | | - | |
| 8 | | | - | |
| 9 | | | - | |
| 10 | | | - | |
| 11 | | | - | |
| 12 | | | - | |
| 13 | | | - | |
| 14 | | | - | |
| 15 | | | - | |

OUR RESPONSIBILITY ENDS AT THE CURB

CUSTOMER'S SIGNATURE: *[Signature]*

JOB COPY

Lafarge 3301 LOCKPORT QUARRY 400 Hinman Rd 716-439-1300
 Scale: 2 Weighmaster: Kimberly S
 RECEIVED: Ticket: 128360561 3/28/2017 11:40:01AM

Customer: 55965 PARISO LOGISTICS INC
 Order: 400368208 Gates Circle

P.O.: Pickup
 Dispatch 0 License 77485JF
 Truck: PAR206
 Hauler: 4000000 CUSTOMER VEHICLE Max GVW 74,271
 Zone: ZONE0
 Product: 600829 304.122" ROC

| | Pounds | Alt |
|-----------|-----------|----------------------|
| Gross: | 72080 | 32695 |
| Tare: | 32040 * | 14533 * |
| Net: | 40040 | 18162 |
| Quantity: | 20.02 Ton | |
| Today: | 20.02 Ton | |
| Loads: | 1 | * Predetermined Tare |

Cash Sale Price Amount
 Material:
 Other:
 Tax:
 Total:

Lafarge 3301 LOCKPORT QUARRY 400 Hinman Rd 716-439-1300
 Scale: 2 Weighmaster: Kimberly S
 RECEIVED: Ticket: 128360585 3/28/2017 1:28:54PM

Customer: 55965 PARISO LOGISTICS INC
 Order: 400368208 Gates Circle

P.O.: Pickup
 Dispatch 0 License 77485JF
 Truck: PAR206
 Hauler: 4000000 CUSTOMER VEHICLE Max GVW 74,271
 Zone: ZONE0
 Product: 600829 304.122" ROC

| | Pounds | Alt |
|-----------|-----------|----------------------|
| Gross: | 72700 | 32976 |
| Tare: | 32040 * | 14533 * |
| Net: | 40660 | 18443 |
| Quantity: | 20.33 Ton | |
| Today: | 62.77 Ton | |
| Loads: | 3 | * Predetermined Tare |

Cash Sale Price Amount
 Material:
 Other:
 Tax:
 Total:

CUSTOMER'S SIGNATURE:

OUR RESPONSIBILITY ENDS AT THE CURB

| LD # | TICKET # | WEIGHT | WAIT TIME ON JOB IN - OUT | REMARKS SPECIFY TOLLS, DUMP LO |
|------|----------|--------|---------------------------|--------------------------------|
| 1 | 300561 | 20.02 | | |
| 2 | 300585 | 20.33 | | |
| 3 | | | | |
| 4 | | | | |
| 5 | | | | |
| 6 | | | | |
| 7 | | | | |
| 8 | | | | |
| 9 | | | | |
| 10 | | | | |
| 11 | | | | |
| 12 | | | | |
| 13 | | | | |
| 14 | | | | |
| 15 | | | | |

HIRED TRUCK COMPANY PARISO
 TRUCK # & DRIVER 200 211
☒ DUMP TRUCK SERVICE ☐ SLINGER SERVICE
☐ DUMP TRAILER SERVICE ☐ OTHER
 MATERIAL HAULED 20.02
 TOTAL

OFFICE: 875-6168
 3649 River Road
 Tonawanda, NY 14150
 PARISO LOGISTICS, INC.
 L 321

JOB COPY

Ticket: 128361967 4/7/2017 2:03:37PM

Customer: 55965 PARISO LOGISTICS INC
Order: 400368208 Gates Circle

P.O.: Pickup
Dispatch 0
Truck: PLI17 License 79722M
Hauler: 4000000 CUSTOMER VEHICLE
Zone: ZONE0 Max GVW 73,750
Product: 600829 304.12 2" ROC
Pounds Alt
Gross: 71620 32486
Tare: 27880 * 12646 *
Net: 43740 19840
Quantity: 21.87 Ton
Today: 213.51 Ton
Loads: 10 * Predetermined Tare

Cash Sale Price Amount
Material:
Other:
Tax:
Total:

Ticket: 128361942 4/7/2017 12:06:20PM

Customer: 55965 PARISO LOGISTICS INC
Order: 400368208 Gates Circle

P.O.: Pickup
Dispatch 0
Truck: PLI17 License 79722M
Hauler: 4000000 CUSTOMER VEHICLE
Zone: ZONE0 Max GVW 73,750
Product: 600829 304.12 2" ROC
Pounds Alt
Gross: 72040 32677
Tare: 27880 * 12646 *
Net: 44160 20031
Quantity: 22.08 Ton
Today: 127.15 Ton
Loads: 6 * Predetermined Tare

Cash Sale Price Amount
Material:
Other:
Tax:
Total:

PARISO LOGISTICS, INC.

3649 River Road
Tonawanda, NY 14150

OFFICE: 875-6168

DATE 04/07/17

FAX: 875-4121

DUMP LOCATION

Gates Circle

CUSTOMER

Pariso Logistics

LOAD LOCATION

21" C/L

HIRED TRUCK COMPANY

TRUCK # & DRIVER

☐ DUMP TRUCK SERVICE

☐ DUMP TRAILER SERVICE

☐ SLINGER SERVICE

☐ OTHER

MATERIAL HAULED

JOB START

JOB FINISH

TRAVEL TIME

☐ LUNCH

☐ NO LUNCH

TOTAL

REMARKS SPECIFY: ON "HOLD" @ PLANT,
TOLLS, DUMP LOCATIONS, ETC.

WAIT TIME ON JOB
IN - OUT

WEIGHT

TICKET #

ID #

1 61942 22.08

2 61967 21.87

3

4

5

6

7

8

9

10

11

12

13

14

15

OUR RESPONSIBILITY ENDS AT THE CURB

CUSTOMER'S SIGNATURE: *[Signature]*

JOB COPY

Lafarge LOCKPORT QUARRY 716-439-1300
 3301 400 Hinman Rd
 Scale: 1 Weighmaster: Kimberly S
 RECEIVED:
 Ticket: 128361968 4/7/2017 2:03:49PM

Customer: 55965 PARISO LOGISTICS INC
 Order: 400368208 Gates Circle

P.O.: Pickup
 Dispatch 0

Truck: PLI12 License 47649MI
 Hauler: 4000000 CUSTOMER VEHICLE
 Zone: ZONE0 Max GVW 68,000

Product: 600829 304.122" ROC

| | Pounds | Alt |
|--------|---------|---------|
| Gross: | 65760 | 29828 |
| Tare: | 25640 * | 11630 * |
| Net: | 40120 | 18198 |

Quantity: 20.06 Ton
 Today: 233.57 Ton
 Loads: 11

* Predetermined Tare

| Cash Sale | Price | Amount |
|---------------|-------|--------|
| Material: | | |
| Other: | | |
| Tax: | | |
| Total: | | |

PARISO LOGISTICS, INC.

JOB#

3649 River Road

Tonawanda, NY 14150

OFFICE: 875-6168

FAX: 875-4121

| | | |
|---|--|---|
| CUSTOMER <i>D. B. S.</i> | | DATE <i>4/7/17</i> |
| LOAD LOCATION <i>Dock</i> | DUMP LOCATION <i>Gates Circle</i> | |
| HIRED TRUCK COMPANY | | JOB START |
| TRUCK # & DRIVER <i>Q-120</i> | | JOB FINISH |
| <input type="checkbox"/> DUMP TRUCK SERVICE | <input type="checkbox"/> SLINGER SERVICE | TRAVEL TIME |
| <input type="checkbox"/> DUMP TRAILER SERVICE | <input type="checkbox"/> OTHER | <input type="checkbox"/> LUNCH <input checked="" type="checkbox"/> NO LUNCH |
| MATERIAL HAULED <i>25K</i> | | TOTAL |

| LD # | TICKET # | WEIGHT | WAIT TIME ON JOB IN - OUT | REMARKS SPECIFY: ON "HOLD" @ PLANT, TOLLS, DUMP LOCATIONS, ETC. |
|------|----------|--------|------------------------------|--|
| 1 | 61889 | 20.31 | - | |
| 2 | 61804 | 19.64 | - | |
| 3 | 61923 | 19.95 | - | |
| 4 | 61913 | 20.80 | 18:55-1:10 | |
| 5 | 61968 | 20.06 | - | |
| 6 | | | - | |
| 7 | | | - | |
| 8 | | | - | |
| 9 | | | - | |
| 10 | | | - | |
| 11 | | | - | |
| 12 | | | - | |
| 13 | | | - | |
| 14 | | | - | |
| 15 | | | - | |

OUR RESPONSIBILITY ENDS AT THE CURB

CUSTOMER'S SIGNATURE: *M. Kary*

JOB COPY

Ticket: 128361943

Customer: 55965 PARISO LOGISTICS INC
Order: 400368208 Gates Circle

P.O.: Pickup

Dispatch 0

Truck: PL112 License 47649MI
Hauler: 4000000 CUSTOMER VEHICLE
Zone: ZONE0 Max GVW 68,000

Product: 600829 304.12 2" ROC

| | Pounds | Alt |
|--------|---------|---------|
| Gross: | 66040 | 29955 |
| Tare: | 25640 * | 11630 * |
| Net: | 40400 | 18325 |

Quantity: 20.20 Ton

Today: 147.35 Ton

Loads: 7 * Predetermined Tare

| Cash Sale | Price | Amount |
|-----------|-------|--------|
|-----------|-------|--------|

Material:

Other:

Tax:

Total:

Lafarge LOCKPORT QUARRY 716-439-1300
3301 400 Hinman Rd

Scale: 1 Weighmaster: Kimberly S

RECEIVED:

Ticket: 128361904 4/7/2017 8:44:57AM

Customer: 55965 PARISO LOGISTICS INC
Order: 400368208 Gates Circle

P.O.: Pickup

Dispatch 0

Truck: PL112 License 47649MI
Hauler: 4000000 CUSTOMER VEHICLE
Zone: ZONE0 Max GVW 68,000

Product: 600829 304.12 2" ROC

| | Pounds | Alt |
|--------|---------|---------|
| Gross: | 65020 | 29493 |
| Tare: | 25640 * | 11630 * |
| Net: | 39380 | 17862 |

Quantity: 19.69 Ton

Today: 40.03 Ton

Loads: 2 * Predetermined Tare

| Cash Sale | Price | Amount |
|-----------|-------|--------|
|-----------|-------|--------|

Material:

Other:

Tax:

Total:

Ticket: 128361923

4/7/2017 10:30:59AM

Customer: 55965 PARISO LOGISTICS INC
Order: 400368208 Gates Circle

P.O.: Pickup

Dispatch 0

Truck: PL112 License 47649MI
Hauler: 4000000 CUSTOMER VEHICLE
Zone: ZONE0 Max GVW 68,000

Product: 600829 304.12 2" ROC

| | Pounds | Alt |
|--------|---------|---------|
| Gross: | 65540 | 29728 |
| Tare: | 25640 * | 11630 * |
| Net: | 39900 | 18098 |

Quantity: 19.95 Ton

Today: 59.98 Ton

Loads: 3 * Predetermined Tare

| Cash Sale | Price | Amount |
|-----------|-------|--------|
|-----------|-------|--------|

Material:

Other:

Tax:

Total:

Lafarge LOCKPORT QUARRY 716-439-1300
3301 400 Hinman Rd

Scale: 1 Weighmaster: Kimberly S

RECEIVED:

Ticket: 128361889 4/7/2017 6:51:21AM

Customer: 55965 PARISO LOGISTICS INC
Order: 400368208 Gates Circle

P.O.: Pickup

Dispatch 0

Truck: PL112 License 47649MI
Hauler: 4000000 CUSTOMER VEHICLE
Zone: ZONE0 Max GVW 68,000

Product: 600829 304.12 2" ROC

| | Pounds | Alt |
|--------|---------|---------|
| Gross: | 66320 | 30082 |
| Tare: | 25640 * | 11630 * |
| Net: | 40680 | 18452 |

Quantity: 20.34 Ton

Today: 20.34 Ton

Loads: 1 * Predetermined Tare

| Cash Sale | Price | Amount |
|-----------|-------|--------|
|-----------|-------|--------|

Material:

Other:

Tax:

Total:

L 326451

PARISO LOGISTICS, INC.

JOB#

3649 River Road

Tonawanda, NY 14150

OFFICE: 875-6168

FAX: 875-4121

CUSTOMER: DD5 DATE: 4/19/17

LOAD LOCATION: Lockport DUMP LOCATION: Gates Circle

HIRED TRUCK COMPANY: _____

TRUCK # & DRIVER: 13/Osman

☐ DUMP TRUCK SERVICE ☐ SLINGER SERVICE

☐ DUMP TRAILER SERVICE ☐ OTHER _____

MATERIAL HAULED: Rock

JOB START: 7:00

JOB FINISH: _____

TRAVEL TIME: _____

☐ LUNCH ☒ NO LUNCH

TOTAL: _____

| LD # | TICKET # | WEIGHT | WAIT TIME ON JOB IN - OUT | REMARKS SPECIFY: ON "HOLD" @ PLANT, TOLLS, DUMP LOCATIONS, ETC. |
|------|-----------|--------|------------------------------|--|
| 1 | 128364519 | 22.43 | 8:20 - 8:25 | @ Quarry 7:00 - 7:25 |
| 2 | 128364518 | 22.56 | 10:10 - 10:20 | 9:10 - 9:25 |
| 3 | | | | 11:00 |
| 4 | 128364716 | 22.08 | 1:40 - 1:45 | 12:50 - 1:55 |
| 5 | | | | |
| 6 | | | | |
| 7 | | | | |
| 8 | | | | |
| 9 | | | | |
| 10 | | | | |
| 11 | | | | |
| 12 | | | | |
| 13 | | | | |
| 14 | | | | |
| 15 | | | | |

OUR RESPONSIBILITY ENDS AT THE CURB

CUSTOMER'S SIGNATURE: [Signature]

JOB COPY

Lafarge LOCKPORT QUARRY 716-439-1300
3301 400 Hinman Rd

Scale: 1 Weighmaster: Kimberly S

RECEIVED: _____

Ticket: 128364519 4/19/2017 7:26:13AM

Customer: 55965 PARISO LOGISTICS INC

Order: 400368208 Gates Circle

P.O.: _____ Pickup

Dispatch 0

Truck: PLI13 License 47650MI

Hauler: 4000000 CUSTOMER VEHICLE

Zone: ZONE0 Max GVW 73,750

Product: 600829 304.12 2" ROC

| | Pounds | Alt |
|-----------|-----------|---------|
| Gross: | 72700 | 32976 |
| Tare: | 27840 * | 12628 * |
| Net: | 44860 | 20348 |
| Quantity: | 22.43 Ton | |
| Today: | 22.43 Ton | |
| Loads: | 1 | |

* Predetermined Tare

| Cash Sale | Price | Amount |
|-----------|-------|--------|
| Material: | | |
| Other: | | |
| Tax: | | |
| Total: | | |

L- 326451

Lafarge LOCKPORT QUARRY 716-439-1300
3301 400 Hinman Rd

Scale: 2 Weighmaster: Kimberly S

RECEIVED:

Ticket: 128364608 4/19/2017 9:29:12AM

Customer: 55965 PARISO LOGISTICS INC
Order: 400368208 Gates Circle

P.O.: Pickup
Dispatch 0
Truck: PLI13 License 47650MI
Hauler: 4000000 CUSTOMER VEHICLE
Zone: ZONE0 Max GVW 73,750

Product: 600829 304.122" ROC
Pounds Alt
Gross: 72960 33094
Tare: 27840 * 12628 *
Net: 45120 20466
Quantity: 22.56 Ton
Today: 44.99 Ton
Loads: 2 * Predetermined Tare

Cash Sale Price Amount
Material:
Other:
Tax:
Total:

Lafarge LOCKPORT QUARRY 716-439-1300
3301 400 Hinman Rd

Scale: 1 Weighmaster: Kimberly S

RECEIVED:

Ticket: 128364776 4/19/2017 12:56:31PM

Customer: 55965 PARISO LOGISTICS INC
Order: 400368208 Gates Circle

P.O.: Pickup
Dispatch 0
Truck: PLI13 License 47650MI
Hauler: 4000000 CUSTOMER VEHICLE
Zone: ZONE0 Max GVW 73,750

Product: 600829 304.122" ROC
Pounds Alt
Gross: 72000 32659
Tare: 27840 * 12628 *
Net: 44160 20031
Quantity: 22.08 Ton
Today: 67.07 Ton
Loads: 3 * Predetermined Tare

Cash Sale Price Amount
Material:
Other:
Tax:
Total:

716-439-1300

L 326452

PARISO LOGISTICS, INC.

JOB#

3649 River Road

Tonawanda, NY 14150

OFFICE: 875-6168

FAX: 875-4121

CUSTOMER: Lockport DATE: 4/19/17

LOAD LOCATION: Lockport DUMP LOCATION: Quarry

HIRED TRUCK COMPANY: _____ JOB START: 11:00

TRUCK # & DRIVER: 13105 JOB FINISH: _____

☐ DUMP TRUCK SERVICE ☐ SLINGER SERVICE TRAVEL TIME: _____

☐ DUMP TRAILER SERVICE ☐ OTHER: _____ ☐ LUNCH ☒ NO LUNCH

MATERIAL HAULED: clean TOTAL: _____

| LD # | TICKET # | WEIGHT | WAIT TIME ON JOB IN - OUT | REMARKS SPECIFY: ON "HOLD" @ PLANT, TOLLS, DUMP LOCATIONS, ETC. |
|------|-----------|--------|------------------------------|--|
| 1 | 1363-8271 | 22.09 | 11:55 - 01:10 | @ Quarry 11:00 - 11:10 |
| 2 | | | | |
| 3 | | | | |
| 4 | | | | |
| 5 | | | | |
| 6 | | | | |
| 7 | | | | |
| 8 | | | | |
| 9 | | | | |
| 10 | | | | |
| 11 | | | | |
| 12 | | | | |
| 13 | | | | |
| 14 | | | | |
| 15 | | | | |

OUR RESPONSIBILITY ENDS AT THE CURB

CUSTOMER'S SIGNATURE: [Signature]

JOB COPY

Lafarge LOCKPORT QUARRY 716-439-1300
3301 400 Hinman Rd

Scale: 1 Weighmaster: Kimberly S

RECEIVED: _____

Ticket: 128364691

4/19/2017 11:14:05AM

Customer: 55965 PARISO LOGISTICS INC

Order: 400368208 Gates Circle

P.O.: _____ Pickup

Dispatch 0 License 47650MI

Truck: PL113

Hauler: 4000000 CUSTOMER VEHICLE Max GW 73,750

Zone: ZONE0

Product: 8516 CS,#2 STONE

| | Pounds | Alt |
|-----------|-----------|---------|
| Gross: | 72020 | 32668 |
| Tare: | 27840 * | 12628 * |
| Net: | 44180 | 20040 |
| Quantity: | 22.09 Ton | |
| Today: | 22.09 Ton | |
| Loads: | 1 | |

* Predetermined Tare

| Cash Sale | Price | Amount |
|-----------|-------|--------|
| Material: | | |
| Other: | | |
| Tax: | | |
| Total: | | |

L 325949

PARISO LOGISTICS, INC.

JOB#

3649 River Road

Tonawanda, NY 14150

OFFICE: 875-6168

FAX: 875-4121

CUSTOMER

DATE

LOAD LOCATION

DUMP LOCATION

HIRED TRUCK COMPANY

JOB START

TRUCK # & DRIVER

JOB FINISH

☐ DUMP TRUCK SERVICE☐ SLINGER SERVICE

TRAVEL TIME

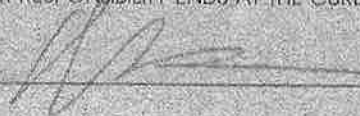
☐ DUMP TRAILER SERVICE☐ OTHER☐ LUNCH☒ NO LUNCH

MATERIAL HAULED

TOTAL

| ID # | TICKET # | WEIGHT | WAIT TIME ON JOB IN - OUT | REMARKS SPECIFY: ON "HOLD" @ PLANT, TOLLS, DUMP LOCATIONS, ETC. |
|------|----------|--------|------------------------------|--|
| 1 | 88364313 | 22.07 | 1:35 - 1:45 | @ Quarry 12.10 - 12.45 |
| 2 | | | | |
| 3 | | | | |
| 4 | | | | |
| 5 | | | | |
| 6 | | | | |
| 7 | | | | |
| 8 | | | | |
| 9 | | | | |
| 10 | | | | |
| 11 | | | | |
| 12 | | | | |
| 13 | | | | |
| 14 | | | | |
| 15 | | | | |

OUR RESPONSIBILITY ENDS AT THE CURB

CUSTOMER'S SIGNATURE: 

JOB COPY

Lafarge

LOCKPORT QUARRY

716-439-1300

3301

400 Hinman Rd

Scale: 1 Weighmaster: Kimberly S

RECEIVED:

Ticket: 128364313

4/18/2017 12:47:07PM

Customer: 55965 PARISO LOGISTICS INC

Order: 400368208 Gates Circle

P.O.:

Pickup

Dispatch 0

Truck: PL113

License 47650MI

Hauler: 4000000 CUSTOMER VEHICLE

Zone: ZONE0

Max GVW 73,750

Product: 8516 CS.#2 STONE

Pounds

Alt

Gross: 71980

32650

Tare: 27840 *

12628 *

Net: 44140

20022

Quantity: 22.07 Ton

Today: 22.07 Ton

Loads: 1

* Predetermined Tare

Cash Sale

Price

Amount

Material:

Other:

Tax:

Total:

L 326450

PARISO LOGISTICS, INC.

JOB#

3649 River Road

Tonawanda, NY 14150

OFFICE 875-6168

FAX: 875-4121

CUSTOMER: W.D.S. DATE: 4/18/17

LOAD LOCATION: LOCKPORT DUMP LOCATION: Quarry

HIRED TRUCK COMPANY: 13 T. Shaw JOB START: 2:30

TRUCK # & DRIVER: 13 T. Shaw JOB FINISH:

☐ DUMP TRUCK SERVICE ☐ SLINGER SERVICE TRAVEL TIME:

☐ DUMP TRAILER SERVICE ☐ OTHER ☐ LUNCH ☒ NO LUNCH

MATERIAL HAULED: 2' ice TOTAL:

| LD # | TICKET # | WEIGHT | WAIT TIME ON JOB IN - OUT | REMARKS: SPECIFY ON "HOLD" @ PLANT, TOLLS, DUMP LOCATIONS, ETC. |
|------|-----------|--------|------------------------------|--|
| 1 | 128364438 | 21.96 | 30-30 | Quarry 2:30-2:45 |
| 2 | | | | |
| 3 | | | | |
| 4 | | | | |
| 5 | | | | |
| 6 | | | | |
| 7 | | | | |
| 8 | | | | |
| 9 | | | | |
| 10 | | | | |
| 11 | | | | |
| 12 | | | | |
| 13 | | | | |
| 14 | | | | |
| 15 | | | | |

OUR RESPONSIBILITY ENDS AT THE CURB

CUSTOMER'S SIGNATURE: [Signature]

JOB COPY

Lafarge LOCKPORT QUARRY
3301 400 Hinman Rd

716-439-1300

Scale: 2 Weighmaster: Kimberly S

RECEIVED:

Ticket: 128364438 4/18/2017 2:46:56PM

Customer: 55965 PARISO LOGISTICS INC

Order: 400368208 Gates Circle

P.O.: Pickup

Dispatch 0

Truck: PL113 License 47650MI

Hauler: 4000000 CUSTOMER VEHICLE

Zone: ZONE0 Max GVW 73,750

Product: 600829 304.122" ROC

| | Pounds | Alt |
|-----------|-----------|----------------------|
| Gross: | 71760 | 32550 |
| Tare: | 27840 * | 12628 * |
| Net: | 43920 | 19922 |
| Quantity: | 21.96 Ton | |
| Today: | 21.96 Ton | |
| Loads: | 1 | * Predetermined Tare |

| Cash Sale | Price | Amount |
|-----------|-------|--------|
| Material: | | |
| Other: | | |
| Tax: | | |
| Total: | | |

L 322451

PARISO LOGISTICS, INC.

JOB#

3649 River Road

Tonawanda, NY 14150

OFFICE: 875-6168

FAX: 875-4121

| | | | |
|---|--|---|--|
| DD5 CUSTOMER | | DATE 5/3/17 | |
| LOAD LOCATION Lockport | | DUMP LOCATION Gates Circle | |
| HIRED TRUCK COMPANY BTS | | JOB START | |
| TRUCK # & DRIVER 500 Clardy | | JOB FINISH | |
| <input checked="" type="checkbox"/> DUMP TRUCK SERVICE <input type="checkbox"/> SLINGER SERVICE <input type="checkbox"/> DUMP TRAILER SERVICE <input type="checkbox"/> OTHER | | TRAVEL TIME | |
| MATERIAL HAULED 2" Roc | | <input type="checkbox"/> LUNCH <input type="checkbox"/> NO LUNCH TOTAL | |

| LD # | TICKET # | WEIGHT | WAIT TIME ON JOB IN - OUT | REMARKS SPECIFY: ON "HOLD" @ PLANT, TOLLS, DUMP LOCATIONS, ETC. |
|------|-----------|--------|------------------------------|--|
| 1 | 128367654 | 22.81 | - | |
| 2 | 128367718 | 23.34 | - | |
| 3 | 128367768 | 22.84 | - | |
| 4 | | | - | |
| 5 | | | - | |
| 6 | | | - | |
| 7 | | | - | |
| 8 | | | - | |
| 9 | | | - | |
| 10 | | | - | |
| 11 | | | - | |
| 12 | | | - | |
| 13 | | | - | |
| 14 | | | - | |
| 15 | | | - | |

OUR RESPONSIBILITY ENDS AT THE CURB

CUSTOMER'S SIGNATURE: _____

JOB COPY

Lafarge LOCKPORT QUARRY 716-439-1300
3301 400 Hinman Rd

Scale: 1 Weighmaster: Kimberly S

RECEIVED: _____

Ticket: 128367768 5/3/2017 11:45:49AM

Customer: 55965 PARISO LOGISTICS INC

Order: 400368208 Gates Circle

| | |
|----------------------------------|--------------------------|
| P.O.: | Pickup |
| Dispatch 0 | |
| Truck: BTS500 | License 53897JE |
| Hauler: 4000000 CUSTOMER VEHICLE | |
| Zone: ZONE0 | Max GVW 72,813 |
| Product: 600829 304.122" ROC | |
| | <u>Pounds</u> <u>Alt</u> |
| Gross: | 71540 32450 |
| Tare: | 25860 * 11730 * |
| Net: | 45680 20720 |
| Quantity: | 22.84 Ton |
| Today: | 68.99 Ton |
| Loads: | 3 * Predetermined Tare |

| | | |
|-----------|-------|--------|
| Cash Sale | Price | Amount |
|-----------|-------|--------|

Material:

Other:

Tax:

Total:

L-322451

Lafarge LOCKPORT QUARRY 716-439-1300
3301 400 Hinman Rd
Scale: 1 Weighmaster: Kimberly S
RECEIVED:
Ticket: 128367718 5/3/2017 10:17:14AM

Customer: 55965 PARISO LOGISTICS INC
Order: 400368208 Gates Circle

P.O.: Pickup
Dispatch 0
Truck: BTS500 License 53897JE
Hauler: 4000000 CUSTOMER VEHICLE
Zone: ZONE0 MaxGVW 72,813

Product: 600829 304.122" ROC

| | Pounds | Alt |
|--------|---------|---------|
| Gross: | 72540 | 32904 |
| Tare: | 25860 * | 11730 * |
| Net: | 46680 | 21174 |

Quantity: 23.34 Ton

Today: 46.15 Ton

Loads: 2

* Predetermined Tare

| Cash Sale | Price | Amount |
|-----------|-------|--------|
|-----------|-------|--------|

Material:

Other:

Tax:

Total:

Lafarge LOCKPORT QUARRY 716-439-1300
3301 400 Hinman Rd
Scale: 1 Weighmaster: Kimberly S
RECEIVED:
Ticket: 128367659 5/3/2017 8:47:54AM

Customer: 55965 PARISO LOGISTICS INC
Order: 400368208 Gates Circle

P.O.: Pickup
Dispatch 0
Truck: BTS500 License 53897JE
Hauler: 4000000 CUSTOMER VEHICLE
Zone: ZONE0 MaxGVW 72,813

Product: 600829 304.122" ROC

| | Pounds | Alt |
|--------|---------|---------|
| Gross: | 71480 | 32423 |
| Tare: | 25860 * | 11730 * |
| Net: | 45620 | 20693 |

Quantity: 22.81 Ton

Today: 22.81 Ton

Loads: 1

* Predetermined Tare

| Cash Sale | Price | Amount |
|-----------|-------|--------|
|-----------|-------|--------|

Material:

Other:

Tax:

Total:

PARISO LOGISTICS, INC.

3649 River Road
Tonawanda, NY 14150

JOB#

OFFICE: 875-6168

FAX: 875-4121

| | | | |
|--|--|---|--|
| CUSTOMER <u>DD5</u> | | DATE <u>5/3/17</u> | |
| LOAD LOCATION <u>Lockport</u> | | DUMP LOCATION <u>Gates Circle</u> | |
| HIRED TRUCK COMPANY <u>BTS</u> | | JOB START | |
| TRUCK # & DRIVER <u>500 Chucky</u> | | JOB FINISH | |
| <input type="checkbox"/> DUMP TRUCK SERVICE <input type="checkbox"/> SLINGER SERVICE <input type="checkbox"/> DUMP TRAILER SERVICE <input type="checkbox"/> OTHER | | TRAVEL TIME | |
| MATERIAL HAULED <u>Washed 2's</u> | | <input type="checkbox"/> LUNCH <input type="checkbox"/> NO LUNCH TOTAL | |

| LD # | TICKET # | WEIGHT | WAIT TIME ON JOB IN - OUT | REMARKS SPECIFY: ON "HOLD" @ PLANT, TOLLS, DUMP LOCATIONS, ETC. |
|------|----------|--------|------------------------------|--|
| 1 | 12867814 | 22.92 | - | |
| 2 | | | - | |
| 3 | | | - | |
| 4 | | | - | |
| 5 | | | - | |
| 6 | | | - | |
| 7 | | | - | |
| 8 | | | - | |
| 9 | | | - | |
| 10 | | | - | |
| 11 | | | - | |
| 12 | | | - | |
| 13 | | | - | |
| 14 | | | - | |
| 15 | | | - | |

OUR RESPONSIBILITY ENDS AT THE CURB

CUSTOMER'S SIGNATURE: [Signature]

JOB COPY

Lafarge LOCKPORT QUARRY 716-439-1300
3301 400 Hinman Rd

Scale: 1 Weighmaster: Kimberly S

RECEIVED: _____

Ticket: 128367814 5/3/2017 1:13:20PM

Customer: 55965 PARISO LOGISTICS INC
Order: 400368208 Gates Circle

P.O.: _____ Pickup
Dispatch 0

Truck: **BTS500** License 53897JE
Hauler: **4000000 CUSTOMER VEHICLE**
Zone: **ZONE0** Max GWW 72,813

Product: 8515 CS, WASHED 2

| | Pounds | Alt |
|-----------|-----------|---------|
| Gross: | 71700 | 32523 |
| Tare: | 25860 * | 11730 * |
| Net: | 45840 | 20793 |
| Quantity: | 22.92 Ton | |
| Today: | 22.92 Ton | |
| Loads: | 1 | |

* Predetermined Tare

| Cash Sale | Price | Amount |
|-----------|-------|--------|
| Material: | | |
| Other: | | |
| Tax: | | |
| Total: | | |

PARISO LOGISTICS, INC.

3649 River Road

Tonawanda, NY 14150

OFFICE: 875-6168

JOB#
6975
FAX: 875-4121

CUSTOMER: Lockport DATE: 5/2/17

LOAD LOCATION: Lockport DUMP LOCATION: Gates Circle

HIRED TRUCK COMPANY: 13/05ma

TRUCK # & DRIVER: 13/05ma

☒ DUMP TRUCK SERVICE ☐ SLINGER SERVICE
☐ DUMP TRAILER SERVICE ☐ OTHER

MATERIAL HAULED: 2' x 6'

JOB START: 1:00
JOB FINISH: 1:00
TRAVEL TIME: 1:00
☐ LUNCH ☐ NO LUNCH
TOTAL: 1:00

| LD # | TICKET # | WEIGHT | WAIT TIME ON JOB IN - OUT | REMARKS SPECIFY: ON "HOLD" @ PLANT, TOLLS, DUMP LOCATIONS, ETC. |
|------|-----------|--------|------------------------------|--|
| 1 | 128367537 | 22.11 | 2:10-2:15 | |
| 2 | | | - | |
| 3 | | | - | |
| 4 | | | - | |
| 5 | | | - | |
| 6 | | | - | |
| 7 | | | - | |
| 8 | | | - | |
| 9 | | | - | |
| 10 | | | - | |
| 11 | | | - | |
| 12 | | | - | |
| 13 | | | - | |
| 14 | | | - | |
| 15 | | | - | |

OUR RESPONSIBILITY ENDS AT THE CURB

CUSTOMER'S SIGNATURE: [Signature]

JOB COPY

Lafarge LOCKPORT QUARRY 716-439-1300
3301 400 Hinman Rd

Scale: 1 Weighmaster: Kimberly S

RECEIVED: _____

Ticket: 128367537 5/2/2017 1:14:53PM

Customer: 55965 PARISO LOGISTICS INC
Order: 400368208 Gates Circle

P.O.: Pickup
Dispatch 0

Truck: PLI13 License 47650MI
Hauler: 4000000 CUSTOMER VEHICLE
Zone: ZONE0 Max GWW 73,750

Product: 600829 304.12 2" ROC

| | | |
|-----------|-----------|-------|
| | Pounds | Alt |
| Gross: | 72160 | 32731 |
| Tare: | 27940 | 12673 |
| Net: | 44220 | 20058 |
| Quantity: | 22.11 Ton | |
| Today: | 22.11 Ton | |
| Loads: | 1 | |

| | | |
|-----------|-------|--------|
| Cash Sale | Price | Amount |
| Material: | | |
| Other: | | |
| Tax: | | |
| Total: | | |

PARISO LOGISTICS, INC.

JOB#

3649 River Road

Tonawanda, NY 14150

OFFICE: 875-6168

FAX: 875-4121

| | | | |
|---|--|--|--|
| D. D. S. CUSTOMER | | 06/01/17 DATE | |
| Lafarge Lockport LOAD LOCATION | | Gates Circle DUMP LOCATION | |
| HIRED TRUCK COMPANY | | JOB START | |
| TRUCK # & DRIVER | | JOB FINISH | |
| <input checked="" type="checkbox"/> DUMP TRUCK SERVICE <input type="checkbox"/> SLINGER SERVICE <input type="checkbox"/> DUMP TRAILER SERVICE <input type="checkbox"/> OTHER | | TRAVEL TIME | |
| MATERIAL HAULED | | <input type="checkbox"/> LUNCH <input type="checkbox"/> NO LUNCH | |
| | | TOTAL | |

| LD # | TICKET # | WEIGHT | WAIT TIME ON JOB IN - OUT | REMARKS SPECIFY: ON "HOLD" @ PLANT, TOLLS, DUMP LOCATIONS, ETC. |
|------|----------|--------|------------------------------|--|
| ① | 79166 | 22.42 | - | |
| 2 | | | - | |
| 3 | | | - | |
| 4 | | | - | |
| 5 | | | - | |
| 6 | | | - | |
| 7 | | | - | |
| 8 | | | - | |
| 9 | | | - | |
| 10 | | | - | |
| 11 | | | - | |
| 12 | | | - | |
| 13 | | | - | |
| 14 | | | - | |
| 15 | | | - | |

OUR RESPONSIBILITY ENDS AT THE CURB

CUSTOMER'S SIGNATURE:

JOB COPY

Lafarge LOCKPORT QUARRY 716-439-1300
3301 400 Hinman Rd

Scale: 2 Weighmaster: Kimberly S

RECEIVED:

Ticket: 128374166 6/1/2017 9:10:25AM

Customer: 55965 PARISO LOGISTICS INC

Order: 400368208 Gates Circle

P.O.: Pickup

Dispatch 0

Truck: PLI32 License PLI32

Hauler: 4000000 CUSTOMER VEHICLE

Zone: ZONE0 Max GVW 73,750

Product: 600829 304.122" ROC

| | Pounds | Alt |
|--------|---------|---------|
| Gross: | 72600 | 32931 |
| Tare: | 27760 * | 12592 * |
| Net: | 44840 | 20339 |

Quantity: 22.42 Ton

Today: 22.42 Ton

Loads: 1 * Predetermined Tare

| Cash Sale | Price | Amount |
|-----------|-------|--------|
|-----------|-------|--------|

Material:

Other:

Tax:

Total:

PARISO LOGISTICS, INC.

JOB#

3649 River Road

Tonawanda, NY 14150

OFFICE: 875-6168

FAX: 875-4121

D.O.S. CUSTOMER 06/01/17 DATE

Lafarge Lockport LOAD LOCATION Gates Circle DUMP LOCATION

HIRED TRUCK COMPANY 32 JOB START

TRUCK # & DRIVER John Miller JOB FINISH

☒ DUMP TRUCK SERVICE ☐ SLINGER SERVICE TRAVEL TIME

☒ DUMP TRAILER SERVICE ☐ OTHER ☐ LUNCH ☐ NO LUNCH

MATERIAL HAULED 2" 6 1/2 TOTAL

| LD # | TICKET # | WEIGHT | WAIT TIME ON JOB IN - OUT | REMARKS SPECIFY: ON "HOLD" @ PLANT, TOLLS, DUMP LOCATIONS, ETC. |
|------|----------|--------|------------------------------|--|
| ① | 79166 | 22.42 | | |
| 2 | | | | |
| 3 | | | | |
| 4 | | | | |
| 5 | | | | |
| 6 | | | | |
| 7 | | | | |
| 8 | | | | |
| 9 | | | | |
| 10 | | | | |
| 11 | | | | |
| 12 | | | | |
| 13 | | | | |
| 14 | | | | |
| 15 | | | | |

OUR RESPONSIBILITY ENDS AT THE CURB

CUSTOMER'S SIGNATURE: [Signature]

JOB COPY

Lafarge LOCKPORT QUARRY 716-439-1300
3301 400 Hinman Rd
Scale: 2 Weighmaster: Kimberly S
RECEIVED:
Ticket: 128374166 6/1/2017 9:10:25AM

Customer: 55965 PARISO LOGISTICS INC
Order: 400368208 Gates Circle

P.O.: Pickup
Dispatch 0
Truck: PLI32 License PLI32
Hauler: 4000000 CUSTOMER VEHICLE
Zone: ZONE0 MaxGVW 73,750

Product: 600829 304.12 2" ROC
Pounds Alt
Gross: 72600 32931
Tare: 27760 * 12592 *
Net: 44840 20339
Quantity: 22.42 Ton
Today: 22.42 Ton
Loads: 1 * Predetermined Tare

Cash Sale Price Amount
Material:
Other:
Tax:
Total:

PARISO LOGISTICS, INC.

3649 River Road

Tonawanda, NY 14150

OFFICE: 875-6168

JOB#

6475 FAX: 875-4121

CUSTOMER

DATE

LOAD LOCATION

DUMP LOCATION

HIRED TRUCK COMPANY

JOB START

TRUCK # & DRIVER

JOB FINISH

☐ DUMP TRUCK SERVICE

☐ SLINGER SERVICE

TRAVEL TIME

☐ DUMP TRAILER SERVICE

☐ OTHER

☐ LUNCH

☒ NO LUNCH

MATERIAL HAULED

TOTAL

| LD # | TICKET # | WEIGHT | WAIT TIME ON JOB IN - OUT | REMARKS SPECIFY: ON "HOLD" @ PLANT, TOLLS, DUMP LOCATIONS, ETC. |
|------|----------|--------|------------------------------|--|
| 1 | 5356 | 18yds | - | |
| 2 | 5362 | 18yds | - | |
| 3 | 5001 | 18yds | - | |
| 4 | | | - | |
| 5 | | | - | |
| 6 | | | - | |
| 7 | | | - | |
| 8 | | | - | |
| 9 | | | - | |
| 10 | | | - | |
| 11 | | | - | |
| 12 | | | - | |
| 13 | | | - | |
| 14 | | | - | |
| 15 | | | - | BPARISO-13529 |

OUR RESPONSIBILITY ENDS AT THE CURB

CUSTOMER'S SIGNATURE:

JOB COPY

PARISO LOGISTICS, INC.

3649 River Road

Tonawanda, NY 14150

OFFICE: 875-6168

FAX: 8

CUSTOMER

DATE

LOAD LOCATION

DUMP LOCATION

HIRED TRUCK COMPANY

JOB START

TRUCK # & DRIVER

JOB FINISH

☐ DUMP TRUCK SERVICE

☐ SLINGER SERVICE

TRAVEL TIME

☐ DUMP TRAILER SERVICE

☐ OTHER

☐ LUNCH

☐ NO LUNCH

MATERIAL HAULED

TOTAL

| LD # | TICKET # | WEIGHT | WAIT TIME ON JOB IN - OUT | REMARKS SPECIFY: ON "HOLD" @ TOLLS, DUMP LOCATIONS, ETC. |
|------|----------|--------|------------------------------|---|
| 1 | 5355 | 18yds | 810 - 820 | |
| 2 | 5361 | 16yds | 925 - 940 | |
| 3 | 4977 | 16yds | 1040 - 1050 | |
| 4 | | | - | |
| 5 | | | - | |
| 6 | | | - | |
| 7 | | | - | |
| 8 | | | - | |
| 9 | | | - | |
| 10 | | | - | |
| 11 | | | - | |
| 12 | | | - | |
| 13 | | | - | |
| 14 | | | - | |
| 15 | | | - | |

OUR RESPONSIBILITY ENDS AT THE CURB

CUSTOMER'S SIGNATURE:

JOB COPY

PARISO LOGISTICS, INC.

JOB#

3649 River Road
Tonawanda, NY 14150

OFFICE: 875-6168

FAX: 875-4121

6975

CUSTOMER

LOAD LOCATION

DUMP LOCATION

DATE

HIRED TRUCK COMPANY

TRUCK # & DRIVER

☒ DUMP TRUCK SERVICE

☐ SLINGER SERVICE

☐ DUMP TRAILER SERVICE

☐ OTHER

MATERIAL HAULED

JOB START

JOB FINISH

TRAVEL TIME

☐ LUNCH

☐ NO LUNCH

TOTAL

REMARKS SPECIFY: ON "HOLD" @ PLANT,
TOLLS, DUMP LOCATIONS, ETC.

| LD # | TICKET # | WEIGHT | WAIT TIME ON JOB IN - OUT |
|------|----------|--------|------------------------------|
| 1 | 5335 | 21 yds | |
| 2 | 5336 | " | |
| 3 | 5337 | " | |
| 4 | 5339 | " | |
| 5 | 5340 | " | |
| 6 | 5341 | " | |
| 7 | 5342 | " | |
| 8 | | | |
| 9 | | | |
| 10 | | | |
| 11 | | | |
| 12 | | | |
| 13 | | | |
| 14 | | | |
| 15 | | | |

OUR RESPONSIBILITY ENDS AT THE CURB

CUSTOMER'S SIGNATURE:

JOB COPY

PARISO LOGISTICS, INC.

3649 River Road
Tonawanda, NY 14150

OFFICE: 875-6168

FAX: 875-4121

CUSTOMER

LOAD LOCATION

DUMP LOCATION

DATE

HIRED TRUCK COMPANY

TRUCK # & DRIVER

☐ DUMP TRUCK SERVICE

☒ SLINGER SERVICE

☐ DUMP TRAILER SERVICE

☐ OTHER

MATERIAL HAULED

JOB START

JOB FINISH

TRAVEL TIME

☐ LUNCH

☐ NO LUNCH

TOTAL

| LD # | TICKET # | WEIGHT | WAIT TIME ON JOB IN - OUT | REMARKS SPECIFY: ON "HOLD" @ PLANT, TOLLS, DUMP LOCATIONS, ETC. |
|------|----------|--------|------------------------------|--|
| 1 | 5345 | 18 yds | | |
| 2 | | | | |
| 3 | | | | |
| 4 | | | | |
| 5 | | | | |
| 6 | | | | |
| 7 | | | | |
| 8 | | | | |
| 9 | | | | |
| 10 | | | | |
| 11 | | | | |
| 12 | | | | |
| 13 | | | | |
| 14 | | | | |
| 15 | | | | |

OUR RESPONSIBILITY ENDS AT THE CURB

CUSTOMER'S SIGNATURE:

JOB COPY

PARISO LOGISTICS, INC.

3649 River Road
Tonawanda, NY 14150

JOB#

6975
FAX: 875-4121

OFFICE: 875-6168

CUSTOMER

LOAD LOCATION

DUMP LOCATION

DATE

HIRED TRUCK COMPANY

TRUCK # & DRIVER

JOB START

JOB FINISH

TRAVEL TIME

☐ LUNCH

☒ NO LUNCH

TOTAL

☒ DUMP TRUCK SERVICE

☐ SLINGER SERVICE

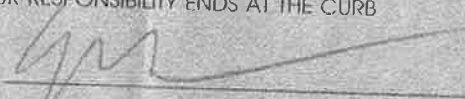
☐ DUMP TRAILER SERVICE

☐ OTHER

MATERIAL HAULED

| LD # | TICKET # | WEIGHT | WAIT TIME ON JOB IN - OUT | REMARKS SPECIFY: ON "HOLD" @ PLANT, TOLLS, DUMP LOCATIONS, ETC. |
|------|----------|--------|------------------------------|--|
| 1 | 4958 | 21 yds | 8:35 - 8:50 | |
| 2 | 4960 | 21 yds | 9:55 - 10:00 | |
| 3 | 4962 | 21 yds | 11:05 - 11:10 | |
| 4 | 4964 | 21 yds | 12:20 - 12:30 | |
| 5 | 5326 | 21 yds | 1:30 - 1:40 | |
| 6 | 5328 | 21 yds | 3:00 - 3:10 | |
| 7 | 5330 | 21 yds | 4:05 - 4:10 | |
| 8 | 5332 | 21 yds | 5:00 - 5:10 | |
| 9 | | | | |
| 10 | | | | |
| 11 | | | | |
| 12 | | | | |
| 13 | | | | |
| 14 | | | | |
| 15 | | | | |

OUR RESPONSIBILITY ENDS AT THE CURB

CUSTOMER'S SIGNATURE: 

JOB COPY

PARISO LOGISTICS, INC.

3649 River Road
Tonawanda, NY 14150

OFFICE: 875-6168

CUSTOMER

LOAD LOCATION

DUMP LOCATION

HIRED TRUCK COMPANY

TRUCK # & DRIVER

JOB START

JOB FINISH

TRAVEL TIME

☐ LUNCH

☒ NO

☒ DUMP TRUCK SERVICE

☐ SLINGER SERVICE

☐ DUMP TRAILER SERVICE

☐ OTHER

MATERIAL HAULED

TOTAL

| LD # | TICKET # | WEIGHT | WAIT TIME ON JOB IN - OUT | REMARKS SPECIFY: ON "HOLD" @ PLANT, TOLLS, DUMP LOCATIONS, ETC. |
|------|----------|--------|------------------------------|--|
| 1 | 4954 | 21 yds | 8:35 - 8:50 | |
| 2 | 4961 | 21 yds | 10:10 - 10:15 | |
| 3 | 4963 | 21 yds | 11:25 - 11:30 | |
| 4 | 4965 | 21 yds | 12:25 - 12:30 | |
| 5 | 5327 | 21 yds | 1:45 - 1:50 | |
| 6 | 5329 | 21 yds | 3:05 - 3:10 | |
| 7 | 5331 | 21 yds | 4:10 - 4:15 | |
| 8 | | | | |
| 9 | | | | |
| 10 | | | | |
| 11 | | | | |
| 12 | | | | |
| 13 | | | | |
| 14 | | | | |
| 15 | | | | |

OUR RESPONSIBILITY ENDS AT THE CURB

CUSTOMER'S SIGNATURE: 

JOB COPY



HIRED TRUCK TICKET CARMEN M. PARISO, INC.

3649 River Road
Tonawanda, NY 14150

OFFICE: 875-6168

JOB#

6975
FAX: 875-4121

CUSTOMER D.D.S. 6975 DATE 8/13/2017

LOAD LOCATION 218 OLD FRENCH, W. SENICA DUMP LOCATION 3 GATES CIRCLE, BLO

HIRED TRUCK COMPANY C.J. KRANTZ JOB START 7:45

TRUCK # & DRIVER 95 BIG BIRD VIC JOB FINISH 11:15

☒ DUMP TRUCK SERVICE ☐ SLINGER SERVICE TRAVEL TIME 1

☐ DUMP TRAILER SERVICE ☐ OTHER ☐ LUNCH ☒ NO LUNCH

MATERIAL HAULED SCREENED TOPSOIL TOTAL 4.5

| LD # | TICKET # | WEIGHT | WAIT TIME ON JOB IN - OUT | REMARKS SPECIFY: ON "HOLD" @ PLANT, TOLLS, DUMP LOCATIONS, ETC. |
|------|----------|--------|------------------------------|--|
| 1 | 5359 | 20 YDS | 7:45 - 8:01 | |
| 2 | 5363 | 20 YDS | 9:00 - 9:20 | |
| 3 | 4975 | 20 YDS | 10:15 - 10:34 | |
| 4 | | | - | |
| 5 | | | - | |
| 6 | | | - | |
| 7 | | | - | |
| 8 | | | - | |
| 9 | | | - | |
| 10 | | | - | |
| 11 | | | - | |
| 12 | | | - | |
| 13 | | | - | |
| 14 | | | - | |
| 15 | | | - | |

OUR RESPONSIBILITY ENDS AT THE CURB

CUSTOMER'S SIGNATURE: [Signature]

JOB COPY



C.J. Krantz Inc.

(716) 741-3850 Organic Topsoil Farm

8960 Lapp Rd. • Clarence, NY 14032

CUSTOMER PARISO LOGISTICS / D.D.S. 6975 DATE 8/13/17

LOAD LOCATION 218 OLD FRENCH, W. SENICA DUMP LOCATION 3 GATES CIRCLE, BLO

HIRED TRUCK COMPANY C.J. KRANTZ JOB START 7:45

TRUCK # & DRIVER 95 BIG BIRD VIC JOB FINISH 11:15

☐ LUNCH ☒ NO LUNCH TRAVEL TIME 1

MATERIAL HAULED SCREENED TOPSOIL TOTAL 4.5

| LD # | TICKET # | WEIGHT | WAIT TIME ON JOB IN - OUT | REMARKS |
|------|----------|--------|------------------------------|---------|
| 1 | 5359 | 20 YD | 7:45 - 8:01 | |
| 2 | 5363 | 20 YD | 9:00 - 9:20 | |
| 3 | 4975 | 20 YD | 10:15 - 10:34 | |
| | | | - | |
| | | | - | |
| | | | - | |
| | | | - | |
| | | | - | |
| | | | - | |
| | | | - | |
| | | | - | |
| | | | - | |
| | | | - | |
| | | | - | |
| | | | - | |
| | | | - | |

OUR RESPONSIBILITY ENDS AT THE CURB

CUSTOMER'S SIGNATURE: [Signature]

APPENDIX D

PHOTOGRAPHIC LOG

SITE PHOTOGRAPHS

Photo 1:



Photo 2:



Photo 3:



Photo 4:



Photo 1: Checking final sub-grade depth prior to cover system install, looking east.

Photo 2: Checking final sub-grade depth prior to cover system install, looking north.

Photo 3: Installation of orange demarcation barrier and crushed stone cover system, looking northwest.

Photo 4: Stone cover system, looking south.

SITE PHOTOGRAPHS

Photo 5:



Photo 6:



Photo 7:



Photo 8:



Photo 5: Installing nine inches of loose stone in chiller pad and generator area, looking southeast.

Photo 6: Prepping for main entrance terrace on north side of building, looking south.

Photo 7: Installation of 2-foot cover system around terrace on south side of building, looking north.

Photo 8: Installation of cover system on south side of garage ramp, looking west.

SITE PHOTOGRAPHS

Photo 9:



Photo 10:



Photo 11:



Photo 12:



Photo 9: Installation of cover system north side of garage ramp, looking north.

Photo 10: Checking Subgrade along north east side of building, looking south.

Photo 11: Installation of covers system northeast side of building, looking north.

Photo 12: Cover system east side of building, looking west.

SITE PHOTOGRAPHS

Photo 13:



Photo 14:



Photo 15:



Photo 16:



Photo 13: Completed cover system northeast side of building, looking south.

Photo 14: Completed cover system along the Lafayette Connector roadway, looking north.

Photo 15: Completed Cover system northeast corner of building, looking north.

Photo 16: Completed cover system north side of building, looking northeast.

SITE PHOTOGRAPHS

Photo 17:



Photo 18:



Photo 19:



Photo 20:



Photo 17: Completed Canterbury Woods assisted living facility, looking north.

Photo 18: Existing Site building and eastern portion of Lancaster Extension, looking east.

Photo 19: Lancaster Extension roadway, looking west.

Photo 20: Asphalt cover of Lancaster Extension, looking east.

SITE PHOTOGRAPHS

Photo 21:



Photo 22:



Photo 23:



Photo 24:



Photo 21: Stone cover system along eastern portion of Site, looking south.

Photo 22: Stone cover system along eastern portion of Site, looking north

Photo 23: Asphalt cover, north end of Lafayette Connector and east side of Canterbury Woods building, looking west.

Photo 24: Vegetative soil cover on north side of Canterbury Woods building looking south west.