

**NEW YORK STATE  
DEPARTMENT OF**



**ENVIRONMENTAL  
CONSERVATION**

**Dear Interested Citizen:**

This Fact Sheet is to inform you about the upcoming investigation at the Durkee Street Parking Lot facility in the City of Plattsburgh. If you have any questions or would like more information, please contact:

**Mr. Russell D. Huyck, P.E.**  
Project Manager  
NYSDEC  
Route 86, P.O. Box 296  
Ray Brook, NY 12977  
(518) 897-1242

For site related health questions, please contact the following New York State Department of Health (NYSDOH) representative at:

**Mr. Trevor Wescott**  
NYSDOH  
Flanigan Square  
547 River Street  
Troy, NY 12180-2216  
(518) 402-7870

# FACT SHEET

## **Durkee Street Parking Lot Environmental Restoration Program**

**City of Plattsburgh  
2005**

### **INTRODUCTION**

The New York State Department of Environmental Conservation (NYSDEC), in cooperation with the New York State Department of Health (NYSDOH) and the City of Plattsburgh are pleased to inform you that an Environmental Restoration Program (ERP) agreement has been reached for an investigation of the Durkee Street Parking Lot site. The site is located on the Durkee Street in the City of Plattsburgh, Clinton County. A site investigation will begin in the upcoming months to determine if soil and/or groundwater contamination at this site requires additional remedial measures.

### **BACKGROUND**

The parking lot that is the subject of this ERP consists of approximately 4.4 acres of property generally east of Durkee Street, north of Broad Street and south of Bridge Street, in the City of Plattsburgh, New York. The site's previous uses have included sign painting, rug cleaning and dry cleaning businesses, auto repair activities, Plattsburgh Steam Laundry, the former Carroll's Excelsior Mills, bowling/billiards hall, various storage buildings, apartments, dwellings, bakery and restaurant.

A "gasoline tank" was also depicted on historical maps of the facility. It is possible that these activities resulted in the releases of contaminants to the environment.

### **PREVIOUS INVESTIGATIONS**

An environmental investigation conducted within the southern portion of the site in the spring of 2004 by others, concluded that contaminated soils beneath the site may pose a threat to groundwater and may require remediation. Contaminants detected at concentration exceeding regulatory standards and guidance values for soils included volatile organic compounds (VOCs), semi-volatile organic compounds (SVOCs) and metals.

**View on the internet at: [www.dec.state.ny.us/website/der/projects/reg5](http://www.dec.state.ny.us/website/der/projects/reg5)**

## UPCOMING ACTIVITIES

The goal of the investigation which will begin in Spring 2005 is to further characterize the distribution of contamination in soil and groundwater, in order to determine the necessity and scope of potential remedial actions. The scope of work will include:

- a site reconnaissance to identify areas and conditions of concern not previously identified;
- a site wide subsurface/hydrogeologic evaluation which will include borings and monitoring wells;
- surface soil, fill, and groundwater sampling and laboratory analysis; and
- a soil gas survey.

The investigation results will then be evaluated to determine what, if any, additional work is necessary at the site.

## DOCUMENT REPOSITORIES

Public understanding and involvement are important to the success of New York's Environmental Restoration Program. As the project progresses, the NYSDEC will distribute fact sheets, like this one, to keep you informed. In addition, the Department has also placed site documents in a repository for you to read.

The NYSDEC has established the following document repositories:

NYSDEC Regional Office  
Route 86, P. O. Box 296  
Ray Brook, N Y 12977  
call (518) 897-1242 for an appointment

City of Plattsburgh  
Office of Community Development  
41 City Hall Place  
Plattsburgh NY 12901  
call (518) 563-7642 for an appointment

City of Plattsburgh Public Library  
19 Oak Street  
Plattsburgh NY 12901  
call (518) 563-0921 for an appointment




Any **site related questions or concerns** can be addressed by contacting Mr. Russell Huyck, at (518) 897-1242. **For health related concerns regarding this site** feel free to contact the New York State Department of Health's Mr. Trevor Wescott, at (518) 402-7870.



UNAUTHORIZED ALTERATION OR ADDITION TO  
THIS DOCUMENT IS A VIOLATION OF SECTION  
7209 SUBDIVISION 2 OF THE NEW YORK STATE  
EDUCATION LAW.

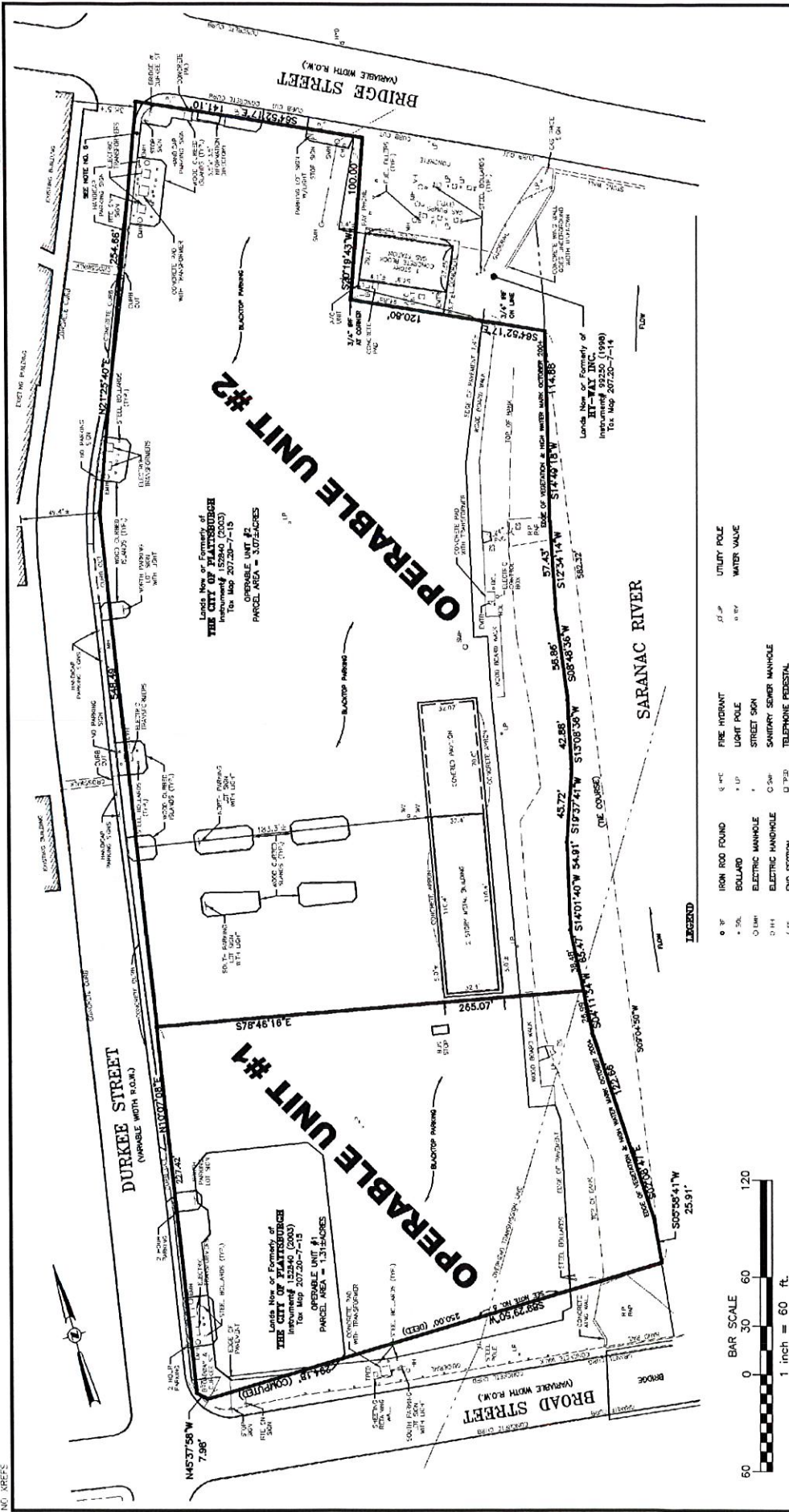


NOTES:  
THE LOCATIONS AND FEATURES DEPICTED ON THIS  
MAP ARE APPROXIMATE AND DO NOT REPRESENT  
AN ACTUAL FIELD SURVEY.

Date	RECORD OF WORK	Appr.	SITE LOCATION MAP DURKEE STREET PARKING LOT	
			CITY OF PLATTSBURGH	CLINTON COUNTY, NY
			<b>C.T. MALE ASSOCIATES, P.C.</b> 50 CENTURY HILL DRIVE, P.O. BOX 727, LATHAM, NY 12110 518.786.7400 * FAX 518.786.7299	
			Architecture & Building Systems Engineering * Civil Engineering Environmental Services * Survey & Land Information Services	
Drafter: J.MARX	Checker: K.MOLINE		  	
Appr. by:	Proj. No. 04.9498		SCALE: NOT TO SCALE	DATE: OCTOBER 2004

CAD DWG. FILE NAME: SITE LOC MAP.DWG





## FIGURE 2 SITE PLAN

**PLATTSBURGH GATEWAY PROJECT  
DURKEE STREET PARKING LOT**

CITY OF PLATTSBURGH

**C.T. MALE ASSOCIATES, P.C.**

50 CENTURY HILL DRIVE, P.O. BOX 727, LATHAM, NY 12110  
518.786.7400 • FAX 518.786.7299

ARCHITECTURE & BUILDING SYSTEMS ENGINEERING \* CIVIL ENGINEERING  
ENVIRONMENTAL SERVICES \* SURVEY & LAND INFORMATION SERVICES

1

1

1

	DATE	REVISIONS RECORD/DESCRIPTION	DRAFTED	CHECK	APPR.	UNAUTHORIZED ALTERATION OF ADDITION TO THIS DOCUMENT IS A VIOLATION OF SECTION 7- Z. PLANNING CODE, CITY OF NEW YORK STATE EDUCATION LAW. C.T. MALE ASSOCIATES, P.C. © 2004
NOTE: 1. THE LOCATIONS AND FEATURES DEPICTED ON THIS MAP ARE APPROXIMATE AND DO NOT REPRESENT AN ACTUAL FIELD SURVEY.  MAP REFERENCE: 1. SHEET SS ARCHITECTS OF BURLINGTON, VT, DATED 12/15/03, LAST REVISED 3/17/04.  2. BOUNDARY SURVEY, PORTION OF LANDS OF CITY OF PLATTSBURGH DURKEE STREET PARKING LOT, PREPARED BY C.T. MALE ASSOCIATES, INC., NO. 04-0870, DATED OCTOBER 5, 2004, REVISED 11/30/04.	A					
	A					
	A					
	A					
	A					
	A					
	A					DESIGNED : J.MARX
	A					CHECKED : SB
	A					PROJ. NO: 04-9498
	A					SCALE : AS SHOWN
	A					DATE : OCTOBER 2004