

SCALE: 1" = 2000'



FIGURE 1. SITE LOCATION MAP

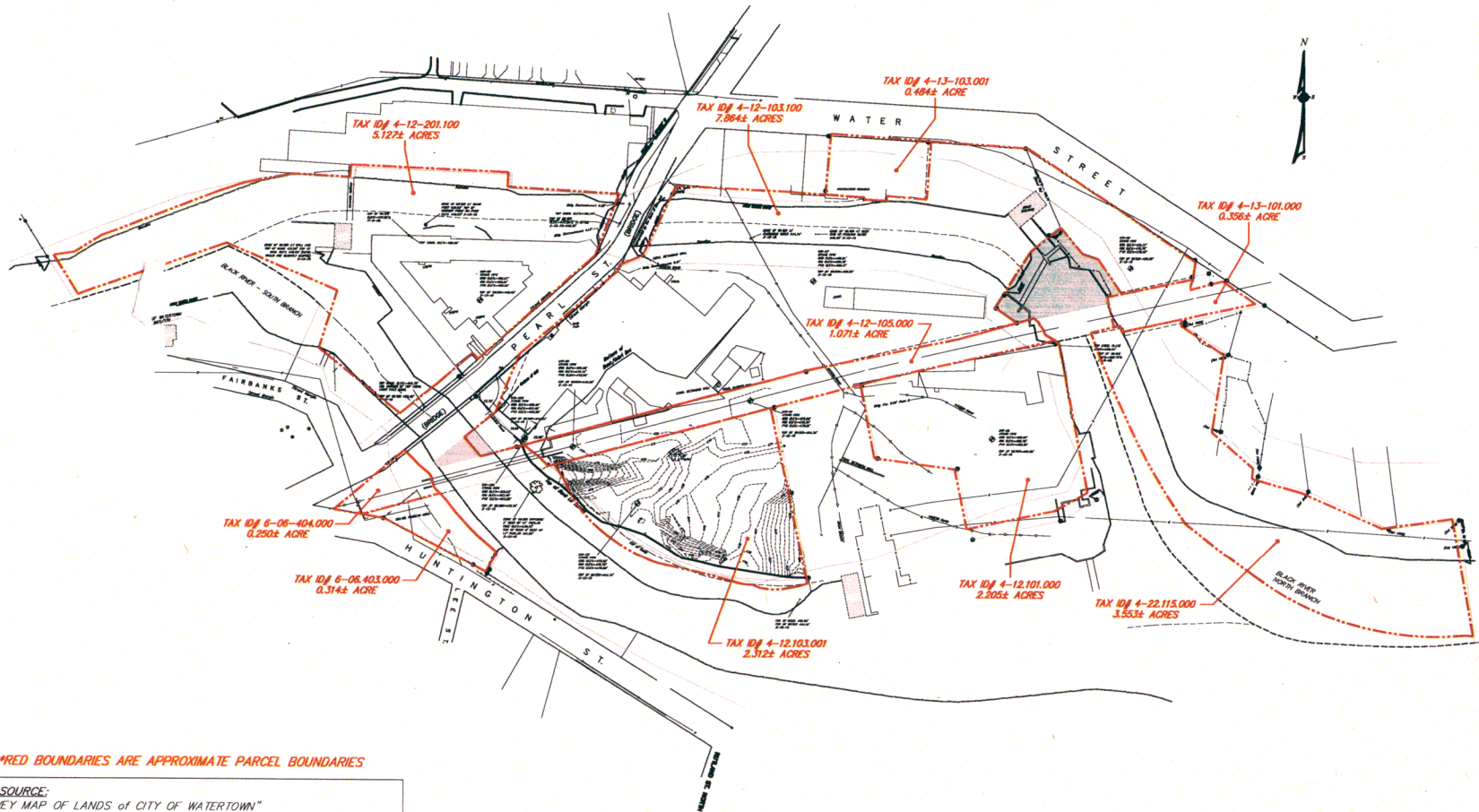
SEWALL'S ISLAND PROJECT
CITY OF WATERTOWN
JEFFERSON COUNTY NEW YORK

DATE: MARCH 2012

SCALE: 1:24,000

DRAWN BY: DLS

MAP SOURCE: WATERTOWN QUADRANGLE
NEW YORK - JEFFERSON COUNTY
7.5 MINUTE SERIES (TOPOGRAPHIC)
1959; PHOTOREVISED 1982



RED BOUNDARIES ARE APPROXIMATE PARCEL BOUNDARIES

MAP SOURCE:
"SURVEY MAP OF LANDS OF CITY OF WATERTOWN"
PEARL STREET, WATER STREET, HUNTINGTON STREET & SEWELL'S ISLAND
OCTOBER 27, 2009
CITY OF WATERTOWN | COUNTY OF JEFFERSON | STATE OF NEW YORK
GYMO ARCHITECTURE, ENGINEERING, LAND SURVEYING, P.C.
220 STERLING STREET, WATERTOWN, NEW YORK 13601

TOPO AND MONITORING WELLS SURVEYED AND ADDED
BY LU ENGINEERS, NOVEMBER 5, 2008.

DATE: MARCH 2012

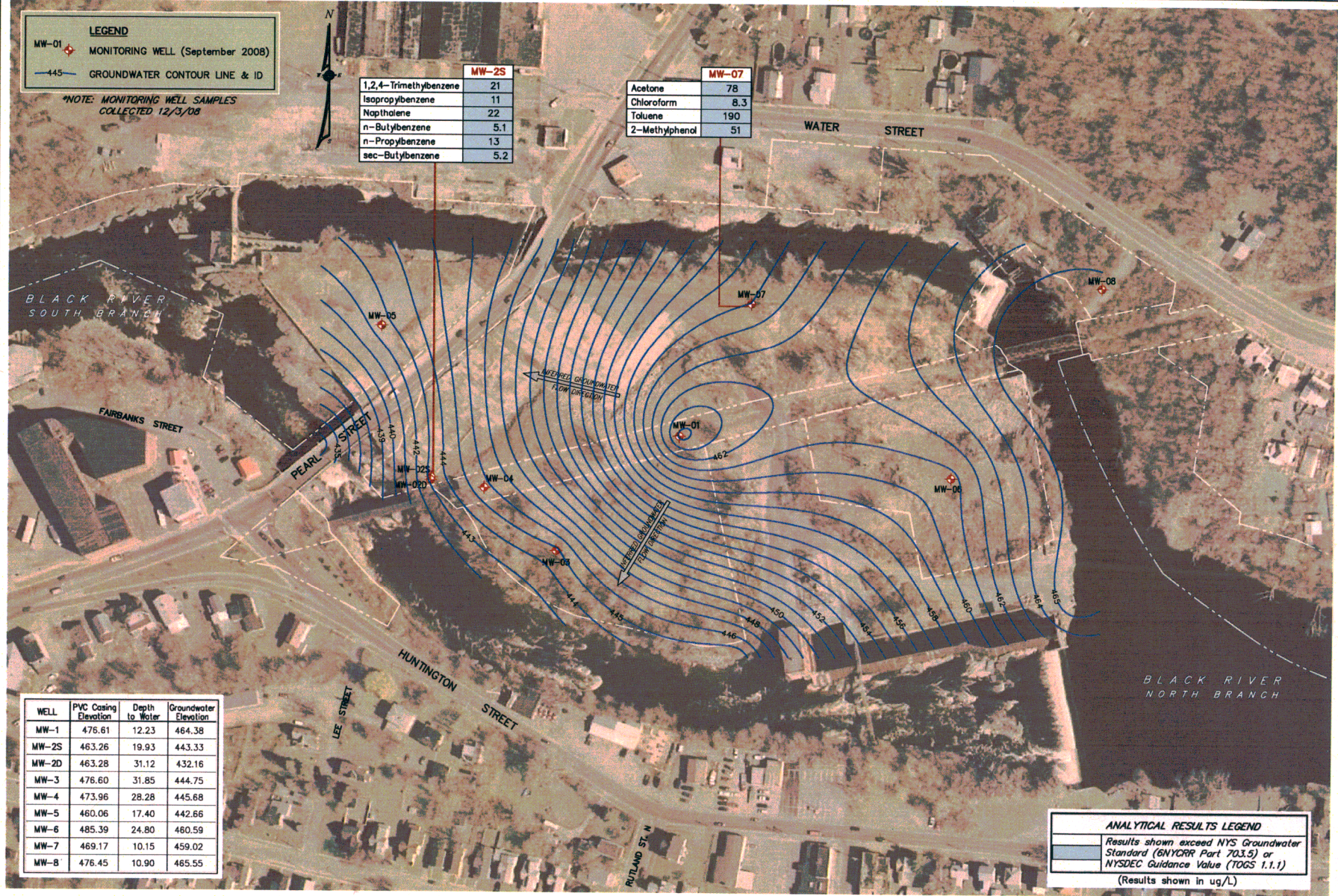
SCALE: 1" = 200'-0"

DESIGNED/DRAWN/CHECKED: LMV/DLS/GLA

MAP SOURCE: "SURVEY MAP OF LANDS OF CITY OF WATERTOWN"
PEARL STREET, WATER STREET, HUNTINGTON STREET & SEWELL'S ISLAND

FIGURE 2. SITE PLAN
CITY OF WATERTOWN
SEWELL'S ISLAND
WATERTOWN, NEW YORK





WELL	PVC Casing Elevation	Depth to Water	Groundwater Elevation
MW-1	476.61	12.23	464.38
MW-2S	463.26	19.93	443.33
MW-2D	463.28	31.12	432.16
MW-3	476.60	31.85	444.75
MW-4	473.96	28.28	445.68
MW-5	460.06	17.40	442.66
MW-6	485.39	24.80	460.59
MW-7	469.17	10.15	459.02
MW-8	476.45	10.90	465.55

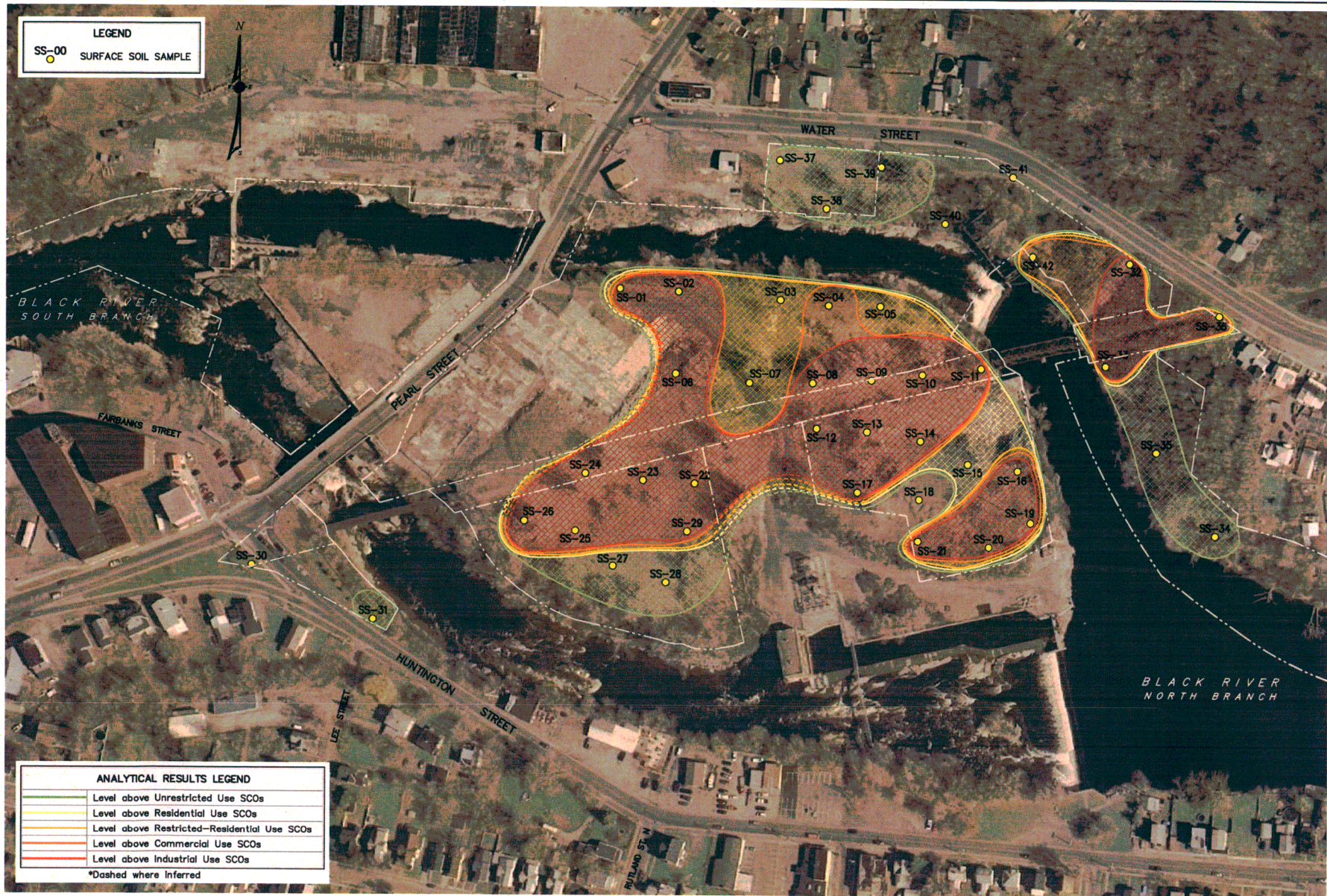


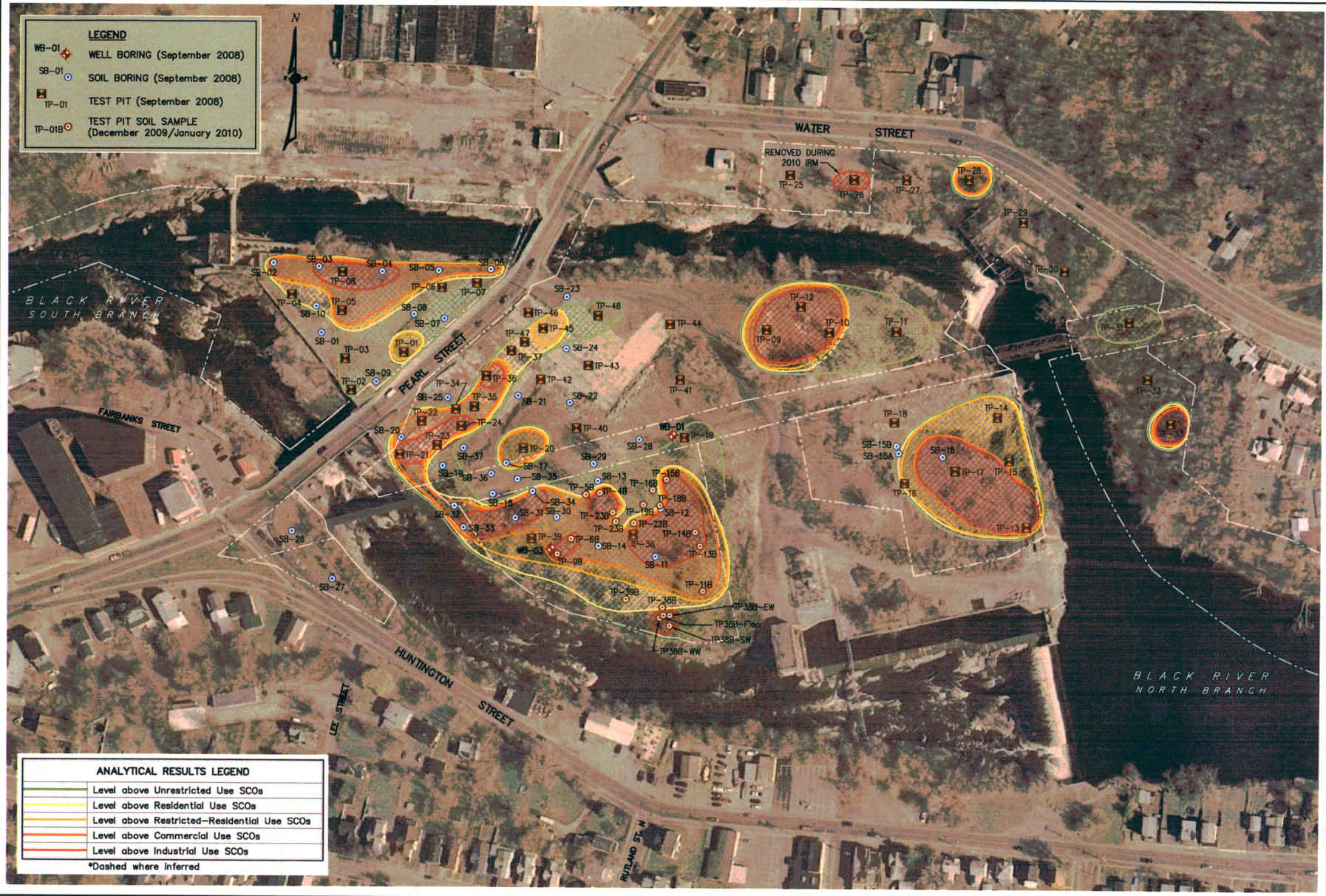
FIGURE 4. SURFACE SOIL SAMPLE RESULTS

CITY OF WATERTOWN
SEWALL'S ISLAND
WATERTOWN, NEW YORK

DATE: MARCH 2012
SCALE: 1" = 50'-0"

DESIGNED/DRAWN/CHECKED: DMK/JLS/GLA
MADE SOURCE: EARTH SYSTEMS
DATA: HIGH RESOLUTION AERIAL PHOTOGRAPHY, 2008







DATE: MARCH 2012
SCALE: 1" = 150'-0"
DESIGNED/DRAWN/CHECKED: CMK/DLS/GLA
NAME: JAMES NEW YORK STATE DATA, ORTHOPHOTOGRAPHY PROGRAM CS DATA - HIGH RESOLUTION, MAY 2008




Figure 6 IRM SITE PLAN
POTENTIAL AREAS OF CONCERN (PAOC)
CITY OF WATERTOWN
SEWALL'S ISLAND
WATERTOWN, NEW YORK



LuEngineers
ENVIRONMENTAL • TRANSPORTATION • CIVIL