

# **CITIZEN PARTICIPATION PLAN**

for

## **Andrews Street Site**

**NYSDEC Site #E828144  
300, 304-308, 320 Andrews Street and 25 Evans Street  
Rochester, New York  
City of Rochester  
Monroe County, New York**

**July 2009**

**Prepared By:**

**City of Rochester  
Department of Environmental Services  
Division of Environmental Quality  
30 Church Street  
Rochester, New York 14614-1278**

# **PREFACE**

## **ENVIRONMENTAL RESTORATION PROJECT**

This Citizen Participation Plan has been developed for the Andrews Street site under New York State's Environmental Restoration Projects Program.

Brownfields are abandoned, idled, or under-used properties where expansion or redevelopment is complicated by real or perceived environmental contamination. They typically are former industrial or commercial properties where operations may have resulted in environmental contamination. They often pose not only environmental, but legal and financial burdens on communities. Left vacant, contaminated sites can diminish the property value of surrounding sites and potentially threaten the economic viability of adjoining properties.

## **RESOURCES AVAILABLE FOR COMMUNITY REDEVELOPMENT**

In an effort to spur the cleanup and redevelopment of brownfields, Governor Pataki proposed, and New Yorkers approved, a \$200 million Environmental Restoration Fund as part of the \$1.75 billion Clean Water/Clean Air Bond Act of 1996 (1996 Bond Act). Under the Program, the State provides grants to municipalities to reimburse up to 90 percent of eligible costs for site investigation and remediation activities. Only New York State municipalities are eligible. The term "municipality" includes counties, cities, towns and villages as well as local public authorities, public benefit corporations, school and supervisory districts and improvement districts. The term also includes a municipality acting in partnership with a community based organization.

Once remediated, the property may then be reused for commercial, industrial, residential, or public use. In addition, the municipality and all successors in title, lessees, and lenders are released from remedial liability for hazardous substances that were on the property prior to the grant. The State indemnifies these same persons in the amount of any settlements/judgments obtained regarding an action relating to hazardous substances that were on the property prior to the grant.

## **SECTION 1: INTRODUCTION**

The City of Rochester and the New York State Department of Environmental Conservation (NYSDEC), in cooperation with the New York State Department of Health (NYSDOH), are committed to informing and involving the public during the process to develop the Site Investigation and Remedial Alternatives Report (SI/RAR) for the Andrews Street site. The Andrews Street site (Site) is located at 300, 304-308, and 320 Andrews Street and 25 Evans Street in the City of Rochester, New York. The Site consists of four parcels owned by the City of Rochester with a combined area of approximately 1.49-acres. The Site is located in a commercial area on the north side of Andrews Street (adjacent to the Inner Loop) near the intersection of North Clinton Avenue in downtown Rochester, New York (See attached Site Location Maps).

The City is in the process of demolishing all of the buildings on the Site and expects to complete demolition in the summer of 2009. Information regarding current structures located on the Andrews Street site is provided below:

- 300 Andrews Street (Tax ID# 106.72-01-86) - one approximate 4,224 square-foot one and two story brick building with a partial basement reportedly constructed in 1925.
- 304-308 Andrews Street (Tax ID# 106.72-01-85) - one approximate 15,425 square-foot one and two story brick and block building with a partial basement reportedly constructed in 1920 with an addition in 1961.
- 320 Andrews Street (Tax ID# 106.72-01-84) - one approximate 8,000 square-foot one story block building with a partial basement reportedly constructed in 1965.
- 25 Evans Street (aka 3-7 Evans St., Tax ID# 106.72-01-87) - one approximate 10,700 square-foot one story slab on-grade block building reportedly constructed in 1950.

The four parcels that comprise the Site have been used for various commercial and industrial uses since the early 1920's including plumbing supply, electrical supply, bakery, printer, commercial bus depot and bus garage, gas station, chemical sales/distribution, dry cleaning equipment distributor, fuel oil contractor, and warehousing.

This Citizen Participation Plan (CPP) has been prepared by the City of Rochester's Department of Environmental Services, Division of Environmental Quality specifically for this Site. Definitions of some common terms and acronyms used in the SI/RAR process may be found in Appendix 1.

The SI is a detailed study to determine how much contamination there is, how far it extends, and potential threats to public health and the environment. Using information developed during the SI, the RAR evaluates possible ways to cleanup the site. NYSDEC describes its preferred remedy in a Proposed Remedial Action Plan (PRAP). After public comment, the selection of a remedy is finalized in a Record of Decision (ROD).

The CPP seeks to assure an open process for the interested and possibly affected public. This includes public officials at all levels, citizen interest groups, commercial interests, individuals in the area of the site, and the media. These parties can be a part of the decision-making process for this Site, and need to be informed about on-site activities. It also identifies locations where these parties can obtain additional information about the remedial program for this Site. Specific opportunities for public and community input into the decision-making process are indicated.

The CPP is a working document. It can be enhanced to accommodate major changes in either public attitude, or in the nature and scope of technical activities at the Site. The activities listed below are not intended to be an all-inclusive list, but an outline of possible activities which may be conducted in coordination with the site investigation and remedial process.

This CPP includes the following information:

- A description of the site history, indicating possible types of contamination, any past studies, and any previous remedial measures that may have occurred at the site;
- A description of the proposed Site Investigation/Remedial Alternatives Report activities;
- Listing of contacts representing the affected and interested public agencies associated with this project;
- Identification of a local repository for information and reports generated during the course of completing the investigation activities; and
- Description of planned citizen participation activities.

## **SECTION 2: SITE LOCATION**

The Andrews Street Site is located at 300, 304-308, and 320 Andrews Street and 25 Evans Street in the City of Rochester, New York. The Site consists of four (4) parcels owned by the City of Rochester with a combined area of approximately 1.49-acres. The Site is located in a commercial area on the north side of Andrews Street (adjacent to the Inner Loop) near the intersection of North Clinton Avenue in downtown Rochester, New York.

## **SECTION 3: SITE HISTORY**

Historic mapping indicates that the Site was used for single-family and multi-family residential dwellings from as early as 1892 through 1920s. Residential use of portions of the Site continued through the 1940s. Portions of the Site have been used for various commercial and industrial uses since the early 1920's including plumbing supply, electrical supply, bakery, printer, commercial bus depot and bus garage, gas station, chemical sales/distribution, dry cleaning equipment distributor, fuel oil contractor, and warehousing. A brief summary of the occupants

of the four parcels since the 1920s is presented below.

<b>Year</b>	<b>300 Andrews Street</b>
1920s -1980s	Bliss Plumbing and Supply
1990s	Anu-Way Design (Printers)
2000s	City of Rochester Main Street team
<b>Year</b>	<b>304-308 Andrews Street</b>
1920s – 1930s	Bakery and residential
1940s – 1970s	Wehle Electric Co. (Supply)
1980s	Nusbaum & Sons (dry cleaning equipment distributor)
1990s	Metropolitan Refining (fuel oil contractors)
2000s	Home Store, Urban League

<b>Year</b>	<b>320 Andrews Street</b>
1920s – 1940s	Morrison Press
1930s – 1940s	Gas station
1940s – 1980s	Greyhound Bus Lines
1990s – 2000s	City of Rochester warehouse

<b>Year</b>	<b>25 Evans Street</b>
1920s – 1940s	Residential
1950s – 1980s	Greyhound Bus Garage
1990s – 2000s	City of Rochester storage

The following investigations have previously been completed at the Site:

- March 1990 – *Site Investigation Report Former Greyhound Terminal and Bus Garage (320 Andrews St. and 25 Evans St.)*.
- October 1990 - *Environmental Site Assessment 304 – 308 Andrews Street*.
- March 1997 - *Phase I Environmental Site Assessment 300 Andrews Street*.
- October 2005 - *Pre-Demolition Asbestos Inspections - 300 Andrews Street, 304 Andrews Street, 308 Andrews Street, 320 Andrews Street, and 25 Evans Street*.
- June 2006 - *Phase I Environmental Site Assessments (four reports total, one for each parcel): 300 Andrews Street, 304-308 Andrews Street, 320 Andrews Street, and 25 Evans Street*.
- October, 2006 - *Phase II Environmental Site Assessment - 300 Andrews Street, 304-308 Andrews Street, 320 Andrews Street, and 25 Evans Street*.

Previous environmental studies performed at the Site have indicated several negative environmental conditions existed or may currently exist at the site including:

- The past use and handling of various types of petroleum and chemicals at the Site including by a distributor of laundry and dry cleaning equipment.
- The past presence of a retail gasoline station on the 320 Andrews Street parcel (gas station demolished and Site redeveloped for bus terminal in early/mid 1960s).
- The presence of two (2) abandoned and closed in place underground storage tanks (USTs - one 5,000-gallon diesel and one 5,000-gallon gasoline) located beneath the concrete floor inside the 25 Evans Street building (former Greyhound bus garage), and one abandoned, out of service 2,000-gallon lube oil aboveground storage tank (AST) located inside the western portion of the 25 Evans Street building.
- The proximity of the Site to an adjacent property which operated a dry cleaning plant for at least 20 years (164 North Clinton Avenue).
- The presence of several volatile organic compounds (VOCs), including Tetrachloroethene, also known as Perchloroethene (PCE), and Trichloroethene (TCE) in soil and groundwater samples from the Site.
- The presence of petroleum related VOCs in soil samples from the Site.

Based on the findings of the previous investigations, additional investigation was recommended to better characterize the extent of contamination on the site.

## **SECTION 4: PLANNED SITE INVESTIGATION**

### **4.1 Scope of the Investigation**

An Investigation Work Plan is being prepared which includes the following major tasks:

- **Utility Survey**
- **Geo-Physical Site Assessment**
- **Subsurface Soil Investigation, including Test Pits/Trenches, Test Borings, and Soil Sampling**
- **Groundwater Quality Evaluation including Monitoring Well Installation and Sampling**
- **Interim Remedial Measure (IRM) including Partial Building Demolition and Source Area Removal of Contaminated Soil**
- **Site Survey**

The goal of this investigation is to delineate the nature and extent of contamination at the Site and use the information to develop appropriate remedial actions for the Site. Specific project

objectives include:

- Characterize and quantify any sources of contamination which may impact on-site and off-site properties.
- Identification of potential routes of exposure and the populations and environmental receptors potentially at risk.
- Characterize the site groundwater and subsurface soil/bedrock conditions.
- Characterize surface water conditions and identify private wells in the area (if applicable).
- Complete an exposure assessment to describe the extent to which the property's contaminants pose an unacceptable risk to the air, land, water, and/or public health.
- Produce a NYSDEC approved Remedial Investigation and Alternatives Analysis for use in clean-up action selection.

#### **A) Utility Survey**

The plans and available records for the Site will be reviewed to identify the location of Site utilities including: storm drains, sanitary sewers, and underground electric, gas and water delivery lines. The conditions of these utilities will be evaluated to determine the need for vapor and/or groundwater sampling and analysis.

#### **B) Geophysical Site Assessment**

The known history of the Site and other preliminary information suggests that USTs have existed at two (2) areas of the Site. A geophysical assessment of the subsurface conditions will be performed to identify any remaining orphan USTs at the site.

Based upon the resulting data from the geophysical study, the locations of potential subsurface anomalies such as UST locations will be determined. The data will be used to narrow the focus of subsequent subsurface investigations, including test pit placement, overburden soil boring locations, and monitoring well installation locations.

#### **C) Subsurface Investigation, including Test Pits/Trenches, Test Borings, and Soil Sampling**

To further evaluate subsurface conditions across the Site several test pits/trenches and test borings will be advanced. The test pits and test borings will allow for evaluation of the nature and extent of contamination associated with currently known areas of concern (AOCs).

Test pits will also be excavated to evaluate the source of any magnetic anomalies identified during the geophysical survey. Subsurface soil conditions at the Site will also be evaluated by advancing soil borings in known or suspected areas of concern using a conventional rotary drill rig and/or direct push techniques (i.e., Geoprobe). It is anticipated that test borings will be advanced across the site to provide maximum coverage. Rotary borings will be advanced using a conventional drill rig until bedrock is reached. Subsurface soil samples will be collected

continuously via split-spoon or using direct-push techniques and characterized according to the Unified Soil Classification System. Field headspace measurements of volatile organic compounds from soil split-spoon or macro-core samples will be performed using a portable photoionization detector meter. The soil samples will be analyzed for volatile organic compounds (VOCs), semi-volatile organic compounds (SVOCs), metals, pesticides, and polychlorinated biphenyls (PCBs). It is anticipated that soil samples from each location will be collected for submission for laboratory analysis for constituents of concern. A drilling log will be kept documenting soil characteristics, headspace concentrations, water table depth, sample recovery, and other pertinent information.

#### **D) Groundwater Quality Evaluation, including Monitoring Well Installation and Sampling**

Groundwater monitoring wells will be installed in locations of suspected contamination to evaluate groundwater quality at the Site and to evaluate potential impacts to off-site receptors. There are three (3) pre-existing monitoring wells currently present at the Site. A total of two (2) complete groundwater sampling events will be performed throughout the site investigation in order to determine the local groundwater flow conditions and to define the horizontal and vertical extent of groundwater contamination at the site. The groundwater samples will be analyzed for VOCs, SVOCs, metals, pesticides, and PCBs.

#### **E) Site Survey**

Monitoring well locations will be surveyed to determine each monitoring well location. Groundwater depths, laboratory analytical data, and site survey data will be used to prepare a groundwater flow model illustrating depth to groundwater and local groundwater flow conditions as well as to describe the location of contaminant concentrations.

#### **F) Interim Remedial Measure (IRM)**

Subsequent to the removal of asbestos containing material (ACM), the buildings at the Site will be demolished in accordance with City of Rochester Municipal Code, Chapter 39 Article III and Chapter 47A, Demolition Regulations. The concrete slab floor and the exterior asphalt driveway at a portion of the 304-308 Andrews Street building (i.e., the “barn/garage” area and adjoining single-story office space on the east side of the building, and the one-story garage between 304-308 Andrews and 25 Evans Street) will be left in place. Any evidence of floor drains, lift pits, sumps, or other sub-slab features will be noted and the areas will be left undisturbed for subsurface characterization.

Subsequent to the building demolition and soil boring/monitoring well program previously described, it is anticipated that a source area removal of PCE/VOC contaminated soil will be performed. This soil removal IRM will be centered near the “barn” portion of the 304-308 Andrews Street parcel (i.e., once occupied by a dry-cleaning equipment distributor). The contaminated soil will be removed using a conventional tracked excavator, characterized, and disposed of off-site at a permitted landfill.

The site investigation work plan provides additional details about the investigation. Copies can be reviewed at the repositories listed in Section 5.2 of this Citizen Participation Plan.



## **4.2 Project Schedule**

The site investigation activities are expected to begin at the Site by July 2009. The investigation activities will take approximately eight (8) weeks to complete. A draft SI report should be submitted to the NYSDEC and the NYSDOH by the end of 2009. The schedule for IRM work plans and reports and the RA Report will be based on the results of the investigation sampling.

## **SECTION 5: CITIZEN PARTICIPATION ACTIVITIES**

It is the expressed intent of the City of Rochester and the NYSDEC to provide information to the public in a timely, complete, and accurate manner. Towards this end, the City of Rochester has compiled a list of individuals to whom the public can address specific requests for information. These contacts are both local and state public officials and are knowledgeable of the proposed investigative activities. This list of contacts is provided in Table 1 in Section 5.1, below.

A local document repository has been established at the Rundell Memorial Library located at 115 South Avenue in the City of Rochester. In addition, a document repository has been established at the NYSDEC Region 8 office located at 6274 East Avon-Lima Road in Avon, New York. Repositories of information are identified in Section 5.2 below. A copy of the documents relevant to the SI/RAR, including the SI/RAR Work Plan, will be placed in the document repositories to allow interested citizens and groups to review these documents.

A Fact Sheet detailing the availability of the SI/RAR Work Plan will be sent out to the local residents and other interested parties on the mailing list. The mailing list is presented in the Appendix 2. This Fact Sheet mailing will include information about the document repositories, the name and address of the City of Rochester Representative, NYSDEC Citizen Participation Specialist, NYSDEC Project Manager and NYSDOH contact. Parties who express interest in being placed on or removed from the mailing list will be added or removed as requested.

The Fact Sheet will also serve as an invitation for the public to provide input on the SI/RAR Work Plan via written or oral comments.

Additional citizen participation activities, such as a public meeting and/or Fact Sheet after the site investigation is completed will be added as appropriate.

Once the SI/RA Report has been accepted, the NYSDEC will issue a Proposed Remedial Action Plan (PRAP) for the Site. This plan will use the information contained in the SI/RAR and evaluate several alternatives to address the contamination at the Site. This plan will then propose a course of remedial action for the Site.

A public meeting will then be held to present the SI/RAR and the PRAP to the public. This presentation will be followed by a formal question and answer period. The PRAP will also have a 45-day comment period, during which written comments and questions can be submitted.

After the comment period, a Record of Decision (ROD) will be issued by the NYSDEC identifying the remedy selected for the Site and the basis for the remedy selection. As part of the ROD, a responsiveness summary will be prepared. This responsiveness summary will include all relevant and significant questions and comments received on the PRAP and the NYSDEC/NYSDOH responses to this input.

The ROD and the PRAP, and all NYSDEC-approved reports, plans, and fact sheets on this project will be placed in the document repositories for public review. These documents may be distributed more widely, such as to interested local groups, if warranted.

**5.1 Public Agency Contacts**

The City of Rochester has identified individuals knowledgeable of the proposed remedial investigation activities. These individuals are identified in Table 1 below.

**Table 1: Public Agency Contacts**

<b>City of Rochester Contacts</b>		
JOSEPH BIONDOLILLO PROJECT MANAGER	DIV OF ENVIRONMENTAL QUALITY CITY OF ROCHESTER CITY HALL ROOM 300B ROCHESTER, NEW YORK 14614	585-428-6649
<b>NYS Department of Environmental Conservation</b>		
CHARLOTTE THEOBALD NYSDEC PROJECT MANAGER (TECHNICAL ASSISTANCE)	NYSDEC REGION 8 OFFICE 6274 EAST AVON-LIMA ROAD AVON, NEW YORK 14414-9516	585-226-5354
BARTHOLOMEW PUTZIG NYSDEC DER REGIONAL ENGINEER (TECHNICAL ASSISTANCE)	NYSDEC REGION 8 OFFICE 6274 EAST AVON-LIMA ROAD AVON, NEW YORK 14414-9516	585-226-5349
LISA SILVESTRI NYSDEC CITIZEN PARTICIPATION SPECIALIST	NYSDEC REGION 8 OFFICE 6274 EAST AVON-LIMA ROAD AVON, NEW YORK 14414-9516	585-226-5326
<b>New York State Department of Health</b>		
MELISSA MENETTI NYSDOH PROJECT MANAGER (TECHNICAL ASSISTANCE)	NYSDOH BUREAU OF ENVIRONMENTAL EXPOSURE FLANIGAN SQUARE ROOM 300 547 RIVER ST TROY NEW YORK 12180-2216	518-402-7860
<b>Monroe County Department of Health</b>		
JEFF KOSMALA (TECHNICAL ASSISTANCE)	MCHD 111 WESTFALL ROAD ROOM 938 ROCHESTER NY 14620	585-753-5470

## 5.2 Document Repositories

The public is encouraged to review the documents related to the Site which are available for public review at the following locations:

<p>NYSDEC Region 8 Office 6274 East Avon-Lima Road Avon, New York 14414-9516</p> <p>Attn: Charlotte Theobald or Lisa Silvestri Phone: 585-226-2466</p> <p>Hours: M-F, 8:30am - 4:45pm</p> <p>Please call for an appointment.</p>		<p>Rochester Public Library Rundell Memorial Library 115 South Avenue Rochester, New York 14604</p> <p>Attn: Leatrice Brantley Phone: 585-428-8395</p> <p>Hours: M&amp;W: 10:00 am - 7:00 pm T, Th, F: 12:00 pm - 6:00 pm Sat: 12:00 pm - 4:00 pm</p>
--	--	---

## 5.3 Mailing List

The attached mailing list includes owners of properties located within the immediate vicinity of the Site. The mailing list of property owners is presented in Appendix 2. The City of Rochester will produce and distribute Fact Sheets providing residents with timely information on project status, including notifications of upcoming activities on-site (e.g., fieldwork) or off-site (e.g., public availability sessions). Included in all Fact Sheets will be the list of individuals to be contacted by the public for additional information (see Table 1, above). In addition to property owners, Fact Sheets will be mailed to the elected officials/ representatives, environmental groups, and media listed in Tables 2 and 3 below.

**Table 2: Elected Officials/Representatives and Environmental Groups**

Elected Officials / Public Agency Representatives		
<p>THE HONORABLE KIRSTEN GILLIBRAND UNITED STATES SENATE 100 STATE STREET ROOM 3280 ROCHESTER, NEW YORK 14614</p>	<p>THE HONORABLE CHARLES SCHUMER UNITED STATES SENATE FEDERAL BUILDING 100 STATE ST ROCHESTER, NEWYORK 14614</p>	<p>THE HONORABLE LOUISE M SLAUGHTER US HOUSE OF REPRESENTATIVES 3110 FEDERAL BUILDING 100 STATE STREET ROCHESTER, NEW YORK 14614</p>
<p>DAVID GANTT NYS ASSEMBLY 74 UNIVERSITY AVENUE ROCHESTER, NEW YORK 14605</p>	<p>THE HONORABLE JOSEPH E ROBACH NYS SENATE 2300 WEST RIDGE ROAD ROCHESTER, NEW YORK 14626</p>	<p>MAYOR ROBERT DUFFY CITY HALL 30 CHURCH STREET ROCHESTER, NEW YORK 14614</p>
<p>MAGGIE BROOKS MONROE COUNTY EXECUTIVE COUNTY OFFICE BUILDING ROOM 110 39 WEST MAIN STREET ROCHESTER, NEW YORK 14614-1476</p>	<p>GLADYS SANTIAGO CITY COUNCIL OFFICE CITY HALL 30 CHURCH STREET ROOM 301 ROCHESTER, NEW YORK 14614-1265</p>	<p>WILLIAM PRITCHARD CITY COUNCIL OFFICE CITY HALL 30 CHURCH STREET ROOM 301 ROCHESTER, NEW YORK 14614-1265</p>

MONROE COUNTY SHERIFF PATRICK O'FLYNN MONROE COUNTY PUBLIC SAFETY BUILDING CIVIC CENTER PLAZA 130 SOUTH PLYMOUTH AVENUE ROCHESTER, NEW YORK 14614	WAYNE ZYRA MONROE COUNTY CHAIRPERSON 407 COUNTY OFFICE BUILDING 39 WEST MAIN STREET ROCHESTER, NEW YORK 14614-1476	ROCHESTER FIRE CHIEF FLOYD MADISON ROCHESTER FIRE & RESCUE DEPT 185 EXCHANGE BOULEVARD SUITE 665 ROCHESTER, NEW YORK 14614-2277
OFFICE OF THE POLICE CHIEF CIVIC CENTER PLAZA 185 EXCHANGE BLVD ROCHESTER, NY 14614	LOUISE HARTSHORN EMC - MONROE COUNTY PO BOX 92832 111 WESTFALL ROAD ROCHESTER, NY 14692	MARY LOUIS MEISENZAHL MONROE COUNTY EMERGENCY MANAGEMENT SERVICES & PREPAREDNESS 1190 SCOTTSVILLE ROAD SUITE 200 ROCHESTER, NEW YORK 14624
CHARLIE KNAUF MONROE COUNTY WATER QUALITY COORDINATING COMMITTEE 111 WESTFALL ROAD ROOM 976 ROCHESTER, NEW YORK 14620	BONNIE PEDRICK-COLES OR CURRENT DIRECTOR MONROE COUNTY PLANNING DEPARTMENT 8100 CITY PLACE 50 WEST MAIN STREET ROCHESTER, NEW YORK 14614	MONROE COUNTY INDUSTRIAL DEVELOPMENT AGENCY EXECUTIVE DIRECTOR 8100 CITY PLACE 50 WEST MAIN STREET ROCHESTER, NEW YORK 14614
HON GLADYS SANTIAGO CITY COUNCIL PRESIDENT 1850 CULVER ROAD ROCHESTER, NEW YORK 14609	MOLLY CLIFFORD NET OFFICE CITY HALL 30 CHURCH STREET ROCHESTER, NEW YORK 14614	MELISSA MENETTI NYSDOH FLANIGAN SQUARE ROOM 300 547 RIVER STREET TROY, NEW YORK 12180-2216
LISA SILVESTRI NYSDEC REGION 8 OFFICE 6274 EAST AVON-LIMA ROAD AVON, NEW YORK 14414-9516	CAPTAIN MIKE VAN DURME NYSDEC REGION 8 OFFICE 6274 EAST AVON-LIMA ROAD AVON, NEW YORK 14414-9516	LINDA VERA NYSDEC REGION 8 OFFICE 6274 EAST AVON-LIMA ROAD AVON, NEW YORK 14414-9519
HONORABLE ELAINE SPAULL CITY COUNCIL MEMBER 42 WESTMINSTER ROAD ROCHESTER, NEW YOEEK 14607	ART IENTILUCCI ZONING DIRECTOR CITY OF ROCHESTER 30 CHURCH STREET ROOM 125B ROCHESTER, NEW YORK 14614	CHUCK THOMAS DIRECTOR CITY OF ROCHESTER PLANNING DEPARTMENT 30 CHURCH STREET ROOM 100A ROCHESTER, NEW YORK 14614
GARY WALKER DIRECTOR CITY OF ROCHESTER COMMUNICATIONS DEPARTMENT 30 CHURCH STREET ROOM 202A ROCHESTER, NEW YORK 14614		
<b>Environmental Groups/Community Organizations</b>		
CURRENT DIRECTOR CENTER FOR ENVIRONMENTAL INFORMATION 55 ST. PAUL STREET ROCHESTER, NEW YORK 14604-1314	KELLY TRAVERS-MAIN CITIZENS' ENVIRONMENTAL COALITION 33 CENTRAL AVENUE, 3RD FLOOR ALBANY, NEW YORK 12210	ROCHESTER COMMITTEE SCIENTIFIC INFORMATION CPU 276 766 RIVER CAMPUS STATION ROCHESTER, NEW YORK 14627
WILLIAM LARSEN PE ROCHESTER INSTITUTE OF TECHNOLOGY JAMES BOOTH BUILDING 78 LOMB MEMORIAL DRIVE ROCHESTER, NEW YORK 14623		

## **5.4 Media Announcements**

The City of Rochester and the NYSDEC will make every reasonable effort to ensure that upcoming public meetings are announced in several media, for the purpose of encouraging

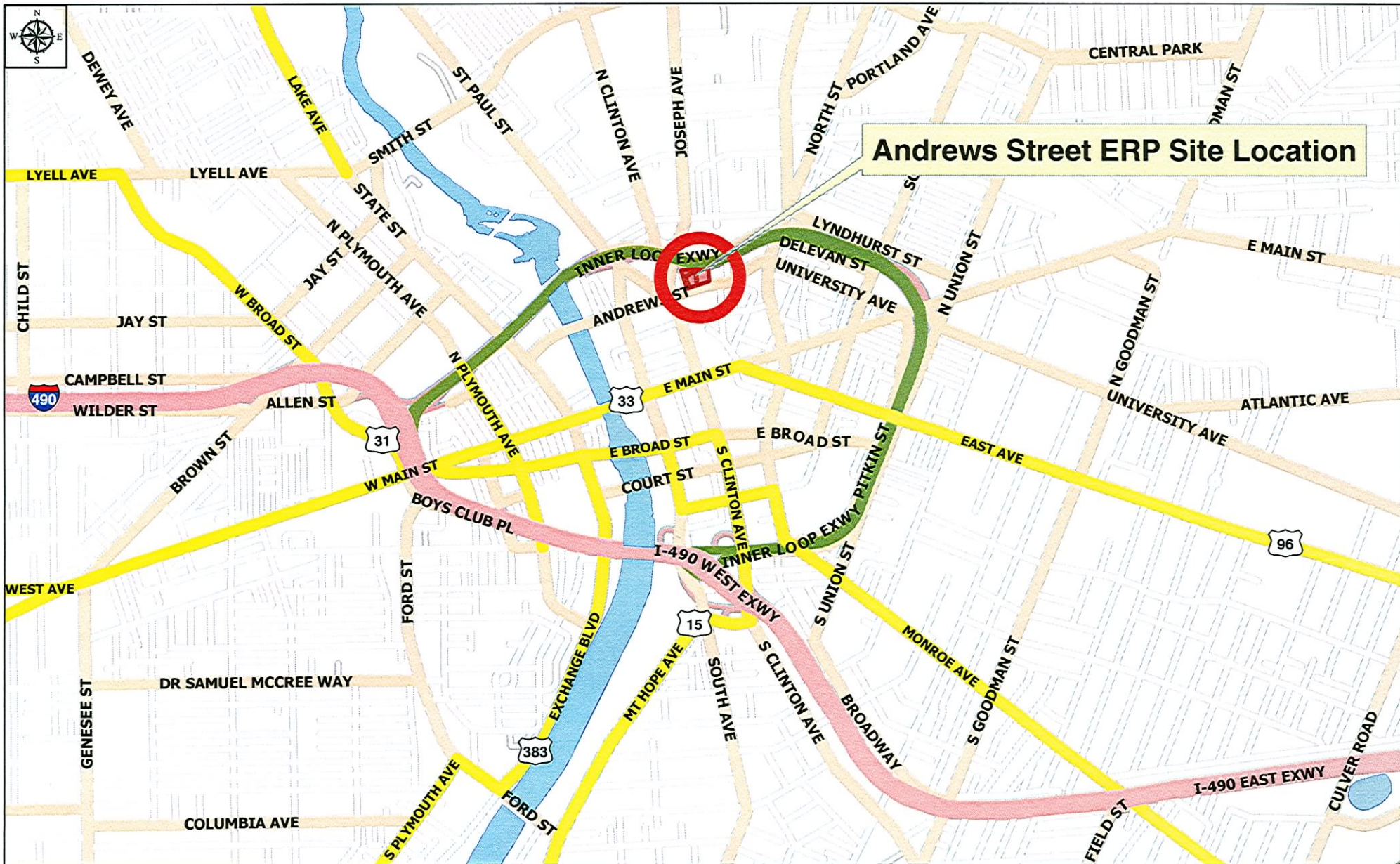
public participation and comment. Announcements will be initially submitted to visual and sound media for broadcast as “Public Service Announcements” at least 14 calendar days prior to the day of the public meeting.

The media locations identified in Table 3 represent the minimum media where announcements will be placed.

**Table 3: Media**

NEWS DIRECTOR WROC-TV 201 HUMBOLDT STREET ROCHESTER, NEW YORK 14610	ASSIGNMENT DESK R NEWS CHANNEL 9 71 MT HOPE AVENUE ROCHESTER, NEW YORK 14620	ASSIGNMENT EDITOR WHEC-TV 10 191 EAST AVENUE ROCHESTER, NEW YORK 14604
NEWS EDITOR CITY NEWSPAPER 250 NORTH GOODMAN STREET ROCHESTER, NEW YORK 14607	NEWS DIRECTOR WXXI-TV 21 280 STATE STREET PO BOX 30021 ROCHESTER, NEW YORK 14614	ASSIGNMENT EDITOR WHAM-TV 13 4225 WEST HENRIETTA ROAD ROCHESTER, NEW YORK 14623
NEWS DIRECTOR 1180 WHAM 1700 HSBC PLAZA 100 CHESTNUT STREET ROCHESTER, NEW YORK 14604	BUD LOWELL OR CURRENT NEWS DIRECTOR WXXI-AM 280 STATE STREET PO BOX 30021 ROCHESTER, NEW YORK 14614	METRO DESK DEMOCRAT & CHRONICLE 55 EXCHANGE BOULEVARD ROCHESTER, NEW YORK 14614-2001

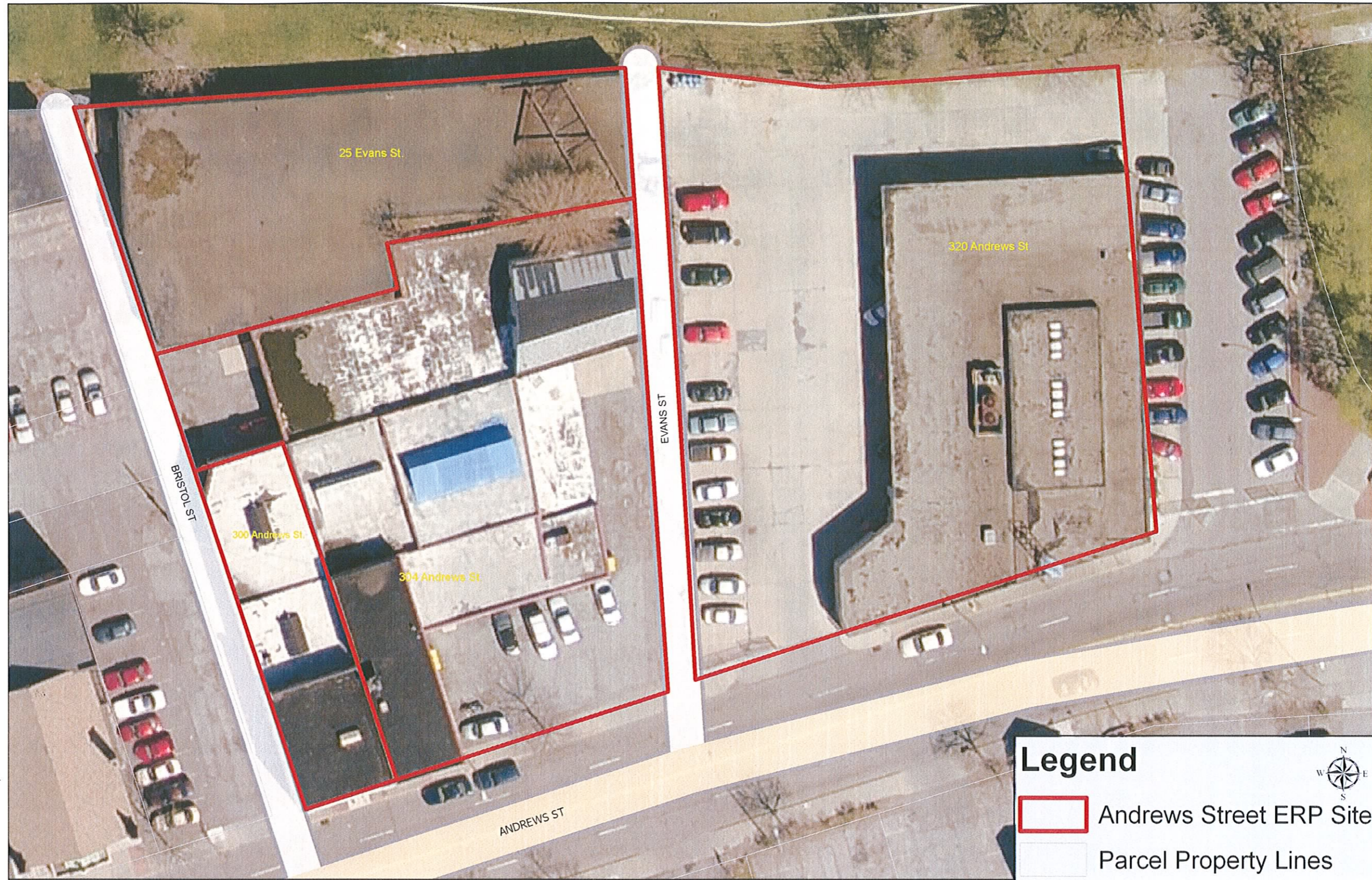
Site Location Map  
Andrews Street ERP Site (E828144)  
Rochester, New York



0 0.25 0.5  
Miles



# Andrews Street ERP Site (E828144) Rochester, New York



## Legend

-  Andrews Street ERP Site
-  Parcel Property Lines



0 20 40 80 Feet



# APPENDIX 1

## Environmental Restoration Program Glossary and Acronyms

---

### GLOSSARY

This glossary defines terms associated with New York's citizen participation program, and important elements of the Brownfield program. Words in **bold** in the definitions are defined elsewhere in the glossary.

**Administrative Record** Part of a site's **Record of Decision** which lists and defines documents used in the development of NYSDEC's decision about selection of a remedial action.

**Availability Session** A scheduled gathering of program staff and members of the public in a casual setting, without a formal presentation or agenda but usually focusing on a specific aspect of a site's remedial process.

**Citizen Participation** A program of planning and activities to encourage communication among people affected by or interested in Brownfield sites and the government agencies responsible for investigating and remediating them.

**Citizen Participation Plan** A document which must be developed at a site's **Site Investigation** stage. A CP Plan describes the citizen participation activities that will be conducted during a site's remedial process.

**Citizen Participation Specialist** A staff member from an NYSDEC central office or regional office who has specialized training and experience to assist a **project manager** and other staff to plan, conduct and evaluate a site-specific citizen participation program.

**Comment Period** A time period for the public to review and comment about various documents and DER actions. For example, a 45-day comment period is provided when DER issues a **Proposed Remedial Action Plan (PRAP)**.



**Contact List** Names, addresses and/or telephone numbers of individuals, groups, organizations, government officials and media affected by or interested in a particular Brownfield site. The size of a contact list and the categories included are influenced by population density, degree of interest in a site, the stage of the remedial process and other factors. It is an important tool needed to conduct outreach activities.

**Division of Environmental Remediation** A major program unit within the New York State Department of Environmental Conservation created to manage the hazardous waste site remedial program, the Brownfield program, and the Voluntary Cleanup program. Staff include: engineers, geologists, chemists, attorneys, citizen participation specialists, environmental program specialists and support staff.

**Document Repository** A file of documents pertaining to a site's remedial and citizen participation programs which is made available for public review. The file generally is maintained in a public building near the Brownfield site to provide access at times and a location convenient to the public.

**Fact Sheet** A written discussion about part or all of a site's remedial process prepared and provided by DER to the public. A fact sheet may focus on: a particular element of the site's remedial program; opportunities for public involvement; availability of a report or other information, or announcement of a **public meeting** or **comment period**. A fact sheet may be mailed to all or part of a site's **contact list**, distributed at meetings, placed in a **document repository** and/or sent on an "as requested" basis.

**Interim Remedial Measure (IRM)** A discrete action which can be conducted at a site relatively quickly to reduce the risk to people's health and the environment from a well-defined contamination problem. An IRM can involve removing contaminated soil and drums, providing alternative water supplies or securing a site to prevent access.

**New York State Department of Health** Agency within the executive branch of New York State government which: performs health-related inspections at suspected contaminated sites; conducts health assessments to determine potential risk from environmental exposure; reviews Exposure Assessments prepared during the **Site Investigation/Remedial Alternatives Report**; conducts health-related community outreach around sites; and reviews remedial actions to assure that public health concerns are adequately addressed.

**Operable Unit** A discrete part of an entire site that produces a release, threat of release, or pathway of exposure. An Operable Unit can receive specific investigation, and a particular remedy may be proposed. A **Record of Decision** is prepared for each Operable Unit.

**Operation and Maintenance** A period in which remedial action may be conducted following construction at a site (for example, operation of a “pump and treat” system), or which is performed after a remedial action to assure its continued effectiveness and protection of people’s health and the environment. Activities can include site inspections, well monitoring and other sampling.

**Project Manager** An NYSDEC staff member within the **Division of Environmental Remediation** (usually an engineer, geologist or hydro geologist) responsible for the day-to-day administration of remedial activities at, and ultimate disposition of, an Environmental Restoration site. The Project Manager works with legal, health, **citizen participation** and other staff to accomplish site-related goals and objectives.

**Proposed Remedial Action Plan (PRAP)** An analysis by DER of each alternative considered for the remediation of an Environmental Restoration site and a rationale for selection of the alternative it recommends. The PRAP is created based on information developed during the **Site Investigation/Remedial Alternatives Report**. The PRAP is reviewed by the public and other state agencies.

**Public Meeting** A scheduled gathering of **Division of Environmental Remediation** staff with the affected/interested public to give and receive information, ask questions and discuss concerns about a site’s remedial program. Staff from other NYSDEC divisions, legal and health staff, and staff from consultants and a responsible party often also attend. A public meeting, unlike an **availability session**, generally features a formal presentation and a detailed agenda.

**Record of Decision (ROD)** A document which provides definitive record of the cleanup alternative that will be used to remediate an Environmental Restoration site. The ROD is based on information and analyses developed during the **Site Investigation/Remedial Alternatives Report** and public comment.

**Remedial Construction** The physical development, assembly and implementation of the remedial alternative selected to remediate a site. Construction follows the **Remedial Design** stage of a site’s remedial program.

**Remedial Design** The process following finalization of a **Record of Decision** in which plans and specifications are developed for the **Remedial Construction** of the alternative selected to remediate a site.

**Site Investigation/Remedial Alternatives Report (SI/RAR)** The SI fully defines and characterizes the type and extent of contamination at the site. The RAR, which may be conducted during or after the SI, uses information developed during the SI to develop alternative remedial actions to eliminate or reduce the threat of contamination to public health and the environment.

**Responsiveness Summary** A written summary of major oral and written comments received by DER during a **comment period** about key elements of a site's remedial program, such as a **Proposed Remedial Action Plan**, and DER's response to those comments.

## ACRONYMS

ACM	Asbestos Containing Material
AOCs	Areas of Concern
ASTs	Aboveground Storage Tanks
CPP	Citizen Participation Plan
IRM	Interim Remedial Measure
NYSDEC	New York State Department of Environmental Conservation
NYSDOH	New York State Department of Health
PCBs	Polychlorinated biphenyls
PCE	Perchloroethene
PRAP	Proposed Remedial Action Plan
RA	Remedial Alternatives
ROD	Record of Decision
SI	Site Investigation
SI/RAR	Site Investigation/Remedial Alternatives Report
SVOCs	Semi-Volatile Organic Compounds
TCE	Trichloroethene
USTs	Underground Storage Tanks
VOCs	Volatile Organic Compounds

# **APPENDIX 2**

## **MAILING LIST**

**ADJACENT PROPERTIES ARE INCLUDED IN MAILINGS BUT  
HAVE BEEN EXCLUDED FROM THE LISTING IN THIS  
DOCUMENT AS CONFIDENTIAL INFORMATION**

**MEDIA**

NEWS DIRECTOR  
WROC-TV  
201 HUMBOLDT STREET  
ROCHESTER, NEW YORK 14610

ASSIGNMENT DESK  
R NEWS CHANNEL 9  
71 MT HOPE AVENUE  
ROCHESTER, NEW YORK 14620

ASSIGNMENT EDITOR  
WHEC-TV 10  
191 EAST AVENUE  
ROCHESTER, NEW YORK 14604

ASSIGNMENT EDITOR  
WHAM-TV 13  
4225 WEST HENRIETTA ROAD  
ROCHESTER, NEW YORK 14623

NEWS DIRECTOR  
WXXI-TV 21  
280 STATE STREET  
PO BOX 30021  
ROCHESTER, NEW YORK 14614

NEWS EDITOR  
CITY NEWSPAPER  
250 NORTH GOODMAN STREET  
ROCHESTER, NEW YORK 14607

NEWS DIRECTOR  
1180 WHAM  
1700 HSBC PLAZA  
100 CHESTNUT STREET  
ROCHESTER, NEW YORK 14604

BUD LOWELL or CURRENT NEWS DIRECTOR  
WXXI-AM  
280 STATE STREET  
PO BOX 30021  
ROCHESTER, NEW YORK 14614

METRO DESK  
DEMOCRAT & CHRONICLE  
55 EXCHANGE BOULEVARD  
ROCHESTER, NEW YORK 14614-2001

**ELECTED OFFICIALS  
MONROE CO. OFFICIALS  
CITY OF ROCHESTER OFFICIALS**

HONORABLE LOUISE M SLAUGHTER  
US HOUSE OF REPRESENTATIVES  
3110 FEDERAL BUILDING  
100 STATE STREET  
ROCHESTER, NEW YORK 14614

HONORABLE KIRSTEN GILLIBRAND  
UNITED STATES SENATE  
100 STATE STREET  
ROOM 3280  
ROCHESTER, NEW YORK 14614

HONORABLE CHARLES SCHUMER  
UNITED STATES SENATE  
FEDERAL BUILDING  
100 STATE STREET  
ROCHESTER, NEW YORK 14614

HONORABLE DAVID GANTT  
NYS ASSEMBLY  
74 UNIVERSITY AVENUE  
ROCHESTER, NEW YORK 14605

HONORABLE JOSEPH E ROBACH  
NYS SENATE  
2300 WEST RIDGE ROAD  
ROCHESTER, NEW YORK 14626

HONORABLE GLADYS SANTIAGO  
CITY COUNCIL OFFICE  
CITY HALL  
ROOM 301 A  
30 CHURCH STREET  
ROCHESTER, NEW YORK 14614-1265

HONORABLE ELAINE SPAULL  
CITY COUNCIL MEMBER  
42 WESTMINSTER ROAD  
ROCHESTER, NEW YORK 14607

MAYOR ROBERT DUFFY  
CITY HALL  
30 CHURCH STREET  
ROCHESTER, NEW YORK 14614

MONROE COUNTY SHERIFF PATRICK O'FLYNN  
MONROE COUNTY PUBLIC SAFETY BUILDING  
CIVIC CENTER PLAZA  
130 SOUTH PLYMOUTH AVENUE  
ROCHESTER, NEW YORK 14614

ROCHESTER FIRE CHIEF FLOYD MADISON  
ROCHESTER FIRE & RESCUE DEPARTMENT  
185 EXCHANGE BOULEVARD  
SUITE 665  
ROCHESTER, NEW YORK 14614-2277

FLOYD MADISON  
CITY OF ROCHESTER POLICE CHIEF  
CIVIC CENTER PLAZA  
185 EXCHANGE BOULEVARD  
ROCHESTER, NEW YORK 14614

CHERYL DINOLFO  
MONROE COUNTY CLERK  
101 COUNTY OFFICE BUILDING  
39 WEST MAIN STREET  
ROCHESTER, NEW YORK 14614

MARY LOUIS MEISENZ AHL  
MONROE COUNTY  
EMERGENCY MANAGEMENT SERVICES & PREPAREDNESS  
1190 SCOTTSVILLE ROAD  
SUITE 200  
ROCHESTER, NEW YORK 14624

MAGGIE BROOKS  
MONROE COUNTY EXECUTIVE  
COUNTY OFFICE BUILDING  
ROOM 110  
39 WEST MAIN STREET  
ROCHESTER, NEW YORK 14614-1476

LOUISE HARTSHORN  
EMC - MONROE COUNTY  
PO BOX 92832  
111 WESTFALL ROAD  
ROCHESTER, NEW YORK 14692

JEFF KOSMALA  
MONROE COUNTY HEALTH DEPARTMENT  
111 WESTFALL ROAD  
ROOM 938  
ROCHESTER, NEW YORK 14692-8932

MONROE COUNTY  
INDUSTRIAL DEVELOPMENT AGENCY  
EXECUTIVE DIRECTOR  
8100 CITY PLACE  
50 WEST MAIN STREET  
ROCHESTER, NEW YORK 14614

BONNIE PEDRICK-COLES OR CURRENT DIR  
PLANNING DEPT MONROE COUNTY  
8100 CITY PLACE  
50 WEST MAIN STREET  
ROCHESTER, NEW YORK 14614

WAYNE ZYRA  
MONROE COUNTY LEGISLATURE CHAIRPERSON  
407 COUNTY OFFICE BUILDING  
39 WEST MAIN STREET  
ROCHESTER, NEW YORK 14614-1476

CHARLIE KNAUF  
MONROE COUNTY WATER QUALITY  
COORDINATING COMMITTEE  
111 WESTFALL ROAD  
ROOM 976  
ROCHESTER, NEW YORK 14620

MOLLY CLIFFORD  
NET OFFICE  
CITY HALL  
30 CHURCH STREET  
ROCHESTER, NEW YORK 14614

ROCHESTER CITY CLERK  
DANIEL B KARIN  
30 CHURCH STREET  
ROCHESTER, NEW YORK 14614

ART IENTILUCCI, DIRECTOR  
CITY OF ROCHESTER ZONING DEPARTMENT  
30 CHURCH STREET  
ROOM 125B  
ROCHESTER, NEW YORK 14614

MARK GREGOR  
MANAGER  
CITY OF ROCHESTER DIVISON OF ENVIRONMENTAL QUALITY  
30 CHURCH STREET  
ROOM 300B  
ROCHESTER, NEW YORK 14614

CHUCK THOMAS, DIRECTOR  
CITY OF ROCHESTER PLANNING DEPARTMENT  
30 CHURCH STREET  
ROOM 100A  
ROCHESTER, NEW YORK 14614

**AGENCY OFFICIALS**

LISA SILVESTRI  
NYSDEC  
REGION 8 OFFICE  
6274 EAST AVON - LIMA ROAD  
AVON, NEW YORK 14414-9516

LINDA VERA  
NYSDEC  
REGION 8 OFFICE  
6274 EAST AVON - LIMA ROAD  
AVON, NEW YORK 14414-9516

CHARLOTTE THEOBALD  
NYSDEC  
REGION 8 OFFICE  
6274 EAST AVON - LIMA ROAD  
AVON, NEW YORK 14414-9516

BART PUTZIG  
NYSDEC  
REGION 8 OFFICE  
6274 EAST AVON - LIMA ROAD  
AVON, NEW YORK 14414-9516

CAPTAIN MIKE VAN DURME  
NYSDEC  
REGION 8 OFFICE  
6274 EAST AVON - LIMA ROAD  
AVON, NEW YORK 14414-9516

MELISSA MENETTI  
NYSDOH  
FLANIGAN SQUASARE ROOM 300  
547 RIVER STREET  
TROY, NEW YORK 12180-2216

GEOFF LACCETTI  
NYSDOH  
FLANIGAN SQUASARE ROOM 300  
547 RIVER STREET  
TROY, NEW YORK 12180-2216

**INTERESTED PARTIES**

KELLY TRAVERS-MAIN  
CITIZENS' ENVIRONMENTAL COALITION  
33 CENTRAL AVENUE  
3RD FLOOR  
ALBANY, NEW YORK 12210

WILLIAM LARSEN PE  
ROCHESTER INSTITUTE OF TECHNOLOGY  
JAMES BOOTH BUILDING  
78 LOMB MEMORIAL DRIVE  
ROCHESTER, NEW YORK 14623

CURRENT DIRECTOR  
CENTER FOR ENVIRONMENT INFORMATION  
55 ST. PAUL STREET  
ROCHESTER, NEW YORK 14604-1314

**DOCUMENT REPOSITORY**

ROCHESTER PUBLIC LIBRARY  
RUNDELL MEMORIAL LIBRARY  
115 SOUTH AVENUE  
ROCHESTER, NY 14604  
ATTN: BEATRICE BRANTLEY