

From: "Nate Simon" <NSimon@daymail.net>
To: <cbtheoba@gw.dec.state.ny.us>
CC: "Joe Biondolillo" <biondj@cityofrochester.gov>, "Dennis Peck (City)" <de...>
Date: 1/24/2011 4:36 PM
Subject: NYSDEC Site #E828144 - Andrews St 1/24/11 demolition progress

Charlotte,

At-grade and below-grade demolition work was not conducted on 1/20/11 at the 300, 304-308 and 320 Andrews Street and 25 Evans Street Site. The contractor did continue to backfill the 320 Andrews Street basement excavation with CR2. At-grade and sub-grade demolition work was scheduled to resume on Monday January 24, 2011 and is anticipated to continue throughout the week. The NYSDEC will be kept up to date as this schedule is finalized.

Nate Simon, P.E.
Day Environmental, Inc.
40 Commercial Street
Rochester, New York 14614-1008
Phone: (585) 454-0210 ext:109
Fax: (585) 454-0825

This message may contain information that is privileged or confidential. If you are not the intended recipient or an employee or agent responsible for delivering this message to the intended recipient, you are not authorized to read, print, retain, copy or disseminate this message or any part of it. If you received this transmission in error, please notify the sender by reply e-mail and delete the message and any attachments.

From: "Nate Simon" <NSimon@daymail.net>
To: <cbtheoba@gw.dec.state.ny.us>
CC: "Joe Biondolillo" <biondj@cityofrochester.gov>, "Dennis Peck (City)" <de...>
Date: 1/25/2011 9:39 AM
Subject: Andrews Street, NYSDEC Site #E828144 1-24-11 Daily Site Report
Attachments: Andrews St, NYSDEC Site # E828144, DAY Env. Daily Site Report 1-24-11.pdf

Charlotte,

The attached pdf is DAY's daily site report for January 24, 2011. The daily site report includes a daily observation report summarizing the environmental activities that were completed on the 25 Evans Street parcel, a figure presenting approximate sample locations, CAMP stations, and a CAMP monitoring log for 1/24/11. The vehicle service pit on the 25 Evans street parcel was uncovered and found to contain standing water. A liquid sample was collected from the service pit and submitted to Paradigm Analytical Laboratory to determine the disposal options for the water (i.e., Monroe County Sewer discharge, Vac Truck. etc.). The air space above the water had a PID reading of 0.0 ppm and the water had a predominately septic odor. The trench drain located within the 25 Evans Street slab was partially removed and found to contain staining at the bottom of the concrete drain/gravel sub-base interface. Samples of stained sub-base/soil (i.e., S-18 through S-22) were collected along the trench drain for investigative purposes. The impacted concrete associated with the trench drain will be segregated and disposed of in accordance with applicable regulations. Concrete samples (i.e., HM-24 and HM-25) were collected from stained portions of the concrete trench drain for waste characterization. Approximate locations of these samples are shown on the attached Figure. The soil samples collected from the 25 Evans Street parcel will be submitted to Chemtech for possible testing of the full suite of parameters presented in the "At-Grade and Sub-Grade Demolition Work Plan, 300, 304-308, 320 Andrews Street and 25 Evans Street, Rochester New York, NYSDEC Site # E828144" prepared by DAY dated October 2010. The actual samples recommended for testing will be presented to you in a subsequent communication.

Nate Simon, P.E.
Day Environmental, Inc.
40 Commercial Street
Rochester, New York 14614-1008
Phone: (585) 454-0210 ext:109
Fax: (585) 454-0825

<<Andrews St, NYSDEC Site # E828144, DAY Env. Daily Site Report 1-24-11.pdf>>

This message may contain information that is privileged or confidential. If you are not the intended recipient or an employee or agent responsible for delivering this message to the intended recipient, you are not authorized to read, print, retain, copy or disseminate this message or any part of it. If you received this transmission in error, please notify the sender by reply e-mail and delete the message and any attachments.

DAY ENVIRONMENTAL, INC.
DAILY SITE OBSERVATION REPORT

CLIENT: City of Rochester		DATE: 1/24/11
PROJECT: Andrews St At-Grade/Sub-Grade Demolition (DAY Project #4265S-09)		NYSDEC SITE #: E828144
LOCATION: 300, 304-308, 320 Andrews Street, 25 Evans Street, Rochester, New York		
ON-SITE AT: 800	OFF-SITE AT: 1500	
CONTRACTOR(S): Frederico		

COMMENTS:

2 PID meters/particulate meter - Calibration OK
(PIDs - 100-102 ppm).

815 Frederico begins to demo at grade material on 25 Evans - NW corner of site.

0945 - Frederico uncovers pit on western portion of 25 Evans - pit is filled with liquid black staining observed along central trench drain on 25 Evans - collect samples along trench drain S-18 through S-22 - PID - 0.00, ^{petro. type} odors - black staining - not obtaining high PID readings on concrete around trench (0.00) but visually impacted - per city concrete can stay in debris pile on 25 Evans until Wednesday 1/26/11 when it will be moved to staged material exclusion zone on eastern portion of site.

headspace readings - S-18 - 104 ppm, S-19 - 47.8 ppm
S-20 - 40.7 ppm S-21 - 25.2 ppm. S-22 - 10 ppm S-23 - 0.00 ppm

Soil for S-18 through S-23 consists of a brown silty sand (fill)

S-22 - slight ^{dark} staining + odor. S-23 - no staining, odor, or PID.

S-24 - silty sand (fill) dark stained soil 1-2 ft bgs NW portion andrews

headspace - 20 ppm, concrete samples HM-24 and HM-25 collected from stained portions of trench drain for waste characterization. Headspace HM-24 = 40.9 ppm and HM-25 42.7 ppm

WORK FORCE AND EQUIPMENT:

Frederico, excavator

DAY Representative (print): Kelly Crandall

DAY Representative (signed): Kelly Crandall

DAILY AIR MONITORING REPORT

DATE: 1/24/11

PAGE: 2 OF 3

NYSDEC SITE #: E828144

DAY PROJECT #: 4265S-09

SITE: 300, 304-308, 320 Andrews Street, 25 Evans Street, Rochester, New York

BY: 16AC

WEATHER CONDITIONS: -6° cold + breezy

PREVAILING WIND DIRECTION: W/NW

AIR MONITORING AND CORRECTIVE ACTION NOTES: Frederico begins to demo at grade material on 25 Evans - NW corner of site

DESCRIPTION	TIME	LOCATION	PID (ppm)	PARTICULATES (mg/m3)
BG	0800	(1)	0.00	0.000
Camp	0830	(2)	1.4	0.000
Camp	0845	(2)	0.00	(Screen Frozen - will not work)
Camp	0900	(2)	0.00	(in sub-zero weather)
BZ	0905	(3)	0.00	-
Camp	0915	(2)	0.00	
Camp	0930	(2)	0.00	
BZ	0940	(3)	0.00	
Camp	0945	(2)	0.00	
Camp	1000	(2)	PID shut off / temperature	
Camp	1045	(2)	-	0.000 - tried other meter
Camp	1130	(2)	-	0.000
Camp	1145	(2)	-	meter shut down again
Camp	1200	(2)	-	↓
both pid + particulate meters shut down due to low temperature				

break - disrupted sampling

DESCRIPTION: BZ = Breathing Zone, BG = Upwind Background, CAMP = Outside work area/at property perimeter
Initial CAMP Action Levels: 5ppm VOCs, 100 ug/m³ particulates over 15-minute average
Initial BZ Action Levels: 1ppm VOCs sustained for 5 minutes, 150 ug/m³ particulates sustained 15 minutes

Inner Loop (NYref940T)

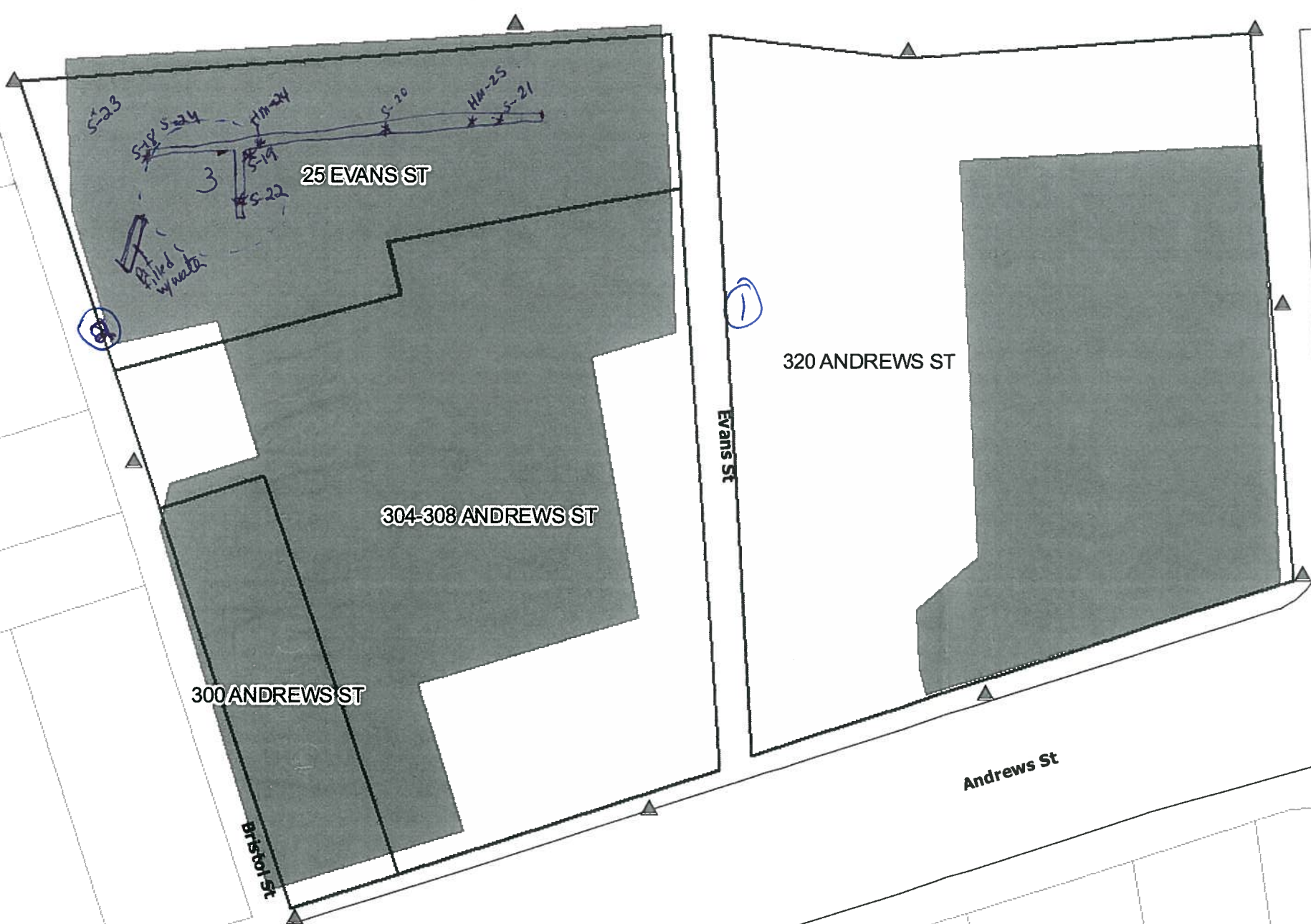
St Paul St/N Clinton Ave/Joseph Ave to Inner Loop Ramp

Legend

- ▲ CAMP Monitoring Location
- curbs
- Centerlines_City
- Andrews Street Site
- Buildings
- Adjacent Parcels



DESIGNED BY	DATE
NES	03-2010
DRAWN BY	DATE DRAWN
CPS	03-2010
SCALE	DATE ISSUED
AS NOTED	03-04-2010



3 of 3
1/24/11
Prevailing Wind
w/nw
800-1200

day
DAY ENVIRONMENTAL, INC.
Environmental Consultants
Rochester, New York 14614-1008
New York, New York 10016-0710

Project Title
300, 304-308, 320 ANDREWS STREET
AND 25 EVANS STREET
ROCHESTER, NEW YORK

ENVIRONMENTAL RESTORATION PROJECT NYSDEC SITE #: E828144
Drawing Title
Site Plan Depicting Tentative CAMP Station Locations

NOTE:
Base mapping data and utility data provided by City of Rochester and Monroe County.



Project No.
4265S-09

FIGURE 2

X:\GIS\GIS Mapping\4265S-09Roch\...

DAY ENVIRONMENTAL, INC.
DAILY SITE OBSERVATION REPORT

CLIENT: City of Rochester		DATE: 11/25/11
PROJECT: Andrews St At-Grade/Sub-Grade Demolition (DAY Project #4265S-09)		NYSDEC SITE #: E828144
LOCATION: 300, 304-308, 320 Andrews Street, 25 Evans Street, Rochester, New York		
ON-SITE AT: 0800	OFF-SITE AT: 1515	
CONTRACTOR(S): Frederico		

COMMENTS:

2 PID Calibration - OK - (100-103 ppm). particulate meter calibration - OK. Frederico on-site, site plowed. Frederico begins working in north west portion of site (25 Evans) will load out concrete from 25 Evans, etc.

Frederico transfers impacted trench drain (25 Evans) concrete to staging area and places on poly. Covers w/poly → encounters significant dark staining, petro-type odor at east end of drain within 5-8' from exclusion zone. We stop excavating at grade material in this area b/c could be source. NES on site @ 1000-1300 prep for Test pits. D. Peck + J. Biondillo on site at 1030-1130 to view test pits. Excavate 4 test pits along 25 Evans trench drain TP-8 - TP-11. Samples S-25 through S-29 collected. Refer to test pit/sample notes on page 2.

Frederico moves concrete debris pile and continues to demo at grade slab of 25 Evans (southern portion). KAC scans southern portion of concrete + ground surface below - 0.00 ppm throughout. South east portion - 0.00 ppm throughout. → An approximate 1-2 ft diameter ~~hole~~ Cobblestone well or sump structure was encountered on the south central portion of 25 Evans St. parcel. AD - 0.00 ppm no odors, staining on interior well. appears 3-4 ft deep. No indication on slab that was covering structure so apparently pre-existing to slab.

WORK FORCE AND EQUIPMENT: Frederico, Excavator

DAY Representative (print): Kelly Crandall DAY Representative (signed): Kelly Crandall

DAY ENVIRONMENTAL, INC.
DAILY SITE OBSERVATION REPORT

CLIENT: City of Rochester	DATE: 1/25/11
PROJECT: Andrews St At-Grade/Sub-Grade Demolition (DAY Project #4265S-09)	NYSDEC SITE #: E828144
LOCATION: 300, 304-308, 320 Andrews Street, 25 Evans Street, Rochester, New York	
ON-SITE AT: 0800	OFF-SITE AT: 1515
CONTRACTOR(S):	

COMMENTS: Test pit notes.

TP-8 (western most) - dark staining, petro^{type} odor
 Fill - silty sand w/ glass, scrap wood, concrete
 2' x 4' x 3' brick, sharp metal
 pid - 0.0 - 3.8 ppm
 sheen on encountered water
 Sample @ 3' S-25 (1-4) photos

TP-9 (branch drain) - moderate dark staining, PM 0.2 - 2.3 ppm
 4" metal pipe running east/west at 2' bgs silty sand (fill)
 brick, concrete wood, petro type odor headspace - 104 ppm
 2' x 4' x 2' Sample S-26 @ 2' (5-6-7) photos

TP-10 (central west) - Fill - similar to TP 8+9 pid 0.0 - 2.5 ppm
 dark staining, petro type odor bottom of this pit @ 4'
 2' x 4' x 4' sample @ 4' - S-27 is cleaner than TP 8+9
 (8-10) photos headspace - 13.6 ppm

TP-11 (eastern most) - Fill - similar to TP 8-10 pid - 0.6 - 1.5 ppm
 dark staining, petro^{type} odor 0 - 1.5 = "grossly contaminated"
 1.5' - S-28 3.5' - out of visually contaminated soil
 S-28 headspace 26.7 ppm S-29 - 3.5' bgs (10-13) photos
 2' x 4' x 3.5' S-29 headspace 188 ppm

WORK FORCE AND EQUIPMENT: Frederico, Excavator

DAY Representative (print): Kelly Crandall DAY Representative (signed): Kelly Crandall

DAILY AIR MONITORING REPORT

DATE: 1/25/11

PAGE: 3 OF 5

NYSDEC SITE #: E828144

DAY PROJECT #: 4265S-09

SITE: 300, 304-308, 320 Andrews Street, 25 Evans Street, Rochester, New York

BY: KAC

WEATHER CONDITIONS: 28° Cloudy, slight freezing rain

PREVAILING WIND DIRECTION: East

AIR MONITORING AND CORRECTIVE ACTION NOTES: Frederico begins disturbing concrete pile 830.

DESCRIPTION	TIME	LOCATION	PID (ppm)	PARTICULATES (mg/m3)
B6	805	(1)	0.00	0.000
Camp	845	(2)	0.00	0.002
Camp	0900	(2)	0.00	0.008
Camp	0915	(2)	0.00	0.004
BZ	0920	(3)	0.00	0.007
Camp	0930	(2)	0.00	0.007
Camp	0945	(2)	0.00	0.036
Camp	1000	(2)	0.00	0.037
Camp	1015	(2)	0.00	0.028
BZ	1020	(3)	0.00	0.041
Camp	1030	(2)	0.00	0.045
Camp	1045	(2)	0.00	0.038
Camp	1100	(2)	0.00	0.036
Camp	1115	(2)	0.00	0.037
Camp	1130	(2)	-pid battery dead	0.041
Camp	1145	(2)	↓	0.036
Camp	1200	(2)	0.00	0.036
Camp	1215	(2)	0.00	0.029
Camp	1230	(2)	0.00	0.031
Camp	1245	(2)	0.00	0.032
BZ	1255	(3)	0.00	0.018
Camp	1300	(2)	0.00	0.029

DESCRIPTION: BZ = Breathing Zone, BG = Upwind Background, CAMP = Outside work area/at property perimeter

Initial CAMP Action Levels: 5ppm VOCs, 100 ug/m³ particulates over 15-minute average

Initial BZ Action Levels: 1ppm VOCs sustained for 5 minutes, 150 ug/m³ particulates sustained 15 minutes

DAILY AIR MONITORING REPORT

DATE: 1/25/11

PAGE: 4 OF 5

NYSDEC SITE #: E828144

DAY PROJECT #: 4265S-09

SITE: 300, 304-308, 320 Andrews Street, 25 Evans Street, Rochester, New York

BY: IAC

WEATHER CONDITIONS: ~28° F Cloudy

PREVAILING WIND DIRECTION: East

AIR MONITORING AND CORRECTIVE ACTION NOTES:

DESCRIPTION	TIME	LOCATION	PID (ppm)	PARTICULATES (mg/m ³)
Vamp	1315	(2)	0.00	0.031
Camp	1330	(2)	0.00	0.030
Camp	1345	(2)	0.00	0.030
BZ	1350	(4)	0.00	0.008
Vamp	1400	(2)	0.00	0.022
Camp	1415	(2)	0.00	0.038
Vamp	1430	(2)	0.00	0.031
Camp	1445	(2)	0.00	0.030
BZ	1450	(2)	0.00	0.039
Camp	1500	(2)	0.00	0.032
end monitoring				

DESCRIPTION: BZ = Breathing Zone, BG = Upwind Background, CAMP = Outside work area/at property perimeter
 Initial CAMP Action Levels: 5ppm VOCs, 100 ug/m³ particulates over 15-minute average
 Initial BZ Action Levels: 1ppm VOCs sustained for 5 minutes, 150 ug/m³ particulates sustained 15 minutes

Inner Loop (NYref940T)

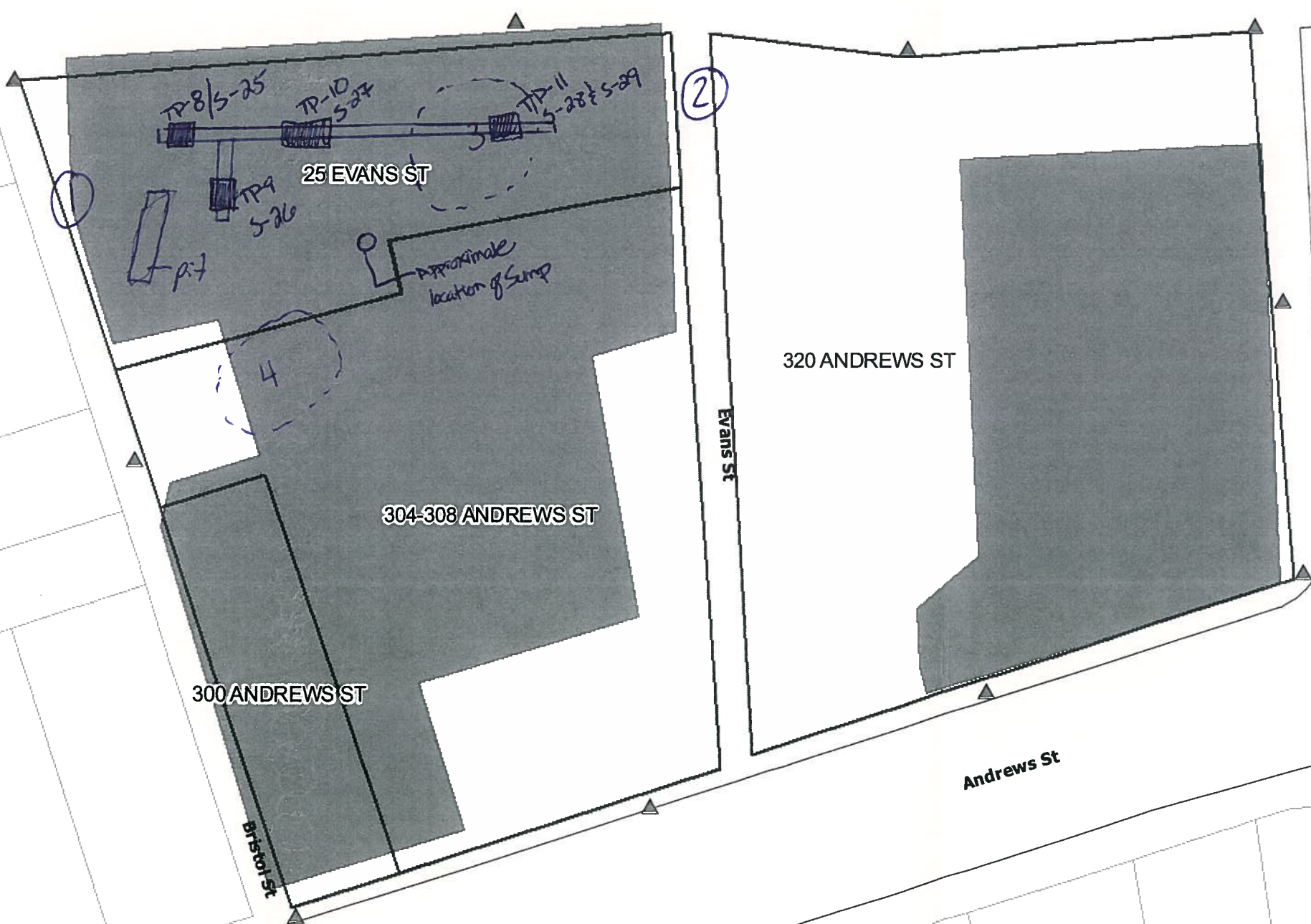
St Paul St/N Clinton Ave/Joseph Ave to Inner Loop Ramp

Legend

- ▲ CAMP Monitoring Location
- curbs
- Centerlines_City
- Andrews Street Site
- Buildings
- ▭ Adjacent Parcels



DESIGNED BY	DATE
NES	03-2010
DRAWN BY	DATE DRAWN
CPS	03-2010
SCALE	DATE ISSUED
AS NOTED	03-04-2010



1/25/11
5 of 5

prevailing wind 8- →

day
DAY ENVIRONMENTAL, INC.
 Environmental Consultants
 Rochester, New York 14614-1008
 New York, New York 10016-0710

Project Title
 300, 304-308, 320 ANDREWS STREET
 AND 25 EVANS STREET
 ROCHESTER, NEW YORK

ENVIRONMENTAL RESTORATION PROJECT NYSDEC SITE #: E828144
 Drawing Title
 Site Plan Depicting Tentative CAMP Station Locations

NOTE:
 Base mapping data and utility data provided by
 City of Rochester and Monroe County.



Project No.
 4265S-09

FIGURE 2

C:\GIS\Maping\Address\gpr\er...
 3.mxd

From: "Nate Simon" <NSimon@daymail.net>
To: <cbtheoba@gw.dec.state.ny.us>
CC: "Joe Biondolillo" <biondj@cityofrochester.gov>, "Dennis Peck (City)" <de...
Date: 1/26/2011 1:01 PM
Subject: Andrews Street, NYSDEC Site #E828144 1-25-11 Daily Site Report
Attachments: Andrews St, NYSDEC Site # E828144, DAY Env. Daily Site Report 1-25-11.pdf

Charlotte,

The attached pdf is DAY's daily site report for January 25, 2011. The daily site report includes a daily observation report summarizing the environmental activities that were completed on the 25 Evans Street parcel, a figure presenting approximate sample locations, CAMP stations, and a CAMP monitoring log for 1/25/11. During 25 Evans Street slab removal an apparent well/sump was discovered in the approximate location presented on the attached Figure. This subsurface structure will be located via GPS and it is anticipated that this subsurface structure will be removed and sampled for investigative purposes. In addition, four test pits, up to four feet in depth, were advanced within the footprint of the trench drain formerly located in the 25 Evans Street slab, and soil/fill samples were collected from these test pits for investigative purposes. The impacted concrete associated with the trench drain has been staged in the "staged material exclusion zone" and will be sampled for waste characterization parameters prior to disposal in accordance with applicable regulations. Approximate locations of the test pits and samples are shown on the attached Figure. The soil/fill samples collected from the 25 Evans Street parcel will be submitted to Chemtech for possible testing of the full suite of parameters presented in the "At-Grade and Sub-Grade Demolition Work Plan, 300, 304-308, 320 Andrews Street and 25 Evans Street, Rochester New York, NYSDEC Site # E828144" prepared by DAY dated October 2010. The actual samples recommended for testing will be presented to you in a subsequent communication.

Nate Simon, P.E.
Day Environmental, Inc.
40 Commercial Street
Rochester, New York 14614-1008
Phone: (585) 454-0210 ext:109
Fax: (585) 454-0825

<<Andrews St, NYSDEC Site # E828144, DAY Env. Daily Site Report 1-25-11.pdf>>

This message may contain information that is privileged or confidential. If you are not the intended recipient or an employee or agent responsible for delivering this message to the intended recipient, you are not authorized to read, print, retain, copy or disseminate this message or any part of it. If you received this transmission in error, please notify the sender by reply e-mail and delete the message and any attachments.

From: "Nate Simon" <NSimon@daymail.net>
To: <cbtheoba@gw.dec.state.ny.us>
CC: "Joe Biondolillo" <biondj@cityofrochester.gov>, "Dennis Peck (City)" <de...>
Date: 1/26/2011 12:50 PM
Subject: NYSDEC Site #E828144 - Andrews St 1/25/11 demolition progress
Attachments: 1-25-11 P 020.jpg; Figure 3 Andrews St NYSDEC Site # E828144 Demolition Progress 1-25-11.pdf

Charlotte,

The at-grade and sub-grade demolition continued on 1/25/11 at the 300, 304-308 and 320 Andrews Street and 25 Evans Street Site. A portion of the 25 Evans Street slab was removed and screened in accordance with the "At-Grade and Sub-Grade Demolition Work Plan, 300, 304-308, 320 Andrews Street and 25 Evans Street, Rochester New York, NYSDEC Site # E828144" prepared by DAY dated October 2010. Underlying overburden soil/fill was also screened in accordance with the Work Plan. Refer to attached photo and Figure 3 depicting the area demolished to date.

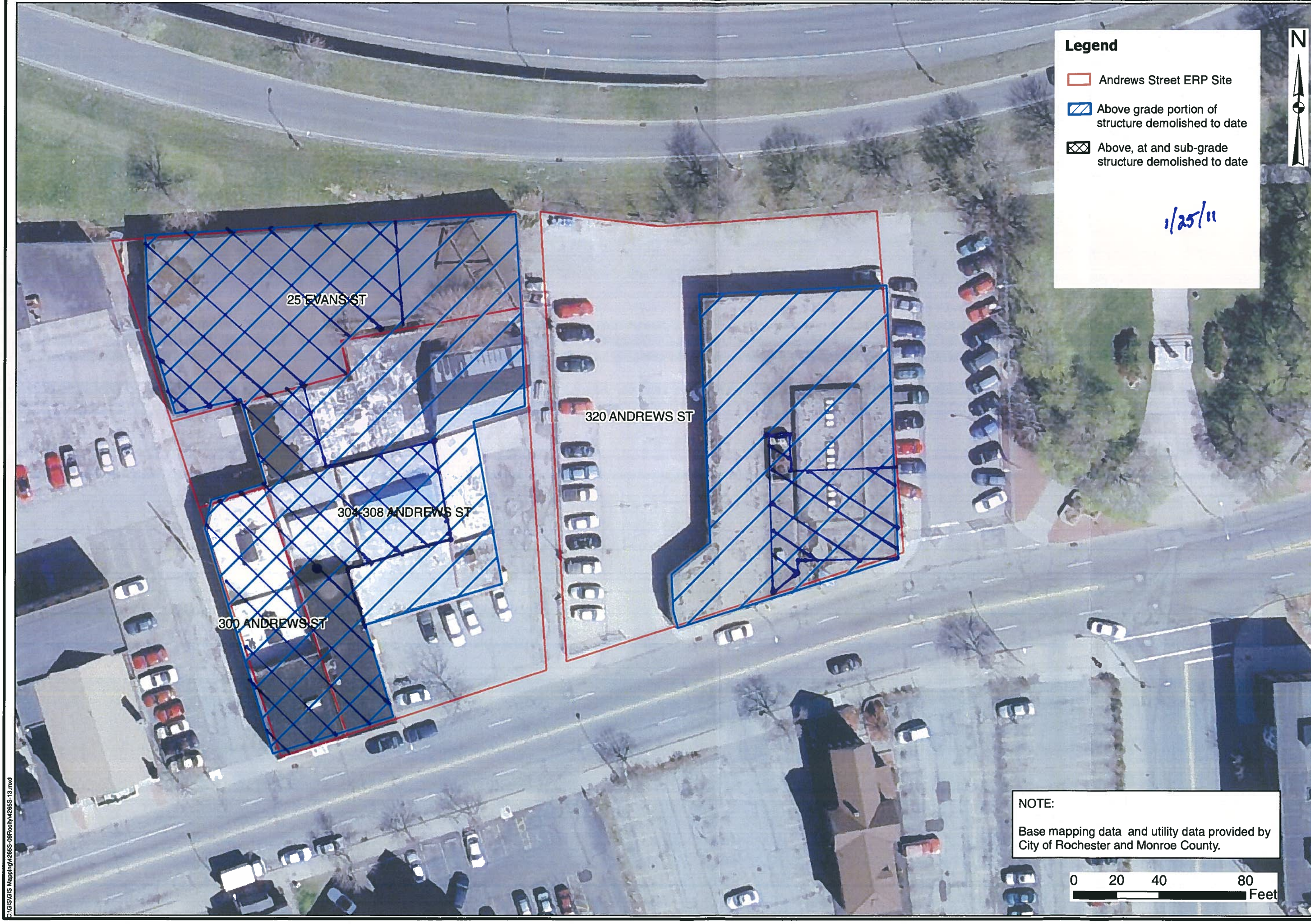
At-grade and sub-grade demolition work is scheduled to resume January 26, 2011.

Nate Simon, P.E.
Day Environmental, Inc.
40 Commercial Street
Rochester, New York 14614-1008
Phone: (585) 454-0210 ext:109
Fax: (585) 454-0825

<<1-25-11 P 020.jpg>> <<Figure 3 Andrews St NYSDEC Site # E828144 Demolition Progress 1-25-11.pdf>>

This message may contain information that is privileged or confidential. If you are not the intended recipient or an employee or agent responsible for delivering this message to the intended recipient, you are not authorized to read, print, retain, copy or disseminate this message or any part of it. If you received this transmission in error, please notify the sender by reply e-mail and delete the message and any attachments.





Legend

- Andrews Street ERP Site
- Above grade portion of structure demolished to date
- Above, at and sub-grade structure demolished to date

1/25/11



DESIGNED BY	DATE
NES	03-2010
DRAWN BY	DATE DRAWN
CPS	03-2010
SCALE	DATE ISSUED
AS NOTED	11-11-2010

day
DAY ENVIRONMENTAL, INC.
 Environmental Consultants
 Rochester, New York 14614-1008
 New York, New York 10016-0710

Project Title
 300, 304-308, 320 ANDREWS STREET
 AND 25 EVANS STREET
 ROCHESTER, NEW YORK

ENVIRONMENTAL RESTORATION PROJECT NYSDEC SITE NO.: E828144

Drawing Title
 Andrews Street ERP Site (E828144) Demolished Structure to Date

Project No.
 4265S-09

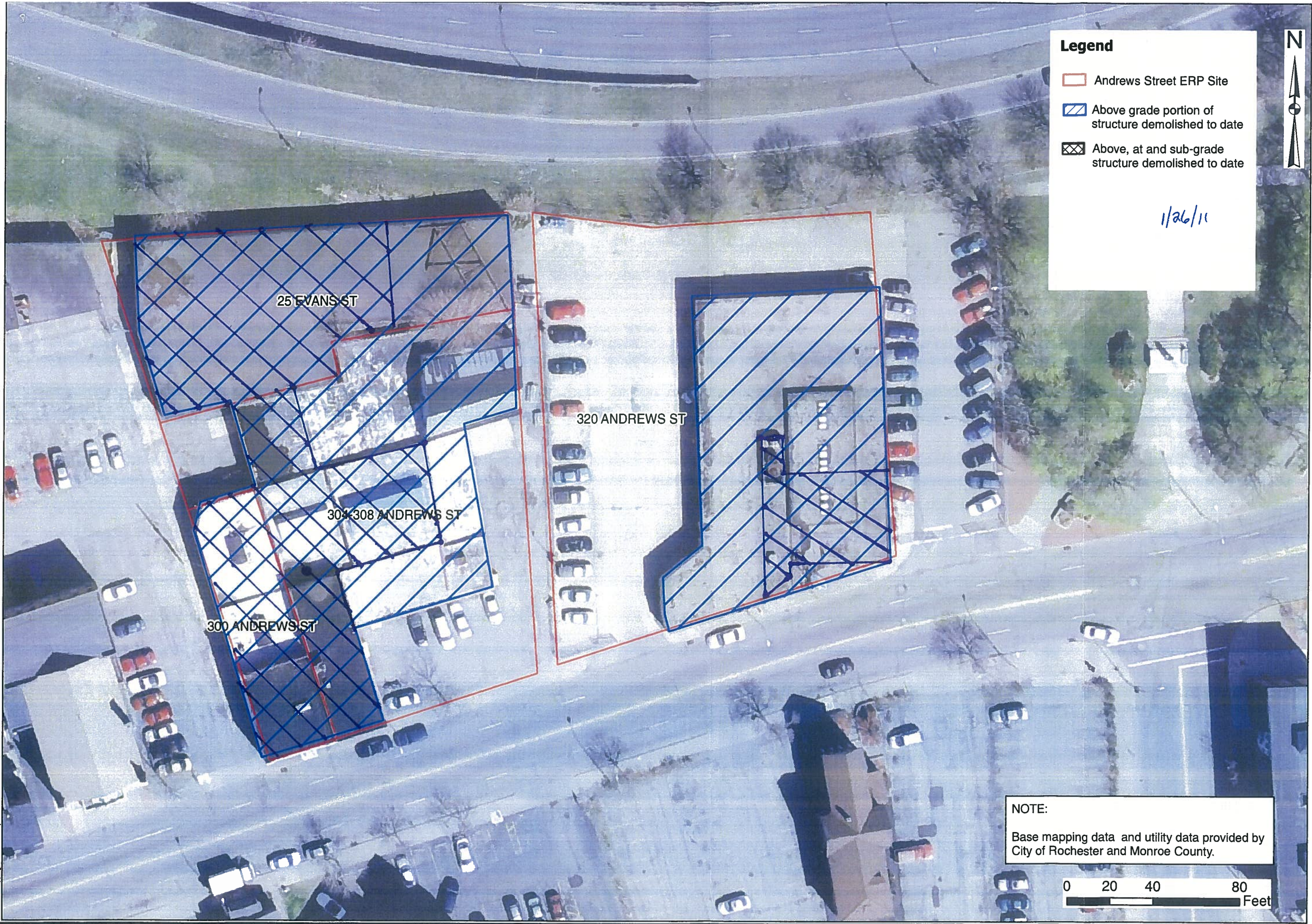
FIGURE
3

NOTE:
 Base mapping data and utility data provided by
 City of Rochester and Monroe County.



C:\GIS\GIS Mapping\4265S-09\Project\4265S-13.mxd

C:\GIS\GIS Mapping\4265S-09\Rocky\4265S-19.mxd



Legend

- Andrews Street ERP Site
- Above grade portion of structure demolished to date
- Above, at and sub-grade structure demolished to date

1/26/11



DESIGNED BY	NES	DATE	03-2010
DRAWN BY	CPS	DATE DRAWN	03-2010
SCALE	AS NOTED	DATE ISSUED	11-11-2010

day
DAY ENVIRONMENTAL, INC.
 Environmental Consultants
 Rochester, New York 14614-1008
 New York, New York 10016-0710

Project Title
 300, 304-308, 320 ANDREWS STREET
 AND 25 EVANS STREET
 ROCHESTER, NEW YORK

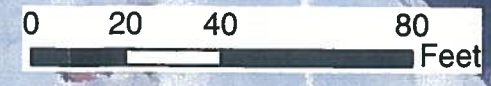
ENVIRONMENTAL RESTORATION PROJECT NYSDEC SITE NO.: E828144
 Drawing Title

Andrews Street ERP Site (E828144) Demolished Structure to Date

Project No.
 4265S-09

FIGURE
3

NOTE:
 Base mapping data and utility data provided by
 City of Rochester and Monroe County.



DAY ENVIRONMENTAL, INC.
DAILY SITE OBSERVATION REPORT

CLIENT: City of Rochester	DATE: 1/26/11
PROJECT: Andrews St At-Grade/Sub-Grade Demolition (DAY Project #4265S-09)	NYSDEC SITE #: E828144
LOCATION: 300, 304-308, 320 Andrews Street, 25 Evans Street, Rochester, New York	
ON-SITE AT: 745	OFF-SITE AT: 1500
CONTRACTOR(S): Frederico	

COMMENTS:

2 Pips Calibration OK (100-102 ppm) Particulate meter Calibration OK
Frederico continues demolition of at grade material on 25 Evans parcel and NW portion of site. Removing Southern footer of 25 Evans.

→ 1000 D. Peck J. Biondillo, NES, Chuck Fox on site to view removal/excavation of well/pump structure. Structure is excavated to 6.5' bgs. Structure consists of cobbles/rocks. no evidence of staining, odor, leachates, etc. Soil around structure appears a silty sand fill. no definitive bottom was reached → still appeared to be hole filled w/ cobbles/rock at 6.5'. Soil was sampled at bottom. No pid readings (0.00) through out structure walls + bottom headspace - 0.00 of bottom soil. Sample S-30 @ 1015
D. Peck/J. Biondillo, C. Fox of site ~ 1030

→ NES samples concrete Hm-26 headspace 2.9 ppm off site ~ 1145
Frederico continues w/ excavation of 25 Evans Southern + Eastern footers. IAC scans concrete footer peels, etc and ground surface around removed footer, concrete. PID 0.00-0.4 ppm
no odors/no staining, etc

WORK FORCE AND EQUIPMENT: Frederico, Excavator

DAY Representative (print): Kelly Crandall DAY Representative (signed): Kelly Crandall

DAILY AIR MONITORING REPORT

DATE: 1/26/11

PAGE: 2 OF 4

NYSDEC SITE #: E828144

DAY PROJECT #: 4265S-09

SITE: 300, 304-308, 320 Andrews Street, 25 Evans Street, Rochester, New York

BY: KAC

WEATHER CONDITIONS: 20°F Cloudy

PREVAILING WIND DIRECTION: W/NW

AIR MONITORING AND CORRECTIVE ACTION NOTES: Frederico demo's at grade for 25 Evans and Foster southern parking and eastern foster.

DESCRIPTION	TIME	LOCATION	PID (ppm)	PARTICULATES (mg/m3)
BG	745	(1)	0.00	0.000
Camp	815	(2)	0.00	0.000
Camp	830	(2)	0.00	0.028
Camp	845	(2)	0.00	0.021
BZ	850	(3)	0.00	0.007
Camp	900	(2)	0.00	0.029
Camp	915	(2)	0.00	0.029
Camp	930	(2)	0.00	0.038
Camp	945	(2)	0.00	0.039
BZ	950	(3)	0.00	0.020
Camp	1000	(2)	0.00	0.048
Camp	1015	(2)	0.00	0.054
Camp	1030	(2)	0.00	0.052
BZ	1035	(3)	0.00	0.010
Camp	1045	(2)	0.00	0.046
Camp	1100	(2)	0.00	0.050
Camp	1115	(2)	0.00	0.036
Camp	1130	(2)	0.00	0.039
BZ	1135	(3)	0.00	0.014
Camp	1145	(2)	0.00	0.058
Camp	1200	(2)	0.00	0.041
Camp	1215	(2)	0.00	0.050

DESCRIPTION: BZ = Breathing Zone, BG = Upwind Background, CAMP = Outside work area/at property perimeter

Initial CAMP Action Levels: 5ppm VOCs, 100 ug/m³ particulates over 15-minute average

Initial BZ Action Levels: 1ppm VOCs sustained for 5 minutes, 150 ug/m³ particulates sustained 15 minutes

DAILY AIR MONITORING REPORT

DATE: 11/26/11 Cont

PAGE: 3 OF 4

NYSDEC SITE #: E828144

DAY PROJECT #: 4265S-09

SITE: 300, 304-308, 320 Andrews Street, 25 Evans Street, Rochester, New York

BY: KAC

WEATHER CONDITIONS: 20°F Cloudy

PREVAILING WIND DIRECTION: W/NW

AIR MONITORING AND CORRECTIVE ACTION NOTES:

DESCRIPTION	TIME	LOCATION	PID (ppm)	PARTICULATES (mg/m3)
BZ	1220	(3)	0.00	0.012
Camp	1230	(2)	0.00	0.039
Camp	1245	(2)	0.00	0.044
Camp	1300	(2)	0.00	0.041
Camp	1315	(2)	0.00	0.031
BZ	1320	(3)	0.00	0.002
Camp	1330	(2)	0.00	0.023
Camp	1345	(2)	0.00	0.027
Camp	1400	(2)	0.00	0.021
Camp	1415	(2)	0.00	0.024
Camp	1430	(2)	0.00	0.023
BZ	1435	(3)	0.00	0.019
Camp	1445	(2)	0.00	0.022
end monitoring				

DESCRIPTION: BZ = Breathing Zone, BG = Upwind Background, CAMP = Outside work area/at property perimeter
 Initial CAMP Action Levels: 5ppm VOCs, 100 ug/m³ particulates over 15-minute average
 Initial BZ Action Levels: 1ppm VOCs sustained for 5 minutes, 150 ug/m³ particulates sustained 15 minutes

Inner Loop (NYref940T)

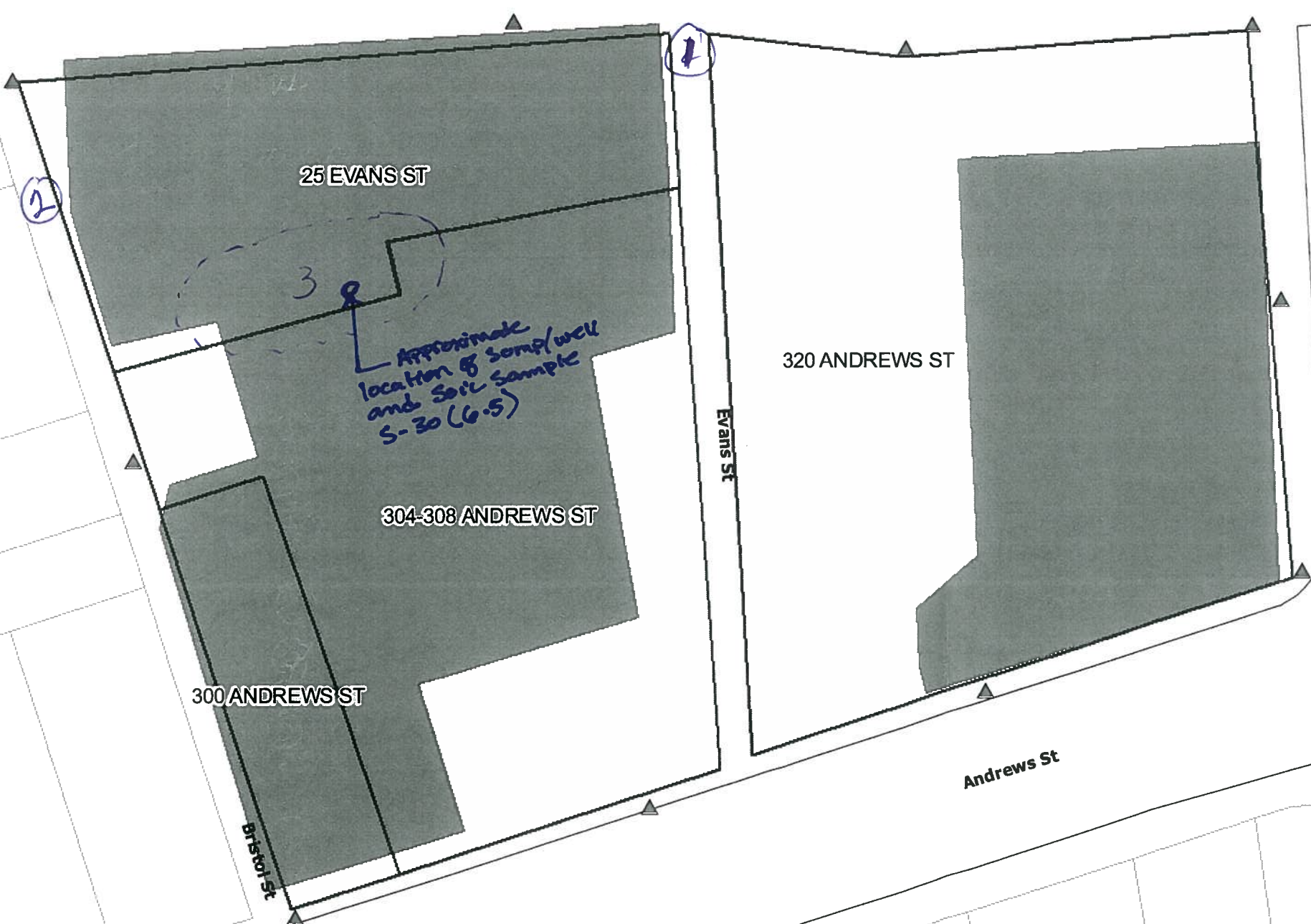
St Paul St/N Clinton Ave/Joseph Ave to Inner Loop Ramp

Legend

- ▲ CAMP Monitoring Location
- curbs
- Centerlines_City
- Andrews Street Site
- Buildings
- Adjacent Parcels



DESIGNED BY	DATE
NES	03-2010
DRAWN BY	DATE DRAWN
CPS	03-2010
SCALE	DATE ISSUED
AS NOTED	03-04-2010



25 EVANS ST

320 ANDREWS ST

304-308 ANDREWS ST

300 ANDREWS ST

Evans St

Franklin Sq

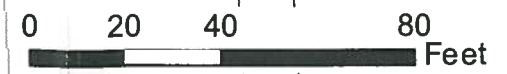
Andrews St

Franklin St

Approximate location of sump/well and soil sample S-30 (6.5)

4 of 4
 ← w/nw prevailing wind

NOTE:
 Base mapping data and utility data provided by City of Rochester and Monroe County.



day
DAY ENVIRONMENTAL, INC.
 Environmental Consultants
 Rochester, New York 14614-1008
 New York, New York 10016-0710

Project Title
 300, 304-308, 320 ANDREWS STREET
 AND 25 EVANS STREET
 ROCHESTER, NEW YORK

ENVIRONMENTAL RESTORATION PROJECT_NYSDEC SITE #. E828144
 Drawing Title

Site Plan Depicting Tentative CAMP Station Locations

Project No.
 4265S-09

FIGURE 2

3D GIS Mapping/265S-09/03-04-2010

From: "Nate Simon" <NSimon@daymail.net>
To: <cbtheoba@gw.dec.state.ny.us>
CC: "Joe Biondolillo" <biondj@cityofrochester.gov>, "Dennis Peck (City)" <de...>
Date: 1/26/2011 4:17 PM
Subject: Andrews Street, NYSDEC Site #E828144 - proposed samples to be tested
Attachments: Proposed Sample Testing Program 1-26-11.pdf

Charlotte,

The attached pdf presents a summary of the soil samples that were collected on January 24, 2011 and January 25, 2011 from below the basement slab of the 25 Evans Street building. The table includes sample information (sample ID, select field information and PID reading, time of collection, etc.). You may need to zoom in to read the table. A Figure presenting the recent soil sample locations is also included.

For the purposes of spatial coverage and testing of samples that were excavated beneath/in proximity to the trench drain it is proposed that the following samples be analyzed per the approved work plan for the full suite of parameters:

Sample to be Analyzed:
S-24,
S-26,
S-28,
S-29

Each sample on the table is currently "on-hold" at Chemtech. Please review the information and let DAY know if you concur with the City and DAY recommendations for sample analysis. Thanks.

Nate Simon, P.E.
Day Environmental, Inc.
40 Commercial Street
Rochester, New York 14614-1008
Phone: (585) 454-0210 ext:109
Fax: (585) 454-0825

<<Proposed Sample Testing Program 1-26-11.pdf>>

This message may contain information that is privileged or confidential. If you are not the intended recipient or an employee or agent responsible for delivering this message to the intended recipient, you are not authorized to read, print, retain, copy or disseminate this message or any part of it. If you received this transmission in error, please notify the sender by reply e-mail and delete the message and any attachments.

From: "Nate Simon" <NSimon@daymail.net>
To: <cbtheoba@gw.dec.state.ny.us>
CC: "Joe Biondolillo" <biondj@cityofrochester.gov>, "Dennis Peck (City)" <de...>
Date: 1/27/2011 11:42 AM
Subject: Andrews Street, NYSDEC Site #E828144 1-26-11 Daily Site Report
Attachments: Andrews St, NYSDEC Site # E828144, DAY Env. Daily Site Report 1-26-11.pdf

Charlotte,

The attached pdf is DAY's daily site report for January 26, 2011. The daily site report includes a daily observation report summarizing the environmental activities that were completed on the 25 Evans Street parcel, a figure presenting approximate sample locations, CAMP stations, and a CAMP monitoring log for 1/26/11. During 25 Evans Street slab removal an apparent well/sump was discovered in the approximate location presented on the attached Figure. This subsurface structure was located via GPS and subsequently removed to approximately 6.5 feet below the ground surface. Soil sample S-30 was collected from the soil within the structure at 6.5 feet below the ground surface. Ambient air screening and the headspace sample collected from 6.5 below the ground surface had a maximum PID measurement of 0 ppm. Soil sample S-30 will be submitted to Chemtech and placed "on-hold".

DAY and the City purpose to test soil sample S-30 collected from within the sump/well structure identified under the 25 Evans Street building slab for the full suite of parameters. Please review the information and let DAY know if you concur with the City and DAY recommendations for sample analysis.

Nate Simon, P.E.
Day Environmental, Inc.
40 Commercial Street
Rochester, New York 14614-1008
Phone: (585) 454-0210 ext:109
Fax: (585) 454-0825

<<Andrews St, NYSDEC Site # E828144, DAY Env. Daily Site Report 1-26-11.pdf>>

This message may contain information that is privileged or confidential. If you are not the intended recipient or an employee or agent responsible for delivering this message to the intended recipient, you are not authorized to read, print, retain, copy or disseminate this message or any part of it. If you received this transmission in error, please notify the sender by reply e-mail and delete the message and any attachments.

From: "Nate Simon" <NSimon@daymail.net>
To: <cbtheoba@gw.dec.state.ny.us>
CC: "Joe Biondolillo" <biondj@cityofrochester.gov>, "Dennis Peck (City)" <de...
Date: 1/27/2011 11:40 AM
Subject: NYSDEC Site #E828144 - Andrews St 1/26/11 demolition progress
Attachments: Figure 3 Andrews St NYSDEC Site # E828144 Demolition Progress 1-26-11.pdf

Charlotte,

The at-grade and sub-grade demolition continued on 1/26/11 at the 300, 304-308 and 320 Andrews Street and 25 Evans Street Site. The southern building footers associated with the 25 Evans Street building were removed and screened in accordance with the "At-Grade and Sub-Grade Demolition Work Plan, 300, 304-308, 320 Andrews Street and 25 Evans Street, Rochester New York, NYSDEC Site # E828144" prepared by DAY dated October 2010. Underlying overburden soil/fill was also screened in accordance with the Work Plan. Refer to attached photo and Figure 3 depicting the area demolished to date.

It is currently scheduled that the contractor will remove hard debris from the Site on January 27, 2011 and January 28, 2011. At-grade and sub-grade demolition work is scheduled to resume January 31, 2011.

Nate Simon, P.E.
Day Environmental, Inc.
40 Commercial Street
Rochester, New York 14614-1008
Phone: (585) 454-0210 ext:109
Fax: (585) 454-0825

<<Figure 3 Andrews St NYSDEC Site # E828144 Demolition Progress 1-26-11.pdf>>

This message may contain information that is privileged or confidential. If you are not the intended recipient or an employee or agent responsible for delivering this message to the intended recipient, you are not authorized to read, print, retain, copy or disseminate this message or any part of it. If you received this transmission in error, please notify the sender by reply e-mail and delete the message and any attachments.

Table 1

DRAFT

Samples Collected for Possible Analytical Laboratory Testing

At-Grade and Sub-Grade Demolition Phase Environmental Work Plan
300, 304-308, 320 Andrews Street and 25 Evans Street
Rochester, New York

NYSDEC Site #E828144

Sample Number	Sample ID	Collection Date	Time of Sample Collection	Composite or Grab	Sample PID Reading	Depth / Depth Interval (ft bgs)	Slab Elevation	Adjusted Sample Depth (ft bgs) ⁽¹⁾	Matrix	MS/MSD Sample Collected	Collection Rational	Notes
	HM-24	1/24/2011	11:30	Grab	40.9	2.0'	At-Grade	2.0	Concrete	No	25 Evans Trench Drain Characterization	
	HM-25	1/24/2011	11:45	Grab	42.7	2.0'	At-Grade	2.0	Concrete	No	25 Evans Trench Drain Characterization	
	S-18	1/24/2011	10:35	Grab	104	2.0'	At-Grade	2.0	Soil	No	25 Evans Trench Drain Evaluation	
	S-19	1/24/2011	10:30	Grab	47.8	2.0'	At-Grade	2.0	Soil	Yes	25 Evans Trench Drain Evaluation	
	S-20	1/24/2011	10:45	Grab	40.7	2.0'	At-Grade	2.0	Soil	No	25 Evans Trench Drain Evaluation	
	S-21	1/24/2011	10:50	Grab	25.2	2.0	At-Grade	2.0	Soil	No	25 Evans Trench Drain Evaluation	
	S-22	1/24/2011	11:45	Grab	10	2.0	At-Grade	2.0	Soil	No	25 Evans Trench Drain Evaluation	
	S-23	1/24/2011	12:00	Grab	0	0.5	At-Grade	0.5	Soil	No	25 Evans Street Confirmatory Clean	
	S-24	1/24/2011	14:30	Grab	20	2.0	At-Grade	2.0	Soil	No	25 Evans Street Confirmatory Clean	Full Suite
038	Vehicle Service Pit	1/24/2011	13:00	Grab	0	1.0	At-Grade	1.0	Water	No	Sewer User Permit	VOCs, SVOCs, RCRA Metals, pH
	S-25	1/25/2011	10:40	Grab	3.8	3.0	At-Grade	3.0	Soil	No	25 Evans Trench Drain Evaluation - test pit	
	S-26	1/25/2011	11:00	Grab	104	2.0	At-Grade	2.0	Soil	No	25 Evans Trench Drain Evaluation - test pit	Full Suite
	S-27	1/25/2011	11:15	Grab	13.6	4.0	At-Grade	4.0	Soil	No	25 Evans Trench Drain Evaluation - test pit	
	S-28	1/25/2011	11:30	Grab	26.7	1.5	At-Grade	1.5	Soil	No	25 Evans Trench Drain Evaluation - test pit	Full Suite
	S-29	1/25/2011	11:25	Grab	188	3.5	At-Grade	3.5	Soil	Yes	25 Evans Trench Drain Evaluation - test pit	Full Suite

Notes

(1) Approximate depth of sample as referenced to a surveyed sidewalk adjacent to Andrews Street with assumed datum of 0.00 feet.

(2) Slab and soil sample were at a higher elevation than the Andrews Street sidewalk reference point

(3) Additional sample volume was collected to allow for subsequent waste characterization testing, if warranted

NA = Not Applicable

Ft = Feet

bgs below ground surface

Full Suite of Parameters = TCL VOCs + TICs (8260); TCL SVOCs + TICs (8270); TAL Metals (6010/7471); Cyanide (9012); PCBs (8082) and Pesticides (8081)

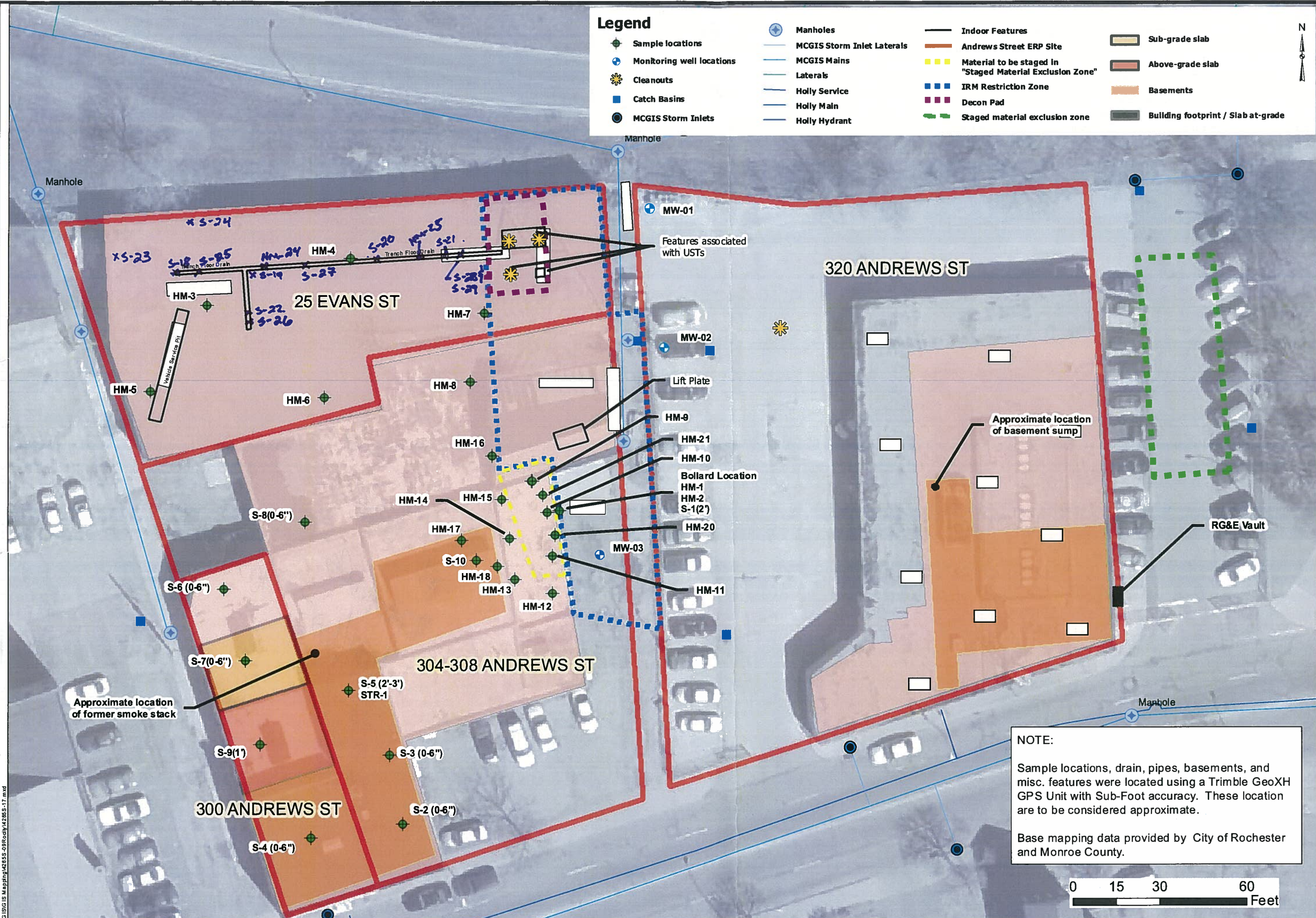
TCL = Total Compound List

TAL = Target Analyte List

PCBs = Polychlorinated Biphenyls

MS/MSD = Matrix Spike/Matrix Spike Duplicate

Sample Recommended for Testing by DAY (recommended testing parameters presented in "Notes" column)
--



NOTE:
 Sample locations, drain, pipes, basements, and misc. features were located using a Trimble GeoXH GPS Unit with Sub-Foot accuracy. These location are to be considered approximate.

 Base mapping data provided by City of Rochester and Monroe County.



DESIGNED BY	DATE
NES	11-2010
DRAWN BY	DATE DRAWN
CPS	11-2010
SCALE	DATE ISSUED
AS NOTED	01-12-2011

day
DAY ENVIRONMENTAL, INC.
 Environmental Consultants
 Rochester, New York 14614-1008
 New York, New York 10016-0710

ENVIRONMENTAL RESTORATION PROJECT NYSDEC SITE NO.: EB28144
 Project Title
 300, 304-308, 320 ANDREWS STREET
 AND 25 EVANS STREET
 ROCHESTER, NEW YORK
 Project No.
 4265S-09
 Site Plan - Sample Locations

FIGURE 1

From: "Nate Simon" <NSimon@daymail.net>
To: <cbtheoba@gw.dec.state.ny.us>
CC: "Joe Biondolillo" <biondj@cityofrochester.gov>, "Dennis Peck (City)" <de...>
Date: 1/28/2011 8:32 AM
Subject: NYSDEC Site #E828144 - Andrews St 1/27/11 demolition progress

Charlotte,

At-grade and below-grade demolition work was not conducted on 1/27/11 at the 300, 304-308 and 320 Andrews Street and 25 Evans Street Site. The contractor did remove hard materials from the Site throughout the day. At-grade and sub-grade demolition work was scheduled to resume on Monday January 31, 2011 and is anticipated to continue throughout the week. The NYSDEC will be kept up to date as this schedule is finalized.

Nate Simon, P.E.
Day Environmental, Inc.
40 Commercial Street
Rochester, New York 14614-1008
Phone: (585) 454-0210 ext:109
Fax: (585) 454-0825

This message may contain information that is privileged or confidential. If you are not the intended recipient or an employee or agent responsible for delivering this message to the intended recipient, you are not authorized to read, print, retain, copy or disseminate this message or any part of it. If you received this transmission in error, please notify the sender by reply e-mail and delete the message and any attachments.

From: "Jeff Danzinger" <JDanzinger@daymail.net>
To: <cbtheoba@gw.dec.state.ny.us>
CC: "Fox, Charles" <Foxc@CityofRochester.gov>, "Colombo, Curt" <colomboc@Cit...>
Date: 1/31/2011 3:12 PM
Subject: NYSDEC Site #E828144 - Andrews St 1/26/11 demolition progress

Charlotte,

At-grade and below-grade demolition work was not conducted on 1/28/11 at the 300, 304-308 and 320 Andrews Street and 25 Evans Street Site. The contractor did remove hard materials from the Site throughout the day. At-grade and sub-grade demolition work was scheduled to resume on Monday January 31, 2011 and is anticipated to continue throughout the week. The NYSDEC will be kept up to date as this schedule is finalized.

Jeff

Jeffrey A. Danzinger

Day Environmental, Inc.

40 Commercial Street

Rochester, New York 14614-1008

Phone: (585) 454-0210 ext:114

Fax: (585) 454-0825

This message may contain information that is privileged or confidential. If you are not the intended recipient or an employee or agent responsible for delivering this message to the intended recipient, you are not authorized to read, print, retain, copy or disseminate this message or any part of it. If you received this transmission in error, please notify the sender by reply e-mail and delete the message and any attachments.