



QUADRANGLE LOCATION



SOURCE:
USGS; 1966, ARTHUR KILL, NY-NJ
7.5 Minute Topographic Quadrangle



0 2000'

Title:

SITE LOCATION MAP

FINAL ENGINEERING REPORT FOR OU-3

Prepared for:

NASSAU METALS CORPORATION
STATEN ISLAND, NEW YORK

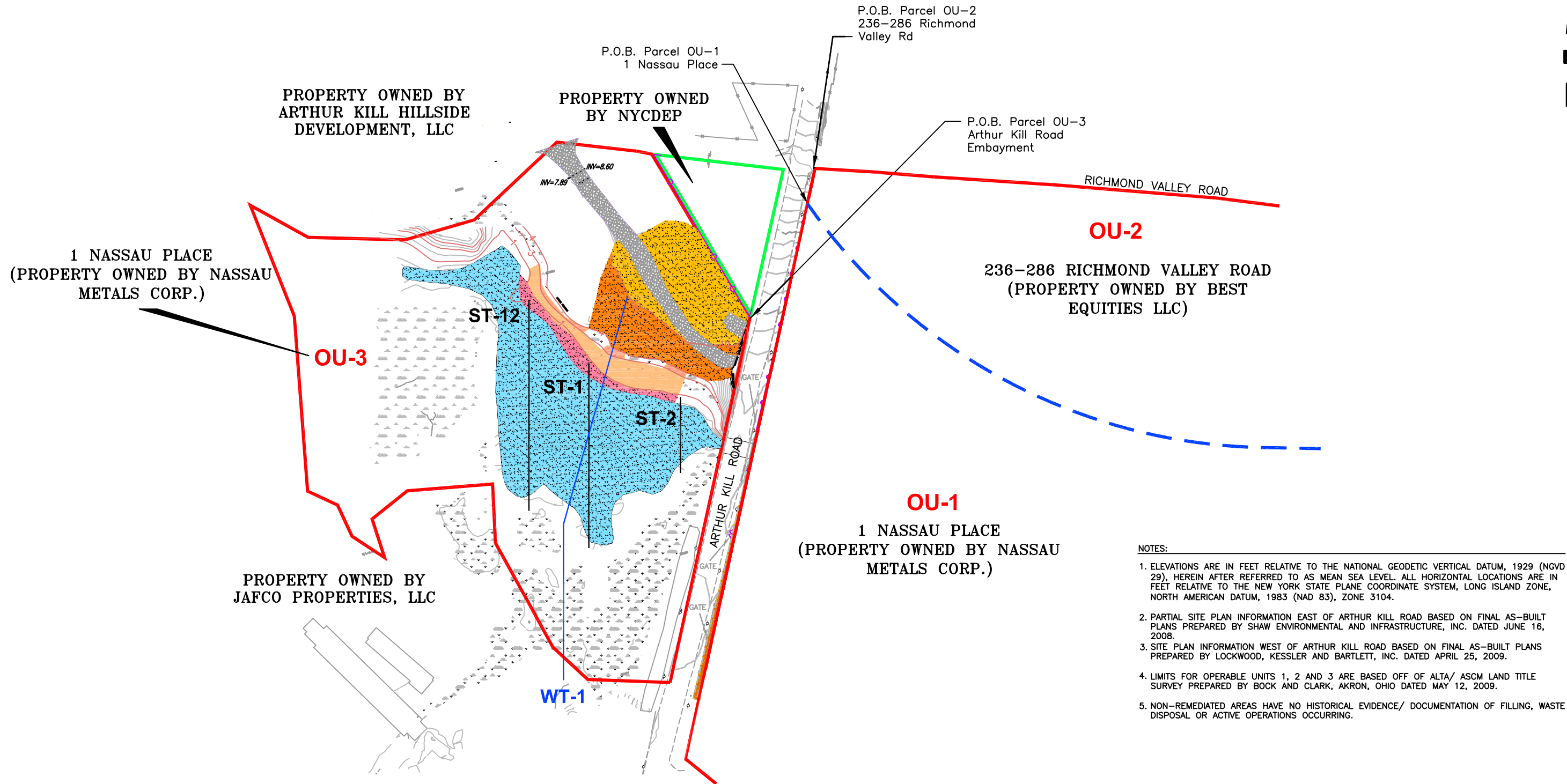
ROUX
ROUX ASSOCIATES, INC.
Environmental Consulting
& Management

Compiled by: O.R.	Date: 01FEB11
Prepared by: J.A.D.	Scale: AS SHOWN
Project Mgr.: O.R.	Project No.: 0770.0002Y011
File: 0770.0002Y454.01	

FIGURE

1

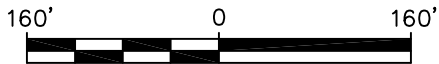
V:\CAD\PROJECTS\0770Y\0002Y\454\0770.0002Y454.02.DWG



- NOTES:
- ELEVATIONS ARE IN FEET RELATIVE TO THE NATIONAL GEODETIC VERTICAL DATUM, 1929 (NGVD 29), HEREIN AFTER REFERRED TO AS MEAN SEA LEVEL. ALL HORIZONTAL LOCATIONS ARE IN FEET RELATIVE TO THE NEW YORK STATE PLANE COORDINATE SYSTEM, LONG ISLAND ZONE, NORTH AMERICAN DATUM, 1983 (NAD 83), ZONE 3104.
 - PARTIAL SITE PLAN INFORMATION EAST OF ARTHUR KILL ROAD BASED ON FINAL AS-BUILT PLANS PREPARED BY SHAW ENVIRONMENTAL AND INFRASTRUCTURE, INC. DATED JUNE 16, 2008.
 - SITE PLAN INFORMATION WEST OF ARTHUR KILL ROAD BASED ON FINAL AS-BUILT PLANS PREPARED BY LOCKWOOD, KESSLER AND BARTLETT, INC. DATED APRIL 25, 2009.
 - LIMITS FOR OPERABLE UNITS 1, 2 AND 3 ARE BASED OFF OF ALTA/ ASCM LAND TITLE SURVEY PREPARED BY BOCK AND CLARK, AKRON, OHIO DATED MAY 12, 2009.
 - NON-REMIEDIATED AREAS HAVE NO HISTORICAL EVIDENCE/ DOCUMENTATION OF FILLING, WASTE DISPOSAL OR ACTIVE OPERATIONS OCCURRING.

LEGEND

	EXISTING BUILDING/STRUCTURE		NEW FENCE GATE		SAND CAP
	MINOR CONTOUR ELEVATION (DASHED WHERE INFERRED) - CONTOUR INTERVAL 1 FOOT (FEET ABOVE MEAN SEA LEVEL). ONLY THE 1, 3 AND 4 FOOT CONTOURS (HIGHLIGHTED IN BROWN) SHOWN FOR CLARITY.		VCA SITE BOUNDARY/ OPERABLE UNIT LIMITS		RESTORED LOW MARSH AREAS
	INDEX CONTOUR ELEVATION (DASHED WHERE INFERRED) - CONTOUR INTERVAL 1 FOOT (FEET ABOVE MEAN SEA LEVEL). ONLY THE 10 FOOT CONTOUR (HIGHLIGHTED IN BROWN) SHOWN FOR CLARITY.		BOUNDARY BETWEEN OU-1 AND OU-2		RESTORED HIGH MARSH AREAS
	EXISTING FENCELINE		NEW FENCING		RESTORED LITTORAL ZONE
	LIGHT POLE		OU-1		RESTORED WETLAND ADJACENT AREAS
	EXISTING RAILROAD TRACKS		ST-1		RESTORED UPLAND AREAS
	ELECTRIC POLE		WT-1		RESTORED STONE ACCESS ROADS
			EXISTING WETLANDS WHERE NO MONITORING IS REQUIRED		



Title:

OU-3 SITE PLAN

FINAL ENGINEERING REPORT FOR OU-3

Prepared For:

NASSAU METALS CORPORATION

STATEN ISLAND, NEW YORK

ROUX

ROUX ASSOCIATES, INC.

Environmental Consulting and Management

Compiled by: O.R.

Prepared by: O.R.

Project Mgr: O.R.

File: 0770.0002Y454.02

Date: 01FEB11

Scale: AS SHOWN

Project: 0770.0002Y011

FIGURE

2

APPENDICES A – T
(See Attached DVD)

- A. NYSDEC Approval Letters/ Emails
- B. Key Documentation Provided to the NYSDEC
- C. Daily Construction Reports
- D. Monthly Construction Progress Reports
- E. Regulatory Permits
- F. CAMP Data and Action Level Exceedance Report
- G. As-Built Drawings (Hard Copy Also Included in Addition to DVD)
- H. On-Site Wastewater Treatment Facility Analytical Results
- I. Miscellaneous Product Specifications
- J. Off-Site Fill Material Clean Fill Certifications
- K. Off-Site Fill Material Chemical Quality Assurance Data
- L. Off-Site Fill Material Physical Quality Assurance Data
- M. Off-Site Fill Material Import Tickets
- N. C&D Debris and Bulky Waste Disposal Tickets
- O. Disposal Documentation for Non-Hazardous Sediments Shipped to the GROWS Facility
- P. Disposal Documentation for Non-Hazardous Stone Shipped to the Burlington Facility
- Q. Waste Characterization Analytical Data
- R. Equipment Decontamination Certificates
- S. Site Management Plan
- T. Declaration of Covenants and Restrictions

APPENDIX G

As-Built Drawings
(Hard Copy Also Included in Addition to DVD)