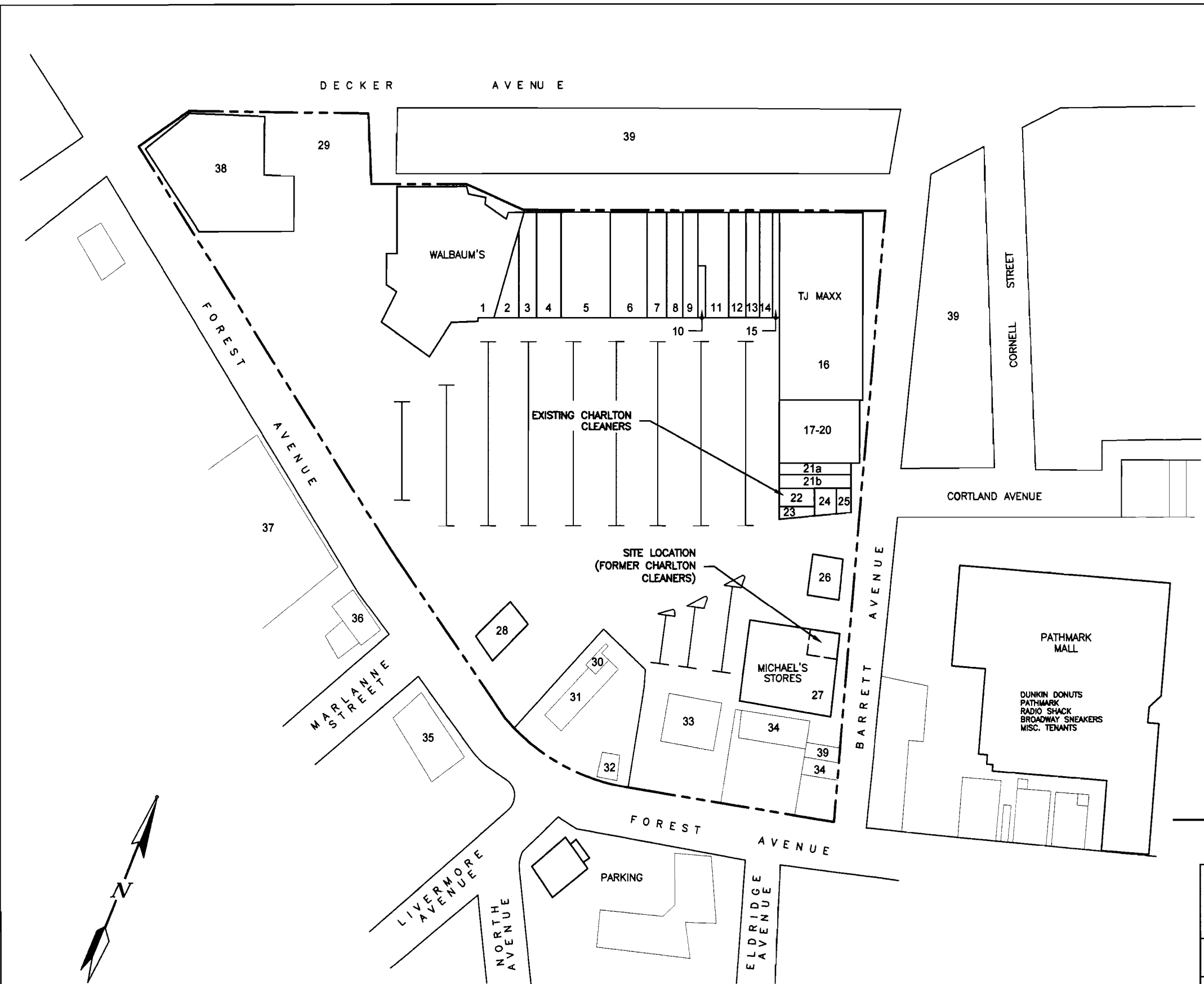


FIGURES



LEGEND

- | | | | |
|-------|----------------------------|----|--|
| 1 | WALBAUM'S | 30 | FORMER PAUL MILLER DRY CLEANING FACILITY |
| 2 | RAINBOW SHOPS | 31 | BOSTON MARKET |
| 3 | MODERN WOMAN | 32 | KFC |
| 4 | LECHTERS | 33 | COLOR TILE |
| 5 | PARTY CITY | 34 | MISCELLANEOUS RETAIL |
| 6 | CVS | 35 | WEST COAST VIDEO |
| 7 | JORDAN'S CARDS | 36 | BANK |
| 8 | DRESS BARN | 37 | RICKELS HOME CENTER |
| 9 | EMPIRE SZECHUAN | 38 | MISCELLANEOUS RETAIL |
| 10 | NAIL SALON | 39 | RESIDENTIAL |
| 11 | BUY RITE LIQUORS | | |
| 12 | DANICE \$10 STORES | | |
| 13 | ONE PRICE CLOTHING | | |
| 14 | PAYLESS SHOES | | |
| 15 | VICTORY CAMERA | | |
| 16 | TJ MAXX | | |
| 17-20 | HOME TOWN BUFFET | | |
| 21a | PIZZA STORE | | |
| 21b | PETLAND DISCOUNTS | | |
| 22 | CHARLTON CLEANERS | | |
| 23 | SPECS FOR LESS | | |
| 24 | G.J.'S UNISEX | | |
| 25 | PLAZA DELI | | |
| 26 | COCONUTS | | |
| 27 | MICHAEL'S STORES | | |
| 28 | NORTHFIELD BANK | | |
| 29 | POTENTIAL DEVELOPMENT SITE | | |
| | FAST BOUNDARY | | |

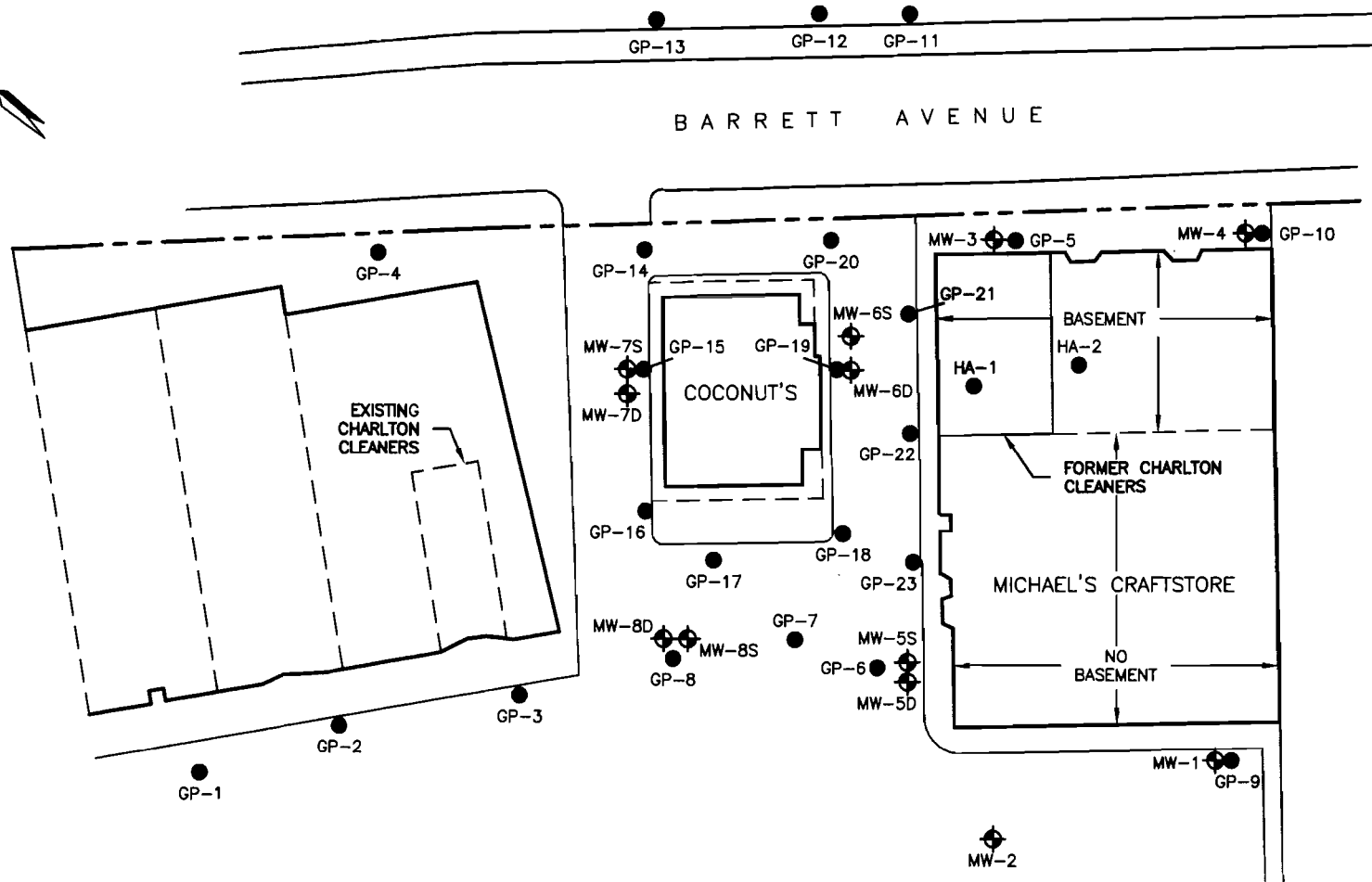
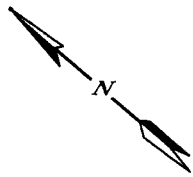
KIOP FOREST AVENUE, L.P.
FOREST AVENUE SHOPPERS TOWN
STATEN ISLAND, NEW YORK

AREA MAP

DATE	REVISED	PREPARED BY:
		LEGGETTE, BRASHEARS & GRAHAM, INC.
		Professional Ground-Water and Environmental Engineering Services
		110 Corporate Park Drive
		Suite 112
		White Plains, NY 10604
		(914) 694-5711
DRAWN:	TLC	CHECKED: JW
		DATE: 3/25/03
		FIGURE: 1



NOT TO SCALE



LEGEND

- PROPERTY BOUNDARY
- EXISTING MONITOR WELL LOCATION
- GEOPROBE LOCATION

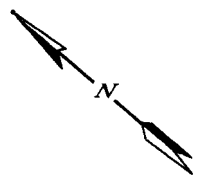
0 60
SCALE IN FEET

FORMER CHARLTON CLEANERS FACILITY FOREST AVENUE SHOPPERS TOWN BOROUGH OF STATEN ISLAND, CITY OF NEW YORK, NEW YORK

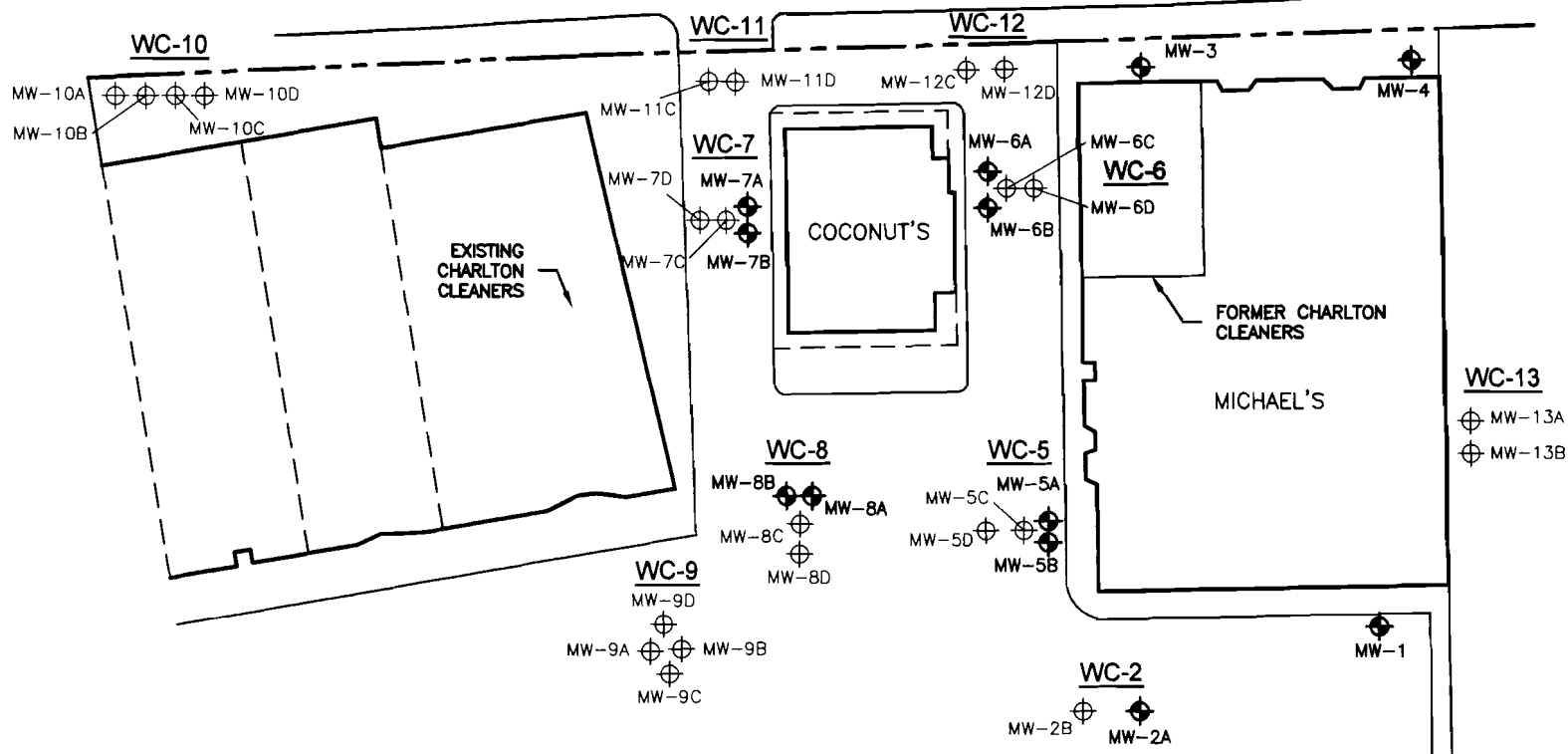
SITE PLAN

DATE	REVISED	PREPARED BY:	
		LEGGETTE, BRASHEARS & GRAHAM, INC.	
		Professional Ground-Water and Environmental Engineering Services	
		110 Corporate Park Drive	
		Suite 112	
		White Plains, NY 10604	
		(914) 694-5711	
DRAWN: TLC		CHECKED: JW	DATE: 3/25/03
			FIGURE: 2





BARRETT AVENUE



LEGEND

- PROPERTY BOUNDARY
- MW-2 EXISTING MONITOR WELL LOCATION
- ⊕ PROPOSED MONITOR WELL LOCATION
- WC-5 WELL CLUSTER IDENTIFICATION

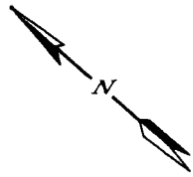


**FORMER CHARLTON CLEANERS FACILITY
FOREST AVENUE SHOPPERS TOWN
BOROUGH OF STATEN ISLAND, CITY OF NEW YORK, NEW YORK**

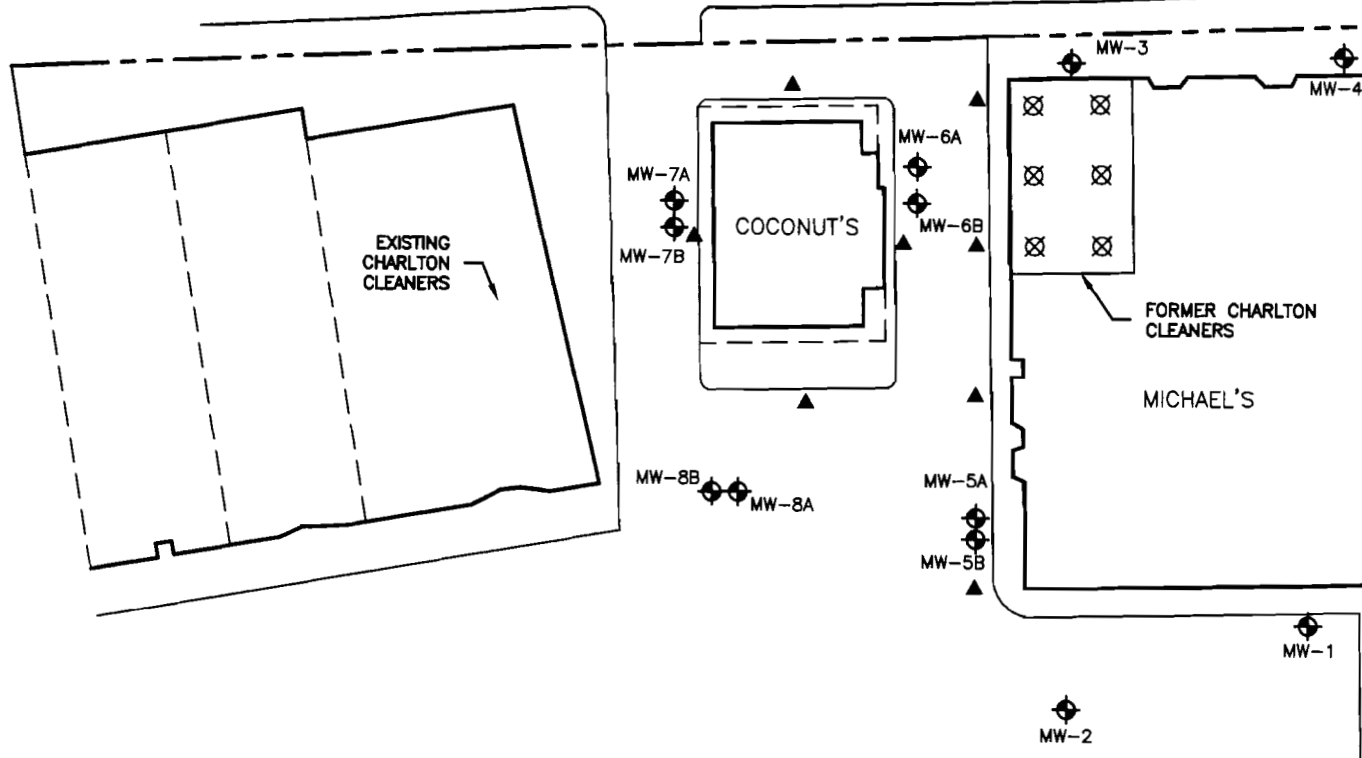
PROPOSED MONITOR WELL LOCATIONS

DATE	REVISED	PREPARED BY:	
		LEGGETTE, BRASHEARS & GRAHAM, INC.	
		Professional Ground-Water and Environmental Engineering Services	
		110 Corporate Park Drive	
		Suite 112	
		White Plains, NY 10604	
		(914) 694-5711	
DRAWN:		TLC	CHECKED: JW
		DATE:	3/25/03
		FIGURE:	3





BARRETT AVENUE



LEGEND

- PROPERTY BOUNDARY
- MW-2 EXISTING MONITOR WELL LOCATION
- ⊗ PROPOSED HAND-AUGER BORING LOCATION AND SOIL-GAS SAMPLING POINT
- ▲ PROPOSED SOIL-GAS SAMPLING POINT

0 60
SCALE IN FEET

**FORMER CHARLTON CLEANERS FACILITY
FOREST AVENUE SHOPPERS TOWN
BOROUGH OF STATEN ISLAND, CITY OF NEW YORK, NEW YORK**

**PROPOSED HAND-AUGER BORING LOCATION AND
SOIL-GAS SAMPLING POINT MAP**

DATE	REVISED	PREPARED BY:
		LEGGETTE, BRASHEARS & GRAHAM, INC.
		Professional Ground-Water and Environmental Engineering Services
		110 Corporate Park Drive
		Suite 112
		White Plains, NY 10604
		(914) 694-5711
DRAWN:	TLC	CHECKED: JW
		DATE: 3/25/03
		FIGURE: 4

