



1430 Broadway
10th Floor
New York, NY 10018

212.221.7822 PHONE
212.221.7840 FAX

www.TRCSolutions.com

January 30, 2014

Anthony C. Perretta
Public Health Specialist II
Bureau of Environmental Exposure Investigation
New York State Department of Health
ESP Corning Tower, Rm 1787
Albany, NY 12237

**Re: Work Plan for Assessment to Terminate SSDS Operations
Golden Horseshoe Shopping Center
Scarsdale, New York
VCP Site No. V-00309-3**

Dear Mr. Perretta:

Presented below is the work plan for assessment to terminate the sub-slab depressurization system (SSDS) operation at the Golden Horseshoe Shopping Center in Scarsdale, New York (the "Site"). The SSDS in operation at the Site was constructed and activated in May 2010. The installation of the SSDS was completed in accordance with the approved SSDS Site Management Plan (SMP) dated November 29, 2007 and Addendum No. 1 to the SSDS and SMP dated April 15, 2008. The primary objective of this scope of work is to perform a soil vapor intrusion (SVI) assessment to determine the feasibility of terminating the operation of the SSDS.

TRC will perform the following tasks under this work plan:

Task 1 – Sub-Slab Soil Vapor Sampling/Indoor Air Sampling

During the current heating season, TRC will shut down the two (2) SSDS blowers located on the roof of the Post Office for thirty (30) days. At the end of the thirty (30) days, TRC will perform the following work:

1. TRC will complete a pre-sampling chemical inventory and inspection. In accordance with the New York State Department of Health (NYSDOH) "Guidance for Evaluating Soil Vapor Intrusion in the State of New York" (October 2006) ("Guidance Document"), sample locations and adjacent spaces will be inspected and screened with a parts per billion (ppb) range photoionization detector (PID) to determine if interfering conditions such as open containers of cleaning supplies or petroleum products are present. The "Indoor Air Quality Questionnaire and Building Inventory" form found in Appendix B of the NYSDOH Guidance will be completed.

2. If interfering conditions are noted, TRC will attempt to control the interfering conditions by removing the source or ensuring that containers are tightly sealed.
3. The heating system will be operating in a manner consistent with normal operating conditions when the buildings are occupied.
4. TRC will collect eight-hour sub-slab vapor samples and co-located indoor air samples at the seven (7) existing SSDS monitoring points located in the Post Office building and adjacent properties (Seven Woks Restaurant, Leah's Hair Salon, and Wilmot Dry Cleaners). Refer to Figure 1 for the proposed sampling locations. Also, one (1) eight-hour duration outdoor ambient air sample will be collected from outside the Post Office building during the sampling event. Predominant wind direction will be recorded during the sampling event. Samples will be collected in individually certified 6 Liter SUMMA canisters with 8 hour flow controllers. Sub-slab vapor, indoor air, and ambient air sampling will be performed in accordance with the NYSDOH Guidance.
5. The samples will be shipped overnight to a NYSDOH ELAP certified laboratory for low level sensitivity analysis (i.e., low level detection limits, in accordance with NYSDOH guidance) for tetrachloroethene (PCE), trichloroethene (TCE), cis-1,2-dichloroethene (cis-1,2-DCE), trans-1,2-dichloroethene (trans-1,2-DCE), vinyl chloride (VC), and 1,1-dichloroethene (1,1-DCE) by Method TO-15.
6. TRC will restart the SSDS following sampling completion.

Task 2 – Report Preparation

TRC will prepare an SVI Assessment Report, which will summarize the results of the indoor air, sub-slab vapor and outdoor air sampling and include comparisons of the sub-slab vapor and co-located indoor air samples to the matrices provided in Section 3.4 of the NYSDOH Guidance Document. Based on the results, TRC will provide a recommendation regarding operation of the SSDS for review and approval of the NYSDEC and NYSDOH.

If there are any questions, please do not hesitate to contact me at (212) 221-7822.

Very truly yours,

TRC ENGINEERS, INC.

Jennifer DiPilato

Jennifer DiPilato, PE
Senior Project Manager



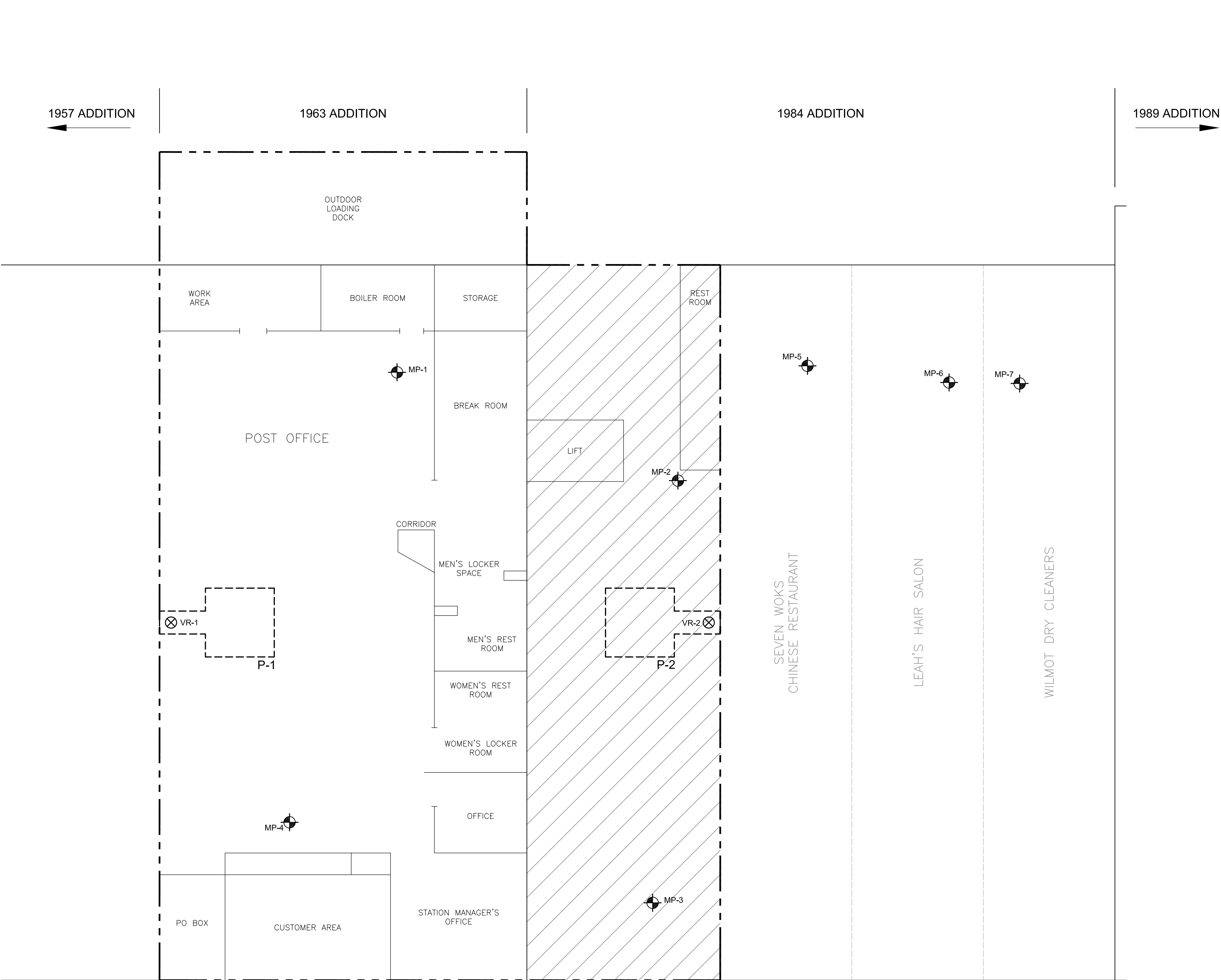
January 30, 2014
Mr. Anthony C. Perretta
Work Plan for Assessment to Terminate SSDS Operations
NYSDEC Voluntary Cleanup Program Site Number V-00309-3
Golden Horseshoe Shopping Center, Scarsdale, NY
Page 3 of 3

cc: K. Maloney (NYSDEC)
L. Fine (SSCA)
D. Schmidt (TRC)

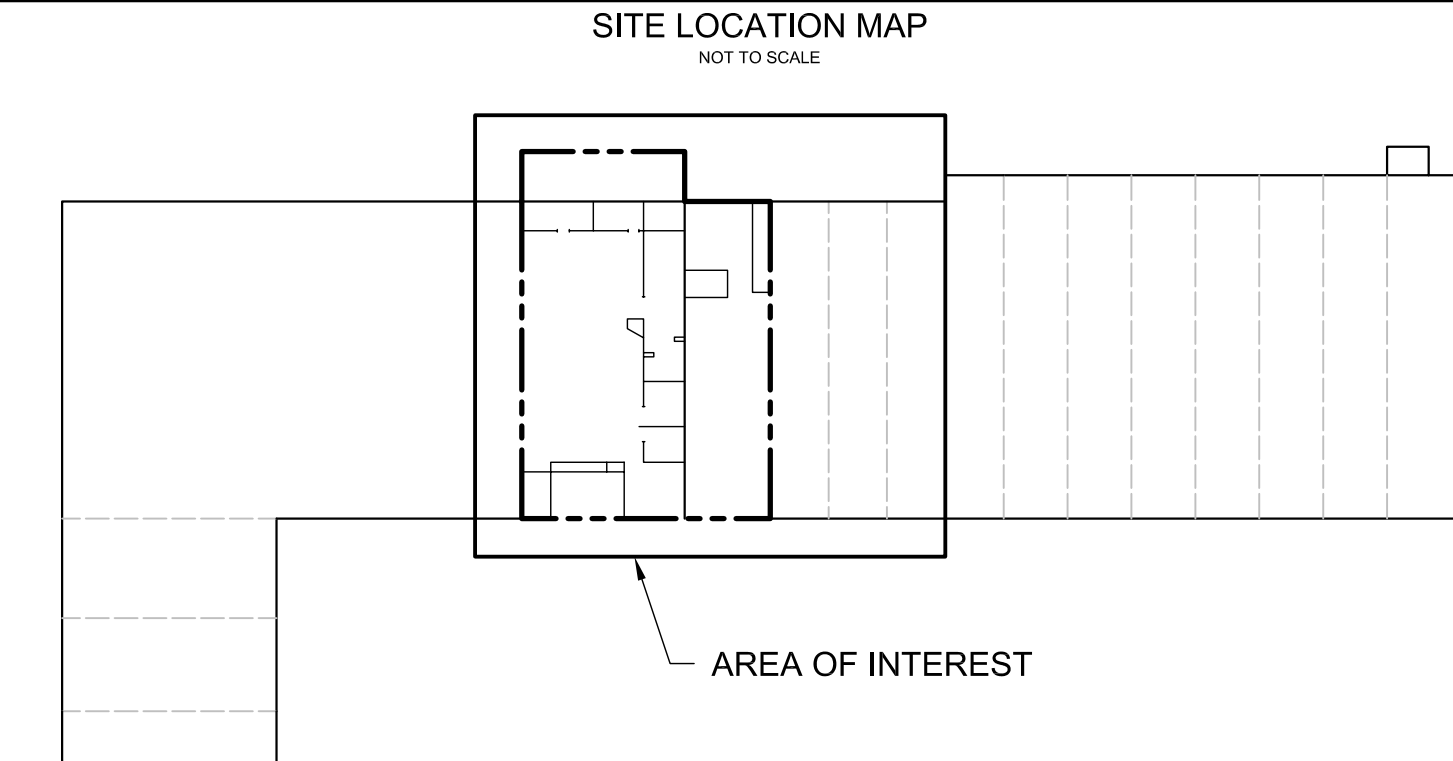
Enclosures: Figure 1 – Sub-Slab Pit and Monitoring Point Locations



Path Name: I:\Projects\150515 - Golden Horse Shoe SSIS\CAD\Figures\3-SSP AND MON PT LOCATIONS TRC 050710.dwg -- Date\Time: Fri, 07 May 2010 -- 11:02pm -- User Name: hdelgado -- Layout: Tab: 22X34



- LEGEND (SYMBOLS NOT TO SCALE)
- POST OFFICE BOUNDARY
 - MP-1 APPROXIMATE SUB-SLAB MONITORING POINT LOCATION AND IDENTIFICATION NUMBER
 - VR-1 APPROXIMATE RISER LOCATION AND IDENTIFICATION NUMBER. EXTENDS THROUGH ROOF TO SUCTION FAN
 - P-1 APPROXIMATE SUB-SLAB DEPRESSURIZATION SYSTEM PIT LOCATION AND IDENTIFICATION NUMBER (BENEATH FLOOR SLAB)
 - AREA OF POST OFFICE FORMERLY OCCUPIED BY DRY CLEANER



REVISIONS				
	NO.	DESCRIPTION	BY	DATE

PAPER SIZE: 22" X 34"



DESIGN BY: JD
DRAWN BY: HD
CHECK BY: DSG
DATE: MAY 2010
SCALE: NONE
PROJECT NUMBER: 150515.0000.00000

PROJECT NAME: GOLDEN HORSESHOE SHOPPING CENTER SCARSDALE, NEW YORK	DWG. NO. 1
DRAWING TITLE: SUB-SLAB PIT AND MONITORING POINT LOCATIONS	