

20 February 2012

Michael J. Hinton, P.E.
Environmental Engineer 2
New York State Department of Environmental Conservation
Division of Environmental Remediation - Region 9
270 Michigan Avenue
Buffalo, New York 14203



RE: Monthly Progress Report - January 2012
Greif, Inc. Facility - Tonawanda, New York
NYSDEC VCP Number V00334-9

***Key Actions
This Period:***

- Performed routine operations and maintenance (O&M) on the Pilot Sub-Slab Depressurization (SSD) system and dense, non-aqueous phase liquid (DNAPL) recovery equipment. Collected and recorded relevant data. Data collected included liquid level measurements in selected Site wells and monitoring points (Table 1), vacuum readings in vacuum monitoring points (Table 2), and treatment system operational data (Table 3). The locations of wells and other sampling and monitoring points are presented in Figure 1. A map showing the estimated distribution of vacuum beneath the floor slab on 20 January 2012 is presented in Figure 2.
- Greif received draft deed restrictions from the NYSDEC's consultant.

***Problems/
Resolutions:***

- Water was observed inside system piping while isolating Pilot SSD System headers PG-101 and PG-104. The water appears to be due to condensation where vapors are being inadvertently cooled at one or more points inside SSD System piping. The most likely location for the cooling is the section of piping between the main building and the treatment building. ERM removed approximately 27-gallons of water condensate from the blower's knock-out pot. ERM is reviewing system data and evaluating options to address the water accumulation during upcoming modifications to the SSD System as

proposed in the Monthly Progress Report dated 18 November 2011. ERM is waiting for a response/approval from the NYSDEC on the proposed SSD System modifications. NYSDEC's response will allow us to complete the construction phase of the approved remedial action.

Analytical Data Received: • None.

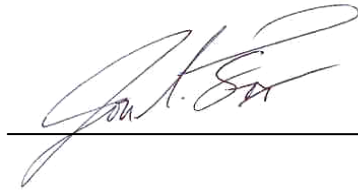
Documents Submitted: • Monthly Progress Report for December 2011 dated 19 January 2012.

Anticipated Actions – February 2012:

- Routine O&M of the Pilot SSD System and DNAPL recovery equipment and adjustment of extraction and recovery parameters as necessary based on Site data and observations.
- Preparation for SSD System modifications to complete remedial construction activities at the Site after receipt of NYSDEC and Client approval.
- Coordination with the NYSDEC and Greif on their preparation of a deed restriction document for the Site.

NYSDEC-Approved Field Decisions: • None.

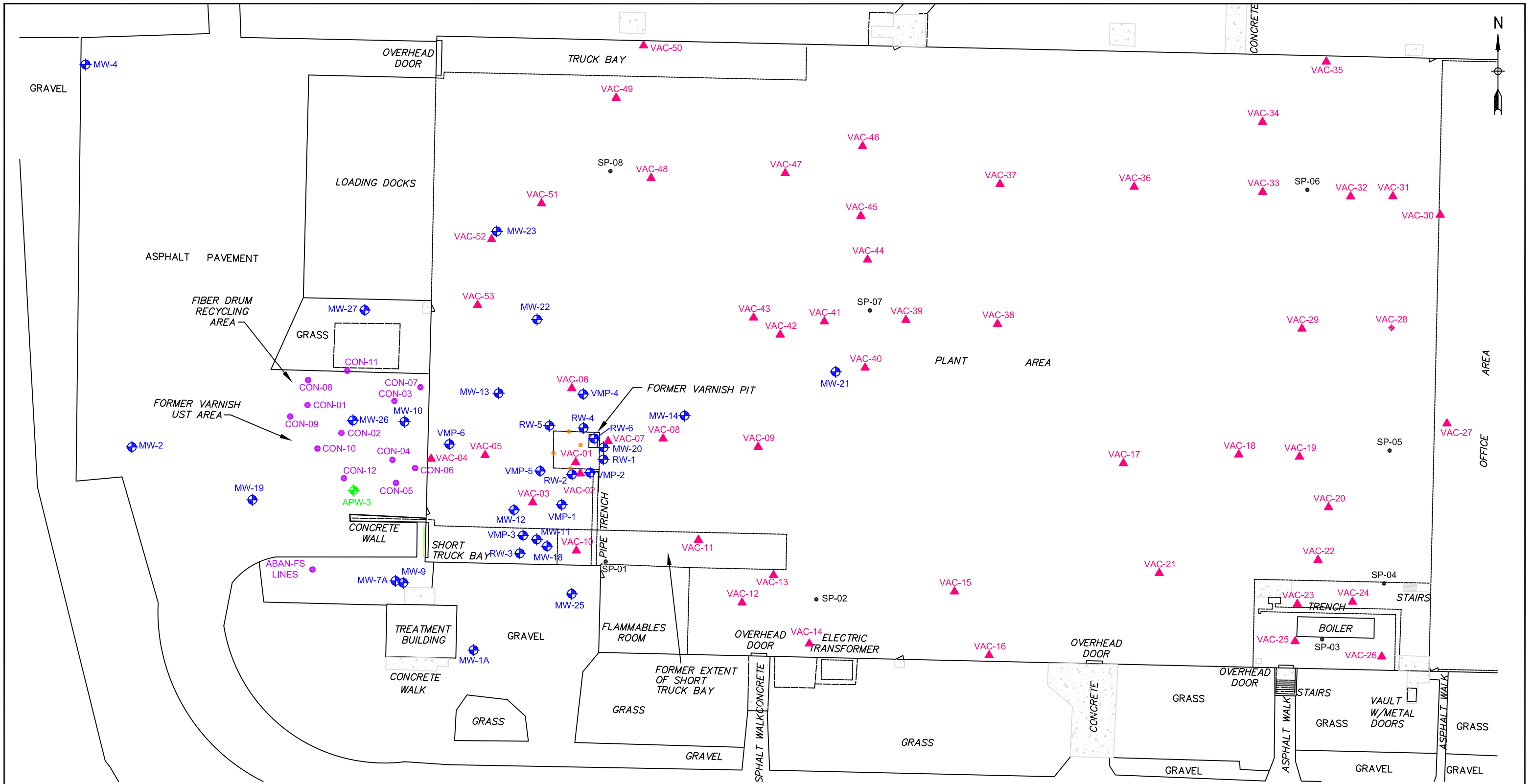
Prepared By:



Jon S. Fox, P.G.
Senior Consultant

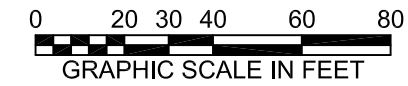
Date: 20 February 2012

Cc: Pete Gruene (Sonoco)
Mike Sunderland (Sonoco)
Patrick Wolfe (Greif)
Gregory Sutton, P.E. (NYSDEC)
James Charles, Esq. (NYSDEC)
Matt Forcucci (NYSDOH)
A. Joseph White (NYSDEC)
John Kuhn (ERM)
John Mohlin, P.E. (ERM)
Rob Sents (ERM)
Jason Reynolds (ERM)

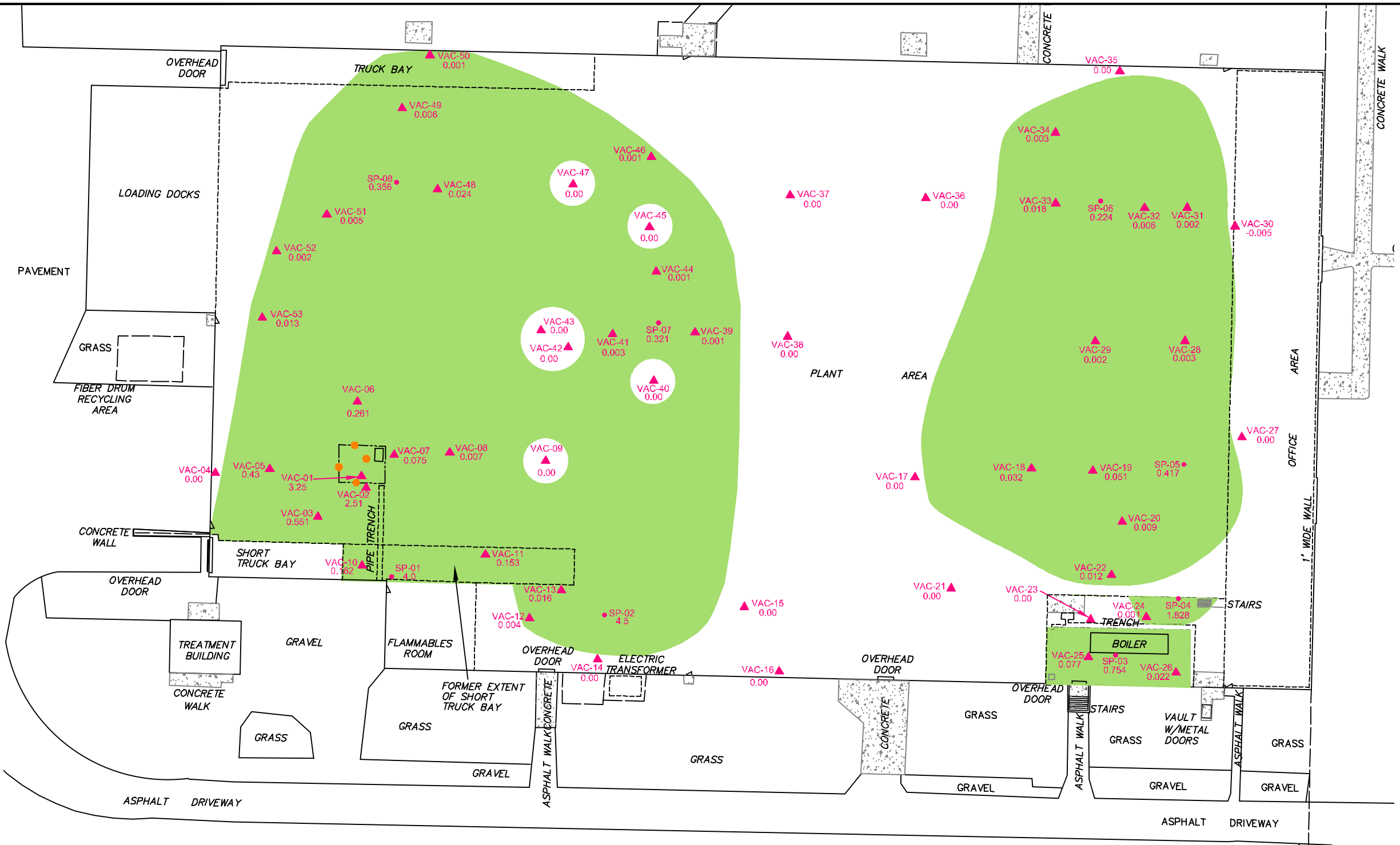


LEGEND

- ▲ Vacuum Monitoring Point Location
- ⊕ Monitoring or Recovery Well Location
- ⊕ Antenna Placement Well
- Suction Point Location
- Horizontal Suction Point Location
- Soil Confirmation Location
- Former Varnish Pit
- ▴ Man Door
- ▭ Concrete Pad

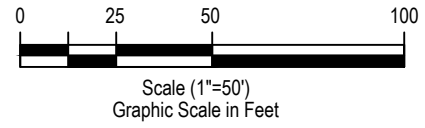


TITLE		
SAMPLE AND MEASUREMENT LOCATIONS GREIF FACILITY-TONAWANDA, NEW YORK NYSDEC VCP NUMBER V00334-9		
PREPARED FOR		
SONOCO PRODUCTS COMPANY		
Environmental Resources Management	SCALE	FIGURE
	GRAPHIC	1
DATE		
06-Oct-2011		
DRAWN:	JOB NO.:	FILE NAME:
EMF	0129254.01	0129254-01-007

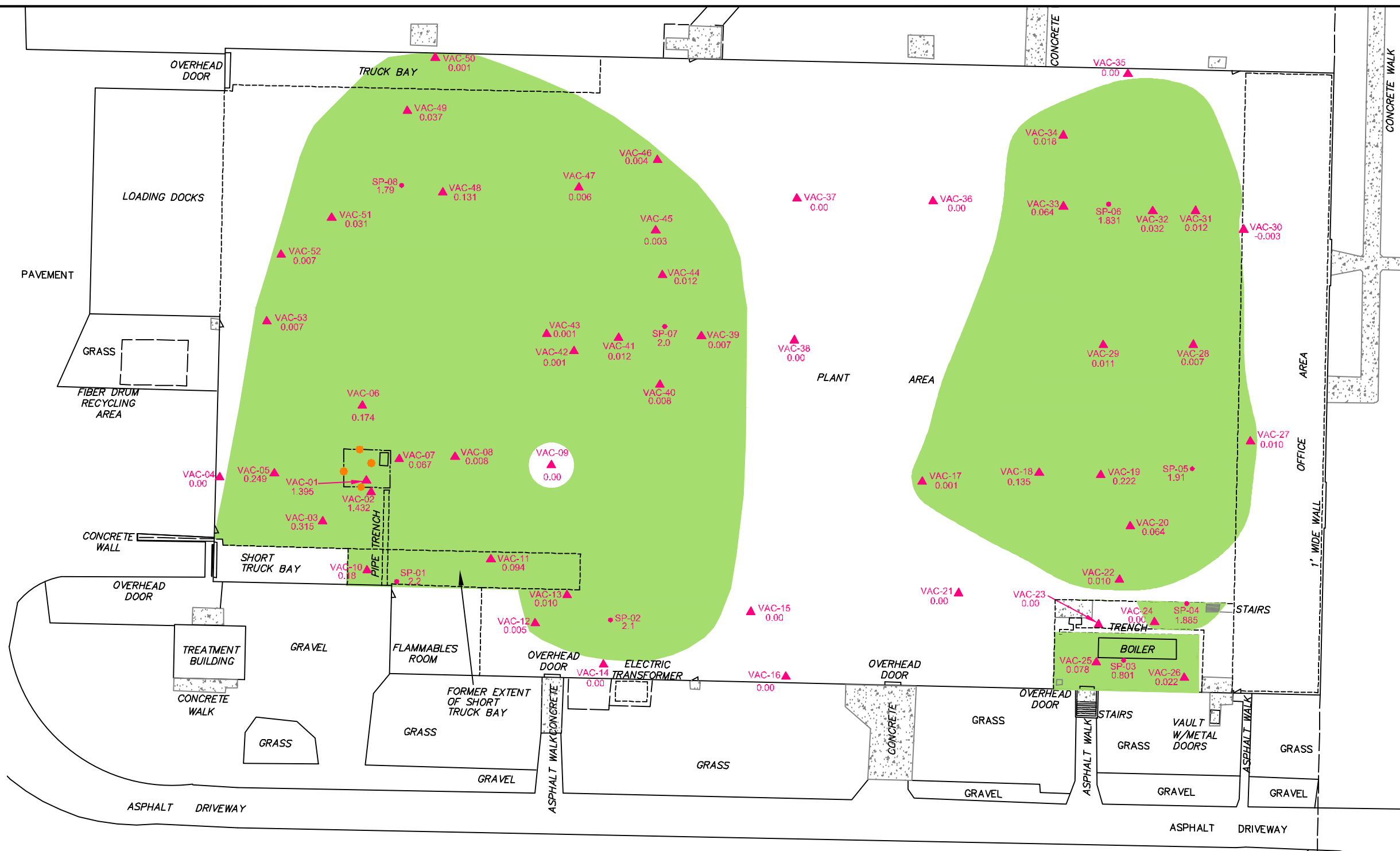


- LEGEND**
- Horizontal Suction Point Location
 - Vertical Suction Point Location
 - ▲ Vacuum Monitoring Point Location (vacuum in " H₂O)
 - NM Not Measured
 - Estimated Extent of Sub-Floor Vacuum
 - Former Varnish Pit
 - Man Door
 - Concrete Pad

NOTES:
1. " H₂O = inches of water column

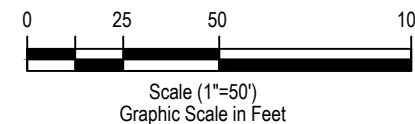


TITLE PRE-CONDENSATE REMOVAL SUBSURFACE VACUUM DISTRIBUTION 20 JANUARY 2011 GREIF FACILITY-TONAWANDA, NEW YORK			
PREPARED FOR SONOCO PRODUCTS COMPANY			
DRAWN: EMF	JOB NO.: 01127477.01	FILE NAME: 0129254-01-017	DATE: 01-FEB. 2012
Environmental Resources Management 			SCALE GRAPHIC FIGURE 2



- LEGEND**
- Horizontal Suction Point Location
 - Vertical Suction Point Location
 - ▲ Vacuum Monitoring Point Location (vacuum in " H₂O)
 - NM Not Measured
 - Estimated Extent of Sub-Floor Vacuum
 - Former Varnish Pit
 - Man Door
 - Concrete Pad

NOTES:
 1. " H₂O = inches of water column



TITLE POST-CONDENSATE REMOVAL SUBSURFACE VACUUM DISTRIBUTION 20 JANUARY 2011 GREIF FACILITY-TONAWANDA, NEW YORK			
PREPARED FOR SONOCO PRODUCTS COMPANY			
DRAWN: EMF	JOB NO.: 01127477.01	FILE NAME: 0129254-01-018	DATE: 01-FEB. 2012
Environmental Resources Management 			SCALE GRAPHIC FIGURE 2

Table 1
Summary of Non-Aqueous Phase Liquid Thicknesses in Wells
Greif Facility - Tonawanda, New York
NYSDEC VCP Number V00334-9

WELL	RW-1 (ft.) (DNAPL)	RW-2 (ft.) (DNAPL)	RW-4 (ft.) (DNAPL)	RW-5 (ft.) (LNAPL)	RW-6 (ft.) (DNAPL)	VMP-2 (ft.) (DNAPL)	VMP-5 (ft.) (DNAPL)	MW-20 (ft.) (DNAPL)	MW-23 (ft.) (LNAPL)
Date									
19-May-08	0.00	0.00	0.00	0.00	NI	0.00	HS	0.09	0.14
30-May-08	0.00	0.16	0.00	0.00	NI	0.00	HS	0.03	0.14
16-Jun-08	0.00	0.14	0.00	0.02	NI	0.00	0.02	0.07	0.13
25-Jun-08	0.00	0.16	0.00	0.02	NI	0.00	HS	0.07	0.26
3-Jul-08	0.00	0.16	0.00	0.02	NI	0.00	HS	0.09	0.18
23-Jul-08	0.00	0.16	0.00	0.02	NI	0.00	HS	0.10	0.09
6-Aug-08	0.03	0.16	0.00	0.04	NI	0.00	HS	0.11	0.09
19-Aug-08	0.03	0.16	0.00	0.04	NI	0.00	HS	0.13	0.11
21-Nov-08	HS	0.11	0.00	0.00	NI	0.00	HS	0.22	0.29
17-Dec-08	HS	0.11	0.00	0.00	NI	0.00	HS	0.24	0.29
14-Jan-09	0.00	0.00	0.00	0.00	NI	0.00	0.00	HS	0.13
26-Feb-09	0.00	0.00	0.00	0.00	NI	0.00	0.00	0.01	0.24
12-Mar-09	0.00	0.00	0.00	0.00	NI	0.00	0.00	0.00	0.09
22-Apr-09	0.00	0.00	0.00	0.00	NI	0.00	0.00	0.00	0.11
13-May-09	0.00	0.00	0.00	0.00	NI	0.00	0.00	0.00	0.09
25-Jun-09	NM	0.00	NM	0.00	NI	0.00	0.00	NM	0.12
17-Jul-09	NM	0.00	NM	0.00	NI	0.00	0.00	NM	0.11
27-Aug-09	0.00	0.00	0.00	0.00	NI	0.00	NM	NM	0.09
25-Sep-09	0.00	0.00	0.00	0.00	NM	0.00	NM	0.04	0.11
16-Oct-09	NM	0.00	0.00	0.00	NM	0.00	NM	NM	0.11
19-Nov-09	NM	0.00	NM	NM	NM	0.00	NM	NM	0.21
17-Dec-09	0.00	0.00	NM	NM	NM	0.00	0.00	0.01	0.23
14-Jan-10	0.00	0.00	0.00	NM	NM	0.00	0.00	0.01	0.21
17-Feb-10	0.00	0.00	NM	NM	NM	0.00	0.00	0.01	0.17
18-Mar-10	0.00	0.00	0.00	0.00	NM	0.00	0.00	0.01	0.09
13-Apr-10	0.00	0.00	0.00	0.00	0.49	0.00	0.00	0.01	0.12
18-May-10	0.00	0.00	0.00	0.00	0.53	0.00	NM	0.01	0.08
15-Jun-10	0.00	0.00	0.00	NM	0.01*	0.00	0.00	0.01	0.07
14-Jul-10	0.00	0.00	0.00	0.00	0.04	0.00	0.00	0.00	0.07
13-Aug-10	0.00	NM	0.00	NM	0.08	0.00	0.00	HS	0.10
14-Sep-10	0.00	NM	0.00	NM	0.04	0.00	0.00	NM	0.06
14-Oct-10	0.00	0.00	0.00	0.00	0.05	0.00	0.00	0.01	0.08
22-Nov-10	0.00	0.00	NM	0.00	0.04	0.00	0.00	0.01	0.14
15-Dec-10	0.00	0.00	0.00	NM	0.01	0.00	NM	0.01	0.09
18-Jan-11	0.00	0.00	0.00	NM	HS	0.00	NM	0.02	0.09
21-Feb-11	NM	0.00	0.00	0.00	0.03	0.00	0.00	0.03	0.04
11-Mar-11	0.00	0.00	0.00	0.00	0.21	0.00	0.00	0.04	0.03
21-Apr-11	0.00	0.00	0.00	0.00	0.00	0.00	0.00	0.00	0.04
24-May-11	0.00	0.00	0.00	NM	0.15	0.3	0.00	0.1	0.1
21-June-11	0.00	0.00	0.00	0.00	0.1	0.00	0.00	0.03	0.08
21-July-11	0.00	0.00	0.00	NM	HS	0.00	0.00	0.01	0.06
29-Aug-11	0.00	0.00	0.00	0.00	0.06	0.00	0.00	0.00	HS
26-Sept-11	0.00	NM	0.00	0.00	0.10	0.00	NM	0.04	HS
28-Oct-11	0.00	0.00	NM	0.00	0.03	0.00	0.00	0.02	HS
18-Nov-11	0.00	0.00	NM	NM	HS	0.00	0.00	0.01	0.04
22-Dec-11	0.00	0.00	NM	NM	0.03	0.00	0.00	0.02	0.06
20-Jan-12	0.00	0.00	0.00	0.00	HS	0.00	0.00	0.02	HS

Notes:

All values are reported in feet as measured with an electronic interface probe.

HS - heavy sheen but no measureable thickness.

NM - not measured; was covered with pallets or other surface obstruction.

NI - not installed as of this date.

* - Product level after ERM initiated DNAPL recovery test

Table 2
Summary of Vacuum Readings
Greif, Inc. - Tonawanda, NY
NYSDEC VCP Number V00334-9

Location	Vac-01	Vac-02	Vac-03	Vac-04	Vac-05	Vac-06	Vac-07	Vac-08	Vac-09	Vac-10	Vac-11	Vac-12	Vac-13	Vac-14
Date														
16-Jun-10	0.1175	0.1375	0.1375	0	0.1425	0.1625	0.095	0.0325	0	0.10	0.0950	0	NM	0
14-Jul-10	1.65	1.45	0.47	0	0.68	0.46	0.125	0.0525	0	0.1625	0.16	0	0	0
13-Aug-10	1.3	1.25	0.46	0	0.65	0.45	0.135	0.07	0	0.19	0.175	0	0	NM
14-Sep-10	0.8	NM	0.29	0	0.28	0.195	0.055	0.015	0	NM	0.125	0	0	0
14-Oct-10	0.82	0.84	0.29	0	0.28	0.185	0.05	0.015	0	0.1375	0.12	0	0	NM
22-Nov-10	0.29	2.3	0.49	0	0.35	0.28	0.105	0.0025	0	0.155	0.135	0	NM	NM
16-Dec-10	0.26	2.1	0.42	0	0.2	0.14	0.075	0	0	0.13	0.105	0	0	NM
19-Jan-11	0.77	2	0.41	0	0.24	0.18	0.1	NM	0	0.155	0.125	0	NM	0
21-Feb-11	1.35	1.8	0.4	0	NM	0.17	0.1	0	0	NM	0.12	NM	0	0
11-Mar-11	1.8	2.25	0.5	0	NM	0.22	NM	0.01	0	NM	0.12	0	0	NM
21-Apr-11	1.35	2	0.45	0	0.25	0.2	0.1025	0	0	0.155	0.135	0	0	0
24-May-11	2.15	2.05	0.47	0	0.35	0.28	0.1325	0.0275	0	0.1625	0.15	0	NM	0
21-Jun-11	2.05	2.1	0.46	0	0.45	0.4	0.165	0.0575	0	0.19	0.18	0	NM	0
21-Jul-11	2.55	2.25	0.46	0	0.62	0.55	0.2	0.1	0	0.21	0.21	0	0	0
29-Aug-11	2.3	2.2	0.44	0	0.48	0.4	0.155	0.055	0	0.15	0.145	0	0	0
26-Sep-11	1.3	NM	0.46	0	0.44	0.36	0.155	0.06	0	0.1775	0.16	0	0.0025	0
28-Oct-11	1	1.6	0.33	0	0.2125	0.195	0.0925	0.005	0	0.1125	0.1	0	0	0
18-Nov-11	NM	1.3	0.28	0	0.135	0.13	0.06	0.005	0	0.1	0.09	0	0	0
22-Dec-11	1.58	1.464	0.343	0	0.245	0.171	0.069	0.008	0	0.114	0.097	0.002	0.006	0
20-Jan-12	1.395	1.432	0.315	0	0.249	0.174	0.067	0.008	0	0.108	0.094	0.005	0.01	0

Location	Vac-15	Vac-16	Vac-17	Vac-18	Vac-19	Vac-20	Vac-21	Vac-22	Vac-23	Vac-24	Vac-25	Vac-26	Vac-27	Vac-28
Date														
16-Jun-10	0	NM	0.0025	0.25	0.42	0.175	0	0.0075	0	0	0.089	0.020	0.005	0.0175
14-Jul-10	0	0	NM	0.31	0.54	0.205	0	0	NM	NM	NM	NM	0.005	0.01
13-Aug-10	0	0	0.0025	0.31	0.52	NM	0	0	0	0	0.08	0.02	0.005	0.025
14-Sep-10	0	0	0	0.165	0.31	0.075	0	0	0	0	0.08	0.015	0.005	0.005
14-Oct-10	NM	0	0	0.18	0.35	0.105	0	0	0	0	0.08	0.015	0.0025	0.005
22-Nov-10	0	0	0	0.2	0.35	0.1	0	0	0	0	0.08	0.02	0.0025	0.0025
16-Dec-10	0	0	0	0.145	0.29	0.08	0	0	0	0	0.055	0.01	0	0.0025
19-Jan-11	0	0	0	0.15	0.29	0.08	0	0	0	0	0.075	0.02	0	0.0075
21-Feb-11	0.005	0	NM	0.18	0.35	NM	0	0.0125	0	0	0.0675	0.035	0.015	0.01
11-Mar-11	0	0	0	0.1875	0.34	0.12	0	0	0	0	0.08	0.025	0.01	0.02
21-Apr-11	0	0	0	0.18	0.32	0.105	0	0.01	0	0	0.08	0.0325	0.01	0.0125
24-May-11	0	0	0	0.215	0.36	0.1475	0	0	0	0	0.0775	0.03	0.015	0.0175
21-Jun-11	0	0	NM	0.23	0.39	0.16	0	0	0	0	0.085	0.03	0.02	0.02
21-Jul-11	0	0	NM	0.24	0.39	0.17	0	0.0175	0	0	0.1	0.025	0.02	0.035
29-Aug-11	0	0	NM	0.21	0.32	0.12	0	0	0	0	0.09	0.0225	0.0175	0.02
26-Sep-11	0	0	NM	0.205	0.32	0.12	0.0025	0	0	0	0.0725	0.025	0.0175	0.0175
28-Oct-11	0	0	0	0.15	0.24	0.0525	0	0	0	0	0.08	0.03	0.01	0.01
18-Nov-11	0	0	0	0.14	0.21	0.06	0	0.0075	0	0	0.085	0.0275	0.015	0.015
22-Dec-11	0	0	0.003	0.138	0.227	0.06	0	0.01	0	0.003	0.083	0.024	0.012	0.009
20-Jan-12	0	0	0.001	0.135	0.222	0.064	0	0.01	0	0	0.078	0.022	0.01	0.007

Table 2
Summary of Vacuum Readings
Greif, Inc. - Tonawanda, NY
NYSDEC VCP Number V00334-9

Location	Vac-29	Vac-30	Vac-31	Vac-32	Vac-33	Vac-34	Vac-35	Vac-36	Vac-37	Vac-38	Vac-39	Vac-40	Vac-41	Vac-42
Date														
16-Jun-10	0.040	0	0	0.040	0.0675	0.0225	NM	0	0.030	NM	0.025	0.0275	0.0525	0.0025
14-Jul-10	NM	NM	NM	NM	0.125	0.0325	0	0	0	NM	0.03	0.0325	NM	0.005
13-Aug-10	0.0725	0	0.0375	0.0875	0.1625	0.05	0	0	0	0	0.05	0.04	0.0875	0.015
14-Sep-10	0.025	0	0.01	0.03	0.06	0.015	0	0	0	0	0.02	0.0075	0.025	0.0025
14-Oct-10	0.025	0	0.005	0.03	0.055	0.01	0	0	0	0	0.01	0.01	0.025	NM
22-Nov-10	0.015	0	0.0025	0.025	0.065	0.01	0	NM	0	0	0.005	NM	0.015	NM
16-Dec-10	0.02	NM	0.005	0.035	0.055	0.015	0	NM	0	0	0.005	NM	0.0125	NM
19-Jan-11	0.02	NM	0.0075	0.03	0.04	0.015	0	0	0	0	0.01	NM	0.0125	NM
21-Feb-11	0.015	0	0.01	0.035	0.0325	NM	NM	0	0	0.0025	0.015	0.01	0.0175	NM
11-Mar-11	0.02	0	0.02	0.0425	0.0625	0.03	0	0	0	0	0.0225	0.02	0.02	NM
21-Apr-11	0.0175	0	0.01	0.035	0.06	NM	NM	0	0	0	0.01	0.005	0.0125	0
24-May-11	0.0325	0	0.0225	0.0525	0.075	NM	NM	0	0	NM	0.0125	NM	0.035	0
21-Jun-11	0.04	0	0.03	0.075	0.11	0.04	NM	0	0	0	0	0.0225	0.0425	0
21-Jul-11	0.055	0	0.05	0.1025	0.17	0.06	0	0.0125	0	0	0.0325	0.035	0.08	0.0075
29-Aug-11	0.0375	0	0.0325	0.07	0.13	0.0375	0	0	0	0	NM	0.02	0.035	0.05
26-Sep-11	0.045	0	0.03	0.06	0.1175	0.035	0	0	NM	0	0	NM	NM	0.01
28-Oct-11	NM	0	0.0075	0.0375	0.0775	0.0775	NM	0	0	0	0.0075	0.005	0.01	NM
18-Nov-11	NM	0	0.01	0.0325	0.065	0.0175	NM	0	0	0	0.0075	0	0.01	NM
22-Dec-11	0.014	0.005	0.012	0.032	0.077	0.021	0	0	0	0	0.008	0.011	0.014	0.001
20-Jan-12	0.011	-0.003	0.012	0.032	0.064	0.018	0	0	0	0	0.007	0.008	0.012	0.001

Location	Vac-43	Vac-44	Vac-45	Vac-46	Vac-47	Vac-48	Vac-49	Vac-50	Vac-51	Vac-52	Vac-53
Date											
16-Jun-10	0.0025	0.0425	0.015	0.0125	NM	0.2125	0.0925	0	0.080	0.0125	0.0125
14-Jul-10	0	NM	NM	0.0125	NM	0.21	0.0875	NM	0.8	0.0175	0.0225
13-Aug-10	0	NM	NM	NM	NM	0.22	0.0925	0	0.085	NM	0.0225
14-Sep-10	0	NM	NM	0.0025	NM	0.1275	0.05	0	0.04	0.005	0
14-Oct-10	NM	NM	0	NM	NM	0.11	0.0375	0	0.03	0	0
22-Nov-10	0	NM	0	0	NM	0.135	0.0475	0	0.03	0.0025	0
16-Dec-10	0	0.015	0	0	NM	0.09	0.02	0	NM	0	0
19-Jan-11	0	NM	0	0	NM	0.12	0.035	0	0.03	0.0025	0
21-Feb-11	0	0.0325	0.01	0	0	0.125	0.035	0	0.03	0	0
11-Mar-11	0	NM	0.02	NM	0.005	0.16	0.0575	NM	0.05	0.03	0.01
21-Apr-11	0	NM	0	NM	0	0.1375	0.045	NM	0.025	0	0
24-May-11	0	0.03	0.005	NM	0.0075	0.175	0.06	0	0.055	0.005	0.0125
21-Jun-11	NM	NM	0.0175	NM	0.02	0.195	0.0675	0	0.065	0.0175	0.03
21-Jul-11	0.0125	0.0525	0.0375	0.025	0.035	0.235	0.0875	0	0.07	0.02	0.06
29-Aug-11	0	0.0325	NM	NM	NM	0.185	0.07	0	0.06	0.03	0.09
26-Sep-11	0.0075	NM	0.005	NM	0.0125	0.17	0.07	0	0.055	0.175	0.0325
28-Oct-11	0	0.0075	0	NM	0.0075	0.1225	0.03	0	0.03	0	0.0025
18-Nov-11	0	NM	0	0	0	0.09	0.03	0	0.0275	0.005	0.005
22-Dec-11	0.001	0.014	0.001	0.004	0.005	0.131	0.036	0.001	0.034	0.009	0.01
20-Jan-12	0.001	0.012	0.004	0.004	0.006	0.131	0.037	0.001	0.031	0.007	0.007

Notes:

- All vacuum and/or pressure readings are reported in inches of water column ("H₂O).
 NM = not measured; was covered with pallets or other surface obstructions

Table 3
Summary of Treatment System Data
Greif Facility - Tonawanda, New York
NYSDEC VCP Number V00334-9
Page 1 of 2

Location	Header Vacuum						Header Air Flow					
	PG-101	PG-102	PG-103	PG-104	PG-105	PG-106	PG-101	PG-102	PG-103	PG-104	PG-105	PG-106
Units	" H ₂ O	" H ₂ O	" H ₂ O	" H ₂ O	" H ₂ O	" H ₂ O	cfm	cfm	cfm	cfm	cfm	cfm
Date												
17-Dec-09	NF	11.5	NM	NF	NF	NF	NF	NM	NM	NF	NF	NF
14-Jan-10	NF	40	NM	NF	NF	NF	NF	94	NM	NF	NF	NF
17-Feb-10	NF	4.2	NM	NF	NF	NF	NF	16	NM	NF	NF	NF
18-Mar-10	NF	1.95	NM	NF	NF	NF	NF	15	NM	NF	NF	NF
13-Apr-10	NF	2.85	13.0	NF	NF	NF	NF	73	233	NF	NF	NF
18-May-10	NF	3.95	13.0	NF	NF	NF	NF	83	212	NF	NF	NF
15-Jun-10	NF	2.60	15.5	NF	NF	NF	NF	65	225	NF	NF	NF
14-Jul-10	NM	1.75	4.10	NM	NM	NF	NM	26	75	NM	NM	NF
13-Aug-10	3.75	1.30	3.75	3.70	3.75	NF	67	19	73	65	82	NF
14-Sep-10	3.15	0.85	3.25	3.15	3.2	NF	68	18	74	65	72	NF
14-Oct-10	3.45	0.91	3.50	3.45	3.55	NF	70	32	76	66	72	NF
22-Nov-10	4.05	0.30	4.15	4.00	4.2	NF	76	14	80	70	82	NF
16-Dec-10	4.05	0.30	4.05	3.95	4.05	NF	70	14	85	75	94	NF
19-Jan-11	3.55	0.85	3.60	3.55	3.6	NF	82	39	135	92	164	NF
21-Feb-11	3.4	1.55	3.50	3.40	3.5	NF	116	36	105	78	144	NF
11-Mar-11	3.35	2.00	3.35	3.35	3.4	NF	98	73	65	76	141	NF
21-Apr-11	3.1	1.65	3.10	3.05	3.15	NF	97	84	103	106	170	NF
24-May-11	3.0	2.60	3.10	3.00	3.10	NF	89.61	53.94	89.61	71.34	87.87	NF
21-Jun-11	3.0	2.70	3.00	3.00	3.10	NF	115.71	90.48	106.14	87.87	96.57	NF
21-Jul-11	3.1	2.80	3.20	3.10	3.10	NF	113.97	87.00	100.92	80.48	140.07	NF
29-Aug-11	3.00	2.90	3.00	3.00	3.00	NF	106.14	69.60	93.09	75.17	100.31	NF
26-Sep-11	2.90	1.40	2.90	2.90	2.90	NF	95.70	63.95	105.27	90.48	127.02	NF
28-Oct-11	2.70	1.20	2.80	2.70	2.80	NF	63.51	39.67	101.79	86.13	114.84	NF
18-Nov-11	2.50	1.00	2.50	2.40	2.50	NF	73.08	55.68	107.88	72.65	115.71	NF
22-Dec-11	2.40	1.80	2.50	2.40	2.40	NF	63.95	52.20	62.21	72.65	72.65	NF
20-Jan-12	2.40	1.60	2.40	2.55	2.50	NF	99.18	74.39	92.22	74.39	108.75	NF

Location Key

PG-101 = Suction Pits 05, 06, 07 and 08 (pipe 1 of 2).

PG-102 = interior of former varnish pit.

PG-103 = horizontal suction points through former varnish pit's north, west, and south walls.

PG-104 = Suction Pit 05, 06, 07, and 08 (pipe 2 of 2).

PG-105 = Suction Pit 01 and 02.

PG-106 = not connected.

Notes:

- Vacuum and pressure data are reported in inches of water.
- Air flow data are based on measured air velocity and are reported in cubic feet per minute.
- NM = not measured
- NF = no flow as the piping associated with these measurement locations was not open/ connected at the time of measurement.

Table 3 (Continued)
Summary of Treatment System Data
Greif Facility - Tonawanda, New York
NYSDEC VCP Number V00334-9
Page 2 of 2

Location Units	Pre-Carbon			Mid-Carbon		Post-Carbon		
	Pressure " H ₂ O	Temp °F	PID ppm	Temp °F	PID ppm	Temp °F	PID ppm	Flow cfm
Date								
17-Dec-09	10.5	103	0.0	98	0.0	67	0.0	120
14-Jan-10	7.5	114	46.5	102	18.7	91	13.9	73
17-Feb-10	9.5	114	0.0	111	0.0	99	0.0	88
18-Mar-10	9.0	115	0.0	108	0.0	98	0.0	98
13-Apr-10	9.0	118	4.7	109	2.0	98	1.1	225
18-May-10	8.5	108	3.0	103	2.2	94	1.7	220
15-Jun-10	10.0	114	3.3	103	0.0	89	0.0	245
14-Jul-10	11.0	112	5.2	106	4.1	98	1.9	263
13-Aug-10	10.5	118	2.6	112	2.0	103	1.3	255
14-Sep-10	13.0	100	2.2	90	1.1	NM	0.5	461
14-Oct-10	15.5	104	0.3	104	0.0	NM	0.0	475
22-Nov-10	15.5	102	0.4	97	0.0	94	0.0	490
16-Dec-10	15.5	94	15.1	89	11.8	88	3.2	493
19-Jan-11	16.5	94	1.0	88	1.1	86	0.2	516
21-Feb-11	16	91	0.7	85	0	84	0	462
11-Mar-11	15.5	97	189	91	69.2	91	5.7	522
21-Apr-11	22.5	98	1.1	NM	0	97	0	220
24-May-11	28.5	111	6.3	NM	1.5	104	0	202.71
21-Jun-11	30	127	4.4	NM	0.7	112	0.1	181.83
21-Jul-11	41	137	0.0	NM	0.0	120	0.0	175.74
29-Aug-11	39	132	5.3	NM	0.0	121	0.0	176.61
26-Sep-11	46	132	1.1	NM	1.0	116	0.0	172.26
28-Oct-11	46	116	7	NM	4.6	99	0.0	186.18
18-Nov-11	46	124	3.4	NM	1.0	114	0.0	178.35
22-Dec-11	46	116	0.2	NM	0.0	118	0.0	185.31
20-Jan-12	44	114	0	80.1	0	112	0	180.96

Notes:

- Vacuum and pressure data are reported in inches of water.
- Air flow data are based on measured air velocity and are reported in cubic feet per minute.
- Temperature reported in degrees Fahrenheit.
- PID = photoionization detector reading reported in parts per million.
- NM = not measured