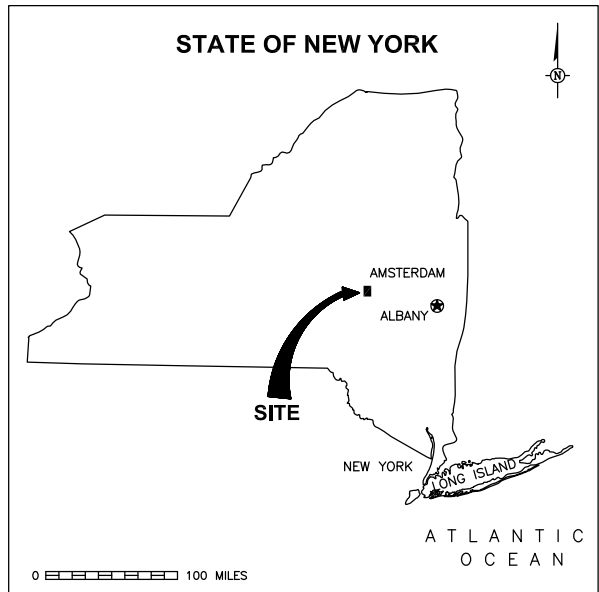
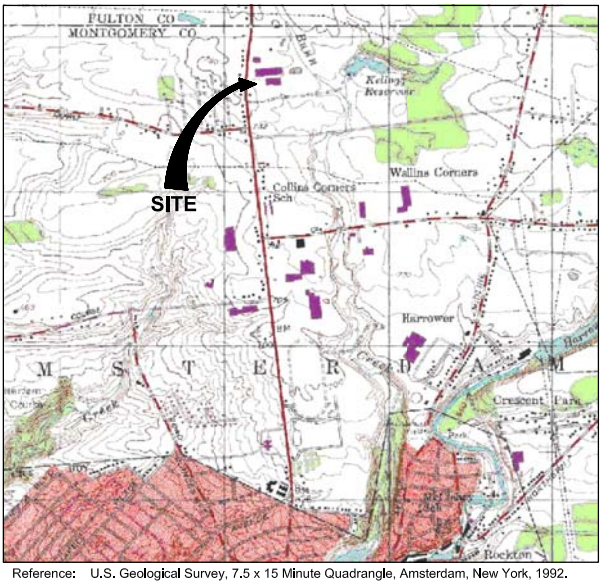


\\NY2FPI\data\PROJECT\Mohawk_Finish\Reports\Remedial_Design\100% Remedial Design Report\Appendices\B_Construction Drawings\Design MOHAWK FINISHING PRODUCTS COVER.DWG Mar. 18, 2010



SITE VICINITY MAP

LIST OF DRAWINGS	
DRAWING NO.	DRAWING TITLE
G-1	REMEDIAL SYSTEM LAYOUT
G-2	RECOVERY AND OBSERVATION WELL CONSTRUCTION DETAILS
G-3	MISCELLANEOUS CONSTRUCTION DETAILS
M-1	PROCESS AND INSTRUMENTATION DIAGRAM
M-2	EQUIPMENT LAYOUT AND HVAC DETAILS
E-1	ELECTRICAL ONE-LINE
E-2	ELECTRICAL POWER
E-3	ELECTRICAL LIGHTING
E-4	ELECTRICAL SIGNALS DRAWING
E-5	ELECTRICAL SCHEMATICS



SITE LOCATION MAP

**100% DESIGN DRAWINGS FOR
MULTIPHASE EXTRACTION AND TREATMENT SYSTEM
AT
FORMER MOHAWK FINISHING PRODUCTS
AMSTERDAM, NEW YORK**

PREPARED FOR:
RPM, Inc.
PREPARED BY:
ARCADIS OF NEW YORK, Inc.



465 NEW KARNER ROAD
ALBANY, NEW YORK 12205
PROJECT NO. AY000273.0005.0006
DATE: APRIL 2009

CITY: ALBANY DIV(GROUP: ENV DB-A. SANTINI, LD. T. CARIGNAN PIC: PH. M. SANFORD TM. LYRON-OFF-REP)
G:\NEWCAST\PROJECT\CTA1000273008\00002\DWG\FIGURE-1.1\MOHAWK FINISHING REMEDIAL ACTION.dwg LAYOUT: G-I SAVED: 3/18/2010 1:18 PM ACADVER: 10.05 (LMS TECH) PAGESETUP: — PLOTSTYLETABLE: ARCADIS.CTB PLOTTED: 3/18/2010 1:17 PM BY: GETTIS, BRIAN

GENERAL CONSTRUCTION NOTES:












1. LOCATION OF WORK: ALL WORK DESCRIBED IN THESE DRAWINGS SHALL BE PERFORMED ON BEHALF OF RPM, Inc.
2. THE CONTRACTOR SHOULD VISIT THE SITE AND EXAMINE ALL OF THE PHYSICAL CONDITIONS THAT AFFECT THE FINAL BID PRICE.
3. THE CONTRACTOR SHALL OBTAIN ALL NECESSARY FIELD MEASUREMENTS TO VERIFY THE ABILITY TO EXECUTE THE WORK IN ACCORDANCE WITH THE SCOPE OF WORK AND DRAWINGS. NO ADDITIONS OR REVISIONS TO THE BID OR CONTRACT PRICE WILL BE PERMITTED BASED ON EXISTING CONDITIONS.
4. THE CONTRACTOR SHALL PROVIDE ALL LABOR, MATERIAL, AND EQUIPMENT, UNLESS OTHERWISE STATED, NECESSARY TO PERFORM THIS WORK.
5. ALL INFORMATION PRESENTED IN THIS REQUEST REGARDING THE SITE IS CONFIDENTIAL.
6. WHILE CONSTRUCTION ACTIVITIES ARE UNDER WAY AT LEAST ONE CONTRACTOR, FOREMAN, OR CREW SUPERVISOR SHALL BE PRESENT AT ALL TIMES ON THE JOB SITE.
7. THE CONTRACTOR IS RESPONSIBLE FOR LOCATING AND VERIFYING LOCATIONS OF ALL UTILITIES WITHIN AREA AFFECTED BY CONSTRUCTION. COPIES OF THE PRINTS OBTAINED OR LOCATIONS PROVIDED TO CONTRACTOR WITH RESPECT TO UTILITIES SHALL BE SUPPLIED TO THE ENGINEER WITH A RECORD SET OF DRAWINGS AT COMPLETION OF CONSTRUCTION. IF A CONFLICT EXISTS BETWEEN THE UTILITY LOCATION AND CONSTRUCTION DRAWINGS CONTRACTOR IS TO NOTIFY THE ENGINEER IMMEDIATELY SO THAT THE CONFLICT MAY BE RESOLVED.
8. THE CONTRACTOR IS RESPONSIBLE FOR PROVING THE ENGINEER WITH ALL INFORMATION REQUIRED TO COMPLETE A SET OF RECORD DRAWINGS BY KEEPING A RECORD SET OF DAILY PROGRESSION OF WORK.
9. UNLESS OTHERWISE NOTED ALL AREAS DISTURBED BY THIS WORK SHALL BE RESTORED TO ORIGINAL CONDITION.
10. THE CONTRACTOR IS TO PROTECT AND PRESERVE ALL EXISTING FEATURES (I.E. MONITORING WELLS, EQUIPMENT, ETC.) WITHIN AREAS AFFECTED BY CONSTRUCTION. DAMAGE SUSTAINED TO AN EXISTING FEATURE WILL BE REPAIRED/REPLACED AT CONTRACTORS EXPENSE.
11. THE CONTRACTOR SHALL PERFORM ALL WORK IN ACCORDANCE WITH ALL COUNTY, LOCAL, STATE, AND/OR FEDERAL (OSHA, USEPA, DOT, ETC.) RULES AND REGULATIONS.
12. UNLESS OTHERWISE INDICATED HEREIN, ALL MATERIALS AND EQUIPMENT FURNISHED UNDER THIS CONTRACT SHALL BE NEW, FREE FROM DEFECTS, AND SHALL BE GUARANTEED FOR A PERIOD OF AT LEAST ONE YEAR FROM THE DATE OF ACCEPTANCE OF THE WORK. THE CONTRACTOR SHALL FURNISH, AT NO COST TO THE ENGINEER, ALL LABOR AND MATERIALS NECESSARY TO CORRECT PROBLEMS DUE TO FAULTY WORKMANSHIP OR MATERIALS.
13. THE INFORMATION SHOWN ON THE DRAWINGS CONCERNING TYPE AND LOCATION OF UNDERGROUND UTILITIES IS NOT GUARANTEED TO BE ACCURATE OR ALL INCLUSIVE. THE CONTRACTOR IS RESPONSIBLE FOR MAKING HIS OWN DETERMINATIONS AS TO THE TYPE AND LOCATION OF UNDERGROUND UTILITIES AS MAY BE NECESSARY TO AVOID DAMAGE THERETO.
14. PIPE ROUTING AND AND UTILITIES (I.E. POWER DROP AND POTABLE WATER) SHOWN FOR CONSTRUCTION LAYOUT/BIDDING PURPOSES ONLY, ACTUAL TO BE FIELD DETERMINED AND IS SUBJECT TO ENGINEERS APPROVAL.
15. CONTRACTOR SHALL EXTEND ALL PROCESS PIPING AND MAKE ALL NECESSARY CONNECTION TO WELL HEADS.
16. ALL CONCRETE CUTS ARE TO SMOOTH EDGED SAW CUTS BY CIRCULAR SAW BLADES.

SURVEY NOTES:

1. SURVEY PERFORMED BY AZIMUTH SURVEYING & CARTOGRAPHY, JAMES J. WHITE, L.S. NO. 50,026. BOX 186 BURNT HILLS, NY 12027. SURVEY COMPLETED SEPTEMBER 5, 2000.
2. THIS FIGURE IS INTENDED TO SHOW EXISTING WELLS IN RELATION TO OTHER SITE FEATURES ON THE SITE. OTHER IMPROVEMENTS EXIST AND ARE NOT SHOWN. THIS MAP DOES NOT REPRESENT EITHER A BOUNDARY SURVEY NOR A TOPOGRAPHIC SURVEY.
3. ELEVATION DATUM IS ASSUMED AS 100.00 ON MANHOLE RIM AS SHOWN. NAVD88 ELEVATION FOR THE SAME POINT IS 737.56. NAVD88 DATUM ESTABLISHED BY STATIC GPS OBSERVATIONS FROM "AMSTERDAM 2" (PID NAO078).

GENERAL LOCATION OF FACILITY ELECTRIC
POWER DISTRIBUTION SWITCH GEAR

LEGEND

- | | | |
|---|---|---|
| MW-1 |  | LOCATION AND DESIGNATION OF MONITORING WELL |
| GM-1 |  | LOCATION AND DESIGNATION OF 2" STAINLESS STEEL MONITORING WELL |
| GM-A |  | LOCATION AND DESIGNATION OF 4" STAINLESS STEEL MONITORING WELL |
| WELL-1 |  | LOCATION AND DESIGNATION OF SUPPLY WELL |
| OB-1 |  | LOCATION AND DESIGNATION OF 2" STAINLESS STEEL OBSERVATION WELL |
| OB-4 |  | PROPOSED LOCATION AND DESIGNATION OF 2" STAINLESS STEEL OBSERVATION WELL |
| VER-1 |  | LOCATION AND DESIGNATION OF 4" STAINLESS STEEL VACUUM ENHANCED RECOVERY WELL |
| RW-1 |  | PROPOSED LOCATION AND DESIGNATION OF 4" STAINLESS STEEL VACUUM ENHANCED RECOVERY WELL |
|  | | PROPOSED LOCATION AND DESIGNATION OF VER PROCESS PIPING |
|  | | PROPOSED LOCATION AND DESIGNATION OF SYSTEM DISCHARGE PIPING |
|  BUILDING COLUMN | | |

SECTION OR DETAIL IDENTIFICATION SYMBOL

DIRECTIONAL FOR SECTIONS\

SECTION LETTER OR DETAIL NUMBER (-INDICATES DRAWING ONLY)

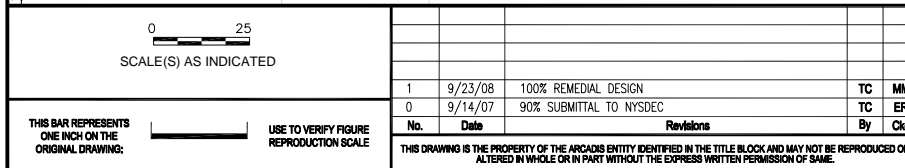
DRAWING ON WHICH SECTION OR DETAIL IS SHOWN

DRAWING ON WHICH SECTION OR DETAIL IS SHOWN

GENERAL LOCATION OF
POTABLE WATER SOURCE

BUILDING 7

NEW ADDITION



Professional Engineer's Name		
MOH MOHIUDDIN PhD, PE, DEE		
Professional Engineer's No.		
074527		
State	Date Signed	Project Mgr.
NY		M. SANFORD
Designed by	Drawn by	Checked by
T. CARGNAN	A. SANTINI	T. CARGNAN



ARCADIS OF NEW YORK, INC.

FORMER MOHAWK FINISHING PRODUCTS • AMSTERDAM, NEW YORK

REMEDIAL SYSTEM LAYOUT

ARCADIS Project No.
AY000273.0005.00006

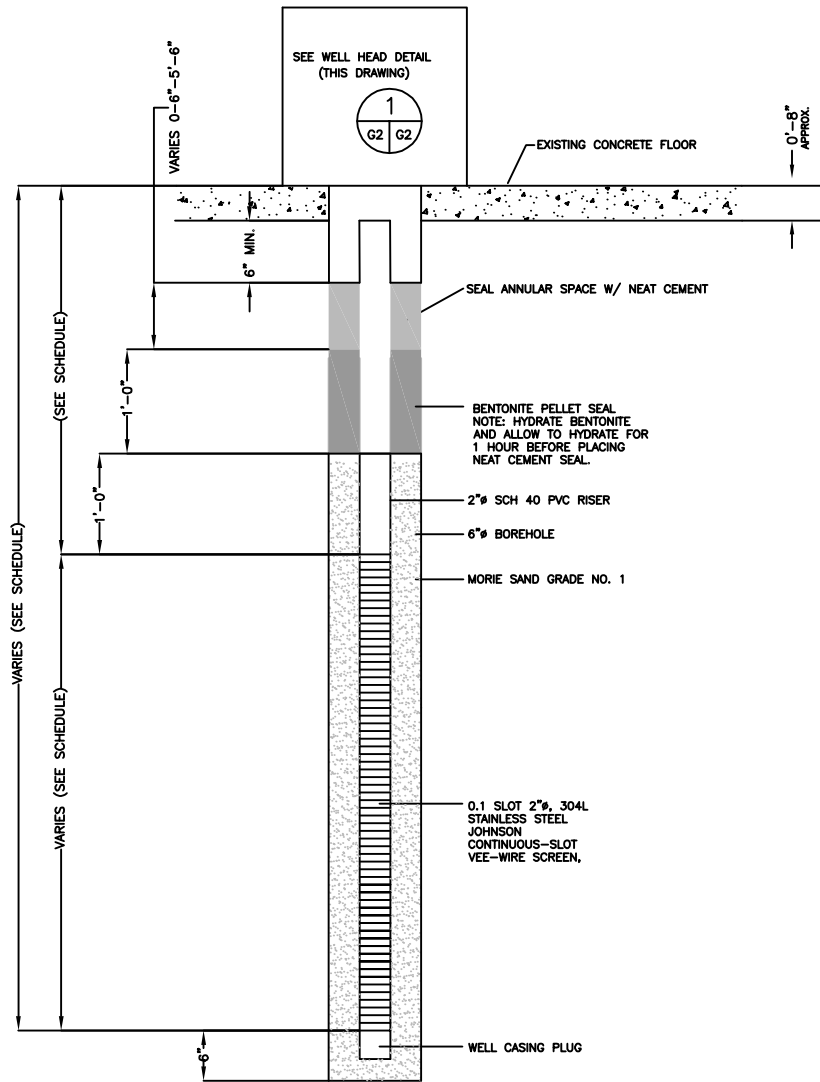
Date
MARCH 2009

ARCADIS OF NEW YORK, INC.
485 NEW KARNER ROAD
ALBANY, NEW YORK 12205
TEL. 518-452-7826

G-1

CITY: ALBANY DIV: GROUP: ENV DB: A. SANTINI LD: T. CARIGNAN P/C: P&M M. SANFORD T/L: LYRON-OFF-REF: G:\ENVCAD\SYRACUSE\ACT\1\000273\00000002\DWG\RECORD-G-2 MOHAWK FINISHING WELL CONSTRUCTION DETAILS.dwg LAYOUT: G-2 SAVED: 4/8/2009 12:54 PM ACADVER: 16.05 [LMS TECH] PAGESETUP: — PLOTSTYLETABLE: ARCADIS.CTB PLOTTED: 3/17/2010 2:12 PM BY: GETTS, BRIAN PROJECT NAME: MOHAWK FINISHING

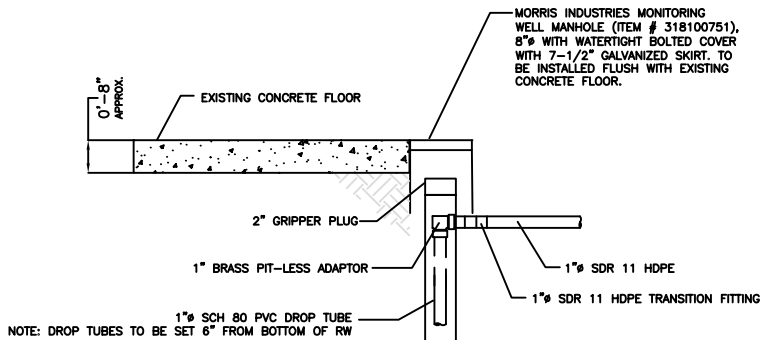
REFS:



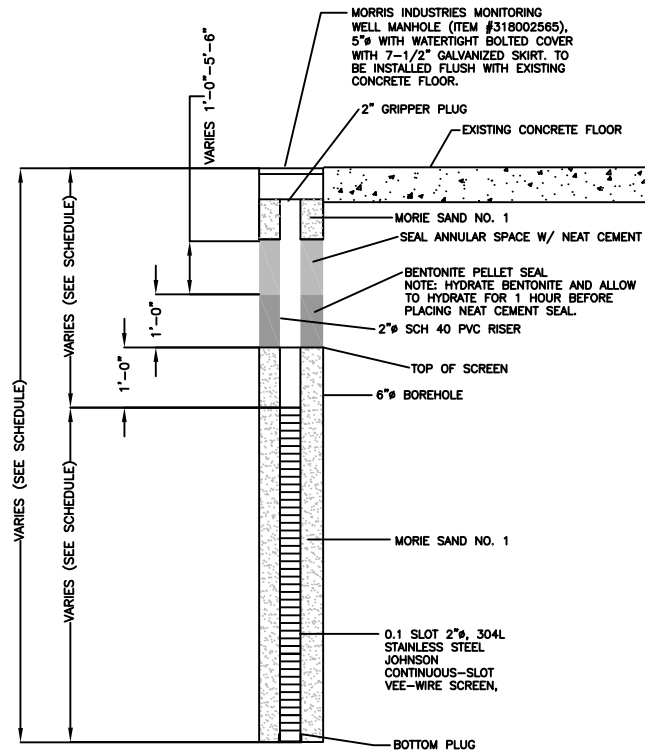
1
G1 G2
TYPICAL RECOVERY WELL CONSTRUCTION DETAIL
NOT TO SCALE

WELL ID	TOTAL DEPTH	SCREEN INTERVAL
RW1	14	9'-14'
RW2	14	9'-14'
RW3	14	9'-14'
RW4	10	5'-10'
RW5	10	5'-10'
RW6	10	5'-10'
RW7	10	5'-10'
RW8	14	4'-14'
RW9	14	4'-14'
RW10	14	4'-14'
RW11	14	4'-14'
RW12	14	4'-14'
RW13	14	4'-14'
RW14	14	4'-14'
RW15	14	4'-14'
RW16	14	4'-14'
RW17	14	4'-14'
RW18	10	5'-10'
RW19	14	4'-14'
RW20	10	5'-10'
RW21	10	5'-10'
RW22	14	4'-14'
RW23	14	4'-14'
RW24	10	5'-10'
RW25	14	4'-14'
RW26	14	4'-14'
RW27	14	4'-14'
RW28	14	4'-14'
RW29	10	5'-10'
RW30	14	4'-14'
RW31	14	4'-14'
RW32	14	4'-14'

RECOVERY WELL CONSTRUCTION SCHEDULE
NOT TO SCALE



1
G2 G2
TYPICAL RW WELLHEAD DETAIL
NOT TO SCALE



TYPICAL OBSERVATION WELL DETAIL
NOT TO SCALE

WELL CONSTRUCTION NOTES:

1. CONTRACTOR SHALL COMPLY WITH ALL APPLICABLE OSHA AND STATE EXCAVATION SAFETY REGULATIONS RELATED TO HIS WORK.
2. CONTRACTOR SHALL LOCATE ALL UTILITIES PRIOR TO BEGINNING OF WORK. IT IS THE CONTRACTOR'S RESPONSIBILITY TO MAINTAIN EXISTING UTILITY SERVICES AND PROTECT ALL UTILITIES DURING CONSTRUCTION. DAMAGE TO UTILITIES WILL BE REPAIRED TO THE SATISFACTION OF THE UTILITY OWNER AND CONSULTANT AT THE CONTRACTOR'S EXPENSE.
3. ALL CONCRETE CUTS AND OR BOREHOLES ARE TO BE SMOOTH EDGE SAW CUTS BY CIRCULAR SAW BLADES OR CORING MACHINES.
4. NO EXCAVATION OR BOREHOLE SHALL BE LEFT OPEN OVERNIGHT, UNLESS PROPER PROTECTION IS PROVIDED AND APPROVAL IS GIVEN BY THE ENGINEER.
5. EXCESS EXCAVATION OR DRILL CUTTING MATERIAL SHALL BE STORED ON-SITE AT A LOCATION DIRECTED BY THE ENGINEER.
6. CONTRACTOR SHALL RESTORE ALL DISTURBED FLOORING MATERIALS (INCLUDING CONCRETE PAVEMENT AND BLOCKS), AND ANY OTHER DISTURBED GROUND SURFACE FEATURES TO THEIR ORIGINAL CONDITIONS, AND IN ACCORDANCE WITH THE SPECIFICATIONS.

WELL ID	TOTAL DEPTH	SCREEN INTERVAL
OB-4	14	9'-14'
OB-5	10	5'-10'
OB-6	10	5'-10'
OB-7	10	5'-10'
OB-8	14	4'-14'
OB-9	14	4'-14'
OB-10	14	4'-14'
OB-11	14	4'-14'
OB-12	14	4'-14'
OB-13	10	5'-10'

OBSERVATION WELL CONSTRUCTION SCHEDULE
NOT TO SCALE

SCALE(S) AS INDICATED

THIS BAR REPRESENTS ONE INCH ON THE ORIGINAL DRAWING:  USE TO VERIFY FIGURE REPRODUCTION SCALE

1	9/23/08	100% REMEDIAL DESIGN	TC	MM
0	9/14/07	90% SUBMITTAL TO NYSDEC	TC	MS
No.	Date	Revisions	By	Chd

THIS DRAWING IS THE PROPERTY OF THE ARCADIS ENTITY IDENTIFIED IN THE TITLE BLOCK AND MAY NOT BE REPRODUCED OR ALTERED IN WHOLE OR IN PART WITHOUT THE EXPRESS WRITTEN PERMISSION OF SAME.

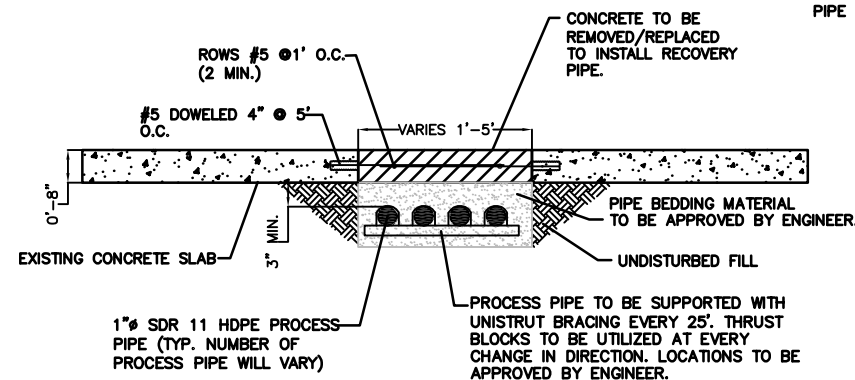
Professional Engineer's Name
MOH MOHIUDDIN PhD, PE, DEE
Professional Engineer's No.
074527
State
NY
Date Signed
Project Mgr.
M. SANFORD
Designed by
T. CARIGNAN
Drawn by
A. SANTINI
Checked by
T. CARIGNAN


ARCADIS OF NEW YORK, INC.

FORMER MOHAWK FINISHING PRODUCTS • AMSTERDAM, NEW YORK
**RECOVERY AND OBSERVATION WELL
CONSTRUCTION DETAILS**

ARCADIS Project No.
AY000273.0005.00006
Date
MARCH 2009
ARCADIS OF NEW YORK, INC.
485 NEW KARNER ROAD
ALBANY, NEW YORK 12205
TEL. 518-452-7826

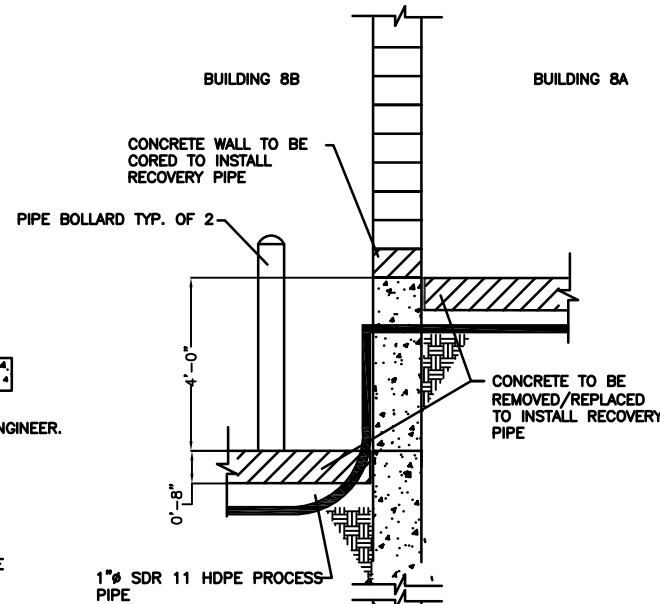
G-2



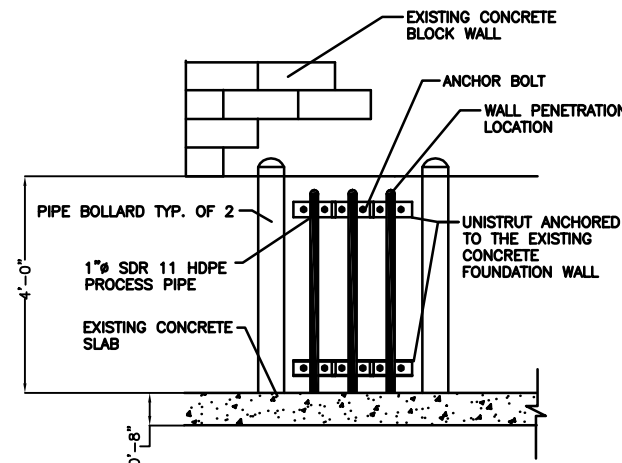
8
G1 G3

TYPICAL RECOVERY PIPING
TRENCH DETAIL

NOT TO SCALE



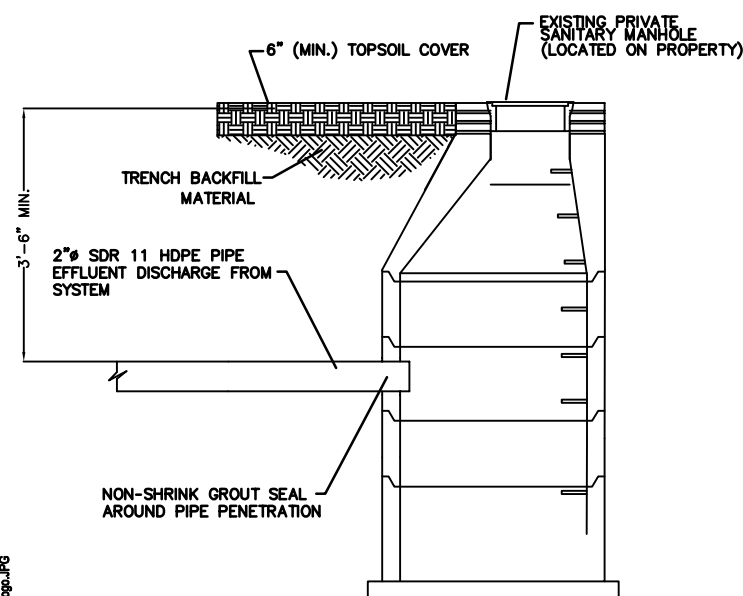
3 BUILDING 8A/8B RECOVERY
PIPE ELEVATION DETAIL
G1G3 NOT TO SCALE



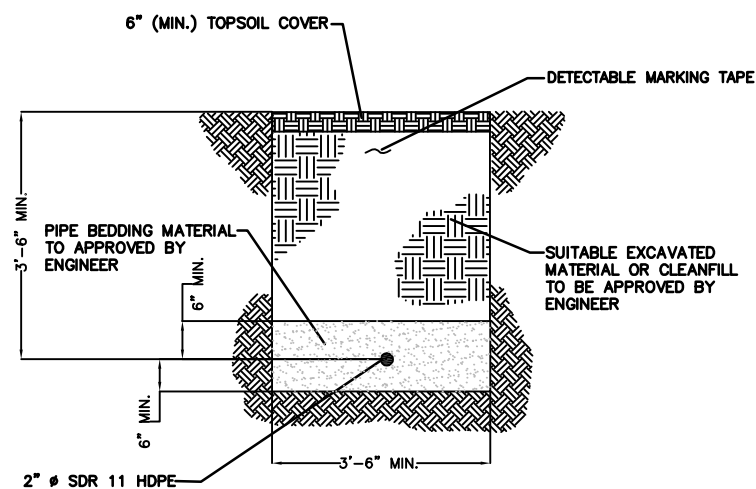
BUILDING 8A/8B ABOVE
GRADE VERTICAL RECOVERY
PIPE SUPPORT DETAIL

2
G1G3

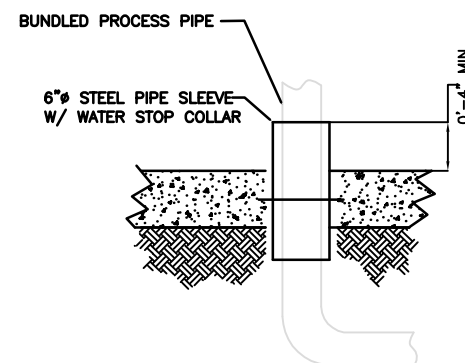
NOT TO SCALE



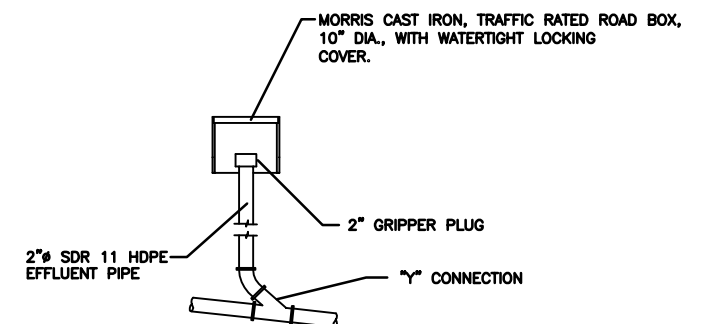
5 SANITARY SEWER TIE-IN/DROP-IN DETAIL
G1/G3 NOT TO SCALE



4 EXTERIOR EFFLUENT DISCHARGE PIPE TRENCH DETAIL
G1 G3
NOT TO SCALE



7 TYPICAL PROCESS PIPE FLOOR PENETRATION
G1 G3 NOT TO SCALE



6 TYPICAL EFFLUENT CLEANOUT DETAIL
G1/G3
NOT TO SCALE

NOTE: CLEANOUTS SHALL BE INSTALLED AT A MINIMUM ONE PER 100 LINEAR FEET AND ONE EVERY CHANGE IN HORIZONTAL DIRECTION. LOCATIONS TO BE APPROVED BY ENGINEER.

CONSTRUCTION NOTES:

1. ALL PIPING PRESSURE TESTS SHALL BE MADE BY THE CONTRACTOR IN THE PRESENCE OF THE ENGINEER. TESTS SHALL BE PERFORMED PRIOR TO BACKFILL OF TRENCHES.
2. THE CONTRACTOR SHALL PROVIDE ALL PRODUCTS AND PROPERLY CALIBRATED TESTING EQUIPMENT REQUIRED TO PERFORM THE PRESSURE TESTING WORK.
3. ALL RECOVERY PIPING SHALL BE PRESSURE TESTED. PIPING JOINTS SHALL BE EXPOSED DURING THE TESTS. UNLESS APPROVED BY ENGINEER, SHALL NOT PERFORM PRESSURE TESTING AGAINST SYSTEM VALVES. PIPE SECTIONS SHALL BE HYDROSTATICALLY TESTED AT 125 PSI FOR TWO HOURS.
4. AFTER THE INITIAL PRESSURE TEST ON PIPING IS COMPLETED SUCCESSFULLY, THE CONTRACTOR SHALL BACKFILL THE TRENCHES AS SPECIFIED ON HEREIN.
5. TRENCHING WILL BE PERFORMED PER THESE SPECIFICATIONS AND AS SHOWN ON HEREIN.
6. EXCAVATIONS SHALL BE KEPT FREE FROM STANDING WATER.
7. CONTRACTOR SHALL NOTIFY THE ENGINEER AT THE COMPLETION OF EXCAVATIONS AND TRENCHING TO ALLOW FOR INSPECTIONS.
8. CONTRACTOR SHALL PROVIDE APPROPRIATE SAFETY BARRICADES AROUND TRENCHING AND EXCAVATION TO PREVENT ACCIDENTS OR UNAUTHORIZED ENTRY.
9. BACKFILL OF TRENCHES IN UNPAVED AREAS WILL BE APPLIED IN 1-FOOT COMPACTED LIFTS SUCH THAT A MINIMUM 85% PROCTOR DENSITY IS ACHIEVED.
10. CONTRACTOR'S FILL SOURCE MUST BE TESTED BY CONTRACTOR AND APPROVED BY THE ENGINEER PRIOR TO COMMENCING THE WORK AND/OR PLACING THE MATERIAL.
11. EXCAVATIONS WILL BE BACK FILLED AS PROMPTLY AS WORK PERMITS ONCE REQUIRED INSPECTIONS HAVE BEEN COMPLETED.
12. DO NOT PLACE MATERIALS ON SURFACES THAT ARE MUDDY, FROZEN, OR CONTAIN ICE OR FROST.
13. CONTRACTOR SHALL PLACE A SINGLE STRIP OF UTILITY WARNING TAPE IN ALL NON-PAVED TRENCHED AREAS. THIS TAPE SHALL CONTAIN A WIRE FOR METAL DETECTION OR HAVE AN ALUMINUM CORE.
14. ALL CONCRETE AND PAVEMENT CUTS ARE TO BE SMOOTH EDGE SAW CUTS BY CIRCULAR SAW BLADES.
15. ALL RECOVERY PIPELINES SHALL BE FLUSHED WITH POTABLE WATER FOLLOWING FINAL PRESSURE TEST APPROVAL AND PRIOR TO FINAL CONNECTION.

ADDITIONAL NOTES:

1. CONTRACTOR SHALL COMPLY WITH ALL APPLICABLE OSHA AND STATE EXCAVATION SAFETY REGULATIONS RELATED TO HIS WORK.
2. CONTRACTOR SHALL LOCATE ALL UTILITIES PRIOR TO BEGINNING OF WORK. IT IS THE CONTRACTOR'S RESPONSIBILITY TO DETERMINE EXISTING UTILITY SERVICES AND PROTECT ALL UTILITIES DURING CONSTRUCTION. DAMAGE TO UTILITIES WILL BE REPAIRED TO THE SATISFACTION OF THE UTILITY OWNER AND CONSULTANT AT THE CONTRACTOR'S EXPENSE.
3. ALL EXISTING DIMENSIONS AND ELEVATIONS RELEVANT TO THE WORK SHALL BE VERIFIED IN THE FIELD BY THE CONTRACTOR.
4. NO EXCAVATION OR BOREHOLE SHALL BE LEFT OPEN OVERNIGHT, UNLESS PROPER PROTECTION IS PROVIDED AND APPROVAL IS GIVEN BY THE ENGINEER.
5. EXCAVATION MATERIAL SHALL BE STORED ON-SITE AT A LOCATION DIRECTED BY THE ENGINEER.
6. CONTRACTOR SHALL RESTORE ALL DISTURBED FLOORING MATERIALS (INCLUDING CONCRETE AND BLOCKS), AND ANY OTHER DISTURBED GROUND SURFACE FEATURES TO THEIR ORIGINAL CONDITIONS, AND IN ACCORDANCE WITH THE SPECIFICATIONS.
7. ALL CAST IN PLACE CONCRETE TO HAVE A MINIMUM OF 4000 PSI F.C. COMPRESSIVE STRENGTH @ 28 DAYS.
8. ALL CAST IN PLACE CONCRETE TO HAVE FIBERMESH 650 FIBER REINFORCEMENT AS MANUFACTURED BY PROPEX.
9. ALL CAST IN PLACE CONCRETE TO BE STEEL TROWELED FINISHED

[illegible]

ARCADIS OF NEW YORK, INC.

FORMER MOHAWK FINISHING PRODUCTS • AMSTERDAM, NEW YORK

MISCELLANEOUS CONSTRUCTION DETAILS

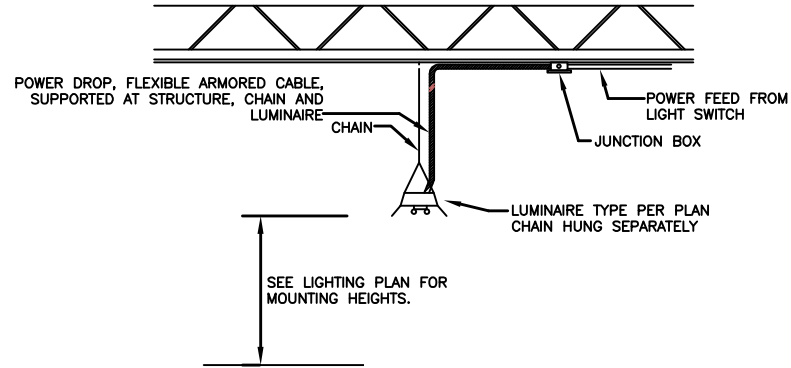
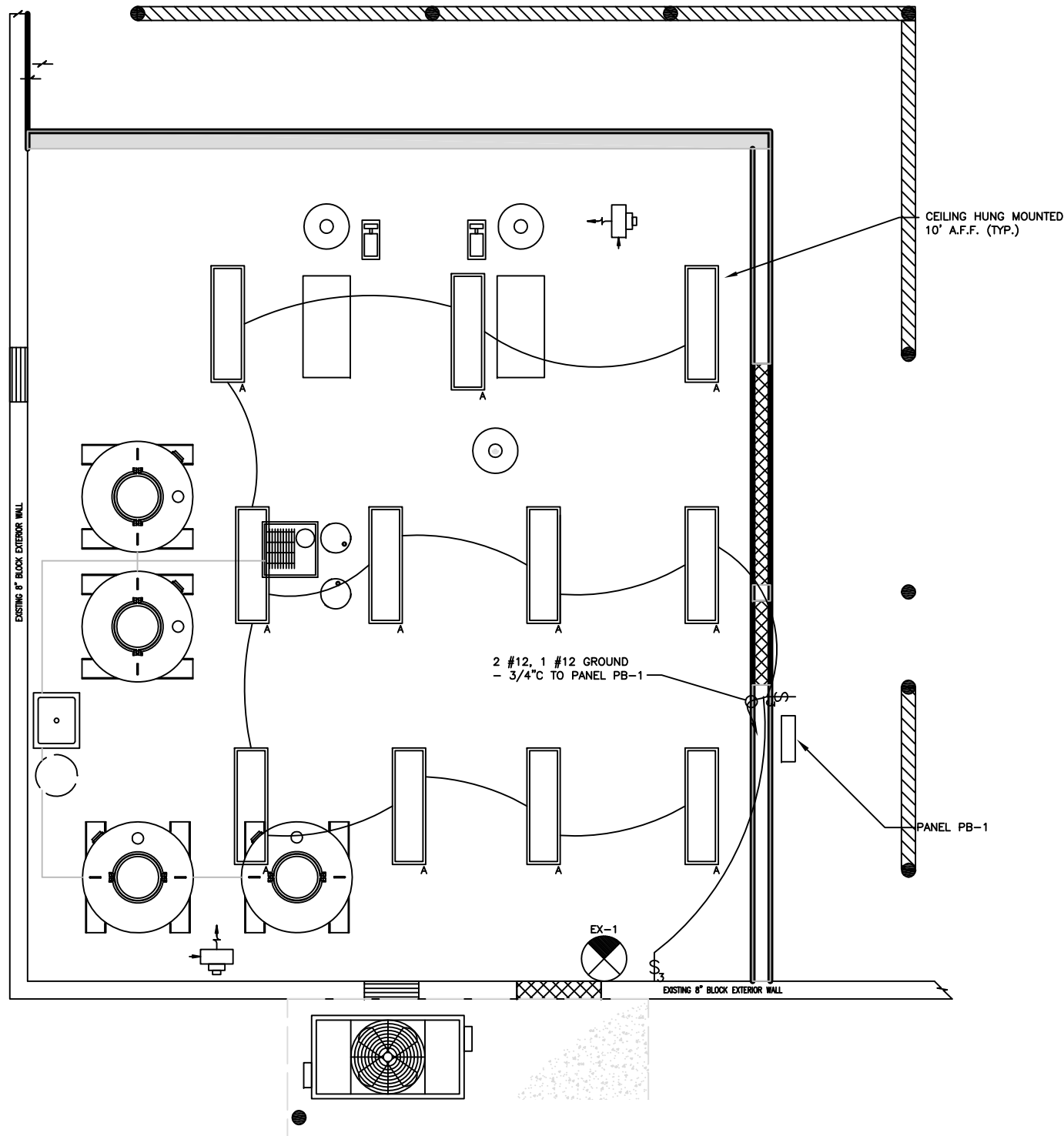
<p>ARCADIS Project No. AY000273.0005.00006</p>
<p>Date MARCH 2009</p>
<p>ARCADIS OF NEW YORK, INC. 465 NEW KARNER ROAD ALBANY, NEW YORK 12205 TEL. 518-462-7826</p>

G-3

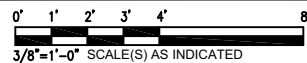


ARCADIS Project No. AY000273.0005.00006	M-2
Date MARCH 2009	
ARCADIS OF NEW YORK, INC. 465 NEW KARNER ROAD ALBANY, NEW YORK 12205 TEL. 518-452-7826	

CITY: ALBANY DIV/GROUP: ENV DB: A. SANTINI LD: T. CARIGNAN PIC: P.M. SANFORD T.M: LYRON-F. OFF-REF: G:\ENVCAD\SYRACUSE\ACT\1\00273000\002\DWG\RECORD\E-3 LIGHTING.dwg LAYOUT: E-3
XREFS: 1=2, MOHAWK Finishing Equipment Layout_V4
IMAGES/ECTNAME: MOHAWK FINISHING
PAGESETUP: — PLOTSTYLETABLE: ARCADIS.CTB PLOTTED: 3/17/2010 2:08 PM BY: GETTS, BRIAN
ACADVER: 18.05 (LMS TECH) PAGES: 18
SAVED: 3/17/2010 10:57 AM



LUMINAIRE SCHEDULE						
TYPE	LAMPS/FIXTURE		CATALOG NUMBER	MOUNTING		DESCRIPTION
	NO.	TYPE		HEIGHT (AFF) (FEET)	TYPE	
A	2	F32T8	DAY-BRITE # 1F232-PP-120-1/2-EB	10 Ft.	CHAIN HUNG	4' INDUSTRIAL WITH PAINTED POLYESTER REFLECTOR (WITH 10% UPLIGHT), STEEL HOUSING 120V ELECTRONIC BALLAST AND CHAIN HANGERS
EX-1		LIGHT EMITTING DIODE (LED)	LITHONIA LQMSW3R-120/270-EL-N-SD	8-10 Ft.	WALL	EXIT SIGN (LED)



THIS BAR REPRESENTS ONE INCH ON THE ORIGINAL DRAWING: USE TO VERIFY FIGURE REPRODUCTION SCALE

1	3/20/09	100% REMEDIAL DESIGN	TC	MM
0	3/10/09	DRAFT	EK	TC
No.	Date	Revisions	By	Chd

THIS DRAWING IS THE PROPERTY OF THE ARCADIS ENTITY IDENTIFIED IN THE TITLE BLOCK AND MAY NOT BE REPRODUCED OR ALTERED IN WHOLE OR IN PART WITHOUT THE EXPRESS WRITTEN PERMISSION OF SAME.

Professional Engineer's Name MOH MOHIUDDIN PhD, PE, DEE		
Professional Engineer's No. 074527		
State NY	Date Signed	Project Mgr. M. SANFORD
Designed by EK/TC	Drawn by E. KNERR	Checked by T. CARIGNAN



ARCADIS OF NEW YORK, INC.

FORMER MOHAWK FINISHING PRODUCTS • AMSTERDAM, NEW YORK

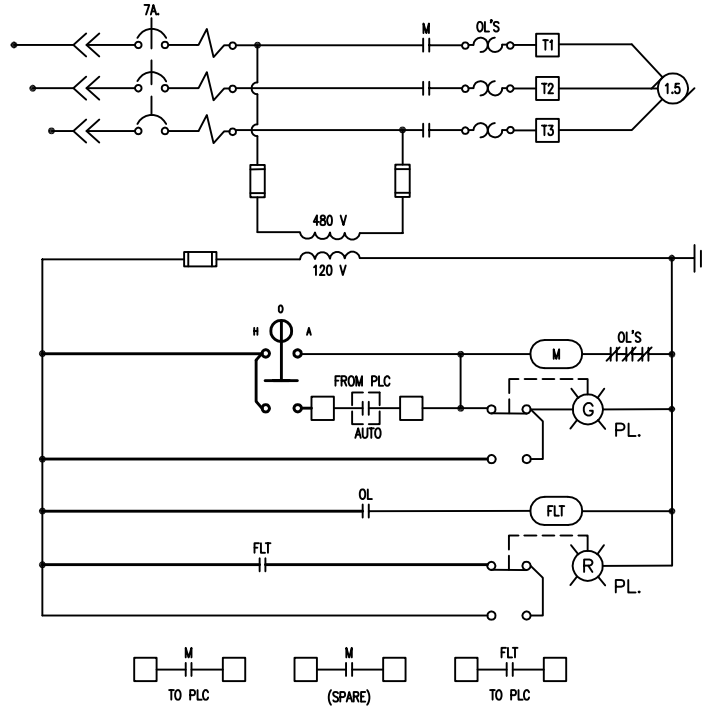
ELECTRICAL LIGHTING

ARCADIS Project No.
AY000273.0005.00006

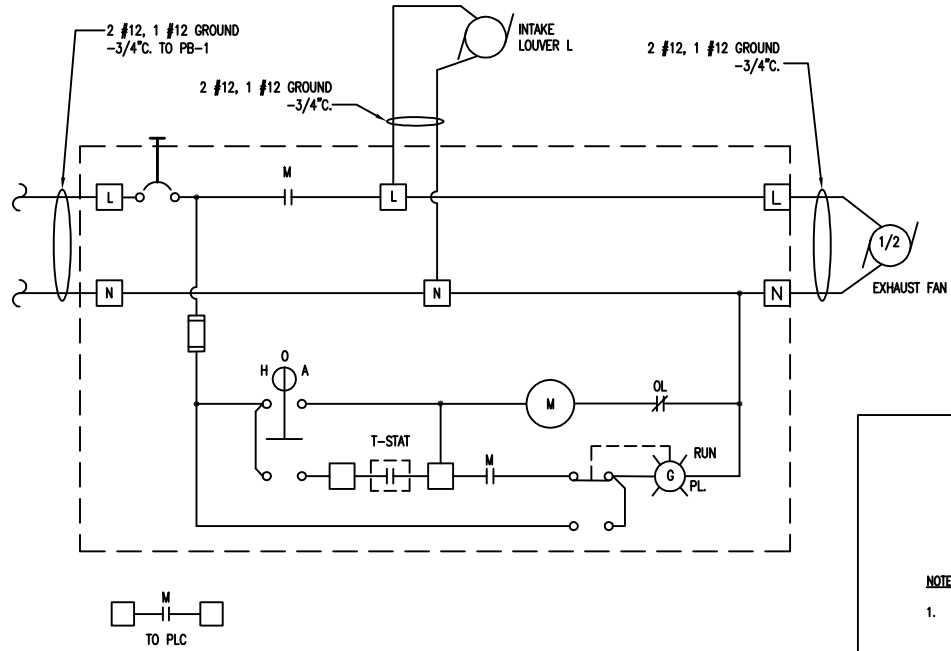
Date
MARCH 2009

ARCADIS OF NEW YORK, INC.
485 NEW KARNER ROAD
ALBANY, NEW YORK 12205
TEL. 518-452-7826

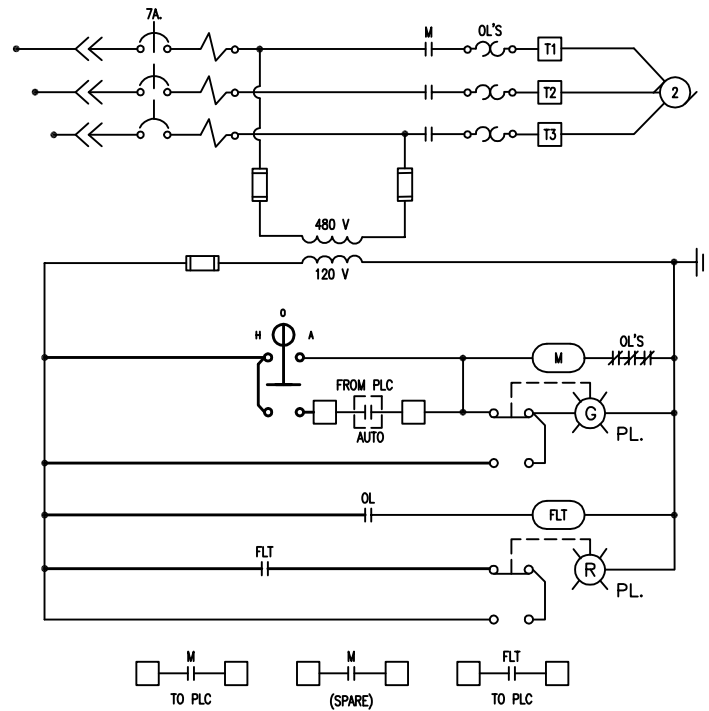
E-3



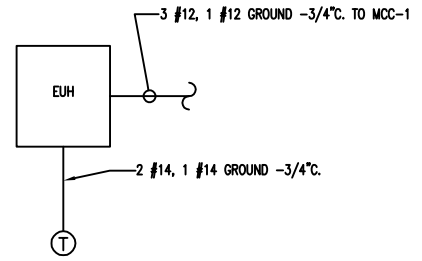
SCHEMATIC TRANSFER PUMP
(TYPICAL TP-200, TP-300, & TP-900)



EXHAUST FAN

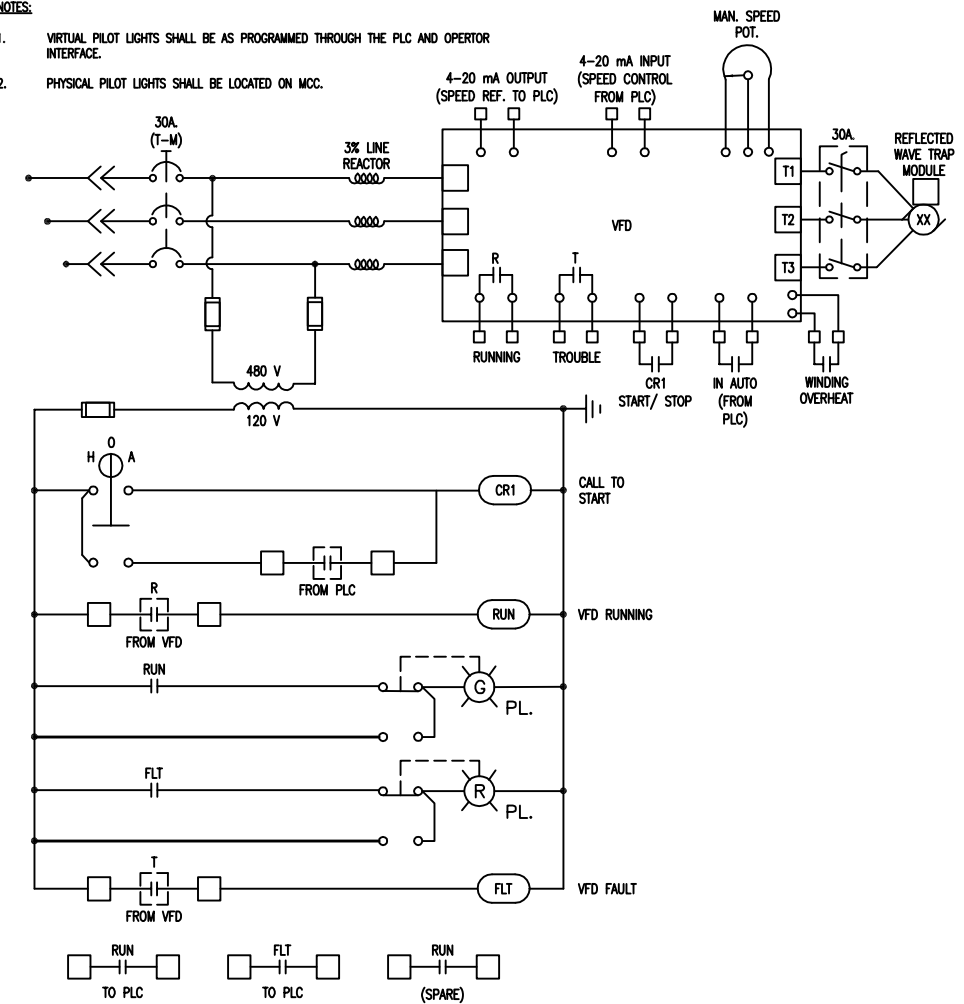


HEAT EXCHANGER SCHEMATIC
(HX-700)




ELECTRIC UNIT HEATER RISER DIAGRAM
(TYP)

- NOTES:**
1. VIRTUAL PILOT LIGHTS SHALL BE AS PROGRAMMED THROUGH THE PLC AND OPERATOR INTERFACE.
 2. PHYSICAL PILOT LIGHTS SHALL BE LOCATED ON MCC. 4-20 m (OPEN) m



SCHEMATIC HEAT EXCHANGER (2 HP)
SCHEMATIC ROTARY CLAW PUMPS (8.7 HP)
(TYPICAL RCP-200 AND RCP-300)

SCALE(S) AS INDICATED							
		1	3/20/09	100% REMEDIAL DESIGN		TC	MM
THIS BAR REPRESENTS  ONE INCH ON THE ORIGINAL DRAWING:		0	3/10/09	DRAFT		EK	TC
		No.	Date	Revisions	By	By	Clid
		THIS DRAWING IS THE PROPERTY OF THE ARCADIS ENTITY IDENTIFIED IN THE TITLE BLOCK AND MAY NOT BE REPRODUCED OR ALTERED IN WHOLE OR IN PART WITHOUT THE EXPRESS WRITTEN PERMISSION OF SAME.					

Professional Engineer's Name		
MOH MOHIUDDIN PhD, PE, DEE		
Professional Engineer's No.		
074527		
State	Date Signed	Project Mgr.
NY		M. SANFORD
Designed by	Drawn by	Checked by
EK/TC	E. KNERR	T. CARIGNAN



ARCADIS OF NEW YORK, INC.

FORMER MOHAWK FINISHING PRODUCTS • AMSTERDAM, NEW YORK

ELECTRICAL SCHEMATICS

<p>ARCADIS Project No. AY000273.0005.00006</p>
<p>Date MARCH 2009</p>
<p>ARCADIS OF NEW YORK, INC. 485 NEW KARNER ROAD ALBANY, NEW YORK 12205 TEL. 518-452-7826</p>