



FACT SHEET

Voluntary Cleanup Program

**LIRR Bayside Substation
V00386
Bayside, NY 11361**

August 2011

Remedy Proposed for Voluntary Cleanup Program Site Contamination; Public Comment Period Announced

The public is invited to comment on a proposed remedy being reviewed by the New York State Department of Environmental Conservation (NYSDEC) and the New York State Department of Health (NYSDOH) to address contamination related to Long Island Railroad (LIRR) Bayside Substation ("Site") located at the intersection of 216th St. and 41st Ave. in Bayside, Queens. See map for site location.

The Proposed Remedy:

The remedy proposed for the Site includes removal and off-site disposal of 210 cubic yards of on-site soils that are contaminated by mercury in excess of soil cleanup objectives, and replacement with clean fill. The Long Island Railroad ("Volunteer") developed the proposed remedy after performing a detailed investigation of the Site under New York's Voluntary Cleanup Program (VCP).

The proposed remedy is described in a draft cleanup plan called a "Remedial Action Work Plan". The document is available for review at the location identified below under "Where to Find Information".

How to Comment:

NYSDEC is accepting written public comments about the proposed remedy for 30 days, from August 19, 2011 through September 19, 2011.

Submit written comments to:

Robert Filkins
New York State Dept of Environmental Conservation
DER, Bureau B, 12th Floor
625 Broadway, Albany, NY 12233
Email: rhfilkin@gw.dec.state.ny.us

Voluntary Cleanup Program: New York's Voluntary Cleanup Program (VCP) was developed to encourage private sector volunteers to investigate and clean up contaminated properties and return these sites to productive use. Once cleaned up, the properties may be redeveloped for commercial, industrial, residential or public use.

For more information about the VCP, visit:
www.dec.ny.gov/chemical/8442.html

Summary of the Proposed Remedy:

The draft cleanup plan that identifies the proposed remedy has several goals:

- 1) Identify cleanup levels to be attained or the process to be used to determine these levels;
- 2) Explain why the proposed remedy will protect public health and the environment; and
- 3) Provide a detailed description of the proposed remedy.

Under NYSDEC regulations the restricted use soil cleanup objectives (SCO) for mercury contamination at a restricted access industrial site such as this one is 5.7 parts per million (ppm). For the portions of the LIRR property that are not fenced, the residential SCO of 0.81 ppm will be used. At this Site, 134 surface and sub-surface soil samples were taken. Thirteen surface soil samples and no subsurface soil samples exceeded the industrial (SCO) for mercury. Five surface soil and 10 subsurface soil samples exceed the industrial SCO for arsenic of 16 ppm. The simplest and most protective remedy is to excavate and remove the contaminated soil for disposal at an appropriate off-site landfill. The remedy calls for excavation of approximately 210 cubic yards of soil, followed by end point sampling to ensure all contamination above cleanup objectives has been removed. The excavation will then be back filled with clean fill.

Next Steps:

NYSDEC will consider public comments, revise the plan as necessary, and approve the proposed remedy. The NYSDOH must concur with the proposed remedy. After approval, the proposed remedy becomes the selected remedy. The draft Remedial Action Work Plan that describes the proposed remedy is revised as needed to describe the selected remedy, and will be made available to the public (see “Where to Find Information” below). The Volunteer may then design and perform the cleanup action to address the site contamination, with oversight by NYSDEC. It is estimated that activities to clean up the Site will take about one week.

NYSDEC will keep the public informed during the cleanup of the Site.

Background:

NYSDEC previously accepted an application from the Volunteer to participate in the VCP. The application proposes that the Site will be used for industrial purposes.

The Site is located in an urban area bordered by the LIRR tracks to the south, residential properties to the north and east, and a light industrial property to the west. The Site is an approximately 0.25 acre area and includes an 1800 square foot, one story brick building and a 3600 square foot transformer yard. Previously, some of the electrical equipment contained mercury, until it was replaced in the 1980s. In 1999, the Volunteer began investigating this and other similar substations to determine whether releases of mercury to the environment had occurred. Their findings led them to sign an agreement to enter apply for NYSDEC’s VCP in 2004 to complete the investigation with NYSDEC and NYSDOH oversight. The investigation was completed in 2009, and the Volunteer and NYSDEC are now proposing the remedy described above to remediate the contamination found.

FOR MORE INFORMATION

Where to Find Information:

Project documents are available at the following location to help the public stay informed. These documents include the draft cleanup plan (Draft Remedial Action Work Plan).

Queens Borough Public Library –
Bayside Branch
214-20 Northern Blvd.
Bayside, NY 11361
Hours: Mon 10pm - 8pm, Tues 1pm - 6pm,
Wed 10am - 6pm, Thur 1 pm - 8 pm,
Fri 10am - 6pm, Saturday 10am – 5:30pm
Closed Sunday
Phone: (718) 229-1834

Who to Contact:

Comments and questions are always welcome and should be directed as follows:

Project-related Questions

Mr. Robert H. Filkins
Project Manager, NYSDEC
625 Broadway, 12th Floor
Albany, NY 12233-7016
M-F 8:00 AM - 4:30 PM
Phone: (518) 402-9768
Email: rhfilkin@gw.dec.state.ny.us

Site-related Health Questions

Mr. Christopher Doroski
NYSDOH
Flanigan Square, 547 River Street
Troy, NY 12180-2216
Phone: 1-800-458-1158
ext. 27860
Email: BEEI@health.state.ny.us

If you know someone who would like to be added to the site contact list, have them contact the NYSDEC project manager listed above. We encourage you to share this Fact Sheet with neighbors and tenants, and/or post this Fact Sheet in a prominent area of your building for others to see.

Receive Site Fact Sheets by Email

Have site information such as this Fact Sheet sent right to your email inbox. NYSDEC invites you to sign up with one or more contaminated sites county email listservs available at the following web page: www.dec.ny.gov/chemical/61092.html . It's *quick*, it's *free*, and it will help keep you *better informed*.



As a listserv member, you will periodically receive site-related information/announcements for all contaminated sites in the county(ies) you select.

You may continue also to receive paper copies of site information for a time after you sign up with a county listserv, until the transition to electronic distribution is complete.

Note: Please disregard if you already have signed up and received this Fact Sheet

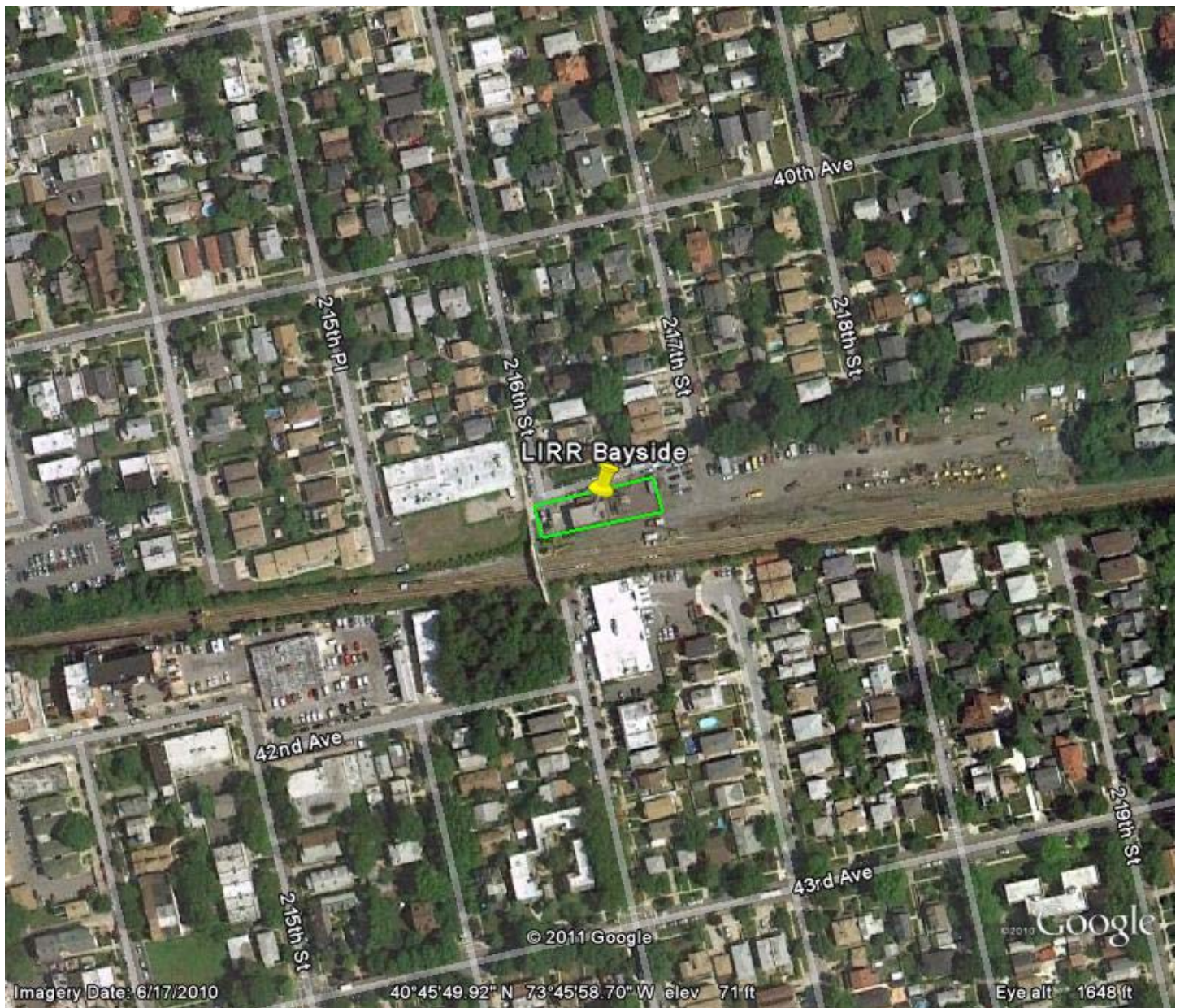


FIGURE 1 - SITE LOCATION MAP