

Con Edison Former MGP Site (OU-2)  
White Plains, NY  
Final Engineering Report  
Photo Log

Pre-Remediation Site Conditions  
Removal of Previous Fencing  
October 29, 2008



Pre-Remediation Site Conditions  
Switchyard Area (area behind fence)  
November 2, 2008



Pre-Remediation Site Conditions  
South Side of Parking Lot  
November 2, 2008



Pre-Remediation Site Conditions  
Switchyard Area (area behind fence)  
November 2, 2008



Con Edison Former MGP Site (OU-2)  
White Plains, NY  
Final Engineering Report  
Photo Log

Pre-Remediation Site Conditions  
Installed Temporary Fencing Along Water Street  
October 29, 2008



Pre-Remediation Site Conditions  
Installation of Privacy Fabric on Temporary Fencing  
October 30, 2008



Pre-Remediation Site Conditions  
North Central Area Facing East  
November 6, 2008



Pre-Remediation Site Conditions  
South Central Area Facing East  
November 6, 2008



Con Edison Former MGP Site (OU-2)  
White Plains, NY  
Final Engineering Report  
Photo Log

Switchyard Demo & Asbestos Abatement  
Initial Demo with Hydraulic Hammer  
November 21, 2008



Switchyard Demo & Asbestos Abatement  
Demo of Surface Concrete Layer  
November 26, 2008



Switchyard Demo & Asbestos Abatement  
Overhead View of Switchyard Demolition  
December 1, 2008



Switchyard Demo & Asbestos Abatement  
Excavation of Switchyard Foundation  
December 3, 2008



Con Edison Former MGP Site (OU-2)  
White Plains, NY  
Final Engineering Report  
Photo Log

Switchyard Demo & Asbestos Abatement  
Loading C&D Material for Off-site disposal  
December 5, 2008



Switchyard Demo & Asbestos Abatement  
Stockpile of C&D Material  
December 6, 2008



Switchyard Demo & Asbestos Abatement  
Loading C&D Material for Off-site Disposal  
December 9, 2008



Switchyard Demo & Asbestos Abatement  
Applying Rusmar Foam for Odor Control  
December 15, 2008



Con Edison Former MGP Site (OU-2)  
White Plains, NY  
Final Engineering Report  
Photo Log

Switchyard Demo & Asbestos Abatement  
Removal of ACM Duct Banks  
December 13, 2008



Switchyard Demo & Asbestos Abatement  
Excavation for Electrical Manhole #3  
December 16, 2008



Switchyard Demo & Asbestos Abatement  
Removal of Subsurface Pipe  
December 12, 2008



Switchyard Demo & Asbestos Abatement  
Removal of Switchyard Foundation Elements  
December 16, 2008



Con Edison Former MGP Site (OU-2)  
White Plains, NY  
Final Engineering Report  
Photo Log

Instrumentation & Monitoring  
CAMP Station  
February 13, 2009



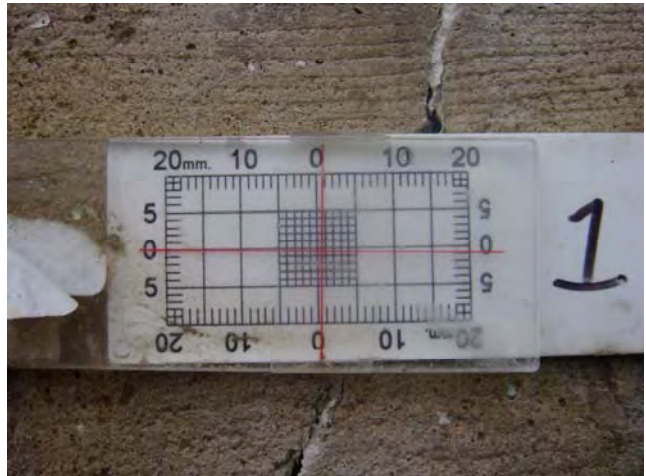
Instrumentation & Monitoring  
CAMP VOC & Dust Monitors  
February 13, 2009



Instrumentation & Monitoring  
Installation of Tiltmeters  
March 25, 2009



Instrumentation & Monitoring  
Crack Gauge Photo  
July 1, 2009



Con Edison Former MGP Site (OU-2)  
White Plains, NY  
Final Engineering Report  
Photo Log

ISS - Mobilization  
Placing Reagent Mixing Tub  
January 9, 2009



ISS - Mobilization  
Crane Placing Slag Silo  
January 20, 2009



ISS - Mobilization  
Crane Placing Portland Silo  
January 20, 2009



ISS - Mobilization  
Batch Plant Setup Complete  
January 27, 2009



Con Edison Former MGP Site (OU-2)  
White Plains, NY  
Final Engineering Report  
Photo Log

Excavator ISS – Test Cell Mixing  
Excavator Mixing Test Cell TP-1  
January 22, 2009



Excavator ISS – Test Cell Mixing  
Excavator Mixing Test Cell TP-1  
January 22, 2009



Excavator ISS – Test Cell Mixing  
Excavator Mixing Test Cell TP-1 (remix)  
January 26, 2009



Excavator ISS – Test Cell Mixing  
Excavator Mixing Test Cell TP-2  
January 27, 2009



Con Edison Former MGP Site (OU-2)  
White Plains, NY  
Final Engineering Report  
Photo Log

Excavator ISS – Cell Mixing  
Excavation Prior to Addition of Reagent for Cell EM-2  
February 10, 2009



Excavator ISS – Cell Mixing  
Excavator Mixing Test Cell TP-2  
January 27, 2009



Excavator ISS – Cell Mixing  
Excavator Mixing Test Cell TP-2  
January 27, 2009



Excavator ISS – Cell Mixing  
Excavator Mixing Test Cell TP-3  
January 28, 2009



Con Edison Former MGP Site (OU-2)  
White Plains, NY  
Final Engineering Report  
Photo Log

Excavator ISS – Cell Mixing  
Excavation Prior to Addition of Reagent for Cell P-9  
February 3, 2009



Excavator ISS – Cell Mixing  
Excavator Mixing Cell P-13  
February 7, 2009



Excavator ISS – Cell Mixing  
Excavator Mixing Cell P-2  
February 21, 2009



Excavator ISS – Cell Mixing  
Excavator Mixing Test Cell EM-9  
February 24, 2009



Con Edison Former MGP Site (OU-2)  
White Plains, NY  
Final Engineering Report  
Photo Log

Excavator ISS – Lowering top elevation of ISS  
Scraping Down Top of ISS Monolith  
February 25, 2009



Excavator ISS – Lowering top elevation of ISS  
Loading ISS Material for Off-site Disposal  
March 6, 2009



Excavator ISS – Lowering top elevation of ISS  
Scraping Down Top of ISS Monolith  
March 6, 2009



Excavator ISS – Lowering top elevation of ISS  
Scraping Down Top of ISS Monolith  
March 11, 2009



Con Edison Former MGP Site (OU-2)  
White Plains, NY  
Final Engineering Report  
Photo Log

Backfill Placement & Compaction (East Side)  
Unloading Item #4 Backfill Material  
March 20, 2009



Backfill Placement & Compaction (East Side)  
Spreading Item #4 Backfill Material  
March 24, 2009



Backfill Placement & Compaction (East Side)  
Compacting Item #4 Backfill Material  
March 24, 2009



Backfill Placement & Compaction (East Side)  
Loading Baker Tank on Completed Backfill  
March 24, 2009



Con Edison Former MGP Site (OU-2)  
White Plains, NY  
Final Engineering Report  
Photo Log

Demo of Structures for West Side  
Excavating Pavement  
March 26, 2009



Demo of Structures for West Side  
Excavating Pavement and Subsurface Structures  
March 26, 2009



Demo of Structures for West Side  
Remnant Foundation to be Excavated  
March 26, 2009



Demo of Structures for West Side  
Excavated Subsurface Structures  
March 26, 2009



Con Edison Former MGP Site (OU-2)  
White Plains, NY  
Final Engineering Report  
Photo Log

Demo of Structures for West Side  
Excavated Pavement and Substructures  
March 26, 2009



Demo of Structures for West Side  
Excavating Subsurface Structures  
March 27, 2009



Demo of Structures for West Side  
BioSolve Sprayed to Reduce Odors  
March 27, 2009



Demo of Structures for West Side  
Stockpiling Subsurface Structures  
March 27, 2009



Con Edison Former MGP Site (OU-2)  
White Plains, NY  
Final Engineering Report  
Photo Log

Auger ISS - Mobilization  
Crane Assembly  
February 12, 2009



Auger ISS - Mobilization  
Crane Assembly  
February 12, 2009



Auger ISS - Mobilization  
Mounting Drilling Platform to Crane  
March 3, 2009



Auger ISS - Mobilization  
Mounting Drilling Platform to Crane  
March 4, 2009



Con Edison Former MGP Site (OU-2)  
White Plains, NY  
Final Engineering Report  
Photo Log

Auger ISS - Mobilization  
Attaching Kelly Bar to Drilling Platform  
March 26, 2009



Auger ISS - Mobilization  
Attaching Kelly Bar to Drilling Platform  
March 27, 2009



Auger ISS - Mobilization  
9-foot Diameter Auger Attached to Kelly bar  
March 27, 2009



Auger ISS - Mobilization  
Completed Assembly of Crane and Drilling Platform  
March 27, 2009



Con Edison Former MGP Site (OU-2)  
White Plains, NY  
Final Engineering Report  
Photo Log

Auger ISS – Test Column Installation  
Auger Rig Set-up on Test Column Location M-10  
March 30, 2009



Auger ISS – Test Column Installation  
Auger Rig Mixing Test Column M-10  
March 30, 2009



Auger ISS – Test Column Installation  
Pulling Auger Out of Installed Test Column M-10  
March 30, 2009



Auger ISS – Test Column Installation  
Cleaning Out Grout Ports on Auger  
March 30, 2009



Con Edison Former MGP Site (OU-2)  
White Plains, NY  
Final Engineering Report  
Photo Log

Auger ISS - Test Coring Program  
Test Core Drill Locations Staked Out  
April 7, 2009



Auger ISS - Test Coring Program  
Drill rig (CME-55) for Test Core Sampling  
April 7, 2009



Auger ISS - Test Coring Program  
Drill Rig (CME-55) for Test Core Sampling  
April 7, 2009



Auger ISS - Test Coring Program  
Drill rig (CME-55) for Test Core Sampling  
April 9, 2009



Con Edison Former MGP Site (OU-2)  
White Plains, NY  
Final Engineering Report  
Photo Log

Auger ISS – Drilling Activities  
Auger Rig Set-up on Column Location M-3  
April 7, 2009



Auger ISS – Drilling Activities  
Auger Rig Setup on Column Location M-3  
April 7, 2009



Auger ISS – Drilling Activities  
Auger Rig Mixing Column 8G5  
July 9, 2009



Auger ISS – Drilling Activities  
Auger Rig Mixing Column 8L4  
July 24, 2009



Con Edison Former MGP Site (OU-2)  
White Plains, NY  
Final Engineering Report  
Photo Log

Excavator ISS – Delineation Borings  
Collecting ISS Core Samples  
May 12, 2009



Excavator ISS – Delineation Borings  
Collecting ISS Core Samples  
May 14, 2009



Excavator ISS – Delineation Borings  
Rotasonic Drilling  
May 16, 2009



Excavator ISS – Delineation Borings  
Rotasonic Drilling  
May 16, 2009



Con Edison Former MGP Site (OU-2)  
White Plains, NY  
Final Engineering Report  
Photo Log

Auger ISS – Sampling  
Collecting Grout Sample for Test Column M-10  
March 30, 2009



Auger ISS – Sampling  
Collecting Grout Sample for Test Column M-10  
March 30, 2009



Auger ISS – Sampling  
Collecting Grout Sample for Column 8x4  
July 28, 2009



Auger ISS – Sampling  
Collecting Grout Sample for Column 8x4  
July 28, 2009



Con Edison Former MGP Site (OU-2)  
White Plains, NY  
Final Engineering Report  
Photo Log

Auger ISS – Demobilization  
Disassembled Drilling Platform & Kelly bar  
August 8, 2009



Auger ISS – Demobilization  
Drilling Platform Loaded onto Truck  
August 8, 2009



Auger ISS - Demobilization  
Dismantling of Crane  
August 12, 2009



Auger ISS - Demobilization  
Dismantling of Crane  
August 12, 2009



Con Edison Former MGP Site (OU-2)  
White Plains, NY  
Final Engineering Report  
Photo Log

Auger ISS – Various Auger Sizes  
9-foot and 8-foot Diameter Augers  
February 25, 2009



Auger ISS – Various Auger Sizes  
6-foot Diameter Auger  
May 5, 2009



Auger ISS – Various Auger Sizes  
4-foot Diameter Auger  
May 28, 2009



Auger ISS – Various Auger Sizes  
8-foot Diameter Auger (“aggressive” design)  
July 24, 2009



Con Edison Former MGP Site (OU-2)  
White Plains, NY  
Final Engineering Report  
Photo Log

Jet Grouting - Mobilization  
Test Column Jet Grout Rig Arrived On-site and Set-up  
June 25, 2009



Jet Grouting - Mobilization  
Test Column Jet Grout Rig Set-up for Test Column  
June 29, 2009



Jet Grouting - Mobilization  
Production Jet grout Rig Arrived On-site  
August 17, 2009



Jet Grouting - Mobilization  
Setting Up Jet Grout Production Rig  
August 17, 2009



Con Edison Former MGP Site (OU-2)  
White Plains, NY  
Final Engineering Report  
Photo Log

Jet Grouting – Test Column Installation  
Installation of Jet grout Test Column JG-1  
June 26, 2009



Jet Grouting – Test Column Installation  
Installation of Jet Grout Test Column JG-1  
June 26, 2009



Jet Grouting – Test Column Installation  
Installation of Jet grout Test Column JG-3  
June 29, 2009



Jet Grouting – Test Column Installation  
Installation of Jet grout Test Column JG-3  
June 29, 2009



Con Edison Former MGP Site (OU-2)  
White Plains, NY  
Final Engineering Report  
Photo Log

Jet Grouting – Test Cores  
Collecting ISS Core from Test Column JG-Test-6  
July 10, 2009



Jet Grouting – Test Cores  
Observing ISS Core from Test Column JG-Test-6  
July 11, 2009



Jet Grouting – Test Cores  
Collecting ISS Core from Test column JG-Test-2  
July 15, 2009



Jet Grouting – Test Cores  
Core Boxes Containing ISS Cores  
July 15, 2009



Con Edison Former MGP Site (OU-2)  
White Plains, NY  
Final Engineering Report  
Photo Log

Jet Grouting – Column Installation Activities  
Jet grout production Rig (Amco Vega Comacchio MC 1200)  
August 18, 2009



Jet Grouting – Column Installation Activities  
Jet grout production Rig (Amco Vega Comacchio MC 1200)  
August 18, 2009



Jet Grouting – Column Installation Activities  
Installing Jet Grout Column SI-16  
November 5, 2009



Jet Grouting – Column Installation Activities  
Installing Jet grout Column Int-88  
December 9, 2009



Con Edison Former MGP Site (OU-2)  
White Plains, NY  
Final Engineering Report  
Photo Log

Jet Grouting – Column Installation Activities  
Installing Jet Grout Column WO-5  
December 15, 2009



Jet Grouting – Column Installation Activities  
Jet Grout Spoils Sump Collection Areas  
February 24, 2009



Jet Grouting – Column Installation Activities  
Installing Jet Grout Column EI-21  
April 5, 2010



Jet Grouting – Column Installation Activities  
Jet grout Batch Plant Area  
April 14, 2010



Con Edison Former MGP Site (OU-2)  
White Plains, NY  
Final Engineering Report  
Photo Log

Jet Grouting – Sampling  
Measuring Grout Density with Mud Balance  
July 26, 2009



Jet Grouting – Sampling  
Preparing Grout Cylinder  
July 26, 2009



Jet Grouting – Sampling  
Grout Cylinders and Grout Cubes  
July 29, 2009



Jet Grouting – Sampling  
Measuring Grout Density with Mud Balance  
July 26, 2009



Con Edison Former MGP Site (OU-2)  
White Plains, NY  
Final Engineering Report  
Photo Log

Jet Grouting – Spoils Collection and Load Out  
Jet Grout Spoils sump Collection Area  
September 22, 2009



Jet Grouting – Spoils Collection and Load Out  
Loading Jet Grout Spoils for Off-site Disposal  
September 29, 2009



Jet Grouting – Spoils Collection and Load Out  
Loading Jet Grout Spoils for Off-site Disposal  
October 15, 2009



Jet Grouting – Spoils Collection and Load Out  
Excavating Jet Grout Spoils  
October 22, 2009



Con Edison Former MGP Site (OU-2)  
White Plains, NY  
Final Engineering Report  
Photo Log

Jet Grouting – Demobilization  
Dismantling Batch Plant  
April 15, 2010



Jet Grouting – Demobilization  
Dismantling Batch Plant  
April 15, 2010



Jet Grouting – Demobilization  
Laying Down Reagent Silo  
April 15, 2010



Jet Grouting – Demobilization  
Reagent Silo Loaded onto Truck  
April 15, 2010



Con Edison Former MGP Site (OU-2)  
White Plains, NY  
Final Engineering Report  
Photo Log

Sidewalk Borings  
Hand clearance for SW-5  
May 11, 2010



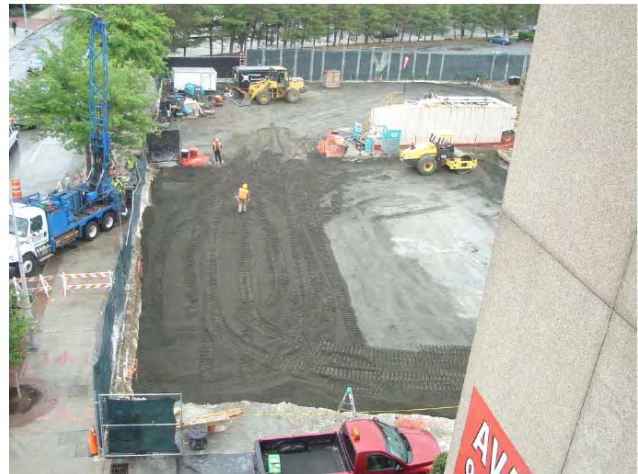
Sidewalk Borings  
Grout Observed in Sidewalk Sub-base in Hand Clearance  
for SW-4  
May 12, 2010



Sidewalk Borings  
Drilling and Collecting Samples for SW-3  
May 17, 2010



Sidewalk Borings  
Drilling SW-4 and Backfilling West Area  
May 17, 2010

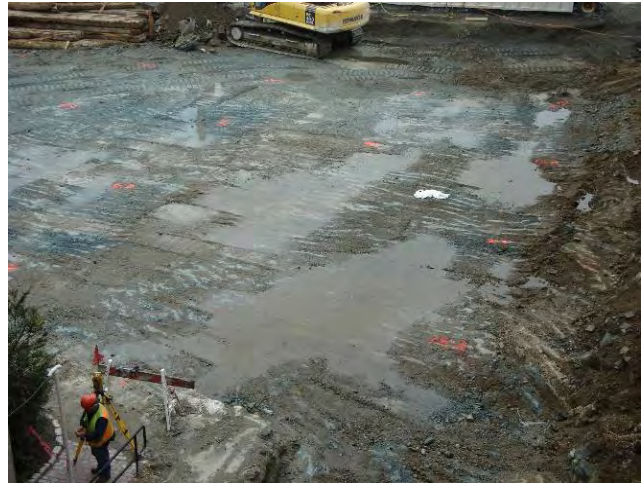


Con Edison Former MGP Site (OU-2)  
White Plains, NY  
Final Engineering Report  
Photo Log

Site Restoration – Lowering Site and Material Haul Out  
West Side of Site Lowered and Loaded for Off-site  
Disposal  
April 23, 2010



Site Restoration – Lowering Site and Material Haul Out  
West Side of Site Lowered  
April 26, 2010



Site Restoration – Lowering Site and Material Haul Out  
Stockpiling Material Scraped from Top of West Side  
May 11, 2010



Site Restoration – Lowering Site and Material Haul Out  
Stockpiling Material Scraped from Top of West Side  
May 11, 2010



Con Edison Former MGP Site (OU-2)  
White Plains, NY  
Final Engineering Report  
Photo Log

Site Restoration – Backfill  
Compacting Backfill Along East Perimeter of Site  
April 27, 2010



Site Restoration –Backfill  
Compaction Testing in Northeast Corner of Site  
April 29, 2010



Site Restoration –Backfill  
Compacting Backfill Along North Perimeter of Site  
May 5, 2010



Site Restoration –Backfill  
Compacting Backfill in Northwest Corner of Site  
May 15, 2010



Con Edison Former MGP Site (OU-2)  
White Plains, NY  
Final Engineering Report  
Photo Log

Site Restoration – Planter Wall Demolition  
Demolishing East Portion of Planter Wall  
April 6, 2010



Site Restoration – Planter Wall Demolition  
Demolishing Central Portion of Planter Wall  
April 6, 2010



Site Restoration – Planter Wall Demolition  
Demolishing West Central Portion of Planter Wall  
April 6, 2010



Site Restoration – Planter Wall Demolition  
Demolishing West Portion of Planter Wall  
April 6, 2010



Con Edison Former MGP Site (OU-2)  
 White Plains, NY  
 Final Engineering Report  
 Photo Log

Hot Spot Delineation Borings  
 Preparing to Collect Sample at Location DB-9  
 April 29, 2009



Hot Spot Delineation Borings  
 Sample Collected from Location DB-9  
 April 29, 2009



Hot Spot Delineation Borings  
 Retrieving Bedrock Core from Location DB-9  
 April 29, 2009



Hot Spot Delineation Borings  
 Bedrock Core from Location DB-9  
 April 29, 2009



Con Edison Former MGP Site (OU-2)  
White Plains, NY  
Final Engineering Report  
Photo Log

Site Restoration – Voids under retaining wall footing  
Void Under Central Portion of Footing  
April 29, 2010



Site Restoration – Voids under retaining wall footing  
Void under Eastern Portion of Footing  
April 29, 2010



Site Restoration – Voids under retaining wall footing  
Void under Central Portion of Footing  
April 29, 2010



Site Restoration – Voids under retaining wall footing  
Void under Western Portion of Footing  
April 29, 2010



Con Edison Former MGP Site (OU-2)  
White Plains, NY  
Final Engineering Report  
Photo Log

Site Restoration – Voids under Retaining Wall Footing  
Placing Forms to Fill in Voids  
June 3, 2010



Site Restoration – Voids under Retaining Wall Footing  
Placing Forms to Fill in Voids  
June 3, 2010



Site Restoration – Voids under Retaining Wall Footing  
Placing Forms to Fill in Voids  
June 3, 2010



Site Restoration – Voids under Retaining Wall Footing  
Pumping Cellular Concrete into Form  
June 7, 2010



Con Edison Former MGP Site (OU-2)  
White Plains, NY  
Final Engineering Report  
Photo Log

Site Restoration – Retaining Wall  
Forms Filled with Cellular Concrete  
June 7, 2010



Site Restoration – Retaining Wall  
Forms Filled with Cellular Concrete  
June 7, 2010



Site Restoration – Retaining Wall  
Removing forms from Cellular Concrete Pour  
June 14, 2010

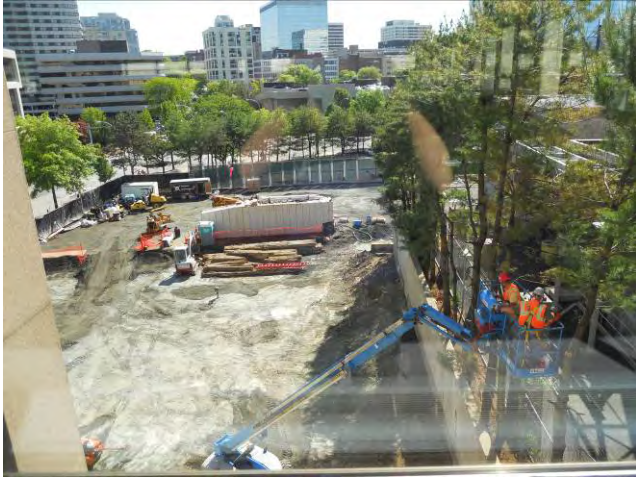


Site Restoration – Retaining Wall  
Forms removed from Cellular Concrete Pour  
June 14, 2010



Con Edison Former MGP Site (OU-2)  
White Plains, NY  
Final Engineering Report  
Photo Log

Site Restoration – Tree Removal along Retaining Wall  
Removing Trees Along Substation Retaining Wall  
May 13, 2010



Site Restoration – Tree Removal along Retaining Wall  
Removing Trees Along Substation Retaining Wall  
May 13, 2010



Site Restoration – Tree Removal along Retaining Wall  
Removing Trees Along Substation Retaining Wall  
May 13, 2010



Site Restoration – Tree Removal along Retaining Wall  
Removing Trees Along Substation Retaining Wall  
May 13, 2010



Con Edison Former MGP Site (OU-2)  
White Plains, NY  
Final Engineering Report  
Photo Log

Site Restoration – Dumpster pad construction  
Forms and Rebar for Dumpster Pad  
August 4, 2010



Site Restoration – Dumpster pad construction  
Performing Slump Test for Dumpster Pad Concrete  
August 3, 2010



Site Restoration – Dumpster pad construction  
Concrete Pour for Dumpster Pad  
August 3, 2010



Site Restoration – Dumpster pad construction  
Concrete Pour for Dumpster Pad  
August 4, 2010



Con Edison Former MGP Site (OU-2)  
White Plains, NY  
Final Engineering Report  
Photo Log

Site Restoration – Lighting  
Excavation for Light Pole Base Construction  
July 16, 2010



Site Restoration – Lighting  
Placing Light Pole Base Form in Excavation  
July 19, 2010



Site Restoration – Lighting  
Leveling Light Pole Base Form  
July 29, 2010



Site Restoration – Lighting  
Rebar Cage Placed in Light Pole Base Form  
July 29, 2010



Con Edison Former MGP Site (OU-2)  
White Plains, NY  
Final Engineering Report  
Photo Log

Site Restoration – Lighting  
Anchor Bolts and Conduits Placed in Light Pole Base Form  
July 27, 2010



Site Restoration – Lighting  
Concrete Pour for Light Pole Base  
July 29, 2010



Site Restoration – Lighting  
Concrete Pour for Light Pole Base  
July 28, 2010



Site Restoration – Lighting  
Wiring Electrical Connections at Light Pole Base  
August 21, 2010



Con Edison Former MGP Site (OU-2)  
White Plains, NY  
Final Engineering Report  
Photo Log

Site Restoration – Lighting  
Placing Light Pole on Light Pole Base  
August 16, 2010



Site Restoration – Lighting  
Conduit run Between Light Bollard Bases  
August 16, 2010



Site Restoration – Lighting  
Light bollards and Wall Wash Lights and Grounding Rods  
August 16, 2010



Site Restoration – Lighting  
Electrical Grounding Rods (not fully driven into ground)  
August 21, 2010



Con Edison Former MGP Site (OU-2)  
White Plains, NY  
Final Engineering Report  
Photo Log

Site Restoration – Hydrodynamic Separators  
Excavating for Hydrodynamic Separator CB-2  
July 8, 2010



Site Restoration – Hydrodynamic Separators  
Excavation for Hydrodynamic Separator CB-2  
July 8, 2010



Site Restoration – Hydrodynamic Separators  
Lowering Base of Hydrodynamic Separator CB-2  
July 8, 2010



Site Restoration – Hydrodynamic Separators  
Placing Top of Hydrodynamic Separator CB-1  
July 13, 2010



Con Edison Former MGP Site (OU-2)  
White Plains, NY  
Final Engineering Report  
Photo Log

Site Restoration – Hydrodynamic Separator  
Hydrodynamic Separator CB-2  
July 13, 2010



Site Restoration – Hydrodynamic Separator  
Hydrodynamic Separator CB-1  
July 13, 2010



Site Restoration – Hydrodynamic Separator  
Connection from CB-1 Trench Drain to Separator  
July 21, 2010



Site Restoration – Hydrodynamic Separator  
Connections Made to CB-2 Separator  
July 30, 2010



Con Edison Former MGP Site (OU-2)  
White Plains, NY  
Final Engineering Report  
Photo Log

Site Restoration – Curbing  
New street Curbing prior to Concrete Pour  
August 13, 2010



Site Restoration – Curbing  
Concrete Poured around New Street Curb  
August 13, 2010



Site Restoration – Curbing  
Placing granite Block Curb in Southwest corner  
August 5, 2010



Site Restoration – Curbing  
Finishing Curb Blocks for Central Planter Area  
August 11, 2010



Con Edison Former MGP Site (OU-2)  
White Plains, NY  
Final Engineering Report  
Photo Log

Site Restoration – Trench Drains  
Forms for Trench Drain CB-2  
July 22, 2010



Site Restoration – Trench Drains  
Forms and Partial Rebar for Trench Drain CB-1  
July 23, 2010



Site Restoration – Trench Drains  
Forms and rebar for Trench Drain CB-1  
July 26, 2010



Site Restoration – Trench Drains  
Concrete pour for Trench Drain CB-2  
July 27, 2010



Con Edison Former MGP Site (OU-2)  
White Plains, NY  
Final Engineering Report  
Photo Log

Site Restoration – Trench Drains  
Finishing Concrete for Trench Drain CB-2  
July 27, 2010



Site Restoration – Trench Drains  
Concrete Poured for Trench Drain CB-1  
July 28, 2010



Site Restoration – Trench Drains  
Concrete Forms Removed from Trench Drain CB-2  
July 28, 2010



Site Restoration – Trench Drains  
Concrete Forms Removed from Trench Drain CB-2  
August 11, 2010



Con Edison Former MGP Site (OU-2)  
White Plains, NY  
Final Engineering Report  
Photo Log

Site Restoration – Entrance Driveway Construction  
Concrete Forms and Rebar for East Entrance Drive  
August 5, 2010



Site Restoration – Entrance Drive Construction  
Concrete Pour for East Entrance Drive  
August 5, 2010



Site Restoration – Entrance Drive Construction  
Complete Pour for East Entrance Drive  
August 5, 2010



Site Restoration – Entrance Drive Construction  
Concrete Pour for West Entrance Drive  
August 10, 2010



Con Edison Former MGP Site (OU-2)  
White Plains, NY  
Final Engineering Report  
Photo Log

Site Restoration – Sidewalk Construction  
Concrete forms for Sidewalk Sections  
August 6, 2010



Site Restoration – Sidewalk Construction  
Concrete Forms and Rebar for Sidewalk Sections  
August 6, 2010



Site Restoration – Sidewalk Construction  
Concrete Pour for Sidewalk Section  
August 17, 2010



Site Restoration – Sidewalk Construction  
Concrete Pour for Sidewalk Section  
August 17, 2010



Con Edison Former MGP Site (OU-2)  
White Plains, NY  
Final Engineering Report  
Photo Log

Site Restoration – Sidewalk Construction  
Concrete Pour for Sidewalk Section  
August 11, 2010



Site Restoration – Sidewalk Construction  
Concrete Finishing for Sidewalk Section  
August 11, 2010



Site Restoration – Sidewalk Construction  
Concrete Finishing for Sidewalk Section  
August 17, 2010



Site Restoration – Sidewalk Construction  
Finished Sidewalk Section  
August 17, 2010



Con Edison Former MGP Site (OU-2)  
White Plains, NY  
Final Engineering Report  
Photo Log

Site Restoration – Sidewalk Construction  
Concrete Pour for Stamped Concrete  
August 19, 2010



Site Restoration – Sidewalk Construction  
Concrete Pour for Stamped Concrete  
August 19, 2010



Site Restoration – Sidewalk Construction  
Stamping Brick Pattern into Concrete  
August 19, 2010



Site Restoration – Sidewalk Construction  
Completed Stamped Concrete  
August 19, 2010



Con Edison Former MGP Site (OU-2)  
White Plains, NY  
Final Engineering Report  
Photo Log

Site Restoration – Planter Wall Stucco Reconstruction  
Concrete Footing  
June 28, 2010



Site Restoration – Planter Wall Stucco Reconstruction  
Initial Masonry Courses  
July 8, 2010



Site Restoration – Planter Wall Stucco Reconstruction  
Masonry Block  
July 8, 2010



Site Restoration – Planter Wall Stucco Reconstruction  
Masonry Block with Reinforcing  
July 9, 2010



Con Edison Former MGP Site (OU-2)  
White Plains, NY  
Final Engineering Report  
Photo Log

Site Restoration – Planter Wall Stucco Reconstruction  
Concrete Wash Behind Planter Wall  
July 9, 2010



Site Restoration – Planter Wall Stucco Reconstruction  
Final Masonry Courses  
July 15, 2010



Site Restoration – Planter Wall Stucco Reconstruction  
Concrete Cap Installation  
August 25, 2010



Site Restoration – Planter Wall Stucco Reconstruction  
Completed Planter Wall  
August 28, 2010



Con Edison Former MGP Site (OU-2)  
White Plains, NY  
Final Engineering Report  
Photo Log

Site Restoration – Retaining Wall Stucco Installation  
Filling Cracks in Retaining Wall  
August 12, 2010



Site Restoration – Retaining Wall Stucco Installation  
Z-stud Installation Over Crack #4  
August 14, 2010



Site Restoration – Retaining Wall Stucco Installation  
Z-stud Installation Over Crack #11  
August 14, 2010



Site Restoration – Retaining Wall Stucco Installation  
Dens Glass Sheeting Installation  
August 16, 2010



Con Edison Former MGP Site (OU-2)  
White Plains, NY  
Final Engineering Report  
Photo Log

Site Restoration – Retaining Wall  
Insulation Board Placed over Dens Glass  
August 17, 2010



Site Restoration – Retaining Wall  
Application of Final Stucco Finish  
August 18, 2010



Site Restoration – Retaining Wall  
Application of Final Stucco Finish  
August 20, 2010



Site Restoration – Retaining Wall  
Installed Coping  
August 27, 2010



Con Edison Former MGP Site (OU-2)  
White Plains, NY  
Final Engineering Report  
Photo Log

Site Restoration – Fence Installation  
Installing Fence Posts into Concrete along South Perimeter  
August 17, 2010



Site Restoration – Fence Installation  
Fence Post Installation for Dumpster Pad  
August 18, 2010



Site Restoration – Fence Installation  
Fence Fabric Installed onto Dumpster Pad Fence Posts  
August 19, 2010



Site Restoration – Fence Installation  
Privacy Screen Installed over Fence Fabric  
August 20, 2010



Con Edison Former MGP Site (OU-2)  
White Plains, NY  
Final Engineering Report  
Photo Log

Site Restoration – Guide Rail  
Installing Guide Rail Posts  
August 24, 2010



Site Restoration – Fence Installation  
Installing Rail Portion of Guide Rail  
August 25, 2010



Site Restoration – Fence Installation  
Installing Rail Portion of Guide Rail  
August 25, 2010



Site Restoration – Fence Installation  
Completed Guide Rail  
August 25, 2010



Con Edison Former MGP Site (OU-2)  
White Plains, NY  
Final Engineering Report  
Photo Log

Site Restoration – Power Wash of Firewall  
Power Washing Firewall  
August 19, 2010



Site Restoration – Power Wash of Firewall  
Power Washing Firewall  
August 19, 2010



Site Restoration – Power Wash of Firewall  
Power Wash Completed  
August 19, 2010



Site Restoration – Lower Substation Wall  
Second Application of Thorocoat  
August 30, 2010



Con Edison Former MGP Site (OU-2)  
White Plains, NY  
Final Engineering Report  
Photo Log

Site Restoration – Asphalt Placement  
Placing Asphalt Base Course along Western Perimeter  
August 24, 2010



Site Restoration – Asphalt Placement  
Placing Asphalt Base Course in Central Area of site  
August 24, 2010



Site Restoration – Asphalt Placement  
Compacting Asphalt Base Course  
August 24, 2010



Site Restoration – Asphalt Placement  
Completing Asphalt Base Course Placement & Compaction  
August 24, 2010



Con Edison Former MGP Site (OU-2)  
White Plains, NY  
Final Engineering Report  
Photo Log

Site Restoration – Asphalt Placement  
Placement of Tack Coat  
August 28, 2010



Site Restoration – Asphalt Placement  
Placement of Top Course and Checking Grade  
August 27, 2010



Site Restoration – Asphalt Placement  
Completed Top Course  
August 27, 2010



Site Restoration – Asphalt Placement  
Painting Parking Space Lines  
August 27, 2010



Con Edison Former MGP Site (OU-2)  
White Plains, NY  
Final Engineering Report  
Photo Log

Site Restoration – Substation area (ISS Staging Area)  
Spreading Crushed Stone Layer  
August 31, 2010



Site Restoration – Substation area (ISS Staging Area)  
Crushed Stone Layer Placed in Substation Area  
August 31, 2010



Site Restoration – Northern Area  
View Looking East  
August 28, 2010



Site Restoration – Southern Area  
View Looking East  
August 30, 2010



Con Edison Former MGP Site (OU-2)  
White Plains, NY  
Final Engineering Report  
Photo Log

Site Restoration – Plantings  
Planting tree in Northwest planter island  
August 25, 2010



Site Restoration – Plantings  
Plantings in Alcove Area  
August 25, 2010



Site Restoration – Plantings  
Plantings Near East Entrance Drive  
August 26, 2010



Site Restoration – Plantings  
Plantings along Water Street Sidewalk  
August 28, 2010



Con Edison Former MGP Site (OU-2)  
White Plains, NY  
Final Engineering Report  
Photo Log

Site Restoration – Plantings  
Completed Plantings in Alcove Area  
September 1, 2010



Site Restoration – Plantings  
Completed Plantings on East Side of 12 Water St. Building  
September 1, 2010



Site Restoration – Plantings  
Completed Plantings Along 12 Water Street Sidewalk  
September 1, 2010



Site Restoration – Plantings  
Completed Plantings Along 12 Water Street Sidewalk  
September 1, 2010



Con Edison Former MGP Site (OU-2)  
White Plains, NY  
Final Engineering Report  
Photo Log

Site Restoration – Plantings  
Completed Plantings at Northeast Corner  
September 1, 2010



Site Restoration – Plantings  
Completed Plantings at Southeast Corner  
September 1, 2010



Site Restoration – Plantings  
Completed Plantings at Central Planter Area  
September 1, 2010



Site Restoration – Plantings  
Completed Plantings in Alcove Area  
September 1, 2010

