



*In conjunction with*



# Fact Sheet

March 2012

## Ossining Gas Works

### Start of Remedial Investigation at Ossining Gas Works

#### Dear Interested Citizen:

**This fact sheet is to inform you of the remedial investigation planned for the former Ossining Gas Works.**

**If you have questions or would like more information, please contact:**

Jim O'Toole  
Con Edison  
511 Theodore Fremd  
Rye, NY 10580  
Toll-free (877) 602-6633

**For site-related environmental questions, please contact:**

Matt Hubicki  
Project Manager  
NYSDEC  
625 Broadway  
Albany, NY 12233  
(518) 402-9662  
[mshubick@gw.dec.state.ny.us](mailto:mshubick@gw.dec.state.ny.us)

**For site-related health questions, please contact:**

Tony Perretta  
NYSDOH  
Flanigan Square, Rm. 300  
547 River Street  
Troy, NY 12180  
(845) 402-7880

[BEEI@health.state.ny.us](mailto:BEEI@health.state.ny.us)

## Introduction

Consolidated Edison Company of New York, Inc. (Con Edison), together with the New York State Department of Environmental Conservation (NYSDEC) and the New York State Department of Health (NYSDOH), is providing this fact sheet on activities planned for the former Ossining Gas Works, a property that is the site of a historical manufactured gas plant (MGP). The MGP site currently comprises the new Con Edison substation facility on Central Street, and the Ossining DPW yard between Central, Main, and North Water Streets.

## What are former MGPs?

Manufactured gas plants were operated between the 1800s and mid-1900s, before the development of natural gas systems, to convert coal and oil into gas for heating, lighting and cooking. Byproducts of this early production process included contaminants such as tar and purifier wastes. Tar is a dark, viscous fluid with a distinctive acrid odor. Purifier wastes are materials formed during removal of other unwanted chemicals from the gas before it was sent out to customers.

The substances of concern related to these operations include BTEX compounds, polycyclic aromatic hydrocarbons (PAHs), and metals. BTEX compounds are benzene, toluene, ethylbenzene and xylene. These are volatile hydrocarbons found in MGP byproducts and also found in most petroleum products such as gasoline. PAHs are also found in MGP byproducts as well as many petroleum products, such as asphalt.

## Project Status and Schedule

A Site Characterization Study has previously been conducted which identified coal tars beneath the ground within the DPW property and commuter parking lot. In order to further delineate the extent of contamination beneath the ground, Con Edison has developed a remedial Investigation Work Plan in conjunction with NYSDEC. The scope of work involves trenching in the DPW and a drill a series of soil borings and groundwater monitoring wells in and around the commuter parking lot and station.

---

#### Documents related to this project are available at the following locations:

Ossining Library, 53 Croton Avenue, Ossining, NY 10562. Hours of Operation: Monday through Thursday 9am to 9pm, Friday and Saturday 9am to 5:30pm, Sunday Noon to 5pm.

## Potential Exposure

A primary goal of these investigations is to evaluate actual and potential risk to the public through exposure to contaminants from these historical operations. An exposure assessment was completed as part of the Site Characterization to determine if people are currently being exposed to site-related contaminants or may be exposed in the future to site-related contaminants. Because the contamination is beneath the ground surface, direct contact exposure to these materials is not anticipated. Exposure to contaminated groundwater through ingestion is not expected because this area is served by a municipal water system.

During the remedial investigation work extensive efforts will be made to protect the community from potential hazards. These will include placing physical barriers to prevent access to work areas and monitoring for contaminants in the air by using real-time air monitoring in accordance with the NYSDOH's Community Air Monitoring Plan. If any contamination is found that requires remediation, a remediation plan will be developed in cooperation with the NYSDEC and NYSDOH and reviewed by the public.

## Site Background

Con Edison has entered into an agreement with the NYSDEC to identify, investigate and, if necessary, remediate sites that were operated by Con Edison or its corporate predecessors as MGPs.

The former Ossining Gas Works site was located between Central Avenue and Main Street, on the east side of North Water Street, with a gas holder situated to the north of the main plant area on Central Avenue. Con Edison and one of its corporate predecessors operated the plant from the 1850's to the 1940's.

## Public Involvement

Public understanding and involvement are integral to a successful investigation and remediation program. To provide you with the most up-to-date and accurate information regarding manufactured gas plants, Con Edison has created a series of informational resources including fact sheets, a toll-free hotline, and internet content at [www.coned.com/publicissues](http://www.coned.com/publicissues). Information can also be found at the NYSDEC website at [www.dec.state.ny.us/website/der/mgp](http://www.dec.state.ny.us/website/der/mgp). In addition, a Citizen Participation Plan has been approved by NYSDEC that outlines the steps to be taken to provide for public participation in the remedial program for the site. Document repositories for site related documents have also been established so that concerned citizens can review available information. The document repositories are listed on the bottom of the front page.

### Receive Site Fact Sheets by Email

Have site information such as this fact sheet sent right to your email inbox.

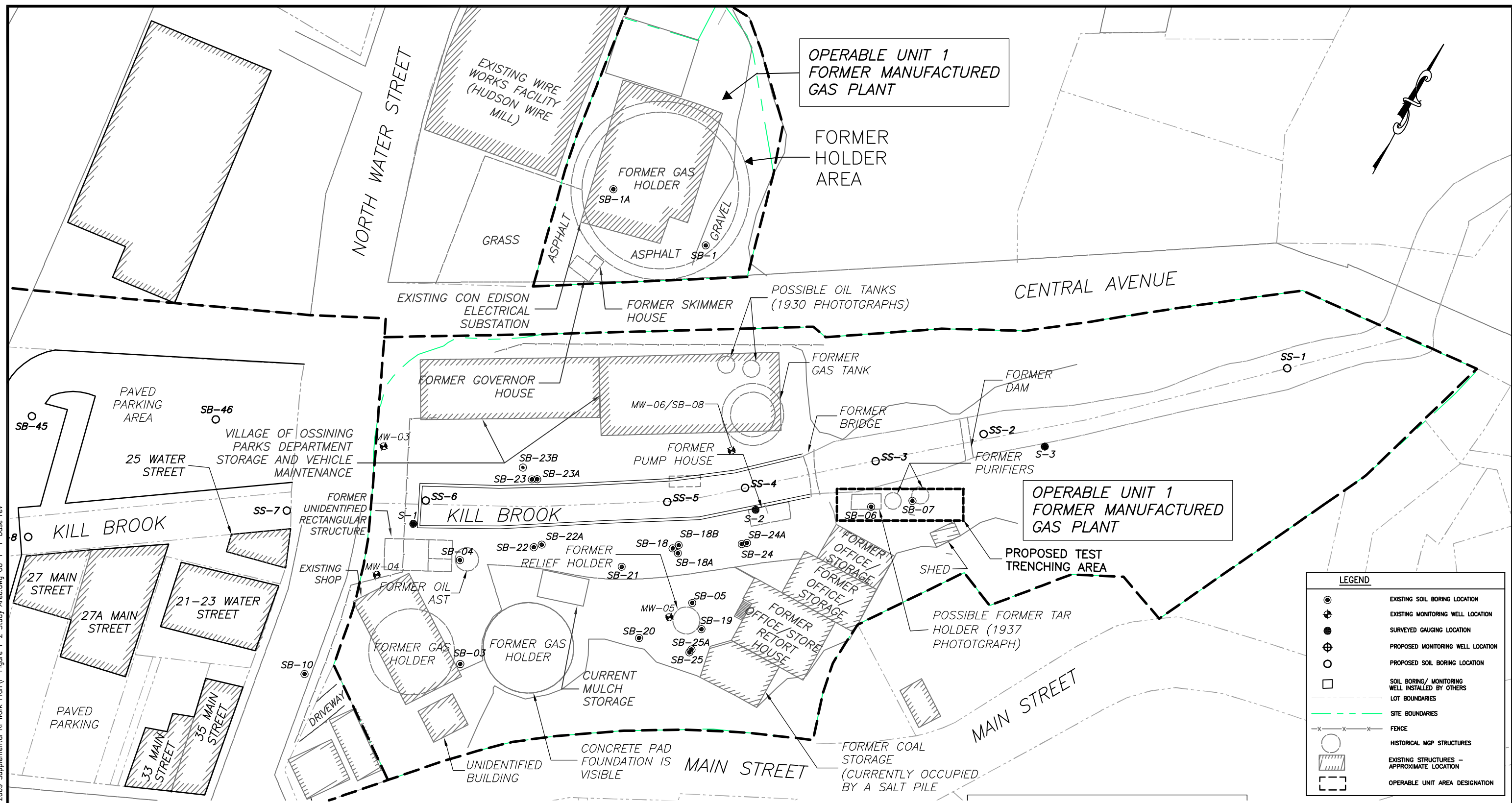
NYSDEC invites you to sign up with one or more contaminated sites county email listservs available at the following web page: [www.dec.ny.gov/chemical/61092.html](http://www.dec.ny.gov/chemical/61092.html). It's *quick*, it's *free*, and it will help keep you *better informed*.

As a listserv member, you will periodically receive site-related information/announcements for all contaminated sites in the county(ies) you select.

You may continue also to receive paper copies of site information for a time after you sign up with a county listserv, until the transition to electronic distribution is complete.

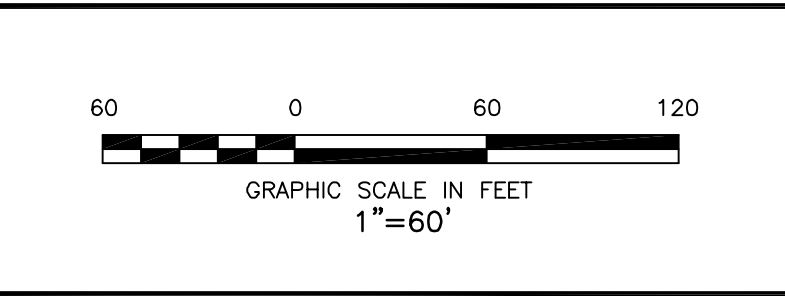
**Note:** Please disregard if you already have signed up and received this fact sheet electronically

User: mscurma 5/15/2009 9:54:55 AM  
DWG: \\sdfie01\p\0603419\Ossining 2009 Supplemental RI Work Plan\F-Figure 1-2 Study Area.dwg OU-1 r-base rev



LEGEND	
	EXISTING SOIL BORING LOCATION
	EXISTING MONITORING WELL LOCATION
	SURVEYED GAUGING LOCATION
	PROPOSED MONITORING WELL LOCATION
	PROPOSED SOIL BORING LOCATION
	SOIL BORING/ MONITORING WELL INSTALLED BY OTHERS
	LOT BOUNDARIES
	SITE BOUNDARIES
	FENCE
	HISTORICAL MGP STRUCTURES
	EXISTING STRUCTURES - APPROXIMATE LOCATION
	OPERABLE UNIT AREA DESIGNATION

—NOTICE—  
THIS DRAWING AND ALL INFORMATION CONTAINED HEREIN IS AUTHORIZED FOR USE ONLY BY THE PARTY FOR WHOM THE WORK WAS CONTRACTED OR TO WHOM IT IS CERTIFIED.  
THIS DRAWING MAY NOT BE COPIED, REUSED, DISCLOSED, DISTRIBUTED OR RELIED UPON FOR ANY OTHER PURPOSE WITHOUT THE WRITTEN CONSENT OF CMX.  
COPYRIGHT 2008 CMX. ALL RIGHTS RESERVED

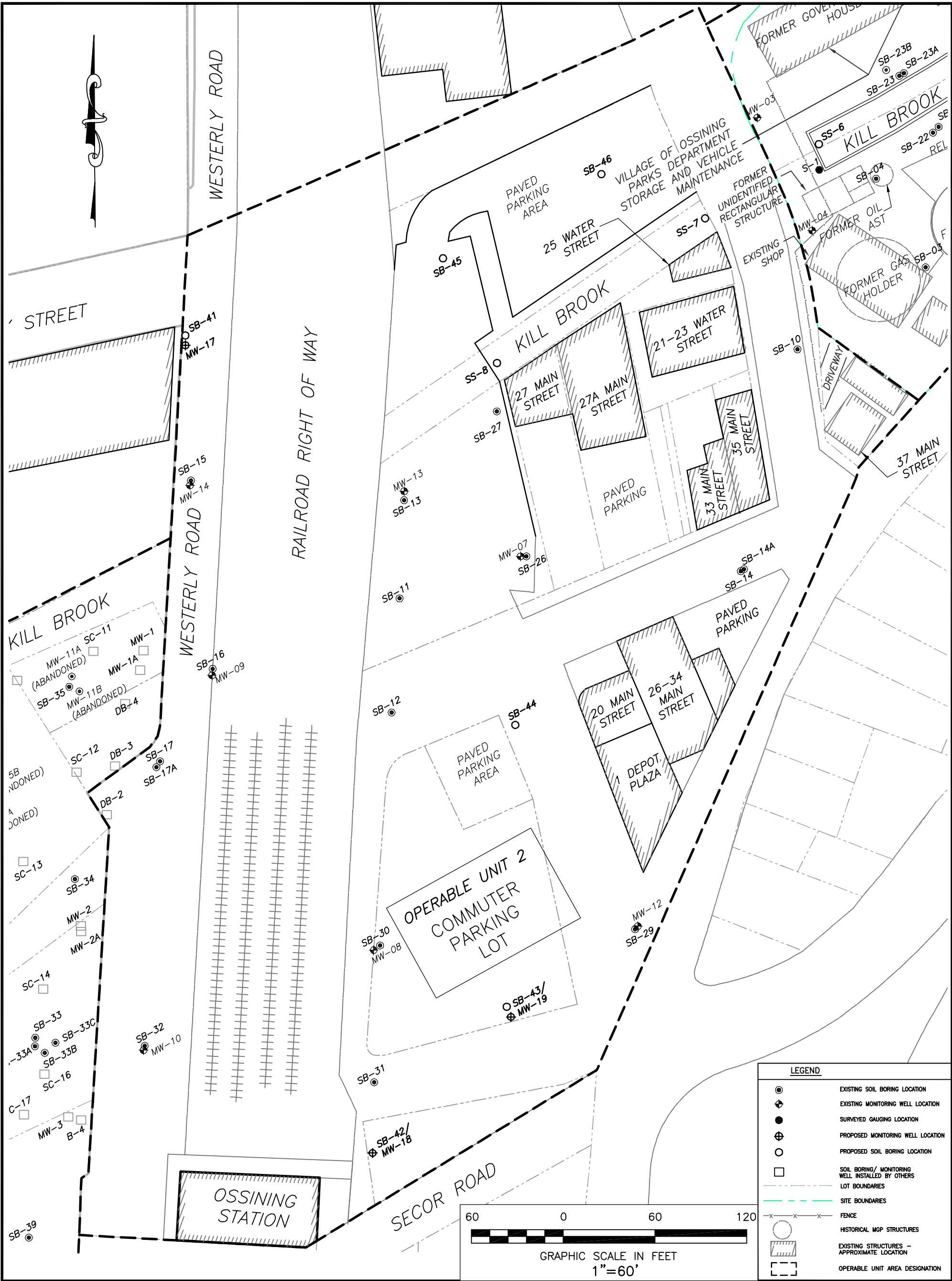


**CMX**  
Cert. Of Authorization 24GA27926200  
200 STATE HIGHWAY NINE  
P.O. BOX 900 MANALAPAN, NJ 07726  
TEL (732)577-9000 FAX (732)577-9888

**FIGURE 2-1 PROPOSED SAMPLE LOCATIONS**  
**OSSINING FORMER GAS WORKS**  
**OPERABLE UNIT 1**  
VILLAGE OF OSSINING, WESTCHESTER COUNTY, NEW JERSEY

PROJECT NO	060341901
SCALE	1" = 60'
DATE	5/15/2009
CHECKED BY	JMS
SHEET NO.	1 of 1





**FIGURE 2-1 PROPOSED SAMPLE LOCATIONS  
OSSINING FORMER GAS WORKS  
OPERABLE UNIT 2**

VILLAGE OF OSSINING WESTCHESTER COUNTY NEW JERSEY

—NOTICE—  
THIS DRAWING AND ALL INFORMATION CONTAINED HEREIN IS AUTHORIZED FOR USE ONLY BY THE PARTY FOR WHOM THE WORK WAS CONTRACTED OR TO WHOM IT IS CERTIFIED. THIS DRAWING MAY NOT BE COPIED, REUSED, DISCLOSED, DISTRIBUTED OR RELIED UPON FOR ANY OTHER PURPOSE WITHOUT THE WRITTEN CONSENT OF CMX.

COPYRIGHT 2008 CMX. ALL RIGHTS RESERVED



Cert. Of Authorization 24GA27926200  
200 STATE HIGHWAY NINE  
P.O. BOX 900 MANALAPAN, NJ 07726  
TEL (732)577-9000 FAX (732)577-9888  
ARIZONA • FLORIDA • MARYLAND • NEVADA • NEW JERSEY  
NEW YORK • PENNSYLVANIA • MEXICO

SCALE 1" = 60'	DATE 5/15/2009	DRAWN BY MVS	DESIGNED BY JMS	PROJECT NO 060341901	CHECKED BY JMS
-------------------	-------------------	-----------------	--------------------	-------------------------	-------------------