

Approved for Engineering Department  
 Peter C. Jacobsen, P.E. Date  
 Engineering Program Manager, Port Commerce

Approved for Port Commerce Department  
 Dennis Lombardi Date  
 Assistant Director, Port Commerce

DESCRIPTION  
 PROPERTY OF THE PORT AUTHORITY OF NEW YORK AND NEW JERSEY  
 SITE 2a  
 TAX LOT No. 1, 300 & P/O 200 BLOCK No. 1400  
 BOROUGH OF STATEN ISLAND, CITY OF NEW YORK

All that certain plot, piece or parcel of land, with the buildings and improvements thereon erected, situate, lying and being in the Borough of Staten Island, County of Richmond, City and State of New York, and bounded and described by the following:

BEGINNING at a point formed by the intersection of the westerly record line of Western Avenue and the southerly record line of Richmond Terrace, said point of BEGINNING having coordinates of South 6,278.781 and West 3,804.870 and running thence from said point the following courses and distances:

1. THENCE South 07° 02' 42" East a distance of 229.00 feet to a point;
2. THENCE South 00° 02' 42" East a distance of 229.00 feet to a point;
3. THENCE North 00° 02' 42" West a distance of 229.00 feet to a point;
4. THENCE North 00° 02' 42" West a distance of 229.00 feet to a point;
5. THENCE North 00° 02' 42" West a distance of 229.00 feet to a point;
6. THENCE North 00° 02' 42" West a distance of 229.00 feet to a point;
7. THENCE North 00° 02' 42" West a distance of 229.00 feet to a point;
8. THENCE North 00° 02' 42" West a distance of 229.00 feet to a point;
9. THENCE North 00° 02' 42" West a distance of 229.00 feet to a point;
10. THENCE North 00° 02' 42" West a distance of 229.00 feet to a point;
11. THENCE North 00° 02' 42" West a distance of 229.00 feet to a point;
12. THENCE North 00° 02' 42" West a distance of 229.00 feet to a point;
13. THENCE North 00° 02' 42" West a distance of 229.00 feet to a point;
14. THENCE North 00° 02' 42" West a distance of 229.00 feet to a point;

The above said Site 2a contains an area of 603,997 square feet (13.87 acres)

DESCRIPTION  
 PROPERTY OF THE PORT AUTHORITY OF NEW YORK AND NEW JERSEY  
 SITE 2b  
 TAX LOT No. 1, 100 & P/O 300 BLOCK No. 1400  
 BOROUGH OF STATEN ISLAND, CITY OF NEW YORK

All that certain plot, piece or parcel of land, with the buildings and improvements thereon erected, situate, lying and being in the Borough of Staten Island, County of Richmond, City and State of New York, and bounded and described by the following:

BEGINNING at a point formed by the intersection of the westerly record line of Western Avenue and the southerly record line of Richmond Terrace, said point of BEGINNING having coordinates of South 6,278.781 and West 3,804.870 and running thence from said point the following courses and distances:

1. THENCE South 07° 02' 42" East a distance of 229.00 feet to a point;
2. THENCE South 00° 02' 42" East a distance of 229.00 feet to a point;
3. THENCE North 00° 02' 42" West a distance of 229.00 feet to a point;
4. THENCE North 00° 02' 42" West a distance of 229.00 feet to a point;
5. THENCE North 00° 02' 42" West a distance of 229.00 feet to a point;
6. THENCE North 00° 02' 42" West a distance of 229.00 feet to a point;
7. THENCE North 00° 02' 42" West a distance of 229.00 feet to a point;
8. THENCE North 00° 02' 42" West a distance of 229.00 feet to a point;
9. THENCE North 00° 02' 42" West a distance of 229.00 feet to a point;
10. THENCE North 00° 02' 42" West a distance of 229.00 feet to a point;
11. THENCE North 00° 02' 42" West a distance of 229.00 feet to a point;
12. THENCE North 00° 02' 42" West a distance of 229.00 feet to a point;
13. THENCE North 00° 02' 42" West a distance of 229.00 feet to a point;
14. THENCE North 00° 02' 42" West a distance of 229.00 feet to a point;

The above said Site 2b contains an area of 1,042,749 square feet (23.94 acres)

DESCRIPTION  
 PROPERTY OF THE PORT AUTHORITY OF NEW YORK AND NEW JERSEY  
 SITE 2c  
 TAX LOT No. 1, BLOCK No. 1338  
 BOROUGH OF STATEN ISLAND, CITY OF NEW YORK

All that certain plot, piece or parcel of land, with the buildings and improvements thereon erected, situate, lying and being in the Borough of Staten Island, County of Richmond, City and State of New York, and bounded and described by the following:

BEGINNING at a point on the easterly record line of Western Avenue, said point being located a distance of 2,436.70 feet south from the intersection of the said easterly record line of Western Avenue and the southerly record line of Richmond Terrace, said point of BEGINNING having coordinates of South 8,257.026 and West 3,804.870 and running thence the following courses and distances:

1. THENCE South 07° 02' 42" East a distance of 229.00 feet to a point;
2. THENCE South 00° 02' 42" East a distance of 229.00 feet to a point;
3. THENCE North 00° 02' 42" West a distance of 229.00 feet to a point;
4. THENCE North 00° 02' 42" West a distance of 229.00 feet to a point;
5. THENCE North 00° 02' 42" West a distance of 229.00 feet to a point;
6. THENCE North 00° 02' 42" West a distance of 229.00 feet to a point;
7. THENCE North 00° 02' 42" West a distance of 229.00 feet to a point;
8. THENCE North 00° 02' 42" West a distance of 229.00 feet to a point;
9. THENCE North 00° 02' 42" West a distance of 229.00 feet to a point;
10. THENCE North 00° 02' 42" West a distance of 229.00 feet to a point;
11. THENCE North 00° 02' 42" West a distance of 229.00 feet to a point;
12. THENCE North 00° 02' 42" West a distance of 229.00 feet to a point;
13. THENCE North 00° 02' 42" West a distance of 229.00 feet to a point;
14. THENCE North 00° 02' 42" West a distance of 229.00 feet to a point;

The above said Site 2c contains an area of 203,009 square feet (4.66 acres)

DESCRIPTION  
 PROPERTY OF THE PORT AUTHORITY OF NEW YORK AND NEW JERSEY  
 SITE 3  
 TAX LOT No. 1, BLOCK No. 1338  
 BOROUGH OF STATEN ISLAND, CITY OF NEW YORK

All that certain plot, piece or parcel of land, with the buildings and improvements thereon erected, situate, lying and being in the Borough of Staten Island, County of Richmond, City and State of New York, and bounded and described by the following:

BEGINNING at a point on the easterly record line of Western Avenue, said point being located a distance of 2,436.70 feet south from the intersection of the said easterly record line of Western Avenue and the southerly record line of Richmond Terrace, said point of BEGINNING having coordinates of South 8,257.026 and West 3,804.870 and running thence the following courses and distances:

1. THENCE South 07° 02' 42" East a distance of 229.00 feet to a point;
2. THENCE South 00° 02' 42" East a distance of 229.00 feet to a point;
3. THENCE North 00° 02' 42" West a distance of 229.00 feet to a point;
4. THENCE North 00° 02' 42" West a distance of 229.00 feet to a point;
5. THENCE North 00° 02' 42" West a distance of 229.00 feet to a point;
6. THENCE North 00° 02' 42" West a distance of 229.00 feet to a point;
7. THENCE North 00° 02' 42" West a distance of 229.00 feet to a point;
8. THENCE North 00° 02' 42" West a distance of 229.00 feet to a point;
9. THENCE North 00° 02' 42" West a distance of 229.00 feet to a point;
10. THENCE North 00° 02' 42" West a distance of 229.00 feet to a point;
11. THENCE North 00° 02' 42" West a distance of 229.00 feet to a point;
12. THENCE North 00° 02' 42" West a distance of 229.00 feet to a point;
13. THENCE North 00° 02' 42" West a distance of 229.00 feet to a point;
14. THENCE North 00° 02' 42" West a distance of 229.00 feet to a point;

The above said Site 3 contains an area of 1,872,190 square feet (42.98 acres)

DESCRIPTION  
 PROPERTY OF THE PORT AUTHORITY OF NEW YORK AND NEW JERSEY  
 SITE 4  
 TAX LOT No. 1, BLOCK No. 1338  
 BOROUGH OF STATEN ISLAND, CITY OF NEW YORK

All that certain plot, piece or parcel of land, with the buildings and improvements thereon erected, situate, lying and being in the Borough of Staten Island, County of Richmond, City and State of New York, and bounded and described by the following:

BEGINNING at a point on the easterly record line of Western Avenue, said point being located a distance of 2,436.70 feet south from the intersection of the said easterly record line of Western Avenue and the southerly record line of Richmond Terrace, said point of BEGINNING having coordinates of South 8,257.026 and West 3,804.870 and running thence the following courses and distances:

1. THENCE South 07° 02' 42" East a distance of 229.00 feet to a point;
2. THENCE South 00° 02' 42" East a distance of 229.00 feet to a point;
3. THENCE North 00° 02' 42" West a distance of 229.00 feet to a point;
4. THENCE North 00° 02' 42" West a distance of 229.00 feet to a point;
5. THENCE North 00° 02' 42" West a distance of 229.00 feet to a point;
6. THENCE North 00° 02' 42" West a distance of 229.00 feet to a point;
7. THENCE North 00° 02' 42" West a distance of 229.00 feet to a point;
8. THENCE North 00° 02' 42" West a distance of 229.00 feet to a point;
9. THENCE North 00° 02' 42" West a distance of 229.00 feet to a point;
10. THENCE North 00° 02' 42" West a distance of 229.00 feet to a point;
11. THENCE North 00° 02' 42" West a distance of 229.00 feet to a point;
12. THENCE North 00° 02' 42" West a distance of 229.00 feet to a point;
13. THENCE North 00° 02' 42" West a distance of 229.00 feet to a point;
14. THENCE North 00° 02' 42" West a distance of 229.00 feet to a point;

The above said Site 4 contains an area of 1,872,190 square feet (42.98 acres)

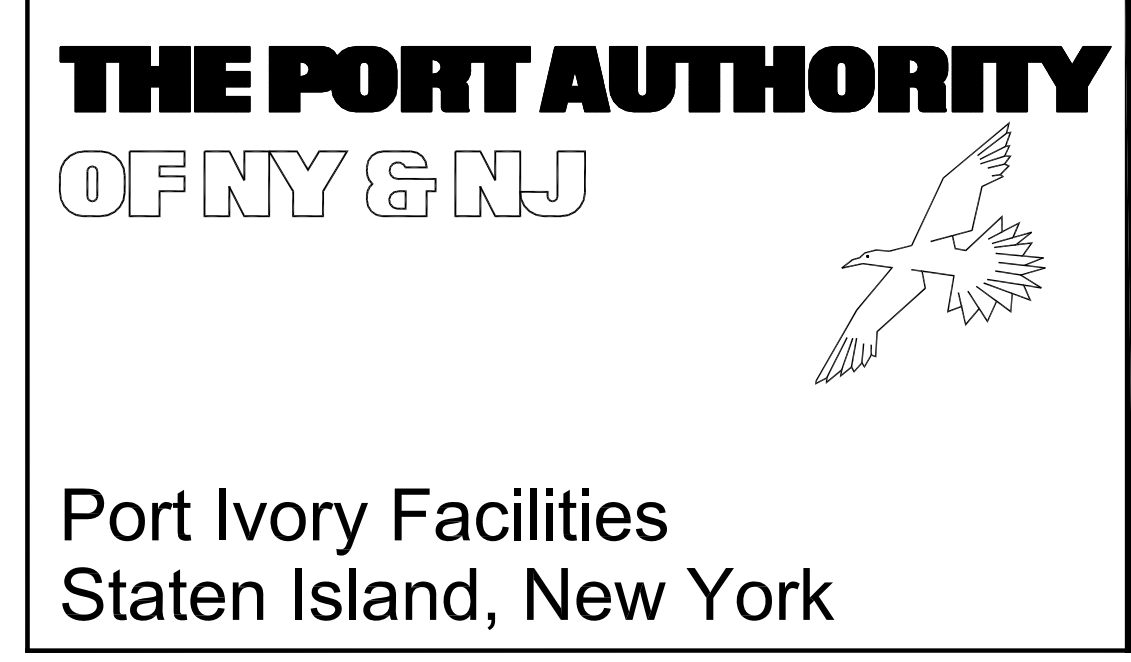
DESCRIPTION  
 PROPERTY OF THE PORT AUTHORITY OF NEW YORK AND NEW JERSEY  
 SITE 5  
 TAX LOT No. 1, BLOCK No. 1338  
 BOROUGH OF STATEN ISLAND, CITY OF NEW YORK

All that certain plot, piece or parcel of land, with the buildings and improvements thereon erected, situate, lying and being in the Borough of Staten Island, County of Richmond, City and State of New York, and bounded and described by the following:

BEGINNING at a point on the easterly record line of Western Avenue, said point being located a distance of 2,436.70 feet south from the intersection of the said easterly record line of Western Avenue and the southerly record line of Richmond Terrace, said point of BEGINNING having coordinates of South 8,257.026 and West 3,804.870 and running thence the following courses and distances:

1. THENCE South 07° 02' 42" East a distance of 229.00 feet to a point;
2. THENCE South 00° 02' 42" East a distance of 229.00 feet to a point;
3. THENCE North 00° 02' 42" West a distance of 229.00 feet to a point;
4. THENCE North 00° 02' 42" West a distance of 229.00 feet to a point;
5. THENCE North 00° 02' 42" West a distance of 229.00 feet to a point;
6. THENCE North 00° 02' 42" West a distance of 229.00 feet to a point;
7. THENCE North 00° 02' 42" West a distance of 229.00 feet to a point;
8. THENCE North 00° 02' 42" West a distance of 229.00 feet to a point;
9. THENCE North 00° 02' 42" West a distance of 229.00 feet to a point;
10. THENCE North 00° 02' 42" West a distance of 229.00 feet to a point;
11. THENCE North 00° 02' 42" West a distance of 229.00 feet to a point;
12. THENCE North 00° 02' 42" West a distance of 229.00 feet to a point;
13. THENCE North 00° 02' 42" West a distance of 229.00 feet to a point;
14. THENCE North 00° 02' 42" West a distance of 229.00 feet to a point;

The above said Site 5 contains an area of 1,872,190 square feet (42.98 acres)

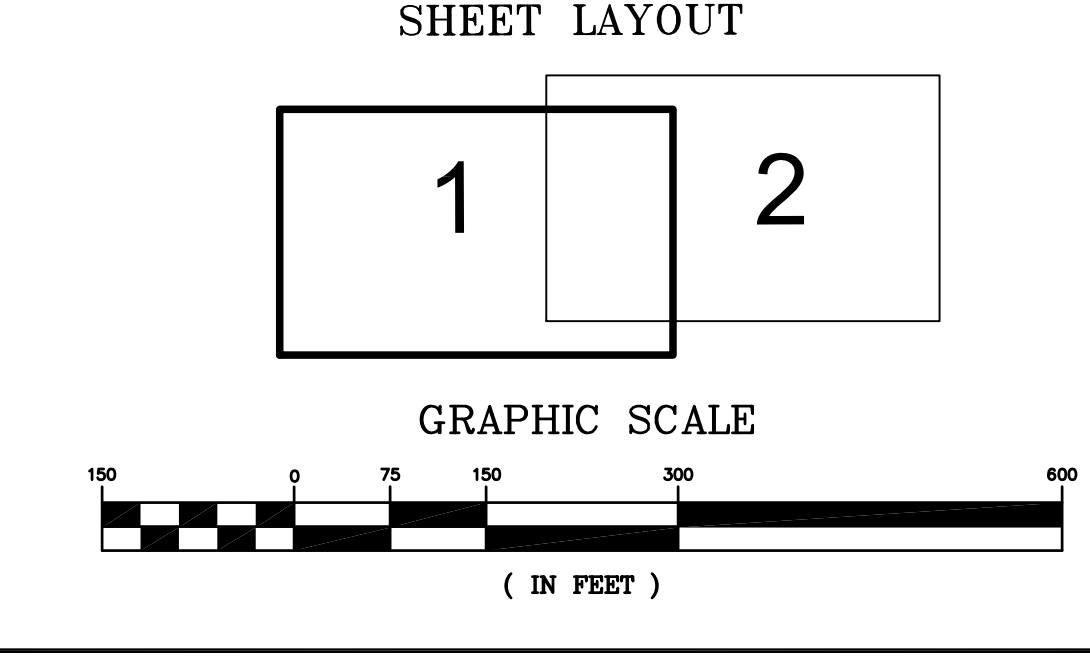


**IMPORTANT NOTE:**  
 THE INFORMATION DEPICTED ON THIS MAP REPRESENTS THE DATES INDICATED AND CAN BE CONSIDERED AS THE GENERAL CONDITIONS EXISTING AT THAT TIME. BE ADVISED THAT ADDITIONAL INFORMATION MAY RESIDE ON DIGITAL FILES AND MAY NOT BE PLOTTED ON THIS MAP.

I hereby certify to The Port Authority of New York and New Jersey and The New York State Department of Environmental Conservation that this map indicates the conditions existing as of the date indicated hereon to the best of my professional knowledge.

William Spiezio, L.S. New York State Lic. # 050106

Figure 2  
 Boundary Survey of Blocks 1309, 1338 and 1400  
 Situate in Borough of Staten Island  
 County of Richmond, City and State of New York  
 Showing Sites 1, 2, 3 & 4 to be Addressed Under  
 NYSDEC's Voluntary Cleanup Program



COORDINATES ARE BASED ON A RECTANGULAR SYSTEM, THE NORTHERLY AXIS OF WHICH IS COINCIDENT WITH THE TRUE MERIDIAN THROUGH THE NATIONAL OCEAN SURVEY STATION "BOGART" ON TODD HILL, STATEN ISLAND AND ITS ORIGIN SO CHOSEN AS TO MAKE "BOGART" SOUTH 20.50' WEST 20.25'.

SITE BOUNDARIES WERE DELINEATED ON THE BASIS OF GEOTECHNICAL DATA AND THE DEVELOPMENT SCHEDULE OF THE INTERMODAL FACILITY AS DETERMINED BY THE PORT AUTHORITY ENGINEERING DEPARTMENT AND PORT COMMERCE DEPARTMENT.

**ROGERS SURVEYING, PLLC**  
 1632 Richmond Terrace, Staten Island, NY 10310  
 (718) 447 7311 Fax (718) 273 3560

This drawing subject to conditions in contract. All inventions, ideas, designs and methods herein are reserved to Port Authority and may not be used without it's written consent.

Date 12/7/00 (REVISED 9/20/03 SITES) Scale 1" = 150'  
 REVISED 12/22/00 LOTS 100, 200, 300 ADDED  
 REVISED 9/20/03 METES & BOUNDS FOR CLEANUP SITES  
 Contract Number Drawing Number



Approved for Engineering Department  
 Peter C. Jacobsen, P.E. Date  
 Engineering Program Manager, Port Commerce

Approved for Port Commerce Department  
 Dennis Lombardi Date  
 Assistant Director, Port Commerce

P.O.B. SITE 4  
 S 6004.668  
 W 38670.305  
 703.40' FROM THE INTERSECTION OF THE PROLONGATION OF  
 THE WESTERLY RECORD LINE OF WESTERN AVENUE AND  
 THE NORTHERLY RECORD LINE OF RICHMOND TERRACE

BLOCK 1309  
 TAX LOT 10  
 SITE 4  
 Area = 1,692,546 sq.ft. 38.86 Acres

DESCRIPTION  
 PROPERTY OF THE PORT AUTHORITY OF NEW YORK AND NEW JERSEY  
 SITE 4  
 TAX LOT 10, BLOCK No. 1309  
 BOROUGH OF STATEN ISLAND, CITY OF NEW YORK

All that certain plot, piece or parcel of land, with the buildings and improvements thereon erected, situate, lying and being in the Borough of Staten Island, County of Richmond, City and State of New York, and bounded and described by the following:

BEGINNING at a point on the northerly record line of Richmond Terrace, said point of BEGINNING having coordinates of South 6204.668 and West 38670.305. Point of BEGINNING is additionally located as being 703.40 feet westerly from the intersection of the prolongation of the westerly record line of Western Avenue and the northerly record line of Richmond Terrace and running thence the following courses:

1. THENCE North 16° 37' 44" East a distance of 446.85 feet to a point;
2. THENCE North 57° 05' 38" West a distance of 663.55 feet to a point;
3. THENCE North 24° 42' 52" West a distance of 434.05 feet to a point on the U.S. Pierhead and Bulkhead Line as Approved by the Secretary of War August 12, 1957;

Thence along the said U.S. Pierhead and Bulkhead Line the following three (3) courses:

4. THENCE North 69° 20' 06" East a distance of 383.52 feet to a point;
5. THENCE North 84° 07' 34" East a distance of 1022.01 feet to a point;
6. THENCE South 85° 45' 39" East a distance of 51.68 feet to a point;
7. THENCE South 03° 40' 17" East a distance of 903.72 feet to a point;
8. THENCE South 16° 47' 17" East a distance of 588.22 feet to a point;
9. THENCE South 07° 52' 50" East a distance of 2.48 feet to a point;
10. THENCE South 72° 30' 30" West a distance of 34.28 feet to a point;
11. THENCE South 08° 30' 05" East a distance of 42.71 feet to a point;
12. THENCE South 85° 39' 10" West a distance of 49.33 feet to a point;
13. THENCE North 06° 47' 10" West a distance of 5.01 feet to a point;
14. THENCE South 84° 29' 46" West a distance of 58.84 feet to a point;
15. THENCE South 07° 47' 00" East a distance of 14.03 feet to a point;
16. THENCE South 81° 45' 00" West a distance of 68.21 feet to a point;
17. THENCE South 06° 15' 34" East a distance of 113.61 feet to a point on the said northerly record line of Richmond Terrace;

Thence along the said northerly record line of Richmond Terrace the following four (4) courses:

18. South 85° 21' 50" West a distance of 411.41 feet to a point;
19. THENCE South 21° 52' 50" West a distance of 1039 feet to a point;
20. THENCE South 82° 22' 16" West a distance of 59.65 feet to a point;
21. THENCE North 57° 05' 59" West a distance of 441.13 feet to a point or place of BEGINNING.

The above said Site 4 contains an area of 1,692,546 square feet (38.86 acres)

**THE PORT AUTHORITY OF NY & NJ**

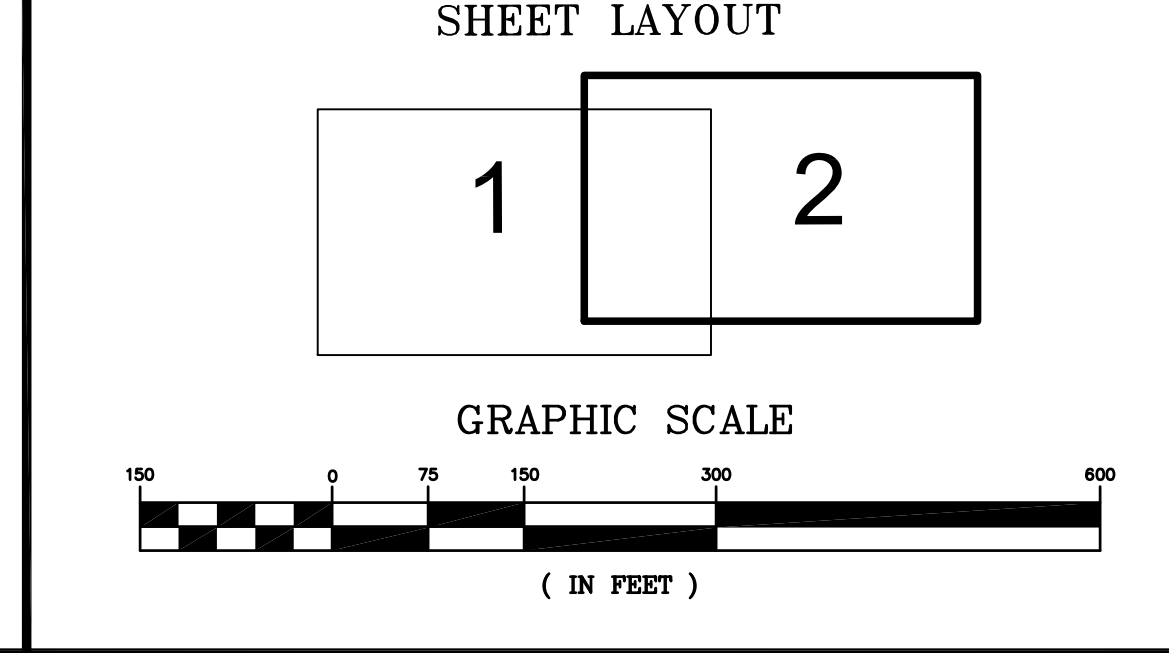
Port Ivory Facilities  
 Staten Island, New York

**IMPORTANT NOTE :**  
 THE INFORMATION DEPICTED ON THIS MAP REPRESENTS THE DATES INDICATED AND CAN BE CONSIDERED AS THE GENERAL CONDITIONS EXISTING AT THAT TIME. BE ADVISED THAT ADDITIONAL INFORMATION MAY RESIDE ON DIGITAL FILES AND MAY NOT BE PLOTTED ON THIS MAP.

I hereby certify to The Port Authority of New York and New Jersey and The New York State Department of Environmental Conservation that this map indicates the conditions existing as of the date indicated hereon to the best of my professional knowledge.

William Spiezio, L.S. New York State Lic. # 050106

Title  
**Boundary Survey of Blocks 1309, 1338 and 1400**  
 Situate in Borough of Staten Island  
 County of Richmond, City and State of New York  
 Showing Sites 1, 2, 3 & 4 to be Addressed Under  
 NYSDEC's Voluntary Cleanup Program



COORDINATES ARE BASED ON A RECTANGULAR SYSTEM, THE NORTHERLY AXIS OF WHICH IS COINCIDENT WITH THE TRUE MERIDIAN THROUGH THE NATIONAL OCEAN SURVEY STATION "BOGART" ON TODD HILL, STATEN ISLAND AND ITS ORIGIN SO CHOSEN AS TO MAKE "BOGART" SOUTH 20.350' WEST 20.250'.

SITE BOUNDARIES WERE DELINEATED ON THE BASIS OF GEOTECHNICAL DATA AND THE DEVELOPMENT SCHEDULE OF THE INTERMODAL FACILITY AS DETERMINED BY THE PORT AUTHORITY ENGINEERING DEPARTMENT AND PORT COMMERCE DEPARTMENT.

**ROGERS SURVEYING, PLLC**  
 1632 Richmond Terrace, Staten Island, NY 10310  
 (718) 447 7311 Fax (718) 273 3560

This drawing subject to conditions in contract. All inventions, ideas, designs and methods herein are reserved to Port Authority and may not be used without it's written consent.

Date 12/7/00 (REVISED 9/20/03 SITES) Scale 1" = 150'  
 REVISED 12/22/00 LOTS 100, 200, 300 ADDED  
 REVISED 9/20/03 METES & BOUNDS FOR CLEANUP SITES  
 Contract Number Drawing Number