

COMMUNITY UPDATES and NOTICE of AVAILABILITY SESSION for BUILDING DEMOLITION

SITE No. 152016 | June 2023 | NYSDEC REGION 1



Building Demolition to Begin at Lawrence Aviation Industries Site

New York State Superfund Program • 100 Sheep Pasture Road, Port Jefferson Station, New York

COMMUNITY AVAILABILITY SESSION

Port Jefferson Village Center,
101 E Broadway,
Port Jefferson, NY 11777
June 29, 2023, 6:00 - 8:30 PM

WHOM TO CONTACT

Comments and questions are
always welcome and should be
directed as follows:

PROJECT-RELATED QUESTIONS:

Payson Long, P.E.
Project Manager
NYSDEC
Remedial Bureau E, Section D
625 Broadway
Albany, New York 12233
(518) 402-9651
Payson.long@dec.ny.gov

PROJECT-RELATED HEALTH QUESTIONS:

Mark Sergott, P.G. NYSDOH
Bureau of Environmental
Exposure Investigation
Empire State Plaza
Corning Tower, Room #1787
Albany, New York 12237
(518) 402-7860
bee@health.ny.gov

FOR INFORMATION ON THE LAWRENCE AVIATION INDUSTRIES REMEDIATION PROGRAM:

[https://www.dec.ny.gov/
chemical/127763.html](https://www.dec.ny.gov/chemical/127763.html)

June 2023 Community Availability Session

The New York State Department of Environmental Conservation (NYSDEC) is committed to a careful and thorough clean-up of the Former Lawrence Aviation Industries (LAI) Site (Site) in Port Jefferson Station, NY, while keeping the surrounding community informed of our actions.

A community availability session is planned to take place at the Port Jefferson Village Center on **Thursday, June 29, between 6:00 PM and 8:30 PM**. Experts from NYSDEC, New York State Department of Health (NYSDOH), NYSDEC-contracted engineering and demolition firms, Suffolk County Landbank Corporation (SCLBC), and the Suffolk County Department of Health Services (SCDHS), will be available for community members to interact with in a one-on-one format. Multiple stations will be set up at the Village Center with representatives available to discuss specific areas of interest. Participants can attend any time during the session.

The community availability session will present information about the planned demolition, cleanup activities, and future use at the LAI Site. Handouts of the presentation materials will be available at the session.

The elimination of possible exposure of Site-related contamination to the local community is the top priority of NYS. This update includes the latest information regarding the planned demolition of Site buildings and provides progress to address contaminated soils and groundwater on the property. We encourage you to sign-up for our LISTSERV to continue receiving updates on these actions and future public information sessions (see page 4 for more info).

Lawrence Aviation Industries Superfund Site

Site History

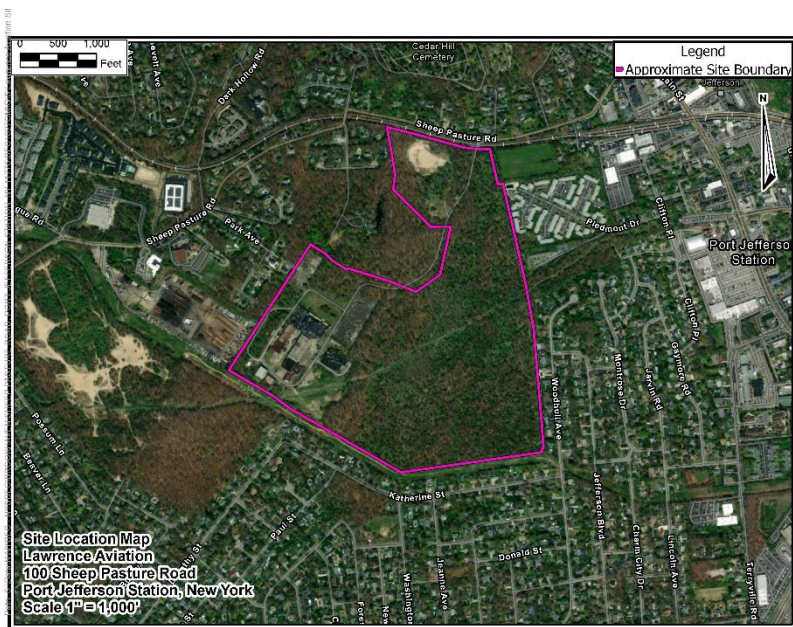
The Site (152016) is located in a commercial section of the unincorporated Hamlet of Port Jefferson Station within the Town of Brookhaven.

The Site is a former industrial manufacturing facility with numerous derelict buildings occupying approximately 36 acres of the industrial portion of the site. The plant is no longer in operation.

Industrial manufacturing operations were performed on the Site by LAI from 1959 until 2003. The company produced titanium sheet metal for use in the aviation industry. The waste generated from manufacturing included fluorides, sludges, caustic acids, and halogenated solvents. Wastes were dumped in several areas on-site including lagoons and cesspools.

COMMUNITY UPDATES and NOTICE of AVAILABILITY SESSION for BUILDING DEMOLITION

SITE No. 152016 | June 2023 | NYSDEC REGION 1



Site Location

Site Investigation and Remediation

Past disposal practices have resulted in a variety of contaminant releases including trichloroethene (TCE), tetrachloroethene (PCE), acid wastes, oils, sludge, metals, and other industrial plant wastes. During the 1970's and 1980's, SCDHS and NYSDEC conducted several visits and investigations at the Site and documented various potential environmental concerns. In 1980 and 1981, SCDHS required LAI to remove numerous drums of waste materials from the Site. The property owner reportedly crushed more than 1,600 drums, allowing their liquid contents to spill onto unprotected soil.

In 1999, based on previous investigations, NYSDEC requested that EPA place the site on the National Priorities List (NPL), and the Site was listed on March 6, 2000. EPA conducted clean-up activities at the site which included the installation of several extraction wells and two groundwater pump and treatment systems. The first treatment system is on the LAI property and the second is located near the Old Mill Pond in the Village of Port Jefferson. After 10 years of operation, EPA turned over operating responsibilities to NYSDEC. The treatment system on the LAI property was turned over to the NYSDEC in September 2020 and the treatment system adjacent to the Old Mill Pond was turned over to NYSDEC September 2021.

Access to the Site is restricted by a fence. Contaminated surface soils were previously excavated and removed from the Site, limiting direct contact with any residual contaminants in soil. The public water supply that serves the area is monitored routinely and treated to remove contaminants before the water is distributed to consumers. Following building demolition, additional source area investigation is planned to identify residual contamination and optimize treatment efforts and bring the Site closer to closure.

Pre-Construction Activities and Schedule

Groundwater and Environmental Services, Inc. (GES), a NYSDEC standby contractor, will subcontract demolition of the fifteen site buildings, razing the buildings to their concrete pads. NYSDEC expects work to commence after securing grants and permits in the summer of 2023, with completion by the end of the year. Presently, GES has issued a Request for Proposals to qualified demolition firms. Selection of the subcontractors is expected to take place in early June. Presently, GES and NYSDEC are producing work plans and health and safety plans, procuring subcontractors, establishing utilities, and performing preliminary tasks to advance the project once the grants and permits are obtained.

COMMUNITY UPDATES and NOTICE of AVAILABILITY SESSION for BUILDING DEMOLITION

SITE No. 152016 | June 2023 | NYSDEC REGION 1



Activities and Schedule

Following demolition, additional site investigation activities will be performed to optimize existing site remediation activities. NYSDEC anticipates that their contractor, HRP Associates, Inc. (HRP), will follow-up demolition activities with an investigation, close subsurface structures, and clean-up residual soil and groundwater contamination on-site. Actions will commence in late Summer 2023 and proceed through Spring 2024. The overall project is expected to be substantially complete (only minor restoration work remaining) by Summer 2024. Remediation activities will continue for several years. The site cleanup activities will also result in improved site safety and security, allowing for a proposed solar farm to be installed in the former footprint of the Site buildings.



Demolition work hours are expected to be from 7 a.m. through 5 p.m. The total number of personnel on-site will vary based on the work being performed and may include representatives from NYSDEC, NYSDOH, SCLBC, SCDHS, GES, HRP, subcontractors, and vendors. HRP is the NYSDEC's engineering consultant and will be conducting full-time oversight of the remedial project. The number of on-site workers is expected to generally range from approximately five (5) to 25 individuals during remediation. Truck traffic will be limited to accommodate the existing Long Island Railroad (LIRR) schedule for the Sheep Pasture Road crossing area. NYSDEC's contractors will provide adequate traffic controls including flagmen and traffic control devices such as cones, signs, and barriers to ensure safe access to and from the project. NYSDEC is coordinating the work with individual property owners to minimize any disruptions to a property owner's routine activities. A detailed project schedule will be developed by GES and will be provided in a subsequent update.



COMMUNITY UPDATES and NOTICE of AVAILABILITY SESSION for BUILDING DEMOLITION

SITE No. 152016 | June 2023 | NYSDEC REGION 1



What will be done during demolition activities to limit exposure and minimize impacts to the surrounding community?

Every effort will be made to minimize dust, odor, and noise during construction activities.

- **Community Air Monitoring Plan** — Air quality monitors will be used on the site perimeter to ensure dust is not migrating outside the work zone. No visible dust emissions from work zone will be permitted. The air monitoring action levels are conservative for triggering work shut down and corrective measures.
- **Engineering Controls During Materials Processing** — Stormwater management and erosion controls are required to prevent runoff from the Site. In addition, construction activities will be staged to manage building materials during demolition, material sorting, and removal for recycling from the Site.
- **Personal Protective Equipment** — On-site workers are specially trained to work near contaminants and will have protective clothing and equipment available to them.
- **Pedestrian Corridor** - The Setauket Greenway Trail will be separated from the work by a chain-link gate system and the presence of a flag person. The adjacent Setauket Greenway Trail will remain open during demolition activities but will be largely obscured from public view by privacy fencing.

WHERE TO FIND INFORMATION



Project documents are at these location(s):

Port Jefferson Free Library
100 Thompson Street Port
Jefferson, NY, 11777
631-473-0022
<https://portjefflibrary.org/>

Region 1
NYSDEC
Headquarters
SUNY at Stony Brook
50 Circle Road
Stony Brook, NY
11790 (631) 444-0200
(Call for an appointment)

Project documents
are also available on
NYSDEC website at: [https://
www.dec.ny.gov/data/
DecDocs/152016/](https://www.dec.ny.gov/data/DecDocs/152016/)

How will construction truck traffic be routed and handled?

Designated traffic routes for construction vehicles will be established and fenced prior to the cleanup and adhered to by the cleanup contractor and any subcontractors (e.g., tractor trailers, dump trucks, etc.). Construction vehicles may, at times, need to reach specific areas during the cleanup. Traffic during these events would be controlled through signage and road flaggers through coordination with the Town of Brookhaven, the Metropolitan Transit Authority (MTA), and the New York State Department of Transportation (NYSDOT). Entrance and exit from the Site will solely be conducted from Sheep Pasture Road.

Planned Future use of the property

The SCLB plans to use the property for a 42-acre solar array, and a proposed Metropolitan Transportation Authority rail yard and rail electrification project. The portion of the MTA rail yard will require a 2,200-foot section rerouting of the Setauket Greenway Trail. The remaining 42-acres will be preserved as open space.

LISTSERV: SIGN-UP TO STAY INFORMED

<https://www.dec.ny.gov/chemical/61092.html>