

Building Demolition to Begin at Lawrence Aviation Industries Site

New York State Superfund Program • 100 Sheep Pasture Road, Port Jefferson Station, New York

COMMUNITY AVAILABILITY SESSION

Port Jefferson Village Center
101 East Broadway
Port Jefferson, NY 11777

Oct. 4, 6 - 8 p.m.

CONTACT

Comments and questions are always welcome and should be directed as follows:

PROJECT-RELATED QUESTIONS:

Payson Long, P.E.
Project Manager,
NYSDEC
Remedial Bureau E, Section D
625 Broadway
Albany, NY 12233
(518) 402-9651
Payson.Long@dec.ny.gov

HEALTH-RELATED QUESTIONS:

Mark Sergott, P.G. NYSDOH
Bureau of Environmental
Exposure Investigation
Empire State Plaza
Corning Tower, Room #1787
Albany, NY 12237
(518) 402-7860
beei@health.ny.gov

FOR INFORMATION ON THE LAWRENCE AVIATION INDUSTRIES REMEDIATION PROGRAM:

<https://www.dec.ny.gov/chemical/127763.html>

The New York State Department of Environmental Conservation (DEC), in coordination with the State Department of Health (DOH), is implementing a comprehensive cleanup of the former Lawrence Aviation Industries Site in Port Jefferson Station, Suffolk County. DEC is conducting the cleanup through the State Superfund Program. When complete, the cleanup will ensure the site is fully protective of public health and the environment.

DEC's top priority is eliminating the community's potential exposure to any site-related contamination. This update includes the latest information about actions to address contamination, including planned demolition of site buildings and progress to address contaminated soils and groundwater on the property. The update also includes details about a community availability session planned for Oct. 4 to provide an opportunity to continue informing the community throughout the cleanup process. DEC encourages signing up for the DEC LISTSERV to receive email updates on these actions and future public information sessions (see page 4 for more information).

Oct. 4, 2023: Community Availability Session

DEC is holding a community availability session to provide information about upcoming site activities on Wednesday, Oct. 4, between 6 and 8 p.m. at the Port Jefferson Village Center. At the session, experts from DEC, DOH, DEC-contracted engineering and demolition firms, and the Suffolk County Landbank Corporation (SCLBC) will be available to discuss the project and answer questions in a one-on-one format. The session will include information about the planned demolition, cleanup activities, and future use of the LAI site. Participants may attend any time during the two-hour session, which will not include a formal presentation. Learn more about availability sessions, including a video, on DEC's website at: <https://www.dec.ny.gov/public/51805.html>

Lawrence Aviation Industries Superfund Site

Site History

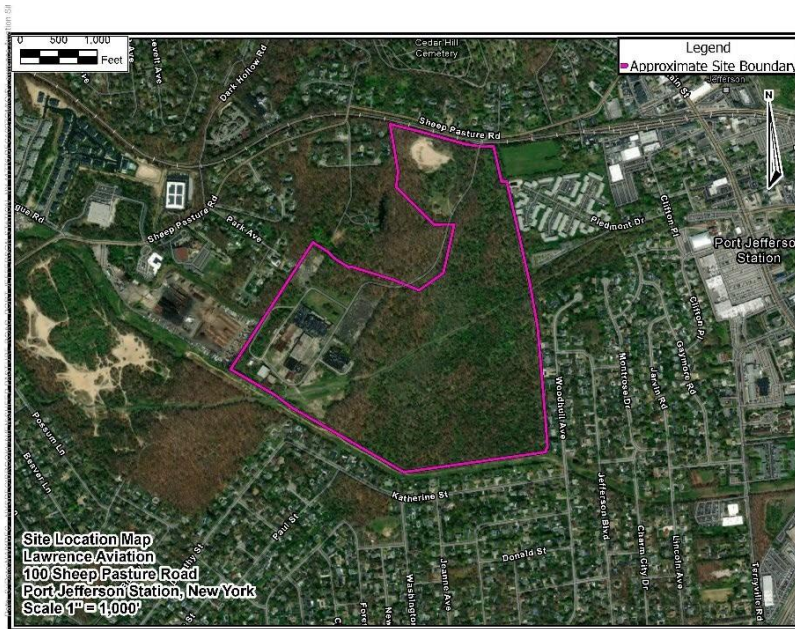
The Lawrence Aviation Industries (LAI) Superfund Site is located in a commercial section of Port Jefferson Station in the town of Brookhaven. It is a former industrial manufacturing facility with numerous derelict buildings that occupy an approximately 36-acre industrial portion of the 126-acre project site. The plant is no longer in operation.

The company produced titanium sheet metal for use in the aviation industry from 1959 until 2003. The waste generated from manufacturing included fluorides, sludges, caustic acids, and halogenated solvents. Wastes were dumped in several areas on-site including lagoons and cesspools.

COMMUNITY UPDATE

NOTICE of AVAILABILITY SESSION

SITE No. 152016 | September 2023 | NYSDEC REGION 1



Site Location

Site Investigation and Remediation

Past disposal practices at the facility resulted in a variety of contaminants released at the site, including trichloroethene (TCE), tetrachloroethene (PCE), acid wastes, oils, sludge, metals, and other industrial plant wastes. During the 1970s and 1980s, the Suffolk County Department of Health Services (SCDHS) and DEC conducted several site visits and investigations, documenting potential environmental concerns. In 1980 and 1981, SCDHS required LAI to remove drums of waste materials from the site.

In 1999, based on previous investigations, DEC requested the U.S. Environmental Protection Agency (EPA) place the site on the National Priorities List, and the site was included on March 6, 2000. EPA conducted cleanup activities at the site, including the installation of NUMBER extraction wells and two groundwater pump-and-treatment systems. The first treatment system is on LAI property and the second is located near the Old Mill Pond in the village of Port Jefferson.

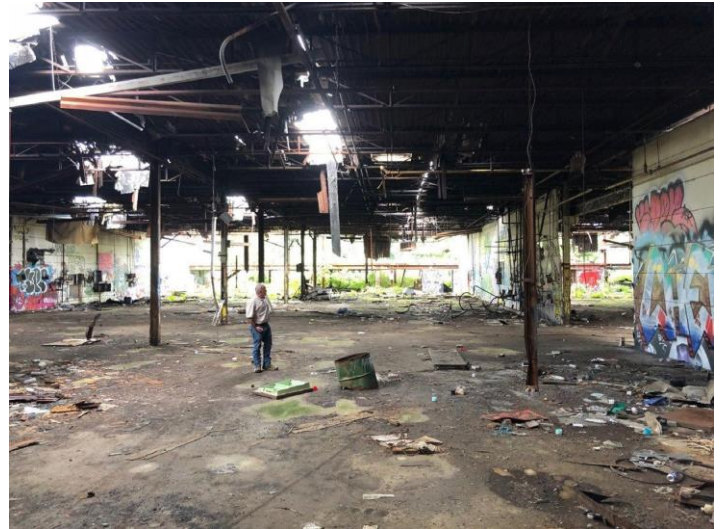
In addition, contaminated surface soils were excavated and removed from the site, limiting direct contact with any residual contaminants in soil. EPA turned over operating responsibilities to DEC for the treatment system on the LAI property in September 2020, and the treatment system adjacent to the Old Mill Pond was turned over to DEC in September 2021. Currently, access to the site is restricted by a fence. The public water supply that serves the area is closely monitored and if any exceedance of the State's stringent drinking water standards is detected, water is treated to effectively remove contaminants before the water is distributed to consumers. Following building demolition, DEC will undertake an additional investigation to identify any residual contamination and optimize treatment efforts to bring the site closer to closure.

Pre-Construction Activities and Schedule

DEC's contractor will implement the demolition of the 15 site buildings, razing structures to their concrete pads. DEC expects demolition work to commence after securing grants and permits this fall, with completion in early 2024. DEC is working with its contractor to develop work plans and health and safety plans to protect on-site workers and prevent any off-site impacts in the community and is working to immediately advance the project once the grants and permits are obtained.

Activities and Schedule

Following demolition, DEC will undertake additional site investigation activities to optimize the cleanup. DEC will follow up demolition activities with an investigation, closure of subsurface structures, and cleanup of residual soil and groundwater contamination on site. Actions will commence this year and continue through early summer 2024. Currently, DEC anticipates project work will be substantially complete by summer 2024, with only minor restoration work remaining.. Cleanup activities will continue for several years. The site cleanup activities will also result in improved site safety and security, allowing for the installation of a proposed solar farm (details on page 4) in the former footprint of the site buildings.



Internal Building Conditions

Demolition work will be undertaken during typical workday hours, from 7 a.m. to 5 p.m. The total number of personnel on site will vary based on work being performed and may include representatives from DEC, DOH, SCLBC, SCDHS, and DEC’s contractors, subcontractors, and vendors. The number of on-site workers will range from approximately five to 25 individuals during remediation. Truck traffic will be limited to accommodate the existing Long Island Railroad (LIRR) schedule for the Sheep Pasture Road crossing area. DEC’s contractors will provide adequate traffic controls including flagmen and traffic control devices such as cones, signs, and barriers to ensure safe access to and from the project. DEC is coordinating the work with individual property owners to minimize any disruptions to neighboring residents and businesses and a detailed project schedule will be provided soon.



What will be done during demolition activities to minimize impacts to the surrounding community?

Every effort will be made to minimize dust, odor, and noise during construction activities.

- **Community Air Monitoring Plan:** Air quality monitors will be used on the site perimeter to ensure dust does not migrate outside the work zone. No visible dust emissions from the work zone will be permitted. The air monitoring action levels are conservative for triggering work shut down and corrective measures.
- **Engineering Controls During Materials Processing:** Stormwater management and erosion controls are required to prevent runoff from the site. In addition, construction activities will be staged to manage building materials during demolition, material sorting, and removal for recycling from the site.
- **Personal Protective Equipment:** On-site workers are specially trained to work near contaminants and will have protective clothing and equipment available to them.
- **Pedestrian Corridor:** The Setauket Greenway Trail will be separated from the work by a chain-link gate system and the presence of a flag person. The adjacent Setauket Greenway Trail will remain open during demolition activities, but the work will be largely obscured from public view by privacy fencing.

WHERE TO FIND INFORMATION



Project documents are at these location(s):

Port Jefferson Free Library
100 Thompson Street Port
Jefferson, NY, 11777
(631) 473-0022
<https://portjefflibrary.org/>

Region 1
NYSDEC
Headquarters
SUNY at Stony Brook 50
Circle Road Stony
Brook, NY 11790
(631) 444-0200
(Call for an appointment)

Project documents are also available on NYSDEC website at:
<https://www.dec.ny.gov/data/DecDocs/152016/>

How will construction truck traffic be routed and handled?

The contractor will establish and fence designated traffic routes for construction vehicles prior to the cleanup and adhered to by the cleanup contractor and any subcontractors (e.g., tractor trailers, dump trucks, etc.). Construction vehicles may, at times, need to reach specific areas during the cleanup. Traffic during these events will be controlled through signage and road flaggers through coordination with the town of Brookhaven, Metropolitan Transit Authority (MTA), and the New York State Department of Transportation (NYSDOT). Entrance and exit from the site will solely be conducted from Sheep Pasture Road.

Planned Future Use of the Property

The Suffolk County Land Bank plans to use the property for a 36-acre solar array, in addition to a proposed Metropolitan Transportation Authority railroad use, including a possible railyard and rail electrification project, that may require the rerouting of a 2,200-foot section of the Setauket Greenway Trail. Approximately 42-acres will be preserved as open space. For more information about proposed future uses, please contact Matt Kapell, Executive Director, (631) 853-3127; matthew.kapell@suffolkcountyny.gov

LISTSERV: SIGN-UP TO STAY INFORMED

<https://www.dec.ny.gov/chemical/61092.html>