



FACT SHEET

State Superfund Program

Receive Site Fact Sheets by *Email*. See "For More Information" to Learn How.

Site Name: Saranac Lake Gas Co. Inc.
DEC Site #: 516008 Operable Unit 03 Pontiac Bay
Address: Saranac Lake, NY 12983

Have questions?
See
"Who to Contact"
Below

Remedy Proposed for State Superfund Site; Public Comment Period and Public Meeting Announced

Public Meeting, Wednesday, 3/11/2015 at 7:00 PM

Harriestown Town Hall 39 Main Street Saranac Lake, NY 12983

NYSDEC invites you to a public meeting to discuss the remedy proposed for the site. You are encouraged to provide comments at the meeting, and during the 30-day comment period described in this fact sheet.

The public is invited to comment on a remedy proposed by the New York State Department of Environmental Conservation (NYSDEC) related to Pontiac Bay (OU03), Saranac Lake, Essex County. Please see the map for the site location.

Documents related to the cleanup of this site can be found at the location(s) identified below under "Where to Find Information."

How to Comment

NYSDEC is accepting written comments about the proposed plan for 30 days, from **February 20, 2015** through **March 22, 2015**. The proposed plan is available for review at the location(s) identified below under "Where to Find Information." Please submit comments to the NYSDEC project manager listed under Project Related Questions in the "Who to Contact" area below.

The site is listed as a Class "2" site in the State Registry of Inactive Hazardous Waste Sites (list of State Superfund sites). A Class 2 site represents a significant threat to public health or the environment; action is required.

Proposed Remedial Action Plan

The remedy proposed for the site includes:

1. Remedial Design

Implementation of a remedial design program to provide the details necessary for the construction, operation, optimization, maintenance, and monitoring of the remedial program. Implementation of Green remediation principles and techniques to the extent feasible in the design, implementation, and site management of the remedy as per DER-31. The major green remediation components are

*Operable Unit: An administrative term used to identify a portion of a site that can be addressed by a distinct investigation and/or cleanup approach. An operable unit can receive specific investigation, and a particular remedy may be proposed.

as follows;

- Considering the environmental impacts of treatment technologies and remedy stewardship over the long term;
- Reducing direct and indirect greenhouse gases and other emissions;
- Increasing energy efficiency and minimizing use of non-renewable energy;
- Conserving and efficiently managing resources and materials;
- Reducing waste, increasing recycling and increasing reuse of materials which would otherwise be considered a waste;
- Maximizing habitat value and creating habitat when possible;
- Fostering green and healthy communities and working landscapes which balance ecological, economic and social goals; and
- Integrating the remedy with the end use where possible and encouraging green and sustainable re-development.

2. An area approximately 76,000 square feet in extent within Pontiac Bay containing MGP-related contamination exceeding Class A sediment guidance values will be excavated to an anticipated depth of seven feet. An estimated 16,900 cubic yards of sediment will be removed. This area of the bay will be isolated and dewatered to allow the use of an excavator to mechanically remove the MGP-impacted sediment. Following the excavation of visually contaminated sediment, over-excavation will ensure that there are no deeper lenses of MGP waste. Confirmatory samples will be taken to ensure that the remedial objectives have been met prior to backfilling. The areas excavated will be backfilled with material meeting Class A sediment guidance values, comprised of sand in the subsurface and suitable habitat substrate in the top two feet.

The excavated sediments may require dewatering and pre-treatment prior to transport. This will be conducted in the upland areas adjacent to the bay prior to offsite disposal. The decanted water will be collected and treated as necessary prior to discharge.

3. The excavated area and any adjacent area disturbed during remediation will be restored, to the extent feasible, using a Department-approved Wetland Restoration Plan. This will include monitoring of the restoration to assure success of the restoration.

Summary of the Investigation

The investigation completed in January 2015 determined the nature and extent of MGP related contamination in soils, groundwater, and sediments at the Site (OU01), in and along Brandy Brook (OU02), and in Pontiac Bay and Lake Flower (OU03). Extensive MGP related contamination was identified at all three locations.

NYSDEC developed the proposed remedy after reviewing the detailed investigation of the site and evaluating the remedial options in the "feasibility study" submitted under New York's State Superfund Program.

Next Steps

NYSDEC will consider public comments as it finalizes the remedy for the site. The selected remedy will be described in a document called a "Record of Decision" that will explain why the remedy was selected and respond to public comments. A detailed design of the selected remedy

will then be prepared, and the cleanup will be performed.

NYSDEC will keep the public informed throughout the investigation and cleanup of the site.

Background

Location: The Saranac Lake Gas Company site, a former manufactured gas plant (MGP) facility, is located in a residential setting on Payeville Road in the Village of Saranac Lake, Essex County. The site is approximately 4.5 acres in size and lies east of and adjacent to the Adirondack Scenic Railroad. Residential properties border the site to the north and east, and a college recreational facility and playing field borders to the south.

Site Features: Currently the main site feature is a fenced storage yard and small building. The manufactured gas plant was predominantly located within the fenced area. Other site features include Brandy Brook, a wooded area, and an access road on the northern portions of the property and woods and equipment storage on the southern portions.

Current zoning/use: The site is zoned commercial and is currently unoccupied.

Past Use of the Site: From the late 1800s to approximately the 1940s, the site was used for manufacturing lighting gas via coal gasification for the Village of Saranac Lake. The operations consisted of two gas holders, a purifier, retort operations, along with coal storage areas and offices. No original structures exist on site today with the exception of a raised concrete storage pad and concrete foundation for one of the gas holders. The past activities at the site have resulted in contamination, both on and off-site.

Operable Units (OU): The site has been separated into three OUs. An operable unit represents a portion of a remedial program for a site that for technical or administrative reasons can be addressed separately to investigate, eliminate or mitigate a release, threat of release or exposure pathway resulting from the site contamination. The operable units are the former gasification plant property (OU01), Brandy Brook running from the site to Pontiac Bay of Lake Flower (OU02), and Pontiac Bay/Lake Flower (OU03). OU02 and OU03 are considered offsite areas.

Site Geology and Hydrogeology: Surficial geology at the Site is predominantly medium to fine sands with some silt. Borings were conducted to as much as 56 feet below ground surface and bedrock was not encountered. Groundwater is very shallow at the site (less than 5 feet) and generally flows to the south; a small brook (Brandy Brook) runs through the northern portions the site. Brandy Brook discharges into Lake Flower approximately 2,000 feet downstream of the site. Sediments in Brandy Brook and Lake Flower are a silty-fine sand, fine sandy silt with traces of clay and gravel.

Additional site details, including environmental and health assessment summaries, are available on NYSDEC's website at:

<http://www.dec.ny.gov/cfm/external/derexternal/haz/details.cfm?pageid=3&progno=516008>

State Superfund Program: New York's State Superfund Program (SSF) identifies and characterizes suspected inactive hazardous waste disposal sites. Sites that pose a significant threat to public health and/or the environment go through a process of investigation, evaluation, cleanup and monitoring.

NYSDEC attempts to identify parties responsible for site contamination and require cleanup before committing State funds.

For more information about the SSF, visit: <http://www.dec.ny.gov/chemical/8439.html>

FOR MORE INFORMATION

Where to Find Information

Project documents are available at the following location(s) to help the public stay informed.

NYSDEC Region 5
Attn: Michael P. McLean
2986 Route 86
Ray Brook, NY 12977
phone: 518-897-1243
(mike.mclean@dec.gov.ny)

Saranac Lake Free Library
100 Main Street
Saranac Lake, NY 12983
phone: 518-891-4190

Who to Contact

Comments and questions are always welcome and should be directed as follows:

Project Related Questions

Michael Mclean
Department of Environmental Conservation
Division of Environmental Remediation
1115 State Route 86 PO Box 296
Ray Brook, NY 12977-0296
518-897-1254
mike.mclean@dec.ny.gov

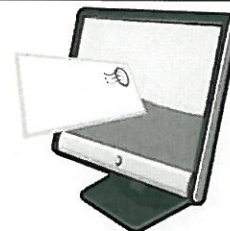
Site-Related Health Questions

Brad Wenskoski
New York State Department of Health
Bureau of Environmental Exposure Investigation
Empire State Plaza, Corning Tower, Room 1787
Albany, NY 12237
(518) 402-7860
BEEI@health.ny.gov

We encourage you to share this fact sheet with neighbors and tenants, and/or post this fact sheet in a prominent area of your building for others to see.

Receive Site Fact Sheets by Email

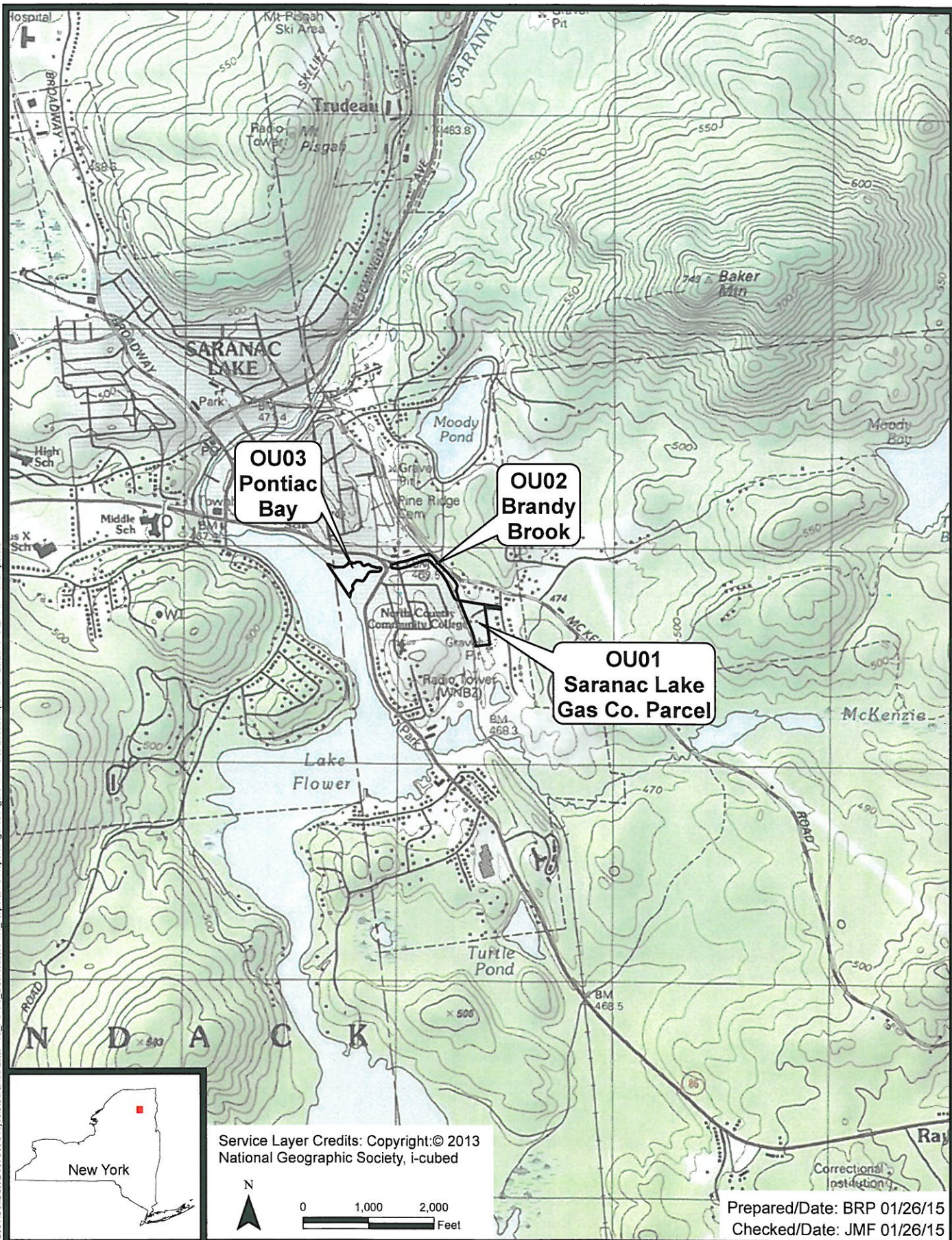
Have site information such as this fact sheet sent right to your email inbox. NYSDEC invites you to sign up with one or more contaminated sites county email listservs available at the following web page:
<http://www.dec.ny.gov/chemical/61092.html>. It's quick, it's free, and it will help keep you *better informed*.



As a listserv member, you will periodically receive site-related information/announcements for all contaminated sites in the county(ies) you select.

Note: Please disregard if you already have signed up and received this fact sheet electronically.

Document: P:\Projects\invsdec1\Contract D007619\Projects\Saranac Lake - RI_FSA_0_Deliverables\4.5_Databases\GIS\MapDocuments\Phase II RI\SiteLocation_OU123.mxd
PDF: P:\Projects\invsdec1\Contract D007619\Projects\Saranac Lake - RI_FSA_0_Deliverables\4.1_Reports\RI Report\Figures\Figure 1.1 - Site Location.pdf 01/26/2015 3:27 PM brian.peters



Service Layer Credits: Copyright:© 2013
National Geographic Society, i-cubed

N

0 1,000 2,000
Feet

Prepared/Date: BRP 01/26/15
Checked/Date: JMF 01/26/15

NYSDEC Site # 516008
Saranac Lake Gas Co., Inc.
Saranac Lake, New York



Site Location Map
Project 3612132271 Figure 1