



## PUBLIC NOTICE

## State Superfund Program

Receive Site Information by Email. See next page to Learn How.

**Site Name:** Niagara Sanitation Company  
**Site No.:** 932054      **Tax Map No.:** 163.00-3-19  
**Site Location:** Nash Road, Town of Wheatfield, 14120

**December 21, 2015**

### Inactive Hazardous Waste Disposal Site Classification Notice

The Inactive Hazardous Waste Disposal Site Program (the State Superfund Program) is the State's program for identifying, investigating, and cleaning up sites where the disposal of hazardous waste may present a threat to public health and/or the environment. The New York State Department of Environmental Conservation (DEC) maintains a list of these sites in the Registry of Inactive Hazardous Waste Disposal Sites (Registry). As of the date of this notice, the site identified above, and located on a map on the reverse side of this page, was reclassified on the Registry as a Class 2 site that presents a significant threat to public health and/or the environment for the following reason(s):

The site is a former municipal and industrial landfill that accepted waste from multiple sites, including Niagara Falls Air Force Base, Bell Aerospace, Carborundum, Frontier Chemical, Graphite Specialties, Continental Can, and Grief Brothers. Site contaminants include metals, polycyclic aromatic hydrocarbons, polychlorinated biphenyls, pesticides, caustics, and plating tank sludge. The landfill does not have a Part 360 cap or access restrictions. Both conditions indicate a concern for potential exposures to people who enter the site. This exposure concern has been documented as people are using the landfill as a jogging and play area. Dirt bike trails are evident throughout the site and use of such has resulted in landfill materials to become exposed at the surface. Therefore, the site represents a significant threat to the environment and public health.

**If you own property adjacent to this site and are renting or leasing your property to someone else, please share this information with them. If you no longer wish to be on the contact list for this site or otherwise need to correct our records, please contact DEC's Project Manager listed below.**

#### FOR MORE SITE INFORMATION

Additional information about this site can be found using DEC's "Environmental Site Remediation Database Search" engine which is located on the internet at:

[www.dec.ny.gov/cfm/externalapps/derexternal/index.cfm?pageid=3](http://www.dec.ny.gov/cfm/externalapps/derexternal/index.cfm?pageid=3)

Comments and questions are always welcome and should be directed as follows:

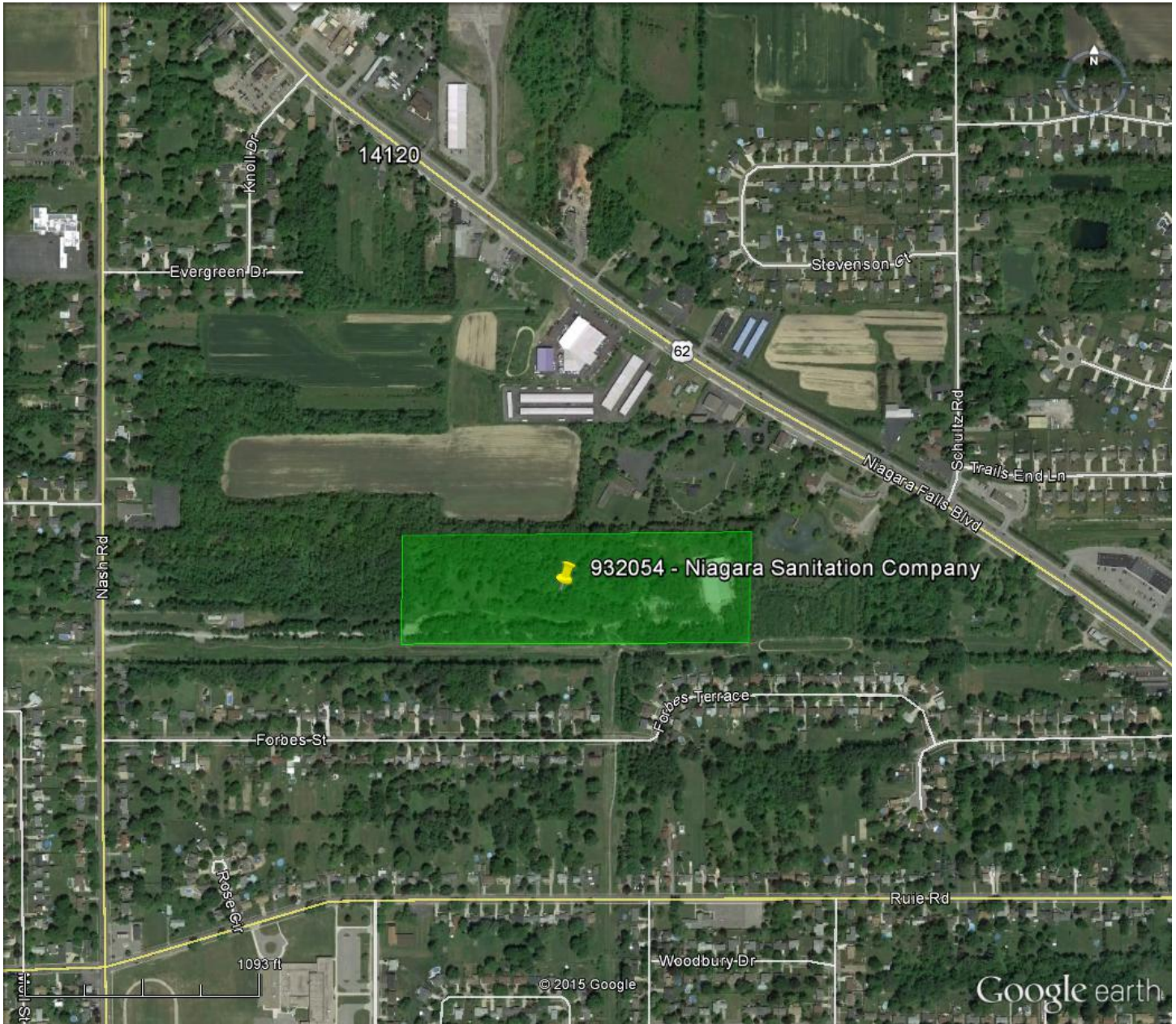
#### Project Related Questions

Glenn May, Project Manager  
NYS Department of Environmental Conservation  
Division of Environmental Remediation  
270 Michigan Ave.  
Buffalo, NY 14203  
Phone: 716-851-7220  
Email: [glenn.may@dec.ny.gov](mailto:glenn.may@dec.ny.gov)

#### Site Related Health Questions

Matthew Forcucci, DOH Project Manager  
NYS Department of Health  
584 Delaware Ave.  
Buffalo, NY 14202  
Phone: 716-847-4501  
Email: [bee@health.ny.gov](mailto:bee@health.ny.gov)

**Approximate Site Location**  
Niagara Sanitation Company  
Site ID: 932054  
Nash Road, Town of Wheatfield  
Niagara County, 14120



**Receive Site Updates by Email**

Have site information such as this public notice sent right to your email inbox. DEC invites you to sign up with one or more contaminated sites county email listservs available at the following web page:

[www.dec.ny.gov/chemical/61092.html](http://www.dec.ny.gov/chemical/61092.html) . It's *quick*, it's *free*, and it will help keep you *better informed*.



As a listserv member, you will periodically receive site-related information/announcements for all contaminated sites in the county(ies) you select.

You may continue also to receive paper copies of site information for a time after you sign up with a county listserv, until the transition to electronic distribution is complete.

**Note:** Please disregard if you received this notice by way of a county email listserv.