

# COMMUNITY AVAILABILITY SESSION

## SEPT. 19, 7-9 P.M.



Department of  
Environmental  
Conservation

AUGUST 2024

## Gowanus Canal Area-Wide Soil Vapor Intrusion Investigation

The New York State Department of Environmental Conservation (DEC) is working closely with the State Department of Health (DOH) to protect public health and the environment. In Brooklyn, DEC and DOH are partnering with the U.S. Environmental Protection Agency (EPA) to undertake the comprehensive investigation and cleanup of former industrial sites near the Gowanus Canal. New York State is committed to keeping the community informed about ongoing cleanup actions and efforts to address legacy contamination in the Gowanus neighborhood.

### COMMUNITY AVAILABILITY SESSION

Thursday, September 19, 7-9 p.m.  
P.S. 372 – The Children’s School  
Gymnasium – 215 1<sup>st</sup> Street

Join DEC and DOH to learn about the Gowanus Canal Area Wide Soil Vapor Intrusion Investigation.

For more on State availability sessions, go to [https://www.youtube.com/watch?v=5XomDsUkc\\_k](https://www.youtube.com/watch?v=5XomDsUkc_k)

DEC will release a summary report of the Gowanus Canal Area Wide 2023/2024 heating season sampling prior to the community availability session held on September 19, 2024.

At the session, DEC and DOH will present a summary of the 2023/2024 heating season sampling, as well as upcoming activities for the 2024/2025 heating season. In addition, staff will be available after the presentation to discuss individual results and other details of the State’s ongoing investigation to assess legacy contamination affecting indoor air quality in some buildings in the Gowanus Canal Area.

New York State’s Gowanus area-wide soil vapor intrusion (SVI) investigation is a comprehensive study to assess the potential for SVI from contamination at various brownfield cleanup sites in the Gowanus area. SVI is a process by which chemicals underground can enter the indoor air of a building through the basement, crawlspace, or slab.

A map on page 3 delineates the SVI study area. DEC will seek access to additional properties in the study area as part of this SVI investigation this fall, with the goal of conducting the round of soil vapor testing starting in November during the 2024-2025 heating season.

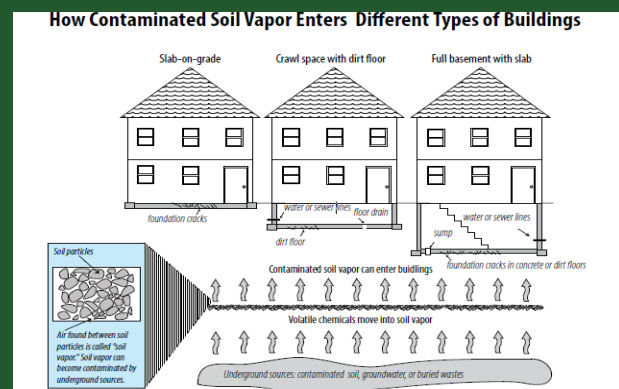
### Contact DEC for Soil Vapor Intrusion Sampling

If you are a property owner in the Gowanus Canal Area who has not yet responded to New York State’s offer for indoor air sampling and are interested, property owners can contact DEC Project Manager Aaron Fischer [aaron.fischer@dec.ny.gov](mailto:aaron.fischer@dec.ny.gov); (518) 402-9805.

Additionally, if you are a tenant in a building in the Gowanus Canal area wide soil vapor intrusion area and would like to request sampling, contact your landlord/property owner to request that the property owner comply with the State’s sampling requests. DEC and DOH will work with the owners of properties in the area and conduct additional investigations as appropriate.

### What is Soil Vapor Intrusion (SVI)?

Soil vapor intrusion is a process by which chemicals in the ground can enter the indoor air of a building through the basement, crawlspace, or slab, as depicted in the graphic below. New York State requires comprehensive evaluations of indoor air quality whenever these contaminants are detected at a Brownfield Cleanup Program (BCP) site.



# COMMUNITY AVAILABILITY SESSION

## SEPT. 19, 7-9 P.M.



Department of  
Environmental  
Conservation

AUGUST 2024

## Gowanus Canal Area-Wide Soil Vapor Intrusion Investigation

### LISTSERV: SIGN UP TO STAY INFORMED



<https://www.dec.ny.gov/chemical/61092.html>

#### Receive Site Fact Sheets by Email

Have site information such as this community update and fact sheet sent right to your email inbox. DEC invites you to sign up with one or more contaminated site email listservs at:

[www.dec.ny.gov/chemical/61092.html](http://www.dec.ny.gov/chemical/61092.html)

It's quick, it's free, and it's easy! As a listserv member, you will periodically receive site-related information and announcements for all contaminated sites in the county(ies) you select.

For more information on New York's environmental investigation and cleanup actions in the Gowanus Canal area, visit

<https://www.dec.ny.gov/chemical/127317.html>

### WHO TO CONTACT

#### DEPT. OF ENVIRONMENTAL CONSERVATION

Aaron Fischer  
NYSDEC, 625 Broadway  
Albany, NY 12233-7016  
(518) 402-9805

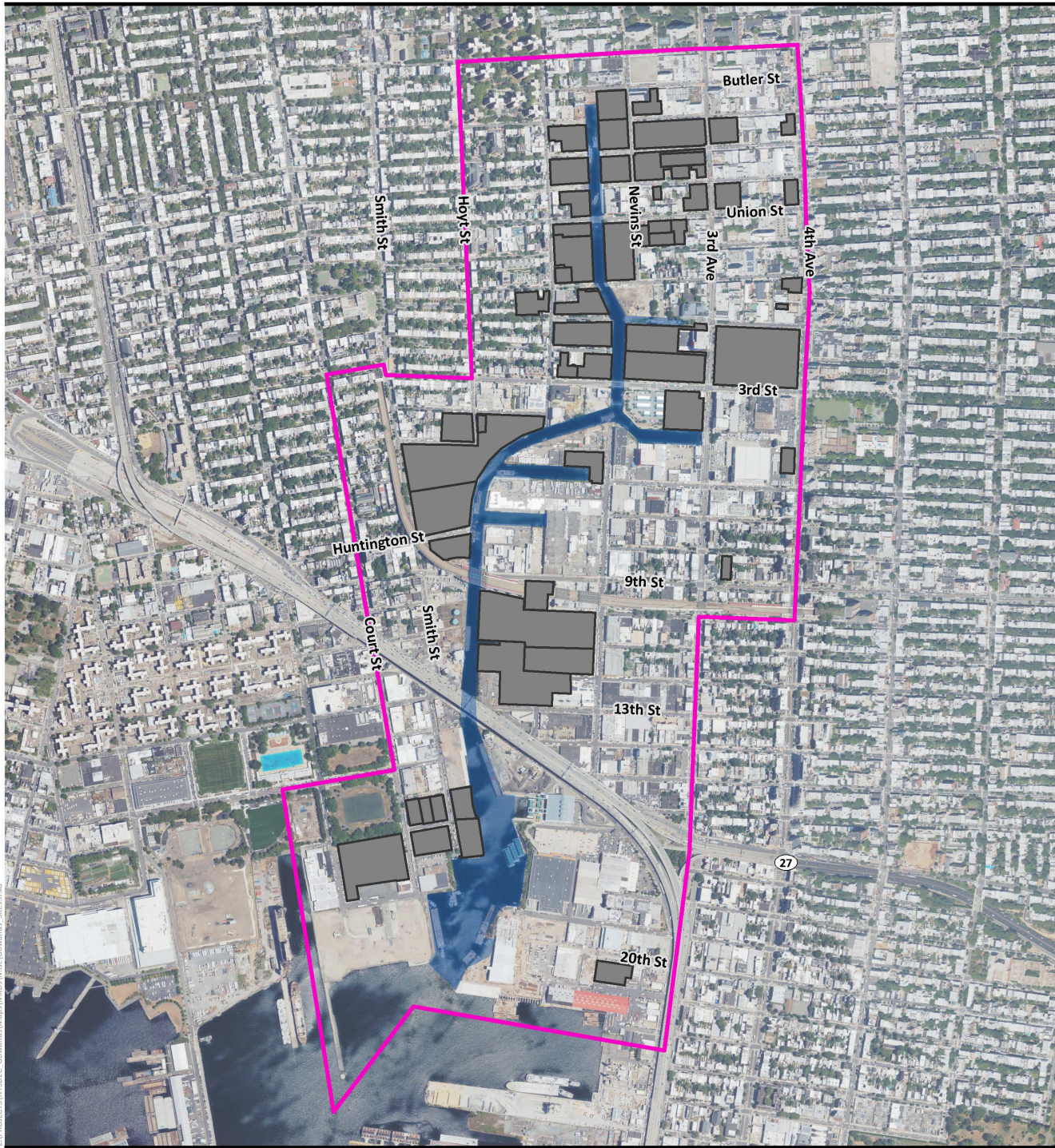
[aaron.fischer@dec.ny.gov](mailto:aaron.fischer@dec.ny.gov)

#### DEPT. OF HEALTH


Daniel Tucholski  
NYSDOH  
Empire State Plaza, Corning Tower Room 1787  
Albany, NY 12237  
(518) 473-4671

[beei@health.ny.gov](mailto:beei@health.ny.gov)





LA\PROJECTS\NYSDEC\_Gowanus\Maps\MOXA\Wides\Gowanus\_Sites.mxd


 Department of Environmental Conservation  
 PREPARED BY: ecology and environment engineering and geology p.c.  
 0 500 1,000 Feet  
 Sources: Kings County 2022, Esri 2021, NYSDEC 2022



- Gowanus Canal
- Gowanus Canal Area Wide Soil Vapor Intrusion (SVI) Boundary
- NYSDEC Remediation Site Boundaries

### Gowanus Canal Area Wide Soil Vapor Intrusion Investigation Area

Gowanus Canal Area  
Brooklyn, New York