



Department of
Environmental
Conservation

Where to Find Information:

Project documents are available at the following location(s) to help the public stay informed.

NYSDEC, Region 2 Office
47-40 21st Street
Long Island City, NY 11101
Call in advance: (718) 482-4900

Who to Contact:

Comments and questions are always welcome and should be directed as follows:

Project-Related Questions:
Bryan Wong, Project Manager
NYSDEC, Region 2 Office
47-40 21st Street
Long Island City, NY 11101
(718) 482-4905
yukyiu.wong@dec.ny.gov

Health-Related Questions:
Stephen Lawrence
NYSDOH
Empire State Plaza
Corning Tower Room 1787
Albany, NY 12237
(518) 402-7860
beeil@health.ny.gov

**For additional information on the New York's
Voluntary Cleanup Program, visit:**
www.dec.ny.gov/chemical/8442.html

FACT SHEET

Voluntary Cleanup Program

Popular Hand Laundry

88 Ingraham Street
Brooklyn, NY 11237

SITE No. V00170

NYSDEC REGION 2

December 2017

NYSDEC Certifies Cleanup Requirements Achieved at Voluntary Cleanup Site

The New York State Department of Environmental Conservation (NYSDEC) has determined that the cleanup requirements to address contamination related to Popular Hand Laundry (the "site") located at 88 Ingraham Street, Brooklyn, NY under New York State's Voluntary Cleanup Program (VCP) have been met. Please see the map for the site location.

The cleanup activities were performed by 88 Ingraham Realty Corp. and Popular Hand Laundry and Cleaners of Richmond Hill, Inc. (collectively, the "Volunteer") with oversight provided by NYSDEC. NYSDEC has issued a release letter to the Volunteer regarding the site. Copies of the release letter and Final Engineering Report (FER), which documents the completion of the site remedy, are available at the location(s) identified under "Where to Find Information."

Completion of the Project: The following activities have been completed to achieve the remedial action objectives:

- Installation, operation and maintenance of Air Sparge (AS)/Soil Vapor Extraction (SVE) to address contamination in soil and groundwater beneath the site;
- Installation and operation of a sub-slab depressurization system (SSDS) following termination of the AS/SVE system operations to prevent migration of contaminated vapor into the on-site building;
- Maintenance of a site cover system consisting of the concrete floor slab;
- Publication of a Site Management Plan (SMP) for long-term management of residual contamination as required by the Declaration of Covenants and Restrictions, including plans for: (1) Institutional and Engineering Controls (IC/ECs); (2) monitoring; (3) operation and maintenance; and (4) reporting; and
- Recording of a Deed Restriction, documenting required IC/ECs, to prevent future exposure to any residual contamination remaining at the site and to ensure implementation of the SMP.

Final Engineering Report Approved: NYSDEC has approved the FER, which:

- Describes the cleanup activities completed.
- Certifies that cleanup requirements have been achieved for the site.
- Describes any ICs/ECs to be used. An institutional control is a non-physical restriction on use of the site, such as a deed restriction, when contamination left over after the cleanup action makes the site suitable for some, but not all uses. An engineering control is a physical barrier or method to manage contamination such as a surface cap or vapor barrier.
- Certifies that an SMP for any engineering controls used at the site has been approved by NYSDEC.

Next Steps: With receipt of a release letter, the Volunteer has no liability to the State for contamination at or coming from the site, subject to certain conditions. A release letter may be modified or revoked if, for example, there is a failure to comply with the terms of the order or agreement with NYSDEC.

VOLUNTARY CLEANUP PROGRAM

Site Description and Background: The 0.2-acre site is located on Ingraham Street in Brooklyn, New York and is identified as Section 10, Block 2998 and Lot 19 on the City of New York Tax map. The site is located in a generally industrial neighborhood bounded by Ingraham Street to the north, a commercial property to the south, a commercial property to the east, and a commercial property to the west. The site was formerly occupied by a commercial dry cleaning business. Investigations at the site undertaken prior to the remediation identified chlorinated volatile organic compounds (including the dry cleaning solvent tetrachloroethylene) in soil, groundwater and soil vapor at the site.

Additional site details, including environmental and health assessment summaries, are available on NYSDEC's Environmental Site Remediation Database (by entering the Site ID, V00170) at:

<http://www.dec.ny.gov/cfmx/extapps/derexternal/index.cfm?pageid=3>

Voluntary Cleanup Program: New York's Voluntary Cleanup Program (VCP) to address the environmental, legal and financial barriers that often hinder the redevelopment and reuse of contaminated properties. The Voluntary Cleanup program was developed to enhance private sector cleanup of brownfields by enabling parties to remediate sites using private rather than public funds and to reduce the development pressures on "greenfield" Site.

For more information about the VCP, visit:

<http://www.dec.ny.gov/chemical/8442.html>

We encourage you to share this fact sheet with neighbors and tenants, and/or post this fact sheet in a prominent area of your building for others to see.

Receive Site Fact Sheets by Email

Have site information such as this fact sheet sent right to your email inbox. NYSDEC invites you to sign up with one or more contaminated sites county email listservs available at the following web page:

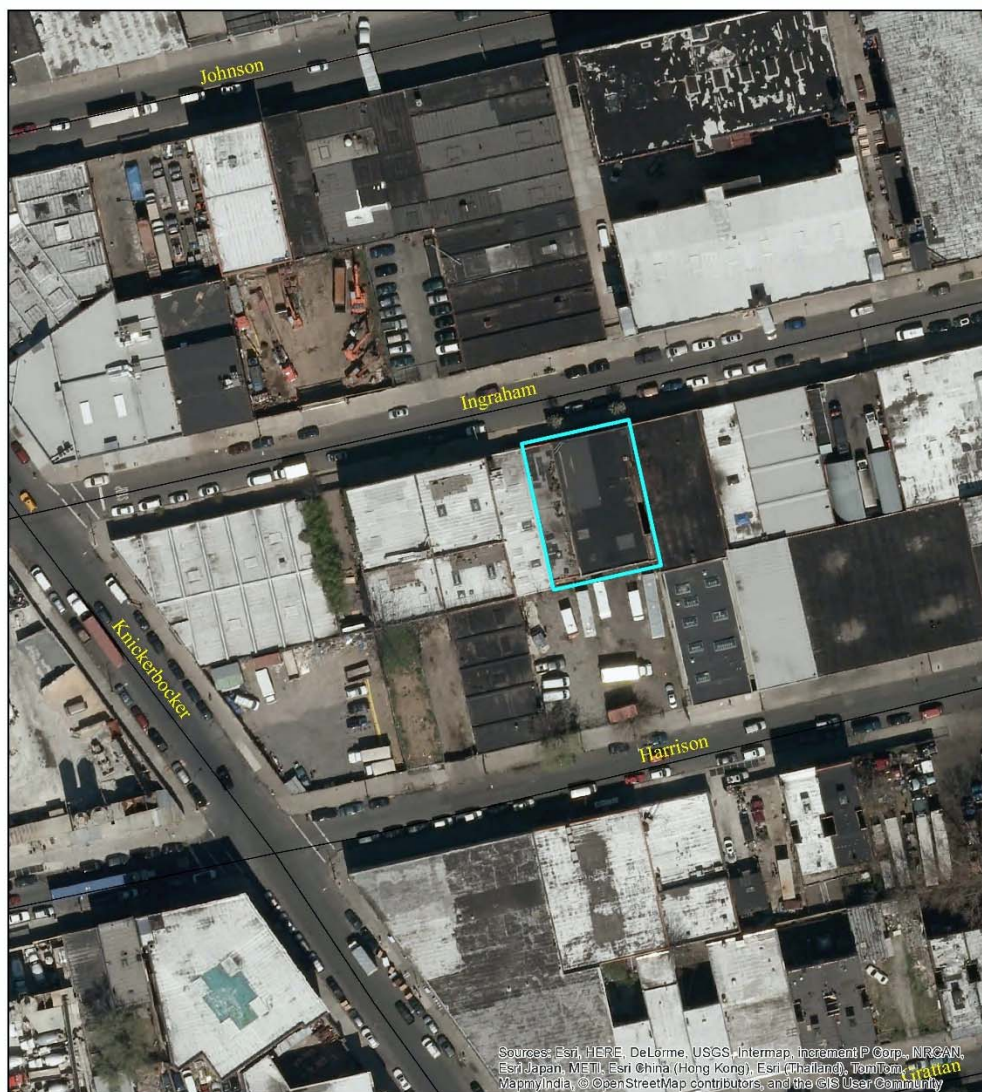
www.dec.ny.gov/chemical/61092.html

It's quick, it's free, and it will help keep you better informed. As a listserv member, you will periodically receive site-related information/ announcements for all contaminated sites in the county(ies) you select.

Note: Please disregard if you already have signed up and received this fact sheet electronically.

VOLUNTARY CLEANUP PROGRAM

Figure 1 – Site Location Map



Department of
Environmental
Conservation

0 25 50 100 150 200 Feet



Site Map for V00170