



Department of  
Environmental  
Conservation

# **NEW YORK STATE AMBIENT AIR QUALITY REPORT FOR 2020**

New York State Ambient Air Monitoring Program

**BUREAU OF AIR QUALITY SURVEILLANCE  
DIVISION OF AIR RESOURCES  
NEW YORK STATE DEPARTMENT OF ENVIRONMENTAL CONSERVATION**

625 Broadway Albany, NY 12233-3256  
P: (518) 402-8508 | [DAR.web@dec.ny.gov](mailto:DAR.web@dec.ny.gov)

[www.dec.ny.gov](http://www.dec.ny.gov)

## Summary and background information

This technical document is designed to provide summary information about the ambient air quality in New York State as it relates to the EPA's National Ambient Air Quality Standards (NAAQS). The data here is provided in the same format as the EPA NAAQS, and as such may include information at air quality monitoring stations that have since been closed. In the footer of each page there is a key to assist in the interpretation of the data. Site numbers are the NYS internal site identifiers and are different than the AQS site numbers.

This document does not cover all pollutants measured, only those that have a NAAQS criteria. More information about the other programs for which the NYSDEC collects data, and more detailed information about the instrumentation currently available at individual site can be found in the [Monitoring Network Plan](#).

For more information about the current and historic NAAQS, standards for regulatory action, health effects of individual pollutants, and more please go to the [EPA's Criteria Air Pollutants webpage](#).

Full datasets are available for download and review from the [EPA Air Data webpage using the API](#).

For current Air Quality Index (AQI) Forecast and Current Observations for New York State, please go to the [NYSDEC's AQI webpage](#).

### 2020 Change Notes:

Due to the COVID-19 Pandemic, some sites were inaccessible causing data completeness to be below 75%.

File version: 4/13/2020

## National Ambient Air Quality Standards

Pollutant		Primary/ Secondary	Averaging Time	Level	Form
Carbon Monoxide		primary	8-hour	9 ppm	Not to be exceeded more than once per year
			1-hour	35 ppm	
Lead		primary and secondary	Rolling 3-month average	0.15 µg/m <sup>3</sup> (1)	Not to be exceeded
Nitrogen Dioxide		primary	1-hour	100 ppb	98th percentile of 1-hour daily maximum concentrations, averaged over 3 years
		primary and secondary	Annual	53 ppb (2)	Annual Mean
Ozone		primary and secondary	8-hour	0.070 ppm (3)	Annual fourth-highest daily maximum 8-hr concentration, averaged over 3 years
Particle Pollution	PM <sub>2.5</sub>	primary	Annual	12 µg/m <sup>3</sup>	annual mean, averaged over 3 years
		secondary	Annual	15 µg/m <sup>3</sup>	annual mean, averaged over 3 years
		primary and secondary	24-hour	35 µg/m <sup>3</sup>	98th percentile, averaged over 3 years
	PM <sub>10</sub>	primary and secondary	24-hour	150 µg/m <sup>3</sup>	Not to be exceeded more than once per year on average over 3 years
Sulfur Dioxide		primary	1-hour	75 ppb (4)	99th percentile of 1-hour daily maximum concentrations, averaged over 3 years
		secondary	3-hour	0.5 ppm	Not to be exceeded more than once per year

(Annual Means in parentheses are based on less than 75% available data)

\*Federal Ambient Air Quality Standard

[Date of Occurrence, Hour]

+ Denotes a contravention of Federal AAQS

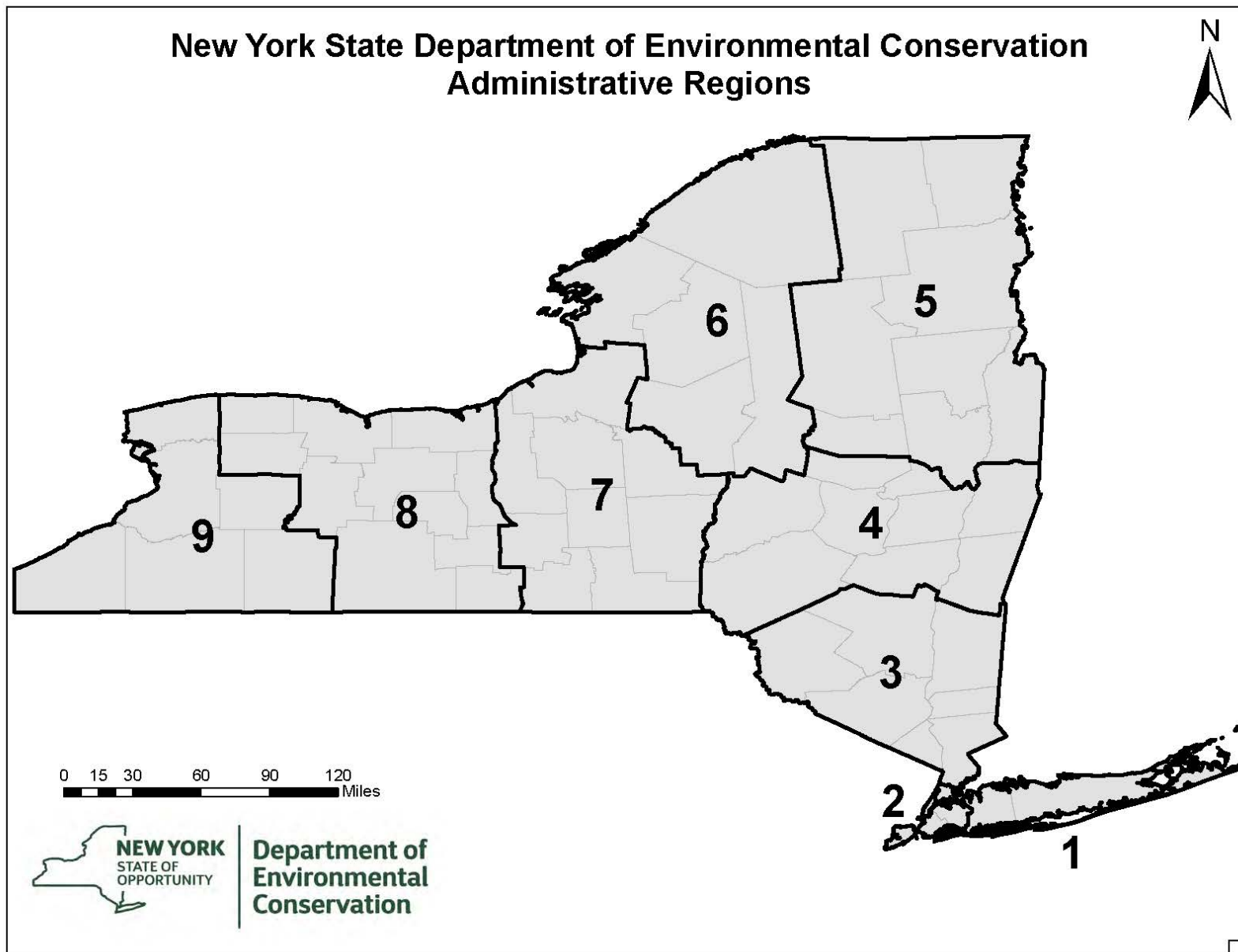
## Footnotes

<sup>(1)</sup> Final rule signed October 15, 2008. The 1978 lead standard ( $1.5 \mu\text{g}/\text{m}^3$  as a quarterly average) remains in effect until one year after an area is designated for the 2008 standard, except that in areas designated nonattainment for the 1978 year, the 1978 standard remains in effect until implementation plans to attain or maintain the 2008 standard are approved.

<sup>(2)</sup> The official level of the annual  $\text{NO}_2$  standard is 0.053 ppm, equal to 53 ppb, which is shown here for the purpose of clearer comparison to the 1-hour standard.

<sup>(3)</sup> Final rule signed October 1, 2015, and effective December 28, 2015. The previous (2008)  $\text{O}_3$  standards additionally remain in effect in some areas. Revocation of the previous (2008)  $\text{O}_3$  standards and transitioning to the current (2015) standards will be addressed in the implementation rule for the current standards.

<sup>(4)</sup> The previous  $\text{SO}_2$  standards (0.14 ppm 24-hour and 0.03 ppm annual/ 30 ppb) will additionally remain in effect in certain areas: (1) any area for which it is not yet 1 year since the effective date of designation under the current (2010) standards, and (2) any area for which implementation plans providing for attainment of the current (2010) standard have not been submitted and approved and which is designated nonattainment under the previous  $\text{SO}_2$  standards or is not meeting the requirements of a SIP call under the previous  $\text{SO}_2$  standards (40 CFR 50.4(3)). A SIP call is an EPA action requiring a state to resubmit all or part of its State Implementation Plan to demonstrate attainment of the require NAAQS.

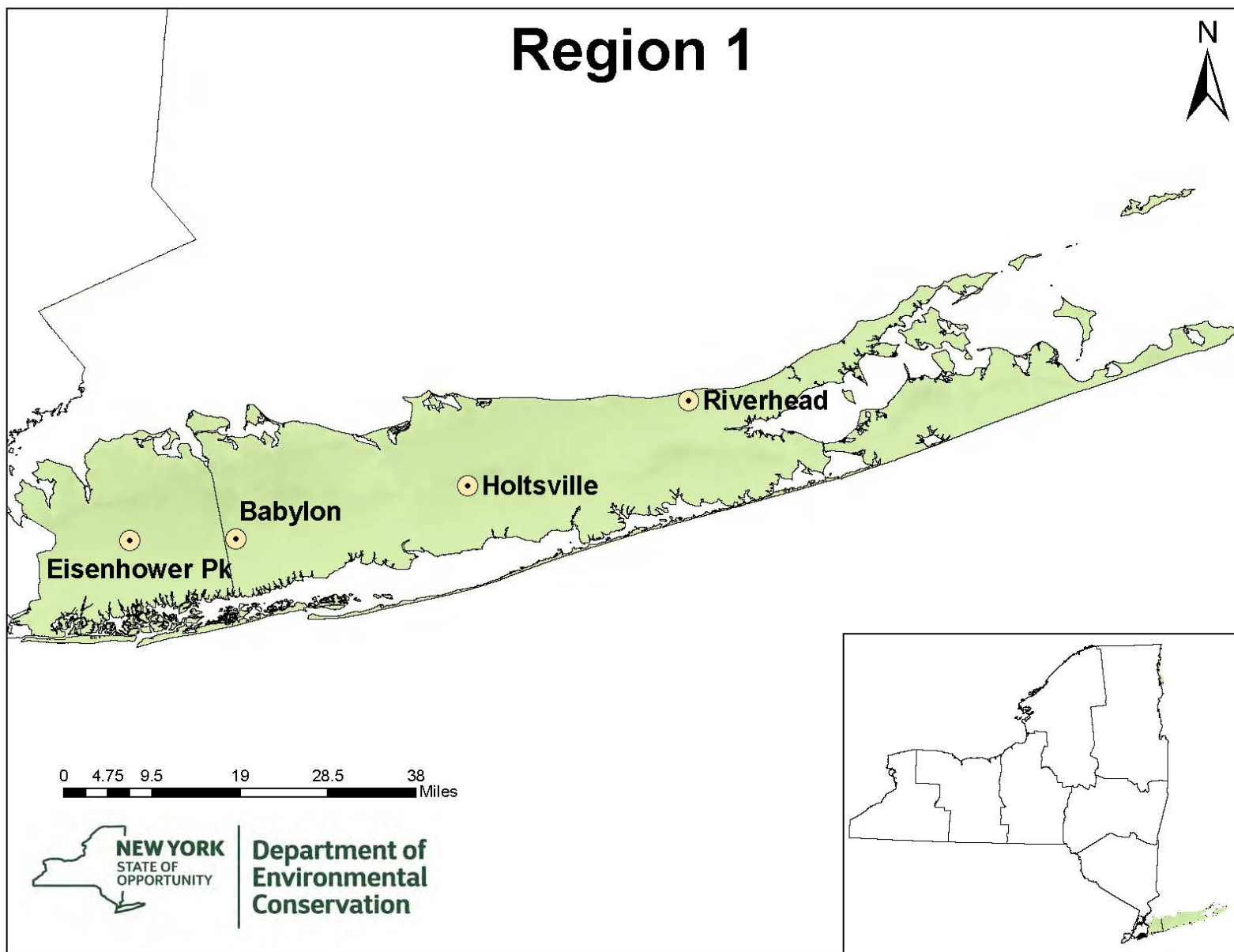


(Annual Means in parentheses are based on less than 75% available data)

\*Federal Ambient Air Quality Standard

[Date of Occurrence, Hour]

+ Denotes a contravention of Federal AAQS



(Annual Means in parentheses are based on less than 75% available data)

\*Federal Ambient Air Quality Standard

[Date of Occurrence, Hour]

+ Denotes a contravention of Federal AAQS

## SULFUR DIOXIDE - Continuous Pulsed Fluorescence

Parameter Code: 42401

Annual Averages 2010 through 2020

### Annual Arithmetic Mean (ppb) - Primary Standard (12-month average not to exceed 30 PPB\* <sup>(4)</sup>)

Station	Site No.	2010	2011	2012	2013	2014	2015	2016	2017	2018	2019	2020
Eisenhower Park	36-059-0005	2.09	1.97	1.51	1.12	1.35	1.03	0.4	0.23	0.23	0.24	0.30
Holtsville	36-103-0009	5.81	2.22	1.03	1.2	0.84	0.77	0.39	0.16	0.12	0.08	0.06

Holtsville site (5151-10) was operated by Suffolk County Health Dept. until 9/30/10, when NYSDEC commenced monitoring.

### Comparison Between NYS Ambient Air Quality and Ambient Air Quality Standards for Calendar Year 2020

		One Hour Averages average of 99 <sup>th</sup> percentile for last 3 years not to exceed 75 PPB *					
		Observations		99 <sup>th</sup> Percentile, PPB			
		Total Obs.	Data Avail	2018	2019	2020	3-yr Avg.
Station	Site No.						
Eisenhower Park	36-059-0005	8,603	98	8.2	10.6	13.6	10.80
Holtsville	36-103-0009	8,150	93	4.9	3.2	2.4	3.50

(Annual Means in parentheses are based on less than 75% available data)

\*Federal Ambient Air Quality Standard

[Date of Occurrence, Hour]

+ Denotes a contravention of Federal AAQS

**INHALABLE PARTICULATES (PM<sub>2.5</sub>)****Comparison Between NYS Ambient Air Quality and Ambient Air Quality Standards for Calendar Year 2020**(Average of last 3 years' annual means not to exceed 12 µg/m<sup>3</sup> \*; and average of 98th percentile for last 3 years not to exceed 35 µg/m<sup>3</sup> \*)

Station	EPA Param Code	EPA Method Code	Site No.	Daily Obs	Maximum Values, µg/m <sup>3</sup>			98th Percentile, µg/m <sup>3</sup>				Quarterly Averages, 2020				Annual Mean, µg/m <sup>3</sup>			
					1	2	3	2018	2019	2020	3-yr Avg.	1	2	3	4	2018	2019	2020	3-yr Avg.
Eisenhower Park (C)	88502	702	36-059-0005	366	22.0	21.5	19.1	16.6	15.0	15.0	15.5	7.0	3.6	4.8	6.7	6.0	5.7	5.5	5.7
					7-Nov	8-Nov	23-Jan												
Babylon (F)	88101	145	36-103-0002	93	21.6	19.1	14.3	16.7	17.0	19.1	17.6	5.5	6.2	7.4	6.1	6.8	6.4	6.3	6.5
					20-Dec	8-Nov	11-Dec												
Holtsville (C)	88502	702	36-103-0009	354	21.4	18.9	17.3	16.6	13.3	14.4	14.8	6.8	3.7	4.8	6.4	6.6	5.5	5.4	5.8
					8-Nov	7-Nov	4-Jul												

(Annual Means in parentheses are based on less than 75% available data)

\*Federal Ambient Air Quality Standard

[Date of Occurrence, Hour]

+ Denotes a contravention of Federal AAQS



**OZONE** - Continuous UV Light Absorption

Parameter Code: 44201

**Comparison Between NYS Ambient Air Quality and Ambient Air Quality Standards for Calendar Year 2020**

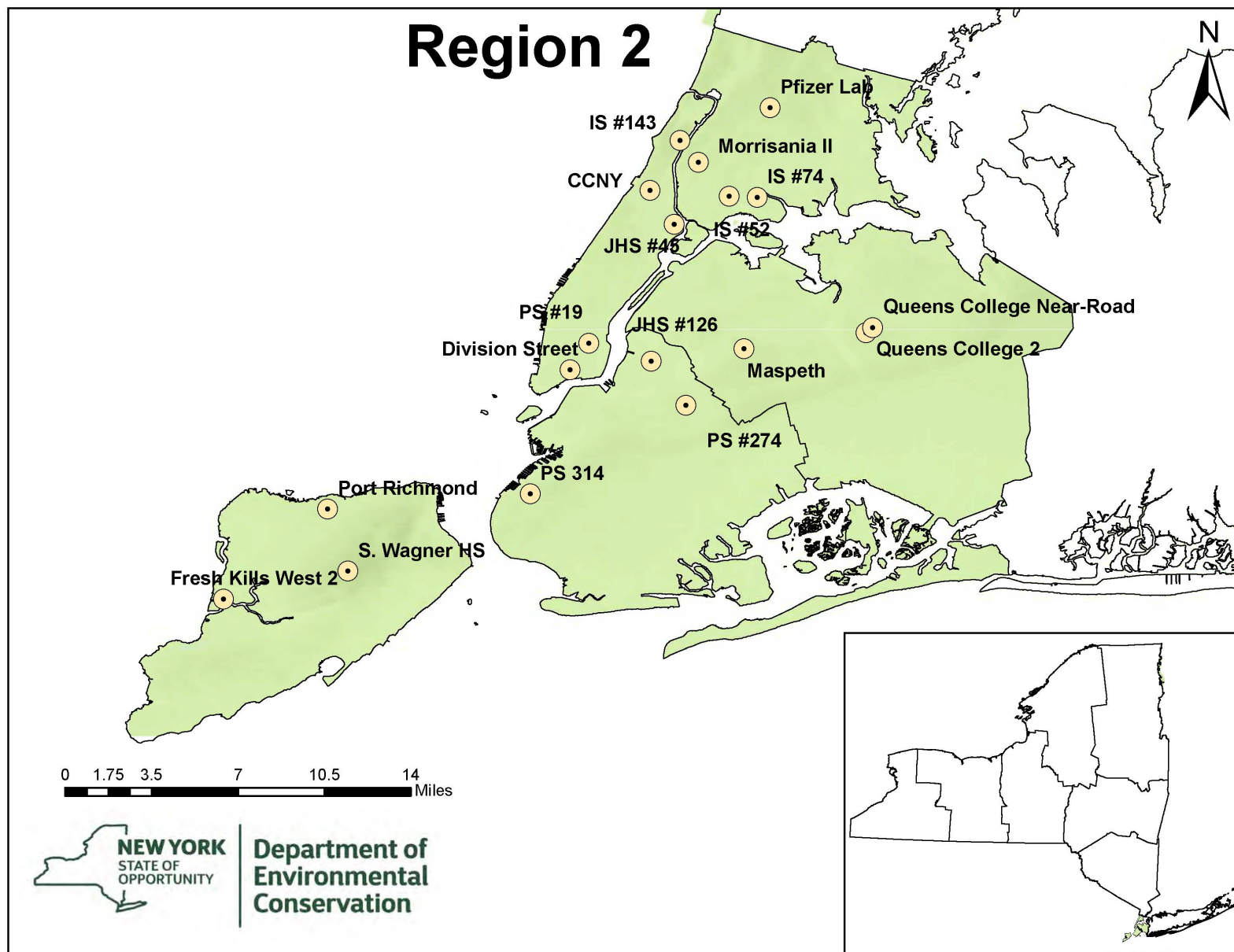
8-hr Running Average Begin Hour									4th Highest Daily Maximum 8-Hour Average-			
		Observations			Daily Highest Values, PPM				Not to exceed an avg of 0.070 ppm during the last 3 years.			
Station	Site No.	Total Daily Obs.	% Avail	Days >.070 PPM	1st	2nd	3rd	4th	2018	2019	2020	Avg.
Babylon	36-103-0002	239	98	3	0.080 20-Jul	0.073 26-Jun	0.071 27-Jul	0.069 18-Jul	0.074 6-Aug	0.072 27-Jun	0.069 18-Jul	0.071
Holtsville	36-103-0009	236	97	4	0.08 20-Jul	0.074 27-Jul	0.073 28-Jul	0.073 28-Jul	0.076 6-Aug	0.068 3-Jul	0.073 28-Jul	0.072
Riverhead	36-103-0004	245	100	3	0.075 27-Jul	0.075 27-Jul	0.072 5-Aug	0.069 20-Jul	0.072 2-May	0.07 31-May	0.069 20-Jul	0.070

(Annual Means in parentheses are based on less than 75% available data)

\*Federal Ambient Air Quality Standard

[Date of Occurrence, Hour]

+ Denotes a contravention of Federal AAQS



(Annual Means in parentheses are based on less than 75% available data)

\*Federal Ambient Air Quality Standard

[Date of Occurrence, Hour]

+ Denotes a contravention of Federal AAQS

**SULFUR DIOXIDE** - Continuous Pulsed Fluorescence

Parameter Code: 42401

**Annual Averages 2010 through 2020**Annual Arithmetic Mean (ppb) - Primary Standard  
(12-month average not to exceed 30 PPB <sup>(4)</sup>)

Station	Site No.	2010	2011	2012	2013	2014	2015	2016	2017	2018	2019	2020
Botanical Garden (Harding Lab/Pfizer Lab)	36-005-0133	4.83	4.65	3.28	2.44	1.9	1.29	0.84	0.59	0.63	0.56	0.44
IS 52	36-005-0110	6.22	xx	2.1	1.22	1.36	1.83	0.67	0.54	0.57	0.41	0.42
Queens College	36-081-0124	2.83	2.65	1.79	1.22	1.11	0.75	0.57	0.52	0.41	0.36	0.35

Sampling was suspended at 7094-07 on 06/24/10 due to building construction and resumed on 08/10/13.

Sampling was suspended at 7093-10 in 2009

**Comparison Between NYS Ambient Air Quality and Ambient Air Quality Standards for Calendar Year 2020**

		One Hour Averages					
		average of 99 <sup>th</sup> percentile for last 3 years not to exceed 75 PPB *					
		Observations		99 <sup>th</sup> Percentile, PPB			
Station	Site No.	Total Obs.	% Avail	2018	2019	2020	3-yr Avg.
Botanical Garden (Harding Lab/Pfizer Lab)	36-005-0133	8,525	97	6.2	4.3	3.8	4.77
IS 52	36-005-0110	8,662	99	7.5	4.5	4.3	5.43
Queens College 2	36-081-0124	8,400	96	5.5	5.4	6.4	5.77

(Annual Means in parentheses are based on less than 75% available data)

\*Federal Ambient Air Quality Standard

[Date of Occurrence, Hour]

+ Denotes a contravention of Federal AAQS

## INHALABLE PARTICULATES (PM<sub>10</sub>)

Parameter Code:81102

### Comparison Between NYS Ambient Air Quality and Ambient Air Quality Standards for Calendar Year 2020

		24-Hour Concentrations - µg/m <sup>3</sup>							# of Days > 150 µg/m <sup>3</sup> - Not to exceed an expected avg of one per year during the last 3 years *						
		Total Obs.	Maximum		2nd Max.		3rd Max.		2018		2019		2020		Exp. Avg.
Station	Site No.		Value	Date	Value	Date	Value	Date	Mea	Est	Mea	Est	Mea	Est	
Division Street	36-061-0134	30	24.	22-Jan	21	3-Feb	18	10-Jan	0	0	0	0	0	0	0
IS 52	36-005-0110	123	31	24-Sep	31	24-Sep	28	11-Dec	0	0	0	0	0	0	0
Queens College 2	36-081-0124	62	28	2-Feb	24	11-Nov	21	2-Jul	0	0	0	0	0	0	0

(Annual Means in parentheses are based on less than 75% available data)

\*Federal Ambient Air Quality Standard

[Date of Occurrence, Hour]

+ Denotes a contravention of Federal AAQS

## INHALABLE PARTICULATES (PM<sub>2.5</sub>)

(Manhattan Sites)

**Comparison Between NYS Ambient Air Quality and Ambient Air Quality Standards for Calendar Year 2020**  
(Average of last 3 years' annual means not to exceed 12 µg/m<sup>3</sup> \*; and average of 98th percentile for last 3 years not to exceed 35 µg/m<sup>3</sup> \*)

Station	EPA Param Code	EPA Method Code	Site No.	Total Obs.	Maximum Values, µg/m <sup>3</sup>			98th Percentile, µg/m <sup>3</sup>				Quarterly Averages, 2020				Annual Mean, µg/m <sup>3</sup>			
					1 <sup>st</sup>	2 <sup>nd</sup>	3 <sup>rd</sup>	2018	2019	2020	3-yr Avg.	1	2	3	4	2018	2019	2020	3-yr Avg.
JHS 45 (F)	88101	145	36-061-0079	108	20.7 8-Nov	17 24-Feb	16.4 20-Dec	19.7	18.7	17.0	18	6.9	xx	7.6	6.4	8.1	7.2	7.1	7.4
IS 143 (C)	88502	702	36-061-0115	290	23.3 8-Nov	22.5 25-Dec	22.0 9-Nov	18.9	17.0	17.5	18	8.7	5.0	6.3	8.1	7.7	7.0	7.5	7.4
PS 19 (C)*	88502	702	36-061-0128	0	xx xx	xx xx	xx xx	21.8	17.8	xx	20	xx	xx	xx	xx	8.8	8.0	xx	8.4
PS 19 (F)*	88101	145	36-061-0128	0	xx xx	xx xx	xx xx	27	19.6	xx	23	xx	xx	xx	xx	10.4	8.8	xx	9.6
Division St (F)	88101	145	36-061-0134	23	16.5 24-Feb	13.2 18-Feb	13.2 4-Jan	21.6	19.5	16.5	19	9.1	xx	xx	xx	9.6	8.6	9.1	9.1
Division St (C)	88502	702	36-061-0134	69	19.4 24-Jan	17.3 23-Jan	16.1 3-Jan	19.3	17.7	16.6	18	8.8	xx	xx	xx	6.8	6.8	8.8	7.5
CCNY (C)	88502	702	36-061-0135	328	18.5 23-Jan	16.9 25-Sep	16.6 5-Jul	17.5	14.7	15.6	16	7.7	4.4	5.8	6.8	8.0	6.6	6.1	6.9

(F) = Federal Reference Method or Federal Equivalent Method: Parameter Code: 88101

(C) = Continuous, used for AQI calculations. Values based on 24-hour averages of 1-hour values. Parameter Code 88502

\* Sampling stopped at PS19 due to roof work in 2019

(Annual Means in parentheses are based on less than 75% available data)

\*Federal Ambient Air Quality Standard

[Date of Occurrence, Hour]

+ Denotes a contravention of Federal AAQS

## INHALABLE PARTICULATES (PM<sub>2.5</sub>)

(Bronx &amp; Brooklyn Sites)

**Comparison Between NYS Ambient Air Quality and Ambient Air Quality Standards for Calendar Year 2020**  
(Average of last 3 years' annual means not to exceed 12 µg/m<sup>3</sup> \*; and average of 98th percentile for last 3 years not to exceed 35 µg/m<sup>3</sup> \*)

Station	EPA Param Code	EPA Method Code	Site No.	Total Obs.	Maximum Values, µg/m <sup>3</sup>			98th Percentile, µg/m <sup>3</sup>				Quarterly Averages, 2020				Annual Mean, µg/m <sup>3</sup>			
					1 <sup>st</sup>	2 <sup>nd</sup>	3 <sup>rd</sup>	2018	2019	2020	3-yr Avg.	1st	2nd	3rd	4th	2018	2019	2020	3-yr Avg.
Morrisania (C)	88502	702	36-005-0080	366	23.3 4-Jul	22.2 8-Nov	22.1 9-Nov	18.6	16.1	15.9	16.9	7.6	3.7	5.3	7.0	7.0	6.2	5.9	6.4
IS 52 (F)	88101	145	36-005-0110	215	29.9 29-Jan	24.5 24-Jan	24.5 24-Jan	19.3	19.4	20.4	19.7	6.3	xx	7.2	6.5	8.0	7.4	6.7	7.3
IS 52 (C)	88101	236	36-005-0110	365	30.0 9-Nov	27.1 8-Nov	24.6 21-Dec	18.9	20.2	20.6	19.9	8.6	6.8	9.1	8.9	8.6	8.6	8.4	8.5
IS 74 (C)	88502	702	36-005-0112	366	25.4 9-Nov	21.7 8-Nov	19.3 25-Sep	17.0	15.8	15.9	16.2	7.8	4.1	5.9	7.1	6.6	6.3	6.2	6.4
Botanical Gdn - Pfizer (F)	88101	145	36-005-0133	98	20 8-Nov	16.5 20-Dec	16.5 11-Dec	21.5	19.2	16.5	19.1	6.9	6.6	7.6	6.5	8.3	7.0	6.9	7.4
PS 314 (C)	88502	702	36-047-0052	366	22.5 8-Nov	22.4 9-Nov	17.7 24-Jan	15.9	14.7	14.7	15.1	7.0	3.3	5.3	6.6	6.1	6.0	5.5	5.9
JHS 126 (F)	88101	145	36-047-0122	72	24.5 8-Nov	19.7 14-Nov	17.8 11-Dec	17.9	18.4	19.7	18.7	7.3	xx	7.6	7.2	7.9	7.6	7.4	7.6
PS 274 (C)	88502	702	36-047-0118	351	23.2 9-Nov	22.4 8-Nov	20.4 13-Aug	17.1	15.1	15.4	15.9	7.4	3.6	4.8	6.4	6.2	5.9	5.5	5.9

(F) = Federal Reference Method or Federal Equivalent Method; Parameter Code: 88101

(C) = Continuous, used for AQI calculations. Values based on 24-hour averages of 1-hour values. Parameter Code 88502

(Annual Means in parentheses are based on less than 75% available data)

\*Federal Ambient Air Quality Standard

[Date of Occurrence, Hour]

+ Denotes a contravention of Federal AAQS

## INHALABLE PARTICULATES (PM<sub>2.5</sub>)

(Queens, and Staten Island Sites)

**Comparison Between NYS Ambient Air Quality and Ambient Air Quality Standards for Calendar Year 2020**  
(Average of last 3 years' annual means not to exceed 12 µg/m<sup>3</sup> \*; and average of 98th percentile for last 3 years not to exceed 35 µg/m<sup>3</sup> \*)

Station	EPA Param Code	EPA Method Code	Site No.	Total Obs.	Maximum Values, µg/m <sup>3</sup>			98th Percentile, µg/m <sup>3</sup>				Quarterly Averages, 2020				Annual Mean, µg/m <sup>3</sup>			
					1 <sup>st</sup>	2 <sup>nd</sup>	3 <sup>rd</sup>	2018	2019	2020	3-yr Avg.	1st	2nd	3rd	4th	2018	2019	2020	3-yr Avg.
Maspeth Library (C)	88502	702	36-081-0120	206	16.6 3-Jan	16.3 24-Jan	15.3 23-Jan	16.5	14.9	14.3	15.2	7.3	3.3	2.2	8.5	6.5	6.0	5.6	6.0
Queens College 2 (FRM)	88101	145	36-081-0124	226	20.7 8-Nov	15.5 24-Sep	15.3 20-Dec	19.1	17.8	16.1	17.7	6.4	6.8	7.9	6.2	7.3	6.7	6.9	7.0
Queens College 2 (FEM)	88101	182	36-081-0124	361	27.4 9-Nov	24.0 21-Dec	22.2 8-Nov	18.3	16.6	16.1	17.0	5.8	4.4	6.5	5.9	6.6	5.9	5.7	5.9
Queens College Near Road (C)	88502	702	36-081-0125	184	25.1 9-Nov	24.1 8-Nov	18.7 21-Dec	18.6	16.7	17.9	17.8	xx	xx	6.1	7.6	7.4	7.2	6.8	7.2
Queens College Near Road (F)	88101	145	36-081-0125	88	22.4 8-Nov	16.4 24-Sep	15.8 20-Dec	19.5	18.4	16.4	18.1	7.5	7.5	8.1	6.4	8.3	7.8	7.4	7.8
Port Richmond (F)	88101	145	36-085-0055	87	24.2 8-Nov	22 7-Jan	18.1 24-Feb	20.1	20.9	22.0	21.0	7.8	6.9	8.7	7.2	7.7	7.6	7.6	7.6
Port Richmond (C)	88502	702	36-085-0055	332	24.6 8-Nov	22.4 12-Dec	20.9 7-Nov	18.3	16.6	16.7	17.2	7.4	3.4	6.3	7.0	7.2	6.0	6.0	6.4
Freshkills West (C)	88502	702	36-085-0111	363	21.5 8-Nov	21.2 12-Dec	19.8 9-Nov	20.5	15.4	15.2	17.0	7.0	4.3	5.4	6.2	8.0	6.5	5.7	6.8

(FRM or FEM) = Federal Reference Method or Federal Equivalent Method: Parameter Code: 88101

(C) = Continuous, used for AQI calculations. Values based on 24-hour averages of 1-hour values. Parameter Code 88502

(Annual Means in parentheses are based on less than 75% available data)

\*Federal Ambient Air Quality Standard

[Date of Occurrence, Hour]

+ Denotes a contravention of Federal AAQS

**CARBON MONOXIDE** - Continuous Gas Filter Correlation

Parameter Code: 42101

**Comparison Between NYS Ambient Air Quality and Ambient Air Quality Standards for Calendar Year 2020**

		One-Hour Average						Running 8-Hour Average (Non-Overlapping)				
		Maximum not to exceed 35 PPM more than once per calendar year *						Maximum not to exceed 9 PPM more than once per calendar year *				
		Observations			Highest Values, PPM			Observations		Highest Values, PPM		
Station	Site No.	Total Obs.	% Avail	>35 PPM	1st	2nd	3rd	Total	>9 PPM	1st	2nd	Days> 9 PPM
CCNY	36-061-0135	8,585	98	0	1.99 4-Feb	1.80 3-Jan	1.69 23-Jan	2,845	0	1.50 4-Feb	1.40 23-Jan	0
Botanical Gardens (Pfizer Lab)	36-005-0133	7,629	87	0	1.92 12-Dec	1.72 11-Dec	1.59 24-Jan	2,533	0	1.30 24-Jan	1.20 23-Jan	0
Queens College 2	36-081-0124	7,977	91	0	2.13 9-Nov	1.88 18-Oct	1.60 11-Dec	2,653	0	1.60 9-Nov	1.60 9-Nov	0
Queens College Near Road	36-081-0125	7,893	90	0	2.33 9-Nov	2.12 8-Nov	2.02 18-Oct	2,489	0	1.80 9-Nov	1.80 9-Nov	0

(Annual Means in parentheses are based on less than 75% available data)

\*Federal Ambient Air Quality Standard

[Date of Occurrence, Hour]

+ Denotes a contravention of Federal AAQS



**OZONE** - Continuous UV Light Absorption

(Bronx, Brooklyn, and Staten Island Sites)

Parameter Code: 44201

**Comparison Between NYS Ambient Air Quality and Ambient Air Quality Standards for Calendar Year 2020**

		8-hr Running Average Begin Hour							4th Highest Daily Maximum 8-Hour Average-			
		Observations			Daily Highest Values, PPM				Not to exceed an avg of 0.070 ppm during the last 3 years			
Station	Site No.	Total Obs.	% Avail	Days >.070 PPM	1st	2nd	3rd	4th	2018	2019	2020	Avg.
Botanical Garden (Pfizer Lab)	36-005-0133	243	100	1	0.073 9-Jun	0.070 19-Jul	0.070 19-Jul	0.069 22-Jul	0.077 6-Aug	0.068 17-Jul	0.069 22-Jul	0.071+
IS 52	36-005-0110	243	100	0	0.069 9-Jun	0.068 22-Jul	0.068 22-Jul	0.066 19-Jul	0.071 18-Jun	0.069 29-Jul	0.066 19-Jul	0.068
Freshkills West	36-085-0111	236	97	2	0.073 22-Jul	0.071 9-Jun	0.063 1-Aug	0.062 19-Jul	xx xx	0.065 30-Jul	0.062 19-Jul	0.063
Susan Wagner	36-085-0067	xx	0	0	xx xx	xx xx	xx xx	xx xx	xx xx	xx xx	xx xx	xx

Sampling was suspended at 7094-01 from in 2018 due to building construction

(Annual Means in parentheses are based on less than 75% available data)

\*Federal Ambient Air Quality Standard

[Date of Occurrence, Hour]

+ Denotes a contravention of Federal AAQS

NYSDEC Region **2**

## OZONE - Continuous UV Light Absorption

(Manhattan and Queens Sites)

Parameter: 44201

### Comparison Between NYS Ambient Air Quality and Ambient Air Quality Standards for Calendar Year 2020

Comparison Between NYS Ambient Air Quality and Ambient Air Quality Standards for Calendar Year 2020												
		8-hr Running Average Begin Hour							4th Highest Daily Maximum 8-Hour Average-			
		Observations			Daily Highest Values, PPM				Not to exceed an avg of 0.070 ppm during the last 3 years			
Station	Site No.	Total Obs.	% Avail	Days >.070 PPM	1st	2nd	3rd	4th	2018	2019	2020	Avg.
CCNY	36-061-0135	242	99	1	0.073 22-Jul	0.070 19-Jul	0.070 19-Jul	0.069 9-Jun	0.077 10-Jul	0.066 3-Jul	0.069 9-Jun	0.070
Queens College	36-081-0124	341	93	3	0.082 30-Jul	0.072 27-Jul	0.071 22-Jul	0.068 9-Jun	0.073 25-May	0.071 29-Jul	0.068 9-Jun	0.070

(Annual Means in parentheses are based on less than 75% available data)

\*New York and Federal Ambient Air Quality Standard + Denotes a contravention of NYS/Federal AAQS

**NITROGEN DIOXIDE** - Continuous Chemiluminescence

Parameter:42602

**Annual Averages 2010 through 2020**Annual Arithmetic Mean (PPB) - Primary Standard  
(12-month average not to exceed 53 PPB \*)

Station	Site No.	2010	2011	2012	2013	2014	2015	2016	2017	2018	2019	2020
Botanical Garden (Harding Lab/Pfizer Lab)	36-005-0133 /7094-06	20.1	20.86	18.61	18.37	17.2	17.1	15.59	14.91	14.44	12.81	12.36
IS 52	36-005-0110	24.94	xx	20.8	20.67	19.88	20.13	18.27	17.3	17.46	16.87	15.22
Queens College	36-081-0124	19.28	21.62	17.5	17.5	16.75	17.16	15.81	15.25	14.44	14.18	12.46
Queens College Near-Road	36-081-0125	xx	xx	xx	xx	xx	xx	xx	16.29	16.44	16.84	14.79

Sampling was suspended at 7094-07 on 06/24/10 due to building construction, and resumed on 08/10/13.

**Comparison Between NYS Ambient Air Quality and Ambient Air Quality Standards for Calendar Year 2020**

Station	Site No.	One-Hour Averages - average of 98th percentile for last 3 years not to exceed 75 PPB *								
		Observations		98th Percentile, PPB				Highest Values, PPB		
		Total	% Avail	2018	2019	2020	3-yr avg.	1st	2nd	3rd
Botanical Gardens - Pfizer Lab	36-005-0133	8,648	99	53.9	50.4	47.1	50.5	62.0 02/24 :08	59.76 11/08 :20	55.34 02/24 :11
IS 52	36-005-0110	7,673	88	59.3	57.7	52.7	56.6	76.4 11/08 :22	75.9 11/08 :23	75.1 11/09 :00
Queens College	36-081-0124	8,512	97	53.1	53.9	52.4	53.1	76.2 11/09 :09	64.5 11/09 :08	64.3 11/09 :10
Queens College Near-Road	36-081-0125	8,222	94	53.5	51.0	54.1	52.9	72.8 11/09 :09	63.8 11/09 :10	60.7 11/09 :08

(Annual Means in parentheses are based on less than 75% available data)

\*New York and Federal Ambient Air Quality Standard + Denotes a contravention of NYS/Federal AAQS

## LEAD-PM<sub>10</sub> Samplers

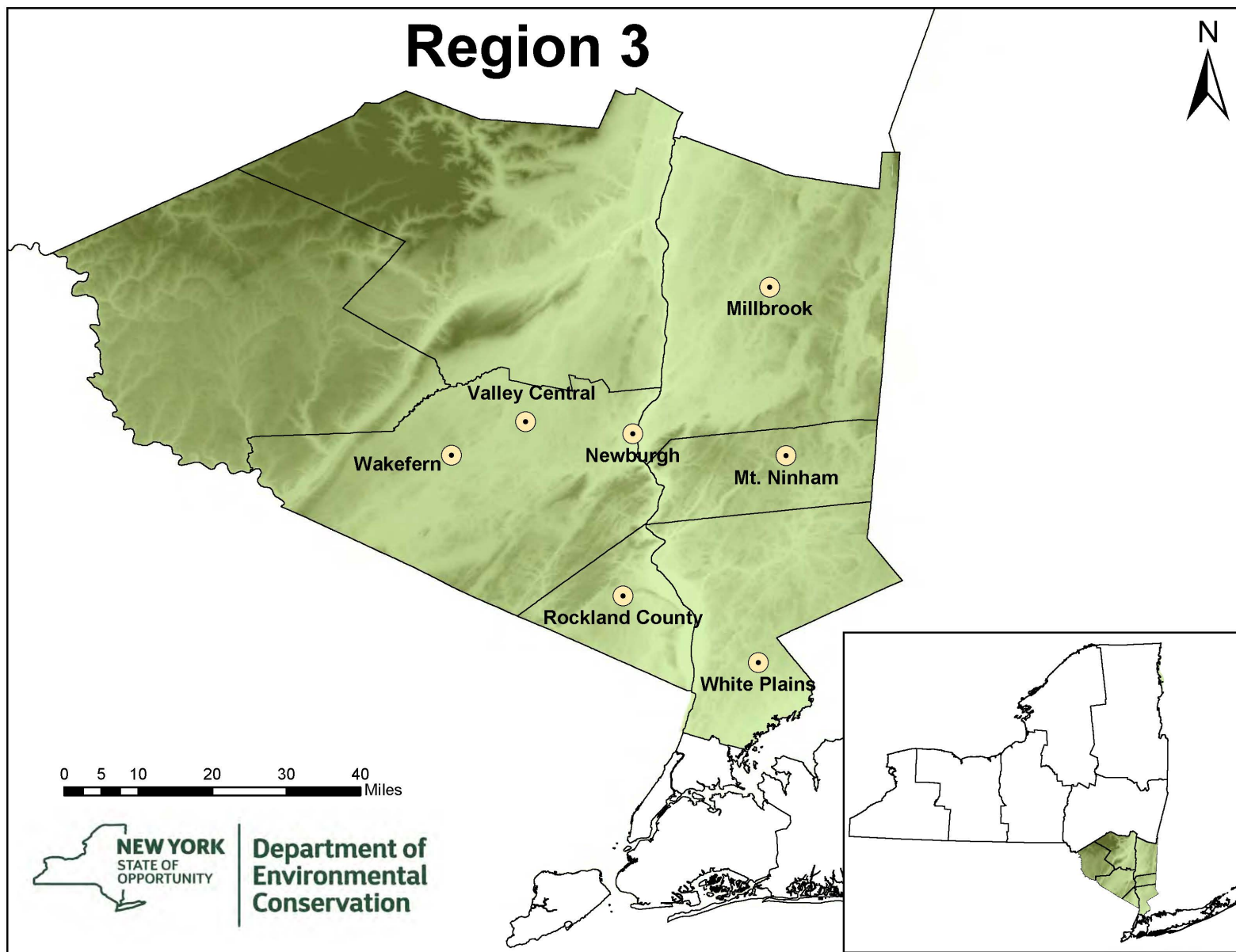
Parameter: 85128

### Comparison Between NYS Ambient Air Quality and Ambient Air Quality Standards for Calendar Year 2020

		24-Hour Concentrations - µg/m <sup>3</sup>								THREE MONTH ROLLING AVERAGES		
				Maximum		2nd Max.		3rd Max.		Highest Values, µg/m <sup>3</sup>		
Station	Site No.	Total Obs.	% Avail	Value	Date	Value	Date	Value	Date	2018	2019	2020
IS 52	36-005-0110	33	54	.0073	09/24	.0070	12/11	.0055	01/22	0.0033	0.0027	.0027

(Annual Means in parentheses are based on less than 75% available data)

\*New York and Federal Ambient Air Quality Standard + Denotes a contravention of NYS/Federal AAQS



(Annual Means in parentheses are based on less than 75% available data)

\*New York and Federal Ambient Air Quality Standard + Denotes a contravention of NYS/Federal AAQS

**SULFUR DIOXIDE** - Continuous Pulsed Fluorescence

Parameter: 42401

**Annual Averages 2010 through 2020**Annual Arithmetic Mean (ppb) - Primary Standard  
(12-month average not to exceed 30 PPB\* <sup>(4)</sup>)

Station	Site No.	2010	2011	2012	2013	2014	2015	2016	2017	2018	2019	2020
Mt. Ninham	36-079-0005	0.8	0.86	0.73	0.72	0.63	0.59	0.23	0.22	0.11	0.13	0.12
Millbrook	36-027-0007	xx	1.15	1.42	2.45	0.65	0.81	0.18	0.16	0.18	0.23	0.1
Belleayre Mtn.	36-111-1005	0.5	0.52	0.31	xx	xx	xx	xx	xx	xx	xx	xx

Sampling was suspended at 5565-03 in 2013

**Comparison Between NYS Ambient Air Quality and Ambient Air Quality Standards for Calendar Year 2020**

		One Hour Averages					
		average of 99 <sup>th</sup> percentile for last 3 years not to exceed 75 PPB *					
		Observations		99 <sup>th</sup> Percentile, PPB			
Station	Site No.	Total Obs.	% Avail	2018	2019	2020	3-yr Avg.
Mt. Ninham	36-079-0005	8,390	96	3.4	1.5	1.1	2.0
Millbrook	36-027-0007	8,606	98	3.4	1.6	1.2	2.1

(Annual Means in parentheses are based on less than 75% available data)

\*New York and Federal Ambient Air Quality Standard + Denotes a contravention of NYS/Federal AAQS

## INHALABLE PARTICULATES (PM<sub>2.5</sub>)

### Comparison Between NYS Ambient Air Quality and Ambient Air Quality Standards for Calendar Year 2020

(Average of last 3 years= annual means not to exceed 12 µg/m<sup>3</sup> \*;  
and average of 98<sup>th</sup> percentile for last 3 years not to exceed 35 µg/m<sup>3</sup> \*, *changed* from 65 µg/m<sup>3</sup> on 12/17/06)

Station	EPA Param Code	EPA Method Code	Site No.	Total Obs.	Maximum Values, µg/m <sup>3</sup>			98th Percentile, µg/m <sup>3</sup>				Quarterly Averages, 2020				Annual Mean, µg/m <sup>3</sup>			
					1 <sup>st</sup>	2 <sup>nd</sup>	3 <sup>rd</sup>	2018	2019	2020	3-yr Avg.	1st	2nd	3rd	4th	2018	2019	2020	3-yr Avg.
Newburgh (F)	88101	145	36-071-0002	87	26.1 5-Jul	21.5 20-Dec	21.5 8-Nov	16.2	14.5	21.5	17.4	5.7	6.4	7.0	6.1	6.4	5.8	6.3	6.2
Newburgh (C)	88502	702	36-071-0002	366	26.1 5-Jul	25.4 5-Jul	23.7 8-Nov	17.2	14.8	16.7	16.2	7.3	3.6	5.1	6.7	5.9	5.8	5.7	5.8
Rockland Co. (C)	88502	702	36-087-0005	366	25.4 5-Jul	16.9 9-Nov	16.0 20-Dec	16.4	13.5	13.7	14.5	6.4	3.1	4.7	5.8	5.5	5.2	5.0	5.2
White Plains (C)	88502	702	36-119-2004	360	21.1 5-Jul	19.1 7-Nov	16.5 8-Nov	15.2	12.3	13.5	13.6	6.5	3.1	4.4	5.9	5.3	5.0	5.0	5.1

(F) = Federal Reference Method or Federal Equivalent Method; Parameter Code: 88101

(C) = Continuous, used for AQI calculations. Values based on 24-hour averages of 1-hour values. Parameter Code 88502

(Annual Means in parentheses are based on less than 75% available data)

\*New York and Federal Ambient Air Quality Standard + Denotes a contravention of NYS/Federal AAQS

**OZONE** - Continuous UV Light Absorption

Parameter: 44201

**Comparison Between NYS Ambient Air Quality and Ambient Air Quality Standards for Calendar Year 2020**

		8-hr Running Average Begin Hour							4th Highest Daily Maximum 8-Hour Average-			
		Observations			Daily Highest Values, PPM				Not to exceed an avg of 0.070 ppm during the last 3 years			
Station	Site No.	Total Obs.	% Avail	Days >.070 PPM	1st	2nd	3rd	4th	2018	2019	2020	Avg.
Valley Central	36-071-5001	235	96	0	0.062 4-Jul	0.061 2-Aug	0.06 5-Jul	0.058 30-Mar	0.064 17-May	0.058 30-Mar	0.059 9-Jul	0.060
Rockland County	36-087-0005	240	98	0	0.074 4-Jul	0.070 5-Jul	0.066 16-Jul	0.066 16-Jul	0.066 18-May	0.066 13-Apr	0.061 1-Jun	0.064
White Plains	36-119-2004	240	98	1	0.072 30-Jul	0.070 16-Jul	0.070 29-Jul	0.069 22-Sep	0.072 10-Jun	0.078 28-Jul	0.069 22-Sep	0.073
Millbrook	36-027-0007	242	99	0	0.067 11-Jul	0.064 5-Jun	0.063 22-Sep	0.061 30-Jul	0.063 10-Apr	0.065 10-Jul	0.061 30-Jul	0.063
Mt. Ninham	36-079-0005	229	94	0	0.071 22-Sep	0.067 5-Jun	0.064 16-Jul	0.062 11-Jul	0.067 18-May	0.067 10-Jul	0.062 11-Jul	0.065

(Annual Means in parentheses are based on less than 75% available data)

\*New York and Federal Ambient Air Quality Standard + Denotes a contravention of NYS/Federal AAQS



## LEAD - Low Volume Air Samplers

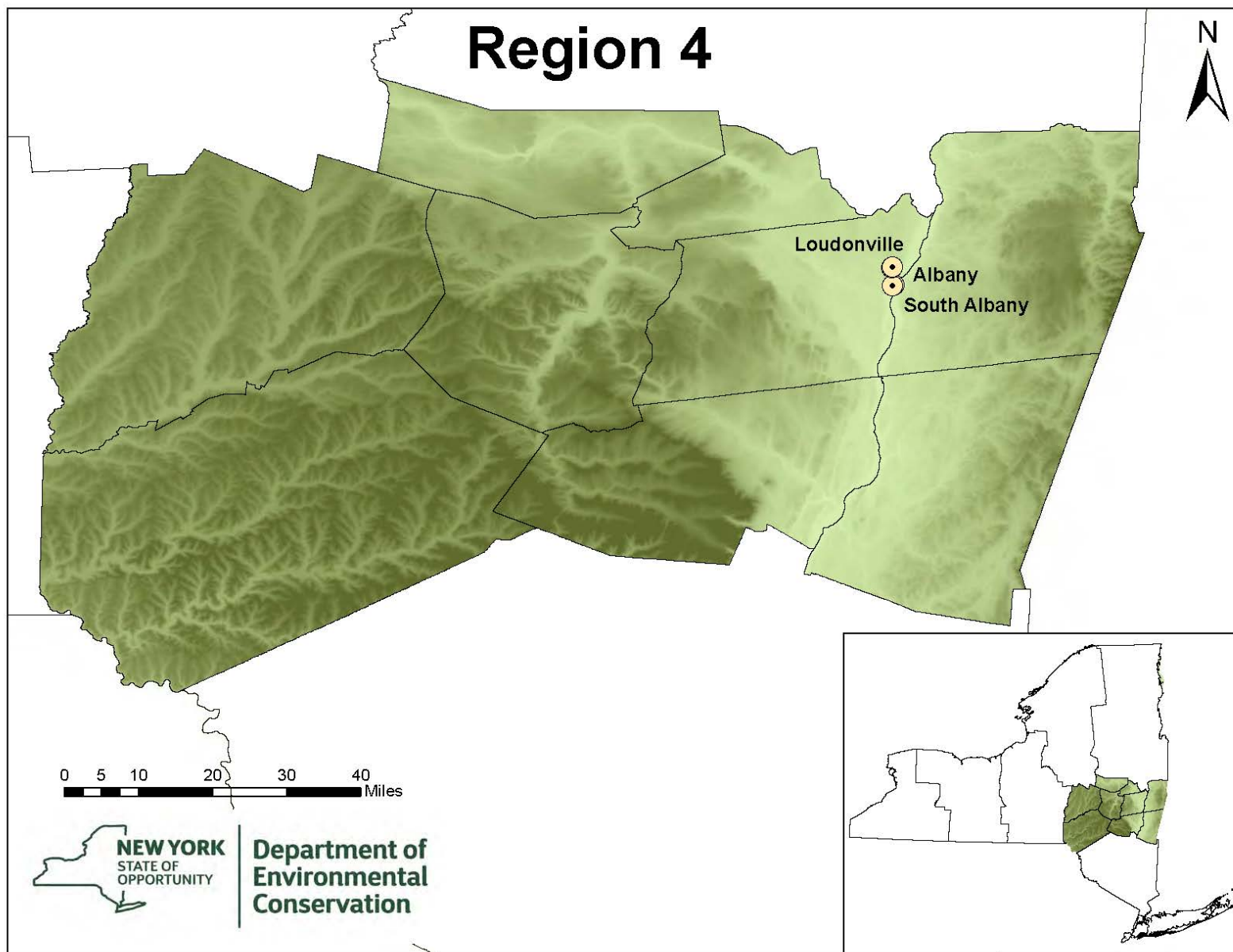
Parameter: 14128

### Comparison Between NYS Ambient Air Quality and Ambient Air Quality Standards for Calendar Year 2020

		24-Hour Concentrations - $\mu\text{g}/\text{m}^3$								THREE MONTH ROLLING AVERAGES		
				Maximum		2nd Max.		3rd Max.		Highest Values, $\mu\text{g}/\text{m}^3$		
Station	Site No.	Total Obs.	% Avail	Value	Date	Value	Date	Value	Date	2018	2019	2020
Wallkill	36-071-3002	92	75	.0839	07/02	.0432	07/29	.0241	09/15	0.01	0.01	0.01

(Annual Means in parentheses are based on less than 75% available data)

\*New York and Federal Ambient Air Quality Standard + Denotes a contravention of NYS/Federal AAQS



(Annual Means in parentheses are based on less than 75% available data)

\*New York and Federal Ambient Air Quality Standard + Denotes a contravention of NYS/Federal AAQS

**SULFUR DIOXIDE** - Continuous Pulsed Fluorescence

Parameter: 42401

**Annual Averages 2010 through 2020**

Annual Arithmetic Mean (ppb) - Primary Standard

(12-month average not to exceed 30 PPB \* <sup>(4)</sup>)

Station	Site No.	2010	2011	2012	2013	2014	2015	2016	2017	2018	2019	2020
Loudonville	36-001-0012	2.33	1.92	0.97	2.03	1.61	1.3	0.36	0.21	0.03	0.17	0.2
Schenectady	36-093-0003	1.92	2.18	xx	xx	xx	xx	xx	xx	xx	xx	xx
Grafton State Park	36-083-0004	1.12	1.13	0.76	xx	xx	xx	xx	xx	xx	xx	xx

Sampling at 4601-05 and 4153-04 was terminated on 06/30/11 and 12/31/12, respectively.

**Comparison Between NYS Ambient Air Quality and Ambient Air Quality Standards for Calendar Year 2020**

		One Hour Averages					
		average of 99 <sup>th</sup> percentile for last 3 years not to exceed 75 PPB *					
		Observations		99 <sup>th</sup> Percentile, PPB			
Station	Site No.	Total Obs.	% Avail	2018	2019	2020	3-yr Avg.
Loudonville	36-001-0012	8,641	99	2.1	3.4	1.9	2.47

(Annual Means in parentheses are based on less than 75% available data)

\*New York and Federal Ambient Air Quality Standard + Denotes a contravention of NYS/Federal AAQS

## INHALABLE PARTICULATES (PM<sub>2.5</sub>)

### Comparison Between NYS Ambient Air Quality and Ambient Air Quality Standards for Calendar Year 2020

(Average of last 3 years annual means not to exceed 12 µg/m<sup>3</sup> \*and average of 98<sup>th</sup> percentile for last 3 years not to exceed 35 µg/m<sup>3</sup> \*,)

Station	EPA Param Code	EPA Method Code	Site No.	Total Obs.	Maximum Values, µg/m <sup>3</sup>			98th Percentile, µg/m <sup>3</sup>				Quarterly Averages, 2020				Annual Mean, µg/m <sup>3</sup>			
					1 <sup>st</sup>	2 <sup>nd</sup>	3 <sup>rd</sup>	2018	2019	2020	3-yr Avg.	1st	2nd	3rd	4th	2018	2019	2020	3-yr Avg.
Albany Co. HD (FRM)	88101	145	36-001-0005	248	23.2 8-Nov	21.7 20-Dec	21.7 20-Dec	18.6	17.7	22.8	19.7	5.9	7.0	6.2	5.9	6.4	5.8	8.7	6.1
Albany Co. HD (FEM)	88101	236	36-001-0005	363	52.5 8-Nov	43.2 9-Nov	37.4 7-Nov	18.2	18.8	22.6	19.9	8.0	6.6	9.1	11.2	7.9	7.5	8.7	8.1
Loudonville (F)	88101	145	36-001-0012	117	20.2 20-Dec	13.4 31-Jan	12.2 11-Dec	16.2	13.4	12.2	13.9	4.9	4.6	5.8	4.5	5.8	5.1	4.9	5.3

(F) = Federal Reference Method or Federal Equivalent Method: Parameter Code: 88101

(C) = Continuous, used for AQI calculations. Values based on 24-hour averages of 1-hour values. Parameter Code 88502

(Annual Means in parentheses are based on less than 75% available data)

\*New York and Federal Ambient Air Quality Standard + Denotes a contravention of NYS/Federal AAQS

## OZONE - Continuous UV Light Absorption

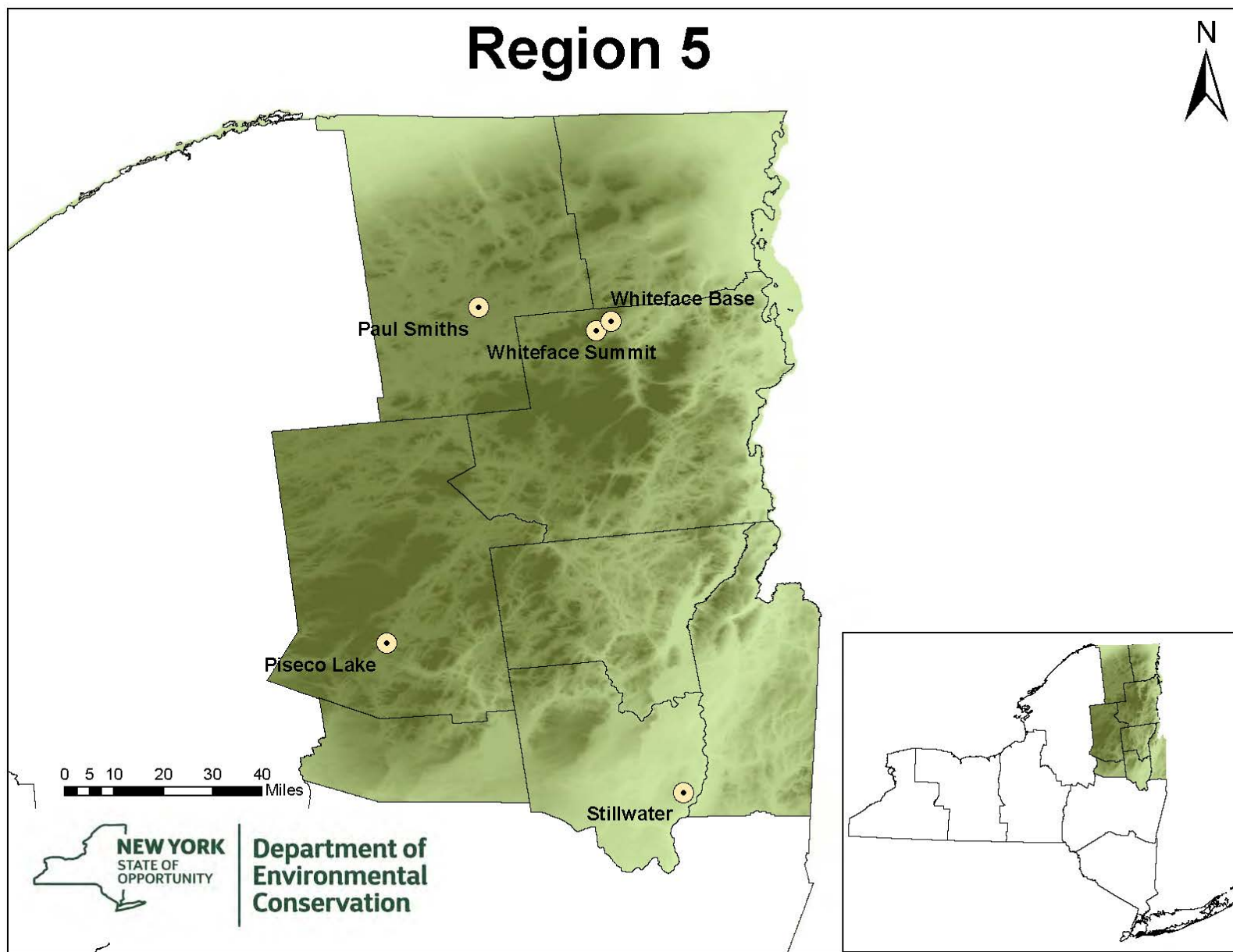
Parameter: 44201

### Comparison Between NYS Ambient Air Quality and Ambient Air Quality Standards for Calendar Year 2020

		8-hr Running Average Begin Hour							4th Highest Daily Maximum 8-Hour Average-			
		Observations			Daily Highest Values, PPM				Not to exceed an avg of 0.070 ppm during the last 3 years			
Station	Site No.	Total Obs.	% Avail	Days >.070 PPM	1st	2nd	3rd	4th	2018	2019	2020	Avg.
Loudonville	36-001-0012	241	99	0	0.062 5-Jul	0.059 5-Jun	0.059 5-Jun	0.056 19-May	0.064 11-Apr	0.056 19-May	0.053 26-May	0.057

(Annual Means in parentheses are based on less than 75% available data)

\*New York and Federal Ambient Air Quality Standard + Denotes a contravention of NYS/Federal AAQS



(Annual Means in parentheses are based on less than 75% available data)

\*New York and Federal Ambient Air Quality Standard + Denotes a contravention of NYS/Federal AAQS

## SULFUR DIOXIDE - Continuous Pulsed Fluorescence

Parameter: 42401

### Annual Averages 2010 through 2020

Annual Arithmetic Mean (ppb) - Primary Standard  
(12-month average not to exceed 30 PPB \* <sup>(4)</sup>)

Station	Site No.	2010	2011	2012	2013	2014	2015	2016	2017	2018	2019	2020
Whiteface Mtn. - Lodge	36-031-0003	0.72	0.73	0.67	0.36	0.38	0.47	0.26	0.18	0.18	0.13	0.14
Paul Smiths College	36-033-0004	0.57	0.67	0.5	0.52	0.6	0.32	0.2	0.28	0.11	0.17	xx
Piseco Lake	36-041-0005	0.34	0.32	0.14	0.17	0.21	0.16	0.05	0.03	0.03	0.05	0.03

### Comparison Between NYS Ambient Air Quality and Ambient Air Quality Standards for Calendar Year 2020

		One Hour Averages					
		average of 99 <sup>th</sup> percentile for last 3 years not to exceed 75 PPB *					
		Observations		99 <sup>th</sup> Percentile, PPB			
Station	Site No.	Total Obs.	% Avail	2018	2019	2020	3-yr Avg.
Whiteface Mtn. - Lodge	36-031-0003	8,482	97	1	0.9	1.1	1.00
Paul Smiths College	36-033-0004	xx	xx	1.1	1.1	xx	1.10
Piseco Lake	36-041-0005	8,503	97	1	0.6	0.7	0.77

(Annual Means in parentheses are based on less than 75% available data)

\*New York and Federal Ambient Air Quality Standard + Denotes a contravention of NYS/Federal AAQS

## INHALABLE PARTICULATES (PM<sub>2.5</sub>)

### Comparison Between NYS Ambient Air Quality and Ambient Air Quality Standards for Calendar Year 2020

(Average of last 3 years= annual means not to exceed 12 µg/m<sup>3</sup> \*;and average of 98<sup>th</sup> percentile for last 3 years not to exceed 35 µg/m<sup>3</sup> \*)

Station	EPA Param Code	EPA Method Code	Site No.	Total Obs.	Maximum Values, µg/m <sup>3</sup>			98th Percentile, µg/m <sup>3</sup>				Quarterly Averages, 2020				Annual Mean, µg/m <sup>3</sup>			
					1 <sup>st</sup>	2 <sup>nd</sup>	3 <sup>rd</sup>	2018	2019	2020	3-yr Avg.	1st	2nd	3rd	4th	2018	2019	2020	3-yr Avg.
Whiteface Base (F)	88101	145	36-031-0003	29	9.2 8-Jul	8.9 2-Jul	7.5 27-May	12.5	8.7	8.9	18	2.2	3.2	4.9	2.7	3.4	2.8	3.2	3.1
Whiteface Base (C)	88502	702	36-031-0003	360	12.3 26-Sep	11.2 7-Nov	10.5 10-Oct	10.4	8.3	9.0	9.2	2.8	3.3	4.0	3.2	3.3	3.0	3.3	3.2

(F) = Federal Reference Method or Federal Equivalent Method: Parameter Code: 88101

(C) = Continuous, used for AQI calculations. Values based on 24-hour averages of 1-hour values. Parameter Code 88502

(Annual Means in parentheses are based on less than 75% available data)

\*New York and Federal Ambient Air Quality Standard + Denotes a contravention of NYS/Federal AAQS



## OZONE - Continuous UV Light Absorption

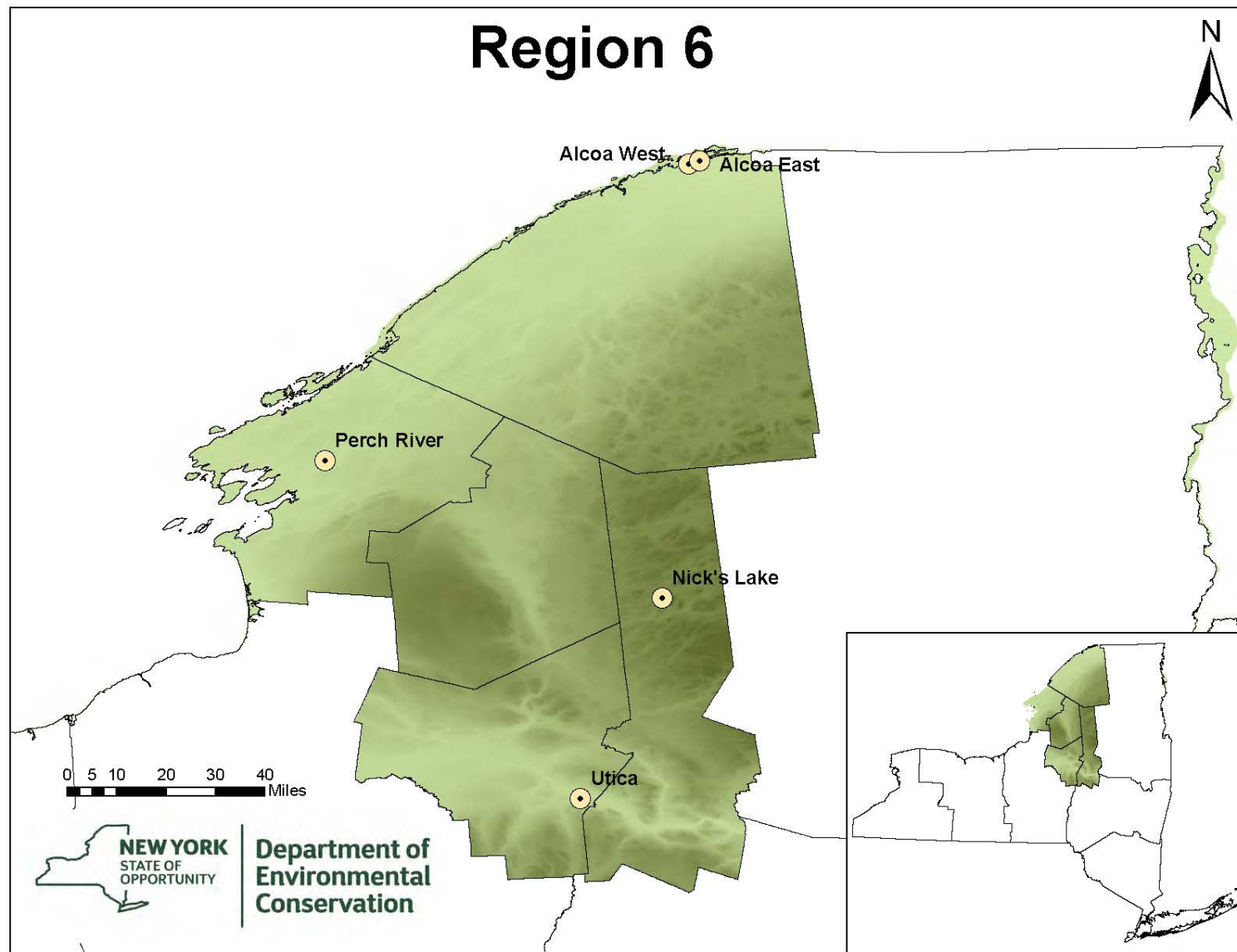
Parameter: 44201

### Comparison Between NYS Ambient Air Quality and Ambient Air Quality Standards for Calendar Year 2020

		8-hr Running Average Begin Hour							4th Highest Daily Maximum 8-Hour Average-			
		Observations			Daily Highest Values, PPM				Not to exceed an avg of 0.070 ppm during the last 3 years			
Station	Site No.	Total Obs.	% Avail	Days >.070 PPM	1st	2nd	3rd	4th	2018	2019	2020	Avg.
Stillwater	36-091-0004	231	95	0	0.057 30-Mar	0.057 30-Mar	0.056 28-Jun	0.054 14-Mar	0.06 17-May	0.067 9-May	0.054 14-Mar	0.060
Whiteface Mtn. Summit	36-031-0002	236	97	0	0.064 5-Jun	0.063 30-Mar	0.062 29-Jun	0.062 29-Jun	0.067 16-Mar	0.069 1-May	0.062 29-Jun	0.066
Whiteface Mtn. Base	36-031-0003	239	98	0	0.061 30-Mar	0.057 28-Mar	0.057 28-Mar	0.057 28-Mar	0.06 15-Apr	0.066 2-May	0.057 28-Mar	0.061
Piseco Lake	36-041-0005	240	98	0	0.056 28-Jun	0.055 29-Jun	0.054 1-Jun	0.054 1-Jun	0.064 10-Apr	0.063 24-Apr	0.054 1-Jun	0.060
Mt. Ninham	36-079-0005	229	94	0	0.071 22-Sep	0.067 5-Jun	0.064 16-Jul	0.062 11-Jul	0.067 18-May	0.067 10-Jul	0.062 11-Jul	0.065

(Annual Means in parentheses are based on less than 75% available data)

\*New York and Federal Ambient Air Quality Standard + Denotes a contravention of NYS/Federal AAQS



(Annual Means in parentheses are based on less than 75% available data)

\*New York and Federal Ambient Air Quality Standard + Denotes a contravention of NYS/Federal AAQS

**SULFUR DIOXIDE** - Continuous Pulsed Fluorescence

Parameter: 42401

**Annual Averages 2010 through 2020**Annual Arithmetic Mean (ppb) - Primary Standard  
(12-month average not to exceed 30 PPB \* <sup>(4)</sup>)

Station	Site No.	2010	2011	2012	2013	2014	2015	2016	2017	2018	2019	2020
Alcoa West	36-089-0004	xx	xx	xx	xx	xx	xx	xx	5.16	4	4.01	3.75
Alcoa East	36-089-0005	xx	xx	xx	xx	xx	xx	xx	1.62	1.3	1.36	1.57
Nick's Lake*	36-043-0005	0.54	0.48	0.65	0.6	0.67	0.52	0.2	0.16	0.12	0.28	xx

\*36-043-0005 Closed in 2019 due to low concentrations and issues at the site.

**Comparison Between NYS Ambient Air Quality and Ambient Air Quality Standards for Calendar Year 2020**

		One Hour Averages average of 99 <sup>th</sup> percentile for last 3 years not to exceed 75 PPB *					
		Observations		99 <sup>th</sup> Percentile, PPB			
		Total Obs.	% Avail	2018	2019	2020	3-yr Avg.
Station	Site No.						
Alcoa West*	36-089-0004	8,714	99	86.5	82.0	88.7	85.7
Alcoa East*	36-089-0005	8,749	100	40.6	42.0	42.2	41.6
Nick's Lake	36-043-0005	xx	xx	1.1	2.5	xx	1.8

\*Alcoa East and Alcoa West are source oriented monitors established in 2017 to comply with the Data Requirements Rule for the 2010 1-Hour Sulfur Dioxide Primary National Ambient Air Quality Standard (80 FR 51052) that requires that NYSDEC provide data to characterize the 1-hour ambient air concentration of SO<sub>2</sub> in areas near the Alcoa Massena West Aluminum Plant.

(Annual Means in parentheses are based on less than 75% available data)

\*New York and Federal Ambient Air Quality Standard + Denotes a contravention of NYS/Federal AAQS

## INHALABLE PARTICULATES (PM<sub>2.5</sub>)

### Comparison Between NYS Ambient Air Quality and Ambient Air Quality Standards for Calendar Year 2020

(Average of last 3 years= annual means not to exceed 12 µg/m<sup>3</sup> \*;  
and average of 98<sup>th</sup> percentile for last 3 years not to exceed 35 µg/m<sup>3</sup> \*, *changed* from 65 µg/m<sup>3</sup> on 12/17/06)

Station	EPA Param Code	Method Code	Site No.	Total Obs.	Maximum Values, µg/m <sup>3</sup>			98th Percentile, µg/m <sup>3</sup>				Quarterly Averages, 2020				Annual Mean, µg/m <sup>3</sup>			
					1 <sup>st</sup>	2 <sup>nd</sup>	3 <sup>rd</sup>	2018	2019	2020	3-yr Avg.	1st	2nd	3rd	4th	2018	2019	2020	3-yr Avg.
Utica (C)	88502	702	36-065-2001	358	25.0 27-Aug	20.0 7-Nov	19.4 8-Nov	14.1	12.6	14.2	13.6	6.2	2.8	4.0	5.8	5.1	4.6	4.6	4.8

(F) = Federal Reference Method or Federal Equivalent Method: Parameter Code: 88101

(C) = Continuous, used for AQI calculations. Values based on 24-hour averages of 1-hour values. Parameter Code 88502

(Annual Means in parentheses are based on less than 75% available data)

\*New York and Federal Ambient Air Quality Standard + Denotes a contravention of NYS/Federal AAQS

**OZONE** - Continuous UV Light Absorption

Parameter: 44201

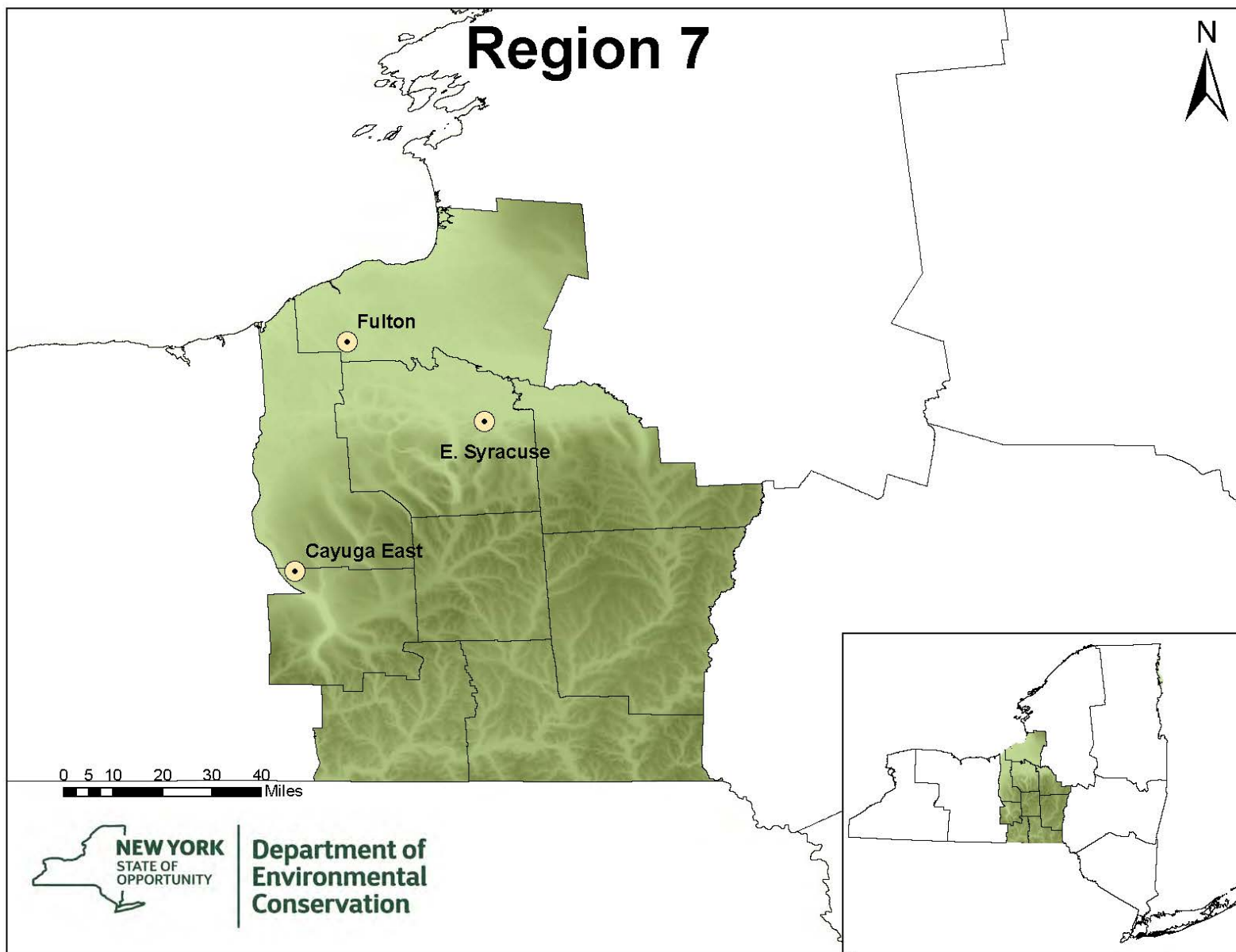
**Comparison Between NYS Ambient Air Quality and Ambient Air Quality Standards for Calendar Year 2020**

		8-hr Running Average Begin Hour							4th Highest Daily Maximum 8-Hour Average-  Not to exceed an avg of 0.070 ppm during the last 3 years			
		Observations			Daily Highest Values, PPM							
Station	Site No.	Total Obs.	% Avail	Days >.070 PPM	1st	2nd	3rd	4th	2018	2019	2020	Avg.
Nick’s Lake	36-043-0005	xx	xx	0	xx xx	xx xx	xx xx	xx xx	0.057 10-Jun	0.048 1-Jun	xx xx	(0.052)
Perch River	36-045-0002	241	99	0	0.067 18-Jul	0.061 26-Jul	0.061 5-Jun	0.06 9-Jul	0.068 2-May	0.056 27-Jul	0.06 9-Jul	0.061

Sampling stopped at 2167-03 in December 31<sup>st</sup> 2019 due to no power being available at the site

(Annual Means in parentheses are based on less than 75% available data)

\*New York and Federal Ambient Air Quality Standard + Denotes a contravention of NYS/Federal AAQS



(Annual Means in parentheses are based on less than 75% available data)

\*New York and Federal Ambient Air Quality Standard + Denotes a contravention of NYS/Federal AAQS

## SULFUR DIOXIDE - Continuous Pulsed Fluorescence

Parameter: 42401

### Annual Averages 2010 through 2020

Annual Arithmetic Mean (ppb) - Primary Standard  
(12-month average not to exceed 30 PPB \* <sup>(4)</sup>)

Station	Site No.	2010	2011	2012	2013	2014	2015	2016	2017	2018	2019	2020
Camp Georgetown	36-053-0006	1.09	0.52	0.34	xx	xx	xx	xx	xx	xx	xx	xx
Cayuga East*	36-109-0002	xx	xx	xx	xx	xx	xx	xx	0.34	0.09	-0.03	xx
East Syracuse	36-067-1015	0.92	0.88	0.54	0.61	0.70	0.60	0.40	0.35	0.26	0.12	0.16

Sampling at 2655-01 was suspended on 04/02/2012

\*Cayuga East is a source-oriented monitor established in 2017 to comply with the Data Requirements Rule for the 2010 1-Hour Sulfur Dioxide Primary National Ambient Air Quality Standard (80 FR 51052) that requires that NYSDEC provide data to characterize the 1-hour ambient air concentration of SO<sub>2</sub> in areas near the Cayuga Operating Company Power Plant.

### Comparison Between NYS Ambient Air Quality and Ambient Air Quality Standards for Calendar Year 2020

		One Hour Averages average of 99 <sup>th</sup> percentile for last 3 years not to exceed 75 PPB *					
		Observations		99 <sup>th</sup> Percentile, PPB			
		Total Obs.	% Avail	2018	2019	2020	3-yr Avg.
Station	Site No.						
Cayuga East	36-109-0002	xx	xx	51.8	20.8	xx	xx
East Syracuse	36-067-1015	8,539	97	2.2	0.9	0.9	1.33

(Annual Means in parentheses are based on less than 75% available data)

\*New York and Federal Ambient Air Quality Standard + Denotes a contravention of NYS/Federal AAQS

## INHALABLE PARTICULATES (PM<sub>2.5</sub>)

### Comparison Between NYS Ambient Air Quality and Ambient Air Quality Standards for Calendar Year 2020

(Average of last 3 years= annual means not to exceed 15 µg/m<sup>3</sup>\*;  
and average of 98<sup>th</sup> percentile for last 3 years not to exceed 35 µg/m<sup>3</sup>\*, *changed* from 65 µg/m<sup>3</sup> on 12/17/06)

Station	EPA Param Code	EPA Method Code	Site No.	Total Obs.	Maximum Values, µg/m <sup>3</sup>			98th Percentile, µg/m <sup>3</sup>				Quarterly Averages, 2020				Annual Mean, µg/m <sup>3</sup>			
					1 <sup>st</sup>	2 <sup>nd</sup>	3 <sup>rd</sup>	2018	2019	2020	3-yr Avg.	1st	2nd	3rd	4th	2018	2019	2020	3-yr Avg.
East Syracuse (FRM)	88101	145	36-067-1015	210	13.0 28-Jan	8.3 23-Jun	8.2 9-Feb	16.1	14.8	14.2	18.0	5.4	4.7	5.8	4.5	5.9	5.5	4.4	5.3
East Syracuse (FEM)	88101	236	36-067-1015	364	21.7 25-Feb	20.8 1-Feb	20.5 26-Feb	16.0	13.9	14.4	14.8	7.7	5.5	6.5	6.2	4.7	6.5	6.5	5.9

(F) = Federal Reference Method or Federal Equivalent Method: Parameter Code: 88101

(C) = Continuous, used for AQI calculations. Values based on 24-hour averages of 1-hour values. Parameter Code 88502

(Annual Means in parentheses are based on less than 75% available data)

\*New York and Federal Ambient Air Quality Standard + Denotes a contravention of NYS/Federal AAQS



## OZONE - Continuous UV Light Absorption

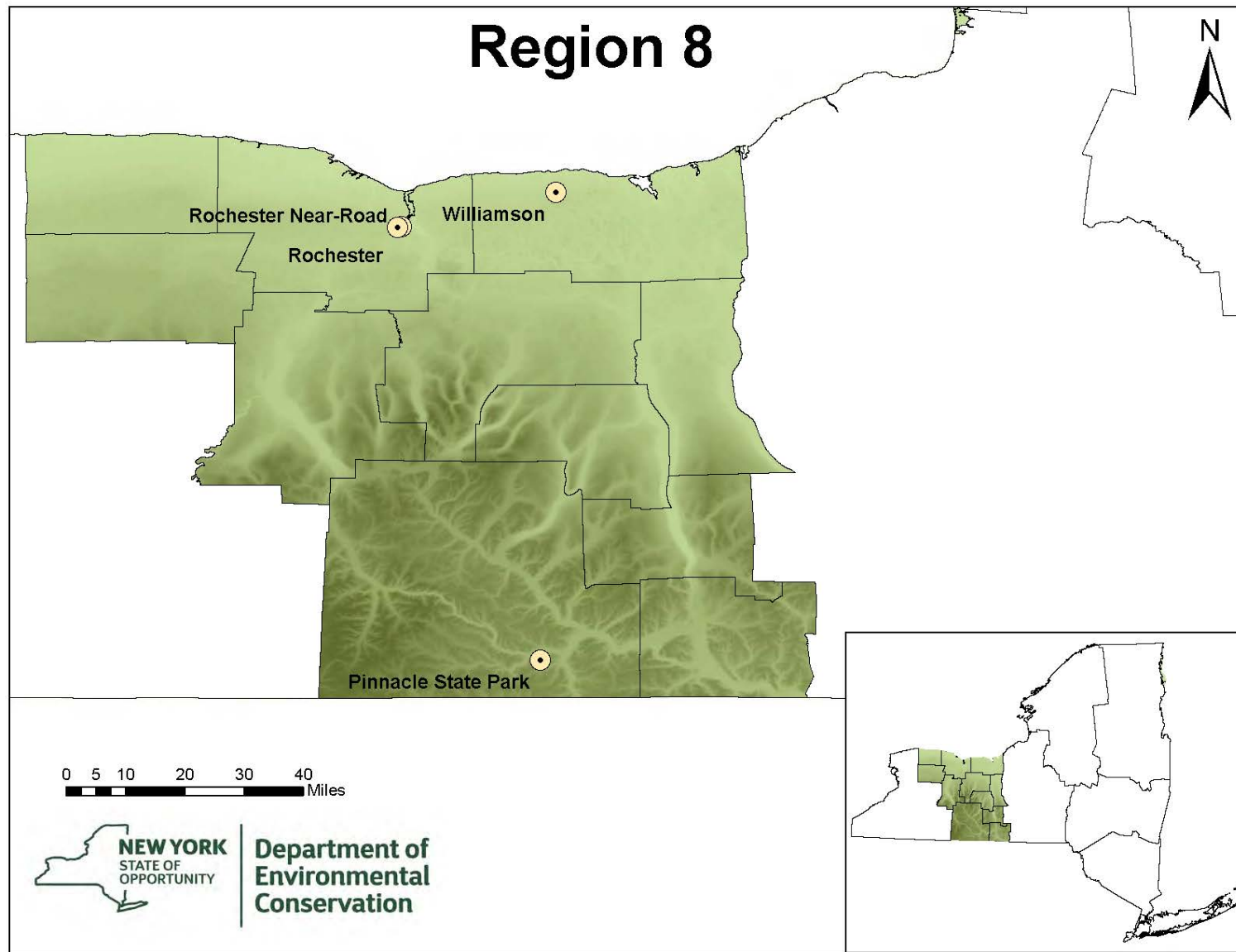
Parameter:44201

### Comparison Between NYS Ambient Air Quality and Ambient Air Quality Standards for Calendar Year 2020

		8-hr Running Average Begin Hour							4th Highest Daily Maximum 8-Hour Average-			
		Observations			Daily Highest Values, PPM				Not to exceed an avg of 0.070 ppm during the last 3 years			
Station	Site No.	Total Obs.	% Avail	Days >.070 PPM	1st	2nd	3rd	4th	2018	2019	2020	Avg.
East Syracuse	36-067-1015	243	100	0	0.062 5-Jun	0.061 9-Jun	0.06 25-Sep	0.058 26-May	0.066 2-May	0.058 14-Mar	0.058 26-May	0.060
Fulton/Granby	36-075-0003	239	98	0	0.057 9-Jun	0.056 25-Sep	0.056 4-Jun	0.056 25-Sep	0.067 14-Jul	0.056 29-Jun	0.056 4-Jun	0.059

(Annual Means in parentheses are based on less than 75% available data)

\*New York and Federal Ambient Air Quality Standard + Denotes a contravention of NYS/Federal AAQS



(Annual Means in parentheses are based on less than 75% available data)

\*New York and Federal Ambient Air Quality Standard + Denotes a contravention of NYS/Federal AAQS

## SULFUR DIOXIDE - Continuous Pulsed Fluorescence

Parameter: 42401

### Annual Averages 2010 through 2020

Annual Arithmetic Mean (ppb) - Primary Standard  
(12-month average not to exceed 30 PPB \* <sup>(4)</sup>)

Station	Site No.	2010	2011	2012	2013	2014	2015	2016	2017	2018	2019	2020
Elmira	36-015-0003	2.08	1.65	1.48	xx	xx	xx	xx	xx	xx	xx	xx
Rochester	36-055-1007	2.19	1.15	0.99	0.91	0.96	0.79	0.68	0.49	0.23	0.17	0.11
Cayuga West*	36-099-0002	xx	xx	xx	xx	xx	xx	xx	0.11	0.09	0.23	xx
Pinnacle	36-101-0003	0.63	0.71	0.39	0.39	0.45	0.33	0.21	0.13	0.13	0.07	0.02

Sampling was suspended at 0701-05 in 2013

\*Cayuga West is a source-oriented monitor established in 2017 to comply with the Data Requirements Rule for the 2010 1-Hour Sulfur Dioxide Primary National Ambient Air Quality Standard (80 FR 51052) that requires that NYSDEC provide data to characterize the 1-hour ambient air concentration of SO<sub>2</sub> in areas near the Cayuga Operating Company Power Plant.

### Comparison Between NYS Ambient Air Quality and Ambient Air Quality Standards for Calendar Year 2020

		One Hour Averages					
		average of 99 <sup>th</sup> percentile for last 3 years not to exceed 75 PPB *					
		Observations		99 <sup>th</sup> Percentile, PPB			
Station	Site No.	Total Obs.	% Avail	2018	2019	2020	3-yr Avg.
Rochester	36-055-1007	8,642	99	7.5	2	1.5	3.67
Cayuga West*	36-099-0002	xx	xx	2.4	1.9	xx	xx
Pinnacle	36-101-0003	7,992	91	2	1.8	1.1	1.63

(Annual Means in parentheses are based on less than 75% available data)

\*New York and Federal Ambient Air Quality Standard + Denotes a contravention of NYS/Federal AAQS

## INHALABLE PARTICULATES (PM<sub>10</sub>)

Parameter Code:81102

### Comparison Between NYS Ambient Air Quality and Ambient Air Quality Standards for Calendar Year 2020

		24-Hour Concentrations - µg/m³							# of Days > 150 µg/m³ - Not to exceed an expected avg of one per year during the last 3 years *						
			Maximum		2nd Max.		3rd Max.		2018		2019		2020		
Station	Site No.	Total Obs.	Value	Date	Value	Date	Value	Date	Mea	Est	Mea	Est	Mea	Est	Exp. Avg.
Rochester	36-055-1007	60	37.74	22-Jan	25.0	11-Dec	25.0	24-Sep	0	0	0	0	0	0	0

(Annual Means in parentheses are based on less than 75% available data)

\*New York and Federal Ambient Air Quality Standard + Denotes a contravention of NYS/Federal AAQS

## INHALABLE PARTICULATES (PM<sub>2.5</sub>)

### Comparison Between NYS Ambient Air Quality and Ambient Air Quality Standards for Calendar Year 2020

(Average of last 3 years annual means not to exceed 12 µg/m<sup>3</sup> \*; and average of 98<sup>th</sup> percentile for last 3 years not to exceed 35 µg/m<sup>3</sup>)

Station	EPA Param Code	Method Code	Site No.	Total Obs.	Maximum Values, µg/m <sup>3</sup>			98th Percentile, µg/m <sup>3</sup>				Quarterly Averages, 2020				Annual Mean, µg/m <sup>3</sup>			
					1 <sup>st</sup>	2 <sup>nd</sup>	3 <sup>rd</sup>	2018	2019	2020	3-yr Avg.	1st	2nd	3rd	4th	2018	2019	2020	3-yr Avg.
Rochester Near Road (F)	88101	145	36-055-0015	54	19.1 11-Dec	14.6 8-Nov	13.8 31-Jan	19.3	15.7	13.8	16.3	6.4	4.9	6.5	5.8	7.3	6.6	5.9	6.6
Rochester Near Road (C)	88502	702	36-055-0015	360	18.7 12-Dec	18.2 8-Nov	17.9 25-Sep	17.4	14.4	13.8	15.2	7.1	4.8	6.3	7.9	7.2	6.7	6.5	6.8
Rochester 2 (F)	88101	145	36-055-1007	239	17.7 11-Dec	17.0 8-Nov	14.2 5-Jul	18.6	16.2	15.3	16.7	5.5	5.1	6.6	5.4	6.9	6.5	5.6	6.3
Rochester 2 (C)	88101	236	36-055-1007	366	25.0 12-Dec	20.2 8-Nov	19.7 11-Dec	17.9	16.3	15.4	16.5	7.3	5.8	6.5	6.8	6.1	6.3	6.6	6.3
Pinnacle (F)	88101	145	36-101-0003	231	24.3 22-Jan	13.3 20-Dec	11.2 7-Jan	13.7	13.4	12.2	13.1	4.6	4.2	4.9	4.0	5.3	4.4	4.4	4.7
Pinnacle (C)	88101	236	36-101-0003	347	25.3 12-Dec	17.6 11-Dec	16.5 20-Dec	13.2	13.1	12.1	12.8	6.1	5.0	5.9	6.0	4.5	6.1	5.7	5.5

(F) = Federal Reference Method or Federal Equivalent Method; Parameter Code: 88101

(C) = Continuous, used for AQI calculations. Values based on 24-hour averages of 1-hour values. Parameter Code 88502

(Annual Means in parentheses are based on less than 75% available data)

\*New York and Federal Ambient Air Quality Standard + Denotes a contravention of NYS/Federal AAQS

## CARBON MONOXIDE - Continuous Gas Filter Correlation

Parameter: 42101

### Comparison Between NYS Ambient Air Quality and Ambient Air Quality Standards for Calendar Year 2020

		One-Hour Average						Running 8-Hour Average (Non-Overlapping)				
		Maximum not to exceed 35 PPM more than once per calendar year *						Maximum not to exceed 9 PPM more than once per calendar year *				
		Observations			Highest Values, PPM			Observations		Highest Values, PPM		
Station	Site No.	Total Obs.	% Avail	>35 PPM	1	2	3	Total	>9 PPM	1st	2nd	Days> 9PPM
Rochester 2	36-055-1007	8,621	98	0	1.07 9-Nov	1.06 11-Dec	1.03 12-Dec	8,533	0	0.90 12-Dec	0.90 12-Dec	0
Rochester Near-Road	36-055-0015	7,961	91	0	1.69 10-Jun	1.16 11-Jun	1.02 12-Dec	7,886	0	1.40 11-Jun	1.20 10-Jun	0
Pinnacle	36-101-0003	7,808	89	0	0.54 8-Aug	0.27 24-Jan	0.26 26-Feb	7,590	0	0.30 24-Jan	0.20 31-Dec	0

(Annual Means in parentheses are based on less than 75% available data)

\*New York and Federal Ambient Air Quality Standard + Denotes a contravention of NYS/Federal AAQS

**OZONE** - Continuous UV Light Absorption**Comparison Between NYS Ambient Air Quality and Ambient Air Quality Standards for Calendar Year 2020**

		8-hr Running Average Begin Hour							4th Highest Daily Maximum 8-Hour Average-			
		Observations			Daily Highest Values, PPM				Not to exceed an avg of 0.070 ppm during the last 3 years			
Station	Site No.	Total Obs.	% Avail	Days >.070 PPM	1st	2nd	3rd	4th	2018	2019	2020	Avg.
Rochester 2	36-055-1007	353	145	0	0.064 8-Jul	0.063 7-Jul	0.062 18-Jul	0.061 9-Jun	0.071 25-May	0.059 6-May	0.061 9-Jun	0.063
Pinnacle	36-101-0003	351	144	0	0.055 3-May	0.055 25-Sep	0.054 17-Jun	0.053 24-Sep	0.064 23-Apr	0.054 9-Mar	0.053 24-Sep	0.057
Williamson	36-117-3001	239	98	0	0.064 18-Jul	0.061 5-Jul	0.061 9-Jun	0.06 25-Sep	0.071 25-May	0.06 13-Apr	0.06 8-Jul	0.063

(Annual Means in parentheses are based on less than 75% available data)

\*New York and Federal Ambient Air Quality Standard + Denotes a contravention of NYS/Federal AAQS

## NITROGEN DIOXIDE - Continuous Chemiluminescence

Parameter: 42602

### Annual Averages 2010 through 2020

Annual Arithmetic Mean (PPB) - Primary Standard (12-month average not to exceed 53 PPB \*)

Station	Site No.	2010	2011	2012	2013	2014	2015	2016	2017	2018	2019	2020
Rochester Near-Road	36-055-0015	xx	xx	xx	xx	9.38	10.09	9.72	9.08	8.73	7.55	5.68

### Comparison Between NYS Ambient Air Quality and Ambient Air Quality Standards for Calendar Year 2020

		One-Hour Averages - average of 98th percentile for last 3 years not to exceed 75 PPB *								
		Observations		98th Percentile, PPB				Highest Values, PPB		
Station	Site No.	Total	% Avail	2017	2019	2020	3-yr avg.	1st	2nd	3rd
Rochester Near-Road	36-055-0015	7,219	82	35.8	38.9	30.0	34.9	37.4 01/23 :06	36.9 01/23 :07	35.5 01/22 :19

(Annual Means in parentheses are based on less than 75% available data)

\*New York and Federal Ambient Air Quality Standard + Denotes a contravention of NYS/Federal AAQS



## LEAD -PM<sub>10</sub> Samplers

Parameter: 85128

### Comparison Between NYS Ambient Air Quality and Ambient Air Quality Standards for Calendar Year 2020

		24-Hour Concentrations - µg/m <sup>3</sup>								THREE MONTH ROLLING AVERAGES		
				Maximum		2nd Max.		3rd Max.		Highest Values, µg/m <sup>3</sup>		
Station	Site No.	Total Obs.	% Avail	Value	Date	Value	Date	Value	Date	2018	2019	2020
Rochester	36-055-1007	58	95	.0073	09/24	.0070	12/11	.0055	01/22	0.0022	0.0017	.0026

(Annual Means in parentheses are based on less than 75% available data)

\*New York and Federal Ambient Air Quality Standard + Denotes a contravention of NYS/Federal AAQS

**SULFUR DIOXIDE** - Continuous Pulsed Fluorescence

Parameter: 42401

**Annual Averages 2010 through 2020**

Annual Arithmetic Mean (ppb) - Primary Standard

(12-month average not to exceed 30 PPB \* <sup>(4)</sup>)

Station	Site No.	2010	2011	2012	2013	2014	2015	2016	2017	2018	2019	2020
Buffalo	36-029-0005	1.50	2.01	2.72	2.41	1.49	1.04	0.49	0.35	0.40	0.40	0.34
Brookside Terrace	36-029-1014	1.83	3.43	2.11	2.82	1.52	1.02	0.77	0.34	0.38	0.33	0.20
Dunkirk	36-013-0006	1.54	1.72	1.30	1.03	1.50	1.28	0.41	0.16	0.14	0.13	0.11
Niagara Falls	36-063-2008	1.53	2.74	3.47	xx	xx	xx	xx	xx	xx	xx	xx

Sampling was suspended at 1472-04 in 2007, and at 0675-01 and 3102-25 in 2013

**Comparison Between NYS Ambient Air Quality and Ambient Air Quality Standards for Calendar Year 2020**

		One Hour Averages					
		average of 99 <sup>th</sup> percentile for last 3 years not to exceed 75 PPB *					
		Observations		99 <sup>th</sup> Percentile, PPB			
Station	Site No.	Total Obs.	% Avail	2018	2019	2020	3-yr Avg.
Buffalo	36-029-0005	8,522	97	7.1	13.4	16.4	12.3
Brookside Terrace	36-029-1014	8,580	98	5	2.4	2.2	3.2
Dunkirk	36-013-0006	8,494	97	3	3.2	2.5	2.9

(Annual Means in parentheses are based on less than 75% available data)

\*New York and Federal Ambient Air Quality Standard + Denotes a contravention of NYS/Federal AAQS

## INHALABLE PARTICULATES (PM<sub>10</sub>)

Parameter Code:81102

### Comparison Between NYS Ambient Air Quality and Ambient Air Quality Standards for Calendar Year 2020

		24-Hour Concentrations - µg/m <sup>3</sup>							# of Days > 150 µg/m <sup>3</sup> - Not to exceed an expected avg of one per year during the last 3 years *					
		Total Obs.	Maximum		2nd Max.		3rd Max.		2018		2019		2020	
Station	Site No.		Value	Date	Value	Date	Value	Date	Mea	Est	Mea	Est	Mea	Est
Buffalo (R&P)	36-029-0005	58	29	27-May	27	22-Jan	26	11-Dec	0	0	0	0	0	0

(Annual Means in parentheses are based on less than 75% available data)

\*New York and Federal Ambient Air Quality Standard + Denotes a contravention of NYS/Federal AAQS

## INHALABLE PARTICULATES (PM<sub>2.5</sub>)

**Comparison Between NYS Ambient Air Quality and Ambient Air Quality Standards for Calendar Year 2020**  
(Average of last 3 years annual means not to exceed 12 µg/m<sup>3</sup> \*; and average of 98<sup>th</sup> percentile for last 3 years not to exceed 35 µg/m<sup>3</sup> \*)

Station	EPA Param Code	Method Code	Site No.	Total Obs.	Maximum Values, µg/m <sup>3</sup>			98th Percentile, µg/m <sup>3</sup>				Quarterly Averages, 2020				Annual Mean, µg/m <sup>3</sup>			
					1 <sup>st</sup>	2 <sup>nd</sup>	3 <sup>rd</sup>	2018	2019	2020	3-yr Avg.	1 <sup>st</sup>	2 <sup>nd</sup>	3 <sup>rd</sup>	4 <sup>th</sup>	2018	2019	2020	3-yr Avg.
Buffalo (F)	88101	145	36-029-0005	58	33.8 5-Jul	25.1 8-Nov	18.7 11-Dec	19.4	16.8	18.7	18.3	6.0	6.3	7.9	6.0	7.5	7.0	6.5	7.0
Buffalo (C)	88502	702	36-029-0005	362	47.9 4-Jul	26.7 8-Nov	24.1 5-Jul	17.8	14.6	16.3	16.3	7.3	5.9	7.4	8.0	7.5	6.7	7.1	7.1
Grand Island Blvd (C)	88502	702	36-029-1013	xx	xx xx	xx xx	xx xx	19.5	14.2	xx	16.8	xx	xx	xx	xx	8.9	6.5	xx	7.7
Brookside Terrace (C)	88502	702	36-029-1014	365	19.9 5-Jul	18.6 8-Nov	16.6 7-Nov	17.5	14.1	13.2	14.9	6.3	4.5	6.2	7.2	7.3	6.7	6.1	6.7
Buffalo Near Road (C)	88502	702	36-029-0023	345	63.7 4-Jul	23.6 8-Nov	20.2 7-Nov	17.0	14.6	16.4	16.0	6.8	4.9	7.3	8.1	7.4	6.9	6.8	7.0
Buffalo Near Road (F)	88101	145	36-029-0023	57	37.7 5-Jul	22.5 8-Nov	18.2 11-Dec	17.8	14.9	18.2	17.0	6.5	6.2	8.3	6.2	7.6	7.6	6.8	7.3
Dunkirk (F)	88101	145	36-013-0006	58	13.2 24-Sep	12.8 8-Nov	12.3 24-Feb	17.2	13.8	12.3	14.4	5.1	5.1	6.7	4.0	6.6	6.6	5.2	6.1
Amherst (F)	88101	145	36-029-0002	86	58.1 5-Jul	19.8 8-Nov	14.2 31-Jan	17.8	14.8	14.2	15.6	5.3	5.4	7.6	4.7	6.9	6.9	6.0	6.6

(F) = Federal Reference Method or Federal Equivalent Method; Parameter Code: 88101

(C) = Continuous, used for AQI calculations. Values based on 24-hour averages of 1-hour values. Parameter Code 88502

(Annual Means in parentheses are based on less than 75% available data)

\*New York and Federal Ambient Air Quality Standard + Denotes a contravention of NYS/Federal AAQS

**CARBON MONOXIDE** - Continuous Gas Filter Correlation

Parameter:42101

**Comparison Between NYS Ambient Air Quality and Ambient Air Quality Standards for Calendar Year 2020**

		<b>One-Hour Average</b>						<b>Running 8-Hour Average (Non-Overlapping)</b>				
		Maximum not to exceed 35 PPM more than once per calendar year						Maximum not to exceed 9 PPM more than once per calendar year *				
		<b>Observations</b>			<b>Highest Values, PPM</b>			<b>Observations</b>		<b>Highest Values, PPM</b>		
<b>Station</b>	<b>Site No.</b>	<b>Total Obs.</b>	<b>% Avail</b>	<b>&gt;35 PPM</b>	<b>1st</b>	<b>2nd</b>	<b>3rd</b>	<b>Total</b>	<b>&gt;9 PPM</b>	<b>1st</b>	<b>2nd</b>	<b>Days&gt; 9PPM</b>
Buffalo	36-029-0005	7,776	89	0	1.40 9-Nov	1.00 11-Dec	1.00 11-Dec	7,809	0	1.00 10-Nov	1.00 10-Nov	0
Buffalo Near-Road	36-029-0023	8,348	95	0	1.49 9-Nov	1.34 8-Nov	1.21 24-Oct	8,330	0	1.00 9-Nov	0.90 10-Nov	0

(Annual Means in parentheses are based on less than 75% available data)

\*New York and Federal Ambient Air Quality Standard + Denotes a contravention of NYS/Federal AAQS

## OZONE - Continuous UV Light Absorption

Parameter: 44201

### Comparison Between NYS Ambient Air Quality and Ambient Air Quality Standards for Calendar Year 2020

		8-hr Running Average Begin Hour							4th Highest Daily Maximum 8-Hour Average-  Not to exceed an avg of 0.070 ppm during the last 3 years			
		Observations			Daily Highest Values, PPM							
Station	Site No.	Total Obs.	% Avail	Days >.070 PPM	1st	2nd	3rd	4th	2018	2019	2020	Avg.
Dunkirk	36-013-0006	242	99	0	0.068 7-Jul	0.067 2-Jun	0.065 3-Jul	0.064 9-Jun	0.071 26-May	0.065 26-Jun	0.064 9-Jun	0.066
Amherst	36-029-0002	214	88	0	0.070 7-Jul	0.067 2-Jun	0.066 8-Jul	0.066 8-Jul	0.069 24-May	0.063 28-Jun	0.066 8-Jul	0.066
Middleport	36-063-1006	239	98	0	0.066 9-Jul	0.065 7-Jul	0.065 9-Jun	0.064 8-Jul	0.069 25-May	0.059 10-Jul	0.064 8-Jul	0.064

(Annual Means in parentheses are based on less than 75% available data)

\*New York and Federal Ambient Air Quality Standard + Denotes a contravention of NYS/Federal AAQS

**NITROGEN DIOXIDE** - Continuous Chemiluminescence

Parameter: 42602

**Annual Averages 2010 through 2020**

Annual Arithmetic Mean (PPB) - Primary Standard (12-month average not to exceed 53 PPB \*)

Station	Site No.	2009	2010	2011	2012	2013	2014	2015	2016	2017	2019	2020
Buffalo Near-Road	36-029-0023	xx	xx	xx	xx	xx	9.95	12.48	10.78	9.49	9.11	7.06
Buffalo	36-029-0005	13.88	13.00	12.52	10.46	10.38	8.73	11.10	9.90	9.60	9.47	7.56
Amherst	36-029-0002	7.42	8.19	8.32	6.44	xx	xx	xx	xx	xx	xx	xx

Sampling at 1451-03 was suspended 12/31/12.

**Comparison Between NYS Ambient Air Quality and Ambient Air Quality Standards for Calendar Year 2020**

		One-Hour Averages - average of 98th percentile for last 3 years not to exceed 75 PPB *								
		Observations		98th Percentile, PPB				Highest Values, PPB		
Station	Site No.	Total	% Avail	2018	2019	2020	3-yr avg.	1st	2nd	3rd
Buffalo Near-Road	36-029-0023	6,290	72	41	45	36.9	41.0	43.5 02/23 :18	40.6 03/01 :02	40.3 02/12 :21
Buffalo	36-029-0005	8,428	96	47.2	51	39.6	45.9	47.1 03/01 :03	46.8 03/01 :02	43.4 11/08 :20

(Annual Means in parentheses are based on less than 75% available data)

\*New York and Federal Ambient Air Quality Standard + Denotes a contravention of NYS/Federal AAQS