

NEW YORK STATE DEPARTMENT OF ENVIRONMENTAL CONSERVATION

Division of Fish, Wildlife & Marine Resources, Bureau of Fisheries, Region 7

1285 Fisher Avenue, Cortland, NY 13045-1012

P: (607) 753-3095 | F: (607) 753-8532

www.dec.ny.gov

March 15, 2023

To: **Cayuga Lake Angler Diary Cooperators**

Dear Fellow Anglers,

We have summarized the data from the 2022 diaries and are sending you the summary information, your 2022 diary and additional diaries for 2023 as needed. Thank you very much for your participation.

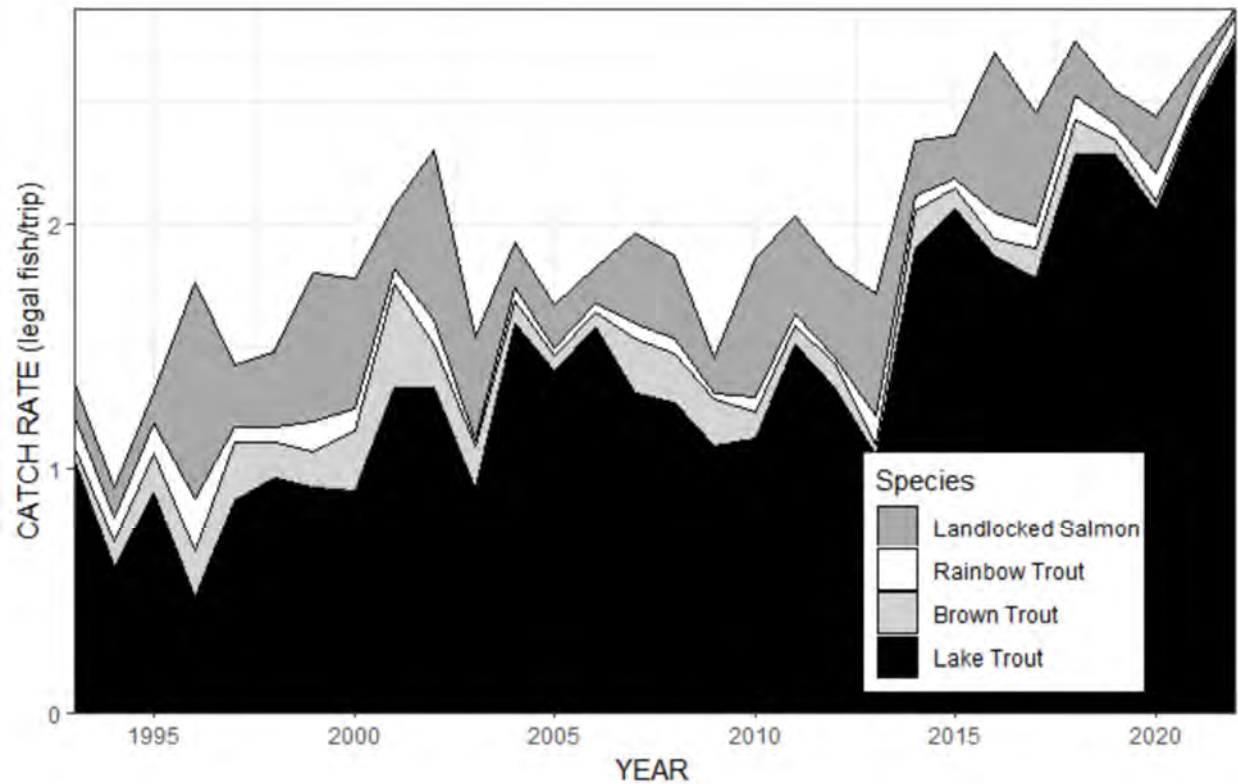
Please check the Lake Trout and Rainbow Trout you catch for fin clips. Some Lake Trout and Rainbow Trout stocked in Cayuga Lake have a fin clip. The fin clip data along with length and the other catch data we receive from our angler diary cooperators are useful for informing fish stocking policies and fishing regulations.

We would like to increase the number of angler cooperators in our diary program. If you didn't return your diaries this year, please do so next year. You may be removed from the mailing list if you do not participate. If you know anyone who might want to participate, please encourage them to join by calling (607) 753-3095 ext. 213 or emailing fwfish7@dec.ny.gov.

Open Water Trout and Salmon Fishing

In 2022, 42 Cayuga Lake open water angler diary cooperators caught 2,735 legal salmonids in 947 trips (cooperators and party members combined) for an average catch of 2.9 fish per trip. Open water cooperators spent 3,822 hours fishing and had a legal salmonid catch rate of 1.4 hours per fish and were successful catching at least one legal salmonid in 96 percent of their trips. Many thanks to the additional cooperators who either joined or returned to the program in 2022!

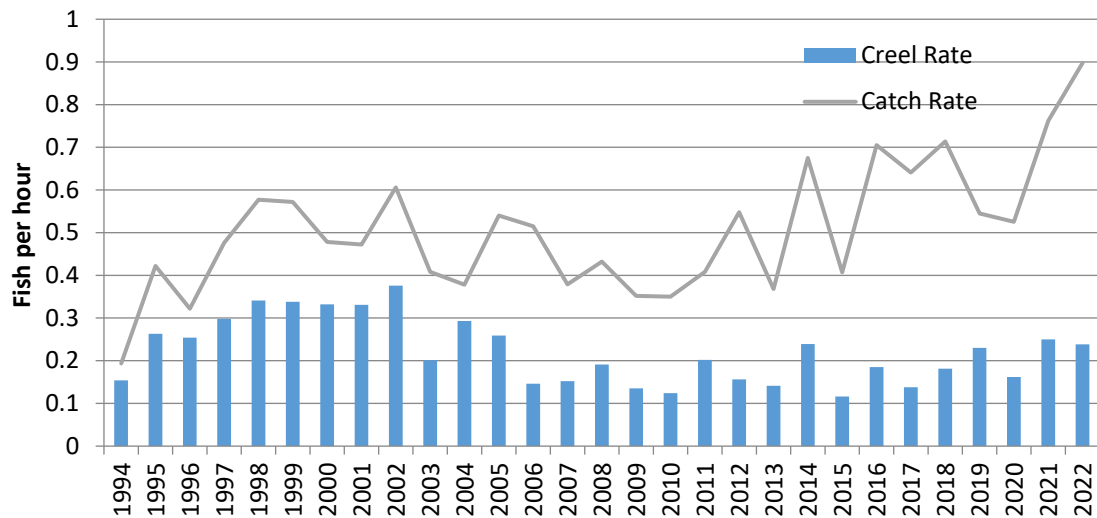
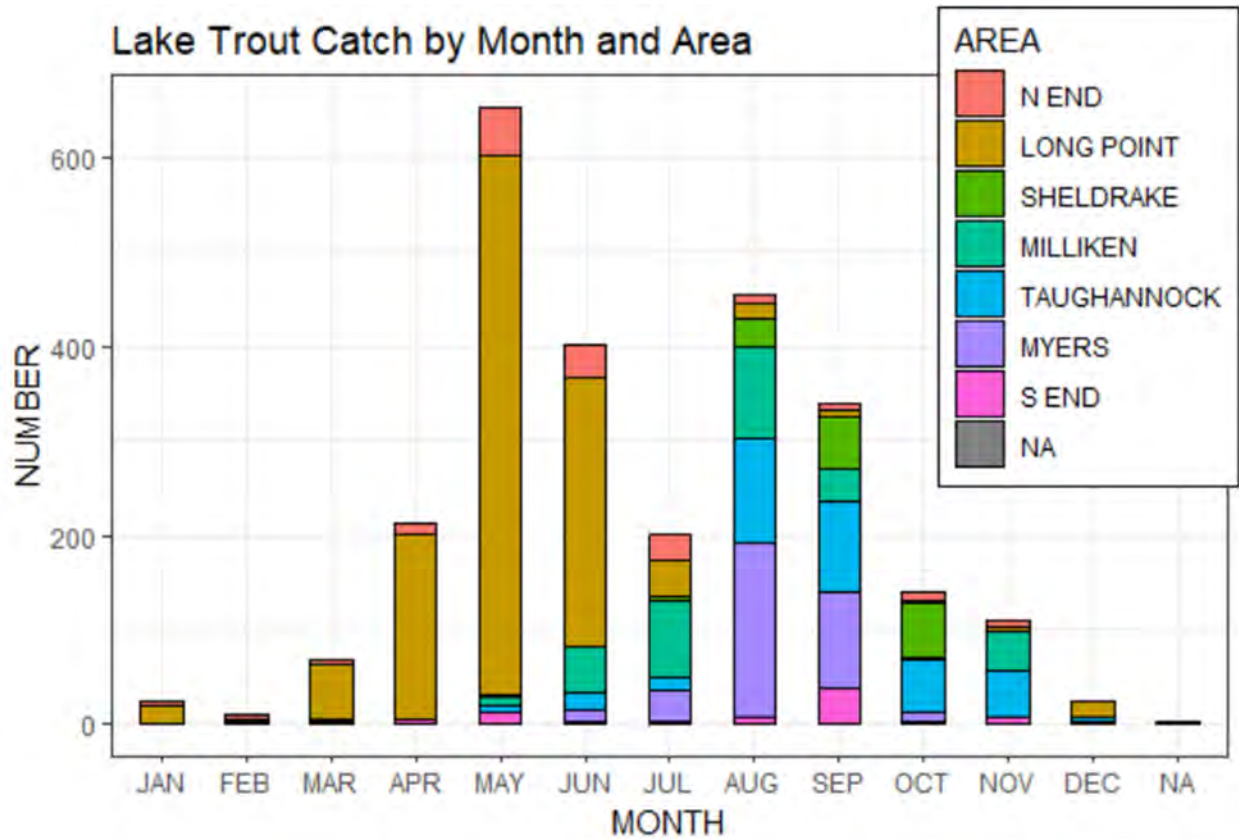
The graph below shows the catch rates (catch/trip) of legal salmonids by our Cayuga Lake open water cooperators from 1984 through 2022 and the relative contribution of each species in the total catch over time. To remove the effects of having varying numbers of cooperators and trips from year to year we look at the catch rate rather than the total number caught when looking at the trends. Note that the actual data are still provided in the attached summary table as usual.



Lake Trout

In 2022, Cayuga Lake open water cooperators caught 2,613 legal Lake Trout, of which 684 were kept. Lake Trout comprised 96 percent of the legal salmonids caught, an increase in proportion of catch from 2021. An additional 28 sub-legal Lake Trout were caught and released. The largest Lake Trout caught was 34.5 inches. Fishing near Long Point in late spring through summer, or north of Myers and Taughannock in summer into early fall produced the best catches of this species.

Additional analyses of catch and harvest rates for anglers targeting Lake Trout, and assessing whether those fish were kept or released, suggests that angler behavior has changed in the last 20 years. While Lake Trout catch rates have varied between 0.4 and 0.7 fish caught/ hour, the harvest rate dropped from over 0.3 harvested/ hour in the late 1990's to less than 0.2 harvested/ hour in the late 2000's (see chart on following page). In 2022, the catch rate increased to 0.9 fish/hour and the harvest rate declined slightly to 0.24 fish/hour. The 2015 harvest rate of 0.12 fish/hour was the lowest ever recorded on Cayuga Lake.



Cayuga Lake angler diary cooperators Lake Trout catch and harvest rates by year

Incidence of Sea Lamprey attacks on Lake Trout in the 2019 netting survey was very low. No active wounds were observed on the 165 Lake Trout in the 23.6 inch to 25.6 inch index group. This was well below our target level for lamprey wounding on Lake Trout in this length interval (target less than 20 active wounds per hundred fish). Lake Trout wounding rate for the 2022 egg

take on Cayuga Lake was also quite low at 6 active wounds per hundred Lake Trout in the 25.6 inch to 27.6 inch index group. Regardless of these exceptionally low wounding rates we will continue to look for additional sources of these parasites and explore additional management options.

Rainbow Trout

Cayuga Lake open water angler diary cooperators caught 67 legal Rainbow Trout, of which 33 were kept. Rainbow Trout comprised 2 percent of the legal salmonid catch. An additional 34 sub-legal Rainbow Trout were caught and released. The largest Rainbow Trout caught was 28.5 inches and the average length was 20.5 inches. Fishing near the North End in fall produced the best catch of this species, but anglers fishing mid-lake in the summer also did well. Catch rates for Rainbow Trout remain lower than we, and many anglers, would like to see.

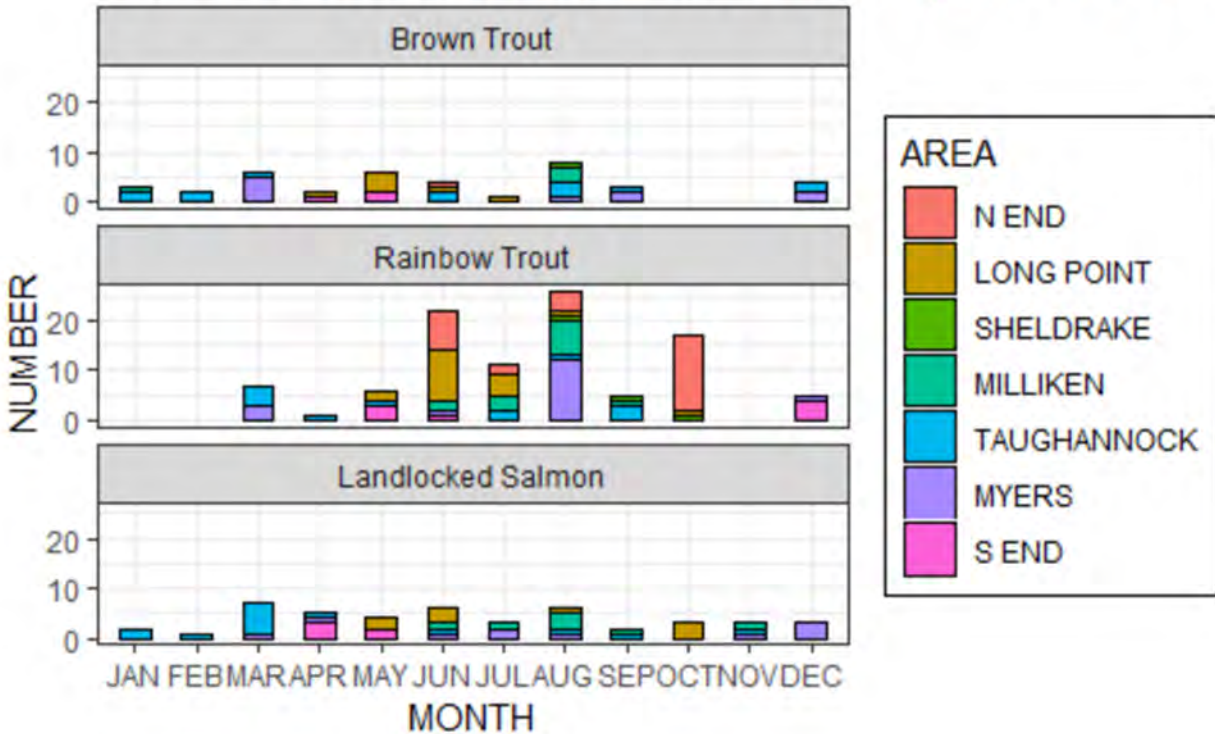
Brown Trout

Cayuga Lake open water angler diary cooperators caught 32 legal Brown Trout, of which 12 were kept. This species comprised 1.0 percent of the legal salmonid catch. Seven additional sub-legal Brown Trout were caught and released. The largest Brown Trout caught was 29.0 inches, and the average length was 20.6 inches. Fishing was tough for Brown Trout in 2022, but fishing near midlake in August produced the best catches of this species. Fishing near Myers in March and Long Point in May also produced some nice fish.

Landlocked Atlantic Salmon

Our open water angler diary participants caught 23 legal Landlocked Salmon, of which 12 were kept. This species comprised 1 percent of the legal salmonid catch. An additional 22 sub-legal salmon were caught and released. Reducing the size limit to 15 inches, would have allowed another 7 fish to be kept if desired. The largest salmon caught was 27.5 inches and the average length was 21.8 inches. Fishing near Taughannock and the South end in winter and early spring produced the best catches of this species.

Non-Lake Trout Trout and Salmon Catch by Month and Area



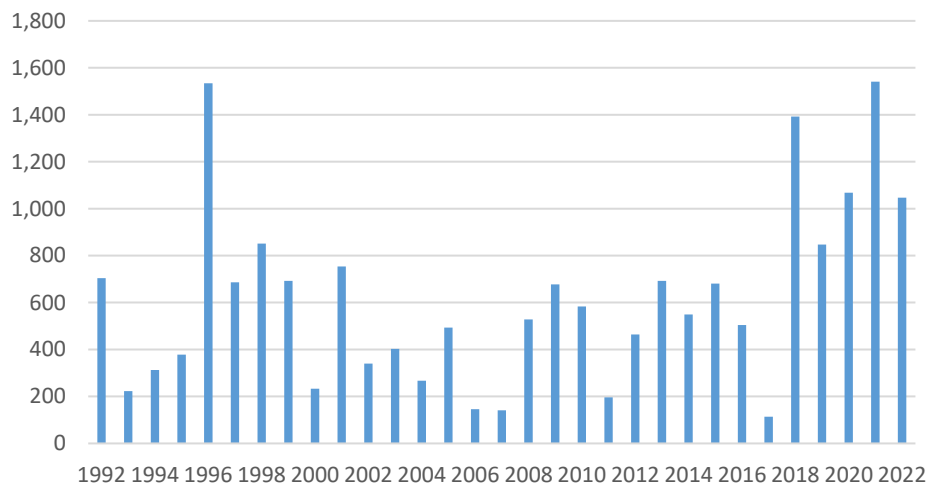
Overall Summary

We know that many Cayuga Lake trout and salmon anglers would like to see more Rainbow Trout, Brown Trout and landlocked salmon in the open water lake catch. Ideally, we would like to achieve a balance of around 65% Lake Trout and 35% other trout and salmon in the diary catch. While Lake Trout undoubtedly make up a higher percentage of the total salmonid population of lake than we would like, a couple factors may be at play which make them appear even more abundant than they probably are. One cooperater accounted for sixty percent of the total lake trout caught, and that individual spends most of his time specifically targeting lake trout. To work toward a better balance, starting in 2013, we reduced the number of yearling Lake Trout stocked by 5,000. This represents an overall reduction of 12.5% in yearling equivalents and is meant to both compensate for what appears to be slightly higher wild production in recent years and to lower the overall biomass of Lake Trout long term. However, we need to maintain a robust Lake Trout population to buffer the impacts of Sea Lamprey attacks on other species and to ensure an ample supply each year for the Department's Lake Trout propagation program. Lake Trout eggs taken from Cayuga Lake brood stock are used to raise fish for stocking in the Finger Lakes, Lake Champlain, Otsego Lake and occasionally Lake Ontario. In addition, the decade long trend of reduced angler harvest rates for Lake Trout means fewer fish need to be stocked to maintain any given population density. Because Lake Trout are long lived, we do not expect a rapid change. In 2017, we changed the allowable daily harvest limit from 3 to 5 fish for Lake Trout in hopes of reversing the angler harvest trend. While the harvest rate has improved somewhat in the last few years, there are still a surplus of lake trout in the lake. Further stocking cuts of lake trout may be necessary to reduce the overpopulation.

Cayuga Lake Tributary Fishing

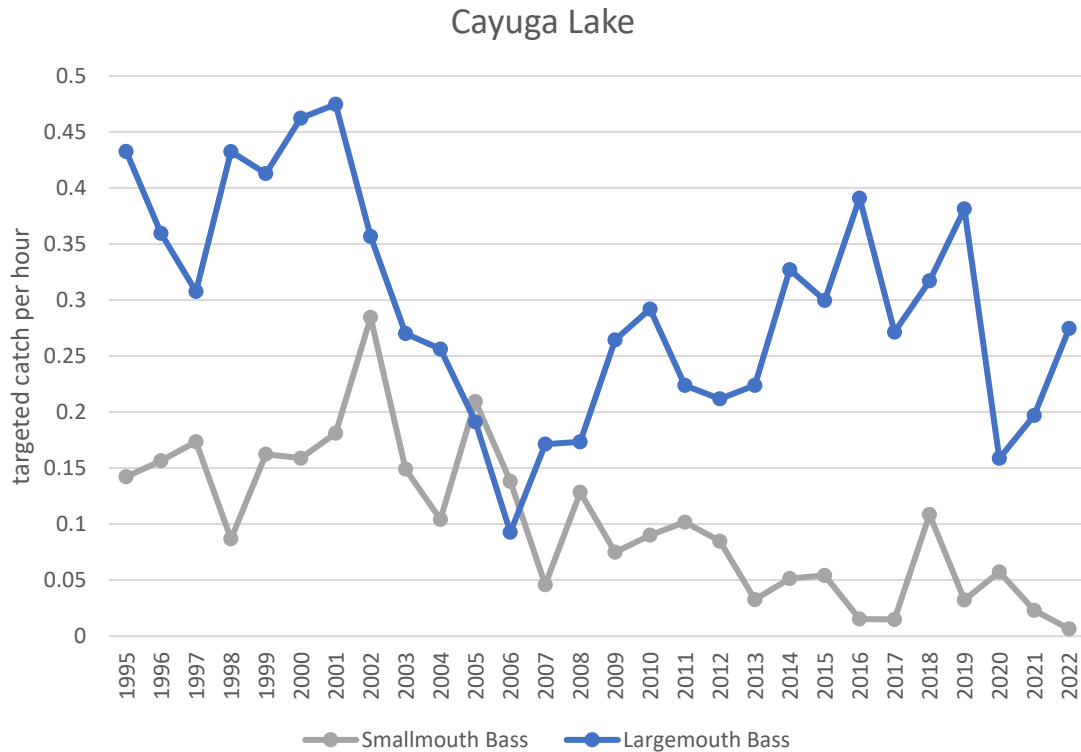
In 2022, seven Cayuga Lake tributary diary cooperators caught 119 legal Rainbow Trout, 3 legal Brown Trout, no legal Lake Trout, and one legal landlocked Atlantic Salmon. Three of the tributary fish caught by angler cooperators in 2022 were kept. The largest Rainbow Trout, Brown Trout, and landlocked Atlantic Salmon caught were 27.5, 16.5, and 23.5 inches, respectively. Cayuga Inlet produced the highest catches of Rainbow Trout in the spring and fall. Cayuga Inlet also had the highest numbers of angler trips. As part of our effort toward a more diverse balance of angling opportunities, starting in 2013, we increased the number of Rainbow Trout stocked in Cayuga Inlet and Enfield Creek by 5,000 (total). We also began passing fish at the Cayuga Inlet Fishway in the fall in 2017. We anticipate that these fish will be available to anglers in the tributaries and in the main lake and that we will begin to see improvement in Rainbow Trout catch rates in the spring and landlocked Atlantic Salmon and Brown Trout catch rates in the fall. Despite relatively low numbers of Rainbow Trout reported caught by anglers, we have had good Rainbow Trout spawning runs at the fishway on Cayuga Inlet in recent years, except for 2017 when the fish bypassed the fishway and swam upstream to spawn without being counted first. Fish passage in spring 2022 was less impressive than the near record in 2021, but still well above average numbers of rainbow trout were passed upstream.

Rainbow Trout caught at Fishway in Spring



Cayuga Lake Warmwater Fishing

In 2022, ten Cayuga Lake warmwater diary cooperators caught three legal Smallmouth Bass, 128 legal Largemouth Bass, no legal Northern Pike, and seven legal Chain Pickerel. Of the 138 legal fish caught 24 Largemouth Bass, three Smallmouth Bass and one Chain Pickerel were kept. The largest Smallmouth Bass, Largemouth Bass and Chain Pickerel measured were 20.5, 21.0, and 29.0 inches, respectively. Most Chain Pickerel were caught at the north end in spring. Largemouth Bass fishing was best at the North End from late spring into mid-summer. Smallmouth Bass catches were best at the south end in July.



Cayuga Lake angler diary cooperator Large and Smallmouth Bass catch rates by year

Targeted catch rate of legal Smallmouth Bass decreased to 0.006 fish/hour, and targeted catch rate of legal Largemouth Bass increased to 0.27 fish/hour. While fishing for smallmouth bass may be slow, it is worth noting that the state record was broken in 2022 when an angler caught an 8 lb 6 oz smallmouth on the opening day of bass harvest season on Cayuga Lake. Even slow fishing can produce a memorable fish for the persistent angler!

We attempted a centrarchid spring electrofishing survey in 2022 with some success. We did not cover as many sites as we wanted to, but we did catch 338 fish over three nights, including 54 largemouth bass and 2 smallmouth bass. It's not just anglers who have difficulty finding smallmouth on Cayuga Lake! One of the largemouth bass was quite large at 20.6 inches and 5.7 lbs. Most notable though was the lack of small fish, there were very few one-year-old fish. We will attempt this survey again, and hopefully a survey including more sites will give us a more complete snapshot of the population.

Thank you very much, please remember to check for fin clips, turn in your diaries at the end of the year and happy fishing in 2023!

Sincerely,

Emily Zollweg-Horan
Senior Aquatic Biologist



NEW YORK STATE DEPARTMENT OF ENVIRONMENTAL CONSERVATION

Cayuga Lake

Trout and Salmon Fishing Diary Summary

Year	Total # Angler Trips	% Trips Successful ¹	Ave Hours/ Angler Trip	Legal Salmonids Kept ²				Legal Salmonids (Released) ³				Average Length of Legal Fish Kept (in.)				Average Weight of Legal Fish Kept (lbs)				# Hours to Catch 1 legal Salmonid	# of Coop.
				LT	RT	BT	LLS	LT	RT	BT	LLS	LT	RT	BT	LLS	LT	RT	BT	LLS		
1963	1047	--	4.7	1017	--	--	--	23.2	--	--	--	3.9	--	--	--	4.9	--				
1964	1633	--	4.3	1762	--	--	--	22.4	--	--	--	3.5	--	--	--	4.0	--				
1965	1850	--	4.7	1834	--	--	--	22.1	--	--	--	3.9	--	--	--	4.7	--				
1966	1660	--	5.2	1840	--	--	--	22.6	--	--	--	4.2	--	--	--	4.6	--				
1967	1215	--	4.5	889	--	--	--	22.9	--	--	--	4.4	--	--	--	6.2	--				
1968	1198	--	4.8	1217	--	--	--	22.6	--	--	--	4.3	--	--	--	4.8	--				
1969	842	--	5.1	697	--	--	--	22.4	--	--	--	4.0	--	--	--	6.2	--				
1970	793	--	5.1	726	--	--	--	22.2	--	--	--	4.0	--	--	--	5.6	--				
1971	894	--	5.2	971	--	--	--	22.1	--	--	--	4.0	--	--	--	4.7	--				
1972	527	--	5.8	452	--	--	--	22.1	--	--	--	4.0	--	--	--	6.7	--				
1973	781	--	5.6	1067	62	--	44	23.1	--	--	--	4.5	--	--	--	4.1	--				
1974	625	--	5.5	451	48	--	16	22.6	--	--	--	4.3	--	--	--	7.7	--				
1975	521	--	4.0	663	71	--	33	23.1	--	--	--	5.2	--	--	--	4.1	--				
1976	600	60	5.5	321	215	13	89	24.9	16.8	17.0	18.7	5.1	2.9	2.9	3.2	5.0	40				
1977	826	58	6.2	764	146	81	32	24.4	15.6	13.7	19.6	5.3	2.3	1.5	4.8	4.9	57				
1978	1237	49	3.7	597	173	229	17	24.0	15.7	14.7	22.7	5.5	1.7	1.5	2.4	6.7	85				
1979	836	43	4.0	309	129	87	5	23.4	15.2	13.2	14.8	5.0	2.1	1.1	2.0	7.0	76				
1980	856	65	3.8	423	241	368	20	22.2	15.7	15.2	17.4	4.5	2.1	1.9	1.9	4.4	75				
1981	1297	69	4.2	800	607	705	165	21.9	16.0	14.7	17.5	4.2	2.0	1.7	2.0	3.4	102				
1982	1072	66	4.0	622	294	445	144	21.5	14.8	13.8	17.1	3.9	1.6	1.4	2.2	3.7	86				
1983	1104	69	3.9	782	306	347	341	21.2	15.4	15.2	18.3	3.7	1.9	1.6	2.5	3.6	74				
1984	1552	70	3.6	926	305	224	421	20.9	15.7	14.7	17.5	3.1	1.8	1.4	2.0	2.5	70				
1985	1752	85	4.1	1743	292	201	668	21.2	17.2	15.0	18.1	3.7	2.3	1.7	2.1	2.1	77				
1986	1752	74	3.7	1416	173	281	241	22.2	18.1	15.8	18.8	4.2	3.7	2.2	3.2	2.6	69				
1987	2140	78	4.2	1881	276	302	351	22.2	16.0	16.4	18.2	4.1	2.7	2.7	3.6	2.8	75				
1988	2565	81	4.3	1987	501	316	1161	21.6	17.2	16.8	16.8	4.0	2.5	3.0	2.8	2.3	90				
1989	2069	75	4.0	1725	229	193	303	22.1	17.1	17.4	20.1	4.3	3.0	3.2	4.4	3.0	79				
1990	1813	74	4.2	1437	241	95	86	21.9	16.7	18.3	21.0	3.9	2.8	3.3	3.3	3.5	74				
1991	2121	73	4.6	1501	177	104	153	22.7	17.9	19.0	17.0	4.2	2.3	3.2	1.8	4.0	87				
1992	2136	69	5.2	1321	188	122	228	21.7	18.7	17.4	20.5	4.0	2.9	2.6	3.1	5.0	90				
1993	1672	79	5.2	1446	69	90	43	22.2	18.4	18.1	20.5	4.5	3.0	3.2	2.9	4.2	90				
1994	1548	61	5.2	647	114	138	35	22.7	17.8	17.6	19.4	4.8	2.7	2.8	3.2	6.6	94				
1995	1926	76	5.3	1285	163	247	83	23.3	17.8	18.2	19.1	4.8	2.5	3.6	2.7	4.4	98				



NEW YORK STATE DEPARTMENT OF ENVIRONMENTAL CONSERVATION

Cayuga Lake
Trout and Salmon Fishing Diary Summary

Year	Total # Angler Trips	% Trips Successful ¹	Ave Hours/ Angler Trip	Legal Salmonids Kept ²				Legal Salmonids (Released) ³				Average Length of Legal Fish Kept (in.)				Average Weight of Legal Fish Kept (lbs)				# Hours to Catch 1 legal Salmonid	# of Coop.
				LT	RT	BT	LLS	LT	RT	BT	LLS	LT	RT	BT	LLS	LT	RT	BT	LLS		
1996	2116	70	5.1	728	333	283	573	22.5	18.5	18.2	19.2	4.7	2.5	3.3	2.6	4.5	90				
1997	2300	77	5.1	1276	126	409	394	23.8	19.5	17.9	21.1	4.9	3.5	3.3	3.4	3.8	101				
1998	1484	72	4.9	830	61	171	169	21.8	19.0	18.5	20.3	3.7	3.0	3.4	3.2	3.8	79				
1999	1303	74	5.3	783	137	168	290	21.3	18.7	18.0	19.7	3.6	2.6	3.0	3.5	3.8	65				
2000	1454	77	5.3	945	102	237	440	20.9	20.0	17.9	21.1	3.4	3.8	3.7	4.2	3.3	69				
2001	1615	73	5.3	1188	77	503	222	22.0	18.5	18.7	20.8	4.1	3.0	3.8	3.8	2.7	68				
2002	1164	79	5.9	978 (556)	96 (14)	161 (40)	333 (75)	21.7	19.1	19.1	19.7	4.0	3.1	4.4	3.2	3.0	55				
2003	724	72	4.5	368 (293)	9 (6)	73 (56)	113 (137)	22.3	20.0	19.5	21.2	4.1	3.4	4.7	3.4	3.1	58				
2004	749	69	5.0	808 (384)	20 (13)	50 (17)	44 (10)	22.4	20.4	21.0	20.4	4.3	5.6	5.5	3.6	2.8	57				
2005	1199	73	4.8	953 (682)	20 (12)	51 (23)	77 (20)	23.2	19.6	18.9	20.8	4.8	3.4	4.0	3.5	3.1	63				
2006	1013	74	5.0	722 (821)	23 (12)	34 (24)	35 (13)	23.6	18.0	18.7	20.6	5.2	2.8	4.9	4.8	3.0	61				
2007	745	73	4.7	350 (540)	20 (22)	69 (83)	26 (31)	24.8	18.5	18.8	20.1	5.3	3.3	3.3	4.0	3.1	49				
2008	905	76	4.8	700 (411)	43 (11)	126 (50)	122 (33)	22.6	19.8	20.0	20.0	4.8	3.4	4.2	3.7	2.9	43				
2009	580	78	4.9	269 (358)	11 (6)	78 (29)	39 (15)	24.4	20.3	20.2	20.1	5.0	3.0	4.7	2.7	3.5	34				
2010	791	78	4.8	460 (379)	35 (8)	54 (34)	95 (18)	22.9	19.4	19.6	19.5	4.9	3.5	4.7	2.9	3.5	46				
2011	905	83	4.9	611 (762)	22 (16)	26 (45)	118 (63)	23.4	19.4	22.8	20.9	5.4	2.5	7.6	3.4	2.7	47				
2012	677	79	4.5	292 (605)	7 (7)	36 (30)	102 (87)	23.6	19.3	20.3	21.0	4.6	3.3	4.5	3.2	2.6	35				
2013	672	64	4.5	391 (314)	38 (24)	23 (5)	71 (16)	22.3	19.5	18.8	20.7	5.2	3.5	4.1	4.2	3.4	41				
2014	466	83	4.2	308 (590)	18 (9)	37 (30)	23 (6)	22.3	19.1	18.2	19.5	4.6	--	--	--	1.9	27				
2015	679	79	4.4	428 (987)	14 (11)	21 (28)	47 (30)	23.5	19.0	21.3	21.0	5.1	3.2	5.6	3.9	1.9	36				
2016	774	89	4.7	405 (1015)	49 (23)	28 (26)	89 (57)	23.1	19.7	20.1	19.5	4.0	4.0	4.8	1.9	2.1	25				
2017	954	89	4.6	513 (1171)	43 (35)	62 (48)	165 (138)	22.7	20.1	19.1	21.2	4.5	4.5	3.8	4.0	2.0	40				
2018	820	85	4.5	593 (1286)	39 (53)	61 (53)	44 (66)	24.2	19.3	19.4	22.0	5.5	3.1	3.9	3.4	1.7	34				
2019	1094	87	4.4	897 (1599)	43 (26)	26 (39)	43 (35)	24.7	20.2	24.5	20.7	6.1	4.6	9.4	3.3	1.8	44				
2020	955	89	4.4	626 (1336)	61 (48)	25 (12)	81 (56)	25.2	20.5	21.4	20.8	5.9	3.8	6.1	3.1	1.9	43				
2021	905	93	4.1	2228	80	24	72	25.4	20.0	22.2	21.8	5.8	3.4	11.4	5.7	1.5	43				
2022	947	81	4.0	684 (1929)	33 (34)	12 (20)	12 (11)	25.2	20.5	20.6	21.7	5.8	5.5	5.0	5.5	1.4	42				

1 - Success equals one or more legal salmonid caught.

2 - Number of legal lake trout - LT, rainbow trout - RT, brown trout - BT and landlocked Atlantic salmon - LLS kept.

3 - Beginning in 2002, the number of legal lake trout - LT, rainbow trout - RT, brown trout - BT and landlocked Atlantic salmon - LLS caught and released are shown in parentheses () to the right of the number kept.



NEW YORK STATE DEPARTMENT OF ENVIRONMENTAL CONSERVATION

**Cayuga Lake Tributaries
Trout and Salmon Fishing Diary Summary**

Year	Total # Angler Trips	% Trips Successful ¹	Ave Hours/ Angler Trip	Legal Salmonids Kept ²			Average Length of Legal Fish Kept (in.)				Average Weight of Legal Fish Kept (lbs)			# Hours to Catch 1 legal Salmonid	# of Coop.		
				LT	RT	BT	LLS	LT	RT	BT	LLS	LT	RT			BT	LLS
1978	148	42	3.2	--	59	4	3	--	15.2	14.3	18.9	--	3.8	2.8	3.0	10.1	25
1979	296	62	3.4	--	380	17	4	--	15.0	13.1	20.9	--	2.1	1.0	3.0	2.4	30
1980	232	65	3.0	--	285	17	6	--	14.2	14.3	18.5	--	2.4	1.4	3.1	2.4	25
1981	380	78	3.3	24	561	50	33	25.6	15.5	14.5	17.7	4.6	2.2	1.3	2.9	2.0	46
1982	295	62	3.1	--	313	19	3	--	16.7	14.4	18.0	--	1.6	1.3	4.0	3.2	45
1983	232	64	2.8	--	253	9	32	--	14.9	12.7	18.9	--	3.1	1.5	--	2.9	30
1984	455	54	3.0	--	449	45	148	--	14.8	12.8	17.2	--	2.2	1.1	3.5	1.6	39
1985	334	72	3.5	1	274	23	48	23.5	16.4	13.9	21.0	--	1.8	1.4	3.3	2.7	35
1986	281	58	3.2	2	99	65	15	26.0	18.1	16.5	22.5	--	--	1.6	--	3.6	26
1987	407	68	3.1	1	309	56	32	29.0	16.8	19.7	22.5	--	2.8	--	4.8	2.5	32
1988	357	61	3.2	2	242	48	41	27.5	16.4	18.8	21.6	7.0	2.7	--	4.9	2.4	30
1989	408	68	3.5	14	226	74	42	26.6	18.5	19.8	22.6	4.7	2.8	3.7	5.6	2.9	32
1990	376	73	3.3	13	175	91	17	26.3	17.9	19.9	20.0	5.5	3.5	4.2	2.6	2.2	26
1991	167	48	3.5	1	50	16	1	29.0	19.3	20.3	17.5	8.3	3.8	4.0	--	3.8	21
1992	267	47	2.8	--	99	43	13	--	20.5	21.0	22.8	--	4.5	4.2	4.2	3.3	27
1993	223	44	3.4	--	62	28	11	--	20.9	19.8	21.1	--	4.8	4.0	4.3	4.6	24
1994	330	31	3.0	1	42	29	2	25.0	19.4	20.6	23.0	4.0	2.9	3.5	5.0	6.7	31
1995	234	32	3.4	2	38	11	4	27.2	18.8	22.6	23.1	--	2.1	5.1	--	8.4	30
1996	298	50	3.0	--	98	28	7	25.0	19.5	21.2	19.6	4.5	3.0	6.0	2.5	3.6	33
1997	139	56	2.9	--	24	16	13	--	21.0	20.2	21.8	--	2.8	3.6	3.9	3.9	24
1998	94	35	3.1	--	22	4	1	--	19.4	17.1	24.0	--	2.8	1.3	--	7.3	23
1999	108	29	2.4	--	18	1	1	--	20.8	20.1	25.5	--	3.0	4.0	4.3	7.1	23
2000	109	49	3.0	--	14	11	9	--	20.3	20.0	22.7	--	--	5.8	5.0	6.1	13
2001	208	46	2.9	2	45	23	4	22.2	21.3	21.7	20.1	3.7	4.8	4.4	3.0	4.4	24
2002	102	49	3.3	--	20 (40)	22 (16)	--	--	21.8	22.6	--	--	4.6	5.4	--	3.5	17
2003	112	42	2.7	2	18 (31)	6 (15)	3 (9)	26.3	19.5	23.2	22.7	5.5	3.1	6.5	--	3.6	19
2004	73	23	2.6	--	5 (6)	4 (2)	1 (3)	--	18.6	21.9	26.7	--	--	--	8.7	9.0	14
2005	105	36	2.7	-- (1)	19 (20)	1 (8)	-- (6)	--	21.6	16.0	--	--	4.9	1.5	--	5.1	18
2006	95	37	3.2	--	6 (8)	5 (10)	2 (2)	--	21.8	20.0	21.5	--	4.0	--	--	9.3	14
2007	101	34	3.0	--	8 (2)	-- (14)	2 (10)	--	18.6	--	22.5	--	--	--	--	8.4	12
2008	114	58	2.7	--	6 (25)	10 (17)	7 (26)	--	21.1	23.2	21.4	--	4.0	6.4	3.9	3.3	11
2009	116	53	2.6	--	17 (17)	4 (4)	3 (14)	--	21.8	22.5	21.3	--	3.2	7.2	--	5.1	14
2010	139	24	2.7	3	4 (27)	-- (2)	1 (14)	25.0	23.0	--	23.0	--	--	--	--	7.3	14
2011	104	40	2.2	--	7 (7)	1 (3)	8 (29)	--	20.4	24.5	23.1	--	1.5	--	--	4.3	11
2012	60	40	2.6	--	6 (8)	1 (8)	5 (6)	--	17.8	16	19.9	--	2.5	--	--	4.5	9
2013	59	35	2.4	1	21 (6)	-- (1)	-- (1)	21.0	21.7	--	--	4.0	2.3	--	--	4.7	11
2014	111	28	1.7	--	4	17 (3)	7 (5)	--	20.6	21.1	20.9	--	2.8	--	--	5.4	11
2015	111	54	2.6	0	6 (31)	18 (4)	24 (14)	--	24.2	22.9	22.6	--	4.7	6.2	4.5	3.0	11
2016	131	54	2.1	0 (3)	9 (42)	11 (10)	3 (16)	--	20.1	22.7	23.3	--	2.4	10.5	--	2.9	9
2017	53	55	2.5	2	4 (1)	1 (3)	12 (28)	--	22.8	28	23.6	--	4.0	--	4.4	2.6	11
2018	56	67	2.4	5	36 (17)	0 (3)	5 (16)	26.8	19.7	--	24.8	6.1	2.6	--	5.8	1.6	8
2019	110	55	3.2	5 (5)	15 (55)	0 (3)	3 (16)	24.7	22.3	--	25.1	--	4.1	--	6.5	3.5	12
2020	38	51	2.6	0	0 (18)	0 (23)	0 (4)	--	--	--	--	--	--	--	--	2.2	6
2021	118	78	3.4	6 (5)	11 (149)	1 (4)	7 (12)	27.2	20.4	26.8	25.2	--	--	--	--	2.1	8
2022	59	57	3.6	0	3 (116)	0 (3)	1	--	21.3	--	23.5	--	--	--	--	1.7	7

1 - Success equals one or more legal salmonid caught.

2 - Number of legal lake trout - LT, rainbow trout - RT, brown trout - BT and landlocked Atlantic salmon - LLS kept.

3 - Beginning in 2002, the number of legal lake trout - LT, rainbow trout - RT, brown trout - BT and landlocked Atlantic salmon - LLS caught and released are shown in parentheses () to the right of the number kept.



NEW YORK STATE DEPARTMENT OF ENVIRONMENTAL CONSERVATION

Cayuga Lake
Warmwater Fishing Diary Summary

Year	Total # Angler Trips	% Trips Successful ¹	Ave Hours/ Angler Trip	Legal Gamefish Kept ²					Average Length of Legal Fish Kept (in.)					Average Weight of Legal Fish Kept (lbs)				# Hours to Catch 1 legal Gamefish	# of Coop.	
				SMB	LMB	WAE	NOP	PKL	SMB	LMB	WAE	NOP	PKL	SMB	LMB	WAE	NOP			PKL
1978	49	33	2.4	22	--	--	--	2	13.6	--	--	--	21.0	2.0	--	--	--	1.6	8.8	3
1979	94	63	4.4	58	86	--	3	21	13.8	15.3	--	37.3	19.6	1.9	2.9	--	14.0	1.0	3.5	7
1980	46	83	3.6	40	7	--	1	3	14.7	14.8	--	42.0	18.2	2.4	2.1	--	17.3	1.8	2.1	5
1981	48	92	3.4	44	17	--	1	2	14.5	17.6	--	31.0	27.0	1.9	--	--	--	4.0	2.6	7
1982	20	95	4.5	19	26	--	1	4	15.0	14.8	--	31.0	18.0	2.0	1.2	--	6.5	1.8	2.8	6
1983	31	90	6.7	44	39	--	2	9	13.9	13.8	--	22.5	18.3	1.3	1.4	--	3.3	1.4	2.2	5
1984	30	70	2.5	5	27	--	--	--	14.9	13.8	--	--	--	--	--	--	--	--	3.5	6
1985	231	94	4.5	12	237	--	--	9	14.5	14.5	--	--	19.9	3.7	3.0	--	--	2.1	1.9	7
1986	171	94	3.7	4	199	--	--	1	15.8	14.7	--	--	21.3	--	2.3	--	--	--	1.3	4
1987	141	91	2.6	5	245	--	--	7	16.4	13.3	--	--	21.0	--	1.5	--	--	2.0	0.8	4
1988	338	94	3.3	14	360	--	--	--	16.3	14.7	--	--	--	1.7	1.3	--	--	--	1.8	7
1989	285	97	2.8	3	267	--	5	--	15.3	14.5	--	26.1	--	1.8	1.3	--	--	--	2.1	6
1990	176	93	3.1	12	276	--	1	--	15.4	14.6	--	27.0	--	--	--	--	--	--	1.2	8
1991	137	47	3.1	17	184	--	1	--	14.8	13.9	--	25.3	--	--	--	--	--	--	1.1	6
1992	260	96	3.5	123	320	--	1	1	14.7	14.9	--	25.3	23.0	3.0	2.9	--	--	--	1.2	12
1993	217	86	2.9	40	273	--	--	1	14.4	14.8	--	--	16.0	--	3.5	--	--	--	1.3	10
1994	260	92	4.2	77	256	--	5	1	14.9	14.7	--	24.0	16.0	--	3.1	--	--	--	1.7	11
1995	196	95	3.8	52	172	--	--	--	14.8	15.2	--	--	--	2.8	3.1	--	--	--	1.5	10
1996	210	91	3.2	31	85	--	1	--	14.2	15.4	--	--	--	--	2.6	--	--	--	1.3	12
1997	174	88	3.7	72	98	--	--	--	14.9	14.6	--	--	--	--	2.8	--	--	--	1.8	11
1998	187	90	3.4	21	123	--	--	--	14.1	14.3	--	--	--	--	3.1	--	--	--	1.7	10
1999	166	91	3.6	48	161	--	--	--	14.9	15.1	--	--	--	--	3.7	--	--	--	1.6	9
2000	173	93	3.7	50	114	--	--	--	15.2	14.2	--	--	--	3.1	3.5	--	--	--	1.2	8
2001	133	90	3.5	37	46	--	--	--	15.2	15.5	--	--	--	--	--	--	--	--	1.3	10
2002	117	89	4.1	38 (96)	6 (157)	--	-- (4)	-- (48)	13.9	14.4	--	--	--	--	--	--	--	--	1.4	9
2003	105	82	4.7	20 (53)	4 (121)	--	-- (29)	-- (35)	15.4	16.6	--	--	--	--	--	--	--	--	1.9	10
2004	148	83	4.8	28 (45)	46 (111)	--	2 (34)	6 (40)	15.2	15.9	--	28.3	19.5	--	3.4	--	--	--	2.3	11
2005	152	79	4.8	36 (104)	31 (96)	--	-- (19)	-- (22)	15.3	15.3	--	--	--	--	--	--	--	--	2.4	13
2006	133	72	5.1	30 (58)	16 (43)	--	1 (18)	-- (8)	15.2	15.8	--	--	--	--	--	--	--	--	3.9	14
2007	109	69	4.8	12 (11)	38 (50)	--	-- (8)	3 (9)	15.1	15.2	--	--	17.3	--	2.6	--	--	--	4.0	13
2008	96	87	5.0	25 (32)	32 (45)	--	-- (7)	3 (13)	15.0	15.4	--	--	20.0	--	--	--	--	--	3.0	10
2009	113	85	4.5	13 (17)	26 (84)	--	2 (16)	18 (20)	14.9	15.3	--	29.0	18.6	--	--	--	--	--	2.6	9
2010	102	78	4.4	8 (25)	21 (101)	--	1 (19)	8 (15)	14.3	15.9	--	28.0	19.6	--	--	--	--	--	2.2	8
2011	100	84	4.8	17 (22)	22 (95)	--	4 (49)	12 (24)	15.3	16.1	--	28.6	19.7	--	--	--	--	--	1.9	10
2012	81	80	5.2	10 (25)	28 (37)	--	1 (16)	6 (5)	15.4	14.9	--	32.0	19.8	--	--	--	--	--	3.3	10
2013	111	70	4.5	9 (6)	70 (36)	--	0 (8)	0 (21)	14.8	13.3	--	--	--	--	--	--	--	--	3.4	11
2014	116	82	4.1	2 (19)	13 (119)	--	2 (28)	10 (79)	14.4	15.9	--	31	20.1	--	--	--	--	--	1.7	10
2015	70	84	5.1	0 (15)	8 (78)	--	0 (12)	12 (45)	--	15.5	--	--	20.7	--	--	--	--	--	2.3	5
2016	61	94	4.6	0 (3)	5 (88)	--	10 (7)	5 (57)	--	13.2	--	22.8	20.6	--	--	--	--	--	1.6	7
2017	228	86	5.3	10 (6)	29 (250)	--	0 (0)	57 (126)	15.8	16.1	--	--	20.8	--	--	--	--	--	2.5	10
2018	154	83	4.1	0 (41)	22 (150)	--	0 (4)	20 (87)	--	15.9	--	--	20.6	--	--	--	--	--	2.0	12
2019	101	70	4.1	1 (11)	8 (134)	--	1 (7)	12 (117)	18.0	15.9	--	31	20.8	--	--	--	--	--	1.6	8
2020	129	69	4.5	0 (29)	0 (76)	--	1 (2)	23 (44)	--	--	--	24	20	--	--	--	--	--	3.3	13
2021	121	51	3.6	5 (4)	11 (68)	--	0	4 (36)	15.3	16.1	--	--	20	--	--	--	--	--	3.4	11
2022	121	53	4.1	3 (0)	24 (104)	--	0	1 (6)	17.0	16.0	--	--	20.3	--	--	--	--	--	3.6	10

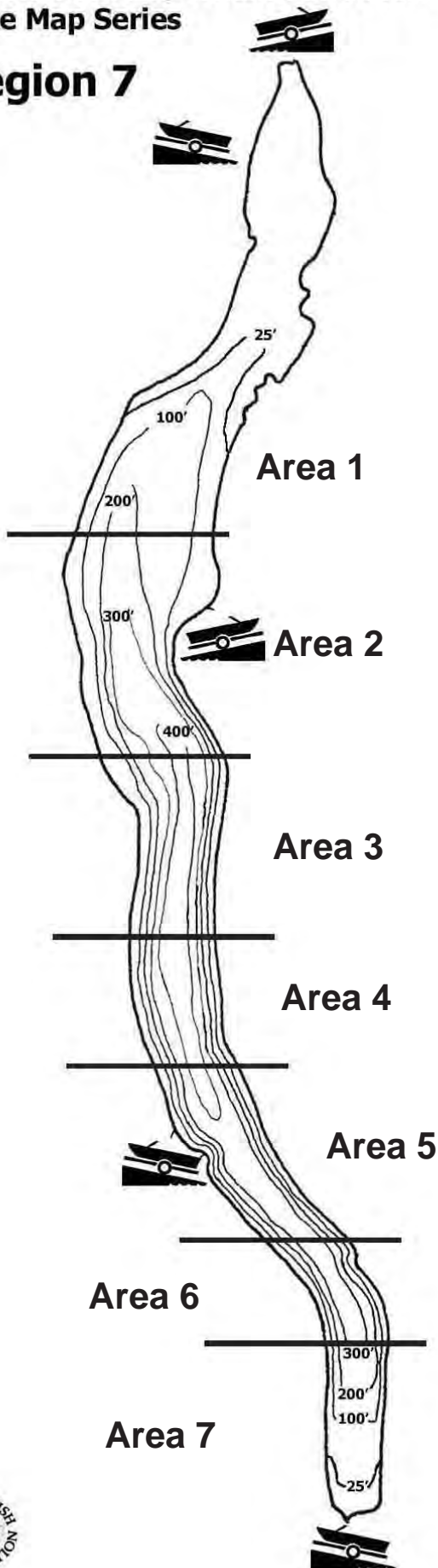
1 - Success equals one or more legal warmwater gamefish caught.

2 - Number of legal smallmouth bass - SMB, largemouth bass - LMB, walleye - WAE, northern pike - NOP and pickerel - PKL kept.

3 - Beginning in 2002, the number of legal smallmouth bass - SMB, largemouth bass - LMB, walleye - WAE, northern pike - NOP and pickerel - PKL caught and released are shown in parentheses () to the right of the number kept.



Region 7



Cayuga Lake



Not For Use in Navigation

Cayuga Lake

County: Seneca, Cayuga, Tompkins

Surface Area: 42,956 Acres

Fish Species Present: Lake Trout, Landlocked Salmon, Brown Trout, Rainbow Trout, Smallmouth Bass, Largemouth Bass, Northern Pike, Chain Pickerel, Yellow Perch, Black Crappie, Bluegill, Rock Bass, Pumpkinseed, Channel Catfish, Freshwater Drum, Brown Bullhead

Scale: 0  22,000 ft

