

The *R/V Seth Green* is operated by the New York DEC Lake Ontario Unit based at the [Cape Vincent Fisheries Station](#). Its primary function is to conduct annual assessments of Lake Ontario's fish stocks to provide information necessary to manage the lake's resources. Most of the sampling programs are carried out in conjunction with the Ontario Ministry of Natural Resources or the USGS's Biological Resource Division's office in Oswego, NY. Vessel time is also available to other researchers with compatible interests.

The *Seth Green* is a full displacement hull designed primarily for trawling, but capable of carrying out a wide variety of sampling tasks. The vessel is rigged for stern trawling with split winches and net drum, and features an enclosed shelterdeck where the fish processing can be carried out in relative comfort. The shelterdeck also houses a 36" Crosely gillnet lifter and secondary steering station. The area also provides a dry area for sounders and computers during hydroacoustic surveys. In 1996 outriggers were added to the vessel which has allowed the crew to work in less favorable weather. This has increased the safety of the crew as well as the quality of the survey results, especially in hydroacoustics work.

## Specifications

LWL- 46 ft, beam- 17 ft, draft- 8 ft

Gross Tonnage- 50 tons

Year Built- 1985

Builder- Newport Offshore, Newport, RI

Designer- Napier Co., Arbroath, Scotland

Main Engine- Cat 3306TA 235 bhp

Auxillary- Northern Lights 30kw 220v 3ph

Fuel Capacity-2200 US gal.

Cruising Speed- 8.2 knots

Accommodations- 4 persons overnight

## **Navigational Equipment**

Furuno 48mi radar

VHF (2)

Northstar 941 GPS w/differential correction

Furuno LC II Loran

166mhz Pentium computer running

Navtek 97 navigational software

Furuno dual frequency color video sounder

Simrad EL paper sounder

Wagner Mark IV autopilot

## **Sampling Equipment**

Alec ABT-1 depth/temperature profiler

Wallace and Tiernan bathythermograph (2)

Scanmar netsoude

Simrad EY500 split beam hydroacoustics sounder

1m plankton nets

vacuum filter for water sampling

Satorius motion averaging electronic platform balance

## **Standard Trawling Gear and Gillnets**

Three-in-one bottom trawl, 60ft. headrope with adjustable cookie sweep.

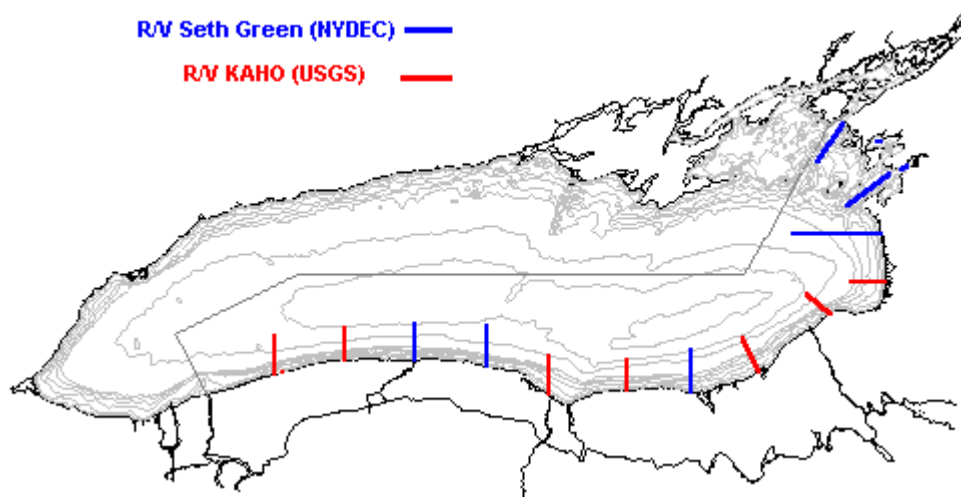
USA Jet cambered, slotted V doors 47"x30" size B

French Midwater trawl, 9x7m opening w/ 5.3 sq.ft. head and footrope kites

Superkrub midwater trawl doors, 1.5 sq.m.

Standard monofilament gillnets: 8' deep x 450 ft.; 50 ft. panels of 2"- 6" str. mesh 1/2" increments.

## Standard Trawling Assessment Sites



## Standard Hydroacoustic Survey Cruise Track

